

We are IntechOpen, the world's leading publisher of Open Access books Built by scientists, for scientists

6,900

Open access books available

186,000

International authors and editors

200M

Downloads

Our authors are among the

154

Countries delivered to

TOP 1%

most cited scientists

12.2%

Contributors from top 500 universities



WEB OF SCIENCE™

Selection of our books indexed in the Book Citation Index
in Web of Science™ Core Collection (BKCI)

Interested in publishing with us?
Contact book.department@intechopen.com

Numbers displayed above are based on latest data collected.
For more information visit www.intechopen.com



Utilization of Response Surface Methodology in Optimization of Extraction of Plant Materials

Alev Yüksel Aydar

Additional information is available at the end of the chapter

<http://dx.doi.org/10.5772/intechopen.73690>

Abstract

Experimental design plays an important role in several areas of science and industry. Experimentation is an application of treatments applied to experimental units and is then part of a scientific method based on the measurement of one or more responses. It is necessary to observe the process and the operation of the system well. For this reason, in order to obtain a final result, an experimenter must plan and design experiments and analyzes the results. One of the most commonly used experimental designs for optimization is the response surface methodology (RSM). Because it allows evaluating the effects of multiple factors and their interactions on one or more response variables it is a useful method. In this section, recent studies have been compiled which aim to extraction of plant material in high yield and quality and determine optimum conditions for this extraction process.

Keywords: design of experiments, olive, phenolic content, yield, RSM, food science

1. Introduction

The response surface methodology (RSM) is a widely used mathematical and statistical method for modeling and analyzing a process in which the response of interest is affected by various variables [1] and the objective of this method is to optimize the response [2]. The parameters that affect the process are called dependent variables, while the responses are called dependent variables [3].

For example, the hardness of a meat is affected by cooking time X_1 and cooking temperature X_2 . The meat hardness can be changed under any combination of treatment X_1 and X_2 . Therefore, time and temperature can vary continuously. If treatments are from a continuous

range of values, response surface methodology is useful for developing, improving, and optimizing the response variable. In this case, the hardness of meat Y is the response variable, and it is a function of time and temperature of cooking. It can be expressed as the dependent variable y is a function of X_1 and X_2 .

$$Y = f(X_1) + f(X_2) + e \quad (1)$$

where Y is the response (dependent variable), X_1 and X_2 are independent variables and e is the experimental error.

Response surface is a method based on surface placement. Therefore, the main goals of a RSM study are to understand the topography of the response surface including the local maximum, local, minimum and ridge lines and find the region where the most appropriate response occurs [4].

The RSM investigates an appropriate approximation relationship between input and output variables and identify the optimal operating conditions for a system under study or a region of the factor field that satisfies the operating requirements [5, 6]. Box-Behnken designs (BBD) and central composite design (CCD) are two main experimental designs used in response surface methodology [3]. Central composite rotatable design (CCRD) and face central composite design (FCCD) has also been applied to optimization studies in recent years [7–9].

The experimental data are evaluated to fit a statistical model (Linear, Quadratic, Cubic or 2FI (two factor interaction)). The coefficients of the model are represented by constant term, A , B and C (linear coefficients for independent variables), AB , AC and BC (interactive term coefficient), A^2 , B^2 and C^2 (quadratic term coefficient). Correlation coefficient (R^2), adjusted determination coefficient ($\text{Adj-}R^2$) and adequate precision are used to check the model adequacies; the model is adequate when its P value < 0.05 , lack of fit P value > 0.05 , $R^2 > 0.9$ and Adeq Precision > 4 . Differences between means can be tested for statistical significance using analysis of variance (ANOVA) [10].

1.1. The basic and theoretical aspects of RSM

The design of experiments (DoE) is the most important aspect of RSM. The DoE aims the selection of most suitable points where the response should be well examined. The mathematical model of the process is mostly related to design of experiments. Thus, the selection of experiment design has a great effect in determining the correctness of the response surface construction. The advantages offered by the RSM can be summarized as determining the interaction between the independent variables, modeling the system mathematically, and saving time and cost by reducing the number of trials [11]. However, the most important disadvantage of the response surface method is that the experimental data are fitted to a polynomial model at the second level. It is not correct to say that all systems with curvature are compatible with a second-order polynomial model. In addition, experimental verification of the estimated values in the model should be done absolutely [3].

In early stage of DoE, screening experiments are performed. If there are many variables have little or more effect on the response, the variables which have large effects on response are identified. Therefore the aim is to determine the design variables that have large effects for further investigation [12].

2. RSM application in optimization of extraction

Using Response Surface Method in the extraction studies has been of interest to many researchers in recent years [10, 13, 14]. The steps that must be followed in order to apply this method correctly are shown in **Figure 1**.

Recent optimization studies using the response surface method in extraction from plant materials are summarized in **Table 1**. Independent and dependent variable numbers and the optimization designs are also demonstrated in the same table.

2.1. Yield

Extraction yield is one of the main properties determining efficiency of olive oil extraction. This parameter indirectly takes into account the oil content held in vegetable water and pomace [15, 16].

Extraction yield is defined as the percentage of the extracted olive oil from the total weight of fruit (g). The extraction yield is calculated using the formula below [10]:

$$\text{Yield} = \frac{\text{Extracted Oil(g)}}{\text{Olive Fruit(g)}} \times 100 \quad (2)$$

Aydar et al. used olive fruits (*Olea europaea* L.) from Edremit cultivar grown in Mut area were harvested in the 2015 crop season with a maturity index of 3.35 to obtain ideal conditions for an ultrasound assisted olive oil extraction. It was aimed an extraction for extra virgin olive oils in low acidity and high yield using the Box-Behnken design to optimize extraction parameters including ultrasound time, ultrasound temperature and malaxation time [10].

In terms of yield, the independent variable (X_2), the quadratic term (X_2^2) and the interactive terms (X_1X_2 , X_2X_3) were all significant ($P < 0.05$). The quadratic regression model for AV was as follows:

$$\text{Yield} = 7.48 + 0.90625X_2 + 0.8875X_3 - 1.1X_1X_2 + 0.4375X_2X_3 - 1.3525X_2^2 \quad (3)$$

The most significant effect on the extraction yield ($P < 0.05$) was the malaxation temperature among all ultrasound extraction variables. Conversely, ultrasound time showed no effect ($P > 0.05$) on the yield [10].

The response surface methodology has been applied to determine the optimization of olive paste heating and how it is affected by the independent process variables including olive

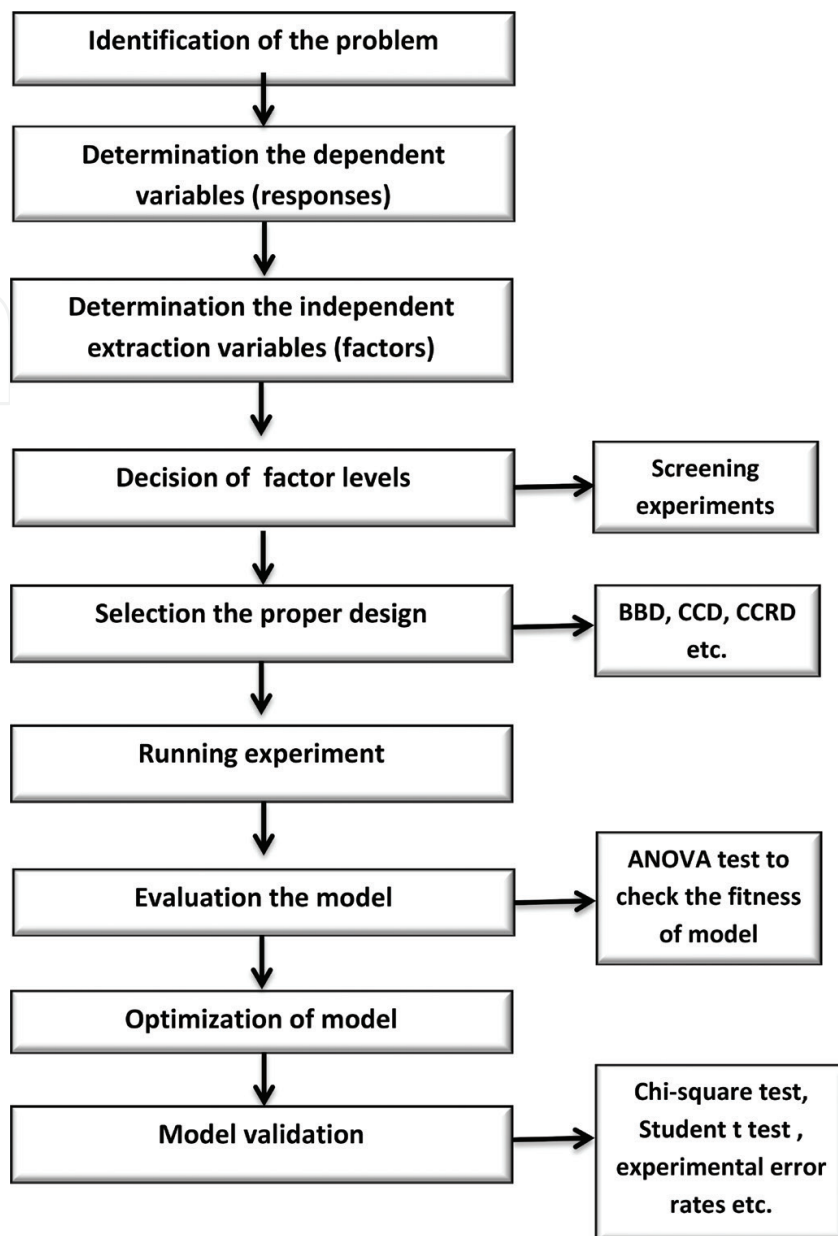


Figure 1. Steps for response surface methodology.

paste flow (Q), high power ultrasound (HPU) intensity (W), olive temperature (OT), olive moisture (OM) and olive fat content (OF) by Bejaoui et al. [17]. They obtained a 2FI (two factor interaction) model for olive paste temperature according to the analysis of variance which showed that the regression model was significant for a P-value <0.0001. The most significant terms of the model were Q, W and the interaction terms Q*W and W*OF based on P-values less than 0.0001 [17].

Second-order equations for oleuropein yield was shown in Eq. (4) [9]

$$\begin{aligned} \text{Yield} = & 0.62767 - 0.029622 X_1 - 2.60 \times 10^{-3} X_2 - 0.056494 X_3 + 4.26 \times 10^{-5} X_1 X_2 + 5.07 \times 10^{-3} X_1 X_3 \\ & + 2.48 \times 10^{-4} X_2 X_3 + 1.15 \times 10^{-4} X_{21} + 2.53 \times 10^{-6} X_{22} - 0.013423 X_{23} \end{aligned} \quad (4)$$

Extraction	Extraction method	Process parameters	Design method	Dependent variables	Model	Ref
Olive leaf	Ultrasound assisted extraction	Solvent concentration, the ratio of solid to solvent, extraction time	BBD	Extract yield, total polyphenol content, antioxidant activity	Quadratic polynomial	[27]
Olive waste	Non-conventional aqueous extraction method	NaOH, temperature, time, mass of the waste	BBD	Total phenolic content, relative color strength	Quadratic polynomial	[29]
Olive leaf	Solvent-free microwave-assisted extraction	Amount of sample, irradiation power, the extraction time.	FCCD	Oleuropein yield and total phenolic content	Quadratic polynomial	[9]
Olive oil	Ultrasound assisted extraction	Ultrasound time, ultrasound temperature, malaxation time	BBD	Oil yield, acidity	Quadratic polynomial	[10]
Olive oil	High power ultrasound assisted extraction	Olive paste flow, ultrasound intensity, fruit temperature before crushing, olive moisture, olive fat content	BBD	Olive paste temperature	2FI	[17]
Olive oil	Conventional extraction	Malaxation time and temperature	CCD	Acidity, peroxide value, K232, K270, Total phenolic content	Quadratic polynomial	[32]
Black Carrot	Ultrasound assisted extraction	Ultrasound energy density, temperature	CCD	Anthocyanin compounds	Quadratic polynomial	[13]
Curry leaf	Ultrasound assisted extraction	Temperature, ultrasonic power, methanol concentration	CCD	Catechin yield, myricetin yield, quercetin yield, antioxidant activity	Quadratic polynomial	[20]
Rapeseed meal	Ultrasound assisted solvent extraction	Temperature, liquid to material ratio, duration and ultrasonic power	BBD	Carotenoid yield	Second-order (Quadratic) polynomial	[31]
Gac fruit peel	Solvent extraction	Extraction time, extraction temperature, solvent ratio	BBD	Total carotenoid, Antioxidant capacity	Quadratic polynomial	[30]
Coffee silverskin	Ultrasound assisted extraction/Microwave assisted extraction	Extraction time, extraction temperature	CCD	Total phenolic content, radical scavenging capacity, total caffeoylquinic acids, caffeine content	Quadratic polynomial	[21]

Extraction	Extraction method	Process parameters	Design method	Dependent variables	Model	Ref
Brown seaweed	Ultrasound assisted extraction	Extraction time, acid concentration, ultrasound amplitude	BBD	Total phenolic, fucose, uronic acids	Second-order (Quadratic) polynomial	[35]
Hazelnut skin	Ultrasound assisted extraction	Extraction time, temperature, ultrasound amplitude	CCD, BBD	Crude polysaccharide yield, consumed energy	Quadratic polynomial	[25]
<i>Trapa quadrispinosa</i> stems	Ultrasound assisted extraction	Ultrasonic time, liquid to material ratio, ultrasonic temperature	BBD	Polysaccharide yield, Ferric-Reducing Antioxidant Capacity (FRAC)	Quadratic polynomial	[26]
<i>Sphallerocarpus gracilis</i> roots	Hot water extraction, Ultrasound assisted extraction	Extraction temperature, Extraction time, Liquid–solid ratio, Ultrasound power	BBD	<i>S. gracilis</i> yield	Quadratic polynomial	[33]
Papaya seed oil	Ultrasound assisted extraction	Time, temperature, ultrasound power, solvent to sample ratio	SCCD	Yield, antioxidant activity, p-anisidine value, peroxide value, totox value	Quadratic polynomial	[18]
Pomegranate seed oil	Ultrasound assisted extraction	Ultrasonic power, extraction temperature, extraction time, the ratio of solvent volume and seed weight	BBD	Oil yield	Quadratic polynomial	[19]

Table 1. Summary of recent studies published on the extraction of plant materials optimized by RSM.

Where X_1 is the amount of sample, X_2 is the Microwave (MW) irradiation power, and X_3 is the extraction time. The researchers found that the second power of microwave intensity was the most significant parameter, followed by the amount of sample, quadratic time, and power for oleuropein yield [9].

Response surface method has been used frequently in recent years to optimize different oil extractions other than olive oil including papaya seed oil and pomegranate seed oil [18, 19].

To optimize the ultrasound-assisted extraction conditions followed by ultrahigh performance liquid chromatography (UHPLC) to achieve high catechin, myricetin, and quercetin contents, and high antioxidant and anticancer activities in the curry leaf extracts, RSM was applied by Ghasemzadeh et al. [20]. They used the central composite experimental design (3-level, 3-factorial) to determine the optimum extraction parameters affecting the extraction yields of catechin (Y1), myricetin (Y2), quercetin (Y3), and antioxidant activity (Y4) of curry leaf extracts [20].

The extraction efficiency of UAE and MAE methods was compared to a conventional solvent extraction by Guglielmetti et al. [21]. Authors used RSM with a CCD to investigate ultrasound assisted extraction (UAE) and microwave assisted extraction (MAE) of caffeoylquinic acids and caffeine from coffee silverskin (CS) at two particle size. They found that the highest caffeine content ($14.24 \text{ g kg}^{-1} \text{ dw}$) with a significant reduction of extraction time was obtained by UAE [21].

Since different extraction methods have important impacts on the polysaccharide bioactivity, yield and structure, to find the best extraction method to obtain high yield of polysaccharide is crucial. Recently several researchers used RSM for optimization of polysaccharide extraction from different plant materials [22–26]. To investigate the best response surface design for optimization of polysaccharide yield (CPS) from hazelnut skin, CCD and BBD designs were studied by Yılmaz and Tavman [25]. Optimum conditions for a maximum yield of polysaccharide extraction from *Trapa quadrispinosa* stems recently determined by Raza et al. 41 min, 31.5 mL/g and 58°C were the optimum conditions for extraction time, ratio of water to material, and extraction temperature, respectively [26].

2.2. Phenolic and antioxidant compound extraction from plant materials

In recent years, there has been a growing interest in finding new natural sources of food antioxidants. As a main fruit crop, olive is also valued due to its phenolic- containing leaves. Optimization of ultrasound-assisted extraction of olive leaf has been studied by extraction parameters including solid/solvent ratio, time and ethanol concentration by Şahin and Şamli [27]. In order to obtain the maximum extraction performance for an ultrasound assisted extraction, 500 mg olive leaf to 10 mL solvent ratio, 60 min of extraction time and 50% ethanol composition were found to be as optimal operating conditions [27].

Shirzad et al. also studied on optimization of olive leave extraction in order to shorten the time of extraction and decrease the consumption of energy. The conditions for obtaining maximum yield of polyphenols, total flavonoids and antioxidants were optimized using RSM The effects of ultrasonic temperature (35–65°C), ultrasonic time (5–15 min), and ethanol to water

ratio (Et:W) (25–75%) were evaluated. The highest extraction yield was found to be 51% of ethanol to water ratio at 65°C for 15 min [28].

Elksibi et al. used RSM to investigate the optimization of natural colorant non-conventional extraction technique from olive waste. They studied the combined effects of extraction conditions on total phenolic content (TPC) and relative color strength (K/S) using a three-level three-factor Box-Behnken design [29].

Second-order equation for total phenolic content from olive leaf obtained by RSM was shown in Eq. (5) by Şahin et al. [9]:

$$\begin{aligned} \text{TPC} = & -0.019369 - 0.36003X_1 + 0.14249X_2 - 0.61029X_3 + 6.64 \times 10^{-4}X_1X_2 + 0.089174X_1X_3 \\ & + 4.53 \times 10^{-3}X_2X_3 - 0.012889X_{21} - 2.74 \times 10^{-4}X_{22} + 2.34993X_{23} \end{aligned} \quad (5)$$

where X_1 is the amount of sample, X_2 is the MW irradiation power, and X_3 is the extraction time [9].

Agcam et al. [13] used response surface methodology to optimize ultrasound assisted anthocyanin compounds extraction from black carrot. The independent variables were temperature and ultrasound energy density which is calculated with following Eq. (6):

$$E = \frac{P \cdot t}{M} \quad (6)$$

The optimization of five different anthocyanin compounds from black carrot was conducted using CCD design with a 16 factorial experiments, 5 replicates of the central point. They obtained quadratic polynomial equations for each anthocyanin compound which were cyanidin-3-xylosyl-glucosyl-galactoside (C3XGG), cyanidin-3-xylosyl-galactoside (C3XG), monoacylated anthocyanins cyaniding-3-xylosyl-glucosyl-galactosidesinapic acid (C3XGGS), cyanidin-3-xylosyl-glucosylgalactoside-ferulic acid (C3XGGF), and cyanidin-3-xylosyl-glucosyl-galactoside-coumaric acid (C3XGGC) [13].

Ghasemzadeh et al. [20] found that ANOVA for predicted model of antioxidant activity was significant (F-value 17.21, $P < 0.0001$) with a good coefficient of determination ($R^2 = 0.98$). They also observed that extraction variables showed significant ($P < 0.01$) quadratic and linear effects on the antioxidant activity and the predicted model obtained for DPPH (Y_4) was as follows:

$$\begin{aligned} \text{DPPH} = & +79.56 - 5.70X_1 + 1.88X_2 + 1.29X_3 - 1.31X_1X_2 + 0.24X_1X_3 + 0.64X_2X_3 \\ & - 15.29X_1^2 - 0.57X_2^2 - 1.14X_3^2 \end{aligned} \quad (7)$$

Where X_1 is the temperature, X_2 is the methanol concentration, and X_3 is the ultrasonic power.

Using RSM the extraction conditions including extraction time, temperature and solvent–solid ratio were optimized for maximizing extraction yields of carotenoids and antioxidant capacity from Gac fruit peel by Chuyen et al. [30]. In that study most effective solvent was

ethyl acetate and optimal extraction conditions (time, temperature and solvent-solid ratio) were 150 min, 40.7°C and 80 mL g⁻¹, respectively [30].

Box-Behnken design (BBD) with a total number of 29 experiments were conducted for four factors (temperature, liquid to material ratio, duration and ultrasonic power) and at three levels to obtain high yield of carotenoid from rapeseed meal. Optimal ultrasound assisted extraction conditions were as follows: temperature 49.6°C, liquid to material ratio 41.4 mL/g, duration 48.5 min, ultrasonic power 252.9 W [31].

Guglielmetti et al. observed a positive correlation between an increase of temperature and total phenolic content (TPC) for conventional solvent extraction and UAE; a negative effect on TPC when using MAE above 50°C. They found that temperature was the most effective process variable on extraction processes [21].

Espínola et al. used RSM to investigate the optimum extraction condition for virgin olive oil extraction from olives at three different maturation index (MI). In olives at lowest maturity index, temperature had a positive effect on polyphenol content at low malaxation temperatures, however no significant effect was determined at higher temperatures. On the contrary, malaxation time had a slight influence at lower temperatures. In higher MI olives, variations of polyphenol content were not significantly different [32].

3. Validation of the model

In the response surface method, the model that best represents how dependent variables are affected by independent variables is determined theoretically. However, experiments should be carried out to verify the reliability of the theoretically determined models under optimum conditions. Chi-Square test and t-tests are most commonly used to determine the difference between experimental and predicted values. Another method to evaluate the validation of model is to calculate experimental error between theoretical and experimental values.

The experimental and predicted values were 8.31 and 8.42% for the acidity and the yield were 0.31 g oleic acid/ 100 g olive oil and 0.28 g oleic acid/ 100 g olive oil for predicted and experimental values, respectively. These results were in good agreement with the predicted values under the optimum working condition. Therefore, the acidity value of olive oil and yield for any combination of ultrasound time, ultrasound temperature and malaxation time could be accurately predictor by the regression models obtained by RSM [10]. In the 2005–2006 season, the estimated extraction yield, acidity and peroxide index of the 3.2 MI olive samples showed that the experimental data were consistent with the model for all three dependent variables [32].

Elksibi et al. found that experimental value of 22.54 and 1120 mg/L for the color strength parameter (K/S) and the total phenolic content, respectively. While the predicted values were 23.22 and 1134 mg/L for the color strength parameter (K/S) and the total phenolic content, respectively. They determined the results obtained at the optimal combination was in agreement with the theoretical result. Therefore, the model obtained in this research was confirmed [29].

The experimental extraction yield in the hot water extraction process was $3.79 \pm 0.13\%$ and the yield in the ultrasound extraction process was $6.04 \pm 0.21\%$ under the optimum conditions, which were in good agreement with the predicted values. These results demonstrated that the extraction models were reliable and accurate [33].

15 min, 45°C and 50% amplitude was selected as an optimal level of parameters to validate the result of desirability functions. 1.69% CPS yield and 73.00 kJ energy consumption were found and the predicted values obtained by CCD and BBD were similar to the experimental values and the points of all predicted and experimental response values were correlating. Thus the model developed was significant and reliable. Studentized test results were in agreement with experimental runs which showed that all the data points were kept within the limits [34].

Validation of the regression equation and statistical model was conducted at 49.6°C , 41.4 mL/g, 48.5 min and 240 W which were temperature, liquid to material ratio, extraction time and power of ultrasound, respectively. With these optimized conditions, the predicted response for carotenoid yield was approximately 0.1570 mg/g, and the experimental value was found as 0.1577 ± 0.0014 mg/g. These results confirmed that experimental values are in agreement with the predicted values, thus the model was validated [31].

4. Conclusions

Response surface methodology with a wide range of applications in food science and technology has been successfully used for many years. Optimization of the extraction of plant materials known to be useful for health has attracted many researchers in recent years. This section summarizes the recent researches that optimize extraction conditions necessary to obtain higher quality and yield than plant materials using RSM. One of the most important points in the implementation of this method is that the predicted values in the model should be verified experimentally. RSM has many advantages when compared to classical methods. It needs fewer experiments to study the effects of all the factors and the optimum combination of all the variables can be revealed. The interaction (the behavior of one factor may be dependent on the level of another factor) between factors can be determined. It also requires less time and effort. With all of these advantages, it will be used not only in food science but also in other areas in future.

Author details

Alev Yüksel Aydar

Address all correspondence to: alevyuksel.aydar@cbu.edu.tr

Department of Food Engineering, Faculty of Engineering, Manisa Celal Bayar University, Muradiye, Manisa, Turkey

References

- [1] Refinery NP, Braimah MN. Utilization of response surface methodology (RSM) in the optimization of crude oil refinery. *Journal of Multidisciplinary Engineering Science and Technology (JMEST)*. 2016;**3**:4361-4369
- [2] Montgomery DC. *Design and Analysis of Experiments: Response Surface Method and Designs*. New Jersey: John Wiley and Sons, Inc; 2005
- [3] Koç B, Kaymak-Ertekin F. Response surface methodology and food processing applications. *Gıda*. 2009;**7**:1-8
- [4] Bradley N. *The response surface methodology*. (M.A.) thesis. Indiana University South Bend; 2007
- [5] Farooq Z, Rehman S, Abid M. Application of response surface methodology to optimize composite flour for the production and enhanced storability of leavened flat bread (Naan). *Journal of Food Processing and Preservation*. 2013;**37**:939-945
- [6] Pishgar-Komleh SH, Keyhani A, Msm R, Jafari A. Application of response surface methodology for optimization of Picker-Husker harvesting losses in corn seed. *Iranica Journal of Energy and Environment*. 2012;**3**(2):134-142
- [7] Wang J, Sun B, Cao Y, Tian Y, Li X. Optimisation of ultrasound-assisted extraction of phenolic compounds from wheat bran. *Food Chemistry*. 2008;**106**:804-810
- [8] Prakash Maran J, Mekala V, Manikandan S. Modeling and optimization of ultrasound-assisted extraction of polysaccharide from *Cucurbita moschata*. *Carbohydrate Polymers*. 2013;**92**:2018-2026
- [9] Şahin S, Samli R, Tan AS, Barba FJ, Chemat F, Cravotto G, Lorenzo JM. Solvent-free microwave-assisted extraction of polyphenols from olive tree leaves: Antioxidant and antimicrobial properties. *Molecules*. 2017;**7**:1054
- [10] Aydar AY, Bağdatlıoğlu N, Köseoğlu O. Effect of ultrasound on olive oil extraction and optimization of ultrasound-assisted extraction of extra virgin olive oil by response surface methodology (RSM). *Grasas Y Aceites = International journal of fats and oils*. 2017;**68**
- [11] Boyacı İH. A new approach for determination of enzyme kinetic constants using response surface methodology. *Biochemical Engineering Journal*. 2005;**25**:55-62
- [12] Nagendra S. Response surface methodology: Advantages and challenges. *Design Optimization*. Schenectady, New York, USA: General Electric Corporate R&D; pp. 100-104. https://www.brad.ac.uk/staff/vtoropov/DO/vol1/Forum_i1_100-104.pdf
- [13] Agcam E, Akyıldız A, Balasubramaniam VM. Optimization of anthocyanins extraction from black carrot pomace with thermosonication. *Food Chemistry*. 2017;**237**:461-470

- [14] Chaiklahan R, Chirasuwan N, Triratana P, Loha V, Tia S, Bunnag B. Polysaccharide extraction from *Spirulina* sp. and its antioxidant capacity. *International Journal of Biological Macromolecules*. 2013;**58**:73-78
- [15] Angerosa F, Mostallino R, Basti C, Vito R. Influence of malaxation temperature and time on the quality of virgin olive oils. *Food Chemistry*. 2001;**72**:19-28
- [16] Puértolas E, Martínez de Marañón I. Olive oil pilot-production assisted by pulsed electric field: Impact on extraction yield, chemical parameters and sensory properties. *Food Chemistry*. 2015;**167**:497-502
- [17] Bejaoui MA, Beltran G, Aguilera MP, Jimenez A. Continuous conditioning of olive paste by high power ultrasounds: Response surface methodology to predict temperature and its effect on oil yield and virgin olive oil characteristics. *LWT- Food Science and Technology*. 2016;**69**:175-184
- [18] Samaram S, Mirhosseini H, Tan CP, Ghazali HM, Bordbar S, Serjouie A. Optimisation of ultrasound-assisted extraction of oil from papaya seed by response surface methodology: Oil recovery, radical scavenging antioxidant activity, and oxidation stability. *Food Chemistry*. 2015;**172**:7-17
- [19] Tian Y, Xu Z, Zheng B, Martin Lo Y. Optimization of ultrasonic-assisted extraction of pomegranate (*Punica granatum* L.) seed oil. *Ultrasonics Sonochemistry*. 2013;**20**:202-208
- [20] Ghasemzadeh A, Jaafar HZ, Karimi E, Rahmat A. Optimization of ultrasound-assisted extraction of flavonoid compounds and their pharmaceutical activity from curry leaf (*Murraya koenigii* L.) using response surface methodology. *BMC Complementary and Alternative Medicine*. 2014;**14**:318
- [21] Guglielmetti A, Ghirardello D, Belviso S, Zeppa G. Optimisation of ultrasound and microwave-assisted extraction of caffeoylquinic acids and caffeine from coffee silverskin using response. *Italian Journal of Food Science*. 2017;**29**:409-423
- [22] Mei L, Zhen-Chang W, Hao-Jie D, Li C, Qing-Gang X, Jing L. Response surface optimization of polysaccharides extraction from *Liriope* roots and its modulatory effect on Sjogren syndrome. *International Journal of Biological Macromolecules*. 2009;**45**:284-288
- [23] Chen R, Li Y, Dong H, Liu Z, Li S, Yang S, Li X. Optimization of ultrasonic extraction process of polysaccharides from *Ornithogalum Caudatum* Ait and evaluation of its biological activities. *Ultrasonics Sonochemistry*. 2012;**19**:1160-1168
- [24] Zhu C, Zhai X, Li L, Wu X, Li B. Response surface optimization of ultrasound-assisted polysaccharides extraction from pomegranate peel. *Food Chemistry*. 2015;**177**:139-146
- [25] Yilmaz T, Tavman Ş. Ultrasound assisted extraction of polysaccharides from hazelnut skin. *Food Science and Technology International*. 2015;**22**(2):112-121
- [26] Raza A, Li F, Xu X, Tang J. Optimization of ultrasonic-assisted extraction of antioxidant polysaccharides from the stem of *Trapa quadrispinosa* using response surface methodology. *International Journal of Biological Macromolecules*. 2017;**94**:335-344

- [27] Şahin S, Şamli R. Optimization of olive leaf extract obtained by ultrasound-assisted extraction with response surface methodology. *Ultrasonics Sonochemistry*. 2013;**20**:595-602
- [28] Shirzad H, Niknam V, Taheri M, Ebrahimzadeh H. Ultrasound-assisted extraction process of phenolic antioxidants from olive leaves: A nutraceutical study using RSM and LC-ESI-DAD-MS. *Journal of Food Science and Technology*. 2017;**54**:2361-2371
- [29] Elksibi I, Haddar W, Ticha MB, Mhenni MF. Development and optimisation of a non conventional extraction process of natural dye from olive solid waste using response surface methodology (RSM). *Food Chemistry*. 2016;**161**:345-352
- [30] Chuyen HV, Roach PD, Golding JB, Parks SE, Nguyen MH. Optimisation of extraction conditions for recovering carotenoids and antioxidant capacity from Gac peel using response surface methodology. *International Journal of Food Science and Technology*. 2017;**52**:972-980
- [31] Yan F, Fan K, He J, Gao M. Ultrasonic-assisted solvent extraction of carotenoids from rapeseed meal: Optimization using response surface methodology. *Journal of Food Quality*. 2015;**38**:377-386
- [32] Espínola F, Moya M, Fernández DG, Castro E. Modelling of virgin olive oil extraction using response surface methodology. *International Journal of Food Science and Technology*. 2011;**46**:2576-2583
- [33] Ma T, Sun X, Tian C, Luo J, Zheng C, Zhan J. Polysaccharide extraction from *Sphallerocarpus gracilis* roots by response surface methodology. *International Journal of Biological Macromolecules*. 2016;**88**:162-170
- [34] Yılmaz T, Tavman S. Modeling and optimization of ultrasound assisted extraction parameters using response surface methodology for water soluble polysaccharide extraction from hazelnut skin. *Journal of Food Processing & Preservation*. 2016;**41**:1-13
- [35] Kadam SU, Tiwari BK, Smyth TJ, O'Donnell CP. Optimization of ultrasound assisted extraction of bioactive components from brown seaweed *Ascophyllum nodosum* using response surface methodology. *Ultrasonics Sonochemistry*. 2015;**23**:308-316

