

We are IntechOpen, the world's leading publisher of Open Access books Built by scientists, for scientists

6,900

Open access books available

186,000

International authors and editors

200M

Downloads

Our authors are among the

154

Countries delivered to

TOP 1%

most cited scientists

12.2%

Contributors from top 500 universities



WEB OF SCIENCE™

Selection of our books indexed in the Book Citation Index
in Web of Science™ Core Collection (BKCI)

Interested in publishing with us?
Contact book.department@intechopen.com

Numbers displayed above are based on latest data collected.
For more information visit www.intechopen.com



Role of Lipid Droplet Proteins in the Development of NAFLD and Hepatic Insulin Resistance

Kaori Minehira and Philippe Gual

Additional information is available at the end of the chapter

<http://dx.doi.org/10.5772/intechopen.71572>

Abstract

NAFLD is diagnosed, when the liver fat exceeds more than 5% of liver weight. Inside of hepatocytes, these fats are stored in cytosolic lipid droplets. The lipid droplets can be formed from a bud, vesicles of the lipid bilayer, which lines at a vicinity of the endoplasmic reticulum (ER). On the surface of droplets, there are several structural/functional proteins such as lipid droplet proteins, lipogenic enzymes, and lipases. Interestingly, the lipid droplet proteins seem to have great impact on a development of NAFLD. Some proteins can interact with transcriptional factors such as SREBP1c and PPAR-alpha/gamma, and some proteins strongly impact a mitochondrial structure. As a result, the lipid droplet proteins highly influence lipid handling and fatty acid oxidation in hepatocytes. This chapter will elucidate our recent understanding of the role of each lipid droplet protein in fatty liver formation and in hepatic insulin resistance. Existing information on genetically modified animals as well as on human NAFLD was reviewed on Perilipin families, CIDE proteins, Seipin, and PNPLAs. Finally, the chapter will discuss how the lipid droplet proteins could potentially lead/protect from hepatic insulin resistance via abnormal accumulation of ceramides and diacylglycerols, autophagy, ER stress, and oxidative stress.

Keywords: perilipin, CIDE proteins, insulin sensitivity, mitochondrial oxidation, autophagy, ER stress

1. Introduction

Liver can store a certain amount of excess glucose as a form of glycogen. A part of the stored glycogen can then be retransformed into glucose (so-called gluconeogenesis) during a fasting condition to leave the liver. Contrary to the glucose, an excess lipid is not normally stored in the liver. However, in a pathological case, excess lipid storage can be observed

in hepatocytes, which is called hepatic steatosis. Hepatic steatosis could be diagnosed in different grades according to histological observation (Grade 1: 5–33% lipid invasion in hepatocytes, Grade 2: 33–66%, and Grade 3: >66%). Up to 90% of obese patients could have the hepatic steatosis, and the presence is linked to several metabolic dysfunctions such as insulin resistance, oxidative stress, endoplasmic reticulum (ER) stress, and mitochondrial dysfunctions [1–3]. As a result, hepatic steatosis often leads to abnormal gluconeogenesis, which is a typical phenotype of type 2 diabetes. To better prevent such metabolic dysfunctions, scientists have been actively investigating mechanisms by which hepatic lipids impact metabolic functions.

2. Lipid droplet structure

When excess fat is present in a liver, these fats are stored intracellularly in cytosolic lipid droplet compartment. Today, an origin of a lipid droplet biosynthesis has not been understood completely. Walther and Farese suggested different models of the lipid droplet biosynthesis [4]. Most accepted lipid droplet biosynthesis model is that triglyceride (TG) accumulated at the ER membranes forms a bud, a vesicle of the lipid bilayer [5]. On ER membranes, phospholipids are added onto the surface of growing lipid droplets. Secondary, lipid droplets could increase their size via lipid droplet fusion. Finally, a matured lipid droplet is formed consisting TG and cholesterol esters in a core, coated by a membrane monolayer of phospholipids and sphingomyelin (**Figure 1A**). On the surface and/or vicinity of droplets, there are several structural/functional proteins such as lipid

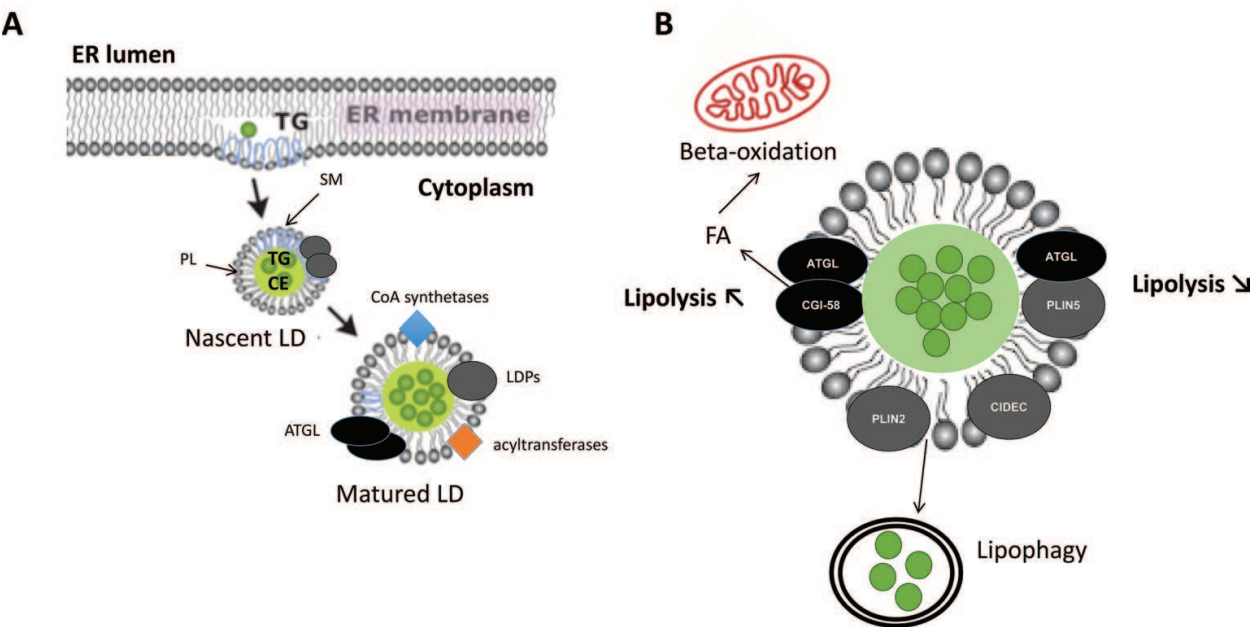


Figure 1. Lipid droplet formation. (A) Formation of nascent lipid droplet (LD) with lipid droplet proteins (LDPs), (B) lipid droplet biology.

droplet proteins, lipogenic enzymes, and lipases (**Figure 1B**). Enzymes required for lipid droplet synthesis are also located in the ER. This strategic enzyme location helps to form, stabilize, and degrade lipid droplets when necessary. Hydrolysis of lipid is highly regulated by different enzymes such as adipose triglyceride lipase (ATGL), hormone-sensitive lipase (HSL), and monoglyceride lipase (MGL). ATGL is responsible for the hydrolysis of triglyceride, followed by HSL, which cleaves one molecule of fatty acid from diacylglycerol, and finally hydrolysis is completed by MGL. In hepatocytes, ATGL interacts both lipid droplet protein, perilipin 5 (PLIN5) and comparative gene identification-58 (CGI-58). When ATGL interacts with PLIN5, this decreases lipolysis; however, if ATGL interacts with CGI-58, this increases lipolysis [6]. Therefore, lipid droplet proteins play a key role regulating a fate of cellular lipid storage (**Table 1**).

LD protein	Expression cites	Observed functions	Reported interactions with other genes/proteins
PLIN1 (perilipin A)	WAT, cardiac muscle liposarcoma, BAT	LD stability, control of hormone-induced lipolysis	ATGL, CGI58, [97, 98], SREBP1c [19], CIDEA [15]
PLIN2 (ADRP, adipophilin)	Liver, WAT, mammary gland, macrophages, sebocytes, ubiquitous expression	LD stability, adipocytes differentiation, VLDL lipitation	PPAR alpha, gamma [21, 99, 100], delta [101] hepatic von Hippel-Lindau protein [102]
PLIN3 (TIP47)	Ubiquitous expression, skeletal muscle, neutrophils, sebocytes	LD stability, PGE ₂ production, intracellular trafficking	Mannose-6-phosphate receptor [9]
PLIN4 (S3-12)	WAT, skeletal muscle	LD stability, adipocytes differentiation	PLIN5 [32]
PLIN5 (OXPAT, LSDP5, MLDP)	Skeletal muscle, BAT, heart, liver, beta-cells	LD stability, fat oxidation, mitochondrial recruitment	PPARalpha [60], delta [103], CIG58, ATGL [6], ABHD5 [104]
PLPNA3 (Adiponutrin)	WAT, liver, skeletal muscle, pancreas	Triglyceride and retinyl palmitate esterase activity	SREBP1c [105]
PLPNA2 (ATGL)	Adipose tissue	Lipolysis	SIRT1 [106], PLIN5 [6], PLIN1 [33, 97]
CIDEA	Adipose tissue, liver	Lipogenesis	SREBP1c [41, 42]
CIDEB	Adipose tissue	Contributes to lipogenesis, lipitation of VLDL, hepatitis virus assembly	HCV NS58 protein [107]
CIDEA (FSP27)	Adipose tissue, liver	LD stability, LF fusion, lipid transfer	PPAR alpha, gamma [42, 45]
SEIPIN (BCSL)	Adipose tissue, liver, brain, testis	Maturation of LD, lipolysis	

Table 1. Lipid droplet proteins.

3. Lipid droplet protein families

Lipid droplet proteins were discovered in the 1990s in phospholipid monolayer of lipid droplet [7–9]. At that time, each lipid droplet proteins had a different nomenclature. In 2010, it was suggested to uniform their names as the “perilipin family protein: PAT protein” [10]. PAT was named after the three proteins: PLIN1 (Perilipin), PLIN2 (Adipose differentiation-related protein; ADRP), and PLIN3 (Tail-interacting protein of 47 kDa; TIP47). All PLIN families contain a conserved domain called PAT domain [11] with an exception of PLIN4 that only contains long 11-mer repeat motifs [12]. The expression of these proteins and their functions are slightly different, and their exact roles for each cell type have not been yet completely understood. Interestingly, their expression depends on a size of lipid droplets (small lipid droplets: PLIN3, PLIN4, PLIN5; medium lipid droplets: PLIN2; and large lipid droplet: PLIN1).

3.1. PLIN1

PLIN1 was one of the first lipid droplet protein identified in adipocytes [13, 14], and its expression is mainly observed in matured adipocytes. During a differentiation of premature adipocytes, PLIN2 plays a major role to lipidate small lipid droplets. Once lipid droplet gains enough size, PLIN1 replaces PLIN2 to stabilize large lipid-rich lipid droplets and helps to mature adipocytes. PLIN1 also interacts with cell-death-inducing DNA-fragmentation-factor 45-like effector (CIDE)-C for a lipid droplets fusion process [15]. Among different reported functions of PLIN1 in adipocytes, the most well-characterized role of PLIN1 is a control of lipolysis. PLIN1 co-localizes with ATGL and CGI-58 on a surface of lipid droplets at a basal condition. Upon a lipolytic stimulation, PLIN1 is phosphorylated and CGI-58 is released and activates ATGL for a lipolysis. In hepatocytes, PLIN1 is not expressed in normal healthy liver, but its expression is observed in steatotic hepatocytes [16–18]. During a formation of hepatic steatosis, the expression of PLIN1 is synchronized with sterol regulatory element-binding protein (SREBP)-1c, a key regulator of *de novo* lipogenesis [19]. As a result, both genes could strongly contribute to accelerate the pathogenesis of hepatic steatosis [20].

3.2. PLIN2

PLIN2 was originally named as adipose differentiation-related protein due to its high expression during an adipocyte differentiation [8]. PLIN2 is ubiquitously expressed and its expression in the liver is high among other lipid droplet proteins [21]. Chronic alcohol consumption stimulates *de novo* lipogenesis and induces hepatic steatosis together with an upregulation of PLIN2 [22]. Hepatocellular ballooning and oxidative injury were also observed under such condition [18]. Magne et al. observed in human NAFLD patients that PLIN2 polymorphism (ser1Pro) was linked to a decreased VLDL levels [23].

A recent study demonstrated that the PLIN2 and PLIN3 double-knockout in hepatocytes induced insulin resistance [24]. In addition, the overexpression of PLIN2 in rat skeletal muscle resulted in an accumulation of TG in muscle without insulin resistance [25]. However, general deletion of PLIN2 in mice also showed a protective role against hepatic steatosis and insulin resistance (discussed in a later paragraph, **Table 2**). The exact impacts of PLIN2 modification on insulin resistance have not yet been fully elucidated.

LD proteins	Up or downregulation	Outcomes
PLIN1	Downregulation KO mice [61] KO mice [62]	Body fat↓, fat oxidation↑ Lipolysis↑, cardiac steatosis↑, cardiac hypertrophy
PLIN2	Downregulation ASO [63, 64] KO—alcohol diet [66] KO—high fat diet [65] Liver specific KO—methionine-choline deficient diet [95] Lep (ob/ob)/Plin2 double KO mice [108] KO—high fat diet [109]	Hepatic steatosis↓ (ceramide-, DAG↓), IR ↓ Hepatic steatosis↓ (ceramide↓), IR ↓, glucose tolerance- Hepatic steatosis↓, body fat↓, adipose inflammation↓ Hepatic steatosis↓, hepatic inflammation↓, fibrosis↓ VLDL secretion ↑ Hepatic steatosis ↓, IR↓ (liver, muscle) Hepatic steatosis ↓VLDL -
PLIN3	Downregulation ASO [67]	Hepatic steatosis ↓ IR↓
PLIN4	Downregulation KO [32]	Cardiac steatosis↓
PLIN5	Downregulation KO [38] KO [40] Upregulation Adenovirus [68]	Lack of lipid droplet in heart, ROS↑, heart mal function, Hepatic steatosis ↓, mitochondrial oxidative capacity↑, lipotoxic injury Hepatic steatosis ↑ IR-
PLPNA3	Downregulation KO [55, 56] Upregulation G allele knock-in Ref. [57]	Hepatic steatosis - Hepatic steatosis ↑
PLPNA2	Downregulation KO [69] Liver-specific KO [70]	Steatosis in different organs↑, IR↓ Hepatic steatosis ↑ (DAG↓), IR -
CIDEA	Downregulation KO [47, 110] KO in ob/ob by shRNA [46] ASO [111] Upregulation Adenovirus [46]	Hepatic steatosis ↓, IR↓ Hepatic steatosis ↓, IR↓ Hepatic steatosis ↓, body fat↓, IR↓ Hepatic steatosis↑
SEIPIN	Downregulation Adipose-specific KO [112] KO [49] Upregulation Transgenic mice overexpressing a short isoform of human BSCL2 in adipose [113]	Hepatic steatosis↑, IR↑, adipocyte hypertrophy and progressive lipodystrophy Hepatic steatosis↑, IR↑ Hepatic steatosis↑, IR↑, white adipose tissue ↓, lipolysis ↑

Abbreviations: KO; knockout, ASO; antisense oligonucleotide, IR; insulin resistance.

Table 2. Experimental modification of lipid droplet protein and the effect on steatosis.

3.3. PLIN3

PLIN3 was originally named tail-interacting protein of 47 kDa and ubiquitously expressed among tissues. PLIN3 is localized at the cytosol and lipid droplet [9, 26]. It is also implicated in intracellular trafficking of lysosomal enzymes [9]. Four-helix bundle in PLIN3 has been

suggested to contribute to fatty acid binding and lipid droplet recruitment [9]. PLIN2 and PLIN3 share similar functions, and both proteins cannot bind CGI-58 and, therefore, influence lipolysis [27]. Co-expression of PLIN2 and PLIN3 has been reported in many tissues; however, a distinct role of PLIN3 has not been clearly identified. Interestingly, PLIN3 expression was also observed in stellate cells in the liver [17]. Lipopolysaccharide treatment also predominantly stimulated PLIN3 expression in HL-60-derived neutrophils [28]. Knockdown of PLIN3 via siRNA decreased a lipid droplet formation as well as PGE₂ secretion. This observation was unique to PLIN3, and PLIN2 was not detected under such conditions. This implies that PLIN3 might be implicated in a lipid droplet formation related to conditions with cellular stresses.

Another unique observation to PLIN3 was that mice lacking mTORC2 (mammalian target of rapamycin complex) activity in skeletal muscle showed increased fat mass and PLIN3 [29]. This was due to an increased AMPK activity. mTORC plays an important role in insulin signaling. However, the implication of PLIN3 in insulin resistance has not yet been addressed.

3.4. PLIN4

PLIN4 was originally called S3-12 and is the only PAT protein that does not contain the PAT domain. Its molecular weight is three times higher than other PAT proteins. The protein has been shown to present at cytosol and lipid droplets [30]. Its expression was induced during adipogenesis [31]. PLIN4-KO mice present no phenotypic changes in adipose tissues, whereas TG content in heart tissues was significantly reduced [32]. PLIN5 expression was also decreased under such condition. Given close location of PLIN4 and PLIN5 in chromosome 19 in human, it was suggested a potential transcriptional interference between two genes. PLIN4 remains the least studied PAT protein, and further investigations are required to understand PLIN4 roles in lipid droplet physiology.

3.5. PLIN5

PLIN5 was discovered by different researchers simultaneously and named as myocardial lipid droplet protein (MDLP), OXPAT, or lipid storage droplet protein 5 (LSDP5) [33, 34]. This was due to a high expression of PLIN5 in heart and other oxidative tissues such as skeletal muscle and liver. PLIN5 expression is also reported in pancreatic beta cells and hepatic stellate cells [35, 36]. A unique feature with PLIN5 is that mitochondria are physically recruited to lipid droplets expressing high PLIN5 (**Figure 2**) [37, 38]. Its expression is regulated by PPAR- α , and most importantly, PLIN5 plays roles in regulating cellular fat oxidation. PLIN5 stabilizes lipid droplets by sequestering fatty acids, and because PLIN5 can recruit mitochondria to lipid droplet surface, it facilitates to release fatty acids to mitochondria for the oxidation [39]. Given its gatekeeper roles on the lipid oxidation, it has been suggested that PLIN5 could protect cardiac myocytes and hepatocytes from oxidative stress [38, 40]. PLIN5 leads several modifications on the lipid metabolism as well as insulin sensitivity, and details are discussed in a separate paragraph.

AML12 cells

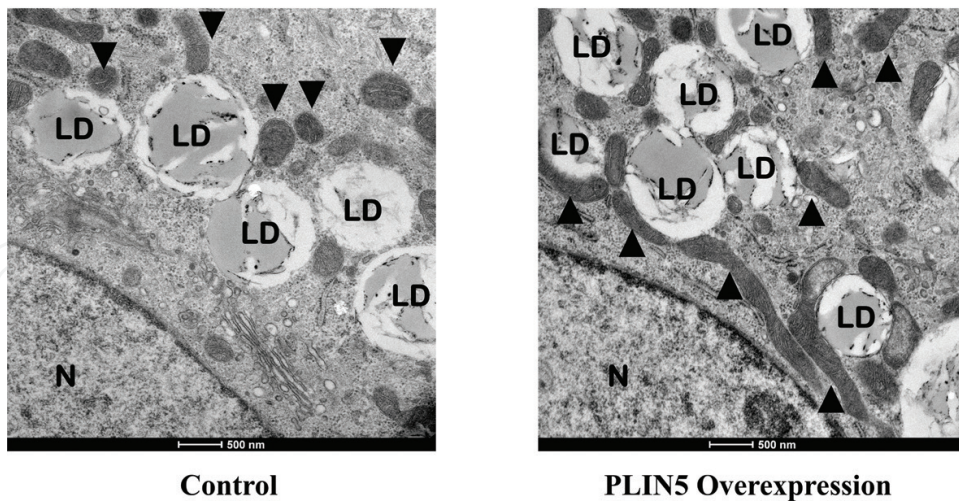


Figure 2. Electron microscopy image of hepatocyte overexpressing PLIN5. When PLIN5 is overexpressed, mitochondria (closed triangle) is highly recruited toward lipid droplets (LD). N: nucleus.

3.6. CIDE proteins

Cell-death-inducing DNA fragmentation-factor 45-like effector (CIDE) proteins have also been found on a lipid droplet surface. CIDEA expression is controlled by SREBP-1c and found in a fatty liver [41, 42]. CIDEB is constitutively expressed in a liver and plays a role in VLDL production [43, 44]. Interestingly, it has been reported that CIDEB and PLIN2 exert opposite functions for a control of VLDL lipidation [44]. CIDEc, is also named as fat-specific protein 27 (FSP27), found as a cofactor of PLIN1 for lipid droplet fusion in adipocytes [15]. CIDEc is regulated by PPAR- α /gamma [42, 45]. Like CIDEA, hepatic CIDEc was induced in leptin-deficient *ob/ob* mice. It has also been demonstrated that CIDEc overexpression induces steatosis, whereas knockdown of CIDEc alleviates hepatic fat accumulation in *ob/ob* mice lacking hepatic PPAR γ [46]. Effect of CIDEc on mitochondrial activity and insulin sensitivity is an active research field of today [15, 47, 48]. Toy et al. demonstrated that white adipocytes from CIDEc KO mice had accelerated mitochondrial activities and increased proteins and size, leading to brown adipocyte characteristics.

3.7. SEIPIN

SEIPIN is highly expressed in brain, testis, and adipose tissue. Mutations in SEIPIN are known as Berardinelli-Seip congenital lipodystrophy (BSCL), a rare recessive disorder characterized by near absence of adipose tissue accompanied by a severe insulin resistance [49]. Several studies convincingly demonstrated that SEIPIN plays a crucial role in adipogenesis, lipid droplet homeostasis and lipolysis. It is also well known that human BSCL patients and mice lacking SEIPIN develop diabetes and severe hepatic steatosis. Interestingly, our previous studies demonstrated that SEIPIN expression seems to be dependent on lipid droplet size (**Figure 3**), and the low SEIPIN expresser had an impaired gluconeogenesis in NAFLD patients (personal observation).

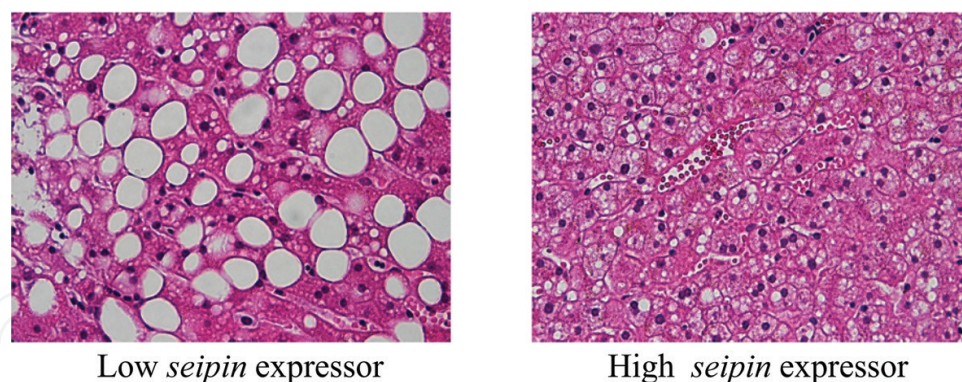


Figure 3. Liver histology from NAFLD patients.

3.8. PNPLA3 and PNPLA2

Patatin-like phospholipase domain-containing protein 3 (PNPLA3), also called adiponutrin, was consistently associated with NAFLD in GWAS observations [50, 51]. The single nucleotide polymorphism (SNP) in PNPLA3 was identified as a major determinant of hepatic fat content from exome-wide association studies. This is the rs738409 C > G SNP encoding for the isoleucine to methionine substitution [50]. PNPLA3 is expressed in the retina, hepatic stellate cells, and hepatocytes and localized in the endoplasmic reticulum and at a surface of lipid droplets. A mechanism by which PNPLA3 leads the hepatic steatosis phenotype has not been clearly understood. PNPLA3 has a triglyceride and retinylpalmitate esterase activity [52–54], suggesting a possible link to hepatic fat accumulation. However, PNPLA3 knockout mice did not develop hepatic steatosis [55, 56]. Mice having *Pnpla3*^{i148m} knock-in recently showed increased hepatic steatosis [57]. The role of PNPLA3 in the development of NAFLD still remains elusive.

PNPLA2 is known as adipose triglyceride transfer protein (ATGL) and is expressed on lipid droplet surface at a basal condition. Its activity is strongly influenced by PLINs [25]. As shown in **Figure 1**, ATGL is the first enzyme hydrolyzing neutral lipids.

4. Expression of lipid droplet proteins in human NAFLD

Lipid droplet proteins are highly expressed in human NAFLD. PLIN1, PLIN2, and PLIN3 were upregulated in NAFLD [18, 58, 59]. And the distribution of PLINs seems to depend on the lipid droplet size [17, 18]. PLIN2 was also observed in stellate cells [18, 59]. We have compared the expression of different lipid droplet proteins in human NAFLD. The steatosis was judged by a histological assessment showing four different grades (S0 < S1 < S2 < S3). Despite a similar BMI among different groups, the gene expression of lipid droplet proteins increased depending on the degree of steatosis (**Figure 4A**). When compared the livers from patients with or without type 2 diabetes who had a similar degree of hepatic steatosis (S3), the expressions of lipid droplet proteins were significantly lower in diabetic patients than in nondiabetic individuals (**Figure 4B**). This result implies possible link between lipid droplet proteins and hepatic insulin signaling.

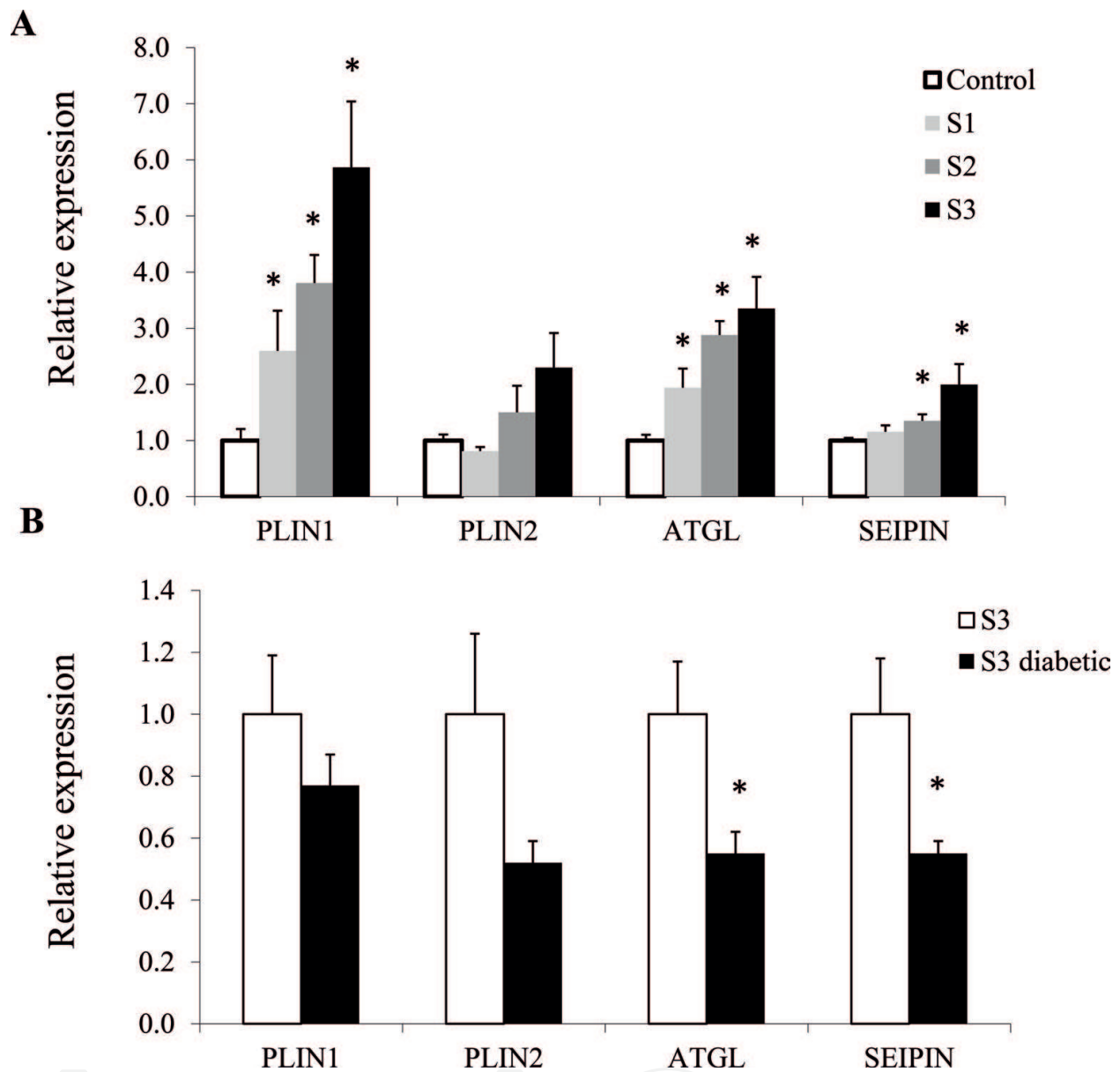


Figure 4. Expression of lipid droplet proteins in human NAFLD. NAFLD patients were separated into 5 groups depending on their degree of fatty liver. Gene expression of lipid droplets genes were analysed and compared among groups. (A) NALFD non diabetic, (B) Comparison of S3 NAFLD patients with or without type 2 diabetes.

5. Experimental modification of lipid droplet proteins and TG accumulation in hepatocytes

It has been shown that modifications on the lipid droplet proteins have striking impacts on lipid droplet biology. Hepatic cell line AML-12 is used to study the effect of downregulation of SEIPIN gene. Downregulation of the gene markedly altered lipid droplets size distributions and increased smaller droplets size, suggesting a default in lipid droplet maturation (Figure 5). When PLIN5 was knocked down in hepatocytes, the TG content dramatically

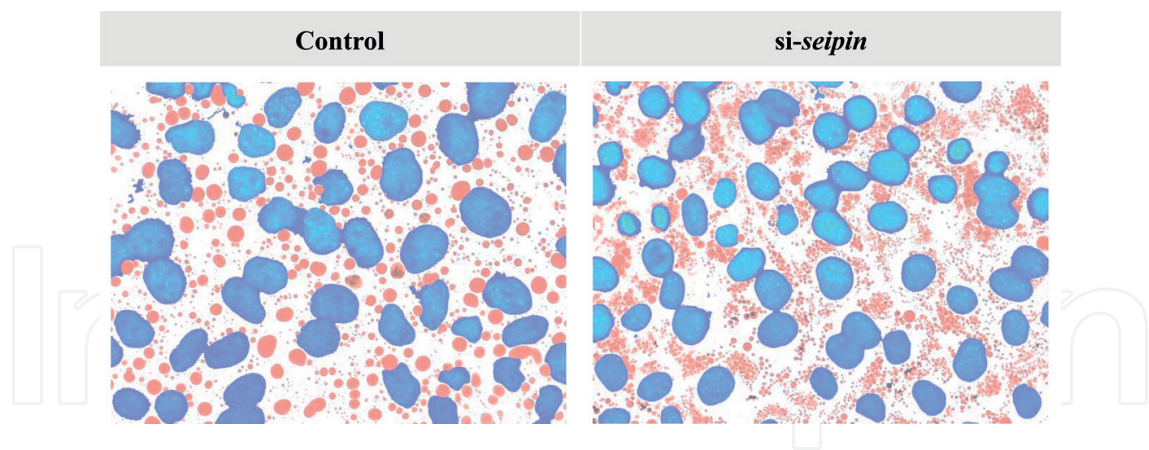


Figure 5. Lipid droplet morphology when SEIPIN was downregulated. Downregulation of SEIPIN by siRNA resulted in a fractionation of lipid droplets.

decreased due to accelerated lipolysis and beta-oxidation [60]. PPAR-alpha was required for the PLIN5-induced beta-oxidation. On the contrary, the overexpression of PLIN5 leads a significant increase in cellular TG. Therefore, modifications on lipid droplets proteins govern intracellular TG content in hepatocytes, although the mechanisms and phenotypes (lipid droplet size and/or localization) might be depending on a type of lipid droplet proteins involved.

6. Experimental modification of lipid droplet proteins in mice

Table 2 displays animals with genetic modifications in lipid droplet proteins and their effect on steatosis and metabolism (**Table 2**). PLIN1 KO mice present reduced body fat as well as fat oxidation judged by respiratory quotient [61]. Another research group also studied the PLIN1 KO mice and found increased lipolysis and cardiac hypertrophy [62]. PLIN2 null mice studied by different scientific groups consistently demonstrated a protection against diet-induced obesity, fatty liver, and alcohol-induced fatty accompanied by an improved insulin sensitivity [63–66]. Similar results were obtained in mice treated by PLIN2 antisense oligonucleotide, demonstrating improved insulin sensitivity [64]. PLIN3 downregulation was studied by using antisense oligonucleotide (ASO) in C57BL/6 J mice fed high fat diet. The reduction in PLIN3 significantly decreased hepatic fat content and improved glucose tolerance as well as insulin sensitivity in liver, adipose, and skeletal muscle [67]. Chen et al. generated PLIN4 KO mice [32], which showed no major modification in body weight and fat mass. Interestingly, only cardiac TG content was significantly reduced. The KO mice did not alter any gene expression involved in glucose and lipid metabolism. PLIN5 KO mice also developed cardiac dysfunction. The PLIN5 KO animal displayed reduced hepatic steatosis with increased mitochondrial proliferation, lipotoxic injury in the hepatocytes [40]. Interestingly, overexpression of PLIN5 by use of adenovirus technology demonstrated a development of severe hepatic steatosis without a sign of hepatic insulin resistance [68].

Although a strong link between PNPLA3 and hepatic steatosis has been demonstrated in GWAS studies [50], absence of PNPLA3 gene did not influence TG hydrolysis, nor did

hepatic steatosis [55, 56]. One of a pioneer study on the lipid droplet biology and insulin resistance was the PNPLA2/ATGL KO mice published in 2006 [69]. Mice with global ATGL deletion induced TG accumulation in all tissues [69]. Surprisingly, despite the severe steatosis, the mice exhibit enhanced glucose tolerance and insulin sensitivity. Later on, Wu et al. studied the effect of liver-specific deletion of ATGL [70]. The liver-specific KO mice progressively developed a severe form of hepatic steatosis; however, the hepatic DAG content was 50-fold lower and had comparable plasma glucose, TG, and cholesterol levels to those of controls.

CIDEA/FSP27 downregulation was studied in *Fsp27^{-/-}* and *ob/ob* × *Fsp27^{-/-}* mice [46, 47], demonstrating decreased hepatic steatosis and insulin resistance. These animals are resistant to diet-induced obesity, dyslipidemia. Deletion of SEIPIN, as seen in BSCL patients, leads to severe form of hepatic steatosis accompanied by insulin resistance [49].

7. NAFLD and insulin resistance, implication of lipid droplet proteins

It has been widely accepted that increased TG content in ectopic organs, especially in the liver and skeletal muscle, induces insulin resistance [71–73]. Despite strong evidences demonstrating the link, there are also a few studies to show that hepatic steatosis can be dissociated from

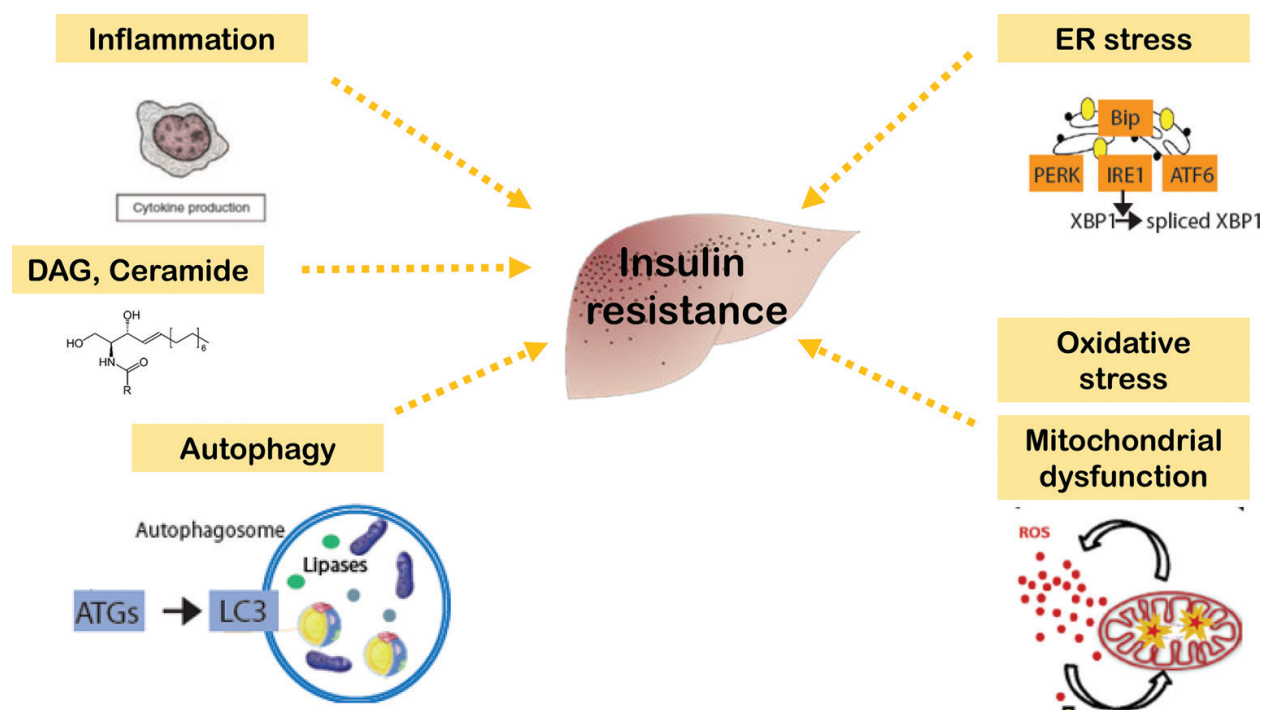


Figure 6. Different events leading hepatic insulin resistance in NAFLD. In human NAFLD, increased diacylglycerols (DAG) and ceramides are often observed. Under such conditions, autophagy is frequently decreased, leading to a disturbed lipid handling as well as increased ER stress and oxidative stress. These factors are known to induce insulin resistance.

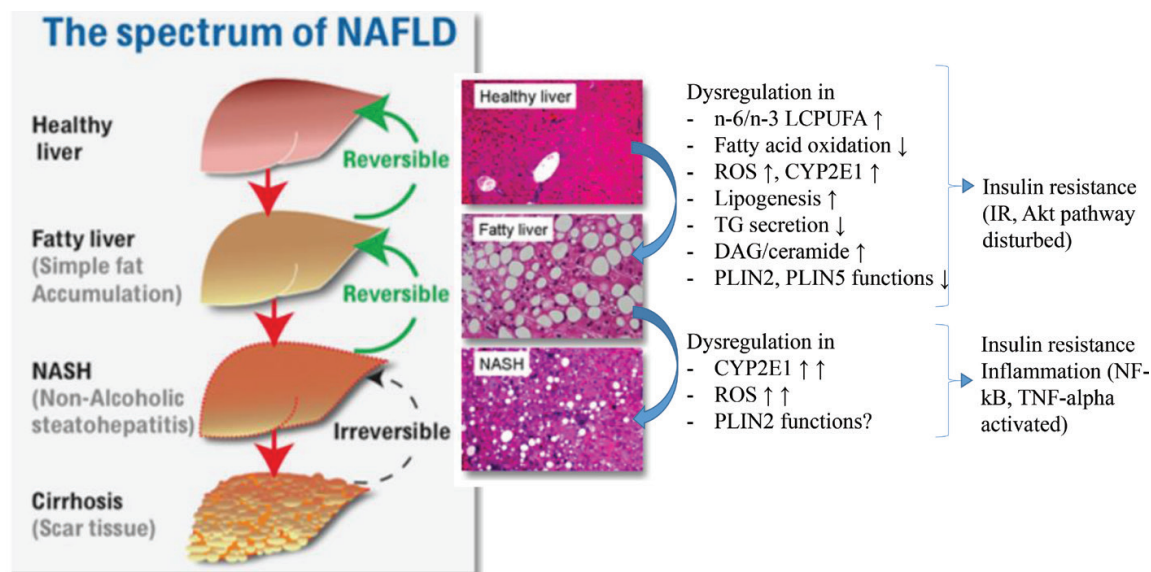


Figure 7. Dysregulated factors during steatosis and NASH development. Hepatic steatosis has many dysregulation in lipid metabolism, leading to insulin resistance. As a result of accelerated cellular damages due to oxidative stress and ER stress, inflammation is installed and NASH development starts.

insulin resistance such as liver-specific microsomal TG transfer protein (MTP) knockout mice [74]. While it is not physiological context at all, it may help to understand the contribution of each gene to the development of hepatic steatosis and insulin resistance at a molecular level. In a steatotic liver from the MTP knockout mice, we had identified upregulations of different lipid droplet proteins such as PLIN5, PLIN2, and SEIPIN. We then hypothesized that the upregulation of these genes was not deleterious in terms of hepatic insulin sensitivity. Indeed, the overexpression of these lipid droplet proteins always induced TG accumulation in hepatocytes; however, none of these *in vitro* models developed apparent insulin resistance. If true, what mechanisms possibly explain the development of hepatic insulin resistance in NAFLD? Different theories are briefly introduced below (**Figures 6 and 7**).

8. Ceramide/Diacylglycerol theory

In a steatotic liver, different lipid species are accumulated such as diacylglycerol (DAG) and ceramide. It was postulated that the accumulation of DAG and/or ceramide induced insulin resistance [75]. However, some of the models of NAFLD present increased hepatic DAG and ceramide without insulin resistance. Interestingly, a recent study demonstrated that the abnormal compartmentalization of these lipid intermediates, rather than total lipid content, is what might truly interfere with the insulin sensitivity [76]. This might support some inconsistent results from various mouse models studied by modulating PLINs (**Table 2**). DAG induces PKC epsilon translocation to the plasma membrane, inhibiting the intracellular kinase domain of the insulin receptor [77, 78]. In the case of PLIN5 overexpressed liver that was dissociated from hepatic insulin resistance, we did not observe the PKC epsilon translocation to the plasma membrane despite significant increase in DAG (personal observation). Accumulation of ceramides in the plasma membrane has also been demonstrated to disturb insulin signaling [79], and we have only observed significant increase in some of ceramides. As the PLIN-induced hepatic steatosis might depend on the type

of PLIN proteins, each phenotype of hepatic steatosis needs to be finely studied. Therefore, the link between DAG/ceramide and hepatic insulin resistance in NAFLD requires more scientific investigations on each specific PLIN protein modification.

9. Autophagy theory

Selective autophagy process for a degradation of intracellular lipids is called lipophagy. The lipophagy is an additional mechanism that contributes to lipid droplet breakdown, and PLIN2 has been shown to play a role in this process [80, 81]. Autophagy is also involved in delivering fatty acids to lipid droplets for a lipolysis and mitochondrial oxidation [82, 83]. Inhibition of autophagy has been shown to accelerate lipid accumulation and impair beta-oxidation in the liver [84, 85]. Interestingly, *atg7* inhibition via shRNA in a mouse liver resulted in an impairment of autophagy system together with an impaired insulin signaling and an induced ER stress [85]. These effects were completely reversed when a downstream target *atg5* was blocked. This strongly supports an idea that autophagy plays one of a key role in insulin signaling pathway. How the lipophagy and lipid droplet proteins are involved in the insulin resistance are still open questions.

10. ER stress theory

Hepatic ER deals with redox regulation, glucose deprivation, protein synthesis, VLDL assembly and secretion, and cholesterol biosynthesis. It has been suggested that ER stress is implicated in insulin resistance, inflammation, and lipotoxicity, which are frequently observed in NAFLD patients [86]. Recently, Akoumi et al. tested a hypothesis that palmitate might induce ER stress by disturbing lipid droplet formation in cytosol and lead to an abnormal accumulation of lipid in an ER compartment. They found in cardiomyoblast cell line that palmitate-induced ER stress was associated with an abnormal storage of DAGs located in the ER. Concomitantly, significant degradation of PLIN2 but not PLIN3 or PLIN5 was observed, suggesting a potential scenario of PLIN2 as a protector/regulator of ER stress. Pharmacological ER stress also demonstrated a role of PLIN2 in ER stress-induced lipogenesis [87]. Author suggested that the presence (or induction) of PLIN2 during the ER stress might protect hepatocytes by storing lipids in a cytosolic compartment. It was a very tentative hypothesis; however, it was not supported at least in *Saccharomyces cerevisiae* that an absence of lipid droplet formation did not affect cell viability during ER stress [88]. There are still many remaining questions to be answered in the field of ER stress and the role of lipid droplet proteins. Their implication on metabolic disease such as NAFLD is one of a key aspect to be further investigated.

11. Oxidative stress theory

Reactive oxygen species (ROS) is produced in a highly regulated manner in multiple organelles such as the ER and mitochondria. ROS is produced as a result of oxidative protein

folding and mitochondrial respiration. NAFLD, especially NASH (nonalcoholic steatohepatitis), has been strongly linked with the biomarkers of oxidative stress [89, 90]. In a case of NAFLD development, beta-oxidation can be abnormally stimulated due to an excess fat accumulation, which surcharges mitochondrial system for the oxidation. As a result, abnormal ROS production at complex I of the mitochondrial electron-transport chain is induced, leading to the mitochondrial oxidative damage. Under such condition, the redox imbalance, lower antioxidant potential, and an enhanced free-radical activity lead to a significant reduction in systemic antioxidant capacity of plasma [91]. These conditions are indeed considered as a trigger of “second hit,” which then induces NASH. Cytochrome P450 E12 (CYP2E1), a member of the cytochrome P450 mixed-function oxidase system, has been found as a marker of NASH, which distinguishes NASH from hepatic steatosis [92]. The induction of liver microsomal CYP2E1 contributes as a major free-radical source that aggravates oxidative stress in NASH. In addition to ROS production, cytokine is produced progressing a fatty liver to NASH. A depletion of *n*-3 long-chain polyunsaturated fatty acids (LCPUFA) was also found in NAFLD/NASH. *n*-3 LCPUFA has been shown to highly influence signaling pathway in a liver and contributes to NAFLD development [93, 94]. The *n*-3 LCPUFA downregulates sterol regulatory element-binding protein-1 (SRBBP-1), therefore inhibiting *de novo* lipogenesis. It could also act as a ligand activators of PPAR- α , therefore stimulating fatty acid oxidation. The decreased *n*-3 LCPUFA and increased ratio of *n*-6/*n*-3 LCPUFA were reported in NAFLD/NASH patients. These conditions accelerate high oxidative stress and hepatocellular injury. Interestingly, Fujii et al. demonstrated in NAFLD/NASH patients that PLIN2 seemed preferentially expressed in droplets of ballooned hepatocytes. The presence of PLIN2-positive ballooned hepatocytes was indeed correlated with inflammation [18]. Indeed, liver-specific knockout of PLIN2 in mice had reduced hepatic inflammation [95]. The role of PLIN2 on hepatic inflammation in NAFLD/NASH needs further investigation.

As indicated previously, PLIN5 has strong interactions with mitochondrial functions. Zheng et al. studied myocardium from PLIN5-deficient mice and found that the ROS production and malondialdehyde levels, a marker for oxidative stress, were significantly increased [96]. In this model, the phosphorylation of PI3K and Akt, which was induced by ischemia/reperfusion injury, was greatly reduced by PLIN5 deletion in the myocardium. It remains an open question whether the PLIN5 may have an impact on NASH development by interfering with the ROS production.

12. Conclusion

Research on lipid droplet proteins and lipid droplet biology has gained strong insights during the last decades. Most of the lipid droplet proteins are induced in NAFLD and required for a normal adipogenesis. Given specific expression patterns and roles of lipid droplet proteins, the phenotypes lead by experimental modifications of the lipid droplets proteins displayed diverse patterns. Further research is required to clarify their roles in NAFLD, specially by focusing on interactions of different lipid droplet proteins and other functional

proteins, lipid droplet localization, interaction with mitochondria as well as fatty acid compositions in the droplets. Their roles in mitochondrial physiology are a particular importance to understand how lipid droplet protein could influence hepatic energy metabolism and insulin signaling.

Author details

Kaori Minehira^{1*} and Philippe Gual²

*Address all correspondence to: kaori.minehiracastelli@rd.nestle.com

1 Nestlé Institute of Health Sciences, Lausanne, Switzerland

2 Université Côte d'Azur, INSERM, U1065, C3M, Team 8, Chronic liver diseases associated with obesity and alcohol, Nice, France

References

- [1] de Alwis NM, Day CP. Non-alcoholic fatty liver disease: The mist gradually clears. *Journal of Hepatology*. 2008;**48**(Suppl 1):S104-S112
- [2] Kaser S, Ebenbichler CF, Tilg H. Pharmacological and non-pharmacological treatment of non-alcoholic fatty liver disease. *International Journal of Clinical Practice*. 2010; **64**(7):968-983
- [3] Byrne CD, Targher GNAFLD. A multisystem disease. *Journal of Hepatology*. 2015; **62**(1 Suppl):S47-S64
- [4] Farese RV Jr, Walther TC. Lipid droplets finally get a little R-E-S-P-E-C-T. *Cell*. 2009; **139**(5):855-860
- [5] Tan JS, Seow CJ, Goh VJ, Silver DL. Recent advances in understanding proteins involved in lipid droplet formation, growth and fusion. *Journal of Genetics and Genomics*. 2014;**41**(5):251-259
- [6] Wang H, Bell M, Sreenivasan U, Hu H, Liu J, Dalen K, et al. Unique regulation of adipose triglyceride lipase (ATGL) by perilipin 5, a lipid droplet-associated protein. *The Journal of Biological Chemistry*. 2011;**286**(18):15707-15715
- [7] Greenberg AS, Egan JJ, Wek SA, Garty NB, Blanchette-Mackie EJ, Londos C. Perilipin, a major hormonally regulated adipocyte-specific phosphoprotein associated with the periphery of lipid storage droplets. *The Journal of Biological Chemistry*. 1991;**266**(17): 11341-11346
- [8] Jiang HP, Serrero G. Isolation and characterization of a full-length cDNA coding for an adipose differentiation-related protein. *Proceedings of the National Academy of Sciences of the United States of America*. 1992;**89**(17):7856-7860

- [9] Diaz E, Pfeffer SR. TIP47: A cargo selection device for mannose 6-phosphate receptor trafficking. *Cell*. 1998;**93**(3):433-443
- [10] Kimmel AR, Brasaemle DL, McAndrews-Hill M, Sztalryd C, Londos C. Adoption of PERILIPIN as a unifying nomenclature for the mammalian PAT-family of intracellular lipid storage droplet proteins. *Journal of Lipid Research*. 2010;**51**(3):468-471
- [11] Miura S, Gan JW, Brzostowski J, Parisi MJ, Schultz CJ, Londos C, et al. Functional conservation for lipid storage droplet association among Perilipin, ADRP, and TIP47 (PAT)-related proteins in mammals, drosophila, and Dictyostelium. *The Journal of Biological Chemistry*. 2002;**277**(35):32253-32257
- [12] Itabe H, Yamaguchi T, Nimura S, Sasabe N. Perilipins: A diversity of intracellular lipid droplet proteins. *Lipids in Health and Disease*. 2017;**16**(1):83
- [13] Brasaemle DL, Rubin B, Harten IA, Gruia-Gray J, Kimmel AR, Londos C. Perilipin a increases triacylglycerol storage by decreasing the rate of triacylglycerol hydrolysis. *The Journal of Biological Chemistry*. 2000;**275**(49):38486-38493
- [14] Blanchette-Mackie EJ, Dwyer NK, Barber T, Coxey RA, Takeda T, Rondinone CM, et al. Perilipin is located on the surface layer of intracellular lipid droplets in adipocytes. *Journal of Lipid Research*. 1995;**36**(6):1211-1226
- [15] Sun Z, Gong J, Wu H, Xu W, Wu L, Xu D, et al. Perilipin1 promotes unilocular lipid droplet formation through the activation of Fsp27 in adipocytes. *Nature Communications*. 2013;**4**:1594
- [16] Caldwell SH, Ikura Y, Iezzoni JC, Liu Z. Has natural selection in human populations produced two types of metabolic syndrome (with and without fatty liver)? *Journal of Gastroenterology and Hepatology*. 2007;**22**(Suppl 1):S11-S19
- [17] Straub BK, Stoeffel P, Heid H, Zimbelmann R, Schirmacher P. Differential pattern of lipid droplet-associated proteins and de novo perilipin expression in hepatocyte steatogenesis. *Hepatology*. 2008;**47**(6):1936-1946
- [18] Fujii H, Ikura Y, Arimoto J, Sugioka K, Iezzoni JC, Park SH, et al. Expression of perilipin and adipophilin in nonalcoholic fatty liver disease; relevance to oxidative injury and hepatocyte ballooning. *Journal of Atherosclerosis and Thrombosis*. 2009;**16**(6):893-901
- [19] Takahashi Y, Shinoda A, Furuya N, Harada E, Arimura N, Ichi I, et al. Perilipin-mediated lipid droplet formation in adipocytes promotes sterol regulatory element-binding protein-1 processing and triacylglyceride accumulation. *PLoS One*. 2013;**8**(5):e64605
- [20] Beier JL, McClain CJ. Mechanisms and cell signaling in alcoholic liver disease. *Biological Chemistry*. 2010;**391**(11):1249-1264
- [21] Motomura W, Inoue M, Ohtake T, Takahashi N, Nagamine M, Tanno S, et al. Up-regulation of ADRP in fatty liver in human and liver steatosis in mice fed with high fat diet. *Biochemical and Biophysical Research Communications*. 2006;**340**(4):1111-1118

- [22] Carr RM, Dhir R, Yin X, Agarwal B, Ahima RS. Temporal effects of ethanol consumption on energy homeostasis, hepatic steatosis, and insulin sensitivity in mice. *Alcoholism, Clinical and Experimental Research*. 2013;**37**(7):1091-1099
- [23] Magne J, Aminoff A, Perman Sundelin J, Mannila MN, Gustafsson P, Hultenby K, et al. The minor allele of the missense polymorphism Ser251Pro in perilipin 2 (PLIN2) disrupts an alpha-helix, affects lipolysis, and is associated with reduced plasma triglyceride concentration in humans. *The FASEB Journal*. 2013;**27**(8):3090-3099
- [24] Bell M, Wang H, Chen H, McLenithan JC, Gong DW, Yang RZ, et al. Consequences of lipid droplet coat protein downregulation in liver cells: Abnormal lipid droplet metabolism and induction of insulin resistance. *Diabetes*. 2008;**57**(8):2037-2045
- [25] Coleman RA, Mashek DG. Mammalian triacylglycerol metabolism: Synthesis, lipolysis, and signaling. *Chemical Reviews*. 2011;**111**(10):6359-6386
- [26] Lu X, Gruia-Gray J, Copeland NG, Gilbert DJ, Jenkins NA, Londos C, et al. The murine perilipin gene: The lipid droplet-associated perilipins derive from tissue-specific, mRNA splice variants and define a gene family of ancient origin. *Mammalian Genome*. 2001;**12**(9):741-749
- [27] Patel S, Yang W, Kozusko K, Saudek V, Savage DB. Perilipins 2 and 3 lack a carboxy-terminal domain present in perilipin 1 involved in sequestering ABHD5 and suppressing basal lipolysis. *Proceedings of the National Academy of Sciences of the United States of America*. 2014;**111**(25):9163-9168
- [28] Nose F, Yamaguchi T, Kato R, Aiuchi T, Obama T, Hara S, et al. Crucial role of perilipin-3 (TIP47) in formation of lipid droplets and PGE2 production in HL-60-derived neutrophils. *PLoS One*. 2013;**8**(8):e71542
- [29] Kleinert M, Parker BL, Chaudhuri R, Fazakerley DJ, Serup A, Thomas KC, et al. mTORC2 and AMPK differentially regulate muscle triglyceride content via Perilipin 3. *Molecular Metabolism*. 2016;**5**(8):646-655
- [30] Wolins NE, Skinner JR, Schoenfish MJ, Tzekov A, Bensch KG, Bickel PE. Adipocyte protein S3-12 coats nascent lipid droplets. *The Journal of Biological Chemistry*. 2003;**278**(39):37713-37721
- [31] Nimura S, Yamaguchi T, Ueda K, Kadokura K, Aiuchi T, Kato R, et al. Olanzapine promotes the accumulation of lipid droplets and the expression of multiple perilipins in human adipocytes. *Biochemical and Biophysical Research Communications*. 2015;**467**(4):906-912
- [32] Chen W, Chang B, Wu X, Li L, Sleeman M, Chan L. Inactivation of Plin4 downregulates Plin5 and reduces cardiac lipid accumulation in mice. *American Journal of Physiology. Endocrinology and Metabolism*. 2013;**304**(7):E770-E779
- [33] Yamaguchi T, Matsushita S, Motojima K, Hirose F, Osumi TMLDP. A novel PAT family protein localized to lipid droplets and enriched in the heart, is regulated by peroxisome proliferator-activated receptor alpha. *The Journal of Biological Chemistry*. 2006;**281**(20):14232-14240

- [34] Dalen KT, Dahl T, Holter E, Arntsen B, Londos C, Sztalryd C, et al. LSDP5 is a PAT protein specifically expressed in fatty acid oxidizing tissues. *Biochimica et Biophysica Acta*. 2007;**1771**(2):210-227
- [35] Trevino MB, Machida Y, Hallinger DR, Garcia E, Christensen A, Dutta S, et al. Perilipin 5 regulates islet lipid metabolism and insulin secretion in a cAMP-dependent manner: Implication of its role in the postprandial insulin secretion. *Diabetes*. 2015;**64**(4):1299-1310
- [36] Lin J, Chen A. Perilipin 5 restores the formation of lipid droplets in activated hepatic stellate cells and inhibits their activation. *Laboratory Investigation*. 2016;**96**(7):791-806
- [37] Bosma M, Minnaard R, Sparks LM, Schaart G, Losen M, de Baets MH, et al. The lipid droplet coat protein perilipin 5 also localizes to muscle mitochondria. *Histochemistry and Cell Biology*. 2012;**137**(2):205-216
- [38] Kuramoto K, Okamura T, Yamaguchi T, Nakamura TY, Wakabayashi S, Morinaga H, et al. Perilipin 5, a lipid droplet-binding protein, protects heart from oxidative burden by sequestering fatty acid from excessive oxidation. *The Journal of Biological Chemistry*. 2012;**287**(28):23852-23863
- [39] Wang H, Sreenivasan U, Hu H, Saladino A, Polster BM, Lund LM, et al. Perilipin 5, a lipid droplet-associated protein, provides physical and metabolic linkage to mitochondria. *Journal of Lipid Research*. 2011;**52**(12):2159-2168
- [40] Wang C, Zhao Y, Gao X, Li L, Yuan Y, Liu F, et al. Perilipin 5 improves hepatic lipotoxicity by inhibiting lipolysis. *Hepatology*. 2015;**61**(3):870-882
- [41] Wang R, Kong X, Cui A, Liu X, Xiang R, Yang Y, et al. Sterol-regulatory-element-binding protein 1c mediates the effect of insulin on the expression of Cidea in mouse hepatocytes. *The Biochemical Journal*. 2010;**430**(2):245-254
- [42] Zhou L, Xu L, Ye J, Li D, Wang W, Li X, et al. Cidea promotes hepatic steatosis by sensing dietary fatty acids. *Hepatology*. 2012;**56**(1):95-107
- [43] Li JZ, Ye J, Xue B, Qi J, Zhang J, Zhou Z, et al. Cideb regulates diet-induced obesity, liver steatosis, and insulin sensitivity by controlling lipogenesis and fatty acid oxidation. *Diabetes*. 2007;**56**(10):2523-2532
- [44] Li X, Ye J, Zhou L, Gu W, Fisher EA, Li P. Opposing roles of cell death-inducing DFF45-like effector B and perilipin 2 in controlling hepatic VLDL lipidation. *Journal of Lipid Research*. 2012;**53**(9):1877-1889
- [45] Xu MJ, Cai Y, Wang H, Altamirano J, Chang B, Bertola A, et al. Fat-specific protein 27/CIDEC promotes development of alcoholic Steatohepatitis in mice and humans. *Gastroenterology*. 2015;**149**(4):1030-1041 e6
- [46] Matsusue K, Kusakabe T, Noguchi T, Takiguchi S, Suzuki T, Yamano S, et al. Hepatic steatosis in leptin-deficient mice is promoted by the PPARgamma target gene Fsp27. *Cell Metabolism*. 2008;**7**(4):302-311

- [47] Toh SY, Gong J, Du G, Li JZ, Yang S, Ye J, et al. Up-regulation of mitochondrial activity and acquirement of brown adipose tissue-like property in the white adipose tissue of fsp27 deficient mice. *PLoS One*. 2008;**3**(8):e2890
- [48] Gong J, Sun Z, Wu L, Xu W, Schieber N, Xu D, et al. Fsp27 promotes lipid droplet growth by lipid exchange and transfer at lipid droplet contact sites. *The Journal of Cell Biology*. 2011;**195**(6):953-963
- [49] Dollet L, Magre J, Cariou B, Prieur X. Function of seipin: New insights from Bslc2/seipin knockout mouse models. *Biochimie*. 2014;**96**:166-172
- [50] Romeo S, Kozlitina J, Xing C, Pertsemlidis A, Cox D, Pennacchio LA, et al. Genetic variation in PNPLA3 confers susceptibility to nonalcoholic fatty liver disease. *Nature Genetics*. 2008;**40**(12):1461-1465
- [51] Kitamoto T, Kitamoto A, Yoneda M, Hyogo H, Ochi H, Nakamura T, et al. Genome-wide scan revealed that polymorphisms in the PNPLA3, SAMM50, and PARVB genes are associated with development and progression of nonalcoholic fatty liver disease in Japan. *Human Genetics*. 2013;**132**(7):783-792
- [52] He S, McPhaul C, Li JZ, Garuti R, Kinch L, Grishin NV, et al. A sequence variation (I148M) in PNPLA3 associated with nonalcoholic fatty liver disease disrupts triglyceride hydrolysis. *The Journal of Biological Chemistry*. 2010;**285**(9):6706-6715
- [53] Pingitore P, Pirazzi C, Mancina RM, Motta BM, Indiveri C, Pujia A, et al. Recombinant PNPLA3 protein shows triglyceride hydrolase activity and its I148M mutation results in loss of function. *Biochimica et Biophysica Acta*. 2014;**1841**(4):574-580
- [54] Pirazzi C, Valenti L, Motta BM, Pingitore P, Hedfalk K, Mancina RM, et al. PNPLA3 has retinyl-palmitate lipase activity in human hepatic stellate cells. *Human Molecular Genetics*. 2014;**23**(15):4077-4085
- [55] Basantani MK, Sitnick MT, Cai L, Brenner DS, Gardner NP, Li JZ, et al. Pnpla3/Adiponutrin deficiency in mice does not contribute to fatty liver disease or metabolic syndrome. *Journal of Lipid Research*. 2011;**52**(2):318-329
- [56] Chen W, Chang B, Li L, Chan L. Patatin-like phospholipase domain-containing 3/adiponutrin deficiency in mice is not associated with fatty liver disease. *Hepatology*. 2010;**52**(3):1134-1142
- [57] Smagris E, BasuRay S, Li J, Huang Y, Lai KM, Gromada J, et al. Pnpla3I148M knockin mice accumulate PNPLA3 on lipid droplets and develop hepatic steatosis. *Hepatology*. 2015;**61**(1):108-118
- [58] Pawella LM, Hashani M, Eiteneuer E, Renner M, Bartenschlager R, Schirmacher P, et al. Perilipin discerns chronic from acute hepatocellular steatosis. *Journal of Hepatology*. 2014;**60**(3):633-642
- [59] Straub BK, Gyoengyoesi B, Koenig M, Hashani M, Pawella LM, Herpel E, et al. Adipophilin/perilipin-2 as a lipid droplet-specific marker for metabolically active cells and diseases associated with metabolic dysregulation. *Histopathology*. 2013;**62**(4):617-631

- [60] Li H, Song Y, Zhang LJ, Gu Y, Li FF, Pan SY, et al. LSDP5 enhances triglyceride storage in hepatocytes by influencing lipolysis and fatty acid beta-oxidation of lipid droplets. *PLoS One*. 2012;**7**(6):e36712
- [61] Beylot M, Neggazi S, Hamlat N, Langlois D, Forcheron F. Perilipin 1 ablation in mice enhances lipid oxidation during exercise and does not impair exercise performance. *Metabolism*. 2012;**61**(3):415-423
- [62] Liu S, Geng B, Zou L, Wei S, Wang W, Deng J, et al. Development of hypertrophic cardiomyopathy in perilipin-1 null mice with adipose tissue dysfunction. *Cardiovascular Research*. 2015;**105**(1):20-30
- [63] Varela GM, Antwi DA, Dhir R, Yin X, Singhal NS, Graham MJ, et al. Inhibition of ADRP prevents diet-induced insulin resistance. *American Journal of Physiology. Gastrointestinal and Liver Physiology*. 2008;**295**(3):G621-G628
- [64] Imai Y, Varela GM, Jackson MB, Graham MJ, Crooke RM, Ahima RS. Reduction of hepatosteatosis and lipid levels by an adipose differentiation-related protein antisense oligonucleotide. *Gastroenterology*. 2007;**132**(5):1947-1954
- [65] McManaman JL, Bales ES, Orlicky DJ, Jackman M, MacLean PS, Cain S, et al. Perilipin-2-null mice are protected against diet-induced obesity, adipose inflammation, and fatty liver disease. *Journal of Lipid Research*. 2013;**54**(5):1346-1359
- [66] Carr RM, Peralta G, Yin X, Ahima RS. Absence of perilipin 2 prevents hepatic steatosis, glucose intolerance and ceramide accumulation in alcohol-fed mice. *PLoS One*. 2014;**9**(5):e97118
- [67] Carr RM, Patel RT, Rao V, Dhir R, Graham MJ, Crooke RM, et al. Reduction of TIP47 improves hepatic steatosis and glucose homeostasis in mice. *American Journal of Physiology. Regulatory, Integrative and Comparative Physiology*. 2012;**302**(8):R996-1003
- [68] Trevino MB, Mazur-Hart D, Machida Y, King T, Nadler J, Galkina EV, et al. Liver Perilipin 5 expression worsens Hepatosteatosis but not insulin resistance in high fat-fed mice. *Molecular Endocrinology*. 2015;**29**(10):1414-1425
- [69] Haemmerle G, Lass A, Zimmermann R, Gorkiewicz G, Meyer C, Rozman J, et al. Defective lipolysis and altered energy metabolism in mice lacking adipose triglyceride lipase. *Science*. 2006;**312**(5774):734-737
- [70] JW Wu, Wang SP, Alvarez F, Casavant S, Gauthier N, Abed L, et al. Deficiency of liver adipose triglyceride lipase in mice causes progressive hepatic steatosis. *Hepatology*. 2011;**54**(1):122-132
- [71] Rasouli N, Molavi B, Elbein SC, Kern PA. Ectopic fat accumulation and metabolic syndrome. *Diabetes, Obesity & Metabolism*. 2007;**9**(1):1-10
- [72] Boden G. Interaction between free fatty acids and glucose metabolism. *Current Opinion in Clinical Nutrition and Metabolic Care*. 2002;**5**(5):545-549
- [73] Kovacs P, Stumvoll M. Fatty acids and insulin resistance in muscle and liver. *Best Practice & Research. Clinical Endocrinology & Metabolism*. 2005;**19**(4):625-635

- [74] Minehira K, Young SG, Villanueva CJ, Yetukuri L, Oresic M, Hellerstein MK, et al. Blocking VLDL secretion causes hepatic steatosis but does not affect peripheral lipid stores or insulin sensitivity in mice. *Journal of Lipid Research*. 2008;**49**(9):2038-2044
- [75] Petersen MC, Shulman GI. Roles of diacylglycerols and ceramides in hepatic insulin resistance. *Trends in Pharmacological Sciences*. 2017;**38**(7):649-665
- [76] Cantley JL, Yoshimura T, Camporez JP, Zhang D, Jornayvaz FR, Kumashiro N, et al. CGI-58 knockdown sequesters diacylglycerols in lipid droplets/ER-preventing diacylglycerol-mediated hepatic insulin resistance. *Proceedings of the National Academy of Sciences of the United States of America*. 2013;**110**(5):1869-1874
- [77] Samuel VT, Liu ZX, Wang A, Beddow SA, Geisler JG, Kahn M, et al. Inhibition of protein kinase Cε prevents hepatic insulin resistance in nonalcoholic fatty liver disease. *The Journal of Clinical Investigation*. 2007;**117**(3):739-745
- [78] Dries DR, Gallegos LL, Newton AC. A single residue in the C1 domain sensitizes novel protein kinase C isoforms to cellular diacylglycerol production. *The Journal of Biological Chemistry*. 2007;**282**(2):826-830
- [79] Lipina C, Hundal HS. Sphingolipids: Agents provocateurs in the pathogenesis of insulin resistance. *Diabetologia*. 2011;**54**(7):1596-1607
- [80] Singh R, Kaushik S, Wang Y, Xiang Y, Novak I, Komatsu M, et al. Autophagy regulates lipid metabolism. *Nature*. 2009;**458**(7242):1131-1135
- [81] Tsai TH, Chen E, Li L, Saha P, Lee HJ, Huang LS, et al. The constitutive lipid droplet protein PLIN2 regulates autophagy in liver. *Autophagy*. 2017;**13**(7):1130-1144
- [82] Rambold AS, Cohen S, Lippincott-Schwartz J. Fatty acid trafficking in starved cells: Regulation by lipid droplet lipolysis, autophagy, and mitochondrial fusion dynamics. *Developmental Cell*. 2015;**32**(6):678-692
- [83] Shpilka T, Elazar Z. Lipid droplets regulate autophagosome biogenesis. *Autophagy*. 2015;**11**(11):2130-2131
- [84] Shpilka T, Welter E, Borovsky N, Amar N, Mari M, Reggiori F, et al. Lipid droplets and their component triglycerides and steryl esters regulate autophagosome biogenesis. *The EMBO Journal*. 2015;**34**(16):2117-2131
- [85] Yang L, Li P, Fu S, Calay ES, Hotamisligil GS. Defective hepatic autophagy in obesity promotes ER stress and causes insulin resistance. *Cell Metabolism*. 2010;**11**(6):467-478
- [86] Ashraf NU, Sheikh TA. Endoplasmic reticulum stress and oxidative stress in the pathogenesis of non-alcoholic fatty liver disease. *Free Radical Research*. 2015;**49**(12):1405-1418
- [87] Lee JS, Mendez R, Heng HH, Yang ZQ, Zhang K, Pharmacological ER. Stress promotes hepatic lipogenesis and lipid droplet formation. *American Journal of Translational Research*. 2012;**4**(1):102-113
- [88] Fei W, Wang H, Fu X, Bielby C, Yang H. Conditions of endoplasmic reticulum stress stimulate lipid droplet formation in *Saccharomyces cerevisiae*. *The Biochemical Journal*. 2009;**424**(1):61-67

- [89] Koek GH, Liedorp PR, Bast A. The role of oxidative stress in non-alcoholic steatohepatitis. *Clinica Chimica Acta*. 2011;**412**(15-16):1297-1305
- [90] Videla LA, Rodrigo R, Orellana M, Fernandez V, Tapia G, Quinones L, et al. Oxidative stress-related parameters in the liver of non-alcoholic fatty liver disease patients. *Clinical Science (London, England)*. 2004;**106**(3):261-268
- [91] Videla LA, Rodrigo R, Araya J, Poniachik J. Insulin resistance and oxidative stress interdependency in non-alcoholic fatty liver disease. *Trends in Molecular Medicine*. 2006;**12**(12):555-558
- [92] Hennig EE, Mikula M, Goryca K, Paziewska A, Ledwon J, Nesteruk M, et al. Extracellular matrix and cytochrome P450 gene expression can distinguish steatohepatitis from steatosis in mice. *Journal of Cellular and Molecular Medicine*. 2014;**18**(9):1762-1772
- [93] Valenzuela R, Videla LA. The importance of the long-chain polyunsaturated fatty acid n-6/n-3 ratio in development of non-alcoholic fatty liver associated with obesity. *Food & Function*. 2011;**2**(11):644-648
- [94] Videla LA, Rodrigo R, Araya J, Poniachik J. Oxidative stress and depletion of hepatic long-chain polyunsaturated fatty acids may contribute to nonalcoholic fatty liver disease. *Free Radical Biology & Medicine*. 2004;**37**(9):1499-1507
- [95] Najt CP, Senthivinayagam S, Aljazi MB, Fader KA, Olenic SD, Brock JR, et al. Liver-specific loss of perilipin 2 alleviates diet-induced hepatic steatosis, inflammation, and fibrosis. *American Journal of Physiology. Gastrointestinal and Liver Physiology*. 2016;**310**(9):G726-G738
- [96] Zheng P, Xie Z, Yuan Y, Sui W, Wang C, Gao X, et al. Plin5 alleviates myocardial ischaemia/reperfusion injury by reducing oxidative stress through inhibiting the lipolysis of lipid droplets. *Scientific Reports*. 2017;**7**:42574
- [97] Zechner R, Kienesberger PC, Haemmerle G, Zimmermann R, Lass A. Adipose triglyceride lipase and the lipolytic catabolism of cellular fat stores. *Journal of Lipid Research*. 2009;**50**(1):3-21
- [98] Yamaguchi T, Omatsu N, Morimoto E, Nakashima H, Ueno K, Tanaka T, et al. CGI-58 facilitates lipolysis on lipid droplets but is not involved in the vesiculation of lipid droplets caused by hormonal stimulation. *Journal of Lipid Research*. 2007;**48**(5):1078-1089
- [99] Dalen KT, Ulven SM, Arntsen BM, Solaas K, Nebb HI. PPARalpha activators and fasting induce the expression of adipose differentiation-related protein in liver. *Journal of Lipid Research*. 2006;**47**(5):931-943
- [100] Mishra R, Emancipator SN, Miller C, Kern T, Simonson MS. Adipose differentiation-related protein and regulators of lipid homeostasis identified by gene expression profiling in the murine db/db diabetic kidney. *American Journal of Physiology. Renal Physiology*. 2004;**286**(5):F913-F921
- [101] Suzuki K, Takahashi K, Nishimaki-Mogami T, Kagechika H, Yamamoto M, Itabe H. Docosahexaenoic acid induces adipose differentiation-related protein through activation of retinoid x receptor in human choriocarcinoma BeWo cells. *Biological & Pharmaceutical Bulletin*. 2009;**32**(7):1177-1182

- [102] Rankin EB, Rha J, Selak MA, Unger TL, Keith B, Liu Q, et al. Hypoxia-inducible factor 2 regulates hepatic lipid metabolism. *Molecular and Cellular Biology*. 2009;**29**(16): 4527-4538
- [103] Bindesboll C, Berg O, Arntsen B, Nebb HI, Dalen KT. Fatty acids regulate perilipin5 in muscle by activating PPARdelta. *Journal of Lipid Research*. 2013;**54**(7):1949-1963
- [104] Granneman JG, Moore HP, Mottillo EP, Zhu Z. Functional interactions between Mldp (LSDP5) and Abhd5 in the control of intracellular lipid accumulation. *The Journal of Biological Chemistry*. 2009;**284**(5):3049-3057
- [105] Huang Y, He S, Li JZ, Seo YK, Osborne TF, Cohen JC, et al. A feed-forward loop amplifies nutritional regulation of PNPLA3. *Proceedings of the National Academy of Sciences of the United States of America*. 2010;**107**(17):7892-7897
- [106] Sathyanarayan A, Mashek MT, Mashek DG. ATGL promotes autophagy/lipophagy via SIRT1 to control hepatic lipid droplet catabolism. *Cell Reports*. 2017;**19**(1):1-9
- [107] Cai H, Yao W, Li L, Li X, Hu L, Mai R, et al. Cell-death-inducing DFFA-like effector B contributes to the assembly of hepatitis C virus (HCV) particles and interacts with HCV NS5A. *Scientific Reports*. 2016;**6**:27778
- [108] Chang BH, Li L, Saha P, Chan L. Absence of adipose differentiation related protein upregulates hepatic VLDL secretion, relieves hepatosteatosis, and improves whole body insulin resistance in leptin-deficient mice. *Journal of Lipid Research*. 2010;**51**(8):2132-2142
- [109] Chang BH, Li L, Paul A, Taniguchi S, Nannegari V, Heird WC, et al. Protection against fatty liver but normal adipogenesis in mice lacking adipose differentiation-related protein. *Molecular and Cellular Biology*. 2006;**26**(3):1063-1076
- [110] Zhou L, Park SY, Xu L, Xia X, Ye J, Su L, et al. Insulin resistance and white adipose tissue inflammation are uncoupled in energetically challenged Fsp27-deficient mice. *Nature Communications*. 2015;**6**:5949
- [111] Langhi C, Arias N, Rajamoorthi A, Basta J, Lee RG, Baldan A. Therapeutic silencing of fat-specific protein 27 improves glycemic control in mouse models of obesity and insulin resistance. *Journal of Lipid Research*. 2017;**58**(1):81-91
- [112] Liu L, Jiang Q, Wang X, Zhang Y, Lin RC, Lam SM, et al. Adipose-specific knockout of SEIPIN/BSCL2 results in progressive lipodystrophy. *Diabetes*. 2014;**63**(7):2320-2331
- [113] Cui X, Wang Y, Meng L, Fei W, Deng J, Xu G, et al. Overexpression of a short human seipin/BSCL2 isoform in mouse adipose tissue results in mild lipodystrophy. *American Journal of Physiology. Endocrinology and Metabolism*. 2012;**302**(6):E705-E713

