

We are IntechOpen, the world's leading publisher of Open Access books Built by scientists, for scientists

6,900

Open access books available

185,000

International authors and editors

200M

Downloads

Our authors are among the

154

Countries delivered to

TOP 1%

most cited scientists

12.2%

Contributors from top 500 universities



WEB OF SCIENCE™

Selection of our books indexed in the Book Citation Index
in Web of Science™ Core Collection (BKCI)

Interested in publishing with us?
Contact book.department@intechopen.com

Numbers displayed above are based on latest data collected.
For more information visit www.intechopen.com



Using the Structural Kinome to Systematize Kinase Drug Discovery

Zheng Zhao and Philip E. Bourne

Abstract

Kinase-targeted drug design is challenging. It requires designing inhibitors that can bind to specific kinases, when all kinase catalytic domains share a common folding scaffold that binds ATP. Thus, obtaining the desired selectivity, given the whole human kinome, is a fundamental task during early-stage drug discovery. This begins with deciphering the kinase-ligand characteristics, analyzing the structure–activity relationships and prioritizing the desired drug molecules across the whole kinome. Currently, there are more than 300 kinases with released PDB structures, which provides a substantial structural basis to gain these necessary insights. Here, we review *in silico* structure-based methods – notably, a function-site interaction fingerprint approach used in exploring the complete human kinome. *In silico* methods can be explored synergistically with multiple cell-based or protein-based assay platforms such as KINOMEScan. We conclude with new drug discovery opportunities associated with kinase signaling networks and using machine/deep learning techniques broadly referred to as structural biomedical data science.

Keywords: kinase inhibitor, structural kinome, cysteinome, drug design and discovery, drug resistance, protein-ligand interaction fingerprint

1. Introduction

A kinase is an enzyme that catalyzes the transfer of the gamma-phosphate group of ATP to a specific substrate [1, 2]. The human kinome comprises 538 known kinases, and these play an important role in the signal transduction and regulation of cellular functions, such as cell proliferation and necrosis [3, 4]. Correspondingly, dysfunctional kinases are associated with a variety of diseased conditions, such as cancer, inflammatory disease, cardiovascular disease, neurodegenerative disease, and metabolic disease [5, 6]. Therefore, kinases represent important therapeutic targets to overcome these diseases [7] and have become one of the most potentially impactful target families [8–10]. Since the first kinase-targeted drug, imatinib [11], was approved by the US Food and Drug Administration (FDA) in 2001, a significant breakthrough in kinase drug design for cancer treatment [12], 63 small molecule kinase inhibitors have been approved by the FDA [13, 14] as of Feb. 12, 2021. These drugs provide a variety of disease treatments, such as for non-small cell lung cancer (NSCLC) [15], chronic myelogenous leukemia (CML) [16], rheumatoid arthritis [17], breast cancer [18], and acute lymphoblastic leukemia (ALL) [19]. However, in

practice, the off-target toxicities and other adverse effects, such as congestive heart failure and cardiogenic shock in some CML patients [20], require the further development of more effective, highly selective inhibitors [3].

Attaining such high selectivity is a daunting task since the inhibitor should bind to a specific primary kinase or selected kinases, yet all kinase catalytic domains share a common folding scaffold that binds ATP [21]. To validate selectivity, kinome-scale screening of lead compounds has been attracting more attention [22, 23]. Indeed, there are a number of experimental kinome-scale screening methods [22, 24], such as KinaseProfiler [25], KINOMEScan [26], and KiNativ [27]. Although kinase profiling technologies are gradually maturing, they are expensive, especially for screening a large compound library against the whole kinome, which remains impractical.

With the availability of an increasing number of kinase structures, virtual structure-based drug screening provides a low-cost and effective way to filter a large compound library and identify the most likely compounds at an early stage of drug screening. Used concurrently with experiential profiling platforms, *in silico* methods provide early-stage kinome-scale drug screening. Based on structural insights, the atom-level binding characteristics of every compound can be revealed and can be used as a guideline for further compound identification and optimization. Given the more than 300 kinases with released PDB structures, subtle differences have been found in the vicinity of the binding site where the adenine base of ATP binds, as well as binding sites away from the ATP binding site, such as in the C lobe of the kinase domain [28, 29]. This structural corpora provides insights toward achieving the desired selectivity.

In this chapter we describe the characterization of the whole structure kinome to facilitate drug development. Specifically, we use the function-site fingerprint method to analyze the structural kinome providing systematic insights into kinase drug discovery. With increased knowledge of kinase-driven signaling pathways new kinase targets are continuously being explored for related disease treatment. Looking ahead to structural biomedical data science, combining structure-based polypharmacology with machine/deep learning new challenges and opportunities are discussed.

2. Kinome-level profiling

Due to the common ATP-binding pocket, the kinase domain was thought to be undruggable prior to the 1990s [30]. With advances in protein- and cell-level experimental techniques and an increase in structure-based knowledge of protein kinases, variation among different kinases became apparent [31]. However, possible specificity requires kinome-scale validation. Moreover, with the increased knowledge of kinase signal pathways, traditional “one-drug-one-target” models have been replaced by the acceptance of polypharmacology. Examples include the FDA-approved drug Crizotinib targeting ALK and Met for treating NSCLC, and Cabozantinib targeting VEGFR, MET, RET, FLT1/3/4, AXL, and TIE2 for treating thyroid cancer. Hence, kinome-level profiling is an important step in confirming the selectivity of multi-target drugs.

Multiple commercial platforms provide kinome profiling services with panels ranging from 30 to 715 kinases (**Table 1**) [1, 32, 33].

Apart from revealing off-targets, profiling inhibitors offers new opportunities for drug discovery [23, 34–39]. Through profiling, the target spectrum reveals the compound’s selectivity based on the coverage of kinases it hits, including unexpected off-target interactions, which is a cost-effective way of jumpstarting new kinase drug

Providers	Technologies	Kinases	Results	Websites
Reaction biology	HotSpot™ 33PanQinase™	715	IC ₅₀	https://www.reactionbiology.com
DiscoverRx	KinomeScan	489	Kd/ IC ₅₀	https://www.discoverrx.com
Thermo Fisher Scientific	Z'-LYTE Adapta	>485	IC ₅₀ / EC50	https://www.thermofisher.com
Eurofins Discovery	KinaseProfiler™	>420	IC ₅₀	https://www.eurofinsdiscoveryservices.com
Luceome Biotechnologies	KinaseSeeker™ KinaseLite™	409	IC ₅₀	https://www.luceome.com
ActivX Biosciences	KiNativ™	>400	Kd/ IC ₅₀	https://www.kinativ.com

Table 1.
Commercial kinase profiling service providers as of Feb. 28, 2021, based on the provider's webpages.

discovery [40]. For example, Druker et al. utilized an *in vitro* profiling panel of 30 kinases to establish the selectivity of imatinib in 1996 [16]. Later scientists revisited the successful drug using a larger profiling panel and found that imatinib has multiple off-targets in the human kinome. By utilizing the off-target interactions, imatinib can be repurposed for other diseases. Indeed, in 2008 the FDA approved imatinib as an adjuvant treatment to CD117-positive gastrointestinal stromal tumors (GIST) in adult patients [41, 42].

3. Structural kinome

Profiling the whole human kinome as a routine procedure can validate the selectivity of any given compound by comparing the binding affinities, such as IC₅₀ or Kd [10, 43]. Subsequently optimizing the compound toward the desired selectivity is the next critical step in early-stage drug discovery. This often begins with deciphering the kinase-ligand characteristics and analyzing the structure–activity relationships, such as confirming which part of the binding sites is nucleophilic/electrophilic, which sub-pocket is hydrophobic, or which amino acids can provide covalent interactions. These atom-level interaction details provide the basic principles by which to modify the functional groups of the given compound. Iteratively combining compound optimization with kinome profiling establishes lead compounds for further testing.

As of Feb. 2021, there are 304 kinases associated with 5208 PDB structures covering all kinase groups, i.e., AGC (276 structures), Atypical (255 structures), CAMK (587 structures), CK1 (82 structures), CMGC (1428 structures), STE (296 structures), TK (1447 structures), TKL (335 structures), and other (493 structures) [44, 45]. The 3-D kinase structure corpus provides a basis for structural kinome-based drug discovery. Scientists can not only directly review the compound binding details against the specific target, but they can also compare nuances -similarities and differences - among different kinase targets. For example, in comparing the ATP binding mode, 63 FDA-approved small-molecule kinase drugs can be divided into Type-I, II, III, or IV inhibitors [29, 46]. Similarly, based on the possible existence of a covalent interactions, these kinase drugs can be divided into covalent (irreversible) inhibitors and noncovalent (reversible) inhibitors (**Table 2**) [47, 48]. Overall, the desired selectivity

Drug	Type	Mode	PDB ID	Drug	Type	Mode	PDB ID
Imatinib	II	Reversible	1OPJ	Brigatinib	I	Reversible	5J7H
Gefitinib	I	Reversible	4I22	Midostaurin	I	Reversible	4NCT
Erlotinib	I	Reversible	4HJO	Neratinib	I	Irreversible	2JIV
Sorafenib	II	Reversible	4ASD	Abemaciclib	I	Reversible	5L2S
Sunitinib	I	Reversible	2Y7J	Copanlisib	I	Reversible	5G2N
Dasatinib	I	Reversible	3QLG	Acalabrutinib	I	Irreversible	—
Lapatinib	I	Reversible	1XKK	Netarsudil	I	Reversible	—
Nilotinib	II	Reversible	3GP0	Fostamatinib	I	Reversible	3FQS
Pazopanib	I	Reversible	—	Baricitinib	I	Reversible	4W9X
Vandetanib	I	Reversible	2IVU	Binimetinib	III	Reversible	6V2X
Crizotinib	I	Reversible	3ZBF	Encorafenib	I	Reversible	—
Vemurafenib	I	Reversible	3OG7	Dacomitinib	I	Irreversible	4I24
Ruxolitinib	I	Reversible	4U5J	Gilteritinib	I	Reversible	7AB1
Axitinib	I	Reversible	4AGC	Larotrectinib	I	Reversible	—
Bosutinib	I	Reversible	4OTW	Lorlatinib	I	Reversible	5A9U
Regorafenib	II	Reversible	—	Entrectinib	I	Reversible	5FTO
Tofacitinib	I	Reversible	3LXN	Erdafitinib	I	Reversible	5EW8
Cabozantinib	II	Reversible	—	Fedratinib	I	Reversible	6VNE
Ponatinib	II	Reversible	4C8B	Pexidartinib	II	Reversible	4R7H
Trametinib	III	Reversible	7JUR	Upadacitinib	I	Reversible	—
Dabrafenib	I	Reversible	4XV2	Zanubrutinib	I	Irreversible	6J6M
Afatinib	I	Irreversible	4G5J	Pemigatinib	I	Rreversible	—
Ibrutinib	I	Irreversible	5P9I	Pralsetinib	I	Rreversible	7JU5
Ceritinib	I	Reversible	4MKC	Ripretinib	II	Reversible	6MOB
Idelalisib	I	Reversible	4XE0	Selpercatinib	I	Rreversible	7JU6
Nintedanib	I	Reversible	3C7Q	Selumetinib	III	Reversible	4U7Z
Palbociclib	I	Reversible	2EUF	Tucatinib	I	Rreversible	—
Lenvatinib	I	Reversible	3WZD	Avapritinib	I	Rreversible	—
Cobimetinib	III	Reversible	4AN2	Capmatinib	I	Rreversible	5EOB
Osimertinib	I	Irreversible	4ZAU	Tepotinib	I	Rreversible	4R1V
Alectinib	I	Reversible	5XV7	Trilaciclib	I	Rreversible	—
Ribociclib	I	Reversible	5L2T				

Table 2.
63 FDA-approved kinase small molecule drugs as of Feb. 12, 2021. Columns 2–4 show that the inhibitor types (column 2), covalent interaction modes (column 3), and PDB IDs if the drug-bound structure is available in the PDB (column 4; “-” means the drug-bound PDB structure is unavailable).

is achieved by utilizing every nuance of the different binding sites and accommodating the different sub-pockets of the binding sites among the different kinases [13, 46, 49]. As such, deciphering the whole structural kinome will be very useful in enhancing kinase inhibitor screening, optimization, and prediction. To this end, we introduce the alignment of the binding sites across the structural kinome and describe the characteristics of the aligned binding sites for achieving the desired selectivity.

Zhao et al. developed a function-site interaction fingerprint (FsIFP) approach to align and delineate the structural human kinome [29]. The FsIFP approach describes protein–ligand interaction characteristics at the functional site using 1D fingerprints [50], which can be compared and contrasted. The approach consists of three steps (**Figure 1**). First, preparing the structural kinome database. All the released

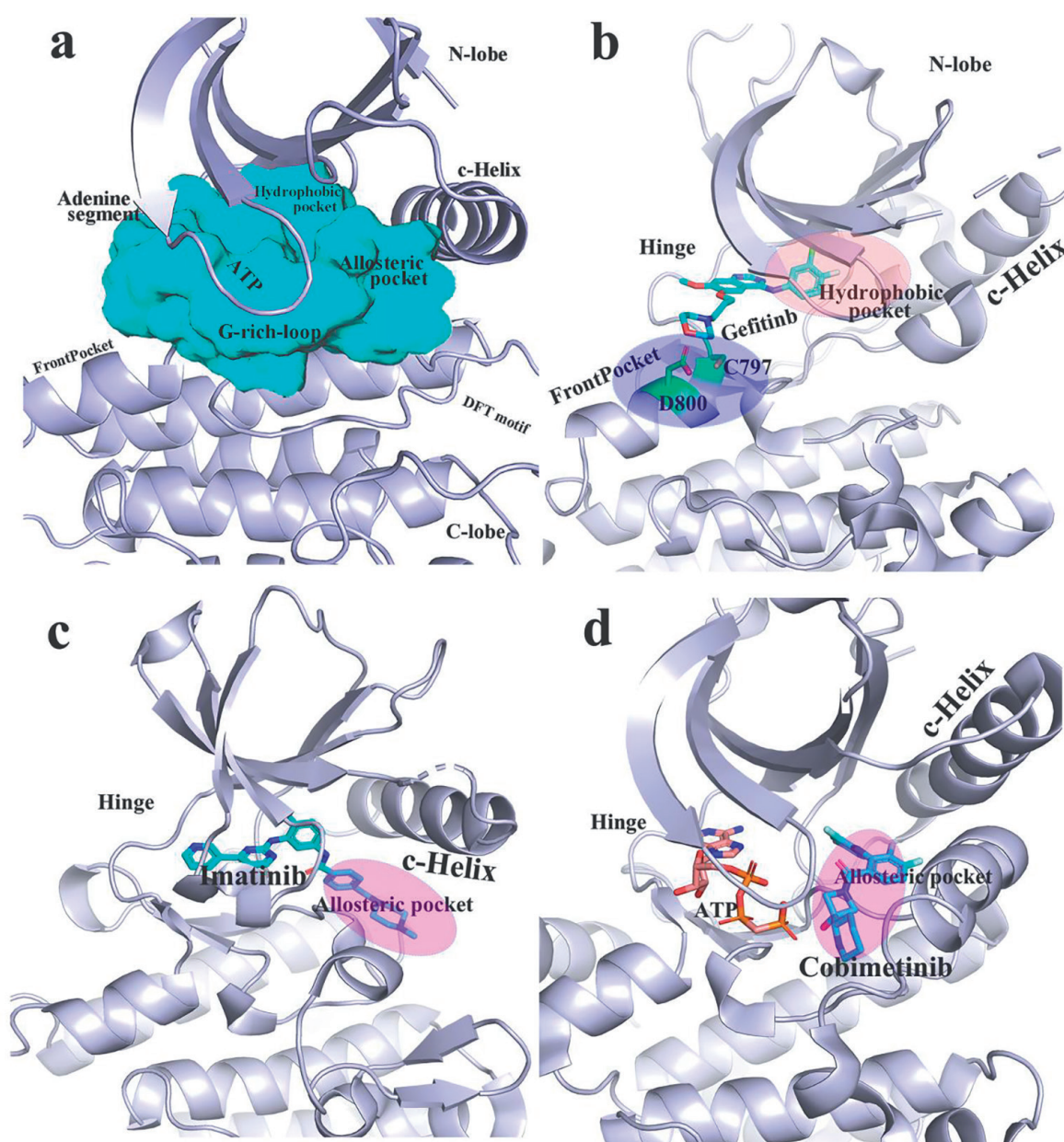


Figure 1.
 (a) Kinase binding site surrounding the ATP binding cavity (PDB ID: 1 m17 as the template). (b). The occupied binding pocket of a type-I kinase inhibitor (PDB ID: 4i22). (c) the binding characteristics of a type-II kinase inhibitor (PDB ID: 2hyy); (d) the binding characteristics of a type-III kinase inhibitor (PDB ID: 4an2).

PDB structures can be directly downloaded based on keyword search or the kinase enzyme index [44]. Additionally, there are a few kinase-specific webpages such as UniProt (<https://www.uniprot.org/docs/pkinfam>), KLIFS [45] (<https://klifs.net/>), and the kinase sarfari <https://chembl.gitbook.io/chembl-interface-documentation/legacy-resources#kinase-sarfari>). Second, aligning the binding sites. The SMAP software [51], one sequence-independent binding site comparison tool, was applied to compare all of the binding sites. Third, encoding the interaction fingerprint. Given any protein-ligand complex, every involved residue comprising the functional site is converted into a fingerprint string by using the predefined standards [52] for different residue-ligand nonbinding interactions such as van der Waals, aromatic stacking interactions, hydrogen-bond interactions, and electrostatic interactions [53]. Currently, there are a few open-source tools available, such as IChem [54] and PyPlif [55] that provide these data. The function-site interaction fingerprints are obtained by combining the aligned binding sites with the encoded interaction fingerprints. So far, the FsIFP strategy has been successfully applied to a number of different drug design and discovery projects [15, 56–58].

The FsIFP approach, which examines the specificity among binding sites has been explored to design high-selectivity kinase inhibitors. Beyond the ATP binding pocket, there are other binding subpockets to be validated [59], such as hydrophobic segment, allosteric segment, DFG motif area, and G-rich-loop region (**Figure 1a**). Corresponding to these binding regions, inhibitors are classified as Type-I, Type-II, and Type-III.

Type-I kinase inhibitors mainly bind to the ATP-binding site in the “DFG-in” conformation. To obtain stronger binding affinity and greater selectivity than ATP, besides occupying the ATP-binding space, Type-I inhibitors extend into different proximal regions, specifically referred to as the front pocket region, the hydrophobic pocket region, the DFG motif, or the G-rich-loop region [13, 59]. For example, Gefitinib is one Type-I drug for the treatment of non-small cell lung cancer (NSCLC) [60]. Its quinazoline scaffold forms hydrogen bonds with the hinge region like the adenine moiety of ATP (**Figure 1b**). More importantly, the 3-chloro-4-fluorophenyl fragment of Gefitinib extends into the hydrophobic pocket, and the morpholine derivative binds at the front pocket and forms polar interactions with residues Cys797 and Asp800 (**Figure 1b**) [61]. In contrast, Type-II kinase inhibitor typically bind in the “DFG-out” conformation. Type-II kinase inhibitors extend into the allosteric pocket region beyond the ATP binding pocket. For example, Imatinib is a Type-II inhibitor to treat positive acute lymphoblastic leukemia (Ph + ALL) in children. Like Type-I inhibitors, there is a scaffold fragment (**Figure 1c**) occupying the space where the adenine moiety of ATP binds. At the same time, the 4-(4-Methyl-piperazin-1-ylmethyl) benzamide extends into the allosteric pocket. Type-III inhibitors occupy the allosteric pocket (**Figure 1d**), which is not so well conserved that attractive for designing non-ATP competitive kinase inhibitors. Fingerprints established through aligned structures provide detailed information on the binding sites occupied by Type- I, II, and III kinase inhibitors.

The other noteworthy aspect is the difference in amino acids at the same spatial position among the aligned binding sites, which is useful in obtaining the desired selectivity. Typically, structural kinome-guided studies have shown that there are a number of cysteine residues distributed around the binding sites [1, 21, 62, 63]. In Zhang et al.’s review, they identified over 200 kinases bearing at least one cysteine in and around the ATP binding pocket, thus highlighting the broad structural basis to improve the selectivity and binding affinity by covalently utilizing these

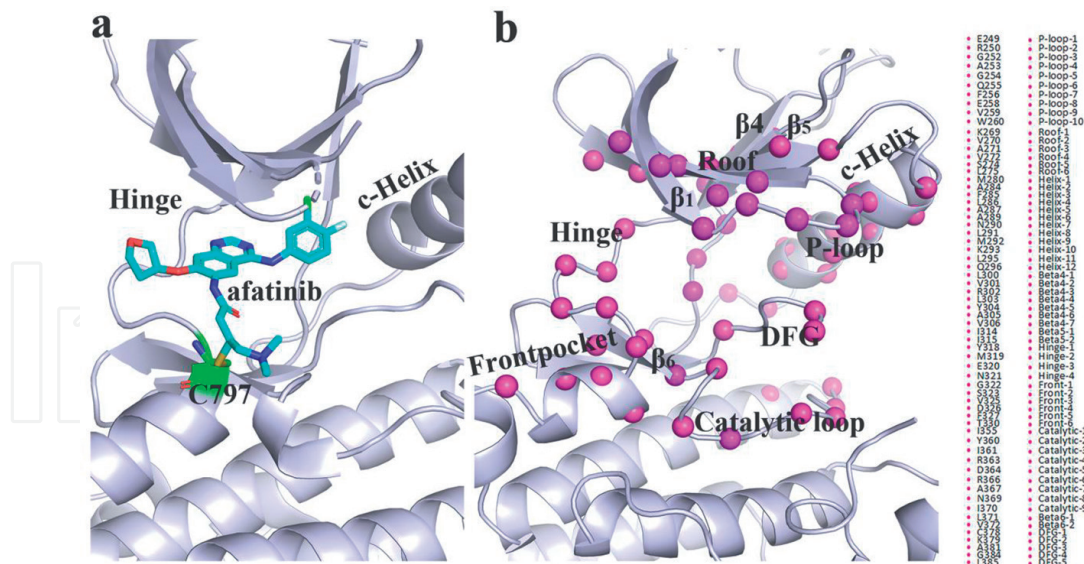


Figure 2.
(a) Covalent binding mode of Afatinib (PDB id: 4gsj). (b). 63 positions bearing the accessible cysteines (PDB id: 3byu). The legend shows the amino acids and the corresponding spatial positions (purple balls).

non-catalytic cysteines [21]. Currently, 7 covalent kinase inhibitors have been approved (**Table 2**). This class of inhibitors not only bind to the ATP binding pocket, but also hit nearby cysteine to form covalent interaction; Afatinib (**Figure 2a**) being one example through binding to Cys797. Similarly, the other 6 inhibitors all form covalent bonds with the corresponding cysteines located in the front pocket. Like Afatinib, Osimertinib, Dacomitinib, and Neratinib all have covalent interaction with Cys797 in the EGFR crystal structure (**Figure 2a**). Ibrutinib, Acalabrutinib, and Zanubrutinib all form covalent interactions with Cys481, targeting BTK. In their study, Zhao et al [63] identified 63 different amino acid locations bearing accessible cysteines through surveying the whole structural kinome (**Figure 2b**), speaking to the broad applicability of designing covalent kinase inhibitors.

4. Challenges and opportunities

Since the launch of the first kinase drug, Imatinib in 2001, kinase targeted drug discovery has been on a fast track. In the last six years, an average of eight small molecule kinase drugs have been approved per year. This tremendous success benefits patients, but also highlights our ability to achieve drug discovery outcomes [9, 64]. However, challenges still remain in the development of efficient, non-toxic kinase-targeted drugs [3].

Clinical adverse effects are one major challenge. For example, kinase drugs affect the digestive system and cause nausea, vomiting, and/or diarrhoea [65]. Further, most kinase inhibitors cause serious adverse effects, such as different degrees of cytopenia [66]. These side effects typically result from off-targets effects. To avoid such side effects, a highly selective drug is desired. Alternatively, adverse effect can be due to on-target toxicities involving the intrinsic mechanisms of the drugs [67]. At this point in the evolution of small molecule kinase drugs, novel compound scaffolds are needed to reduce adverse effect as much as possible. Maximizing the diversity of molecular scaffolds is critically important for extracting the novel compound early on. The increasing availability of panels of phenotypic assays may provide one strategy to

profile selectivity by combining virtual structure-based kinome screening, which can filter a huge compound library into a highly focused kinase library [68].

Another challenge is acquired drug resistance [58, 69]. In clinical practice, kinase-targeted drugs are frequently subject to drug resistance, which has become a primary vulnerability in targeted cancer therapy. The first difficulty is exploring resistance mechanisms due to the diversity of specific drug-binding mechanisms. For example, drug resistance of Erlotinib, which is one FDA-approved kinase drug used to treat patients with EGFR-overexpression induced NSCLC, is caused by the gatekeeper T790M mutation, which increases the binding affinity of ATP to the EGFR kinase [70]. In another example, Crizotinib was often found to be ineffective in the majority of patients after 1–2 years’ treatment against ALK-positive NSCLC due to the acquired ALK L1196M mutation, which decreased the binding affinity of Crizotinib [71].

Nevertheless, these challenges also provide unique opportunities to develop new approaches and applications. Currently, in vitro and/or in vivo kinome-scale and proteome-scale profiling methodologies have been merged into the drug design pipeline, which potentially provides a thorough understanding of targets and selectivity of kinase inhibitors. Combined with the diseases’ signal pathway, the target spectrum can be further applied to “one-drug-multiple-target” drug design. For example, Midostaurin is a multi-target kinase drug [72] used to treat adult patients with newly diagnosed FLT3-mutated acute myeloid leukemia (AML). For a “multiple-drug-multiple-target” combination therapy strategy, Capmatinib (a MET inhibitor) and Gefitinib (an EGFR inhibitor) had been approved to treat patients with EGFR-mutated-MET-dysregulated – in particular, MET-amplified - NSCLC [73]. We can expect profiling methodologies will be further developed to cover the whole kinome and even the proteome.

In virtual drug design and discovery, the incorporation of machine/deep learning and structural biomedical data science are advancing compound screening, target validation, and selectivity improvement [74]. Currently, data science has become one of the fastest-growing disciplines and deep learning has been applied to drug synthesis, design, and prediction [75–77]. Moreover, there are a large number of kinase assay databases available. For example, a database from Merck, KGaA, with over 1.0 million data points (i.e., 4,712 compounds x 220 kinases). Merget et al. used it to train one virtual profiling assay model to support virtual screening, compound repurposing, and the detection of potential off-targets [37]. Here, we collate the free databases of available kinase-inhibitor activity (**Table 3**). It is worth noting that the ChEMBL

Provider	Technology	Coverage	Resource website
Reaction biology	HotSpot™	300 Kinases x 178 Inhibitors	www.guidetopharmacology.org
ChEMBL Kinase SARfari	Collected from academic publications	~530,000 data points	www.ebi.ac.uk/chembl
Eurofins Discovery	KinaseProfiler™	234 Kinases x 158 Inhibitors	www.guidetopharmacology.org
DiscoverRx	KinomeScan	~440 Kinases x 182 Inhibitors	lincs.hms.harvard.edu
ActivX Biosciences	KiNativ™	(194 to 316) Kinases x 30 Inhibitors	lincs.hms.harvard.edu

Table 3.
Kinase-inhibitor interaction activity data resource.

Kinase SARfari database, which contains ~54,000 compounds, ~980 kinases targets, and the corresponding approximately 530 K structure–activity data points [78], has been used to predict kinome-wide profiling of small molecules [79–81]. Taken together, data-driven methods and applications will further experimental protocols and facilitate the drug discovery processes.

IntechOpen

IntechOpen


Author details

Zheng Zhao and Philip E. Bourne*

Department of Biomedical Engineering, School of Data Science, University of Virginia, Charlottesville, Virginia, United States of America

*Address all correspondence to: peb6a@virginia.edu

IntechOpen

© 2021 The Author(s). Licensee IntechOpen. This chapter is distributed under the terms of the Creative Commons Attribution License (<http://creativecommons.org/licenses/by/3.0>), which permits unrestricted use, distribution, and reproduction in any medium, provided the original work is properly cited. 

References

- [1] Liu, Q.; Sabnis, Y.; Zhao, Z.; Zhang, T.; Buhrlage, S. J.; Jones, L. H.; Gray, N. S., Developing irreversible inhibitors of the protein kinase cysteinome. *Chem Biol* **2013**, *20* (2), 146-159.
- [2] Fleuren, E. D.; Zhang, L.; Wu, J.; Daly, R. J., The kinome 'at large' in cancer. *Nat Rev Cancer* **2016**, *16* (2), 83-98.
- [3] Gharwan, H.; Groninger, H., Kinase inhibitors and monoclonal antibodies in oncology: clinical implications. *Nat Rev Clin Oncol* **2016**, *13* (4), 209-227.
- [4] Santos, R.; Ursu, O.; Gaulton, A.; Bento, A. P.; Donadi, R. S.; Bologa, C. G.; Karlsson, A.; Al-Lazikani, B.; Hersey, A.; Oprea, T. I.; Overington, J. P., A comprehensive map of molecular drug targets. *Nat Rev Drug Discov* **2017**, *16* (1), 19-34.
- [5] Lahiry, P.; Torkamani, A.; Schork, N. J.; Hegele, R. A., Kinase mutations in human disease: interpreting genotype-phenotype relationships. *Nat Rev Genet* **2010**, *11* (1), 60-74.
- [6] Vogelstein, B.; Papadopoulos, N.; Velculescu, V. E.; Zhou, S.; Diaz, L. A., Jr.; Kinzler, K. W., Cancer genome landscapes. *Science* **2013**, *339* (6127), 1546-1558.
- [7] Bhullar, K. S.; Lagaron, N. O.; McGowan, E. M.; Parmar, I.; Jha, A.; Hubbard, B. P.; Rupasinghe, H. P. V., Kinase-targeted cancer therapies: progress, challenges and future directions. *Mol Cancer* **2018**, *17* (1), 48.
- [8] Fabbro, D., 25 years of small molecular weight kinase inhibitors: potentials and limitations. *Mol Pharmacol* **2015**, *87* (5), 766-775.
- [9] Ferguson, F. M.; Gray, N. S., Kinase inhibitors: the road ahead. *Nat Rev Drug Discov* **2018**, *17* (5), 353-377.
- [10] Wilson, L. J.; Linley, A.; Hammond, D. E.; Hood, F. E.; Coulson, J. M.; MacEwan, D. J.; Ross, S. J.; Slupsky, J. R.; Smith, P. D.; Evers, P. A.; Prior, I. A., New Perspectives, Opportunities, and Challenges in Exploring the Human Protein Kinome. *Cancer Res* **2018**, *78* (1), 15-29.
- [11] Druker, B. J.; Talpaz, M.; Resta, D. J.; Peng, B.; Buchdunger, E.; Ford, J. M.; Lydon, N. B.; Kantarjian, H.; Capdeville, R.; Ohno-Jones, S.; Sawyers, C. L., Efficacy and safety of a specific inhibitor of the BCR-ABL tyrosine kinase in chronic myeloid leukemia. *N Engl J Med* **2001**, *344* (14), 1031-1037.
- [12] Druker, B. J.; Guilhot, F.; O'Brien, S. G.; Gathmann, I.; Kantarjian, H.; Gattermann, N.; Deininger, M. W.; Silver, R. T.; Goldman, J. M.; Stone, R. M.; Cervantes, F.; Hochhaus, A.; Powell, B. L.; Gabilove, J. L.; Rousselot, P.; Reiffers, J.; Cornelissen, J. J.; Hughes, T.; Agis, H.; Fischer, T.; Verhoef, G.; Shepherd, J.; Saglio, G.; Gratwohl, A.; Nielsen, J. L.; Radich, J. P.; Simonsson, B.; Taylor, K.; Baccarani, M.; So, C.; Letvak, L.; Larson, R. A.; Investigators, I., Five-year follow-up of patients receiving imatinib for chronic myeloid leukemia. *N Engl J Med* **2006**, *355* (23), 2408-17.
- [13] Zhao, Z.; Bourne, P. E., Overview of Current Type I/II Kinase Inhibitors. In *Next Generation Kinase Inhibitors*, 2020; pp 13-28.
- [14] Roskoski, R., Jr., Properties of FDA-approved small molecule protein kinase inhibitors: A 2020 update. *Pharmacol Res* **2020**, *152*, 104609.

- [15] Zhao, Z.; Xie, L.; Bourne, P. E., Structural Insights into Characterizing Binding Sites in Epidermal Growth Factor Receptor Kinase Mutants. *J Chem Inf Model* **2019**, 59 (1), 453-462.
- [16] Druker, B. J.; Tamura, S.; Buchdunger, E.; Ohno, S.; Segal, G. M.; Fanning, S.; Zimmermann, J.; Lydon, N. B., Effects of a selective inhibitor of the Abl tyrosine kinase on the growth of Bcr-Abl positive cells. *Nat Med* **1996**, 2 (5), 561-566.
- [17] Harrington, R.; Al Nokhatha, S. A.; Conway, R., JAK Inhibitors in Rheumatoid Arthritis: An Evidence-Based Review on the Emerging Clinical Data. *J Inflamm Res* **2020**, 13, 519-531.
- [18] Wilcock, P.; Webster, R. M., The breast cancer drug market. *Nat Rev Drug Discov* **2021**.
- [19] Hirschbuhl, K.; Labopin, M.; Houhou, M.; Gabellier, L.; Labussiere-Wallet, H.; Lioure, B.; Beelen, D.; Cornelissen, J.; Wulf, G.; Jindra, P.; Tilly, H.; Passweg, J.; Niittyvuopio, R.; Bug, G.; Schmid, C.; Nagler, A.; Giebel, S.; Mohty, M., Second- and third-generation tyrosine kinase inhibitors for Philadelphia-positive adult acute lymphoblastic leukemia relapsing post allogeneic stem cell transplantation-a registry study on behalf of the EBMT Acute Leukemia Working Party. *Bone Marrow Transplant* **2020**.
- [20] Food and Drug Administration. Gleevec (imatinib): full prescribing information. Drugs@FDA, https://www.accessdata.fda.gov/drugsatfda_docs/label/2014/021588s040lbl.pdf. 2014.
- [21] Zhang, J.; Yang, P. L.; Gray, N. S., Targeting cancer with small molecule kinase inhibitors. *Nat Rev Cancer* **2009**, 9 (1), 28-39.
- [22] Wang, Y.; Ma, H., Protein kinase profiling assays: a technology review. *Drug Discov Today Technol* **2015**, 18, 1-8.
- [23] Klaeger, S.; Heinzlmeir, S.; Wilhelm, M.; Polzer, H.; Vick, B.; Koenig, P. A.; Reinecke, M.; Ruprecht, B.; Petzoldt, S.; Meng, C.; Zecha, J.; Reiter, K.; Qiao, H.; Helm, D.; Koch, H.; Schoof, M.; Canevari, G.; Casale, E.; Depaolini, S. R.; Feuchtinger, A.; Wu, Z.; Schmidt, T.; Rueckert, L.; Becker, W.; Huenges, J.; Garz, A. K.; Gohlke, B. O.; Zolg, D. P.; Kayser, G.; Vooder, T.; Preissner, R.; Hahne, H.; Tonisson, N.; Kramer, K.; Gotze, K.; Bassermann, F.; Schlegl, J.; Ehrlich, H. C.; Aiche, S.; Walch, A.; Greif, P. A.; Schneider, S.; Felder, E. R.; Ruland, J.; Medard, G.; Jeremias, I.; Spiekermann, K.; Kuster, B., The target landscape of clinical kinase drugs. *Science* **2017**, 358 (6367).
- [24] Wu, P.; Givskov, M.; Nielsen, T. E., Kinase Inhibitors. In *Drug Selectivity: An Evolving Concept in Medicinal Chemistry*, Handler, N.; Buschmann, H.; Mannhold, R.; Holenz, J., Eds. Wiley: 2017; pp 33-53.
- [25] Gao, Y.; Davies, S. P.; Augustin, M.; Woodward, A.; Patel, U. A.; Kovelman, R.; Harvey, K. J., A broad activity screen in support of a chemogenomic map for kinase signalling research and drug discovery. *Biochem J* **2013**, 451 (2), 313-328.
- [26] Karaman, M. W.; Herrgard, S.; Treiber, D. K.; Gallant, P.; Atteridge, C. E.; Campbell, B. T.; Chan, K. W.; Ciceri, P.; Davis, M. I.; Edeen, P. T.; Faraoni, R.; Floyd, M.; Hunt, J. P.; Lockhart, D. J.; Milanov, Z. V.; Morrison, M. J.; Pallares, G.; Patel, H. K.; Pritchard, S.; Wodicka, L. M.; Zarrinkar, P. P., A quantitative analysis of kinase inhibitor selectivity. *Nat Biotechnol* **2008**, 26 (1), 127-132.
- [27] Patricelli, M. P.; Szardenings, A. K.; Liyanage, M.; Nomanbhoy, T. K.;

- Wu, M.; Weissig, H.; Aban, A.; Chun, D.; Tanner, S.; Kozarich, J. W., Functional interrogation of the kinome using nucleotide acyl phosphates. *Biochemistry* **2007**, *46* (2), 350-358.
- [28] Muller, S.; Chaikuad, A.; Gray, N. S.; Knapp, S., The ins and outs of selective kinase inhibitor development. *Nat Chem Biol* **2015**, *11* (11), 818-821.
- [29] Zhao, Z.; Xie, L.; Xie, L.; Bourne, P. E., Delineation of Polypharmacology across the Human Structural Kinome Using a Functional Site Interaction Fingerprint Approach. *J Med Chem* **2016**, *59* (9), 4326-4341.
- [30] Crews, C. M., Targeting the undruggable proteome: the small molecules of my dreams. *Chem Biol* **2010**, *17* (6), 551-555.
- [31] Dang, C. V.; Reddy, E. P.; Shokat, K. M.; Soucek, L., Drugging the 'undruggable' cancer targets. *Nat Rev Cancer* **2017**, *17* (8), 502-508.
- [32] Bamborough, P., System-based drug discovery within the human kinome. *Expert Opin Drug Discov* **2012**, *7* (11), 1053-1070.
- [33] Wu, P.; Givskov, M.; Nielsen, T. E., Kinase Inhibitors. In *Drug Selectivity*, 2017; pp 31-53.
- [34] Bamborough, P.; Drewry, D.; Harper, G.; Smith, G. K.; Schneider, K., Assessment of chemical coverage of kinome space and its implications for kinase drug discovery. *J Med Chem* **2008**, *51* (24), 7898-7914.
- [35] Sutherland, J. J.; Gao, C.; Cahya, S.; Vieth, M., What general conclusions can we draw from kinase profiling data sets? *Biochim Biophys Acta* **2013**, *1834* (7), 1425-1433.
- [36] Jacoby, E.; Tresadern, G.; Bembenek, S.; Wroblowski, B.; Buyck, C.; Neefs, J. M.; Rassokhin, D.; Poncelet, A.; Hunt, J.; van Vlijmen, H., Extending kinome coverage by analysis of kinase inhibitor broad profiling data. *Drug Discov Today* **2015**, *20* (6), 652-658.
- [37] Merget, B.; Turk, S.; Eid, S.; Rippmann, F.; Fulle, S., Profiling Prediction of Kinase Inhibitors: Toward the Virtual Assay. *J Med Chem* **2017**, *60* (1), 474-485.
- [38] Bembenek, S. D.; Hirst, G.; Mirzadegan, T., Determination of a Focused Mini Kinase Panel for Early Identification of Selective Kinase Inhibitors. *J Chem Inf Model* **2018**, *58* (7), 1434-1440.
- [39] Wells, C. I.; Al-Ali, H.; Andrews, D. M.; Asquith, C. R. M.; Axtman, A. D.; Dikic, I.; Ebner, D.; Ettmayer, P.; Fischer, C.; Frederiksen, M.; Futrell, R. E.; Gray, N. S.; Hatch, S. B.; Knapp, S.; Lucking, U.; Michaelides, M.; Mills, C. E.; Muller, S.; Owen, D.; Picado, A.; Saikatendu, K. S.; Schroder, M.; Stolz, A.; Tellechea, M.; Turunen, B. J.; Vilar, S.; Wang, J.; Zuercher, W. J.; Willson, T. M.; Drewry, D. H., The Kinase Chemogenomic Set (KCGS): An Open Science Resource for Kinase Vulnerability Identification. *Int J Mol Sci* **2021**, *22* (2).
- [40] Goldstein, D. M.; Gray, N. S.; Zarrinkar, P. P., High-throughput kinase profiling as a platform for drug discovery. *Nat Rev Drug Discov* **2008**, *7* (5), 391-397.
- [41] Su, E. J.; Fredriksson, L.; Geyer, M.; Folestad, E.; Cale, J.; Andrae, J.; Gao, Y.; Pietras, K.; Mann, K.; Yepes, M.; Strickland, D. K.; Betsholtz, C.; Eriksson, U.; Lawrence, D. A., Activation of PDGF-CC by tissue plasminogen activator impairs blood-brain barrier

integrity during ischemic stroke. *Nat Med* **2008**, *14* (7), 731-737.

[42] Lopes, L. F.; Bacchi, C. E., Imatinib treatment for gastrointestinal stromal tumour (GIST). *J Cell Mol Med* **2010**, *14* (1-2), 42-50.

[43] Miduturu, C. V.; Deng, X.; Kwiatkowski, N.; Yang, W.; Brault, L.; Filippakopoulos, P.; Chung, E.; Yang, Q.; Schwaller, J.; Knapp, S.; King, R. W.; Lee, J. D.; Herrgard, S.; Zarrinkar, P.; Gray, N. S., High-throughput kinase profiling: a more efficient approach toward the discovery of new kinase inhibitors. *Chem Biol* **2011**, *18* (7), 868-879.

[44] Berman, H. M.; Westbrook, J.; Feng, Z.; Gilliland, G.; Bhat, T. N.; Weissig, H.; Shindyalov, I. N.; Bourne, P. E., The Protein Data Bank. *Nucleic Acids Res* **2000**, *28* (1), 235-242.

[45] Kanev, G. K.; de Graaf, C.; Westerman, B. A.; de Esch, I. J. P.; Kooistra, A. J., KLIFS: an overhaul after the first 5 years of supporting kinase research. *Nucleic Acids Res* **2021**, *49* (D1), D562-D569.

[46] Roskoski, R., Jr., Classification of small molecule protein kinase inhibitors based upon the structures of their drug-enzyme complexes. *Pharmacol Res* **2016**, *103*, 26-48.

[47] Zhao, Z.; Bourne, P. E., Progress with covalent small-molecule kinase inhibitors. *Drug Discov Today* **2018**, *23* (3), 727-735.

[48] Lu, W.; Kostic, M.; Zhang, T.; Che, J.; Patricelli, M. P.; Jones, L. H.; Chouchani, E. T.; Gray, N. S., Fragment-based covalent ligand discovery. *RSC Chemical Biology* **2021**.

[49] Zhao, Z.; Wu, H.; Wang, L.; Liu, Y.; Knapp, S.; Liu, Q.; Gray, N. S.,

Exploration of type II binding mode: A privileged approach for kinase inhibitor focused drug discovery? *ACS Chem Biol* **2014**, *9* (6), 1230-1241.

[50] Deng, Z.; Chuaqui, C.; Singh, J., Structural interaction fingerprint (SIFt): a novel method for analyzing three-dimensional protein-ligand binding interactions. *J Med Chem* **2004**, *47* (2), 337-344.

[51] Xie, L.; Bourne, P. E., A robust and efficient algorithm for the shape description of protein structures and its application in predicting ligand binding sites. *BMC Bioinformatics* **2007**, *8 Suppl 4*, S9.

[52] Kellenberger, E.; Muller, P.; Schalon, C.; Bret, G.; Foata, N.; Rognan, D., sc-PDB: an annotated database of druggable binding sites from the Protein Data Bank. *J Chem Inf Model* **2006**, *46* (2), 717-727.

[53] Marcou, G.; Rognan, D., Optimizing fragment and scaffold docking by use of molecular interaction fingerprints. *J Chem Inf Model* **2007**, *47* (1), 195-207.

[54] Desaphy, J.; Raimbaud, E.; Ducrot, P.; Rognan, D., Encoding protein-ligand interaction patterns in fingerprints and graphs. *J Chem Inf Model* **2013**, *53* (3), 623-637.

[55] Radifar, M.; Yuniarti, N.; Istyastono, E. P., PyPLIF: Python-based Protein-Ligand Interaction Fingerprinting. *Bioinformatics* **2013**, *9* (6), 325-328.

[56] Zhao, Z.; Xie, L.; Bourne, P. E., Insights into the binding mode of MEK type-III inhibitors. A step towards discovering and designing allosteric kinase inhibitors across the human kinome. *PLoS One* **2017**, *12* (6), e0179936.

- [57] Zhao, Z.; Bourne, P. E., Structural Insights into the Binding Modes of Viral RNA-Dependent RNA Polymerases Using a Function-Site Interaction Fingerprint Method for RNA Virus Drug Discovery. *J Proteome Res* **2020**, *19* (11), 4698-4705.
- [58] Zhao, Z.; Bourne, P. E., Revealing Acquired Resistance Mechanisms of Kinase-Targeted Drugs Using an on-the-Fly, Function-Site Interaction Fingerprint Approach. *J Chem Theory Comput* **2020**, *16* (5), 3152-3161.
- [59] Liao, J. J., Molecular recognition of protein kinase binding pockets for design of potent and selective kinase inhibitors. *J Med Chem* **2007**, *50* (3), 409-424.
- [60] Sordella, R.; Bell, D. W.; Haber, D. A.; Settleman, J., Gefitinib-sensitizing EGFR mutations in lung cancer activate anti-apoptotic pathways. *Science* **2004**, *305* (5687), 1163-1167.
- [61] Gajiwala, K. S.; Feng, J.; Ferre, R.; Ryan, K.; Brodsky, O.; Weinrich, S.; Kath, J. C.; Stewart, A., Insights into the aberrant activity of mutant EGFR kinase domain and drug recognition. *Structure* **2013**, *21* (2), 209-219.
- [62] Leproult, E.; Barluenga, S.; Moras, D.; Wurtz, J. M.; Winssinger, N., Cysteine mapping in conformationally distinct kinase nucleotide binding sites: application to the design of selective covalent inhibitors. *J Med Chem* **2011**, *54* (5), 1347-1355.
- [63] Zhao, Z.; Liu, Q.; Bliven, S.; Xie, L.; Bourne, P. E., Determining Cysteines Available for Covalent Inhibition Across the Human Kinome. *J Med Chem* **2017**, *60* (7), 2879-2889.
- [64] Lin, J. J.; Riely, G. J.; Shaw, A. T., Targeting ALK: Precision Medicine Takes on Drug Resistance. *Cancer Discov* **2017**, *7* (2), 137-155.
- [65] Baldo, B. A.; Pham, N. H., Adverse reactions to targeted and non-targeted chemotherapeutic drugs with emphasis on hypersensitivity responses and the invasive metastatic switch. *Cancer Metastasis Rev* **2013**, *32* (3-4), 723-761.
- [66] O'Brien, S. G.; Guilhot, F.; Larson, R. A.; Gathmann, I.; Baccarani, M.; Cervantes, F.; Cornelissen, J. J.; Fischer, T.; Hochhaus, A.; Hughes, T.; Lechner, K.; Nielsen, J. L.; Rousselot, P.; Reiffers, J.; Saglio, G.; Shepherd, J.; Simonsson, B.; Gratwohl, A.; Goldman, J. M.; Kantarjian, H.; Taylor, K.; Verhoef, G.; Bolton, A. E.; Capdeville, R.; Druker, B. J.; Investigators, I., Imatinib compared with interferon and low-dose cytarabine for newly diagnosed chronic-phase chronic myeloid leukemia. *N Engl J Med* **2003**, *348* (11), 994-1004.
- [67] Dy, G. K.; Adjei, A. A., Understanding, recognizing, and managing toxicities of targeted anticancer therapies. *CA Cancer J Clin* **2013**, *63* (4), 249-279.
- [68] Posy, S. L.; Hermsmeider, M. A.; Vaccaro, W.; Ott, K. H.; Todderud, G.; Lippy, J. S.; Trainor, G. L.; Loughney, D. A.; Johnson, S. R., Trends in kinase selectivity: insights for target class-focused library screening. *J Med Chem* **2011**, *54* (1), 54-66.
- [69] Aldeghi, M.; Gapsys, V.; de Groot, B. L., Predicting Kinase Inhibitor Resistance: Physics-Based and Data-Driven Approaches. *ACS Cent Sci* **2019**, *5* (8), 1468-1474.
- [70] Yun, C. H.; Mengwasser, K. E.; Toms, A. V.; Woo, M. S.; Greulich, H.; Wong, K. K.; Meyerson, M.; Eck, M. J., The T790M mutation in EGFR kinase causes drug resistance by increasing the affinity for ATP. *Proc Natl Acad Sci U S A* **2008**, *105* (6), 2070-2075.

- [71] Katayama, R.; Shaw, A. T.; Khan, T. M.; Mino-Kenudson, M.; Solomon, B. J.; Halmos, B.; Jessop, N. A.; Wain, J. C.; Yeo, A. T.; Benes, C.; Drew, L.; Saeh, J. C.; Crosby, K.; Sequist, L. V.; Iafrate, A. J.; Engelman, J. A., Mechanisms of acquired crizotinib resistance in ALK-rearranged lung Cancers. *Sci Transl Med* **2012**, 4 (120), 120ra17.
- [72] Weisberg, E.; Boulton, C.; Kelly, L. M.; Manley, P.; Fabbro, D.; Meyer, T.; Gilliland, D. G.; Griffin, J. D., Inhibition of mutant FLT3 receptors in leukemia cells by the small molecule tyrosine kinase inhibitor PKC412. *Cancer Cell* **2002**, 1 (5), 433-443.
- [73] Wu, Y. L.; Zhang, L.; Kim, D. W.; Liu, X.; Lee, D. H.; Yang, J. C.; Ahn, M. J.; Vansteenkiste, J. F.; Su, W. C.; Felip, E.; Chia, V.; Glaser, S.; Pultar, P.; Zhao, S.; Peng, B.; Akimov, M.; Tan, D. S. W., Phase Ib/II Study of Capmatinib (INC280) Plus Gefitinib After Failure of Epidermal Growth Factor Receptor (EGFR) Inhibitor Therapy in Patients With EGFR-Mutated, MET Factor-Dysregulated Non-Small-Cell Lung Cancer. *J Clin Oncol* **2018**, 36 (31), 3101-3109.
- [74] Vamathevan, J.; Clark, D.; Czodrowski, P.; Dunham, I.; Ferran, E.; Lee, G.; Li, B.; Madabhushi, A.; Shah, P.; Spitzer, M.; Zhao, S., Applications of machine learning in drug discovery and development. *Nat Rev Drug Discov* **2019**, 18 (6), 463-477.
- [75] Dunn, M. C.; Bourne, P. E., Building the biomedical data science workforce. *PLoS Biol* **2017**, 15 (7), e2003082.
- [76] Coley, C. W.; Green, W. H.; Jensen, K. F., Machine Learning in Computer-Aided Synthesis Planning. *Acc Chem Res* **2018**, 51 (5), 1281-1289.
- [77] Bagherian, M.; Sabeti, E.; Wang, K.; Sartor, M. A.; Nikolovska-Coleska, Z.; Najarian, K., Machine learning approaches and databases for prediction of drug-target interaction: a survey paper. *Brief Bioinform* **2021**, 22 (1), 247-269.
- [78] Christmann-Franck, S.; van Westen, G. J.; Papadatos, G.; Beltran Escudie, F.; Roberts, A.; Overington, J. P.; Domine, D., Unprecedentedly Large-Scale Kinase Inhibitor Set Enabling the Accurate Prediction of Compound-Kinase Activities: A Way toward Selective Promiscuity by Design? *J Chem Inf Model* **2016**, 56 (9), 1654-1675.
- [79] Sorgenfrei, F. A.; Fulle, S.; Merget, B., Kinome-Wide Profiling Prediction of Small Molecules. *ChemMedChem* **2018**, 13 (6), 495-499.
- [80] Li, X.; Li, Z.; Wu, X.; Xiong, Z.; Yang, T.; Fu, Z.; Liu, X.; Tan, X.; Zhong, F.; Wan, X.; Wang, D.; Ding, X.; Yang, R.; Hou, H.; Li, C.; Liu, H.; Chen, K.; Jiang, H.; Zheng, M., Deep Learning Enhancing Kinome-Wide Polypharmacology Profiling: Model Construction and Experiment Validation. *J Med Chem* **2020**, 63 (16), 8723-8737.
- [81] Miljkovic, F.; Bajorath, J., Data structures for computational compound promiscuity analysis and exemplary applications to inhibitors of the human kinome. *J Comput Aided Mol Des* **2020**, 34 (1), 1-10.