

# We are IntechOpen, the world's leading publisher of Open Access books Built by scientists, for scientists

6,900

Open access books available

185,000

International authors and editors

200M

Downloads

Our authors are among the

154

Countries delivered to

TOP 1%

most cited scientists

12.2%

Contributors from top 500 universities



WEB OF SCIENCE™

Selection of our books indexed in the Book Citation Index  
in Web of Science™ Core Collection (BKCI)

Interested in publishing with us?  
Contact [book.department@intechopen.com](mailto:book.department@intechopen.com)

Numbers displayed above are based on latest data collected.  
For more information visit [www.intechopen.com](http://www.intechopen.com)



# A Combination of Finite Difference and Finite Element Methods for Temperature and Stress Predictions of Early-Age Concrete Members

*Tu Anh Do*

## Abstract

A combination of finite difference and finite element methods was employed to develop a model for predicting the temperature development and thermally induced stresses in early-age concrete members (such as bridge footings, piers, columns, girders, and slabs). A two-dimensional finite difference (FD) scheme was utilized for heat generation and transfer within a hydrating concrete member. A finite element (FE) plane strain model was then established to compute the thermal stresses in the concrete subjected to the temperature changes. The FD-FE model can be easily created using any programming language, and the methodology can be used to predict the temperatures and stresses as well as assess the possibility of early-age cracking in concrete members.

**Keywords:** finite difference, finite element, early-age concrete, heat of hydration, thermal stress, thermal cracking, insulation layer

## 1. Introduction

Thermal cracking is one of the biggest concerns regarding early-age concrete. Hydration of a large amount of cement results in higher peak temperatures as well as larger temperature differences between the concrete surface and the core. Such large temperature differentials can cause substantial tensile stresses that might increase the likelihood of early-age cracking in the concrete [1].

In order to control the temperature in early-age concrete structures, thus mitigating the risk of thermal cracking, temperature and stress analyses should be performed beforehand. Different methods have been used for predicting the temperatures and thermal stresses concrete structures at an early age. Among them, the Schmidt's method is a simple approach but has been widely used for computing the temperatures for single nodes in the concrete [1]. The finite difference (FD) method was also employed in spreadsheet programs [2, 3] or in computer programs [4, 5] for calculating temperature-time histories in concrete elements. A two-dimensional model for thermal analysis based on the finite volume method (FVM) was introduced by Yikici and Chen [6]. The finite element (FE) method has been

commonly utilized for both thermal and stress analyses of early-age concrete structures [7–13].

This chapter presents a two-dimensional FD scheme for thermal analysis of a concrete element. An FE analysis was then used to calculate the temperature-induced stresses in the concrete. The analysis results were compared with measurements of actual concrete elements. The combined approach can be a simple and useful tool for analyzing temperatures and thermal stresses in early-age concrete elements.

## 2. FD scheme for solving heat transfer

The heat evolution and temperature in a concrete element can be known by solving the governing differential equation as described in Eq. (1):

$$\rho c_p \frac{\partial T}{\partial t} = k \left( \frac{\partial^2 T}{\partial x^2} + \frac{\partial^2 T}{\partial y^2} + \frac{\partial^2 T}{\partial z^2} \right) + \dot{Q} \quad (1)$$

where  $\rho$  is density;  $c_p$  is specific heat;  $T$  is temperature;  $t$  is time;  $k$  is thermal conductivity;  $x$ ,  $y$ , and  $z$  are coordinates; and  $Q$  is heat evolution rate.

The finite difference formulation for any node in the system can be written as [14]:

$$\sum_{All \ sides} \dot{Q}^i + \dot{E}^i = \rho c_p V \frac{T_m^{i+1} - T_m^i}{\Delta t} \quad (2)$$

where  $\dot{Q}^i$  = rate of heat conduction at time step  $i$ ;  $\dot{E}^i$  = rate of heat generation at time step  $i$ ;  $T_m^i$  and  $T_m^{i+1}$  = temperatures of node  $m$  at time step  $i$  and  $i + 1$ , respectively; and  $\Delta t$  = time interval.

During the actual construction stage of concrete structures, the concrete is usually covered by formwork and/or insulation materials. Heat generated from cement hydration is conducted through the formwork and/or insulation layer before being dissipated to the surroundings by surface convection (**Figure 1**).

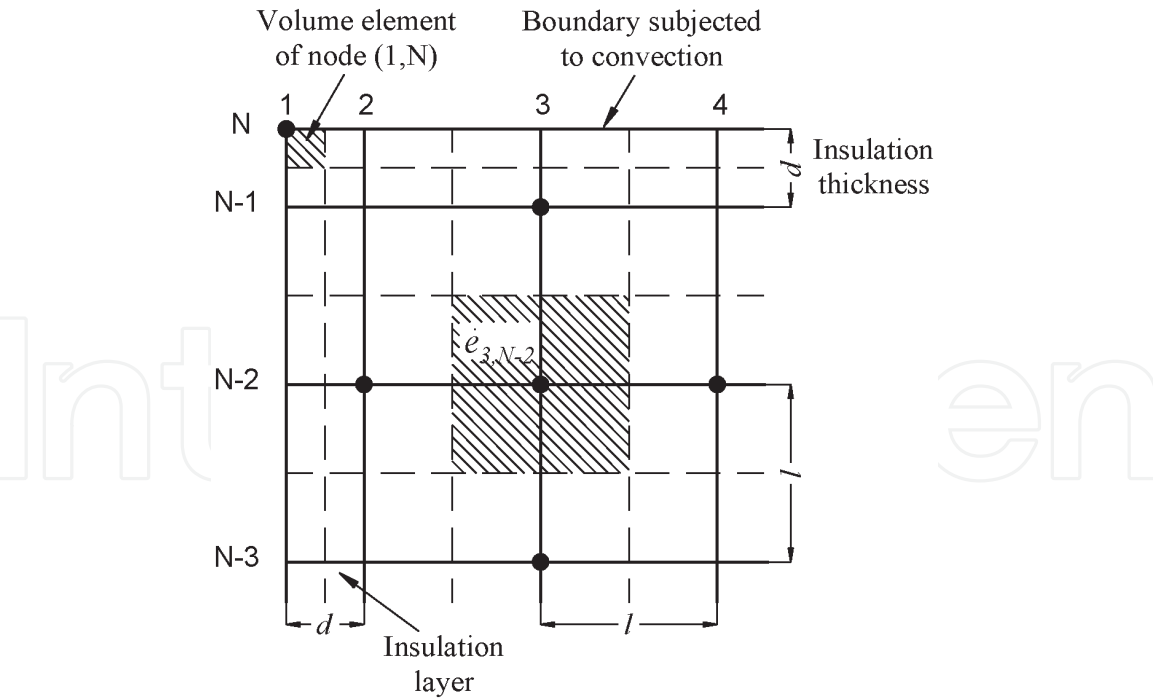
Considering a formwork/insulation layer covering the concrete, and assuming a unit square mesh for the concrete ( $\Delta x = \Delta y = l$ ) and an insulation thickness of  $d$  (**Figure 2**), the FD formulation for the interior node can be computed using Eq. (3).

$$T_{m,n}^{i+1} = \tau_F (T_{m-1,n}^i + T_{m+1,n}^i + T_{m,n+1}^i + T_{m,n-1}^i) + T_{m,n}^i (1 - 4\tau_F) + \tau_F \frac{\dot{e}_{m,n} l^2}{k} \quad (3)$$

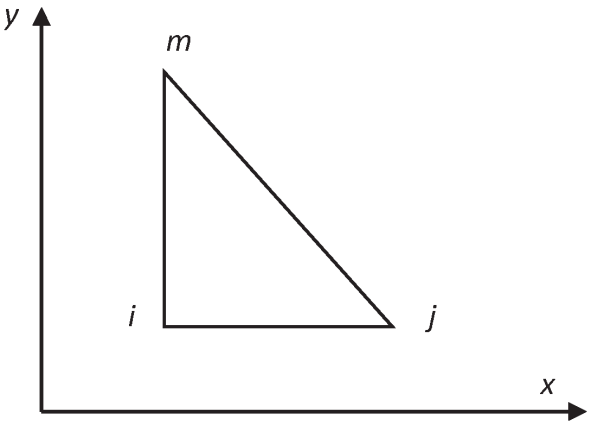
where  $T_{m,n}^i$  = temperatures of node  $(m,n)$  at time step  $i$ ;  
 $T_{m-1,n}^i, T_{m+1,n}^i, T_{m,n+1}^i, T_{m,n-1}^i$  = temperatures at neighboring nodes; and  
 $\tau_F$  = dimensionless Fourier number,

$$\tau_F = \frac{k \Delta t}{\rho c_p l^2} \quad (4)$$

Using Eq. (2), the FD equations for each of the four outer corner nodes of the insulation can be derived. For instance, the quarter size volume element of the insulation layer ( $d \times d \times 1$ ) represented by the top left outer corner node (1,N) is



**Figure 1.**  
 FD mesh for heat conduction of concrete covered with insulation layer.



**Figure 2.**  
 FE plane triangular element.

subjected to convection on both sides and to conduction from the right and bottom nodes, the energy balance relation above (Eq. (2)) becomes:

$$T_{1,N}^{i+1} = T_{1,N}^i \left( 1 - 4A_1 - 4A_1 \frac{hd}{k_s} \right) + 2A_1 \left( T_{1,N-1}^i + T_{2,N}^i + 2T_a \frac{hd}{k_s} \right) \tag{5}$$

where  $\rho_s$  = insulation material density;  $c_{ps}$  = specific heat of insulation material;  $k_s$  = thermal conductivity of insulation material;  $T_a$  is the ambient temperature;  $h$  is the convection coefficient; and

$$A_1 = \frac{k_s \Delta t}{\rho_s c_{ps} d^2} \tag{6}$$

The insulation volume element at the surface node (2,N) adjacent to the top left outer corner node is subjected to convection at the top and conduction at the left, right, and bottom surfaces. An energy balance on this element gives:

$$T_{2,N}^{i+1} = T_{2,N}^i \left[ 1 - \frac{2h(d+l)A_2}{k_s} - 2A_2 - 2dlA_2 - \frac{2(d+l)A_2}{d} \right] + 2A_2 \left[ T_{1,N}^i + dlT_{3,N}^i + \frac{d+l}{d}T_{2,N-1}^i + \frac{h(d+l)}{k_s}T_a \right] \quad (7)$$

where

$$A_2 = \frac{k_s \Delta t}{\rho_s c_{ps}(d+l)d} \quad (8)$$

Similarly, the insulation volume element of half size at a surface node is subjected to convection at the top and conduction at the left, right, and bottom surfaces. An energy balance on this element gives:

$$T_{m,n}^{i+1} = T_{m,n}^i \left( 1 - \frac{2d}{l}A_3 - \frac{2l}{d}A_3 - \frac{2hl}{k_s}A_3 \right) + A_3 \left( \frac{d}{l}T_{m-1,n}^i + \frac{d}{l}T_{m+1,n}^i + \frac{2l}{d}T_{m,n-1}^i + \frac{2hl}{k_s}T_a \right) \quad (9)$$

where

$$A_3 = \frac{k_s \Delta t}{\rho_s c_{ps}dl} \quad (10)$$

The “mixed” volume element at the concrete’s corner node (2,N-1) is subjected to conduction at the four sides. An energy balance on this element gives:

$$T_{2,N-1}^{i+1} = T_{2,N-1}^i \left[ 1 - \frac{4(l+d)A_4}{d} - \frac{4dA_4}{l} - \frac{4kA_4}{k_s} \right] + A_4 \left[ \frac{2(l+d)}{d}T_{1,N-1}^i + \frac{2(l+d)}{d}T_{2,N}^i + 2\left(\frac{d}{l} + \frac{k}{k_s}\right)T_{2,N-2}^i + 2\left(\frac{d}{l} + \frac{k}{k_s}\right)T_{3,N-1}^i + \dot{e}_{2,N-1} \frac{l^2}{k_s} \right] \quad (11)$$

where

$$A_4 = \frac{k_s \Delta t}{\rho_s d(d+2l)c_{ps} + \rho c_p l^2} \quad (12)$$

The “mixed” volume element at a concrete’s top surface node is also subjected to conduction at the four sides. An energy balance on this element gives:

$$T_{m,N-1}^{i+1} = T_{m,N-1}^i \left( 1 - \frac{2k_s l}{d}A_5 - \frac{2k_s d}{l}A_5 - 4kA_5 \right) + A_5 \left[ \frac{2k_s l}{d}T_{m,N}^i + \left( \frac{k_s d}{l} + k \right)T_{m-1,N-1}^i + \left( \frac{k_s d}{l} + k \right)T_{m+1,N-1}^i + 2kT_{m,N-2}^i + e_{m,N-1} l^2 \right] \quad (13)$$

where

$$A_5 = \frac{\Delta t}{(\rho_s dl c_{ps} + \rho l^2 c_p)} \quad (14)$$

It is noted that the stability criterion of the explicit method requires all primary coefficients to be positive or zero for all nodes:

$$\left\{ \begin{array}{l} 1 - 4\tau_F \geq 0 \\ 1 - 4A_1 - 4A_1 \frac{hd}{k_s} \geq 0 \\ 1 - \frac{2h(d+l)A_2}{k_s} - 2A_2 - 2dlA_2 - \frac{2(d+l)A_2}{d} \geq 0 \\ 1 - \frac{2d}{l}A_3 - \frac{2l}{d}A_3 - \frac{2hl}{k_s}A_3 \geq 0 \\ 1 - \frac{4(l+d)A_4}{d} - \frac{4dA_4}{l} - \frac{4kA_4}{k_s} \geq 0 \\ 1 - \frac{2k_s l}{d}A_5 - \frac{2k_s d}{l}A_5 - 4kA_5 \geq 0 \end{array} \right. \quad (15)$$

The maximum time step used to solve the problem must satisfy Eq. (15) above.

If an insulation layer is not used, the new corner temperature  $T_{m,n+1}^i$  will be simplified to:

$$T_{m,n}^{i+1} = T_{m,n}^i \left( 1 - 4\tau_F - 4\tau_F \frac{h_c l}{k} \right) + 2\tau_F \left( T_{m+1,n}^i + T_{m,n-1}^i + 2T_a \frac{h_c l}{k} + \frac{\dot{e}_{m,n} l^2}{2k} \right) \quad (16)$$

and the next time step temperature of a top surface node will be simplified to:

$$T_{m,n}^{i+1} = T_{m,n}^i \left( 1 - 4\tau_F - 2\tau_F \frac{h_c l}{k} \right) + \tau_F \left( T_{m-1,n}^i + T_{m+1,n}^i + 2T_{m,n-1}^i + 2T_a \frac{h_c l}{k} + \frac{\dot{e}_{m,n} l^2}{k} \right) \quad (17)$$

The maximum time step in this case is as follows:

$$\Delta t \leq \frac{l^2 \rho c_p}{4k \left( 1 + \frac{h_c l}{k} \right)} \quad (18)$$

## 2.1 Rate of hydration heat

The rate of heat liberated from cement hydration depends on the temperature of the concrete element itself. The heat rate can be experimentally determined using isothermal [10, 15], adiabatic [16, 17], or semi-adiabatic calorimetry [4]. The experimental adiabatic temperature rise (ATR) can be converted into a maturity-based heat rate as presented by Ballim and Graham [18], in which the total heat ( $Q$ ) liberated at any time ( $t$ ) is firstly computed from the ATR using the following relationship:

$$Q = c_p (T_t - T_0) \frac{m_s}{m_c} \quad (19)$$

where  $T_t$  = sample temperature at time  $t$ ;  $T_0$  = initial sample temperature;  $m_s$  = mass of concrete sample; and  $m_c$  = mass of the cementitious materials in the mix. The heat rate in the adiabatic condition is then calculated by differentiating Eq. (19):

$$q_t = \frac{dQ}{dt} \quad (20)$$

The “maturity heat rate” ( $q_{te}$ ), as shown in Eq. (21), is used in a further thermal analysis of concrete, which considers the maturity of concrete.

$$q_{t_e} = \frac{dQ}{dt_e} \quad (21)$$

where  $t_e$  is equivalent age (or maturity) [19]:

$$t_e = \int_0^t \exp \left( \frac{E_a}{R} \left( \frac{1}{T_r} - \frac{1}{T_c(t)} \right) \right) dt \quad (22)$$

where  $E_a$  is apparent activation energy (J/mol);  $R$  is the universal gas constant (8.314 J/mol-K);  $T_c(t)$  is concrete temperature (K); and  $T_r$  is reference temperature (K).

The activation energy ( $E_a$ ) of a cement blend can be estimated from its chemical compositions using the following relationship derived by Poole [20]:

$$E_a = 41230 + 1416000 \left( p_{C_3A} + p_{C_4AF} \right) p_{cem} p_{SO_3} p_{cem} - 347000 p_{Na_2O_{eq}} - 19.8 Blaine + 29600 p_{FA} p_{FA-CaO} + 16200 p_{slag} - 51600 p_{SF} \quad (23)$$

where  $p_{FA}$  = % fly ash in the cementing blend;  $p_{FA-CaO}$  = % CaO in fly ash;  $p_{slag}$  = % slag in the cementing blend;  $p_{SF}$  = percentage of silica fume in the cementitious materials; Blaine = cement fineness ( $m^2/kg$ );  $p_i$  = percentage of  $i$  component in the cement ( $C_3A$ ,  $C_4AF$ ,  $SO_3$ ,  $cem$  = cement); and  $p_{Na_2O_{eq}}$  = %  $Na_2O_{eq}$  in cement (=  $0.658 \times \%K_2O + \%Na_2O$ ).

The actual heat rate, which will be used in a numerical model, can be reconstructed from the maturity heat rate using the following equation:

$$q_t = q_{t_e} \frac{dt_e}{dt} \quad (24)$$

The maturity-based heat rate curve  $q_{te}$  should be built from an isothermal or adiabatic test, before the actual heat rate can be computed at each time step for the analysis [18]. The drawback of this method is that the total time of the constructed maturity-based heat rate is limited by the test duration.

There are several models to mathematically characterize the heat generation from the cement hydration. The 3-parameter exponential degree of hydration model show in Eq. (25) [21] has been widely used for predicting temperature development in concrete since it includes the temperature effect through the equivalent age:

$$\alpha(t_e) = \alpha_u \exp \left( - \left[ \frac{\tau}{t_e} \right]^\beta \right) \quad (25)$$

where  $\alpha_u$  is ultimate degree of hydration;  $\tau$  and  $\beta$  are hydration parameters.

The total cumulative heat  $Q(t_e)$  is proportional to the degree of hydration  $\alpha(t_e)$  as expressed in Eq. (26). The rate of heat generation with respect to equivalent age and real age can be determined using Eqs. (27) and (28), respectively.



$$Q(t_e) = Q_c \cdot \alpha(t_e) \quad (26)$$

$$q(t_e) = \frac{dQ}{dt_e} = Q_c \cdot \alpha(t_e) \cdot \left(\frac{\tau}{t_e}\right)^\beta \cdot \frac{\beta}{t_e} \quad (27)$$

$$q(t) = \frac{dQ}{dt} = \frac{dQ}{dt_e} \cdot \frac{dt_e}{dt} = Q_c \cdot \alpha(t_e) \cdot \left(\frac{\tau}{t_e}\right)^\beta \cdot \frac{\beta}{t_e} \cdot \exp\left(\frac{E_a}{R} \left(\frac{1}{T_r} - \frac{1}{T_c(t)}\right)\right) \quad (28)$$

where  $Q_c$  is the total available heat ( $\text{J/m}^3$ ).

The hydration parameters ( $\alpha_u, \tau$  and  $\beta$ ) can be determined from the fitted curve, Eq. (25), using the experimental ATR data. These parameters can also be calculated from an experimental isothermal cumulative heat curve without converting the real time into the equivalent age because in the isothermal condition (i.e., at a reference temperature of  $23^\circ\text{C}$ ), the test time is identical to the equivalent age.

### 3. FE method for solving thermal stresses

Since a common concrete structure has one dimension larger than the other two, the middle cross section should be analyzed; hence, a FE plane strain problem is selected for the stress computation. A triangular element is chosen with nodes  $i, j, m$  numbered in a counterclockwise order as illustrated in **Figure 2** [22]. The strain at any point within the element is estimated by Eq. (29):

$$\{\varepsilon\} = [B]\{a^e\} \quad (29)$$

where  $a^e$  = element displacement vector, and

$$[B] = \frac{1}{2\Delta} \begin{bmatrix} b_i & 0 & b_j & 0 & b_m & 0 \\ 0 & c_i & 0 & c_j & 0 & c_m \\ c_i & b_i & c_j & b_j & c_m & b_m \end{bmatrix} \quad (30)$$

in which  $a_i = x_j y_m - x_m y_j$ ;  $b_i = y_j - y_m$ ;  $c_i = x_m - x_j$  with the other coefficients obtained by a cycle permutation of the subscripts in the order  $i, j, m$ ; and  $\Delta$  is area of the triangle.

The stress vector in the element can be calculated as:

$$\{\sigma\} = [\sigma_x \ \sigma_y \ \tau_{xy}]^T = [D](\{\varepsilon\} - \{\varepsilon_0\}) \quad (31)$$

where

$$[D] = \frac{E}{(1+\nu)(1-2\nu)} \begin{bmatrix} 1-\nu & \nu & 0 \\ \nu & 1-\nu & 0 \\ 0 & 0 & (1-2\nu)/2 \end{bmatrix} \quad (32)$$

and the thermal strain is derived as [22]:

$$\{\varepsilon_0\} = (1+\nu)\alpha_c\theta^e[1 \ 1 \ 0]^T \quad (33)$$

in which  $\nu$  = Poisson's ratio,  $\alpha_c$  = coefficient of thermal expansion, and  $\theta^e$  = temperature change (from the previous time step to the current time step) subjected to the element. The element stiffness matrix  $ijm$  is calculated using the following equation:



$$k_e = \int B^T DB t_t dx dy \text{ or } k_e = B^T DB t_t \Delta \quad (34)$$

where  $t_t$  = element thickness.

The nodal forces due to thermal strain is computed as follows:

$$\{f_T\} = \int_v [B]^T [D] \{\epsilon_0\} dv = \frac{E \alpha_c \theta^e}{2(1-2\nu)} [b_i \ c_i \ b_j \ c_j \ b_m \ c_m]^T \quad (35)$$

in which  $E$  = elastic modulus. The nodal displacement vector  $U$  is derived by solving the global system of equations:

$$[K]\{U\} = \{f_T\} \quad (36)$$

#### Computational Procedure

- FD thermal analysis:

1. Define geometry of the structure (including the nodal grid), initial material properties, initial temperature and boundary conditions, and time interval.
2. Compute the nodal degree of hydration and the rate of heat evolution.
3. Compute the new temperature at each node.
4. Iterate (2) & (3) and record the temperatures.

- FE stress analysis:

5. Divide the nodal grid into triangular elements (the vertices coincide with the FD grid nodes).
6. At  $t = n$  ( $n = 1, 2, \dots$ ), calculate average temperature, equivalent age and degree of hydration of each element.
7. Let  $i = 1$ , compute each element's effective modulus.
8. Compute element stiffness matrix, global stiffness matrix, and equivalent nodal forces; solve for nodal displacements and element stresses.
9. Let  $i = i + 1$  and iterate (7) and (8) till  $i = n$ . Sum all the stresses at step (8) to get the total stress.
10. Let  $n = n + 1$ . Iterate (6) through (10) until the final time step is achieved.

#### 4. Temperature analysis of bridge pier footing

A bridge pier footing constructed in Orlando, Florida was monitored for temperature development within 7 days after casting (**Figure 3**). The concrete footing



**Figure 3.**  
*Bridge footing for monitoring in Orlando, Florida.*

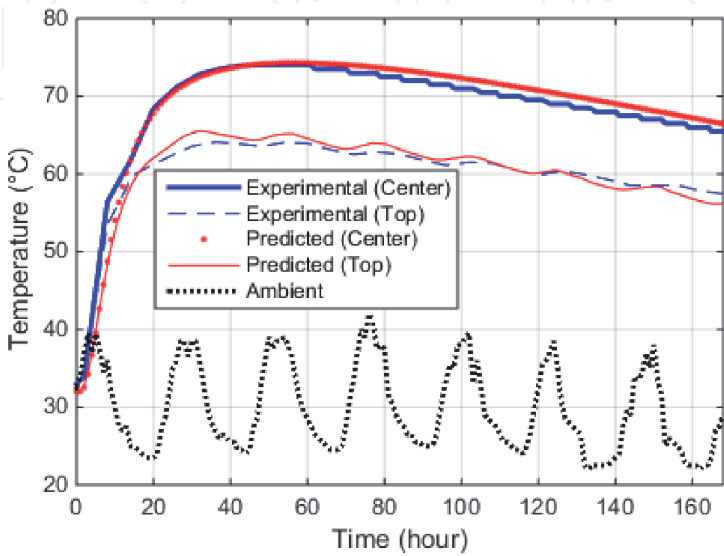
had dimensions of 6.71-m × 3.05-m × 1.75-m and was insulated with 25.4-mm thick polystyrene foam boards at its bottom, top, and sides during 7 days.

The cementitious materials of Mix #1 was experimentally measured for the heat of hydration using an isothermal calorimeter. The hydration parameters and calculated activation energy ( $E_a$ ) for Mix #1 are presented in **Table 1**.

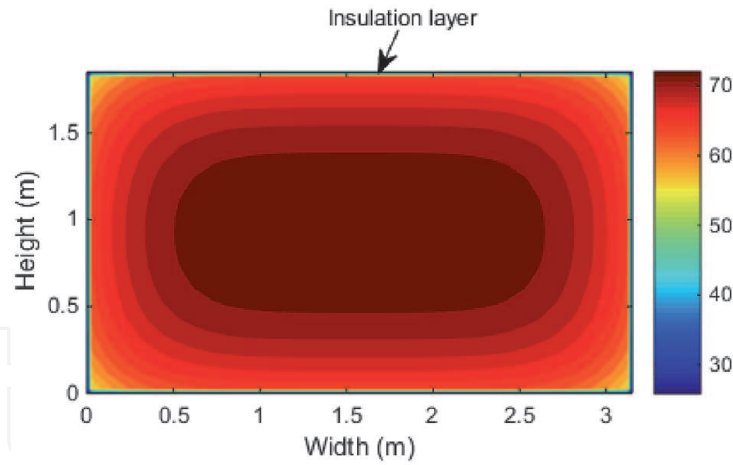
The concrete had a density of 2238 kg/m<sup>3</sup>, specific heat of 1045 J/kg-K, and thermal conductivity of 1.87 W/m-K. The footing was insulated with Styrofoam that has density, thermal conductivity, and specific heat of 16 kg/m<sup>3</sup>, 0.04 W/m-K, and 1200 J/kg-K, respectively [14]. The boundary conditions consist of the initial

Mix	$\tau$ (h)	$\beta$	$\alpha_u$	$Q_c$ (J/m <sup>3</sup> )	$E_a$ (J/mol)
#1	16.73	0.8764	8.314	$1.26 \times 10^8$	35,451
#2	14.0	0.94	0.703	$1.67 \times 10^8$	41,800

**Table 1.**  
*Hydration parameters and activation energy.*



**Figure 4.**  
*Predicted and measured temperature profiles in the footing.*



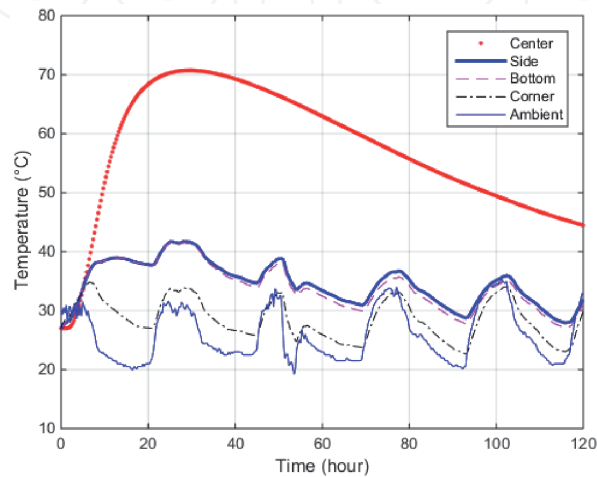
**Figure 5.**  
*FD temperature contour in the footing at 40 h (°C).*

temperature and the external ambient temperature over time. The air convection coefficient at the insulation surfaces was assumed to be  $13.9 \text{ W/m}^2\text{-K}$  [5, 23].

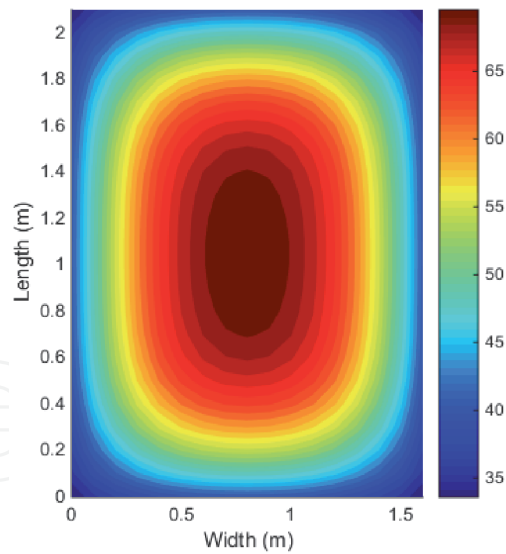
Two temperature sensors were installed at the center and at the center top surface of the footing to record temperatures within 7 days after placement. The measured temperatures at the center and top, and the ambient temperature are shown in **Figure 4**. A peak measured temperature of  $74^\circ\text{C}$  occurred in the middle 42 hours after concrete casting. **Figure 5** shows the temperature distribution in the footing at 40 h calculated by the FD model. The predicted FD temperatures at the center and the top of the footing are also plotted in **Figure 4**. It is clear that the temperature histories computed using the FD model show very close agreement with those collected in the field.

### 5. Temperature and thermal stress predictions of cap beam

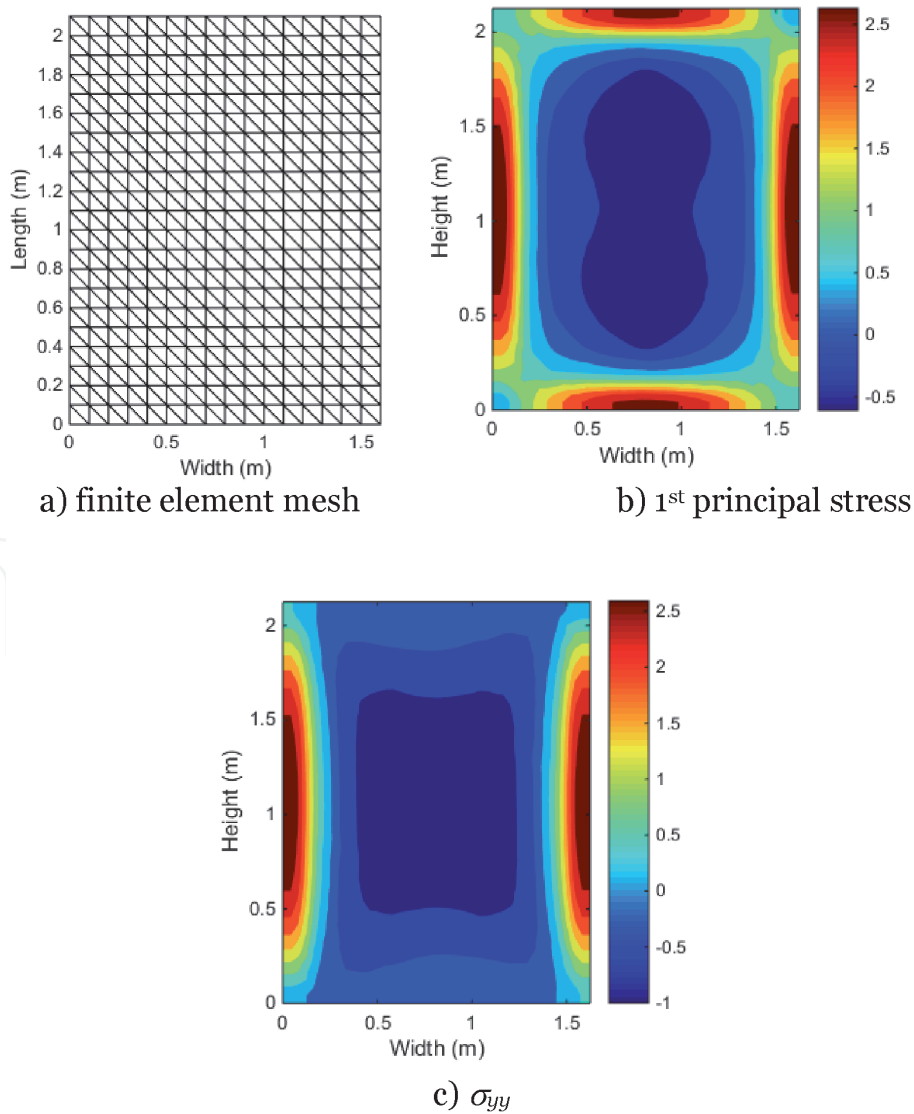
A bridge concrete cap beam (pier cap) was analyzed for temperatures and thermal stresses due to the heat of cement hydration. The cross section of the pier cap was 1.6-m by 2.1-m. The concrete used in the cap beam is Mix #2 with the hydration parameters and activation energy listed in **Table 1**. The concrete coefficient of thermal expansion (CTE) of  $8.5 \times 10^{-6}/^\circ\text{C}$ , density of  $2287 \text{ kg/m}^3$ , the



**Figure 6.**  
*Temperature profiles at different points in the cap beam.*



**Figure 7.**  
*Temperature distribution of the section at 30 h.*



**Figure 8.**  
*FE mesh and stress distributions (MPa) in pier cap at 21 h.*

specific heat of 1028 J/kg-K, and thermal conductivity of 1.87 W/m-K were assumed in the analysis.

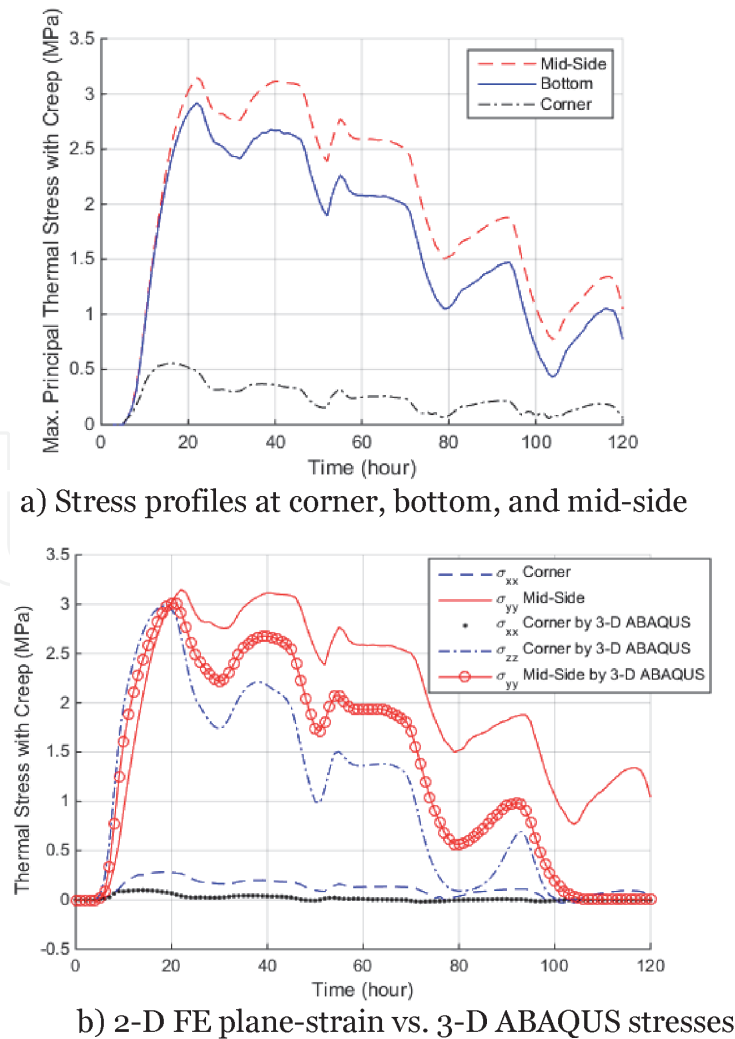
**Figure 6** shows the calculated temperature profiles at the core, corner and side of the section. The center temperature peaked at 70.7°C approximately 28 hours after casting. The temperature contours are also depicted in **Figure 7**.

The thermal analysis was followed by a stress calculation using the FE model with the element mesh shown in **Figure 8a**. The 1st principal stress and stress component  $\sigma_{yy}$  contours are shown in **Figure 8b** and **c**, respectively. The figure reveals that the maximum stress is  $\sigma_{yy}$  occurring at the mid-sides and having almost the same magnitude as the 1st principal stress.

The calculated stresses over time at different locations of the pier cap are plotted in **Figure 9**. Clearly, the maximum stress is  $\sigma_{yy}$  at the mid-sides, while  $\sigma_{xx}$  is the maximum stress at the corner (compared to  $\sigma_{yy}$ ), thus the middle sides have a higher risk of cracking.

To assess the model’s accuracy, the computed stress-time histories are compared with those obtained from the 3-D ABAQUS FE model developed by Lin and Chen [12]. It is worth noting that the ABAQUS model was validated using measurements on 2 concrete blocks. **Figure 9b** shows that the 2-D FE results reasonably match with those of the 3-D ABAQUS model.

The 3-D ABAQUS results reveal that the maximum stress is the component  $\sigma_{zz}$  at the corner. Nevertheless, the 2-D FE model cannot compute this stress component



**Figure 9.**  
*Calculated stresses in the pier cap.*

because it is out-of-plane. The plane element over-predicts  $\sigma_{xx}$  at the corner compared with that of the 3-D ABAQUS. The maximum stress  $\sigma_{zz}$  at the corner predicted using the 3-D ABAQUS model is about the same magnitude as  $\sigma_{yy}$  at the mid-sides, hence the critical stress magnitude as well as cracking risk can still be forecast by the 2-D analysis.

## 6. Conclusions

In this study, FD and FE formulations were created for solving the transient heat transfer equation and thermal stresses in a concrete element. The results of this study show that the approach that combines the FD and FE methods can be a useful and effective tool for predicting temperature evolution and thermally induced stresses in early-age concrete members with simple geometries. The FD model can analyze thermal behavior of a concrete placement covered with formwork or an insulation layer, thus it can help engineers/contractors control concrete temperature during construction.

## Acknowledgements


This work is financially supported by the Ministry of Transport of Vietnam. Special thanks are given to Prof. H. L. Chen and Mr. G. Leon at West Virginia University (WVU) for their contributions to this study.

## Author details

Tu Anh Do  
University of Transport and Communications, No. 3 Cau Giay Street, Dong Da District, Hanoi, Vietnam

\*Address all correspondence to: [doanhtu@utc.edu.vn](mailto:doanhtu@utc.edu.vn)

## IntechOpen

© 2020 The Author(s). Licensee IntechOpen. This chapter is distributed under the terms of the Creative Commons Attribution License (<http://creativecommons.org/licenses/by/3.0>), which permits unrestricted use, distribution, and reproduction in any medium, provided the original work is properly cited. 



## References

- [1] ACI, *207.1 R-05 Guide to Mass Concrete*. 2005.
- [2] Ballim, Y., *A numerical model and associated calorimeter for predicting temperature profiles in mass concrete*. Cement and Concrete Composites, 2004. **26**(6): p. 695–703.
- [3] Yikici, T.A. and H.-L. Chen, *Numerical prediction model for temperature development in mass concrete structures*. Transportation Research Record: Journal of the Transportation Research Board, 2015(2508): p. 102–110.
- [4] Riding, K.A., *Early age concrete thermal stress measurement and modeling*. 2007.
- [5] Do, T., et al., *A combined finite difference and finite element model for temperature and stress predictions of cast-in-place cap beam on precast columns*. Construction and Building Materials, 2019. **217**: p. 172–184.
- [6] Yikici, T.A. and R.H. Chen, *2D modeling temperature development of mass concrete structures at early age*, in *High Tech Concrete: Where Technology and Engineering Meet*. 2018, Springer. p. 612–620.
- [7] Bombich, A.A., S. Garner, and C.D. Norman, *Evaluation of Parameters Affecting Thermal Stresses in Mass Concrete*. 1991, Concrete Technology Information Analysis Center Vicksburg MS.
- [8] Waller, V., et al., *Using the maturity method in concrete cracking control at early ages*. Cement and Concrete Composites, 2004. **26**(5): p. 589–599.
- [9] Lawrence, A.M., et al., *Effect of early age strength on cracking in mass concrete containing different supplementary cementitious materials: Experimental and finite-element investigation*. Journal of Materials in Civil Engineering, 2011. **24**(4): p. 362–372.
- [10] Do, T., et al., *Importance of insulation at the bottom of mass concrete placed on soil with high groundwater*. Transportation Research Record: Journal of the Transportation Research Board, 2013(2342): p. 113–120.
- [11] Do, T., et al., *Determination of required insulation for preventing early-age cracking in mass concrete footings*. Transportation Research Record: Journal of the Transportation Research Board, 2014(2441): p. 91–97.
- [12] Lin, Y. and H.-L. Chen, *Thermal analysis and adiabatic calorimetry for early-age concrete members*. Journal of Thermal Analysis and Calorimetry, 2016. **124**(1): p. 227–239.
- [13] Do, T.A., et al., *Effects of thermal conductivity of soil on temperature development and cracking in mass concrete footings*. Journal of Testing and Evaluation, 2014. **43**(5): p. 1078–1090.
- [14] Cengel, Y., *Heat and mass transfer: fundamentals and applications*. 2014: McGraw-Hill Higher Education.
- [15] Do, T.A., *Influence of footing dimensions on early-age temperature development and cracking in concrete footings*. Journal of Bridge Engineering, 2014. **20**(3): p. 06014007.
- [16] Do, T.A., et al., *Evaluation of heat of hydration, temperature evolution and thermal cracking risk in high-strength concrete at early ages*. Case Studies in Thermal Engineering, 2020: p. 100658.
- [17] Lin, Y. and H.-L. Chen, *Thermal analysis and adiabatic calorimetry for early-age concrete members*. Journal of Thermal Analysis and Calorimetry, 2015. **122**(2): p. 937–945.



[18] Ballim, Y. and P. Graham, *A maturity approach to the rate of heat evolution in concrete*. Magazine of Concrete Research, 2003. 55(3): p. 249–256.

[19] Hansen, P.F. and E. Pedersen, *Curing of concrete structures*. 1984: BKI.

[20] Poole, J.L., *Modeling temperature sensitivity and heat evolution of concrete*. 2007: The University of Texas at Austin.

[21] Hansen, P.F. and E.J. Pedersen, *Maturity computer for controlled curing and hardening of concrete*. 1977.

[22] Zienkiewicz, O. and R. Taylor, *The finite element method 5th edition, volume 1: The Basis*. 2000, Oxford: Butterworth-Heinemann.

[23] Kim, S.G., *Effect of heat generation from cement hydration on mass concrete placement*, in *Civil Engineering*. 2010, Iowa State University.