

We are IntechOpen, the world's leading publisher of Open Access books Built by scientists, for scientists

6,900

Open access books available

185,000

International authors and editors

200M

Downloads

Our authors are among the

154

Countries delivered to

TOP 1%

most cited scientists

12.2%

Contributors from top 500 universities



WEB OF SCIENCE™

Selection of our books indexed in the Book Citation Index
in Web of Science™ Core Collection (BKCI)

Interested in publishing with us?
Contact book.department@intechopen.com

Numbers displayed above are based on latest data collected.
For more information visit www.intechopen.com



Insights into Ionizing-Radiation-Resistant Bacteria S-Layer Proteins and Nanobiotechnology for Bioremediation of Hazardous and Radioactive Waste

Kaïs Ghedira, Houcemeddine Othman, Taieb Saied,
Zouhair Majdi Baccar, Faouzi Hosni,
Ahmed Hichem Hamzaoui,
Kaliannan Thamaraiselvi, Hafedh Abdelmelek,
Najet Srairi-Abid, Maria Clara Costa and
Haïtham Sghaier

Additional information is available at the end of the chapter

<http://dx.doi.org/10.5772/64146>

Abstract

S-layers are crystalline arrays formed by proteinaceous subunits that cover the outer surface of many different kinds of microorganisms. This “proteinaceous cover” is particularly important in the case of ionizing-radiation-resistant bacteria (IRRB) that might be used in bioremediating hazardous and radioactive wastes (HRW). Despite the exponential growth in the number of comparative studies and solved proteic crystal structures, the proteic networks, diversity, and bioremediation-useful structural properties of IRRB S-layers remain unknown. Here, aided by literature, a tentative model of *Deinococcus radiodurans* R₁ S-layer proteins (SLPs) and the network of its main constituents were proposed. The domain analysis of this network was performed. Moreover, to show the diversity of IRRB S-layers, comparative genomics and computer modeling experiments were carried out. In addition, using *in silico* modeling, assisted by previously published data, the outermost exposed segments of *D. radiodurans* SlpA (surface layer protein A) that were predicted to interact with uranium were mapped. The combination of data and results pointed to various prospective applications of IRRB S-layers in nanobiotechnology for bioremediation of radioactive waste.

Keywords: bioremediation, ionizing-radiation-resistant bacteria, nanobiotechnology, radioactive waste, S-layer proteins, uranium

1. Introduction

Hazardous and radioactive wastes (HRW)—containing organic contaminants, toxic metals, and/or actinides as well as other radionuclides—released, for example, from nuclear weapons production, mining, and nuclear accidents can be legitimately considered as pools of ionizing-radiation-resistant bacteria (IRRB)—vegetative bacterial cells with D_{10} (acute ionizing-radiation dose for 90% reduction in colony-forming units (CFUs)) greater than 1 kilogray (kGy) [1]. Indeed, previously, IRRB were isolated from a high-level radioactive environments (*Kineococcus radiotolerans* SRS30216 [2]) and were engineered for metal remediation in radioactive mixed waste environments [3–5]. Yet, it is important to remember that, for instance, for the most studied “gold medalist” for radiation resistance, *D. radiodurans*, its ionizing-radiation resistance seems to be uncorrelated with its metal or actinide tolerance except in cases where the metal/actinide directly damages DNA [6].

Since the outer envelope—regular crystalline highly porous (glycol)protein meshworks ((s(urface)-layers)—of IRRB ([7, 8] and references therein) represents the first front that might encounter HRW and damaging radiation, it is expected to possess pertinent characteristics such as the ability to interact with actinides. These latter (e.g., americium-241 (^{241}Am), neptunium-237 (^{237}Np), plutonium-241 (^{241}Pu), and thorium-230 (^{230}Th)) might also be present in most radioactive wastes; however, uranium-238 (^{238}U) is the priority pollutant ([9] and references therein). Analyses of the uranium bound to S-layer proteins (SLPs) of vegetative cells of IRRB to form complexes were reported in previous studies [10–12]. Although it is assumed that bacteria-carrying SLPs use S-layer variation—changing proteic expression through rearrangements of DNA, etc.—to adapt to different stress factors ([12] and references therein), the role of S-layers in ionizing-radiation resistance has not yet been demonstrated, but a role in response to radiation damage has been proposed [13].

SLP lattices are composed of a single protein or glycoprotein monomers with apparent relative molecular weights ranging from 40 to 200 kDa depending on the particular bacterial species [14]. The presence of SLPs has been reported in hundreds of different species belonging to all major phylogenetic groups of (Gram-positive and Gram-negative) Eubacteria [15], e.g., *Aeromonas salmonicida* VapA; *Bacillus anthracis* Sap, EA1, and the BSL family; *Campylobacter fetus* SapA and SapB; *Caulobacter crescentus* RsaA, *Clostridium difficile* SlpA, and the CWP family; *D. radiodurans* SlpA and Hpi (Hexagonally packed intermediate-layer surface); *Geobacillus stearothermophilus* SbsA, SbsB, SbsC, SbsD, and SgsE; *Lactobacillus crispatus* CsbA, SlpA, and SlpC; *Synechococcus* spp. SwmA; *Tannerella forsythia* TfsA and TfsB; etc. ([16] and references therein). For review, a survey of SLPs with known amino acid (AA) sequence was conducted by Sára and Sleytr [14]. Among bacterial SLPs, glycosylated proteins have been observed [17], for instance, for different species belonging to Firmicutes like two lactobacilli [18], *Aneurini-bacillus thermoaerophilus* [19], etc.

A major challenge is to uncover structure-function relationships of SLPs to obtain many clues, for instance, about radioresistance and tolerance to toxic molecules. During decades following their discovery [20], various high-resolution techniques have been used for the observation of bacterial SLPs. Briefly, the biophysical methods of choice for studying the

structure of SLPs might be categorized into three groups: (1) electron-microscopy-based techniques (e.g., electron diffraction (e.g., SLPs of *Acetogenium kivui* [21]), freeze-etch electron microscopy (e.g., SLPs of *Thermoanaerobacter thermohydrosulfuricus* [22]), atomic force microscopy (AFM) (e.g., SbpA of *Lysinibacillus sphaericus* [23], Hpi layer of *D. radiodurans* [24])); (2) scanning probe microscopy techniques (e.g., TfsA-GP TfsB-GP of *Tannerella forsythia* [25]); and (3) X-ray scattering techniques (e.g., X-ray crystallography (e.g., SbsB of *Geobacillus stearothermophilus* [26])). Except the latter, all the other methods are only useful to determine the overall topologies of SLPs and the symmetrical associations between the different molecular partners involved in their formation. The X-ray crystallography however is able to get insight into the atomic arrangements between the AAs of the SLP. This kind of data might be very useful for structure-function relationship studies as well as for developing biotechnological applications [27]. Yet, the tendency of SLPs to form two-dimensional lattices is considered as a major issue for growing crystals.

Spectroscopic methods such as nuclear magnetic resonance (NMR) spectroscopy, electron paramagnetic resonance (EPR) spectroscopy (combined with site-directed spin-labeling), and Fourier-transform infrared (FTIR) spectroscopy could also complement the structural and biochemical techniques to study the dynamics of SLPs and their interaction with other molecules (proteins, radionuclides, etc.). Indeed, for example, analyses of the secondary structure of *Lactobacillus* SLPs and their behavior upon heating were studied by combining FTIR and differential scanning calorimetry (DSC) methods [28]. In addition, instrumental methods such as X-ray photoelectron spectroscopy and matrix-assisted laser desorption ionization or electrospray ionization mass spectrometry have been introduced for the analysis of the protein and glycan portions of SLPs ([29, 30] and references therein). Also, immobilized *C. crescentus* S-layers on zincite-coated nanoparticles of iron oxide were investigated using FTIR spectroscopy, powder X-ray diffraction (XRD)—the diffraction pattern is obtained from a powder of the material rather than an individual crystal, AFM and field-emission scanning electron microscope (FESEM) [31]. Recently, Madhurantakam et al. [32] revised the methods employed to analyze the properties and structural characteristics of the S-layer lattice, demonstrating the increase in the usage of X-ray-based methods, spectroscopy, cryo-electron microscopy, and other high-throughput data-processing techniques to study the structure of SLPs during the last two decades.

It goes without saying that theoretical methods, including homology modeling, threading, and *ab initio* methods, cannot substitute experimental techniques to accurately determine the molecular structure of proteins. Nevertheless, even inaccurate, models can be useful especially to evaluate the overall fold of the proteic macromolecule, to map certain properties on molecular surface or to probe the three-dimensional patterns and the spatial repartition of certain AAs.

In this chapter, we present a survey of IRRB S-layers based on literature with a special focus on *D. radiodurans* and SlpA. Moreover, we introduce an automated computational pipeline adapted for the ease of use for the identification and analyses of SLP structures. The proposed pipeline was applied to completely sequenced genomes of previously known IRRB available in the genomes online database (GOLD) [33] and the radioresistant prokaryotes database

(RadioP) [34]. Accordingly, we suggest prospective applications of IRRB SLPs in nanobio-technology for bioremediation of hazardous and radioactive wastes.

2. Survey of S-layer proteins (SLPs) in *Deinococcus radiodurans* R₁

The order of *D. radiodurans* envelope layers and their nature has been investigated in many studies ([8] and references therein). Using electron microscopy, Rothfuss et al. [8] have identified five layers: (1) the inner membrane, (2) the peptidoglycan cell wall, (3) the interstitial layer, (4) Hpi and the backing layer, and (5) the carbohydrate coat. *D. radiodurans* envelope has an unusual structure and composition with the outermost surface of this formation is the “pink envelope” containing carbohydrates, proteins, carotenoid (deinoxanthin [7]), lipids, and most likely the outer membrane [8]. SlpA (DR_2577) and Hpi (DR_2508) are the most abundant components responsible for the envelope maintaining [35]. The S-layer regular topology is distinguished in electron microscopy even when *hpi* gene is altered; however, the deletion of *slpA* results in the incapacity of Hpi to form the hexagonal porous structure on the S-layer outer surface and in losing the integrity of the pink envelope [8].

Fagan and Fairweather [16] estimated that the *C. difficile* S-layer contains up to 500,000 subunits, synthesized at a rate of 140 subunits per second per cell during the exponential growth phase. Several distinct mechanisms have evolved to cope with this high-protein flux. In many Gram-negative species, S-layer secretion relies on a specific type I secretion system; and in some studied Gram-positive bacteria, the secretion of the S-layer precursor is dependent on the accessory Sec secretion system. Interestingly, there is a striking degree of genetic linkage between the genes that encode SLPs and their dedicated secretion systems in many bacteria ([16] and references therein). This genetic linkage was not observed in the case of *D. radiodurans* *slpA* and *hpi* (**Figure 1**).



Figure 1. Gene local context and predicted *Deinococcus radiodurans* R₁ *slpA* and *hpi* operons [36]. Locus tags and abbreviations: DR_2576, putative manganese-dependent inorganic pyrophosphatase; DR_2577, *slpA*; *tgt*, Queuine tRNA-ribosyltransferase; DR_2507, medium-chain fatty-acid-CoA ligase; DR_2508, *hpi*; DR_2509, hypothetical open reading frame.

The S-layer is anchored to the cell surface via non-covalent interactions with cell surface structures, usually with lipopolysaccharides (LPSs) in Gram-negative bacteria and with cell wall polysaccharides in Gram-positive bacteria [14]. For example, in *C. crescentus*, the 225 N-terminal AAs from a total of 1026 residues of RsaA SLP is required for the binding to LPS on the cell surface [16, 37, 38]. Experimental evidence that the surface layer homology (SLH) domains recognize a cell envelope by binding to peptidoglycan was further provided for the

SLPs Sap and EA1 of *B. anthracis* [39, 40], SlpA of *C. thermocellum* [39, 41], and the SLP and cell-wall-associated xylanase of *Thermoanaerobacterium thermosulfurigenes* EM1 [39]. Importantly, it was shown that pure peptidoglycan was unable to bind the SLH domains [39] situated at the N-terminal region of the SLP of *C. crescentus*. However, it recognizes distinct oligosaccharides of the LPS as binding partners [42, 43]. On the other hand, it has been proposed that hydrophobic interactions are responsible for attachment of the S-layer to the outer membrane in the backing layer, as well as for the association of the S-layer units in *D. radiodurans* [44]; while Hpi is involved in *in vivo* cleavage and is closely associated to SlpA. The SLH domain of SlpA was shown to bind deinococcal peptidoglycan-containing cell wall sacculi [45]. Indeed, it has

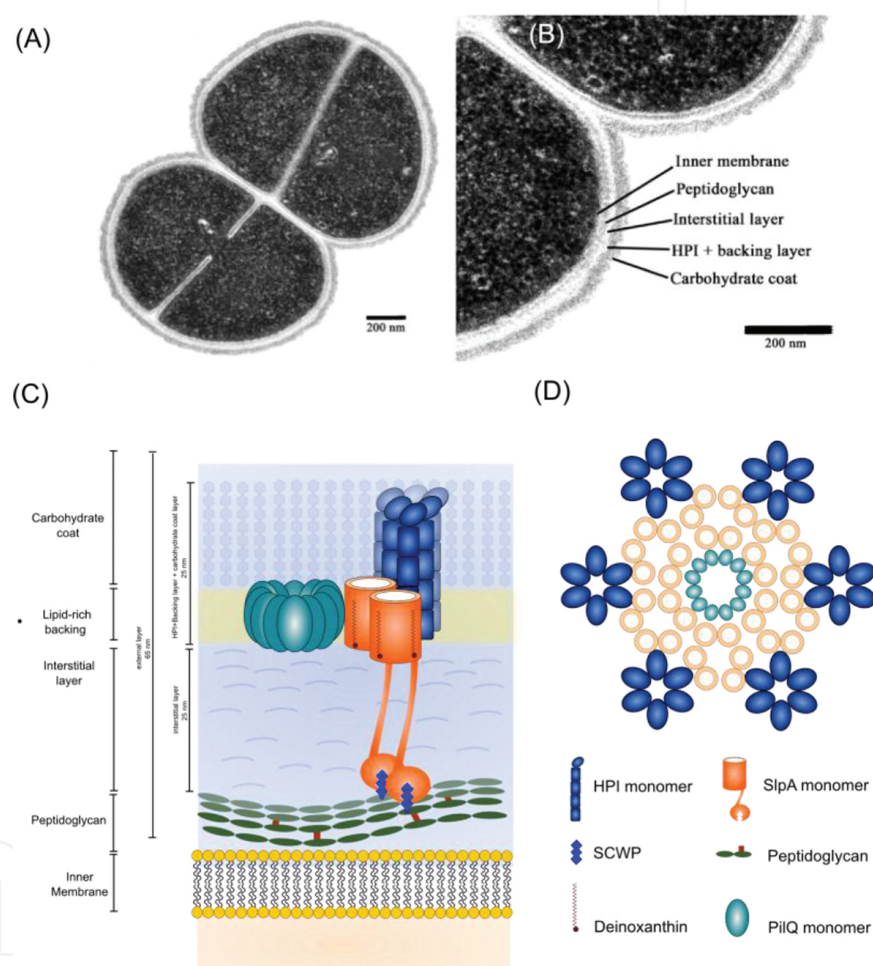


Figure 2. A tentative model of the S-layer of *Deinococcus radiodurans* R₁ cell envelope based on literature (see the text for details). (A) Thin section electron micrograph of *D. radiodurans* tetrad. (B) Magnification of the membrane with indication of different layers (Photos credit (A and B): Prof. Mary E. Lidstrom and co-authors [8], *Frontiers* (www.frontiersin.org) and *Microbiology Journal* (<http://mic.microbiologyresearch.org/content/journal/micro/10.1099/mic.0.28971-0#results-1>)). (C) The five layers in *D. radiodurans* cell envelope [8], PilQ (DR_0774) as a component related with the S-layer [35] and the predicted association between: (i) SlpA and deinococcal peptidoglycan-containing cell wall [45], (ii) SlpA and Hpi [45], and (iii) SlpA and deinoxanthin [7]. The association of SlpA with peptidoglycan on one side and Hpi on the other localizes this protein in the “interstitial” layer of the deinococcal cell wall [45]. (D) The predicted association between the dimeric structure of SlpA and the hexameric structure of Hpi [47]. The blue, orange, and purple shapes represent Hpi, SlpA, and DR_0774 (secretin), respectively.

been previously determined that the backing layer of the pink envelope, rather than the Hpi layer, provides the rigidity and the curvature of the cell envelope [46], suggesting that the SlpA protein interacts with the backing layer [8].

Based on structural, functional, and proteomic data collected from literature, we propose in this chapter a tentative model describing the interaction between SlpA, deinoxanthin, Hpi, and PilQ (DR_0774) within *D. radiodurans* cell envelope (**Figure 2**).

The description of *D. radiodurans* SlpA and Hpi proteic network and domains is vital to our understanding of the function(s) of SLPs in this extremophile. **Figure 3** shows *D. radiodurans* Hpi and SlpA known and potential functional partners predicted using the STRING database available at <http://string-db.org/> [48].

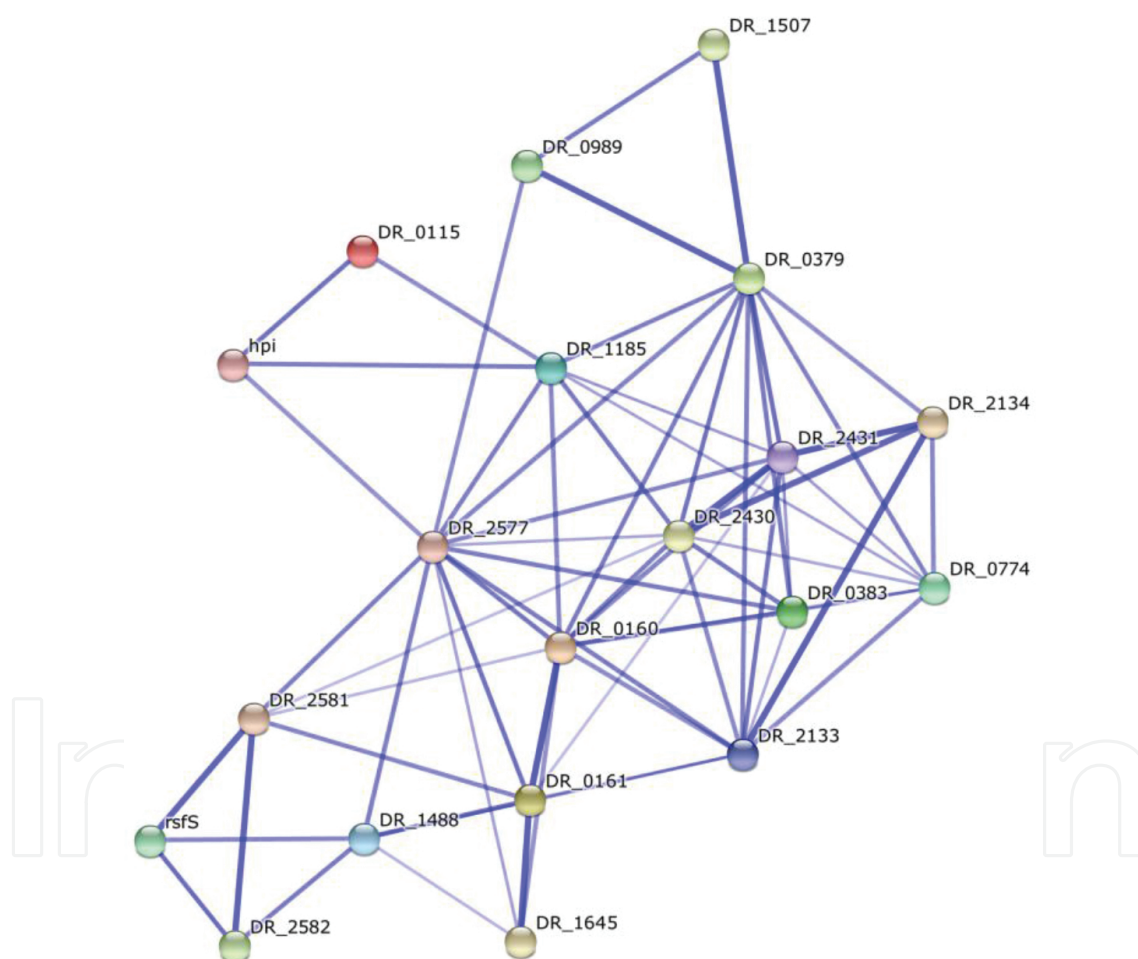


Figure 3. Network of Hpi (DR_2508) and SlpA (DR_2577) predicted functional partners. Prediction methods are based on neighborhood, co-expression, gene fusion, experiments, co-occurrence, databases or text mining via the STRING database [48] and pertinent literature [35, 45].

Proteic domains of *D. radiodurans* S-layer and S-layer-like proteins, presented in **Figure 3**, were investigated using the SMART database [49], available at <http://smart.embl-heidelberg.de/>, and listed in **Figure 4**. Several proteins showed the presence of an SLH domain.

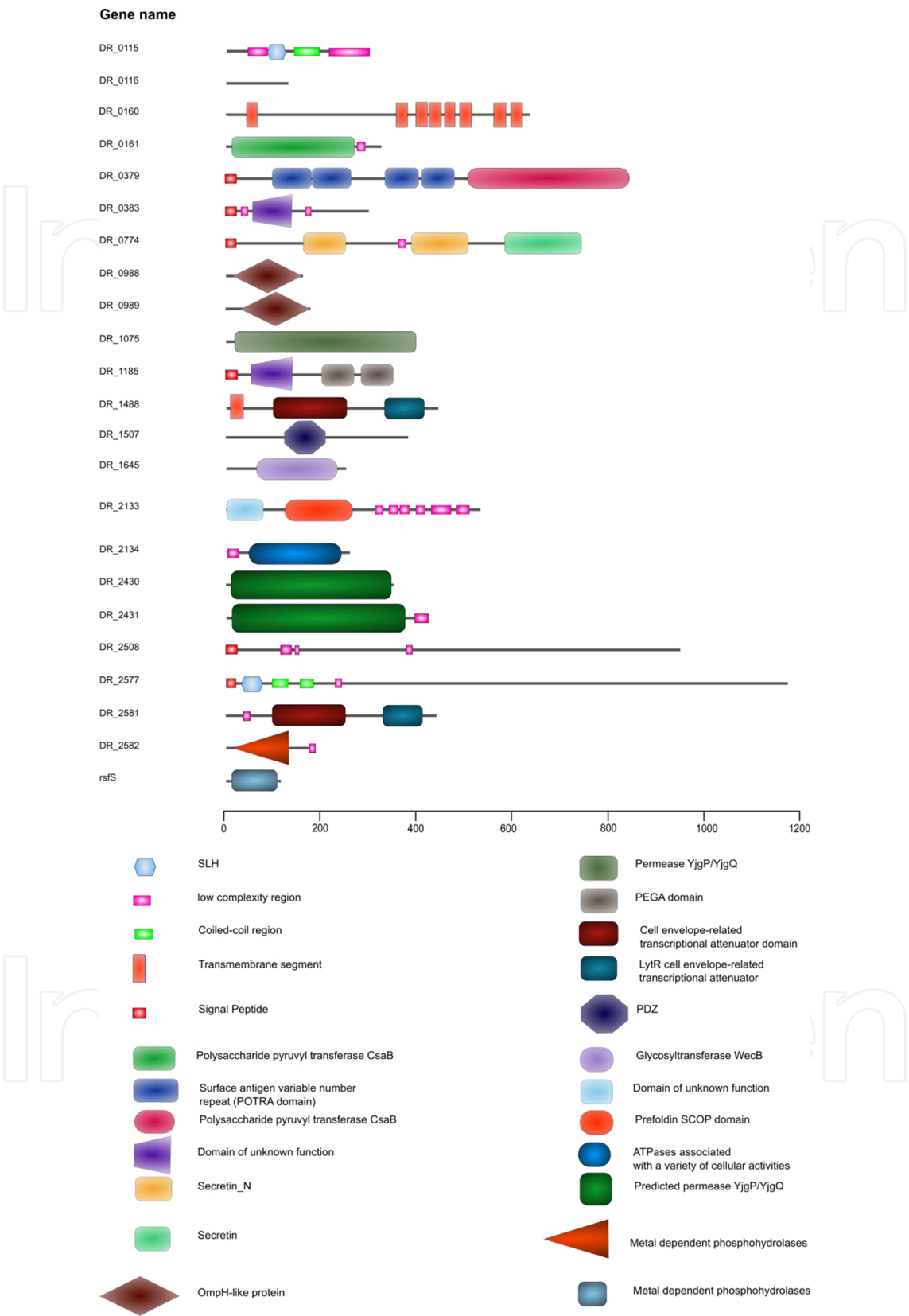


Figure 4. Proteic domains of *Deinococcus radiodurans* S-layer and S-layer-like proteins.

3. Automated computational pipeline for identification and analyses of S-layers in ionizing-radiation-resistant bacteria (IRRB)

IRRB were previously regrouped in the RadioP database [34]. In *Deinococcus geothermalis* and *D. radiodurans*, SLP is among the top 20 predicted highly expressed (PHX) genes; whereas *K. radiotolerans* and *Rubrobacter xylanophilus* have no similar genes [50]. In this work, the bioinformatics pipeline, as illustrated in **Figure 5**, was developed to perform an integrated analysis of IRRB SLPs (domains, interaction network, orthologs, etc.) including the prediction of the exposed residues in their structures to be explored for a potential use of IRRB (e.g., nanobiotechnology for bioremediation of radioactive waste). SlpA and Hpi were taken as working examples.

In an attempt to identify SLP (highlighted in **Figures 3 and 4**) orthologs in the genomes of IRRB species for which D_{10} is known [1, 34, 51], computational analyses using BLASTP program [52] were performed based on the best reciprocal hits (BRH) approach (e -value threshold $\leq 1e^{-05}$). While *D. radiodurans* SLP SlpA has orthologs in related IRRB species, Hpi protein did not show any significant similarity with proteins in other related completely sequenced IRRB using our submentioned approach. As *D. radiodurans* Hpi lacks homology to any predicted peptide from other genomes of similar species, *hpi* can be considered as an orphan gene. In addition, analysis of phyletic similarity patterns—patterns of presence or absence, using similarity measures, of

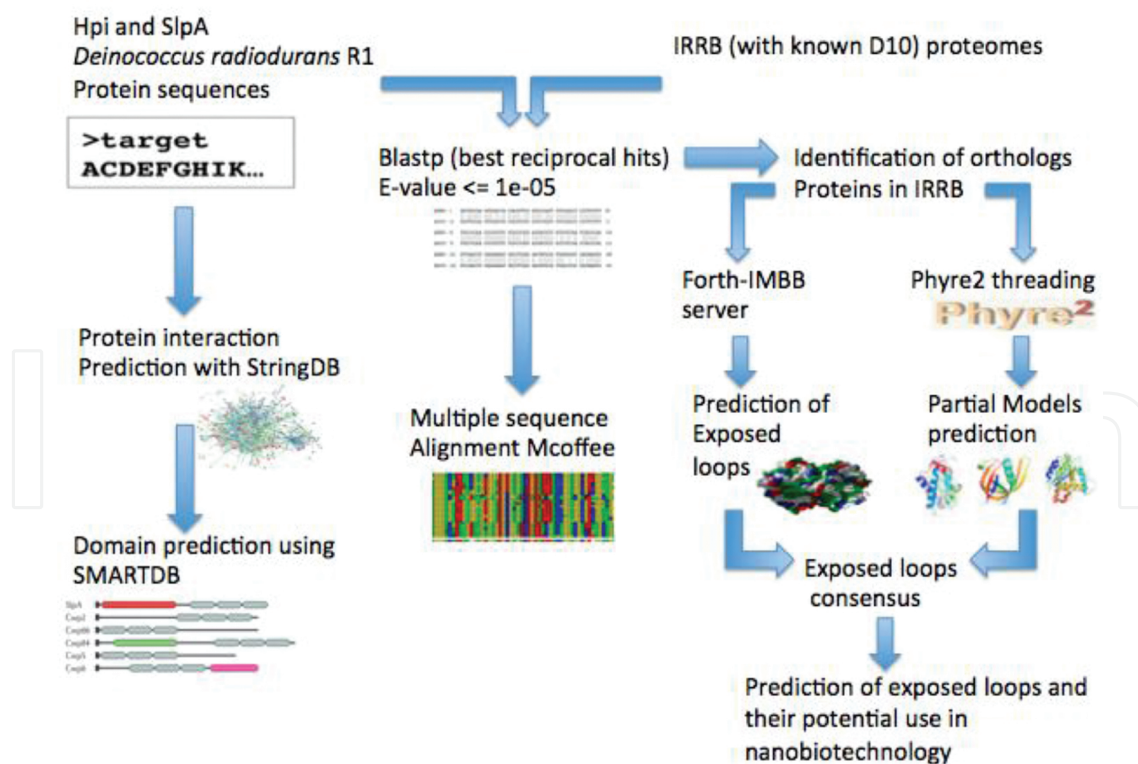


Figure 5. Computational pipeline for an integrated analysis including structural predictions of S-layer proteins (SLPs) as illustrated with *Deinococcus radiodurans* R₁ SlpA and Hpi.

given proteins in the analyzed proteomes—suggests that several IRRB proteins might be key ancestral surface-layer players as they are not taxonomically restricted (**Figure 6**).

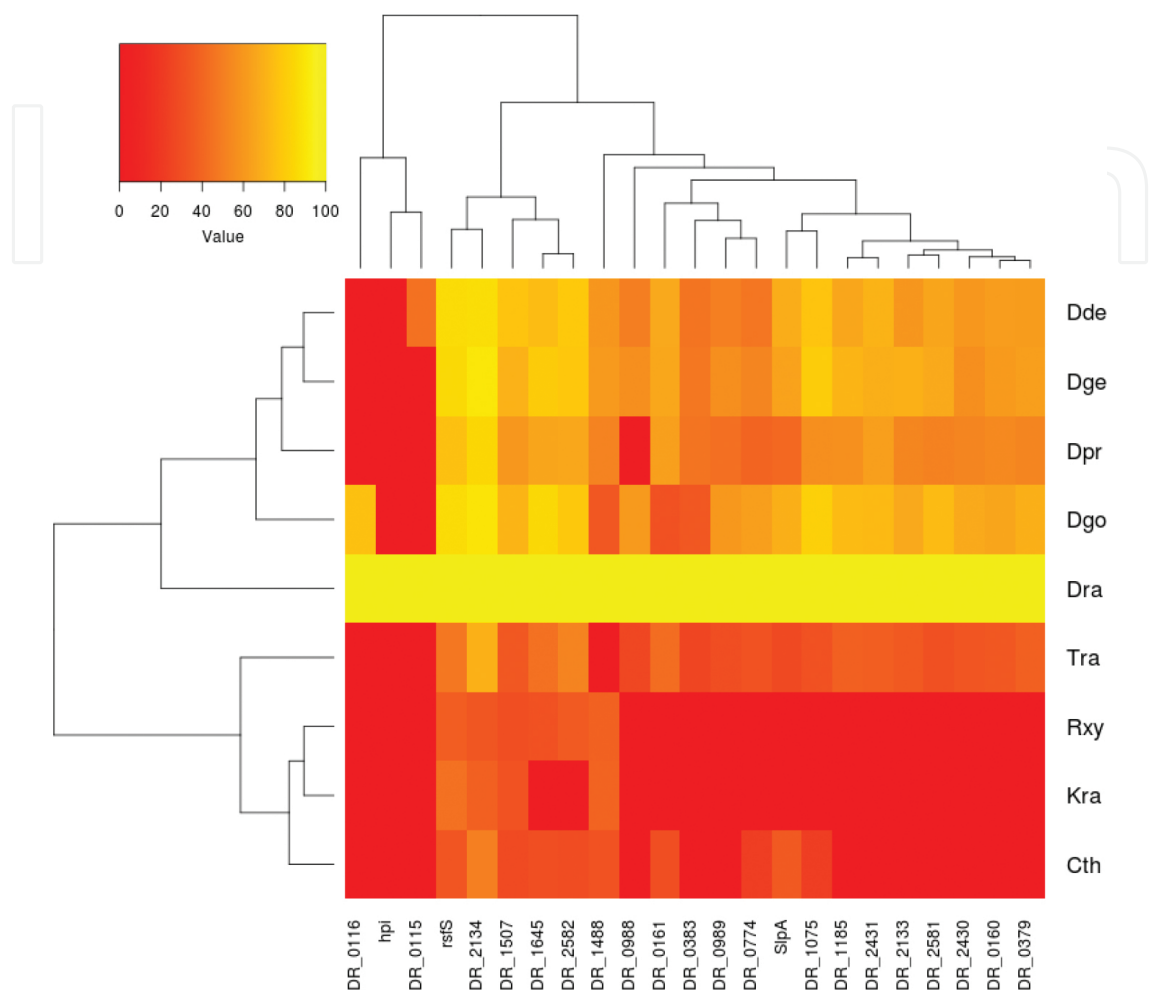


Figure 6. Heatmap showing phyletic similarity patterns of *Deinococcus radiodurans* R₁ SlpA-Hpi-associated proteins in analyzed IRRB proteomes. *D. radiodurans* proteins were chosen based on STRING interactions with SlpA and Hpi and pertinent literature (see **Figures 3** and **4**, and text for details). Patterns were derived from best reciprocal hits BLASTP results. Colors indicate phyletic similarity measures. The species names are abbreviated as follows: Dde, *Deinococcus deserti*; Dge, *Deinococcus geothermalis*; Dpr, *Deinococcus proteolyticus*; Dgo, *Deinococcus gobiensis*; Dra, *Deinococcus radiodurans*; Tra, *Truepera radiotolerans*; Rxy, *Rubrobacter xylophilus*; Kra, *Kineococcus radiotolerans*; Cth, *Chroococcidiopsis thermalis*.

Based on the BRH approach, a *D. radiodurans* SlpA ortholog could not be confidently identified in the actinobacteria *K. radiotolerans*. To further validate this result, the conserved *D. radiodurans* SlpA SLH domain sequence (AAs 32 to 75) was extracted via the SMART (Simple Modular Architecture Research Tool, smart.embl-heidelberg.de) web server [49]. Subsequently, an iterative (five iterations) PSI-BLAST [53] analysis against a specific database (*K. radiotolerans* (taxid:131568)) did not reveal any hit above the 0.005 threshold. Indeed, a statistically non-significant similarity (expect value of ~0.44) to a peptidase M20 (441 aa, WP_011981201) was observed for the first hit. The same analysis realized with *Kineococcus* group sequences (taxid:

83778) as a database identified an hypothetical ortholog (320 AAs, WP_056676327) from *Angustibacter* sp. Root456 with four SLH domains, as a statistically significant (expect value of $\sim 2e^{-15}$) hit. Further investigations should be done on genomes of “SLH-negative” IRRB, such as *K. radiotolerans*, using sensitive methods for sequence similarity detection of highly diverged homologs.

The multiple sequence alignment of SlpA orthologous proteins using M-Coffee program [54] showed that conserved AAs between IRRB species (unpublished data) are extremely rare and can be summarized in a high sequence identities limited to the N-terminal region probably corresponding to the SLH domain, which is responsible for binding of the S-layer subunits to the underlying cell envelope layer [17]. The middle and C-terminal S-layers parts, comprising domains involved in the self-assembly process and exposed inside the pores and on the S-layer surface, showed very low sequence similarities.

Domain architecture of *D. radiodurans* SlpA and of its statistically significant hits were investigated using SMART database [49]. The structure of *D. radiodurans* SlpA vindicates previous results—SLH domain(s) [21] at the N-terminal part of many SLPs [41]—that all SlpA sequences display at least one SLH domain (**Figure 7**).

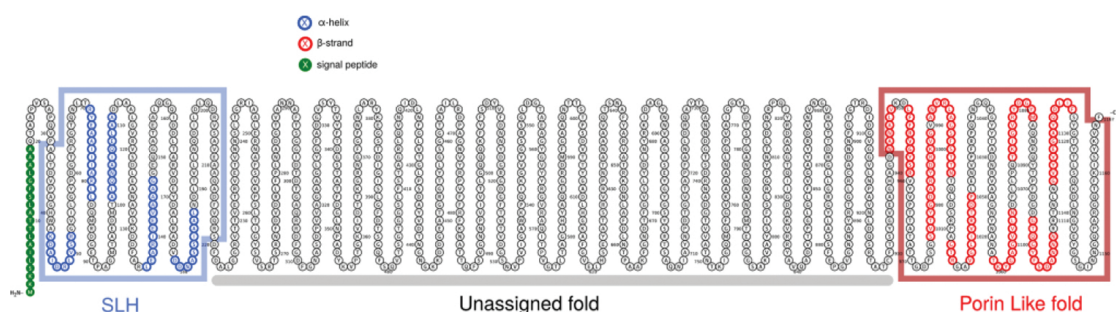


Figure 7. Structural domain topology of *Deinococcus radiodurans* R₁ SlpA predicted by the Phyre2 web server [55].

Only 35% of the total sequence of the SlpA protein was assigned to a protein fold without counting the signal peptide predicted by SignalP server [56]. There are two main protein segments which were modeled with high degree of confidence returned by Phyre2 server [55].

The first segment corresponds to the SLH domain (99.6% degree of confidence) at the N-terminal portion of the sequence and was built based on the *B. anthracis* homologous protein domain. The domain adopts the form of a pseudo-trimer presenting a helix-bundle fold. A central groove of the domain was previously proposed as the binding site of the secondary cell wall polysaccharide (SCWP) molecules [57].

The second segment corresponds to C-terminal of SlpA that was associated with a β -barrel-like fold, typical to porin structure (see **Figure 7**), with a degree of confidence of 88.4%. In fact, it has been shown that the β -barrel assembly machinery (BAM) complex [58] is required for the assembly of SlpA from *Thermus thermophilus* HB27 [59] a closely related bacteria to *D. radiodurans*. Indeed, the signal sequence responsible for the efficient binding of main protein from the BAM machinery to SlpA was also found in *D. radiodurans*. In particular, the highly

conserved last phenylalanine (Phe/F) residue of the C-terminal is required for the protein-protein interaction to ensure the proper folding of SlpA. Mutants of *T. thermophilus* lacking the terminal Phe of SlpA showed defective folding of the SlpA protein that was more sensitive to proteases than in a wild-type strain [59]. The amphipathic character of the β strands from the C-terminal segment supports also the presence of the β -barrel-fold type. Phylogenetic relationship between porins and S-layer has been already suggested and was supported by the electron microscopy imaging from *T. thermophilus* S-layer [60, 61].

The threading prediction was also applied for the constructed sequences set of IRRB species (Figure 8).

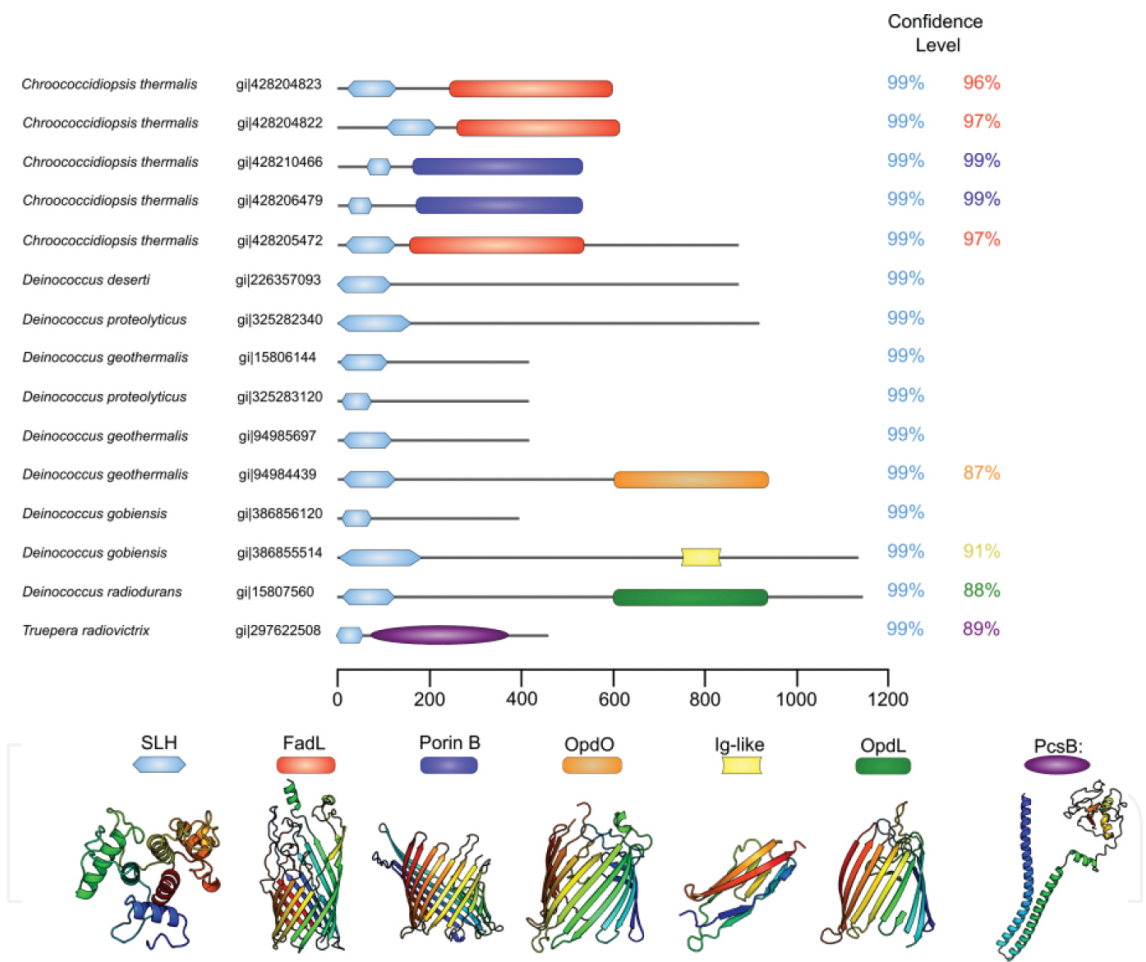


Figure 8. Prediction of the structures of multiple SlpA proteins from different radioresistant bacteria using Phyre2 server. The confidence level represents the probability (from 0 to 100%) that the match between the submitted sequence and the template used to generate the model is weak/strong. In the case of *D. radiodurans*, for example, the template used is the structure of OpdL protein (PDB code: 2Y0H). We reported only the structural domains with more than 90% of confidence or with less than 90% but with extended range over the protein sequence. Each confidence level is associated with one domain highlighted with the same color.

The first information to notice is the high conservation of the SLH domain in all taxa which is in concordance with previous findings using sequence analysis tools [41, 62]. However, the

length of the SLH domain differs and this is due to a variation in the numbers of the SARP subdomain units even among paralogs (e.g., *Chroococcidiopsis thermalis* and *Deinococcus proteolyticus*). This result suggests that the length of SlpA SLH domains does not affect its binding to the peptidoglycan layer.

Also, it was observed that the SlpA presents different folding categories for the non-SLH segments. This result suggests that IRRB SLPs have evolved different molecule preferences and specific biological functions although evolution of molecule preferences does not necessarily follow proteic divergence. In all the cases, the Phyre2 server succeeded to model either one or two structural domains for the orthologous sequences. Among them, six does not present any structural assignment except for the SLH domain. Except for *Deinococcus gobiensis* (gi|386855514), all domains are assigned to a bacterial porin like structure built by the server using different templates. Among studied IRRB species, *Trueperia radiovictrix* ($D_{10} > 5$ kGy [63]) is the only one with SlpA non-SLH domain presenting elusively an all α -fold type. Eight sequences showed an all β -barrel fold type for this non-SLH domain. In this context, it is important to note that previous findings have pointed out that Hpi contains a β -strand rich region [64]. Moreover, the main secondary structure of the domain PEGA (e.g., in DR_1185)—found in both archaea and bacteria and presenting similarity to SLPs—is predicted to be β -strands [65]. Taken together, these observations strongly suggest that the β -barrel fold type is “under positive selection” within the non-SLH domain of SLPs.

Based on the proposed model, it should be emphasized that the C-terminal part of the protein including the region with no assigned fold is the most interesting part being probably the outermost segment of the SLP (unpublished results). The orientation of the protein toward the outer membrane is reported in **Figure 8**. The residues fulfilling the criteria to chelate radionuclides (exposed, charged and forming structural clusters) generated by our pipeline are highlighted in the next section.

4. Prospective applications of ionizing-radiation-resistant bacteria (IRRB) S-layers in nanobiotechnology for bioremediation of hazardous and radioactive wastes

Many protocols related to nanobiotechnology with SLPs were previously highlighted by Schuster et al. [66]. Indeed, SLPs possess mesmerizing features that have attracted attention for their various promising applications as building blocks in nanobiotechnology (1–100 nm) for bioremediation of hazardous and radioactive wastes:

1. self-assembly *in vivo* and *in vitro* into crystalline arrays on many surfaces ([67] and references therein);
2. highly repetitive surface structures—oblique (p1, p2), square (p4) or hexagonal (p3, p6) array structures—with nanometric lattice spacing with different sizes (center-to-center spacing: 3–30 nm; thickness: 5–10 nm) [17];

3. enhanced properties (e.g., optical nonlinearity) suitable for bottom-up fabrication of novel types of active nanoelectronic devices ([68] and references therein);
4. localization of functional proteins at cellular surface [45];
5. negative charges and strong interaction with cations ([67] and references therein);
6. binding noble metal ions and cleaning up of uranium contaminated soils and waters with selective and reversible binding of high amounts of U (up to 20 mg U/g protein), Cu, Pb, Al, and Cd ([12] and references therein); and
7. diverseness (e.g., position of SLH domains).

Bacterial interactions with uranium have been documented extensively ([12, 69] and references therein): (i) biosorption and bioaccumulation; (ii) biotransformation of organic and inorganic uranium complexes; and (iii) enzymatically catalyzed reduction of U(VI) to U(IV), resulting in the precipitation as uraninite (UO₂). To the best of our knowledge, the molecular interaction of uranium with an SLP has been reported only for *L. sphaericus* JG-A12 (also known as *B. sphaericus* JG-A12) isolated from a uranium mining waste pile [12, 70]. The percentage AA identity between the known S-layer proteins of *B. sphaericus* strains was shown to be between 71 and 98% for the N-terminal parts and 20 and 87% for the C-terminal segments [71]. Interestingly, ortholog of *D. radiodurans* SlpA in *L. sphaericus* (*e*-value = $7e^{-08}$, 1258 aa, WP_010861478.1, hypothetical protein) shows three SLH domains at its C-terminal as depicted in **Figure 9**.

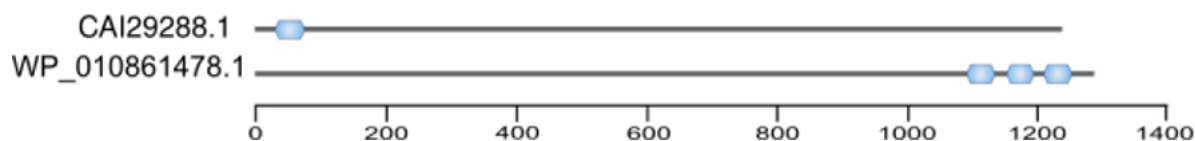


Figure 9. Surface layer homology (SLH) domains (blue shapes) at the N-terminal and C-terminal of two S-layer proteins (SLPs) of *Lysinibacillus sphaericus* JG-A12.

However, there remains the question of which and how specific SLPs AA sites interact with actinides, particularly uranium? In general, the relevant functional groups involved in the interaction between bacteria and metals are reported to be –COOH, –OH, –NH₂, and –PO₄, etc. [72, 73]. The segments at the outermost surface of SLPs are harboring –COOH, –OH, and –NH₂ groups [74]. In addition, using analyses of post-translational modifications, it was highlighted that SLPs can be phosphorylated [10]. Moreover, it was observed that, at acidic pH (4.3), SLPs formed complexes with U(VI), where uranium (U(VI)) is coordinated to carboxyl groups, in a bidentate binding fashion, and to phosphate groups in a monodentate binding mode [10–12]. Using our pipeline, exposed residues of *D. radiodurans* SlpA were predicted from the model we generated with Phyre2 [55]—[YVPTTATATTGDFSG], [TQLDSRPA], [YTADNRVAAGNYNANA], [AQNRQYTPFDGD], [SYG], and [KVN]; and interactions with uranium were modeled based on previous literature [10–12] (**Figure 10**).

This model (**Figure 10**) highlights the importance of the acidic residues (aspartic acid (Asp/D) and glutamic acid (Glu/E)) and the phosphorylation of the SLPs which can be carried at serine

(Ser/S) and threonine (Thr/T) groups. In this context, it is important to remember that the interaction between uranium and SLPs is dependent on the oxidation state of the actinide which in turn depends on the extracellular pH. Indeed, previously, the speciation of uranium associated with *Idiomarina loihiensis* strain MAH1 was shown to depend mainly on the pH [11]. Taking together, the S-layer could serve as a binding matrix to introduce new functional properties like metal sorption [75].

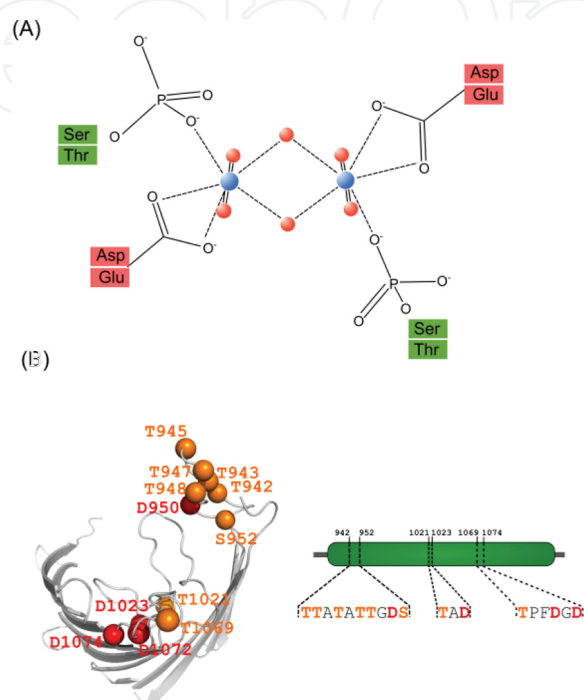


Figure 10. Model for the interaction between an S-layer protein (SLP) and an actinide (uranium) at pH 4.3 [10–12]. (A) Model of coordination between uranyl $[UO_2]^{2+}$ (red: O, blue: uranium) with residues (aspartic acid (Asp/D), glutamic acid (Glu/E), serine (Ser/S) and threonine (Thr/T)) from *Bacillus sphaericus* SLP as proposed by Merroun et al. [10]. (B) Mapping of negatively charged (red) and putatively phosphorylated Ser and Thr residues (orange) on the outermost exposed segments of SlpA predicted using the presented workflow. The residues are indicated by spheres corresponding to C α atom. The model is truncated because the structure was not fully predicted by Phyre2 [55].

There is plenty of room for improvement of the proposed computational pipeline to enhance its predictive power of SLPs within IRRB. Text mining, a careful analysis of the sequence data, and structure prediction methods were revealed to be useful in probing pertinent functional groups of SLPs. Overall, this chapter is expected to incite *in vitro* research that might elucidate various aspects related to IRRB SLPs and bioremediation of hazardous and radioactive wastes.

Acknowledgements

This work was supported by the Tunisian National Center for Nuclear Sciences and Technology (CNSTN), the Pasteur Institute (Tunis), grant from Actions Concertées Inter-Pasteuriennes (ACIP A11-2008. Ref: YC/MJ/KV/AS/N°444), and the Ministry of Higher Education and

Scientific Research in Tunisia. Authors would like to thank Cherif BenHamda (Institute Pasteur, Tunisia), for his assistance, and are grateful to other colleagues who shared their feedbacks and revisions on the manuscript. Dr. Ghedira and Dr. Othman equally contributed to this chapter. In addition, the authors thank the InTech team for their excellent editorial assistance.

Author details

Kaïs Ghedira^{1*}, Houcemeddine Othman², Taieb Saied³, Zouhair Majdi Baccar⁴, Faouzi Hosni⁵, Ahmed Hichem Hamzaoui⁶, Kaliannan Thamaraiselvi⁷, Hafedh Abdelmelek⁸, Najet Srairi-Abid², Maria Clara Costa⁹ and Haïtham Sghaier^{5,10*}

*Address all correspondence to: kais.ghedira@pasteur.rns.tn; sghaier.haitham@gmail.com; haitham.sghaier@cnstn.rnrt.tn

1 Laboratory of Bioinformatics, Mathematics and Statistics, Pasteur Institute of Tunisia, University of Tunis, El Manar, Tunisia

2 Laboratory of Venoms and Therapeutic Biomolecules (LR11IPT08), Pasteur Institute of Tunisia, University of Tunis, El Manar, Tunisia

3 Laboratory of Analytic Chemistry and Electrochemistry, Department of Chemistry, Faculty of Science, University of Tunis, El Manar, Tunisia

4 Nanobioengineering Group, National Institute for Research and Physicochemical Analysis (INRAP), Sidi Thabet Technopark, Ariana, Tunisia

5 Laboratory of Energy and Matter for Development of Nuclear Sciences, National Center for Nuclear Sciences and Technology (CNSTN), Sidi Thabet Technopark, Ariana, Tunisia

6 Laboratory of Valorisation of Materials, CNRSM, Hammam-Lif, Tunisia

7 Laboratory of Molecular Bioremediation and Nanobiotechnology, Department of Environmental Biotechnology, Bharathidasan University, Tiruchirappalli, India

8 Faculty of Sciences of Bizerte, Carthage University, Jarzouna, Tunisia

9 Department of Chemistry and Pharmacy, Centre of Marine Sciences, Faculty of Sciences and Technology, University of Algarve, Faro, Portugal

10 Laboratory of Biotechnology and Nuclear Technology (LR16CNSTN01) and Laboratory of Biotechnology and Bio-Geo Resources Valorization (LR11ES31), Sidi Thabet Technopark, Tunisia

References

- [1] Sghaier H, Ghedira K, Benkahla A, Barkallah I: Basal DNA repair machinery is subject to positive selection in ionizing-radiation-resistant bacteria. *BMC Genomics* 2008, 9:297.
- [2] Bagwell CE, Bhat S, Hawkins GM, Smith BW, Biswas T, Hoover TR, Saunders E, Han CS, Tsodikov OV, Shimkets LJ: Survival in nuclear waste, extreme resistance, and potential applications gleaned from the genome sequence of *Kineococcus radiotolerans* SRS30216. *PLoS One* 2008, 3(12):e3878.
- [3] Daly MJ: Engineering radiation-resistant bacteria for environmental biotechnology. *Curr Opin Biotechnol* 2000, 11(3):280–285.
- [4] Brim H, McFarlan SC, Fredrickson JK, Minton KW, Zhai M, Wackett LP, Daly MJ: Engineering *Deinococcus radiodurans* for metal remediation in radioactive mixed waste environments. *Nat Biotechnol* 2000, 18(1):85–90.
- [5] Lange CC, Wackett LP, Minton KW, Daly MJ: Engineering a recombinant *Deinococcus radiodurans* for organopollutant degradation in radioactive mixed waste environments. *Nat Biotechnol* 1998, 16(10):929–933.
- [6] Ruggiero CE, Boukhalfa H, Forsythe JH, Lack JG, Hersman LE, Neu MP: Actinide and metal toxicity to prospective bioremediation bacteria. *Environ Microbiol* 2005, 7(1):88–97.
- [7] Farci D, Chavdar S, Tramontano E, Piano D: The S-layer protein DR_2577 binds deinoxanthin and under desiccation conditions protects against UV-radiation in *Deinococcus radiodurans*. *Front Microbiol* 2016, 7. doi: 10.3389/fmicb.2016.00155. eCollection 2016.
- [8] Rothfuss H, Lara JC, Schmid AK, Lidstrom ME: Involvement of the S-layer proteins Hpi and SlpA in the maintenance of cell envelope integrity in *Deinococcus radiodurans* R₁. *Microbiology* 2006, 152(Pt 9):2779–2787.
- [9] Lloyd JR: Microbial reduction of metals and radionuclides. *FEMS Microbiol Rev* 2003, 27(2–3):411–425.
- [10] Merroun ML, Raff J, Rossberg A, Hennig C, Reich T, Selenska-Pobell S: Complexation of uranium by cells and S-layer sheets of *Bacillus sphaericus* JG-A12. *Appl Environ Microbiol* 2005, 71(9):5532–5543.
- [11] Morcillo F, Gonzalez-Munoz MT, Reitz T, Romero-Gonzalez ME, Arias JM, Merroun ML: Biosorption and biomineralization of U(VI) by the marine bacterium *Idiomarina loihiensis* MAH1: effect of background electrolyte and pH. *PLoS One* 2014, 9(3):e91305.
- [12] Pollmann K, Raff J, Merroun M, Fahmy K, Selenska-Pobell S: Metal binding by bacteria from uranium mining waste piles and its technological applications. *Biotechnol Adv* 2006, 24(1):58–68.

- [13] Gentner NE, Mitchel RE: Ionizing radiation-induced release of a cell surface nuclease from *Micrococcus radiodurans*. *Radiat Res* 1975, 61(2):204–215.
- [14] Sára M, Sleytr UB: S-Layer proteins. *J Bacteriol* 2000, 182(4):859–868.
- [15] Sleytr UB, Messner P, Pum D, Sara M: Crystalline bacterial cell surface layers. *Mol Microbiol* 1993, 10(5):911–916.
- [16] Fagan RP, Fairweather NF: Biogenesis and functions of bacterial S-layers. *Nat Rev Microbiol* 2014, 12(3):211–222.
- [17] Sleytr UB, Beveridge TJ: Bacterial S-layers. *Trends Microbiol* 1999, 7(6):253–260.
- [18] Möschl A, Schäffer C, Sleytr UB, Messner P, Christian R, Schulz G: Characterization of the S-layer glycoproteins of two lactobacilli. In: *Advances in Bacterial Paracrystalline Surface Layers*. Edited by Beveridge TJ KS, Vol. 252. New York: Plenum Press; 1993: pp. 281–284.
- [19] Wugeditsch T, Zachara NE, Puchberger M, Kosma P, Gooley AA, Messner P: Structural heterogeneity in the core oligosaccharide of the S-layer glycoprotein from *Aneurinibacillus thermoaerophilus* DSM 10155. *Glycobiology* 1999, 9(8):787–795.
- [20] Houwink AL: A macromolecular mono-layer in the cell wall of *Spirillum spec.* *Biochim Biophys Acta* 1953, 10(3):360–366.
- [21] Lupas A, Engelhardt H, Peters J, Santarius U, Volker S, Baumeister W: Domain structure of the *Acetogenium kivui* surface layer revealed by electron crystallography and sequence analysis. *J Bacteriol* 1994, 176(5):1224–1233.
- [22] Sleytr UB, Messner P, Pum D, Sara M: Crystalline bacterial cell surface layers (s layers): from supramolecular cell structure to biomimetics and nanotechnology. *Angew Chem Int Ed Engl* 1999, 38(8):1034–1054.
- [23] Chung S, Shin SH, Bertozzi CR, De Yoreo JJ: Self-catalyzed growth of S layers via an amorphous-to-crystalline transition limited by folding kinetics. *Proc Natl Acad Sci U S A* 2010, 107(38):16536–16541.
- [24] Lister TE, Pinhero PJ: *In vivo* atomic force microscopy of surface proteins on *Deinococcus radiodurans*. *Langmuir* 2001, 17:2624–2628.
- [25] Oh YJ, Sekot G, Duman M, Chtcheglova L, Messner P, Peterlik H, Schaffer C, Hinderdorfer P: Characterizing the S-layer structure and anti-S-layer antibody recognition on intact *Tannerella forsythia* cells by scanning probe microscopy and small angle X-ray scattering. *J Mol Recognit* 2013, 26(11):542–549.
- [26] Baranova E, Fronzes R, Garcia-Pino A, Van Gerven N, Papapostolou D, Pehau-Arnaudet G, Pardon E, Steyaert J, Howorka S, Remaut H: SbsB structure and lattice reconstruction unveil Ca^{2+} triggered S-layer assembly. *Nature* 2012, 487(7405):119–122.

- [27] Pavkov-Keller T, Howorka S, Keller W: The structure of bacterial S-layer proteins. *Prog Mol Biol Transl Sci* 2011, 103:73–130.
- [28] Mobili P, Serradell Mde L, Trejo SA, Aviles Puigvert FX, Abraham AG, De Antoni GL: Heterogeneity of S-layer proteins from aggregating and non-aggregating *Lactobacillus kefir* strains. *Antonie Van Leeuwenhoek* 2009, 95(4):363–372.
- [29] Messner P: Bacterial glycoproteins. *Glycoconj J* 1997, 14(1):3–11.
- [30] Messner P, Allmaier G, Schaffer C, Wugeditsch T, Lortal S, König H, Niemetz R, Dorner M: Biochemistry of S-layers. *FEMS Microbiol Rev* 1997, 20(1–2):25–46.
- [31] Habibi N: Immobilization of bacterial S-layer proteins from *Caulobacter crescentus* on iron oxide-based nanocomposite: synthesis and spectroscopic characterization of zincite-coated Fe₂O₃ nanoparticles. *Spectrochim Acta A Mol Biomol Spectrosc* 2014, 125:359–362.
- [32] Madhurantakam C, Howorka S, Remaut H: S-layer structure in bacteria and archaea. In: *Nanomicrobiology*. Edited by Barton LLea. New York: Springer Science+Business Media; 2014.
- [33] Reddy TB, Thomas AD, Stamatis D, Bertsch J, Isbandi M, Jansson J, Mallajosyula J, Pagani I, Lobos EA, Kyripides NC: The Genomes OnLine Database (GOLD) v.5: a metadata management system based on a four level (meta)genome project classification. *Nucleic Acids Res* 2015, 43(Database issue):D1099–D1106.
- [34] Benhamda C, Benkahla A, Ben Miled S, Ouled-Haddar H, Montero-Calasanz MC, Gtari M, Cherif A, Hofner B, Ghedira K, Sghaier H: The RadioP1: an integrative web resource for radioresistant prokaryotes. In: *Current Topics in Ionizing Radiation Research 2*. Edited by Nenoï M. Croatia: InTech; 2015.
- [35] Farci D, Bowler MW, Kirkpatrick J, McSweeney S, Tramontano E, Piano D: New features of the cell wall of the radio-resistant bacterium *Deinococcus radiodurans*. *Biochim Biophys Acta* 2014, 1838(7):1978–1984.
- [36] Romero PR, Karp PD: Using functional and organizational information to improve genome-wide computational prediction of transcription units on pathway-genome databases. *Bioinformatics* 2004, 20(5):709–717.
- [37] Awram P, Smit J: Identification of lipopolysaccharide O antigen synthesis genes required for attachment of the S-layer of *Caulobacter crescentus*. *Microbiology* 2001, 147(Pt 6):1451–1460.
- [38] Ford MJ, Nomellini JF, Smit J: S-layer anchoring and localization of an S-layer-associated protease in *Caulobacter crescentus*. *J Bacteriol* 2007, 189(6):2226–2237.
- [39] Chauvaux S, Matuschek M, Beguin P: Distinct affinity of binding sites for S-layer homologous domains in *Clostridium thermocellum* and *Bacillus anthracis* cell envelopes. *J Bacteriol* 1999, 181(8):2455–2458.

- [40] Mesnage S, Tosi-Couture E, Fouet A: Production and cell surface anchoring of functional fusions between the SLH motifs of the *Bacillus anthracis* S-layer proteins and the *Bacillus subtilis* levansucrase. *Mol Microbiol* 1999, 31(3):927–936.
- [41] Lemaire M, Miras I, Gounon P, Beguin P: Identification of a region responsible for binding to the cell wall within the S-layer protein of *Clostridium thermocellum*. *Microbiology* 1998, 144 (Pt 1):211–217.
- [42] Bingle WH, Nomellini JF, Smit J: Linker mutagenesis of the *Caulobacter crescentus* S-layer protein: toward a definition of an N-terminal anchoring region and a C-terminal secretion signal and the potential for heterologous protein secretion. *J Bacteriol* 1997, 179(3):601–611.
- [43] Walker SG, Karunaratne DN, Ravenscroft N, Smit J: Characterization of mutants of *Caulobacter crescentus* defective in surface attachment of the paracrystalline surface layer. *J Bacteriol* 1994, 176(20):6312–6323.
- [44] Thompson BG, Murray RGE: The association of the surface array and the outer membrane of *Deinococcus radiodurans*. *Can J Microbiol* 1982, 28:1081–1088.
- [45] Misra CS, Basu B, Apte SK: Surface (S)-layer proteins of *Deinococcus radiodurans* and their utility as vehicles for surface localization of functional proteins. *Biochim Biophys Acta* 2015, 1848:3181–3187.
- [46] Baumeister W, Kubler O, Zingsheim HP: The structure of the cell envelope of *Micrococcus radiodurans* as revealed by metal shadowing and decoration. *J Ultrastruct Res* 1981, 75(1):60–71.
- [47] Farci D, Bowler MW, Esposito F, McSweeney S, Tramontano E, Piano D: Purification and characterization of DR_2577 (SlpA) a major S-layer protein from *Deinococcus radiodurans*. *Front Microbiol* 2015, 6:414.
- [48] Szklarczyk D, Franceschini A, Wyder S, Forslund K, Heller D, Huerta-Cepas J, Simonovic M, Roth A, Santos A, Tsafou KP et al: STRING v10: protein-protein interaction networks, integrated over the tree of life. *Nucleic Acids Res* 2015, 43(Database issue):D447–D452.
- [49] Letunic I, Doerks T, Bork P: SMART: recent updates, new developments and status in 2015. *Nucleic Acids Res* 2015, 43(Database issue):D257–D260.
- [50] Gao N, Ma B-G, Zhang Y-S, Song Q, Chen L-L, Zhang H-Y: Gene expression analysis of four radiation-resistant bacteria. *Genomics Insights* 2009, 2:11–22.
- [51] Aridhi S, Sghaier H, Zoghalmi M, Maddouri M, Mephu Nguifo E: Prediction of ionizing radiation resistance in bacteria using a multiple instance learning model. *J Comput Biol* 2015, 22:1–11.
- [52] Altschul SF, Gish W, Miller W, Myers EW, Lipman DJ: Basic local alignment search tool. *J Mol Biol* 1990, 215(3):403–410.

- [53] Altschul SF, Madden TL, Schaffer AA, Zhang J, Zhang Z, Miller W, Lipman DJ: Gapped BLAST and PSI-BLAST: a new generation of protein database search programs. *Nucleic Acids Res* 1997, 25(17):3389–3402.
- [54] Moretti S, Armougom F, Wallace IM, Higgins DG, Jongeneel CV, Notredame C: The M-Coffee web server: a meta-method for computing multiple sequence alignments by combining alternative alignment methods. *Nucleic Acids Res* 2007, 35(Web Server issue):W645–W648.
- [55] Kelley LA, Mezulis S, Yates CM, Wass MN, Sternberg MJ: The Phyre2 web portal for protein modeling, prediction and analysis. *Nat Protoc* 2015, 10(6):845–858.
- [56] Petersen TN, Brunak S, von Heijne G, Nielsen H: SignalP 4.0: discriminating signal peptides from transmembrane regions. *Nat Methods* 2011, 8(10):785–786.
- [57] Kern J, Wilton R, Zhang R, Binkowski TA, Joachimiak A, Schneewind O: Structure of surface layer homology (SLH) domains from *Bacillus anthracis* surface array protein. *J Biol Chem* 2011, 286(29):26042–26049.
- [58] Wu T, Malinverni J, Ruiz N, Kim S, Silhavy TJ, Kahne D: Identification of a multicomponent complex required for outer membrane biogenesis in *Escherichia coli*. *Cell* 2005, 121(2):235–245.
- [59] Acosta F, Ferreras E, Berenguer J: The beta-barrel assembly machinery (BAM) is required for the assembly of a primitive S-layer protein in the ancient outer membrane of *Thermus thermophilus*. *Extremophiles* 2012, 16(6):853–861.
- [60] Caston JR, Berenguer J, de Pedro MA, Carrascosa JL: S-layer protein from *Thermus thermophilus* HB8 assembles into porin-like structures. *Mol Microbiol* 1993, 9(1):65–75.
- [61] Engelhardt H, Peters J: Structural research on surface layers: a focus on stability, surface layer homology domains, and surface layer-cell wall interactions. *J Struct Biol* 1998, 124(2–3):276–302.
- [62] Avall-Jaaskelainen S, Hynonen U, Ilk N, Pum D, Sleytr UB, Palva A: Identification and characterization of domains responsible for self-assembly and cell wall binding of the surface layer protein of *Lactobacillus brevis* ATCC 8287. *BMC Microbiol* 2008, 8:165.
- [63] Albuquerque L, Simoes C, Nobre MF, Pino NM, Battista JR, Silva MT, Rainey FA, da Costa MS: *Truepera radiovictrix* gen. nov., sp. nov., a new radiation resistant species and the proposal of *Trueperaceae* fam. nov. *FEMS Microbiol Lett* 2005, 247(2):161–169.
- [64] Peters J, Peters M, Lottspeich F, Schafer W, Baumeister W: Nucleotide sequence analysis of the gene encoding the *Deinococcus radiodurans* surface protein, derived amino acid sequence, and complementary protein chemical studies. *J Bacteriol* 1987, 169(11):5216–5223.

- [65] Adindla S, Inampudi KK, Guruprasad K, Guruprasad L: Identification and analysis of novel tandem repeats in the cell surface proteins of archaeal and bacterial genomes using computational tools. *Comp Funct Genomics* 2004, 5(1):2–16.
- [66] Schuster B, Györvary E, Pum D, Sleytr UB: Nanotechnology with S-layer proteins. *Methods Mol Biol* 2005, 300:101–123.
- [67] Schuster B, Sleytr UB: Biomimetic interfaces based on S-layer proteins, lipid membranes and functional biomolecules. *J R Soc Interface* 2014, 11(96):20140232.
- [68] Mark SS, Bergkvist M, Yang X, Teixeira LM, Bhatnagar P, Angert ER, Batt CA: Bionanofabrication of metallic and semiconductor nanoparticle arrays using S-layer protein lattices with different lateral spacings and geometries. *Langmuir* 2006, 22(8):3763–3774.
- [69] Newsome L, Morris K, Lloyd JR: The biogeochemistry and bioremediation of uranium and other priority radionuclides. *Chem Geol* 2014, 363:164–184.
- [70] Selenska-Pobell S, Panak P, Miteva V, Boudakov I, Bernhard G, Nitsche H: Selective accumulation of heavy metals by three indigenous *Bacillus* strains, *B. cereus*, *B. megaterium* and *B. sphaericus*, from drain waters of a uranium waste pile. *FEMS Microbiol Ecol* 1999, 29(1):59–67.
- [71] Pollmann K, Raff J, Schnorpfeil M, Radeva G, Selenska-Pobell S: Novel surface layer protein genes in *Bacillus sphaericus* associated with unusual insertion elements. *Microbiology* 2005, 151(Pt 9):2961–2973.
- [72] Das SK, Ghosh P, Ghosh I, Guha AK: Adsorption of rhodamine B on *Rhizopus oryzae*: role of functional groups and cell wall components. *Colloids Surf B Biointerfaces* 2008, 65(1):30–34.
- [73] Reed DT, Deo RP, Rittmann BE: Subsurface interactions of actinide species with microorganisms. In: *The Chemistry of the Actinide and Transactinide Elements*. Edited by Morss LR, Edelstein N, Fuger J, Katz JJ, Vol. 1–6. Netherlands: Springer; 2010: pp. 3595–3663.
- [74] Weinert U, Pollmann K, Barkleit A, Vogel M, Gunther T, Raff J: Synthesis of S-layer conjugates and evaluation of their modifiability as a tool for the functionalization and patterning of technical surfaces. *Molecules* 2015, 20(6):9847–9861.
- [75] Suhr M, Unger N, Viacava KE, Gunther TJ, Raff J, Pollmann K: Investigation of metal sorption behavior of Slp1 from *Lysinibacillus sphaericus* JG-B53: a combined study using QCM-D, ICP-MS and AFM. *Biometals* 2014, 27(6):1337–1349.

