

# We are IntechOpen, the world's leading publisher of Open Access books Built by scientists, for scientists

6,900

Open access books available

186,000

International authors and editors

200M

Downloads

Our authors are among the

154

Countries delivered to

TOP 1%

most cited scientists

12.2%

Contributors from top 500 universities



WEB OF SCIENCE™

Selection of our books indexed in the Book Citation Index  
in Web of Science™ Core Collection (BKCI)

Interested in publishing with us?  
Contact [book.department@intechopen.com](mailto:book.department@intechopen.com)

Numbers displayed above are based on latest data collected.  
For more information visit [www.intechopen.com](http://www.intechopen.com)



# From the Ovary to the Fallopian Tube: A History of Ovarian Carcinogenesis

G. Chene, G. Lamblin, K. Le Bail-Carval, P. Chabert, J.D. Tigaud and G. Mellier

Additional information is available at the end of the chapter

<http://dx.doi.org/10.5772/58945>

## 1. Introduction

Because of the poor prognosis for ovarian cancer due to the fact it is most often diagnosed late at an advanced stage, screening and early detection could likely reduce the mortality rate. Epithelial ovarian cancer represents 90% of all ovarian cancers [1, 2]. Initially divided into a double-pathway, epithelial subtypes are in fact distinct diseases with specific characteristics and molecular signatures (see tables 1 and 2) [3, 4]. Recent persuasive data support the idea that high grade serous carcinoma (HGSC) may arise from the Fallopian tube epithelium whereas endometrioid and clear cell cancers could arise from atypical endometriosis through the Fallopian tube. Opportunistic salpingectomy could reduce both HGSC, and endometriosis-associated ovarian cancers (EAOC) (i.e. endometrioid and clear cell cancers).

	Type 1	Type 2
Molecular signatures	BRAF, KRAS, PTEN, b catenin	TP53
Genomic instability	low	high
Frequency	20%	80%
Precursors	adenoma/ borderline tumors, endometriosis	de novo
Prognosis	stage 1, slow evolution	> stage 1, fast evolution
Histological sub-types	low grade serous, endometrioid, mucinous, clear cell carcinoma	high-grade serous, non-differentiated carcinoma, carcinosarcoma

**Table 1.** Diagram of double-pathway oncogenesis [2]

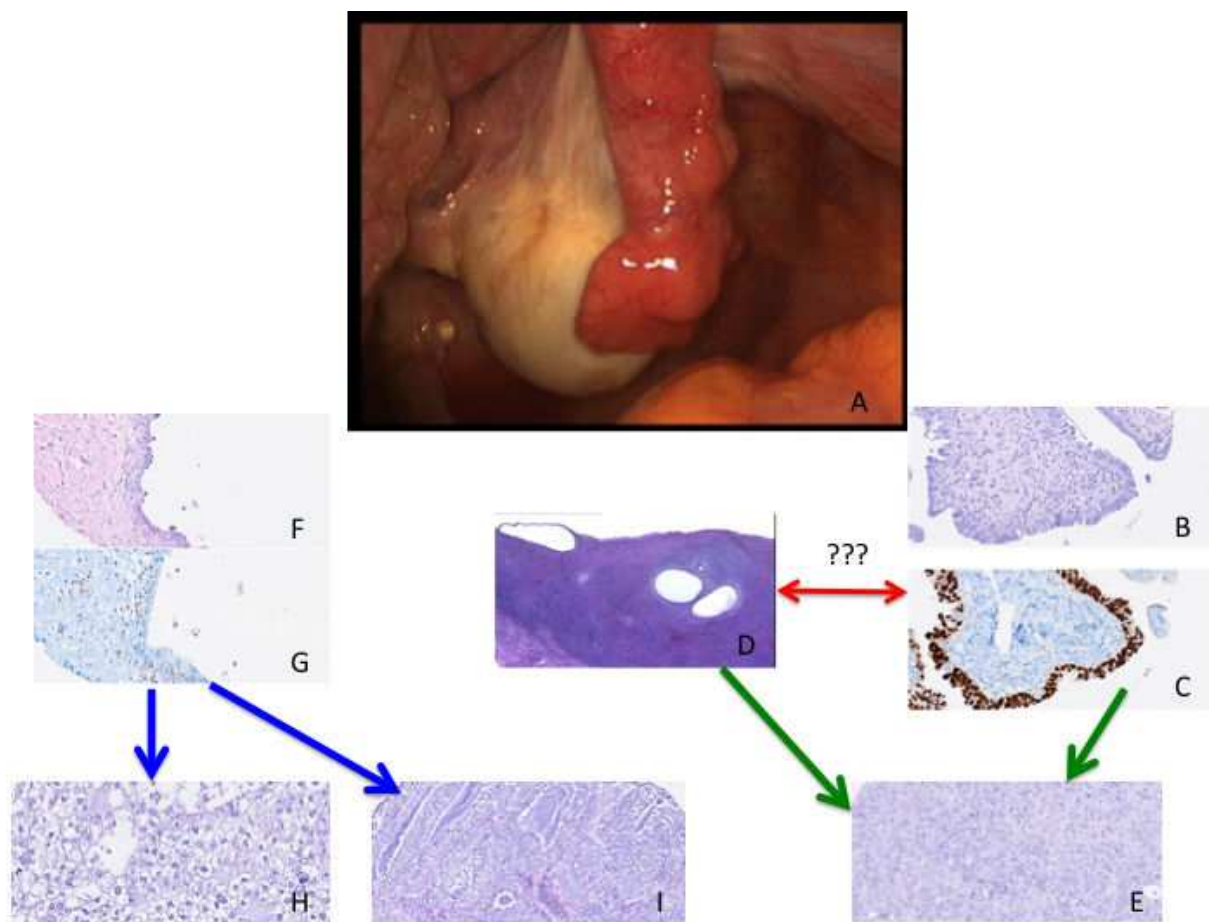
	Low grade serous	Clear cell	Endometrioid	Mucinous	High grade serous
Molecular signatures	BRAF KRAS HER2	ARID1A HNF 1B PI3KCA PTEN	ARID1A PTEN B-catenine KRAS	KRAS HER2	TP53 BRCA
Genomic instability	low	low	low	low	high
Frequency	5%	10%	10%	3%	70%
Precursors	Borderline serous	Endometriosis Adenofibroma	Endometriosis Adenofibroma	Sequence: Adenoma/ Borderline	-Fallopian tube (STIC) -Ovary (dysplasia)
Prognosis	Favourable	Intermediate	Favourable	Favourable	Poor
Initial response to platinum salt chemotherapy	Intermediate (20-30%)	Chemoresistance (15%)	Good	Chemoresistance (15-20%)	Good (80%)
Potential therapeutic targets	BRAF inhibitors MEK inhibitors	PI3K inhibitors	mTOR inhibitors	MEK inhibitors	PARP inhibitors Cell cycle inhibitors

**Table 2.** Diagram of quintuple-pathway oncogenesis [3, 4]. This classification shows the clinico-pathological differences along with potential therapeutic targets for each histological sub-type. An advantage of this new classification is that it describes the heterogeneous nature of ovarian cancer.

We propose to discuss the origin of HGSC and EAOc cancers and the potential clinical implications.

## 2. High-grade serous ovarian cancer (see figure 1)

At this point it seems appropriate to recall the anatomy and embryology involved in order to clarify the close relationship and interaction between Fallopian tube and ovary. During embryonic development, the coelomic epithelium gives rise to the peritoneum and ovarian surface epithelium (OSE). The Mullerian duct develops as an invagination of the coelomic epithelium in direct continuity of the OSE. So the OSE and Fallopian tube share the same origin. Moreover, there is a direct histological connection between the epithelium of the fimbria and the OSE [6] (see figure 1). As we will show below, all these various elements suggest that we should no longer use the term ovarian cancer, but rather tubo-ovarian cancer.



**Figure 1.** A-In this laparoscopic view, we can see the close anatomical interaction between the fallopian tube and the ovary; In the high-grade serous ovarian carcinogenesis, serous tubal intraepithelial carcinoma (STIC in photo B) may be the non-invasive precursor of high-grade ovarian cancer (E). STIC is characterized by a p53 immunohistochemical signature (C); On the other hand, ovarian epithelial dysplasia (see the inclusion cysts in D) may be also a preinvasive lesion in the high-grade serous ovarian carcinogenesis. This raises the question of the temporal relationships and chronology of events: what is the exact relationship between ovarian dysplasia and STIC ? In the clear cell (H) and endometrioid (I) ovarian carcinogenesis, endometriosis (F) may be a non-invasive precursor when there is loss of ARID1A expression (G). The fallopian tube may be considered as both as a source in the high-grade serous ovarian carcinogenesis and as a conduit for endometriosis in the clear cell and endometrioid ovarian carcinogenesis [60].

**a. Once upon a time the ovarian hypothesis:**

In 1971, Fathalla [7] developed the theory of incessant ovulation after noting the high frequency of ovarian cancer in nulliparous women and the high prevalence of peritoneal carcinosis of ovarian origin in battery hens (ovulation every 28 hours, rate of spontaneous ovarian cancer between 30 and 40% at 4 years of age). Inversely, the protective role of oral contraception, pregnancy and breastfeeding thanks to their inhibition of ovulation has been well-established [8-10]: repeated ovulations are pro-inflammatory events and could result in the formation of ovarian epithelium inclusion cysts in the OSE. These inclusion cysts, exposed as they are to cellular, paracrine and hormonal growth factors in the pro-inflammatory stromal microenvironment, could thus be the origin of a neoplastic process.

While 90% of cases of ovarian cancer are sporadic, 10% are hereditary in nature with a high proportion linked with BRCA mutations. There is a 35 to 60% cumulative risk at age 70 in case of BRCA 1 mutation. The risk is a little lower in case of BRCA2 mutations, lying between 10 and 27% [11]. These patients, their ovaries and tubes provide an excellent model for studies aiming at a better understanding of ovarian carcinogenesis. Due to the fact that bilateral adnexectomy is recommended in this group at risk, after the age of 35 and after completion of childbearing, these ovaries (and then the tubes, see below) have received particular attention in histopathological and molecular level studies. As a consequence histopathological anomalies called ovarian epithelial dysplasia (by analogy with other preinvasive lesions of the genital tract) were initially described in ovaries with a genetic risk (BRCA mutation) [12]. In view of the high risk of ovarian cancer in these patients if bilateral ovariectomy does not take place, these dysplastic lesions were therefore considered to be preinvasive with a potential towards cancer.

Similar dysplastic lesions were also revealed in areas adjacent to ovarian cancer, and also in the contralateral ovary in case of unilateral ovarian cancer without any genetic predisposition [13-18]. The molecular and histopathological similarities thus suggested that these dysplastic lesions were the initial phases of ovarian carcinogenesis.

More recently dysplastic anomalies were revealed in ovaries from patients who had undergone an ovulation stimulation process in a context of infertility [19, 20]. However since the histopathological, immunohistochemical and molecular characteristics differed from those of dysplastic lesions found in patients with a BRCA genetic mutation, it would appear that there may be several types of dysplasia that evolve differently (towards cancer in case of BRCA mutation, unlike the case after an *in vitro* fertilisation protocol) [21, 22].

**b. ...and all of a sudden the tubal hypothesis:**

In 2001, Piek *et al* [23] revealed for the first time 6 cases of tubal dysplasia including one case of severe dysplasia in a cohort of 12 patients with a genetic predisposition for ovarian cancer. Other studies have corroborated these results with nearly 10% Serous Tubal Intraepithelial Carcinoma (or STIC), 57% to 100% of which were located in the fimbriated end of the Fallopian tube [24-27]. These lesions consist of nonciliated cells exhibiting 3 or more of the following features: abnormal chromatin pattern, nuclear enlargement, marked nuclear pleomorphism, epithelial stratification and/or loss of polarity, and nuclear moulding. They are also characterised by high immunohistochemical expression of TP53 (expression level between 80% and 92%) and highly positive levels for proliferation marker Ki67 and DNA double-strand break marker  $\gamma$ -H2AX [24-27].

Other even earlier tubal lesions have also been described and it was possible to propose a serous carcinogenic sequence with a tubal origin: after a genotoxic stress and subsequent to various mutations (such as TP 53 mutation and BRCA mutation or epigenetic loss which play an important role in the maintenance of genomic integrity), very early histopathological anomalies of the tube would appear: these SCOUT lesions (Secretory Cell Outgrowths), characterised by a succession of at least 30 pseudostratified secretory epithelial cells with a low expression of PAX2, PTEN and Ki67, and no p53 mutation, would then evolve towards

p53 signatures [28, 29]. These p53 signatures, defined by a succession of at least 12 secretory cells with intense nuclear p53 staining and a low proliferative index, could evolve towards STIC (same TP53 molecular mutation suggesting a clonal relationship and a genetic identity). However, these p53 signatures are found in around 50% of normal control Fallopian tubes and it is not possible at the time of writing to tell which signature(s) might evolve towards STIC and which would not undergo this unfavourable evolution [30].

Finally, STIC lesions may metastase in the ovary and adjacent peritoneum [31].

Several series of sporadic high-grade serous ovarian and serous peritoneal cancers (without BRCA mutation) were re-analysed and revealed the presence of the same serous carcinogenic sequence in almost 50% of cases [31].

### c. Tubal or ovarian origin?

STIC lesions present preinvasive characteristics, as shown by the following elements:

- identical TP 53 mutations in STIC lesions and invasive cancer [32]
- up-regulation of other genes (RSF1, Cyclin E, p16, FAS, Stathmin 1, Lamnin 1) as it is the case in invasive ovarian cancer [33-35]
- genomic instability: telomeric shortening and chromosomic rearrangements [36-38]
- animal experiments: development of peritoneal carcinosis with a tubal origin

But, other arguments plead in favour of an ovarian origin. Notably, the fact that STIC lesions are not found in all genetic or sporadic series of ovarian cancer. If there are no STIC lesions or at the very least histological scarring due to STIC of the tube, what would the origin of the cancer be? So this raises the question of the temporal relationships and chronology of events: like for the chicken and the egg, do STIC lesions precede invasive cancer, or the contrary?

To conclude, although during the last century the postulate was raised that ovarian cancer originates in the ovary itself (which seemed logical and is the case for other organs), it would today appear that ovarian cancer has a dual origin, both tubal (predominating in case of genetic risk with BRCA mutation) and ovarian. It remains to be seen how and why one patient will have a cancer of tubal origin while another will have one of ovarian origin [31]. Furthermore, what triggers the transformation of normal secretory Fallopian tube epithelium into HGSC?

The solution is likely in the interaction between the tube and the ovary. Some authors have described the chronic inflammatory theory [39, 40]. They stated that there is less retrograde flow of inflammatory mediators from the genital tract and through the tube with tubal ligation, hysterectomy, oral contraception or pregnancy (closed cervix). For other authors, the release of inflammatory follicular fluid during ovulation may cause damage on the ovarian and fallopian tube epithelial cells [41, 42]. All these arguments point to the concept of tubo-ovarian cancer, i.e. a disease both in tube and ovary.

The potential clinical implications are discussed in the following paragraphs.



### 3. Endometrioid and clear cell cancers (see figure 1)

Women with CC and EC frequently present with endometriosis. In a review of 29 studies, Van Gorp *et al* [43] found a statistical association between endometriosis and endometriosis-associated ovarian cancers (EAOC): 36% of clear cell carcinoma were associated with endometriosis (11-70%), and 10% in case of endometrioid carcinoma (5-43%). A precursor lesion called atypical endometriosis was proposed. Atypical endometriosis (AE) is defined by the presence of hyperplasia or cytological atypia, increased nuclear/cytoplasmic ratio, mild hyperchromosomia, mild to moderate pleomorphism, crowded and occasionally stratified epithelial cells. AE has been identified adjacent to concomitant EAOC, with a demonstrated transition from benign endometriosis through AE to EAOC. At the molecular level, AE and EAOC share common molecular abnormalities such as PTEN and PIK3CA mutations, HNF 1b up-regulation, MET amplification and loss of ARID1A [44].

ARID1A (loss or mutation) and PIK3CA are early events and likely occur in precursor lesions as well as in EAOC: mutation of ARID1A gene (AT rich interactive domain 1A) was found in 41 to 57% of clear cell cancers and 30 to 48% of endometrioid cancers [31, 45-47]. ARID1A is a tumour suppressor gene and encodes BAF 250a protein that is involved in the multi-protein SWI/SNF chromatin-remodelling complex.

It has been well established that the SWI/SNF complex is involved in DNA repair through cell cycle arrest and apoptosis, cell survival after DNA damage (particularly by promoting  $\gamma$ H2AX induction) and genomic stability. ARID1A has recently been demonstrated to act as a negative regulator of the cell cycle through interaction with TP53 and its mutation may lead to cellular dysfunction as dysregulation of chromatin remodelling [48]. Moreover, loss of expression of this gene was recently found in benign endometriosis (20%) and AE (38.5%) adjacent to malignant lesions (57.7%), suggesting a chronological association from benign through atypical endometriosis to EAOC [44]. Samartzis *et al* [49] found also loss of ARID1A/BAF 250a expression in presumably benign ovarian endometriomas (n=3/20, 15%) particularly in the form of cell clusters that could suggest a clonal loss of BAF 250a and a risk of carcinogenic transformation [31].

Finally tubal ligation is protective against EAOC suggesting passage of endometriosis through the tube as a key oncogenic step with potential clinical implications (see below).

### 4. Clinical implications

The challenge is to detect a microscopic lesion during the occult period. We know also the preclinical natural history of HGSC which lasts on average 4 years as *in situ*, stage 1 and 2 cancers and approximately 1 year as stage 3 /4 cancers before they become clinically apparent [50].

To date, there is no screening test for ovarian cancer. ROCA screening (Risk of Ovarian Cancer) may be promising. It is based on a computerised Bayesian algorithm comparing each individual's CA125 profile to the pattern in ovarian cancer and healthy women. If the CA125 rate

is closer to known cases of ovarian cancer, the risk may be greater and a specific clinical assessment with ultrasonography is performed. UKCTOCS will report on the impact on mortality in January 2015 [51, 52].

In the other non invasive methods, evaluation of DNA obtained by Papanicolaou test to detect ovarian cancers is probably encouraging: 41% (9/22) of ovarian cancers were identified using a panel of mutated genes from liquid Papanicolaou smear specimens [53].

However, none of these methods can currently be considered as a safe alternative to risk-reducing surgery. It has been thoroughly demonstrated that carrying out preventive bilateral adnexectomy significantly reduces the risk of ovarian cancer (by over 98%) in at-risk groups (BRCA mutations, Lynch syndrome, family history of breast/ovarian cancer). Nevertheless, while operative morbidity can remain limited thanks to minimally invasive laparoscopic surgery, the complications of surgically induced menopause should not be minimised in women who are still young [54].

The new tubal theories in which the Fallopian tube is considered to be a conduit for EAO (endometriosis as a precursor lesion) and as an origin for HGSC could result in a preference for exclusive bilateral salpingectomy instead of adnexectomy.

The current Canadian recommendations in British Columbia in gynaecological clinical and surgical practice are in line with this [55]:

- removal of Fallopian tube along with fimbriated end at the time of hysterectomy
- perform salpingectomy instead of tubal ligation
- genetic counseling and BRCA mutation screening in women at high genetic risk of HGSC, with risk-reducing surgery in patients with BRCA mutations

However, we believe a distinction should be drawn between HGSC and EAO:

- in HGSC risk groups carrying out salpingectomy could be an attractive alternative in that it avoids inducing menopause [56], but this preventive attitude appears to be premature as yet since the origin of this cancer does not seem to be the tube in absolutely all cases, and also because the impact of salpingectomy on ovarian reserves is still the subject of debate. Kwon *et al* [58] have developed a simulation model comparing three strategies in the BRCA population: bilateral salpingo-oophorectomy, bilateral salpingectomy, bilateral salpingectomy with delayed oophorectomy. The authors conclude that prophylactic adnexectomy is best in terms of reducing the risk of ovarian and breast cancer. However, bilateral salpingectomy with delayed oophorectomy could be an interesting option in terms of cost-effective strategy and higher quality of life.
- in groups at risk of EAO, the problem is not so much the Fallopian tube but rather that of endometriosis. Endometriosis very often develops early (sometimes during adolescence) and removal of the Fallopian tube could only be carried out far later and consequently would be of no interest. Only by drawing the distinction between (atypical) endometriosis with a risk of degeneration and benign endometriosis could efficient screening become possible. The use of specific markers such as ARID1A could be promising [54].



Finally, *ex vivo* optical imaging using reflectance and fluorescence may detect preinvasive lesions. McAlpine *et al* [58] were able to view STIC tubal lesions with 73% sensitivity, 83% specificity, 57% positive predictive value and 91% negative predictive value.

In the future, the development of real time *in vivo* high resolution imaging for STIC through fallopscopy (transcervical route) or salpingoscopy (confocal microlaparoscopy) could certainly be useful in patients with a genetic risk of ovarian cancer and who want to remain fertile, by allowing a precise histopathological diagnosis for the ovaries and tubes in real time and *in vivo* [59].

## 5. Conclusions

We have moved from one paradigm to another: instead of an exclusively ovarian origin, it appears that ovarian cancer may also have a tubal origin (probably in the majority of genetic risk cases) with the consequent questions concerning clinical implications and exclusively preventive salpingectomy.

We consider that more studies are still needed in order to validate these new concepts. It is clear now that, just as for breast cancer, ovarian cancer is a heterogeneous disease involving specific molecular signatures. Molecular characteristics may likely define personalized treatment specific to subtypes as is the case in breast cancer [31].

## Author details

G. Chene\*, G. Lamblin, K. Le Bail-Carval, P. Chabert, J.D. Tigaud and G. Mellier

\*Address all correspondence to: [chenegautier@yahoo.fr](mailto:chenegautier@yahoo.fr)

Department of Gynecology, Hôpital Femme Mère Enfant, HFME, Lyon CHU, Lyon, France

## References

- [1] Chene G, Dauplat J, Bignon Y J, Cayre A, Raoelfils I, Pomel C, Penault-Llorca F. Ovarian carcinogenesis: recent and old hypothesis. *Gynecol Obstet Fertil.* 2011; 39: 216-23
- [2] Ming-Shih I, Kurman RJ. Ovarian tumorigenesis. A proposed model based on morphological and molecular genetic analysis. *Am J Pathol* 2004; 164: 1511-18
- [3] Prat J. Ovarian carcinomas : five distinct diseases with different origins, genetic alterations, and clinicopathological features. *Virchows Arch.* 2012 ; 460 : 237-49

- [4] Chene G, Dauplat J, Cayre A, Robin N, Penault-Llorca F. The fallopian tube odyssey: from the ovary to the tube. About high-grade serous ovarian carcinoma. *Bull Cancer* 2013; 100: 757-64
- [5] Crum CP. Intercepting pelvic cancer in the distal fallopian tube : Theories and realities. *Mol Oncol* 2009 ; 3 : 165-70
- [6] Auersperg N. The origin of ovarian cancers--hypotheses and controversies. *Front Biosci (Schol Ed)*. 2013; 5: 709-19.
- [7] Fathalla M. Incessant ovulation : a factor in ovarian neoplasia ? *Lancet* 1971; 2: 163.
- [8] Riman T, Nilsson S, Persson IR. Review of epidemiological evidence for reproductive and hormonal factors in relation to the risk of epithelial ovarian malignancies. *Acta Obstet Gynecol Scand* 2004; 83: 783-95.
- [9] Schuetz AW, Lessman C. Evidence for follicle wall involvement in ovulation and progesterone production by frog follicles in vitro. *Differentiation*, 1982; 22: 79-84.
- [10] Colgin DC, Murdoch WJ. Evidence for a role of the ovarian surface epithelium in the ovulatory mechanism of the sheep: secretion of urokinase-type plasminogen activator. *Animal Reproduction Science*, 1997; 47: 197-204.
- [11] Chene G, Dauplat J, Robin N, Caure A, Penault-Llorca F. Tu-be or tu-be: that is the question... About serous ovarian carcinogenesis. *Critical Reviews in Oncol/Hematol* 2013; 88: 134-43
- [12] Deligdisch L. Ovarian dysplasia: a review. *Int J Gynecol Cancer* 1997; 7: 89-94.
- [13] Salazar H, Godwin AK, Daly MB, Laub PB, Hogan M, Rosenblum N, Boente MP, Lynch HT, Hamilton TC. Microscopic benign and invasive malignant neoplasms and a cancer-prone phenotype in prophylactic oophorectomies. *J Natl Cancer Inst* 1996; 88: 1810/20.
- [14] Werness BA, Afify AM, Bielat KL, Eltabbakh GH, Piver MS, Paterson JM. Altered surface and cyst epithelium of ovaries removed prophylactically from women with a family history of ovarian cancer. *Hum Pathol* 1999, 30: 151-157.
- [15] Plaxe S, Deligdisch L, Dottino P, Cohen C. Ovarian intraepithelial neoplasia demonstrated in patients with stage I ovarian carcinoma. *Gynecol Oncol* 1990; 38: 367-72.
- [16] Mittal KR, Jacquotte AZ, Cooper JL, Demopoulos R. Contralateral ovary in unilateral ovarian carcinoma: a search for preneoplastic lesions. *Int J Gynecol Pathol* 1993; 12: 59-63.
- [17] Tressera F, Grases PJ, Labastida R, Ubeda A. Histological features of the contralateral ovary in patients with unilateral ovarian cancer : a case control study. *Gynecol Oncol* 1998; 71: 437-441.
- [18] Chene G, Penault-Llorca F, Le Bouedec G, Dauplat MM, Mishellany F, Jaffeux P, Aublet-Cuvelier B, Pouly JL, Dechelotte P, Dauplat J. Ovarian epithelial dysplasia

and prophylactic oophorectomy for genetic risk. *Int J Gynecol Cancer*. 2009 ; 19: 65-72

- [19] Nieto JJ, Crow J, Sundaresan M, Constantinovici N, Perret CW, Mc Lean AN, et al. Ovarian epithelial dysplasia in relation to ovulation induction and nulliparity. *Gynecol Oncol* 2001; 82: 344-349.
- [20] Chene G, Penault-Llorca F, Le Bouedec G, Mishellany F, Dauplat MM, Jaffeux P, et al. Ovarian epithelial dysplasia after ovulation induction: time and dose effect. *Human Reprod* 2009; 24: 132-138.
- [21] Dauplat J, Chene G, Pomel C, Dauplat MM, Le Bouedec G, Mishellany F, et al. Comparison of dysplasia profiles in stimulated ovaries and in those with a genetic risk for ovarian cancer. *Eur J Cancer* 2009; 45 (17): 2977-83.
- [22] Chene G, Penault-Llorca F, Tardieu A, Cayre A, Lagarde N, Jaffeux P, et al. Is there a relationship between ovarian epithelial dysplasia and infertility? *Obstet Gynecol Int*. 2012; 2012: 429085.
- [23] Piek JM, van Diest PJ, Zweemer RP. Dysplastic changes in prophylactic removed fallopian tubes of women predisposed to developing ovarian cancer. *J Pathol* 2001; 195 : 451-6.
- [24] Finch A, Shaw P, Rosen B, Murphy J, Narod SA, Colgan TJ. Clinical and pathologic findings of prophylactic salpingo-oophorectomies in 159 BRCA1 and BRCA2 carriers. *Gynecol Oncol* 2006; 100: 58-64
- [25] Callahan MJ, Crum CP, Medeiros F, Kindelberger DW, Elvin JA, Garber JE, Feltmate CM, Berkowitz RS, Muto MG. Primary fallopian tube malignancies in BRCA-positive women undergoing surgery for ovarian cancer risk reduction. *J Clin oncol*. 2007; 25: 3985-90
- [26] Leeper K, Garcia R, Swisher E, Goff B, Greer B, Paley P. Pathologic findings in prophylactic oophorectomy specimens in high-risk women. *Gynecol oncol* 2002; 87: 52-6
- [27] Medeiros F, Muto MG, Lee Y, Elvin JA, Callahan MJ, Feltmate C, Garber JE, Cramer DW, Crum CP. The tubal fimbria is a preferred site for early adenocarcinoma in women with familial ovarian cancer syndrome. *Am J Surg Pathol* 2006; 30: 230-6
- [28] Chen YE, Mehra K, Mehrad M, Ning G, Miron A, Mutter GL, Monte N, Quade BJ, McKeon FD, Yassin Y, Xian W, Crum CP. Secretory cell outgrowth, PAX2 and serous carcinogenesis
- [29] Tung CS, Mok SC Tsang YT et al. PAX2 expression in low malignant potential ovarian tumors and low grade ovarian serous carcinomas. *Mod Pathol* 2009; 22: 1243-50.
- [30] Mehra KK, Chang MC, Folkins AK, Raho CJ, Lima JF, Yuan L, Mehrad M, Tworoger SS, Crum CP, Saleemuddin A. The impact of tissue block sampling on the detection

of p53 signatures in fallopian tubes from women with BRCA 1 or 2 mutations (BRCA+) and controls. *Mod Pathol* 2011; 24: 152-6

- [31] Chene G, Lamblin G, Le Bail-Carval K, Chabert P, Bakrin N, Mellier G. Early preinvasive lesions in ovarian cancer. *Biomed Research International* 2014; 1-12: ID 639252
- [32] Kuhn E, Kurman RJ, Vang R, Sehdev AS, Han G, Soslow R, Wang TL, Shih IE; TP53 mutations in serous tubal intraepithelial carcinoma and concurrent pelvic high-grade serous carcinoma-evidence supporting the clonal relationship of the two lesions. *J Pathol* 2012; 226: 421-26
- [33] Sehdev AS, Kurman RJ, Kuhn E, et al. Serous tubal intraepithelial carcinoma upregulates markers associated with high-grade serous carcinomas including RSF-1 (HBXAP), Cyclin E and fatty acid synthase. *Mod Pathol* 2010 ; 23 : 844-55.
- [34] Karst AM, Levanon K, Duraisamy S, et al. Stathmin 1, a marker of PI3K pathway activation and regulator of microtubule dynamics, is expressed in early pelvic serous carcinomas. *Gynecol Oncol* 2011; 123 : 5-12
- [35] Roland IH, Yang WL, Yang DH, Daly MB, Ozols RF, Hamilton TC. Loss of surface and cyst epithelial basement membranes and preneoplastic morphologic changes in prophylactic oophorectomies. *Cancer* 2003; 98: 2607-23
- [36] Kuhn E, Meeker A, Wang TL, et al. Shortened telomeres in serous tubal intraepithelial carcinoma : an early event in ovarian high-grade serous carcinogenesis. *Am J Surg Pathol* 2010 ; 34 : 829-36
- [37] Chene G, Tchirkov A, Eymard-Pierre E, Dauplat J, Raoelfils I, Cayre A, Watkin E, Vago P, Penault-Llorca F. Early telomere shortening and genomic instability in tubo-ovarian preneoplastic lesions. *Clin Cancer Res* 2013; 19: 2873-82
- [38] Chene G, Ouellet V, Rahimi K, Barres V, Caceres K, Meunier L, Cyr L, De Ladurantaye M, Provencher D, Mes Masson AM. DNA damage signalling and apoptosis in preinvasive tubal lesions of ovarian carcinoma. *Int J Gynecol Cancer*; 2014: in press
- [39] Bosetti C, Negri E, Trichopoulos D, Franceschi S, Beral V, Tzonou A, Parazzini F, Greggi S, La Vecchia C. Long-term effects of oral contraceptives on ovarian cancer risk.
- [40] Fleming JS, Beaufie CR, Haviv I, Chenevix-Trench G, Tan OL. Incessant ovulation, inflammation and epithelial ovarian carcinogenesis: revisiting old hypotheses. *Molecular and cellular endocrinology*, 2006; 247: 4-21.
- [41] Emori MM, Drapkin R. The hormonal composition of follicular fluid and its implications for ovarian cancer pathogenesis. *Reprod Biol Endocrinol* 2014; 12: 60.
- [42] Lau A, Kollara A, St John E, Tone AA, Virtanen C, Greenblatt EM, King WA, Brown TJ. Altered expression of inflammation-associated genes in oviductal cells following

- fluid exposure: implications for ovarian carcinogenesis. *Exp Biol Med* 2014; 239: 24-32
- [43] Van Gorp T, Amant F, Neven P, Vergore I, Moerman P. Endometriosis and the development of malignant tumours of the pelvis. A review of literature. *Best Pract Res Clin Obstet Gynaecol* 2004; 18: 349-71.
- [44] Xiao W, Awadallah A, Xin W. Loss of ARID1A/BAF 250a expression in ovarian endometriosis and clear cell carcinoma. *Int J Clin Exp Pathol* 2012; 5: 642-50
- [45] Wiegand KC, Shah SP, Al-Agha OM, et al. ARID 1A mutations in endometriosis-associated ovarian carcinomas. *N Eng J Med* 2010; 363: 1532-43
- [46] Jones S, Wang TL, Shih Ie M, et al. Frequent mutations of chromatin remodeling gene ARID 1A in ovarian cell carcinoma. *Science* 2010; 330: 228-31
- [47] Lowery WJ, Schildkraut JM, Akushevich L, Bentley R, Marks JR, Huntsman D, Berchuck A. Loss of ARID 1A-associated protein expression is a frequent event in clear cell and endometrioid ovarian cancers
- [48] Lee HS, Park JH, Kim SJ, Kwon SJ, Kwon J. A cooperative activation loop among SWI/SNF, H2AX, and H3 acetylation for DNA double-strand break repair. *EMBO J* 2010; 29: 1434-45
- [49] Samartzis EP, Samartzis N, Noske A, Fedier A, Caduff R, Dedes KJ, Fink D, Imesch P. Loss of ARID1A / BAF 250a-expression in endometriosis: a biomarker for risk of carcinogenic transformation? *Modern Pathol* 2012; 1-8
- [50] Brown PO, Palmer C. The preclinical natural history of serous ovarian cancer: defining the target for early detection. *PLoS Med* 2009; 6: e1000114.
- [51] Menon U, Skates SJ, Lewis S, Rosenthal AN, McDonald N, Jacobs IJ. Prospective study using the risk of ovarian cancer algorithm to screen for ovarian cancer. *J Clin Oncol* 2005; 23: 7919-26.
- [52] Menon U, Griffin M, Gentry-Maharaj A. Ovarian cancer screening-current status, future directions. *Gynecol oncol* 2014; 132: 490-5
- [53] Kinde L, Bettgowda C, Wang Y, Wu J, Agrawal N, Shih IeM, Kurman R, Dao F, Levine DA, Giuntoli R, Roden R, Eshleman JR, Carvalho JP, Marie SK, Papadopoulos N, Kinzler KW, Vogelstein B, Diaz LA Jr. Evaluation of DNA from the Papanicolaou test to detect ovarian and endometrial cancers. *Sci Transl Med* 2013; 5: 167ra4.
- [54] Chene G, Rahimi K, Mes Masson AM, Provencher D. Surgical implications of the potential new tubal pathway for the ovarian carcinogenesis. *J Minim Invasive Gynecol*, 2013; 20: 153-9
- [55] McAlpine JN, Hanley GE, Woo MM, Tone AA, Rozenberg N, Swenerton KD, Gilks CB, Finlayson SJ, Huntsman DG, Miller DM; ovarian cancer research program of British Columbia. Opportunistic salpingectomy: uptakes, risks and complications of



a reguinal initiative for ovarian cancer prevention. *Am J Obstet Gynecol* 2014; 210: 471.e1-11

- [56] Dietl J, Wischhusen J, Hausler SFM. The post-reproductive fallopian tube: better removed? *Human reprod* 2011; 26: 2918-24
- [57] Kwon JS, Tinker A, Pansegrau G, McAlpine J, Housty M, McCullum M, Gilks CB. Prophylactic salpingectomy and delayed oophorectomy as an alternative for BRCA mutation carriers. *Obstet Gynecol* 2013; 121: 14-24
- [58] McAlpine JN, El Hallani S, Lam SF, Kalloger SE, Luk M, Huntsman DG, McAulay C, Gilks CB, Miller DM, Lane PM. Autofluorescence imaging can identify preinvasive or clinically occult lesions in fallopian tube epithelium: a promising step towards screening and early detection. *Gynecol oncol* 2011; 120: 385-92
- [59] Chene G, Penault-Llorca F, Cayre A, Robin N, Dauplat J. Early detection of ovarian cancer : tomorrow ? *J Gynecol Obstet Biol Reprod.* 2013; 42: 5-11
- [60] Tone AA, Salvador S, Finlayson SJ, Tinker AV, Kwon JS, Lee CH, Cohen T, Ehlen T, Lee M, Carey MS, Heywood M, Pike J, Hoskins PJ, Stuart GC, Swenerton KD, Huntsman DG, Gilks CB, Miller DM, McAlpin JN. The role of the fallopian tube in ovarian cancer. *Clin Adv Hematol Oncol* 2012; 10: 296-306

