

We are IntechOpen, the world's leading publisher of Open Access books Built by scientists, for scientists

6,900

Open access books available

186,000

International authors and editors

200M

Downloads

Our authors are among the

154

Countries delivered to

TOP 1%

most cited scientists

12.2%

Contributors from top 500 universities



WEB OF SCIENCE™

Selection of our books indexed in the Book Citation Index
in Web of Science™ Core Collection (BKCI)

Interested in publishing with us?
Contact book.department@intechopen.com

Numbers displayed above are based on latest data collected.
For more information visit www.intechopen.com



Cytogenomic Abnormalities and Dosage-Sensitive Mechanisms for Intellectual and Developmental Disabilities

Fang Xu and Peining Li

Additional information is available at the end of the chapter

<http://dx.doi.org/10.5772/55689>

1. Introduction

Within each human cell, double strand DNA molecules are packed into 22 pairs of autosomes numbered from 1 to 22 and one pair of sex chromosomes denoted as XX for female and XY for male. Every human chromosome has a centromere to guide its segregation through cell cycles and a telomere at each end to protect its integrity. Chromosomes play important roles in gene expression regulation, DNA replication and cell division. Abnormalities involving the number and the structure of each chromosome or a segment within a chromosome are known to introduce functional disturbance and cause genetic diseases.

Medical genetics has been driven by evolving technologic innovations for better genetic diagnosis and expanding clinical evidence for rational genetic counseling and disease treatment. Since 1970s, a series of technologies operating on differentiate staining of metaphase chromosomes or locus-specific hybridization of labeled DNA probes has been developed to study chromosomal and submicroscopic abnormalities. Karyotyping using Giemsa-stained banding pattern (G-band) on treated metaphase chromosomes and fluorescent in situ hybridization (FISH) mapping on metaphase chromosome or interphase chromatin are the standard procedures in clinical molecular cytogenetic laboratories. Molecular cytogenetic analysis of pediatric patients with developmental delay (DD), intellectual disability (ID), multiple congenital anomalies (MCA) and autistic spectrum disorders (ASD) has found many causative chromosomal abnormalities and some genomic disorders. In the past decade, genomic analysis using either oligonucleotide array comparative genomic hybridization (aCGH) or single nucleotide polymorphism (SNP) chip has been validated and recommended as the first-tier genetic testing for pediatric patients. This integrated cytogenomic approach further defines

the genomic coordinates and gene content of chromosomal and cryptic genomic abnormalities and extends the spectrum of etiologic causes for ID/DD/MCA and ASD. The genomic information facilitates fine-mapping of disease-causing genes and dissecting underlying pathogenic mechanisms through *in silico* bioinformatic data mining, *in vitro* cellular phenotyping and *in vivo* animal modeling. Ultimately, this progress will lead to rational disease classification and therapeutic interventions for patients with ID/DD/ASD [1-3].

2. Cytogenetic and genomic methodologies

2.1. Molecular cytogenetic approach

Clinical cytogenetics is the study of human chromosomal abnormalities and their associated phenotypes. In 1956, Tjio and Levan [4] correctly described that a normal human metaphase contains 46 chromosomes. This fundamental cytologic observation was built upon the development of *in vitro* cell culture techniques along with the use of colchicine to arrest the cell cycle at metaphase and the modification of Hsu's hypotonic treatment prior to fixation to spread out the chromosomes [5]. The analysis of directly Giemsa-stained chromosomes led to the identification of numerical chromosomal abnormalities like trisomy 21 in Down syndrome [6], 45,X in Turner syndrome [7], 47,XXY in Klinefelter syndrome [8], trisomy 13 [9], and trisomy 18 [10]. The early discoveries of these syndromic numerical chromosomal abnormalities prompted efforts to differentiate all 23 pairs of chromosomes to detect structural abnormalities. In 1968, Caspersson et al. [11] reported differentiate Quinacrine staining of chromosomes and triggered the development of various chromosome banding techniques. Giemsa staining on trypsin-treated chromosome spreads forms unique Giemsa-positive and negative bands which looks like G-band 'barcodes' for each pair of chromosomes under the microscope. A normal human G-band ideogram was used as a standard for accurate grouping, numbering and pairing of human chromosomes based on their size, centromere position, defined regions and bands; this organized chromosomal profile of an individual is referred to as a karyotype [12]. Chromosome heteromorphisms mainly involving highly repetitive sequences in the pericentric and satellite regions have been recognized through studies on normal human populations and diagnostic practices [13]. General consensus on heteromorphic regions and their reporting practice was reported [14]. Despite an effective tool to detect numerical and structural chromosomal abnormalities, the banding method has two obvious technical limitations: the requirement of viable cells for setting up cell culture to capture metaphases for microscopic analysis and the low analytical resolution of chromosomal G-bands. The size of a human genome is 3000 Mb (megabases) and estimated total number of protein-coding genes is about 20,000. So the average size of a chromosome G-band in a medium 500-band level is about 6 Mb and contains 40 coding genes. Before the application of genomic technologies, the lack of genomic mapping for involved genes of many detected chromosomal abnormalities had been the major obstacles for accurate karyotype-phenotype correlation and candidate gene identification.

In 1982, FISH technology using labeled DNA probes hybridized onto metaphase chromosomes was developed to map genes onto specific chromosomal G-band regions [15]. This gene mapping tool was immediately recognized to have great diagnostic value. FISH on metaphase chromosomes, using labeled DNA probes in the size of 100-800 kilobase (Kb), has enhanced the analytical resolution and allowed accurate diagnosis of genomic disorders (also termed contiguous gene syndromes or microdeletion disorders), such as DiGeorge syndrome (OMIM#188400) by a deletion at 22q11.2, Prader-Willi syndrome (OMIM#176270) and Angelman syndrome (OMIM#105830) by a deletion at 15q11.2. FISH can also be performed directly on interphase nuclei, which overcame the limitation of cell culture and extended its diagnostic application toward rapid screening of chromosomal and genomic abnormalities. Multiplex FISH panels with differentially labeled probes have been developed for prenatal screening of common aneuploidies involving chromosomes X, Y, 13, 18 and 21 [16] and for postnatal detection of cryptic subtelomeric rearrangements [17].

The molecular cytogenetic approach combining G-banding and FISH technologies has been the standard for a primitive genome-wide view or a locus-specific view of numerical and structural chromosomal abnormalities. An international system for human cytogenetic nomenclature (ISCN) was first introduced in 1978 and has been continuously updated to the current 2013 version for a systematic documentation of chromosomal and genomic abnormalities [12]. Practice guidelines for cytogenetic evaluation of DD/ID/MCA have been established; the abnormality detection rate is 3.7% by conventional karyotyping for large numerical and structural chromosomal abnormalities and up to 6.8% when combined with FISH analysis for targeted genomic disorders and subtelomeric rearrangements [18].

2.2. Genomic analysis as first-tier genetic testing

In 1992, to overcome frequent cell culture failure and poor metaphase quality in karyotyping solid tumor samples, Kallioniemi et al. [19] developed comparative genomic hybridization (CGH) using differently labeled test and control DNAs co-hybridized onto normal metaphase chromosomes to measure copy number changes. In 1995, Schena et al. [20] developed a microarray-based technology to quantitatively monitor multiple gene expression. A hybrid of these CGH and microarray technologies formed the novel array CGH (aCGH) technology for a high resolution analysis of copy number changes through the genome. From 1998 to 2001, prototype CGH arrays with increased coverage from a single chromosome to the whole genome using spotted BAC or PAC clones were produced by academic laboratories [21, 22]. Five years later, high-throughput, high density oligonucleotide microarrays or single nucleotide polymorphism (SNP) chips following industrial standards along with user-friendly analytical software packages were developed by several companies. These novel genomic technologies quickly filled the gap between the megabase (Mb)-range chromosome G/R-bands and kilobase (Kb)-level gene structure and led to the discovery of polymorphic copy number variants (CNV) in the normal human genome [23, 24]. CNVs are defined as the gain or loss of genomic materials larger than 1 kb in size and they present in approximately 12% of the genome from normal human populations [24]. Meanwhile, these genomic technologies had also been applied to delineate chromosomal abnormalities and detect pathogenic genomic

imbalances for patients with DD/ID/MCA in a research setting [25-28]. These technical and research progresses set a solid foundation for diagnostic application.

To ensure the safety and effectiveness of a new technology for genetic diagnosis, analytical and clinical validities followed by evidence-based practice guidelines have to be established. Genomic analysis involves multi-step bench procedures of DNA extraction, enzymatic labeling or extension and DNA hybridization, a large amount of data analysis and knowledge-based result interpretation. The integration of this DNA-based genomic analysis into a cell-based microscopic analysis could be a technical challenge for many clinical cytogenetic laboratories.

For genomic analysis, analytical validity refers to the probability that a test will be positive when particular copy number variants (deletion or duplication) are present (analytical sensitivity), the probability that the test will be negative when these variants are absent (analytical specificity), and the analytical resolution [29]. Most analytical validation studies compared the outcomes between the genomic analysis and the conventional cytogenetic method or among different platforms. Two earlier pilot studies compared array results with known chromosomal abnormalities from 25 cases to validate targeted BAC clone arrays, and the clone-by-clone sensitivity and specificity were estimated to be 96.7% and 99.1% respectively [30, 31]. Using a receiver operating characteristic (ROC) curve, the analytical validity of a genome-wide oligonucleotide aCGH (Agilent 44K) showed 99% sensitivity and 99% specificity when the analytical resolution was set at 300-500 Kb by five to seven contiguous oligonucleotides (about six times the average spatial resolution of 68 Kb, given by the coverage of a 3,000,000 Kb human genome with approximately 44,000 oligonucleotide probes). For the detection of mosaicism using the set resolution, aCGH can achieve 85% sensitivity and 95% specificity for a mosaic pattern at 50% of the cell population, but increased test-to-test variations and reduced sensitivity are expected as the mosaic percentage decreases [32]. Another validation study recommended similar analytical parameters by using a sliding window of four to five oligonucleotide probes [33]. Additionally, the comparison of the area under the ROC curve clearly demonstrated that the analytical validity of oligonucleotide aCGH outperformed BAC clone aCGH [32]. The superior performance of oligonucleotide aCGH over BAC clone aCGH was later confirmed in a comparative analysis [34]. ROC analysis is effective in evaluating and comparing analytical validity among different technical platforms for a rational decision in selecting a novel technology for diagnostic application.

Cross platform comparison on a 33K tiling path BAC array, 500K affymetrix SNP chip, 385K Nimblegen oligonucleotide array and 244K Agilent oligonucleotide array was performed using ten cases with known genomic imbalances ranging from 100 Kb to 3 Mb. Sensitive performances were noted in all platforms, but accurate and user-friendly computer programs are of crucial importance for reliable copy number detection [35]. Technically, one obvious advantage of the SNP chips over aCGH is the ability to detect uniparental disomy (UPD), copy neutral loss of heterozygosity (CN-LOH) or absence of heterozygosity (AOH), and level of consanguinity and incest [36]. However, the introduction of SNP probes into CGH array by Agilent Technologies has resolved the technical differences to a certain extent. Validation studies of UPD detection using the Affymetrix SNP genechips detected isodisomic UPD and segmental AOH of a defined size but missed heterodisomic UPD [37, 38]. The high density aCGH and SNP chips have achieved exon-by-exon coverage to detect intragenic and exonic copy number changes, which could allow direct evaluation of genotype-phenotype concord-

ance [39]. A recent study using exon-level high density aCGH on a targeted list of genes showed the detection of mostly exonic deletions in 2.9% cases with autosomal dominant disorders, intragenic deletions in 10.1% of cases of autosomal recessive disorders tested with one known mutation, and a deletion and duplication in 3.5% of X-linked disorders [40]. Laboratories pursuing this high resolution genomic analysis will require additional validation studies, in-depth result interpretation into Mendelian disorders, more familial follow up studies for incidental or secondary findings, and eventually further functional studies.

Clinical validation refers to the probability that a test will be positive in people with the disease (clinical sensitivity) or negative in people without the disease (clinical specificity) [29]. There were concerns about false negative results, procedure variability and interpretation criteria for the clinical application of early versions of targeted BAC clone array [41]. Due to the high cost of aCGH and SNP chip analysis, a validation study on a large number of patient and control samples in every clinical laboratory is not practical. The ACMG guidelines recommend a validation procedure of analyzing a minimum of 30 specimens with different known chromosomal abnormalities [42]. Most cytogenetic laboratories performed a parallel comparison between aCGH or SNP chip analysis and karyotyping on a small case series. All these studies demonstrated consistently that the aCGH or SNP chip can define the genomic coordinates and gene content of chromosomally observed imbalances and also detect cryptic microdeletions, microduplications and subtelomeric rearrangements. For example, a focus oligonucleotide aCGH was validated with 100% concordance toward known chromosomal imbalances and yielded an 11.9% abnormal detection rate of 211 clinical samples [43]. Oligonucleotide aCGH using high density Agilent 244K was validated in 45 cases with known chromosomal abnormalities and microdeletions [44]. A multi-center comparison of 1,499 patients using the same oligonucleotide platform (Agilent 44K) showed a 12% abnormality detection rate, and about 53% of the abnormal findings are less than 5 Mb and thus beyond the analytical resolution of routine karyotyping [45]. The clinical validity of genomic analysis could be estimated from data published by the International Standards for Cytogenomic Arrays consortium (ISCA). Using 14 well known recurrent microdeletions and microduplications ranging from 1.5-3 Mb as a reference set of genomic disorders, 458 microdeletions and 270 microduplications were detected from 15,749 pediatric patients and 12 microdeletions and 53 microduplications were found from 10,118 published controls [46]. Given the analytical sensitivity of 99% at a resolution of 300-500 Kb for a routine aCGH (Agilent 44K) [32], the clinical sensitivity is close to 100% for this reference set of genomic disorders; given the 65 false negative results from 10,118 controls, the clinical specificity is estimated to be 99.4%. The near-perfect validities and significantly improved resolution of genomic technologies made them ideal diagnostic tools for delineating chromosomal imbalances and detecting CNVs.

2.3. Integrated cytogenomic workflow and practice guidelines

The current practice guidelines from the American College of Medical Genetics (ACMG) and the peer consensus recommend that genomic analysis be the first-tier genetic testing for pediatric patients with DD/ID/MCA/ASD [47-50]. A CNV detected from a normal individual is likely a polymorphic variant without clinical significance and usually termed as a benign CNV (bCNV). A CNV with known disease association is referred as pathogenic CNV (pCNV), and a rare or private CNV with uncertain clinical relevance is named a variant of unknown significance (VUS) [51]. For the past five years, clinical genomic analysis has progressed rapidly

from 'targeted' or 'focused' aCGH to genome-wide high resolution aCGH or SNP chips. A systematic review of 21,698 pediatric patients analyzed by different genomic platforms demonstrated a diagnostic yield of 15-20% [47], which is two to three times higher than the 3.7-6.8% yield by molecular cytogenetic analysis [18].

In diagnostic practice, there are serious concerns regarding the complete replacement of molecular cytogenetic approach. The analytical validities and technical capacity of chromosome, FISH and oligonucleotide aCGH are summarized in Table 1. Although cytogenetic testing has gradually become a supplemental or confirmatory procedure, karyotyping is still the gold standard to detect numerical chromosomal abnormalities (e.g., trisomy 21 for Down syndrome and monosomy X for Turner syndrome) and structural rearrangements (e.g. Robertsonian translocation) and FISH is also the 'cell-based' method of choice to determine mosaic patterns. Approximately 45% of genomic imbalances are larger than 3-5 Mb and could be confirmed by high resolution G-banding; most recurrent genomic disorders, subtelomeric rearrangements and mosaic patterns can be readily confirmed by clinically-validated commercial FISH probes [45].

In a recent study on the interpretation and reporting of CNVs without known associated abnormal phenotype from different laboratories, it was found that none of the thirteen CNVs was in complete agreement and the interpretations ranged from normal to abnormal in some cases [52]. In fact, some genomic findings will always be difficult to interpret because of their variable expressivity and incomplete penetrance. The collection of bCNVs, pCNVs and VUSs into web-delivered databases has provided an essential tool in interpreting results for diagnostic laboratories and also in educating clinical geneticists and genetic counselors [53]. The websites of Database of Genomic Variants (DGV), International Standards for Cytogenomic Arrays (ISCA), DatabasE of Chromosomal Imbalance and Phenotype in Humans using Ensembl Resources (DECIPHER) and other related web resources are listed at the end of this report. CNVs in the DGV, DECIPHER and ISCA have been loaded onto the Human Genome Browser as searchable tracks. The brief clinical description from DECIPHER [54] and the evidence-based rating of CNV into pathogenic, likely pathogenic, uncertain significance, likely benign and benign from ISCA [55] are all helpful in reporting genomic findings. Recognized cytogenomic syndromes usually have entries in the Online Mendelian Inheritance in Man (OMIM). Novel cytogenomic abnormalities are usually presented as case reports and can be search from PubMed. Reports of a series of similar findings and in-depth reviews will provide more evidence. Figure 1 shows an aCGH detected 16p13.11 deletion in a patient with ASD in comparison with pathogenic deletions and duplications documented in the DECIPHER and ISCA databases. Searchable clinical information from these databases could be used to assure genotype-phenotype correlations. According to the genotype-phenotype correlation, a four-level evidence-based result interpretation scheme has been proposed [56]:

Level I: Tight genotype-phenotype correlation with well-defined association of the described syndrome and the pCNV. There may be variability in the phenotype, but the spectrum of variability is well described (e.g. **Williams syndrome** and **DiGeorge syndrome**). Many known syndromes have an assigned OMIM number which could be used directly as a reference in the report.

Analytical Validity*					Types of Abnormalities Detected**						
Spatial		Analytical			Chr	Bal	Unbal	UPD			
Resolution	Resolution	Sensitivity	Specificity		Num Abn	Struc Abn	Struc Abn	CNV	AOH	Exonic	Mosaic
Cell-based											
G-banding											
Routine (400-550 bands)		5 ~ 7 Mb			+	+	+	-	-	-	>6%
High Resolution (550-850 bands)		3 ~ 5 Mb			+	+	+	-	-	-	>6%
FISH											
Gene/locus-specific		100-800 Kb	~98%	~98%	+	+	+	+	-	-	>3~5%
Regional specific (cen/subtel)		>100 Kb	~98%	~98%	+	+	+	+	-	-	>3~5%
DNA-Based											
Oligonucleotide aCGH (Agilent)											
Human CGH 44K	68 Kb	400~500 Kb	>99%	>99%	+	-	+	+	-	-	>20%
Human CGH 180K	17 Kb	100~120 Kb	>99%	>99%	+	-	+	+	-	-	>20%
Human CGH+SNP 180K	17 Kb	100~120 Kb	>99%	>99%	+	-	+	+	+	-	>20%
Human CGH+SNP 400K	7.5 Kb	40~50 Kb			+	-	+	+	+	+	>20%

* Sensitivity and specificity of FISH based on laboratory validation and of aCGH based on ref. #32

** Chr = chromosome, num = numerical, bal = balanced, unbal = unbalanced, Abn = abnormalities; CNV = copy number variant, UPD = uniparent disomy, AOH = Absence of heterozygosity, + detectable, - undetectable; percentage of mosaic detection based on chromosome analysis of 50 metaphases, FISH assay of 200 cells and ref#32 for aCGH.

Table 1. Analytical Validities and Diagnostic Capacity of Cytogenomic Analyses

Level II: Evolving genotype-phenotype correlation. The described syndrome is represented by a case report in the literature, or is associated with more than one distinct phenotype and may be influenced by penetrance or modifying genes, such as **1q21.1 duplication or deletion syndrome**.

Level III: Possible new genotype-phenotype correlation. The CNV has not been described in the literature before, and no published phenotypic data are available.

Level IV: Uninterpretable multiple CNVs and VUSs. None of which are reported as normal variants or associated with a disease phenotype, or one or more of the CNVs/VUSs are also found in a phenotypically discordant parent.

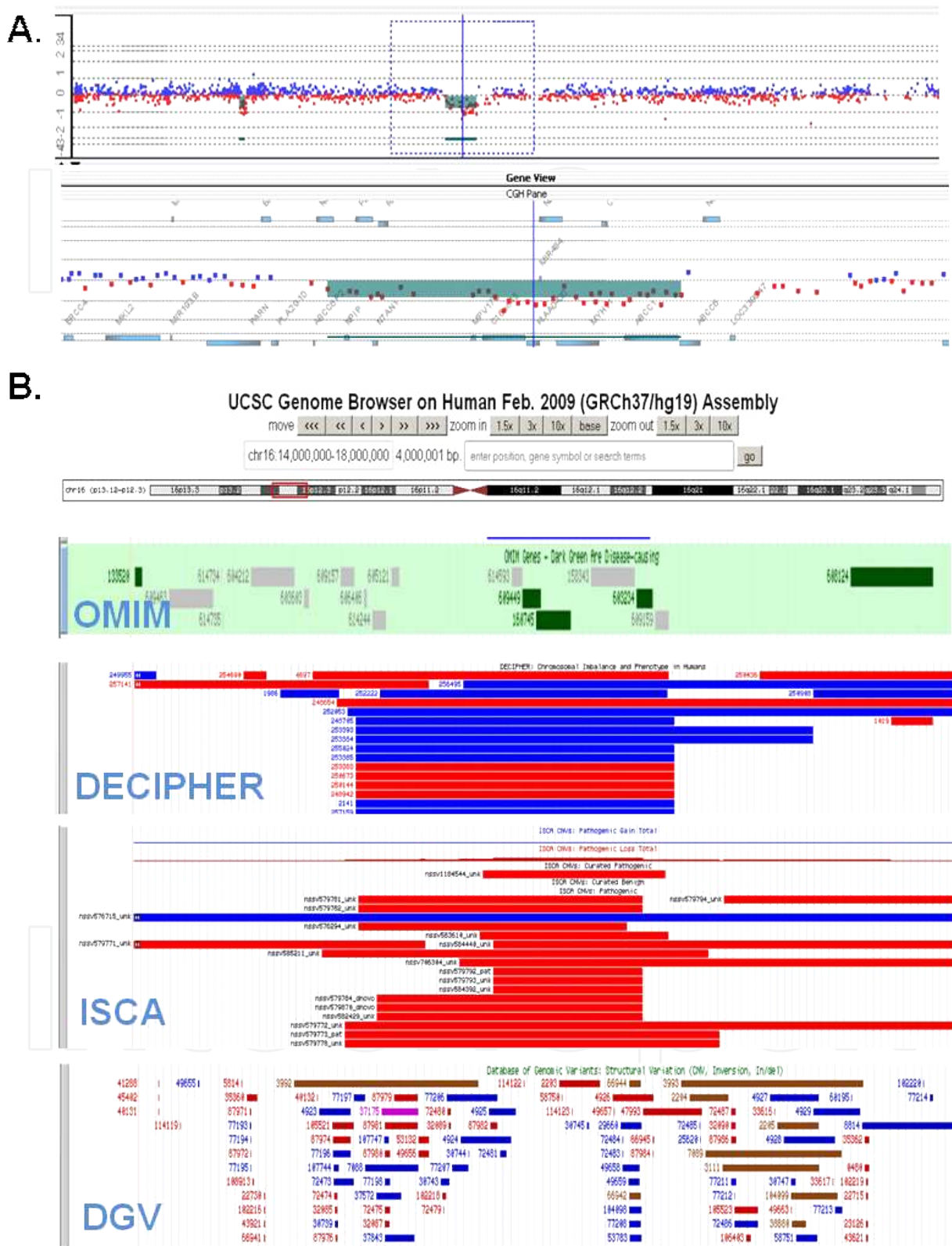


Figure 1. Diagnostic interpretation using web-delivered databases. A. A 16p13.11 deletion detected by Agilent's 180K CGH+SNP array. B. The deleted region is shown in the UCSC genome browser with searchable tracks of OMIM genes, DECIPHER, ISCA and DGV.

Each laboratory that performs genomic analysis should develop its quality control and quality assurance procedures. Proficiency testing for genomic analysis has been implemented by the College of American Pathologists (CAP). Since 2008, two pilot and ten survey challenges of twelve DNA specimens distributed to as many as 74 different laboratories yielded 493 individual responses with a 95.7% mean consensus for matching result interpretations. Responses to supplemental questions indicate that 72% of laboratories use oligonucleotide aCGH and 23% use SNP chips, and array platforms used are increasing in probe density [57].

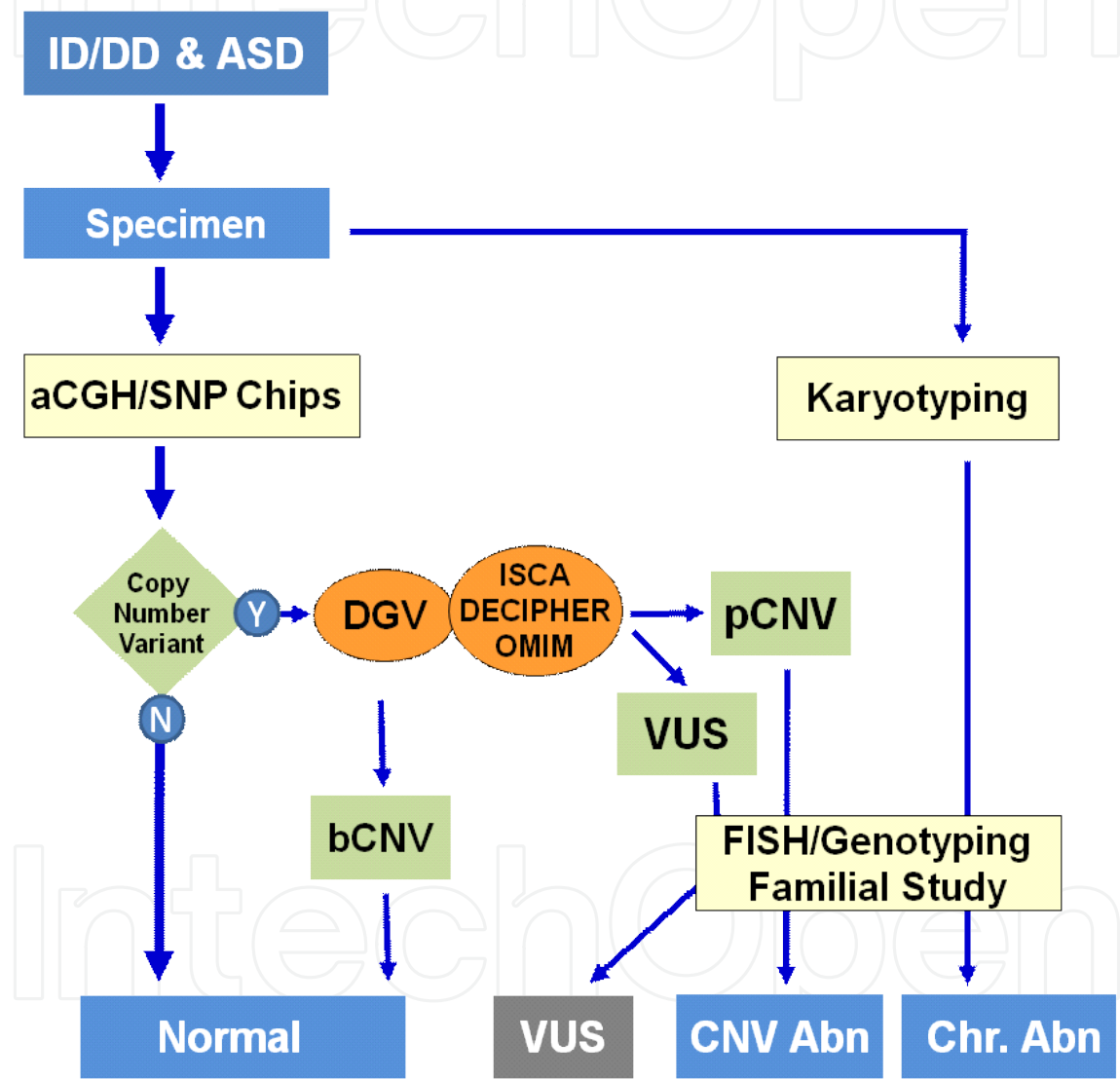


Figure 2. A workflow illustrates the integrated cytogenomic approach for pediatric genetic evaluation. Patients with ID/DD/ASD are tested by aCGH first and limited karyotyping. Detected copy number variants are assessed using web-delivered databases DGV, ISCA, DECIPHER and OMIM to define pCNV, bCNV and VUS. Follow-up confirmatory FISH and genotyping and familial study to determine parental origin of VUS and pCNV are considered.

Taken together, the development of practice guidelines and proficiency testing indicated that the aCGH and SNP chip analyses are becoming the 'gold standard' in clinical diagnosis of chromosomal and genomic abnormalities. As shown in Figure 2, a workflow integrating the

cell-based molecular cytogenetic methods (G-band and FISH), the DNA-based genomic copy number detection (aCGH or SNP chip) and evidence-based result interpretation has been the most efficient and cost-effective diagnostic cytogenomic setting. On the clinical front, pediatric genetic evaluation should be arranged with pre- and post-test consultations by a medical geneticist so that the benefits, limitations, and possible outcomes, as well as the difficulties of interpreting some copy number variants can be discussed in details.

3. Spectrum of cytogenomic abnormalities in ID/DD and ASD

The prevalence of ID/DD and ASD are reported to be 1~3% and 0.67%, respectively [58]. Other common neurodevelopment disorders including speech and language delay, schizophrenia and epilepsy are also subjected for cytogenomic testing. The integrated cytogenomic analysis has significantly improved the diagnostic yield from 3.7-6.8% by molecular cytogenetic analysis [18] to 15-20% by oligonucleotide aCGH or SNP gene chip [47]. The spectrum of cytogenomic abnormalities ranges from large interstitial and subtelomeric imbalances, submicroscopic recurrent genomic disorders, to cryptic oligo-genic to intragenic copy number changes. However, the diagnostic yield could be varied by the criteria of patient referrals and the resolution of genomic analysis. For example, from 2006-2011, there were 1,354 consecutive pediatric patients analyzed by 44K and 180K oligonucleotide aCGH (Agilent) in Yale Cytogenetic Laboratory and pathogenic abnormalities were detected in 176 patients (a 13% diagnostic yield). These abnormalities were classified into chromosomal and cryptic structural abnormalities 95 patients (54%, 95/176), recurrent genomic disorders in 66 patients (37.5%, 66/176), and common aneuploidies in 15 patients (8.5%).

3.1. Chromosomal and cryptic structure abnormalities

With its much higher analytical resolution than chromosome G-banding, genomic analysis can delineate the genomic coordinates and gene contents for almost all chromosomally visible numerical and structural imbalances. This genomic information facilitates fine mapping of critical regions or intervals containing candidate dosage-sensitive genes through subtractive comparison of overlapped deletions and duplications [59-61]. In most recent case reports, the critical regions defined by aCGH or SNP chip have clearly mapped genomic coordinates and accurately defined gene content. As more cases involving similar genomic locus accumulated, the mapping of a critical region can be narrowed down to a few candidate genes or even a single gene. A typical example is the mapping of dosage-sensitive genes associated with microcephaly, corpus callosum agenesis and seizure from chromosome 1q43-q44 deletion syndrome (OMIM#612337). This syndrome is caused by heterogeneous subtelomeric deletions of 1q43-q44. Based on 10 cases of unrelated patients with 1q43-q44 subtelomeric deletions, Van Bon et al. [62] defined a 360 Kb critical region of 1q44 with four candidate genes C1orf100, ADSS, C1orf101 and C1orf121 for corpus callosum abnormality. A series of studies including cases with small interstitial deletions suggested that the nearby genes AKT3, ZNF238 and HNRNPU are more likely the candidate genes [63-67]. A de novo 163 Kb interstitial microdeletion at 1q44 involving only the HNRNPU and FAM36B genes was reported in a boy with

thin corpus callosum, psychomotor delay and seizure [68]. Combined data from these studies supported three critical regions containing AKT3, ZNF238 and HNRNP genes for microcephaly, corpus callosum abnormalities and seizure, respectively. However, the term “corpus callosum abnormalities” associated with 1q44 deletions include a spectrum of developmental aberrations from complete agenesis, partial agenesis, dysgenesis, hypoplasia and thin corpus callosum. The modifying effect from gene interaction or genetic background could also contribute to the phenotype. Further experimental study on gene function and interaction is needed to fully understand the genotype-phenotype correlation.

Genomic analysis can also resolve the genomic structures, mutagenesis mechanisms and mitotic or meiotic behaviors from puzzling chromosomal structural abnormalities like ring chromosomes or supernumerary marker chromosomes [69-71]. For example, ring chromosome 20 syndrome is a rare chromosomal disorder characterized by refractory epilepsy with seizures in wakefulness and sleep, behavior problems and mild to severe cognitive impairment. The aCGH analysis revealed two distinct groups of patients: 75% were mosaic for the r[20] and a normal cell line with no detectable deletions or duplications of chromosome 20 in either cell line and 25% had non-mosaic ring chromosomes with a deletion at one or both ends of the chromosome. The age of onset of seizures inversely correlated with the percentage of cells containing the ring chromosome [72]. Another interesting observation from aCGH applications on two large series is the detection of low-level mosaicism of numerical and structural abnormalities in approximately 0.5% of patients referred for DD/ID/MCA [73, 74]. The authors suggested that the DNA extracted from the white blood cells can reflect mosaic pattern more accurately than culture stimulated lymphocytes. A cytogenomic approach combining cell-based methods of FISH on directly prepared interphase cells and extensive karyotyping on metaphase cells with DNA-based estimation from aCGH log₂ ratio or SNP pattern was proposed for dissecting mosaic patterns [70].

Hidden genomic aberrations in complex chromosomal rearrangements or apparently balanced translocations were also detected by aCGH [75, 76]. Of patients presenting abnormal phenotypes and an apparently balanced translocation, approximately 29-40% has cryptic breakpoint-associated or unrelated imbalances of paternal origin [77, 78]. Several disease-causing mechanisms induced by a balanced translocation including loss of function by gene disruption, gain of function by gene fusion and aberrant expression by positional effect have been demonstrated. For example, Cacciagli et al. [79] detected a de novo balanced translocation t(10;13)(p12;q12) in a patient with severe speech delay and major hypotonia. This translocation disrupted the ATP8A2 gene. This gene is highly expressed in the brain, suggesting the patient's mental disability is likely due to the haploinsufficiency of the ATP8A2 gene. Brownstein et al. [80] reported a case with over-expression of the α -Klotho gene induced by a balanced translocation t(9;13)(q21.13;q13.1) and established the association α -Klotho over-expression with hypophosphatemic rickets and hyperparathyroidism. Application of paired-end genomic sequencing or breakpoint-targeted capture sequencing on five ASD/DD patients carrying a balanced rearrangement revealed unexpected sequence complexity as an underlying feature of karyotyping balanced alterations [81]. Cost-effective diagnostic sequencing analysis for

balanced rearrangements detected in patients with ID/DD/ASD should be implemented in the near future.

3.2. Recurrent genomic disorders

Genomic disorders refer to microdeletions and microduplications mediated by non-allelic homologous recombination (NAHR) within regional low copy repeats (LCRs). A dozen of recurrent genomic disorders such as DiGeorge syndrome caused by a deletion at 22q11.2, Williams-Beuren syndrome (OMIM#194050) by a deletion at 7q11.23, Prader-Willi syndrome and Angelman syndrome by a deletion at 15q11.2 have been recognized clinically and routinely diagnosed by FISH testing. The application of genomic analysis enables not only more accurate diagnosis of these previously recognized genomic disorders but also the detection of many novel recurrent genomic disorders. In 2006, the first genomic disorder identified by aCGH was a 500 Kb microdeletion at 17q21.31 containing the MAPT gene (microtubular associated protein tau) from patients with a clearly recognizable ID, hypotonia and a characteristic face [82, 83]. This later termed Koolen syndrome (OMIM#610443) is caused either by heterozygous mutation in the KANSL1 gene or a 17q21.31 deletion. The KANSL1 gene encodes a nuclear protein that plays a role in chromatin modification. It is a member of histone acetyltransferase (HAT) complex. The reciprocal 17q21.31 microduplication syndrome (OMIM#613533) manifesting some degree of psychomotor retardation and poor social interaction and communication difficulties reminiscent of ASD was reported [84]. Since then, many genomic disorders have been reported, and the diagnosis of these genomic disorders has become an integral part of pediatric genetic evaluation. The aCGH analysis on 15,767 pediatric patients with ID/DD estimated that ~14.2% of them are caused by pCNVs over 400Kb, and approximately 60% of these pCNVs are within 45 known genomic disorder regions [85]. An evidence-based approach was used to establish the functional and clinical significance of the most commonly seen 14 genomic disorders [46]. Table 2 lists the recognized dosage-sensitive genes and estimated penetrance, frequency and prevalence of these 14 recurrent genomic disorders. These most frequently seen genomic disorders represent a 4.5% (1/22) diagnostic yield in pediatric patients and an estimated 0.18% (1/550) prevalence in a general population. A study of human populations for the polymorphic inversions at 17q21.31 observed that the H2 haplotype occurred at the highest frequencies in South Asian and Southern Europe; this H2 haplotype is susceptible to de novo deletions that lead to developmental delay and learning difficulties [86]. Population genetic studies for genomic disorders of other loci could define predisposing genomic structures and recurrence risk for different ethnic groups at different geographic regions.

The microdeletion and microduplication of the same genomic locus offer an opportunity to study dosage-sensitive genes, especially for the opposite phenotypes of haploinsufficient and triple-sensitive genes. Although clinical evaluation has been complicated by overlapped phenotypes, variable expressivity and reduced penetrance for many newly-defined genomic disorders, opposite phenotypes have been seen in a few genomic disorders. Comparison of clinical features of 7q11.23 microdeletion for Williams syndrome with reciprocal microduplication syndrome (OMIM#609757) noted different neurologic and behavior problems. The

Chromosome G-band	Genomic locus (Mb in hg18)	Dosage- sensitive genes	Abn.*	Clinical features (OMIM#)*	Penetrance* *	Ref #46 (15,749 cases)	Ref #85 (15,767 cases)	Frequency (31,516)†	Est. prevalence‡	
22q11.2	17.4-18.7	TBX1	del	DiGeorge syndorme (188400)	1	93	96	1/167	1 in 4,000	
			dup	22q11.2 duplication syndrome (608363)	0.91	32	50	1/384	1 in 9,200	
16p11.2	29.5-30.1	TBX6, KCTD13	del	Autism, Obsity (611913)	0.96	67	64	1/241	1 in 5,800	
			dup	Autism, underweight	0.93	39	28	1/470	1 in 11,300	
1q21.1	145.0-146.4	HYDIN2	del	1q21.1 deletion syndrome (612474)	0.96	55	47	1/309	1 in 7,400	
			dup	1q21.1 duplication syndrome (612475)	0.96	28	26	1/584	1 in 14,000	
15q13.2-q13.3	28.7-30.3	CHRNA7	del	15q13.3 microdeletion syndrome (612001)	1	46	42	1/358	1 in 8,600	
			dup	Psychiatric disease	0.87	14	20	1/927	1 in 22,200	
7q11.23	72.2-77.5	ELN, GTF21	del	Williams syndrome (194050)	1	34	42	1/414	1 in 10,000	
		FZD9, LIMK1	dup	7q11.23 duplication syndrome (609757)	1	16	16	1/985	1 in 23,600	
15q11.2-q13	22.3-26.1	GABRA5	del	Prader-Willi (176270)/Angelman syndromes (105830)	1	41	16	1/552	1 in 13,300	
			dup	15q11-q13 duplication syndrome (608636)	1	35	27	1/508	1 in 12,200	
17q21.31	41.0-41.7	MAPT, KANSL1	del	17q21.31 deletion syndrome (610443)	1	22	23	1/700	1 in 16,800	
			dup	17q21.31 duplication syndrome (613533)	0.43	21	2	1/1,370	1 in 32,900	
16p13.11	15.4-16.2	MYH11	del	Autism, ID, and schizophrenia	0.86	22	18	1/788	1 in 18,900	
			dup	Variable phenotype	0.71	45	24	1/457	1 in 11,000	
17p11.2	16.6-20.4	RAI1	del	Smith-Magenis syndrome (182290)	1	16	16	1/985	1 in 23,600	
			dup	Potocki-Lupski syndrome (610883)	1	15	9	1/1,313	1 in 31,500	
17q12	31.9-33.3	TCF2	del	Renal cysts and diabetes (137920)	0.88	18	14	1/985	1 in 23,600	
			dup	Epilepsy	0.86	21	18	1/808	1 in 19,400	
1q21	144.1-144.5	HFE2	del	Thrombocytopenia-absent radius syndrome (274000)	0.87	17	13	1/1,050	1 in 25,200	
			dup	1q21.2 duplication	0.81	9	25	1/927	1 in 22,200	
8p23.1	8.1-11.8	SOX7, CLDN23	del	8p23.1 deletion syndrome	1	10	7	1/1,853	1 in 44,500	
			dup	Variable phenotype	1	6	7	1/2,424	1 in 58,200	
5q35	175.6-176.9	NSD1	del	Sotos syndrome (117550)	1	8	8	1/1,969	1 in 47,300	
			dup	Short stature, microcephaly, speech delay	n/a	2	0	1/15,758	1 in 378,200	
3q29	197.2-198.8	DLG1	del	3q29 microdeletion syndrome (609425)	1	9	6	1/2,101	1 in 50,400	
			dup	3q29 duplication syndrome (611936)	1	8	4	1/2,626	1 in 63,000	
Total									1 in 22	1 in 550

* Abn., abnormality; del, deletion; dup, duplication, OMIM#, Online Mendelian Inheritance in Man

** Penetrance of syndromic phenotypes was from Cooper et al. 2011

†Frequency of each genomic disorder was calculated by case numbers from kaminsky et al (ref.#46) and Cooper et al (Ref #85); the frequency of 14 genomic disorders is 1/22 of pediatric ID/DD/MCA/ASD patients.

‡ Prevalence was estimated by multiply frequency by 0.04 (using 4% for DD/ID/MCA/Autism in a general population); the prevalence of 14 genomic disorders is 1/550 in a general population

Table 2. Prevalence and penetrance of common genomic disorders from two large patient-control series

7q11.23 microdeletion shows relative strength in expressive language and excessive sociability. To the contrary, the 7q11.23 microduplication has speech and language delay, deficit of social interaction and aggressive behavior. The FZD9, LIMK1, CLIP2 and GTF21RD1 genes have been suggested to be the candidate genes for neurologic and behavior phenotypes [87]. Microdeletion syndrome at 16p11.2 (OMIM#611913) and microduplication syndrome at 16p11.2 (OMIM#614671) were initially associated with ASD [88] but a subsequent study revealed mirror body mass index phenotypes [89]. Microdeletion at 16p11.2 is often associated with obesity, macrocephaly and ASD, while reciprocal microduplication is associated with underweight, microcephaly and schizophrenia. Chromosome 1q21.1 microdeletion syndrome (OMIM#612474) and the reciprocal 1q21.1 microduplication syndrome (IMIM#612475) associated with microcephaly or macrocephaly and developmental and behavioral abnormalities, respectively [90-92]. Brunetti-Pierri et al. [91] suggested that the HYDIN paralog located in the 1q21 interval is a dosage-sensitive gene exclusively expressed in brain; HYDIN haploinsufficiency is responsible for the microcephaly and HYDIN triple-sensitive effect is for the macrocephaly.

Reciprocal microdeletion and duplication could present distinct, overlapping or similar phenotype likely caused by the same dosage-sensitive gene. Hereditary neuropathy with liability to pressure palsies (HNPP) (OMIM#162500) is caused by a microdeletion of the PMP22 gene at 17p11.2 and Charcot-Marie-Tooth Neuropathy type 1A (OMIM#118220) is caused by a reciprocal microduplication. Both present demyelinating neuropathies but the phenotypes are distinct. Smith-Magenis syndrome is caused by a microdeletion at 17p11.2 involving the RAI1 gene and Potocki-Lupski syndrome is caused by the reciprocal microduplication. In human, both syndromes show variable mental retardation, motor and speech delay, sleep disturbance, behavior problems and autistic features. In mouse models, mice with RAI1 deletion show hypoactive, decreased anxiety and decreased dominance like behavior. To the contrary, mice with RAI1 duplication show hyperactive, increased anxiety and increased dominance behavior [93]. All these findings indicate the presence of different type of dosage-sensitive genes and the importance of careful and detailed clinical observations and functional understanding of multiple and complex dosage-sensitive mechanisms.

3.3. UPD (uniparental disomy), AOH (absence of heterozygosity) and VUS (variants of unknown significance)

UPD is defined as the inheritance of both homologs of a chromosome pair from a single parent. When both homologs are from that parent, it is denoted as heterodisomy or heteroUPD. If both copies are from one parental homolog, it is termed as isodisomy or isoUPD. UPD of chromosomes 6, 7, 11, 14 and 15 have been known to cause diseases. Paternal UPD of chromosome 15, patUPD15, causes Prader-Willi syndrome while maternal UPD, matUPD15 causes Angelman syndrome. Segmental duplication of maternal 11p15 or paternal deletion of 11p15 causes decreased expression of IGF2, manifesting with impaired growth for Silver-Russell syndrome. Segmental duplication of paternal 11p15, paternal UPD, or maternal imprinting mutations of 11p15 lead to increased expression of IGF2, manifesting with overgrowth for Beckwith-Wiedemann syndrome [94]. Current validated CGH-SNP aCGH and SNP chip can detect

chromosomal and segmental isoUPD but the detection of heteroUPD requires concurrent parental study [36-38]. The clinical significance of AOH segments is not clear. One possible disease-causing mechanism could be the presence of autosomal recessive phenotype by the doubling of a single mutation within the AOH segment. Other findings such as VUSs detected in approximately 9.3% of pediatric cases will require follow up parental study to determine the parental origin of VUS and even further functional analysis to understand their clinical significance [46].

4. Mapping candidate genes and understanding dosage-sensitive mechanisms

The characterization of genomic coordinates of pathogenic chromosomal and genomic abnormalities in patients with ID/DD/MCA and ASD provides the opportunities to map dosage-sensitive genes. Genomic imprinting is a known dosage-sensitive mechanism regulating gene expression from only the paternal or maternal genes. By stringent definition, a dosage-sensitive gene will cause opposite phenotypes by haploinsufficiency in a deletion and triple-overdose in a duplication. However, ascertainment bias could be introduced due to assumed more severe phenotype in a deletion than a duplication. An accurate genotype-phenotype correlation will require systematic and replicate studies on large case-control series. For all newly-defined genomic disorders, more family-based and case-control pathophysiology and disease course studies as well as functional studies in *in vitro* cellular models or *in vivo* animal models are needed. Functional characterization of dosage-sensitive mechanisms will provide better understanding of human development and rational intervention for ID/DD/MCA and ASD.

4.1. *In Silico* mining revealing interacting brain expressed gene from cytogenomic abnormalities

The development of high-throughput genomic techniques has prompted the introduction of numerous bioinformatic data mining tools to study gene function and interaction. It has been hypothesized that brain expressed genes and their interaction could play important roles in human mental development. *In Silico* bioinformatic analyses have been used to identify candidate genes and functional interactions from a small case series of pediatric patients and a large case-control study of ASD patients [95, 96]. It has been hypothesized that ID phenotype from different pCNVs and segmental imbalances may be caused by the functional disturbance of genes in interacting pathways or networks. To reveal candidate brain-expressed genes (BEGs) and their interacting networks from detected cytogenomic abnormalities, a discovery-driven *in silico* analysis using bioinformatic tools was performed [97]. Of the 1,354 patients analyzed by oligonucleotide array comparative genomic hybridization (aCGH) in a five-year interval in Yale cytogenetics lab, pathogenic abnormalities were detected in 176 patients, including recurrent genomic disorders in 66 patients, subtelomeric rearrangements in 45 patients, interstitial imbalances in 33 patients, chromosomal structural rearrangements in 17

patients and aneuploidies in 15 patients. Subtractive mapping of bCNV and extractive constructing of smallest overlapped regions defined 82 disjointed critical regions from the detected abnormalities. All genes from these critical regions were sorted by functional annotation using Database for Annotation, Visualization, and Integrated Discovery (DAVID) and by tissue expression pattern from Uniprot. A list of 461 BEGs generated from 73 disjointed critical regions was denoted. Enrichment of central nervous system specific genes in these regions was noted, and the number of BEGs increased with the size of the regions. Further gene prioritization using Gene Relationships Across Implicated Loci (GRAIL) identified candidate BEGs with significant cross region interrelation from data sources of PubMed abstract, gene ontology terms and expression pattern. Figure 3 shows the cross-loci interactions of gene ontology from detected deletions and duplications. This result implied shared cellular component and biological process from the defined candidate BEGs. Pathway analysis using Ingenuity Pathway Analysis (IPA) denoted five significant gene networks involving cell cycle, cell-to-cell signaling, cellular assembly, cell morphology, and gene expression regulations. Previous studies and our preliminary data support a model of polygenic interactions and multiple functional networks for human mental development. Further experimental study on the cellular function of these candidate genes and their interactions will lead to a better understanding of dosage-sensitive mechanisms.

4.2. *In vitro* cellular phenotyping and *in vivo* animal modeling

Little is known about the cellular and developmental functions of many newly identified dosage-sensitive genes. The understanding of dosage-sensitive mechanism for specific gene or pathway could lead to targeted treatment using protein inhibitor or small RNA interference. The limited availability and accessibility of live brain and neuron tissues is the major obstacle in the study of disease-causing mechanisms in human mental development. Recent progress in stem cell technologies has made possible the modeling of disease using patient derived stem cells. In 2010, Marchetto et al. [98] developed a culture system using induced pluripotent stem cells (iPSCs) from Rett syndrome patients' fibroblasts. These Rett syndrome iPSCs were able to undergo X-inactivation and generate functional neurons. Neurons derived from these iPSCs had fewer synapses, reduced spine density, smaller soma size, altered calcium signaling and electrophysiological defects when compared to controls. This cellular model provided critical evidence of an unexplored developmental window before disease onset and enable direct testing of drug effect in rescuing synaptic defects. Similarly, *Bona fide* iPCs were generated from fibroblasts of a patient with Prader-Willi syndrome bearing 4p/15q translocation [99]. These iPSCs retained the DNA methylation in the imprinting center of maternal allele and reduced the expression of the disease-associated SNRPN gene, therefore, could be differentiated into neuron tissue to modeling cellular phenotype. Using skin fibroblasts from affected patients or amniocytes from prenatal diagnosis tests, iPCs for monosomy X (Turner syndrome), trisomy 8 (Warkany syndrome 2), trisomy 13 (Patau syndrome) and partial trisomy 11;22 (Emanuel syndrome) were generated for further studies of global gene expression and tissue-specific differentiation [100]. All these reports indicated that stem cell technology offers reproducible *in vitro* cellular phenotypes for better understanding of neurodevelopment and also a testable system for the development of therapeutical approach [101].

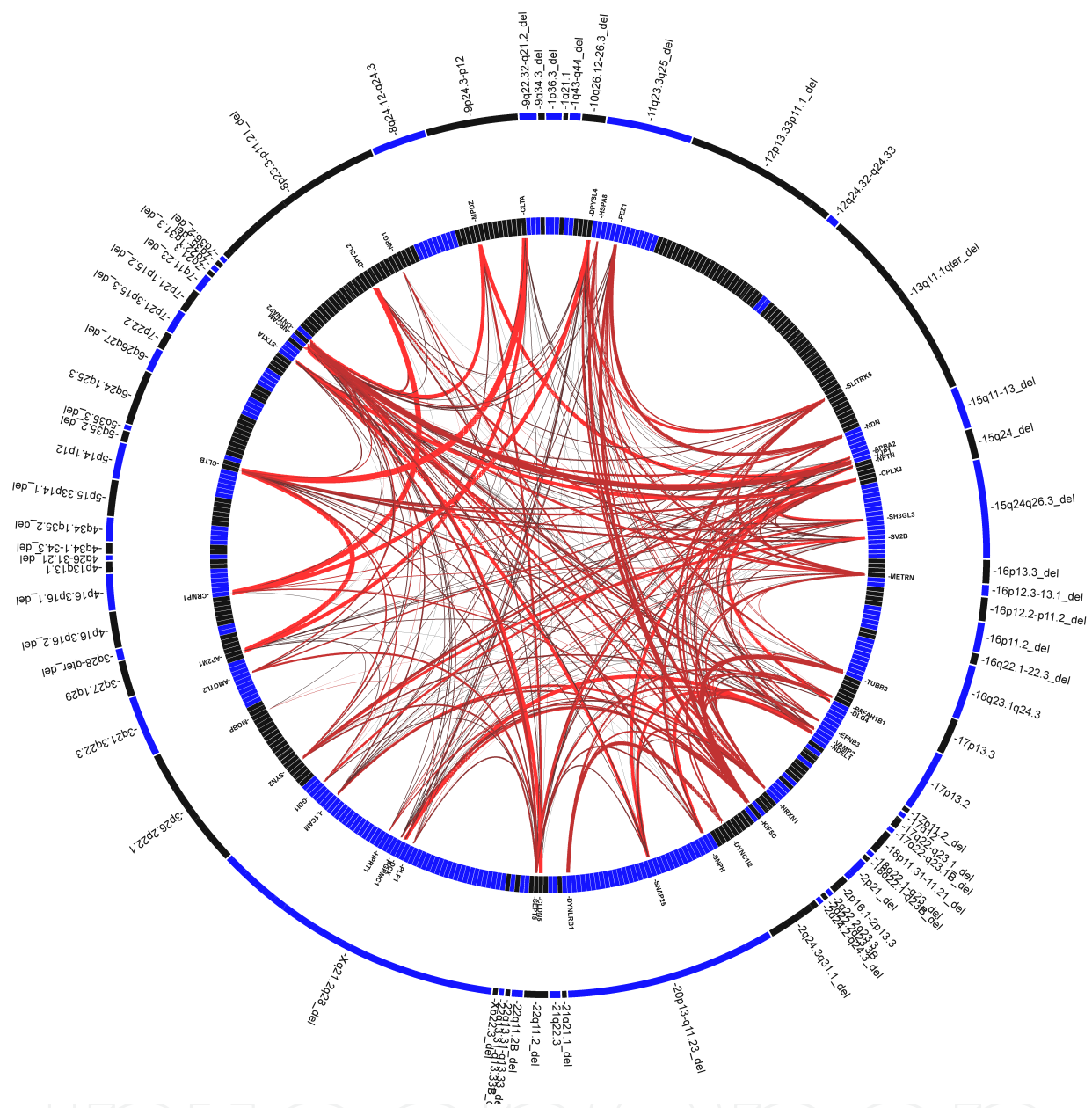


Figure 3. *in silico* bioinformatic mining of cross-loci gene interaction for intellectual disability. The double circle plots depict the gene relationships across the abnormal regions by GRAIL based on gene ontology data source. Outer circle represents abnormal regions, of which the G-band regions with '_del' are denoted deletions and the other regions are duplications. The inner circle stands for genes located in the corresponding regions in the outer circle, and for clear visualization only significant genes ($p < 0.001$) and their connections are shown. The lines represent pair-wise gene connections, with the thickness of the lines indicating the degree functional similarity

In vivo animal models generated by genetic manipulation have also been used to study cytogenomic abnormalities. Mouse models of 16p11.2 deletion and duplication detected *in vivo* brain anomalies and behavior disorders [102]. Overexpression and transcript suppression of the 29 candidate genes from this 16p11.2 region in zebrafish identified the KCTD13 gene as a major driver of the mirrored neuroanatomical phenotypes [103]. Although the physiology and genetic makeup in the model animals are different from human, the animal models allow

direct evaluation of gene-dosage effects and association of neuroanatomical defects with phenotypes. Figure 4 shows modeling of human cytogenomic abnormalities using stem cell technology and animal model and the potential application in drug development.

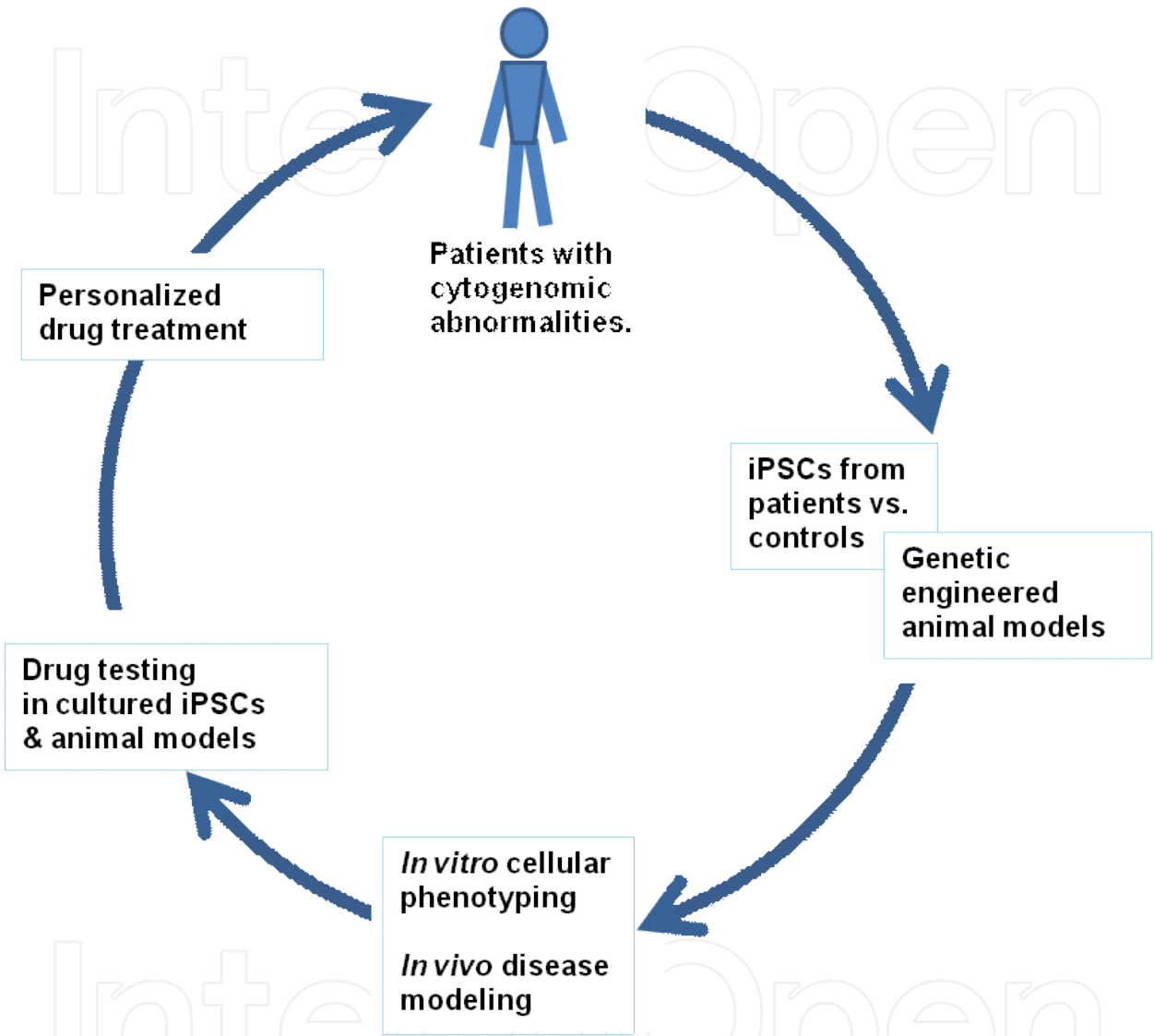


Figure 4. Using *in vitro* cellular phenotyping and *in vivo* animal modeling for cytogenomic abnormalities. To study gene functions and disease causing mechanisms, iPSCs derived from affected patients with detected pCNVs are used for *in vitro* cellular phenotyping and genetic engineered animal models are used for *in vivo* disease pathophysiology. This cellular and animal models can also be used to screen drug for potential treatment of cytogenomic abnormalities.

5. Future directions and concluding remarks

In the first decade since the completion of the Human Genome Project, we have witnessed the rapid development of genomic technologies and the integration of genomic analysis into

pediatric genetic evaluation. The experiences from current genomic analysis revealed a systematic approach including the evaluation of analytical validity of novel technologies using ROC statistics, the assessment of clinical validity through case series or clinical trials, the establishment of clinical evidence of detected genomic variants by large scale case-control studies, and the development of practice standards and guidelines as well as web-deliverable databases and resources. This approach will be effective for the integration of the next-generation exome sequencing and the next-next generation genomic sequencing technologies into clinical screening and diagnosis. However, the increased technical complexity of exome or genomic sequencing and the intellectual challenge to interpret a large amount of sequencing data will require more collaborative effort and supportive resources. The ultimate goal for an integrated pediatric and prenatal genetic evaluation is to provide comprehensive and in-depth profiling of karyotype, pCNV and mutations and associated medical phenotypes and risks for patients.

The aCGH or SNP chip analysis has brought pediatric genetic evaluation into the genomic era. This progress has contributed greatly to our understanding of genetic etiology in 12%-20% of pediatric patients with DD/ID/MCA/ASD. In addition to the technical progress in genetic diagnosis, the implementations of knowledge-based genetic counseling, rational clinical action and follow up familial studies could be of direct benefit for a substantial proportion of patients [104, 105]. For example, the aggressive behavior from patients with a 15q13.3 deletion involving the CHRNA7 gene could benefit from treatment with the NChR allosteric modulator and acetylcholinesterase (AChE) inhibitor, galantamine [106]. As we gain more knowledge of these genomic abnormalities through functional analysis using *in vitro* cellular and *in vivo* animal models, disease-specific guidance management and treatment could be developed, culminating in fully personalized medicine.

Web resources

Database of Genomic Variants (DGV): <http://projects.tcag.ca/variation/>

International Standards for Cytogenomic Arrays (ISCA): <https://www.iscaconsortium.org/>

DatabasE of Chromosomal Imbalance and Phenotype in Humans using Ensembl Resources (DECIPHER): <http://decipher.sanger.ac.uk/>

Human Genome Browser: <http://genome.ucsc.edu/>

Online Mendelian Inheritance in Man: <http://www.ncbi.nlm.nih.gov/omim>

Database for Annotation, Visualization, and Integrated Discovery (DAVID) (<http://david.abcc.ncifcrf.gov/>)

Gene Relationships Across Implicated Loci (<http://www.broadinstitute.org/mpg/grail/>)

Ingenuity Pathways Analysis (Ingenuity Systems Inc. <http://www.ingenuity.com/>)

Author details

Fang Xu and Peining Li*

Laboratory of Molecular Cytogenetics and Genomics, Department of Genetics, Yale University School of Medicine, New Haven, USA

References

- [1] Smeets DFCM. Historical prospective of human cytogenetics: from microscope to microarray. *Clinical Biochemistry* 2004;37:439-46.
- [2] Li MM, Andersson HC. Clinical application of microarray-based molecular cytogenetics: An emerging new era of genomic medicine. *The Journal of Pediatrics* 2009;155:311-7.
- [3] Grayton HM, Fernandes C, Rujescu D, Collier DA. Copy number variations in neurodevelopmental disorders. *Progress in Neurobiology* 2012;99:81-91.
- [4] Tjio JH, Levan A. The chromosome number of Man. *Hereditas* 1956;42:1-6.
- [5] Hsu TC. Mammalian chromosome *in vitro*: I. The karyotype of Man. *Journal of Heredity* 1952;43:167-72.
- [6] Lejeune J, Gautier M, Turpin R. Etude des chromosomes somatiques de neuf enfants mongoliens. *Comptes Rendus* 1959;248:17211-22.
- [7] Ford CE, Jones KW, Polani PE, de Almeida JC, Briggs JH.. A sex-chromosome anomaly in a case of gonadal dysgenesis (Turner's syndrome). *Lancet* 1959; 1:711-3.
- [8] Jacobs PA, Strong JA. A case of human intersexuality having a possible XXY sex-determining mechanism. *Nature* 1959;183:302-303.
- [9] Patau K, Smith DW, Therman E, Inhorn SI, Wagner HP. Multiple congenital anomaly caused by an extra autosome. *Lancet* 1960;1:790-3.
- [10] Edwards JH, Harnden DG, Cameron AH, Crosse VM, Wolff OH. A new trisomic syndrome. *Lancet* 1960; 1:787-790.
- [11] Caspersson T, Farber S, Foley GE, Kudynowski J, Modest EJ, Simonsson E, Wagh U, Zech L. Chemical differentiation along metaphase chromosomes. *Experimental Cell Research* 1968;49:219-22.
- [12] Shaffer LG, McGowan-Jordan J, Schmid M (eds). *ISCN (2013): An international system for human cytogenetic nomenclature*, S.Karger, Basel 2013.
- [13] Wyandt HE, Tonk VS (eds). *Atlas of human chromosome heteromorphisms*. Kluwer Academic Publishers; 2004.
- [14] Brothman AR, Schneider NR, Saikevych I, Cooley LD, Butler MG, Patil S, Mascarello JT, Rao KW, Dewald GW, Park JP, Persons DL, Wolff DJ, Vance GH. *Cytogenetics Resource Committee, College of American Pathologists/American College of Medical*

Genetics. Cytogenetic heteromorphisms: survey results and reporting practices of giemsa-band regions that we have pondered for years. *Archives Pathology & Laboratory Medicine* 2006; 130:947-9.

- [15] Langer-Safer PR, Levine M, Ward DC. Immunological method for mapping genes on *Drosophila* polytene chromosomes. *Proceedings of the National Academy of Sciences USA* 1982;79(14):4381-5.
- [16] Ried T, Landes G, Dackowski W, Klinger K, Ward DC. Multicolor fluorescence in situ hybridization for the simultaneous detection of probe sets for chromosomes 13, 18, 21, X and Y in uncultured amniotic fluid cells. *Human Molecular Genetics* 1992;5:307-13.
- [17] Ning Y, Roschke A, Smith AC, Macha M, Precht K, Riethman H, Ledbetter DH, Flint J, Horsley S, Regan R, Kearney L, Knight S, Kvaloy K, Brown WRA. A complete set of human telomeric probes and their clinical application. *Nature Genetics* 1996; 14:86-9.
- [18] Shaffer LG, American College of Medical Genetics Professional Practice and Guidelines Committee. American College of Medical Genetics guideline on the cytogenetic evaluation of the individual with developmental delay or mental retardation. *Genetics in Medicine* 2005; 7:650-4.
- [19] Kallioniemi A, Kallioniemi OP, Sudar D, Rutovitz D, Gray JW, Waldman F, Pinkel D. Comparative genomic hybridization for molecular cytogenetic analysis of solid tumors. *Science* 1992; 258:818-21.
- [20] Schena M, Shalon D, Davis RW, Brown PO. Quantitative monitoring of gene expression patterns with a complementary DNA microarray. *Science* 1995; 270:467-70.
- [21] Pinkel D, Segreaves R, Sudar D. High resolution analysis of DNA copy number variation using comparative genomic hybridization to microarrays. *Nature Genetics* 1998; 20:207-11.
- [22] Snijders AM, Nowak N, Segreaves R, Blackwood S, Brown N, Conroy J, Hamilton G, Hindle AK, Huey B, Kimura K, Law S, Myambo K, Palmer J, Ylstra B, Yue JP, Gray JW, Jain AN, Pinkel D, Albertson DG. 2001. Assembly of microarrays for genome-wide measurement of DNA copy number. *Nature Genetics* 2001; 29:263-64.
- [23] Iafrate AJ, Feuk L, Rivera MN, Listwnik ML, Donahoe PK, Qi Y, Scherer SW, Lee C. Detection of large-scale variation in the human genome. *Nature Genetics* 2004; 36:949-51.
- [24] Redon R, Ishikawa S, Fitch KR, Feuk L, Perry GH, Andrews TD, Fiegler H, Shapero MH, Carson AR, Chen W, Cho EK, Dallaire S, Freeman JL, González JR, Gratacòs M, Huang J, Kalaitzopoulos D, Komura D, MacDonald JR, Marshall CR, Mei R, Montgomery L, Nishimura K, Okamura K, Shen F, Somerville MJ, Tchinda J, Valsesia A, Woodwark C, Yang F, Zhang J, Zerjal T, Zhang J, Armengol L, Conrad DF, Estivill X, Tyler-Smith C, Carter NP, Aburatani H, Lee C, Jones KW, Scherer SW, Hurles ME. Global variation in copy number in the human genome. *Nature* 2006; 444:444-54.
- [25] Vissers LE, de Vries BB, Osoegawa K, Janssen IM, Feuth T, Choy CO, Straatman H, van der Vliet W, Huys EH, van Rijk A, Smeets D, van Ravenswaaij-Arts CM, Knoers

- NV, van der Burgt I, de Jong PJ, Brunner HG, van Kessel AG, Schoenmakers EF, Veltman JA. Array-based comparative genomic hybridization for the genomewide detection of submicroscopic chromosomal abnormalities. *American Journal of Human Genetics* 2003; 73:1261-70.
- [26] Shaw-Smith C, Redon R, Rickman L, Rio M, Willatt L, Fiegler H, Firth H, Sanlaville D, Winter R, Colleaux L, Bobrow M, Carter NP. Microarray based comparative genomic hybridisation (array-CGH) detects submicroscopic chromosomal deletions and duplications in patients with learning disability/mental retardation and dysmorphic features. *Journal of Medical Genetics* 2004; 41:241-8.
- [27] Schoumans J, Ruivenkamp C, Holmberg E, Kyllerman M, Anderlid BM, Nordenskjöld M. Detection of chromosomal imbalances in children with idiopathic mental retardation by array based comparative genomic hybridization (array-CGH). *Journal of Medical Genetics* 2005; 42:699-705.
- [28] Friedman JM, Baross A, Delaney AD, Ally A, Arbour L, Armstrong L, Asano J, Bailey DK, Barber S, Birch P, Brown-John M, Cao M, Chan S, Charest DL, Farnoud N, Fernandes N, Flibotte S, Go A, Gibson WT, Holt RA, Jones SJ, Kennedy GC, Krzywinski M, Langlois S, Li HI, McGillivray BC, Nayar T, Pugh TJ, Rajcan-Separovic E, Schein JE, Schnerch A, Siddiqui A, Van Allen MI, Wilson G, Yong SL, Zahir F, Eydoux P, Marra MA. Oligonucleotide microarray analysis of genomic imbalances in children with mental retardation. *American Journal of Human Genetics* 2006; 79:500-13.
- [29] Holtzman NA, Watson MS. Promoting safe and effective genetic testing in the United States: Final report of the task force on genetic testing. The Johns Hopkins University Press, 1998.
- [30] Yu W, Ballif BC, Kashork CD, Heilstedt HA, Howard LA, Cai WW, White LD, Liu W, Beaudet AL, Bejjani BA, Shaw CA, Shaffer LG. Development of a comparative genomic hybridization microarray and demonstration of its utility with 25 well-characterized 1p36 deletions. *Human Molecular Genetics* 2003; 12:2145-52.
- [31] Cheung SW, Shaw CA, Yu W, Li J, Ou Z, Patel A, Yatsenko SA, Cooper ML, Furman P, Stankiewicz P, Lupski JR, Chinault AC, Beaudet AL. Development and validation of aCGH microarray for clinical cytogenetic diagnosis. *Genetics in Medicine* 2005; 7: 422-32.
- [32] Xiang B, Li A, Valentin D, Novak N, Zhao H-Y, Li P. 2008. Analytical and clinical validity of whole genome oligonucleotide array comparative genomic hybridization for pediatric patients with mental retardation and developmental delay. *American Journal of Medical Genetics* 2008; 146A: 1942-54.
- [33] Baldwin EL, Lee JY, Blake DM, Bunke BP, Alexander CR, Kogan AL, Ledbetter DH, Martin CL. Enhanced detection of clinically relevant genomic imbalances using a targeted plus whole genome oligonucleotide microarray. *Genetics in Medicine* 2008;10:415-29.
- [34] Neill NJ, Torchia BS, Bejjani BA, Shaffer LG, Ballif BC. Comparative analysis of copy number detection by whole-genome BAC and oligonucleotide array CGH. *Molecular Cytogenetics* 2010;3:11.

- [35] Zhang ZF, Ruivenkamp C, Staaf J, Zhu H, Barbaro M, Petillo D, Khoo SK, Borg A, Fan YS, Schoumans J. Detection of submicroscopic constitutional chromosome aberrations in clinical diagnostics: a validation of the practical performance of different array platforms. *European Journal of Human Genetics* 2008;16:786-92.
- [36] Schaaf CP, Wiszniewska J, Beaudet AL. Copy number and SNP arrays in clinical diagnostics. *Annual Review of Genomics and Human Genetics* 2011;12:25-51.
- [37] Papenhausen P, Schwartz S, Risheg H, Keitges E, Gadi I, Burnside RD, Jaswaney V, Pappas J, Pasion R, Friedman K, Tepperberg J, UPD detection using homozygosity profiling with a SNP genotyping microarray. *American Journal of Medical Genetics* 2011;155A:757-68.
- [38] Tucker T, Schlade-Bartusiak K, Eydoux P, Nelson TN, Brown L. Uniparental disomy: can SNP array data be used for diagnosis? *Genetics in Medicine* 2012;14:753-56.
- [39] Boone PM, Bacino CA, Shaw CA, Eng PA, Hixson PM, Pursley AN, Kang SH, Yang Y, Wiszniewska J, Nowakowska BA, del Gaudio D, Xia Z, Simpson-Patel G, Immken LL, Gibson JB, Tsai AC, Bowers JA, Reimschisel TE, Schaaf CP, Potocki L, Scaglia F, Gambin T, Sykulski M, Bartnik M, Derwinska K, Wisniowiecka-Kowalnik B, Lalani SR, Probst FJ, Bi W, Beaudet AL, Patel A, Lupski JR, Cheung SW, Stankiewicz P. Detection of clinically relevant exonic copy-number changes by array CGH. *Human Mutation* 2010;31:1326-42.
- [40] Aradhya S, Lewis R, Bonaga T, Nwokekeh N, Stafford A, Boggs B, Hruska K, Smaoui N, Compton JG, Richard G, Suchy S. Exon-level array CGH in a large clinical cohort demonstrates increased sensitivity of diagnostic testing for Mendelian disorders. *Genetics in Medicine* 2012;14:594-603.
- [41] Shearer BM, Thorland EC, Gonzales PR, Ketterling RP. Evaluation of a commercially available focused aCGH platform for the detection of constitutional chromosome anomalies. *American Journal of Medical Genetics* 2007;143A:2357-70.
- [42] Shaffer LG, Beaudet AL, Brothman AR, Hirsch B, Levy B, Martin CL, Mascarello JT, Rao KW, Working Group of the Laboratory Quality Assurance Committee of the American College of Medical Genetics. Microarray analysis for constitutional cytogenetic abnormalities. *Genetics in Medicine* 2007;9:654-62.
- [43] Shen Y, Irons M, Miller DT, Cheung SW, Lip V, Sheng X, Tomaszewicz K, Shao H, Fang H, Tang HS, Irons M, Walsh CA, Platt O, Gusella JF, Wu BL. Development of a focused oligonucleotide-array comparative genomic hybridization chip for clinical diagnosis of genomic imbalance. *Clinical Chemistry* 2007;53:2051-9.
- [44] Yu S, Bittel DC, Kibiryeva N, Zwick DL, Cooley LD. Validation of the Agilent 244K oligonucleotide array-based comparative genomic hybridization platform for clinical cytogenetic diagnosis. *American Journal of Clinical Pathology* 2009;132:349-60.
- [45] Xiang B, Zhu H, Shen Y, Miller DT, Lu K, Hu X, Andersson HC, Narumanchi TM, Wang Y, Martinez JE, Wu B-L, Li P, Li MM, Chen T-J, Fan Y-S. Genome-wide oligonucleotide array CGH for etiological diagnosis of mental retardation: A multi-center experience of 1,499 clinical cases. *Journal of Molecular Diagnosis* 2010;12:204-12.

- [46] Kaminsky EB, Kaul V, Paschall J, Church DM, Bunke B, Kunig D, Moreno-De-Luca D, Moreno-De-Luca A, Mulle JG, Warren ST, Richard G, Compton JG, Fuller AE, Gliem TJ, Huang S, Collinson MN, Beal SJ, Ackley T, Pickering DL, Golden DM, Aston E, Whitby H, Shetty S, Rossi MR, Rudd MK, South ST, Brothman AR, Sanger WG, Iyer RK, Crolla JA, Thorland EC, Aradhya S, Ledbetter DH, Martin CL. An evidence-based approach to establish the functional and clinical significance of copy number variants in intellectual and developmental disabilities. *Genetics in Medicine* 2011;13:777-84.
- [47] Miller DT, Adam MP, Aradhya S, Biesecker LG, Brothman AR, Carter NP, Church DM, Crolla JA, Eichler EE, Epstein CJ, Faucett WA, Feuk L, Friedman JM, Hamosh A, Jackson L, Kaminsky EB, Kok K, Krantz ID, Kuhn RM, Lee C, Ostell JM, Rosenberg C, Scherer SW, Spinner NB, Stavropoulos DJ, Tepperberg JH, Thorland EC, Vermeesch JR, Waggoner DJ, Watson MS, Martin CL, Ledbetter DH. Consensus statement: chromosomal microarray is a first-tier clinical diagnostic test for individuals with developmental disabilities or congenital anomalies. *American Journal of Human Genetics* 2010;86:749-64.
- [48] Manning M, Hudgins L, Professional Practice and Guidelines Committee. Array-based technology and recommendations for utilization in medical genetics practice for detection of chromosomal abnormalities. *Genetics in Medicine* 2010;12:742-5.
- [49] Kearney HM, Thorland EC, Brown KK, Quintero-Rivera F, South ST, Working Group of the American College of Medical Genetics Laboratory Quality Assurance Committee. American College of Medical Genetics standards and guidelines for interpretation and reporting of postnatal constitutional copy number variants. *Genetics in Medicine* 2011;13:680-5.
- [50] Kearney HM, South ST, Wolff DJ, Lamb A, Hamosh A, Rao KW, Working Group of the American College of Medical Genetics. American College of Medical Genetics recommendations for the design and performance expectations for clinical genomic copy number microarrays intended for use in the postnatal setting for detection of constitutional abnormalities. *Genetics in Medicine* 2011;13:676-9.
- [51] Lee C, Iafrate AJ, Brothman AR. Copy number variations and clinical cytogenetic diagnosis of constitutional disorders. *Nature Genetics* 2007;39:S48-54.
- [52] Tsuchiya KD, Shaffer LG, Aradhya S, Gastier-Foster JM, Patel A, Rudd MK, Biggerstaff JS, Sanger WG, Schwartz S, Tepperberg JH, Thorland EC, Torchia BA, Brothman AR. Variability in interpreting and reporting copy number changes detected by array-based technology in clinical laboratories. *Genetics in Medicine* 2009;11:866-73.
- [53] de Leeuw N, Dijkhuizen T, Hehir-Kwa JY, Carter NP, Feuk L, Firth HV, Kuhn RM, Ledbetter DH, Martin CL, van Ravenswaaij-Arts CM, Scherer SW, Shams S, Van Vooren S, Sijmons R, Swertz M, Hastings R. Diagnostic interpretation of array data using public databases and internet sources. *Human Mutation* 2012;33:930-40.
- [54] Corpas M, Bragin E, Clayton S, Bevan P, Firth HV. Interpretation of genomic copy number variants using DECIPHER. In: *Current Protocol of Human Genetics*, Chapter 8:Unit 8.14, 2012.

- [55] Riggs ER, Church DM, Hanson K, Horner VL, Kaminsky EB, Kuhn RM, Wain KE, Williams ES, Aradhya S, Kearney HM, Ledbetter DH, South ST, Thorland EC, Martin CL. Towards an evidence-based process for the clinical interpretation of copy number variation. *Clinical Genetics* 2011;19:1-10.
- [56] Paciorkowski AR, Fang M. Chromosomal microarray interpretation: what is a child neurologist to do? *Pediatric Neurology* 2009;41:391-8.
- [57] Brothman AR, Dolan MM, Goodman BK, Park JP, Persons DL, Saxe DF, Tepperberg JH, Tsuchiya KD, Van Dyke DL, Wilson KS, Wolff DJ, Theil KS. College of American Pathologists/American College of Medical Genetics proficiency testing for constitutional cytogenomic microarray analysis. *Genetics in Medicine* 2011;13, 765-9.
- [58] Shevell M, Ashwal S, Donley D, Flint J, Gingold M, Hirtz D, Donley D, Flint J, Gingold M, Hirtz D, Majnemer A, Noetzel M, Sheth RD; Quality Standards Subcommittee of the American Academy of Neurology; Practice Committee of the Child Neurology Society. Practice parameter: evaluation of the child with global developmental delay: report of the quality standards subcommittee of the child neurology society. *Neurology* 2003;60:367-80.
- [59] Ledbetter DH, Martin CL. Cryptic telomere imbalance: a 15-year update. *American Journal of Medical Genetics* 2007;145C: 327-34.
- [60] Rossi MR, DiMaio M, Xiang B, Lu K, Hande K, Seashore G, Mahoney M, Li P. Clinical and genomic characterization of distal duplications and deletions of chromosome 4q: Study of two cases and review of the literature. *American Journal of Medical Genetics* 2009;149A:2788-94.
- [61] Khattab M, Xu F, Li P, Bhandari V. A de novo 3.54 Mb deletion of 17q22-q23.1 associated with hydrocephalus: A case report and review of literature. *American Journal of Medical Genetics* 2011;155A:3082-6.
- [62] van Bon BW, Koolen DA, Borgatti R, Magee A, Garcia-Minaur S, Rooms L, Reardon W, Zollino M, Bonaglia MC, De Gregori M, Novara F, Grasso R, Ciccone R, van Duynvenoorde HA, Aalbers AM, Guerrini R, Fazzi E, Nillesen WM, McCullough S, Kant SG, Marcelis CL, Pfundt R, de Leeuw N, Smeets D, Sistermans EA, Wit JM, Hamel BC, Brunner HG, Kooy F, Zuffardi O, de Vries BB. Clinical and molecular characteristics of 1qter microdeletion syndrome: delineating a critical region for corpus callosum agenesis/hypogenesis. *Journal of Medical Genetics* 2008;45(6):346-54.
- [63] Orellana C, Roselló M, Monfort S, Oltra S, Quiroga R, Ferrer I, Martínez F. Corpus callosum abnormalities and the controversy about the candidate genes located in 1q44. *Cytogenetics and Genome Research* 2009;127:5-8.
- [64] Caliebe A, Kroes HY, van der Smagt JJ, Martin-Subero JJ, Tönnies H, van 't Slot R, Nievelstein RA, Muhle H, Stephani U, Alfke K, Stefanova I, Hellenbroich Y, Gillesen-Kaesbach G, Hochstenbach R, Siebert R, Poot M. Four patients with speech delay, seizures and variable corpus callosum thickness sharing a 0.440 Mb deletion in region 1q44 containing the HNRPU gene. *European Journal of Medical Genetics* 2010;53:179-85.

- [65] Thierry G, Bénétéau C, Pichon O, Flori E, Isidor B, Popelard F, Delrue MA, Duboscq-Bidot L, Thuresson AC, van Bon BW, Cailley D, Rooryck C, Paubel A, Metay C, Dusser A, Pasquier L, Béri M, Bonnet C, Jaillard S, Dubourg C, Tou B, Quéré MP, Soussi-Zander C, Toutain A, Lacombe D, Arveiler B, de Vries BB, Jonveaux P, David A, Le Caignec C. Molecular characterization of 1q44 microdeletion in 11 patients reveals three candidate genes for intellectual disability and seizures. *American Journal of Medical Genetics* 2012;158A:1633-40.
- [66] Shimojima K, Okamoto N, Suzuki Y, Saito M, Mori M, Yamagata T, Momoi MY, Hattori H, Okano Y, Hisata K, Okumura A, Yamamoto T. Subtelomeric deletions of 1q43q44 and severe brain impairment associated with delayed myelination. *Journal of Human Genetics* 2012;57:593-600
- [67] Ballif, B. C., Rosenfeld, J. A., Traylor, R., Theisen, A., Bader, P. I., Ladda, R. L., Sell, S. L., Steinraths, M., Surti, U., McGuire, M., Williams, S., Farrell, S. A., and 18 others. High-resolution array CGH defines critical regions and candidate genes for microcephaly, abnormalities of the corpus callosum, and seizure phenotypes in patients with microdeletions of 1q43q44. *Human Genetics* 2012;131:145-56.
- [68] Selmer KK, Bryne E, Rødningen OK, Fannemel M. A de novo 163 kb interstitial 1q44 microdeletion in a boy with thin corpus callosum, psychomotor delay and seizures. *European Journal of Medical Genetics* 2012;55:715-8.
- [69] Guilherme RS, Meloni VF, Kim CA, Pellegrino R, Takeno SS, Spinner NB, Conlin LK, Christofolini DM, Kulikowski LD, Melaragno MI. Mechanisms of ring chromosome formation, ring instability and clinical consequences. *BMC Medical Genetics* 2011;12:171.
- [70] Zhang HZ, Xu F, Seashore M, Li P. Unique genomic structure and distinct mitotic behavior of ring chromosome 21 in two unrelated cases. *Cytogenetics and Genome Research*. 2012;136:180-7.
- [71] Yu S, Fiedler SD, Brawner SJ, Joyce JM, Zhou XG, Liu HY. Characterizing small supernumerary marker chromosomes with combination of multiple techniques. *Cytogenetics and Genome Research* 2012;136:6-14.
- [72] Conlin LK, Kramer W, Hutchinson AL, Li X, Riethman H, Hakonarson H, Mulley JC, Scheffer IE, Berkovic SF, Hosain SA, Spinner NB. Molecular analysis of ring chromosome 20 syndrome reveals two distinct groups of patients. *Journal of Medical Genetics*. 2011;48:1-9.
- [73] Ballif BC, Rorem EA, Sundin K, Lincicum M, Gaskin S, Coppinger J, Kashork CD, Shaffer LG, Bejjani BA. Detection of low-level mosaicism by array CGH in routine diagnostic specimens. *American Journal of Medical Genetics* 2006;140A:2757-67.
- [74] Cheung SW, Shaw CA, Scott DA, Patel A, Sahoo T, BAcino CA, Pursley A, Li J, Erickson R, Gropman L, Miller DT, Seashore MR, Summers AM, Stankiewicz P, Chinault AC, Lupski JR, Beaudet AL, Sutton VR. Microarray-based CGH detects chromosomal mosaicism not revealed by conventional cytogenetics. *American Journal of Medical Genetics* 2007;143A:1679-86.

- [75] Li P, Zhang HZ, Huff S, Nimmakayalu M, Qumsiyeh M, Yu JW, Szekely A, Xu T, Pober BR. Karyotype-phenotype insights from 11q14.1-q23.2 interstitial deletions: *FZD4* haploinsufficiency and exudative vitreoretinopathy in a patient with a complex chromosome rearrangement. *American Journal of Medical Genetics* 2006;140A: 2721-9.
- [76] Higgins AW, Alkuraya FS, Bosco AF, Brown KK, Bruns GA, Donovan DJ, Eisenman R, Fan Y, Farra CG, Ferguson HL, Gusella JF, Harris DJ, Herrick SR, Kelly C, Kim HG, Kishikawa S, Korf BR, Kulkarni S, Lally E, Leach NT, Lemyre E, Lewis J, Ligon AH, Lu W, Maas RL, MacDonald ME, Moore SD, Peters RE, Quade BJ, Quintero-Rivera F, Saadi I, Shen Y, Shendure J, Williamson RE, Morton CC. Characterization of apparently balanced chromosomal rearrangements from the developmental genome anatomy project. *American Journal Human Genetics* 2008;82:712-22.
- [77] De Gregori M, Ciccone R, Magini P, Pramparo T, Gimelli S, Messa J, Novara F, Vetro A, Rossi E, Maraschio P, Bonaglia MC, Anichini C, Ferrero GB, Silengo M, Fazzi E, Zatterale A, Fischetto R, Previderé C, Belli S, Turci A, Calabrese G, Bernardi F, Meneghelli E, Riegel M, Rocchi M, Gueneri S, Lalatta F, Zelante L, Romano C, Fichera M, Mattina T, Arrigo G, Zollino M, Giglio S, Lonardo F, Bonfante A, Ferlini A, Cifuentes F, Van Esch H, Backx L, Schinzel A, Vermeesch JR, Zuffardi O. 2007. Cryptic deletions are a common finding in "balanced" reciprocal and complex chromosome rearrangements: A study of 59 patients. *Journal of Medical Genetics* 2007;44:750-62.
- [78] Baptista J, Mercer C, Prigmore E, Gribble SM, Carter NP, Maloney V, Thomas NS, Jacobs PA, Crolla JA, Breakpoint mapping and array CGH in translocations: comparison of a phenotypically normal and an abnormal cohort. *American Journal of Human Genetics* 2008;82:927-936.
- [79] Cacciagli P, Haddad MR, Mignon-Ravix C, El-Waly B, Moncla A, Missirian C, Chabrol B, Villard L. Disruption of the *ATP8A2* gene in a patient with a t(10;13) de novo balanced translocation and a severe neurological phenotype. *European Journal of Human Genetics* 2010;18:1360-3.
- [80] Brownstein CA, Adler F, Nelson-Williams C, Lijima J, Li P, Imura A, Nabeshima Y, Reyes-Mugica M, Carpenter TO, Lifton RP. A translocation causing increased α -Klotho level results in hypophosphatemic rickets and hyperparathyroidism. *Proceedings of the National Academy of Sciences USA* 2008;105:3455-60.
- [81] Talkowski ME, Ernst C, Heilbut A, Chiang C, Hanscom C, Lindgren A, Kirby A, Liu S, Muddukrishna B, Ohsumi TK, Shen Y, Borowsky M, Daly MJ, Morton CC, Gusella JF. Next-generation sequencing strategies enable routine detection of balanced chromosome rearrangements for clinical diagnostics and genetic research. *American Journal of Human Genetics* 2011;88:469-81.
- [82] Koolen DA, Vissers LE, Pfundt R, de Leeuw N, Knight SJ, Regan R, Kooy RF, Reyniers E, Romano C, Fichera M, Schinzel A, Baumer A, Anderlid BM, Schoumans J, Knoers NV, van Kessel AG, Sistermans EA, Veltman JA, Brunner HG, de Vries BB. A new chromosome 17q21.31 microdeletion syndrome associated with a common inversion polymorphism. *Nature Genetics* 2006;38:999-1001.

- [83] Shaw-Smith C, Pittman AM, Willatt L, Martin H, Rickman L, Gribble S, Curley R, Cumming S, Dunn C, Kalaitzopoulos D, Porter K, Prigmore E, Krepischi-Santos AC, Varela MC, Koiffmann CP, Lees AJ, Rosenberg C, Firth HV, de Silva R, Carter NP. Microdeletion encompassing MAPT at chromosome 17q21.3 is associated with developmental delay and learning disability. *Nature Genetics* 2006;38:1032-37.
- [84] Kirchhoff M, Bisgaard A-M, Duno M, Hansen FJ, Schwartz MA. 17q21.31 microduplication, reciprocal to the newly described 17q21.31 microdeletion, in a girl with severe psychomotor developmental delay and dysmorphic craniofacial features. *European Journal of Medical Genetics* 2007;50:256-63.
- [85] Cooper GM, Coe BP, Girirajan S, Rosenfeld JA, Vu TH, Baker C, Williams C, Stalker H, Hamid R, Hannig V, Abdel-Hamid H, Bader P, McCracken E, Niyazov D, Leppig K, Thiese H, Hummel M, Alexander N, Gorski J, Kussmann J, Shashi V, Johnson K, Rehder C, Ballif BC, Shaffer LG, Eichler EE. A copy number variation morbidity map of developmental delay. *Nature Genetics* 2011;43:838-46.
- [86] Donnelly MP, Paschou P, Grigorenko E, Gurwitz D, Mehdi SQ, Kajuna SLB, Barta C, Kungulilo S, Karoma NJ, Lu R-B, Zhukova OV, Kim J-J, Comas D, Sinicalco M, New M, Li P, Li H, Speed WC, Rajeevan H, Pakstis A, Kidd JR, Kidd KK. The distribution and most recent common ancestor of the 17q21 inversion in humans. *American Journal of Human Genetics* 2010;86:161-171.
- [87] Merla G, Brunetti-Pierri N, Micale, Fusco C. Copy number variants at Williams-Beuren syndrome 7q11.23 regions. *Hum Genet* 2010;128:3-26.
- [88] Weiss LA, Shen Y, Korn JM, Arking DE, Miller DT, Fossdal R, Saemundsen E, Stefansson H, Ferreira MA, Green T, Platt OS, Ruderfer DM, Walsh CA, Altshuler D, Chakravarti A, Tanzi RE, Stefansson K, Santangelo SL, Gusella JF, Sklar P, Wu BL, Daly MJ; Autism Consortium. Association between microdeletion and microduplication at 16p11.2 and autism. *New England Journal of Medicine* 2008;358(7):667-75.
- [89] Jacquemont S, Reymond A, Zufferey F, Harewood L, Walters RG, Kutalik Z, Martinet D et al. Mirror extreme BMI phenotypes associated with gene dosage at the chromosome 16p11.2 locus. *Nature* 2011;478:97-102.
- [90] Mefford H, Sharp A, Baker C, Itsara A, Jiang Z, Buysse K, Huang S, Maloney V, Crolla J, Baralle D, Collins A, Mercer C, et al. Recurrent rearrangements of chromosome 1q21.1 and variable pediatric phenotypes. *New England Journal of Medicine* 2008;359:1685-99.
- [91] Brunetti-Pierri N, Berg JS, Scaglia F, Belmont J, Bacino CA, Sahoo T, Lalani SR, Graham B, Lee B, Shinawi M, Shen J, Kang SH, Pursley A, Lotze T, Kennedy G, Lansky-Shafer S, Weaver C, Roeder ER, Grebe TA, Arnold GL, Hutchison T, Reimschisel T, Amato S, Geraghty MT, Innis JW, Obersztyn E, Nowakowska B, Rosengren SS, Bader PI, Grange DK, Naqvi S, Garnica AD, Bernes SM, Fong CT, Summers A, Walters WD, Lupski JR, Stankiewicz P, Cheung SW, Patel A. Recurrent reciprocal 1q21.1 deletions and duplications associated with microcephaly or macrocephaly and developmental and behavioral abnormalities. *Nature Genetics* 2008;40:1466-71.
- [92] Sahoo T, Theisen A, Rosenfeld JA, Lamb A N, Ravnan JB, Schultz RA, Torchia BS, Neill N, Casci I, Bejjani BA, Shaffer LG. Copy number variants of schizophrenia sus-

ceptibility loci are associated with a spectrum of speech and developmental delays and behavior problems. *Genetics in Medicine* 2011;13:868-80.

- [93] Carmona-Mora P, Walz K. Retinoic Acid Induced 1, RAI1: A Dosage Sensitive Gene Related to Neurobehavioral Alterations Including Autistic Behavior. *Current Genomics* 2010;11:607-17.
- [94] Weksberg R, Shuman C, Beckwith JB. 2010. Beckwith-Wiedemann syndrome. *European Journal of Human Genetics* 2010;18:8-14.
- [95] Qiao Y, Harvard C, Tyson C, Liu X, Fawcett C, Paylidis P, Holden JJ, Lewis ME, Rajcan-Separovic E. Outcome of array CGH analysis for 255 subjects with intellectual disability and search for candidate genes using bioinformatics. *Human Genetics* 2010;128:179-94.
- [96] Pinto D, Pagnamenta AT, Klei L, Anney R, Merico D, Regan R, Conroy J, et al. Functional impact of global rare copy number variation in autism spectrum disorders. *Nature* 2010;466:368-72.
- [97] Xu F, Li L, Schulz VP, Gallagher PG, Xiang B, Zhao H-Y, Li P. Identification of candidate brain expressed genes and interacting networks for intellectual disability by integrated cytogenetic, genomic and bioinformatic analyses. The Global Conference of Chinese Geneticists. Hangzhou, China, 2012.
- [98] Marchetto MC, Carromeu C, Acab A, Yu D, Yeo GW, Mu Y, Chen G, Gage FH, Muotri AR. A model for neural development and treatment of Rett syndrome using human induced pluripotent stem cells. *Cell* 2010;143:527-39.
- [99] Yang J, Cai J, Zhang Y, Wang X, Li W, Xu J, Li F, Guo X, Deng K, Zhong M, Chen Y, Lai L, Pei D, Esteban M. Induced pluripotent stem cells can be used to model the genomic imprinting disorder prader-willi syndrome. *Journal Biological Chemistry* 2010; 285:40303-11.
- [100] Li W, Wang X, Fan W, Zhao P, Chan YC, Chen S, Zhang S, Guo X, Zhang Y, Li Y, Cai J, Qin D, Li X, Yang J, Peng T, Zychlinski D, Hoffmann D, Zhang R, Deng K, Ng KM, Menten B, Zhong M, Wu J, Li Z, Chen Y, Schambach A, Tse HF, Pei D, Esteban MA. Modeling abnormal early development with induced pluripotent stem cells from aneuploid syndromes. *Human Molecular Genetics*. 2012;21:32-45.
- [101] Chailangkarn T, Acab A, Muotri AR. Modeling neurodevelopmental disorders using human neurons. *Current Opinion in Neurobiology*. 2012;22:1-6.
- [102] Horev G, Ellegood J, Lerch JP, Son YE, Muthuswamy L, Vogel H, Krieger AM, Buja A, Henkelman RM, Wigler M, Mills AA. Dosage-dependent phenotypes in models of 16p11.2 lesions found in autism. *Proceedings of the National Academy of Sciences USA* 2011;108:17076-81.
- [103] Golzio C, Willer J, Talkowski ME, Oh EC, Taniguchi Y, Jacquemont S, Reymond A, Sun M, Sawa A, Gusella JF, Kamiya A, Beckmann JS, Katsanis N. KCTD13 is a major driver of mirrored neuroanatomical phenotypes of the 16p11.2 copy number variant. *Nature* 2012;485:363-7.

- [104] Darilek S, Ward P, Pursley A, Plunkett K, Furman P, Magoulas P, Patel A, Cheung SW, Eng CM. Pre- and postnatal genetic testing by array-comparative genomic hybridization: genetic counseling perspectives. *Genetics in Medicine* 2008;10:13-18.
- [105] Coulter ME, Miller DT, Harris DJ, Hawley P, Picker J, Roberts AE, Sobeih MM, Irons M. Chromosomal microarray testing influences medical management. *Genetics in Medicine* 2011;13:770-6.
- [106] Cubells JF, Deoreo EH, Harvey PD, Garlow SJ, Garber K, Adam MP, Martin CL. Pharmacogenetically guided treatment of recurrent rage outbursts in an adult male with 15q13.3 deletion syndrome. *American Journal of Medical Genetics* 2011;155A: 805-10.