

# We are IntechOpen, the world's leading publisher of Open Access books Built by scientists, for scientists

6,900

Open access books available

186,000

International authors and editors

200M

Downloads

Our authors are among the

154

Countries delivered to

TOP 1%

most cited scientists

12.2%

Contributors from top 500 universities



WEB OF SCIENCE™

Selection of our books indexed in the Book Citation Index  
in Web of Science™ Core Collection (BKCI)

Interested in publishing with us?  
Contact [book.department@intechopen.com](mailto:book.department@intechopen.com)

Numbers displayed above are based on latest data collected.  
For more information visit [www.intechopen.com](http://www.intechopen.com)



---

# **Role of Dendritic Cell Subsets on HIV-Specific Immunity**

---

Wilfried Posch, Cornelia Lass-Flörl and  
Doris Wilflingseder

Additional information is available at the end of the chapter

<http://dx.doi.org/10.5772/52744>

---

## **1. Introduction**

DC are key regulators of immunity in view of the fact that they are involved in immune responses against infectious diseases, allergy and cancer [1, 2]. Ralph Steinman was awarded the Nobel Prize for Medicine 2011 for DC discovery in 1973 [3]. Steinman and Cohn [3] described a novel cell type in mouse spleen, which they named 'dendritic cell' due to their tree-like shape. The major function of DC is the induction of adaptive immunity in the LN. Yet, DC can also interact with innate immune cells, for instance natural killer (NK) and NKT cells [1, 4].

Upon entry of HIV into the host, the virus has to be transported from mucosal surfaces to lymphatic tissues, where it is transmitted to its primary targets, CD4<sup>+</sup> T lymphocytes. This process is thought to be contrived by DC.

DC thereby play critical roles during HIV and SIV (simian immunodeficiency virus) infection.

The skin and mucosa are composed of two compartments, the epidermis and the dermis (skin) or stratified squamous epithelium and lamina propria (mucosa), each containing a major subset of DC - Langerhans cells (LC) reside in the suprabasal layers of the epidermis and epithelia [5], while dermal/interstitial DC are distributed throughout the connective tissue of the dermis [6, 7].

Both subsets represent immature DC that are very efficient in Ag uptake and processing. As immature DC (iDC), they reside in peripheral tissue, which they survey for invading pathogens. Upon encounter with antigen (Ag), DC mature (mDC) and migrate to the draining lymph nodes (LN). They pass through different maturation stages, which enable them to fulfill specific tasks such as the uptake, the processing and the presentation of Ag on major histocompatibility complex (MHC) molecules to naïve T cells. In the T cell area of lymphatic

tissue the mature DC stimulate Ag-specific CD4<sup>+</sup> and CD8<sup>+</sup> T cells to proliferate and develop effector function, such as cytokine production and cytotoxic activity. Effector T cells are recruited to inflamed peripheral tissue and participate in the elimination of pathogens and infected cells. This very particular life cycle illustrates why DC are called the 'sentinels of the immune system' [8].

In humans, different DC subsets have been identified in blood, spleen and skin, but little is known respecting resident and migratory DC in human LN. This book chapter will review the major DC subsets found in humans and their role in HIV-pathogenesis. If data are available, also the role of the viral opsonization pattern and its impact on DC interaction will be discussed.

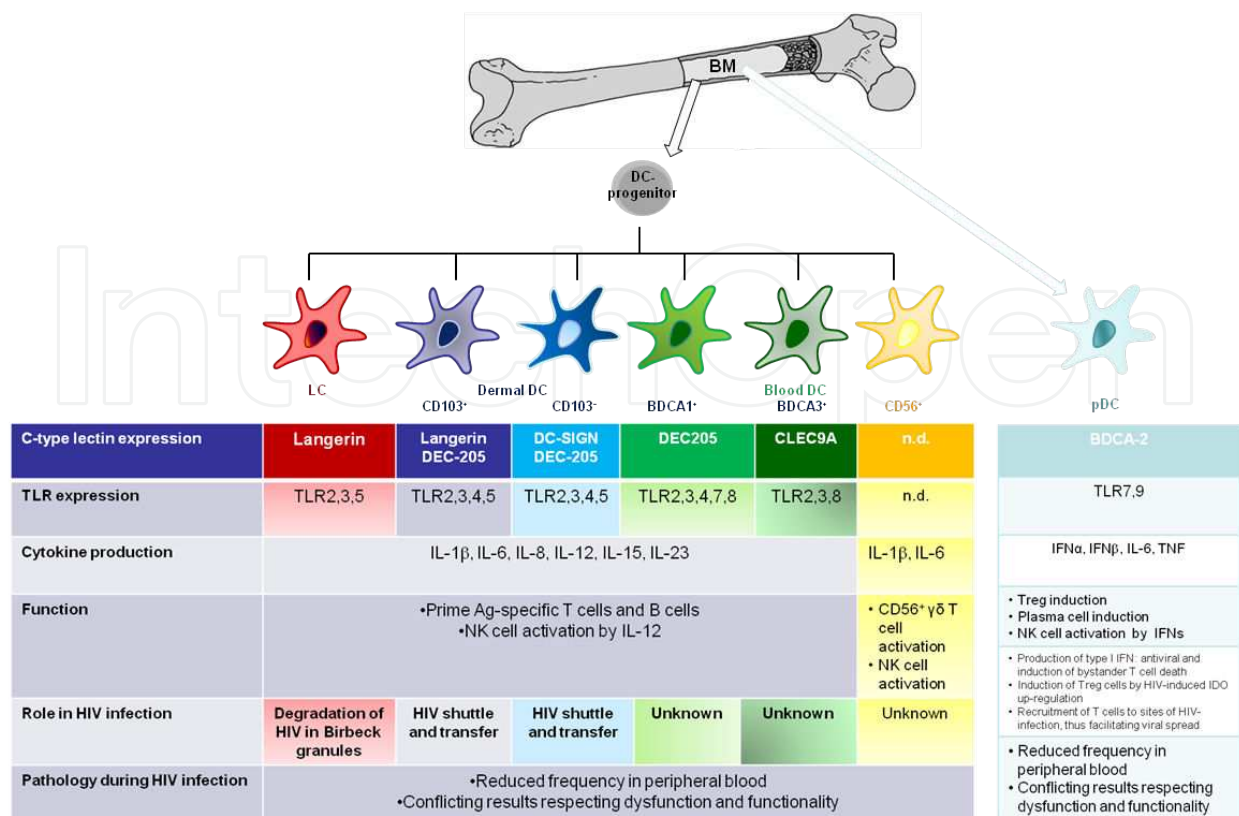
## 2. DC subsets and their role in HIV infection

DC are divided into two main groups: conventional myeloid DC (cDC) and non-conventional plasmacytoid DC (pDC) (Figure 1). As recently described by Doulatov et al. (2010) [9], human multi-lymphoid progenitors can bring forth all lymphoid cell types, including monocytes, macrophages and DC. Nonetheless, most DC in steady-state emerge from a common myeloid progenitor [10]. DC are heterogeneous subtypes with distinct functions, properties and localization [11]. DC progenitors migrate from the bone-marrow through the blood to lymphoid organs and peripheral tissues. There, they give rise to different cDC subsets (Figure 1). LC display an exception within the cDC group since they maintain in the epidermis independent on circulating precursors [12]. Within cDC, migratory and lymphoid-resident DC are distinguished: migratory DC travel from peripheral tissues to lymphoid organs, whereas lymphoid-resident DC populate lymphoid organs during their whole lifespan and lack the migratory function. In humans cDC comprise Langerhans Cells (LC), dermal DC (CD103<sup>+</sup> and CD103<sup>-</sup>), BDCA1<sup>+</sup> (CD1c)<sup>-</sup> and BDCA3<sup>+</sup> (CD141) DC, and the recently described CD56<sup>+</sup> DC (Figure 1). They are localized in the skin, secondary lymphoid organs (spleen, tonsils) and blood. pDC develop in the bone-marrow and then they reside in lymphoid organs [13]. HLA-DR<sup>+</sup>CD123<sup>+</sup>pDC express BDCA2 and this cell subset is found in blood, secondary lymphoid organs as well as peripheral tissues, e.g. skin or lungs (Figure 1). The cDC subtypes and pDC express a different receptor repertoire and comprise distinct functions with respect to HIV spread, antiviral activity and transmission, which is reviewed below and shown in Figure 1 (Table adapted from Altfeld et al., [14]). Both cell types are resident in lymphoid tissues in the steady state, but during an inflammatory response, pDC and cDC are actively recruited to these tissues [15-17].

### 2.1. cDC

#### 2.1.1. LC and HIV

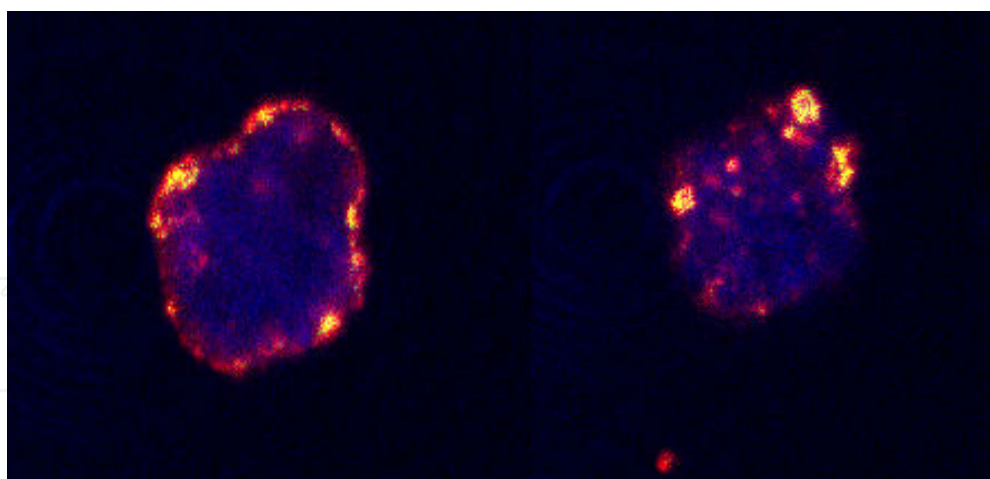
LC survey the basal and suprabasal layers of the stratified squamous epithelium of the skin and oral and ano-genital mucosa for invading pathogens [18-21]. Due to their ideal



**Figure 1.** DC-subsets and functions during HIV-infection (Table adapted from *Altfeld et al., 2011*; CD56<sup>+</sup> DC added). HIV co-localizes with Langerin in LC to high extend as shown by confocal microscopic analyses (co-localization: yellow). CD1a<sup>+</sup> LC were isolated from human skin, incubated with HIV for 2 hrs, fixed and permeabilized with Cytofix/-perm (BD Biosciences). The cells were then stained using an anti-human Langerin-PE mAb (red, Dendritics) and the anti-HIV-Ab KC57-FITC ((green, Beckman Coulter). The nucleus was stained using DRAQ5™ (blue, Invitrogen) (*Posch et al., unpublished*).

localization in mucosal tissues and their long dendrites to efficiently capture Ag, they comprise the first line defense against mucosal infections. After Ag acquisition, LC start to mature, as represented by up-regulation of co-stimulatory molecules (CD80, CD86, CD40), MHC class I and II molecules, CD83 and CCR7 and down-regulation of Langerin and E-cadherin [22].

Due to CCR7 up-regulation, the mature LC migrate to the LN along a CCL19 and CCL21-leu (leucine isoform of CCL21) gradient to efficiently prime T cells there [23]. Beside initiating an effective adaptive immune response, LC were illustrated by DeWitte et al. [24, 25] to also have important functions with respect to innate immune responses. Beside a specific set of TLRs (TLR2, 3, 5) and high expression of CD1a, LC express Langerin and contain Birbeck granules that might be crucial to their innate function [21, 26-29] (Figure 1). The C-type lectin Langerin interacts with non-opsonized HIV-1 (Figure 2) and other pathogens such as fungi and bacteria, via fucose or mannose residues. Thereby degradation of HIV-1 in Birbeck granules is promoted and HIV-1 dissemination is limited [24].



**Figure 2.** Co-localization of HIV and Langerin on CD1a<sup>+</sup> Langerhans Cells isolated from human skin

Early investigations of HIV-LC interactions illustrated that LC are productively infected by HIV and that they efficiently transmit the virus to T cells [30-32]. These results suggested that HIV take advantage of the antigen-capturing properties of LC to reach the T cell zone in the lymphatic tissues and via this route, HIV can establish a productive infection of the host. However, *in vivo* only low percentages of LC are infected and despite abundant expression of the primary HIV-receptor CD4 and the chemokine co-receptor CCR5, high HIV-1 concentrations are required to infect LC *in vitro* [31, 32]. As shown by Wu and KewalRemani [33] the percentages to acquire HIV-1 after heterosexual contact with an HIV-positive individual are between 0.01 to 0.1%, which might be due to a restriction by LC.

Engagement of Langerin trimers on the surface of LC induces formation of Birbeck granules, which are part of the endosomal recycling system and uniquely found in LC (Figure 3, lower right panel) [34]. Upon capture of mycobacterial lipoproteins by Langerin, these were exposed to CD1a molecules in Birbeck granules [35], which suggests that Birbeck granule formation displays a non-classical antigen processing pathway [20]. Also HIV-1 attaches to Langerin on LC and is subsequently routed to Birbeck granules, which points to a role of the granules with respect to degradation of viruses.

Studies by Gejtenbeek's laboratory [24] showed that under homeostatic conditions, Langerin expressed on LC and acts as restriction factor for HIV infection. They demonstrated that, if HIV-gp120 attaches to Langerin, the viral particle is internalized and subsequently degraded in Birbeck granules. Thus, LC are protected from infection with incoming, non-opsonized HIV particles and HIV-1 is not disseminated throughout the host [24]. The rapid internalization of HIV-1 into LC by Langerin impedes interactions and subsequent fusion with CD4 and CCR5 and also prevents transmission to the main target cells of the virus, CD4<sup>+</sup> T cells. Thereby, Langerin acts as a protective anti-HIV barrier during the first steps of HIV-1 infection, if the virus is non-opsonized and if sexually transmitted pathogens are lacking.



As demonstrated, if the host system is facing other sexually transmitted infections, the anti-HIV-1-barrier of LC is abrogated and HIV-1 transfer to susceptible CD4<sup>+</sup> T cells is promoted [20, 36, 37]. Pathogens, such as *Candida* or *Neisseria*, directly interact with Langerin and compete with HIV-1-binding. Additional factors explaining the by-passing of the anti-HIV-1-barrier function of Langerin are that:

- by high viral loads the receptor becomes saturated,
- infections, e.g. Herpes simplex virus infection, down-regulate Langerin surface expression [20],
- the HIV-1 entry receptors CD4 and CCR5 are up-regulated during additional sexually transmitted infections [37],
- or the antiviral function of Langerin is reverted by inflammation-induced TNF- $\alpha$  (tumor-necrosis-factor  $\alpha$ ) production due to *Candida albicans* or *Neisseria gonorrhoea* [36].

These observations allow to conclude that during acute co-infection the anti-viral function of LC is significantly decreased.

Not only acute co-infection, but also opsonization of HIV with either complement fragments or specific Abs might result in reduction or abolishment of the anti-viral function mediated by Langerin (*Wilflingseder and Posch, unpublished data*). Upon entry of viruses into the body, immediate non-specific immune responses are triggered and within a short time the innate immune system is completely activated. During acute infection multiple humoral and cellular players, including cytokines, complement, acute-phase proteins, DC, macrophages, and natural killer (NK) cells, that co-operate to generate an efficient defense against infection, are activated. HIV-1 spontaneously triggers the complement system also in absence of specific Abs by interactions of gp41 with C1q [38-41]. Due to regulators of complement activation (RCAs) in the viral surface, HIV-1 is very efficiently protected against virolysis, which normally occurs due to MAC (membrane attack complex) formation and destruction of pathogens or infected cells. The incorporation of RCAs in the viral surface acts as protection mechanism and results in opsonization of HIV-1 with complement C3 fragments at the very initial steps following viral entry. After seroconversion, when HIV-1-specific Abs are established, the virus additionally is opsonized with specific IgGs. The different coating patterns of the virus change the receptor used on DC due to the density of complement fragments or Abs on the viral surface [42]. The C-type lectin-virus interaction becomes rather unimportant if the virus is opsonized and is substituted by complement or Fc receptor-virus interactions as already demonstrated using dermal DC [42]. After LC incubation using complement-opsonized HIV-1, we found that not only sexually transmitted diseases abrogate the antiviral barrier mediated via Langerin but also opsonization of HIV-1 (*Wilflingseder and Posch, unpublished data*).

In summary, during acute co-infection or by opsonization with complement fragments or Abs, the anti-viral function of LC is significantly reduced due to competition for Langerin or different receptor utilization. This facilitates HIV-1 infection of LC via CD4 and CCR5, intra-

cellular uptake of the virus (Figure 3) and promotion of HIV-1 transfer to its targets, CD4<sup>+</sup> T cells.

On the other hand LC were implicated in establishment of infection due to their location in the foreskin and due to compelling evidence that male circumcision efficiently reduces the risk to become infected with HIV-1 [43]. It was furthermore shown *in vivo* in highly HIV-1-exposed but (IgG) seronegative individuals, that gp41-specific IgA Abs efficiently blocked transfer of sexually transmitted HIV-1 [44-46]. A very recent study by Tudor et al. [46] illustrated that monomeric 2F5 IgA2 bound to gp41 MPER (membrane proximal external region) and free virus with greater efficiency than IgG1 and interfered with the initial HIV-1 transmission via Langerhans Cells. 2F5 IgA2 and IgG1 monomers blocked HIV-1 transcytosis in monostratified or multilayered epithelia as well as in rectal tissue [46, 47]. These Abs decreased infection of CD4<sup>+</sup> T cells and transfer from LC to autologous CD4<sup>+</sup> T cells [46]. The 2F5 IgA2 monomer inhibited virus transcytosis and CD4<sup>+</sup> T cell infection more efficiently, while the 2F5 IgG1 monomer was superior in blocking the LC-CD4<sup>+</sup> T cell transmission. A synergistic effect of both, 2F5 IgA2 and IgG1, was observed with respect to LC-CD4<sup>+</sup> T cell transmission and decrease of CD4<sup>+</sup> T cell infection [46].

### 2.1.2. Dermal DC and HIV

Along with LC, HIV-1 firstly attaches to dermal (interstitial) DC upon entry at mucosal surfaces (Figure 1). Dermal DC are underlying the epithelium, do not contain Birbeck granules and express heterogenous amounts of CD1a [48].

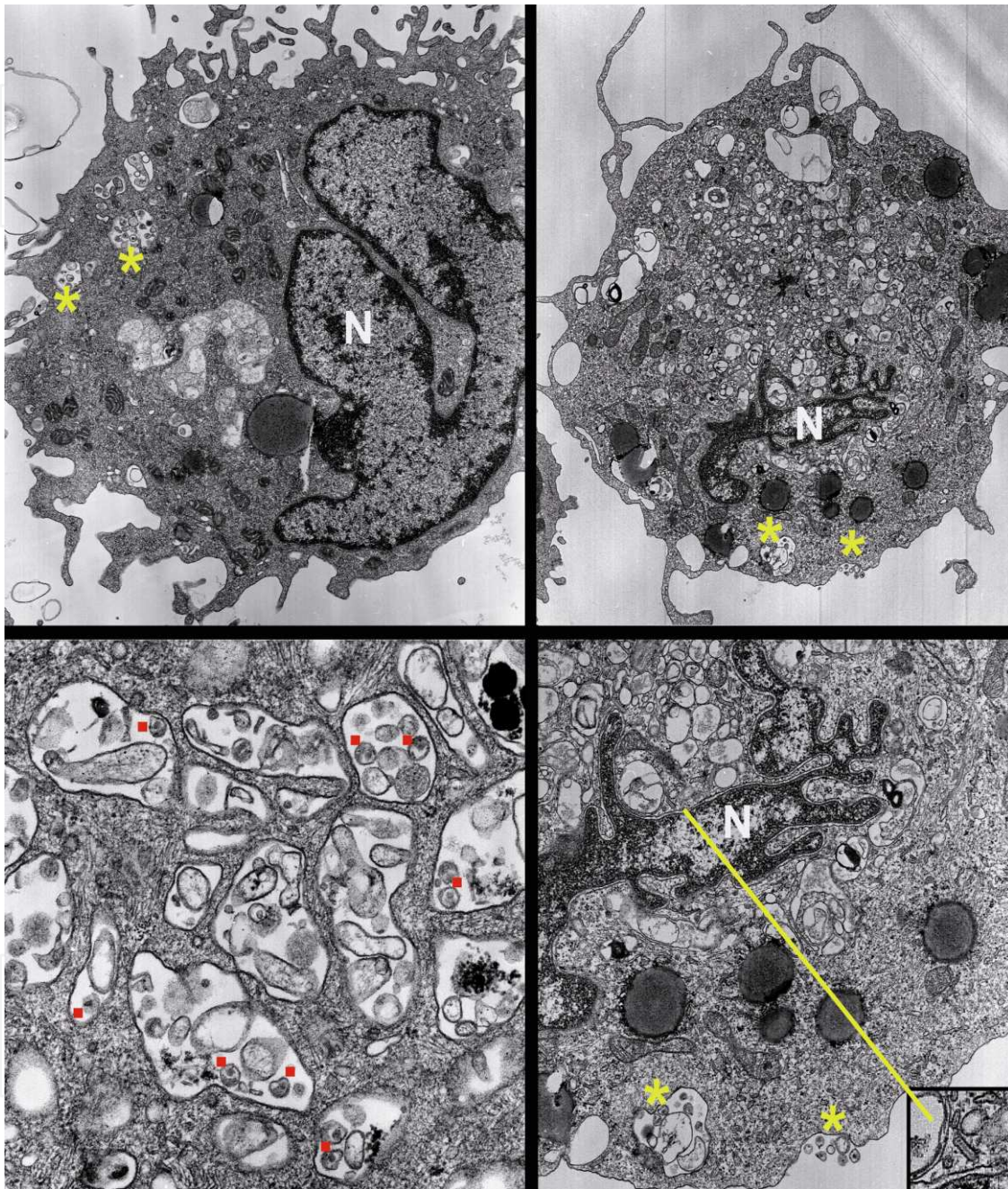
Interstitial DC are localized in the dermis and oral, vaginal and colonic lamina propria [6, 49-52]. They are characterized by the expression of CD11c, high expression of various C-type lectin receptors (Langerin on CD103<sup>+</sup> DC, DC-SIGN on CD103<sup>-</sup> DC, DEC-205 on both subsets), TLR2, 3, 4 and 5 and they secrete various cytokines upon pathogenic stimulation (Figure 1). Since there are only 2 studies available on human CD103<sup>+</sup> DC and SIV [53, 54], the following chapter refers to CD103<sup>-</sup>, DC-SIGN<sup>+</sup> dermal DC.

*In vitro* experiments showed that DC efficiently capture HIV-1 or SIV, independent on the maturation status of the cells (Figure 3 and [55]) and subsequently transfer the virus to CD4<sup>+</sup> T cells, which initiates a vigorous infection [41, 42, 56, 57]. These experiments imply that *in vivo* HIV exploits DC at mucosal sites as shuttles to CD4<sup>+</sup> T cells in the LN, but the exact events with respect to virus spread from mucosal sites to LN have not been enlightened yet. Thereby, DC seem to play a significant role in the spread of infection as well as in the induction of antiviral immunity.

As shown in Figure 3, dermal DC (left panel) and LC (right panel), which emigrated from whole skin explants, take up variable amounts of HIV-1 particles. As demonstrated by Frank et al. [55], human and macaque DC interacted similarly with SIV and ample amounts of virus were captured by DC. Transmission electron microscopic analyses revealed that iDC, which are endocytically highly active, captured few viral particles near the periphery of the membrane, while mDC, which down-regulate the endocytic capacity, retained high



amounts of virions in large vesicular compartments deeper within DC [55]. This points to a diverse entry and handling of virions within iDC and mDC.



**Figure 3.** Uptake of HIV into dendritic cells from human skin. Dendritic cells emigrated from whole skin explants were incubated with HIV for 2h and then fixed and embedded for transmission electron microscopy. Variable amounts of viral particles are taken up by dermal dendritic cells (left panels) and epidermal Langerhans cells (right panels). Lower panels show higher magnifications of membrane-enclosed virus particles in a dermal dendritic cell (left panel; some viruses marked with red/black). In a Langerhans cell (lower right panel) viruses can be seen docking onto the surface membrane (right asterisk) and already taken up into vesicular structures (left asterisk). A Birbeck granule is depicted in the inset as the identifying structure for Langerhans cells. N, nucleus.(Photos courtesy of Hella Stössel and Nikolaus Romani).



Beside the different handling of HIV-1 or SIV within iDC and mDC, opsonization of the virus with either complement fragments and/or Abs significantly affects the binding mechanism, internalization and infection of DC as well as their T cell stimulatory capacity [41, 42, 58]. As shown by Pruenster et al. [42], the complement cloud around the virus significantly blocked the accessibility of gp120 and therefore interfered with C-type lectin interaction.

Similar amounts of HIV-1 bound to the surface of DC independent on the opsonization pattern of the virus (Pruenster et al., 2005). The attachment of the differentially opsonized HIV-1-preparations was found to be specific (Figure 4 [Wilflingseder and Posch, unpublished data]), since pre-incubation of the DC with blocking Abs against human DC-SIGN, CD11b (CR3- $\alpha$  chain) or CD32 (Fc $\gamma$ RII) particularly blocked the interactions with the corresponding virus preparations:

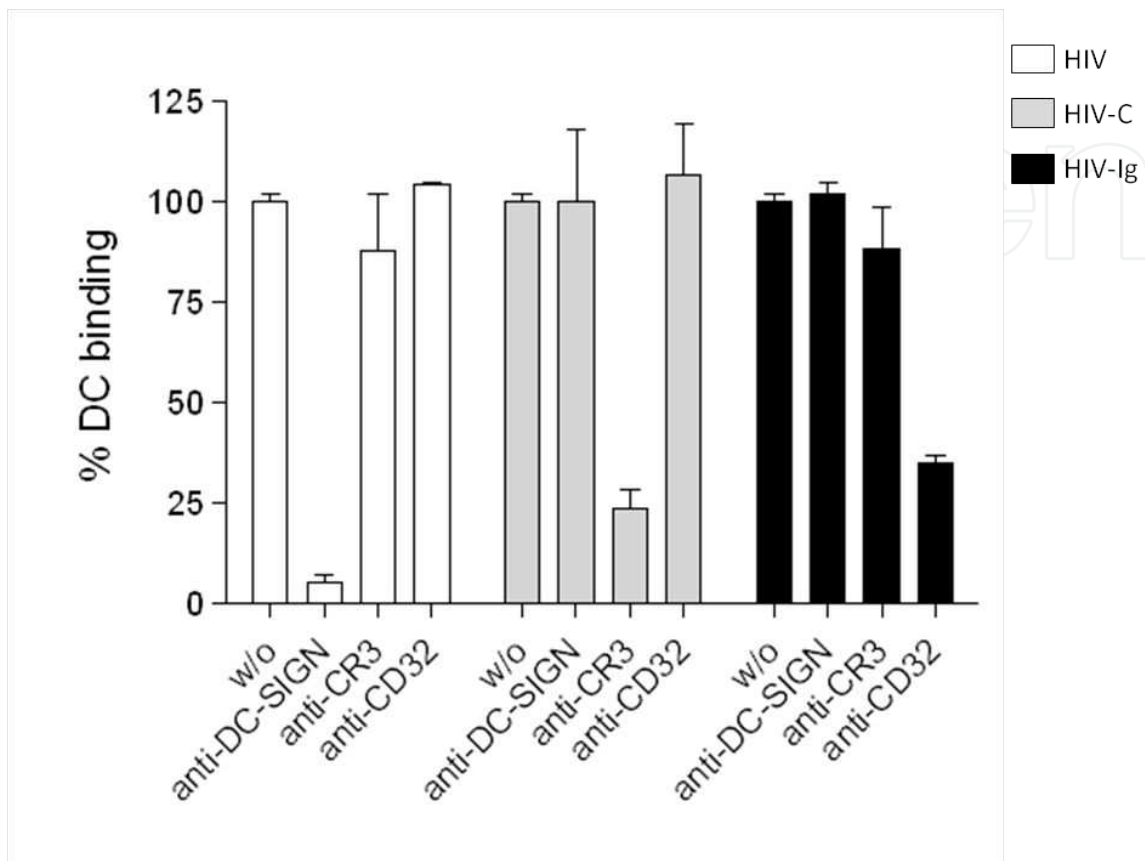
- blocking  $\alpha$ -DC-SIGN mAb inhibited interaction with non-opsonized HIV-1 (Figure 4, HIV),
- blocking  $\alpha$ -CR3mAb (TMG6.5) significantly interfered with binding of complement-opsonized HIV (HIV-C) to DC (Fig.4, HIV-C) and
- blocking  $\alpha$ -CD32mAb (AT10) inhibited binding of Ab-opsonized HIV-1 (Figure 4, HIV-Ig).

Additionally, we found variations respecting infection of DC with differentially opsonized HIV-1 preparations [41]. Productive infection of DC and LC with HIV-1 was described to be relatively inefficient compared to HIV-infection of CD4<sup>+</sup> T cells and HIV- or SIV-infected DC are rarely detected *in vivo* (rev. in Piguet and Steinman[59]). Our study using non-, complement-, complement-Ig- or Ig-opsonized HIV-1 uncovered that complement-opsonization of HIV-1 significantly enhanced DC-infection compared to non-opsonized HIV [41] and furthermore acted as an endogenous adjuvans for DC-mediated induction of HIV-specific CTLs [58].

In contrast, HIV-1 coated with specific, non-neutralizing Abs significantly impaired infection of and integration in DC and also 'trans'-infection of CD4<sup>+</sup> T cells after delayed addition of T cells [41].

Despite the low-level productive infection of DC, non-opsonized HIV-1 is very efficiently transmitted to T cells either via de novo ('cis'-transfer) or without ('trans'-)infection [60]. This is also true for Ab-opsonized HIV-1, if CD4<sup>+</sup> T cells are added immediately to HIV-exposed DC [41]. Especially C-type lectins, such as DC-SIGN on dermal DC, were connected to transmitting HIV-1 to T cells in the LN [60, 61]. Similar to Langerin, DC-SIGN has high affinity for mannose and fucose structures, but despite sharing this feature these receptors exert completely different effects and functions regarding pathogen processing. Dermal CD103<sup>+</sup> DC express DC-SIGN, which captures low titres of HIV-1 by interaction with the envelope glycoprotein gp120 [62]. By complexing DC-SIGN via gp120, HIV-1 is protected from degradation within the DC in contrast to Langerin, which promotes degradation of the virus through Birbeck granules as described above [24, 62]. DC-SIGN-complexed HIV-1 remains stable and infectious over prolonged periods of time within non-lysosomal acidic organelles

of DC [62, 63]. Thereby, DC-SIGN efficiently transfers HIV-1 to CD4<sup>+</sup> T cells, enhances infection in DC-CD4<sup>+</sup> T cell co-cultures and facilitates 'trans'-infection of the T cells [62].



**Figure 4.** Binding of differentially opsonized HIV (non-opsonized HIV, HIV-C, HIV-Ig) in absence and presence of a blocking anti-human DC-SIGN, CR3 [CD11b] (TMG6.5) or CD32 (AT-10) antibodies. Binding of non-opsonized HIV was significantly decreased in the presence of a blocking anti-DC-SIGN Ab, but not affected by pre-incubation of the cells with a blocking anti-CR3- or CD32-Ab (white bars). HIV-C-interaction with DC was inhibited using a blocking anti-CD11b (CR3)-Ab TMG6.5, but not by anti-DC-SIGN or CD32 (grey bars). Binding of IgG-opsonized HIV was inhibited by using a blocking anti-human CD32, but not DC-SIGN or CD11b-Ab (black bars).

Lastly, the antigen-presenting capacity of DC was also shown to be modulated by the opsonization pattern of the virus [58]. Earlier studies illustrated the role of complement opsonization respecting induction of effective CTL responses against viral infections, but the exact mechanism was not determined [64-66]. The exclusive role of DC in priming naïve CD8<sup>+</sup> T cells in response to exogenous cell-associated as well as endogenously synthesized Ags has been shown [67, 68]. Endogenously synthesized antigens from DC infected with LCMV (choriomeningitis virus) mediated strong CTL responses, while macrophages and B cells infected with LCMV did not induce CTLs [68].

We recently found that opsonization of retroviral particles with complement fragments enhanced the ability of DC to induce CTL responses both *in vitro* and *in vivo* [58]. HIV-C-loaded DC mediated significantly higher CD8<sup>+</sup> T cell expansion and significantly better antiviral activity than DC exposed to non-opsonized HIV *in vitro*. This was further verified

*in vivo* using the murine Friend virus model. These results indicated that 'complement acts as natural adjuvant for DC-induced expansion and differentiation of specific CTLs against retroviruses' [58].

Additionally, we demonstrated that in contrast to complement opsonization, antibody-coating of the viral surface attenuated the CTL-stimulatory capacity of HIV-exposed DC [69]. In some HIV-1-positive individuals, high levels of antibodies and low levels of complement fragments coat the HIV-1 surface and therefore we investigated the effects of the non-neutralizing Abs bound to the surface of HIV-1 on the CTL-stimulatory capacity of DC. We observed *ex vivo* and *in vitro* that DC loaded with IgG-opsonized HIV significantly impaired the HIV-1-specific CD8<sup>+</sup> T cell response compared to the earlier described efficient CD8<sup>+</sup> T cell activation induced by DC exposed to complement-opsonized HIV. These novel modulatory effects of the HIV-1-opsonization pattern on the CTL-activating capacity of DC might influence future vaccination strategies, since strong transient Ab responses subsequent to vaccination might weaken the CTL-induction by DC, which has to be considered [69].

Preferential expression of CCR5 on immature LC and DC restricts the transmission of X4-tropic isolates at the site of infection. Additionally, *ex vivo* analyses revealed that X4-tropic HIV replicate worse in DC and LC compared to R5-tropic viruses [31, 70, 71]. The relatively low susceptibility of DC to HIV-1-infection but efficient transfer of virus to CD4<sup>+</sup> T cells was lately ascribed to an HIV-1 escape mechanism from innate recognition by DC [72, 73]. Manel et al. [72] showed that if DC by-pass resistance to HIV-1 infection [74, 75], they mature, exert a type I IFN response as well as adaptive immune responses. More recently, Laguette et al. [73] described the restriction factor SAMHD1 (SAM domain and HD domain-containing protein 1) to be responsible for inhibiting HIV-1 replication in DC and other cells of the myeloid lineage by degrading or preventing accumulation of HIV-1 DNA due to a putative nucleotidase activity. As shown by Lahouassa et al. [76], SAMHD1 depletes the pool of intracellular dNTPs and thus restricts HIV-1 infection in DC by blocking reverse transcription. These recent important findings respecting a formerly unknown cryptic innate sensor in DC, SAMHD1, and the induction of an efficient type I IFN and adaptive immune response due to DC infection might pave the way for novel therapeutical approaches to treat retroviral infections.

### 2.1.3. Blood DC and HIV

#### 2.1.3.1. BDCA1<sup>+</sup> DC, BDCA3<sup>+</sup> DC, CD56<sup>+</sup> DC and HIV

BDCA1<sup>+</sup> myeloid DC can be directly isolated from human blood. This population was described to be reduced in the blood of HIV-infected individuals [76-78]. We found that BDCA1<sup>+</sup> DC exerted a decreased transmission of HIV-1 to autologous CD4<sup>+</sup> T cells, when the virus was opsonized with specific IgGs in contrast to non- or complement-opsonized HIV-1 and when the T cells were added delayed [41]. When CD4<sup>+</sup> T cells were immediately added after washing the differentially loaded DC, the same infection efficiency was observed using HIV, HIV-C or HIV-Ig [41]. The two-phase transfer of HIV to DC as described above (*trans*-infection: by-passing of the virus from endolysosomal compartments, first 24 hrs; *cis*-infect-

tion: 'de novo' HIV-1-infection of DC before transfer to T cells) was also observable in BDCA1<sup>+</sup> DC, because non- and complement-opsonized HIV-1, which cause productive infection of DC, efficiently infected autologous CD4<sup>+</sup> T cells in short- and long-term co-cultures. BDCA1<sup>+</sup> DC exposed to IgG-opsonized HIV-1, which were not productively infected by the virus, were not able to promote long-term transfer of HIV-1 to susceptible T cells [41].

BDCA3<sup>+</sup> DC represent the human equivalent to mouse CD8 $\alpha$ <sup>+</sup> DC and they are the major producers of IFN- $\lambda$  in response to dsRNA poly I:C [80]. As recently described by Dutertre et al. [81] using an 11-color flow cytometric strategy, circulating BDCA1<sup>+</sup> DC and BDCA3<sup>+</sup> DC counts were reduced in 15 viremic, untreated patients compared to 8 HIV-1-positive individuals under treatment and 13 healthy donors. By using this method, they illustrated that both blood DC subsets expressed characteristic lineage markers: BDCA1<sup>+</sup> DC expressed CD14, while particularly BDCA3<sup>+</sup> DC displayed CD56 on their surface. BDCA3<sup>+</sup> DC were shown to be more significantly down-modulated in viremic patients compared to controls [82] and it remains to be investigated by longitudinal studies, if combined antiretroviral therapy can restore the pool of circulating myeloid BDCA1<sup>+</sup> and BDCA3<sup>+</sup> DC.

Blood CD56<sup>+</sup> DC were recently described by Gruenbacher et al. [83] and comprise intermediate-sized lymphocytes with an HLA-DR<sup>high</sup>, CD80<sup>+</sup> and CD86<sup>+</sup> expression profile. Upon cultivation they acquire DC-like morphology with increased levels of above mentioned surface markers. Upon stimulation, they are able to efficiently stimulate CD56<sup>+</sup> $\gamma\delta$  T cells, which results in secretion of IFN $\gamma$ , TNF- $\alpha$ , and IL-1 $\beta$  [84]. The role of CD56<sup>+</sup> DC respecting HIV-1 infection and pathogenesis needs to be further investigated.

## 2.2. pDC and HIV

Plasmacytoid DC (pDC) (Figure 1) or type 1 IFN-producing dendritic cells are innate immune cells in blood, which are specialized in releasing massive amounts of IFN $\alpha$  and IFN $\beta$  upon viral challenge, including HIV-1 [83]. They constitute <0.2-0.5% of peripheral blood mononuclear cells (PBMC) [85] and in humans, pDC express the characteristic surface markers BDCA-2 (CD303, CLEC4C) and CD123 along with BDCA4 (CD304, NRP1), but they do not express CD11c, a marker of myeloid DC, or CD14 [86].

pDCs are key players of the innate immune response *in vivo* and they can prime adaptive immunity due to the afore mentioned production of high type I interferon levels, especially upon exposure to viral products [15, 83]. Upon stimulation with DNA or RNA viruses, they produce up to 1000-fold higher amounts of type I interferons than other cells [84, 87, 88]. The IFN $\alpha$  production in pDC by viruses represents a two-step process – uptake of viruses occurs due to recognition of envelope glycoproteins by C-type lectin receptors, e.g. mannose receptor or BDCA2, but induction of IFN $\alpha$  in fact starts in endosomal compartments by ligation of TLR9 or TLR7 [89-91]. Pathogenic single-stranded RNA or unmethylated DNA are mainly recognized by TLR7 and TLR9 expressed inside pDC [92]. Thus, the viruses have to be ingested by pDC into endosomes and NF $\kappa$ B- and MAPK signals through MyD88 must be stimulated [93]. Not only viruses, but also virus-infected cells can potentially activate IFN $\alpha$  production from pDC [94]. Once activated, pDCs mature and produce large quantities of pro-inflammatory and antiviral cytokines [95-97]. pDC respond with high amounts of differ-



ent IFN $\alpha$  subsets, IFN $\beta$ , IFN $\kappa$ , IFN $\lambda$  and IFN $\omega$  on a wide range of enveloped viruses including HIV-1. They additionally produce pro-inflammatory cytokines TNF $\alpha$ , IFN $\gamma$  and IL-6 as well as chemokines CXCL-10, CCL-5 and CCL-4 among others [98]. Thereby, pDC also act as a linker between innate and adaptive immunity.

Data by Zhou et al. [99] indicate that subsequent to HIV-1 challenge, signaling via TLR7 triggers autophagy and increased IFN $\alpha$  production from human pDC. The IFN $\alpha$  secretion mediated by an autophagy-dependent pathway may play an important role for T cell triggering during HIV-1 pathogenesis.

Beside acting as pro-inflammatory cells, pDC also provide negative regulatory signals and thus induce tolerance. pDC express IDO (indoleamine 2,3-dioxygenase) and PDL-1 (programmed death ligand; 1) which are associated with the negative modulation of T cell responses and regulatory T cell induction [100-102].

During acute HIV-1 infection, NK cells are recruited and activated by pDC to the sites of infection and to LN due to IFN $\alpha$  secretion [103, 104]. IFN $\alpha$  was demonstrated to increase the perforin levels in NK and CD8 $^+$  T cells. At the sites of infection 'DC-editing' occurs by NK cells, since activated NK cells delete immature pDC to select for the more immunogenic mature pDC [105-108]. Beside NK cell recruitment and activation, pDC-secreted IFN $\alpha$  promotes maturation and migration of other DC subsets. Due to their localization, it is unlikely that pDC are involved in HIV-1 capture, transport and transmission, but they are supposed to control HIV-1 in the acute phase of infection due to their immediate antiviral and NK priming activity.

Chronic exposure to HIV-1 leads to hyperactivation of pDC resulting in simultaneous type I IFN secretion and IDO expression. Thus, pDC concurrently exert cytotoxic and suppressive effects on T cells during chronic HIV-1 infection [109].

HIV-1 infection not only disrupts DC homeostasis within myeloid DC subsets, but also pDC homeostasis is defective during chronic HIV-1 infection. cDC and pDC are lost from blood, which correlates with high viral loads and low CD4 $^+$  T cell counts [76, 110-113]. Deficiencies in pDC function were among the earliest observations of immune dysfunction in HIV-1 infection and some of the earliest studies of the 'natural IFN- $\alpha$ -producing cells' (i.e. pDC) illustrated that PBMC from AIDS patients were severely compromised in their ability to produce IFN- $\alpha$  *in vitro* after stimulation with the virus.

Cell death and/or a failure of bone marrow progenitors to differentiate into pDC might contribute to the loss of pDC from blood of chronically infected individuals. In non-pathogenic models of SIV infection, no depletion of blood pDC was observed [114, 115] and HIV-1-positive individuals, who are able to control infection (= long-term non-progressors) were also shown to have increased numbers of blood pDC [111]. In contrast, it was described that during HIV-2 infection, which is highly attenuated compared to HIV-1 infection in humans, also the numbers of blood pDC is found reduced [116]. Thereby, the exact role of pDC depletion during HIV infection is not clear yet.

The depletion of cDC from the sites of infection was ascribed to a higher expression of CCR7 on the surface of cDC and a significantly increased CCL19 expression in LN of SIV-infected

animals, thus suggesting that inflamed LN lure cDC away from the sites of infection early during progressive SIV infection [117]. A similar mechanism can be imagined for pDC, which are recruited to inflamed LN via CXCL9 and E-selectin [16, 118], but the pDC loss could also be due to direct infection, enhanced apoptosis or CD95 up-regulation [119-123].

Not only pDC numbers are decreased during on-going HIV-1 infection, but also the quality of the cells is suffering. They exert a reduced ability to migrate towards the CXCR4 ligand CXCL12 [124], they stimulate Treg cells to dampen HIV-1 immunity and they furthermore shift the Treg-Th17 balance [125, 126]. So far, interactions of differentially opsonized HIV-1 preparations with pDC has not been investigated.

### 3. Outlook: Impact of the HIV-1 opsonization pattern on DC function

As follows of investigations on HIV-1 in the last 30 years, antibody responses against the virus are not effective and cellular immune responses not powerful enough to suppress or even control HIV-1. DC, the prime inducers and regulators of immunity and tolerance, are crucial in designing modern vaccines [127-130]. Therefore, nowadays vaccine science shall combine established classical vaccine approaches with new attempts based on the expanded immunological knowledge.

Innate and adaptive immune responses are needed to generate efficient, long-lasting protection. Immediate innate responses involve activation of the complement system, ligation of pattern recognition receptors e.g. TLRs, C-type lectins, activation of NK cells, cDC and pDC, and type I, II, as well as III interferons. For viral clearance, the optimal balance between CD4<sup>+</sup> and CD8<sup>+</sup> T cells is required during the adaptive immune responses. Current HIV-1 vaccination strategies include the use of peptides or monocyte-derived DC exposed to chemically inactivated HIV-1 and aim in designing a vaccine efficiently inducing both, cellular and humoral immune responses [131-133]. So far, disappointing results have been achieved in clinical trials targeting either cellular [134, 135] or humoral immunity [136, 137]. The most prominent AIDS vaccine trial so far was the RV144 in Thailand [138], which evoked strong, but transient Env-specific CD4<sup>+</sup> T cell and Ab responses, but only weak HIV-specific CD8<sup>+</sup> T cell responses [131, 138].

HIV-1 induces immediate responses of the immune system upon entering mucosal surfaces. There, the complement system constitutes a first line of defense against the virus. Recently, we illustrated an important role for complement opsonization of retroviruses as an endogenous adjuvant for DC-mediated CTL-induction [58].

Efficient early CD8<sup>+</sup> T cell responses are crucial in controlling HIV-1 replication and their key role in HIV-1 control is additionally substantiated by association of certain HLA class I alleles and an improved disease progression [139-141]. In view of our very recent observations ([58], [69]), we propose that CD8<sup>+</sup> T cells are efficiently primed by DC during acute viral infection, particularly by enhanced infection of DC with HIV-C [41]. Thus, more efficient presentation of endogenously synthesized viral Ags via HLA-ABC [41], and ore efficient

cross-presentation from incoming complement-opsonized HIV-1 are mediated. In contrast, Ab-opsonization of HIV-1 weakens the CTL-induction by modulation of DC function and might influence future vaccination strategies [69].

As shown by Lu et al. [142-144] *in vitro* and *in vivo*, DC exposed to chemically (aldrithiol-2, AT-2)-inactivated HIV or SIV induced a virus-specific CTL response. This response was strong enough to kill HIV-1-infected CD4<sup>+</sup> T cells [142], to control the viral load in SIV-infected monkeys [143] and HIV-infected individuals [144]. The decrease of the viral load in the HIV-1-infected patients was associated with a higher amount of HIV-1-gag-specific CD8<sup>+</sup> T cells and HIV-1-specific CD4<sup>+</sup> T cells.

LC were described to allow more cross-priming of CD8<sup>+</sup> T cells, while dermal DC are more specialized in priming naive CD4<sup>+</sup> T cells [145]. The finding that complement-opsonization of HIV prior loading of DC significantly enhanced the CD8<sup>+</sup> T cell-stimulatory capacity of the cells in combination with using specific DC subtypes might efficiently improve future vaccination strategies and there is good reason to address DC of the skin, especially Langerhans cells, for purposes of vaccination.

A greater understanding of the innate and adaptive processes and the different functions of DC subsets to HIV-1 infection will lead to development of an effective vaccine.

## Acknowledgements

The authors would like to thank Nikolaus Romani and Hella Stössl for providing the transmission electron microscopic picture.

The work of the authors is supported by the Austrian Science Fund [FWF, P22165 and P24598 to DW], the Tyrolean Science Fund [TWF, project: D-155140-016-011 to WP] and the OeNB [project: 14875 to WP].

## Author details

Wilfried Posch, Cornelia Lass-Flörl and Doris Wilflingseder

Innsbruck Medical University, Division of Hygiene and Medical Microbiology, Innsbruck, Austria

## References

- [1] Steinman RM, Hemmi H. Dendritic cells: translating innate to adaptive immunity. *Curr Top Microbiol Immunol* 2006; 311:17-58.

- [2] Steinman RM, Idoyaga J. Features of the dendritic cell lineage. *Immunol Rev* 2010; 234:5-17.
- [3] Steinman RM, Cohn ZA. Identification of a novel cell type in peripheral lymphoid organs of mice. I. Morphology, quantitation, tissue distribution. *J Exp Med* 1973; 137:1142-62.
- [4] Fernandez NC, Lozier A, Flament C, et al. Dendritic cells directly trigger NK cell functions: cross-talk relevant in innate anti-tumor immune responses in vivo. *Nat Med* 1999; 5:405-11.
- [5] Romani N, Holzmann S, Tripp CH, Koch F, Stoitzner P. Langerhans cells - dendritic cells of the epidermis. *APMIS* 2003; 111:725-40.
- [6] McLellan AD, Heiser A, Sorg RV, Fearnley DB, Hart DN. Dermal dendritic cells associated with T lymphocytes in normal human skin display an activated phenotype. *J Invest Dermatol* 1998; 111:841-9.
- [7] Dupasquier M, Stoitzner P, van Oudenaren A, Romani N, Leenen PJ. Macrophages and dendritic cells constitute a major subpopulation of cells in the mouse dermis. *J Invest Dermatol* 2004; 123:876-9.
- [8] Banchereau J, Steinman RM. Dendritic cells and the control of immunity. *Nature* 1998; 392:245-52.
- [9] Doulatov S, Notta F, Eppert K, Nguyen LT, Ohashi PS, Dick JE. Revised map of the human progenitor hierarchy shows the origin of macrophages and dendritic cells in early lymphoid development. *Nat Immunol* 2010; 11:585-93.
- [10] Schlenner SM, Madan V, Busch K, et al. Fate mapping reveals separate origins of T cells and myeloid lineages in the thymus. *Immunity* 2010; 32:426-36.
- [11] Heath WR, Carbone FR. Dendritic cell subsets in primary and secondary T cell responses at body surfaces. *Nat Immunol* 2009; 10:1237-44.
- [12] Merad M, Manz MG. Dendritic cell homeostasis. *Blood* 2009; 113:3418-27.
- [13] Randolph GJ, Ochando J, Partida-Sanchez S. Migration of dendritic cell subsets and their precursors. *Annu Rev Immunol* 2008; 26:293-316.
- [14] Altfeld M, Fadda L, Frleta D, Bhardwaj N. DCs and NK cells: critical effectors in the immune response to HIV-1. *Nat Rev Immunol* 2011; 11:176-86.
- [15] Cella M, Jarrossay D, Facchetti F, et al. Plasmacytoid monocytes migrate to inflamed lymph nodes and produce large amounts of type I interferon. *Nat Med* 1999; 5:919-23.
- [16] Yoneyama H, Matsuno K, Zhang Y, et al. Evidence for recruitment of plasmacytoid dendritic cell precursors to inflamed lymph nodes through high endothelial venules. *Int Immunol* 2004; 16:915-28.



- [17] Yoneyama H, Matsuno K, Toda E, et al. Plasmacytoid DCs help lymph node DCs to induce anti-HSV CTLs. *J Exp Med* 2005; 202:425-35.
- [18] Katz SI, Tamaki K, Sachs DH. Epidermal Langerhans cells are derived from cells originating in bone marrow. *Nature* 1979; 282:324-6.
- [19] Romani N, Stingl G, Tschachler E, et al. The Thy-1-bearing cell of murine epidermis. A distinctive leukocyte perhaps related to natural killer cells. *J Exp Med* 1985; 161:1368-83.
- [20] de Jong MA, Geijtenbeek TB. Langerhans cells in innate defense against pathogens. *Trends Immunol* 2010; 31:452-9.
- [21] Romani N, Clausen BE, Stoitzner P. Langerhans cells and more: langerin-expressing dendritic cell subsets in the skin. *Immunol Rev* 2010; 234:120-41.
- [22] Merad M, Ginhoux F, Collin M. Origin, homeostasis and function of Langerhans cells and other langerin-expressing dendritic cells. *Nat Rev Immunol* 2008; 8:935-47.
- [23] Villablanca EJ, Mora JR. A two-step model for Langerhans cell migration to skin-draining LN. *Eur J Immunol* 2008; 38:2975-80.
- [24] de Witte L, Nabatov A, Pion M, et al. Langerin is a natural barrier to HIV-1 transmission by Langerhans cells. *Nat Med* 2007; 13:367-71.
- [25] de Witte L, Nabatov A, Geijtenbeek TB. Distinct roles for DC-SIGN<sup>+</sup>-dendritic cells and Langerhans cells in HIV-1 transmission. *Trends Mol Med* 2008; 14:12-9.
- [26] Valladeau J, Ravel O, Dezutter-Dambuyant C, et al. Langerin, a novel C-type lectin specific to Langerhans cells, is an endocytic receptor that induces the formation of Birbeck granules. *Immunity* 2000; 12:71-81.
- [27] Liu YJ. Dendritic cell subsets and lineages, and their functions in innate and adaptive immunity. *Cell* 2001; 106:259-62.
- [28] Flacher V, Bouschbacher M, Verronese E, et al. Human Langerhans cells express a specific TLR profile and differentially respond to viruses and Gram-positive bacteria. *J Immunol* 2006; 177:7959-67.
- [29] Fahrback KM, Barry SM, Ayehunie S, Lamore S, Klausner M, Hope TJ. Activated CD34-derived Langerhans cells mediate transinfection with human immunodeficiency virus. *J Virol* 2007; 81:6858-68.
- [30] Blauvelt A, Glushakova S, Margolis LB. HIV-infected human Langerhans cells transmit infection to human lymphoid tissue ex vivo. *AIDS* 2000; 14:647-51.
- [31] Kawamura T, Azuma M, Kayagaki N, Shimada S, Yagita H, Okumura K. Fas/Fas ligand-mediated apoptosis of murine Langerhans cells. *J Dermatol Sci* 2000; 22:96-101.
- [32] Kawamura T, Qualbani M, Thomas EK, Orenstein JM, Blauvelt A. Low levels of productive HIV infection in Langerhans cell-like dendritic cells differentiated in the

presence of TGF-beta1 and increased viral replication with CD40 ligand-induced maturation. *Eur J Immunol* 2001; 31:360-8.

- [33] Wu L, KewalRamani VN. Dendritic-cell interactions with HIV: infection and viral dissemination. *Nat Rev Immunol* 2006; 6:859-68.
- [34] Birbeck MS. Electron microscopy of melanocytes. *Br Med Bull* 1962; 18:220-2.
- [35] Hunger RE, Sieling PA, Ochoa MT, et al. Langerhans cells utilize CD1a and langerin to efficiently present nonpeptide antigens to T cells. *J Clin Invest* 2004; 113:701-8.
- [36] de Jong MA, de Witte L, Oudhoff MJ, Gringhuis SI, Gallay P, Geijtenbeek TB. TNF-alpha and TLR agonists increase susceptibility to HIV-1 transmission by human Langerhans cells ex vivo. *J Clin Invest* 2008; 118:3440-52.
- [37] Ogawa Y, Kawamura T, Kimura T, Ito M, Blauvelt A, Shimada S. Gram-positive bacteria enhance HIV-1 susceptibility in Langerhans cells, but not in dendritic cells, via Toll-like receptor activation. *Blood* 2009; 113:5157-66.
- [38] Ebenbichler CF, Thielens NM, Vornhagen R, Marschang P, Arlaud GJ, Dierich MP. Human immunodeficiency virus type 1 activates the classical pathway of complement by direct C1 binding through specific sites in the transmembrane glycoprotein gp41. *J Exp Med* 1991; 174:1417-24.
- [39] Spear GT, Jiang HX, Sullivan BL, Gewurz H, Landay AL, Lint TF. Direct binding of complement component C1q to human immunodeficiency virus (HIV) and human T lymphotropic virus-I (HTLV-I) coinfecting cells. *AIDS Res Hum Retroviruses* 1991; 7:579-85.
- [40] Stoiber H, Clivio A, Dierich MP. Role of complement in HIV infection. *Annu Rev Immunol* 1997; 15:649-74.
- [41] Wilflingseder D, Banki Z, Garcia E, et al. IgG opsonization of HIV impedes provirus formation in and infection of dendritic cells and subsequent long-term transfer to T cells. *J Immunol* 2007; 178:7840-8.
- [42] Pruenster M, Wilflingseder D, Banki Z, et al. C-type lectin-independent interaction of complement opsonized HIV with monocyte-derived dendritic cells. *Eur J Immunol* 2005; 35:2691-8.
- [43] Auvert B, Taljaard D, Lagarde E, Sobngwi-Tambekou J, Sitta R, Puren A. Randomized, controlled intervention trial of male circumcision for reduction of HIV infection risk: the ANRS 1265 Trial. *PLoS Med* 2005; 2:e298.
- [44] Mazzoli S, Trabattoni D, Lo Caputo S, et al. HIV-specific mucosal and cellular immunity in HIV-seronegative partners of HIV-seropositive individuals. *Nat Med* 1997; 3:1250-7.
- [45] Tudor D, Derrien M, Diomedede L, et al. HIV-1 gp41-specific monoclonal mucosal IgAs derived from highly exposed but IgG-seronegative individuals block HIV-1 epithe-

- lial transcytosis and neutralize CD4(+) cell infection: an IgA gene and functional analysis. *Mucosal Immunol* 2009; 2:412-26.
- [46] Tudor D, Yu H, Maupetit J, et al. Isotype modulates epitope specificity, affinity, and antiviral activities of anti-HIV-1 human broadly neutralizing 2F5 antibody. *Proc Natl Acad Sci U S A* 2012; 109:12680-5.
- [47] Shen R, Drelichman ER, Bimczok D, et al. GP41-specific antibody blocks cell-free HIV type 1 transcytosis through human rectal mucosa and model colonic epithelium. *J Immunol* 2010; 184:3648-55.
- [48] Bell D, Young JW, Banchereau J. Dendritic cells. *Adv Immunol* 1999; 72:255-324.
- [49] Pavli P, Woodhams CE, Doe WF, Hume DA. Isolation and characterization of antigen-presenting dendritic cells from the mouse intestinal lamina propria. *Immunology* 1990; 70:40-7.
- [50] Pavli P, Hume DA, Van De Pol E, Doe WF. Dendritic cells, the major antigen-presenting cells of the human colonic lamina propria. *Immunology* 1993; 78:132-41.
- [51] Lenz A, Heine M, Schuler G, Romani N. Human and murine dermis contain dendritic cells. Isolation by means of a novel method and phenotypical and functional characterization. *J Clin Invest* 1993; 92:2587-96.
- [52] Nestle FO, Zheng XG, Thompson CB, Turka LA, Nickoloff BJ. Characterization of dermal dendritic cells obtained from normal human skin reveals phenotypic and functionally distinctive subsets. *J Immunol* 1993; 151:6535-45.
- [53] Klatt NR, Estes JD, Sun X, et al. Loss of mucosal CD103+ DCs and IL-17+ and IL-22+ lymphocytes is associated with mucosal damage in SIV infection. *Mucosal Immunol* 2012.
- [54] Presicce P, Shaw JM, Miller CJ, Shacklett BL, Chougnet CA. Myeloid dendritic cells isolated from tissues of SIV-infected Rhesus macaques promote the induction of regulatory T cells. *AIDS* 2012; 26:263-73.
- [55] Frank I, Piatak M, Jr., Stoessel H, et al. Infectious and whole inactivated simian immunodeficiency viruses interact similarly with primate dendritic cells (DCs): differential intracellular fate of virions in mature and immature DCs. *J Virol* 2002; 76:2936-51.
- [56] Pope M, Gezelter S, Gallo N, Hoffman L, Steinman RM. Low levels of HIV-1 infection in cutaneous dendritic cells promote extensive viral replication upon binding to memory CD4+ T cells. *J Exp Med* 1995; 182:2045-56.
- [57] McDonald D, Wu L, Bohks SM, KewalRamani VN, Unutmaz D, Hope TJ. Recruitment of HIV and its receptors to dendritic cell-T cell junctions. *Science* 2003; 300:1295-7.
- [58] Banki Z, Posch W, Ejaz A, et al. Complement as an endogenous adjuvant for dendritic cell-mediated induction of retrovirus-specific CTLs. *PLoS Pathog* 2010; 6:e1000891.

- [59] Piguet V, Steinman RM. The interaction of HIV with dendritic cells: outcomes and pathways. *Trends Immunol* 2007; 28:503-10.
- [60] Turville SG, Santos JJ, Frank I, et al. Immunodeficiency virus uptake, turnover, and 2-phase transfer in human dendritic cells. *Blood* 2004; 103:2170-9.
- [61] Geijtenbeek TB, van Vliet SJ, Engering A, t Hart BA, van Kooyk Y. Self- and nonself-recognition by C-type lectins on dendritic cells. *Annu Rev Immunol* 2004; 22:33-54.
- [62] Geijtenbeek TB, Kwon DS, Torensma R, et al. DC-SIGN, a dendritic cell-specific HIV-1-binding protein that enhances trans-infection of T cells. *Cell* 2000; 100:587-97.
- [63] Engering A, Geijtenbeek TB, van Kooyk Y. Immune escape through C-type lectins on dendritic cells. *Trends Immunol* 2002; 23:480-5.
- [64] Kopf M, Abel B, Gallimore A, Carroll M, Bachmann MF. Complement component C3 promotes T-cell priming and lung migration to control acute influenza virus infection. *Nat Med* 2002; 8:373-8.
- [65] Suresh M, Molina H, Salvato MS, Mastellos D, Lambris JD, Sandor M. Complement component 3 is required for optimal expansion of CD8 T cells during a systemic viral infection. *J Immunol* 2003; 170:788-94.
- [66] Mehlhop E, Diamond MS. Protective immune responses against West Nile virus are primed by distinct complement activation pathways. *J Exp Med* 2006; 203:1371-81.
- [67] Jung S, Unutmaz D, Wong P, et al. In vivo depletion of CD11c<sup>+</sup> dendritic cells abrogates priming of CD8<sup>+</sup> T cells by exogenous cell-associated antigens. *Immunity* 2002; 17:211-20.
- [68] Probst HC, van den Broek M. Priming of CTLs by lymphocytic choriomeningitis virus depends on dendritic cells. *J Immunol* 2005; 174:3920-4.
- [69] Posch W, Cardinaud S, Hamimi C, Fletcher A, Mühlbacher A, Loacker K, Eichberger P, Dierich MP, Pancino G, Lass-Flörl C, Moris A, Saez-Cirion A, Wilflingseder D. Antibodies attenuate the capacity of dendritic cells to stimulate HIV-specific CTLs. *J All Clin Imm* 2012; accepted
- [70] Granelli-Piperno A, Delgado E, Finkel V, Paxton W, Steinman RM. Immature dendritic cells selectively replicate macrophagetropic (M-tropic) human immunodeficiency virus type 1, while mature cells efficiently transmit both M- and T-tropic virus to T cells. *J Virol* 1998; 72:2733-7.
- [71] Ganesh L, Leung K, Lore K, et al. Infection of specific dendritic cells by CCR5-tropic human immunodeficiency virus type 1 promotes cell-mediated transmission of virus resistant to broadly neutralizing antibodies. *J Virol* 2004; 78:11980-7.
- [72] Manel N, Hogstad B, Wang Y, Levy DE, Unutmaz D, Littman DR. A cryptic sensor for HIV-1 activates antiviral innate immunity in dendritic cells. *Nature* 2010; 467:214-7.



- [73] Laguette N, Sobhian B, Casartelli N, et al. SAMHD1 is the dendritic- and myeloid-cell-specific HIV-1 restriction factor counteracted by Vpx. *Nature* 2011; 474:654-7.
- [74] Mangeot PE, Duperrier K, Negre D, et al. High levels of transduction of human dendritic cells with optimized SIV vectors. *Mol Ther* 2002; 5:283-90.
- [75] Goujon C, Jarrosson-Wuilleme L, Bernaud J, Rigal D, Darlix JL, Cimorelli A. With a little help from a friend: increasing HIV transduction of monocyte-derived dendritic cells with virion-like particles of SIV(MAC). *Gene Ther* 2006; 13:991-4.
- [76] Lahouassa H, Daddacha W, Hofmann H, et al. SAMHD1 restricts the replication of human immunodeficiency virus type 1 by depleting the intracellular pool of deoxy-nucleoside triphosphates. *Nat Immunol* 2012; 13:223-8.
- [77] Grassi F, Hosmalin A, McIlroy D, Calvez V, Debre P, Autran B. Depletion in blood CD11c-positive dendritic cells from HIV-infected patients. *AIDS* 1999; 13:759-66.
- [78] Donaghy H, Pozniak A, Gazzard B, et al. Loss of blood CD11c(+) myeloid and CD11c(-) plasmacytoid dendritic cells in patients with HIV-1 infection correlates with HIV-1 RNA virus load. *Blood* 2001; 98:2574-6.
- [79] Pacanowski J, Kahi S, Baillet M, et al. Reduced blood CD123+ (lymphoid) and CD11c + (myeloid) dendritic cell numbers in primary HIV-1 infection. *Blood* 2001; 98:3016-21.
- [80] Luci C, Anjuere F. IFN-lambdas and BDCA3+/CD8alpha+ dendritic cells: towards the design of novel vaccine adjuvants? *Expert Rev Vaccines* 2011; 10:159-61.
- [81] Dutertre CA, Amraoui S, Derosa A, et al. Pivotal role of M-DC8+ monocytes from viremic HIV-infected patients in TNFalpha over-production in response to microbial products. *Blood* 2012.
- [82] Chehimi J, Campbell DE, Azzoni L, et al. Persistent decreases in blood plasmacytoid dendritic cell number and function despite effective highly active antiretroviral therapy and increased blood myeloid dendritic cells in HIV-infected individuals. *J Immunol* 2002; 168:4796-801.
- [83] Gruenbacher G, Gander H, Rahm A, Nussbaumer W, Romani N, Thurnher M. CD56+ human blood dendritic cells effectively promote TH1-type gammadelta T-cell responses. *Blood* 2009; 114:4422-31.
- [84] Siegal FP, Kadowaki N, Shodell M, et al. The nature of the principal type 1 interferon-producing cells in human blood. *Science* 1999; 284:1835-7.
- [85] Tversky JR, Le TV, Bieneman AP, Chichester KL, Hamilton RG, Schroeder JT. Human blood dendritic cells from allergic subjects have impaired capacity to produce interferon-alpha via Toll-like receptor 9. *Clin Exp Allergy* 2008; 38:781-8.
- [86] O'Doherty U, Peng M, Gezelter S, et al. Human blood contains two subsets of dendritic cells, one immunologically mature and the other immature. *Immunology* 1994; 82:487-93.

- [87] Fanning SL, George TC, Feng D, et al. Receptor cross-linking on human plasmacytoid dendritic cells leads to the regulation of IFN- $\alpha$  production. *J Immunol* 2006; 177:5829-39.
- [88] Fitzgerald-Bocarsly P, Dai J, Singh S. Plasmacytoid dendritic cells and type I IFN: 50 years of convergent history. *Cytokine Growth Factor Rev* 2008; 19:3-19.
- [89] Milone MC, Fitzgerald-Bocarsly P. The mannose receptor mediates induction of IFN- $\alpha$  in peripheral blood dendritic cells by enveloped RNA and DNA viruses. *J Immunol* 1998; 161:2391-9.
- [90] Dzionek A, Sohma Y, Nagafune J, et al. BDCA-2, a novel plasmacytoid dendritic cell-specific type II C-type lectin, mediates antigen capture and is a potent inhibitor of interferon  $\alpha$ /beta induction. *J Exp Med* 2001; 194:1823-34.
- [91] Krug A, French AR, Barchet W, et al. TLR9-dependent recognition of MCMV by IPC and DC generates coordinated cytokine responses that activate antiviral NK cell function. *Immunity* 2004; 21:107-19.
- [92] Hemmi H, Kaisho T, Takeuchi O, et al. Small anti-viral compounds activate immune cells via the TLR7 MyD88-dependent signaling pathway. *Nat Immunol* 2002; 3:196-200.
- [93] Gill MA, Bajwa G, George TA, et al. Counterregulation between the Fc $\epsilon$ RI pathway and antiviral responses in human plasmacytoid dendritic cells. *J Immunol* 2010; 184:5999-6006.
- [94] Beignon AS, McKenna K, Skoberne M, et al. Endocytosis of HIV-1 activates plasmacytoid dendritic cells via Toll-like receptor-viral RNA interactions. *J Clin Invest* 2005; 115:3265-75.
- [95] Kadowaki N, Antonenko S, Lau JY, Liu YJ. Natural interferon  $\alpha$ /beta-producing cells link innate and adaptive immunity. *J Exp Med* 2000; 192:219-26.
- [96] Ito T, Amakawa R, Kaisho T, et al. Interferon- $\alpha$  and interleukin-12 are induced differentially by Toll-like receptor 7 ligands in human blood dendritic cell subsets. *J Exp Med* 2002; 195:1507-12.
- [97] 97. Colonna M. Alerting dendritic cells to pathogens: the importance of Toll-like receptor signaling of stromal cells. *Proc Natl Acad Sci U S A* 2004; 101:16083-4.
- [98] Fitzgerald-Bocarsly P, Jacobs ES. Plasmacytoid dendritic cells in HIV infection: striking a delicate balance. *J Leukoc Biol* 2010; 87:609-20.
- [99] Zhou D, Kang KH, Spector SA. Production of interferon  $\alpha$  by human immunodeficiency virus type 1 in human plasmacytoid dendritic cells is dependent on induction of autophagy. *J Infect Dis* 2012; 205:1258-67.
- [100] Boasso A, Shearer GM. Chronic innate immune activation as a cause of HIV-1 immunopathogenesis. *Clin Immunol* 2008; 126:235-42.

- [101] Boasso A, Vaccari M, Hryniewicz A, et al. Regulatory T-cell markers, indoleamine 2,3-dioxygenase, and virus levels in spleen and gut during progressive simian immunodeficiency virus infection. *J Virol* 2007; 81:11593-603.
- [102] Chen W, Liang X, Peterson AJ, Munn DH, Blazar BR. The indoleamine 2,3-dioxygenase pathway is essential for human plasmacytoid dendritic cell-induced adaptive T regulatory cell generation. *J Immunol* 2008; 181:5396-404.
- [103] Gerosa F, Baldani-Guerra B, Nisii C, Marchesini V, Carra G, Trinchieri G. Reciprocal activating interaction between natural killer cells and dendritic cells. *J Exp Med* 2002; 195:327-33.
- [104] Megjugorac NJ, Young HA, Amrute SB, Olshalsky SL, Fitzgerald-Bocarsly P. Virally stimulated plasmacytoid dendritic cells produce chemokines and induce migration of T and NK cells. *J Leukoc Biol* 2004; 75:504-14.
- [105] Portales P, Reynes J, Rouzier-Panis R, Baillat V, Clot J, Corbeau P. Perforin expression in T cells and virological response to PEG-interferon alpha2b in HIV-1 infection. *AIDS* 2003; 17:505-11.
- [106] Portales P, Reynes J, Pinet V, et al. Interferon-alpha restores HIV-induced alteration of natural killer cell perforin expression in vivo. *AIDS* 2003; 17:495-504.
- [107] Ferlazzo G, Tsang ML, Moretta L, Melioli G, Steinman RM, Munz C. Human dendritic cells activate resting natural killer (NK) cells and are recognized via the NKp30 receptor by activated NK cells. *J Exp Med* 2002; 195:343-51.
- [108] Ferlazzo G, Munz C. NK cell compartments and their activation by dendritic cells. *J Immunol* 2004; 172:1333-9.
- [109] Herbeuval JP, Shearer GM. HIV-1 immunopathogenesis: how good interferon turns bad. *Clin Immunol* 2007; 123:121-8.
- [110] Barron MA, Blyveis N, Palmer BE, MaWhinney S, Wilson CC. Influence of plasma viremia on defects in number and immunophenotype of blood dendritic cell subsets in human immunodeficiency virus 1-infected individuals. *J Infect Dis* 2003; 187:26-37.
- [111] Almeida M, Cordero M, Almeida J, Orfao A. Different subsets of peripheral blood dendritic cells show distinct phenotypic and functional abnormalities in HIV-1 infection. *AIDS* 2005; 19:261-71.
- [112] Killian MS, Fujimura SH, Hecht FM, Levy JA. Similar changes in plasmacytoid dendritic cell and CD4 T-cell counts during primary HIV-1 infection and treatment. *AIDS* 2006; 20:1247-52.
- [113] Nilsson J, Boasso A, Velilla PA, et al. HIV-1-driven regulatory T-cell accumulation in lymphoid tissues is associated with disease progression in HIV/AIDS. *Blood* 2006; 108:3808-17.

- [114] Mandl JN, Barry AP, Vanderford TH, et al. Divergent TLR7 and TLR9 signaling and type I interferon production distinguish pathogenic and nonpathogenic AIDS virus infections. *Nat Med* 2008; 14:1077-87.
- [115] Campillo-Gimenez L, Laforge M, Fay M, et al. Nonpathogenesis of simian immunodeficiency virus infection is associated with reduced inflammation and recruitment of plasmacytoid dendritic cells to lymph nodes, not to lack of an interferon type I response, during the acute phase. *J Virol* 2010; 84:1838-46.
- [116] Cavaleiro R, Baptista AP, Foxall RB, Victorino RM, Sousa AE. Dendritic cell differentiation and maturation in the presence of HIV type 2 envelope. *AIDS Res Hum Retroviruses* 2009; 25:425-31.
- [117] Barratt-Boyes SM, Wijewardana V. A divergent myeloid dendritic cell response at virus set-point predicts disease outcome in SIV-infected rhesus macaques. *J Med Primatol* 2011; 40:206-13.
- [118] Sallusto F, Schaerli P, Loetscher P, et al. Rapid and coordinated switch in chemokine receptor expression during dendritic cell maturation. *Eur J Immunol* 1998; 28:2760-9.
- [119] Patterson BK, McCallister S, Schutz M, et al. Persistence of intracellular HIV-1 mRNA correlates with HIV-1-specific immune responses in infected subjects on stable HAART. *AIDS* 2001; 15:1635-41.
- [120] Fong L, Mengozzi M, Abbey NW, Herndier BG, Engleman EG. Productive infection of plasmacytoid dendritic cells with human immunodeficiency virus type 1 is triggered by CD40 ligation. *J Virol* 2002; 76:11033-41.
- [121] Lore K, Smed-Sorensen A, Vasudevan J, Mascola JR, Koup RA. Myeloid and plasmacytoid dendritic cells transfer HIV-1 preferentially to antigen-specific CD4+ T cells. *J Exp Med* 2005; 201:2023-33.
- [122] Meyers JH, Justement JS, Hallahan CW, et al. Impact of HIV on cell survival and antiviral activity of plasmacytoid dendritic cells. *PLoS One* 2007; 2:e458.
- [123] Brown KN, Wijewardana V, Liu X, Barratt-Boyes SM. Rapid influx and death of plasmacytoid dendritic cells in lymph nodes mediate depletion in acute simian immunodeficiency virus infection. *PLoS Pathog* 2009; 5:e1000413.
- [124] Dillon SM, Robertson KB, Pan SC, et al. Plasmacytoid and myeloid dendritic cells with a partial activation phenotype accumulate in lymphoid tissue during asymptomatic chronic HIV-1 infection. *J Acquir Immune Defic Syndr* 2008; 48:1-12.
- [125] Manches O, Munn D, Fallahi A, et al. HIV-activated human plasmacytoid DCs induce Tregs through an indoleamine 2,3-dioxygenase-dependent mechanism. *J Clin Invest* 2008; 118:3431-9.
- [126] Favre D, Lederer S, Kanwar B, et al. Critical loss of the balance between Th17 and T regulatory cell populations in pathogenic SIV infection. *PLoS Pathog* 2009; 5:e1000295.



- [127] Steinman RM, Banchereau J. Taking dendritic cells into medicine. *Nature* 2007; 449:419-26.
- [128] Steinman RM. Dendritic cells in vivo: a key target for a new vaccine science. *Immunity* 2008; 29:319-24.
- [129] Ueno H, Schmitt N, Klechevsky E, et al. Harnessing human dendritic cell subsets for medicine. *Immunol Rev* 2010; 234:199-212.
- [130] Andrieu JM, Lu W. A dendritic cell-based vaccine for treating HIV infection: background and preliminary results. *J Intern Med* 2007; 261:123-31.
- [131] McElrath MJ, Haynes BF. Induction of immunity to human immunodeficiency virus type-1 by vaccination. *Immunity* 2010; 33:542-54.
- [132] Picker LJ, Hansen SG, Lifson JD. New paradigms for HIV/AIDS vaccine development. *Annu Rev Med* 2012; 63:95-111.
- [133] Buchbinder SP, Mehrotra DV, Duerr A, et al. Efficacy assessment of a cell-mediated immunity HIV-1 vaccine (the Step Study): a double-blind, randomised, placebo-controlled, test-of-concept trial. *Lancet* 2008; 372:1881-93.
- [134] McElrath MJ, De Rosa SC, Moodie Z, et al. HIV-1 vaccine-induced immunity in the test-of-concept Step Study: a case-cohort analysis. *Lancet* 2008; 372:1894-905.
- [135] Flynn NM, Forthal DN, Harro CD, Judson FN, Mayer KH, Para MF. Placebo-controlled phase 3 trial of a recombinant glycoprotein 120 vaccine to prevent HIV-1 infection. *J Infect Dis* 2005; 191:654-65.
- [136] Pitisuttithum P, Gilbert P, Gurwith M, et al. Randomized, double-blind, placebo-controlled efficacy trial of a bivalent recombinant glycoprotein 120 HIV-1 vaccine among injection drug users in Bangkok, Thailand. *J Infect Dis* 2006; 194:1661-71.
- [137] Rerks-Ngarm S, Pitisuttithum P, Nitayaphan S, et al. Vaccination with ALVAC and AIDSVAX to prevent HIV-1 infection in Thailand. *N Engl J Med* 2009; 361:2209-20.
- [138] McElrath MJ. Immune responses to HIV vaccines and potential impact on control of acute HIV-1 infection. *J Infect Dis* 2010; 202 Suppl 2:S323-6.
- [139] Carrington M, O'Brien SJ. The influence of HLA genotype on AIDS. *Annu Rev Med* 2003; 54:535-51.
- [140] Goulder PJ, Watkins DI. Impact of MHC class I diversity on immune control of immunodeficiency virus replication. *Nat Rev Immunol* 2008; 8:619-30.
- [141] Streeck H, Jolin JS, Qi Y, et al. Human immunodeficiency virus type 1-specific CD8+ T-cell responses during primary infection are major determinants of the viral set point and loss of CD4+ T cells. *J Virol* 2009; 83:7641-8.
- [142] Lu W, Achour A, Arlie M, Cao L, Andrieu JM. Enhanced dendritic cell-driven proliferation and anti-HIV activity of CD8(+) T cells by a new phenothiazine derivative, aminoperazine. *J Immunol* 2001; 167:2929-35.

- [143] Lu W, Wu X, Lu Y, Guo W, Andrieu JM. Therapeutic dendritic-cell vaccine for simian AIDS. *Nat Med* 2003; 9:27-32.
- [144] Lu W, Arraes LC, Ferreira WT, Andrieu JM. Therapeutic dendritic-cell vaccine for chronic HIV-1 infection. *Nat Med* 2004; 10:1359-65.
- [145] Ratzinger G, Baggers J, de Cos MA, et al. Mature human Langerhans cells derived from CD34<sup>+</sup> hematopoietic progenitors stimulate greater cytolytic T lymphocyte activity in the absence of bioactive IL-12p70, by either single peptide presentation or cross-priming, than do dermal-interstitial or monocyte-derived dendritic cells. *J Immunol* 2004; 173:2780-91.

