

# We are IntechOpen, the world's leading publisher of Open Access books Built by scientists, for scientists

6,900

Open access books available

186,000

International authors and editors

200M

Downloads

Our authors are among the

154

Countries delivered to

TOP 1%

most cited scientists

12.2%

Contributors from top 500 universities



WEB OF SCIENCE™

Selection of our books indexed in the Book Citation Index  
in Web of Science™ Core Collection (BKCI)

Interested in publishing with us?  
Contact [book.department@intechopen.com](mailto:book.department@intechopen.com)

Numbers displayed above are based on latest data collected.  
For more information visit [www.intechopen.com](http://www.intechopen.com)



---

# **Wind Speed Regionalization Under Climate Change Conditions**

---

Masoomeh Fakhry, Mohammad Reza Farzaneh,  
Saeid Eslamian and Rouzbeh Nazari

Additional information is available at the end of the chapter

<http://dx.doi.org/10.5772/55985>

---

## **1. Introduction**

Green energy and renewable energy are one of the most essential fundamentals for future developments of countries all over the world. Running out of fossil fuels in near future, makes the use of renewable energies almost inevitable. Evaluation of the capability of using these types of energies is an essential issue at present. Extreme dependency of mankind to the limited energy resources is both dangers and unsustainable and finding a way out is one of the most important challenges that we face. Achieving some unlimited energy sources has been human's dream. Daily increase of energy demands and limitation of fossil energy resources from one side, and increase of environmental pollutants caused by using these resources in the other side, has made application of renewable energies more essential and widespread. The wind, as one of the climatological factors has a wide effects on agriculture, transport, pollution, energy, manufacturing and industrial plans. Wind power is one of the first energy sources discovered by humans. It is applied for different purposes such as power source for ship movement, irrigation and milling in some countries such as Iran and China. However, construction of wind power plants would make this type of energy more applicable. Nowadays, coal, oil and gas are the main resources to provide energy. In recent years, an increasing trend in price of the mentioned materials has become vivid due to the globalization and political events and mostly because of water crises. These increasing prices make us to find an appropriate solution to decrease the expenses and increasing the stability. Furthermore, renewable energies are considered as available, exchangeable and inexhaustible resources. New energies are available until these resources exist. Wind energy is used in two ways, first in direct way in which the wind is applied for drying and ventilation, and secondly, the wind is utilized indirectly for milling the grains, to pump water to the fields and to generate

electricity. The evidence shows that in some countries such as Iran, Iraq, Egypt, China, Italy, Spain, the wind energy has been used for milling and irrigation. According to IPCC special report on renewable energy sources and decreasing the climate change damages, there is an increasing trend in the magnitude of the wind power plants from 17 meters high and 75 kilowatts in 1980 decade to 80 meters high and 1800 kilowatts in 2005-2010. It is predicted that the size of these generators should be 250 meters high and 20000 kilowatts in future years which is clarifying the increasing trend of application of this green energy. An important challenge in front of this kind of power plants is the uncertainty in accessible capacity of electrical power. This problem has been caused by random nature of effective factors such as random variation in mechanical forces generating wind power. In other words, due to the continuous variations in meteorological and climatological conditions, the wind speed, duration, density and power are randomly changing. Thus, for using its power, it is necessary to study the windy conditions in the area and statistical data reported by meteorology centers. However, the analysis of such large amount of data recorded in meteorology centers to estimate the mechanical power input of wind power plants is not possible except using some applied methods. Obviously, the study of the behavior and speed of winds will lead to more accurate estimation of accessible capacity in wind power plants. Moreover, spatial analysis of this climatological phenomenon will provide some essential knowledge about the areas with potential capacity of constructing wind power plants. The frequency analysis is an operative tool in assessing this aim. This study is going to describe these materials and their effects on regionalization of wind speed under effect of climate change.

2. Previous investigations on wind prediction

There are some studies reported in the literature about wind speed in future periods which some of them are summarized in Table 1.

Results	Paper Type	Location	Scenarios	Model	References
Historical wind time series for future application					Harmsen et al. (2009)
Historical wind time series for future application					Doria et al. (2006)
Wind speed change is stronger than the changes obtained for the same region on daily precipitation and temperature	Case Study	Nebraska	2 scenarios	MPI	Bogardi and Matyasovszky (1996)
Dynamical Downscaling	Case study	German	2 scenarios	ECHAM	Hoyme and Zieleke (2001)
The GCM models of climate change become more reliable and as tools are refined for improving results at regional scales, it will be desirable to	Case study	USA	2 scenarios	HADCM2, CGCM1	Breslow and Sailor (2002)

Results	Paper Type	Location	Scenarios	Model	References
include improved estimates of vulnerabilities in the wind power site selection decision process.					
-ANN and statistical downscaling -A2 is preferred to A1b changes in daily mean wind speeds at each location and they are presented and discussed with respect to potential implications for wind power generation.	Case study	USA	A1b, A2	4 GCM	Sailor et al. (2000)
-Impact of the climate change scenarios on wind power may be as high as a 40% reduction in summer time generation potential.	Case study	Texas and California	2 scenarios	CCM	
In order to create the scenarios of changes in power density under climate change, a method is developed for mapping the daily-resolution downscaled GCM output to the hourly level. The model results for either of the SRES scenarios were similar. In most cases, the impacts of the A2 scenario were slightly larger than those for the A1B scenario, but these inter-scenario differences were smaller than the inter-model differences, even after downscaling.					Sailor et al. (2008)
-The average of wind speed will increase significantly towards the end of this century under the changing climate impacts.	Case study	Finland	A2	HWIND and SIMA	Peltola et al. (2010)
- Use of NCEP and ANN for downscaling. - For the two locations considered, the increase in the 100-year wind was found to be varying from 44% to 74%.	Case study	Indian	A2	CGCM3	Deepthi and Deo (2010)
-By the end of the twenty-first century, there is an evidence for small magnitude changes in the wind resource and increases in extreme wind speeds, and the declines in sea ice and icing frequencies.	Review Paper				Pryor and Barthelmie (2010)
					-Some changes associated with climate evolution will likely benefit the wind energy industry while other changes may negatively have an impact on wind energy developments, with such 'gains and losses' depending on the region under consideration. - Gumbel is presented for the probability distribution of extreme wind speeds
15 – 30 % wind speed growth	Case study	Brazil	A1B	HADCM3	Pereira et al. (2012)

**Table 1.** Wind speed investigations in future period

### 3. Climate change impacts

Fast development of industries and its outcome as increasing of the emission of greenhouse gases, has led to destruction of climatic equilibrium of the earth. This phenomenon is called "Climate Change" (IPCC 2007, Leander et al. 2006). The research is indicating the negative impacts of this phenomenon on different systems such as water resources, agriculture, environment, health, industry, and economy. The importance and hazardous of climate change has been emphasized in different international communities such as the group of eight (G8) which is a forum for the governments of eight of the world's largest economies and some of its facing solutions to save water resources, agriculture, and environmental resources have been suggested. As the water is an important resource, which is extremely under effect of climate change, the analysis of its changes in future years can provide a very useful key for future droughts, floods, evapotranspiration and etc.

The first step in the study of climate change impacts on future resources is to simulate the behavior of climatological factors under the effect of greenhouse gases. A general circulation model (GCM) is a three dimensional mathematical models of the general circulation of a planetary atmosphere or ocean. Atmospheric and oceanic GCMs (AGCM and OGCM) are key components of global climate models, which are systems of differential equations. Using such models, scientists divide the atmosphere, hydrosphere, geosphere, cryosphere, and biosphere of the planet into a 3-dimensional grid, apply the basic equations, and evaluate the results. Atmospheric models calculate winds, heat transfer, radiation, relative humidity, and surface hydrology within each grid and evaluate the interactions with neighboring points. Different greenhouse gases emission scenarios such as A1, B1, A2, and B2 are going to be used during the simulation process.

### 4. Generation of climatic scenarios

The aforementioned 3-dimensional joint atmospheric-oceanic general circulation models (AOGCM) are used in this study among different available methods for the generation of climatic scenarios. The GCM models have a physical basis presented by mathematical relations. They are going to be solved in a 3-dimensional grid all over the planet. In order to simulate the climate of the planet, the fundamental climatic processes in the atmosphere, hydrosphere, geosphere, cryosphere, and biosphere will be simulated in separate secondary models. Then, these atmospheric and oceanic secondary models are joining together to form AOGCMs. To study the condition of climate in the past periods, the observed values of greenhouse gases, solar radiation changes, and volcanic eruption aerosols until the 2000 are entered as input to the GCM models and the climatic variables are simulated as time series. After simulation of these variables in the past periods by using the GCM models, the introduction of future greenhouse gas conditions is necessary for simulation of these variables in future periods. For this purpose, at first the amounts of emitted greenhouse gases presented by emission scenarios (which are always until 2100) are transformed to concentrate and then

to the amount of solar radiation and these values would be the input of the GCM models. The results obtained from the GCM models under emission scenarios will form the time series of climatic variables up to 2100.

## 5. Downscaling

One of the main challenges using the output of the AOGCM models is the spatial scale of their calculation cell and the downscaling method is used to solve this challenge. These methods are generally consists of two main groups of dynamic and statistical ones. In these methods, the downscaling procedure is done by using the observed meteorological data. A considerable point in application of the final outputs is the different sources of uncertainty, which can be evaluated using the Bootstrap method (Efron, 1993) in each confidence level.

## 6. Frequency analysis

The magnitude of an extreme event has an inverse relation with its frequency. In other words, the higher magnitude is the event, the less is its frequency of occurrence. The primary objective of frequency analysis is to relate the magnitude of extreme events to their frequency of occurrence through application of probability distributions (Chow et al., 1988). The first assumption in this manner is that under study data are independent and identically distributed and their underlying system is random and is spatially and temporally independent. This would be available when there is no correlation between observations. In application, these conditions can be achieved by using annual maximum values noting the independency of events between years. However, the wind speed parameter has been rarely examined by this method among other meteorological parameters; therefore, the studies in this field are at the beginning.

## 7. Probability distribution function and frequency formula

To describe the probability distribution of a random variable  $X$ , a cumulative distribution function (CDF) is used. The value of this function  $F(x)$  is simply the probability  $P$  of the event that the random variable takes on value equal to or less than the argument:

$$F(x) = P[X \leq x] \quad (1)$$

This is the probability of the random variable  $X$ , it will not exceed  $x$  and is shown by the non-exceedance probability  $F(x)$ .

The occurrence of extreme events is not according to a constant regime or with a fixed magnitude and the time interval between two such events is variable. Thus, the return period defined as the average inter-arrival time between two extreme events is an applicable tool in

such cases. An extreme event  $x_T$  with return period  $T$  can occur more than one time in a year and its exceedance probability can be expressed by:

$$P[X > x_T] = \frac{1}{T} \quad (2)$$

Thus, the above mentioned non-exceedance probability can be presented as follows:

$$F(x_T) = P[X \leq x_T] = 1 - P[X > x_T] = 1 - \frac{1}{T} \quad (3)$$

Equation (3) is presenting the magnitude of an extreme event correspond to a return period  $T$ . For a preselected value of return period and corresponding non-exceedance probability ( $p = 1 - \frac{1}{T}$ ), it is possible to determine the quantile  $x_p$  using the inverse function of  $F$ :

$$x_p = F^{-1}(p) = F^{-1}\left(1 - \frac{1}{T}\right) \quad (4)$$

which gives the value of  $x_p$  corresponding to any particular value of  $p$  or  $T$ .

## 8. Selection of probability distribution

The probability distribution is a function for describing the probability of occurrence of a random event. Large amount of statistical information will be summarized in the distribution and its parameters by fitting a probability distribution on a set of hydrologic data. The most important and widely used methods for estimation of distribution parameters from data samples are method of moments, linear moments, and maximum likelihood which will be described more in next paragraph.

## 9. Method of moments

The method of moments was first introduced by Pearson (1902). He found that the appropriate estimations of the parameters of a probability distribution are those which their moments match with corresponding sample moments in the best way. In this method, general formula for calculation of moments of order  $r$  of the distribution  $f(x)$  around the mean is:

$$\mu^r = \int_{-\infty}^{\infty} x^r f(x) dx \quad (5)$$

The method of moments is describing the relation between moments and distribution parameters. The most important moments around the mean are the mean, variance, skewness, and kurtosis, which are the one to four order moments, respectively.



## 10. Maximum likelihood method

Maximum-likelihood estimation was recommended, analyzed and vastly popularized by R. A. Fisher between 1912 and 1922 (Aldrich, John 1997). He argued that the best value of a parameter of a probability distribution should be one, which maximizes the likelihood or joint probability of occurrence of the sample. Assume that the sample space is divided into parts with length  $dx$  and  $x_i$  is selected from independent and identically distributed observations  $x_1, x_2, \dots, x_n$ . The probability density for  $x_i$  can be denoted by  $f(x_i)$ . The probability that a random event occur in a distance consisting  $x_i$  would be equal to  $f(x_i) dx$ . As the samples are independent, the joint density function for all observations can be calculated by:

$$f(x_1) dx \cdot f(x_1) dx \dots f(x_n) dx = \left( \prod_{i=1}^n f(x_i) \right) (dx)^n \quad (6)$$

As the distance  $dx$  is constant, the maximization of above joint density function is equivalent to maximization of likelihood function defined as:

$$L(x_1, x_2, \dots, x_n) = f(x_1, x_2, \dots, x_n) = \prod_{i=1}^n f(x_i) \quad (7)$$

The maximum likelihood method is theoretically the most accurate method in estimation of the parameters of probability distributions. In fact, it is estimating those parameters with minimum average error with respect to correct parameters.

## 11. L-moments method

Probability weighted moments (PWMs) are defined by Greenwood et al. (1979) as

$$\beta_r = E(x \{F(x)\}^r) \quad (8)$$

Which can be rewritten as:

$$\beta_r = \int_0^1 x(F) F^r dF, \quad r=0, 1, \dots, s \quad (9)$$

Where  $F=F(x)$  is CDF of  $x$  and  $x(F)$  is its inverse. In the case of  $r=0$ ,  $\beta_r$  is equal to the mean of the distribution  $\mu=E(x)$ . PWMs are precursors of L-moments and developed more by the works of Hosking (1986, 1990) and Hosking and Wallis (1991, 1993, 1997). Hosking defined L-moments as:

$$\lambda_{r+1} = \sum_{k=0}^r \beta_r (-1)^{r-k} \binom{r}{k} \binom{r+k}{k} \quad (10)$$



The first four order L-moments can be calculated as bellow:

$$\lambda_1 = \beta_0 \quad (11)$$

$$\lambda_2 = 2\beta_1 - \beta_0 \quad (12)$$

$$\lambda_3 = 6\beta_2 - 6\beta_1 + \beta_0 \quad (13)$$

$$\lambda_4 = 20\beta_3 - 30\beta_2 + 12\beta_1 - \beta_0 \quad (14)$$

L-moment ratios, which are analogous to conventional moment ratios, are defined by Hosking (1990) as:

$$\tau = \lambda_2 / \lambda_1 \quad (15)$$

$$\tau_r = \lambda_r / \lambda_2, \quad r \geq 3 \quad (16)$$

where  $\lambda_1$  is a measure of location,  $\tau$  is a measure of scale and dispersion (L-CV),  $\tau_3$  is a measure of skewness (L-skew), and  $\tau_4$  is a measure of kurtosis (L-kurt.). Analogous to conventional (product) moments, the L-moments of order one to four characterize location, scale, skewness and kurtosis, respectively (Karvanen, 2006). In order to estimate the distribution parameters in the method of L-moments, similar to other methods, sample L-moment ratios are calculated by replacing distribution L-moments  $\lambda_r$  by their sample estimates.

However, L-moments have significant advantages over PWM's, specially their ability to summarize a statistical distribution in a more meaningful way. Since L-moment estimators are linear functions of the ordered data values, they are virtually unbiased and less influenced by outliers. Also they have relatively small sampling variance and the bias of their small sample estimates remains quite small. L-moments have become popular tools for solving various problems related to parameter estimation, distribution identification, and regionalization in different fields such as hydrology, water resources, and especially in regional analysis of rainfall and floods.

## 12. At-station goodness of fit tests

After estimation of the parameter of the prescribed distributions, the usual question is the selection of the best fitted distribution to the observation sample. For this aim, the goodness-of-fit tests are used to compare fitted theoretical distributions and observations. Two very common goodness-of-fit tests with wide application in the literature are Chi-square and Kolmogorov-Smirnov tests. Another extensively used test is root mean square error (RMSE) which estimates the root of the square differences between observed values and calculated

ones divided by the sample size. Among theoretical probability distributions, some of them are selected by researchers for describing wind speed, which are presented in Table 2.

Year	Distribution function	Scientists
1940 to 1945	Pearson Type III	Putnum*
1951	Pearson Type III	Sherlock*
1950 to 1970	Bivariate Distributions of Two Components	Essenwanger*
	Two-Parameter Normal	Crutcher and Bear*
1970s	Isotropic Gaussian Model of McWilliams et al.	Justus and Koepl*
1974, 1976, 1977	Three-Parameter Log-normal	Luna and Church* Kaminsky, Justus et al.
1976 to 1977	Square-root Normal Model	Winger*
1978	Three-parameter Weibull	Stewart and Essenvanger*
1980	Three-Parameter Generalized Gamma	Auwers*
1980	Inverse Gaussian	Bardsley*
1983	Pearson Type I (Beta)	Lavagnini et al.*
1994	Weibull	Stelios Pasardes*
1996	Log-Normal	Bogardi and Matyasovski
2009	Beta	Carta et al.
2009	Two-Component Weibull	Akdog et al.*
2010	Gumbel and Weibull	Deepthi and Deo

\*by Carta et al. 2009

**Table 2.** Probability distribution function of wind speed in the literature

### 13. Regional frequency analysis

One of the main problems in frequency analysis is the lack of adequate long time data in locations under study, which beside insufficient accuracy in data recording in at-site estimates, has caused regional frequency analysis to be more applicable in such studies. Steps of regional frequency analysis are presented below.

### 14. Discordancy test

For the screening of similar sites, the discordancy measure, in terms of the sample L-moment ratios (L-CV, L-skew, and L-kurt.) of the gauging sites' observed data is suggested by Hosking

and Wallis (1997). The aim of the data screening performed using L-moments based on a discordancy measure  $D_i$  is to identify data that are grossly discordant with the group as a whole for the regional flood frequency analysis. Hosking and Wallis (1997) defined the discordancy measure ( $D_i$ ) considering that there are  $N$  sites in the sample. Let  $u_i = (t_1^{(i)}, t_2^{(i)}, t_3^{(i)})$  be a vector containing the sample L-moment ratios for site  $i$  ( $i=1, 2, \dots, N$ ) (Hosking and Wallis, 1993, 1997). The classical discordancy measure for any gauging site  $i$  is calculated as follows (Hosking and Wallis 1997):

$$D_i = \frac{1}{3} \left( u_i - \bar{u} \right)^T S^{-1} \left( u_i - \bar{u} \right) \quad (17)$$

$$\bar{u} = \frac{1}{N} \sum_{i=1}^N u_i \quad (18)$$

$$S = \frac{1}{N-1} \sum_{i=1}^N \left( u_i - \bar{u} \right) \left( u_i - \bar{u} \right)^T \quad (19)$$

Where  $N$  is the number of stations,  $u_i$  is the vector of L-moments,  $\bar{u}$  and  $S$  are the sample mean and covariance matrix respectively, and  $T$  denotes the transposition of a vector or matrix. Large values of  $D_i$  indicate the sites that are the most discordant from the group as a whole and are the most suitable for investigating the existence of data errors (Hosking and Wallis 1993). Generally, if a site's  $D$  statistic exceeds three when the number of sites in one region is greater than 15, its data are considered to be discordant from the rest of the regional data (Hosking and Wallis 1997). Large values of  $D_i$  indicate that cautious investigation of the  $i^{\text{th}}$  site should be carried out to detect the presence of data errors.

## 15. Heterogeneity test

L-moment heterogeneity tests allow assessing whether a group of sites may reasonably be treated as a homogeneous region. The heterogeneity measure compares the between-site variations in sample L-moments for a group of sites with what would be expected for a homogeneous region (Hosking and Wallis, 1993).

The homogeneity test used in this study is the test that is proposed by Hosking and Wallis (1993) and is based on various orders of sample L-moment ratios. It is particularly based on the variability of three different levels of tests: a test based on the L-CV only; a test based on the L-CV and L-skew; and a test based on the L-skew and L-kurt. These tests are called the V-statistics and are respectively defined as:

$$V_1 = \left\{ \sum_{i=1}^N n_i (\tau^{(i)} - \tau^R)^2 \middle/ \sum_{i=1}^N n_i \right\}^{0.5} \quad (20)$$

$$V_2 = \sum_{i=1}^N n_i \left\{ (\tau^{(i)} - \tau^R)^2 + (\tau_3^{(i)} - \tau_3^R)^2 \right\}^{0.5} \middle/ \sum_{i=1}^N n_i \quad (21)$$

$$V_3 = \sum_{i=1}^N n_i \left\{ (\tau_3^{(i)} - \tau_3^R)^2 + (\tau_4^{(i)} - \tau_4^R)^2 \right\}^{0.5} \middle/ \sum_{i=1}^N n_i \quad (22)$$

The heterogeneity measure is then defined as:

$$H = \frac{(V_i - \mu_{V_i})}{\sigma_{V_i}} \quad ; \quad i=1, 2, 3 \quad (23)$$

where  $\mu_{V_i}$  and  $\sigma_{V_i}$  are the mean and the standard deviation of the simulated value of the  $V$ , respectively. The regional averages L-moment ratios are determined by following equations:

$$\tau^R = \sum_{i=1}^N n_i \tau^{(i)} \middle/ \sum_{i=1}^N n_i \quad (24)$$

$$\tau_3^R = \sum_{i=1}^N n_i \tau_3^{(i)} \middle/ \sum_{i=1}^N n_i \quad (25)$$

$$\tau_4^R = \sum_{i=1}^N n_i \tau_4^{(i)} \middle/ \sum_{i=1}^N n_i \quad (26)$$

where  $N$  is the number of sites,  $n_i$  is the record length at site  $i$ , and  $\tau^{(i)}$ ,  $\tau_3^{(i)}$ , and  $\tau_4^{(i)}$  are the sample L-moment ratios at site  $i$ . After fitting a Kappa distribution to the regional average L-moment ratios, a large number of realizations  $N_{sim}$  of a region with  $N$  sites, each having the Kappa distribution is simulated. The simulated regions are homogenous and have no cross-correlation or serial correlation.

Declare the region to be heterogeneous if  $H$  is sufficiently large. Hosking and Wallis (1993) suggested that the region be regarded as “acceptably homogeneous” if  $H < 1$ , “possibly heterogeneous” if  $1 \leq H < 2$ , and “definitely heterogeneous” if  $H \geq 2$ .

In order to achieve reliable estimates  $\mu_V$  and  $\sigma_V$ , Hosking and Wallis (1993) recognized that the value of  $N_{sim} = 500$  should usually be adequate. Furthermore, they judged that larger values may need to resolve  $H$  values very close to 1 or 2.

Hosking and Wallis (1993) revealed that  $H$  statistics based on  $V_2$  and  $V_3$  lacks a power to distinguish between homogeneous and heterogeneous regions and the  $H$  statistics based on  $V_1$  has much better discriminatory power and thus, it is suggested as heterogeneity measure.

## 16. Estimation of the parameters of regional frequency distribution

Four first orders L-moments for each site inside a homogeneous region is making dimensionless by dividing them by the average of the data. Weighted values of dimensionless L-moments are used to calculate standardized regional L-moments.

$$\lambda_r^R = \frac{\sum_{i=1}^N n_i \lambda_r^{(i)}}{\sum_{i=1}^N n_i} \quad (27)$$

where  $\lambda_r^R$  is the regional standardized L-moment of order  $r$ ,  $\lambda_r^{(i)}$  is the standardized L-moment of order  $r$  in site  $i$ ,  $n_i$  is the number of years in site  $i$ , and  $N$  is the number of sites in the homogenous region. The parameters of best fitted distribution are estimated using the relation between distribution parameters and L-moments presented by Hosking (1989). Then the quantile values corresponding to different return periods are estimated for under study variable as regional quantile. The quantiles for the sites in each sub-region are determined by multiplying the regional quantile with the site's mean. At any site, the  $i^{\text{th}}$  quantiles for the subregions are calculated using Eq. (34)

$$Q_i(F) = \lambda_1^{(i)} q(F) \quad (28)$$

Where  $Q(F)$  and  $q(F)$  are the at-site  $i$  and regional quantiles with non-exceedance probability, respectively.

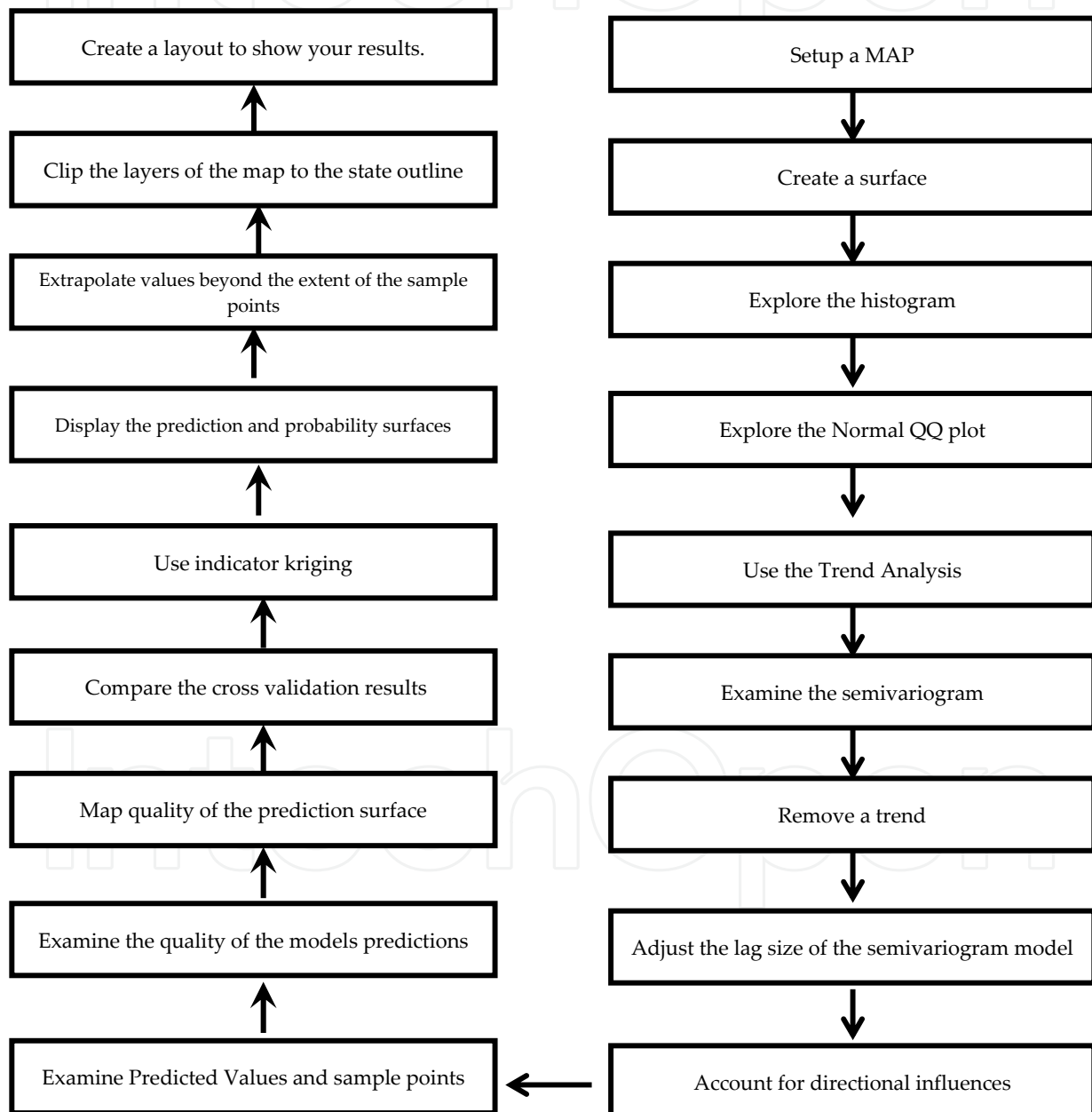
## 17. Spatial interpolation

In classic statistics, the samples derived from a population are usually considered as random sets and the recorded value of a particular variable in an individual sample cannot present any details about the value of that variable in another sample with specific distance. In geostatistics, it is possible to link the values of one variable in a population and distance and direction of samples relating to each other. Furthermore, in classic statistics, it is assuming that the variables are randomly changing, while in geostatistics, some parts of the variable is random and some other parts have structure and is a function of distance and direction. Thus, using geostatistics, first the existence or the absence of a spatial structure between data is considered and then, in presence of a spatial structure, the data will be analyzed. It is possible to adjacent data to be spatially dependent together in a certain distance. In such cases, as in the presence of spatial structure, the variations in a certain space have more chances to be effective on near spaces with regard to more far ones, it is clear that variables are maybe more similar in closer samples.

Geostatistics is a field of statistics with the base of "local variables theory". Any variable distributed in 3d space with spatial dependence is called local variable and can be studied and

analyzed in geostatistical studies. Some method of geostatistical studies are Inverse Distance Weighting (IDW), Global Polynomial (GP), Local Polynomial (LP), Radial Basis Functions (RBF), Kriging (Simple, Ordinary, Universal, Disjunctive and CoKriging).

Applying these methods needs to parallel application of spatial and statistical analysis, which is possible only in some environments like ArcMap. To visualize the above process, the steps are summarized as follows in Figure 1.



**Figure 1.** Spatial interpolation steps

18. Comparison of different methods

In above sections, all methods are separately presented but their comparison is very important to choose the most appropriate method for analysis. However, a wrong selection in this step will lead to large amount of uncertainty in output results.

Model	Type	Output Surfaces	Speed	Exact Interpolation	Flexibility	Advantage	Disadvantages	Assumptions
IDW	Deterministic	Prediction	Fast	Yes	Little flexibility, few parameter decision	Few decisions	NO assessment of prediction errors, bull's-eyes around data location	None
GP	Deterministic	Prediction	Fast	No	Little flexibility, few parameter decision	Few decisions	NO assessment of prediction errors, may be too smooth, edge points have large influence	None
LP	Deterministic	Prediction	Fairly fast	No	Some flexibility, more parameter decision	Flexible	NO assessment of prediction errors, may be hard to choose a good local neighborhood	None
RBF	Deterministic	Prediction	Fairly fast	Yes	Flexibility, more parameter decision	Flexible	NO assessment of prediction errors, may be too automatic	None
Kriging	Stochastic	Prediction, Standard Error, Probability, Quintile	Fairly fast	Yes without measurement error, No with measurement error	Very flexibility, assess spatial autocorrelation, obtain standard errors, many decisions more parameter decision	Flexible with modeling tools; prediction standard errors	Many decision on transformations trends, models, parameters, and neighborhoods	Stationary, some methods require a normal data distribution
Cokriging	Stochastic	Prediction, Standard Error, Probability, Quintile	Fairly fast	Yes without measurement error, No with measurement error	Very flexibility, assess spatial autocorrelation, obtain standard errors, very many decisions	Flexible with modeling tools; prediction standard errors	Many decision on transformations trends, models, parameters, and neighborhoods	Stationary, some methods require a normal data distribution

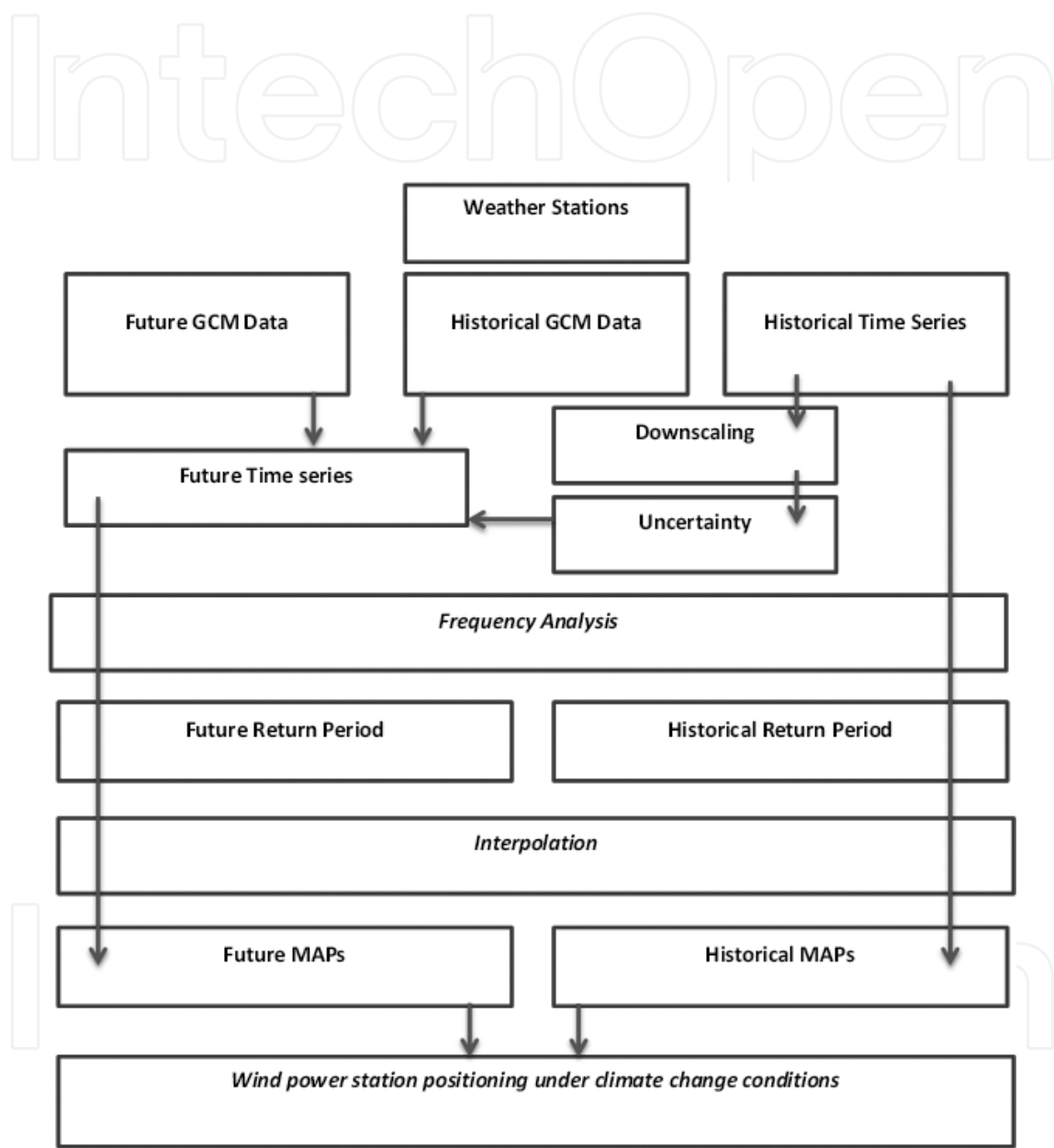
\*by compus.esri.com

Table 3. Summarized properties of the interpolators



19. A case study

To make the above discussions more clear, a case study including all steps needed for assessment of climate change effects on positioning of wind power plant station is briefly presented. Figure 2 shows these steps applied in the assessment.



**Figure 2.** Methodology of wind power positioning under climate change conditions

For this purpose, a region in Southern Khorasan, Iran is chosen. Five synoptic stations are considered as reference stations as displayed in Figure 3.

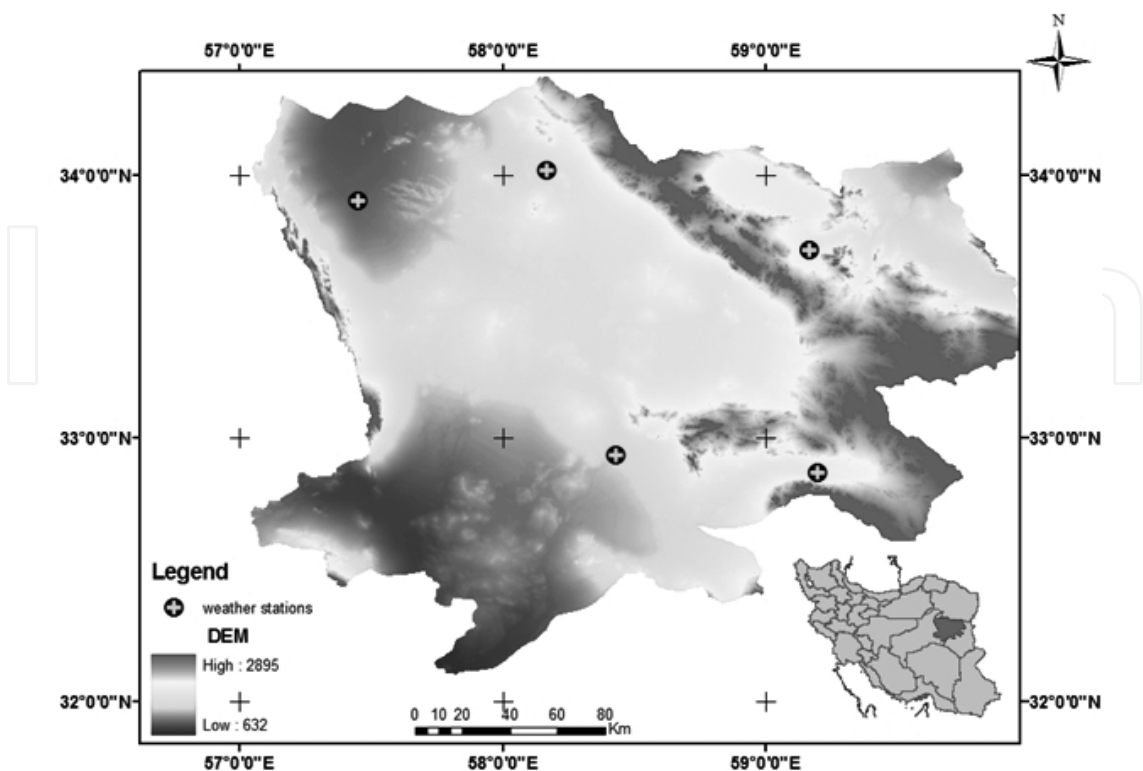


Figure 3. Under study region

Considering high level of sensitivity of the results to different sources of uncertainty in this study, uncertainty analysis was applied with bootstrap method at 95% confidence interval on the results after downscaling steps (Efron, 1993; Khan, 2006; Fakhry, 2012a; Fakhry, 2012b). Figure 3 shows the results of uncertainty analysis of downscaled data.

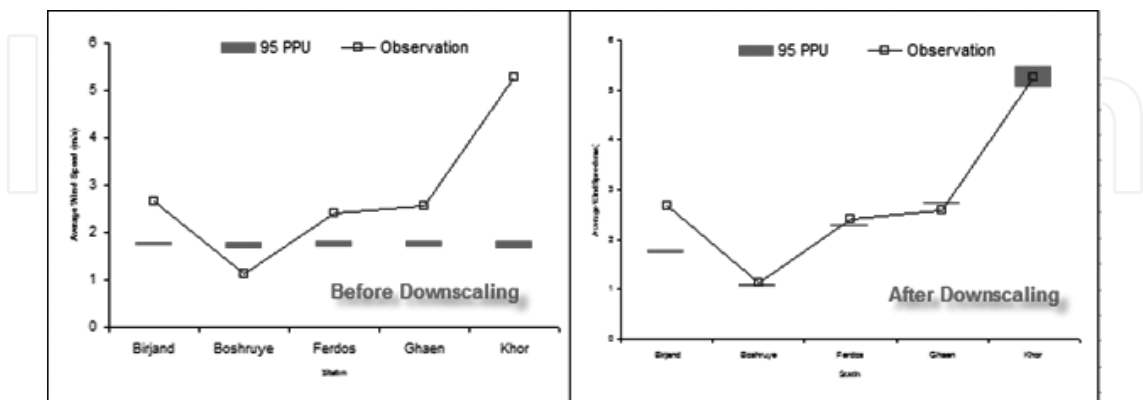
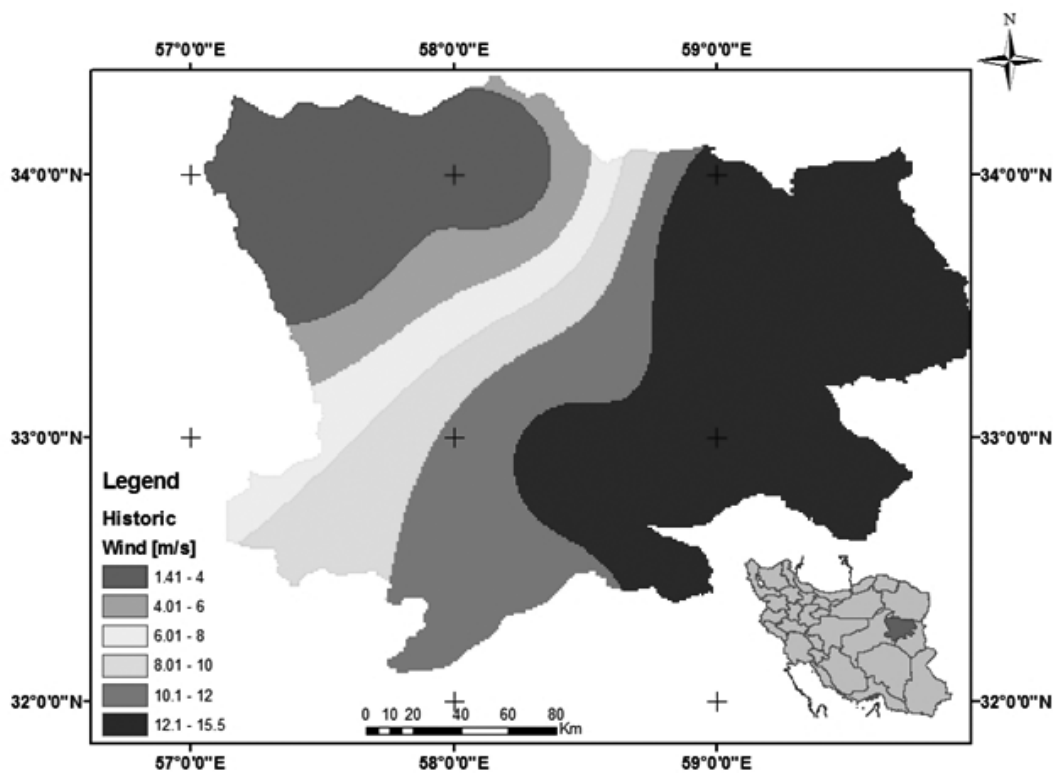


Figure 4. Uncertainty band before and after downscaling

After preparing average wind speed parameter for each station, frequency analysis is performed and the Weibull distribution is selected using L-moments method. Finally, the quantile

values corresponding to each return period were derived. Then, geostatistics method was applied for local interpolation and final map for the historical period was prepared.

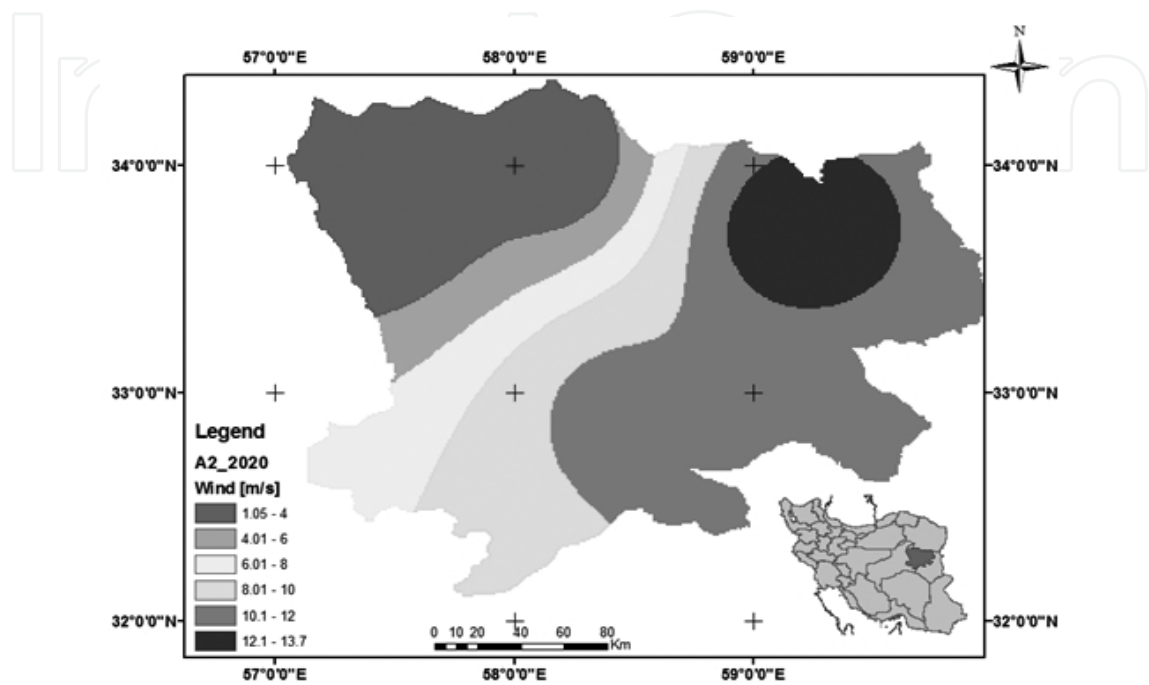
As the average wind speed was the single used parameter, only one map was drawn. In the case of many existed maps, final positioning could be possible by weighting, according to importance of the maps. Figure 4 shows precedence of potential locations to install wind power station in the region according to long duration of historical records. It is clear from the Figure that the regions with the highest and lowest potential of wind power plant construction are respectively located in the south eastern and north western parts.



**Figure 5.** Final historical wind map

To investigate the effect of climate change on positioning process, first the output of HADCM3 model under A2 emission scenario is derived from IPCC website and downscaled by using statistical downscaling techniques. In this study, linear regression method is used and by making wind speed time series of under study stations for near future period (2010-2039), the frequency analysis is performed again and the future map is presented.

As presented in Figure 6, climate change impacts on wind power plant construction in the regions with low priority will be negligible but in high priority ones, the best points are concentrated in the north eastern part.



**Figure 6.** Final future wind map under climate change conditions

## 20. Conclusions

This chapter made an attempt to initiate discussions on the impact of the climate change on construction of wind farms through various cases that have been presented. Climate change impact studies on wind farms should consider the following principle steps.

This study suggests that the main focus should be on using observational data, time series and frequency analysis and utilizing spatial interpolation methods to create the initial maps, which depict the wind velocity, direction and the average power generation could be calculated. The decision making of the wind farm location could start based on these initial maps and power analysis, which takes various factors into account. The following step would involve down-scaling process of the GCM model for initially selected sites. Comparing the GCM model output for future conditions to the historical maps drawn based on existing data. This process will be instrumental in helping to create a path to cope with a changing climate and its impact on the wind farms.

## Author details

Masoomeh Fakhry<sup>1\*</sup>, Mohammad Reza Farzaneh<sup>2</sup>, Saeid Eslamian<sup>3</sup> and Rouzbeh Nazari<sup>4</sup>

\*Address all correspondence to: Masoomeh.fakhri@gmail.com; m.farzaneh@modares.ac.ir; saeid@cc.iut.ac.ir; rnazari@citytech.cuny.edu

1 Department of Hydraulic Structure, Faculty of Water Science Engineering, Shahid Chamran University, Ahwaz, Iran

2 Department of Water Engineering, Tarbiat Modares University, Tehran, Iran

3 Department of Water Engineering, Isfahan University of Technology, Isfahan, Iran

4 Department of Construction Management and Civil Engineering Technology, City University of New York, USA

## References

- [1] Ackermann Th(2005). Wind power in power system, Royal Institute of Technology, Stockholm, Sweden.
- [2] Akday, S. A, Bagiorgas, H. S, & Mihalakakou, G. (2010). Use of Two-component weibull mixtures in the analysis of wind speed in the eastern, Applied Energy: , 2560-2573.
- [3] Aldrich, John ((1997). R. A. Fisher and the making of maximum likelihood 1912-1922. Statistical Science, , 12(3), 162-176.
- [4] Asif, M, & Muneer, T. (2007). Energy supply, its demand and security issues for developed and emerging economies, Renewable and Sustainable Energy Reviews,, 11, 1388-413.
- [5] Bogardi, I, & Matyasovszky, I. (1996). Estimating daily wind speed under climate change, Solar Energy , 57(3), 239-248.
- [6] Bonham-carter, G. F. (1994). Geographic Information Systems for Geoscientists: Modelling with GIS, 1<sup>st</sup> Ed. Pergamon Press, Oxford, UK.
- [7] Breslow, P. B, & Sailor, D. J. (2002). Vulnerability of wind power resources to climate change in the continental United States, Renewable Energy: , 27, 585-598.
- [8] Carta, J. A, & Ramirez, P. Vela'zquez, S. ((2009). A review of wind speed probability distributions used in wind energy analysis Case studies in the Canary Islands. Renewable and Sustainable Energy Reviews.13. , 933-955.

- [9] Chow, V. T, Maidment, D. R, & Mays, L. W. (1998). *Applied Hydrology*, McGraw-Hill.
- [10] Cunnane, C. (1989). Statistical distributions for flood frequency analysis, world meteorological organization operational hydrology, Report WMO-NO.718, Geneva, Switzerland.(33)
- [11] Deepthi, R, & Deo, M. C. (2010). Effect of climate change on design wind at the Indian offshore locations, *Ocean Engineering* , 37, 1061-1069.
- [12] Diakoulaki, D, & Karangelis, F. (2007). Multi-criteria decision analysis and cost-benefit analysis of alternative scenarios for the power generation sector in Greece, *Renewable and Sustainable Energy Reviews*;; 11, 716-27.
- [13] Doria, R, Madramooto, C, & Mehdi, B. B. (2006). Estimation of Future Crop Water Requirements for 2020 and 2050, Using CROPWAT. IEEE.
- [14] Efron, B, & Tibshirani, R. J. (1993). *An Introduction to the Bootstrap*, Monographs on Statistics 57 & Applied Probability, Chapman & Hall/CRC.
- [15] Enio, B. Pereira, Fernando R. Martins, Marcelo P. Pes, Eliude I. da Cruz Segundo, André de A. Lyra. ((2012). The impacts of global climate changes on the wind power density in Brazil, *Renewable Energy* :, 1-4.
- [16] Eslamian, S. S, & Feizi, H. (2007). Maximum Monthly Rainfall Analysis Using L-Moments for an Arid Region in Isfahan Province, Iran. *J. Appl. Meteorol. Clim.* , 46, 494-503.
- [17] Fakhry, M, Farzaneh, M, Eslamian, R, & Khordadi, S. S. M, J. ((2012a). Uncertainty assessment of downscaled rainfall to investigate impact of climate change on the probability of flood, *Journal of Flood Engineering* , 3(1)
- [18] Fakhry, M, Farzaneh, M, Eslamian, R, & Khordadi, S. S. M. J. ((2012b). Confidence interval assessment to estimate dry and wet spells under climate change in Shahrekord Station, Iran, ASCE, *Journal of Hydrologic Engineering*, (In Press).
- [19] Fisher, R. A. (1912). On an absolute criterion for fitting frequency curves. *Messenger of Mathematics* 41 155 160. CP1 Z. in Bennet 1971, Z., 1
- [20] Fisher, P. F. (1989). Knowledge-based Approaches to Determining and Correcting Areas of Unreliability in Geographic Databases, Goodchild, M., Gopal, S.: *The Accuracy of Spatial Databases*,, 45-54.
- [21] Greenwood, J. A, Landwehr, J. M, Matalas, N. C, & Wallis, J. R. (1979). Probability Weighted Moments: definition and relation to parameters of several distributions expressible in inverse form, *Water Resources Research* , 15(5), 1049-1054.
- [22] Harmsen, E, Miller, N. L, Schlegel, N. J, & Gonzalez, J. E. (2009). Seasonal climate change impacts on evapotranspiration, precipitation deficit and crop yield in Puerto Rico. *Agricultural Water Management* , 96, 1085-1095.

- [23] Hiremath, R. B, Shikha, S, & Ravindranath, N. H. (2007). Decentralized energy planning; modeling and application review, *Renewable and Sustainable Energy Reviews*, 11, 729-52.
- [24] Hosking, J. R. (1986). The theory of probability weighted moments. Res. Rep. RC12210, IBM Research Division, Yorktown Heights, New York 10598.
- [25] Hosking, J. R. and estimation of distributions using linear combinations of order statistics. *J. Royal Stat. Soc. B* , 52, 105-124.
- [26] Hosking, J. R. (1991). Approximations for Use in Constructing L-Moment Ratio Diagrams. Res. Rep. RC 16635, IBM Research Division, Yorktown Heights, New York 10598.
- [27] Hosking, J. R, & Wallis, J. R. (1991). Some Statistics Useful in Regional Frequency Analysis. Res. Rep. RC 17096, IBM Research Division, Yorktown Heights, New York 10598.
- [28] Hosking, J. R, & Wallis, J. R. (1993). Some statistics useful in regional frequency analysis. *Wat. Resour. Res.* , 29, 271-281.
- [29] Hosking, J. R, & Wallis, J. R. (1997). *Regional Frequency Analysis: An Approach based on Lmoments*. Cambridge University Press, Cambridge, UK.
- [30] Hoyme, H, & Zielke, W. (2001). Impact of climate changes on wind behaviour and water levels at the German North Sea coast. *Estuarine, Coastal & Shelf Science* , 53(4), 451-458.
- [31] IPCC(2012). *The IPCC Special Report on Renewable Energy Sources and Climate Change Mitigation*.
- [32] IPCC(2007). in: Alfsen, K., Barrow, Bass, E.B, Dai, Desanker, X.P., Gaffin, Giorgi, S.R.F., Hulme, M.M., Lal, L.J., Mata, L.O., Mearns, J.F.B., Mitchell, T., Morita, R., Moss, D., Murdiyarso, J.D., Pabon-Caicedo, J., Palutikof, M.L., Parry, C., Rosenzweig, B., Seguin, R.J., Scholes, D., and Whetton, P.H., *General guidelines on the use of scenario data for climate impact and adaptation assessment*. Cambridge University Press, UK.
- [33] IPCC(2001). in: Watson, R.T., Zinyowera, M.C., Moss, R.H., Dokken, D.J. (Eds.), *Special Report on The Regional Impacts of Climate Change, An Assessment of Vulnerability*. Cambridge University Press, UK.
- [34] Jose, A. cart, Penelope Ramirez, Celia Bueno. ((2008). A joint probability density function of wind speed and direction for wind energy analysis, *Energy Conversion and Managemant* , , 1309-1320.
- [35] Karvanen, J. (2006). Estimation of quantile mixtures via L-moments and trimmed L-moments, *Computational Statistics & Data Analysis* , 51(2), 947-959.



- [36] Khan, M. S, Coulibaly, P, & Dibike, Y. (2006). uncertainty analysis of statistical downscaling methods,. *journal of Hydrology*, , 319, 357-382.
- [37] Leander, R, & Bouishand, T. A. (2006). Resampling of regional climate model output for the simulation of extreme river flows. *Journal of Hydrology*, , 332, 487-496.
- [38] Pearson, K. (1902). On the systematic fitting of curves to observations and measurements, *Biometrika*, , 1, 265-303.
- [39] Peltola, H, Ikonen, V, Gregow, P, Strandman, H, Kilpelainen, H, Venalainen, A, & Kellomaki, A. S. ((2010). Impacts of climate change on timber production and regional risks of wind-induced damage to forests in Finland, *Forest Ecology and Management* , 260, 833-845.
- [40] Pereira Enio B, Martins Fernando R., Marcelo P. Pes, Eliude I. da Cruz Segundo, André de A. Lyra. ((2012). The impacts of global climate changes on the wind power density in Brazil, *Renewable Energy* :, 1-4.
- [41] Pryor, S. C, & Barthelmie, R. J. (2010). Climate change impacts on wind energy: A review, *Renewable and Sustainable Energy Reviews* , 14, 430-437.
- [42] Sailor, D J, Smith, M, & Hart, M. (2008). Climate change implications for wind power resources in the Northwest United States, *Renewable Energy* , 33, 2393-2406.
- [43] Sailor, D. J, Hu, T, Li, X, & Rosen, J. N. (2000). A neural network approach to local downscaling of GCM output for assessing wind power implications of climate change, *Renewable Energy* , 19, 359-378.
- [44] Samadi, S. Z, & Mahdavi, M. Sharifi Forood. Bihamta, M.R )(2009). Methodology for selecting the best predictor for climate change impact assessment in Karkheh Basin, Iran, *Journal of Environment Engineering and Science*, 51(4), 249-256.
- [45] Valle Costa C, La Roverea E., Dirk A. ((2008). Technological innovation policies to promote renewable energies: Lessons from the European experience for the Brazilian Case, *Renewable and Sustainable Energy Reviews*;; 12, 65-90.