

# We are IntechOpen, the world's leading publisher of Open Access books Built by scientists, for scientists

6,900

Open access books available

186,000

International authors and editors

200M

Downloads

Our authors are among the

154

Countries delivered to

TOP 1%

most cited scientists

12.2%

Contributors from top 500 universities



WEB OF SCIENCE™

Selection of our books indexed in the Book Citation Index  
in Web of Science™ Core Collection (BKCI)

Interested in publishing with us?  
Contact [book.department@intechopen.com](mailto:book.department@intechopen.com)

Numbers displayed above are based on latest data collected.  
For more information visit [www.intechopen.com](http://www.intechopen.com)



---

# Microbiological Chitosan: Potential Application as Anticariogenic Agent

---

Thayza Christina Montenegro Stamford, Thatiana Montenegro Stamford-Arnaud, Horacinna Maria de Medeiros Cavalcante, Rui Oliveira Macedo and Galba Maria de Campos-Takaki

Additional information is available at the end of the chapter

<http://dx.doi.org/10.5772/54453>

---

## 1. Introduction

Dental caries is the most prevalent oral disease that affects a significant part of the world population, especially in less developed countries. It is universally accepted that the dental caries is a chronic and multifactorial disease [1-3]. The permanence of the bacterial plaque on the tooth surface will lead to loss of minerals constituents of the dental enamel promoting the installation of the carie disease. The carious lesion is characterized by the tooth structure (hydroxyapatite) demineralization by the production of organic acids, such as lactic acid, resulting from bacterial (dental biofilm) metabolism. This results in loss of calcium and phosphate ions which subsequently diffuse out of the tooth. In this complex process, the microorganisms, particularly *Streptococcus* species, have an important role in its etiology [3-5].

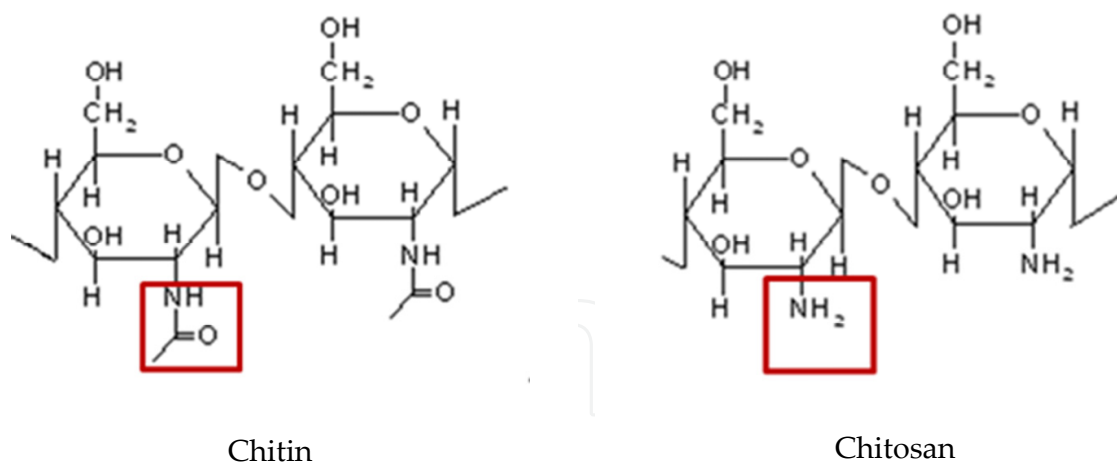
Many oral *Streptococcus* in the presence of carbohydrate produce organics acids and insoluble glucans which serve as binding sites for bacteria on the tooth surface, forming the biofilm. The sucrose plays an important role in carie development, influencing on biofilm acidogenicity and cariogenic microflora. The high cariogenicity of dental plaque formed in the presence of sucrose can be mainly explained by the high concentration of insoluble glucans on its matrix, the low inorganic concentration and its protein composition may have some contribution [6, 7].

Specifics microorganisms are associated with dental plaque formation, development and maturation. The *Streptococcus mutans* is a member of the oral microbial community which plays a key role in formation of cariogenic biofilms. The key factors of *S. mutans* cariogenic are the production of a great variety of carbohydrates, which generate low pH and cause the consequent demineralization of the tooth enamel [3, 8-10].

Recent developments in the areas of biomaterials devices have resulted in a number of advances in the searches of natural substances which may inhibit the dental plaque formation and/or the hydroxyapatite demineralization [11, 12]. In particular, this research is focused on novel macromolecules and biocompatible materials for use in clinical applications. Chitosan is a non-toxic and natural polysaccharide, which have many biological applications, mainly as antimicrobial agent [12].

## 2. Chitosan: General considerations

Chitosan is a natural co-polymers of chitin, composed by units of 2-amino-2-desoxy-D-glycopyranose and of 2-acetamide-2-desoxy-D-glycopyranose interconnected by glycosidic bonds  $\beta$ -1,4 in variable proportions. The first type of units is frequently present in chitosan. This polymer is naturally found in the cell wall of fungi, mainly in the Mucorales order [5, 13, 14]. Chitosan is formed by the chitin deacetylation, and the group N-acetyl can be suffer several degrees of deacetylation (Figure 1). Chitosan is characterized according to its deacetylation level and molar mass, once such features may influence the degradability and in the polysaccharide hydrolysis [15, 16]. According to the medium acetylation level (AL), chitosan may be obtained with physical-chemical properties differentiated regarding the solubility parameters, pKa and viscosity [17, 19]. It is difficult to obtain chitosan with high deacetylation level as due long process of isolation, and the degradation of the polymer also increases [5, 15].



**Figure 1.** Chemical structure of Chitin and Chitosan (Source: authors)

The synthesis of chitin from fungi and crustaceans differs significantly; however, steps of enzymatic machinery for biosynthesis and catalytic regulation are similar. In crustaceans is initiated by conversion of glucose 6-phosphate N-acetylglucosamine-1-phosphate, involving a series of stages that require several enzymatic reactions. N-acetylglucosamine-1-phosphate reacts with UTP forming the UDP N-acetylglucosamine, which finally transfers N-acetylglucosamine for the polymerization of chitin chains in a process mediated by the

enzyme chitin synthase and  $Mg^{+2}$  ion as catalyst, resulting in the formation of a long chain of subunits monosaccharide's linked by  $\beta$ -1  $\rightarrow$  4. Chitosan is thus obtained by deacetylation of chitin by chemical treatment with NaOH at high temperature [20].

Fungi the chitin and chitosan synthesis simultaneously were occurred. The synthesis of chitin is highly compartmentalized. The enzyme chitin synthase is the zymogen form and distributed in specific regions of the cell surface, vesicles in specialized, chitosome. The macromolecular assembly starts out of the cytoplasm, where the protease enzyme acts on the cell surface activating the zymogenes. In this way the UDP N-acetylglucosamine is produced from glucose, and chitin synthase catalyzes the transfer of N-acetylglucosamine for polymerization chain forming chitin. The chitosan present in cell walls of certain fungi (Mucorales) is formed from the deacetylation (chitin deacetylase) chain chitin source for the biosynthesis of chitin. The regulations of the synthesis of chitin and chitosan are determined by the spatial organization of the synthesis of chitin in the cell surface [20, 21].

Crustacean chitosan is inconsistent in its physical–chemical properties due to the variability in raw materials, the harshness of the isolation and conversion processes, the caustic effects of the chemicals used in the isolation process, and variability in the levels of deacetylation and protein contamination [22-24].

The use of biomass from fungi have demonstrated a great advantages, such as: independence of seasonal factor, wide scale production, simultaneous extraction of chitin and chitosan, extraction process is simple and cheap resulting in reduction of the time and cost required for production, and also absence of proteins contamination, mainly the proteins that could cause allergy reactions in individuals with shellfish allergies. However, to optimize the production of chitin and chitosan from fungi, it's usually used complex or synthetics cultures media, which are expensive. It's becomes necessary to obtain economic culture media that promote the growth of fungi and stimulate the production of the polymers [25-32].

In order to obtain alternative sources of nutrients and low cost several research projects are being conducted. Table 1 shows the use of various synthetic media and low cost alternative media used for growth of fungi of the order Mucorales, and production of chitin and chitosan. The content of chitin and chitosan from fungal cell wall varies among different species and growth conditions. Many studies have been performed to verify the possibility of using the biomass of fungi, especially Mucorales, class Zygomycetes, as an alternative source of chitin and chitosan. Many of these studies test simple models to verify the production of chitin and chitosan, ie, the approach adopted experiments using only one variable at a time during the fermentation, eg after cultivation, agitation, pH, temperature and concentration of nutrients. However, the literature report in recent years the scientific interest to reduce the numbers of tests and increase the accuracy of the results has been increased. Therefore, multivariate approach, using factorial design, allows the observation of the synergistic effect between the independent variables, since all variables are considered simultaneously, resulting in the final optimize conditions [30-34].

Microorganism	Substrate	Biomass (g.L <sup>-1</sup> )	Chitin (mg.g <sup>-1</sup> )	Chitosan (mg.g <sup>-1</sup> )	Reference
<i>Mucor circinelloides</i>	Yam bean	20.70	500	64	33
<i>Cunninghamella elegans</i>	Yam bean	24.30	440	66	32
<i>Cunninghamella elegans</i>	Hesseltine and Anderson added of 5%NaCl and 6%glucose	24.40	388	70	29
<i>Cunninghamella bertholletiae</i>	Sugar cane juice	7.70	-	128	30
<i>Aspergillus niger</i>	Potato Dextrose Broth	9.00	-	107	34
<i>Lentinus edodes</i>	Potato Dextrose Broth	1.4	-	33	34
<i>Zygosaccharomyces rouxii</i>	Yeast Malt Extract Broth	4.4	-	36	34
<i>Candida albicans</i>	Yeast Malt Extract Broth	1.8	-	44	34
<i>Rhizomucor miehei</i>	Sabouraod dextrose (SDB)	4.1	-	13.67	24

- Data not shown

**Table 1.** Chitin and chitosan production by Mucorales strains compared with *Cunninghamella cirnelloides* using yam bean as substrate.

### 3. Properties, antimicrobial and toxicity of fungi chitosan

Chitosan has numerous applications in several areas, mainly biomedical and pharmaceutical fields, due to its specific properties. Among their properties we highlight the excellent biocompatibility; almost any toxicity to human beings and animals; high bioactivity; biodegradability; reactivity of the group amino deacetylated; selective permeability; polyelectrolyte action; antimicrobial activity; ability to form gel and film; chelation ability and absorptive capacity [36-38]. These peculiar properties provide a variety of applications to the chitosan, such as: drug carrier of controlled release [36], anti-bacterial [37, 39] and anti-acid [38]; inhibition of the bacterial plaque formation and decalcification of dental enamel [2, 10]; promotes the osteogenesis [40]; and promotes the healing of ulcers and lesions [41, 42].

The applicability of chitosan is related to their physical-chemical properties considering the different sources (crustaceans, fungi, and mollusk's) and different processes for extraction and purification cause alterations in the degree of deacetylation, molecular weight, thermal stability and degree of crystallinity of the chitosan. Various derivatives of chitosan differ of the degree of deacetylation, molar weight, arrangement of residual N-acetyl groups in the chain considering the reaction of -NH<sub>2</sub> group at the carbon 2 (C2) or unspecific -OH group in position 3 carbons or 6 (C3 or C6) of the polymer with other functional groups are reported in the literature [15].

Chitosan is a weak base insoluble in water but soluble in dilute aqueous solutions of various acids, the most widely used is acetic acid [43]. The acid solubility is explained by the protonation of the free amino group, characteristic in the chitosan *in natura*, which change to  $\text{NH}_2$  to  $\text{NH}_3^+$ , whereas in alkaline condition, the hydro solubility is due to the formation of carboxylate, from the introduced carboxylic group [19, 44]. The possibility to obtain a variety of polymer derivatives with differences solubility, thermal stability, reactivity with other substances and specificity regarding the binding site, providing several biological applications of the chitosan [15]. Some applications of the chitosan, it is highlight it's the use in the pharmaceutical industry, more specifically related to dental clinic [43].

Chitosan has a recognized antimicrobial activity, being this, one of the main properties of the polysaccharide. Several researchers demonstrated that this polysaccharide has antimicrobial action in a great variety of microorganisms, included gram-positive bacteria and various species of yeast [21, 45]. In the literature is described that chitosan acts in the cellular wall of the microorganism modifying the electric potential of the cellular membrane [46]. This polysaccharide also acts potentiating other inhibition drugs, as the chlorhexidine gel, once it increases the drug permanence time action place [47, 48].

In reference [39] the authors report that chitosan has demonstrated low toxicity and the resistance development have not occurred. The antimicrobial action of the chitosan and its derivatives suffers influence from factors, which depending on the performed role may be classified in four main categories: 1. Microbial factors as species, age of the cell); 2. Intrinsic factors of the chitosan as: positive charge density, molecular weight, hydrophobic and hydrophilic characteristics, chelation capacity; 3. Physical state factors (soluble and solid state), and 4. Environmental factors (pH, ionic forces, temperature, and time).

The antimicrobial action mechanism of the chitosan is not yet fully elucidated, being several mechanisms are suggested by the literature. Some authors suggested the amino groups of the chitosan when in contact with physiological fluids are protonated and bind to anionic groups of the microorganisms, resulting in the agglutination of the microbial cells, and growth inhibition [49, 50]. On the other hand, reference [49] report that when interacting with the bacterial cell, the chitosan, promotes displacement of  $\text{Ca}^{++}$  of the anionic sites of the membrane, damaging them. Another postulate is the interaction between the positive load of the chitosan and the negative load of the microbial cell wall, because it causes the rupture and loss of important intracellular constituent of the microorganism life. Chitosan with low molecular weight penetrates in the cell and is linked to the microorganism DNA inhibiting the transcription and consequently the translation, whereas the chitosan of high molecular weight acts as a chelate agent, binding to the cell membrane [16].

Authors in reference [47] investigated the relation between antimicrobial activity of the chitosan and the characteristics of the cellular wall of bacteria. They verified that the chitosan is antibacterial agent more efficient to Gram-negative bacteria due the composition of phospholipids and carboxylic acids of the bacterial cellular wall. These results suggest that the effects of the chitosan are distinct in the two types of bacteria: in the case of the gram-positive, the hypothesis is that chitosan of high molecular mass may form films



around the cell that inhibit the absorption of nutrients, while chitosan of low molecular mass penetrates more easily in gram-negative bacteria, causing riots in the metabolism of these microorganisms.

Chitosan from *M. circineloides* was obtained as described the literature [33]. The chitosan with different molecular weight was obtained by methods of extraction. Hight molecular weight of chitosan was obtained by methodology described by Stamford et al [32], and Fai et al.[ 33], and low molecular weight of chitosan by methodology described by Hu et al.[54]. The degree of deacetylation for chitosan was determined by infrared spectroscopy, the molecular weights by viscosity described by Stamford et al [32] and Fai et al.[33]. However, the chitosan with low molecular weight showed antimicrobial activity to Gram positive and negative bacteria than chitosan of high molecular weight (Table 2)

Bacteria	Minimum inhibitory concentration (mg/ml)		Minimum bactericidal concentration (mg/mL)	
	Chitosan		Chitosan	
	ChLMW	ChHMW	ChLMW	ChHMW
<i>S. aureus</i>	1.25	2.5	2.5	5.0
<i>E. coli</i>	1.25	2.5	2.5	5.0
<i>P. aeruginosa</i>	0.625	1.25	1.5	5.0
<i>S. mutans</i>	0.625	1.25	1.5	5.0

**Table 2.** Minimum Inhibitory Concentration (mg.mL<sup>-1</sup>) of chitosan from *Mucor circineloides* with different molecular weight: Low molecular weight chitosan with  $3.2 \times 10^3$  g/mol (ChLMW) and higher molecular weight chitosan  $2.72 \times 10^5$  g/mol (ChHMW), against pathogenic bacteria

Studies *in vitro* were carried out in the Microbiology laboratory of UFPB to determine the Minimum Inhibitory Concentration (CIM) and the Minimum Bactericidal Concentration (MBC) of chitosan from different origins, and varying the parameters deacetylation degree and molecular weight to oral Streptococcus species. The results showed greater influence of the molecular weight of the polymer on antibacterial activity. The low molecular weight of chitosan have shown higher antimicrobial activity to CIM and CBM, when compared with chitosan gel (soluble in acetic acid 1%), and with higher molecular weight, as described in the Table 3.

In addition, chick embryo chorioallantoic membrane (CAM), is a rapid and inexpensive method for determination of tissue reactions to biomaterials, and was used to evaluate the chitosan toxicity and physiological compatibility. Positive control was used as sodium lauryl sulfate 1%. The method allows prediction of the potential irritation by chitosan was studied.

Fertile hen's eggs at 10<sup>o</sup> days of incubation at 37°C, obtained from Guaraves Guarabira Aves Ltda, were used in the tests. Five eggs were used for each chitosan solution assayed. On day 10 of incubation, the egg shell above the air space was removed. The exposed membrane was moistened with a drop of 0.9% physiological saline and the saline was removed, uncovering the CAM. An aliquot of 200 µl of chitosan solution was applied on the CAM. Signs of vasoconstriction, hemorrhage and coagulation for 5 minutes were observed to

evaluate the potential for irritation according to the method of HET-CAM. Thus, biocompatibility of chitosan was evaluated including the search for signs of inflammation, edema or neovascularization [55].

Chitosan	<i>Streptococcus</i> species							
	<i>S. mutans</i>		<i>S. sanguis</i>		<i>S. oralis</i>		<i>S. mitis</i>	
	CIM	CBM	CIM	CBM	CIM	CBM	CIM	CBM
Crustaceans 65DA% 3,5 x 10 <sup>6</sup>	1.25	5.0	1.25	7.5	1.25	5.0	1.25	5.0
Crustaceans 90DA% 3,5 x 10 <sup>6</sup>	1.25	2.5	1.25	5.0	1.25	2.5	1.25	2.5
Crustaceans 90DA% 3,1 x 10 <sup>4</sup>	0.625	1.25	0.625	2.5	0.625	1.25	0.625	1.25
Fungi 80% DA 2,72x 10 <sup>6</sup>	1.25	2.5	1.25	2.5	1.25	2.5	1.25	2.5
Fungi 90% DA 2,72x 10 <sup>6</sup>	1.25	2.5	1.25	2.5	1.25	2.5	1.25	2.5
Fungi 90% DA 2,3x 10 <sup>4</sup>	0.625	1.25	0.625	1.25	0.625	1.25	0.625	1.25

**Table 3.** Studies *in vitro* performed by Microbiology laboratory, UFPB (João Pessoa-PB, Brasil) demonstrating the Minimum Inhibitory Concentration (CIM) and Minimum Bactericidal Concentration (CBM) of the chitosan (derivatives from different origins, 80 and 90% of deacetylation degree (DA), molecular weight (MW) g/mL and solubility) to *Streptococcus* species

Assays	Chmw	Clmw	SLS 1%
Vasoconstriction	0.0±0.0	0.0±0.0	6.0 ±1.0
Hemorrhage	0.0±0.0	0.0±0.0	48 ±3.0
Coagulation	0.0±0.0	0.0±0.0	63 ±3.0
Irritation potential	0.0±0.0	0.0±0.0	17,74 ± 0,4

Non-irritating: 0-0.9 ; slightly irritating: 1-4.9; Irritating: 5-8.9 and Severely irritating: 9-21

**Table 4.** Test of chitosan to high (Chmw) and low (Clmw) molecular weight against vasoconstriction, hemorrhage and coagulation. Positive control: sodium lauryl sulfate 1% (SLS1%).

Assays	Inflammation		edema		neovascularization	
	Chmw	Clmw	Chmw	Clmw	Chmw	Clmw
1	0.0	0.0	0.0	0.0	0.0	0.0
2	0.0	0.0	0.0	0.0	0.0	0.0
3	0.0	0.0	0.0	0.0	0.0	0.0
4	0.0	0.0	0.0	0.0	0.0	0.0
5	0.0	0.0	0.0	0.0	0.0	0.0

**Table 5.** Test of chitosan to high (ChHMW) and low (ChLMW) molecular weight for inflammation, edema and neovascularization.



#### 4. Anticariogenic effects of chitosan

Experiments were performed in the Microbiology Laboratory-Nucleus of Research in Environmental Sciences- UNICAP (Recife, PE, Brazil) regarding the safety concentration for the dilution of fungi chitosan in acetic acid. The mechanisms of chitosan from crabs and fungi to inhibit the tooth colonization by *S. mutans*, *S. sanguis*, *S. mitis* and *S. oralis* were evaluated through the adherence test of chitosan to dental and bacteria surface, results showed in Figure 2. Chitosan from crabs and fungi, in all concentration tested, decreased the adsorption of *Streptococcus* strains to dental enamel, reduced the bacteria cell wall hydrophobicity and decreased the glucan production by bacteria. However, chitosan from fungi was more efficient than chitosan from crabs for the three parameters studied.

Figure 2A shows the decrease of bacteria adsorption to dental enamel in the presence of chitosan from crabs and fungi, in all concentrations studied. Chitosan demonstrated best performance at the concentration of 2mg/mL for *S. mutans* and of 3mg/mL for *S. sanguis*, *S. mitis* and *S. oralis*. These results are in agreement with the one obtained by [8], which studied the effect of chitosan from crabs of low molecular weight in the adsorption of *S. mutans*, *S. sanguis* and *S. oralis* to the commercial hydroxyapatite.

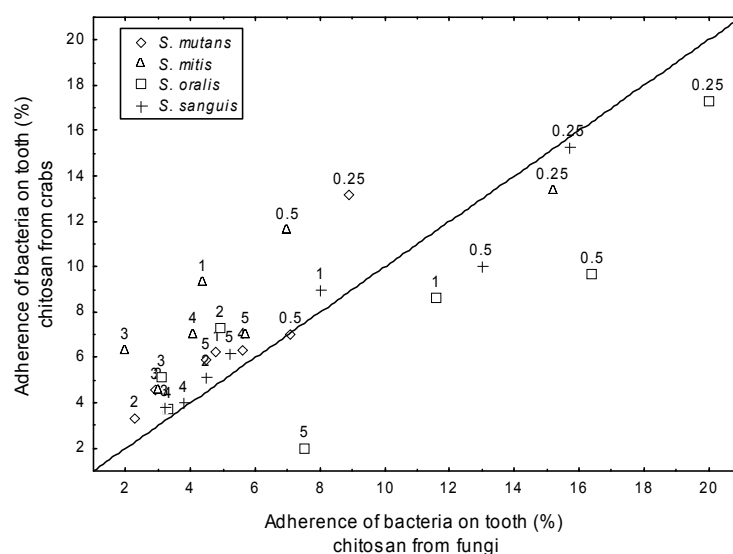
Researchers [9, 10] investigated, “in vivo”, the activity of a chitosan mouthrinse, respectively of 1% and 0.5%, and verified significant reduction of dental plaque formation. The authors reported that chitosan might be altering of the electrostatic interaction between the bacterial cell surface in saliva and tooth pellicle surface. The electrostatic interaction is usually repulsive due to the fact that in nature both bacteria and the pellicle surface are predominantly negatively charged. The chitosan chains attach themselves to the negatively charged bacterial cell surface by means of their positively charged groups. If these chains are of a sufficient length to bind more than one cell, bridges are formed between bacterial cells. As soon as the bridging becomes effective flocs are formed, and the bacteria cannot colonize the tooth surface.

In literature [8-10] is reported that aggregating oral bacteria may reduce their adherence to tooth surface. The polycationic nature of chitosan might reduce the initial bacterial adherence onto the teeth surfaces, at least in part, by generating bacterial aggregation. There have also been suggestions that bacterial aggregates are removed more easily from the oral cavity than individual bacterial cells.

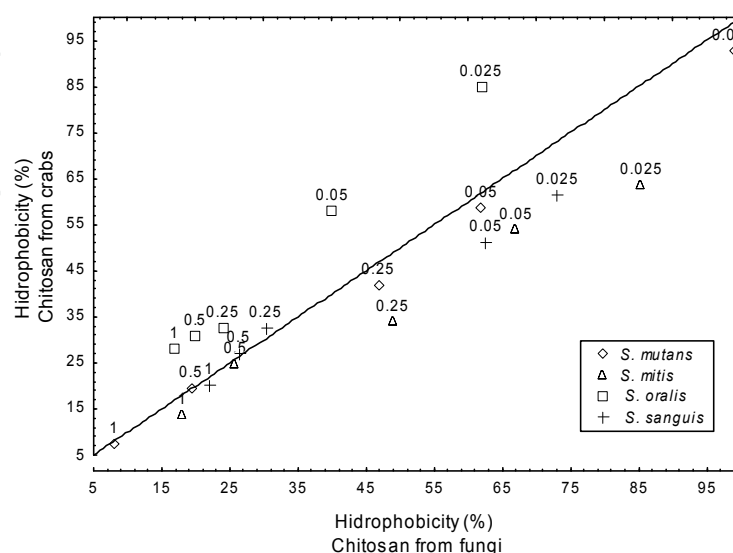
To verify the influence of chitosan, sublethal concentration, to modification in bacterial cell surface, it was evaluated the affinity of chitosan to xylene of bacteria grown in the presence or absence of chitosan sub-MICs, through hydrophobicity tests (Figure 2B), and for sucrose catabolization, through extracellular glucan production by bacteria strains (Figure 2C). The results in figure 2B indicates that increasing concentration of chitosan in bacterial suspension caused a successive decrease of the bacteria cell wall hydrophobicity, being more evident for the *S. mutans* strain. These results are supported by findings of [8,9]. These authors suggested that chitosan induced a successive decrease in cell hydrophobicity, and that surface hydrophobicity is related to adherence ability of bacteria. Therefore, the

inhibiting effects of chitosan may depend, at least, partially, on alterations of bacterial cell surface hydrophobicity expression.

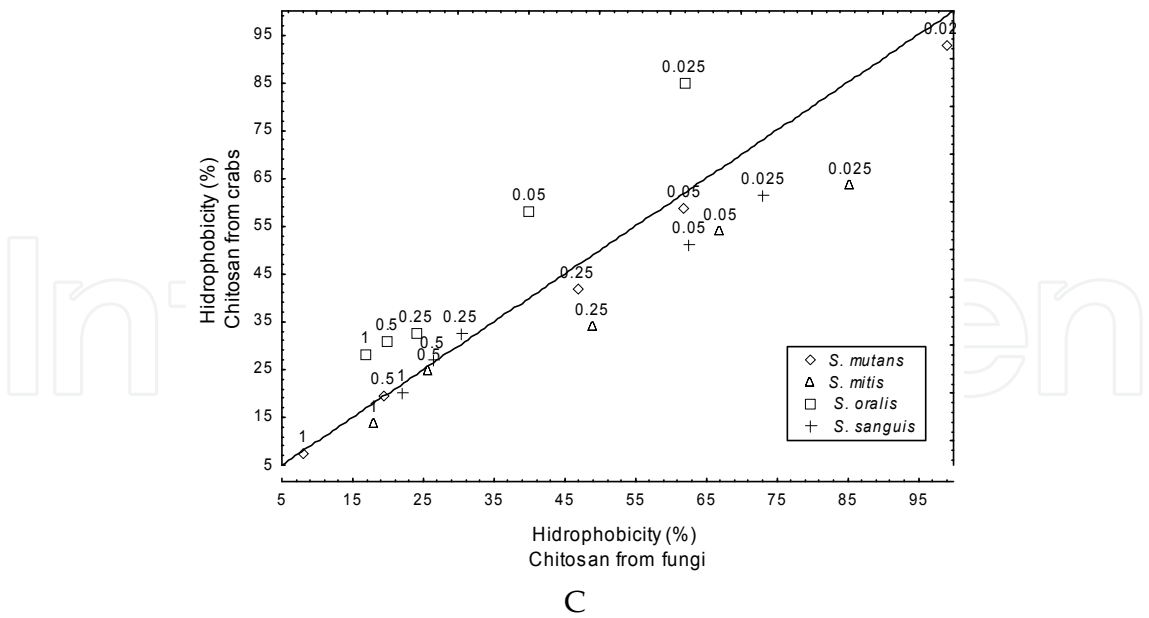
In figure 2C is observed a decreasing of extracellular glucan production by bacteria strain in presence of sucrose, with increasing chitosan concentration. The ionic interaction between the cation, according to [61,62], from chitosan (amine group) and anionics parts of bacteria cell wall (phospholipids and carboxylic acids) can form a membrane polymer, which prevents nutrients from entering the cell. Since chitosan could adsorb the electronegative substance, this polymer can promote cell flocculate, and disturbs the physiological activities of the bacteria and kill them. Authors [63] reported that chitosan interact with the electronegative bacterial cell surface resulting in displacement of  $\text{Ca}^{++}$  from anionic membrane sites, resulting in a changing the electric potential of the bacteria surface.



A

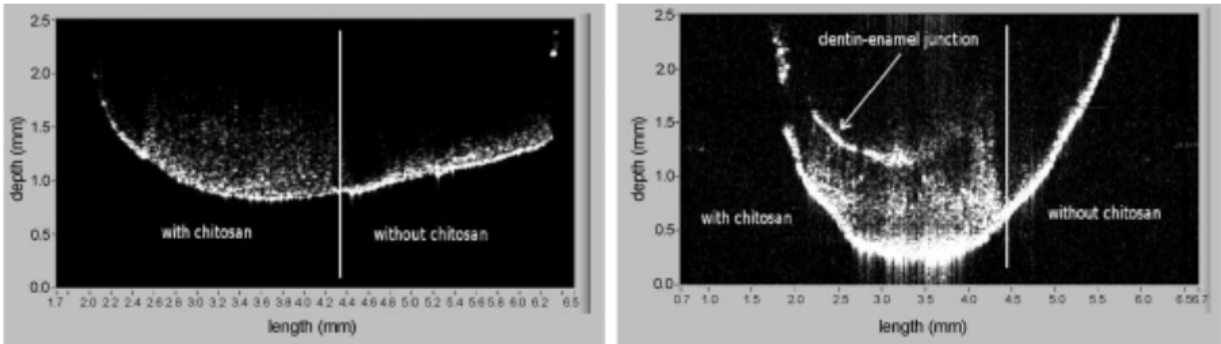


B



**Figure 2.** Diagram of stratification dispersion of chitosan from fungi and crabs activity: inhibition of bacteria adsorption on dental enamel (A); hydrophobicity of bacteria surface (B) and glucan production by bacteria (C).

Experiments were conducted in the department of chemistry's fundamental UFPE verified the penetration depth of chitosan in teeth enamel for two specimens by Optical Coherence Tomography (OCT) images. Chitosan was applied only to half of the teeth surface. The image in the left was obtained for a chitosan concentration of 1.25mg/ml. it is clearly seen the penetration of chitosan as indicated by the brighter area (caused by light scattering) in the figure, only in the region where chitosan may act as a mechanical barrier for the acid penetration in the enamel, which would explain its effect in the demineralization inhibition [2].



Sources: [2]

**Figure 3.** Optical Coherence Tomography (OCT) images of specimens treated with chitosan at 1.25mg/mL (left) and 5.0mg/mL (right)

6. Conclusion

The use of chitosan in different formulations, such as toothpaste (Chitodent®), mouthwash solution and chewing gum, is mentioned in literature [8-10]. In all forms the chitosan has

shown antibacterial action for bacteria belonging to the group *Streptococcus*, inhibits the growth and adherence of cariogenic bacteria and the desmineralization process of dental enamel *in vitro*, and stimulates salivation, *in vivo*. The results confirm a high biotechnological potential for chitosan from both fungi and crab sources as a cariostatic and anticariogenic agent, suggesting their application as dentistry biomaterial for prevention and therapeutic of dental carie.

## Author details

Thayza Christina Montenegro Stamford

*Department of Physiology and Pathology, Federal University of Paraíba, Paraíba-PB, Brazil*

Thatiana Montenegro Stamford-Arnaud

*Post-graduate in Materials Science, Federal University of Pernambuco, Recife-PE, Brazil*

Horacina Maria de Medeiros Cavalcante and Rui Oliveira Macedo

*Department of Pharmaceutical Science, Federal University of Paraíba, Paraíba-PB, Brazil*

Galba Maria de Campos-Takaki\*

*Nucleus of Research in Environmental Sciences, Catholic University of Pernambuco, Recife-PE, Brazil*

## Acknowledgement

The authors are gratefully to Conselho Nacional de Desenvolvimento Científico e Tecnológico (CNPq), Coordenação de Aperfeiçoamento de Pessoal de Nível Superior (CAPES), and Fundação de Amparo à Ciência e Tecnologia do Estado de Pernambuco (FACEPE).

## 7. References

- [1] Tahmourespour A, Kermanshahi RK, Saleh R, Pero NG. Biofilm formation potential of oral streptococci in related to some carbohydrate substrates. *African Journal of Microbiology Research*. 2010; 4 (11) 1051-1056.
- [2] Stamford-Arnaud TM, Barros Neto B, Diniz FB. Chitosan effect on dental enamel de-mineralization: an *in vitro* evaluation. *Journal of Dentistry*. 2010; 38 (11) 848-852.
- [3] Keegan GM, Smart JD, Ingram MJ, Barnes LM, Burnett GR, Rees GD. *Journal of Dentistry*. 2012; 40, 229-240.
- [4] Fitzgerald RJ, Keyes PH. Demonstration of the etiologic role of streptococci in experimental caries in the hamster. *Journal of the American Dental Association*. 1960; 61, 9-19.
- [5] Carvalho MMSG, Stamford TCM, Santos EP, Tenorio P, Sampaio F. Chitosan as n oral antimicrobial agent. In: Mendez A (ed). *Science against microbial pathogens*:

---

\* Corresponding Author

- Communicating current research and technological advances. Badajoz, Formatex. 2012. 542-550.
- [6] Steinberg D; Poran S; Shapira L. The effect of extracellular polysaccharides from *Streptococcus mutans* on the bactericidal activity of human neutrophils. *Archives of Oral Biology*. 1999; 44, 437-444.
  - [7] Cury LA; Rebelo MAS; Del Bel Cury AA; Derbyshire MTVC. Biochemical composition and cariogenicity of dental plaque formed in the presence of sucrose, glucose and fructose. *Caries Research*. 2000; 34, 491-497.
  - [8] Tarsi R; Corbin B; Pruzzo C; Muzzarelli RAA. Effect of low-molecular-weight chitosans on the adhesive properties of oral streptococci. *Oral Microbiology and Immunology*. 1999;13, 217-224
  - [9] Sano H; Shibasaki K; Matsukubo T; Takaesu Y. Comparison of the activity of four chitosan derivatives in reducing initial adherence of oral bacteria onto tooth surfaces. *Bulletin of Tokyo Dental College*. 2001; 42, 243-9.
  - [10] Sano H; Shibasaki K; Matsukubo T; Takaesu Y. Effect of chitosan rinsing on reduction of dental plaque formation. *Bulletin of Tokyo Dental College*. 2003; 44(1), 9-16.
  - [11] Alexander C, Marsh L. Creating the optimum environment for pressure area care. *Brazilian Journal of Nursery*. 1992;1(15),751-757.
  - [12] Ji QX, Zhong DY, Lu R; Zhang WQ; Jing D; Chen XG. In vitro evaluation of biomedical properties of chitosan and quaternized chitosan for dental applications. *Carbohydrate Research*. 2009; 344, 1297-1302.
  - [13] Canella KMNC, Garcia RB. Caracterização de quitosana por cromatografia de permeação em gel . influência do método de preparação e do solvente. *Quimica Nova* 2001;24(1),13-17.
  - [14] Silva MCF, Moraes-Filho M, Jara AMT, Silva AC, Stamford TCM, Campos-Takaki GM. Effect of phenanthrene on germination, radial growth and chitin and chitosan production by *Cunninghamella elegans* Lendner. p. 219-222. In: *Current Research Topics in Applied Microbiology and Microbial Biotechnology:proceedings id the II International Conference on Environmental, Industrial and applied microbiology (BioMicroWorld 2007)*. Editor Antonio Mendez-Vilas. World Scientific, 2009
  - [15] Costa Silva HSR, Santos KSCR, Ferreira EI. Quitosana: derivados hidrossolúveis, aplicações farmacêuticas e avanços. *Quimica Nova*; 2006, 29(4), 776-785.
  - [16] Pedro AS, Cabral-Albuquerque E, Ferreira D, Sarmiento B. Chitosan: na option for development of essential oil delivery systems for oral cavity care? *Carbohydrate Polymers*,2009, 76, 501-508
  - [17] Franco LO, Stamford TCM, Stamford NP, Campos-Takaki GM. *Cunninghamella elegans* (IFM 46109) como fonte de quitina e quitosana. *Revista Analytica*, 2005; 3(10),40-44.
  - [18] Stamford-Arnaud TM, Stamford TCM. Caracterização da quitosana e sua aplicação na nanotecnologia. Cap 6 p.733-761. In: *Biotechnologia aplicada à agricultura: Textos de apoio e protocolos experimentais*. Editores FIGUEIREDO MVB; BURITY HA OLIVEIRA JP;

- SANTOS CERS; STAMFORD NP. Embrapa Informação Tecnológica; Instituto Agrônômico de Pernambuco (IPA), p.761, 2010
- [19] Garcia RB, Silva DLP, Costa M, Raffin FN, Ruiz NMS. Avaliação de géis obtidos a partir da acetilação da quitosana em meio heterogêneo *Quím. Nova* (2008), 31(3).
- [20] Campos-Takaki GM The fungal versatility on the copolymers chitin and chitosan production. In: Dutta PK (ed.). *Chitin and chitosan opportunities and challenges*. India, SSM: International Publication. 2005, 69-94.
- [21] Stamford TCM, Stamford TLM, Franco LO. Produção, propriedades e aplicações da quitosana na agricultura e no ambiente. Cap. 21 p 487-506. In: *Microorganismos e agrobiodiversidade: o novo desafio para a agricultura*. Ed Figueiredo MVB; Burity HA; Stamford NP; Santos CERS. Agro livros, 568p. 2008
- [22] Nadarajah K; Kader J; Mohd M; Paul DC. Production of chitosan by fungi, *Journal of Biological Science*. 2001, 4 (3), 263-265.
- [23] Nwe N; Chandkrachang S; Stevens WF; Maw T; Tan TK; Khor E; Xong SM. Production of fungal chitosan by solid state and submerged fermentation. *Carbohydrate Polymer*, 2002,49 (2), 235-237
- [24] Tajdinia F; Ali Aminia M; Nafissi-Varchehc N; Faramarzi MA. Production, physiochemical and antimicrobial properties of fungal chitosan from *Rhizomucor miehei* and *Mucor racemosus*. *International Journal of Biological Macromolecules*, 2010, 47, 180-183
- [25] Andrade VS; Barros Neto B; Souza W; Campos-Takaki GM. A factorial designs analysis of chitin production by *Cunninghamella elegans*. *Canadian Journal of Microbiology*, 2000, 46, (11), 1042-1045.
- [26] Amorim RVS; Souza W; Fukushima K; Campos-Takaki GM. Faster chitosan production by mucoralean strains in submerged culture. *Brazilian Journal of Microbiology*, 2001, 32 (1), 20-23.
- [27] Andrade VS; Barros Neto B; Fukushima K; Campos-Takaki GM. Effect of medium components and time of cultivation on chitin production by *Mucor circinelloides* (*Mucor javanicus* IFO 4570)-A factorial study. *Revista Iberoamericana de Micologia*, 2003, 20, 149-153.
- [28] Amorim RVS; Ledingham WM; Fukushima EK; Campos-Takaki GM. Screening of chitin deacetylase from Mucoralean strains (Zygomycetes) and its relationship to cell growth rate. *Journal of Industrial Microbiology and Biotechnology*, 2005, 31, 19-23.
- [29] Silva MCF; Stamford TCM; Franco LO; Campos-Takaki GM. Effects of salinity and glucose on chitin and chitosan production by *Cunninghamella elegans*. *Asian Chitin Journal*, 2006, 2, 29-38.
- [30] Amorim RVS; Pedrosa RP; Kazutaka F; Martínez CR; Ledingham WM; Campos-Takaki GM. Alternative carbon sources from sugar cane process for submerged cultivation of *Cunninghamella bertholletiae* to produce chitosan. *Food Technology and Biotechnology*, 2006, 44 (4), 519-523.



- [31] Silva MCF; Barros Neto B; Stamford TCM; Campos-Takaki GM. Effect of environmental conditions on chitin and chitosan production by *Cunninghamella elegans* UCP 542 using factorial design. *Asian Chitin Journal*, 2007, 3, 15-22.
- [32] Stamford TCM; Stamford TLM; Stamford NP; Barros Neto B; Campos-Takaki GM. Growth of *Cunninghamella elegans* UCP 542 and production of chitin and chitosan using yam bean medium. *Electronic Journal of Biotechnology* 2007, 10, 1. Available at: <<http://www.ejbiotechnology.info/content/vol10/issue1/full/1/>>. Accessed on: 04/16/2011.
- [33] Fai AEC; Stamford TCM; Stamford-Arnaud TM; Santa-Cruz PDA; Silva MCF; Campos-Takaki GM; Stamford TLM. Physico-chemical characteristics and functional properties of chitin and chitosan produced by *Mucor circinelloides* using yam bean as substrate. *molecules* *Molecules* 2011, 16, 7143-7154; doi:10.3390/molecules16087143
- [34] Pochanavanich, P.; Suntornsuk, W. Fungal chitosan production and its characterization. *Lettes Applied Microbiology*. 2002, 35, 17-21.
- [35] Winterowd JG, Sandford PA Chitin and Chitosan. In: Stephen AM. *Food Polysaccharides and Their Applications*. New York: Marcel Dekker, 1995.
- [36] Hamman, JH. Chitosan Based Polyelectrolyte Complexes as Potential Carrier Materials in Drug Delivery Systems. *Marine Drugs*; 2010, 8, 1305-1322
- [37] Feng Y, Xia W. Preparation, characterization and antibacterial activity of water-soluble O-fumaryl-chitosan. *Carbohydrate Polymers*, 2011, 83, 1169–1173
- [38] Shibasaki K, Sano H, Matsukubo T, Takaesu Y. The influence of the buffer capacity of various substances on pH changes in dental plaque. *Bullet Tokyo Dental College* (1994), 35(1):27-32.
- [39] Kong M, Chen XG, Xing K, Park HJ. Antimicrobial properties of chitosan and mode of action: A state of the art review. *International Journal of Food Microbiology*, 2010, 144: 51–63
- [40] Murugan R, Ramakrishna S. Bioresorbable composite bone paste using polysaccharide based nano hydroxyapatite. *Biomaterial*, 2004, 25:3829 –3835
- [41] Tanodekaew S, Prasitsilp M, Swasdison S, Thavornnyutikarn B, Pothsree, Pateepasen, R. Preparation of acrylic grafted chitin for wound dressing application. *Biomaterial*, 2004, 25:1453-1460.
- [42] Maia RCC, Franco LO, Stamford TCM, Fukushima K, Porto ALF, Campos-Takaki GM. Chitin produced by *Cunninghamella elegans* (IFM 46109) and applied to wound healing. *Asian Chitin Journal*, 2006, 2:11-20
- [43] Laranjeira MCM, Fávere VT. Quitosana: biopolímero funcional com potencial industrial biomédico. *Química Nova* 2009, 32(3): 672-678.
- [44] Pillai CKS, Paul W, Sharma CP. Chitin and chitosan polymers: Chemistry, solubility and fiber formation. *Progress Polymer Science*, 2009, 34, 641–678
- [45] Xia W, Liu P, Zhang J, Chen J. Biological activities of chitosan and chitooligosaccharides. *Food Hydrocolloids*, 2011, 25, 170-179
- [46] Yadav AV, Bhise .B. Chitosan: a potencial biomaterial effective against typhoid. *Currient Science*, 2004, 87(9), 1176-1178.

- [47] Chung YC, Su YP, Chen CC, Jia G, Wang HL, WU JCG, LIN JG. Relationship between antibacterial activity of chitosan and surface characteristics of cell wall. *Acta Pharmacologica Sinica*. 2004, 25(7), 932-936.
- [48] Muzzarelli R, Tarsi R, Filippini O, Giovanetti E, Biagini G, Varaldo PE. Antimicrobial properties of N-carboxybutyl chitosan. *Antimicrob. Agents Chemotherapy*, 1990, 34, 2019-2023.
- [49] Senel S, İkinci G, Kas S, Yousefirad A, Sargon M,; Hincal AA. Chitosan films and hydrogels of chlorhexidine gluconate for oral mucosal delivery. *International Journal of Pharmaceutical*, 2000, 5(2), 197-203.
- [50] Avadi, MR., Sadeghi, AMM., Tahzibi, A., Bayati, KH., Pouladzadeh, M., Zohuriaan-Mehr, MJ., *et al.* Diethylmethyl chitosan as an antimicrobial agent: synthesis, characterization and antibacterial effects. *European Polymer Journal*, 2004, 40: 1355-1362.
- [51] Tsai GJ, Hwang SP. In vitro and in vivo antibacterial activity of shrimp chitosan against some intestinal bacteria. *Fisher. Scientific*. 2004, 70: 675-681.
- [52] İkinci G, Senel S, Akincibay H, Kas S, Ercis S, Wilson CG, Hincal A.A.: Effect of chitosan on a periodontal pathogen *Porphyromonas gingivalis*. *International Journal of Pharmaceutical*, 2002, 235: 121-7
- [53] Zheng LY, Zhu JF. Study on antimicrobial activity of chitosan with different molecular weights. *Carbohydrate Polymer*, 2003, 45: 527-530
- [54] Hu KJ; Yeung KW; Ho KP; Hu JL. Rapid extraction of high-quality chitosan from mycelia of *Absidia glauca*. *Journal of Food Biochemistry*, 1999, 23(2), 187-196.
- [55] Bagley DM; Waters D; Kong BM. Development of a 10-day chorioallantoic membrane vascular assay as an alternative to the Draize rabbit eye irritation test. *Food and Chemical Toxicology*, 1994, 32, 1155-1160.
- [56] Vargas A; Zeisser-Labouèbe M; Lange N; Gurny R; Delie F. The chick embryo and its chorioallantoic membrane (CAM) for the *in vivo* evaluation of drug delivery systems. *Advanced Drug Delivery Review*, 2007, 59, 1162-1176.
- [57] Alany, R. G.; Rades, T.; Nicoll, J.; Tucker, I. G.; Davies, N. M. W/O microemulsions for ocular delivery: Evaluation of ocular irritation and precorneal retention. *Journal of Controlled Release*. 2006, 111, 145-152.
- [58] Lagarto, A.; Vega, R.; Guerra, I.; González, R. In vitro quantitative determination of ophthalmic irritancy by the chorioallantoic membrane test with trypan blue staining as alternative to eye irritation test. *Toxicology In Vitro*. 2006, 20, 699-702.
- [59] Valdes, T. I.; Kreutzer, D.; Moussy, F. The chick chorioallantoic membrane as a novel *in vivo* model for the testing of biomaterials. *Journal of Biomedical Materials Research*. 2001, 62(2) 273-282.
- [60] Zwadlo-Klarwasser, G.; Gorlitz, K.; Hafemann, B.; Klee, D.; Klosterhalfen, B. The chorioallantoic membrane of the chick embryo as a simple model for the study of the angiogenic and inflammatory response to biomaterials. *Journal of Materials Science Materials in Medicine*. 2001, 12, 195-199.

- [61] Ikinci G, Senel S, Akincibay H, Kas S, Ercis S, Wilson CG, Hincal A.A.: Effect of chitosan on a periodontal pathogen *Porphyromonas gingivalis*. *International Journal of Pharmaceutical*, 2002,235,121-7
- [62] Zheng LY, Zhu JF. Study on antimicrobial activity of chitosan with different molecular weights. *Carbohydrate Polymer*, 2003, 45, 527-530
- [63] Yadav AV, Bhise .B. Chitosan: a potencial biomaterial effective against typhoid. *Current. Science*, 2004, 87(9), 1176-1178.