

We are IntechOpen, the world's leading publisher of Open Access books Built by scientists, for scientists

6,900

Open access books available

185,000

International authors and editors

200M

Downloads

Our authors are among the

154

Countries delivered to

TOP 1%

most cited scientists

12.2%

Contributors from top 500 universities



WEB OF SCIENCE™

Selection of our books indexed in the Book Citation Index
in Web of Science™ Core Collection (BKCI)

Interested in publishing with us?
Contact book.department@intechopen.com

Numbers displayed above are based on latest data collected.
For more information visit www.intechopen.com



Treatment Options for Gastrointestinal Stromal Tumors

Kai-Hsi Hsu

*Institute of Clinical Medicine, College of Medicine, National Cheng Kung University
Department of Surgery, Tainan Hospital, Department of Health, Executive Yuan, Tainan
Taiwan, Republic of China*

1. Introduction

The term gastrointestinal stromal tumor (GIST) in the description of a specific group of gastrointestinal nonepithelial tumors lacking the microscopic evidence of smooth muscle or characteristics of neural immunoreactivity was first introduced by Mazur and Clark (Mazur & Clark, 1983). The common origin of GIST and interstitial cell of Cajal (ICC), the pacemaker cells in the digestive tract, was proposed due to their immunohistochemical and ultrastructural similarities. The definition of GISTs as tumors originating from ICC was further confirmed according to the findings that both GIST and ICC express KIT and that most GISTs have gain-of-function mutations of *KIT*, the proto-oncogene that encodes a 145 kDa transmembrane tyrosine kinase KIT receptor. Mutation of different exons of the *KIT* oncogene results in activation of the tyrosine kinase activity of KIT, leading to ligand-independent kinase activity and uncontrolled cell proliferation as well as resistance to apoptosis (Demetri et al., 2002; Hirota et al., 1998; Kindblom et al., 1998; Savage & Antman, 2002). More than 90% of GIST have constitutive activation of the KIT protein as a result of *KIT* mutation and in GIST without KIT mutations, gain-of-function of platelet derived growth factor receptor α (PDGFR α) are present in about one-third of cases. It was recently proposed that ETV1, one of the ETS family transcription factor, can be a lineage survival factor that cooperates with KIT in gastrointestinal stromal tumours. GIST arises from ICCs with high levels of endogenous ETV1 expression that, when coupled with an activating KIT mutation, drives an oncogenic ETS transcriptional program (Chi et al., 2010; Roberts & Eisenberg, 2002; Rubin et al., 2001).

GIST was estimated to occur in about 14.5 cases per million and was the most common mesenchymal tumor of the gastrointestinal tract. The most common locations of GIST are the stomach (50-60%), small intestine (20-30%), colon and rectum (10%), and esophagus (5%). Patients mostly present with nonspecific symptoms and signs (69%) and initial metastasis was noted in about 15-50% of GISTs (DeMatteo et al., 2000; Fletcher et al., 2002; Nilsson et al., 2005; Roberts & Eisenberg, 2002; Shinomura et al., 2005).

The accurate diagnosis of GIST should be based on tumor morphology and immunohistochemistry. GIST tumors grossly appear as well-defined submucosal lesion with prominent vasculature and occasional hemorrhage or ulceration (Fig. 1A and 1B). Under morphologic examination in the immunohistochemical analysis, GIST tumor cells are

generally classified as three morphologic subtypes, including spindle cell type in the majority, epithelioid cell type and mixed type composed of both spindle and epithelioid cells (Fig. 1C). Similarly, tumor cells in GIST cell lines *in vivo* presents as spindle cell morphology in the majority, regardless of the types of the GIST cell line (Fig. 1D).

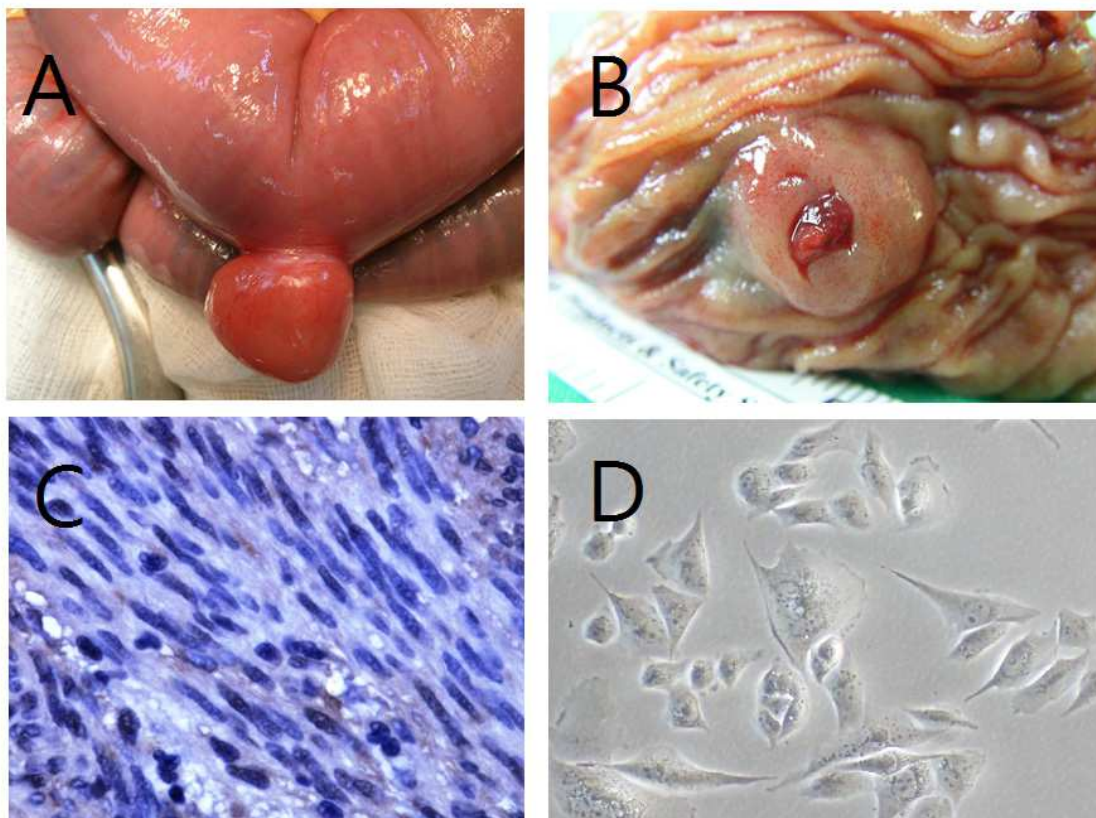


Fig. 1. Macroscopic and microscopic inspection of GIST tumor.

A. Small intestinal GIST. B. GIST tumor with central ulceration. C. GIST tumor cell by immunohistochemical staining demonstrating both types of spindle and epithelioid tumor cells. D. GIST tumor cell line.

In the diagnosis of GIST, KIT has been shown to be a specific and sensitive marker in the differential diagnosis of gastrointestinal mesenchymal tumors. The majority of GISTs express KIT, and approximately only 4-5% of GISTs are KIT negative. There may be different KIT-staining patterns. KIT-negative GISTs preferentially occur in the stomach and usually show pure epithelioid or mixed cytomorphology (Debiec-Rychter et al., 2004; Hirota et al., 1998; Kindblom et al., 1998; Medeiros et al., 2004).

In recent years, numerous antibodies for the diagnosis of GIST have been identified. These immunohistochemical markers were mainly noted and verified in molecular studies and may be of value in the diagnosis in KIT-negative GISTs. Discovered on GIST (DOG1), an up-regulated transmembrane protein found in GISTs, is one of the markers of significance. Recent studies have demonstrated that antibodies against DOG1 have greater sensitivity and specificity than KIT (CD117) and CD34, serving as specific immunohistochemical markers for GIST regardless of the KIT/PDGFR mutation or KIT immunohistochemical expression. Carbonic anhydrase II (CA II) and protein kinase C (PKC)-theta, a member of

the protein kinase C family, in addition to being biomarkers frequently expressed in the majority of GISTs with high specificity, are also of diagnostic as well as prognostic values (Blay et al., 2004; Duensing et al., 2004; Espinosa et al., 2008; Lee et al., 2008; Liegl et al., 2009; Miettinen et al., 2009; Parkkila et al., 2010; West, RB et al., 2004).

The role of biopsy in the diagnosis of GIST is unclear. In tumors with fragile consistency and hypervascularity, biopsy is not suggested due to risk of bleeding, capsular perforation with rupture and tumor seeding. Although tissue biopsy can be conducted safely and accurately by endoscopy or other image-guided methods, the submucosal location of the tumors often make accurate sampling difficult. Necrosis, ulceration and hemorrhage are common in GIST tumor tissues and may limit and preclude the feasibility and plausibility of fine needle aspirates or core biopsies. In certain situations, biopsies may be of value in differential diagnosis when other disease entities are suspected or when diagnosis is necessary for subsequent planning of treatment (Garcia dePolavieja et al., 2010)

Imaging studies play a diagnostic role for evaluation of suspected GIST patients for characterization of the tumor. Contrast-enhanced computerized tomography (CT) scanning and occasionally magnetic resonance imaging (MRI) are the imaging modality of choice for initial evaluation and [¹⁸F]2-fluoro-2-deoxy-D-glucose-positron emission tomography (FDG-PET)/CT has recently become important in both diagnosis and assessment of tumor response to targeted therapy in the adjuvant as well as neoadjuvant therapy in GIST.

For small tumors found incidentally, CT scanning or endoscopic ultrasound is recommended (Blackstein et al., 2006; Van den Abbeele et al., 2008).

While the treatment of GISTs with radiotherapy or systemic chemotherapy was unsuccessful in the majority, complete surgical resection remains the gold standard in the management of primary GIST. The recurrence rate of GIST, even in patients with resectable GIST, ranges from 17 to 24% in some series but has also been reported to be as high as 80%. The median survival for patients with recurrence is about 9-12 months (Demetri et al., 2002; Iesalnieks et al., 2005; Nilsson et al., 2005; Shinomura et al., 2005; Zhu et al., 2010).

Imatinib mesylate, an tyrosine kinase inhibitor (TKI) for both normal and mutated KIT found in most GISTs, was the first effective drug in the treatment of metastatic GIST and was approved by the Food and Drug Administration (FDA) for the treatment of unresectable and metastatic GIST in 2002 (Kwon et al., 2001; DeMatteo et al., 2002; Demetri et al., 2002; Savage & Antman, 2002). Adjuvant therapy with imatinib theoretically might improve the curative rate after complete resection of primary GIST by eradicating residual microscopic disease. Trials on adjuvant imatinib after complete resection of primary GIST have been evaluated in patients with a substantial risk of relapse. Recent studies confirmed that adjuvant target therapy with imatinib was effective in improving disease-free survival in GIST after surgery in high-risk patients, potentiating upcoming wide clinical application of adjuvant imatinib treatment in GIST. Since the introduction of imatinib as the target therapy for treatment of advanced GIST, acquired or secondary resistance to imatinib was found to develop in some GIST patients (Corless et al., 2004; DeMatteo et al., 2009; Demetri et al., 2002; Heinrich & Corless, 2005; Verweij et al., 2004). Another tyrosine kinase inhibitor, sunitinib malate has recently been approved as a second-line treatment for GIST patients who develop resistance to or cannot tolerate imatinib. Sunitinib has also been approved by the US FDA as second-line therapy for patients with advanced GIST. Newer agents are currently being evaluated in clinical trials. Identifying factors or biomarkers predicting high

risk of disease progression in GIST patients thus becomes increasingly important and has been reported in numerous studies (Blanke et al., 2009; Corless et al., 2004; Keun et al., 2008). Numerous studies have been devoted to the identification of specific clinical and pathological markers of prognostic significance (Hsu et al., 2007a, 2007b, 2010a, 2010b; Kwon et al., 2001; Miettinen et al., 2002; Rudolph et al., 1998; Yan et al., 2003). Among miscellaneous prognostic parameters, tumor size and mitotic figure have been considered most useful and reliable predictive variables for prognosis with good reproducibility and statistical consistency. A Consensus guidelines and classification system for GIST risk stratification, referred to as the National Institutes of Health (NIH) Consensus Criteria for GIST risk stratification, that categorizes GIST patients with GIST into low, intermediate, and high-risk groups according to these two parameters has been proposed and was widely applied in the clinical setting for risk analysis for patients with GIST (Hsu et al., 2007a, 2007b; Fletcher et al., Shinomura et al., 2005).

Recently, the integration of tumor location as the third parameter in NIH Consensus Criteria for GIST risk stratification, with intestinal localization of the tumor being a poor prognostic factor, was proposed to help more accurately predicting risk of recurrence and poor prognosis after surgery in patients with GIST, so that potential candidates for adjuvant imatinib therapy can be identified (Gold et al., 2009; Joensuu, 2008; Patel, 2011).

With the advent and rapid progress in the development as well as application of TKI in GIST, the treatment of GIST evolves significantly in recent years. Adjuvant, neoadjuvant therapy and new TKI agents are among the most focused issues of intensive investigations in the management of GIST in the post-TKI era. Revolutionary innovations in surgical techniques such as newly developed laparoscopic modalities have also contributed to the armamentarium of GIST management. Treatment options for GIST with respect to disease stages and different intervention strategies will be presented in this chapter.

2. Primary resectable GIST

2.1 General principles of surgery

Surgical resection has been the standard treatment for patients with localized, resectable GISTs. Specific surgical strategies are required according to the organ involved, tumor location, and tumor size. The goal of resection is to achieve complete (R0) excision of the tumor with negative margins, in the absence of residual disease grossly and microscopically. In general, primary GIST tumors tend not to invade surrounding organs or tissues. Wedge or segmental resection of the involved organs or tissues bearing the tumor is adequate. Lymph node metastasis is uncommon and lymphadenectomy has been considered unnecessary in GIST. In rare occasions when enlarged nodes are found at the time of operation, these should be removed with the primary GIST tumor. It is generally acceptable that a margin of 2 cm be adequate. However, there are no prospectively collected data available with regard to the adequate margin and to whether the extent of resection margins correlate with the risk of tumor recurrence or metastasis.

During operation, care should be taken to thoroughly evaluate the peritoneal cavity, especially the liver and peritoneum, the most common sites of disease spread for metastasis. Suspicious peritoneal lesions should be resected. Extreme care should also be taken during manipulation of the tumor to prevent excessive bleeding and peritoneal dissemination of tumor cells so that tumor rupture, one of the contributing factors associated with recurrence, does not happen.

Before the TKI era, surgery was the only curative and effective treatment for GISTs. Recent studies have proved that adjuvant imatinib can delay recurrence and improve survival in selected patients with high-risk GIST. In patients with advanced or metastatic GIST, imatinib is the standard treatment, with surgery of residual masses being an option. Preoperative imatinib is an emerging and promising treatment of choice for patients with initially unresectable GIST. Such neoadjuvant therapy offers the chance of converting or reduction of the unresectable GIST into resectable diseases.

2.2 Surgery in relation to tumor location

2.2.1 Gastric GIST

The stomach is the most common tumor location for GISTs. Patients often present with GI bleeding or obstruction. Their diagnosis and are usually made by endoscopy and endoscopic ultrasound that identifies the intramural origin of the tumor. Biopsy occasionally may of help in the diagnosis of GIST. Small tumors are occasionally found during endoscopy for other indications and endoscopic resection when feasible may be indicated. Surgical intervention is necessary for gastric GIST not amenable to endoscopic resection and depends primarily on the location and size of the tumor within the stomach. As with all GISTs, the principle operative treatment is complete resection with negative margins. Special care should be taken to prevent potential tumor rupture by meticulously manipulating the tumor during the operation. The location of GIST in the lower third of the stomach may be a favorable factor, however, the exact significance of different tumor sites for prognosis of gastric GISTs needs to be further clarified. Most would advocate a distal gastrectomy with Billroth I or II reconstruction in tumor of considerable sizes. Proximal lesions on the lesser curve or localization close to the gastroesophageal junction may be difficult to surgical resection, especially in tumors with large-sized or wide base. In tumors that become adherent to adjacent structures, en bloc excision with omentectomy, splenectomy, or distal pancreatectomy may be indicated to ensure capsule integrity as well as R0 resection. Unlike gastric cancer, omentectomy or lymphadenectomy is not necessary unless the presence of involvement by intraoperative evaluation (Gervaz et al., 2009; Huang et al., 2010; Miettinen et al., 2005; Privette et al., 2008; Silberhumer et al., 2009).

2.2.2 Small intestinal GIST

The incidence of GIST originating from the small intestine is secondary to that of gastric GIST. Small intestinal GIST of duodenal origin is rare with the incidence of less than 5%. While a majority of patients present with bleeding, large tumors can lead to GI obstruction. The best modality for diagnosis of duodenal GIST is endoscopy. Similar to gastric GIST, the operation depends on the size and location of the primary tumor as well as distance from the ampulla. One recent study showed that type of operation was not correlated to operative risk and disease recurrence, limited operation rather than more radical pancreaticoduodenectomy should be attempted whenever possible for duodenal GIST without involvement of papilla of Vater to preserve more pancreas parenchyma, duodenum, and common bile duct (Chung et al., 2010; Miettinen et al., 2003; Yang et al., 2009).

Intestinal GIST other than duodenal origin can be difficult to diagnose. CT or capsule endoscopy are optional tools in diagnosis. In this disease entity, there is a higher proportion of lesions found in the jejunum than the ileum. The same surgical principles of negative

margins and prevention of tumor rupture apply equally to intestinal GISTs, regardless of the tumor location. This is best accomplished by segmental small bowel resection with primary anastomosis. As mentioned earlier, intestinal location was an independent predictor of recurrence and poor prognosis (Dematteo et al., 2008; Miettinen et al., 2005, 2006).

2.2.3 Colorectal GIST

Reports regarding GIST of colon and rectal origin have been limited in number due to its rarity. Surgical consideration of these colorectal GISTs is the same as that mentioned in GIST of other locations and may include local excision or radical resection. However, for rectal GISTs, its rarity makes it difficult to assess the role of the extension of the surgical resection of the tumor. Colonic GISTs are typically treated with segmental resection and primary anastomosis. Unlike colon cancer, formal lymphadenectomy is not necessary unless obvious nodal involvement is present. Resection of rectal GISTs is more difficult and is often associated with increased rate of complication. A formal mesorectal excision is unnecessary and often leads to increased morbidity. One study retrospectively analyzed clinical characteristics of surgically treated gastrointestinal stromal tumors of the colon and rectum and demonstrates that the majority of colorectal GISTs are high-risk. Patients with high-risk colorectal GISTs have a significant likelihood of developing metastases that is associated with poor prognosis. These patients need to be closely followed for an extended period and should be considered for adjuvant therapy with tyrosine kinase inhibitors. Since rectal GISTs are often advanced, the role of neoadjuvant Imatinib in rectal GIST has also been evaluated. It has been proposed that preoperative Imatinib therapy can contribute to reduction of the size in large rectal GISTs, improving the chances of successful radical surgery and therefore decreasing the risk of morbidity and mortality (Hassan et al., 2006; Hou et al., 2009; Machlenkin et al., 2010; Mandalà et al., 2007).

2.3 Endoscopic resection

Small GIST lesions are often found incidentally during endoscopy or laparotomy for specific indications. The diagnosis of GIST is often made after endoscopic ultrasound (EUS) referral for the evaluation of submucosal lesions. Its diagnostic yield can vary. It can be as low as 68.7% without tissue acquisition and as high as 84% with tissue acquisition (Scarpa et al., 2008). When GISTs are accidentally found during routine endoscopy, decision-making may be difficult because of the lack of data regarding biology behavior, invasiveness and metastatic potential of these tumors. Endoscopic features are unable to predict tumor behavior reliably. Once a diagnosis of GIST is confirmed and metastatic disease excluded, subsequent surgical intervention should take into consideration the size and location of the tumor. Treatment of small lesions incidentally found during endoscopy, imaging studies, or surgical exploration for other indications remains controversial. It is agreed that small tumors identified at the time of laparotomy or laparoscopy be removed whenever possible without increasing the risk of tumor rupture or risk of complication such as perforation or hemorrhage. A reasonable strategy can include close follow-up and surveillance in 6–12 months. For lesions more than 2 cm in size, surgical resection is the principle treatment and is the only curative treatment of choice. Endoscopic ligation and resection shows promise as a safe and feasible technique to treat small EUS-suspected gastric GISTs (Casali et al., 2010).

2.4 Minimally invasive surgery

The role of laparoscopic approaches in the surgical management of GIST has gained increasing popularity due to the technical advantage of complete resections in a minimally invasive manner. With appropriate handling of the tumor, laparoscopic surgery has been proved safe and effective in selected patients. Laparoscopy is particularly being used with increasing frequency for GIST originating from the stomach. Laparoscopic resection of gastric GISTs appears technically feasible and is associated with favorable outcomes. It is generally agreed that tumors up to 5 cm can be safely approached laparoscopically. It is also important to follow the same surgical principles of laparotomy when performing laparoscopic GIST resections, including complete R0 resection with free margins, avoidance of accidental tumor rupture intraoperatively, and use of a retrieval bag to prevent spillage and seeding of tumor cells into the peritoneum. While there has been no prospective randomized trial directly comparing laparoscopic and open approaches for gastric GIST, several retrospective series have demonstrated that the laparoscopic approach is associated with low morbidity, mortality, and satisfactory oncologic results. Laparoscopic surgery can be conducted in combination with intra-operative endoscopic assistances according to tumor size and location. Innovative techniques in laparoscopic surgery, including single-port laparoscopic surgery or incisionless surgical approach such as natural orifice transluminal endoscopic surgery (NOTES), have been applied in clinical practice in recent years. These surgical approaches have been reported to be associated with significantly fewer complications, reduced pain, faster recovery, and improved cosmesis compared with traditional open or laparoscopic approaches. It is likely that these newly developed minimally invasive surgery will be applied to miscellaneous surgical diseases, including GIST, in the near future (Catena et al., 2008; Choi et al., 2007; Horgan et al., 2011; Karakousis et al., 2011; Kingham & DeMatteo, 2009; Novitsky et al., 2006; Otani et al., 2006; Privette et al., 2008; Sasaki et al., 2010; Sexton et al., 2008; Woodall et al., 2009).

2.5 Adjuvant therapy

The success of IM in the treatment of metastatic GIST and the significant risk of recurrence of GIST in the pre-TKI era with surgery alone stimulated investigation of complete surgical resection in combination with TKI treatment as adjuvant intent. The efficacy of standard dose adjuvant imatinib mesylate (400 mg/day) has been evaluated in clinical trials. The American College of Surgeons Oncology Group (ACOSOG) sponsored two randomized, double-blind, placebo-controlled studies evaluating adjuvant imatinib in completely resected, localized primary GIST. Based on the positive results from these clinical trials, the US FDA approved 400 mg/day imatinib mesylate tablets for oral use for the adjuvant treatment of adult patients following complete gross resection of gastrointestinal stromal tumor (GIST) with tumors larger than 3 cm on December 19, 2008 (DeMatteo et al., 2009). Several studies reported similar outcomes demonstrating that imatinib used in the adjuvant therapy improved recurrence-free survival significantly (Essat & Cooper, 2011). The duration of adjuvant therapy remains controversial and was not specified in the Food and Drug Administration approval since the rate of recurrences in the imatinib mesylate treated group seemed to increase at 18 months from surgery which corresponded to 6 months after discontinuing the study drug. Similar times to progression were also noted after treatment interruptions in patients with metastatic disease. New trials for evaluation of optimal duration for adjuvant therapy are currently undergoing that includes two large European

trials aimed to clarify and evaluate the adjuvant duration: the Scandinavian Sarcoma Group (SSG) and the German Arbeitsgemeinschaft Internistische Onkologie (AIO) are jointly conducting a randomized, phase III trial (SSGXVIII/AIO) to evaluate 1 year versus 3 years of adjuvant imatinib mesylate, in high-risk GIST patients. The European Organization for Research and Treatment of Cancer (EORTC) 62024 study compares adjuvant therapy for 2 years with observation (Blay et al., 2007).

3. Recurrent GIST

Surgery is the mainstay of treatment for primary resectable GISTs when there is no evidence of metastases or advanced diseases. Although surgery is the only known potentially curative treatment for primary resectable or marginally resectable GISTs, 40–90% of surgically treated patients experience disease recurrence despite complete surgical resection according to the literature. Five-year recurrence-free and disease-free survival rates of 49% and 65%, respectively, have been reported for patients undergoing complete resection. Prevention or identification of risk factors associated with increased rate of recurrence thus become one important issue in the surgical treatment of GIST (Hassan et al., 2008; Rossi et al., 2003; Singer et al., 2002).

Although it is clear that rupture of GIST tumor at operation carries a high risk of tumor recurrence, appropriate surgical management options and the associated outcomes in patients with a ruptured GIST is not clarified. One recent report showed that the risk of recurrence approaches nearly 100% in patients with GIST that ruptured into the abdominal cavity before or during operation and the associated recurrence-free survival was less than 1 year, emphasizing the necessity of adjuvant therapy in these group of high-risk patient. Another study investigates long-term follow-up of the imatinib mesylate treatment in patients with GIST would experience tumor recurrence or metastasis after radical resection and found that the imatinib mesylate treatment could prolong the survival of the patients who have recurrent GIST after the radical surgery (Zhu et al., 2010).

4. Advanced/metastatic GIST and targeted therapy

Initial metastasis can be present in about 15–50% of GIST patients (DeMatteo et al., 2000; Roberts & Eisenberg., 2002; Shinomura et al., 2005). Treatment guidelines for GIST all recognize imatinib as the standard of care for patients with advanced, unresectable, and metastatic GISTs. Imatinib mesylate has been proven to play a significant role in the treatment of advanced/metastatic GIST and has been considered the standard first line therapy in this patient group. Prognosis of patients with advanced disease improved significantly following the approval of imatinib mesylate in 2001 by FDA for this indication. The overall survival can be improved significantly in patients with advanced GIST. Patients who develop resistance to or are intolerant of first-line imatinib mesylate are commonly treated with sunitinib malate, a multi-targeted tyrosine kinase inhibitor approved by the FDA in January 2006 as second-line therapy in this disease (Blanke et al., 2008; Casali et al., 2009; Demetri et al., 2000, 2002, 2006; Nishida et al., 2008).

In the majority of patients with advanced, unresectable or metastatic GIST receiving imatinib treatment shows variable response. Response to treatment can be evaluated on CT scan as reduction of the tumor size or as decreased FDG uptake on a PET/CT scan. In the minority of cases, tumor progression develops within the first 6 months in spite of

treatment, referred to as primary resistance, and in a subset of patients, the tumor may remain unchanged despite treatment. Secondary resistance is defined as situations when patients with initially good response or stable disease develop tumor progression after 12-36 months of treatment. Molecular mechanisms responsible for primary resistance differ from those of secondary resistance. *KIT* exon 9 and *PDGFRA* mutations more commonly are associated with primary imatinib resistance when compared to *KIT* exon 11 mutations. Secondary resistance is most commonly related to secondary mutations in the *KIT* kinase domain (Gajiwala et al., 2009; Heinrich et al., 2006, 2008; Liegl et al., 2008).

The success and significant effects of imatinib mesylate and sunitinib malate in their clinical application have led to miscellaneous investigations on a wide variety of new TKI for their potential roles in the treatment of GIST, including Nilotinib, Sorafenib, Masitinib (AB1010), Vatalanib (PTK787/ZK 222584). The majority of these multi-targeted tyrosine kinase inhibitors are designed as novel or third-line agents for treatment in imatinib-resistant GIST or imatinib and sunitinib-resistant GIST. If proved of their efficacy against GIST in currently clinical trials, these novel TKI agents will bring about a new TKI era and will definitely hold promise for future targeted therapy in GISTs (Guo et al., 2007; Joensuu et al., 2011; Le Cesne et al., 2010; Prenen et al., 2006; Sawaki et al., 2011).

5. Neoadjuvant therapy

Neoadjuvant, or downsizing treatment, defined as surgical resection for patients with previously unresectable GISTs after treatment with imatinib or other TKI, is indicated for reduction of tumor volume and for eradicating potential microscopically metastatic tumor cells prior to surgery. The rationale for neoadjuvant imatinib is based on the elimination of microscopic and metastatic disease, with additional benefits of preoperative cytoreduction of tumors, facilitating complete resection and function-sparing surgical procedures, offering selected patients with initially unresectable diseases chances of resectability and operability. In addition, if a significant response of tumor to such neoadjuvant therapy can be achieved, the risk of tumor rupture during surgical manipulation, and thus the potential of post-operative recurrence, can also be reduced theoretically.

Neoadjuvant therapy should be individualized and is indicated for patients with large tumors where resection would cause undue morbidity or functional deficit, and small tumors in difficult to treat areas such as the gastroesophageal junction or low rectum. Retrospective reports and prospective investigations evaluating the efficacy of imatinib in the neoadjuvant therapy for GIST have demonstrated promising results in terms of cytoreduction and facilitating conservative, organ-preserving surgery, as well as survival and prognostic benefits (Abhyankar & Nair, 2008; Andtbacka et al., 2007; Blesius et al., 2011; DeMatteo et al., 2007; Eisenberg et al., 2009; Fiore et al., 2009; Sjölund et al., 2010).

As a general, neoadjuvant imatinib should be considered if surgery could result in significant morbidity or loss of organ function, and subsequent surgery may be considered 4 to 12 months later after maximal tumor size reduction. Similar to adjuvant therapy, it remains relatively controversial as to the optimal duration of neoadjuvant therapy as well as the optimal timing of surgical intervention in this particular group of GIST patients. It is proposed that the timing of the surgical procedure can be critical in that resection should be conducted upon maximal response of the tumor to neoadjuvant imatinib before the development of tumor progression. The majority of patients with advanced GIST reach a response within 6 months of neoadjuvant therapy, with a median time to response of 3

months. In patients with GIST responding to neoadjuvant therapy, the time interval before potential resection should not be less than 3 months. Patients can be followed closely with serial CT scans to assess and document progressive reduction of the tumor size (Gold & DeMatteo, 2006, 2007).

PET scan is of importance in the neoadjuvant therapy for GIST in its role as an early and sensitive imaging tool for evaluation of the response of GIST to neoadjuvant treatment in the clinically setting. PET scans can help document tumor activity if the biologic effect of imitinab is unclear clinically. Response of the tumor can be detected and determined by PET after a week or less of neoadjuvant treatment and precedes CT response by several weeks. This could be of great value in patients with unresectable and advanced GIST, for which timely and accurate assessment of tumor response to adjuvant treatment is imperative to subsequent surgical strategies (Bumming et al., 2003; Dimitrakopoulou-Strauss et al., 2007; Katz et al., 2004; Lo et al., 2005; Loughrey et al., 2005; Raut & DeMatteo, 2008; Rutkowski et al., 2006; Shah et al., 2005; Stroobants et al., 2003; Yoon & Tanabe, 2007).

It may be a matter of time when neoadjuvant therapy, like adjuvant therapy, becomes standard treatment of choice in selected GIST patients with advanced or initially unresectable diseases if the optimal duration of treatment in both adjuvant and neoadjuvant therapy can be documented and substantiated.

6. Conclusion

The management of human malignancies, including GIST, requires a multidisciplinary team approach. In primary resectable GIST, the standard treatment remains surgery, which takes into consideration tumor location and tumor size in preoperative assessment. Innovation and evolvement in surgical techniques in the treatment of GIST should always accompany the general surgical principle of complete resection with negative margin and meticulous manipulation of tumor without rupture. The success of targeted therapy with imatinib mesylate in the treatment of advanced/metastatic GIST has revolutionized the management of GIST: in addition to emerging clinical investigations evaluating the effects of novel tyrosine kinase inhibitors in GIST, the significant role of imatinib mesylate and other tyrosine kinase inhibitors in the adjuvant and neoadjuvant therapy in different GIST patient groups has been proved and substantiated. The importance of adjuvant as well as neoadjuvant therapy in the management of GIST will continue to be emphasized and verified. It is likely that future treatment in GIST will move toward individualized targeted therapy in combination with surgery in order to optimize clinical outcomes including improved survival, reduced risk of recurrence and better quality of life.

7. References

- Siegwart, R. (2001). Indirect Manipulation of a Sphere on a Flat Disk Using Force Information. *International Journal of Advanced Robotic Systems*, Vol.6, No.4, (December 2009), pp. 12-16, ISSN 1729-8806
- Abhyankar, SA. (2008). Highlighting the role of FDG PET scan in early response assessment of gastrointestinal stromal tumor treated with imatinib mesylate. *Clinical Nuclear Medicine*, Vol.33, No.3, (March 2008), pp. 213-214, ISSN 0363-9762

- Andtbacka, RH. (2007). Surgical resection of gastrointestinal stromal tumors after treatment with imatinib. *Annals of Surgery Oncology*, Vol.14, No.1, (January 2007), pp. 14–24, ISSN 1068-9265
- Blackstein, ME. (2006). Gastrointestinal stromal tumours: consensus statement on diagnosis and treatment. *Canadian Journal of Gastroenterology*, Vol.20, No.3, (March 2006), pp.157-163, ISSN 0835-7900
- Blanke, CD (2009). Biomarkers in GIST: partly ready for prime-time use. *Clinical Cancer Research*, Vol.15, No.18, (September 2009), pp. 5603-5605, ISSN 1078-0432
- Blanke, CD. (2008). Phase III randomized, intergroup trial assessing imatinib mesylate at two dose levels in patients with unresectable or metastatic gastrointestinal stromal tumors expressing the kit receptor tyrosine kinase: S0033. *Journal of Clinical Oncology*, Vol.16, No.4, (February 2008), pp. 626-632, ISSN 0732-183X
- Blay, JY. (2007). Prospective multicentric randomized phase III study of imatinib in patients with advanced gastrointestinal stromal tumors comparing interruption versus continuation of treatment beyond 1 year: the French Sarcoma Group. *Journal of Clinical Oncology*, Vol.25, No.9, (March 2007), pp. 1107-1113, ISSN 0732-183X
- Blay, P. (2004). Protein kinase C theta is highly expressed in gastrointestinal stromal tumors but not in other mesenchymal neoplasias. *Clinical Cancer Research*, Vol.10, No.12, (June 2004), pp. 4089–4095, ISSN 1078-0432
- Blesius, A. (2011). Neoadjuvant imatinib in patients with locally advanced non metastatic GIST in the prospective BFR14 trial. *BMC cancer*, Vol.15, No.11, (February 2011), pp. 72, ISSN 1471-2407
- Bumming, P. (2003). Neoadjuvant, adjuvant and palliative treatment of gastrointestinal stromal tumours (GIST) with imatinib: a centre-based study of 17 patients. *British Journal of Cancer*, Vol.89, No.3, (August 2003), pp. 460–464, ISSN 0007-0920
- Casali, PG. (2010). Gastrointestinal stromal tumours: ESMO clinical recommendations for diagnosis, treatment and follow-up. *Annals of Oncology*, Vol.21, Suppl.5, (May 2010), pp. 64–67, ISSN 0923-7534
- Catena, F. (2008). Laparoscopic treatment of gastric GIST: report of 21 cases and literature's review. *Journal of Gastrointestinal Surgery*, Vol.12, No.3, (March 2008), pp. 561–568, ISSN 1091-255X
- Chi, P. (2010). ETV1 is a lineage survival factor that cooperates with KIT in gastrointestinal
- Choi, SM. (2007). Laparoscopic wedge resection for gastric GIST: long-term follow- up results. *European Journal of Surgical Oncology*, Vol.33, No.4, (May 2007), pp. 444–447, ISSN 0748-7983
- Chung, JC. (2010). Surgery for gastrointestinal stromal tumors of the duodenum. *Annals of Surgical Oncology*, Vol.14, No.5, (May 2010), pp. 880-883, ISSN 1091-255X
- Corless, CL. (2004). Biology of gastrointestinal stromal tumors. *Journal of Clinical Oncology*, Vol.22, No.18, (September 2004) , pp. 3813-3825, ISSN 0732-183X
- Debiec-Rychter, M. (2004). Gastrointestinalstromal tumours (GISTs) negative for KIT (CD117 antigen) immunoreactivity. *Journal of Pathology*, Vol.202, No.4, (April 2004), pp. 430–438, ISSN 0022-3417
- DeMatteo, RP. (2000). Two hundred gastrointestinal stromal tumors: recurrence patterns and prognostic factors for survival. *Annals of Surgery*, Vol.231, No.1, (January 2000), pp. 51-58, ISSN 0003-4932

- DeMatteo, RP. (2007). Results of tyrosine kinase inhibitor therapy followed by surgical resection for metastatic gastrointestinal stromal tumor. *Annals of Surgery*, Vol.245, No.3, (March 2007), pp. 347–352, ISSN 0003-4932
- Dematteo, RP. (2008). Tumor mitotic rate, size, and location independently predict recurrence after resection of primary gastrointestinal stromal tumor (GIST). *Cancer*, Vol.112, No.3, (February 2008), pp. 608–615, ISSN 0008-543X
- Dematteo, RP. (2009). Adjuvant imatinib mesylate after resection of localised, primary gastrointestinal stromal tumour: a randomised, double-blind, placebo-controlled trial. *Lancet*, Vol.373, No.9669, (March 2009), pp. 1097-104, ISSN 0140-6736
- Demetri, GD. (2002). Efficacy and safety of imatinib mesylate in advanced gastrointestinal stromal tumors. *New England Journal of Medicine*, Vol.347, No.7, (August 2002), pp. 472-480, ISSN 0028-4793
- Demetri, GD. (2006). Efficacy and safety of sunitinib in patients with advanced gastrointestinal stromal tumour after failure of imatinib: a randomised controlled trial. *Lancet*, Vol.368, No.9544, (October 2006), pp. 1329-1338, ISSN 0140-6736
- Dimitrakopoulou-Strauss, A. (2007). 68 Ga-labeled bombesin studies in patients with gastrointestinal stromal tumors: comparison with 18F-FDG. *Journal of Nuclear Medicine*, Vol.48, No.8, (August 2007), pp. 1245-1250, ISSN 0161-5505
- Duensing, A. (2004). Protein kinase C theta (PKC θ) expression and constitutive activation in gastrointestinal stromal tumors (GISTs). *Cancer Research*, Vol.64, No.15, (August 2004), pp. 5127–5131, ISSN 0008-5472
- Eisenberg, BL. (2009). Phase II trial of neoadjuvant/adjuvant imatinib mesylate (IM) for advanced primary and metastatic/recurrent operable gastrointestinal stromal tumor (GIST): Early results of RTOG 0132/ACRIN 6665. *Journal of Surgical Oncology*, Vol.99, No.1, (January 2009), pp. 42-47, ISSN 0022-4790
- Espinosa, I. (2008). A novel monoclonal antibody against DOG1 is a sensitive and specific marker for gastrointestinal stromal tumors. *American Journal of Surgical Pathology*, Vol.32, No.2, (February 2008), pp. 210–218, ISSN 0147-5185
- Essat, M. (2011). Imatinib as adjuvant therapy for gastrointestinal stromal tumors- a systematic review. *International Journal of Cancer*, Vol.128, No.9, (May 2011), pp. 2202-2214, ISSN 0020-7136
- Fiore, M. (2009). Preoperative imatinib mesylate for unresectable or locally advanced primary gastrointestinal stromal tumors (GIST). *European Journal of Surgical Oncology*, Vol.35, No.7, (July 2009), pp. 739–745, ISSN 0748-7983
- Fletcher, CD. (2002). Diagnosis of gastrointestinal stromal tumors: A consensus approach. *Human Pathology*, Vol.33, No.5, (May 2002), pp. 459-465, ISSN 0046-8177
- Gajiwala, KS. (2009). KIT kinase mutants show unique mechanisms of drug resistance to imatinib and sunitinib in gastrointestinal stromal tumor patients. *Proceedings of the National Academy of Sciences of the United States of America*, Vol.106, No.5, (February 2009), pp. 1542–1547, ISSN 0027-8424
- Garcia dePolavieja, (2010). Gastrointestinal stromal tumours at present: An approach to burning questions. *Clinical Translational Oncology*, Vol.12, No.2, (February 2010), pp. 100–112, ISSN 1699-048X
- Gervaz, P. (2009). Surgical management of gastrointestinal stromal tumours. *British Journal of Surgery*, Vol.96, No.6, (February 2009), pp. 567–578, ISSN 0007-1323

- Gold, JS. (2006). Combined surgical and molecular therapy: the gastrointestinal stromal tumor model. *Annals of Surgery*, Vol.244, No.2, (August 2006), pp. 176-184, ISSN 0003-4932
- Gold, JS. (2007). Neoadjuvant therapy for gastrointestinal stromal tumor (GIST): racing against resistance. *Annals of Surgery Oncology*, Vol.14, No.4, (April 2007), pp. 1247-1248, ISSN 1068-9265
- Gold, JS. (2009). Development and validation of a prognostic nomogram for recurrence-free survival after complete surgical resection of localized primary gastrointestinal stromal tumour: a retrospective analysis. *Lancet Oncology*, Vol.10, No.11, (November 2009), pp.1045-1052, ISSN 1470-2045
- Guo, T. (2007). Sorafenib inhibits the imatinib-resistant KITT670I gatekeeper mutation in gastrointestinal stromal tumor. *Clinical Cancer Research*, Vol.13, No.16, (August 2007), pp. 4874-4881, ISSN 1078-0432
- Hassan, I. (2006). Clinical, pathologic, and immunohistochemical characteristics of gastrointestinal stromal tumors of the colon and rectum: implications for surgical management and adjuvant therapies. *Disease of Colon and Rectum*, Vol.49, No.5, (May 2006), pp. 609-615 ISSN 0012-3706
- Hassan, I. (2008). Surgically managed gastrointestinal stromal tumors: a comparative and prognostic analysis. *Annals of Surgery Oncology*, Vol. 15, No.1, (January 2008), pp. 52-59, ISSN 1068-9265
- Heinrich, MC. (2005). Gastric GI stromal tumors (GISTs): the role of surgery in the era of targeted therapy. *Journal of Surgical Oncology*, Vol.90, No.3, (June 2005), pp. 195-207, ISSN 0022-4790
- Heinrich, MC. (2006). Molecular correlates of imatinib resistance in gastrointestinal stromal tumors. *Journal of Clinical Oncology*, Vol.24, No.29, (October 2006), pp. 4764-4774, ISSN 0732-183X
- Heinrich, MC. (2008). Primary and secondary kinase genotypes correlate with the biological and clinical activity of sunitinib in imatinib-resistant gastrointestinal stromal tumor. *Journal of Clinical Oncology*, Vol.26, No.33, (November 2008), pp. 5352-5359, ISSN 0732-183X
- Hirota, S. (1998). Gain-of-function mutations of c-KIT in human gastrointestinal stromal tumors. *Science*, Vol.279, No.5350, (January 1998), pp. 577-580, ISSN 0036-8075
- Horgan, S. (2011). Clinical experience with a multifunctional, flexible surgery system for endolumenal, single-port, and NOTES procedures. *Surgical Endoscopy*, Vol 25, No.2, (February 2011), pp. 586-592, 0930-2794
- Hou, YY. (2009). Imatinib mesylate neoadjuvant treatment for rectal malignant gastrointestinal stromal tumor. *World Journal of Gastroenterology*, Vol.15, No.15, (April 2009), pp. 1910-1913, ISSN 1007-9327
- Hsu, KH. (2007a). Significance of CD44 expression in gastrointestinal stromal tumors in relation to disease progression and survival. *World Journal of Surgery*, Vol.31, No.7, (July 2007), pp. 1438-1444, ISSN 0364-2313
- Hsu, KH. (2007b). Tumor size is a major determinant of recurrence in patients with resectable gastrointestinal stromal tumor. *American Journal of Surgery*, Vol.194, No.2, (August 2007), pp. 148-152, ISSN 0002-9610
- Hsu, KH. (2010a). Clinical implication and mitotic effect of CD44 cleavage in relation to osteopontin/CD44 interaction and dysregulated cell cycle protein in

- gastrointestinal stromal tumor. *Annals of Surgery Oncology*, Vol.17, No.8, (August 2010), pp. 2199-2212, ISSN 1068-9265
- Hsu, KH. (2010b). Osteopontin expression is an independent adverse prognostic factor in resectable gastrointestinal stromal tumor and its interaction with CD44 promotes tumor proliferation. *Annals of Surgery Oncology*, Vol.17, No.11, (November 2010), pp. 3043-3052, ISSN 1068-9265
- Huang, H. (2010). Different sites and prognoses of gastrointestinal stromal tumors of the stomach- report of 187 cases. *World Journal of Surgery*, Vol.34, No.7, (July 2010), pp. 1523-1533, , ISSN 0364-2313
- Iesalnieks, I. (2005). Factors associated with disease progression in patients with gastrointestinal stromal tumors in the pre-imatinib era. *American Journal of Clinical Pathology*, Vol.124, No.5, (November 2005), pp. 740-748, ISSN 0002-9173
- Joensuu, H. (2008). Risk stratification of patients diagnosed with gastrointestinal stromal tumor. *Human Pathology*, Vol.39, No.10, (October 2008), pp. 1411-1419, ISSN 0046-8177
- Joensuu, H. (2011). Vatalanib for metastatic GIST resistant to imatinib-final results of a phase II study. *British Journal of Cancer*, Vol.104, No.11, (May 2011), pp. 1686-1690, ISSN 0007-0920
- Karakousis, GC. (2011). Laparoscopic Versus Open Gastric Resections for Primary Gastrointestinal Stromal Tumors (GISTs): A Size-Matched Comparison. *Annals of Surgical Oncology*, Vol.18, No.6, (June 2011), pp. 1599-1605, ISSN 1068-9265
- Katz, D. (2004). Neoadjuvant imatinib for unresectable gastrointestinal stromal tumor. *Anticancer Drugs*, Vol.15, No.6, (July 2004), pp. 599-602, ISSN 0959-4973
- Keun, PC. (2008). Prognostic stratification of high-risk gastrointestinal stromal tumors in the era of targeted therapy. *Annals of Surgery*, Vol.247, No.6, (June 2008), pp. 1011-1018, ISSN 0003-4932
- Kindblom, LG. (1998). Gastrointestinal pacemaker cell tumor (GIPACT). Gastrointestinal stromal tumors show phenotypic characteristics of the interstitial cells of Cajal. *American Journal of Pathology*, Vol.152, No.5, (May 1998), pp. 1259-1269, ISSN 0002-9440
- Kingham, TP. (2009). Multidisciplinary treatment of gastrointestinal stromal tumors. *Surgical Clinics of North America*, Vol.243, No.6, (February 2009), pp. 217-233, ISSN 0039-6109
- Kwon, SJ. (2001). Surgery and prognostic factors for gastric stromal tumor. *World Journal of Surgery*, Vol.25, No.3, (March 2001), pp. 290-295, ISSN 0364-2313
- Le Cesne, A. (2010). Phase II study of oral masitinib mesilate in imatinib-naïve patients with locally advanced or metastatic gastro-intestinal stromal tumour (GIST). *European Journal of Cancer*, Vol.46, No.8, (May 2010), pp. 1344-1351, ISSN 0959-8049
- Lee, HE. (2008). Characteristics of KIT negative gastrointestinal stromal tumours and diagnostic utility of protein kinase C theta immunostaining. *Journal of Clinical Pathology*, Vol.61, No.6, (June 2008), pp. 722-729, ISSN 0021-9746
- Liegl, B. (2008). Heterogeneity of kinase inhibitor resistance mechanisms in GIST. *Journal of Pathology*, Vol.216, No.1, (September 2008), pp. 64-74, ISSN 0022-3417
- Liegl, Bl. (2009). Monoclonal antibody DOG 1.1 shows higher sensitivity than KIT in the diagnosis of Gastrointestinal stromal tumors, including unusual subtypes. *American*

- Journal of Surgical Pathology*, Vol. 33, No.3, (March 2009), pp. 437–446, ISSN 0147-5185
- Lo, SS. (2005). Neoadjuvant imatinib in gastrointestinal stromal tumor of the rectum: report of a case. *Disease of Colon and Rectum*, Vol.48, No.6, (June 2005), pp. 1316-1319, ISSN 0012-3706
- Loughrey, MB. (2005). Gastrointestinal stromal tumour treated with neoadjuvant imatinib. *Journal of Clinical Pathology*, Vol.58, No.7, (July 2005), pp. 779–781, ISSN 0021-9746
- Machlenkin, S. (2010). The effect of neoadjuvant Imatinib therapy on rectal gastrointestinal stromal tumours outcome and survival. *Colorectal Disease*, (October 2010), doi: 10.1111/j.1463-1318.2010.02442.x. [Epub ahead of print]
- Mandalà, M. (2007). Neoadjuvant Imatinib in a locally advanced gastrointestinal stromal tumour (GIST) of the rectum: a rare case of two GISTs within a family without a familial GIST syndrome. *European Journal of Gastroenterology and Hepatology*, Vol .19, No.8, (August 2007), pp. 711-713, ISSN 0954-691X
- Mazur, MT. (1983). Gastric stromal tumors. Reappraisal of histogenesis. *American Journal of Surgical Pathology*, Vol.7, No.4, (September 1983), pp. 507-519. ISSN 0147-5185
- Medeiros, F. (2004). KIT-negative gastrointestinal stromal tumors: proof of concept and therapeutic implications. *American Journal of Surgical Pathology*, Vol.28, No.7, (July 2004), pp. 889–894, ISSN 0147-5185
- Miettinen, M. (2002). Pathology and diagnostic criteria of gastrointestinal stromal tumors (GISTs): A review. *European Journal of Cancer*, Vol.38, Suppl.5, (September 2002), pp.39-51, ISSN 0959-8049
- Miettinen, M. (2003). Gastrointestinal stromal tumors, intramural leiomyomas, and leiomyosarcomas in the duodenum: A clinicopathologic, immunohistochemical, and molecular genetic study of 167 cases. *American Journal of Surgical Pathology*, Vol.27, No.5, (May 2003), pp. 625–641, ISSN 0147-5185
- Miettinen, M. (2005). Gastrointestinal stromal tumors of the stomach: A clinicopathologic, immunohistochemical, and molecular genetic study of 1765 cases with long-term follow-up. *American Journal of Surgical Pathology*, Vol.29, No.1, (January 2005), pp. 52–68, ISSN 0147-5185
- Miettinen, M. (2006). Gastrointestinal stromal tumors of the jejunum and ileum: A clinicopathologic, immunohistochemical, and molecular genetic study of 906 cases before imatinib with long-term follow-up. *American Journal of Surgical Pathology*, Vol.30, No.4, (April 2006), pp. 477–489, ISSN 0147-5185
- Miettinen, M. (2009). DOG1 antibody in the differential diagnosis of gastrointestinal stromal tumors: a study of 1,840 cases. *American Journal of Surgical Pathology*, Vol.33, No.9, (September 2009), pp. 1401–1408, ISSN 0147-5185
- Nilsson, B. (2005). Gastrointestinal stromal tumors: the incidence, prevalence, clinical course, and prognostication in the preimatinib mesylate era—a population-based study in western Sweden. *Cancer*, Vol.103, No.4, (February 2005), pp. 821-829, ISSN 0008-543X
- Nishida, T. (2008). Clinical practice guidelines for gastrointestinal stromal tumor (GIST) in Japan: English version. *International Journal of Clinical Oncology*, Vol.26, No.4, (February 2008), pp. 416–430, ISSN 0732-183X

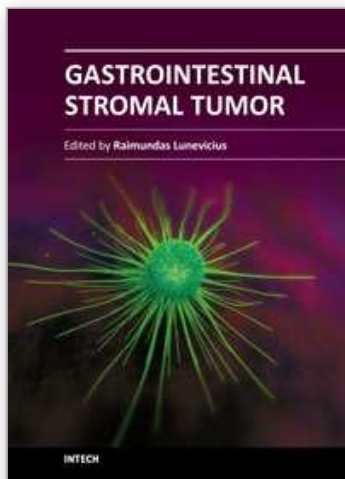
- Novitsky, YW. (2006). Long-term outcomes of laparoscopic resection of gastric gastrointestinal stromal tumors. *Annals of Surgery*, Vol.243, No.6, (June 2006), pp.:738-745, ISSN 0003-4932
- Otani, Y. (2006). Operative indications for relatively small (2-5 cm) gastrointestinal stromal tumor of the stomach based on analysis of 60 operated cases. *Surgery*, Vol.139, No.4, (April 2006), pp. 484-492, ISSN 0039-6060
- Parkkila, S. (2010). Carbonic anhydrase II. A novel biomarker for gastrointestinal stromal tumors. *Modern Pathology*, Vol.23, No.5, (May 2010), pp 743-750, ISSN 0893-3952
- Patel, S. (2011). Navigating Risk Stratification Systems for the Management of Patients With GIST. *Annals of Surgical Oncology*, Vol.18, No.6, (June 2011), pp. 1698-704, ISSN 1068-9265
- Prenen, H. (2006). Cellular uptake of the tyrosine kinase inhibitors imatinib and AMN107 in gastrointestinal stromal tumor cell lines. *Pharmacology*, Vol.77, No.1, (2006), pp. 11-16, ISSN 0031-7012
- Privette, A. (2008). Laparoscopic approaches to resection of suspected gastric gastrointestinal stromal tumors based on tumor location. *Surgical Endoscopy*, Vol.22, No.2, (February 2008), pp. 487-494, ISSN 0930-2794
- Raut, CP. (2008). Prognostic factors for primary GIST: Prime time for personalized therapy? *Annals of Surgery Oncology*, Vol.15, No.1, (January 2008), pp. 4-6, ISSN 1068-9265
- Roberts, PJ. (2002). Clinical presentation of gastrointestinal stromal tumors and treatment of operable disease. *European Journal of Cancer*, Vol.38, Suppl.5, (September 2002), pp. 37-38, ISSN 0959-8049
- Rossi, CR. (2003). Gastrointestinal stromal tumors: From a surgical to a molecular approach. *International Journal of Cancer*, Vol.107, No.2, (November 2003), pp. 171-176, ISSN 0020-7136
- Rubin, BP. (2001). KIT activation is a ubiquitous feature of gastrointestinal stromal tumors. *Cancer Research*, Vol.61, No.22, (November 2001), pp. 8118-8121, ISSN 0008-5472
- Rudolph, P. (1998). Immunophenotype, proliferation, DNA-ploidy, and biological behavior of gastrointestinal stromal tumors: a multivariate clinicopathological study. *Human Pathology*, Vol. 29, No.8, (August 1998), pp.791-800, ISSN 0046-8177
- Rutkowski, P. (2006). Surgical treatment of patients with initially inoperable and/or metastatic gastrointestinal stromal tumors (GIST) during therapy with imatinib mesylate. *Journal of Surgical Oncology*, Vol.93, No.4, (March 2006), pp. 304-311, ISSN. 0022-4790
- Sasaki, A. (2010). Tailored laparoscopic resection for suspected gastric gastrointestinal stromal tumors. *Surgery*, Vol.147, No.4, (April 2010), pp. 516-520, ISSN 0039-6060
- Sawaki, A. (2011). Phase 2 study of nilotinib as third-line therapy for patients with gastrointestinal stromal tumor. *Cancer*, (March 2011), doi: 10.1002/cncr.26120. [Epub ahead of print], ISSN 0008-543X
- Scarpa, M. (2008). A systematic review on the clinical diagnosis of gastrointestinal stromal tumors. *Journal of Surgical Oncology*, Vol.98. No.5, (October 2008), pp. 384-392, ISSN 0022-4790
- Sexton, JA, (2008). Laparoscopic gastric resection for gastrointestinal stromal tumors. *Surgical Endoscopy*, Vol.22, No.12, (December 2008), pp.:2583-2587, ISSN 0930-2794

- Shah, JN. (2005). Neoadjuvant therapy with imatinib mesylate for locally advanced GI stromal tumor. *Gastrointestinal Endoscopy*, Vol.61, No.4, (April 2005), pp. 625-627, ISSN 0016-5107
- Shinomura, Y. (2005). Pathophysiology, diagnosis, and treatment of gastrointestinal stromal tumors. *Journal of Gastroenterology*, Vol.40, No.8, (August 2005), pp. 775-780, ISSN 0944-1174
- Silberhumer, GR. (2009). Surgery for gastrointestinal stromal tumors of the stomach. *Journal of Gastrointestinal Surgery*, Vol.13, No.7, (July 2009), pp. 1213-1219, ISSN 1091-255X
- Singer, S. (2002). Prognostic value of KIT mutation type, mitotic activity, and histologic subtype in gastrointestinal stromal tumors. *Journal of Clinical Oncology*, Vol.20, No.18, (September 2002), pp. 3898-3905, ISSN 0732-183X
- Sjölund, K. (2010). Downsizing treatment with tyrosine kinase inhibitors in patients with advanced gastrointestinal stromal tumors improved resectability. *World Journal of Surgery*, Vol.34, No.9, (September 2010), pp. 2090-2097, ISSN 0364-2313
- Stroobants, S. (2003). ¹⁸FDG-Positron emission tomography for the early prediction of response in advanced soft tissue sarcoma treated with imatinib mesylate (Glivec). *European Journal of Cancer*, Vol. 39, No. 14, (September 2003), pp. 2012-2020, ISSN 0959-8049
- Van den Abbeele, AD. (2008). The lessons of GIST--PET and PET-CT- a new paradigm for imaging. *The Oncologist*, Vol.13m Suppl.2, (April 2008), pp. 8-13, ISSN 1083-7159
- Verweij, J. (2004). Progression-free survival in gastrointestinal stromal tumours with high-dose imatinib: randomised trial. *Lancet*, Vol.364, No.9440, (October 2004), pp. 1127-1134, ISSN 0140-6736
- West RB, Corless CL, Chen X et al (2004) The novel marker, DOG1, is expressed ubiquitously in gastrointestinal stromal tumors irrespective of KIT or PDGFRA mutation status. *Am J Pathol* 165(1):107-113
- West, RB. (2004). The novel marker, DOG1, is expressed ubiquitously in gastrointestinal stromal tumors irrespective of KIT or PDGFRA mutation status. *American Journal of Pathology*, Vol.165, No.1, (July 2004), pp. 107-113, ISSN 0002-9440
- Winer, JH. (2011). Management of recurrent gastrointestinal stromal tumors. *Journal of Surgical Oncology*, (February 2011), doi: 10.1002/jso.21890. [Epub ahead of print], ISSN 0022-4790
- Woodall, CE, 3rd. (2009). An evaluation of 2537 gastrointestinal stromal tumors for a proposed clinical staging system. *Archives of Surgery*, Vol.144, No.7, (July 2009), pp. 670-678, ISSN 0004-0010
- Yan, H. (2003). Prognostic assessment of gastrointestinal stromal tumor. *American Journal of Clinical Oncology*, Vol.26, No.3, (June 2003), pp. 221-228, ISSN 0277-3732
- Yang, WL. (2009). Duodenal gastrointestinal stromal tumor: Clinical, pathologic, immunohistochemical characteristics, and surgical prognosis. *Journal of Surgical Oncology*, Vol.100, No.7, (December 2009), pp. 606-610, ISSN 0022-4790
- Yoon, SS. (2007). Should surgical resection be combined with imatinib therapy for locally advanced or metastatic gastrointestinal stromal tumors? *Annals of Surgery Oncology*, Vol.14, No.6, (June 2007), pp. 1784-1786, ISSN 1068-9265

Zhu, J. (2010). A long-term follow-up of the imatinib mesylate treatment for the patients with recurrent GIST- the liver metastasis and the outcome. *BMC cancer*, Vol.13, No.10, (May 2010), pp. 199, ISSN 1471-2407

IntechOpen

IntechOpen



Gastrointestinal Stromal Tumor

Edited by Prof. Raimundas Lunevicius

ISBN 978-953-51-0580-0

Hard cover, 120 pages

Publisher InTech

Published online 27, April, 2012

Published in print edition April, 2012

Almost 30 years have gone by since the postulation that GISTs derive from mesenchymal stem elements, and only 15 years have gone by since the definitive detection of origin of GISTs. Research in the last decade was more focused upon the justification of imatinib mezylate therapy in GISTs and clarification why a secondary resistance that occurred during the kinase inhibitors therapy. The era of therapy for GISTs, targeting the primary activating mutations in the KIT proto-oncogene; is being proclaimed as bringing the message of special importance to the pathologist role in multidisciplinary team that are responsible for treating patients with locally advanced or metastatic GIST. This is the first conclusive message forthcoming from this book. On the other hand, the book provides summarised and case-based knowledge on current management of gastrointestinal and extragastrointestinal stromal tumours. We hope that this book may be considered as a worthwhile timely addition to clinical science dissemination, medical education, further basic and clinical research.

How to reference

In order to correctly reference this scholarly work, feel free to copy and paste the following:

Kai-Hsi Hsu (2012). Treatment Options for Gastrointestinal Stromal Tumors, Gastrointestinal Stromal Tumor, Prof. Raimundas Lunevicius (Ed.), ISBN: 978-953-51-0580-0, InTech, Available from:
<http://www.intechopen.com/books/gastrointestinal-stromal-tumor/treatment-options-for-gastrointestinal-stromal-tumors>

INTECH
open science | open minds

InTech Europe

University Campus STeP Ri
Slavka Krautzeka 83/A
51000 Rijeka, Croatia
Phone: +385 (51) 770 447
Fax: +385 (51) 686 166
www.intechopen.com

InTech China

Unit 405, Office Block, Hotel Equatorial Shanghai
No.65, Yan An Road (West), Shanghai, 200040, China
中国上海市延安西路65号上海国际贵都大饭店办公楼405单元
Phone: +86-21-62489820
Fax: +86-21-62489821

© 2012 The Author(s). Licensee IntechOpen. This is an open access article distributed under the terms of the [Creative Commons Attribution 3.0 License](https://creativecommons.org/licenses/by/3.0/), which permits unrestricted use, distribution, and reproduction in any medium, provided the original work is properly cited.

IntechOpen

IntechOpen