

# We are IntechOpen, the world's leading publisher of Open Access books Built by scientists, for scientists

6,900

Open access books available

186,000

International authors and editors

200M

Downloads

Our authors are among the

154

Countries delivered to

TOP 1%

most cited scientists

12.2%

Contributors from top 500 universities



WEB OF SCIENCE™

Selection of our books indexed in the Book Citation Index  
in Web of Science™ Core Collection (BKCI)

Interested in publishing with us?  
Contact [book.department@intechopen.com](mailto:book.department@intechopen.com)

Numbers displayed above are based on latest data collected.  
For more information visit [www.intechopen.com](http://www.intechopen.com)



# Renal Angiotensinogen Gene Expression and Tubular Atrophy in Diabetic Nephropathy

Brice E. T. Nouthé<sup>1</sup>, Maya Saleh<sup>2</sup>, Shao-Ling Zhang<sup>1</sup> and John S. D. Chan<sup>1,\*</sup>

<sup>1</sup>*Université de Montréal, Centre de Recherche du Centre Hospitalier de l'Université de Montréal (CRCHUM), Hôtel-Dieu Hospital, Pavillon Masson, Montreal, QC*

<sup>2</sup>*McGill University, Department of Medicine, Centre for the Study of Host Resistance and Complex Trait Group, Montreal, QC Canada*

## 1. Introduction

The growing incidence of diabetes mellitus, with predicted rises in prevalence from 285 to 380 million cases in 2025, then 438 million by 2030, is a major public health burden in both developing and developed countries. Type 1 and type 2 diabetes increase the risk of microvascular complications, which cause significant morbidity and mortality. Diabetic nephropathy (DN) and retinopathy represent the major causes of end-stage renal disease and blindness (1-2) in developed countries. DN is associated with an increased risk of hypertension, adverse cardiovascular events (3), chronic kidney diseases and haemodialysis (4). Efforts are therefore being made to find ways of preventing and/or slowing down the progression of DN worldwide.

DN is initiated by glomerular changes, namely hypertrophy, then thickening of the basement membrane with subsequent expansion of the mesangial matrix and glomerulosclerosis (5). This is associated not only with microalbuminuria, an early clinically detectable lesion, but also with tubulointerstitial fibrosis and tubular atrophy (5-6). Oxidative stress, hyperglycemia and renin-angiotensin system (RAS) dysfunction have been linked to the development of these lesions (5-6). Although albuminuria is a useful clinical marker, tubulointerstitial fibrosis and tubular atrophy represent a better predictor of nephropathy progression because of their close association with declining renal function (5). Many randomized controlled trials have shown the efficacy of optimal glycemic control and RAS blockade in the primary and secondary prevention of DN (4, 7-9). The former is easily understood, as decreased “glucotoxicity” reduces end-organ damage. However, the mechanisms underlying the protective action of RAS inhibition, notably angiotensin II (Ang II) receptor blockade, are not well understood. In this review, we present the recent results of studies aiming to understand the consequences of RAS blockade at the molecular level, with an emphasis on tubular lesions in DN.

---

\* Corresponding Author

## 2. The renin-angiotensin system in diabetic nephropathy

### 2.1 Clinical findings on the implications of RAS blockade in diabetic nephropathy

The benefits of RAS inhibition on end-organ protection in diabetic patients are well established. One of the early clinical trials on diabetic patients was performed with captopril, an angiotensin-converting enzyme inhibitor (ACE-I), and showed a reduction in the risks of death, dialysis and transplantation (10). Other trials initially used monotherapy with ACE-I, but also angiotensin receptor blockers (ARB) (11-12). Dual blockade was proposed after one of the largest clinical trials, the Candesartan And Lisinopril Microalbuminuria (CALM) Study, showed reduced albuminuria with dual therapy compared to monotherapy (13). Further clinical trials with larger sample sizes, however, have failed to confirm the superiority of dual RAS blockade compared to monotherapy; multicentric clinical trials are ongoing to resolve this issue (14).

### 2.2 Background on the roles of angiotensin II in the kidney

Despite controversies over the efficacy of dual or simple RAS blockade, the importance of Ang II in diabetic nephropathy development is well accepted. Ang II, an octapeptide discovered in the 1930s in the United States and characterized in Switzerland, was initially named for its first-known function: contraction of blood vessels (15). It is the most powerful biologically active peptide of the RAS, with vasoconstriction but also nonhemodynamic effects, such as electrolyte reabsorption, renal hypertrophy and tubular apoptosis in the kidneys (15).

#### 2.2.1 Receptors

It is well established that Ang II mediates its effects mainly via binding to two G protein-coupled receptors: AT<sub>1</sub>R (which has 2 subtypes in rodents, namely AT<sub>1a</sub> and AT<sub>1b</sub>) and AT<sub>2</sub>R. AT<sub>1</sub>R, a seven-transmembrane domain receptor, is the main known mediator of Ang II actions (16); its action is summarized in **Table 1**. Ang II stimulation leads to upregulation of AT<sub>1</sub>R in the tubular compartment but downregulation of the same receptors in the glomerular compartment (17). The role of AT<sub>2</sub>R in kidneys is still not fully understood: upon stimulation by Ang II, it can counteract the effects of AT<sub>1</sub>R (18) but also activate inflammation (cf **Table 1**). In animal models of kidney damage, de novo expression of AT<sub>2</sub>R in glomeruli and vessels was induced by Ang II together with upregulation of AT<sub>2</sub>R in tubular cells (19).

Recent studies have shown the importance of 2 other receptors, the Ang1-7 or Mas receptors and the AT<sub>4</sub> receptor (20). The latter is still under investigation and has been proven to be linked to memory. However, it is also present in vessels and kidneys (proximal and distal tubules); it increases intracellular Ca<sup>2+</sup> levels and activates Erk and MAPK signalling (21).

#### 2.2.2 Actions

Ang II stimulates glomerular cell proliferation and causes accumulation of extracellular matrix material by stimulating transforming growth factor  $\beta_1$  (TGF- $\beta_1$ ), which leads to increased protein synthesis. TGF- $\beta_1$  decreases protein degradation by stimulating matrix metalloproteinases, mainly MMP-2, but also plasminogen activators inhibitor-1 (PAI-1) (22-23).

AT <sub>1</sub> R		AT <sub>2</sub> R		Mas receptors	
Activation	Inhibition	Activation	Inhibition	Activation	Inhibition
Phospholipase A2	Adenyl	iNOs/L-	PKC	p38MAPK,	TGF-β <sub>1</sub>
Phospholipase C	cyclase	arginine/O <sub>2</sub>	(MAPK)	SHIP-1 (PI3K)	
Jak/STAT		+NADPH		Erk 1/2	
ITP		(NO&cGMP)		Bradykinines	
Ca <sup>2+</sup>		NF-kappa B		COX	
p21ras, C-Src				(Prostaglandins),	
PKC (MAPK&TGF-β <sub>1</sub> )				NO	
NADPH (ROS)					

Table 1. Signalling pathways stimulated by AT<sub>1</sub>, AT<sub>2</sub> and Mas receptors

It has been demonstrated that high glucose, together with Ang II, is involved in tubular lesions seen in DN (5, 24). Indeed, high glucose and Ang II enhance angiotensinogen (Agt, the sole precursor of all angiotensins) gene expression, both in vitro in rat immortalized renal proximal tubular cells (iRPTC) (25, 26) and in vivo in streptozotocin-treated mice (a model of diabetic mice) proximal tubules (5, 24). This turns into a vicious circle, increasing tubular atrophy, as Agt is the sole substrate of the RAS and is used for synthesis of Ang II.

2.3 From angiotensinogen to angiotensin II

The importance of the systemic RAS in blood pressure control and sodium homeostasis has been well accepted and Ang II has been recognized as a cardinal parameter in the development of both hypertension and kidney injury (5, 13, 15, 27). Overactivation of AT<sub>1</sub> R by Ang II therefore represents a target for treatment, but as Ang II has many other paracrine effects (induction of inflammation, mitogenesis, cell growth, apoptosis, differentiation, migration, etc.), current therapies are not sufficient to reverse the consequences of Ang II hyperaction. Of note, local RAS have been unravelled in some organs, notably the kidneys, with luminal fluid levels of Ang II being at least 1,000-fold higher than in the plasma (28). This local RAS could also play an important role in sodium retention and blood pressure regulation and hypertension, representing both a cause and a consequence of kidney injury. Complex interactions between diabetes and hypertension due to similar etiologies of both conditions, together with the stimulating effect of hyperglycemia on Ang II production in vitro, point to an important role for local RAS in DN.

2.3.1 Synthesis and degradation of angiotensin II

The classic components of the RAS are all found in renal proximal tubules, including Agt and the enzymes (prorenin/renin, ACE, angiotensin-converting enzyme 2 (Ace2), aminopeptidases and carboxy peptidases). Upon cleavage of the prorenin into a proteolytic enzyme, renin will cleave Agt into a decapeptide: angiotensin I (Ang I). Then the dipeptidyl peptidase ACE will remove 2 amino acids from the latter and generate Ang II. Ang II is further metabolized into smaller fragments, such as Ang 1-7 and Ang III, Ang IV and Ang V, by various peptidases. Among those peptidases, Ace2 is a human homologue to ACE (42% similarity) that was discovered in 2000; it cleaves Ang I into Ang 1-9 / Ang II to Ang 1-7, both having hemodynamic properties (29). While ACE is present in most tissues, Ace2 is specifically expressed in the kidney, and less in the testes and heart ,with neither ARB nor

ACE-I, which can inhibit its activities (29). Ace2 levels in glomerules and proximal tubules are decreased in patients with chronic kidney disease and DN (30).

The following diagram illustrates the pathway for the synthesis and degradation of Ang II.

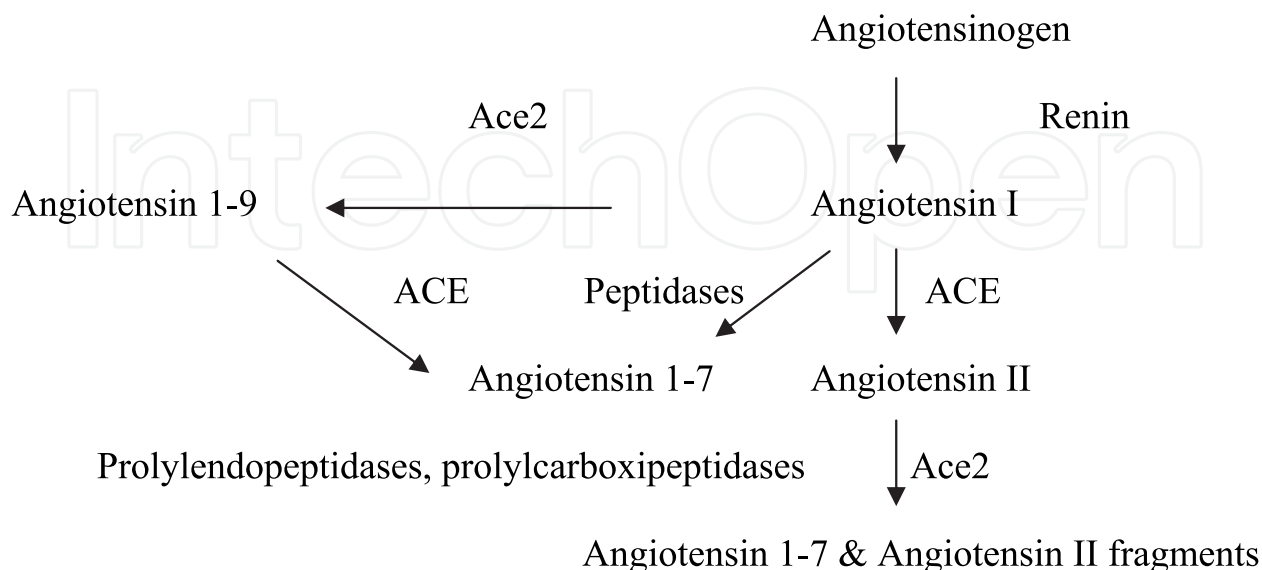


Fig. 1. Synthesis and degradation of Ang II

When Ace2 null mice were bred with the Akita model of type 1 diabetes, the obtained Ace2(-/y) Ins2(WT/C96Y) mice exhibited increased mesangial matrix scores, urinary albumin excretion rates and glomerular basement membrane thicknesses compared to Ace2(+/-y)Ins2(WT/C96Y) with the same blood glucose levels (31). This highlights once more the role of RAS in the development of kidney injury in cases of chronic hyperglycemia.

### 2.3.2 Importance of angiotensinogen in diabetic nephropathy

Our laboratory has previously demonstrated that both ARB and ACE-I block Agt gene expression and induction of hypertrophy stimulated by high glucose levels in immortalized rat RPTCs and that renal Ang II acts in an autocrine manner to stimulate TGF- $\beta$ 1 expression and, subsequently, TGF- $\beta$ 1 enhances cellular hypertrophy and collagen  $\alpha$ <sub>1</sub> (type IV) expression in RPTCs (32). Our experiments on RPTCs have shown that high glucose stimulates Agt gene expression via at least 4 pathways:

- Protein Kinase C via de novo synthesis of diacylglycerol;
- p38 MAP Kinase;
- Hexosamine biosynthesis;
- ROS.

The latter have been extensively studied within the frame of elucidating the molecular mechanisms of hyperglycemia action in DN. It is now accepted that elevated glucose levels enhance PKC activation, augment membrane lipid peroxidation in glomeruli and induce Agt gene expression in rat RPTCs via ROS generation (25). Excessive intracellular accumulation of glucose (seen in chronic hyperglycemia) leads to disturbances at the level of the TriCarboxylic Acid (TCA) pathway, followed by the formation of high quantities of

electron donors (NADH, H<sup>+</sup> and FADH<sub>2</sub>) and mitochondrial superoxide overproduction (33). Increased mitochondrial superoxide production activates three main pathways: the polyol/protein kinase C pathway, the hexosamine biosynthesis pathway, and increased production of advanced glycated end products (AGE) and its receptor, RAGE (33). Our transgenic (Tg) mice overexpressing rat catalase (CAT) in their RPTCs exhibit attenuated ROS generation, Agt gene expression and RPTC injury in streptozotocin (STZ)-induced diabetes in vivo (5), unequivocally demonstrating the importance of ROS in mediating Agt gene expression and in the development of DN.

2.4 Recent findings on diabetic nephropathy using transgenic mouse models

In order to elucidate in vivo the importance of local intrarenal RAS, at least two systems could be used: targeted renal expression of RAS in knock out mice for any component of RAS and targeted renal overexpression of one component of the RAS in wild type mice. Our laboratory has been using the latter approach to elucidate the role of intrarenal RAS in DN.

2.4.1 The angiotensinogen transgenic mouse model

To obtain specific overexpression of the rat Agt gene (rAgt) in RPTC, our laboratory used the Kidney-specific Androgen regulated Promoter 2 (KAP2) (34, 35). The cDNA encoding full-length rAgt fused with HA-tag at the carboxyl terminal and NotI restriction enzyme site attached at both 5'- and 3'-termini was thus inserted into the KAP2 promoter and thereafter microinjected into one-cell fertilized mouse embryos as shown below:

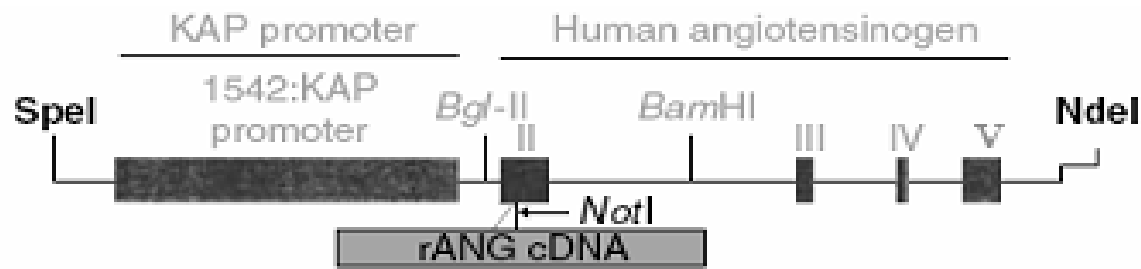


Fig. 2. Schematic map of the kidney androgen-regulated promoter (KAP2)-rat Agt construct

Studies using this rAgt-transgenic (Tg) mice model have demonstrated that overexpression of renal rAgt alone induces hypertension and albuminuria and that RAS blockade reverses these abnormalities (34). Thereafter the same model was used to assess a possible synergic deleterious action of local RAS overactivity and high glucose on RPTCs, which could contribute to the pathophysiology of DN and help unravel new protective mechanisms.

2.4.2 Tubular apoptosis in diabetic angiotensinogen transgenic mice

STZ was used to induce diabetes in non-transgenic (non-Tg) and Tg mice. As far as systemic hypertension is concerned, neither STZ-induced diabetes nor insulin treatment changed the blood pressure levels of Tg mice or non-Tg mice. STZ administration led, four weeks later, to diabetes, increased kidney/body weight and albuminuria, and were normalized by insulin treatment. RAS blockers did not affect glucose levels but reversed



the deleterious effects of rAgt-overexpression in diabetic mice. Renal injury found in Tg mice was more severe in STZ-treated Tg mice, with loss of brush borders in RPTC and marked tubular luminal dilatation. In addition, glomerular and RPTC hypertrophy and increased tubular luminal area were markedly attenuated by insulin and RAS blockers in Tg and non-Tg STZ-treated mice, while a combination of both treatments completely reversed these abnormalities. Apoptotic assays (TUNEL) and immunohistochemistry using caspase-3 antibody showed increased levels of apoptosis in RPTC of Tg mice compared to non-Tg, the latter having higher levels than non-STZ treated mice. Investigations of the molecular pathways involved reveal an increased level of Bax and concomitant downregulation of Bcl-xL. One hypothesis could therefore be that hyperglycemia enhanced tubular apoptosis by increasing the Bax/Bcl-xL ratio, thus having a pro-apoptotic effect. STZ-induced diabetes leads to apoptosis in RPTCs and to a lesser degree in distal tubules, but not in the glomeruli, confirming previous findings of a pro-apoptotic effect of diabetes on RPTCs (36). Treatment with insulin and/or RAS blockers leads to an almost complete absence of apoptosis in kidneys of non Tg and Tg mice. Another salient finding in Agt-Tg mice is the persistent kidney injury despite hydralazine treatment. In fact, hydralazine treatment markedly reduced systemic blood pressure but did not affect albuminuria and tubular apoptosis. Further investigations into the underlying mechanism of high glucose and Ang II action were performed on Tg mice overexpressing catalase (CAT-Tg) in their RPTCs. STZ-induced diabetic CAT-Tg mice exhibited attenuated ROS generation and tubular apoptosis (5). Furthermore, in double Tg mice having Agt and CAT specifically expressed in their RPTCs, ROS generation, NADPH activity and levels of hemoxygenase 1 (HO-1) were significantly lowered by CAT overactivity compared to Agt-Tg mice. Levels of collagen type IV, monocyte chemotactic protein-1 (MCP-1), TGF- $\beta_1$  and plasminogen activator inhibitor-1 were also lowered by CAT overexpression in double Tg mice compared to Agt Tg mice (37). Thus, CAT overexpression alleviates oxidative stress in RPTC and reduces the toxicity of Ang II and chronic hyperglycemia on the kidneys.

### 3. Conclusion and perspectives

Agt and chronic hyperglycemia act together at the level of the RPTC, leading to tubular atrophy due to pro-apoptotic activities and interstitial fibrosis. This unravels the importance of the local RAS in the development of DN. Both *in vitro* and *in vivo* experiments of overexpression of Agt indicate that the latter stimulates RPTC hypertrophy and apoptosis, but significant effects on the glomeruli remain to be determined. However, because tubular atrophy seems to be a better predictor of disease progression than glomeruli lesions, this finding may be considered of significant clinical importance, as therapeutics reproducing the effects of CAT may be specifically developed to impede or even stop the progression of DN.

Further directions include studying the effect of the local RAS on glomeruli and deciphering the molecular pathways by which Agt and chronic hyperglycemia induce RPTC apoptosis. One important clue is the role of ROS, which is induced by both intrarenal RAS overactivity and chronic hyperglycemia. Indeed, we have reported an increase of apoptotic cells in RPTCs of db/db mice (type II diabetic mouse model) and normalization by overexpression of catalase (CAT) in their RPTCs (db/db CAT-Tg mice) (38) as shown below:

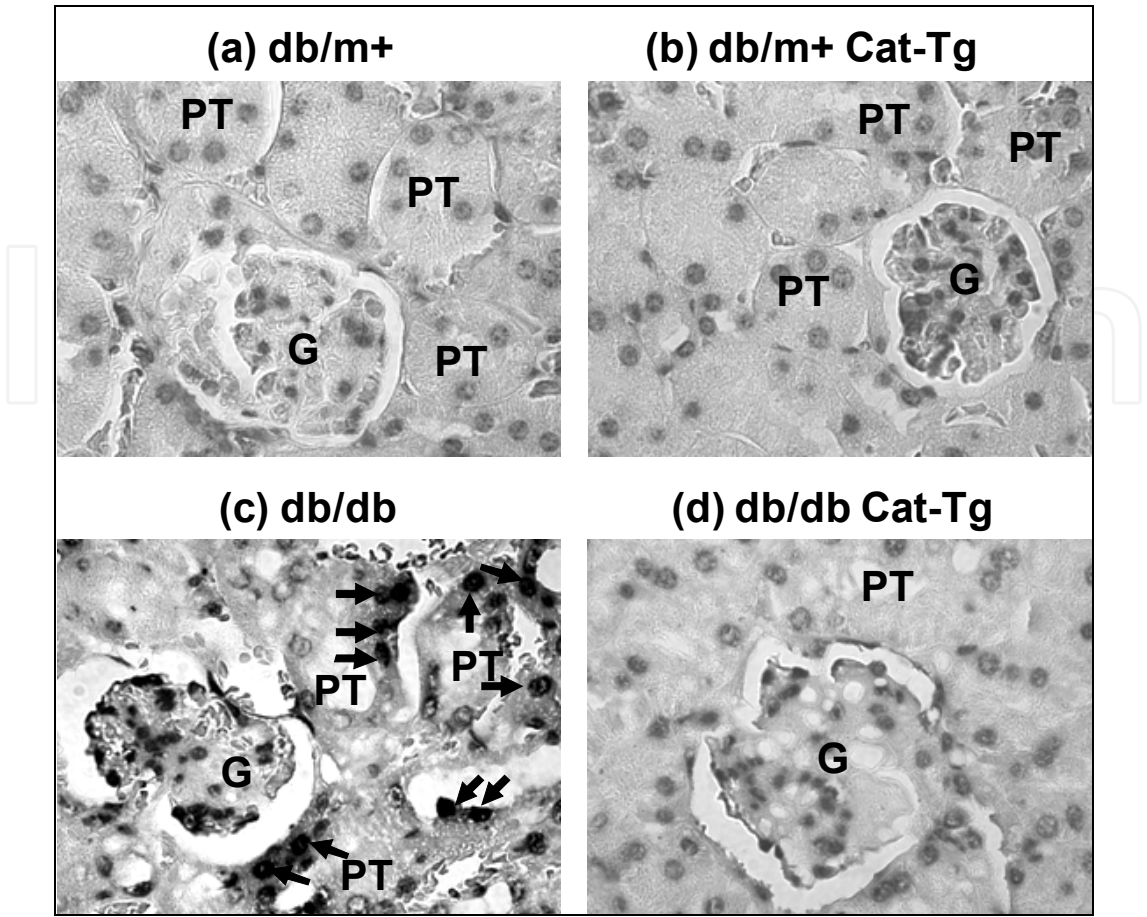


Fig. 3. Apoptosis in male non-Tg and Tg mouse kidneys at week 20, analyzed by TUNEL staining. Arrows indicate apoptotic cells. G, glomerulus; PT, proximal tubule. Magnification x600.

Using DNA chip microarrays technology, our laboratory recently identified 2 pro-apoptotic genes, Bcl-2 modifying factor (*Bmf*) and *Caspase-12*, which are differentially upregulated in renal proximal tubules of db/db mice but normalized in db/db CAT-Tg mice (39) as shown below:

Probe Set ID	Gene Title	Fold-change (db/db vs db/m+)	p-value (db/db vs db/m+)	Fold-change (db/db vs db/db- CAT Tg)	p-value (db/db vs db/db- CAT Tg)
1450231_a_at	baculoviral IAP repeat-containing 4	1.28	0.0039	1.29	0.0038
1454880_s_at	Bcl2-modifying factor	3.07	0.0099	3.07	0.0098
1449297_at	caspase 12	1.82	0.0069	1.81	0.0070
1431875_a_at	E2F transcription factor 1	1.19	0.0065	1.19	0.0064
1423602_at	Tnf receptor-associated factor 1	1.99	0.0073	1.97	0.0074
1445452_at					

Fig. 4. List of genes up-regulated in microarray chips of db/db vs db/m+ and db/db vs db/db CAT-Tg mice



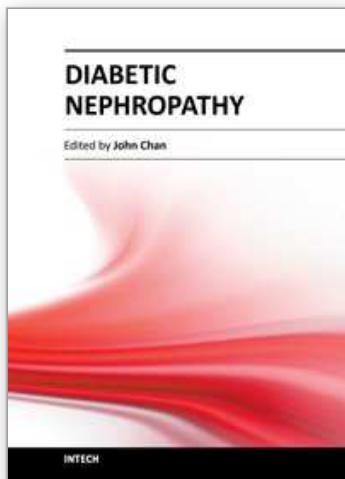
One hypothesis that needs further examination is whether intrarenal RAS overactivation and chronic hyperglycemia may act synergistically to induce ROS generation and subsequently induce endoplasmic reticulum (ER) stress in RPTCs and enhance ER-stress gene expression such as caspase-12, glucose-regulated protein 78 (GRP78)/immunoglobulin-heavy-chain-binding protein (BiP), and CCAAT/enhancer-binding protein homologous protein (CHOP) expression and activation, triggering the initiation and amplification of the apoptotic cascade leading to tubular apoptosis.

#### 4. References

- [1] Kaul K, Hodgkinson A, Tarr J, Kohner EM, Chibber R. Is Inflammation a Common Retinal-Renal-Nerve Pathogenic Link in Diabetes? *Curr Diabetes Rev.* 2010; 6:294-303.
- [2] Marcovecchio ML, Chiarelli F. Microvascular disease in children and adolescents with type 1 diabetes and obesity. *Pediatr Nephrol.* 2010; 26: 365-375.
- [3] Jensen T, Borch-Johnsen K, Kofoed-Enevoldsen A, Deckert T. Coronary artery disease in young type 1 (insulin-dependent) diabetic patients with and without diabetic nephropathy: incidence and risk factors. *Diabetologia* 1987; 30:144-148
- [4] Bello AK, Thadhani R, Hemmelgarn B, Klarenbach S, Gill J, Chan C, Zimmerman D, Holmes D, Cembrowski G, Opgenorth D, Sibrian R, Karkhaneh M, Tiv S, Wiebe N, Tonelli M. Design and implementation of the canadian kidney disease cohort study (CKDCS): A prospective observational study of incident hemodialysis patients. *BMC Nephrol.* 2011; 12:10.
- [5] Dalla Vestra M, Saller A, Bortoloso E, Mauer M, Fioretto P. Structural involvement in type 1 and type 2 diabetic nephropathy. *Diabetes Metab.* 2000; 26 (Suppl 4):8-14.
- [6] Brezniceanu ML, Liu F, Wei CC, Tran S, Sachetelli S, Zhang SL, Guo DF, Filep JG, Ingelfinger JR, Chan JSD. Catalase overexpression attenuates angiotensinogen expression and apoptosis in diabetic mice. *Kidney Int.* 2007; 71:912-23.
- [7] National Kidney Foundation . KDOQI clinical practice guidelines and clinical practice recommendations for diabetes and chronic kidney disease. *Am J Kidney Dis.* 2007; 49 (suppl 2):S12-S154.
- [8] Patel A; ADVANCE Collaborative Group, MacMahon S, Chalmers J, Neal B, Woodward M, Billot L, Harrap S, Poulter N, Marre M, Cooper M, Glasziou P, Grobbee DE, Hamet P, Heller S, Liu LS, Mancia G, Mogensen CE, Pan CY, Rodgers A, Williams B. Effects of a fixed combination of perindopril and indapamide on macrovascular and microvascular outcomes in patients with type 2 diabetes mellitus (the ADVANCE trial): a randomised controlled trial. *Lancet.* 2007; 370:829-840
- [9] Yusuf S, Sleight P, Pogue J, Bosch J, Davies R, Dagenais G. Effects of an angiotensin-converting-enzyme inhibitor, ramipril, on cardiovascular events in high-risk patients. The Heart Outcomes Prevention Evaluation Study Investigators. *N Engl J Med.* 2000; 342:145-153.
- [10] Lewis EJ, Hunsicker LG, Bain RP, Rohde RD, for the Collaborative Study Group. The effect of angiotensin-converting-enzyme inhibition on diabetic nephropathy. *N Engl Med.* 1993;329:1456-1462.
- [11] Heart Outcomes Prevention Evaluation Study Investigators. Effects of ramipril on cardiovascular and microvascular outcomes in people with diabetes mellitus. Results of the HOPE Study and MICRO-HOPE Sub-Study. *Lancet* 2000; 355: 253-259.

- [12] Brenner BM, Cooper ME, de Zeeuw D, for the RENAAL Study Investigators. Effects of losartan on renal and cardiovascular outcomes in patients with type 2 diabetes and nephropathy. *N Engl J Med* 2001; 345: 861–869.
- [13] Mogensen CE, Neldam S, Tikkanen I, for the CALM Study group. Randomised controlled trial of dual blockade of renin-angiotensin system in patients with hypertension, microalbuminuria, and non-insulin dependent diabetes: the Candesartan and Lisinopril Microalbuminuria (CALM) study. *BMJ* 2000; 321: 1440–1444.
- [14] Krause MW, Fonseca VA, Shah SV. Combination inhibition of the renin-angiotensin system: is more better? *Kidney Int.* 2011; 80:245–55.
- [15] Basso N, Terragno NA. History about the discovery of the renin-angiotensin system. *Hypertension.* 2001; 38: 1246–1249.
- [16] Murphy TJ, Alexander RW, Griendling KK, Runge MS, Bernstein KE. Isolation of a cDNA encoding the vascular type-1 angiotensin II receptor. *Nature* 1991; 351:233–236
- [17] Cheng H-F, Becker BN, Burns KD, Harris RC. Angiotensin II upregulates type-1 angiotensin II receptors in renal proximal tubule. *J Clin Invest* 1995; 77:1993–2000.
- [18] Burns KD. Angiotensin II and its receptors in the diabetic kidney. *Am J Kidney Dis* 2000; 36:449–467.
- [19] Ruiz-Ortega M, Esteban V, Suzuki Y, Ruperez M, Mezzano S, Ardiles L, Justo P, Ortiz A, Egido J. Renal expression of angiotensin type 2 (AT2) receptors during kidney damage. *Kidney Int Suppl.* 2003 Oct;(86):S21–6.
- [20] Zhuo JL, Li XC. New insights and perspectives on intrarenal renin-angiotensin system: focus on intracrine-intracellular angiotensin II. *Peptides* 2011; 32:1551–1565.
- [21] Handa RK. Characterization and signaling of the AT4 receptor in human proximal tubule epithelial (HK-2) cells. *JASN* 2011; 12:440–449.
- [22] Kagami S, Border WA, Miller DE, Noble NA. Angiotensin II stimulated extracellular matrix protein synthesis through induction of transforming growth factor- $\beta$  expression in rat glomerular cells. *J Clin Invest* 1994; 93:2431–2437.
- [23] Leehey DJ, Song RH, Alavi N, Singh AK. Decreased degradative enzymes in mesangial cells cultured in high glucose media. *Diabetes* 1995; 44:929–935.
- [24] Liu F, Brezniceanu ML, Wei CC, Chénier I, Sachetelli S, Zhang SL, Filep JG, Ingelfinger JR, Chan JSD. Overexpression of angiotensinogen increases tubular apoptosis in diabetes. *J Am Soc Nephrol.* 2008;19: 269–80.
- [25] Hsieh TJ, Zhang SL, Filep JG, Tang SS, Ingelfinger JR, Chan JSD. High glucose stimulates angiotensinogen gene expression via reactive oxygen species generation in rat kidney proximal tubular cells. *Endocrinology.* 2002; 143:2975–2985.
- [26] Hsieh T-J, Fustier P, Wei C-C, Zhang S-L, Filep JG, Tang S-S, Ingelfinger JR, Fantus IG, Hamet P, Chan JSD. Reactive oxygen species blockade and action of insulin on the expression of angiotensinogen in proximal tubular cells. *J Endocrinology* 2004; 183:535–550.
- [27] Li H, Weatherford ET, Davis DR, Keen HL, Grobe JL, Daugherty A, Cassis LA, Allen AM, Sigmund CD. Renal Proximal Tubule Angiotensin AT1A Receptors Regulate Blood Pressure. *Am J Physiol Regul Integr Comp Physiol.* 2011; 301: R1067–1077.
- [28] Seikaly MG, Arant BS, Seney FD *et al*: Endogenous angiotensin concentrations in specific intrarenal fluid compartments of the rat. *J Clin Invest* 1990; 86: 1352–1357.
- [29] Donoghue M, Hsieh F, Baronas E, Godbout K, Gosselin M, Stagliano N, Donovan M, Woolf B, Robison K, Jeyaseelan R, Breitbart RE, Acton S. A novel angiotensin-

- converting enzyme-related carboxypeptidase (ACE2) converts angiotensin I to angiotensin 1-9. *Circ Res.* 2000; 87:E1-9.
- [30] Reich HN, Oudit GY, Penninger JM, Scholey JW, Herzenberg AM. Decreased glomerular and tubular expression of ACE2 in patients with type 2 diabetes and kidney disease. *Kidney Int.* 2008; 74: 1610-6.
- [31] Shiota A, Yamamoto K, Ohishi M, Tatara Y, Ohnishi M, Maekawa Y, Iwamoto Y, Takeda M, Rakugi H. Loss of ACE2 accelerates time-dependent glomerular and tubulointerstitial damage in streptozotocin-induced diabetic mice. *Hypertens Res.* 2010; 33:298-307.
- [32] Zhang SL, To C, Chen X, Filep JG, Tang SS, Ingelfinger JR, Chan JSD. Essential role(s) of the intrarenal renin-angiotensin system in transforming growth factor-beta1 gene expression and induction of hypertrophy of rat kidney proximal tubular cells in high glucose. *J Am Soc Nephrol.* 2002; 13:302-12.
- [33] Giacco F, Brownlee M. Oxidative stress and diabetic complications. *Circ Res.* 2010; 107: 1058-1070.
- [34] Sachetelli S, Liu Q, Zhang SL, Liu F, Hsieh TJ, Brezniceanu ML, Guo DF, Filep JG, Ingelfinger JR, Sigmund CD, Hamet P, Chan JSD. RAS blockade decreases blood pressure and proteinuria in transgenic mice overexpressing rat angiotensinogen gene in the kidney. *Kidney Int.* 2006; 69:1016-1023.
- [35] Ding Y, Davisson RL, Hardy DO, Zhu LJ, Merrill DC, Catterall JF, Sigmund CD. The kidney androgen-regulated protein promoter confers renal proximal tubule cell-specific and highly androgen-responsive expression on the human angiotensinogen gene in transgenic mice. *J Biol Chem.* 1997; 272: 28142-28148.
- [36] Sogaru E, Nakagawa T, Ono-Kishino M, Nagamine J, Tikunaga T, Kitoh M, Hume WE, Nagata R, Taiji M: Amelioration of established diabetic nephropathy by combined treatment with SMP-534 (antifibrotic agent) and losartan in db/db mice. *Nephron Exp Nephrol.* 2006; 105: 45-52.
- [37] Godin N, Liu F, Lau GJ, Brezniceanu ML, Chénier I, Filep JG, Ingelfinger JR, Zhang SL, Chan JSD. Catalase overexpression prevents hypertension and tubular apoptosis in angiotensinogen transgenic mice. *Kidney Int.* 2010; 77:1086-1097.
- [38] Brezniceanu ML, Liu F, Wei C-C, Chénier I, Godin N, Zhang SL, Filep JG, Ingelfinger JR, Chan JSD. Attenuation of interstitial fibrosis and tubular apoptosis in db/db transgenic mice overexpressing catalase in renal proximal tubular cells. *Diabetes* 2008; 57:451-459
- [39] Brezniceanu ML, Lau CJ, Godin N, Chénier I, Duclos A, Ethier J, Filep JG, Ingelfinger JR, Zhang SL, Chan JSD. Reactive oxygen species promote caspase-12 expression and tubular apoptosis in diabetic nephropathy. *J Am Soc Nephrol.* 2010; 21:943-954.



## **Diabetic Nephropathy**

Edited by Dr. John Chan

ISBN 978-953-51-0543-5

Hard cover, 166 pages

**Publisher** InTech

**Published online** 20, April, 2012

**Published in print edition** April, 2012

Internationally renowned experts have provided data on their own studies, and discuss the relative usefulness of their work in relation to diabetic nephropathy. The first section describes the novel role of intrarenal renin-angiotensin-aldosterone system (RAAS) and oxidative stress in the development of diabetic nephropathy and discusses the current and novel pharmacological interventions in the treatment of diabetic nephropathy. The second section discusses other important contributors outside of the RAAS in the pathogenesis of diabetic nephropathy including AGE/RAGE, epithelial-mesenchymal-transition (EMT) and immune cytokines. Features: Provides novel information on various pathophysiological determinants in the development of diabetic nephropathy Provides novel information on various pharmacological interventions of diabetic nephropathy

### **How to reference**

In order to correctly reference this scholarly work, feel free to copy and paste the following:

Brice E. T. Nouthe, Maya Saleh, Shao-Ling Zhang and John S. D. Chan (2012). Renal Angiotensinogen Gene Expression and Tubular Atrophy in Diabetic Nephropathy, Diabetic Nephropathy, Dr. John Chan (Ed.), ISBN: 978-953-51-0543-5, InTech, Available from: <http://www.intechopen.com/books/diabetic-nephropathy/renal-angiotensinogen-gene-expression-and-tubular-atrophy-in-diabetic-nephropathy>

**INTECH**  
open science | open minds

### **InTech Europe**

University Campus STeP Ri  
Slavka Krautzeka 83/A  
51000 Rijeka, Croatia  
Phone: +385 (51) 770 447  
Fax: +385 (51) 686 166  
[www.intechopen.com](http://www.intechopen.com)

### **InTech China**

Unit 405, Office Block, Hotel Equatorial Shanghai  
No.65, Yan An Road (West), Shanghai, 200040, China  
中国上海市延安西路65号上海国际贵都大饭店办公楼405单元  
Phone: +86-21-62489820  
Fax: +86-21-62489821

© 2012 The Author(s). Licensee IntechOpen. This is an open access article distributed under the terms of the [Creative Commons Attribution 3.0 License](https://creativecommons.org/licenses/by/3.0/), which permits unrestricted use, distribution, and reproduction in any medium, provided the original work is properly cited.

IntechOpen

IntechOpen