

# We are IntechOpen, the world's leading publisher of Open Access books Built by scientists, for scientists

6,900

Open access books available

185,000

International authors and editors

200M

Downloads

Our authors are among the

154

Countries delivered to

TOP 1%

most cited scientists

12.2%

Contributors from top 500 universities



WEB OF SCIENCE™

Selection of our books indexed in the Book Citation Index  
in Web of Science™ Core Collection (BKCI)

Interested in publishing with us?  
Contact [book.department@intechopen.com](mailto:book.department@intechopen.com)

Numbers displayed above are based on latest data collected.  
For more information visit [www.intechopen.com](http://www.intechopen.com)



# Insulin-Like Growth Factor Receptor Signaling in Thyroid Cancers: Clinical Implications and Therapeutic Potential

Geetika Chakravarty\* and Debasis Mondal

*Tulane University School of Medicine, Department of Pharmacology,  
New Orleans, LA,  
USA*

## 1. Introduction

Human Thyroid Tumors represent a multistage model of epithelial tumorigenesis. Even though a majority of these tumors originate from follicular cells, they exhibit a broad spectrum with different phenotypic characteristics and variable clinical behavior. Our recent studies suggest that numerous growth factors and their receptors may be abnormally overexpressed or constitutively activated in thyroid tumors to influence their biological behavior. In this chapter we review our current understanding of the role of Insulin-like growth factors (IGFs) and their receptors in the pathogenesis of thyroid cancer and how expression of pIGF-IR may be an indicator of their clinical behavior [1]. Mechanistic evidence for direct involvement of IGF-I signaling in metastasis of anaplastic thyroid cancer & on tumor associated angiogenesis [2] is also discussed. Finally, as several small molecular inhibitors of IGF-IR signaling (peptide-based antagonists and monoclonal antibodies) are being tested, we will discuss the potential impact of utilizing IGF-I signaling pathway as a therapeutic target [2, 3] for aggressive thyroid cancers especially in cases where the current therapeutics have failed to show a favorable outcome.

Thyroid cancer (TC) is one of the most common endocrine malignancies worldwide. According to recent American Cancer Society (ACS) estimates, its incidence is rising in the US, with an average increase of 6% between 1975 & 2008[4]. Recent data further indicates that its incidence is three times higher in women than in men amongst all ethnic populations. Even though a majority of these tumors originate from follicular cells, they exhibit a broad spectrum with different phenotypic characteristics and variable clinical outcomes. Histopathological evaluation of TC specimens suggests that these tumors can be further sub-classified as differentiated thyroid carcinoma (DTC), undifferentiated (anaplastic) thyroid carcinoma (ATC) and medullary thyroid carcinoma (MTC). DTC and ATC are also referred to as nonmedullary thyroid cancer (NMTC) and may include subtypes like Hurthle cell carcinomas (HCC). Ninety to ninety three percent of all thyroid tumors are of differentiated phenotypes and have a papillary (PTC) or follicular (FTC)

---

\* Corresponding Author

morphology. Usually these tumors follow a protracted clinical course with a 10-year survival rate of 92%. Another 5% are MTCs where the 5-year survival rate is approximately 50%. On the contrary, ATCs arise either de novo or may evolve from follicular or papillary carcinomas. These tumors are rare, occurring in only 1-2% of all TCs, and are invariably associated with fatal outcomes [5]. In the clinic, these patients present themselves with widely invasive local disease and are surgically incurable. The survival rate for ATCs which frequently metastasize to distant sites, is <10%. Severity of ATC is further underscored by the fact that even when these patients receive aggressive multimodal therapy such surgery, radiotherapy, and chemotherapy, more than 80% of patients die within months, especially those who are more than sixty years of age[6]. An in-depth understanding of thyroid cancer biology is therefore a necessary prerequisite to develop better management schemes for different types of thyroid cancers. Furthermore, the information gleaned could be utilized to make therapeutic advances that may improve the outcomes of thyroid cancer patients in the near future.

So far, study of genetic and epigenetic alterations in thyroid cancer cells has given us exciting new insights into the mechanisms that give rise to thyroid tumors [7]. Even though

Single TKIs	Target	Ref
gefitinib <sup>67</sup>	EGFR	Pennell et.al.
imatinib (STI571) <sup>64</sup>	c-kit	Ha et.al.
Multikinase inhibitors	Target	Ref
sorafenib <sup>63, 66</sup>	BRAF, VEGFR 1 and 2 and PDGFR, c-kit, Flt-3	Duntas et.al. Lam et.al.
sunitinib (SU11248) <sup>60, 61</sup>	Flt-3, c-kit, VEGFR, and PDGFR	Broutin, et.al. Carr et.al.
Axitinib(AG-013736) <sup>62</sup>	All VEGFRs	Cohen et.al.
Motesanib (AMG 706) <sup>69</sup>	VEGFR 1–3, RET and c-KIT	Rosen et.al.
Vandetanib (ZD 6474) <sup>68, 70</sup>	VEGFR 2 and 3, RET and EGFR	Robinson et.al. Wells et.al.
Pazopanib (GW786034) <sup>59</sup>	VEGFR 1–3 and c-KIT	Bible et.al.
XL184 (Exelixis) <sup>65</sup>	RET, c-MET and VEGFR 1 and 2	Review by Kapiteijn et.al.
PLX 4032 <sup>65</sup>	V600E mutant BRAF kinase, not wild type	Review by Kapiteijn et.al.
E7080 <sup>65</sup>	VEGFRs, c-KIT and PDGFR $\beta$ stem cell factor	Review by Kapiteijn et.al.

Table 1. Single and multi-kinase inhibitors under clinical development for treating thyroid cancer.

we may be far away from a clear understanding of the complete set of molecular events that transform benign thyroid cells into tumorigenic cells, a vast majority of literature indicates that signals originating from growth factors (GF) and their receptors play an important role in fueling the growth of aggressive cancer.

It is well established that GF signaling is required for maintaining the malignant phenotype through alteration of the cell cycle, induction of apoptosis, and modulation of the behaviour of tumor cell or its micro-environment [8]. It is no surprise then that GF and their receptors have become attractive candidates for targeted therapy of cancer[9]. Constitutive signaling through the receptor tyrosine kinases (RTKs), particularly the epidermal growth factor receptor (EGFR, erbB1), Her2/neu (c-erbB2), and vascular endothelial growth factor receptor (VEGFR) has been reported in multiple tumor types including TC. This has opened up the possibility of blocking them with small molecule tyrosine kinase inhibitors (TKIs) either as single agent or as a cocktail of multi-kinase complexes (see Table 1), or with human or humanized monoclonal antibodies (mAb) (see Table 2).

Trade name	Type of Ab	Target	Clinical Use
Trastuzumab	hmAb	against the juxtamembrane region of HER2	HER-2 over-expressing breast cancer
Cetuximab	mAb	competitive antagonist for EGFR	CRC, HNSCC
Bevacizumab	recom hmAb	specific for the VEGF A	CRC, NSCLC

Table 2. Monoclonal antibodies as inhibitors of receptor tyrosine kinases.

Insulin-like growth factor-I receptor (IGF-IR) is another candidate gene that has gained popularity as a viable RTK target in the last two decades for several different reasons [10, 11]. The most significant reason is that multiple oncogenes require the presence of IGF-IR to achieve cellular transformation[12]. In addition, IGF-I signaling confers resistance to many therapies that currently constitute the standard of care in oncology[13-15]. Furthermore, epidemiological studies have shown that elevated plasma levels of IGF-I are associated with higher risk of several cancers (breast, colon, prostate and lung) [16-19]. All of these data suggest that instead of using conventional cytotoxic chemotherapy, targeting the IGF-I axis may be an important, effective and well-tolerated therapeutic alternative for treating cancer[20]. Indeed, several anti-IGF-IR compounds are in Phase I and Phase II clinical trials[21] to measure their anti-tumor effects as single agents or when given in combination with chemotherapy or radiotherapy (Table 3). However, very few studies have looked at the role of IGF-IR signaling in TC or evaluated the potential of anti-IGF-IR therapy for in this cancer. We investigated whether enhanced IGF-IR signaling promotes

class	ID	Company	Phase of dev	Target organs
IGF-IR inhibition	IGF-IR specific Antisense oligonucleotides			
IGF-IR inhibition	IGF-IR specific Si or ShRNA			
IGF-IR specific Antibodies				
	CP-751,871 (figitumumab)	Pfizer	Phase III	NSCLC, and ovarian carcinoma, prostate, breast, colon
	IMC-A12	Imclone Systems	Phase II	neuroendocrine tumors, prostate, colorectal, breast, pancreatic, liver, and head and neck, HCC
	AMG 479 (ganitumab)	Amgen	Phase II	Ewing's/PNET, colorectal, breast, pancreatic, and small-cell lung cancer
	MK0646 (dalotuzumab)	Merck	Phase II	Colon, Pancreas, neuroendocrine tumors
	AVE1642	Sanofi_Aventis	Phase II	Breast, Liver, Multiple myeloma, Ewing's sarcoma
	R1507	Roche	Phase II	Lung, breast, sarcoma, advanced solid tumor
TKI	NVP-AEW541	Novartis	Phase I/II	Multiple myeloma, glioblastoma, Ewing's sarcoma and breast cancer
	NVP-ADW742	Novartis		
	NVP-TAE226	Novartis		
	BMS-536924	Bristol Myers Squibb		
	BMS-554417*	Bristol Myers Squibb		
	BMS-754807*	Bristol Myers Squibb		Breast, head and neck, advanced solid tumor
	OSI-906 (PQIP)	OSI Pharma	Phase III	Adrenocortical, ovarian, breast, advanced solid tumor, colon and liver
	A-928605	Abbott		
	XL-228**	Exelixis	Phase I	CML, lymphoma, cancer
	AXL1717	Axelar AB	Phase I/II	
Antibodies for the ligands	KM1468 KM3168 KM3002	Kyowa Hakko	preclinical	
IGFBPs	Recombinant human IGFBP3 protein SomatoKine/IPLEX	Imsmed Incorporated	Phase I/II	Myotonic dystrophy type 1
	cyclolignan picropodophyllin (PPP)	Biovitrum		
	nordihydroguaiaretic acid***	INSMED		

\*Targets IR in addition to IGF-IR, \*\*targets Abl, SFK,Src, Aurora kinase A, \*\*\* targets Her2

Table 3. Drugs targeting Type I insulin-like growth factor receptor.

thyroid cancer progression and if so, is it a viable candidate for RTK therapy in thyroid cancer. In this chapter, we review the basics of IGF-IR signaling, our experience with over-expression of IGF-IR signaling components in TC and how blockade of IGF-I signaling through its receptor has the potential to curb the growth of poorly differentiated FTC and ATC. Later sections of the chapter also describe important molecular changes resulting from IGF-IR blockade and their influence on tumor growth.

2. Brief overview of insulin-like growth factor receptor signaling

Major components of IGF signaling axis include the three ligands (IGF-I, IGF-II & Insulin), IGF binding proteins (IGFBPs) and the three tyrosine kinase receptors, namely, IGF-IR, IGF-IIR and Insulin receptor (IR). All of these ligands can act as circulating hormone or tissue growth factors. Similarly, the IGFBPs are also produced in the liver or other organs and

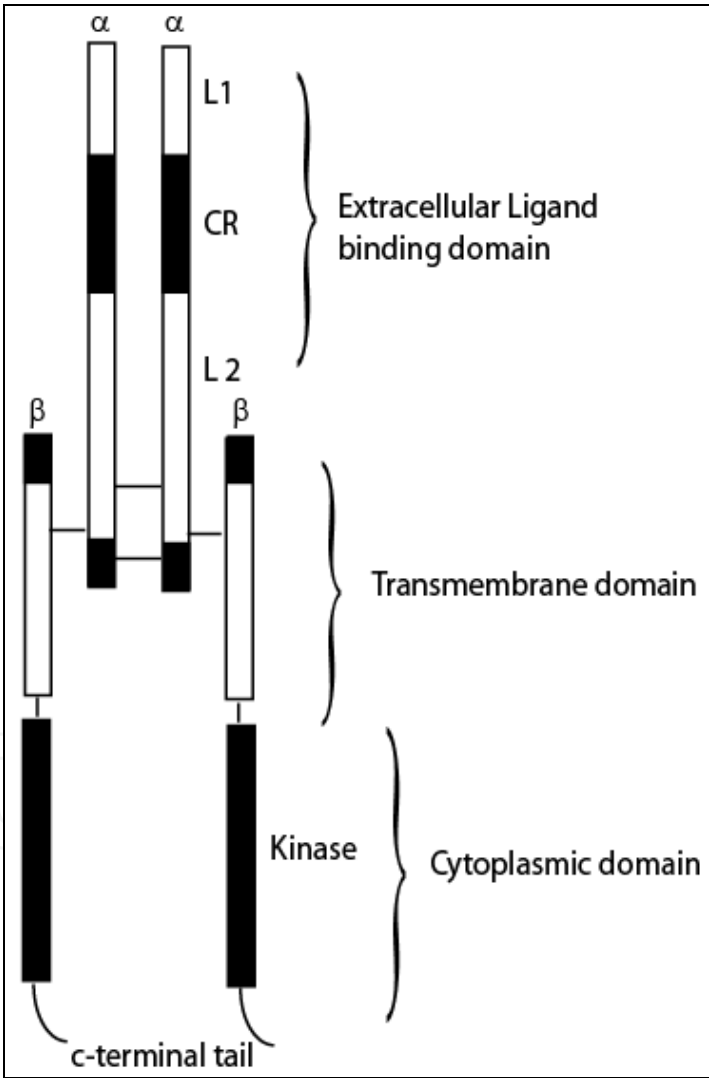


Fig. 1. Schematic of Insulin like growth factor receptor illustrating its different domains and the position of sulphide bonds. IGF-IR is a trans-membrane tyrosine kinase and consists of two  $\alpha\beta$  chains and has high affinity for its ligands IGF-I and IGF-II. Insulin can also bind and signal through this receptor although with much lower affinity.

delivered to the target tissue in an endocrine manner. The balance of IGF-I, either bound to IGFBP or its unbound form determine whether a cell will follow a survival pathway or follow an apoptotic course. Free IGF-I exerts its effects through the activation of IGF-IR, its preferred cell surface receptor. IGF-IR is synthesized as a precursor peptide of 1367 amino acid residues. It is then cleaved at residue 706, to dissociate the  $\alpha$  chain containing the extracellular domain from the  $\beta$ -chain that encompasses the transmembrane and tyrosine kinase domains (Fig. 1).

It moves to the membrane fully assembled in the dimeric form with two  $\alpha$ -chains and two  $\beta$ -subunits[22]. Signaling through IGF-IR is initiated when IGF-I and IGF-II produced by the liver and at many extra hepatic sites including tumor cells and stromal fibroblasts or insulin bind to IGF-IR. Upon ligand binding, IGF-IR is auto phosphorylated to stimulate its tyrosine kinase activity that subsequently phosphorylates additional intracellular substrates, including insulin receptor substrates-1 through 4 (IRS-1-4) and Shc (an SH2 domain containing adaptor protein). These early events activate multiple signaling pathways, including the mitogen-activated protein kinase [MAPK, extracellular signal-regulated kinase (ERK)] and phosphatidylinositolide 3-kinase (PI3-K)/Akt-1 (protein kinase B) pathways (Fig. 2)[23, 24]. Signaling from IGF-IR is known to play a crucial role in organ development[25-27]during embryogenesis and regulation of mitogenesis through suppression of apoptosis and stimulation of proliferation[28].

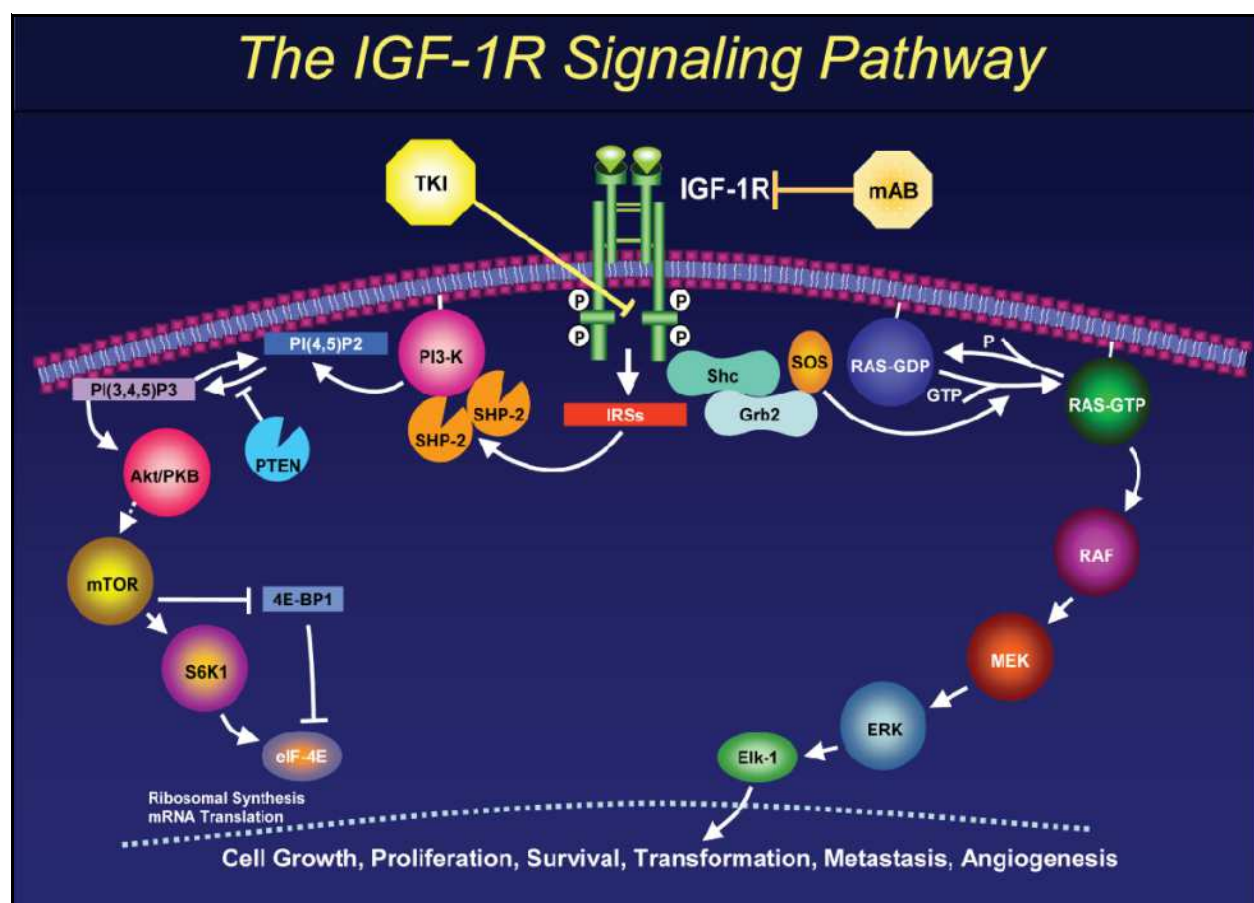


Fig. 2. IGF-IR signaling and two most frequently used IGF-IR inhibition strategies: In response to ligand binding, IGF-IR $\beta$  gets activated and phosphorylates adaptor proteins belonging to the IRS family or SHC. Activation of IRS and SHC leads to activation of extracellular signal-regulated kinase (ERK) 1/2 of the MAPK cascade via the growth factor

receptor binding protein 2 (Grb2)/Sos/Ras/Raf/MAPK extracellular signal-regulated kinase kinase (MEK) pathway. IRS proteins also bind to the p110 subunit of PI3K, leading to the generation of phosphatidylinositol 3,4,5-triphosphate (PIP3) and phosphorylation of Akt by phosphoinositide dependent kinase (PDK1). Phosphorylation of Akt leads to subsequent activation of mammalian target of rapamycin (mTOR), eukaryotic translation initiation factor 4E (eIF4E), and p70S6 kinase (S6K). Activation of these downstream signaling pathways leads to enhanced proliferation, survival, and metastasis in cancer cells. Similar signaling pathways are activated by IR and other IGF-IR/IR hybrid receptors.

In normal cells, the IGF/IGF-IR signaling is regulated at multiple levels (Fig. 3)[29]. Initially, Growth hormone-releasing hormone (GHRH) stimulates the expression of growth hormone (GH) produced in the pituitary gland. GH then stimulates the secretion of IGFs and IGFBPs from the hepatocytes [30]. As stated earlier, activation of IGF-IR is tightly regulated by amount of free forms of the ligands, which is controlled by the action of IGFBP and the type 2 IGF receptor (IGF-IIR) also known as mannose 6-phosphate receptor. This receptor can bind IGF-II but lacks tyrosine kinase activity. Accordingly, when IGF-II binds the receptor, it fails to transduce its signal and just serves as a sink for the IGF-II. This reduces the circulating levels of IGF-II thus enhancing the signalling of IGF-IR [31].

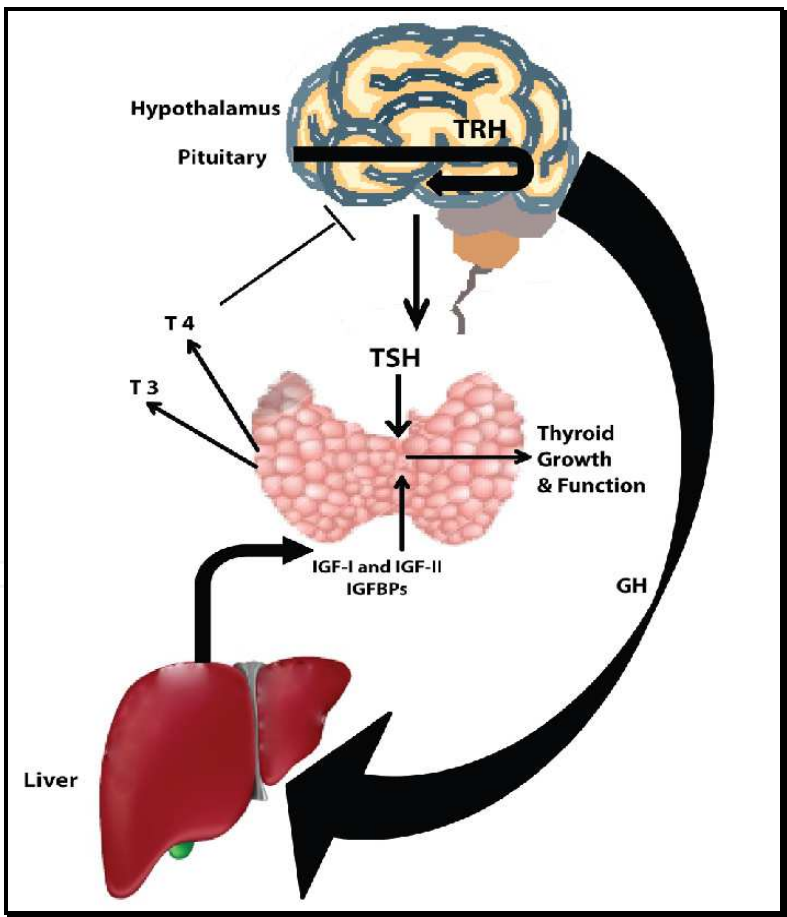


Fig. 3. Growth hormone (GH) and Thyroid stimulating hormone (TSH) are produced under the influence of hypothalamic factors. GH controls the secretion of IGF-I, IGF-II and IGFBPs from liver, whereas TSH controls the secretion of T3 & T4 that regulate thyroid growth. In normal thyroid cells TSH cooperates with IGF-I signaling to promote thyroid growth and

function. However, in some cases, excessive constitutive synthesis of IGF-I may be involved in abnormal growth of the thyroid.

In contrast, IGFBP 1-6 modulate IGF activity by reducing bioavailability of IGFs that may bind to the IGF-IR. The complex balance between the IGFs and the IGFbps is modulated by specific IGFBP proteases, such as matrix metalloproteinase (MMP)[32]. Like IGF-I and IGF-II, Insulin can also signal through the IGF-IR, IR and the IGF-IR/IR hybrid receptor to induce a variety of biological effects in typical insulin target (adipocyte, hepatocyte, and myocyte) cells[33] and in cancer cells. Upon ligand binding, insulin/IGF-IR undergoes autophosphorylation on tyrosine residues, activating the same downstream signaling cascade as the ones initiated upon IGF-I binding. However, as insulin binds to the IGF-1R with 100- to 1000-fold lower affinity than IGF-I[34], most of the signaling from the IGF-IR may be assumed to be the result of IGF-I signaling. Nevertheless, the high degree of homology of IGF-IR to insulin receptor has been a considerable challenge for the development of anti-IGF-IR therapies that are specific to IGF-IR.

### **3. Role of IGF-IR signaling axis components in human thyroid cancers**

Inappropriate IGF-IR signaling is implicated in the development and progression of several human malignancies [35] including those of the thyroid[36-38], and often correlates with poor prognosis[39, 40]. Activation of IGF-IR is essential for the mitogenic effects of TSH and for thyroid function [41-44]. Unlike other growth factor receptors, IGF-IR and insulin receptor (IR) are not inhibitory to thyroid function. Instead they cooperate with TSH to stimulate growth (Fig. 3). However, in some cases, excessive constitutive synthesis of IGF-I has been shown to be involved in abnormal growth of the thyroid[45]. Additional accumulated evidence from studies of other neoplasms suggests that in addition to the TSH-IGF-I nexus, there are several other mechanisms by which IGF-IR signaling may be dysregulated in human tumors. It can be constitutively activated through autocrine or paracrine signaling[39, 46]. Alternatively, ligand-independent mechanisms can result in the activation of the receptor[47]. By far, the most common occurrence is overexpression of IGF-IR. However, whether that is the case in thyroid cancer is unknown.

### **4. IGF-I and IGF-IR $\beta$ expression is high in all histological subtypes of thyroid cancer and thyroid cancer cell lines**

In recent studies, the authors measured the expression of IGF-I, IGF-IR $\beta$  and phosphorylated IGF-IR $\beta$  (pIGF-IR $\beta$ ) in normal and neoplastic human thyroid tissue to determine whether IGF-I axis plays a role in thyroid tumor progression. Evaluation of the distribution and abundance of IGF-I in human thyroid cancers with different histopathologic characteristics showed that immunoreactive IGF-I was present in all the thyroid tissues examined. Its expression was lowest in normal the thyroid tissues and highest in all thyroid carcinomas studied. Examination of expression level of IGF-IR $\beta$  in normal and neoplastic thyroid tissue on human tissue arrays showed that none of the normal thyroid tissue specimens stained positively for IGF-IR $\beta$ , whereas 60 out of 63 specimens of thyroid cancer were positive. The intensity of staining ranged from + to +++ (+ being low, ++ moderate and +++high). Compared to the normal thyroid tissue specimens, the positive staining rate of ATC (37/39, 94%) FTC (11/11, 100%) and PTC (12/13, 92%) specimens revealed statistically significant differences in IGF-IR $\beta$  expression

( $P < 0.001$ ). No statistical differences between ATC, FTC-and PTC-positive staining (Fig. 4A and Table 4) were noted.

Similar analysis of the thyroid cancer cell lines confirmed our findings from human tumor specimens. As per our expectation, most of the FTC and PTC cell lines showed little variability in IGF-IR $\beta$  expression. But its expression was comparatively lower in ATC cell lines. pIGF-IR $\beta$  expression on the other hand was variable. Overall, FTC and PTC cell lines had higher pIGF-IR $\beta$  levels compared to the normal thyroid cells or the anaplastic cell lines (Fig. 4B & C). It is important to mention here that the data presented is for representative cell lines only. More details can be accessed at Wang et.al. (2006)[2]. Nevertheless, despite the high IGF-IR content of several of the thyroid cancer cell lines tested, auto-phosphorylation of the receptor in response to IGF-I stimulation was observed only in cell lines that had an intact IGF-I axis. Evaluation of the phosphorylated form of the receptor (pIGF-IR) in surgical specimens of human FTC, PTC and ATC indicated that both FTC and PTC specimens had moderate to high levels of pIGF-IR. But neither the ATC specimens nor most of the ATC cell lines tested had detectable levels of pIGF-IR (Fig 4B). This data implied attenuated expression of growth-signaling components of the IGF system. In particular low pIGF-IR expression may be associated with malignant phenotype or more aggressive form of thyroid cancer. To test this hypothesis further, a quantitative immunohistochemical assay for pIGF-IR expression was developed[1] and archival human thyroid tumor microarrays containing specimens with 10 to 12 year follow up were analyzed as described.

Tissue type	No. of samples	IGF-IR $\beta$ staining				
		Level of staining				Positive staining (%)
		0	+	++	+++	
Normal thyroid	8	8	0	0	0	0
Follicular thyroid cancer	11	0	0	4	7	100.0
Papillary thyroid cancer	13	1	7	4	1	92.3
Anaplastic thyroid cancer	39	2	12	15	10	94.9

Table 4. Level of immunohistochemical staining for IGF-IR $\beta$  in normal thyroid, follicular, papillary and anaplastic thyroid cancer tissue from 63 human surgical samples (including specimens on tissue array and permanent pathological slides) [2].

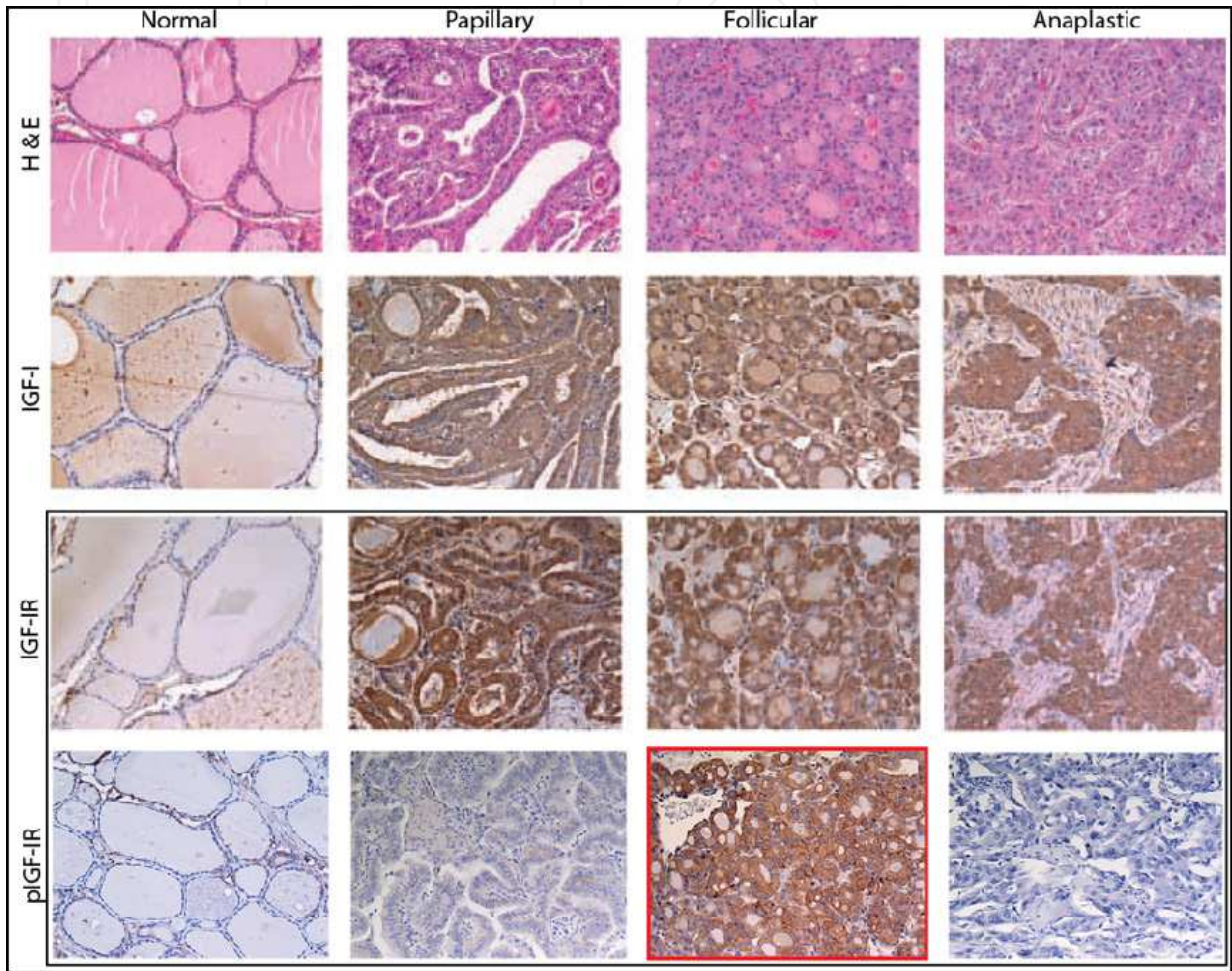


Fig. 4A. Expression of pIGF-IR $\beta$  is down regulated in majority of anaplastic and some papillary thyroid cancer specimens: Immunoperoxidase staining of thyroid tumor tissue sections to visualize expression of endogenous IGF-I, IGF-IR $\beta$  and pIGF-IR $\beta$ . The black boxed area indicates that as compared to normal thyroid tissue, PTC, FTC and ATC specimens show overexpression of IGF-IR $\beta$ , whereas expression of pIGF-IR $\beta$  is down regulated in majority of ATC and PTC specimens. In contrast pIGFIR $\beta$  expression (highlighted in red boxed specimen) is retained mostly in FTC specimens [1].

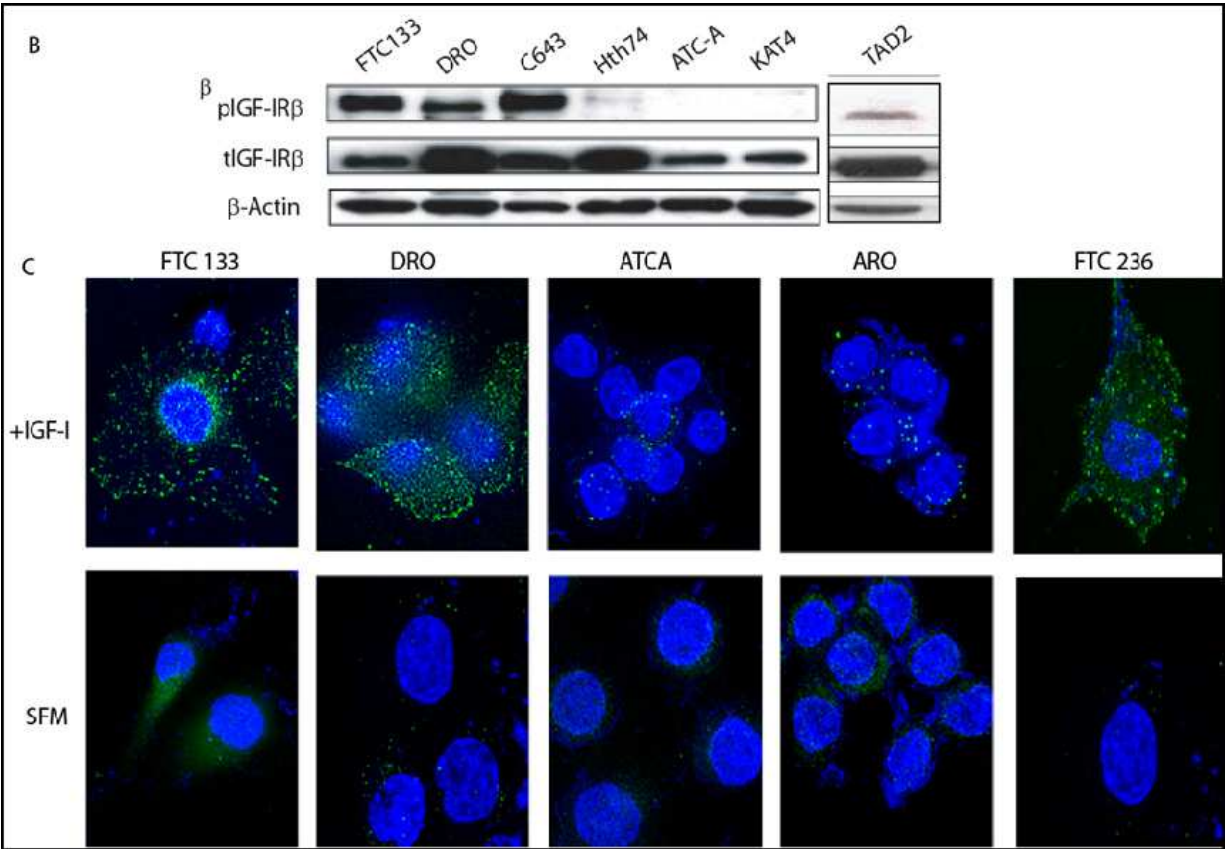


Fig. 4B. & C. IGF-IR $\beta$ /IR $\beta$  and pIGF-IR $\beta$  expression in representative thyroid cancer cell lines detected immunochemically using Western blotting (B) and Immunofluorescence (C). Total IGF-IR $\beta$  expression was detectable in all cell lines tested. pIGF-IR $\beta$  expression varied amongst cell lines and was almost undetectable in ATC cell lines. Its expression was lower in normal thyroid (TAD2) cells compared to the FTC cell lines. C) Immuno-fluorescent detection of pIGF-IR $\beta$  in FTC and ATC cell lines after stimulation with 10ng/ml IGF-I (top panels) or in serum free media (SFM). Green signal = pIGF-IR; Blue = DAPI.

**4.1 pIGF-IR expression is high in differentiated thyroid cancers but its expression is attenuated in more aggressive thyroid cancers**

Two thyroid tumor tissue arrays (TMA) containing 120 specimens on one and 84 specimens on the other, were analyzed in this study. One of the arrays also contained six pairs of normal thyroid tissue from the same patient. Detailed analysis of these tissue arrays (see Table 6 for demographics) confirmed that the pIGF-IR content of the differentiated component of the tumors was higher as compared to the matched pair of the normal tissue specimen. However, on the whole, all poorly differentiated tumor types, particularly the ATCs, showed negligible expression of pIGF-IR (Fig. 5).

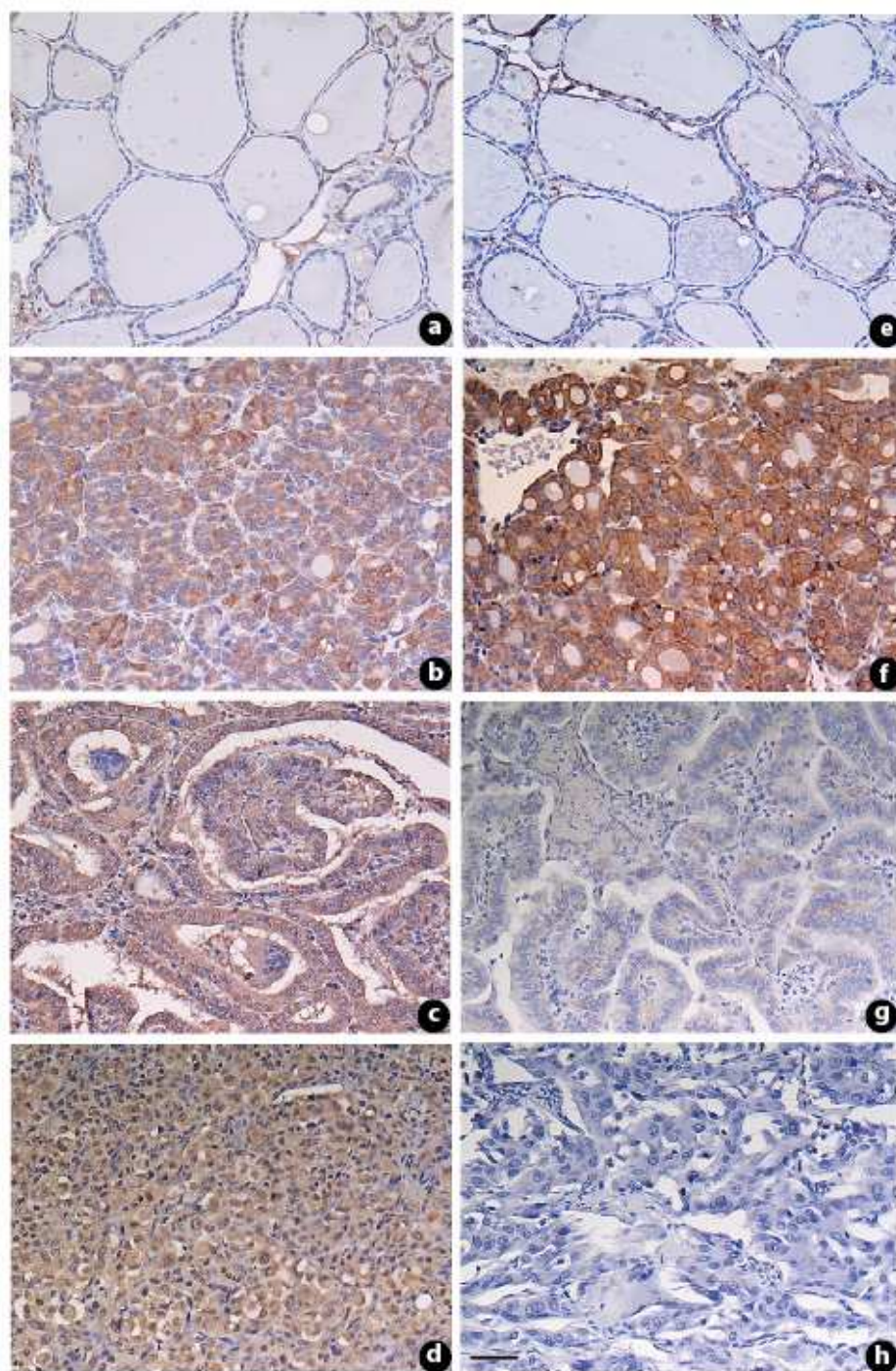


Fig. 5. Immunohistochemical analysis of IGF-IR $\beta$  and pIGF-IR $\beta$ /IR $\beta$  in histological subtypes of thyroid carcinoma: **A**. Representative paraffin-embedded sections of normal and histological subtypes of thyroid carcinoma treated with the anti-IGF-IR $\beta$  antibody (a – d) and anti-pIGF-IR $\beta$ /IR $\beta$  Ab (e-h). Panels a & e are sections from normal thyroid tissue treated with the two antibodies mentioned above. Note that the normal tissue has very low levels of IGF-IR or pIGF-IR/IR as compared to the adjacent panels showing intense staining in tumor tissues. Additionally, only follicular thyroid carcinoma samples and few papillary carcinoma were more often positive for anti-pIGF-IR $\beta$ /IR $\beta$  antibody staining even though all the tumor tissue types had detectable IGF-IR $\beta$  expression. Scale bar represents 50 $\mu$ m [1].

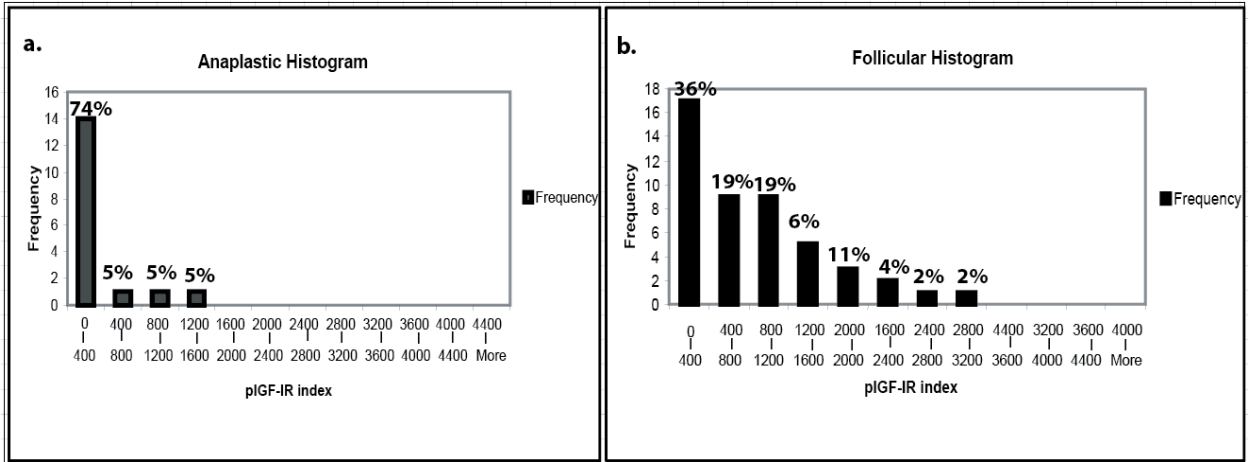


Fig. 6A. pIGF-IR $\beta$ /IR $\beta$  index of thyroid cancer specimens: Frequency distribution of pIGF-IR/IR index in a total of 17 Anaplastic (a) and 47 Follicular (b) thyroid carcinoma cases. Overall, more FTC specimens demonstrated a higher pIGF-IR $\beta$  index.

This was further substantiated by histogram analysis of all the morphological histotypes of thyroid cancer, where 74% of ATC specimens showed a pIGF-IR index below 400 as opposed to only 34% of the FTC (Fig. 6A). Furthermore, a significant difference was noted in the median pIGF-IR index of different histological subtypes of thyroid cancer ( $P<0.001$ ) (Fig. 6A). When all thyroid cancers were stratified as differentiated [FTC, PTC and Hurthle cell carcinoma (HCC)] or other thyroid cancers (ATC and MTC), the median pIGF-IR index of differentiated thyroid cancer was significantly higher than the median index of other thyroid cancers (114 vs. 63,  $P<0.001$ , Fig. 6B).

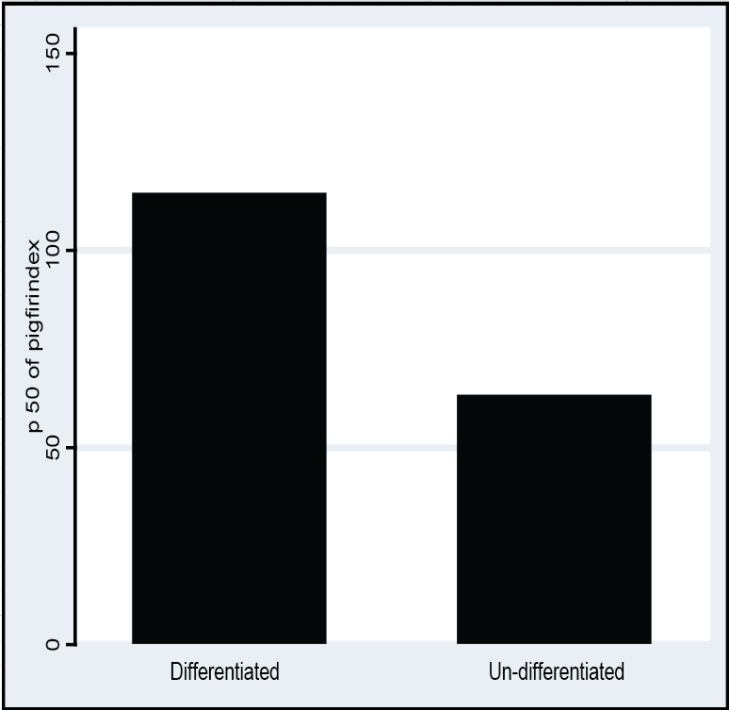


Fig. 6B. Median pIGF-IR $\beta$ /IR $\beta$  index of differentiated thyroid carcinoma was significantly higher than that of all other thyroid cancers  $p<0.001$  (Mann-Whitney test).

To make the predictive power of our analysis more significant, additional parameters such as age, tumor size, tumor grade and lymph node metastasis were analyzed along with the pIGF-IR index of the specimen.

Our data showed that when patients with PTC or FTC were stratified according to their age, the mean pIGF-IR index of differentiated thyroid cancer patients above 45 years of age was significantly lower than the mean pIGF-IR index of patients below 45 years of age. However, due to the small sample size of our study, statistical significance couldn't be reached, although, a clear trend was noted (Table 5A). No significant difference was noted in the pIGF-IR index of tumors grouped by size or stage. Furthermore, although lymph node (LN) metastasis is not a good prognostic indicator in thyroid cancer, it does indicate recurrence and local control. Accordingly, when tumors were stratified based on their LN status, our analysis indicated that patients with differentiated thyroid cancer without lymph node metastases have a significantly higher pIGF-IR index ( $P = 0.03$ ) as compared to patients with lymph node metastasis. Once again, no significant difference was noted among those patients with poorly differentiated thyroid cancer with or without lymph node metastasis ( $P = 0.12$ ) (Table 5B)[1].

	Age	Median pIGF-IR	Mean pIGF-IR	P value
Follicular	<45 yrs (7)	948	1,273	0.84
	>45 yrs (10)	708	794	
Papillary	<45 yrs (7)	912	341	0.25
	>45 yrs (4)	64	59	
Differentiated	<45 (14)	991	807	0.71
	>45 (19)	125	451	

Table 5A. pIGF-IRβ/IRβ index variability by age in differentiated thyroid cancers.

Patient group	n	Median pIGF-IRβ index	P value
Differentiated thyroid cancer with no lymph node metastasis	21	471.3	0.0329*
Differentiated thyroid cancer with lymph node metastasis	12	78.51	
Poorly differentiated thyroid cancer with no lymph node metastasis	7	37.5	0.1208
Poorly differentiated thyroid cancer with lymph node metastasis	15	69.07	

Table 5B. pIGF-IRβ/IRβ expression vs. patient outcome

Overall, low pIGF-IR expression was found to correlate with aggressive human thyroid carcinoma. It is thus likely that IGF-IR signaling may not be needed for progression of ATC as other cell signaling pathways may be activated in these cells thereby obviating the need

for intact IGF-IR signaling. Nonetheless, as both IGF-IR $\beta$  & pIGF-IR $\beta$  were up-regulated in a majority of differentiated thyroid carcinomas, we hypothesized that IGF-IR may be a viable potential target for therapy in patients with more differentiated types of thyroid cancer.

	Specimens	Controls	statistically analyzed
Total number in study	126	6	58
Tumor histology	Specimens		Gender
Anaplastic	19		8 (4M, 4F)
Follicular	47		18 (7M, 11F)
Papillary	12		11 (1M, 10F)
Medullary	22		14 (4M, 10F)
Other (Hurthle & Sarcomatoid)	26		7 (5M, 2F)
			M: Male F: Female

Table 6. Demographics of thyroid cancer patient samples used in statistical analysis of pIGF-IR index of thyroid tumor microarray (TMA)

5. Targeting IGF-IR in thyroid cancer

Targeted therapies consisting of human monoclonal antibodies against IGFBPs and the IGF-IR, or, the small molecular tyrosine kinase inhibitors (SMTKI) that target the kinase domain of IGF-IR, are a new class of pharmacological agents that have been shown to be useful in the treatment of cancers with enhanced expression and activity of IGF-IR. Pharmacological inhibition of IGF-I signaling with these therapeutic agents has been shown to significantly decrease migration, invasion, metastatic spread, and angiogenesis with little toxicity in mouse tumor models. Similarly, inhibition of IGF-IR signaling has also been reported to sensitize cancer cells to radiation and chemotherapeutic agents[48-58]. Our objective therefore, was to build upon this knowledge and investigate whether targeted therapy directed at the IGF-IR, and given in combination with chemotherapy, can be an attractive new treatment strategy for thyroid cancer[20]. Given our findings on up-regulation of components of the IGF-I signaling pathway in thyroid cancer cell lines and in human thyroid carcinoma tissue microarrays, we proceeded to test this hypothesis both *in vitro* and *in vivo*.

5.1 Choice of anti-IGF-IR compounds in clinical development

Several therapeutic agents that specifically inhibit IGF-1R but do not affect IR signaling are in preclinical and clinical development. Some of the strategies being used to interfere with IGF-1R signaling (a) reduction of IGF-1R expression by antisense nucleotides (b) siRNA or antisense RNA against IGF-IR (c) monoclonal antibodies and (d) tyrosine kinase inhibitors. Altogether, 30 different IGF-1R targeting agents are in preclinical or clinical development [59-70] (Table 3) and at least 58 active clinical trials are evaluating anti-IGF-1R targeting agents alone or in various combinations (www.clinicaltrials.gov). However, the two main strategies employed to inhibit this pathway are antibodies directed against IGF-1R or small molecule TKIs. Both approaches have their inherent strengths and weaknesses, particularly their specificity for IGF-IR and issues related to side effects like hyperglycemia. Whether sparing IR

is a good strategy or not is an important question to be considered as IR does play a role in IGF-I signaling and could compromise efficacy of anti-IGF-IR compounds. Nonetheless, we chose to evaluate the efficacy of A12 (a monoclonal Ab) and NVP-AEW541 (a SMTKI) in ATC and FTC respectively.

5.2 In vitro effects of anti - IGF-IR antibody A12 on signal transduction, cell proliferation and apoptosis of thyroid cancer cell lines

A12 is a high-affinity humanized monoclonal antibody that specifically binds to IGF-IR and blocks IGF-I and IGF-II signaling but does not block the binding of insulin to the insulin receptor. It has been shown to inhibit the growth of breast, colon, and pancreatic cancer cell lines, both *in vitro* and in subcutaneous tumors in nude mouse models by antibody-mediated blockade of ligand binding to IGF-IR. In a study of xenograft tumor model of breast, pancreas and colon cancer, A12 produced a marked increase in apoptosis with minimal toxicity [49].

In our studies, A12 was able to completely inhibit both IGF-I and IGF-II-induced phosphorylation of IGF-IR at high concentrations (100 nM) in TC cell lines (Fig 7). At lower concentrations (1 nM and 50 nM), it was able to inhibit the phosphorylation of IRS-I, Akt and MAPK. However, 10 fold more A12 was required to inhibit the IGF-2 mediated signaling (Fig. 7).

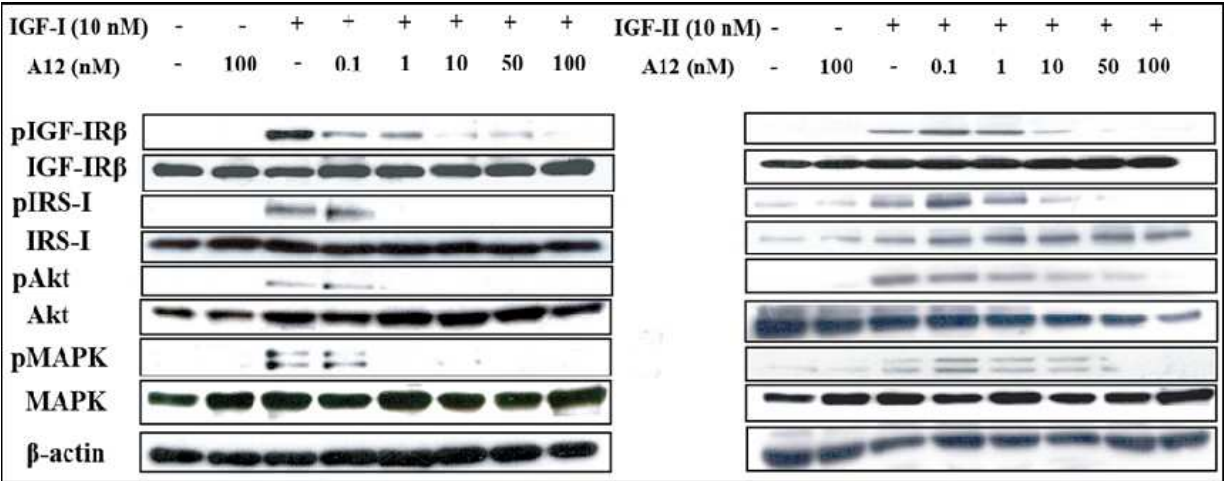


Fig. 7. Dose-dependent inhibition of IGF-1- and IGF-II-induced IGF-IRβ, IRS-I, Akt, and MAPK autophosphorylation in ARO cells after treatment with A12. Serum-starved ARO cells were treated with A12 (0-100 nM) for 2 hours and then incubated with or without IGF-I or IGF-II (10 nM) for 10 minutes. Total protein extracts were obtained to analyze IGF-IR signaling components by western blotting. Note that 10 times more A12 is required to inhibit IGF-II signaling in ARO cells [2].

Twenty-four hours after plating, the cells were treated with increasing concentrations of A12 (0-100 nM) without (A) or with (B) IGF-I stimulation for 72 hours. At the end of incubation, the inhibitory effect of A12 was measured using an MTT assay (Fig. 8).

With respect to its effect on cell proliferation, increasing the concentration of A12, with or without IGF-I, inhibited the proliferation of some TC cell lines (ARO, DRO & C643). Other TC cell lines (Hth74, KAT4 and ATC-A) were only minimally responsive to A12 treatment

(Fig. 8). To understand if this difference was due to differential induction of apoptosis, A12 treated cells were analyzed by Flowcytometry (FCM). Only minimal induction of apoptosis was observed in A12 treated cells, suggesting that growth inhibitory effects of A12 were driven through apoptosis independent pathways *in vitro*. Nonetheless, combining A12 with Irinotecan (chemotherapeutic drug of choice for head and neck cancers) was particularly useful in sensitizing ARO cells to the cytotoxic effects of Irinotecan (Fig. 9).

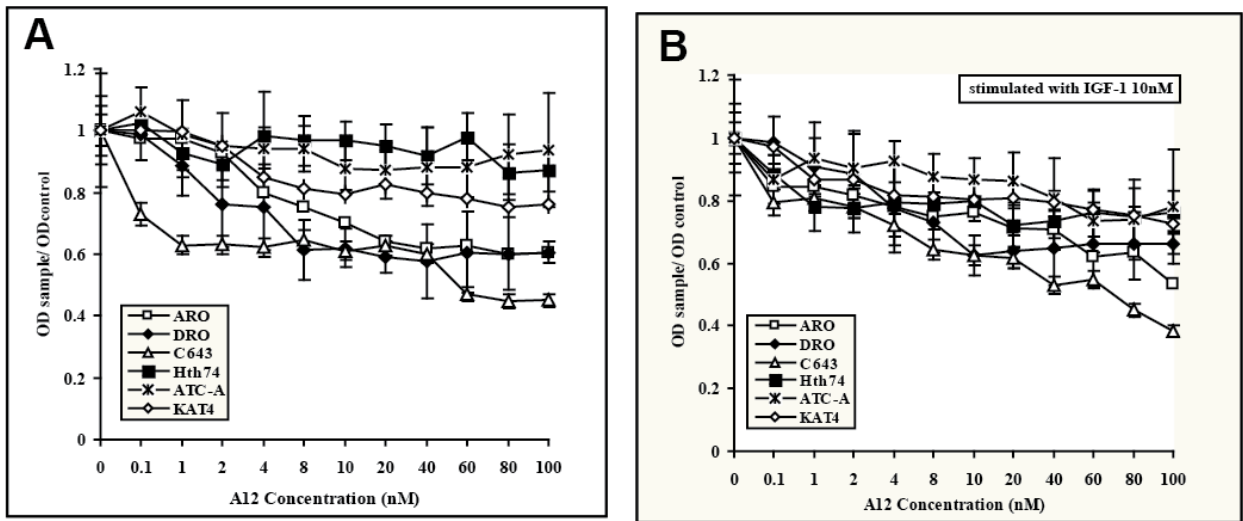


Fig. 8. Inhibition of survival and IGF-I induced proliferation by increasing concentration of A12 in ATC cell lines ARO, DRO, C643, Hth74, ATC-A, and KAT4. All ATC cell lines were plated in 96-well plates at a density of 2000 cells/well.

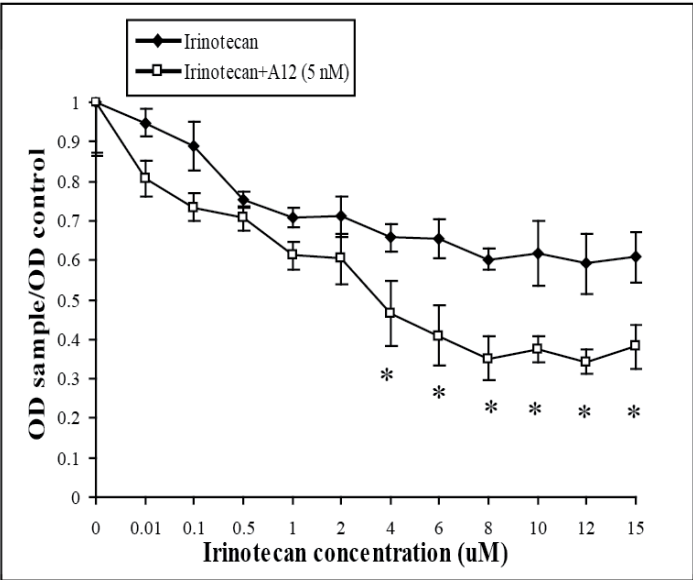


Fig. 9. Synergistic effect of A12 and Irinotecan on in vitro cell proliferation. ARO cells per well were grown in RPMI 1640 medium supplemented with 10% FBS for 24 hours. They were then treated with various concentrations of Irinotecan (0.01–15 mM) or with irinotecan with or without 5 nM A12. After a 3-day incubation period, number of metabolically active cells were determined with an MTT assay. Bars indicate mean values  $\pm$  SE,. \*P < .05 for cells treated with the combination versus vehicle-treated controls.

But, unlike Herceptin that down regulates ErbB2 receptor expression, IGF-IR expression remained unchanged in cells concomitantly treated with IGF-I and A12[2]. Similar findings have been reported for breast cancer cells[49].

### **5.3 In vivo A12 reduces tumor volume and prolongs survival in combination with irinotecan in an orthotopic nude mice model of ATC**

Since it is the anaplastic thyroid carcinoma that is associated with poor clinical outcome and some ATC cell lines showed moderate IGF-IR and pIGF-IR expression [1], preclinical efficacy of A12 antibody as a single agent and in combination with chemotherapy was first evaluated in a nude mouse model of ATC[2]. Four groups [placebo (control), A12, irinotecan, and A12 plus irinotecan] of 10 mice each were analyzed. Treatment with A12 or irinotecan alone led to a 57% and 80% decrease respectively in the tumor volumes of ARO xenografts. The differences in the mean tumor volume compared with the control group were statistically significant ( $P = 0.023$  [for A12] and  $0.002$  [irinotecan], respectively). However, the highest growth inhibition was achieved by the co-administration of A12 plus irinotecan. At the end of the 3-week treatment period, mice treated with A12 plus irinotecan showed a 93% decrease in the estimated mean tumor volumes compared with the control group ( $P = 0.001$ ). The decrease in mean tumor volumes in mice receiving combination treatment was also significantly greater than that of the groups receiving A12 or irinotecan alone ( $P < 0.01$ ) (Fig. 10A & B). A12 was well tolerated by the animals, without substantial adverse effects. The weights of the animals remained constant throughout the treatment period (data not shown) and none of the animals had to be killed before the end of the study. In the survival study, the survival rates of the mice treated with irinotecan alone and combination treatment was significantly greater than that of the mice in the control group with  $P$  values of  $0.044$  and  $0.0003$  respectively. The combination group also achieved a greater survival rate than mice treated with A12 alone ( $P = 0.004$ ). However, there was no significant improvement in the survival rates between the group treated with A12 alone and the control group ( $P = 0.356$ ) (Fig. 10C).

### **5.4 Therapeutic potential of IGF-IR specific small molecular tyrosine kinase inhibitor NVP-AEW541 in an orthotopic follicular thyroid carcinoma model**

Small molecular tyrosine kinase inhibitors are another class of anti-tumor agents frequently used to inhibit IGF-IR signaling. They inhibit both ligand independent and ligand-dependent receptor phosphorylation and do not evoke immunogenic response on repeated exposure. Due to their small size, they also exhibit good tumor penetration. NVP-AEW541 (Caymen Chemical) is one such SMTKI that is a more potent inhibitor of IGF-IR ( $IC_{50} = 0.086 \mu M$ ), even though, at high enough concentrations ( $IC_{50} = 2.3 \mu M$ ) it can also inhibit the closely related insulin receptor. Structurally, NVP-AEW541 is a pyrrolo[2,3-d]pyrimidine derivative that can abrogate IGF-I-mediated survival and colony formation in soft agar at concentrations that are consistent with inhibition of IGF-IR auto-phosphorylation *in vitro*. *In vivo*, it has also been shown to inhibit IGF-IR signaling in tumor xenografts and significantly reduce the growth of IGF-IR-driven fibrosarcomas[54]. To evaluate its efficacy in thyroid cancer, human follicular thyroid cancer cell line stably expressing a constitutively activated form of IGF-IR with a downstream luciferase reporter were injected into the thyroid glands of 8-week-old athymic mice. We found that injection of  $2.5 \times 10^5$  WRO cells was sufficient for

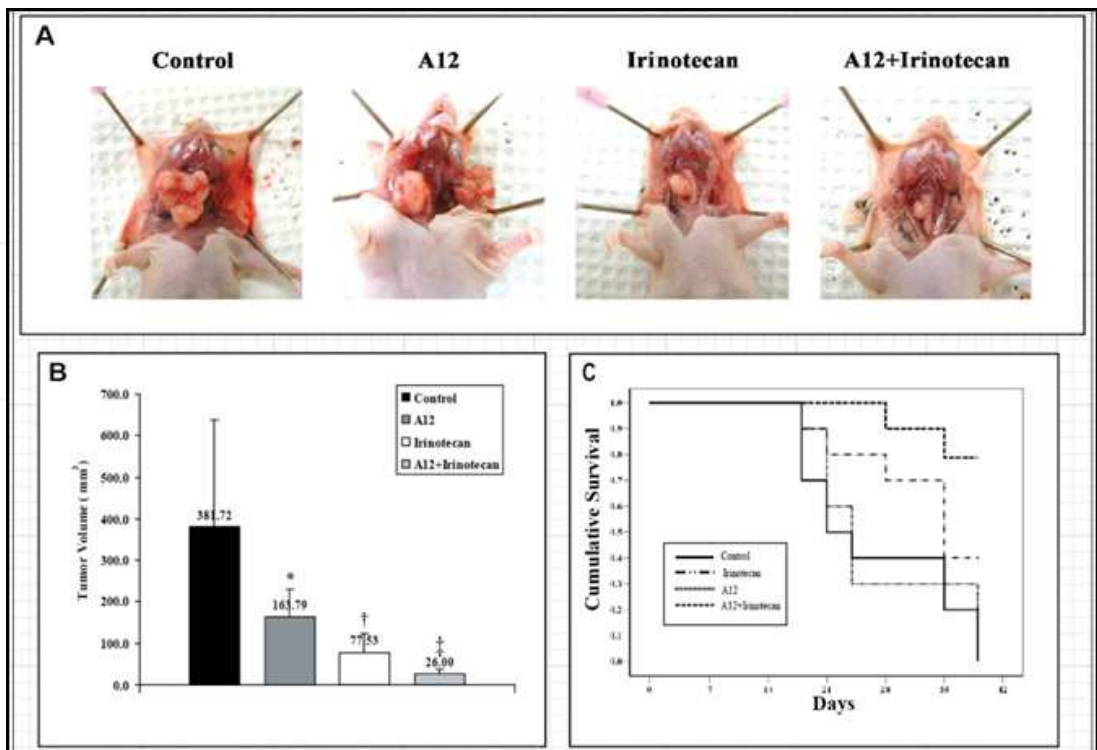


Fig. 10. In vivo antitumor effects of single drugs or simultaneous combination of irinotecan and A12 on tumor growth and survival in an orthotopic nu/nu model of ATC. ARO cells were injected into the right thyroid lobe of the mice. Four days after injection, the mice were randomized into 4 groups (10 mice in each group) and the drugs were administered as follows: irinotecan (50 mg/kg i.p. every week) or A12 (1mg/250ul/mouse 2x weekly). A) After 3 weeks of treatment, all the mice were killed, and necropsy was performed. Representative images from each group of mice are shown to highlight the effect of drugs over control. B) At the end of the growth-inhibition study, the tumors were measured in three dimensions, and the mean tumor volumes were calculated in each group.\*  $P = 0.023$ , compared with the control group; †  $P = 0.002$ , compared with the control group; ‡  $P = 0.001$ , compared with the control group; and  $P < 0.01$ , compared with the A12-alone and irinotecan-alone groups (independent t-test). C, The combined treatment of A12 plus irinotecan prolonged the survival rate in the orthotopic nude mouse ATC model. Irinotecan alone or in combination with A12 significantly increased the survival rate compared with that of the control group ( $P < 0.05$ ).

tumor development. Tumors were visualized via non-invasive real time imaging as early as 10 days post-implantation. After randomization into 3 separate groups with 10 mice in each group, they were either treated with placebo (25 mM tartaric acid solution), Irinotecan (50 mg/kg, I.P. once a week) or NVP-AEW541 (50 mg/kg PO twice daily). Real-time whole-body fluorescence imaging was carried out weekly to monitor tumor growth in response to the various treatments. After approximately three weeks, as the control group of mice became premorbid, mice from all the three groups were sacrificed and tumors harvested at necropsy. Time to premorbid condition varied between mice and was associated with primary tumor growth pattern (early local compression of the esophagus) rather than development of metastatic disease. Additionally, difficulty with oral gavage in mice with

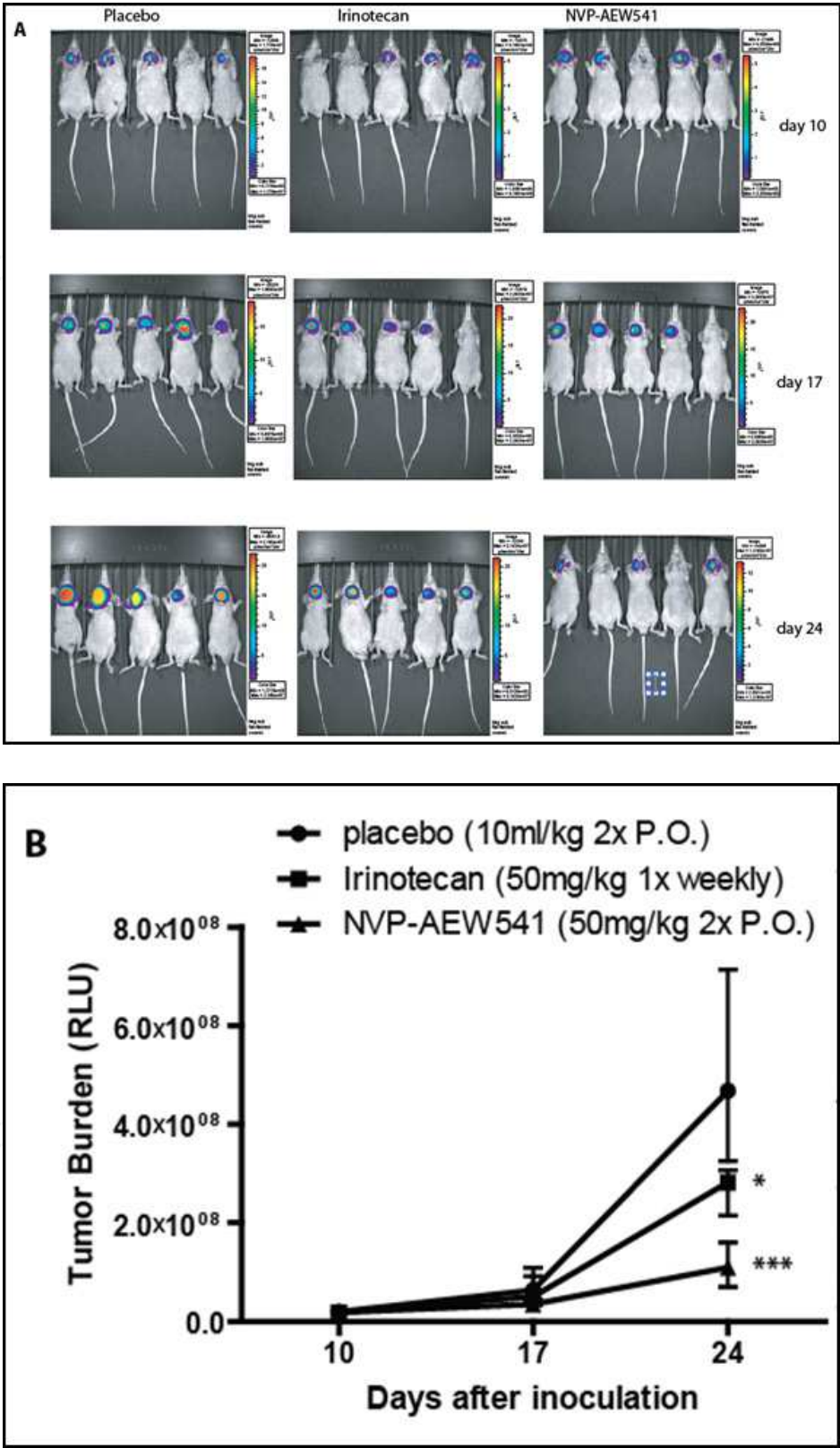


Fig. 11. Realtime bioluminescent imaging (BLI) to monitor the growth of orthotopically inoculated FTC cells treated with placebo, Irinotecan or NVP-AEW541. A) Representative images of mouse at days 10, 17, and 24 after inoculation. (B) Quantification of biochemically

measured luciferase activity (RLU), an indicator of tumor burden to assess the effect of drugs on the respective days shown in panel (A). Tumor growth was significantly inhibited in the NVP-AEW541 treated group as compared to the placebo treated group. Median and range is shown for each point on the graph. Statistics were performed by Student's t test, and significance ( $P < 0.05$ ) relative to control is noted in the graph.

tumors obstructing the esophagus also partially affected the outcome of survival in these mice. Despite the difficulties, NVP-AEW541 significantly inhibited the growth of orthotopic Wro tumors in nude mice (Fig. 11A) as compared to control or Irinotecan-treated mice (Fig. 11B). Furthermore, microvessel density (MVD) was also significantly decreased after treatment with this compound (Fig. 12) and correlated with decreased VEGF secretion by vascular endothelial growth factors (VEGF) WRO cells treated with NVP-AEW541 in an in vitro ELISA assay (see below). These experiments were conducted only once. Pictorial data has been presented from a representative group of mice and quantitative analysis is based on data obtained from 6 – 8 mice/group.

### **5.5 Both IGF-IR antibody A12 and SMTKI inhibitor NVP-AEW541 inhibit IGF-I signaling and tumor angiogenesis in orthotopic ATC and FTC models**

IGFs have been found to promote the growth, survival, and migration of tumor cells, as well as to induce the syntheses of vascular endothelial growth factors A and C and matrix metalloproteinase 2, which may favor the development of the blood supply essential for the progressive growth of primary malignancies and the development of metastases[71-73]. A recent study was conducted to determine whether anti IGF-IR therapy inhibits IGF-I signaling and tumor angiogenesis *in vivo*. Immunohistochemical analyses of ATC tumors treated with A12 or A12 and Irinotecan showed a decrease in pIGF-IR $\beta$ , pAkt, and PCNA staining and an increase in apoptosis in both the treatment groups *in vivo*[2]. These observations were in striking contrast to A12's effect *in vitro*, where treatment of ATC cell lines with A12 failed to induce an apoptotic response. A possible explanation for this discordance could be that A12's additional ability to induce antibody-dependent cell cytotoxicity (ADCC) and complement-mediated cell death (CDC) *in vivo* results in the activation of immune response and inhibition of tumor growth. Strangely enough, despite A12's ability to induce apoptosis *in vivo*, the survival rate of mice treated with A12 alone was not improved over that of the placebo-treated mice ( $p=0.578$ ). Contrarily, mice in the combination treatment group showed significant survival advantage ( $p=0.002$ ) over the mice in control group[2]. These observations suggest that anti-IGF-IR therapy when given in combination with other therapeutic strategies augments anti-tumor effects. To further determine if anti-IGF-IR therapies can be used to inhibit thyroid tumor angiogenesis, we sought to determine whether IGF-IR regulates any molecular targets of angiogenesis as has been reported for colorectal cancer cells[74]. In these studies, stimulation of IGF-IR in colorectal cells has been shown to induce the expression of VEGF to regulate development of new blood vessels[75]. Furthermore, blockade of IGF-IR led to significant down-regulation of VEGF and inhibition of tumor growth and lymph node metastasis of these tumors[76]. To test whether over-expression of IGF-IR in follicular carcinoma cells (WRO) increases VEGF secretion as reported for the colon carcinoma cells,  $5 \times 10^5$  vector transfected (WRO-puro) or wild type IGF-IR over-expressing (WRO-wt) or constitutively active IGF-IR expressing (CA-IGF-IR) WRO cells were allowed to attach and grow for

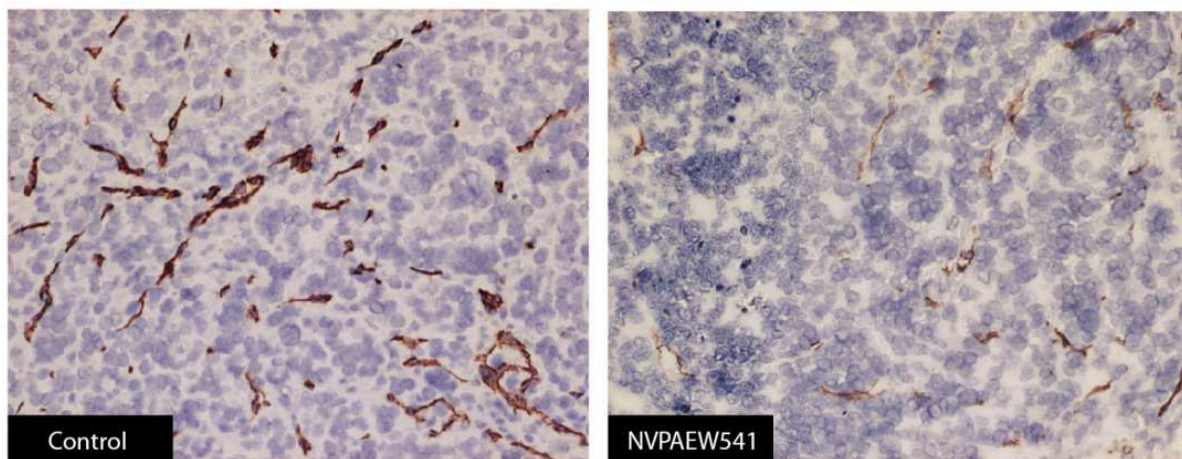


Fig. 12. Histological analysis of tumor sections from Wro-Cd8IGF-IR orthotopic tumors untreated or treated with NVP-AEW541. Tumor samples from representative animals were resected, fixed, and processed for immunohistochemistry with anti CD31 antibody. NVP-AEW541-treated samples showed noticeable reduction in angiogenesis compared to control. Magnification 200X.

24hrs. The supernatant was then replaced with 2 - 3 mL fresh 2% heat-inactivated fetal bovine serum containing culture medium and further cultured for 24 hours. The concentration of VEGF165 in each supernatant was determined using commercially available enzyme-linked immune-absorbent assay (ELISA) kit (R&D Systems, Minneapolis, MN). Culture supernatant from MDA1986 cells was used as positive control for VEGF-A secretion. Both the IGF-IR overexpressing WRO cells and the CA-IGF-IR cells secreted significantly higher levels of VEGF-A as compared to the vector control cells (WRO Puro). We further observed that the treatment of these cells with the SMTKI NVP-AEW541 partially suppressed IGF-IR induced up-regulation of VEGF secretion (Fig. 13;  $P < 0.005$  in both cases), suggesting that VEGF secretion in part may be regulated through the IGF-IR signaling pathway.

However, even though NVP-AEW541 is highly sensitive to IGF-IR, it does demonstrate inhibitory activity towards IR, MAPK and PI3K. Thus involvement of other TKIs in the process cannot be overruled. Nonetheless these data does provide credence to our hypothesis that thyroid tumor angiogenesis may be the result of enhanced VEGF secretion in IGF-IR over-expressing tumors. Additional evidence for involvement of IGF-IR in thyroid tumor angiogenesis came from our observations in A12 treated orthotopic ATC specimens. Staining of these tumors for CD31 showed a significant decrease in microvessel density especially in tumors treated with A12 alone and in tumors treated in combination with Irinotecan. Additional staining for pIGF-IR in the tumor endothelium of these tumors confirmed that this response was due to the loss of phosphorylation of IGF-IR in tumor-associated endothelium of A12-treated tumors[2]. In summary, these studies suggest that thyroid tumor angiogenesis is partially regulated through IGF-IR signaling in both ATCs and FTC orthotopic xenografts. To further confirm if human thyroid specimens showed a correlation between IGF-IR signaling and local metastasis, we measured the pIGF-IR content of human thyroid cancer specimens with and without lymph node metastasis. We observed that pIGF-IR expression when computed as an index (pIGF-IR index) varied amongst

thyroid tumors. Particularly, pIGF-IR index of thyroid tumors with lymph node metastasis was lower than for ones without lymph node metastasis, suggesting a direct role for IGF-I signaling in local thyroid tumor metastasis.

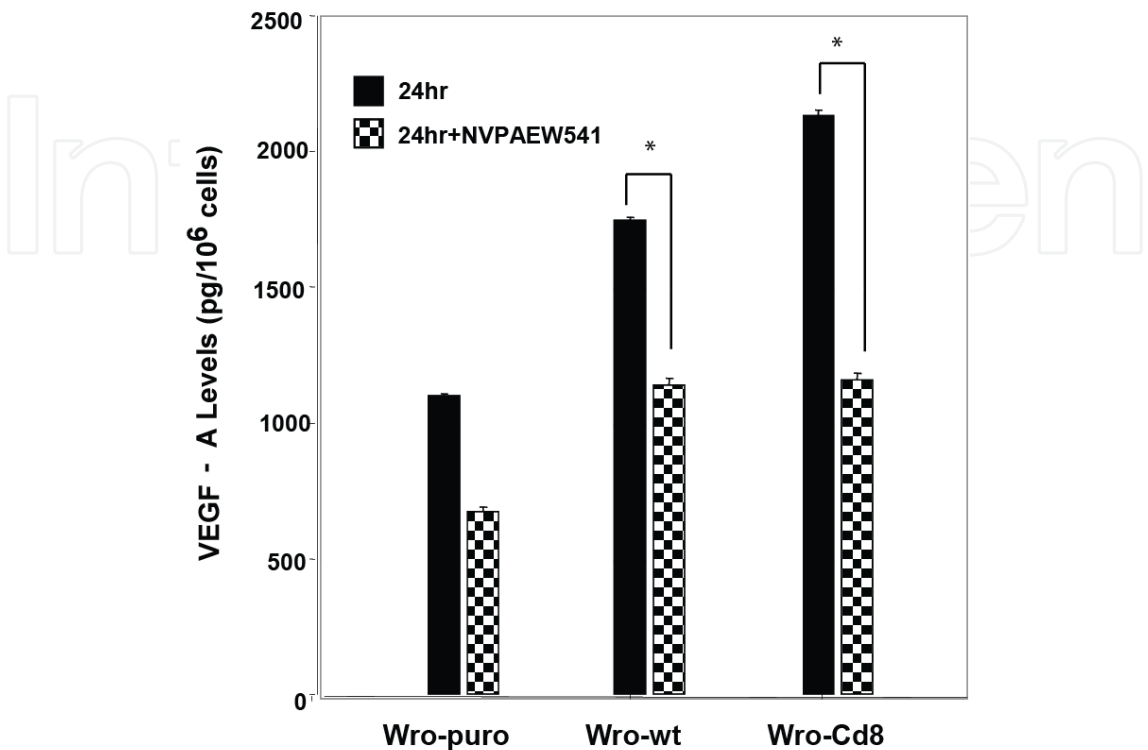


Fig. 13. Effect of NVP-AEW541 on VEGF - A secretion by follicular thyroid carcinoma cells that over express either the wt-IGF-IR or the constitutively activated IGF-IR or are vector transfected (Wro-puro).  $5 \times 10^5$  cells/ml were allowed to attach and grow for 24hrs in 6 well dishes. The supernatant was then replaced with 2 mL fresh culture medium containing 2% heat-inactivated fetal bovine serum and further cultured for 24 hours in the presence of IGF-IR inhibitor NVP-AEW541. The dose of NVP-AEW541 was predetermined using a standard MTT assay and was found to bring about 50% inhibition in cell growth at a concentration of 0.2uM. VEGF secretion was evaluated by ELISA in conditioned medium of the wro clones 24 hrs after exposing to the drug using commercially available enzyme-linked immuno-absorbent assay (ELISA) kits (R&D Systems, Minneapolis, MN). Results are presented in pg VEGF165 /10<sup>6</sup> cells/24h for control and treated samples as mean  $\pm$  STE from three separate experiments. MDA1986 cells were used as positive control for VEGF-A secretion. VEGF165 was undetectable in media without the cells (data for controls not shown)

6. Conclusions

IGF-I/IGF-IR axis plays a pivotal role in thyroid tumor progression, particularly by enhancing the angiogenic response of these tumors. Thus targeting IGF-1R signaling particularly in FTC, PTC and more differentiated ATCs could have significant therapeutic potential. Many compounds that directly target IGF-1R have now been developed and the two most investigated strategies to date have used IGF-1R tyrosine kinase inhibitors such as NVP-AEW541 and anti-IGF-1R monoclonal antibodies such as A12. We tested the specificity

of both these compounds in orthotopic models of ATC and FTC and have presented data that shows their efficacy. Furthermore, blockade of IGF-IR suppressed IGF-I signaling, induced apoptosis in vitro and in vivo. Both compounds also suppressed angiogenesis although via different mechanisms. Combining A12 treatment with standard of care chemotherapeutic drug Irinotecan enhanced the cytotoxic effects of the chemotherapeutic drug. Our results are in agreement with previously reported data in other solid tumors and suggest that blocking IGF-IR with A12 or NVP-AEW541 seems to be a potential avenue for treating thyroid cancer through their direct antitumor effects and their effects on tumor vasculature. Additionally, we reviewed additional strategies that are under clinical development or in clinical trial for targeting this axis in cancer. Nevertheless, as clinical developmental programs progress careful attention must be paid to the potential side effects of this approach, especially since IGF-I signaling plays an equally important role in cell growth, energy metabolism and differentiation. A closer look on the effect of dose and schedule on toxicity are also warranted.

## 7. Acknowledgements

We thank Dr. M.N. Younes and S.A. Jasser for help with animal surgeries and VEGF ELISA assays respectively. These studies were carried out with funds from Louisiana Cancer Research Consortium and University of Texas M.D. Anderson Cancer Center Head and Neck Spore grant P50 CA097007 and CA016672. We also thank Dr. Sugoto Chakravarty and our colleagues at Tulane University for helpful discussions.

## 8. References

- [1] Chakravarty, G., et al., Phosphorylated insulin like growth factor-I receptor expression and its clinico-pathological significance in histologic subtypes of human thyroid cancer. *Exp Biol Med* (Maywood), 2009. 234(4): p. 372-86.
- [2] Wang, Z., et al., Growth-inhibitory effects of human anti-insulin-like growth factor-I receptor antibody (A12) in an orthotopic nude mouse model of anaplastic thyroid carcinoma. *Clin Cancer Res*, 2006. 12(15): p. 4755-65.
- [3] Geetika Chakravarty, A.V.L., Jeffrey N. Myers, Essential role of Insulin like growth factor receptor signaling in transcriptional regulation of Id1 and Id2 in follicular thyroid carcinoma. *Proceedings Annual Meeting of American Association of Cancer research*, 2007.
- [4] Howlader N, N.A., Krapcho M, Neyman N, Aminou R, Waldron W, Altekruse SF, Kosary CL, Ruhl J, Tatalovich Z, Cho H, Mariotto A, Eisner MP, Lewis DR, Chen HS, Feuer EJ, Cronin KA, Edwards BK (eds) (2011) SEER Cancer Statistics Review, 1975-2008. *SEER Cancer Statistics Review*.
- [5] Sherman, S.I., Thyroid carcinoma. *Lancet*, 2003. 361(9356): p. 501-11.
- [6] Kebebew, E., et al., Anaplastic thyroid carcinoma. Treatment outcome and prognostic factors. *Cancer*, 2005. 103(7): p. 1330-5.
- [7] Kondo, T., S. Ezzat, and S.L. Asa, Pathogenetic mechanisms in thyroid follicular-cell neoplasia. *Nat Rev Cancer*, 2006. 6(4): p. 292-306.
- [8] Weinberg, R.A., How cancer arises. *Sci Am*, 1996. 275(3): p. 62-70.
- [9] Bianco, R., et al., Key cancer cell signal transduction pathways as therapeutic targets. *Eur J Cancer*, 2006. 42(3): p. 290-4.

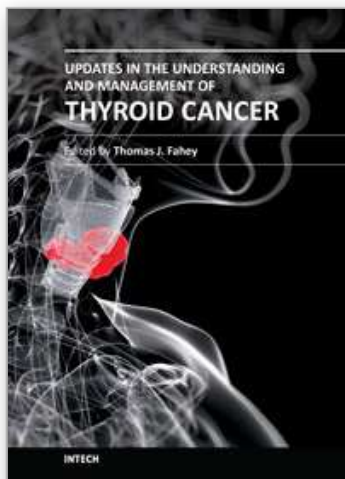
- [10] Baserga, R., The insulin-like growth factor I receptor: a key to tumor growth? *Cancer Res*, 1995. 55(2): p. 249-52.
- [11] Sell, C., R. Baserga, and R. Rubin, Insulin-like growth factor I (IGF-I) and the IGF-I receptor prevent etoposide-induced apoptosis. *Cancer Res*, 1995. 55(2): p. 303-6.
- [12] Sell, C., et al., Simian virus 40 large tumor antigen is unable to transform mouse embryonic fibroblasts lacking type 1 insulin-like growth factor receptor. *Proc Natl Acad Sci U S A*, 1993. 90(23): p. 11217-21.
- [13] Abe, S., et al., Increased expression of insulin-like growth factor i is associated with Ara-C resistance in leukemia. *Tohoku J Exp Med*, 2006. 209(3): p. 217-28.
- [14] Wan, X. and L.J. Helman, Effect of insulin-like growth factor II on protecting myoblast cells against cisplatin-induced apoptosis through p70 S6 kinase pathway. *Neoplasia*, 2002. 4(5): p. 400-8.
- [15] Wiseman, L.R., et al., Type I IGF receptor and acquired tamoxifen resistance in oestrogen-responsive human breast cancer cells. *Eur J Cancer*, 1993. 29A(16): p. 2256-64.
- [16] Chan, J.M., et al., Plasma insulin-like growth factor-I and prostate cancer risk: a prospective study. *Science*, 1998. 279(5350): p. 563-6.
- [17] Hankinson, S.E., et al., Circulating concentrations of insulin-like growth factor-I and risk of breast cancer. *Lancet*, 1998. 351(9113): p. 1393-6.
- [18] Ma, J., et al., Prospective study of colorectal cancer risk in men and plasma levels of insulin-like growth factor (IGF)-I and IGF-binding protein-3. *J Natl Cancer Inst*, 1999. 91(7): p. 620-5.
- [19] Yu, H., et al., Plasma levels of insulin-like growth factor-I and lung cancer risk: a case-control analysis. *J Natl Cancer Inst*, 1999. 91(2): p. 151-6.
- [20] Baserga, R., Targeting the IGF-1 receptor: from rags to riches. *Eur J Cancer*, 2004. 40(14): p. 2013-5.
- [21] Scartozzi M, B.M., Maccaroni E, Giampieri R, Del Prete M, Berardi R, Cascinu S, State of the art and future perspectives for the use of insulin-like growth factor receptor 1 (IGF-1R) targeted treatment strategies in solid tumors. *Discov Medicine*, 2011. 57: p. 144-53.
- [22] Ullrich, A., et al., Insulin-like growth factor I receptor primary structure: comparison with insulin receptor suggests structural determinants that define functional specificity. *Embo J*, 1986. 5(10): p. 2503-12.
- [23] Butler, A.A., et al., Insulin-like growth factor-I receptor signal transduction: at the interface between physiology and cell biology. *Comp Biochem Physiol B Biochem Mol Biol*, 1998. 121(1): p. 19-26.
- [24] Samani, A.A. and P. Brodt, The receptor for the type I insulin-like growth factor and its ligands regulate multiple cellular functions that impact on metastasis. *Surg Oncol Clin N Am*, 2001. 10(2): p. 289-312, viii.
- [25] Laustsen, P.G., et al., Essential role of insulin and insulin-like growth factor 1 receptor signaling in cardiac development and function. *Mol Cell Biol*, 2007. 27(5): p. 1649-64.
- [26] Liu, J.P., et al., Mice carrying null mutations of the genes encoding insulin-like growth factor I (Igf-1) and type 1 IGF receptor (Igf1r). *Cell*, 1993. 75(1): p. 59-72.
- [27] Russo, V.C., et al., The insulin-like growth factor system and its pleiotropic functions in brain. *Endocr Rev*, 2005. 26(7): p. 916-43.
- [28] LeRoith, D., et al., Molecular and cellular aspects of the insulin-like growth factor I receptor. *Endocr Rev*, 1995. 16(2): p. 143-63.

- [29] Ferry, R.J., Jr., R.W. Cerri, and P. Cohen, Insulin-like growth factor binding proteins: new proteins, new functions. *Horm Res*, 1999. 51(2): p. 53-67.
- [30] Kelijman, M., Age-related alterations of the growth hormone/insulin-like-growth-factor I axis. *J Am Geriatr Soc*, 1991. 39(3): p. 295-307.
- [31] MacDonald, R.G., et al., A single receptor binds both insulin-like growth factor II and mannose-6-phosphate. *Science*, 1988. 239(4844): p. 1134-7.
- [32] Clemmons, D.R., Role of insulin-like growth factor binding proteins in controlling IGF actions. *Mol Cell Endocrinol*, 1998. 140(1-2): p. 19-24.
- [33] Rosen, O.M., After insulin binds. *Science*, 1987. 237(4821): p. 1452-8.
- [34] Steele-Perkins, G., et al., Expression and characterization of a functional human insulin-like growth factor I receptor. *J Biol Chem*, 1988. 263(23): p. 11486-92.
- [35] Baserga, R., F. Peruzzi, and K. Reiss, The IGF-1 receptor in cancer biology. *Int J Cancer*, 2003. 107(6): p. 873-7.
- [36] Gydee, H., et al., Differentiated thyroid carcinomas from children and adolescents express IGF-I and the IGF-I receptor (IGF-I-R). Cancers with the most intense IGF-I-R expression may be more aggressive. *Pediatr Res*, 2004. 55(4): p. 709-15.
- [37] Maiorano, E., et al., Insulin-like growth factor 1 expression in thyroid tumors. *Appl Immunohistochem Mol Morphol*, 2000. 8(2): p. 110-9.
- [38] Yashiro, T., et al., Expression of insulin-like growth factor receptors in primary human thyroid neoplasms. *Acta Endocrinol (Copenh)*, 1989. 121(1): p. 112-20.
- [39] Kornprat, P., et al., Expression of IGF-I, IGF-II, and IGF-IR in gallbladder carcinoma. A systematic analysis including primary and corresponding metastatic tumours. *J Clin Pathol*, 2006. 59(2): p. 202-6.
- [40] Parker, A.S., et al., High expression levels of insulin-like growth factor-I receptor predict poor survival among women with clear-cell renal cell carcinomas. *Hum Pathol*, 2002. 33(8): p. 801-5.
- [41] Burikhanov, R., et al., Thyrotropin via cyclic AMP induces insulin receptor expression and insulin Co-stimulation of growth and amplifies insulin and insulin-like growth factor signaling pathways in dog thyroid epithelial cells. *J Biol Chem*, 1996. 271(46): p. 29400-6.
- [42] Deleu, S., et al., IGF-1 or insulin, and the TSH cyclic AMP cascade separately control dog and human thyroid cell growth and DNA synthesis, and complement each other in inducing mitogenesis. *Mol Cell Endocrinol*, 1999. 149(1-2): p. 41-51.
- [43] Van Keymeulen, A., J.E. Dumont, and P.P. Roger, TSH induces insulin receptors that mediate insulin costimulation of growth in normal human thyroid cells. *Biochem Biophys Res Commun*, 2000. 279(1): p. 202-7.
- [44] Eggo, M.C., L.K. Bachrach, and G.N. Burrow, Interaction of TSH, insulin and insulin-like growth factors in regulating thyroid growth and function. *Growth Factors*, 1990. 2(2-3): p. 99-109.
- [45] Williams, D.W., E.D. Williams, and D. Wynford-Thomas, Evidence for autocrine production of IGF-1 in human thyroid adenomas. *Mol Cell Endocrinol*, 1989. 61(1): p. 139-43.
- [46] Schillaci, R., et al., Autocrine/paracrine involvement of insulin-like growth factor-I and its receptor in chronic lymphocytic leukaemia. *Br J Haematol*, 2005. 130(1): p. 58-66.
- [47] Vella, V., et al., A novel autocrine loop involving IGF-II and the insulin receptor isoform-A stimulates growth of thyroid cancer. *J Clin Endocrinol Metab*, 2002. 87(1): p. 245-54.

- [48] Zhang, H. and D. Yee, The therapeutic potential of agents targeting the type I insulin-like growth factor receptor. *Expert Opin Investig Drugs*, 2004. 13(12): p. 1569-77.
- [49] Burtrum, D., et al., A fully human monoclonal antibody to the insulin-like growth factor I receptor blocks ligand-dependent signaling and inhibits human tumor growth in vivo. *Cancer Res*, 2003. 63(24): p. 8912-21.
- [50] Mitsiades, C.S., et al., Inhibition of the insulin-like growth factor receptor-1 tyrosine kinase activity as a therapeutic strategy for multiple myeloma, other hematologic malignancies, and solid tumors. *Cancer Cell*, 2004. 5(3): p. 221-30.
- [51] Warshamana-Greene, G.S., et al., The insulin-like growth factor-I receptor kinase inhibitor, NVP-ADW742, sensitizes small cell lung cancer cell lines to the effects of chemotherapy. *Clin Cancer Res*, 2005. 11(4): p. 1563-71.
- [52] Maloney, E.K., et al., An anti-insulin-like growth factor I receptor antibody that is a potent inhibitor of cancer cell proliferation. *Cancer Res*, 2003. 63(16): p. 5073-83.
- [53] Garcia-Echeverria, C., et al., In vivo antitumor activity of NVP-AEW541-A novel, potent, and selective inhibitor of the IGF-IR kinase. *Cancer Cell*, 2004. 5(3): p. 231-9.
- [54] Scotlandi, K., et al., Antitumor activity of the insulin-like growth factor-I receptor kinase inhibitor NVP-AEW541 in musculoskeletal tumors. *Cancer Res*, 2005. 65(9): p. 3868-76.
- [55] Benini, S., et al., Inhibition of insulin-like growth factor I receptor increases the antitumor activity of doxorubicin and vincristine against Ewing's sarcoma cells. *Clin Cancer Res*, 2001. 7(6): p. 1790-7.
- [56] Cohen, B.D., et al., Combination therapy enhances the inhibition of tumor growth with the fully human anti-type 1 insulin-like growth factor receptor monoclonal antibody CP-751,871. *Clin Cancer Res*, 2005. 11(5): p. 2063-73.
- [57] Girnita, A., et al., Cyclolignans as inhibitors of the insulin-like growth factor-1 receptor and malignant cell growth. *Cancer Res*, 2004. 64(1): p. 236-42.
- [58] Goetsch, L., et al., A recombinant humanized anti-insulin-like growth factor receptor type I antibody (h7C10) enhances the antitumor activity of vinorelbine and anti-epidermal growth factor receptor therapy against human cancer xenografts. *Int J Cancer*, 2005. 113(2): p. 316-28.
- [59] Bible KC, S.V., Molina JR, Smallridge RC, Maples WJ, Menefee ME, Rubin J, Sideras K, Morris JC 3rd, McIver B, Burton JK, Webster KP, Bieber C, Traynor AM, Flynn PJ, Goh BC, Tang H, Ivy SP, Erlichman C, Efficacy of pazopanib in progressive, radioiodine-refractory, metastatic differentiated thyroid cancers: results of a phase 2 consortium study. *Lancet Oncol.*, 2010. 11(10): p. 962-72.
- [60] Broutin, S., et al., Identification of soluble candidate biomarkers of therapeutic response to sunitinib in medullary thyroid carcinoma in preclinical models. *Clin Cancer Res*, 2011. 17(7): p. 2044-54.
- [61] Carr, L.L., et al., Phase II study of daily sunitinib in FDG-PET-positive, iodine-refractory differentiated thyroid cancer and metastatic medullary carcinoma of the thyroid with functional imaging correlation. *Clin Cancer Res*, 2010. 16(21): p. 5260-8.
- [62] Cohen, E.E., et al., Axitinib is an active treatment for all histologic subtypes of advanced thyroid cancer: results from a phase II study. *J Clin Oncol*, 2008. 26(29): p. 4708-13.
- [63] Duntas, L.H. and R. Bernardini, Sorafenib: rays of hope in thyroid cancer. *Thyroid*, 2010. 20(12): p. 1351-8.
- [64] Ha, H.T., et al., A phase II study of imatinib in patients with advanced anaplastic thyroid cancer. *Thyroid*, 2010. 20(9): p. 975-80.

- [65] Kapiteijn, E., et al., New treatment modalities in advanced thyroid cancer. *Ann Oncol*, 2011.
- [66] Lam, E.T., et al., Phase II clinical trial of sorafenib in metastatic medullary thyroid cancer. *J Clin Oncol*, 2010. 28(14): p. 2323-30.
- [67] Pennell, N.A., et al., A phase II study of gefitinib in patients with advanced thyroid cancer. *Thyroid*, 2008. 18(3): p. 317-23.
- [68] Robinson BG, P.-A.L., Krebs A, Vasselli J, Haddad R., Vandetanib (100 mg) in patients with locally advanced or metastatic hereditary medullary thyroid cancer. *J Clin Endocrinol Metab.*, 2010. 95(6): p. 2664-71.
- [69] Rosen, L.S., et al., Safety, pharmacokinetics, and efficacy of AMG 706, an oral multikinase inhibitor, in patients with advanced solid tumors. *J Clin Oncol*, 2007. 25(17): p. 2369-76.
- [70] Wells SA, J., Gosnell JE, Gagel RF, Moley J, Pfister D, Sosa JA, Skinner M, Krebs A, Vasselli J, and Schlumberger, M., Vandetanib for the treatment of patients with locally advanced or metastatic hereditary medullary thyroid cancer. *J Clin Oncol*, 2010. 28 p. 767-772.
- [71] Han, R.N., et al., Insulin-like growth factor-I receptor-mediated vasculogenesis/angiogenesis in human lung development. *Am J Respir Cell Mol Biol*, 2003. 28(2): p. 159-69.
- [72] Delafontaine, P., Y.H. Song, and Y. Li, Expression, regulation, and function of IGF-1, IGF-1R, and IGF-1 binding proteins in blood vessels. *Arterioscler Thromb Vasc Biol*, 2004. 24(3): p. 435-44.
- [73] Zhang, D., A.A. Samani, and P. Brodt, The role of the IGF-I receptor in the regulation of matrix metalloproteinases, tumor invasion and metastasis. *Horm Metab Res*, 2003. 35(11-12): p. 802-8.
- [74] Hakam, A., et al., Expression of insulin-like growth factor-1 receptor in human colorectal cancer. *Hum Pathol*, 1999. 30(10): p. 1128-33.
- [75] Akagi, Y., et al., Regulation of vascular endothelial growth factor expression in human colon cancer by insulin-like growth factor-I. *Cancer Res*, 1998. 58(17): p. 4008-14.
- [76] Reinmuth, N., et al., Blockade of insulin-like growth factor I receptor function inhibits growth and angiogenesis of colon cancer. *Clin Cancer Res*, 2002. 8(10): p. 3259-69.

IntechOpen



## **Updates in the Understanding and Management of Thyroid Cancer**

Edited by Dr. Thomas J. Fahey

ISBN 978-953-51-0299-1

Hard cover, 306 pages

**Publisher** InTech

**Published online** 21, March, 2012

**Published in print edition** March, 2012

### **How to reference**

In order to correctly reference this scholarly work, feel free to copy and paste the following:

Geetika Chakravarty and Debasis Mondal (2012). Insulin-Like Growth Factor Receptor Signaling in Thyroid Cancers: Clinical Implications and Therapeutic Potential, Updates in the Understanding and Management of Thyroid Cancer, Dr. Thomas J. Fahey (Ed.), ISBN: 978-953-51-0299-1, InTech, Available from: <http://www.intechopen.com/books/updates-in-the-understanding-and-management-of-thyroid-cancer/insulin-like-growth-factor-receptor-signaling-in-thyroid-cancers-clinical-implications-and-therapeut>

**INTECH**  
open science | open minds

#### **InTech Europe**

University Campus STeP Ri  
Slavka Krautzeka 83/A  
51000 Rijeka, Croatia  
Phone: +385 (51) 770 447  
Fax: +385 (51) 686 166  
[www.intechopen.com](http://www.intechopen.com)

#### **InTech China**

Unit 405, Office Block, Hotel Equatorial Shanghai  
No.65, Yan An Road (West), Shanghai, 200040, China  
中国上海市延安西路65号上海国际贵都大饭店办公楼405单元  
Phone: +86-21-62489820  
Fax: +86-21-62489821

INTECHOPEN

© 2012 The Author(s). Licensee IntechOpen. This is an open access article distributed under the terms of the [Creative Commons Attribution 3.0 License](https://creativecommons.org/licenses/by/3.0/), which permits unrestricted use, distribution, and reproduction in any medium, provided the original work is properly cited.

IntechOpen

IntechOpen