

# We are IntechOpen, the world's leading publisher of Open Access books Built by scientists, for scientists

6,900

Open access books available

186,000

International authors and editors

200M

Downloads

Our authors are among the

154

Countries delivered to

TOP 1%

most cited scientists

12.2%

Contributors from top 500 universities



WEB OF SCIENCE™

Selection of our books indexed in the Book Citation Index  
in Web of Science™ Core Collection (BKCI)

Interested in publishing with us?  
Contact [book.department@intechopen.com](mailto:book.department@intechopen.com)

Numbers displayed above are based on latest data collected.  
For more information visit [www.intechopen.com](http://www.intechopen.com)



# Pathogenesis of Renovascular Hypertension: Challenges and Controversies

Blake Fechtel, Stella Hartono and Joseph P. Grande  
*Mayo Clinic,*  
*USA*

## 1. Introduction

With an aging population, renovascular hypertension has become a major public health problem (Safian & Textor, 2001). Although various forms of fibromuscular disease of the renal arteries and/or traumatic disruption of renal vessels are the most common cause of RVH among the younger individuals, atherosclerotic renal artery disease (ARAD) is the most common lesion producing hypertension by far (Garovic & Textor, 2005). ARAD is present in over 6.8% of individuals over 65 years of age and is found in up to 49.1% of patients with coronary artery disease or aortoiliac disease (Iglesias et al. 2000; Valabhji et al. 2000; Hansen et al. 2002; Rihal et al. 2002; Weber-Mzell et al. 2002; Textor 2003). Although many patients with asymptomatic renovascular disease do not develop progressive renal dysfunction, overall morbidity and mortality is significantly increased (Chabova et al. 2000; Textor 2002; Textor 2003; Textor 2003; Foley et al. 2005; Foley et al. 2005). On the other hand, some studies suggest that from 10% to 40% of elderly hypertensive patients with newly discovered end stage renal disease and no identifiable parenchymal renal disease have significant RAS (Textor and Wilcox 2001). As in other forms of renal disease, the severity of interstitial fibrosis, tubular atrophy, interstitial inflammation, and glomerular sclerosis are important predictors of renal outcome (Wright et al. 2001). It has been postulated that this acquired tubulointerstitial injury may contribute to at least some forms of essential hypertension (Raghow 1994). Mechanisms underlying vascular and renal dysfunction in RAS have not been well delineated, despite intense study (Textor 2004). This information is essential for the development of therapies – surgical or medical – to treat RAS.

The hallmark of RVH arising from unilateral RAS is atrophy of the stenotic kidney and compensatory hyperplasia/hypertrophy of the contralateral kidney. Although this compensatory hypertrophy serves an adaptive function, this process may render the contralateral kidney more susceptible to other injuries (due to diabetes, glomerulonephritis, etc.) (Wenzel et al. 2002). Although the corresponding histologic, hemodynamic, and tubular alterations in the stenotic and contralateral kidneys have been superficially described in experimental animals, mechanisms underlying these alterations and the identification of markers that predict response to therapy have not been well defined. In particular, the stage in evolution of RAS at which the atrophic changes in the stenotic kidney preclude recovery of renal function after revascularization is not known. This lack of basic mechanistic knowledge is underscored by the variable response of RAS to surgical revascularization; significant

improvement in blood pressure control and recovery of renal function is achieved in only about half of patients, with approximately one-quarter showing no significant changes, and up to one-quarter of patients developing progressive deterioration of renal function (Textor and Wilcox 2001; Textor 2003; Textor 2004). Furthermore, angiotensin-converting enzyme (ACE) inhibitors or angiotensin receptor blockers potentiate hypoperfusion of the stenotic kidney, but have been advocated to prevent deterioration of function in the contralateral kidney (Mann et al. 2001; Schoolwerth et al. 2001). The stage during development of RVH and circumstances in which this treatment should be initiated are not known. This lack of understanding of basic mechanisms underlying the development of human RVH has prompted the development of animal models to address this issue.

### 1.1 Animal model of renovascular disease

The classic “Goldblatt” 2K1C rat model of RAS has been extensively used to model human RVH (Goldblatt et al. 1934). In the stenotic kidney, reduced renal perfusion stimulates renin secretion through the renal baroreceptor system, leading to increased plasma levels of angiotensin II (A-II), provoking systemic hypertension (Martinez-Maldonado 1991). A-II may increase blood pressure directly or through elaboration of other vasoconstrictors (such as endothelin, thromboxanes, etc.); aldosterone promotes sodium and water retention and secondarily suppresses renin release. Over time, secondary structural damage occurs to the kidneys, vessels, and other end organs. In this chronic phase, the role of A-II in maintaining elevated blood pressure is not clear, as this phase no longer completely responds to ACE inhibitor therapy. In this chronic phase, the renal damage and endothelial dysfunction may be associated with near-normal renin and A-II levels (Okamura et al. 1986; Carretero and Scicli 1991). Indeed, lack of response to A-II inhibition in experimental animals with sustained RVH may predict lack of response to surgical intervention to remove the RAS (Pipinos et al. 1998).

In the 2K1C model, the weight of the stenotic kidney tends to be lower than that of normal or sham-treated controls, indicating that the kidney has undergone atrophy. The weight of the contralateral kidney is higher than that of normal controls, indicative of a hypertrophic/hyperplastic response. Histopathologic alterations in this model are variable, and probably depend upon the extent of blood pressure elevation. As originally described, the “Goldblatt” 2K1C is a model of accelerated, or “malignant” hypertension, with mean systolic blood pressures >200 mmHg (Goldblatt et al. 1934; Wilson and Byrom 1939; Wilson and Byrom 1940). Under these conditions, the contralateral kidney, despite low renin expression, develops interstitial fibrosis, tubular atrophy, interstitial inflammation, glomerulosclerosis, and hyalinosis (Mai et al. 1993; Sebekova et al. 1998; Kobayashi et al. 1999; Gauer et al. 2003). These chronic tubulointerstitial alterations are associated with increased TGF- $\beta$  expression (Wenzel et al. 2003). Reported histopathologic alterations in the stenotic kidney are variable, and range from minimal alterations (Eng et al. 1994) to focal interstitial fibrosis and tubular atrophy without significant glomerulosclerosis (Wenzel et al. 2002).

In a rat 2K1C model that develops moderate hypertension (mean arterial pressure 158 mmHg), atrophy of the stenotic kidney and hypertrophy of the contralateral kidney is observed. The stenotic kidney shows increased staining for renin associated with interstitial fibrosis and tubular atrophy, with minimal alterations observed in the contralateral kidney (Richter et al. 2004). In this model, COX-2 inhibitors significantly reduce interstitial fibrosis in the stenotic kidney (Richter et al. 2004).

The 2K1C model has been established in mice using a clip of 0.12 mm (Wiesel et al. 1997). Four weeks after clipping, these investigators reported that 2K1C hypertensive mice exhibited blood pressure approximately 20 mm Hg higher than their sham operated controls. We have recently defined the histopathologic alterations connected with renal artery stenosis in animal model (Figure 1) (Cheng et al., 2009) and human (Keddis et al., 2010). In a murine model of 2K1C of RVH, we found that both the clipped and the contralateral kidney underwent minimal histopathological alterations during the first two weeks following surgery. Subsequently, the clipped kidney underwent atrophy, with generalized tubular atrophy, interstitial fibrosis and focal mononuclear infiltrates, whereas the contralateral kidney underwent hypertrophy/hyperplasia with minimal histopathologic alterations (figure 2). We propose that the murine 2K1C model is a good model of renovascular disease in humans with moderate hypertension. These animal models have helped to elucidate and suggest which cytokines and pathways are involved in RVH. Of these, the renin-angiotensin-aldosterone system, long known to have effects on the hemodynamics of RAS, is becoming more interesting for the inflammatory effects it causes as well.

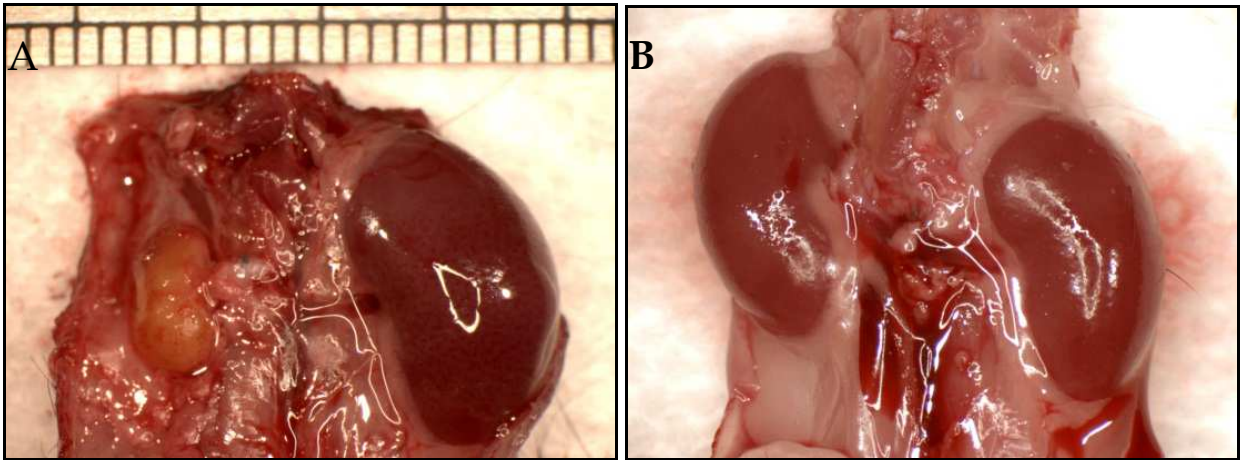


Fig. 1. Gross picture of the stenotic and contralateral kidney of mice (A) after placement of renal artery clip, the 2K1C model, compared to (B) sham procedure.

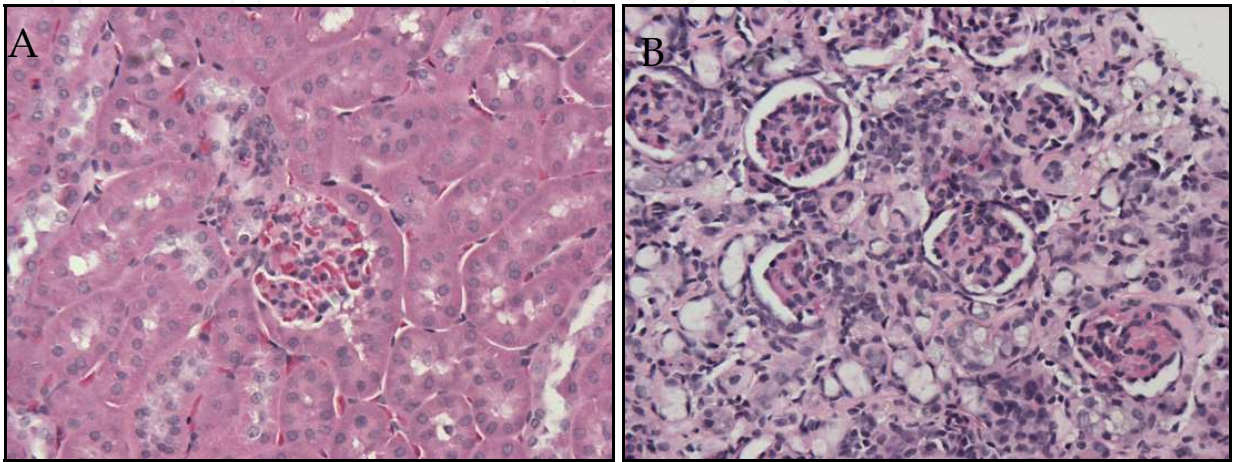


Fig. 2. Glomerular appearance of the (A) contralateral and (B) stenotic kidney with H&E staining.



## 1.2 The Renin-Angiotensin System and renovascular disease

Though its normal function is to preserve organ perfusion by regulating sodium and water balance, extracellular fluid volume and cardiac activity, the Renin-Angiotensin-Aldosterone System (RAAS) also plays an integral part in RVH. The RAAS has been found to be significantly activated in the presence of RAS. It is known that the increase in blood pressure caused by the RAAS has significant detrimental effects on the body, but it may also play a number of other roles in the development and progress of RVH.

Renin is made primarily by the juxtaglomerular cells in the Juxtaglomerular apparatus in response to 1) low pressure in the afferent renal artery, 2) sympathetic nervous system activity 3) A-II levels and 4) low sodium delivered to the macula densa in the distal convoluted tubule of the nephron. Other signals, such as potassium concentration, atrial natriuretic peptide and endothelin also modulate renin synthesis. Renin enzymatically converts angiotensinogen, made in the liver, to angiotensin I. ACE, synthesized primarily in the lungs (though also in other tissues), then converts angiotensin I to A-II, a significantly biologically active molecule. A-II, in addition to its numerous tissue effects, induces the synthesis of aldosterone in the zona glomerulosa of the adrenal medulla, which then acts on mineralocorticoid receptors throughout the body, though when considering RAS, their most notable function is in the kidney (Laragh et al., 1992). This pathway is also located completely within other organs, including, the kidney. The proximal tubule, interstitium and medulla of the kidney have higher-than-systemic concentrations of A-II, because of local synthesis, which allows it to act in a paracrine function (Johnston et al., 1992). A-II and aldosterone can also be synthesized through an ACE-independent pathway, which is what allows for the return to normal A-II levels in the presence of ACE inhibition. This effect is also particularly prominent in the kidneys, where an estimated 40% of renally-synthesized A-II does not rely on ACE (Hollenberg, 1999).

A-II acts on 2 different receptors (angiotensin receptor type 1, or AT-1, and angiotensin receptor type 2, or AT-2) producing very different biological responses. Of these, AT-1 appears to play the most significant role in renal vascular disease (AT-2 is mostly known for its role in fetal organ development). Stimulation of the AT-1 receptor is best known for its systemic vasoconstrictive effects, and its vasoconstrictive effects on the efferent renal arteriole. The former causes general rises in systolic blood pressure, while the latter decreases renal plasma flow, but increases glomerular filtration fraction. AT-1 stimulation also causes salt-retention through a number of mechanisms, increasing blood pressure even further (Dzau & Re, 1994; Liu & Cogan, 1989; Brewster & Perazella, 2004). A-II also mediates non-hemodynamic effects. A-II has the ability to promote fibrosis through a number of mechanisms, including induction of collagen synthesis, inhibition of collagen-cleaving proteases, stimulation of the secretion of platelet-derived growth factor, and, most interestingly, direct stimulation of TGF- $\beta$  receptor type II (Luft, 2003; Wolf, 2000). AT-1 stimulation also has the ability to promote fibrosis by up-regulating expression and synthesis of NF- $\kappa$ B and thus TGF- $\beta$ , as well as a number of other cytokines (Tsuzuki, 1996). Downstream, aldosterone, in addition to its hypertensive effects mediated through the mineralocorticoid receptor, also up-regulates the expression of TGF- $\beta$  (Juknevičius et al., 2000). These studies have supported a widespread use of RAAS inhibitors (ACE-inhibitors, AT-1 inhibitors and aldosterone receptor inhibitors) to prevent renal disease progression. However, there is concern with the often-seen deleterious effects on renal function of the

stenotic kidney caused by these anti-hypertensive agents. With already compromised blood flow, concern about increased damage to the ischemic kidney must be weighed with the benefits to the contralateral kidney (Jackson et al., 1986). With substantial arterial obstruction, simply reducing perfusion pressure can reduce post-stenotic blood flow beyond that required for metabolic demands in the kidney. Early experimental studies in rats emphasized the potential for irreversible damage to the clipped kidney in animals treated with ACE inhibitors, resulting in “medical nephrectomy” (Jackson, 1990). However, it is important to note that this adverse reaction can develop with any forms of antihypertensive therapy (Textor et al., 1983). The risk factors for this adverse event include older age groups, pre-existing renal dysfunction, and episodes of acute illness leading to volume depletion (such as diarrhea or reduced intake during diuretic administration) (Speirs, et al., 1988).

With the increasing evidence of the involvement of TGF- $\beta$  in RAS induced damage, the role of the RAAS in RAS, especially with respect to its induction of an inflammatory response, is being re-thought. There should be careful consideration and evaluation of the role of the immunologic and cytokine-associated effects of RAAS in the pathological process and initiation of RAS induced kidney damage. Such research may shed new light on whether the benefits of RAAS inhibition outweigh the costs in patients with RAS.

### 1.3 TGF- $\beta$ and renovascular disease

Mechanisms underlying the differential response of the stenotic and contralateral kidney during the development and progression of RVH have not been adequately defined, despite numerous studies (Goldblatt et al., 1934; Martinez-Maldonado, 1991; Carretero, 1991). TGF- $\beta$  is involved in a number of processes relevant to the development of RVH, including cell cycle regulation leading to hypertrophy and/or apoptosis, MAPK activation, inflammation, and extracellular matrix synthesis (Cheng & Grande, 2002).

It is well recognized that TGF- $\beta$  plays a central role in fibrotic diseases (Cheng & Grande, 2002; Border et al., 1990; Border & Noble, 1994, 1997; Border & Ruoslahti, 1992). All aspects of fibrogenesis have been shown to be regulated by TGF- $\beta$ , including the initial inflammatory phase in which infiltrating inflammatory cells and macrophages set the stage for the subsequent fibrotic phase in which activated fibroblasts and myofibroblasts contribute to the pathogenic accumulation of matrix (Cheng et al., 2005). In the past few years, receptors and signal transduction pathways mediating the effects of TGF- $\beta$  on cells have been identified, enabling the identification of specific pathways involved in pathogenic events dependent on this cytokine. TGF- $\beta$  signals through a set of transmembrane receptor serine/threonine kinases unique to the larger superfamily of TGF- $\beta$ -related proteins. The active heteromeric receptor complex is formed by binding of ligand to a type II receptor, recruitment and activation of the type I receptor kinase, and phosphorylation of intracellular mediating target proteins (Massague, 1992, 1998; Attisano et al., 1994). Increased TGF- $\beta$  receptor expression is observed in experimental glomerulonephritis (Shankland et al., 1996; Tamaki et al., 1994). In experimental renal disease associated with epithelial to mesenchymal transformation, TGF- $\beta$  type 1 receptor expression is increased in tubular epithelial cells (Yang & Liu, 2002). Downstream mediators are the Smad family of proteins (Piek et al., 1999). Smad2 and 3 are phosphorylated directly by the type I receptor kinase, after which they partner with Smad4 and translocate to the nucleus where they act as transcriptional regulators of target genes, including those essential for apoptosis,

inflammation, differentiation, and growth inhibition (Massague & Wotton, 2000; Derynck et al., 1998; Attisano et al., 2001). TGF- $\beta$  plays a critical role in chronic inflammatory changes of the interstitium and extracellular matrix accumulation during fibrogenesis (Cheng & Grande, 2002; Grande et al., 1997, 2002). TGF- $\beta$  initiates the transition of renal tubular epithelial cells to myofibroblasts, the cellular source for extracellular matrix deposition, leading to irreversible renal failure (Yang & Liu, 2001; Iwano et al., 2002; Li et al., 2002).

A predominant role of TGF- $\beta$ 1 in regulation of extracellular matrix deposition is highlighted in our published studies employing renal tubular epithelial cells derived from animals bearing a homozygous deletion of the TGF- $\beta$ 1 gene (Grande et al., 2002). Although the most direct means to test the hypothesis that TGF- $\beta$ 1 plays a central role in the development of RVH would be to perform these studies in mice bearing homozygous deletion of the TGF- $\beta$ 1 gene, the phenotype of these animals precludes such studies. TGF- $\beta$ 1 KO animals have an extremely high rate of embryonic lethality, and the few surviving mice develop a systemic inflammatory syndrome, leading to their death within 2-4 weeks of age (Letterio et al., 1994; Martin et al., 1995; Kulkarni & Karlsson, 1993; Boivin et al., 1995). For this reason, more recent studies have employed mice with genetic manipulation of the Smad proteins to define potential mechanisms by which the TGF- $\beta$  signaling pathway is involved in chronic tissue injury. Smad3 KO mice show accelerated healing of wounds, in association with decreased local inflammation (Ashcroft et al., 1999). Smad3-null mice have been used in several chronic injury models, including ureteric obstruction (Sato et al., 2003). In WT mice, unilateral ureteric obstruction (UUO) produces extensive interstitial fibrosis and tubular atrophy, with TGF- $\beta$ 1-driven epithelial to mesenchymal transformation of tubular epithelial cells, as evidenced by reduction in E-cadherin staining and de novo induction of  $\alpha$ -smooth muscle actin ( $\alpha$ -SMA) staining. This is associated with extensive influx of monocytes. In Smad3 KO animals subjected to UUO, there was a marked reduction in interstitial fibrosis, and epithelial to mesenchymal transformation, indicating that the Smad pathway is necessary for epithelial to mesenchymal transformation by TGF- $\beta$  (Itoh et al., 2003; Yu et al., 2002).

#### 1.4 MAPK pathways and renovascular disease

It is well recognized that cellular adaptive responses to environmental stimuli, including hypertrophy, hyperplasia, and atrophy associated with increased apoptotic activity, are transduced through the MAPK pathway(s) (Kyriakis 2000; Kyriakis and Avruch 2001). Cardiac hypertrophy in A-II dependent hypertension is associated with activation of p38, whereas ERK and JNK are preferentially stimulated in an A-II independent model of RVH (Pellieux et al. 2000). The development of hypertension is associated with persistent ERK activation in the aorta of Dahl salt-sensitive rats and stroke-prone spontaneously hypertensive rats (Kim et al. 1997; Hamaguchi et al. 2000). In human diabetic nephropathy, there is increased immunohistochemical staining for p-ERK in glomeruli which correlates with the severity of glomerular lesions and increased p-p38 staining which correlates with severity of tubulointerstitial lesions and number of CD68-positive macrophages (Adhikary et al. 2004; Toyoda et al. 2004; Sakai et al. 2005). Hypertension accelerates the development of diabetic nephropathy in a rat model of type 2 diabetes through induction of ERK and p38, as well as TGF- $\beta$  (Imai et al. 2003). Similarly, the p38 and JNK pathways are activated in the early stages of experimental proliferative glomerulonephritis, whereas the ERK pathway is persistently activated (Bokemeyer et al. 1998). Both p38 and JNK are activated in

experimental anti-glomerular basement membrane antibody mediated glomerulonephritis (Stambe et al. 2003). In a variety of other human renal diseases, p-ERK expression is observed in regions of tubulointerstitial damage, within  $\alpha$ -SMA positive myofibroblasts (Masaki et al. 2004). In cultured cells, ERK is involved in epithelial to mesenchymal transformation (Li et al. 2004; Xie et al. 2004; Yang et al. 2004). We have previously identified ERK, p38, and JNK as essential intermediates for MC mitogenesis, and ERK and p38 as essential intermediates for TGF- $\beta$  stimulated collagen IV mRNA expression and MCP-1 production (Cheng et al. 2002; Cheng et al. 2004). We have also shown that ERK is significantly upregulated in a rat model of salt sensitive hypertension (Diaz et al., 2008). Others have shown that p38 activation is necessary for TGF- $\beta$  stimulation of fibronectin production (Suzuki et al. 2004).

The MAPK pathways are involved in regulation of cell cycle arrest and apoptosis, which is of direct relevance to the renal atrophy which occurs in the stenotic kidney of the 2K1C RAS model. Activation of ERK is necessary for TGF- $\beta$ -mediated induction of p21 and cell cycle arrest (Hu et al. 1999). High glucose promotes hypertrophy of MC through ERK mediated phosphorylation of p27 (Wolf et al. 2003). Activation of p38 or JNK is frequently associated with cell cycle arrest or apoptosis (Cardone et al. 1997; Frasch et al. 1998). Induction of apoptosis in MC requires sustained activation of JNK (Guo et al. 1998). Apoptosis and other cellular responses may be directed by a balance between ERK and JNK activation (Xia et al. 1995).

Based on these considerations, there has been intense interest in developing low molecular weight pathway specific MAPK inhibitors as therapeutic agents to treat cancer and fibroproliferative inflammatory conditions (Duncia et al. 1998; Sebolt-Leopold et al. 1999; Clemons et al. 2002; Duan et al. 2004; Sebolt-Leopold and Herrera 2004; Jo et al. 2005; McDaid et al. 2005). These agents have been employed in experimental renovascular disease, with mixed results. The ERK inhibitor U0126 was effective in reducing acute renal injury in an experimental mesangial proliferative glomerulonephritis model (Bokemeyer et al. 2002). In human renal diseases associated with injury to podocytes, p38 is induced. The p38 inhibitor FR167653 prevents renal dysfunction and glomerulosclerosis in chronic adriamycin nephropathy (Koshikawa et al. 2005) and in experimental crescentic glomerulonephritis (Wada et al. 2001). Similarly, the p38 inhibitor NPC31145 reduced acute inflammatory injury in an experimental anti-glomerular basement membrane glomerulonephritis model (Stambe et al. 2003). On the other hand, the p38 inhibitor FR167653 increased proteinuria in a passive Heymann nephritis model of podocyte injury (Aoudjit et al. 2003), suggesting that activation of p38 protects podocytes from complement mediated injury. Furthermore, the p38 inhibitor NPC31169 exacerbated renal damage in a remnant kidney model due to in vivo induction of ERK (Ohashi et al. 2004).

### 1.5 The role of inflammation in renovascular disease

RVH initiates activation of the renin-angiotensin system and structural remodeling, evidenced by fibrosis and vascular deterioration in the affected kidney. Although the renin-angiotensin system tends to resolve once a stable blood pressure (BP) is reached, it has been suggested that transient elevation of plasma A-II could precipitate macrophage infiltration, thereby initiating an inflammatory response within the kidney (Ozawa et al., 2007). This inflammatory cascade may well underlie the degenerative processes within the kidney as its renal artery begins to narrow.



We performed PCR array studies of renal homogenates obtained from mice subjected to RAS or sham surgery. The results of our PCR Array studies (Table 1) implicate monocyte chemoattractant protein-1 (MCP-1) as a key chemokine in this inflammatory response. In addition to infiltrating inflammatory cells, tubular epithelial cells of the stenotic kidney of mice exposed to RAS express high level of MCP-1 (figure 3). Our findings are in accord with those of other investigators who have studied renovascular hypertension. High salt diet in DSS rats caused expression of NADPH oxidase and MCP-1 in the dilated renal tubules and resulting in interstitial inflammation and migration of mononuclear cells (Shigemoto et al., 2007). Increased MCP-1 levels also seem to stimulate TGF- $\beta$  formation in glomerular cells despite the absence of infiltrating inflammatory cells (Wolf et al., 2002). Studies in the swine model of renovascular hypertension using bindarit, a selective MCP-1 blocker, show that inhibition of MCP-1 confers renal protective effects by blunting renal inflammation and reducing the level of collagen deposition, thereby preserving the kidney in chronic RAS (Zoja et al., 1998; Zhu et al., 2009). It was further indicated that MCP-1 contributes to functional and structural impairment in the RAS kidney, specifically in the tubulo-interstitial compartment.

Gene function	Gene symbol	Gene name	Fold change
Inflammation	Ccl2	MCP-1 (monocyte chemoattractant protein 2)	+43
	Ccl3	MIP-1 $\alpha$ (macrophage inflammatory protein 1 $\alpha$ )	+22
	Ccl4	MIP-1 $\beta$ (macrophage inflammatory protein 1 $\beta$ )	+8
	Ccl5	RANTES (regulated upon activation, normal T-cell expressed and secreted cytokine)	
	Ccl7	MCP-3 (monocyte chemoattractant protein 3)	+153
	Ccl8	MCP-2 (monocyte chemoattractant protein 2)	+149
	Ccl12	MCP-5 (monocyte chemoattractant protein 5)	+56
	Ccl20	MIP-3 $\alpha$ (macrophage inflammatory protein 3 $\alpha$ )	+105
	Ccl22	MDC (macrophage derived chemokine)	+41
	Ccr2	Chemokine (C-C motif) receptor 2	+30
	Ccr3	Chemokine (C-C motif) receptor 3	+35
	Ccr4	Chemokine (C-C motif) receptor 4	+6
	Cxcl2	MIP-2 $\alpha$ (macrophage inflammatory protein 2 $\alpha$ )	+208
	Cxcl3	MIP-2 $\beta$ (macrophage inflammatory protein 2 $\beta$ )	+7
	Cxcl5	AMCF-II (alveolar macrophage chemotactic factor)	+653
	Cxcl9	Mig (monokine induced by $\gamma$ -interferon)	+5
	IL1 $\alpha$	Interleukin-1 $\alpha$	+18
	IL1 $\beta$	Interleukin-1 $\beta$	+11

Table 1. PCR array results of proinflammatory cytokine expression in stenotic kidneys of RAS mouse

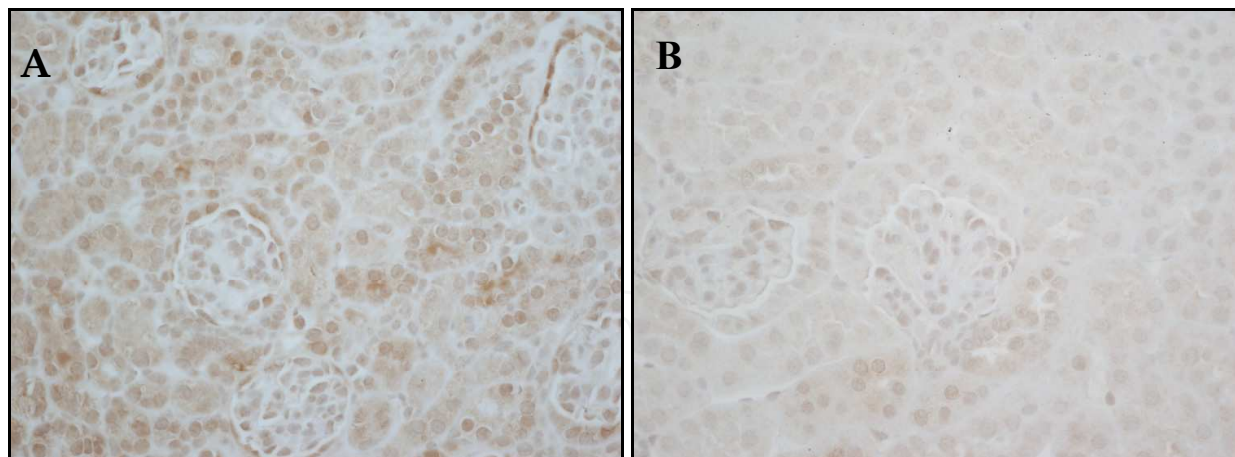


Fig. 3. MCP-1 staining in the (A) contralateral kidney and (B) stenotic kidney of C57BLKS mouse 4 weeks after placement of renal artery clip.

At a cellular level, it is apparent that the renal artery stenosis did elicit an inflammatory cascade in the kidney as evidenced by macrophage infiltration, the rise in MCP-1 and its receptor chemokine (C-C motif) receptor 2 (CCR2), NF $\kappa$ B, protein kinase C (PKC) and TGF- $\beta$ . Remarkably, we also saw transient increase in MCP-1 and TGF- $\beta$  in the contralateral kidney which indicates some inflammatory process taking place despite lack of inflammatory cells and/or tissue damage. It is apparent that blockade of the MCP-1 receptor does offer renal protection and prevents the progressive fibrosis development in renovascular hypertension. Elucidating the underlying mechanisms of this protection will allow us to develop preventive measures and novel therapeutic interventions that could possibly be applied to other renal diseases.

### 1.6 Therapeutic implication

Hypertension is one of the most common reasons for a visit to a physician. There are several key issues that need to be addressed during evaluation of a patient with hypertension: accurate blood pressure reading, determination of target organ damage due to hypertension, screening for other cardiovascular risk factor, stratification of cardiovascular disease, and assessment for the cause of hypertension (primary vs. secondary hypertension). Thorough assessment of the cause of hypertension is essential for determining the correct treatment approach, especially in children where atherosclerosis is not common. For children with hypertension, it is necessary to consider genetic diseases (i.e. coarctation of the aorta, primary aldosteronism) and auto-immune diseases (i.e. post-infectious-glomerulonephritis). When initiating treatment, it is important to maintain low systolic pressure as systolic pressure is a stronger predictor of cardiovascular event (Mancia et al. 2009; Cherubini et al. 2010). Maintenance of blood pressure goal should ideally be achieved within 6 to 9 months of therapeutic initiation.

## 2. Conclusion

Optimal management of renovascular hypertension requires an understanding of the disease process and remains an important challenge for clinicians caring for patients with hypertension. Although the pathophysiology and the consequence to human health caused

by RVH are well understood, the exact mechanism by which the stenosis of the renal artery induces the damage is not. Revascularization studies have demonstrated highly variable results, with significant improvement in a small subset of patients, but an overall lack of justification of the risks, when applied to large groups of patients (Textor et al., 2009). While parsing out why some patients benefit while others do not will be an important task in the years to come, the more significant benefit will be from determining the reasons for the continued renal damage in the majority of revascularized patients. Developing novel therapies to address these yet-unknown pathological processes will yield benefit for all RAS patients. Recent studies implicate the non-hemodynamic effects of the renin-angiotensin-aldosterone system and the inflammatory chemokines as possible initiating signals for the atrophic, inflammatory and fibrotic changes seen. Elucidating, more thoroughly, the role these pathways play in renal damage due to RAS could identify new targets for therapeutic intervention and the first biomarkers to aid in diagnosis, limiting the need for costly and damaging imaging studies. Many questions remain to understand how these pathways are initiated, how they interact and how they ultimately lead to renal damage. What cells first sense the stenosis, and how do they sense it? Which of the pathways contribute to damage and which are necessary to preserve kidney function? The answer to these and other such questions hold the possibility to further the science, diagnostics and treatment of renovascular hypertension, and to improve the lives of the millions it affects.

### 3. References

- Adhikary L, Chow F, Nikolic-Paterson DJ, Stambe C, Dowling J, Atkins RC, et al. (2004). Abnormal p38 mitogen-activated protein kinase signalling in human and experimental diabetic nephropathy. *Diabetologia*, 47(7):1210-22.
- Aoudjit L, Stanciu M, Li H, Lemay S, Takano T. (2003). p38 mitogen-activated protein kinase protects glomerular epithelial cells from complement-mediated cell injury. *Am J Physiol Renal Physiol*, 285(4):F765-74.
- Ashcroft G, Yang X, Glick A, Weinstein M, Letterio J, Mizel D, et al. (1999). Mice lacking Smad3 show accelerated wound healing and an impaired local inflammatory response. *Nature Cell Biology*, 1:260-266.
- Attisano L, Tuen Lee-Hoeflich S. (2001). The Smads. *Genome Biology*, 2(8).
- Attisano L, Wrana JL, Lopez-Casillas F, Massague J. (1994). TGF- $\beta$  receptors and actions. *Biochimica et Biophysica Acta*, 1222:71-80.
- B Jackson, BP McGrath, PG Matthews, C Wong and CI Johnston. (1986). Differential renal function during angiotensin converting enzyme inhibition in renovascular hypertension. *Hypertension*. 8:650-654
- Boivin GP, O'Toole BA, Orsmy IE, Diebold RJ, Eis MJ, Doetschman T, et al. (1995). Onset and progression of pathological lesions in transforming growth factor- $\beta$ 1-deficient mice. *Am J Pathol*, 146(1):276-88.
- Bokemeyer D, Guglielmi KE, McGinty A, Sorokin A, Lianos EA, Dunn MJ. (1998). Different activation of mitogen-activated protein kinases in experimental proliferative glomerulonephritis. *Kidney Int Suppl*, 67(5):S189-91.
- Bokemeyer D, Panek D, Kramer HJ, Lindemann M, Kitahara M, Boor P, et al. (2002). In vivo identification of the mitogen-activated protein kinase cascade as a central pathogenic pathway in experimental mesangioproliferative glomerulonephritis. *J Am Soc Nephrol*;13(6):1473-80.

- Border WA, Noble NA. (1997). TGF- $\beta$  in kidney fibrosis: A target for gene therapy. *Kidney Int*;51(5):1388-1396.
- Border WA, Noble NA. (1994). Transforming growth factor  $\beta$  in tissue fibrosis. *N Engl J Med*, 331:1286-1292.
- Border WA, Okuda S, Languino LR, Sporn MB, Ruoslahti E. (1990). Suppression of experimental glomerulonephritis by antiserum against transforming growth factor  $\beta$ -1. *Nature*;346:371-374.
- Border WA, Ruoslahti E. (1992). Transforming growth factor  $\beta$  in disease: The dark side of tissue repair. *J Clin Invest*, ;90:1-7.
- Brewster UC, Perazella MA. (2004). The reninangiotensin-aldosterone system and the kidney: effects on kidney disease. *Am J Med*, 116:263-72
- Cardone MH, Salvesen GS, Widmann C, Johnson G, Frisch SM. (1997). The regulation of anoikis: MEKK-1 activation requires cleavage by caspases. *Cell*, 90(2):315-23.
- Carretero OA, Scicli AG. (1991). Local hormonal factors (intracrine, autocrine, and paracrine) in hypertension. *Hypertension*, 18(3 Suppl):I58-69.
- Chabova V, Schirger A, Stanson AW, McKusick MA, Textor SC. (2000). Outcomes of atherosclerotic renal artery stenosis managed without revascularization. *Mayo Clin Proc*, 75(5):437-44.
- Cheng J., Zhou, W., Warner, GM., Knudsen, BE., Garovic, VD., Gray, CE., Lerman, LO., Platt, JL., Romero, JC., Textor, SC., Nath, KA. & Grande, JP. (2009). Temporal analysis of signaling pathways activated in a murine model of two-kidney, one-clip hypertension. *Am J Physiol Renal Physiol*. 297:(4) F1055-F1068
- Cheng J, Diaz Encarnacion MM, Warner GM, Gray CE, Nath KA, Grande JP. (2005). TGF-beta1 stimulates monocyte chemoattractant protein-1 expression in mesangial cells through a phosphodiesterase isoenzyme 4-dependent process. *Am J Physiol Cell Physiol*;289(4):C959-70.
- Cheng J, Grande JP. (2002). Transforming growth factor-beta signal transduction and progressive renal disease. *Exp Biol Med*;227:943-956.
- Cheng J, Gray C, Warner G, Grande J. (2002). Regulation of monocyte chemoattractant protein-1 (MCP-1) by MAPK inhibitors in rat mesangial cells. *J Am Soc Nephrol*, 13:136A.
- Cheng J, Thompson MA, Walker HJ, Gray CE, Diaz Encarnacion MM, Warner GM, et al. (2004). Differential Regulation of Mesangial Cell Mitogenesis by cAMP Phosphodiesterase Isozymes 3 and 4. *Am J Physiol Renal Physiol*, 287(5):F940-53.
- Cherubini, A., D. T. Lowenthal, et al. (2010). "Hypertension and cognitive function in the elderly." *Disease-a-month* : DM 56(3): 106-147.
- Clemons AP, Holstein DM, Galli A, Saunders C. (2002). Cerulein-induced acute pancreatitis in the rat is significantly ameliorated by treatment with MEK1/2 inhibitors U0126 and PD98059. *Pancreas*, 25(3):251-9.
- Derynck R, Zhang Y, Feng X. (1998). Smads: transcriptional activators of TGF- $\beta$  responses. *Cell*, 95:737-740.
- Diaz Encarnacion MM, Warner GM, Gray CE, Cheng J, Keryakos HK, Nath KA, and Grande JP (2008) Signaling pathways modulated by fish oil in salt-sensitive hypertension. *Am J Physiol Renal Physiol* 294:F1323-F1335



- Duan W, Chan JH, Wong CH, Leung BP, Wong WS. (2004). Anti-inflammatory effects of mitogen-activated protein kinase kinase inhibitor U0126 in an asthma mouse model. *J Immunol*, 172(11):7053-9.
- Duncia JV, Santella JB, 3rd, Higley CA, Pitts WJ, Wityak J, Frietze WE, et al. (1998). MEK inhibitors: the chemistry and biological activity of U0126, its analogs, and cyclization products. *Bioorg Med Chem Lett*, 8(20):2839-44.
- Dzau VJ, Re R. (1994). Tissue angiotensin system in cardiovascular medicine: a paradigm shift? *Circulation*. 89:493-498.
- Eng E, Veniant M, Floege J, Fingerle J, Alpers CE, Menard J, et al. (1994). Renal proliferative and phenotypic changes in rats with two-kidney, one-clip Goldblatt hypertension. *Am J Hypertens*;7(2):177-85.
- Foley R, Wang C, AJ C. (2005). Cardiovascular risk factor profiles and kidney function stage in the US general population: The NHANES III Study. *Mayo Clin Proc*, 80(10):1270-1277.
- Foley RN, Murray AM, Li S, Herzog CA, McBean AM, Eggers PW, et al. (2005). Chronic kidney disease and the risk for cardiovascular disease, renal replacement, and death in the United States Medicare population, 1998 to 1999. *J Am Soc Nephrol*, 16(2):489-95.
- Frasch SC, Nick JA, Fadok VA, Bratton DL, Worthen GS, Henson PM. (1998). p38 mitogen-activated protein kinase-dependent and -independent intracellular signal transduction pathways leading to apoptosis in human neutrophils. *J Biol Chem*, 273(14):8389-97.
- Garovic V, Textor SC. (2005). Renovascular hypertension: current concepts. *Semin Nephrol*, 25:261-271.
- Garty H. (1992). Regulation of sodium permeability by aldosterone. *Semin Nephrol*;12:24-29
- Gauer S, Hartner A, Hauser IA, Fierlbeck W, Eberhardt W, Geiger H. (2003). Differential regulation of osteopontin expression in the clipped and nonclipped kidney of two-kidney, one-clip hypertensive rats. *Am J Hypertens*;16(3):214-22.
- Goldblatt H, Lynch J, Hanzal R, Summerville W. (1934). Studies on experimental hypertension; I: The production of persistent elevation of systolic blood pressure by means of renal ischemia. *J Exp Med*, 59:347-79.
- Grande J, Warner G, Walker H, Yusufi A, Gray C, Kopp J, et al. (2002). TGF- $\beta$ 1 is an autocrine mediator of renal tubular epithelial cell growth and collagen IV production. *Exp Biol Med*, 227:171-181.
- Grande JP, Melder DC, Zinsmeister AR. (1997). Modulation of collagen gene expression by cytokines: Stimulatory effect of transforming growth factor- $\beta$ 1, with divergent effects of epidermal growth factor and tumor necrosis factor- $\alpha$  on collagen type I and collagen type IV. *J Lab Clin Med*, 130:476-486.
- Guo YL, Baysal K, Kang B, Yang LJ, Williamson JR. (1998). Correlation between sustained c-Jun N-terminal protein kinase activation and apoptosis induced by tumor necrosis factor- $\alpha$  in rat mesangial cells. *J Biol Chem*, 273(7):4027-34.
- Hamaguchi A, Kim S, Izumi Y, Iwao H. (2000). Chronic activation of glomerular mitogen-activated protein kinases in Dahl salt-sensitive rats. *J Am Soc Nephrol*, 11(1):39-46.

- Hansen KJ, Edwards MS, Craven TE, Cherr GS, Jackson SA, Appel RG, et al. (2002). Prevalence of renovascular disease in the elderly: a population-based study. *J Vasc Surg*, 36(3):443-51.
- Hollenberg NK. (1999). Pharmacologic interruption of the renin-angiotensin system and the kidney: differential responses to angiotensin converting enzyme and renin inhibition. *J Am Soc Nephrol*, 10(suppl):S239-S242
- Hu PP, Shen X, Huang D, Liu Y, Counter C, Wang XF. (1999). The MEK pathway is required for stimulation of p21(WAF1/CIP1) by transforming growth factor-beta. *J Biol Chem*, 274(50):35381-7.
- Iglesias JL, Hamburger RJ, Feldman L, Kaufman JS. (2000). The natural history of incidental renal artery stenosis in patients with aortoiliac vascular disease. *Am J Med*, 109(8):642-7.
- Imai G, Satoh T, Kumai T, Murao M, Tsuchida H, Shima Y, et al. (2003). Hypertension accelerates diabetic nephropathy in Wistar fatty rats, a model of type 2 diabetes mellitus, via mitogen-activated protein kinase cascades and transforming growth factor-beta1. *Hypertens Res*, 26(4):339-47.
- Itoh S, Thorikay M, Kowanetz M, Moustakas A, Itoh F, Heldin CH, et al. (2003). Elucidation of Smad requirement in transforming growth factor-beta type I receptor-induced responses. *J Biol Chem*, 278(6):3751-61.
- Iwano M, Plieth D, Danoff TM, Xue C, Okada H, Neilson EG. (2002). Evidence that fibroblasts derive from epithelium during tissue fibrosis. *J Clin Invest*, 110(3):341-50.
- Jackson B, Franze L, Sumithran E, Johnston CI. (1990). Pharmacologic nephrectomy with chronic angiotensin converting enzyme inhibitor treatment in renovascular hypertension in the rat. *J Lab Clin Med*, 115:21-27
- Jo SK, Cho WY, Sung SA, Kim HK, Won NH. (2005). MEK inhibitor, U0126, attenuates cisplatin-induced renal injury by decreasing inflammation and apoptosis. *Kidney Int*;67(2):458-66.
- Johnston CI. (1992). Renin-angiotensin system: a dual tissue and hormonal system for cardiovascular control. *J Hypertens Suppl*, 10(suppl):S13-S26
- Juknevičius I, Segal Y, Kren S, et al. (2000). Aldosterone causes TGF- $\beta$  expression. *J Am Soc Nephrol*;11:59-66
- Keddis, MT., Garovic, VD., Bailey, KR., Wood, CM., Raissian, Y. & Grande, JP. (2010). Ischaemic nephropathy secondary to atherosclerotic renal artery stenosis: clinical and histopathological correlates. *Nephrol. Dial. Transplant*. 25: 3615-3622
- Kim S, Murakami T, Izumi Y, Yano M, Miura K, Yamanaka S, et al. (1997). Extracellular signal-regulated kinase and c-Jun NH2-terminal kinase activities are continuously and differentially increased in aorta of hypertensive rats. *Biochem Biophys Res Commun*, 236(1):199-204.
- Kobayashi S, Ishida A, Moriya H, Mori N, Fukuda T, Takamura T. (1999). Angiotensin II receptor blockade limits kidney injury in two-kidney, one-clip Goldblatt hypertensive rats with special reference to phenotypic changes. *J Lab Clin Med*;133(2):134-43.
- Koshikawa M, Mukoyama M, Mori K, Suganami T, Sawai K, Yoshioka T, et al. (2005). Role of p38 Mitogen-Activated Protein Kinase Activation in Podocyte Injury and

- Proteinuria in Experimental Nephrotic Syndrome. *J Am Soc Nephrol*;16(9):2690-701.
- Kulkarni AB, Huh C-G, Becker D, Geiser A, Lyght M, Flanders KC, et al. (1993). Transforming growth factor  $\alpha$ -1 null mutation in mice causes excessive inflammatory response and early death. *Proceedings of the National Academy of Sciences*;90:770-774.
- Kulkarni AB, Karlsson S. (1993). Transforming growth factor  $\beta$ -1 knockout mice. A mutation in one cytokine gene causes a dramatic inflammatory disease. *American Journal of Pathology*;143:3-9.
- Kyriakis JM, Avruch J. (2001). Mammalian mitogen-activated protein kinase signal transduction pathways activated by stress and inflammation. *Physiol Rev*;81(2):807-69.
- Kyriakis JM. (2000). MAP kinases and the regulation of nuclear receptors. *Sci STKE*;2000(48):E1.
- Laragh JH, Angers M, Kelly WG, Lieberman S. (1960). Hypotensive agents and pressor substances: the effect of epinephrine, norepinephrine, A-II, and others on the secretory rate of aldosterone in man. *JAMA*. 1960;174:234-240
- Letterio JJ, Geiser AG, Kulkarni AB, Roche NS, Sporn MB, Roberts AB. (1994). Maternal rescue of transforming growth factor- $\beta$ 1 null mice. *Science* 1994;264:1936-1938.
- Li J, Zhu H, Huang X, Lai K, RJ J, Lan H. (2002). Smad7 inhibits fibrotic effect of TGF- $\beta$  on renal tubular epithelial cells by blocking Smad2 activation. *J Am Soc Nephrol*;13:1464-1472.
- Li JH, Wang W, Huang XR, Oldfield M, Schmidt AM, Cooper ME, et al. (2004). Advanced glycation end products induce tubular epithelial-myofibroblast transition through the RAGE-ERK1/2 MAP kinase signaling pathway. *Am J Pathol*;164(4):1389-97.
- Liu FY, Cogan MG. (1989). A-II stimulates early proximal bicarbonate absorption in the rat by decreasing cyclic adenosine monophosphate. *J Clin Invest*;84:83-91.
- Luft FC. (2002). Proinflammatory effects of A-II and endothelin: targets for progression of cardiovascular and renal disease. *Curr Opin Nephrol Hypertens*;11:59-66.
- Mai M, Geiger H, Hilgers KF, Veelken R, Mann JF, Dammrich J, et al. (1993). Early interstitial changes in hypertension-induced renal injury. *Hypertension*;22(5):754-65.
- Mancia, G., S. Laurent, et al. (2009). "Reappraisal of European guidelines on hypertension management: a European Society of Hypertension Task Force document." *Journal of hypertension* 27(11): 2121-2158.
- Mann JF, Gerstein HC, Pogue J, Bosch J, Yusuf S. Renal insufficiency as a predictor of cardiovascular outcomes and the impact of ramipril: the HOPE randomized trial. *Ann Intern Med* 2001;134(8):629-36.
- Martin JS, Dickson MC, Cousins FM, Kulkarni AB, Karlsson S, Akhurst RJ. (1995). Analysis of homozygous TGF- $\beta$ 1 null mouse embryos demonstrates defects in yolk sac vasculogenesis and hematopoiesis. *Annals of the New York Academy of Sciences* 1995;752:300-308.
- Martinez-Maldonado M. (1991). Pathophysiology of renovascular hypertension. *Hypertension* 1991;17(5):707-19.

- Masaki T, Stambe C, Hill PA, Dowling J, Atkins RC, Nikolic-Paterson DJ. (2004). Activation of the extracellular-signal regulated protein kinase pathway in human glomerulopathies. *J Am Soc Nephrol* 2004;15(7):1835-43.
- Massague J, Wotton D. (2000). Transcriptional control by the TGF-beta/Smad signaling system. *Embo J*;19(8):1745-54.
- Massague J. (1992). Receptors for the TGF-beta family. *Cell* 1992;69:1067-1070.
- Massague J. (1998). TGF- $\beta$  signal transduction. *Annu Rev Biochem*;67:753-791.
- McDaid HM, Lopez-Barcons L, Grossman A, Lia M, Keller S, Perez-Soler R, et al. (2005). Enhancement of the therapeutic efficacy of taxol by the mitogen-activated protein kinase kinase inhibitor CI-1040 in nude mice bearing human heterotransplants. *Cancer Res*;65(7):2854-60.
- Ohashi R, Nakagawa T, Watanabe S, Kanellis J, Almirez RG, Schreiner GF, et al. (2004). Inhibition of p38 mitogen-activated protein kinase augments progression of remnant kidney model by activating the ERK pathway. *Am J Pathol*;164(2):477-85.
- Okamura T, Miyazaki M, Inagami T, Toda N. (1986). Vascular renin-angiotensin system in two-kidney, one clip hypertensive rats. *Hypertension*;8(7):560-5.
- Ozawa Y, Kobori H, Suzaki Y, Navar LG. (2007). Sustained renal interstitial macrophage infiltration following chronic angiotensin II infusions. *Am J Physiol Renal Physiol* 2007; 292:F330-F339
- Pellieux C, Sauthier T, Aubert JF, Brunner HR, Pedrazzini T. (2000). Angiotensin II-induced cardiac hypertrophy is associated with different mitogen-activated protein kinase activation in normotensive and hypertensive mice. *J Hypertens*;18(9):1307-17.
- Piek E, Heldin C-H, Ten Dijke P. Specificity, diversity, and regulation in TGF- $\beta$  superfamily signaling. *FASEB J* 1999;13:2105-2124.
- Pipinos, II, Nypaver TJ, Moshin SK, Caretero OA, Beierwaltes WH. Response to angiotensin inhibition in rats with sustained renovascular hypertension correlates with response to removing renal artery stenosis. *J Vasc Surg* 1998;28(1):167-77.
- Raghow R. The role of extracellular matrix in postinflammatory wound healing and fibrosis. *Federation of American Societies for Experimental Biology* 1994;8:823-831.
- Richter CM, Godes M, Wagner C, Maser-Gluth C, Herzfeld S, Dorn M, et al. Chronic cyclooxygenase-2 inhibition does not alter blood pressure and kidney function in renovascular hypertensive rats. *J Hypertens* 2004;22(1):191-8.
- Rihal CS, Textor SC, Breen JF, McKusick MA, Grill DE, Hallett JW, et al. Incidental renal artery stenosis among a prospective cohort of hypertensive patients undergoing coronary angiography. *Mayo Clin Proc* 2002;77(4):309-16.
- Safian RD, Textor SC. Renal-artery stenosis. *N Engl J Med* 2001;344(6):431-42.
- Sakai N, Wada T, Furuichi K, Iwata Y, Yoshimoto K, Kitagawa K, et al. Involvement of extracellular signal-regulated kinase and p38 in human diabetic nephropathy. *Am J Kidney Dis* 2005;45(1):54-65.
- Sato M, Muragaki Y, Saika S, Roberts AB, Ooshima A. Targeted disruption of TGF-beta1/Smad3 signaling protects against renal tubulointerstitial fibrosis induced by unilateral ureteral obstruction. *J Clin Invest* 2003;112(10):1486-94.
- Schoolwerth AC, Sica DA, Ballermann BJ, Wilcox CS. Renal considerations in angiotensin converting enzyme inhibitor therapy: a statement for healthcare professionals from the Council on the Kidney in Cardiovascular Disease and the Council for High

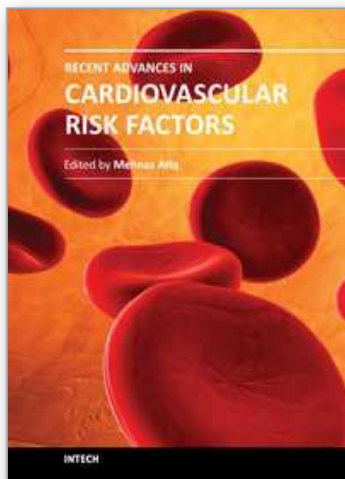


- Blood Pressure Research of the American Heart Association. *Circulation* 2001;104(16):1985-91.
- Sebekova K, Dammrich J, Fierlbeck W, Krivosikova Z, Paczek L, Heidland A. Effect of chronic therapy with proteolytic enzymes on hypertension-induced renal injury in the rat model of Goldblatt hypertension. *Am J Nephrol* 1998;18(6):570-6.
- Sebolt-Leopold JS, Dudley DT, Herrera R, Van Becelaere K, Wiland A, Gowan RC, et al. Blockade of the MAP kinase pathway suppresses growth of colon tumors in vivo. *Nat Med* 1999;5(7):810-6.
- Sebolt-Leopold JS, Herrera R. Targeting the mitogen-activated protein kinase cascade to treat cancer. *Nat Rev Cancer* 2004;4(12):937-47.
- Shankland SJ, Pippin J, Pichler RH, Gordon KL, Friedman S, Gold LI, et al. Differential expression of transforming growth factor- $\alpha$  isoforms and receptors in experimental membranous nephropathy. *Kidney Int* 1996;50(1):116-124.
- Shigemoto Fujii, Ling Zhang and Hiroaki Kosaka. Albuminuria, Expression of Nicotinamide Adenine Dinucleotide Phosphate Oxidase and Monocyte Chemoattractant Protein-1 in the Renal Tubules of Hypertensive Dahl Salt-Sensitive Rats. *Hypertension Research* 30, 991-998 (October 2007)
- Speirs CJ, Dollery CT, Inman WHW, et al. Postmarketing surveillance of enalapril II: investigation of the potential role of enalapril in deaths with renal failure. *Br Med J*. 1988;297:830-832
- Stambe C, Atkins RC, Hill PA, Nikolic-Paterson DJ. Activation and cellular localization of the p38 and JNK MAPK pathways in rat crescentic glomerulonephritis. *Kidney Int* 2003;64(6):2121-32.
- Stambe C, Atkins RC, Tesch GH, Kapoun AM, Hill PA, Schreiner GF, et al. Blockade of p38 $\alpha$  MAPK ameliorates acute inflammatory renal injury in rat anti-GBM glomerulonephritis. *J Am Soc Nephrol* 2003;14(2):338-51.
- Suzuki H, Uchida K, Nitta K, Nihei H. Role of mitogen-activated protein kinase in the regulation of transforming growth factor-beta-induced fibronectin accumulation in cultured renal interstitial fibroblasts. *Clin Exp Nephrol* 2004;8(3):188-95.
- Swartbol P, Thorvinger BO, Parsson H, et al. Renal Artery Stenosis in patients with peripheral vascular disease and its correlation to hypertension. A retrospective study. *Int Angiol* 1992; 11:195-199.
- Tamaki K, Okuda S, Ando T, Iwamoto T, Nakayama M, Fujishima M. TGF- $\beta$ 1 in glomerulosclerosis and interstitial fibrosis of adriamycin nephropathy. *Kidney Int* 1994;45:525-536.
- Textor SC, Novick AC, Steinmuller DR, Streem SB. Renal failure limiting antihypertensive therapy as an indication for renal revascularization. *Arch Int Med*. 1983;143:2208-2211
- Textor SC, Wilcox CS. Renal artery stenosis: a common, treatable cause of renal failure? *Annu Rev Med* 2001;52:421-42.
- Textor SC. Ischemic nephropathy: where are we now? *J Am Soc Nephrol* 2004;15(8):1974-82.
- Textor SC. Managing renal arterial disease and hypertension. *Curr Opin Cardiol* 2003;18(4):260-7.
- Textor SC. Progressive hypertension in a patient with "incidental" renal artery stenosis. *Hypertension* 2002;40(5):595-600.

- Textor SC. Stable patients with atherosclerotic renal artery stenosis should be treated first with medical management. *Am J Kidney Dis* 2003;42(5):858-63.
- Textor S, Lehrman L, and McKusick M. The Uncertain Value of Renal Artery Interventions: Where Are We Now? *J. Am. Coll. Cardiol. Interv.* 2009;2;175-182
- Toyoda M, Suzuki D, Honma M, Uehara G, Sakai T, Umezono T, et al. High expression of PKC-MAPK pathway mRNAs correlates with glomerular lesions in human diabetic nephropathy. *Kidney Int* 2004;66(3):1107-14.
- Tsuzuki S, Matoba T, Eguchi s, aaInagami T. A-II type 2 receptor inhibits cell proliferation and activates tyrosine phosphatase. *Hypertension*. 1996;28:916-918
- Valabhji J, Robinson S, Poulter C, Robinson AC, Kong C, Henzen C, et al. Prevalence of renal artery stenosis in subjects with type 2 diabetes and coexistent hypertension. *Diabetes Care* 2000;23(4):539-43.
- Wada T, Furuichi K, Sakai N, Hisada Y, Kobayashi K, Mukaida N, et al. Involvement of p38 mitogen-activated protein kinase followed by chemokine expression in crescentic glomerulonephritis. *Am J Kidney Dis* 2001;38(6):1169-77.
- Weber-Mzell D, Kotanko P, Schumacher M, Klein W, Skrabal F. Coronary anatomy predicts presence or absence of renal artery stenosis. A prospective study in patients undergoing cardiac catheterization for suspected coronary artery disease. *Eur Heart J* 2002;23(21):1684-91.
- Wenzel UO, Wolf G, Jacob I, Schwegler C, Qasqas A, Amann K, et al. Beneficial and adverse renal and vascular effects of the vasopeptidase inhibitor omapatrilat in renovascular hypertensive rats. *Nephrol Dial Transplant* 2003;18(10):2005-13.
- Wenzel UO, Wolf G, Jacob I, Thaiss F, Helmchen U, Stahl RA. Chronic anti-Thy-1 nephritis is aggravated in the nonclipped but not in the clipped kidney of Goldblatt hypertensive rats. *Kidney Int* 2002;61(6):2119-31.
- Wiesel P, Mazzolai L, Nussberger J, Pedrazzini T. Two-kidney, one clip and one-kidney, one clip hypertension in mice. *Hypertension* 1997;29(4):1025-30.
- Wilson C, Byrom F. Renal changes in malignant hypertension. *Lancet* 1939;1:136-39.
- Wilson C, Byrom F. The vicious circle in chronic Bright's disease: experimental evidence from the hypertensive rat. *QJ Med* 1940;10:65-96.
- Wolf G, Reinking R, Zahner G, Stahl RA, Shankland SJ. Erk 1,2 phosphorylates p27(Kip1): Functional evidence for a role in high glucose-induced hypertrophy of mesangial cells. *Diabetologia* 2003;46(8):1090-9.
- Wolf G. A-II as a mediator of tubulointerstitial injury. *Nephrol Dial Transplant*. 2000;15:61-63
- Wolf, Gunter, Thomas Jocks, Gunther Zahner, Ulf Panzer, and Rolf A. K. Stahl. Existence of a regulatory loop between MCP-1 and TGF-  $\beta$  in glomerular immune injury. *Am J Physiol Renal Physiol* 283: F1075-F1084, 2002
- Wright JR, Duggal A, Thomas R, Reeve R, Roberts IS, Kalra PA. Clinicopathological correlation in biopsy-proven atherosclerotic nephropathy: implications for renal functional outcome in atherosclerotic renovascular disease. *Nephrol Dial Transplant* 2001;16(4):765-70.
- Xia Z, Dickens M, Raingeaud J, Davis RJ, Greenberg ME. Opposing effects of ERK and JNK-p38 MAP kinases on apoptosis. *Science* 1995;270(5240):1326-1331.
- Xie L, Law BK, Chytil AM, Brown KA, Aakre ME, Moses HL. Activation of the Erk pathway is required for TGF-beta1-induced EMT in vitro. *Neoplasia* 2004;6(5):603-10.

- Yang J, Liu Y. Blockage of tubular epithelial to myofibroblast transition by hepatocyte growth factor prevents renal interstitial fibrosis. *J Am Soc Nephrol* 2002;13(1):96-107.
- Yang J, Liu Y. Dissection of key events in tubular epithelial to myofibroblast transition and its implications in renal interstitial fibrosis. *Am J Pathol* 2001;159(4):1465-75.
- Yang M, Huang H, Li J, Li D, Wang H. Tyrosine phosphorylation of the LDL receptor-related protein (LRP) and activation of the ERK pathway are required for connective tissue growth factor to potentiate myofibroblast differentiation. *Faseb J* 2004;18(15):1920-1.
- Yu L, Hebert MC, Zhang YE. TGF-beta receptor-activated p38 MAP kinase mediates Smad-independent TGF-beta responses. *Embo J* 2002;21(14):3749-59.
- Zhu X-Y, Chade AR, Krier J, Daghini E, Lavi R, Guglielmotti A, Lerman A, Lerman LO. The chemokine monocyte chemoattractant protein-1 contributes to renal dysfunction in swine renovascular hypertension. *J Hypertens* 2009; 27:2063-2073
- Zoja C, Corna D, Benedetti G, Morigi M, Donadelli R, Guglielmotti A, et al. Bindarit retards renal disease and prolongs survival in murine lupus autoimmune disease. *Kidney Int* 1998; 53:726-734

IntechOpen



### **Recent Advances in Cardiovascular Risk Factors**

Edited by Prof. Mehnaz Atiq

ISBN 978-953-51-0321-9

Hard cover, 522 pages

**Publisher** InTech

**Published online** 21, March, 2012

**Published in print edition** March, 2012

Among the non-communicable diseases, cardiovascular disorders are the leading cause of morbidity and mortality in both the developed and the developing countries. The spectrum of risk factors is wide and their understanding is imperative to prevent the first and recurrent episodes of myocardial infarction, stroke or peripheral vascular disease which may prove fatal or disabling. This book has tried to present an update on risk factors incorporating new research which has thrown more light on the existing knowledge. It has also tried to highlight regional diversity addressing such issues. It will hopefully be resourceful to the cardiologists, general practitioners, family physicians, researchers, graduate students committed to cardiovascular risk prevention.

#### **How to reference**

In order to correctly reference this scholarly work, feel free to copy and paste the following:

Blake Fechtel, Stella Hartono and Joseph P. Grande (2012). Pathogenesis of Renovascular Hypertension: Challenges and Controversies, Recent Advances in Cardiovascular Risk Factors, Prof. Mehnaz Atiq (Ed.), ISBN: 978-953-51-0321-9, InTech, Available from: <http://www.intechopen.com/books/recent-advances-in-cardiovascular-risk-factors/pathogenesis-of-renovascular-hypertension-challenges-and-controversies>

**INTech**  
open science | open minds

#### **InTech Europe**

University Campus STeP Ri  
Slavka Krautzeka 83/A  
51000 Rijeka, Croatia  
Phone: +385 (51) 770 447  
Fax: +385 (51) 686 166  
[www.intechopen.com](http://www.intechopen.com)

#### **InTech China**

Unit 405, Office Block, Hotel Equatorial Shanghai  
No.65, Yan An Road (West), Shanghai, 200040, China  
中国上海市延安西路65号上海国际贵都大饭店办公楼405单元  
Phone: +86-21-62489820  
Fax: +86-21-62489821



© 2012 The Author(s). Licensee IntechOpen. This is an open access article distributed under the terms of the [Creative Commons Attribution 3.0 License](https://creativecommons.org/licenses/by/3.0/), which permits unrestricted use, distribution, and reproduction in any medium, provided the original work is properly cited.

IntechOpen

IntechOpen