

# We are IntechOpen, the world's leading publisher of Open Access books Built by scientists, for scientists

6,900

Open access books available

185,000

International authors and editors

200M

Downloads

Our authors are among the

154

Countries delivered to

TOP 1%

most cited scientists

12.2%

Contributors from top 500 universities



WEB OF SCIENCE™

Selection of our books indexed in the Book Citation Index  
in Web of Science™ Core Collection (BKCI)

Interested in publishing with us?  
Contact [book.department@intechopen.com](mailto:book.department@intechopen.com)

Numbers displayed above are based on latest data collected.  
For more information visit [www.intechopen.com](http://www.intechopen.com)



## Amoebiasis in the Tropics: Epidemiology and Pathogenesis

A. Samie<sup>1</sup>, A. ElBakri<sup>2</sup> and Ra'ed AbuOdeh<sup>2</sup>

<sup>1</sup>Molecular Parasitology and Opportunistic Infection Program, Department of Microbiology, University of Venda, Private Bag X5050 Thohoyandou 0950

<sup>2</sup>Medical Laboratory Technology Department, College of Health Sciences, University of Sharjah, Sharjah,

<sup>1</sup>South Africa

<sup>2</sup>United Arab Emirates

### 1. Introduction

*Entamoeba histolytica* is a protozoan parasite that causes amebic dysentery and liver abscess. The disease is common in tropical regions of the world where hygiene and sanitation is often approximate. The epidemiology of *E. histolytica* has been studied around the world. However, there is a dearth of comprehensive literature on the epidemiology of this pathogen as well as its pathogenicity in the tropical and underdeveloped regions of the world where the disease is actually more common. Epidemiological figures in many endemic tropical countries are often overestimated because of inaccurate identification. Accurate data on the prevalence of the pathogenic strain(s) of *E. histolytica* in those regions will allow for the effective cure of patients with anti-amoebic drugs thus preventing the development of resistant types and reducing management costs.

With the advents of HIV and AIDS, several organisms have been identified as potential opportunistic pathogens. However, it is not clear whether amoebiasis is an opportunistic infection or not. Up to date, very little data has been published on the occurrence of *E. histolytica* in relation to HIV and AIDS. In developed countries amebiasis tends to be more common in older patients and occurs mostly among men who have sex with men or in institutions. However, in tropical regions, the epidemiology of amoebiasis is completely different and is more common among the general population and particularly among patients attending health care centers with diarrhea. Therefore, it is important to understand the epidemiology of this pathogen in tropical areas where it is responsible for most morbidity and mortality.

The recent reclassification of *E. histolytica* into different species now including the pathogenic *Entamoeba histolytica* and the non pathogenic *Entamoeba dispar* and *Entamoeba moshkovskii* has further added to the complexity of the epidemiology of amoebiasis since these three species cannot be differentiated by microscopy that is the most commonly used diagnostic method particularly in tropical countries where resources are limited, but can only be differentiated by the use of molecular methods such as the polymerase chain reaction based methodologies. Recent development of simpler but more sensitive methods

such as the Loop-Mediated Isothermal Amplification (LAMP) should improve the understanding of the epidemiology of this disease.

Over the past few years we have studied the epidemiology of *E. histolytica* in African countries (Cameroon, Zimbabwe, and South Africa). In the present chapter, we review these and other studies conducted in the African continent as well as other tropical regions in the light of new and more specific and sensitive molecular methods. The pathogenesis mechanism of amoebiasis is still not clear and recently differences in population levels of *E. histolytica* strains isolated from asymptomatic and symptomatic individuals have been shown to exist. One of the factors believed to be the determinant of the various clinical presentations of the disease is the organism's virulence. The different methodologies used for the detection and epidemiology of amoebiasis will be reviewed as well as the role of *E. histolytica* in HIV disease. Recent advances on the pathogenesis and control of amoebiasis will also be reviewed.

Amoebiasis caused by the protozoan parasite *E. histolytica* was first recognized as a deadly disease by Hippocrates who described a patient with fever and dysentery (460 to 377 B.C.). With the application of a number of new molecular biology-based techniques, tremendous advances have been made in our knowledge of the diagnosis, natural history, and epidemiology of amoebiasis. Amoebiasis remains an important health problem in tropical countries where sanitation infrastructure and health are often inadequate (Ximénez et al., 2009). Clinical features of amoebiasis range from asymptomatic colonization to amoebic colitis (dysentery or diarrhea) and invasive extraintestinal amoebiasis, which is manifested most commonly in the form of liver abscesses (Fotedar et al., 2007). Current WHO estimates of 40-50 million cases of amoebic colitis and amoebic liver abscess (ALA) and up to 100,000 deaths annually, place amoebiasis second only to malaria in mortality (Stanley 2003; Ravdin 2005; WHO/PAHO/UNESCO 1997). Global statistics on the prevalence of *E. histolytica* infection indicates that 90% of individuals remain asymptomatic while the other 10% develop clinically overt disease (Jackson et al., 1985; Haque et al., 1999). Although all the deaths could be due to invasive *E. histolytica* infections, the value for the prevalence of *E. histolytica* is an overestimate since it dates from before the separation of the pathogen *E. histolytica* from the non-pathogen *E. dispar* (Diamond & Clark, 1993). Recently however, *Entamoeba moshkovskii*, a morphologically identical species, has been detected in individuals inhabiting endemic areas of amoebiasis (Ali et al., 2003, Fotedar et al., 2008, Khairnar et al., 2007, Parija & Khairnar, 2005) and could be contributing to the prevalence figures. Thus, the reclassification of *E. histolytica* into the three morphologically identical yet genetically different species has further added to the complexity of the epidemiology of amoebiasis since they cannot be differentiated by microscopy that is the most commonly used diagnostic method particularly in tropical countries where resources are limited. Furthermore, the worldwide prevalence of these species has not been specifically estimated. Thus, obtaining accurate species prevalence data remains a priority as there are gaps in our knowledge for many geographic regions of the tropics.

Although only a minority of *E. histolytica* infections - one in every four asymptomatic intestinally infected individuals - progress to development of clinical symptoms (Gathiram and Jackson, 1987; Blessmann et al., 2003; Haque et al., 2006), the exact basis for this difference remains mostly unsolved. This might be partly due to the differences in the pathogenic potential of the infecting strains (Burch et al., 1991) and/or the parasite genotype

(Ali et al., 2007) or due to the variability of the host immune response against amoebic invasion (Mortimer and Chadee, 2010).

The disease mechanism and the exact prevalence and incidence of infection caused by *E. histolytica* are still unknown. The epidemiological data available for endemic countries however, albeit sporadic, is based mostly on the microscopic identification of the *E. histolytica*/*E. dispar*/*E. moshkovskii* complex, often inaccurately reported as "*E. histolytica*". To date many highly sensitive and specific techniques such as enzyme-linked immuno-sorbent assays (ELISA) and polymerase chain reaction (PCR) have been developed for the accurate identification and detection of *E. histolytica* in various clinical samples (Ackers, 2002). It is anticipated that these molecular tools will allow us to reconstruct a more reliable picture of the true epidemiology of the disease mainly in endemic regions of the world and to better our understanding of the role of the parasite and/or host factors that determine the disease outcome.

## 2. Biology of *Entamoeba histolytica*

*Entamoeba histolytica* trophozoites (Figure 1) live and multiply indefinitely within the mucosa of the large intestine feeding normally on starches and mucous secretions and interacting metabolically with the host's gut bacteria. However, such trophozoites commonly initiate tissue invasion when they hydrolyze mucosal cells and absorb the predigested products in order to meet their dietary provisions. Filopodia (tiny cytoplasmic extensions) that form from the surface of their trophozoites are believed to play a role in the pathogenicity of certain strains. Examples of functions related to pathogenesis include: endocytosis and/or pinocytosis, exocytosis, tissue penetration, cytotoxic substances release or contact cytolysis of host cells. Other host factors that may also influence the invasiveness of *E. histolytica* are the oxidation-reduction potential and gut contents pH both of which are largely influenced by the overall nutritional state of the host.

Once the parasites invade the intestinal wall, they reach the submucosa and the underlying blood vessels. From there, trophozoites travel in the blood to sites such as the liver, lungs or skin. These parasite forms are now considered to be dead-end course since they cannot leave the host and cause infection in others. Encystation occurs in the intestinal lumen, and cyst formation is complete when four nuclei are present. These infective cysts are passed into the environment in human feces and are resistant to a variety of physical conditions. On occasions, trophozoites may exit in the stool, but they cannot survive outside the human host. The signals leading to encystations or excystation are poorly understood, but findings in the reptilian parasite *Entamoeba invadens* suggest that ligation of a surface galactose-binding lectin on the surface of the parasite might be the one trigger for encystations (Stanley, 2003; Eichinger, 2001). Also, several previous proteomic and transcriptomic studies have shown that a few dozens of Rab genes/proteins are involved in important biological processes, such as stress response, virulence, and pathogenesis, and stage conversion (Picazarri et al., 2008; Chatterjee et al., 2009; Novick and Zerial, 1997; Stenmark, 2009; Nozaki and Nakada-Tsukui, 2006). EhRab11A was reported to be recruited to the cell surface by iron or serum starvation, and was suggested to be involved in encystation (McGugan and Temesvari, 2003). In contrast, EhRab11B is involved in cysteine protease secretion, and its overexpression enhanced the secretion of cysteine protease (Mitra et al., 2007; Nozaki and Nakada-Tsukui, 2006).

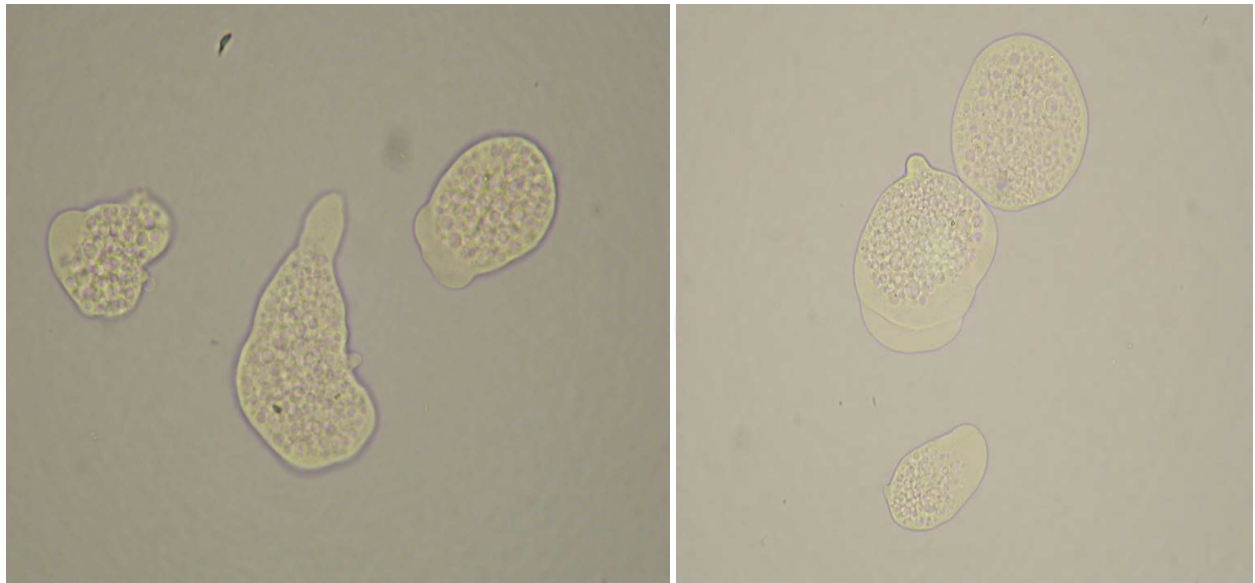


Fig. 1. *Entamoeba histolytica* trophozoites observed under the microscope stain with methylene blue (Observe that the cells did not accept the stain since they were still alive at the time the picture was taken) (Photos by Samie A)

The life cycle of *E. histolytica* is simple and consists of an infective cyst stage (10 to 15  $\mu\text{m}$  in diameter) and a multiplying trophozoite stage (10 to 60  $\mu\text{m}$  in diameter). Like other protozoa, *E. histolytica* appears incapable of de novo purine synthesis. Biochemical analysis has indicated that glutathione is not present. For this reason, *E. histolytica* is different from higher eukaryotes. It also uses pyrophosphate instead of ATP (McLaughlin and Aley, 1985). Mature cysts in the large intestine leave the host in large numbers and remain viable and infective in a moist, cool environment for at least 12 days. In water, cysts can live for up to 30 days. Nonetheless, they are rapidly killed by desiccation, and temperatures below 5°C and above 40°C. Mature cysts are also resistant to chlorine levels normally used to disinfect water. When swallowed, cysts pass through the stomach unharmed. In the small intestine, where conditions are alkaline and as a result of nuclear division, eight motile trophozoites are produced. These motile trophozoites then settle in the large intestine lumen, where they divide by binary fission and feed on host cells, bacteria and food particle (Figure 2). This is the first chance of the parasite making contact with the mucosa.

The organisms' biochemistry and metabolism have been reviewed by McLaughlin and Aley (1985). It has many hydrolytic enzymes, including phosphatases, glycosidases, proteinases, and an RNase. Major metabolic end products are carbon dioxide, ethanol and acetate. *E. histolytica* is more of a metabolic opportunist which is able to exploit oxygen when it is present in the environment. Glucose is metabolized via the Embden-Meyerhof pathway exclusively, and fructose phosphate is phosphorylated, prior to lysis, by enzymatic reactions unique to *Entamoeba* spp. Pyruvate is converted mostly to ethanol, even in the presence of oxygen, via coenzyme-A, and pyruvate oxidase. Terminal electron transfers are accomplished with ferredoxinlike iron-sulphur proteins, a trait that may contribute to the efficacy of metronidazole in treatment. Similar metabolic traits in *Trichomonas vaginalis* and *Giardia lamblia* also are metronidazole targets. Mitogen Activated Protein Kinases (MAPK) – a group of proline directed serine/threonine kinases



(Bardwell, 2006) - regulate a number of different cellular processes such as proliferation, and response to a variety of environmental stresses like osmotic stress, heat shock and hypoxia (Junttila, 2008). The existence of MAPK homologues has been documented in certain parasitic protozoa. For instance ERK1 and ERK2 homologues of *Giardia lamblia* have been shown to play a critical role in trophozoite differentiation into cysts (Ellis et al., 2003), Pfmap2, a MAPK homologue in *Plasmodium falciparum* is essential for the completion of the asexual phase of the parasite lifecycle (Dorin-Semblat et al., 2006) and *Leishmania major* MAPK homologues exhibit an increased phosphotransferase activity in response to pH and temperature shift (Morales et al., 2007). On the other hand, *E. histolytica* has been shown to possess a single homologue of a typical MAPK gene (EhMAPK). Activation of EhMAPK in *E. histolytica* has been found to be associated with stress survival such as heat shock and oxidative stress response (Ghosh et al, 2010).

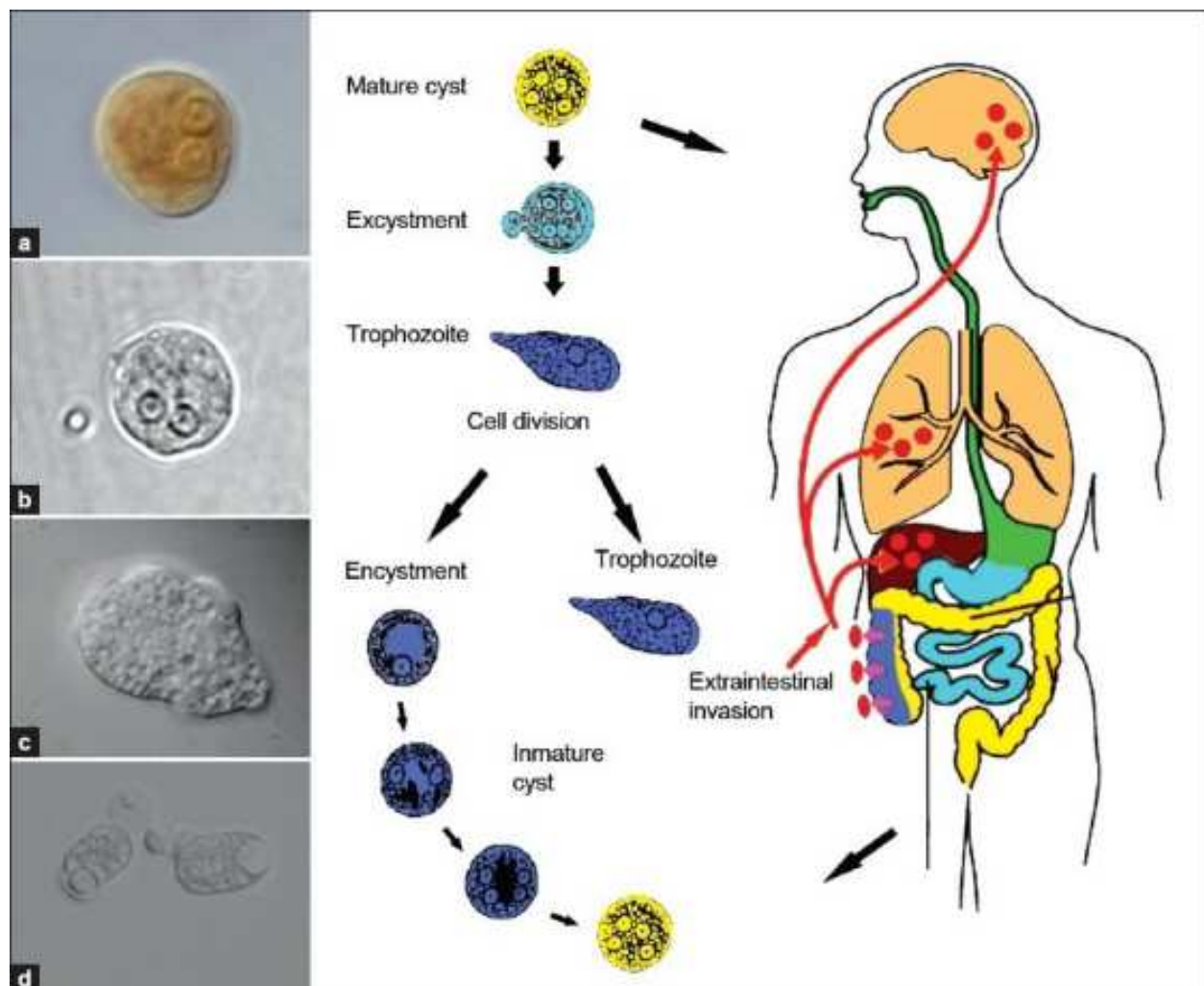


Fig. 2. Life cycle of *E. histolytica*/*E. dispar*. a) Mature cyst stained with 4% Lugol solution (100× magnification). b) Mature cyst without staining (100×). c) Trophozoite observed with differential interference contrast (DIC) (100×). d) Trophozoites of *E. histolytica* species with phagocytosed erythrocytes (DIC 40×). Obtained with permission from Ximenez et al (2011).

### 3. Epidemiology of amoebiasis and its occurrence in the era of HIV and AIDS

The epidemiology of amoebiasis around the world is complicated by the existence of three different forms that are morphological identical but genetically distinct and include *E. histolytica* which is a known pathogen, *E. dispar* and *E. moshkovskii* which are non pathogens (Ali et al., 2008). This is particularly relevant to the African continent as well as many other developing countries in the world, including Latin American and Asian countries, where there is lack of specific diagnostic tools. According to some studies conducted in some African countries (Alonzo et al., 1993; Molback et al., 1994; Njoya et al., 1999; Roche et al., 1999) from 6% to 75% of the population carry the parasite. These studies were conducted using microscopic examination giving a general idea on the distribution of the disease in the population. Such results require confirmation by techniques that clearly differentiate *E. histolytica* from *E. dispar*, which is not pathogenic. Countries in Central and Latin America where the parasite displays endemic behavior include Mexico, Brazil, and Ecuador. In Mexico for example, the incidence rate of intestinal amoebiasis from 1995 to 2000 was reported to be between 1000 and 5000 cases/100,000 inhabitants annually. Incidence values from 2002 to 2006 were 1128.8 to 615.85/100,000 inhabitants per year. As in other developing countries, those under 15 years of age were the most frequently affected group, with a notable increase in children aged 5–9 (Ximenez, 2009). In Aracaju, Brazil, Lawson et al (2004) demonstrated *E. histolytica* in 1% of cases whereas *E. dispar* was found in 13% of the cases. Whilst in Pernambuco state, northeastern Brazil *E. dispar* was found in 74.19% of culture positive samples using the PCR method, no *E. histolytica* was reported (Pinheiro et al., 2004). In a remote area of Ecuador, Gatti et al (2002) using isoenzyme analysis reported an 18.9% infection rate with *E. histolytica* while 70.3% were infected with *E. dispar*. In the Indian subcontinent, the prevalence of intestinal amoebiasis among hospitalized patients was found to be around 11.7% using microscopy. However, using molecular biology tools such as PCR, *E. histolytica* was shown to be in 3.5% of those infected (Khairnar et al., 2007). In another endemic country such as Bangladesh and using ELISA antigen detection kits, *E. histolytica* prevalence was found to be 4.2% among children living in the urban slums of Dhaka (Haque et al. 2006). Many studies have been conducted in different parts of the world, (Ghosh et al., 2000) but the region most concerned by this problem (Africa) remains unexplored. Thus, the epidemiology of amoebiasis still remains very uncertain particularly in this part of the world.

Following the HIV/AIDS pandemic, numerous studies demonstrated that intestinal parasites such as *Cryptosporidium* sp, *Microsporidia* sp, *Isospora belli*, and *Cyclospora cayetenensis* were frequently associated with episodes of severe and often fatal diarrhea in both industrialized and poor countries. There have been controversies around the impact of HIV on the occurrence of amoebiasis. However, recent data have shown an increase in the occurrence of *E. histolytica* among HIV patients in countries such as Japan, Mexico, Taiwan, and South Africa (Moran et al., 2005; Hung et al., 2008; Samie et al., 2009; Watanabe et al., 2011). With the hall mark of HIV infection being the depletion of CD4+ T cells count (below 200 cells/ $\mu$ l) and the progressive decline of the mucosal immunologic defense mechanisms, HIV/AIDS patients become prone to life-threatening gastrointestinal manifestations such as diarrhea (Stark et al., 2009). Table 1 provides a summary of the prevalence studies reporting *E. histolytica* and/or *E. histolytica* / *E. dispar* infections in HIV positive individuals in different countries. The association of *E. histolytica* infections with HIV positive individuals in some studies is not clear-cut. In a Mexican study no clear association between *E. histolytica* and

HIV has been noted. In this study, the prevalence of *E. histolytica* in HIV/ AIDS patients was 25.3% compared to 18.4% in a control HIV-group (Moran et al., 2005). Other studies in South American countries have shown no obvious association. However, a significant association between high levels of serum anti-*E. histolytica* antibodies and the presence of *E. histolytica* in the stool has been noted in studies from both Vietnam (Blessman et al., 2006) and Africa (Stauffer et al., 2006). In a South African study in the Vhembe district in the northern part of the country, a positive association between *E. histolytica* infection and HIV-positive individuals has been indicated. Among the HIV-positive individuals, those with CD4+ count less than 200 cells/ $\mu$ l, were relatively more likely to be seropositive for *E. histolytica* (Samie et al., 2010). In a Chinese study, a higher seroprevalence of *E. histolytica* infections was also found in HIV-infected patients (Chen et al, 2007). Furthermore, two studies conducted in Taiwan revealed a positive association as well (Hung et al., 2005; Tsai et al., 2006).

Country	Prevalence of <i>Entamoeba species</i>	Reference
Cuba	1.5% ( <i>E. histolytica</i> / <i>dispar</i> )	Escobedo, A. A. 1999
Bogota, Colombia	13% ( <i>E. histolytica</i> )	Florez et al., 2003
San Pedro Sula, Honduras	5.8% ( <i>E. histolytica</i> )	Lindo et al., 1998
Venezuela (Zulia state)	10.8% ( <i>E. histolytica</i> )	Rivero et al., 2009
Brazil	3.3% and 1% ( <i>E. histolytica</i> / <i>dispar</i> before and after HAART)	Bachur et al., 2008
Mexico	25.3% in HIV+ and 18.5% in HIV-contacts ( <i>E. histolytica</i> )	Moran et al., 2005
Tajikistan	25.9% ( <i>E. histolytica</i> / <i>dispar</i> non HIV)	Matthys et al., 2011
Northern India	7.7% ( <i>E. histolytica</i> )	Prasad et al., 2000
Taiwan	5.8% ( <i>E. histolytica</i> in HIV patients)	Hung et al., 2008
Bangladesh	2.1% vs. 1.4% in diarrhea and control ( <i>E. histolytica</i> )	Haque et al., 2009
India (Kolkata)	3.6% ( <i>E. histolytica</i> )	Mukherjee et al., 2010
Sydney, Australia	3.2% ( <i>E. histolytica</i> / <i>E. dispar</i> )	Stark et al., 2007
Mazandaran province, Iran	1.6% ( <i>E. histolytica</i> )	Daryani et al., 2009
Uganda	1.4% ( <i>E. histolytica</i> )	Brink et al., 2002
Ethiopia	10.3% ( <i>E. histolytica</i> )	Hailemariam et al., 2004
Dakar, Senegal	5.1% ( <i>E. histolytica</i> )	Gassama et al., 2001
South Africa	12.4% ( <i>E. histolytica</i> )	Samie et al., 2006

Table 1. Global prevalence of *E. histolytica* in HIV-infected and non-infected persons.

Over the past decade, there has been an increasingly reported risk of amebiasis in East Asian countries like Japan, Taiwan and South Korea particularly among men who have sex with men (MSM) probably due to oral-anal sexual contact (Hung et al., 2008; Watanabe et al., 2011). In Japan, *E. histolytica* often occur in institutions of mentally retarded individuals where outbreaks of amebiasis have been described with the prevalence rate and positive serology rate as high as 38.2% and 67.1%, respectively (Nishise et al., 2010) and has been



occurring more often in HIV positive patients (Watanabe et al., 2011). In addition to HIV/AIDS, the increasing use of organ transplants and other immunosuppressed conditions such as neutropenia have been considered important risk factor for invasive amoebiasis in many countries. In Colombia for example, a study of organ transplant patients revealed that about 24.7% had detectable anti-amoebic antibodies (Reyes et al., 2006) whereas in another study 14.3% neutropenic patients were found to have anti-amoebic antibodies (Cardona et al., 2004).

Certain risk behaviors, such as homosexual relations and practicing oro-anal sex, can exacerbate the possibility of acquiring *E. histolytica* infections as well as other intestinal parasites such as *Cryptosporidium* spp., where the symptomatic pictures are more severe than those of immunocompetent individuals (Tatiana et al., 2008; Hung 2008). A recent study in Vietnam had indicated that socio-economic and personal hygiene factors determined infection with *E. histolytica*, rather than exposure to human and animal excreta in agricultural activities (Pham duc et al., 2011). In a study in Bangladesh, it was shown that wet environment is not the only factor that affects the detection curve of *E. histolytica*, but anti-Carbohydrate Recognition Domain IgA level in the gut is another determining factor for its occurrence in a closed population (Haque et al., 2006). Although, numerous seroprevalence studies suggest that HIV/AIDS individuals are at a higher risk of *E. histolytica* infections and are therefore more likely to develop symptomatic infections or severe forms of the disease, modest data exist to support these findings and further research is needed to confirm this hypothesis.

#### 4. Diagnosis of amoebiasis

Amoebiasis diagnosis rests on the demonstration of *E. histolytica* trophozoites or cysts in stool or colonic mucosa of patients. For many years a direct smear examined either as a wet mount or fixed and stained was done by microscopic examination of stool. Repeated stool sample examinations (at least three) may be needed. The presence of haematophagous amoebic trophozoites in a stool sample has always suggested *E. histolytica* infections (Gonzalez-Ruiz, A. et al 1994). Nonetheless, the specificity of this finding was further reduced when it was demonstrated that in some patients *E. dispar* also contains RBCs (Fotedar et al., 2007). Also, in view of the high frequency of *E. dispar* in many areas, dysentery due to entities such as shigellosis and campylobacter will probably be misdiagnosed as amoebic colitis if microscopy is the sole diagnostic criteria (Stanley 2003). However, in the absence of haematophagous trophozoites, the sensitivity of microscopy is limited by its ability to distinguish between samples infected with *E. histolytica* and the morphologically identical *E. dispar* and *E. moshkovskii*. Confusion between *E. histolytica*, other non-pathogenic amoeba and white blood cells such as macrophages and polymorphonuclear cells in feces frequently result in the overdiagnosis of amoebiasis. Delays in the processing of stool samples affect the sensitivity of light microscopy, which under the best circumstances is only 60% of that of the stool culture method followed by isoenzyme analysis (Krogstad et al., 1978).

Stool culture technique followed by isoenzyme analysis has been considered as the "gold standard" for many years. This method has been used to distinguish between *E. histolytica* and *E. dispar*. For more details on the culture technique the reader is advised to consult reference (Clark and Diamond, 2002). Culture of *E. histolytica* can be performed from fecal specimens, rectal biopsy specimens, or liver abscess aspirates. However, the process usually

takes between 1-4 weeks to perform and requires sophisticated laboratory equipment making it not feasible as a routine procedure especially in the developing world where *E. histolytica* is rampant. The rate of success of *E. histolytica* culture in reference laboratories has been reported to be between 50 and 70%. Moreover, isoenzyme (zymodeme) analysis is labor intensive, costly and often produces false-negative results for many microscopy positive stool specimens (Strachan et al., 1988).

Serological methods may be useful diagnostically to detect infections with *E. histolytica* in developed countries where infections are not as common as in endemic developing nations (Ohnishi et al., 1997). In developing countries individuals are constantly exposed to *E. histolytica* making serological tests unable to definitively distinguish past from current infections (Caballero et al., 1994). Amoebic serology is highly sensitive and specific for the diagnosis of ALA (Zengzhu et al., 1999). Conversely, a study of asymptomatic individuals living in an *E. histolytica* endemic area of Vietnam revealed that about 83% of those infected had detectable anti-amoebic antibodies (Blessmann et al., 2002). Several assays for the detection of antibodies to *E. histolytica* infections have been developed (Table 2). These include: indirect hemagglutination (IHA), latex agglutination, immunoelectrophoresis, counterimmunoelectrophoresis (CIE), the amebic gel diffusion test, immunodiffusion, complement fixation, indirect immunofluorescence assay (IFA), and enzyme-linked immunosorbent assay (ELISA). With the exception of ELISA, all the other tests have been either costly to perform (Complement fixation), less sensitive and nonspecific (IHA and Latex agglutination test), time consuming (immunodiffusion) or requires skills in culture and antigen preparation (IFA) (Fotedar et al., 2007).

Serological Assay	Sensitivity (%)	Specificity (%)	Reference(s)
IHA	100 <sup>a</sup> , 99	90.9-100 <sup>a</sup> , 99.8	Pillai et al., 1999; Hira et al., 2001
Novagnost <i>Entamoeba</i> IgG	>95	>95	Manufacturer’s recommendation
I.H.A. Amoebiasis	93	97.5	Robert et al., 1990
Amebiasis Serology microplate ELISA	95	97	Manufacturer’s recommendation
RIDASCREEN <i>Entamoeba</i> (IgG detection)	100, 97.7-100 (100)	95.6, 97.4 (100)	Manufacturer’s recommendation; Knappik et al., 2005

Table 2. List of some of the commercially available antibody assays used for the diagnosis of amoebiasis.

ELISA is a reliable, easy to perform and rapid method for the diagnosis of *E. histolytica* infections especially in developing countries. It has been used widely for the study of the epidemiology and diagnosis of symptomatic amoebiasis (intestinal and/or extraintestinal). An ELISA to detect antibodies to *E. histolytica* has been shown to be 97.9% sensitive and 94.8% specific for detection of *E. histolytica* antibodies in ALA patients in a non endemic country (Hira et al., 2001). Unlike IgG, immunoglobulin M (IgM) is short lived and does not

remain in the serum for longer periods making it a very useful marker for the detection of present or current *E. histolytica* infections. An ELISA for the detection of serum IgM antibodies to the amoebic Gal or GalNAc-inhibitable adherence lectin has been reported. In this study, conducted in Egypt, anti-lectin IgM antibodies in the serum were detected in 45% of patients who had been suffering from acute colitis for <1 week (Abd-Alla et al., 1998). Since there is no cross-reaction with other non-*E. histolytica* parasites (Goncalves et al., 2004), the use of ELISA thus seems to be an excellent choice for the routine laboratory diagnosis as well as the surveillance and control of amoebiasis in the developing world.

The newer methods available to distinguish between *E. dispar* and *E. histolytica* have thrown into question the commonly accepted figure of 500 million infections worldwide suggesting that the actual number may be closer to 50 million. PCR and monoclonal antibody techniques are now available to distinguish between these three species in fresh and preserved stool samples, including those with mixed infections. Several investigators have developed ELISAs that detect antigens in fresh stool samples with sensitivity closer to that of stool culture methods and PCR. These ELISAs are usually easy and rapid to perform. Copro-antigen based ELISA kits specific for *E. histolytica* exploit monoclonal antibodies against the Gal/GalNAc-specific lectin of *E. histolytica* (*E. histolytica* II; TechLab, Blacksburg, VA) or against serine-rich antigen of *E. histolytica* (Optimum S kit; Merlin Diagnostika, Bornheim-Hersel, Germany). Other ELISA kits include the Entamoeba CELISA PATH kit (Cellabs, Brookvale, Australia) and the ProSpecT EIA (Remel Inc.; previously manufactured by Alexon-Trend, Inc., Sunnyvale, CA) (Fotedar et al., 2007). The early nineties of the 20<sup>th</sup> century have witnessed the introduction by TechLab of an ELISA kit for the specific detection of *E. histolytica* in feces. This antigen detection test captures and detects the parasite's Gal/GalNAc lectin in stool samples. It can also be used for the detection of the lectin antigen in the serum and liver abscesses in patients with invasive intestinal amoebiasis and ALA (Haque et al., 2000). However, the diagnosis of ALA normally relies on the identification of liver lesions and positive anti-*E. histolytica* serology. Yet neither provides conclusive results for ALA. The Gal/GalNAc lectin is conserved and highly immunogenic, and because of the epitopic differences in the lectins of *E. histolytica* and *E. dispar*, the test enables specific identification *E. histolytica* (Haque et al., 1993; Mirelman 1997). Because of some disadvantages observed with the TechLab ELISA kit, a newer more sensitive and specific version, TechLab *E. histolytica* II kit, was produced. This second - generation *E. histolytica* II kit has demonstrated good sensitivities and specificities when compared to real-time PCR (71 to 79% and 96 to 100%, respectively) (Roy et al., 2005; Visser et al., 2006). Other studies however, have reported a lesser sensitivity (14.3%) and specificity (98.4%) in comparison to stool culture and isoenzyme analysis (Gatti et al., 2002). Cross reactivity is another concern with the use of the assay, since it seems that *E. dispar* positive samples by means of PCR may sometimes give false-positive outcomes (Furrows et al., 2004). Accordingly, accurate detection of *E. histolytica*, *E. dispar* and *E. moshkovskii* could be helpful for diagnostic and epidemiological studies in places where it is impractical and expensive to use molecular assays and where amoebiasis is most prevalent, such as in the developing countries. An antigen detection kit for the specific identification of *E. dispar* and *E. moshkovskii* is yet to be developed.

Several PCR-based techniques that amplify and detect *E. histolytica* DNA are currently used for the clinical and epidemiological studies in non-endemic rich countries (Acuna-Soto et al.,

1993; Katzwinkel-Wladarsch et al., 1994; Calderaro et al., 2006; Hamzah et al., 2006). The sensitivity and specificity of PCR-based methods for the diagnosis of *E. histolytica* infection approach those of stool culture followed by isoenzyme analysis. PCR methods can be used to detect *E. histolytica* in stool, tissues and liver lesion aspirates. Of all the different gene targets used to identify *E. histolytica*, the small-subunit rRNA gene (18SrDNA) is believed to be more sensitive than the best antigen detection method used and performs equally well compared to stool culture (Mirelman et al., 1997).

Several groups have developed a variety of excellent conventional PCR assays, targeting different genes, for the direct detection and differentiation of *E. histolytica*, *E. dispar*, and *E. moshkovskii* DNA in clinical specimens such as stool and liver abscess samples (Tanyuksel and Petri Jr., 2003; Paul et al., 2007). Of all the targeted genes, assays amplifying the 18SrDNA genes are the ones in wide use as they are present in multiple copies on extrachromosomal plasmids thus making them easily detectable than single copy genes (Battacharya et al., 1989). Other gene targets used in PCR to study the epidemiology of *E. histolytica* include: the serine-rich *E. histolytica* protein (SREPH) gene (Stanley et al., 1990), cysteine proteinases gene and actin genes (Freitas et al., 2004). The SREHP is also used to study the genotypes of *E. histolytica* in human populations. However, it is now being replaced by the use of PCR amplification of tRNA gene-linked short tandem repeats which in addition to providing details of the epidemiology of *E. histolytica*, it also provides a tool to predict the outcome of the infection (Ali et al., 2005).

A nested multiplex PCR was developed by many groups. This method has the added advantage of increasing the sensitivity and specificity of the test whilst simultaneously detecting and differentiating *E. histolytica* and *E. dispar* from DNA extracted from microscopy-positive stool specimens (Evangelopoulos et al., 2000; Hung et al., 2005; Nunez et al., 2001). A nested PCR method for the identification of *E. moshkovskii* in fecal samples was developed as a nested 18S rDNA PCR followed by restriction endonuclease digestion (Ali et al., 2003). The method exhibited a high sensitivity and specificity (100%).

Real time PCR is another type of PCR which is more sensitive than the conventional PCR. It is faster than the conventional PCR and characterized by the elimination of gel analysis and other post-PCR analysis, thus reducing the risk of contamination and cost (Klein 2002). However, its application in developing countries is limited to research only. Real-time PCR allows specific detection of the PCR product by binding to one or two fluorescence-labeled probes during PCR, thereby enabling continuous monitoring of the PCR product formation throughout the reaction. Furthermore, real-time PCR is a quantitative method and allows the determination of the number of parasites in various samples (Fotedar et al., 2007). Despite being used for the successful identification of *E. histolytica*, *E. dispar* and *E. moshkovskii*, the various PCR methods use is still confined to research institutes in the developing world where amoebiasis is endemic. PCR-based methods application in routine clinical diagnostic laboratories in low income societies is hindered by difficulties such as cost, and time to perform the test.

A new platform for the detection of pathogens has been developed known as loop-mediated isothermal amplification (LAMP) and was developed in 2000 by Notomi and colleagues. This method uses a set of two specifically designed inner primers and two outer primers that recognize six distinct regions of the targeted DNA. The reaction is performed under isothermal conditions and simple incubators, such as a water bath or heat block, are



adequate for the specific amplification of the desired genetic material. Considering these advantages, the LAMP assay could be a useful and valuable diagnostic tool particularly in developing countries where most of the infections are common as well as in hospital laboratories. Recently this method was developed specifically for the detection of *E. histolytica* (Liang et al., 2009). The efficiency of the developed method was compared to that of existing PCR methodology and was similar in terms of sensitivity and specificity. This method needs further evaluations to be used in local conditions in Africa in order to improve the understanding of amoebiasis in the continent as well as elsewhere.

## 5. Pathogenicity of amoebiasis

*E. histolytica* causes intestinal and extraintestinal amoebiasis based on the site of infection. Though most infections do not harm the host (asymptomatic infections), establishment in the colonic mucosa via the Galactose/N-acetyl Galactosamine inhibitable lectin (Gal-lectin) is a pre-requisite for the disease (Chadee et al., 1987). Pathogenic forms of the parasite are known to secrete enzymes that facilitate their invasion into the mucosa and sub-mucosa causing deep-flask shaped ulcers (Figure 3), and in some cases entering the circulation and reaching internal organs like the liver, lungs, skin, etc. The disease in the colon is the most common with acute diarrhoea and dysentery accounting for 90% of the clinical amoebiasis cases (Espinosa-Cantellano and Martínez-Palomo, 2000) and only 1% involve the liver (Haque et al., 2003) (Figure 4).

### 5.1 Asymptomatic colonization

Asymptomatic infections are characterized by the parasite living in perfect harmony within the host. *E. histolytica* trophozoites have developed elusive tactics to prevent them from being purged from the host. By modulating signals by intestinal epithelial cells (IEC), trophozoites direct anti-inflammatory host responses leading to a tolerogenic/hypo-responsive immune state favourable to their survival (Kammanadiminti and Chadee, 2006). Furthermore, products secreted by non-pathogenic *E. histolytica* strains normally disrupt and suppress NF $\kappa$ B signaling and as a result diminish pro-inflammatory responses normally detrimental to the parasite (Artis, 2008). Interleukin 10 (IL-10), an anti-inflammatory cytokine, has been shown to play a significant role in maintaining this hypo-responsive state. On the other hand, a deficiency of IL-10 more often than not predisposes the host to develop the clinical amoebiasis (Hamano et al., 2006).

### 5.2 Intestinal amoebiasis

After an incubation period of 1-4 weeks, the parasite invades the colonic mucosa, producing characteristic ulcerative lesions and a profuse bloody diarrhea (amoebic dysentery). Amoebic invasion through the mucosa and into the submucosa is the hallmark of amoebic colitis. Contact of the trophozoites via the Gal/GalNAc lectin triggers a signaling cascade initiating the death of the host cell through different mechanisms such as phagocytosis, cytotoxicity and caspase activation instigating the invasive (intestinal and/or extra-intestinal) stages of the disease. Other molecules involved in the disease process include: a serine-rich *E. histolytica* protein (SREHP), amoebapores, and cysteine proteases (Boettner et al., 2002; Mortimer and Chadee, 2010). Activation of damaging inflammatory and non-

inflammatory responses following contact of the trophozoites to the gut wall induces a massive neutrophil infiltration across the epithelium into the underlying tissues resulting in weakening of epithelial cells and the mucous layer and allowing trophozoites to invade the intestinal epithelium and disseminating to other bodily sites (Ackers and Mirelman, 2006). The ulcers formed may be generalized involving the whole length of the large intestine or they may be localized in the ileo-caecal or sigmoido-rectal regions. Ulcers are normally disconnected with sizes varying from pin-head size to more than 2.5 cm in diameter. They may be deep or superficial. Base of the deep ulcers is generally formed by the muscularis layer. Nonetheless, superficial ulcers do not extend beyond the muscularis layer. A large number of fatalities results from perforated colons with concomitant peritonitis. *E. histolytica* also causes amoebomas. These are pseudotumoural lesions, whose formation is associated with necrosis, inflammation and oedema of the mucosa and submucosa of the colon. These granulomatous masses may obstruct the bowel.

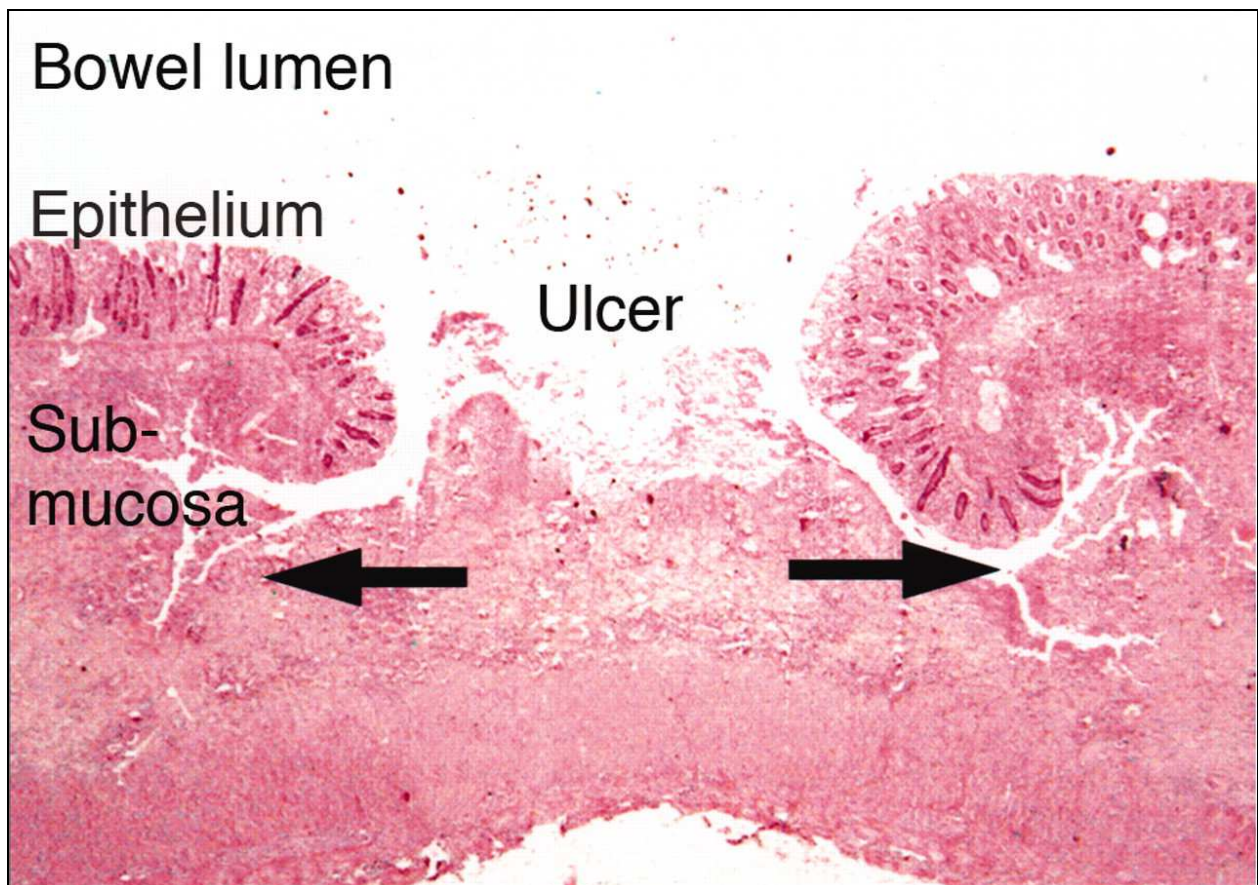


Fig. 3. "Flask-shaped" ulcer of invasive intestinal amoebiasis (hematoxylin-eosin, original magnification  $\times 50$ ). Source: Pritt B S , Clark C G Mayo Clin Proc. 2008;83:1154-1160: Mayo Clinic Proceedings

While the serine rich *E. histolytica* protein (SREHP) have been shown to promote adhesion of the trophozoites to host cells, cysteine proteases (CP), are known for their virulence in other protozoa as well as in tumour metastasis. Five *E. histolytica* proteins (EhCP1, 2, 3, 5 and 112) have been identified. All are alleged to play a role in the destruction of host cells, phagocytosis, together with the recruitment of neutrophils and macrophages and the induction of intestinal

inflammation (Mortimer and Chadee, 2010). Moreover, EhCP5 has also been shown to perform a variety of functions such as evasion of the host complement and immune system by preventing the activation of the classical complement system via the inactivation of IgG and the degradation of IgA (Laughlin and Temesvari, 2005).

Equally important in the pathogenesis and virulence of *E. histolytica* is the role of the phagosome-associated proteins. Many have been identified and their function in endocytosis and pathogenesis has been established. Examples include: EhRacA, EhRacG, EhPAK, actin and several Rab7-related GTPases (Laughlin and Temesvari, 2005). Cytokines such as IL-1 $\beta$ , IL-1 $\alpha$ , IL-8 and TNF- $\alpha$  are suspected of aggravating the disease process and driving the immunopathogenesis mechanism (Kammanadiminti et al., 2003). Although neutrophils are known to cause intestinal tissue damage they are nevertheless critical for controlling the infection. Nonetheless, host and/or parasite factors normally play a role in determining whether the parasite is cleared or the disease becomes established (Asgharpour et al., 2005).

Although most intestinal invasions heal following an acute inflammatory response, *E. histolytica* evades destruction in a modest number of individuals and a chronic state is established. This chronic state is associated with the development of a non-protective adaptive immune response. Human data, in vitro and in vivo models support a paradigm that Th1 responses in the gut clear *E. histolytica*, while Th2 responses through the production of IL-4 are anti-protective, likely through suppressing IFN- $\gamma$ . It is not yet clear what signals drive an anti-protective Th2 immune response instead of an effective protective Th1 response towards the infection. Evidence suggesting that genetics, the MHC restriction, nutrition and bacterial flora might play a role in directing the immune response towards *E. histolytica* infection exists. For example, the MHC class II allele DQB1\*0601 was reported to be associated with resistance to *E. histolytica* (Mortimer and Chadee, 2010). Susceptibility to ALA has been found to be associated with HLA-DR3 and complotype SC01 in some Mexican populations; this association is not seen for amoebic colitis or asymptomatic colonization with *E. histolytica* (Stanley, 2003).

### 5.3 Extraintestinal amoebiasis

About 5% individuals with intestinal amoebiasis, 1-3 months after the disappearance of the dysenteric attack, develop extraintestinal amoebiasis. Once in the blood, the parasite uses many different strategies to avoid elimination by the host and reaches other sites in the body (such as the liver, lungs, brain, etc). The most common extraintestinal site affected by the parasite is the liver and an Amoebic liver abscess (ALA) is its most common manifestation, predominantly seen in adult males. This chronic stage of ALA is characterized by defective cell-mediated immunity and the suppression of T cells and their defective proliferative responses (Campbell et al., 1999). *E. histolytica* trophozoites reaching the liver create their unique abscesses, which are well circumscribed regions of cytolysed liver cells, liquefied cells, and cellular debris. The lesions are surrounded by connective tissue enclosing few inflammatory cells and trophozoites. Parenchymal cells adjacent to the lesion are often unaffected. However, lysis of neutrophils by *E. histolytica* trophozoites might release mediators that lead to the death of liver cells, and extend damage to hepatocytes not in direct contact with the parasite. Studies have shown that in ALA in mice, most hepatocytes die from apoptosis, but necrosis is also present. In ALA from humans, the small numbers of amoebas relative to the size of the abscess suggests that *E. histolytica* can kill hepatocytes



without direct contact (Stanley 2003). From the liver, *E. histolytica* trophozoites may enter into the general circulation and reach other organs (Figure 4).



Fig. 4. Amoebic Liver abscess. Gross specimen of liver tissue with an abscess (white) that formed due to infection of the organ with *Entamoeba histolytica*. Source: <http://www.sciencephoto.com/media/250248/enlarge>

## 6. Role of genetic characteristics of the infecting strains in the pathogenesis of amoebiasis

The outcome of an infection may depend on several factors among which the genetic characteristics of the specific pathogen have been identified as an important one. Few polymorphic genetic loci have been identified and targeted to aid in the study of the population structure of *E. histolytica* strains and their possible relationships with the parasite's virulence and disease outcome (Clark, 2006; Paul et al., 2007). Examples of these genetic markers include protein coding genes (serine - rich *E. histolytica* protein, [SREHP] and Chitinase) and non-coding DNA (Strain Specific Gene and tRNA gene linked short tandem repeats [STR]) of PCR-amplified genes (Haghighi et al., 2003; Samie et al., 2008). In a study in Bangladesh, the tRNA-linked STR genotyping system has provided evidence that the parasite genome does influence the outcome of infection. tRNA-linked STR genotyping was also behind the recent observation of differences between parasite genotypes in the intestine and the liver abscess of same patients (Ali et al., 2007). Few studies, albeit inconclusive, using the polymorphic SREHP marker have indicated that certain SREHP profiles might be responsible for the presentation of intestinal amoebic symptoms (Ayehkumi et al., 2001; Samie et al., 2008). Yet, all studies with SREHP marker did support previous findings of extensive genetic diversity among *E. histolytica* isolates from the same



geographic origin (Ayeh-kumi et al., 2001; Simonishvili et al., 2005; Samie et al., 2008; Tanyuksel et al., 2008). Thus, it seems that the parasite genotype does play a role in the outcome of infection in humans thus linking parasite diversity and virulence. Other approaches, such as SNP identification coupled with microarray-based analysis of gene expression or proteomic comparisons among parasites will be needed to identify the actual genes responsible for these results and to help us understand the mechanism of parasite virulence and pathogenesis (Ali et al., 2008).

## 7. Conclusions

Up to date, there are still large gaps in our knowledge of species prevalence rates in different regions of the world particularly in the African continent where very few studies are being conducted using molecular methods. In order to address this limitation, there is need to implement species-specific diagnosis of *E. histolytica*, *E. dispar* and *E. moshkovskii*, particularly in countries where these organisms are endemic. Based on the limited information available to date it appears that molecular and genomic studies are still needed combined to molecular epidemiology studies in order to advance our understanding of amoebiasis. The currently available genome sequence is very useful in better understanding the biology of the parasite, however, *E. histolytica* strains from Africa still need to have the genome sequenced. Comparative genomics will probably allow the understanding of the pathogenicity of some strains of *E. histolytica* compared to non-pathogenic strains as well as better understanding of *E. dispar* in relation to *E. histolytica*. Further collaborations between scientists from developed countries and those from developing countries is essential in answering questions on the epidemiology, pathogenesis and biochemistry of *E. histolytica* which is the causing agent of amoebiasis.

## 8. References

- Abd-Alla MD, and Ravdin JI (2002). Diagnosis of amebic colitis by antigen capture ELISA in patients presenting with acute amebic diarrhea in Cairo Egypt. *Trop Med Int Health* 7: 365--370.
- Abd-Alla MD, Jackson TG and Ravdin JI (1998). Serum IgM antibody response to the galactose-inhibitable adherence lectin of *Entamoeba histolytica*. *Am J Trop Med Hyg* 59: 431-434.
- Ackers JP (2000). The diagnostic implications of the separation of *Entamoeba histolytica* and *Entamoeba dispar*. *J Biosci* 27: 573-578.
- Acuna-Soto R, Samuelson J, De Girolami P, Zarate L, Millan-Velasco F, Schoolnick G, Wirth D (1993) Application of the polymerase chain reaction to the epidemiology of pathogenic and nonpathogenic *Entamoeba histolytica*. *Am J Trop Med Hyg* 48: 58-70.
- Ali IKM, Hossain MB, Roy S, Ayeh-Kumi PF, Petri WA, Jr, Haque R, Clark CG (2003). *Entamoeba moshkovskii* infections in children, Bangladesh. *Emerg Infect Dis* 9:580-584.
- Ali IKM, Mondal U, Roy S, Haque R, Petri WA, Jr, Clark CG (2007). Evidence for a link between parasite genotype and outcome of infection with *Entamoeba histolytica*. *J Clin Microbiol* 45: 285-289.

- Ali IK, Zaki M and Clark CG (2005). Use of PCR amplification of tRNA gene-linked short tandem repeats for genotyping *Entamoeba histolytica*. J Clin Microbiol 43: 5842-5847.
- Ali IK, Clark CG, Petri Jr. WA (2008). Molecular epidemiology of amoebiasis. Infect Genet Evol 8: 698-707.
- Ali IK, Mondal U, Roy S, Haque R, Petri Jr. WA, Clark CG (2007). Evidence for a link between parasite genotype and outcome of infection with *Entamoeba histolytica*. J Clin Microbiol 45: 285-289.
- Ali IK, Solaymani-Mohammadi S, Akhter J, Roy S, Gorrini C, Calderaro A, Parker SK, Haque R, Petri Jr. WA, Clark CG (2008). Tissue invasion by *Entamoeba histolytica*: evidence of genetic selection and/or DNA reorganization events in organ tropism. PLoS Negl Trop Dis 2: e219.
- Alonzo E, Alonzo V, Forino D, Ioli A (1993). Parasitological research conducted between 1982 and 1991 in a sample of Zinvie (Benin) residents. Med Trop 53(3):331-335.
- Artis D (2008). Epithelial-cell recognition of commensal bacteria and maintenance of immune homeostasis in the gut. Nat Rev Immunol 8:411-420.
- Asgharpour A, Gilchrist C, Baba D, Hamano S, Houpt E (2005). Resistance to intestinal *Entamoeba histolytica* infection is conferred by innate immunity and Gr-1+ Cells. Infect Immun 73: 4522-4529.
- Ayeh-Kumi PF, Ali IM, Lockhart LA, Gilchrist CA, Petri Jr, WA, Haque R (2001). *Entamoeba histolytica*: genetic diversity of clinical isolates from Bangladesh as demonstrated by polymorphisms in the serine-rich gene. Exp Parasitol 99(2):80-88.
- Bachur TP, Vale JM, Coêlho IC, Queiroz TR, Chaves Cde S (2008). Enteric parasitic infections in HIV/AIDS patients before and after the highly active antiretroviral therapy. Braz J Infect Dis. 12(2):115-122.
- Bardwell L (2006) Mechanisms of MAPK signalling specificity. Biochem Soc Trans 34: 837-841.
- Bhattacharya S, Bhattacharya A, Diamond LS and Soldo AT (1989). Circular DNA of *Entamoeba histolytica* encodes ribosomal RNA. J Protozool 36:455-458.
- Blessman J, Le Van A, and Tannich E (2006). Epidemiology and treatment of amoebiasis in Hue, Vietnam. Arch Med Res 37: 270-272.
- Blessmann J, Ali IKM, Nu PA, Dinh BT, Viet TQ, Van AL, Clark CG, Tannich E (2003). Longitudinal study of intestinal *Entamoeba histolytica* infections in asymptomatic adult carriers. J Clin Microbiol. 41:4745-50.
- Blessmann J, Buss H, Nu PA, Dinh BT, Ngo QT, Van AL, Alla MD, Jackson TF, Ravdin JL, and Tannich E (2002). Real-time PCR for detection and differentiation of *Entamoeba histolytica* and *Entamoeba dispar* in fecal samples. J Clin Microbiol 40:4413-4417.
- Blessmann J, Van Linh P, Nu PA, Thi HD, Muller-Myhsok B, Buss H, and Tannich E (2002). Epidemiology of amebiasis in a region of high incidence of amebic liver abscess in central Vietnam. Am J Trop Med Hyg 66:578-583.
- Boettner DR, Hutson C, Petri Jr. WA (2002). Galactose/N-acetylgalactosamine lectin: the coordinator of host cell killing. J Bio 6(Suppl.3):553-557.

- Brink AK, Mahe C, Watera C, Lugada E, Gilks C, Whitworth J, and French N (2002). Diarrhoea, CD4 counts and enteric infections in a community-based cohort of HIV-infected adults in Uganda. *J Infect* 45:99-106.
- Burch DJ, Li E, Reed S, Jackson TF, Stanley SL Jr (1991). Isolation of strain-specific *Entamoeba histolytica* cDNA clone. *J Clin Microbiol* 29(4):696-701.
- Caballero-Salcedo A, Viveros-RogelM, Salvatierra B, Tapia-Conyer R, Sepulveda-Amor J, Gutierrez G, and Ortiz-Ortiz L (1994). Seroepidemiology of amebiasis in Mexico. *Am J Trop Med Hyg* 50:412-419.
- Calderaro A, Gorrini C, Bommezzadri S, Piccolo G, Dettori G, and Chezzi C (2006). *Entamoeba histolytica* and *Entamoeba dispar*: comparison of two PCR assays for diagnosis in a non-endemic setting. *Trans R Soc Trop Med Hyg* 100:450-457.
- Campbell D, Gaucher D, Chadee K (1999). Serum from *Entamoeba histolytica*-infected gerbils selectively suppresses T cell proliferation by inhibiting Interleukin-2 production. *J Infect Dis* 179:1495-1501.
- Cardona AF, Cambariza JF, Reveiz L, Ospina EG, Poveda CM, Ruiz CA, Ramos P, Aponte DM (2004). Características clínicas y microbiológicas de la colitis neutropénica en adultos con neoplasias hematológicas del Instituto Nacional de Cancerología de Bogotá, D.C. (Colombia). *Enferm Infecc Microbiol Clin* 22: 462-466.
- Chadee K, Petri WA Jr, Innes DJ, Ravdin JI (1987). Rat and human colonic mucins bind to and inhibit adherence lectin of *Entamoeba histolytica*. *J Clin Invest* 80(5):1245-54.
- Chatterjee A, Ghosh SK, Jang K, Bullitt E, Moore L, Robbins PW and Samuelson J (2009). Evidence for a “wattle and daub” model of the cyst wall of *Entamoeba*. *PLoS Pathogens* 5 : e1000498.
- Chen Y, Zhang Y, Yang B, Qi T, Lu H, Cheng X, and Tachibana H (2007). Seroprevalence of *Entamoeba histolytica* infection in HIV-infected patients in China. *Am J Trop Med Hyg* 77: 825-828.
- Clark CG and Diamond LS (2002). Methods for the cultivation of luminal parasitic protists of clinical importance. *Clin Microbiol Rev* 15:329-341.
- Clark CG (2006). Methods for the investigation of diversity in *Entamoeba histolytica*. *Arch Med Res* 37(2):258-262.
- Daryani A, Sharif M, Meigouni M, Mahmoudi FB, Rafiei A, Gholami Sh, Khalilian A, Gohardehi Sh, Mirabi AM (2009). Prevalence of intestinal parasites and profile of CD4+ counts in HIV+/AIDS people in north of Iran. *Pak J Biol Sci.* 12(18):1277-1281.
- Diamond LS, Clark CG (1993). A redescription of *Entamoeba histolytica* Schaudinn, 1903 (Emended Walker, 1911) separating it from *Entamoeba dispar* Brumpt, 1925. *J Eukaryot Microbiol* 40:340-344.
- Dorin-Semblat D, Quashie N, Halbert J, Sicard A, Doerig C, Peat E, Ranford-Cartwright L, Doerig C (2007) Functional characterization of both MAP kinases of the human malaria parasite *Plasmodium falciparum* by reverse genetics. *Mol Microbiol* 65: 1170-1180.
- Eichinger D (2001). A role for a galactose lectin and its ligands during encystment of *Entamoeba*. *J Eukaryot Microbiol* 48: 17-21.

- Ellis JG, Davila M, Chakrabarti R (2003). Potential involvement of extracellular signal-regulated kinase 1 and 2 in encystation of a primitive eukaryote, *Giardia lamblia*. Stage-specific activation and intracellular localization. *J Biol Chem* 278: 1936–1945.
- Escobedo AA and Nunez FA (1999). Prevalence of intestinal parasites in Cuban acquired immunodeficiency syndrome (AIDS) patients. *Acta Trop* 72:125-130.
- Espinosa-Cantellano M, Martínez-Palomo A (2000). Pathogenesis of Intestinal Amebiasis: From Molecules to Disease. *Clin Microbiol Rev* 13(2): 318-331.
- Evangelopoulos A, Spanakos G, Patsoula E and Vakalis N (2000). A nested, multiplex, PCR assay for the simultaneous detection and differentiation of *Entamoeba histolytica* and *Entamoeba dispar* in faeces. *Ann. Trop. Med. Parasitol.* 94:233-240.
- Evangelopoulos A, Spanakos G, Patsoula E, Vakalis N, and Legakis NA (2000). A nested, multiplex, PCR assay for the simultaneous detection and differentiation of *Entamoeba histolytica* and *Entamoeba dispar* in faeces. *Ann Trop Med Parasitol* 94:233-240.
- Florez AC, Garcia DA, Moncada L, Beltran M (2003). Prevalence of Microsporidia and other intestinal parasites in patients with HIV infection, Bogota, 2001. *Biomedica* 23(3):274-82.
- Fotedar R, Stark D, Beebe N, Marriott D, Ellis J, Harkness J (2007). Laboratory diagnostic techniques for *Entamoeba* species. *Clin Microbiol Rev.* 20(3):511-32.
- Fotedar R, Stark D, Marriott D, Ellis J, Harkness J (2008). *Entamoeba moshkovskii* infections in Sydney, Australia. *Eur J Clin Microbiol Infect Dis.* 27:133–7.
- Freitas MA, Vianna EN, Martins ES, Silva EF, Pesquero JL and Gomes MA (2004). A single step duplex PCR to distinguish *Entamoeba histolytica* from *Entamoeba dispar*. *Parasitology* 128:625-628.
- Fujishima T, Nishise S, Ichihara M, Kobayashi S, Takeuchi T (2010). Difficulties in the treatment of intestinal amoebiasis in mentally disabled individuals at a rehabilitation institution for the intellectually impaired in Japan. *Chemotherapy.* 56(4):348-52.
- Furrows SJ, Moody AH and Chiodini PL (2004). Comparison of PCR and antigen detection methods for diagnosis of *Entamoeba histolytica* infection. *J Clin Pathol* 57:264-266.
- Gassama A, Sow PS, Fall F, Camara P, Gueye-N'diaye A, Seng R, Samb B, M'Boup S, Aidara-Kane A (2001). Ordinary and opportunistic enteropathogens associated with diarrhea in Senegalese adults in relation to human immunodeficiency virus serostatus. *Int J Infect Dis* 5(4):192-8.
- Gathiram V, Jackson TFHG (1987). A longitudinal study of asymptomatic carriers of pathogenic zymodemes of *Entamoeba histolytica*. *S Afr Med J* 72:669–72.
- Gatti S, Swierczynski G, Robinson F, Anselmi M, Corrales J, Moreira J, Montalvo G, Bruno A, Maserati R, Bisoffi Z, and Scaglia M (2002). Amebic infections due to the *Entamoeba histolytica*-*Entamoeba dispar* complex: a study of the incidence in a remote rural area of Ecuador. *Am J Trop Med Hyg* 67:123-127.
- Ghosh S, Frisardi m, Rminez-Avila L, Descoteaux S, sturm-Ramirez K, Newton-Sanchez OC, Santos-precado JI, Ganguly C, Lohia A, Reed S, and Samuelson J (2000). Molecular



- epidemiology of *Entamoeba* spp.: Evidence of a bottleneck (Demographic Sweep) and Transcontinental Spread of Diploid Parasites. *J Clin Microbiol* 38(10) : 3815-3821.
- Goncalves ML, da Silva VL, de Andrade CM, Reinhard K, da Rocha GC, Le Bailly M, Bouchet F, Ferreira LF, and Araujo A (2004). Amoebiasis distribution in the past: first steps using an immunoassay technique. *Trans R Soc Trop Med Hyg* 98:88-91.
- González-Ruiz A, Haque R, Aguirre A, Castañón G, Hall A, Guhl F, Ruiz-Palacios G, Miles MA, Warhurst DC (1994). Value of microscopy in the diagnosis of dysentery associated with invasive *Entamoeba histolytica*. *J Clin Pathol* 47: 236-239.
- Haghighi A, Kobayashi S, Takeuchi T, Thammapalerd N, Nozaki T (2003). Geographic diversity among genotypes of *Entamoeba histolytica* field isolates. *J Clin Microbiol* 41(8): 3748-56.
- Haileyesus A and Beyene P (2009). Intestinal protozoan infections among HIV positive persons with and without antiretroviral treatment (ART) in selected ART centres in Adama, Afar and Dire-Dawa, Ethiopia. *Ethiop. J Health Dev* 23(2): 133-140.
- Hailemariam G, Kassu A, Abebe G, Abate E, Damte D, Mekonnen E and Ota F (2004). Intestinal parasitic infections in HIV/AIDS and HIV seronegative individuals in a teaching hospital, Ethiopia. *Jpn J Infect Dis* 57:41-43.
- Hamano S, Asgharpour A, Stroup SE, Wynn TA, Leiter EH, Houghton E (2006). Resistance of C57BL/6 mice to amoebiasis is mediated by nonhemopoietic cells but requires hemopoietic IL-10 production. *J Immunol* 177: 1208-1213.
- Hamzah Z, Petmitr S, Mungthin M, Leelayoova S and Chavalitsheewinkoon-Petmitr P (2006). Differential detection of *Entamoeba histolytica*, *Entamoeba dispar*, and *Entamoeba moshkovskii* by a single-round PCR assay. *J Clin Microbiol* 44:3196-3200.
- Haque R, Mondal D, Duggal P, Kabir M, Roy S, Farr BM, Sack RB, Petri WA., Jr (2006). *Entamoeba histolytica* infection in children and protection from subsequent amebiasis. *Infect Immun* 74:904-9.
- Haque R, Mondal D, Duggal P, Kabir M, Roy S, Farr BM, Sack RB, Petri WA Jr (2006). *Entamoeba histolytica* Infection in Children and Protection from Subsequent Amebiasis. *Infect Immunity* 74 (2): 904-909.
- Haque R, Mondal D, Karim A, Molla IH, Rahim A, Faruque AS, Ahmad N, Kirkpatrick BD, Houghton E, Snider C, Petri WA Jr (2009). Prospective case-control study of the association between common enteric protozoal parasites and diarrhea in Bangladesh. *Clin Infect Dis* 48(9):1191-7.
- Haque R, Mondal D, Duggal P, Kabir M, Roy S, Farr BM, Sack RB, Petri WA Jr (2006). *Entamoeba histolytica* infection in children and protection from subsequent amebiasis. *Infect Immun.* 74(2):904-9.
- Haque R, Hutson CD, Hughes M, Houghton E, Petri Jr WA (2003). Amoebiasis. *N Engl J Med* 348: 1565-1573.

- Haque R, Ali IKM, and Petri, Jr WA (1999). Prevalence and immune response of *Entamoeba histolytica* infection in preschool children in Bangladesh. *Am J Trop Med Hyg* 60:1031-1034.
- Haque R, Kress K, Wood S, Jackson TFGH, Lyerly D, Wilkins T, and Petri, Jr.WA (1993). Diagnosis of pathogenic *Entamoeba histolytica* infection using a stool ELISA based on monoclonal antibodies to the galactose specific adhesin. *J Infect Dis* 167:247-249.
- Haque R, Mollah NU, Ali IKM, Alam K, Eubank A, Lyerly D, and Petri Jr.WA (2000). Diagnosis of amebic liver abscess and intestinal infection with the TechLab *Entamoeba histolytica* II antigen detection and antibody tests. *J Clin Microbiol* 38:3235-3239.
- Hira PR, Iqbal J, Al-Ali F, Philip R, Grover S, D'Almeida E and Al-Eneizi AA (2001). Invasive amoebiasis: challenges in diagnosis in a non-endemic country (Kuwait). *Am J Trop Med Hyg* 65:341-345.
- Hung CC, Ji DD, Sun HY, Lee YT, Hsu SY, Chang SY, Wu CH, Chan YH, Hsiao CF, Liu WC, Colebunders R (2008). Increased risk for *Entamoeba histolytica* infection and invasive amoebiasis in HIV seropositive men who have sex with men in Taiwan. *PLoS Negl Trop Dis* 2(2):e175.
- Hung CC, Ji DD, Sun HY, Lee YT, Hsu SY, Ya TL, Shui YH, Sui YC, Cheng HW, Yun HC, Chin FH, Wen CL, Robert C (2008). Increased risk for *Entamoeba histolytica* infection and invasive amoebiasis in HIV seropositive men who have sex with men in Taiwan. *PLOS Negl Trop Dis* 2(2):e175.
- Hung CC, Deng HI, Hsiao WH, Hsieh SM, Hsiao CF, Chen MY, Chang SC and Su KE (2005). Invasive amoebiasis is an emerging parasitic infection in patients with HIV infection. *Archives of Internal Medicine*, 165: 409-415.
- Jackson TF, Gathiram V, Simjee AE (1985). Seroepidemiological study of antibody responses to the zymodemes of *Entamoeba histolytica*. *Lancet*. 1(8431):716-9.
- Junttila MR, Li SP, Westermarck J (2008). Phosphatase-mediated crosstalk between MAPK signaling pathways in the regulation of cell survival. *Faseb J* 22: 954-965.
- Kammanadiminti SJ, Mann BJ, Dutil L, Chadee K (2003). Regulation of toll-like receptor-2 expression by the Gal-lectin of *Entamoeba histolytica*. *The FASEB* 8: 155-7.
- Kammanadiminti SJ, Chadee K (2006). Suppression of NF- $\kappa$ B Activation by *Entamoeba histolytica* in intestinal epithelial cells is mediated by heat shock protein 27. *J Biol Chem* 281:26112-26120.
- Katzwinkel-Wladarsch S, Loscher T and Rinder H (1994). Direct amplification and differentiation of pathogenic and nonpathogenic *Entamoeba histolytica* DNA from stool specimens. *Am J Trop Med Hyg* 51: 115-118.
- Khairnar K, Parija SC, Palaniappan R (2007). Diagnosis of intestinal amoebiasis by using nested polymerase chain reaction-restriction fragment length polymorphism assay. *J Gastroenterol* 42:631-640.
- Klein D (2002). Quantification using real-time PCR technology: applications and limitations. *Trends Mol Med* 8:257-260.
- Knappik M, Borner U, and Jelinek T (2005). Sensitivity and specificity of a new commercial enzyme-linked immunoassay kit for detecting *Entamoeba*

- histolytica IgG antibodies in serum samples. *Eur J Clin Microbiol Infect Dis* 24:701-703.
- Krogstad DJ, Spencer HC Jr, Healy GR, Gleason NN, Sexton DJ, Herron CA (1978) Amoebiasis: epidemiologic studies in the United States, 1971-1974. *Ann Intern Med* 88: 89-97.
- Kumiko Nakada-Tsukuia, Yumiko Saito-Nakanoa, Afzal Husaina and Tomoyoshi Nozaki T (2010). Conservation and function of Rab small GTPases in *Entamoeba*: Annotation of *E. invadens* Rab and its use for the understanding of *Entamoeba* biology. *Exp Parasitol* 126( 3): 337-347.
- Laughlin RC, Temesvari LA (2005). Cellular and molecular mechanisms that underlie *Entamoeba histolytica* pathogenesis: prospects for intervention. *Expert Reviews in Molecular Medicine* 7: 1-19.
- Lawson LL, Bailey JW, Beeching NJ, Gurgel RG and Cuevas LE (2004). The stool examination reports amoeba cysts: should you treat in the face of over diagnosis and lack of specificity of light microscopy? *Trop Doctor* 34(1):28-30
- Liang SY, Chan YH, Hsia KT, Lee JL, Kuo MC, Hwa KY, Chan CW, Chiang TY, Chen JS, Wu FT, Ji DD (2009). Development of loop-mediated isothermal amplification assay for detection of *Entamoeba histolytica*. *J Clin Microbiol* 47(6):1892-5.
- Lindo JF, Dubon JM, Ager AL, De Gourville EM, Solo-Gabriele H, Klaskala WI, Baum VK, and Palmer CJ (1998). Intestinal parasitic infections in human immunodeficiency virus (HIV)-positive and HIV-negative individuals in San Pedro Sula, Honduras. *Am J Trop Med Hyg* 58:431-435.
- Matthys B, Bobieva M, Karimova G, Mengliboeva Z, Jean-Richard V, Hoimnazarova M, Kurbonova M, Lohourignon LK, Utzinger J, Wyss K (2011). Prevalence and risk factors of helminths and intestinal protozoa infections among children from primary schools in western Tajikistan. *Parasit Vectors* 4(1):195.
- McGugan Jr GC and Temesvari LA (2003). Characterization of a Rab11-like GTPase, EhRab11, of *Entamoeba histolytica*. *Mol Biochem Parasitol* 129 : 137-146.
- McLaughlin J, and Aley S (1985). The biochemistry and functional morphology of the *Entamoeba*. *J Protozool* 32:221-240.
- Mirelman D, Nuchamowitz Y, and Stolarsky T (1997). Comparison of use of enzyme-linked immunosorbent assay-based kits and PCR amplification of rRNA genes for simultaneous detection of *Entamoeba histolytica* and *E. dispar*. *J Clin Microbiol* 35:2405-2407.
- Mitra BN, Saito-Nakano Y, Nakada-Tsukui K, Sato D and Nozaki T (2007). Rab11B small GTPase regulates secretion of cysteine proteases in the enteric protozoan parasite *Entamoeba histolytica*, *Cell Microbiol* 9 :2112-2125.
- Molbak K, Wested N, Hojlyng N, Scheutz F, Gottschau A, Aaby P, da Silva AP (1994). The etiology of early childhood diarrhea : a community study from Guinea-Bissau. *J Infect Dis* 169 (3) :581-7.
- Morales MA, Renaud O, Faigle W, Shorte SL, Spath GF (2007). Over-expression of *Leishmania major* MAP kinases reveals stage-specific induction of phosphotransferase activity. *Int J Parasitol* 37: 1187-1199.

- Moran P, Ramos F, Ramiro M, Curiel O, González E, Valadez A, Gómez A, García G, Melendro EI, Ximénez C (2005). *Entamoeba histolytica* and/or *Entamoeba dispar*: infection frequency in HIV+/AIDS patients in Mexico City. *Exp Parasitol* 110(3):331-4.
- Moran P, Ramos F, Ramiro M, Curiel O, Gonzalez E, Valadez A, Gomez A, Garcia G, Melendro EI and Ximenez C (2005). Infection by human immunodeficiency virus-1 is not a risk factor for amoebiasis. *American Journal of Tropical Medicine and Hygiene*, 73: 296-300.
- Mortimer L, Chadee K (2010). The immunopathogenesis of *Entamoeba histolytica*. *Exp Parasitol* 126(3):336-80.
- Mortimer L, Chadee K (2010). The immunopathogenesis of *Entamoeba histolytica*. *Exp Parasitol* 126 (3): 366-80.
- Mukherjee AK, Das K, Bhattacharya MK, Nozaki T, Ganguly S (2010). Trend of *Entamoeba histolytica* infestation in Kolkata. *Gut Pathog.* 2(1):12.
- Nishise S, Fujishima T, Kobayashi S, Otani K, Nishise Y, Takeda H, Kawata S (2010). Mass infection with *Entamoeba histolytica* in a Japanese institution for individuals with mental retardation: epidemiology and control measures. *Ann Trop Med Parasitol.* 104(5):383-90.
- Njoya O, Njitoyap Ndam EC, Ngoue V, Ngonde Sendé C (1999). Amoebic liver abscesses in Yaounde. *Cahiers sante.* 9(2):119-22.
- Notomi T, Okayama H, Masubuchi H, Yonekawa T, Watanabe K, Amino N and Hase (2000). Loop-mediated isothermal amplification of DNA. *Nucleic Acids Res.* 28E63.
- Novick and M. Zerial (1997). The diversity of Rab proteins in vesicle transport, *Current Opinion in Cell Biology* 9 (1997), pp. 496-504.
- Nozaki and Nakada-Tsukui (2006). Nozaki T and Nakada-Tsukui K (2006). Membrane trafficking as a virulence mechanism of the enteric protozoan parasite *Entamoeba histolytica*, *Parasitology Research* 98: 179-183.
- Nunez YO, Fernandez MA, Torres-Nunez D, Silva JA, Montano I, Maestre JL, and Fonte L (2001). Multiplex polymerase chain reaction amplification and differentiation of *Entamoeba histolytica* and *Entamoeba dispar* DNA from stool samples. *Am J Trop Med Hyg* 64:293-297.
- Ohnishi K, and Murata M (1997). Present characteristics of symptomatic amebiasis due to *Entamoeba histolytica* in the east-southeast area of Tokyo. *Epidemiol. Infect.* 119:363-367.
- Parija SC, Khairnar K (2005). *Entamoeba moshkovskii* and *Entamoeba dispar*-associated infections in Pondicherry, India. *J Health Popul Nutr* 23:292-295.
- Paul J, Srivastava S, Bhattacharya S (2007). Molecular methods for diagnosis of *Entamoeba histolytica* in a clinical setting: An overview. *Exp Parasitol* 116: 35-43.
- Pham Duc P, Nguyen-Viet H, Hattendorf J, Zinsstag J, Dac Cam P, Odermatt P (2011). Risk factors for *Entamoeba histolytica* infection in an agricultural community in Hanam province, Vietnam. *Parasit Vectors.* 4:102.



- Picazarri K, Nakada-Tsukui K and Nozaki T (2008). Autophagy during proliferation and encystation in the protozoan parasite *Entamoeba invadens*, *Infect Immun* 76: 278–288.
- Pillai DR, Keystone JS, Sheppard DC, MacLean JD, MacPherson DW, and Kain KC (1999). *Entamoeba histolytica* and *Entamoeba dispar*: epidemiology and comparison of diagnostic methods in a setting of non endemicity. *Clin Infect Dis* 29:1315-1318.
- Pinheiro SM, Carneiro RM, Aca IS, Irmao JI, Morais MA Jr, Coimbra MR and Carvalho LB Jr (2004). Determination of the prevalence of *Entamoeba histolytica* and *E. dispar* in the pernambuco state of northeastern Brazil by a polymerase chain reaction. *Am J Trop Med Hyg* 70(2):221-4.
- Prasad KN, Nag VL, Dhole TN, and Ayyagari A (2000). Identification of enteric pathogens in HIV-positive patients with diarrhoea in northern India. *J Health Popul Nutr* 18:23-26.
- Ravdin JI, Stauffer WM (2005). *Entamoeba histolytica* (amoebiasis). In: Mandell GL, Bennett JE, Dolin R, eds. *Principles and Practice of Infectious Diseases*, vol. 2. Ed., Philadelphia: Churchill Livingstone; 2005: 3097-3111.
- Reyes P, Cortes JA, Potdevin G, Urdaneta AM, Rosales J, Cuervo SI, Bermudez D, Arroyo PA (2006). Infecciones en pacientes con trasplante de médula o sea en el tro'pico. *Infection* 10: 101.
- Rivero Z, Bracho A, Calchi M, Díaz I, Acurero E, Maldonado A, Chourio G, Arráiz N, Corzo G (2009). [Detection and differentiation of *Entamoeba histolytica* and *Entamoeba dispar* by polymerase chain reaction in a community in Zulia State, Venezuela]. *Cad Saude Publica*. 25(1):151-9.
- Robert R, Mahaza C, Bernard C, Buffard C, and Senet JM (1990). Evaluation of a new bicolored latex agglutination test for immunological diagnosis of hepatic amoebiasis. *J Clin Microbiol* 28:1422-1424.
- Roche J, Benito A (1999). Prevalence of intestinal parasite infections with special reference to *Entamoeba histolytica* on the island of Bioko (Equatorial Guinea). *Am J Trop Med Hyg* 60(2):257-62.
- Roy S, Kabir M, Mondal D, Ali IK, Petri Jr. WA and Haque R (2005). Real-time-PCR assay for diagnosis of *Entamoeba histolytica* infection. *Clin. Microbiol.* 43:2168-2172.
- Samie A, Barrett LJ, Bessong PO, Ramalivhana JN, Mavhandu LG, Njaye M, and Gurrant RL (2010). Seroprevalence of *Entamoeba histolytica* in the context of HIV and AIDS: the case of the Vhembe district, in South Africa's Limpopo province. *Ann Trop Med Parasitol* 104 (1): 55-63.
- Samie A, Obi CL, Bessong PO, Houpt E, Stroup S, Njaye M, Sabeta C, Mduluzza T, Guerrant RL (2008). *Entamoeba histolytica*: genetic diversity of African strains based on the polymorphism of the serine-rich protein gene. *Exp Parasitol* 118(3): 354-61.
- Sardar Ghosh A, Ray D, Dutta S, Raha S (2010). EhMAPK, the Mitogen-Activated Protein Kinase from *Entamoeba histolytica* Is Associated with Cell Survival. *PLoS ONE* 5(10): e13291. doi:10.1371/journal.pone.0013291.

- Simonishvili S, Tsanava S, Sanadze K, Chlikadze R, Miskalishvili A, Lomkatsi N, Imnadze P, Petri Jr.WA, Trapaidze N (2005). *Entamoeba histolytica*: the serine-rich gene polymorphism-based genetic variability of clinical isolates from Georgia. *Exp Parasitol* 110(3):313-7.
- Stanley SL Jr (2003). Amoebiasis. *Lancet*. 361(9362):1025-1034.
- Stanley S LJr., Becker A, Kunz-Jenkins C, Foster L and Li E (1990). Cloning and expression of a membrane antigen of *Entamoeba histolytica* possessing multiple tandem repeats. *Proc Natl Acad Sci USA* 87:4976-4980.
- Stanley SL (2003). Amoebiasis. *Lancet* 361, 1025-34.
- Stark D, Barratt JLN, van Hal S, Marriott D, Harkness J, and Ellis JT (2009). Clinical significance of enteric protozoa in the immunosuppressed human population. *Clin Microbiol Rev* 22(4): 634-650.
- Stark D, Fotedar R, van Hal S, Beebe N, Marriott D, Ellis TG and Harkness J (2007). Prevalence of enteric protozoa in human immunodeficiency virus (HIV)-positive and HIV-negative men who have sex with men from Sydney, Australia. *Am J Trop Med Hyg* 76:549-552.
- Stauffer W, Abd-Alla M and Ravdin JI (2006). Prevalence and incidence of *Entamoeba histolytica* in South Africa and Egypt. *Arch Med Res* 37: 266-269.
- Stenmark H (2009). Rab GTPases as coordinators of vesicle traffic, *Nature Reviews Molecular Cell Biology* 10:513-525.
- Strachan WD, Chiodini PL, Spice WM, Moody AH and Ackers JP (1988). Immunological differentiation of pathogenic and nonpathogenic isolates of *E. histolytica*. *Lancet* i:561-563.
- Tanyuksel M., Petri Jr.WA (2003). Laboratory diagnosis of amoebiasis. *Clin Microbiol Rev* 16: 713-729.
- Tanyuksel M, Ulukanligil M, Yilmaz H, Guclu Z, Araz RE, Mert G, Koru O, Petri Jr WA. (2008). Genetic variability of the serine-rich gene of the *Entamoeba histolytica* in clinical isolates from Turkey. *Turk J Med Scdi* 38(3): 239-244.
- Bachur TP, Vale JM, Coêlho IC, Queiroz TR, Chaves Cde S (2008). Enteric parasitic infections in HIV/AIDS patients before and after the highly active antiretroviral therapy. *Braz J Infect Dis* 12(2):115-122.
- Tsai JJ, Sun HY, Tsai KS, Chang SY, Hsieh SM, Hsiao CF, Yen JH, Hung CC, Chang SC (2006). Higher seroprevalence of *Entamoeba histolytica* infection is associated with human immunodeficiency virus type 1 infection in Taiwan. *Am J Trop Med Hyg* 74(6):1016-9.
- Visser LG, Verweij JJ, Van Esbroeck M, Edeling WM, Clerinx J, Polderman AM (2006). Diagnostic methods for differentiation of *Entamoeba histolytica* and *Entamoeba dispar* in carriers: performance and clinical implications in a non-endemic setting. *Int J Med Microbiol* 296:397-403.
- WHO (1997). "WHO/PAHO/UNESCO report. A consultation with experts on amoebiasis. Mexico City, Mexico 28-29 January 1997. *Epidemiological Bulletin* 18 (1): 13-14.
- Ximénez C, Morán P, Rojas L, Valadez A, Gómez A, Ramiro M, Cerritos R, González E, Hernández E, and Oswaldo P (2011). Novelties on Amoebiasis: A Neglected Tropical Disease. *J Glob Infect Dis* 3(2): 166-174.

- Ximénez C, Morán P, Rojas L, Valadez A, Gómez A (2009). Reassessment of the epidemiology of amebiasis: state of the art. *Infect Genet Evol* 9(6):1023-32.
- Zengzhu G, Bracha R, Nuchamowitz Y, Cheng W and Mirelman D (1999). Analysis by enzyme-linked immunosorbent assay and PCR of human liver abscess aspirates from patients in China for *Entamoeba histolytica*. *J Clin Microbiol* 37:3034-3036.

IntechOpen

IntechOpen



### **Current Topics in Tropical Medicine**

Edited by Dr. Alfonso Rodriguez-Morales

ISBN 978-953-51-0274-8

Hard cover, 564 pages

**Publisher** InTech

**Published online** 16, March, 2012

**Published in print edition** March, 2012

Tropical Medicine has emerged and remained as an important discipline for the study of diseases endemic in the tropic, particularly those of infectious etiology. Emergence and reemergence of many tropical pathologies have recently aroused the interest of many fields of the study of tropical medicine, even including new infectious agents. Then evidence-based information in the field and regular updates are necessary. Current Topics in Tropical Medicine presents an updated information on multiple diseases and conditions of interest in the field. It includes pathologies caused by bacteria, viruses and parasites, protozoans and helminths, as well as tropical non-infectious conditions. Many of them are considering not only epidemiological aspects, but also diagnostic, therapeutic, preventive, social, genetic, bioinformatic and molecular ones. With participation of authors from various countries, many from proper endemic areas, this book has a wide geographical perspective. Finally, all of these characteristics, make an excellent update on many aspects of tropical medicine in the world.

#### **How to reference**

In order to correctly reference this scholarly work, feel free to copy and paste the following:

A. Samie, A. ElBakri and Ra'ed AbuOdeh (2012). Amoebiasis in the Tropics: Epidemiology and Pathogenesis, Current Topics in Tropical Medicine, Dr. Alfonso Rodriguez-Morales (Ed.), ISBN: 978-953-51-0274-8, InTech, Available from: <http://www.intechopen.com/books/current-topics-in-tropical-medicine/amoebiasis-in-the-tropics-epidemiology-and-pathogenesis>

**INTeCH**  
open science | open minds

#### **InTech Europe**

University Campus STeP Ri  
Slavka Krautzeka 83/A  
51000 Rijeka, Croatia  
Phone: +385 (51) 770 447  
Fax: +385 (51) 686 166  
[www.intechopen.com](http://www.intechopen.com)

#### **InTech China**

Unit 405, Office Block, Hotel Equatorial Shanghai  
No.65, Yan An Road (West), Shanghai, 200040, China  
中国上海市延安西路65号上海国际贵都大饭店办公楼405单元  
Phone: +86-21-62489820  
Fax: +86-21-62489821



© 2012 The Author(s). Licensee IntechOpen. This is an open access article distributed under the terms of the [Creative Commons Attribution 3.0 License](#), which permits unrestricted use, distribution, and reproduction in any medium, provided the original work is properly cited.

IntechOpen

IntechOpen