

# We are IntechOpen, the world's leading publisher of Open Access books Built by scientists, for scientists

6,900

Open access books available

186,000

International authors and editors

200M

Downloads

Our authors are among the

154

Countries delivered to

TOP 1%

most cited scientists

12.2%

Contributors from top 500 universities



WEB OF SCIENCE™

Selection of our books indexed in the Book Citation Index  
in Web of Science™ Core Collection (BKCI)

Interested in publishing with us?  
Contact [book.department@intechopen.com](mailto:book.department@intechopen.com)

Numbers displayed above are based on latest data collected.  
For more information visit [www.intechopen.com](http://www.intechopen.com)



## Crude Oil Transportation: Nigerian Niger Delta Waxy Crude

Elijah Taiwo<sup>1</sup>, John Otolorin<sup>1</sup> and Tinuade Afolabi<sup>2</sup>

<sup>1</sup>Obafemi Awolowo University, Ile-Ife, Department of Chemical Engineering,

<sup>2</sup>Ladoke Akintola University of Technology, Ogbomoso,

Department of Chemical Engineering,

Nigeria

### 1. Introduction

Crude oil is one actively traded commodity globally. Its demand has been growing steadily over the decades, from 60 million barrels per day to 84 million barrels per day (Hasan et al , 2010). In Nigeria, crude oil production has grown from a little above 1000 barrels per day in 1970 to over 3000 barrels per day in 2010 (Fig. 1.1). The world production was conservatively 73 million barrels per day in the year 2005 and within the range of 72 and 75 million barrel per day between 2005 and 2010.

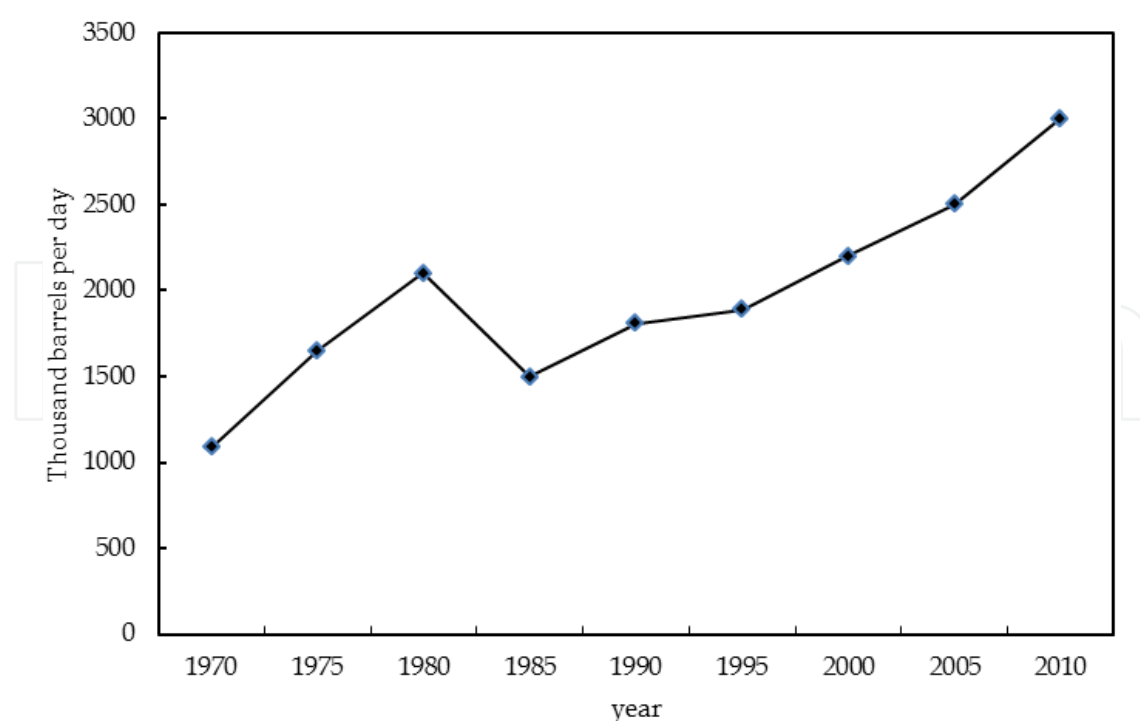


Fig. 1.1. Nigerian crude oil production.

Nigeria is the largest oil producer in Africa and the eleventh largest in the world. ChevronTexaco, ExxonMobil, Total, Agip, and ConocoPhillips are the major multinationals involve in Nigeria oil sector. The main production activity in Nigeria is in the Niger Delta region, which according to master plan, extends over an area of about 70,000 square kilometers which amounts 7.5% of Nigeria's land mass. It lies between latitude 3°N and 6°N and longitude 5°E and 8°E (Fig 1.2). The Niger delta is world's third largest wetland after Holland and Mississippi. It covers a coastline of 560 km, which is about two-thirds of the entire coastline of Nigeria (Fawehinmi, 2007).

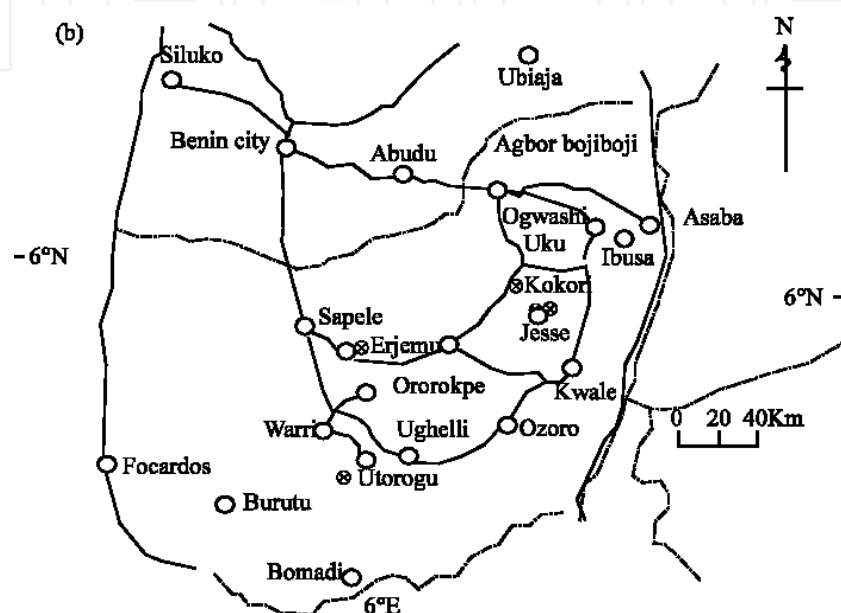


Fig. 1.2. Niger Delta region, Nigeria.

Nigeria has a substantial reserve of paraffinic crude oils (Ajienka and Ikoku, 1997), known for their good quality (low sulphur, high API gravity), and containing moderate to high contents of paraffinic waxes. The data correlated for light, medium and heavy crude oil samples from different sites in Nigeria show densities ranging from 0.813-0.849 g/ml, 0.866-0.886 g/ml, and 0.925-0.935 g/ml at 15°C respectively. Characteristically, waxy crude oils have undesirably high pour points and are difficult to handle where the flowing and ambient temperatures are about or less than the pour-point. They exhibit non-Newtonian flow behaviour at temperature below the cloud point due to wax crystallization. Consequently, the pipeline transportation of petroleum crude oil from the production wells to the refineries is threatened.

The Nigerian Niger Delta crude oil, which is the mainstay of Nigerian economy, exhibits waxiness, with deposits in the range of 30-45 % (Adewusi 1997; Fasesan and Adewumi, 2003; Taiwo et al., 2009 and Oladiipo et al., 2009). In fact, pipelines have been known to wax up beyond recovery in Nigeria. Production tubing has also been known to wax up, necessitating frequent wax cutting, using scrapers conveyed by wireline, which is an expensive practice. Billions of dollars has been lost to its prevention and remediation (Oladiipo et. al., 2009). The resultant effect on the petroleum industries include among others, reduced or deferred production, well shut-in, pipeline replacements and/or abandonment. For efficient operation of a pipeline system, steady and continuous flow

without any interruption is desirable (Chang et al., 1999). The difficulties in pipeline transportation are due to this complex nature of crude oil, which cause a variety of difficulties during the production, separation, transportation and refining of oil (Al-Besharah et al., 1987). For example, formation of asphaltic sludge after shutting in a production well temporarily and after stimulation treatment by acid has resulted in partial or complete plugging of the well (Ayala et al., 2007 and Escobedo et al., 1997). Relative amount and molecular distribution of wax, resin and asphaltene as well as thermal and shear history of high pour point waxy crude sample directly affects the rheological properties of crude oil (Ajiienka and Ikoku, 1997).

Phase changes in petroleum fluids during production, transportation and processing, constitute a challenging and an industrially important phenomenon. Polydisperse nature of hydrocarbons and other organic molecules in petroleum fluids accounts for the complexity of their phase behavior (Mansoori, 2009), which could be reversible or irreversible (Abedi et al., 1998). Generally, heavy fractions have little or no effect on the liquid-vapour phase behaviour of the majority of petroleum fluids. Their main contribution is in solid separation from petroleum fluids, due to changes in the composition, temperature and pressure (Mansoori, 2009; Escobedo and Mansoori, 2010). The main components of the heavy fraction, which participate in the solid phase formation include asphaltenes, diamondoids, petroleum resins and wax. Petroleum wax consist mainly saturated paraffin hydrocarbons with number of carbon atoms in the range of 18–36. Wax may also contain small amounts of naphthenic hydrocarbons with their number of carbon atoms in the range of 30–60. Wax usually exists in intermediate crudes, heavy oils, tar sands and oil shales. The distribution of n-alkanes as a function of the number of carbon-atom in a paraffin wax sample is given in figure 1.3 below.

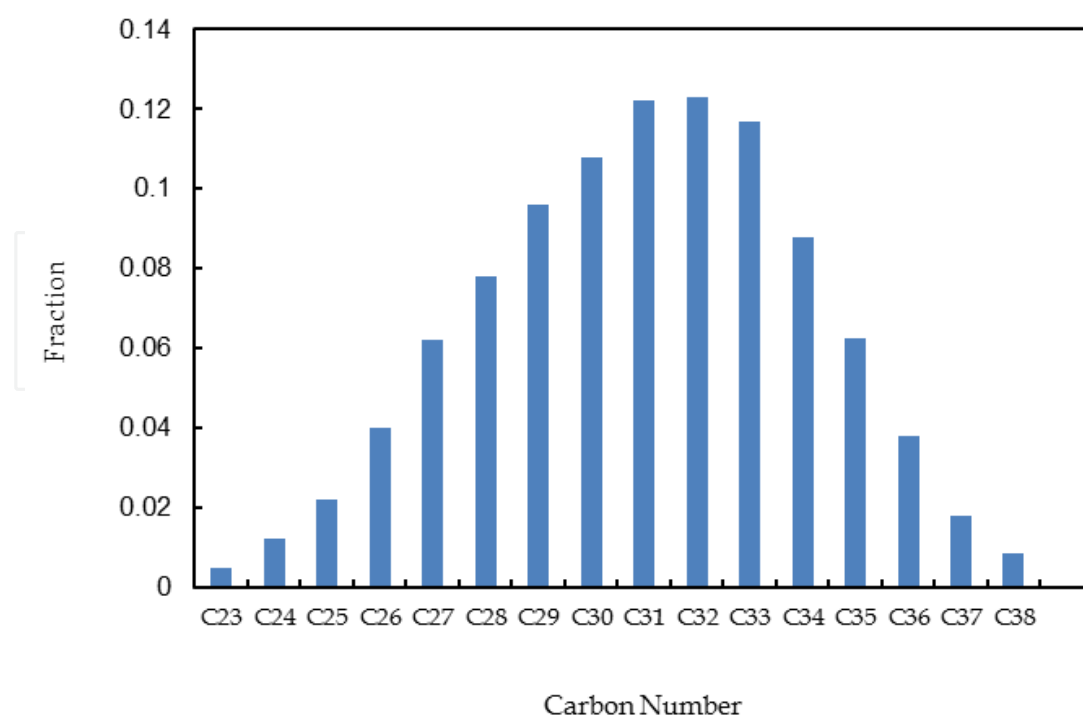


Fig. 1.3. Carbon number distribution of paraffin wax.

Phase equilibrium deal with the various situations in which two or more phases (or state of aggregation) coexist in thermodynamic equilibrium with each other. Reservoir oil contains paraffin wax in solution. The average temperature of the oil in production well is somewhat higher than the atmospheric temperature. When a waxy crude oil is cooled, the heavier paraffinic constituents begin to separate as solid crystals once the solubility limit is exceeded (Karan et al., 2000). Thermodynamically, the solid-liquid phase boundary temperature, that is the maximum temperature at which the solid and liquid phases co-exist in equilibrium at a fixed pressure, is the wax appearance temperature (WAT). This depends on wax concentration, the crystallization habit of wax, and the shear stability of different wax structures (Holder and Winkler, 1965; Hussain et al., 1999).

This contribution therefore present the various phase-transitions, which may occur in petroleum fluids, and a unified perspective of their phase behaviors. Experimental determination of the rheological properties and the characteristics of the crude oil were carried out and the data tested on different established rheological models for ease of simulating the flow behavior of the crude oil. The wax deposition tendencies of crude oil in the pipelines and its influences on the transportation capacity were determined. The various methods of mitigating flow assurance problems and wax deposition inhibition highlighted towards adequate crude oil production.

## **2. Experimental methods**

### **2.1 Materials**

All crude oil samples used in this study were from Niger Delta Oil field in Nigeria, having density and API gravity in the range of 847 - 869 kg/m<sup>3</sup> and 24.4 - 36.5 ° at 15 °C, respectively. For physical properties measurements, the crude samples were shaken vigorously for one hour to homogenize and presents good representation of samples. Standard methods were employed in determination of the physical properties.

### **2.2 Rheological properties measurements**

The rheological behavior of the crude oil samples were studied using Haake Rheo Stress model RS100 rheometer having several operating test modes. The test sample charged into the rheometer cup was allowed to equilibrate at a particular temperature. The unit was set to desired shear rates and operated at 10 revolution per minute, then the temperature of the test, the shear rate and the shear stress were recorded. The procedure was repeated at various other set temperatures and shear rates. The resulting sample deformation was detected using digital encoder with high impulse resolution. Thus, it allows measurements of small yield values, strains, or shear rates. The rheometer is equipped with a cone and plate sensor.

### **2.3 Determination of the wax content**

Wax content was determined by precipitation method (Coto et al., 2008). It involves samples dissolution in n-pentane, precipitation with acetone:n-pentane mixture in ratio 3:1 and separating by filtration in Buchner funnel using glass microfiber Whatman filter N934.

## 2.4 Pipeline crude oil transportation simulation

The pipeline transportation system simulated for crude oil experimental measurement comprises the experimental pipe system, the circulating water system and crude oil reservoir system (Fig. 2.1.).

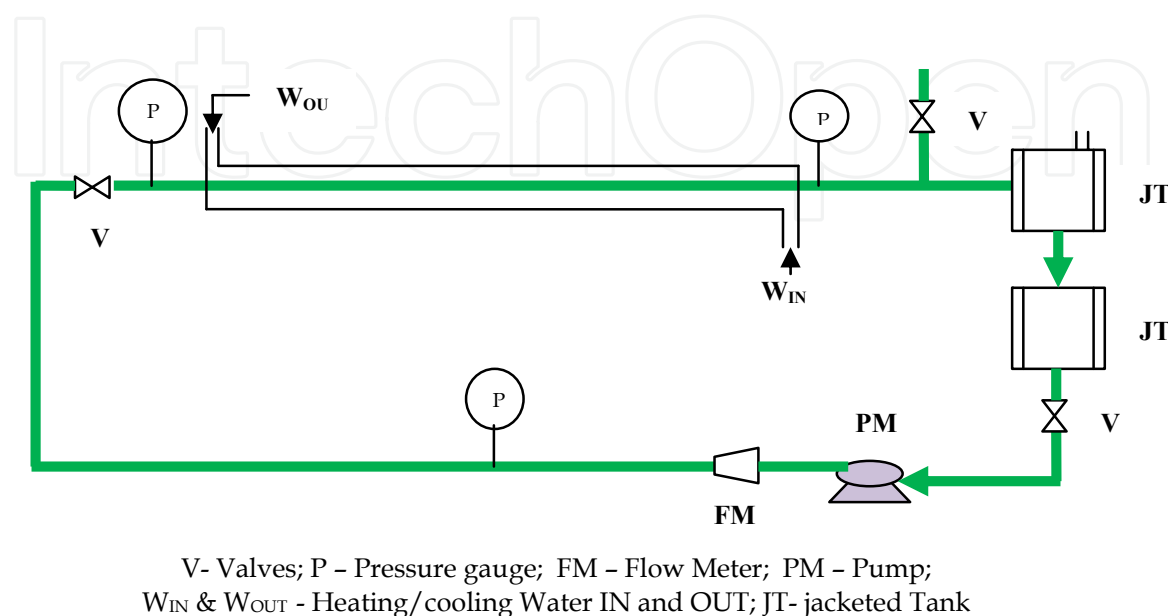


Fig. 2.1. Simulated pipeline transportation system.

The experimental pipe system and water circulation system are arranged in shell and tube mode. The water jacket around the reservoir tank can control the oil temperature in the pipe system while water circulation system controls the wall temperature of the test section. The internal diameter of pipe at both the test and reference section is 20.47 mm with the total length of 2.75 m.

### 2.4.1 Wax deposition in simulated transportation flow line

The differential pressure of the test section and the reference section were measured during the wax transportation experiment. The wall temperature of the test section was varied and the differential pressure measured. The data collected were used to calculate the extent of the wax deposition and to elucidate on the mechanism of deposition. Carbon number distribution of paraffin wax determined by gas chromatography technique using the IP 372/85 methods.

## 2.5 Evaluation tests of flow improvers

Effectiveness of some flow improvers for the waxy crude oils was determined through the pour point test (using Herzog MC 850 pour point test equipment) according to the ASTM-97 and kinematic viscosity by the IP 71 procedures. The dynamic inhibitive strength of these modifiers was equally experimented using the simulated crude oil pipeline transportation.

3. Results and discussions

3.1 Rheological behaviour and modelling

Rheology is the science of the deformation of matter. It involves the study of the change in form and flow of matter in term of elasticity, viscosity and plasticity under applied stresses or strains. The rheological behavior of waxy oil is crucial in the design of pipeline, flow handling equipment and processing purposes in the oil industry. The study of the rheological characteristics of crude oil is significant to lowering the energy consumption and ensuring safety and cost effectiveness in pipeline transportation of waxy crudes. Figure 3.1 shows a typical rheogram in terms of shear stress and shear rate. Shear stress increases asymptotically and significantly with shear rate. Several researchers have investigated models to describe the rheological properties of waxy oils (Davenport and Somper, 1971; Matveenکو et al., 1995 and Remizov et al., 2000). Generally the behaviour can be broadly grouped into two; Newtonian and non-Newtonian fluids. Whereas the Newtonian fluids exhibit a linear relationship between shear stress and shear rate, the non-Newtonian fluids do not. The non-Newtonian fluids have yield stress, which is the upper limit of stress before flow occurs. At this point, the range of reversible elastic deformation ends and range of irreversible deformation or visco-elastic viscous flow occur (Chang et al., 2000). The existence of yield stress behavior depends upon the degree on interlocking structure developed by waxing and fragility of the network (Philip et al., 2011).

Modeling analysis carried out by fitting the rheological data to three models are reported in Table 3.1. The models include

Bingham plastic,

$$\tau = \tau_o + \mu_P \gamma \tag{3.1}$$

Casson,

$$\tau^{1/2} = \tau_o + \mu \gamma^{1/2} \tag{3.2}$$

and Power law,

$$\tau = m \gamma^n \tag{3.3}$$

where  $\gamma$  is the applied shear rate ( $s^{-1}$ ) and  $\tau$  is the corresponding shear stress in Pa,  $m$  and  $n$  are consistency index in Pa s and flow behavior index, the  $\tau_o$  and  $\mu$  are the apparent yield stress in Pa and the apparent viscosity in Pa s. Bingham model predicted very adequately the flow behavior of the crude oil over the tested range of shear rates. This observation suggests Nigerian Niger Delta waxy crude oil exhibits plastic behavior. Table 3.1 reports the highest regression correlation coefficient,  $R^2$ , of 0.992 for the Bingham model. This is similar to an earlier work on waxy crudes from this area (Taiwo et al., 2009), with good prediction of the yield stress within percentage deviation of  $2.88 \pm 0.15$ .

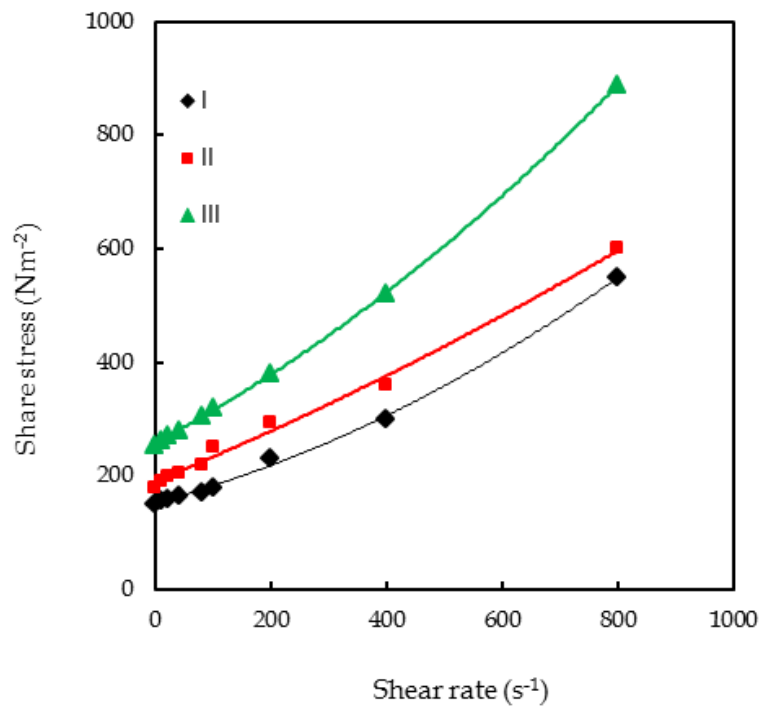


Fig. 3.1. Rheogram of the waxy crude samples.

| Sample | Bingham Plastic |         |       | Casson   |       |       | Power Law |       |       |
|--------|-----------------|---------|-------|----------|-------|-------|-----------|-------|-------|
|        | $\tau_o$        | $\mu_p$ | $R^2$ | $\tau_o$ | $\mu$ | $R^2$ | $m$       | $n$   | $R^2$ |
| I      | 139.4           | 0.487   | 0.983 | 113.0    | 0.387 | 0.898 | 66.09     | 0.259 | 0.766 |
| II     | 184.9           | 0.505   | 0.991 | 149.8    | 0.385 | 0.944 | 91.20     | 0.240 | 0.836 |
| III    | 244.0           | 0.779   | 0.992 | 197.4    | 0.485 | 0.919 | 501.19    | 0.253 | 0.800 |

Table 3.1. Rheological Parameters and Correlation Coefficients of Models.

According to Bogne and Doughty (1966), the rheological characteristics of materials form a continuous spectrum of behavior, ranging from the perfectly elastic Hookean solid at one extreme, to that of purely viscous Newtonian fluid at the other. Between these idealized extremes is the behavior of real materials that include, among others, non-Hookean solids, non-Newtonian fluids, and viscoelastic substances. The waxy crude oil generally belongs to the non-Newtonian fluids while the Nigerian Niger delta waxy crude showed plastic behavior, which is time dependent non-Newtonian fluid.

3.2 Temperature effect

Temperature has a strong effect on viscosity and viscous behavior. This effect provides the flow behavior curve in terms of the viscosity-shear rate or viscosity-shear stress relationships. Fig. 3.2 shows the effect of temperature on shear stress-shear rate behavior over the temperature range of 25 – 55 °C experimented. The crude oil shows non-Newtonian shear thinning (viscosity reduction) behavior over the range of shear rates studied. By definition, yield stress,  $\tau_o$ , is the limiting stress below which a sample behaves as a solid. At low stress, the elastic deformation takes place, which disappears when the applied stress is released (Guozhong and Gang , 2010 ). Chang et al., (1998) described the

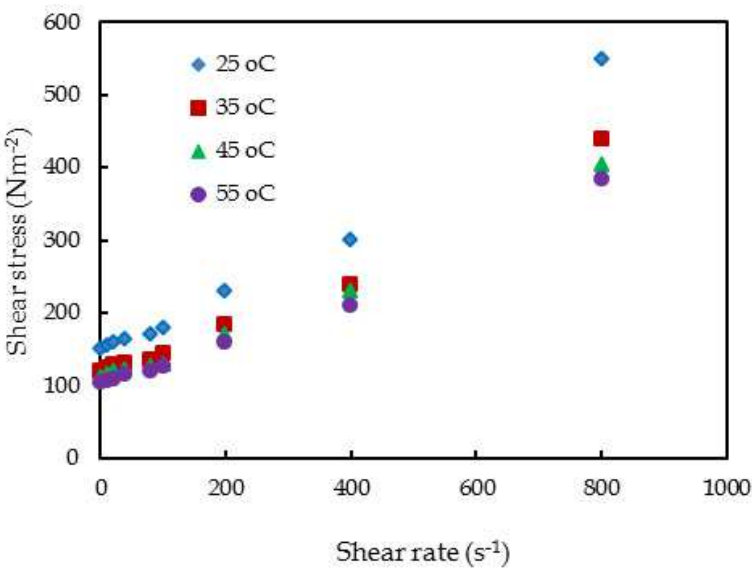


Fig. 3.2. Shear stress as a function of shear rate with varying temperature (Sample I).

yielding behavior of a waxy crude oil as having three distinct characteristics—an elastic response, a creep and a fracture. The shear stress at the point of fracture is the value of practical importance and is usually taken as the yield stress. Above the yield stress point, the applied stress leads to unlimited deformation which causes the sample to start flow (Ghannam and Esmail, 2005). The yield point, which is required to start the flow, decreases with temperature from 150 Nm<sup>-2</sup> at room temperature of 25 °C to 104 Nm<sup>-2</sup> at the temperature of 55 °C. Similar trend ensued for the other samples. At a higher cooling rate, the rate of wax precipitation is higher. Hence, a higher stress is necessary either to aggregate the crystals, or to breakdown the structure.

In addition, the apparent viscosity decreases considerably with increasing temperature (Fig 3.3).

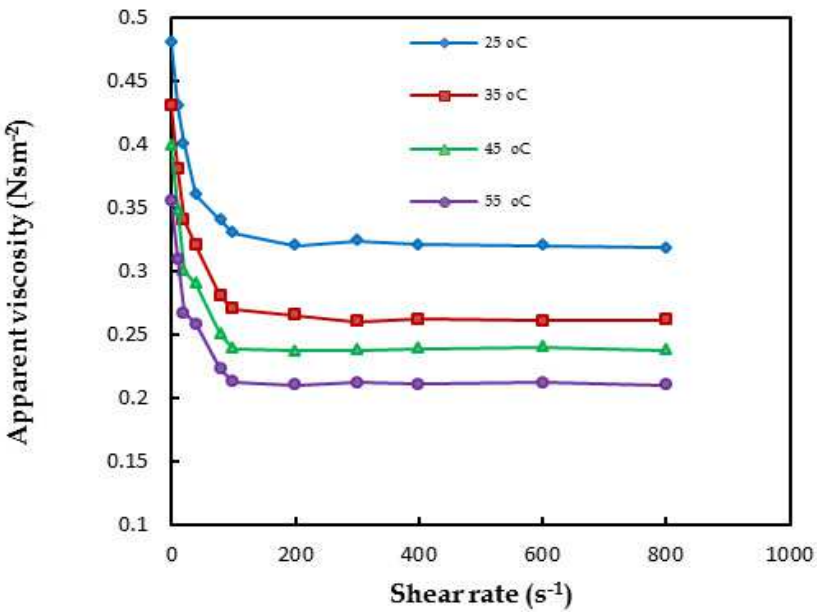


Fig. 3.3. Effect of temperature on viscosity of the crude.

Viscosity differences are relatively larger at low shear rates than at high shear rates. At high temperature, wax in the crude oil could not agglomerate and form aggregates, and hence reducing the oil viscosity. At high shear rate, ( $\geq 100\text{ s}^{-1}$ ), an almost constant viscosity was observed with increasing share rate. This could result from effective dispersion of wax agglomerates in the continuous phase originally immobilized within the agglomerate, after being completely broken down into the basic particles.

The observed variation with temperature is attributable to the strong effect of temperature on the viscosity of wax and asphaltene components in crude oil. At high temperature, the ordered structure of these chemical components are destroyed, and hence reducing the oil viscosity (Khan, 1996). As the shear rate increases, the chain type molecules disentangled, stretched, and reoriented parallel to the driving force, and hence reduced the heavy crude oil viscosity (Ghannam and Esmail,1998, 2006).

3.3 Wax deposition characteristics

Fig. 3.4 shows the wax deposited as a function of temperature for the three Nigerian crude oils samples. Sample II has the highest percentage wax content of 33.5% with wax appearance temperature (WAT) of 43.5 °C while for sample I the wax content is 10.5 % with WAT of 35 °C.

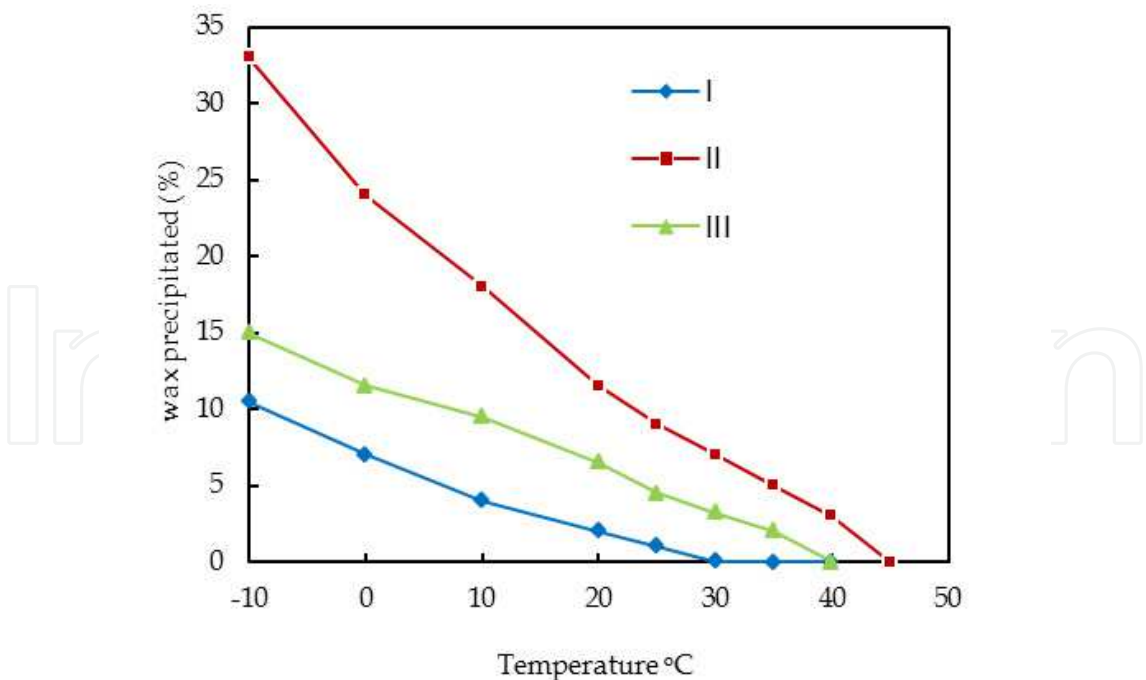


Fig. 3.4. Wax precipitation as a function of temperature.

The wax appearance temperature (WAT) and the pour point temperature (PPT) are good pointers to the temperature regime, in which a waxy crude oil is expected to start to show non-Newtonian behavior. Their determination is an important step in the study of rheological behavior of such systems. In fact, WAT is probably the most important flow assurance measurement for waxy crudes. Pour point represents the lowest temperature at which the crude oil can be stored or handled without congealing in the tanks or pipelines. Usually, it is 10-20 °C lower than the cloud point (Ajienka, 1983). The pour point of samples experimented were in the range of 18 and 32 °C. As the fluid cools below WAT, crystal size tends to increase and crystal aggregation is usual, particularly under quiescent and low shear condition, such that the solid-like behavior of the waxy suspension increases. At some point between the WAT and pour point, a transition can be determined depending on wax development and is thus strongly affected by thermal and shear conditions. This is considered an indication of initial development of interlocking network (Lopes-da-Silva and Coutinho, 2004).

3.4 Wax deposition rate in flow system

As trot to understanding the deposition pattern and hence the flow assurance of the oil samples, simulated transportation flow pipe described in section 2.4 was developed. It is a modification to earlier work (Taiwo et al., 2009), with consideration for the idea of Guozhong and Gang (2010). As expected, the wax deposit thickness showed inverse proportionality with wall temperature and direct relation with temperature difference between the oil and pipe wall (Fig 3.5). In addition, a monotonic increase with time was observed. The low thickness observed at 42 °C wall temperature is significant of closeness to the WAT of oil sample which is 43.5 °C. In addition, the average wax deposition rate (mm/d) increases with increased difference in temperature as shown in Fig. 3.6.

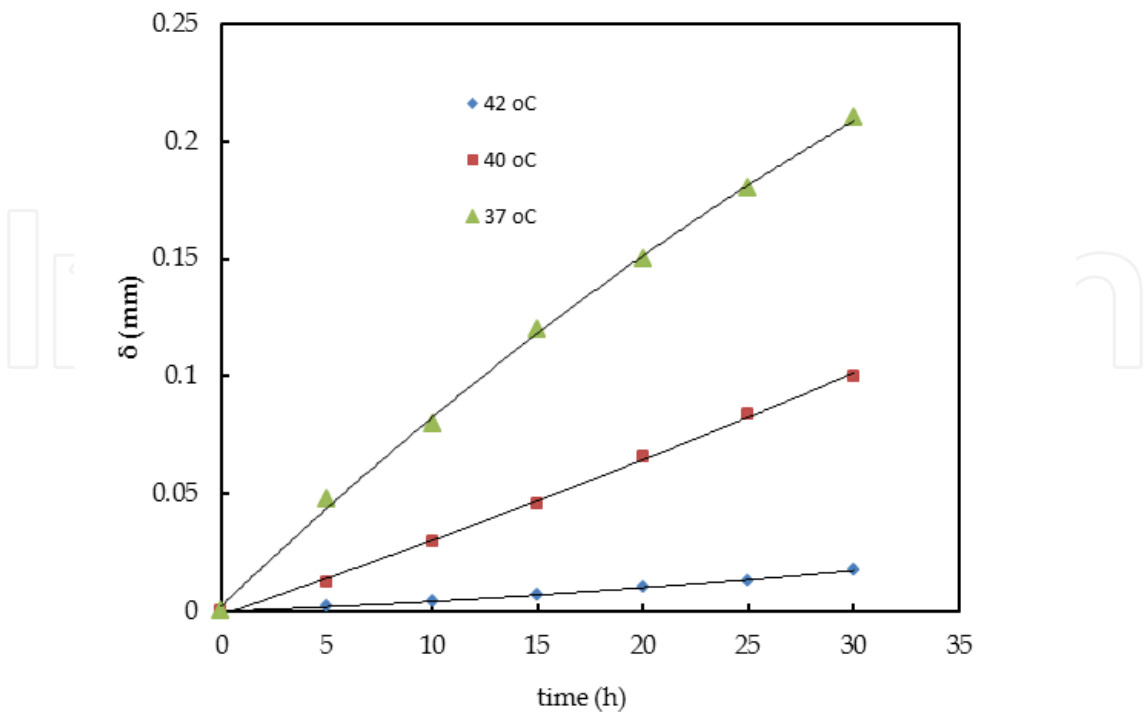


Fig. 3.5. Wax deposit thickness variation with time as a function of wall temperature.

The average wax deposition rates reported in Fig. 3.6 were at temperature differences of 3 °C, 5 °C and 8 °C respectively, at 30 h deposition time. Generally, gradual increase in deposition rate with increasing temperature difference was observed. However, at zero °C temperature difference, experimental results showed that no deposition occur because there is no driving force for lateral diffusion of the wax molecules. When the oil temperature is 50 °C, the average wax deposition rate was zero at temperature difference of 3 °C, corresponding to the wall temperature of 47 °C, which is slightly above the WAT of the crude sample. Under this condition, the paraffin molecule super saturation concentration is very low, thus, its wax deposition power tend to zero. However, at 5 °C temperature difference, the deposition rate was 0.025 mm/d. This observation was due to lateral diffusion of the wax in crude oil. When temperature difference increased to 8 °C, the rate increased to 0.10 mm/d. It reflects wall temperature of 42 °C which is lower than the WAT of the crude oil sample.

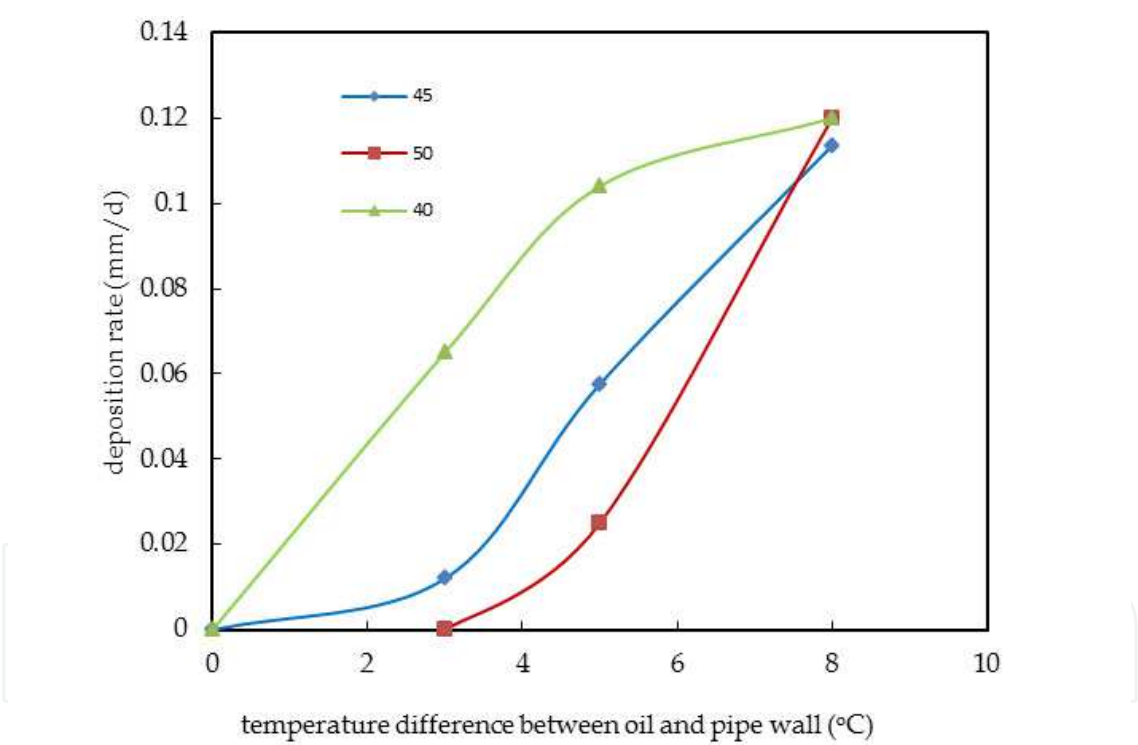


Fig. 3.6. Variation of deposition rate with temperature difference.

At the oil temperature of 45 °C, the average wax deposition rate increases with the fall in the wall temperature. When the temperature difference between the oil and the wall is 8 °C (the wall temperature is 37 °C), the average wax deposition rate is 0.12 mm/d and higher than that experienced for 50 °C oil temperature. For the oil temperature of 40 °C, deposition rate is generally higher than other temperature conditions. However, at higher temperature

difference, the deposition rate almost assumed same value. This may be due to wax content in the crude.

The theory of the molecular diffusion suggests gradual wax deposition in the pipe as the wall temperature decreases. However, at low wall temperature of the test section, the differential pressure of the test section increased sharply. This rapid increase of the differential pressure should therefore not be the resultant effect of the wax deposition, since a gradual increase in wax deposition was observed (Figs. 3.4 and 3.5). A fast increase of the oil viscosity near the wall could have resulted from the drop in wall temperature, thereby distorting the flow regime in the test section due to the radial differential temperature; this makes the differential pressure of the test section increase suddenly. Mansoori, (2009) attributes this observation to phase transition which influence the Gibbs energy of the system hence sudden change in pressure drop.

### 3.5 Doping of waxy crude

Wax build-up in tubing and flow lines is a typical flow assurance problem. This makes transportation of such waxy crudes un-economically feasible. To improve mobility of the oils, viscosity reduction is imminent. This can be done by heating, blending of the oils with lighter oils or other solvents having pour-point depressing effect (Hemant et al., 2008). In addition there are applications of microwaves, ultrasound irradiation, magnetic fields, lining and coating pipelines with fiber-reinforced plastics to reduce the wettability of paraffin with the wall of the pipe, and covering the inner wall surfaces with polypropylene (Hemant et al., 2008). Pipeline heating is usually deployed for small distances (with insulation) and moving the oil as quickly as possible. This passive insulation becomes in effective when longer pipe length oil transport is required. High backpressure will set in requiring expensive booster pumps. Electrically heated subsea pipeline is considered an alternative (Langner and Brass, 2001). Even then, the complexity of the pipeline design required and need to heat whole pipe length makes the configuration costly to deploy and operate (Martinez-Paloua et al., 2011). Doping with solvent, which keeps the wax in solution, is therefore essential in ensuring oil mobility. Based on evaluation of preliminary studies (Adewusi, 1998; Fasesan and Adewumi, 2003; Bello et al., 2005a, 2005b, 2006 and Taiwo et al., 2009), xylene based pour point depression solvents were considered. Table 3.2 reports some solvents for improving the transportation of Niger Delta waxy crudes. Xylene (X) and tri chloro ethylene (TCE) are good pour point depressant based on the work of Adewusi (1998) and Bello et al., (2005a), while Taiwo et al., (2009) showed tri ethanol amine (TEA) to be very good wax deposition inhibitor (Table 3.2). These three solvents further confirm their wax inhibition strength from the report of the present experimentation (Table 3.3). Xylene reduced the pour point from 32 °C to 18 °C for sample II that has the highest wax content of 30.5 percent, while TCE and TEA reduced it to 19.5 and 17 °C, respectively. Pour point depressants (PPDs) accomplish this task by modifying the size and shape of wax crystals and inhibit the formation of large wax crystal lattices (Wang et al., 2003). Generally, the PPDs create barrier to the formation of the interlocking crystal wax network (Wang et al. 1999). As a result, the altered shape and smaller size of the wax crystals reduce the formation of the interlocking networks and reduces the pour point (Hemant et al., 2008) by preventing wax agglomeration (Hafiz and Khidr, 2007). In some cases pendant chains in the

additive co-crystallize with the wax and the polar end groups disrupts the orthorhombic crystal structure into a compact pyramidal form (Hemant et al., 2008).

Trichloroethylene, xylene and tri ethanolamine actively decreased the pour point of the samples and their wax deposition potentials on doping. The oxygen containing groups in the doping agents take the role of inhibiting the growth of waxes and poisoning them by adsorptive surface poisoning mechanism. The PPDs on adsorption on the surface of the wax renders its nuclei inactive for further growth. The waxes then occur in small sized particles distributed within the crude oil samples, thus cannot form net-like structure required for solidification and deposition.

| Pour Point<br>Depressant | Adewusi, 1998<br>Bello et. al., 2005 |                       | Taiwo et al 2009           |                       |                            |                       |                            |                       |
|--------------------------|--------------------------------------|-----------------------|----------------------------|-----------------------|----------------------------|-----------------------|----------------------------|-----------------------|
|                          | EB                                   |                       | FL                         |                       | BL                         |                       | EL                         |                       |
|                          | Wax<br>deposition<br>(g/g)           | Pour<br>point<br>(°F) | Wax<br>deposition<br>(g/g) | Pour<br>point<br>(°C) | Wax<br>deposition<br>(g/g) | Pour<br>point<br>(°C) | Wax<br>deposition<br>(g/g) | Pour<br>point<br>(°C) |
| No additive              | 0.05                                 | 36                    | 0.25                       | 28                    | 0.28                       | 33                    | 0.335                      | 36                    |
| Methyl Ethyl<br>Ketone   | 0.037                                | 22                    | 0.15                       | 22                    | 0.185                      | 18                    | 0.188                      | 25                    |
| Tri Ethanol<br>Amine     | -                                    | -                     | 0.085                      | 18                    | 0.106                      | 23                    | 0.107                      | 16                    |
| Xylene                   | 0.013                                | 17                    | 0.115                      | 17                    | 0.143                      | 17                    | 0.154                      | 18                    |
| Cyclo-<br>hexanone       | 0.028                                | 18                    | -                          | -                     | -                          | -                     | -                          | -                     |
| Tri Chloro<br>Ethylene   | 0.009                                | 16                    | -                          | -                     | -                          | -                     | -                          | -                     |

Table 3.2 Evaluation of various solvents for flow improver.

| Pour Point<br>Depressant | I                          |                       | II                         |                       | III                        |                       |
|--------------------------|----------------------------|-----------------------|----------------------------|-----------------------|----------------------------|-----------------------|
|                          | Wax<br>deposition<br>(g/g) | Pour<br>point<br>(°C) | Wax<br>deposition<br>(g/g) | Pour<br>point<br>(°C) | Wax<br>deposition<br>(g/g) | Pour<br>point<br>(°C) |
| No additive              | 0.105                      | 18                    | 0.305                      | 32                    | 0.150                      | 27                    |
| Methyl Ethyl Ketone      | 0.069                      | 14                    | 0.164                      | 23.5                  | 0.084                      | 21.5                  |
| Tri Ethanol Amine        | 0.040                      | 12                    | 0.092                      | 17                    | 0.053                      | 18.5                  |
| Xylene                   | 0.054                      | 11.5                  | 0.130                      | 18                    | 0.067                      | 17.5                  |
| Cyclo-hexanone           | 0.052                      | 12.5                  | 0.182                      | 22                    | 0.076                      | 18                    |
| Tri Chloro Ethylene      | 0.048                      | 11                    | 0.171                      | 19.5                  | 0.062                      | 17                    |

Table 3.3 Screening of common solvents for flow improver.

It is suggested that the reduction of the measured viscosity is due to the interactions between the hydroxyl functions or the delocalized unpaired electron over the  $\pi$ -orbital especially in the phenyl group of PPD and some functionalities of the wax (Gateau et al., 2004). This could have premised the performance of TEAX and TCEX. With 0.1 volume fraction of TEA or TCE in TEAX or TCEX binary, the shear thinning behavior is enhanced, and the viscosity as well as the pour point decreases as the temperature increases (Figs 3.7 and 3.8). TEAX improved the rheological characteristic behavior better than TCEX. The reduction of viscosity on the addition of the solvents is due to the dissolution of paraffin wax, the effect xylene on the effectiveness of these dopants is significant and play a major role in reducing the viscosity. This observation gave credence to the report of Chanda et al., (1998).

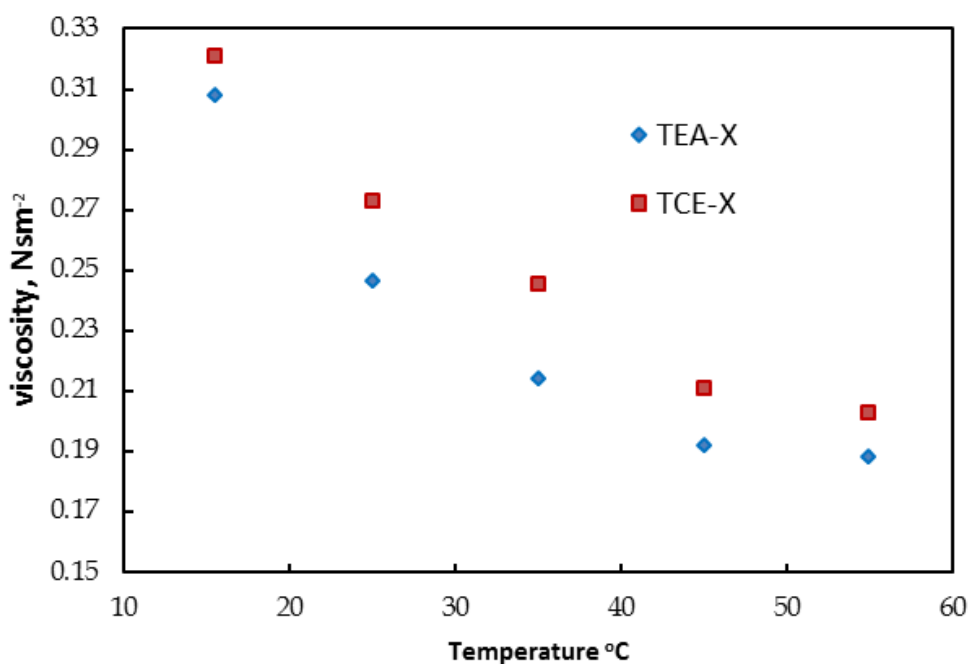


Fig. 3.7. Viscosity variation for doped sample II with temperature.

3.6 Hydrocarbon distribution in the crude oil wax

The crude oil samples wax had similar hydrocarbon distributions. The carbon number distribution of the paraffin wax is shown in Fig. 3.9. Samples I and III had very identical carbon number distribution, and all samples showed the same peak carbon number. This ranged between C31 and C33 indicative of paraffinic wax, although tailing to C38 an occurrence of naphthenic crude.

The dynamic inhibitive strength of the flow improvers tested by applying the doping agents into the crude samples in the reservoir tanks of the simulated pipeline transportation set-up, showed a marked reduction relative to that obtained for undoped samples. This showed that the PPD apart from lowering the pour point of the waxy crude caused reduction in pressure build-up by keeping the wax particles in solution and hence reduced viscosity of crude samples. Wax deposition was not feasible in the test pipe surfaces even at 8 °C temperature difference between the oil temperature and the wall temperature. The moderately higher-pressure drop with TCEX over the TEAX modified crude samples further confirms the strength of TEAX in wax crystal modification (Fig 3.10). Plate 3.1 showed the wax dispersed in crude oil sample upon modification. This evidently supports the view of Azevedo and Teixeira (2003) that shear dispersion play significant role in wax deposit removal thus affecting the rate of wax accumulation.

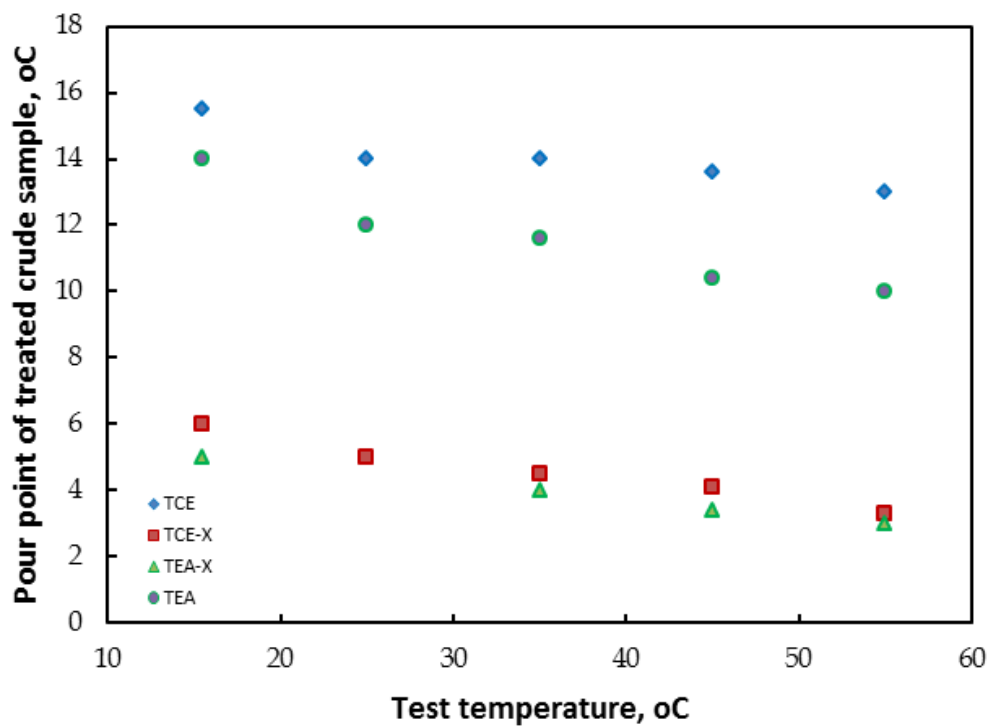


Fig. 3.8. Pour point depression test for sample II at varying test temperature.

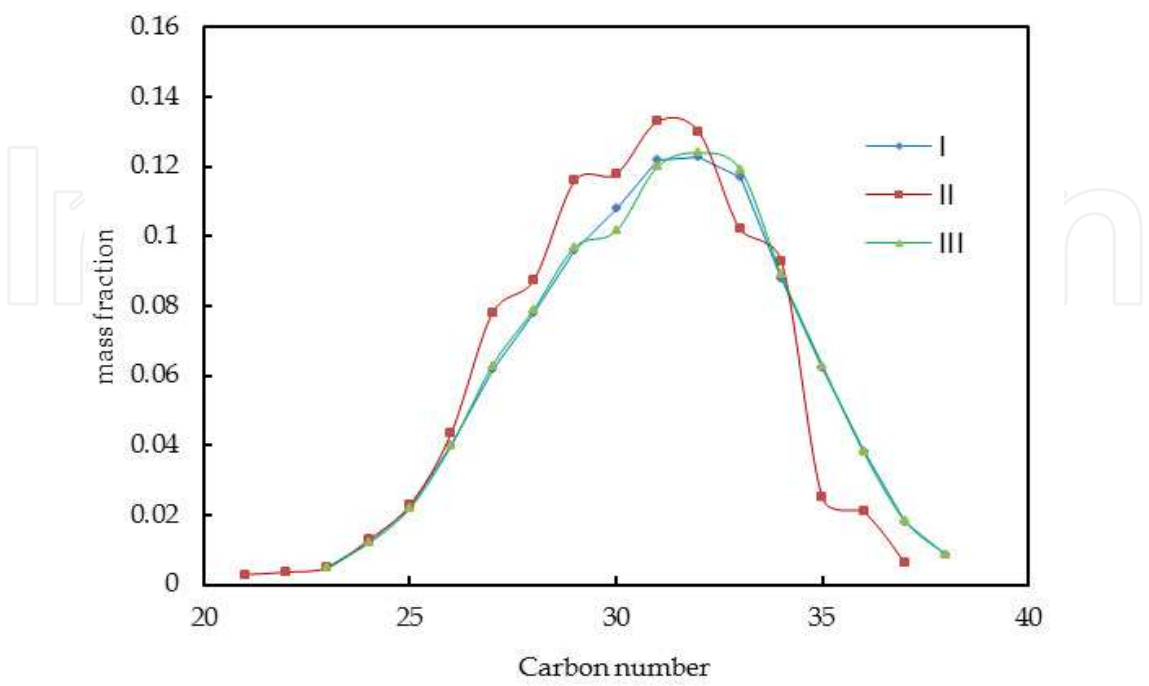


Fig. 3.9. Hydrocarbon distribution in wax samples.

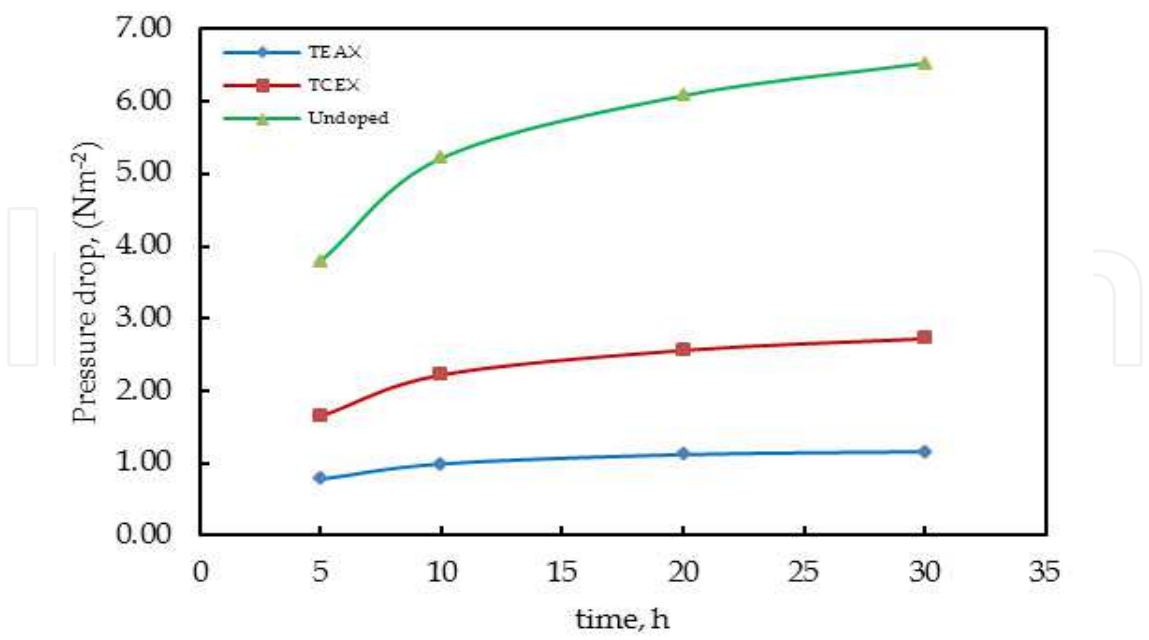


Fig. 3.10. Variation of pressure drop with time for doped and undoped sample in dynamic test.

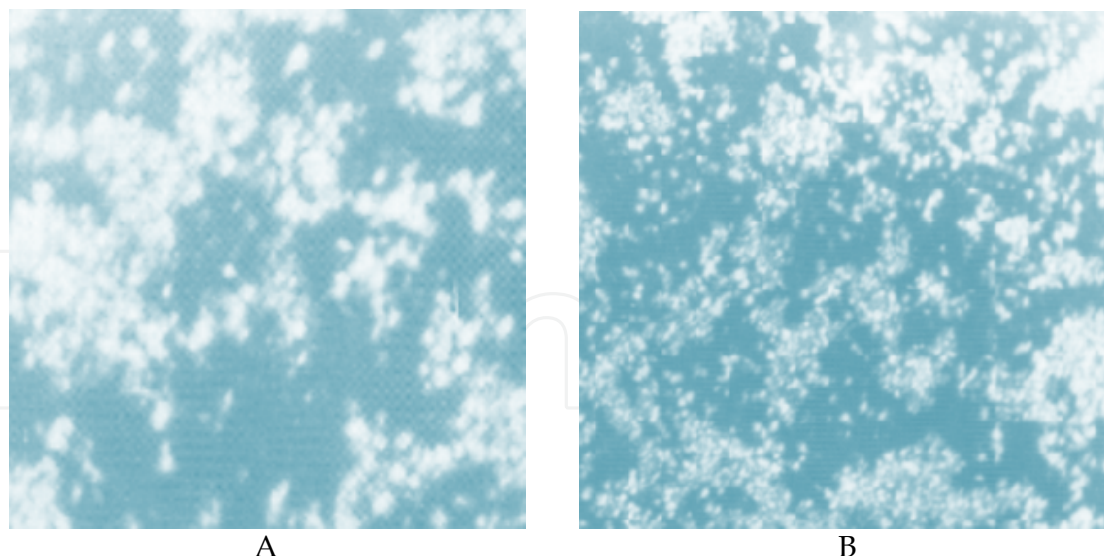


Plate 3.1. Micrograph of crude sample at X 500 magnification (A: undoped B: doped)

#### 4. Conclusion

A study of transportation of waxy Nigerian Niger Delta crude oil using flow improver was performed. This study has been able to highlight the significance of TEA in improving the flow of this crude oil by significantly lowering the pour point and wax deposition potentials of the crude sample. The crude oil had been established to show plastic behaviour with Bingham non-newtonian model adequately predicts its rheological behaviour with occurrence of yield stress. The simulated pipeline transportation system for experimentation revealed mass diffusion mechanism for transport and deposition of waxes on the tube wall. The characteristics and behaviour of solvent modified crude oils should help in addressing cost-effective solution to flow assurance problems in the industry.

#### 5. Acknowledgment

The authors appreciate the technical staff of Chemical Engineering Department, Obafemi Awolowo University, Ile-Ife, Nigeria for the fabrication works, Department of Petroleum Engineering, University of Ibadan, Nigeria for making their facility available for this study, and the Department of Petroleum Resources (DPR), Nigeria, for assistance during the sample collection.

#### 6. References

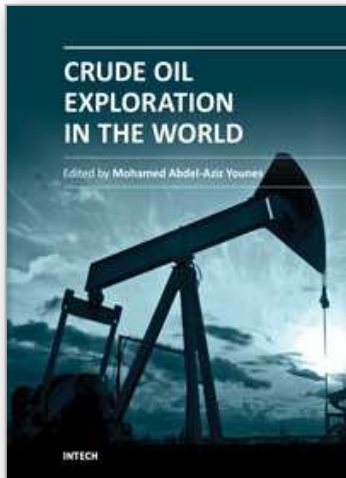
- Abedi, S.J., Seyfaie, S. and Shaw, J.M. (1998). Unusual retrograde condensation and asphaltene precipitation in a model heavy oil system, *Journal of Petroleum Science and Technology*. 16 (3/4), 209–226.
- Adewusi V. A. (1998). An improved inhibition of paraffin deposition from waxy crudes. *Petroleum Science and Technology* 16(9 & 10), 953 - 970
- Adewusi, V. A. (1997). Prediction of wax deposition potential of hydrocarbon systems for viscosity-pressure correlations. *Fuel* 76:1079–1083.

- Ajienka, J. A. (1983) The effect of Temperature on rheology of Waxy crude oils and its implication in production operation, Ph. D Dissertation, University of Port Harcourt, Nigeria.
- Ajienka, J.A. and Ikoku, C.V, (1997). Waxy crude oil handling in Nigeria: practices, problems and prospects, *Energy sources* , Vol. 12. No. 4. pp. 463-478.
- Al-Besharah, J. M.; Salman, O. A. and Akashah, S. A. (1987) Viscosity of crude oil blends. *Industrial and Engineering Chemistry Research*, 26, 2445-2449.
- Ayala, O. F.; Ayala, L. F. and Ayala, O. M. (2007) Multi-phase Flow Analysis in Oil and Gas Engineering Systems and its Modeling. *Hydrocarbon World*, 2007, 57-60
- Azevedo L. F. A. and Teixeira A. M. (2003) A critical review of the modeling of wax deposition mechanism. *Petroleum Science & Technology*, 21, 393-408
- Bello O. O, Ademodi B. T. and Akinyemi P. O. (2005a). Xylene-based inhibitor solves crude oil wax problems in Niger Delta pipeline. *Oil & Gas Journal*, 103, 10-56.
- Bello, O. O.; Fasesan, S. O.; Akinyemi, P. O.; Macaulay, S. R. A. and Latinwo, G. K. (2005b) Study of the influence of xylene-based chemical additive on crude oil flow properties and paraffin deposition inhibition, *Engineering Journal of the University of Qatar*, 18, 15-28
- Bello, O. O.; Fasesan, S. O.; Teodoriu, C. and Reicicke, K. M. (2006). An evaluation of the performance of selected wax inhibitors on paraffin deposition of Nigerian crude oils. *Petroleum Science and Technology* 24, 195-206
- Chanda, D.; Sarmah, A.; Borthaku, R. A.; Rao, K.V.; Subrahmanyam, B. and Das, H. C. (1998). Combined effect of asphaltenes and flow improvers on the rheological behaviour of Indian waxy crude oil. *Fuel* 77, 1163 -1167.
- Chang C.; Nguyen Q. D. and Rønningsen H. P. (1999) Isothermal start-up of pipeline transporting waxy crude oil. *Journal of Non-Newtonian Fluid Mechanics*. 87 (1999) 127-154
- Chang, C.; Boger, D. V. and Nguyen Q. D. (2000). Influence of thermal history on the waxy structure of statically cooled waxy crude oil. *SPE Journal*. (2000) Vol. 5:148-157.
- Chang, C.; Boger, D. V. and Nguyen, Q. D. (1998). The yielding of waxy crude oils. *Industrial & Engineering Chemistry Research* 37, 1551-1559.
- Coto, B.; Martos, C.; Pena, J. L.; Espada, J. J. and Robustillo, M. D. (2008). A new method for the determination of wax precipitation from non-diluted crude oils by fractional precipitation. *Fuel*, 87, 2090-2094
- Davenport, T.C. and Somper, R.S.H. (1971). The yield value and breakdown of crude oil gels. *Journal of the Institute of Petroleum* 55,86-105.
- Escobedo, J. and Mansoori, G. A. (2010). Heavy-organic particle deposition from petroleum fluid flow in oil wells and pipelines. *Petroleum Science*, 7:502-508;
- Escobedo, J.; Mansoori, G. A.; Balderas-Joers, C.; Carranza-Becerra, L. J. and Mendez-Garcia, M. A. ( 1997). Heavy organic deposit during oil production from a hot deep reservoir: A field experience. *Proceeding of the 5<sup>th</sup> Latin America and Caribbean Society for Petroleum Engineering conference and Exhibition*, SPE Paper 38989, 9p, 1997
- Fasesan, S. O., and Adewunmi, O. O. (2003). Wax variation in some Nigerian oil wells in Delta Field. *Petroleum Science and Technology*, 21:91-111.

- Fawehinmi, A. (2007). Oil Companies' Corporate responsibility and sustainable infrastructure provision in the Niger Delta, *Petroleum Training Journal*, 4(1),22-29.
- Gateau, P.; Henaut, I.; Barre, L. and Argillier, J. F. (2004). Heavy oil dilution. *Oil and Gas Science and Technology Review IFP*, 59(5):503-9.
- Ghannam, M. T. and Esmail, N. (2006). Flow enhancement of medium-viscosity crude oil. *Journal of Petroleum Science and Technology*, 24(8):985-99.
- Ghannam, M. T. and Esmail, N. (1998) Rheological properties of carboxymethyl cellulose. *Journal of Applied Polymer Science*, 64(2):289-301.
- Ghannam, M. T. and Esmail, N. (2005) Yield stress behavior for crude oil-polymer emulsions. *Journal of Petroleum Science and Engineering*, 47:105-15.
- Guozhong, Z. and Gang, L. (2010). Study on the wax deposition of waxy crude in pipelines and its application. *Journal of Petroleum Science and Engineering*, 70, 1-9
- Hafiz, A. A. and Khidr, T. T. (2007). Hexa-triethanolamine oleate esters as pour point depressant for waxy crude oils. *Journal of Petroleum Science and Engineering*, 56, 296-302
- Hasan, S. W.; Ghannam, M. T. and Esmail, N. (2010). Heavy crude oil viscosity reduction and rheology for pipeline transportation. *Fuel*, 89 (2010) 1095-1100
- Hemant, P. S.; Kiranbala, A. and Bharambe D. P. (2008). Performance based designing of wax crystal growth inhibitors. *Energy and Fuels*, 22 (6), 3930-3938
- Holder, G.A. and Winkler, J. (1965) Wax crystallization from distillate fuels." Part 1 and 2 *Journal of Institute of Petroleum* 51(499), 238-252.
- Hussain, M.; Mansoori, G. A. and Ghotbi, S. (1999)Phase behavior prediction of petroleum fluids with minimum characterization data. *Journal of Petroleum Science and Engineering*, 22(1-3), 1999, 67-93
- IP The Institute of Petroleum, London, (1993b )
- Karan, K. Ratulowski, J. and German P. (2000). Measurement of waxy crude properties using novel laboratory techniques. SPE Annual conference and Exhibition, Dallas , Texas, 1-4, October 2000. SPE 62945
- Khan, M. R. (1996). Rheological properties of heavy oils and heavy oil emulsions, *Energy Source*, 18, 385-91.
- Langner, C. C. and Bass, R, M (2001). Method for enhancing the flow of heavy crude through subsea pipelines. US Patent 6264401
- Lopes-da-Silva, J. A. and Coutinho, J. A. P., (2004). Dynamic rheological analysis of the gelation behavior of waxy crude oils. *Rheol. Acta*, 43 (5) 433-441.
- Mansoori, G.A. (2009) A unified perspective on the phase behaviour of petroleum fluids, *Internaional Journal of Oil, Gas and Coal Technology*, Vol. 2, No. 2, pp.141-167.
- Martinez-Paloua, R.; Mosquirra, M. L.; Zapata-Rendonb, B.; Mar-Juarezc, E.; Bernal-Huicohead, C.; Clavel-Lopezoz, J. and Aburtob, J. (2011). Transportation of heavy and extra heavy crude oil by pipeline: A review. *Journal of Petroleum Science and Engineering*, 75 (3-4), 274-282
- Matveenko, V. N.; Kirsanov, E. A. and Remizov, S. V. (1995). Colloids and Surfaces A: Physicochemical and Engineering Aspects 101, 1-7.
- Oladiipo A., Bankole A. and Taiwo E (2009) Artificial Neural Network Modeling of Viscosity and Wax Deposition Potential of Nigerian Crude Oil and Gas

- Condensates. *33rd Annual SPE International Technical Conference and Exhibition in Abuja, Nigeria*, August 3-5, 2009. SPE 128600
- Philip, D. A.; Forsdyke, I. N.; McCracken I. R. and Ravenscroft P. D. (2011) Novel approach to waxy crude restart: Part 2: An investigation of flow events following shut down. *Journal of Petroleum Science and Engineering* 77(3-4), 286-304
- Remizov S. V., Kirsanov E. A. Matveenko N. V. (2000), *Colloids and Surfaces A. Physicochemical and Engineering Aspects* 175, 271-275
- Taiwo, E. A., Fasesan, S. O. and Akinyemi, O. P.(2009) Rheology of Doped Nigerian Niger-Delta Waxy Crude Oil. *Petroleum Science and Technology*, 27(13),1381 – 1393
- Wang J., Brower K. And Buckley J. (1999) Advances in observation of asphaltene destabilisation. *Proceeding of SPE on Oil field Chemistry*, Houston, Texas. February, 16-19, 1999. SPE Paper 50745
- Wang, K. S.; Wu, C. H.; Creek, J. L.; Shuler P. J. and Tang Y. (2003). Evaluation of effects of selected wax inhibitors on paraffin deposition. *Petroleum Science and Technology*. 21, 369-379

IntechOpen



### **Crude Oil Exploration in the World**

Edited by Prof. Mohamed Younes

ISBN 978-953-51-0379-0

Hard cover, 220 pages

**Publisher** InTech

**Published online** 16, March, 2012

**Published in print edition** March, 2012

"Crude Oil Exploration in the World" contains multidisciplinary chapters in the fields of prospection and exploration of crude oils all over the world in addition to environmental impact assessments, oil spills and marketing of crude oils.

### **How to reference**

In order to correctly reference this scholarly work, feel free to copy and paste the following:

Elijah Taiwo, John Otolorin and Tinuade Afolabi (2012). Crude Oil Transportation: Nigerian Niger Delta Waxy Crude, Crude Oil Exploration in the World, Prof. Mohamed Younes (Ed.), ISBN: 978-953-51-0379-0, InTech, Available from: <http://www.intechopen.com/books/crude-oil-exploration-in-the-world/crude-oil-transportation-nigerian-niger-delta-waxy-crude-oil>

**INTECH**  
open science | open minds

### **InTech Europe**

University Campus STeP Ri  
Slavka Krautzeka 83/A  
51000 Rijeka, Croatia  
Phone: +385 (51) 770 447  
Fax: +385 (51) 686 166  
[www.intechopen.com](http://www.intechopen.com)

### **InTech China**

Unit 405, Office Block, Hotel Equatorial Shanghai  
No.65, Yan An Road (West), Shanghai, 200040, China  
中国上海市延安西路65号上海国际贵都大饭店办公楼405单元  
Phone: +86-21-62489820  
Fax: +86-21-62489821

© 2012 The Author(s). Licensee IntechOpen. This is an open access article distributed under the terms of the [Creative Commons Attribution 3.0 License](https://creativecommons.org/licenses/by/3.0/), which permits unrestricted use, distribution, and reproduction in any medium, provided the original work is properly cited.

IntechOpen

IntechOpen