

We are IntechOpen, the world's leading publisher of Open Access books Built by scientists, for scientists

6,900

Open access books available

186,000

International authors and editors

200M

Downloads

Our authors are among the

154

Countries delivered to

TOP 1%

most cited scientists

12.2%

Contributors from top 500 universities



WEB OF SCIENCE™

Selection of our books indexed in the Book Citation Index
in Web of Science™ Core Collection (BKCI)

Interested in publishing with us?
Contact book.department@intechopen.com

Numbers displayed above are based on latest data collected.
For more information visit www.intechopen.com



Heterogeneous Nanostructured Electrode Materials for Lithium-Ion Batteries – Recent Trends and Developments

Xiangfeng Guan¹, Guangshe Li¹, Jing Zheng², Chuang Yu²,
Xiaomei Chen¹, Liping Li^{2*} and Zhengwei Fu¹

¹State Key Laboratory of Structural Chemistry and

²Key Laboratory of Optoelectronic Material Chemistry and Physics,

Fujian Institute of Research on the Structure of Matter,

Chinese Academy of Sciences, Fuzhou,

China

1. Introduction

Developing highly efficient, low cost, and environmentally benign energy storage devices and related materials is a key issue to meet the challenge of global warming, the finite nature of fossil fuels, and city pollution. Among the various available storage technologies, lithium-ion batteries (LIBs) currently represent the state-of-the-art technology in small rechargeable batteries because it can offer the largest energy density and output voltage of all known rechargeable battery technologies. A typical commercial lithium-ion battery consists of a negative electrode (anode, e.g., graphite) and a positive electrode (cathode, e.g., LiCoO_2), both of which are separated by a lithium-ion-conducting electrolyte. When the cell is charged, Li ions are extracted from the cathode, pass through the electrolyte, and are inserted into the anode. Discharge reverses the procedure. Although such batteries are commercially successful, these cells are still required to improve their performance to satisfy an increasing demand for portable and miniaturized electronics, uninterrupted power supplies for technological and rural needs, power tools, and even stationary storage batteries.

Since the recharging is completed with the lithium ion insertion/extraction process in both electrodes, the nature of two electrode materials is crucial to the performance improvement of batteries (Liang et al., 2009). At present, commercial batteries are mostly based on micrometer-size electrode materials, which are limited by their kinetics, lithium-ion intercalation capacities, and structural stability. The performance of currently available LIBs can only meet the requirements of applications to some degree (Guo et al., 2008). These have placed renewed demands on new and improved electrode materials for LIBs with a high energy density, high power density, longer cycle life, and improved safety.

Nanostructured approaches have been recently demonstrated to be highly effective in greatly improving the electrochemical performance of electrode materials. For instances, nanostructured materials decrease the diffusion length of lithium ion in the insertion/extraction process, which results in the higher capacities at high charge/discharge

rates. Nanostructured materials can also increase the surface/interface storage due to the high contact between electrode material and electrolyte. Additionally, nanostructured materials can buffer the stresses caused by the volume variation occurring during the charge/discharge process, alleviating the problem of capacity fade and poor rate capability associated with the material breaking away into the electrolyte. However, nanostructured materials, especially single-phased nanostructured materials, are not an ultimate solution to meet the requirements of future LIBs. One of the primary reasons is that some of the intrinsic material properties of bulk phase, such as low conductivities, low energy densities at high charge/discharge rates, and weak mechanical stabilities, cannot be simply altered or improved by just transforming them into nanostructured materials (Liu et al., 2011). Moreover, without some surface protection, nanostructured materials may magnify the safety issues due to a high surface reactivity and may aggravate capacity fade due to aggregation.

Recently, heterogeneous nanostructured approaches have been introduced to overcome the above mentioned limitations when using single component nanostructured electrode materials. The heterogeneous nanostructured materials are composed of multi-nanocomponents, each of which is tailored to address a different demand (e.g. high lithium-ion/electrical conductivity, high capacity, and excellent structural stability) (Liu et al., 2011). There exists a synergistic effect by the interplay between particle shape, properties, and possible association of the individual components, which can be regulated to explore the full potential of the materials in terms of the performance (e.g. high energy density, high power density, longer cycle life, and improved safety). For instances, concentration-gradient core-shell nanostructured cathode material composed of $\text{Li}[\text{Ni}_{0.8}\text{Co}_{0.1}\text{Mn}_{0.1}]\text{O}_2$ and $\text{Li}[\text{Ni}_{0.46}\text{Co}_{0.23}\text{Mn}_{0.31}]\text{O}_2$ have been reported to exhibit a very high reversible capacity, excellent cycling, and safety characteristics, which are attributed to the synergic effects of core and shell components (Sun et al., 2009). Novel nanonet constructed by SnO_2 nanoparticles and ploy (ethylene glycol) chains has been prepared. The synergic properties and functionalities of both materials enable this composite material to exhibit unexpectedly high lithium storage over the theoretical capacity of SnO_2 (Xiong et al., 2011). Graphene anchored with Co_3O_4 nanoparticles have been synthesized and utilized as anode materials, which exhibits a large reversible capacity, excellent cyclic performance, high Coulombic efficiency, and good rate capability due to a strong synergic effect between Co_3O_4 nanoparticles and graphene nanosheet (Wu et al., 2010).

Therefore, developing the heterogeneous nanostructured electrode materials is considered to be the most promising avenue towards future LIBs with high energy density, high power density, longer cycle life, and improved safety. Even so, it is necessary first of all to know how heterogeneous nanostructured materials have impacts on the performance of the LIBs and what kinds of synergic effects these materials exhibit. In this chapter, we focus on the recent trends and developments of heterogeneous nanostructured electrode materials for uses in LIBs and provide an overview of the synthesis, synergic mechanism of heterogeneous nanostructured components, and a survey of promising candidates based on heterogeneous nanostructured materials for LIBs.

2. Heterogeneous nanostructured cathode materials

Heterogeneous nanostructured cathode materials are of great interest for LIBs because of the synergic properties arising from the integrated multi-nanocomponents, each of which is

tailored to address a different demand like high lithium-ion/electrical conductivity, high capacity, and excellent structural stability. In this section, we describe these heterogeneous cathode nanomaterials based on the type of void spaces available for lithium ion insertion: one-dimensional, two-dimensional, and three-dimensional transition-metal-oxide-based nanocomposites (Figure 1).

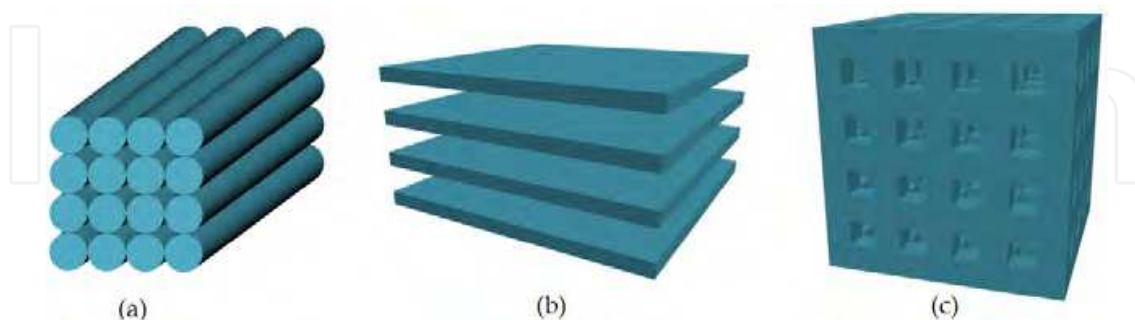


Fig. 1. Schematic representation of void spaces in a) one-dimensional, b) two-dimensional, and c) three-dimensional transition-metal-based oxides. (Redrawn from Ref.(Winter et al., 1998))

2.1 One-dimensional cathode nanocomposites

Since the first report by Padhi et al. (1997) on reversible electrochemical lithium insertion-extraction in LiFePO_4 , olivine structured lithium transition metal phosphates, LiMPO_4 ($M = \text{Fe, Mn, Co, Ni}$), have attracted much attention as the promising candidate cathode materials for LIBs. As shown in Figure 2, the structure of LiMPO_4 consists of a distorted hexagonal close-packed (hcp) oxygen framework with 1/8 of the tetrahedral holes occupied by P, and 1/2 of the octahedral holes occupied by various metal atoms (Li and M).

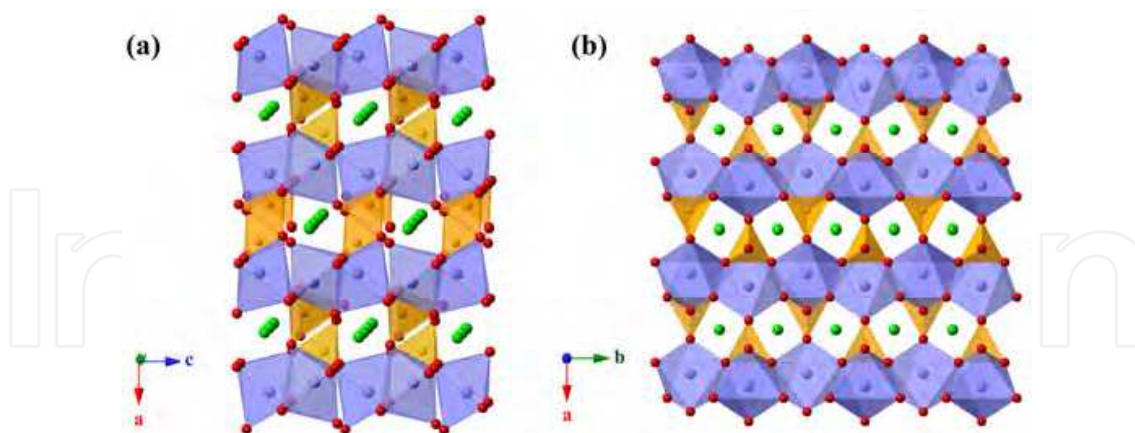


Fig. 2. Polyhedral representation of the structure of LiMPO_4 (space group $Pnma$) viewed a) along b -axis and b) along c -axis. MO_6 octahedra are shown in blue, phosphate tetrahedra in yellow, and lithium ions in green.

Crystalline LiMPO_4 has an orthorhombic unit cell (space group $Pmnb$). Layers of MO_6 octahedra are corner-shared in the bc plane and linear chains of LiO_6 octahedra are edge shared in a direction parallel to the b -axis. These chains are bridged by edge and corner shared phosphate tetrahedra, creating a stable crystal structure (Ellis et al., 2010). Because

oxygen atoms are strongly bonded by both M and P atoms, the structure of LiMPO_4 is stable at high temperatures. The high lattice stability guarantees an excellent cyclic performance and operation safety for LiMPO_4 . However, the strong covalent oxygen bonds lead to a low ionic diffusivity and poor electronic conductivity. Additionally, the Li diffusion in LiMPO_4 is widely believed to be one dimensional along the b -axis, as shown in Figure 3. These limit the high rate performance of olivine LiMPO_4 . In this family compounds, lithium iron phosphate (LiFePO_4) and lithium manganese phosphate (LiMnPO_4) are more promising because they operate at 3.4–4.1 V versus Li/Li^+ , which is not so high as to decompose the organic electrolyte but is not so low as to scarify the energy density.

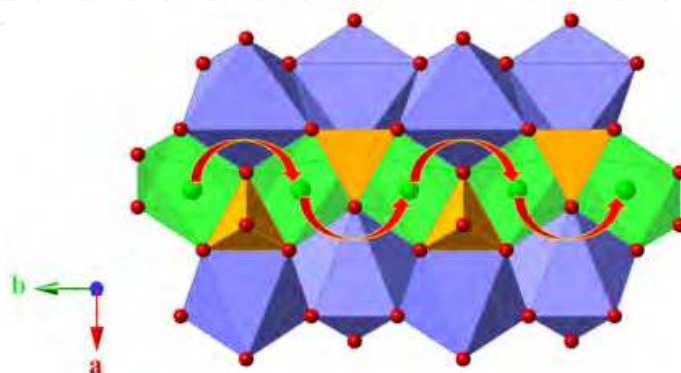


Fig. 3. Structure of LiMPO_4 that depicts the curved trajectory of Li ion transport along b -axis, shown with red arrows. The colour scheme is the same as that in Figure 2. (Redrawn from Ref. (Ellis et al., 2010))

2.1.1 LiFePO_4

LiFePO_4 is one of the most promising cathode materials because of its high operating voltage (~ 3.5 V vs. Li/Li^+) and large theoretical gravimetric capacity (~ 170 mAh/g), as well as its low cost, environmental friendliness, particularly high thermal stability, and strong overcharge tolerance as compared to other cathode materials. One impediment to the wider use of LiFePO_4 , however, is its low lithium ion conductivity (lithium ion diffusion coefficient (DLi) is 10^{-14} cm^2s^{-1}) and electrical conductivity (10^{-9} Scm^{-1}). The slow lithium diffusion can be addressed by decreasing the particle dimensions to nanometer scale to reduce the diffusion paths. To overcome the low electronic conductivity, many conductive agents such as carbonaceous materials and polymers have been reported to extend the performance of LiFePO_4 .

2.1.1.1 Carbonaceous materials

Carbonaceous materials such as amorphous carbon, carbon nanotube, and graphene have been used to form composites with LiFePO_4 to improve the electronic conductivity of electrodes. Amorphous carbon coating is one of the most important techniques used to improve the specific capacity, rate performance, and cycling life of LiFePO_4 . The main role of amorphous carbon coating is to enhance the surface electronic conductivity of LiFePO_4 particles so that the active materials can be fully utilized at high current rates. The beneficial effects of carbon coating have been shown to be strongly related to the morphology. For example, Wang et al. (2008) coated LiFePO_4 nanoparticles with a carbon shell by in situ polymerization. As shown in Figure 4, these composites are composed of 20–40 nm LiFePO_4

nanoparticles covered with 1–2 nm thick carbon shells. The LiFePO_4/C composite delivered a discharge capacity of 169 mAh/g at a 0.6 C rate, which is extremely closer to the theoretical value of 170 mAh/g for LiFePO_4 . Even at a high discharge rate of 60 C, it still delivered a respectable specific capacity of 90 mAh/g. The composite also exhibits an excellent cycling performance, with less than 5% discharge capacity loss over 1100 cycles. These authors have proposed that an ideal core-shell network of LiFePO_4/C composites should contain nano-size LiFePO_4 particles completely coated with a thin layer of porous conductive carbon, which serves as the electron pathway and porous nature that allow lithium ions to diffuse through.

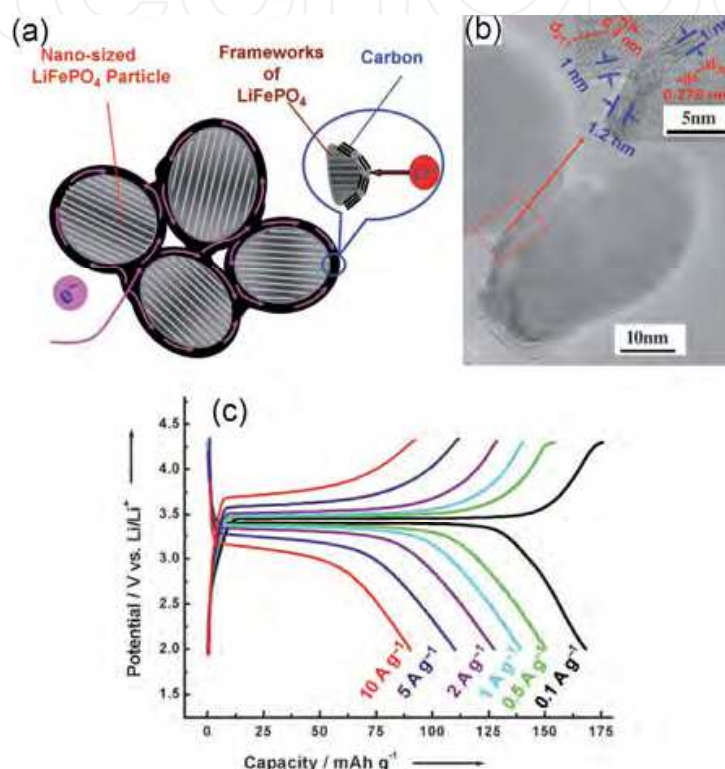


Fig. 4. a) Designed ideal structure for LiFePO_4 particles with nano-sizes and a complete carbon coating, b) a typical TEM image for some LiFePO_4/C primary particles, c) charge/discharge tests for $\text{LiFePO}_4/\text{carbon}$ composites at different current densities in a potential window of 2.0–4.3 V (vs. Li/Li^+) (Wang et al., 2008).

In-situ formed amorphous carbon coating layer can not only reduce the particle size of LiFePO_4 by inhibiting particle growth during the sintering (Huang et al., 2001), but also act as a reducing agent to suppress the oxidation from Fe^{2+} to Fe^{3+} during the sintering and thus simplify the atmosphere requirement in synthesis (Pent et al., 2011).

The beneficial effect of carbon coating has also been observed to depend on the uniformity, thickness, loading, and precursor of the coating. For instance, Konarova et al. (2008) prepared LiFePO_4/C composites with different amounts of carbon by ultrasonic spray pyrolysis followed by a heat treatment. They have found that the discharge capacity is strongly affected by the amount of carbon residue and sintering temperature. After optimization, LiFePO_4/C composites with 1.87 wt % of carbon exhibited a best electrochemical performance with capacities of 140 mAh/g at C/10 and 84 mAh/g at 5 C.

Vu et al. (2011) synthesized monolithic, three-dimensionally ordered macroporous and meso-/microporous (3DOM/m) LiFePO_4/C composite cathodes by a multiconstituent, dual templating method. In this composite, LiFePO_4 is dispersed in a carbon phase around an interconnected network of ordered macropores. The carbon phase enhances the electrical conductivity of the cathode and maintains LiFePO_4 as a highly dispersed phase during the synthesis and even the electrochemical cycling. The capacity of the composites is as high as 150 mAh/g at a rate of C/5, 123 mAh/g at 1 C, 78 mAh/g at 8 C, and 64 mAh/g at 16 C, showing no capacity fading over 100 cycles.

Carbon nanotubes (CNT) and graphene have advantages of high conductivity, nanotexture, and resiliency, which are very beneficial for LIBs, and therefore have been introduced to improve the electrochemical performances of LiFePO_4 cathodes. For example, recently, Zhou et al. (2010) synthesized hierarchically structured composites based on porous LiFePO_4 with CNT networks. Porous LiFePO_4 -CNT composites were synthesized via a facile in-situ sol-gel method, where the carbon nanotubes were functionalized using a mixed acid method to ensure an uniform dispersion into the aqueous sol. As shown in Figure 5, $\text{LiFePO}_4/\text{CNT}$ composites showed a significantly improved specific capacity and rate performance in comparison to the unmodified porous LiFePO_4 . This performance enhancement is attributed to an improved electrochemical accessibility and a decrease in inert “dead” zones provided by the interpenetrating conductive CNT networks present in the composite structure.

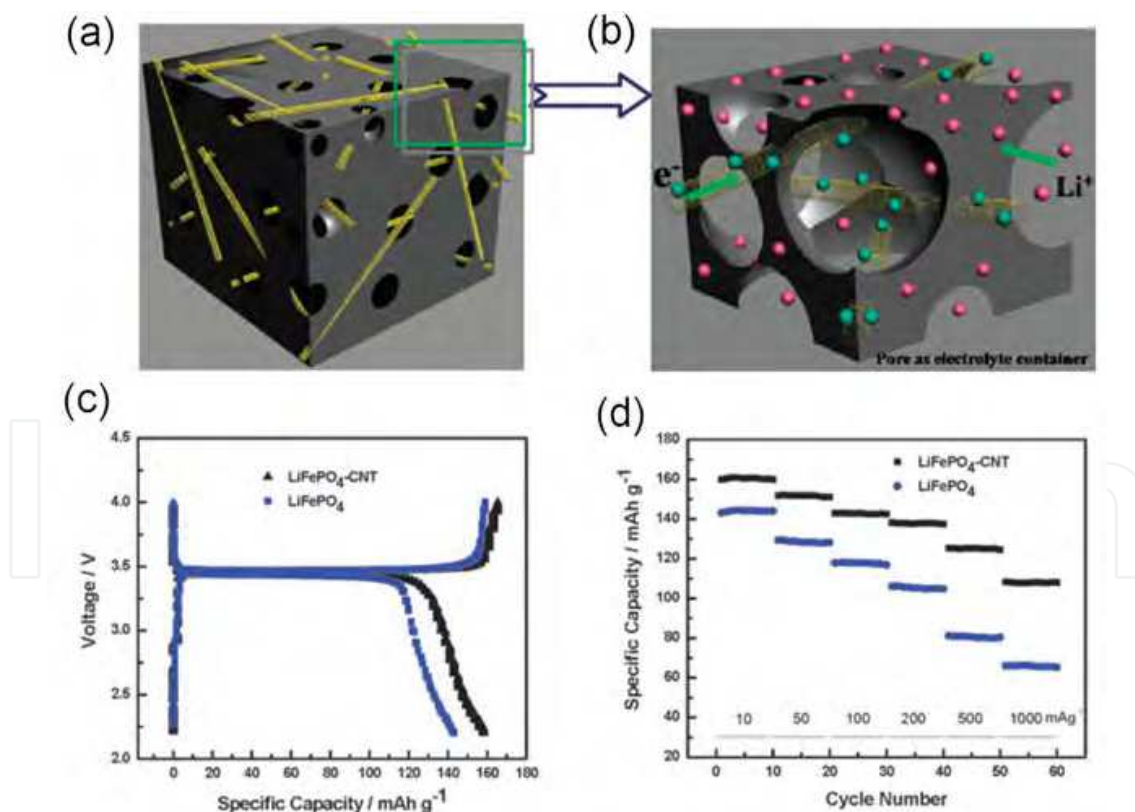


Fig. 5. a) Schematic illustrations of porous LiFePO_4 -CNT composite, b) an enlarged zone from (a), showing the corresponding electron transport and ion diffusion mechanisms, c) charge/discharge profiles; and d) rate performance of porous LiFePO_4 (blue) and LiFePO_4 -CNT composite (black). (Zhou et al., 2010)

More recently, Zhou et al. (2011) synthesized graphene-modified LiFePO_4 composites with LiFePO_4 nanoparticles and graphene oxide nanosheets by spray-drying and annealing processes. As indicated in Figure 6, the LiFePO_4 primary nanoparticles embedded in micro-sized spherical secondary particles were wrapped homogeneously and loosely with a graphene 3D network. Such a special nanostructure facilitates the electron migration throughout the secondary particles, while the presence of abundant voids between the LiFePO_4 nanoparticles and graphene sheets is beneficial for Li^+ diffusion. The composite cathode material could deliver a capacity of 70 mAh/g at 60 C discharge rate and showed a capacity decay rate of <15% when cycled under 10 C charging and 20 C discharging for 1000 times.

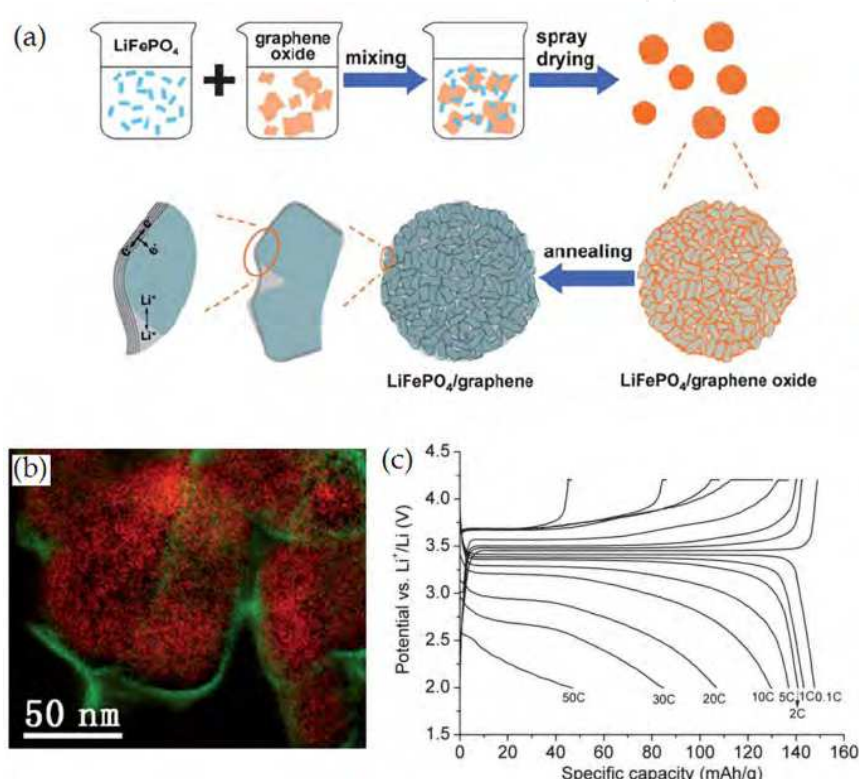


Fig. 6. a) Illustration of the preparation process and microscale structure of LiFePO_4 /graphene composites; b) the corresponding elemental map of the same area showing graphene-sheets wrapped on LiFePO_4 nanoparticles, where red represents the LiFePO_4 nanoparticles, and the green represents graphene sheets; and c) rate discharge curves of LiFePO_4 /graphene composite. (Zhou et al., 2011)

Though carbonaceous materials have showed some positive effects in improving the electrochemical performance of LiFePO_4 cathode, higher conductive carbon loading also needs more binder which generally reduces the energy density of the cells. Therefore, the influence of particle size, loading content, and mixing procedure of conductive carbonaceous materials on the performance of battery cells needs further attentions.

2.1.1.2 Polymers

Polymers have been proven to be an effective substance to improve the electrochemical properties of LiFePO_4 when forming composites with LiFePO_4 . Huang and Goodenough

(2008) proposed a strategy of substituting the inactive carbon and Teflon (PTFE) binder with an electrochemically active polymer like polypyrrole (PPy) or polyaniline (PANI) to enhance the electrochemical performance of LiFePO_4 . Significantly improved capacity and rate capability are achieved in such LiFePO_4 /polymer composite cathodes, because polymers can increase the specific capacity and rate capability and lower the overpotential at high discharge rates. Recent work reported by Chen et al. (2011) also indicates that PANI can serve as a binder to make the carbon-coated LiFePO_4 (C-LFP) electrode surface smoother to endure a long cycling. In their work, they modified C-LFP with PANI: C-LFP was synthesized via a solid state reaction, whereas PANI was formed in situ by chemical oxidative polymerization of aniline with ammonium persulfate as an oxidizer to achieve the C-LFP/PANI composites. Specific capacities as high as 165 mAh/g at 0.2 C, 133 mAh/g at 7 C, and 123 mAh/g at 10 C are obtained in C-LFP/7 wt.% PANI composite.

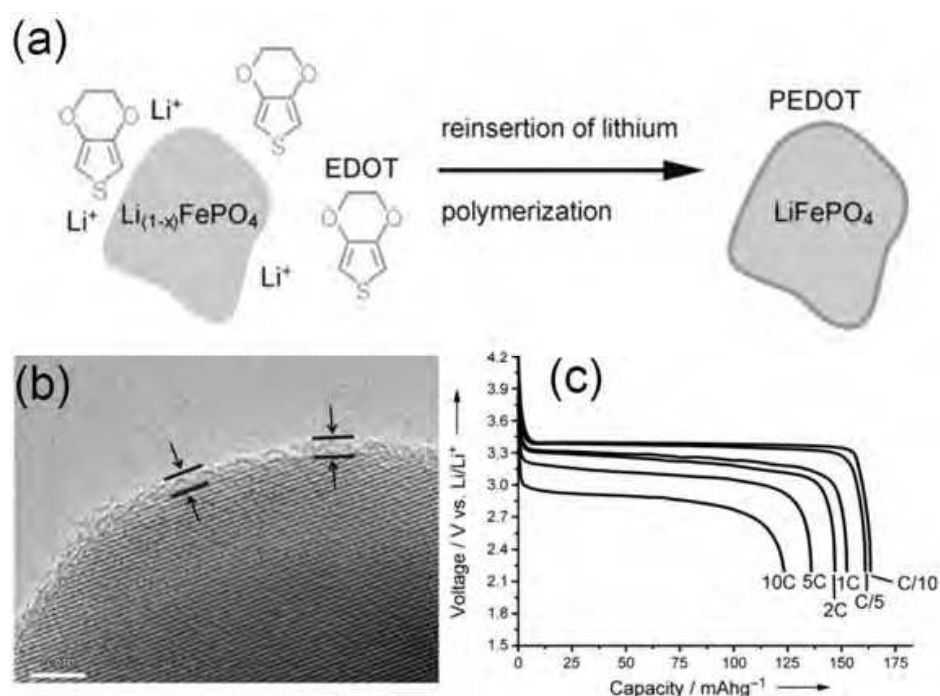


Fig. 7. a) Polymerization reaction. The reinsertion of lithium into $\text{Li}_{1-x}\text{FePO}_4$ leads to the oxidation of EDOT deposited on the solid surface as a conducting polymer PEDOT; b) TEM of PEDOT- LiFePO_4 ; and c) discharge curves of PEDOT/ LiFePO_4 /PVDF 5.9 : 86.6 : 7.5 in wt.%. (Charge conditions are 2.2–4.2 V, versus Li^+/Li). (Lepage et al., 2011)

Other means have also been used to synthesize polymer/ LiFePO_4 composites, including electropolymerization from a suspension of LiFePO_4 particles (Boyano et al., 2010), polymerization using a chemical oxidant in the presence of the particle (Wang et al., 2005), or formation of a colloidal suspension of the polymer immediately before the introduction of LiFePO_4 particles (Murugan et al., 2008). However, coating LiFePO_4 with homogeneous polymer thin layer is still very difficult. This problem can possibly be solved by the soft chemistry approach reported by Lepage et al. (2011), which relies on the intrinsic oxidation power of $\text{Li}_{1-x}\text{FePO}_4$ rather than on an external oxidant as the driving force for the polymerization process, as shown in Figure 7a. The polymerization propagation requires the reinsertion of lithium into the partially delithiated LiFePO_4 , as well as the transport of Li^+ ions and electrons through the deposited polymer coating like PEDOT. In the resultant

PEDOT/LiFePO₄, a very thin PEDOT layer is homogeneously covered on surface of LiFePO₄ nanoparticles (Figure 7b). PEDOT/LiFePO₄ shows a capacity of 163 mAh/g at C/10, which is similar to the theoretical capacity of 170 mAh/g for LiFePO₄. At higher rates of discharge, more specifically at 10 C (at constant current for a discharge in 6 min), the capacity is 123 mAh/g, approximately 70% of the theoretical capacity.

2.1.2 LiMnPO₄

Encouraged by the success of LiFePO₄, much research is now focused on the olivine LiMPO₄ (M=Mn, Co, and Ni) structures. Among them, LiMnPO₄ is of particular interest as it offers a higher potential of 4.1 V vs Li⁺/Li compared to 3.4 V vs Li⁺/Li of LiFePO₄, the expected safety features, and abundant resources. Hence, LiMnPO₄ can be an ideal cathode material. Unfortunately, besides a low ionic conductivity ($D_{\text{Li}} < 10^{-14} \text{ cm}^2\text{s}^{-1}$), LiMnPO₄ also shows an electronic conductivity of $< 10^{-10} \text{ Scm}^{-1}$ much lower than that of LiFePO₄ (i.e., $1.8 \times 10^{-9} \text{ Scm}^{-1}$ at 25 °C), rendering it difficult to obtain decent electrochemical activity. Similar to the LiFePO₄ electrode, a leading approach to improve the performance of LiMnPO₄ cathode materials is to use nanosized particles and a carbon coating. For instances, Drezen et al. (2007) synthesized LiMnPO₄ (140~200 nm) using a sol-gel method followed by carbon coating through a dry ball milling. The LiMnPO₄/C nanocomposites could deliver reversible capacities of 156 and 134 mAh/g at C/100 and C/10, respectively. At faster charging rates, the electrochemical performance was further improved when smaller LiMnPO₄ particles were used. Martha et al. (2009) synthesized LiMnPO₄/C nanocomposites with a polyol method followed by ball-milling. The nanocomposites were composed of 25-30 nm platelet-like LiMnPO₄ particles covered by a carbon film about 15 nm thick. The LiMnPO₄/C cathode showed a good rate capability and delivered a practical capacity of 140 mAh/g and 120 mAh/g at 0.1 C and 0.5 C, respectively.

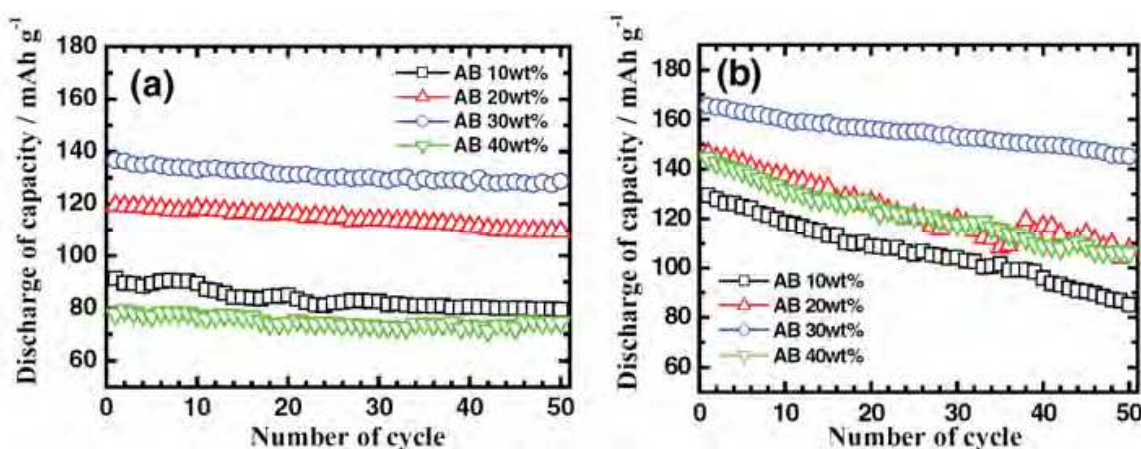


Fig. 8. Cycling stability of Li/C-LiMnPO₄ cells with different amounts of acetylene black at 0.5 C rate: a) cycled at 25 °C and b) cycled at 55 °C. The cell was charged at a constant current rate of C/20 to 4.5 V and kept at 4.5 V until C/100. (Oh et al., 2010)

Recently, Baknev et al. (2010) prepared a LiMnPO₄/C composite cathode by a combination of spray pyrolysis and a wet ball milling. The composite cathode delivered discharge capacities of 153 mAh/g at 0.05 C and 149 mAh/g at 0.1 C at room temperature and exhibited initial discharge capacities of 132 and 80 mAh/g at 1 and 5 C at 50 °C. These

authors also demonstrated that particle size and homogeneity of the carbon distribution are critical in determining the reversible capacity and rate capability of LiMnPO_4 . More recently, Oh et al. (2010) prepared nanostructured C- LiMnPO_4 powders by ultrasonic spray pyrolysis followed by a ball milling and found that the content of acetylene black (AB) carbon has a great influence on the electrochemical properties of the C- LiMnPO_4 nanocomposites. As shown in Figure 8, when AB carbon content is 30 wt%, the C- LiMnPO_4 composites exhibited a best electrochemical performance, delivering discharge capacities of 158 mAh/g and 107 mAh/g at rates of 1/20 C and 2 C, respectively. Additionally, the capacity retention of the 30 wt% AB electrode after 50 cycles was 94.2% at 25 °C and 87.7% at 55 °C, with its initial capacity at 0.5 C rate being 137 mAh/g and 166 mAh/g, respectively. While, an excessive amount of carbon causes the carbon particles to segregate and decreases the electrochemical properties of the C- LiMnPO_4 .

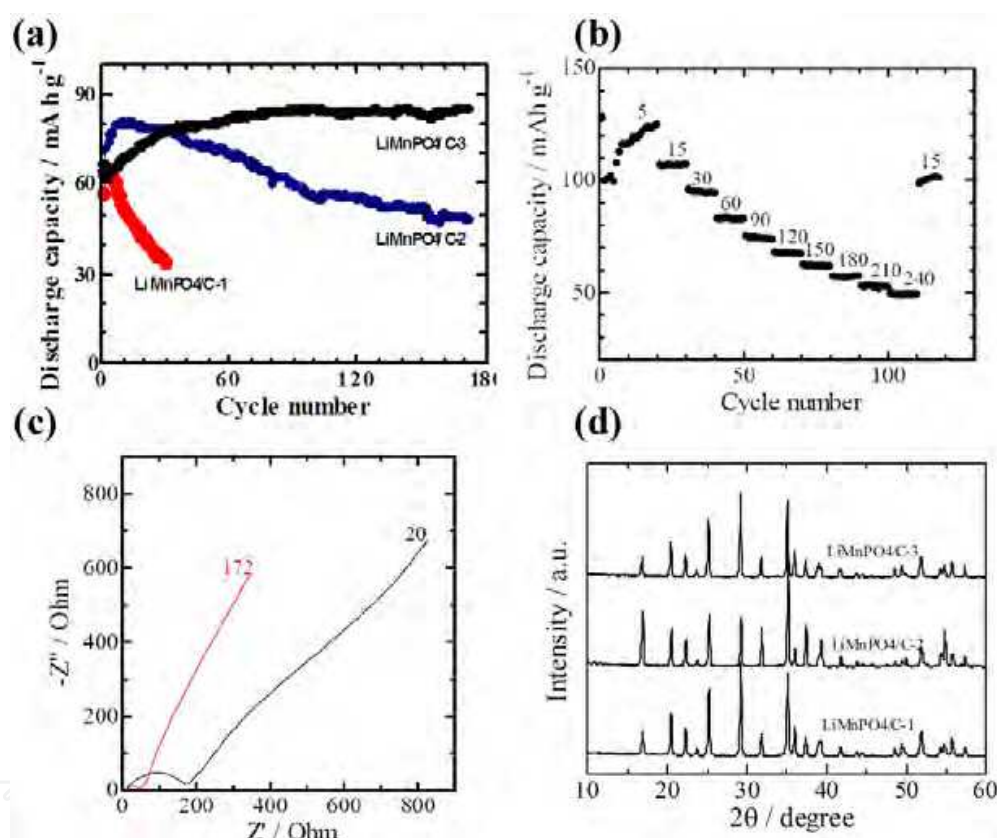


Fig. 9. a) Cycle performances of the samples; b) discharge capacity of $\text{LiMnPO}_4/\text{C}-3$ at different current densities; c) impedance results of $\text{LiMnPO}_4/\text{C}-3$ after 20 and 172 cycles; and d) XRD patterns of the samples.

In our recent experiments, we have found that the procedures of mixing and annealing treatments significantly affect the electrochemical performance of LiMnPO_4/C cathode. We prepared LiMnPO_4 nanoparticles by a hydrothermal method, the same as the method described by our previous work (Fang et al., 2007) except that LiOH was used as pH modifier instead of $\text{NH}_3 \cdot \text{H}_2\text{O}$. Then, the LiMnPO_4/C composites were synthesized by three ways: (1) hydrothermally synthesized LiMnPO_4 was milled with 20 wt% of carbon black for 4 h to obtain carbon- LiMnPO_4 composites, named as $\text{LiMnPO}_4/\text{C}-1$; (2) hydrothermally synthesized LiMnPO_4 was milled with 20 wt% of carbon black for 4h and

followed by annealing at 700 °C for 2 h in N₂. The obtained composites were ball-milled for 4 h again to obtain carbon-LiMnPO₄ composites, named as LiMnPO₄/C-2; (3) hydrothermally synthesized LiMnPO₄ was milled with 20 wt% of carbon black for 4h and followed by annealing at 700 °C for 2 h in N₂ to obtain LiMnPO₄/C-3. As indicated by Figure 9a, among three samples, LiMnPO₄/C-3 exhibited the best electrochemical properties, which delivered a discharge capacity of 80 mAh/g after 180 cycles at a current density of 30 mA/g. LiMnPO₄/C-3 also showed an excellent capacity retention at different charge/discharge current density (Figure 9b). The excellent electrochemical performance of LiMnPO₄/C-3 may result from the decreased internal impedance during the charge/discharge cyclings, as shown in Figure 9c. In order to study the influence of different synthetic procedures on crystallinity of LiMnPO₄/C, the samples were characterized by X-ray diffraction (XRD). As shown in Figure 9d, LiMnPO₄/C-1 and LiMnPO₄/C-2 showed a broad noncrystalline peaks in the diffraction range of 15~40°, which is not observed in LiMnPO₄/C-3. It indicates that LiMnPO₄/C-3 shows a highest crystallinity. Therefore, annealing in N₂ could effectively reduce the surface defects as produced by ball-milling and improve the crystallinity, which may result in a higher discharge capacity and enhance the electrode stability through suppressing the internal impedance of the electrode from increasing. Similar phenomenon has also been observed in other cathodes (Dimesso et al., 2011). Therefore, the influence of particle size, loading content, mixing procedure of conductive carbons on the performance of battery cells needs further detailed investigations.

2.2 Two-dimensional cathode nanocomposites

Layered-type transition metal oxides (LiMO₂, M = V, Mn, Fe, Co, and Ni) is an important two-dimensional insertion compound for cathode materials. It adopts the α-NaFeO₂-type structure, which can be regarded as a distorted rock salt superstructure, as shown in Figure 10. In a cubic close-packed oxygen array, lithium and transition-metal atoms are distributed in the octahedral interstitial sites. MO₂ layers are formed consisting of edge-sharing [MO₆] octahedra. In between these MO₂ layers, lithium resides in octahedral [LiO₆] coordination, leading to the alternating planes (111) of the cubic rock-salt structure. (Winter et al, 1998).

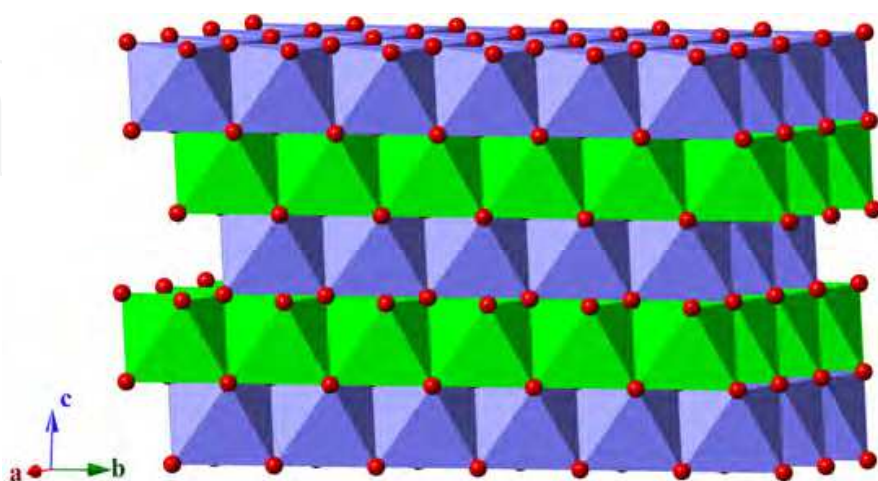


Fig. 10. Two-dimensional crystal structure of LiMO₂ (M = Ni, Co, V) of α-NaFeO₂-type. MO₆ octahedra are shown in blue, LiO₆ octahedra in green, and oxygen ions in red.

Among the above-mentioned isostructural dioxides, particularly lithium cobalt oxide (LiCoO_2) and mixed manganese-nickel-cobalt dioxide ($\text{Li}(\text{Mn}, \text{Ni}, \text{Co})\text{O}_2$) have gained an industrial importance as the electrode materials.

2.2.1 LiCoO_2

LiCoO_2 is the most widely used cathode materials in commercial LIBs owing to its favourable electrochemical attributes, including a good capacity retention, favourable rate capability, and high structural reversibility below 4.2 V vs. Li/Li^+ . Layered Li_xCoO_2 materials are typically charged up to 4.2 V ($0.5 < x < 1$) because further increase in the charge cut-off voltage results in a phase transition from monoclinic to hexagonal. The phase transition leads to an anisotropic volume change of the host lattice, which causes a structural degradation and large capacity fade during the repeated cyclings. In addition, the dissolution of Co^{4+} when $x > 0.5$ is also attributed to the degradation of LiCoO_2 . Therefore, the specific capacity of this type of material is limited to the range of 137 to 140 mAh/g, although the theoretical capacity of LiCoO_2 is 273 mAh/g (Wang et al., 2008). In this regard, great efforts have been made to increase the specific capacity of LiCoO_2 and improve the capacity retention. The construction of heterogeneous nanostructure by coating the chemically stable compounds on the surface of LiCoO_2 is the most effective strategy to improve the electrochemical performance of LiCoO_2 at high cut-off voltage. There has been extensively research by coating LiCoO_2 material with various metal oxides, metal phosphates, and other chemically stable compounds.

2.2.1.1 Metal oxide

Various metal oxide coatings such as Al_2O_3 (Oh et al., 2010), CeO_2 (Ha et al., 2006), ZrO_2 (Liu et al., 2010), $\text{Li}_4\text{Ti}_5\text{O}_{12}$ (Yi et al., 2011), etc., have been studied. These metal oxides behave as an effective physical protection barrier to prohibit the chemical reactions between the electrolyte and LiCoO_2 cathode. They also prevent the structural degradation of LiCoO_2 during the cyclings. Therefore, both the cycle life and rate capability of LiCoO_2 cathode were improved by coating these oxides. Interestingly, some of them such as Al_2O_3 and ZnO can act as HF scavenger to reduce the acidity of non-aqueous electrolyte, suppressing metal dissolution from the LiCoO_2 materials. It is well known that LiPF_6 , the dominant lithium salt for LIBs, is sensitive to trace of moisture. HF is formed when LiPF_6 decomposes in the presence of moisture, which can result in the dissolution of the transition metal and surface corrosion of cathode materials (Zhou et al. 2005). For example, Al_2O_3 and ZnO can react with a trace amount of HF in the electrolyte to reduce the active concentration of HF by the formation of AlF_3 and ZnF_2 , suppressing Co dissolution and F- concentration in the electrolyte. In general, excess coating leads to a loss of rate or power capability. Therefore, control over the thickness of coating materials is very important. Recently, Scott et al (2011) modified LiCoO_2 with coating ultrathin Al_2O_3 film as a surface protective layer by atomic layer deposition (ALD) technique. The conformal $\sim 1\text{-}2$ nm thick film which has clearly different lattice fringes from those in the bulk region is clearly observed for Al_2O_3 coated LiCoO_2 (see Figure 11a). The coated nano- LiCoO_2 electrodes with 2 ALD cycles deliver a discharge capacity of 133 mAh/g with a currents of 1400 mA/g (7.8 C), corresponding to a 250% improvement in reversible capacity compared to the uncoated LiCoO_2 , as shown in Figure 11b. The simple ALD process is broadly applicable and provides new opportunities for the battery industry to design other novel nanostructured electrodes that are highly durable even while cycling at high rate.

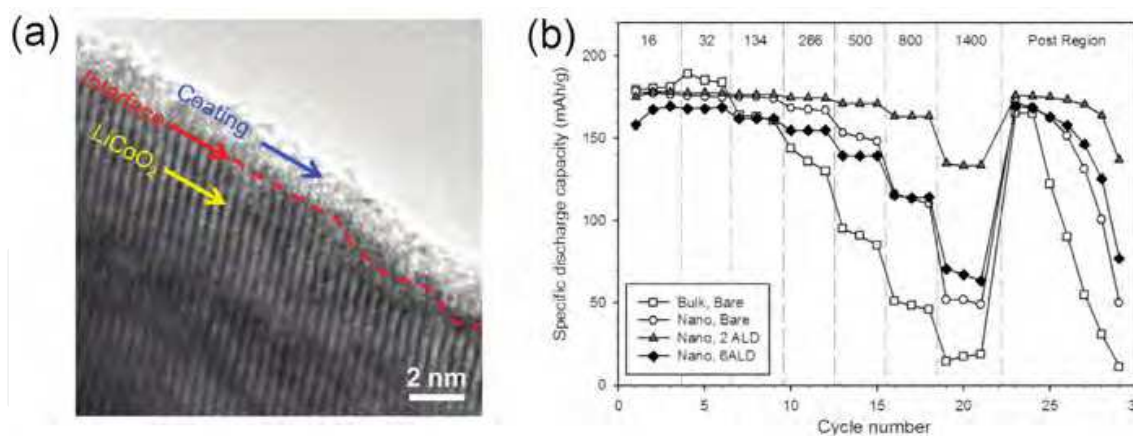


Fig. 11. a) HR-TEM images of the Al_2O_3 -coated LiCoO_2 nanoparticles by 6 ALD cycles on the bare powders; and b) variations in discharge capacities versus charge/discharge cycle number for different LiCoO_2 electrodes cycled at different rates between 3.3 and 4.5 V (vs Li/Li^+) at room temperature. Current densities (mA/g) are indicated at the top. (Scott et al., 2011)

2.2.1.2 Metal phosphates

AlPO_4 and LiFePO_4 have been reported as an effective coating material for improving the electrochemical properties of LiCoO_2 . AlPO_4 can be coated on LiCoO_2 by direct dispersing LiCoO_2 in AlPO_4 precursors and followed by annealing at elevated temperatures. AlPO_4 coating can behave as a protective layer to prohibit the chemical reactions between the electrolyte and LiCoO_2 , suppressing Co dissolution and the lattice distortion during cycling with a charge cut-off voltage of 4.6V. The crystallinity of the AlPO_4 -coating layer and the inter-diffusion at the interface can affect the electrochemical properties of the AlPO_4 -coated LiCoO_2 (Kim et al. 2006). The same group also reported that different phases of AlPO_4 have great influences on the electrochemical properties of LiCoO_2 . They coated LiCoO_2 with three types of AlPO_4 phase, i.e., amorphous, tridymite, and cristobalite phases, by spin coating method. The LiCoO_2 thin film coated with amorphous nanoparticles showed the best cycle-life performance by effectively suppressing the degradation of Li^+ -diffusion kinetics (Kim et al., 2007). Wang et al. (2007) modified LiCoO_2 using LiFePO_4 coating with a thickness ranging 10–100 nm by impregnation method. The coating of LiFePO_4 serves as both the protecting layer and the active cathode material with good conductivity. The LiFePO_4 -coated LiCoO_2 exhibited an improved electrochemical performance during the charge/discharge cycles, especially at high potentials and high temperature. For example, at 60 °C and at a rate of 1 C, 5.0 wt.% LiFePO_4 -coated LiCoO_2 cathodes showed a better capacity retention (132 mAh/g) with a 4.2 V charge-cutoff after 250 cycles, while the uncoated LiCoO_2 cathode showed 5% capacity retention under the same conditions after only 150 cycles.

2.2.1.3 Other chemically stable compounds

Highly ionic conductive solid electrolytes have been used as the protective layer of LiCoO_2 . Recently, Choi et al. (2010) modified the surfaces of LiCoO_2 with a lithium phosphorus oxynitride (LiPON) glass-electrolyte thin film. Homogeneous LiPON thin films with 0.5–0.7 μm in thickness were deposited on the surfaces of LiCoO_2 by a radio frequency (RF) magnetron sputtering method. They found that the LiPON coating improved the rate capability and the thermal stability of the charged LiCoO_2 cathode. The ion conducting

LiPON film enhances the lithium-ion migration through the interface between the surface of LiCoO_2 particles and the electrolyte, suppressing the surface reaction between the electrode surface and electrolyte during cyclings.

2.2.2 $\text{Li}(\text{Mn}, \text{Ni}, \text{Co})\text{O}_2$

Metals Mn, Ni, and Co can all be accommodated in the layered metal oxide structure, giving a range of compositions $\text{Li}[\text{Mn}_x\text{Ni}_y\text{Co}_z]\text{O}_2$ ($x + y + z = 1$). A solution of $\text{Li}[\text{Mn}_x\text{Ni}_y\text{Co}_z]\text{O}_2$ may possess improved performances, such as thermal stability due to the synergetic effect of three ions. Recently, intense efforts have been directed towards the development of $\text{Li}[\text{Mn}_x\text{Ni}_y\text{Co}_z]\text{O}_2$ as a possible replacement for LiCoO_2 . However, layered $\text{Li}[\text{Mn}_x\text{Ni}_y\text{Co}_z]\text{O}_2$ structures tend to become unstable at high levels of delithiation, which is attributed largely to the highly oxidizing nature of tetravalent Co and Ni that results in the loss of oxygen and the migration of the transition metal ions to the lithium-depleted layer. In spite of numerous valuable works, the cycle life and thermal stability of $\text{Li}[\text{Mn}_x\text{Ni}_y\text{Co}_z]\text{O}_2$ still need further improvement. Several strategies have been used to improve the electrochemical performances of $\text{Li}[\text{Mn}_x\text{Ni}_y\text{Co}_z]\text{O}_2$ cathode, which can be summarized as follows:

2.2.2.1 Surface modifications

Coating of the surfaces of $\text{Li}[\text{Mn}_x\text{Ni}_y\text{Co}_z]\text{O}_2$ with Al_2O_3 , LiAlO_2 , AlPO_4 , and ZrO_2 has been widely attempted, leading to significantly improved electrochemical properties. For example, Hu et al. (2009) coated the surface of $\text{LiNi}_{1/3}\text{Co}_{1/3}\text{Mn}_{1/3}\text{O}_2$ with a uniform nano-sized layer of ZrO_2 . ZrO_2 -coated $\text{LiNi}_{1/3}\text{Co}_{1/3}\text{Mn}_{1/3}\text{O}_2$ exhibits an improved rate capability and cycling stability under a high cut-off voltage of 4.5 V, owing to the ability of ZrO_2 layer in preventing the direct contact of the active material with the electrolyte. In this case, ZrO_2 plays a similar role as it does in ZrO_2 coated LiCoO_2 (Chen et al., 2002).

2.2.2.2 Mixing with other layered components

Thackeray et al. (2007) proposed a strategy to stabilize a layered $\text{Li}[\text{Mn}_x\text{Ni}_y\text{Co}_z]\text{O}_2$ electrode by integrating a structurally compatible component that was electrochemically inactive between 4 and 3 V, aiming to increase the stability of layered electrodes over a wider compositional range without compromising the power or cycle life of the cells. Li_2MnO_3 is the best stabilized component for $\text{Li}[\text{Mn}_x\text{Ni}_y\text{Co}_z]\text{O}_2$ electrode because it is electrochemically inactive over a potential window of 2.0–4.4 V in which $\text{Li}[\text{Mn}_x\text{Ni}_y\text{Co}_z]\text{O}_2$ component is electrochemically active and operates as a true insertion electrode. In Li_2MnO_3 , all manganese ions are tetravalent and cannot be oxidized further. Lithium insertion into Li_2MnO_3 , with a concomitant reduction of the manganese ions, is also prohibited because there are no energetically favourable interstitial sites for the guest ions. Under such conditions, Li_2MnO_3 component acts as a stabilizing unit in the electrode structure. (Thackeray et al., 2007) When charged to higher potentials, typically 4.5 V, it is possible to activate the Li_2MnO_3 component during the initial charge by removing Li^+ with a concomitant loss of oxygen. The removal of two Li^+ from the Li_2MnO_3 component and the reinsertion of only one Li^+ into the resulting MnO_2 component, exceptionally high reversible capacities (230–250 mAh/g) can be obtained. For example, Li et al. (2011) synthesized a high-voltage layered $\text{Li}[\text{Li}_{0.2}\text{Mn}_{0.56}\text{Ni}_{0.16}\text{Co}_{0.08}]\text{O}_2$ cathode material, a solid solution between Li_2MnO_3 and $\text{LiMn}_{0.4}\text{Ni}_{0.4}\text{Co}_{0.2}\text{O}_2$, by co-precipitation method followed by a high-temperature annealing. After the initial decay, no obvious capacity fading was observed when cycling the material at different rates. Steady-state reversible capacities of 220 mAh/g

at 0.2 C, 190 mAh/g at 1 C, 155 mAh/g at 5 C, and 110 mAh/g at 20 C were achieved in long-term cycle tests within the voltage cutoff limits of 2.5 and 4.8 V at 20 C.

2.2.2.3 Heterogeneous core-shell structure

Recently, Sun and co-workers proposed a novel core/shell concept that construct layered structured $\text{LiNi}_x\text{Co}_y\text{Mn}_z\text{O}_2$ cathode with a core enriched in Ni for high capacity and a shell enriched in Mn for high stability and cycling performance. They reported that core-shell cathode material $\text{Li}[(\text{Ni}_{0.8}\text{Co}_{0.1}\text{Mn}_{0.1})_{0.8}(\text{Ni}_{0.5}\text{Mn}_{0.5})_{0.2}]\text{O}_2$ exhibited an excellent cyclability and thermal stability (Sun et al., 2005). As shown in Figure 12, the core-shell structure consists of a Ni-rich $\text{LiNi}_{0.8}\text{Co}_{0.1}\text{Mn}_{0.1}\text{O}_2$ core that delivered a high capacity and a Mn-rich $\text{Li}[\text{Ni}_{0.5}\text{Mn}_{0.5}]\text{O}_2$ shell that provides a structural and thermal stability in highly delithiated states. After that, Sun et al. (2009) found a structural mismatch between the core and the shell: Voids of tens of nanometres between the core and shell appear in the core-shell powders after cycling. A shell with a gradient in chemical composition was proposed to grow onto the surfaces of a core material, forming a constant chemical composition. The concentration-gradient cathode material $(\text{Li}(\text{Ni}_{0.64}\text{Co}_{0.18}\text{Mn}_{0.18})\text{O}_2)$ thus achieved shows a high capacity of 209 mAh/g, which retains 96% after 50 charge/discharge cycles under an aggressive test profile (55 °C between 3.0 and 4.4 V), as shown in Figure 13. In a latest work by Koenig and Sun (Koenig et al., 2011), particles with internal gradients in transition metal composition was synthesized using a co-precipitation reaction with a control over the process conditions. By this, compositions and structures can be rationally integrated into the synthesis process, and further gradient core-shell structure $\text{LiNi}_x\text{Co}_y\text{Mn}_z\text{O}_2$ materials will become a future choice for cathode in LIBs.

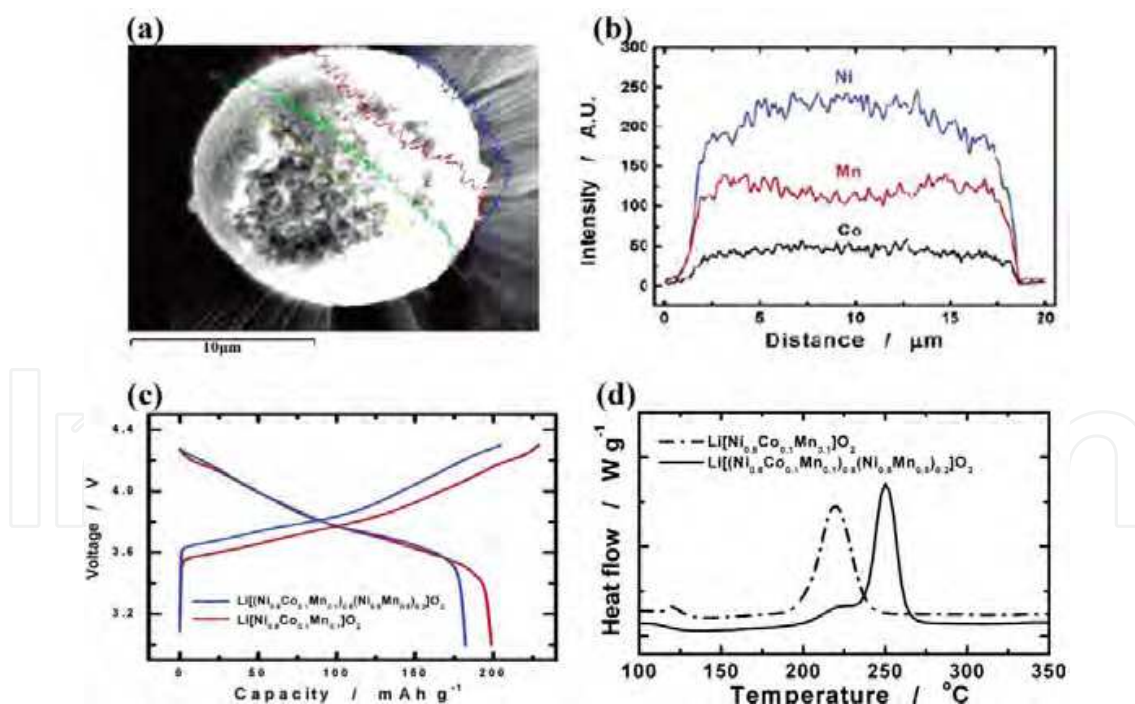


Fig. 12. a) SEM image and b) Energy dispersive spectroscopic line scan of $\text{Li}[(\text{Ni}_{0.8}\text{Co}_{0.1}\text{Mn}_{0.1})_{0.8}(\text{Ni}_{0.5}\text{Mn}_{0.5})_{0.2}]\text{O}_2$ particles; c) initial charge/discharge curves of $\text{Li}/\text{Li}[\text{Ni}_{0.8}\text{Co}_{0.1}\text{Mn}_{0.1}]\text{O}_2$ and $\text{Li}/\text{Li}[(\text{Ni}_{0.8}\text{Co}_{0.1}\text{Mn}_{0.1})_{0.8}(\text{Ni}_{0.5}\text{Mn}_{0.5})_{0.2}]\text{O}_2$ cell in a voltage range of 3.0–4.3 V; and d) differential scanning calorimetry traces of $\text{Li}[(\text{Ni}_{0.8}\text{Co}_{0.1}\text{Mn}_{0.1})_{0.8}(\text{Ni}_{0.5}\text{Mn}_{0.5})_{0.2}]\text{O}_2$ and $\text{Li}[\text{Ni}_{0.8}\text{Co}_{0.1}\text{Mn}_{0.1}]\text{O}_2$ at a charged state to 4.3 V. (Sun et al., 2005)

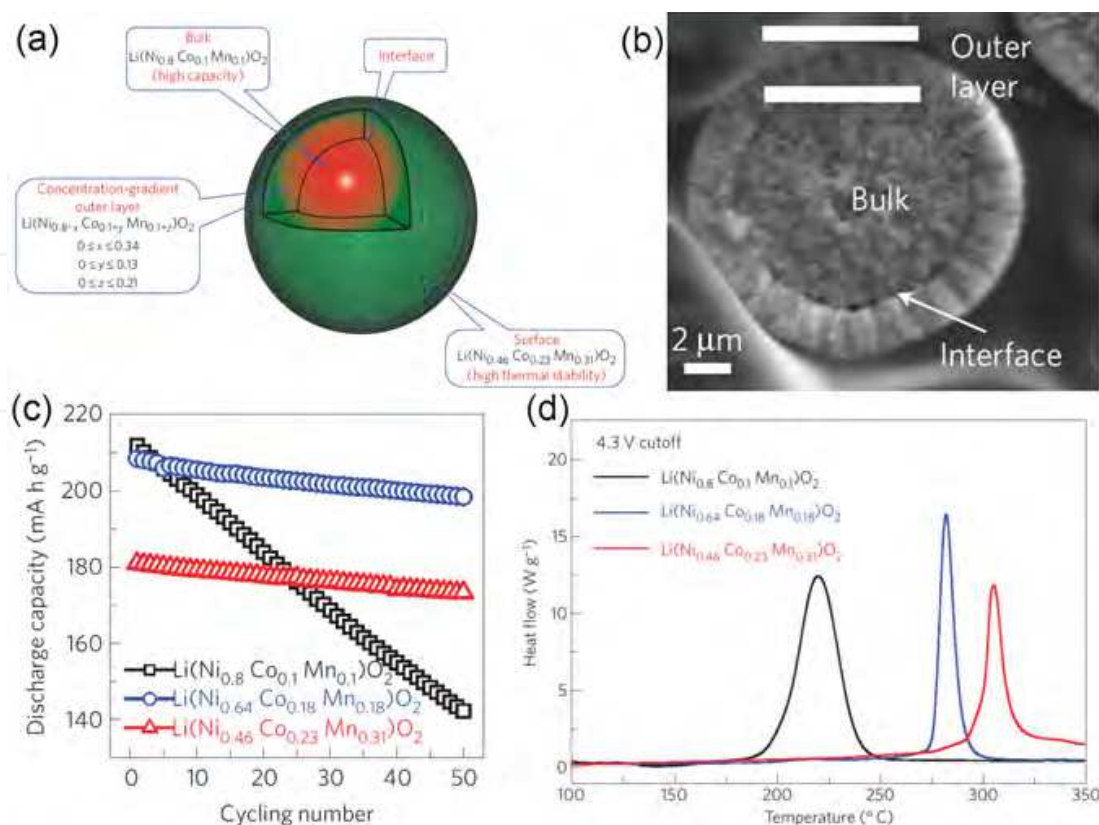


Fig. 13. a) Schematic diagram of cathode particle with Ni-rich core surrounded by concentration-gradient outer layer; b) a scanning electron micrograph of a typical particle; c) cycling performance of half cells based on $\text{Li}(\text{Ni}_{0.8}\text{Co}_{0.1}\text{Mn}_{0.1})\text{O}_2$, $\text{Li}(\text{Ni}_{0.46}\text{Co}_{0.23}\text{Mn}_{0.31})\text{O}_2$ and concentration-gradient material cycled between 3.0 and 4.4 V at 55 °C by applying a constant current rate of 0.5 C (95 mA/g); and d) differential scanning calorimetry traces showing a heat flow from the reaction between the electrolyte and different electrode materials when charged to 4.3 V. (Sun et al., 2009)

2.3 Three-dimensional cathode nanocomposites

Three-dimensional framework structures have many crosslinked channels which must be sufficiently large to accommodate the lithium ion. The advantages of three-dimensional frameworks are represented by i) a possibility of avoiding, for steric reasons, the co-insertion of bulky species such as solvent molecules; and ii) the smaller degree of expansion/contraction of the framework structure upon lithium insertion/extraction (Winter et al., 1998).

2.3.1 LiMn_2O_4

LiMn_2O_4 is regarded as one of the most promising cathodes because of its high output voltage, high natural abundance, low toxicity, and low cost. LiMn_2O_4 crystallizes in a spinel structure with the space group of $\text{Fd}\bar{3}\text{m}$. In the LiMn_2O_4 spinel structure, a cubic close-packed (ccp) array of oxygen ions occupy the 32e position, Mn ions are located in the 16d site, and Li in the 8a site. Mn ions have an octahedral coordination to oxygen, and the MnO_6 octahedra share edges in a three-dimensional host for Li guest ions. The 8a tetrahedral site is

situated furthest away from the 16d site of all the interstitial tetrahedral (8a, 8b and 48f) and octahedra (16c). Each of the 8a-tetrahedron faces is shared with an adjacent, vacant 16c site. This combination of structural features in the stoichiometric spinel compound constitutes a very stable structure, as shown in Figure 14. LiMn_2O_4 has a three-dimensional lithium diffusion path, in which every plane is suitable to exchange lithium ion from active materials to the electrolyte.

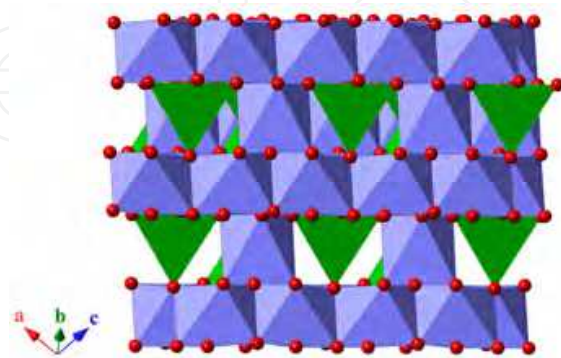


Fig. 14. Three-dimensional crystal structure of LiMn_2O_4 . MnO_6 octahedra are shown in blue, LiO_4 tetrahedra in green, and oxygen ions in red.

LiMn_2O_4 has a theoretical capacity of 148 mAh/g and a voltage plateau of about 4 V. A typical cyclic voltammogram of LiMn_2O_4 is shown in Figure 15. Two couples of reversible redox peaks are observed during the charge/discharge processes. The split of the redox peaks into two couples shows that the electrochemical reaction of the extraction and insertion of lithium ions occurs in two stages. The first oxidation peak is ascribed to the removal of Li^+ from half of the tetrahedral sites in which Li–Li interactions exist, whereas the second oxidation peak is attributed to the removal of Li^+ from the remaining tetrahedral sites where no Li–Li interactions exist. The whole process can be described as follows:

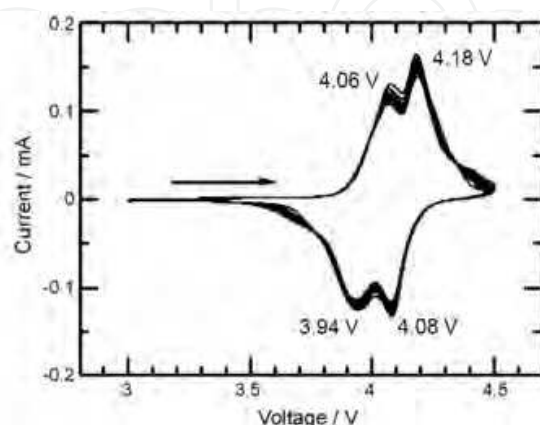
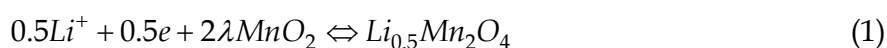


Fig. 15. Cyclic voltammograms of LiMn_2O_4 within the voltage range from 3.0 to 4.5 V versus Li/Li^+ . (Fang et al., 2008)

Since the application of LiMn_2O_4 in high power systems requires the development of fast kinetic electrodes which appears nowadays possible thanks to the use of nanostructured morphologies, various synthesis methods have been widely investigated to prepare nanostructured LiMn_2O_4 and these nanostructured methods have been demonstrated to be highly effective in greatly enhancing the electrochemical performance of LiMn_2O_4 electrode materials. It is found that the electrochemical performance of LiMn_2O_4 electrodes strongly depends on the morphology and the crystalline phase. For example, in our previous work (Fang et al., 2008), we verified that the electrochemical performance of LiMn_2O_4 could be improved by altering the starting materials, as shown in Figure 16. In particular, $\alpha\text{-MnO}_2$ nanorods are proved to be a quite promising starting material for the preparation of highly crystallized and high performance LiMn_2O_4 . After that, Ding et al. (2011) and Lee et al. (2010) prepared single-crystalline LiMn_2O_4 nanotubes and nanowires from $\beta\text{-MnO}_2$ and $\alpha\text{-MnO}_2$ precursors, respectively, which also leads to an improved electrochemical performance.

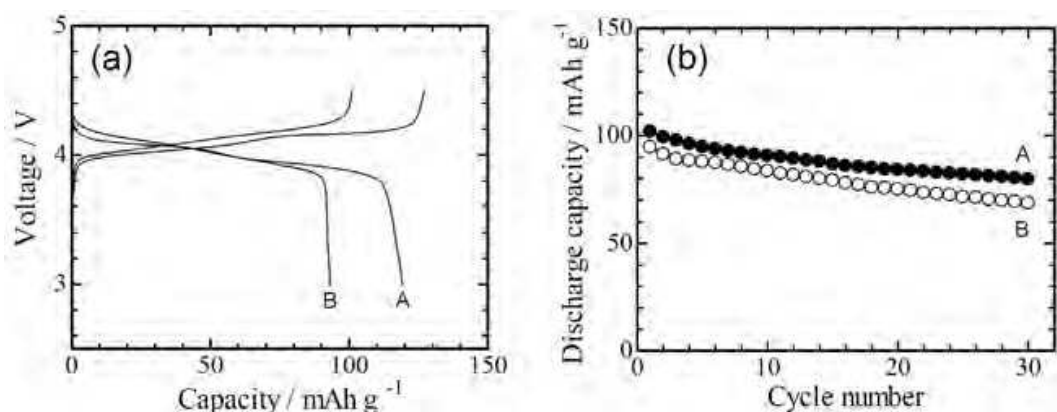


Fig. 16. a) Charge/discharge curves and b) cycling performance of LiMn_2O_4 prepared from $\alpha\text{-MnO}_2$ nanorods (A) and commercial MnO_2 (B) in the voltage range from 3.0 to 4.5 V versus Li/Li^+ at a current density of 20 mA/g. (Fang et al., 2008)

Unfortunately, LiMn_2O_4 shows a fast capacity fading during the cyclings, which cannot be ultimately solved by nanostructured approaches only. The capacity fading of LiMn_2O_4 has been ascribed to the dissolution of Mn, Jahn-Teller distortion of Mn^{3+} , and decomposition of electrolyte solution on electrode. Of the above factors, dissolution of surface Mn^{3+} with the electrolyte is now regarded as the most important reason for the capacity fading. Surface modification of the cathode electrode has been a successful strategy to solve the capacity fading problem, which could decrease the surface area to retard the side reactions between the electrode and electrolyte and to further diminish the Mn dissolution during cycling. In recent years, various types of coating materials, including oxides, metals, fluorides, phosphate, polymers, carbon materials, and other electrode materials have been explored to improve the electrochemical stability of LiMn_2O_4 cathodes. For example, Sahan et al. (2008) reported that $\text{Li}_2\text{O}-2\text{B}_2\text{O}_3$ (LBO)-coated LiMn_2O_4 electrode prepared by a solution method shows an excellent cycling behaviour without any capacity loss even after 30 cycles at room temperature and a 1-C rate, as plotted in Figure 17. The improved cycling stability is also achieved by coating with $[\text{Li}, \text{La}]\text{TiO}_3$ (Jung et al., 2011) and $\text{Li}_4\text{Ti}_5\text{O}_{12}$ (Liu et al., 2007). Recent developments in the surface modification have been reviewed by Yi et al. (2009). Despite the numerous studies in this area, a functional understanding of coated LiMn_2O_4 electrodes remains incomplete. In the case of metal oxides, it appears likely that some of the metal oxides such as MgO , Al_2O_3 , ZrO_2

may act as a physical protection barrier to depress Mn^{2+} dissolution by forming epitaxial layers on the underlying coated spinel, improving the structural stability of the cathode. It has also been suggested that ZnO coatings may act as HF scavenger to be capable of neutralizing the acid species. However, it is not yet clear which of these various processes is most important to the stabilization of a LiMn_2O_4 electrode surface. Recently, Ouyang et al., (2010) reported the results of ab initio studies of the atomic and electronic structure of clean and Al_2O_3 covered $\text{Li}_x\text{Mn}_2\text{O}_4$ (001) surfaces ($x=0$ or 1). They gave a clear picture that only Mn^{3+} ions occur at the clean LiMn_2O_4 (001) surfaces due to a lower coordination with O atoms, while Mn atoms in bulk LiMn_2O_4 exhibit a mixed $\text{Mn}^{3+}/\text{Mn}^{4+}$ oxidation states. An Al_2O_3 ad-layer inhibits the formation of Mn^{3+} at the $\text{Li}_x\text{Mn}_2\text{O}_4$ (001) surfaces and thus has a more complex role than just separating the cathode from the electrolyte as is commonly assumed. Key variables that influence the coating efficacy remain to be identified and optimized for most of the coating materials that have been employed to date.

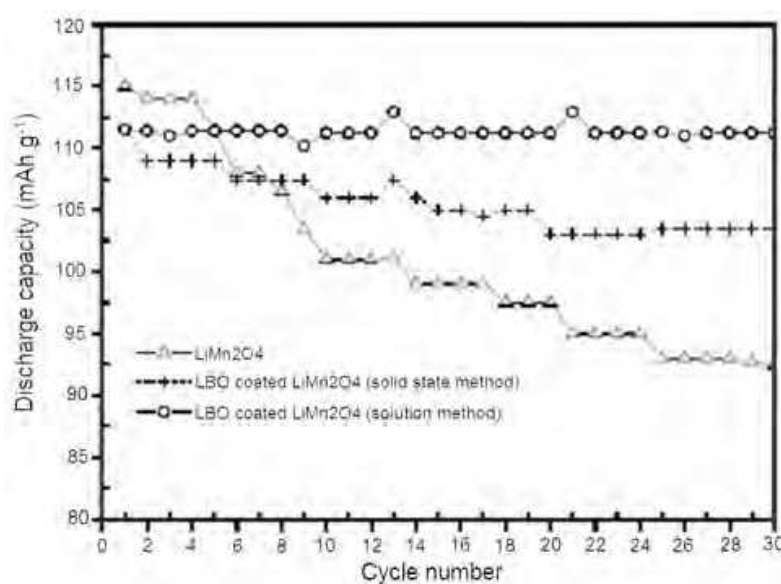


Fig. 17. Cycling performance of different materials at 1C discharge rate at room temperature. (Sahan et al., 2008)

2.3.2 $\text{LiNi}_{0.5}\text{Mn}_{1.5}\text{O}_4$

Ni-doped spinel oxide, $\text{LiNi}_{0.5}\text{Mn}_{1.5}\text{O}_4$, is another promising three-dimensional cathode material for future high power battery applications due to its large reversible capacity (147 mAh/g) at a high operating voltage around 4.7 V. $\text{LiNi}_{0.5}\text{Mn}_{1.5}\text{O}_4$ spinel is fundamentally different from pure spinels as all redox activity takes place on Ni and Mn remains in +4 state.

$\text{LiNi}_{0.5}\text{Mn}_{1.5}\text{O}_4$ has two different crystal structures of the space groups of $Fd-3m$ or $P4_332$ depending on Ni ordering in the lattice. As shown in Figure 18, $Fd-3m$ type $\text{LiNi}_{0.5}\text{Mn}_{1.5}\text{O}_4$ is a disordering distribution, the Ni and Mn, Li and O atoms are occupied in the 16d octahedral sites, 8a tetrahedral sites and 32e sites, respectively. In this case, Ni and Mn atoms are randomly distributed in the 16d sites. The $P4_332$ type $\text{LiNi}_{0.5}\text{Mn}_{1.5}\text{O}_4$ is has an ordered distribution, in which Ni, Mn, and Li atoms occupy the 4a, 12d, and 4c sites, respectively. O ions occupy the 8c and 24e sites. In this case, Ni and Mn atoms are ordered regularly (Santhanam et al., 2010). It has been reported that $\text{LiNi}_{0.5}\text{Mn}_{1.5}\text{O}_4$ with $Fd-3m$ space

group has a better electrochemical performance than that of spinel with $P4_332$ space group due to a 2.5 orders of magnitude faster electronic conductivity.

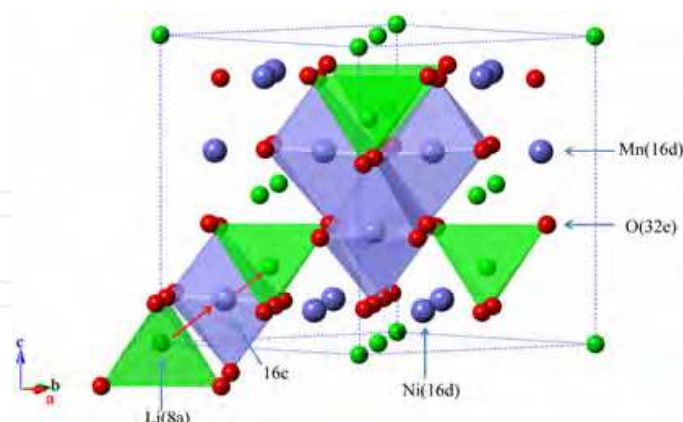


Fig. 18. Spinel structure of $\text{LiNi}_{0.5}\text{Mn}_{1.5}\text{O}_4$ ($Fd-3m$) showing the diffusion path of Li^+ . (Redrawn from Ref. (Xia et al., 2007))

A typical cyclic voltammogram of $Fd-3m$ type $\text{LiNi}_{0.5}\text{Mn}_{1.5}\text{O}_4$ is shown in Figure 19. Three well-defined reversible peaks are observed during the charge/discharge processes. The appearance of 4 V peak is due to Mn^{3+} which is formed by oxygen loss during the high-temperature calcinations. Two major peaks appearing between 4.5 and 5 V during charge/discharge cyclings are due to the redox couples $\text{Ni}^{2+}/\text{Ni}^{3+}$ and $\text{Ni}^{3+}/\text{Ni}^{4+}$ or ordering of lithium and vacancies at $x = 0.5$. For the ordered spinel, the 4V peaks are absent because oxidation states of Ni and Mn were +2 and +4, respectively (Santhanam, et al., 2010).

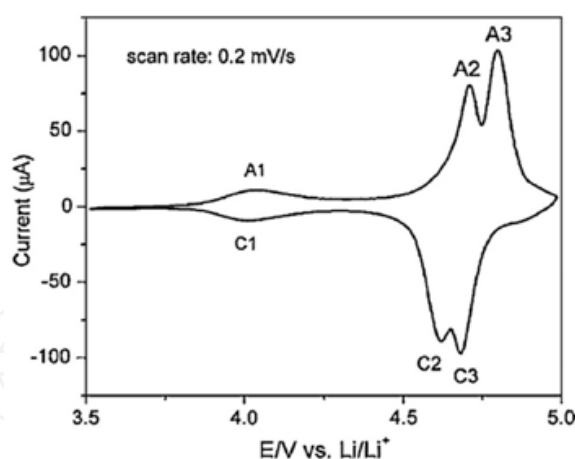


Fig. 19. Cyclic voltammogram of $\text{LiNi}_{0.5}\text{Mn}_{1.5}\text{O}_4$ electrode cycled between 3.5 and 5 V vs. Li/Li^+ at 0.2 mVs^{-1} scan rate (Xia et al., 2007)

There are two main problems with this $\text{LiNi}_{0.5}\text{Mn}_{1.5}\text{O}_4$ spinel material: One is that it is difficult to prepare pure spinel $\text{LiNi}_{0.5}\text{Mn}_{1.5}\text{O}_4$ due to the formation of $\text{Li}_x\text{Ni}_{1-x}\text{O}$ as a second phase at high calcination temperatures. Developing low-temperature synthesis method of nanostructure $\text{LiNi}_{0.5}\text{Mn}_{1.5}\text{O}_4$ is an effective strategy to solve this problem. In our previous work, we discovered a low-temperature solid-state route for single-phase $\text{LiNi}_{0.5}\text{Mn}_{1.5}\text{O}_4$ (Fang et al., 2007). As shown in Figure 20, $\text{LiNi}_{0.5}\text{Mn}_{1.5}\text{O}_4$ shows a dimension of about 200 nm and has a cubic spinel structure, which can be indexed in a

space group of $Fd-3m$. The discharge capacity of $\text{LiNi}_{0.5}\text{Mn}_{1.5}\text{O}_4$ reaches up to 134 mAh/g at a current density of 20 mA/g, while it retains as high as 110 mAh/g even at a high current density of 900 mA/g.

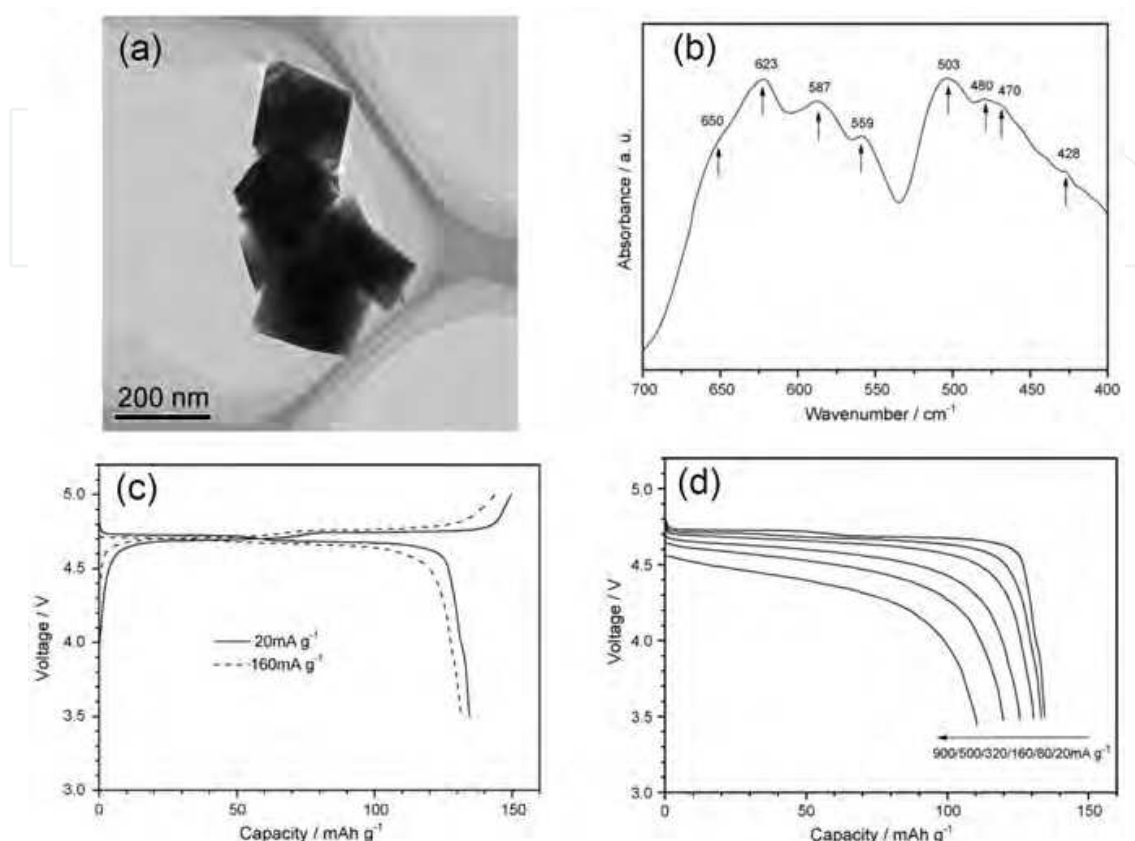


Fig. 20. a) Transmission electron micrograph and b) IR spectrum of $\text{LiNi}_{0.5}\text{Mn}_{1.5}\text{O}_4$; c) Charge/discharge curves of $\text{LiNi}_{0.5}\text{Mn}_{1.5}\text{O}_4$ cycled at current densities of 20 mA/g (solid line) and 160 mA/g (dash line); and d) Discharge curves of the as-prepared $\text{LiNi}_{0.5}\text{Mn}_{1.5}\text{O}_4$ at various current densities. (Fang et al., 2007)

The another one problem is that $\text{LiNi}_{0.5}\text{Mn}_{1.5}\text{O}_4$ still undergoes decomposition of electrolyte and dissolution of Mn and Ni, particularly under high voltage and elevated temperature conditions. The construction of heterogeneous nanostructure by coating some chemically stable compounds on $\text{LiNi}_{0.5}\text{Mn}_{1.5}\text{O}_4$ is a most widely used strategy to enhance the electrochemical properties of $\text{LiNi}_{0.5}\text{Mn}_{1.5}\text{O}_4$. This strategy has the advantages of the delivery of the original capacity due to no reduction in the amount of electrochemically active elements in the parent oxide and the suppression of the corrosion reactions between the high voltage spinel cathode and electrolyte. In this regard, various materials such as metal oxides, metal, fluoride, and carbon have been used to modify the surfaces of $\text{LiNi}_{0.5}\text{Mn}_{1.5}\text{O}_4$.

2.3.2.1 Coating by metal oxides

Surface modifications of $\text{LiNi}_{0.5}\text{Mn}_{1.5}\text{O}_4$ spinel material by metal oxides such as ZnO (Arrebola et al., 2010), ZrO_2 (Wu et al., 2010), Bi_2O_3 (Liu et al., 2009), and SiO_2 (Fan et al., 2007) have been investigated. Metal oxides coating act as a protective layer against the attack by HF that generated from the decomposition of LiPF_6 salt in the electrolyte, which effectively suppresses the corrosion reaction. For example, Sun et al. (2002) reported that the

surface modification of $\text{LiNi}_{0.5}\text{Mn}_{1.5}\text{O}_4$ by ZnO significantly improves the capability at elevated temperature. ZnO-coated electrode delivers a capacity of 137 mAh/g without any capacity loss even after 50 cycles at 55 °C. ZnO coating layer scavenged fluorine anions by transforming HF to ZnF_2 , which keeps the original particle morphology and reduces an increase in interfacial impedance between cathode and electrolyte. Arrebola et al (2010) have also confirmed the role of scavenging HF of ZnO coating layer, in which ZnO coating is beneficial for enhancing the rate capability of $\text{LiNi}_{0.5}\text{Mn}_{1.5}\text{O}_4$. In the case of SiO_2 coated $\text{LiNi}_{0.5}\text{Mn}_{1.5}\text{O}_4$ reported by Fan et al. (2007), $\text{LiNi}_{0.5}\text{Mn}_{1.5}\text{O}_4$ spinel is modified by a porous, nanostructured, amorphous SiO_2 surface layer, which is a good HF consumer that can neutralize HF and yields Si-F species. Nanocomposites displayed an obviously improved capacity retention rate at 55 °C, which is beneficial from the lower HF content in electrolyte resulting from the reaction between SiO_2 and HF and the mechanical separation effect of the SiO_2 coating result in relatively lower content of LiF in the surfaces of the coated $\text{LiNi}_{0.5}\text{Mn}_{1.5}\text{O}_4$ cathode materials. Very recently, Liu et al. (2009) modified the surface of the 5 V cathode material by Bi_2O_3 coating, which rendered both excellent rate capability and improved cycling performance. Further investigation indicates that Bi_2O_3 is reduced on the cathode surfaces during the electrochemical cycling to metallic Bi, an electronic conductor. Thus, “ Bi_2O_3 ” modified layer acts as a protection shell and a fast electron transfer channel as well, which renders an excellent rate capability and good cycling performance.

2.3.2.2 Coating by metals

Metals such as Zn (Alcantara et al., 2004), Au (Arrebola et al., 2007) and Ag (Arrebola et al., 2005) have also been coated onto the surfaces of spinel $\text{LiNi}_{0.5}\text{Mn}_{1.5}\text{O}_4$ which significantly improves the electrochemical performance. For instance, Arrebola et al. (2007) found that Au coating on $\text{LiNi}_{0.5}\text{Mn}_{1.5}\text{O}_4$ has a beneficial effect in increasing the capacity by hindering the unwanted reactions and simultaneously preventing the active material particles from reacting with the decomposition products such as HF. These authors studied the adverse effect of Ag treatment on the electrochemical performance of $\text{LiNi}_{0.5}\text{Mn}_{1.5}\text{O}_4$. It is found that Ag treatment has only limited benefit at low current densities, while at moderate and high current densities, the capacity delivered is relatively low, even lower than that of the untreated spinel.

2.3.2.3 Coating by fluoride

Coating of spinel $\text{LiNi}_{0.5}\text{Mn}_{1.5}\text{O}_4$ with BiOF can also improve the electrochemical performances (Kang et al., 2010). For instance, BiOF-coated $\text{LiNi}_{0.5}\text{Mn}_{1.5}\text{O}_4$ shows a significantly improved capacity retention of 84.5% for 70 cycles at 55 °C, while the uncoated one exhibits a capacity retention of only 31.3%. The rate capability of the BiOF-coated $\text{LiNi}_{0.5}\text{Mn}_{1.5}\text{O}_4$ is also significantly enhanced. Such improvements in electrochemical performance are attributed to the scavenging HF by BiOF layer from the electrolyte.

2.3.2.4 Coating by carbon

Yang et al. (2011) coated the spinel $\text{LiNi}_{0.5}\text{Mn}_{1.5}\text{O}_4$ with a small amount of conductive carbon by the carbonization of sucrose. It is found that carbon coating greatly enhances the discharge capacity, rate capability, and cycling stability of the $\text{LiNi}_{0.5}\text{Mn}_{1.5}\text{O}_4$ without degrading the spinel structure. $\text{LiNi}_{0.5}\text{Mn}_{1.5}\text{O}_4$ modified with optimal 1 wt% sucrose can deliver a large capacity of 130 mAh/g at 1 C discharge rate with a high retention of 92% after 100 cycles and a high 114 mAh/g at 5 C discharge rate. The improved electrochemical performances upon carbon-coating are the consequence of the suppression of SEI layer as well as the enhancements in the electronic conductivity and Li^+ diffusion.

2.4 Vanadium pentoxide (V_2O_5)

V_2O_5 is a typical intercalation compound with a layered structure, and therefore is a very promising electrode material for LIBs as it offers the essential advantages of low-cost, abundant sources, high energy density, and better safety. As seen from Figure 21, V_2O_5 has an orthorhombic crystal structure which can be described as layers of VO_5 square pyramids that share edges and corners. The sixth V-O bond in the c -direction consists of the weak electrostatic interactions, which facilitates the insertion of various ions and molecules between the layers. Li-ion insertion and electronic transport occur more easily along the a - b plane rather than through the layers of the c -axis (Chan et al., 2007). Lithium intercalates along the a - b plane into the interlayer space follows the equation:

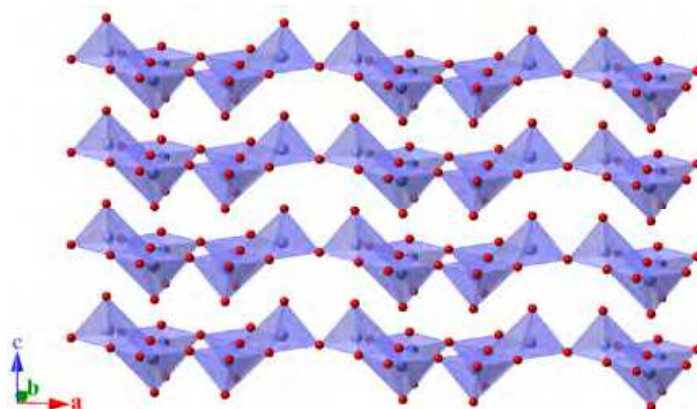


Fig. 21. Layered crystal structure of bulk V_2O_5 with boxed region indicating the unit cell. O atoms are in red and VO_5 units in blue.

The theoretical capacity of V_2O_5 with two lithium insertions/extractions is about 294 mAh/g, much higher than those of the commonly used cathode materials like $LiFePO_4$ (170 mAh/g), making it a promising cathode material for high power batteries. Since the nanostructured approaches have been recently demonstrated to be highly effective in enhancing the electrochemical performance of electrode materials, various nanostructured V_2O_5 has been studied to show the improved electrochemical properties as featured by high capacity and remarkable reversibility. For example, Sides et al. (2005) reported the preparation of monodisperse V_2O_5 fibers with an improved electrochemical performance because of the reduced lithium ion diffusion path and increased electrolyte-accessible surface area. Cao et al. (2005) have synthesized V_2O_5 with highly ordered superstructures, in which nanoparticles interconnect to form nanorods, and these rods circle around to form hollow microspheres. The specific capacity of these V_2O_5 hollow microspheres is 286.4 mAh/g at 0.2 C charge/discharge rate, which is very close to the theoretical capacity of V_2O_5 . However, the Li-ion diffusion coefficient (10^{-12} cm²/s) and the electronic conductivity (10^{-2} – 10^{-3} S/cm) in crystalline V_2O_5 are inherently too low to sustain a large specific capacity at high charge/discharge rates, which cannot be simply altered by the nanostructured strategies mentioned above. In order to improve the electrochemical performance, many heterogeneous nanostructured forms of V_2O_5 composites have been reported in the literature, and the usefulness of these designs has been demonstrated.

2.4.1 Mixed with conducting secondary phase

To enhance the high rate capability of V_2O_5 cathode materials, the creation of heterogeneous nanostructures from nanoscale V_2O_5 and conducting secondary phase is one of the most widely used strategies. There are three kinds of mainly adopted conducting materials, viz. conducting conjugated polymers (CCPS), carbon materials, and various metal oxides. CCPS possess a high inherent conductivity and is able to undergo practically fully reversible redox processes. The heterogeneous nanostructures from V_2O_5 and CCPS combine a high capacity and ability to intercalate lithium ions in V_2O_5 , and high cyclability, conductivity, and other properties of CCPS. For example, Posudievsky et al., (2011) prepared two-component guest-host nanocomposites which are composed of conducting polymers (polyaniline, polypyrrole and polythiophene) and V_2O_5 . The nanocomposites are capable of reversible cycling as the positive electrode in a lithium ion cell, and retain their capacity over one hundred full charge/discharge cycles. The higher discharge capacity, stability in prolonged charge/discharge cycling, and improved diffusion of lithium ions in the nanocomposites, are the consequences of pillaring by the conducting polymer macromolecules in the layers of the inorganic matrix.

Carbon coating has been applied to V_2O_5 cathode to give good electronic conductivity and stability (Odani et al., 2006; Koltypin et al., 2007). For example, Koltypin et al. (2007) have prepared carbon-coated V_2O_5 nanoparticles. The carbon coated V_2O_5 electrodes demonstrate a higher capacity, much better rate capability, and very good stability upon cycling and aging at elevated temperatures when compared to the electrodes that comprise the microparticles of V_2O_5 .

Other than CCPS and carbon, inorganic oxides such as TiO_2 (Takahashi et al., 2006) and WO_3 (Cai et al., 2011) have been introduced with an aim to improve the electrochemical properties by modifying the crystallinity of V_2O_5 . For example, Cai et al. (2011) found that V_2O_5 - WO_3 composite films show the enhanced Li-ion intercalation properties compared to pure V_2O_5 or WO_3 films. At a high current density of 1.33 A/g, V_2O_5 - WO_3 film with a V_2O_5 / WO_3 molar ratio of 10/1 exhibits the highest capacities of 200 mAh/g at the first cycle and 132 mAh/g after 50 cycles, while pure V_2O_5 film delivers discharge capacities of 108 mAh/g at the first cycle and 122 mAh/g after 50 cycles. The enhanced Li-ion intercalation properties of the composite films are ascribed to the reduced crystallinity, increased porosity, and the enhanced surface area.

2.4.2 Thin layer loaded on a continuous conductive matrix

To improve the high rate electrochemical property of V_2O_5 , rapid and continuous electronic and ionic transportation path are required. Reducing the dimension of V_2O_5 is a most effective method to shorten the Li ion diffusion path and fasten the Li ion transportation, since Li-ion diffusion coefficient of V_2O_5 (10^{-12} cm²/s) cannot be altered simply by nanostructure strategy. Also, the disadvantage of the low electronic conductivity (10^{-2} – 10^{-3} S/cm) of V_2O_5 can be effectively overcome by the introduction of conductive secondary phase. So, if uniformly ultra thin layer of V_2O_5 is formed on a continuous conductive matrix, rapid and continuous electronic and ionic transportation path can be achieved. For example, Yamada et al. (2007) coated thin V_2O_5 layer on porous carbon, as shown in Figure 22a. In their work, the porous carbons were prepared using SiO_2 colloidal crystals as the templates with three dimensionally interconnected pores, and then V_2O_5 /carbon composites were achieved by immersing the

porous carbons in V_2O_5 sol under a reduced pressure. Nanoporous V_2O_5 /carbon composites thus prepared exhibit a large capacity of more than 100 mAh/g and good rate capability of 80% at 5.0 A/g (Figure 22b). The good performance is explained by electric double layer capacitance of large surface area and high rate lithium insertion to V_2O_5 gel.

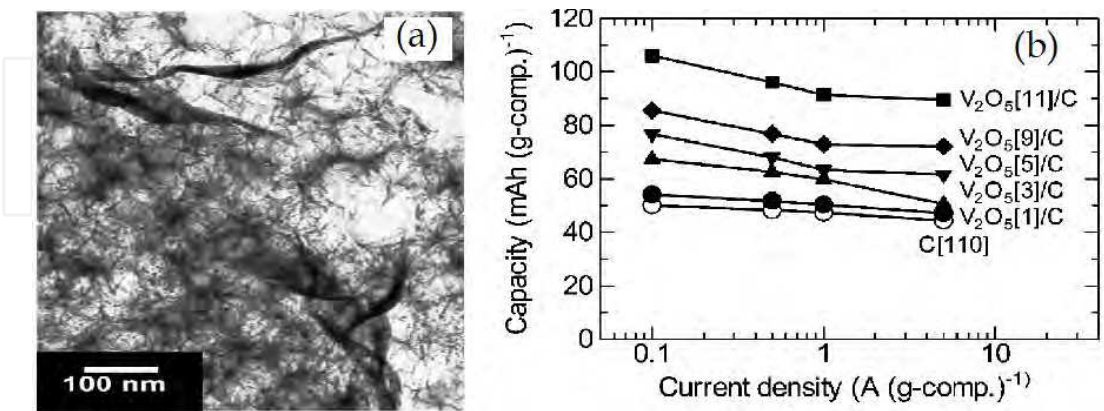


Fig. 22. a) TEM image of V_2O_5 /C composites; and b) rate capability of V_2O_5 [n]/C composites. (Yamada et al., 2007)

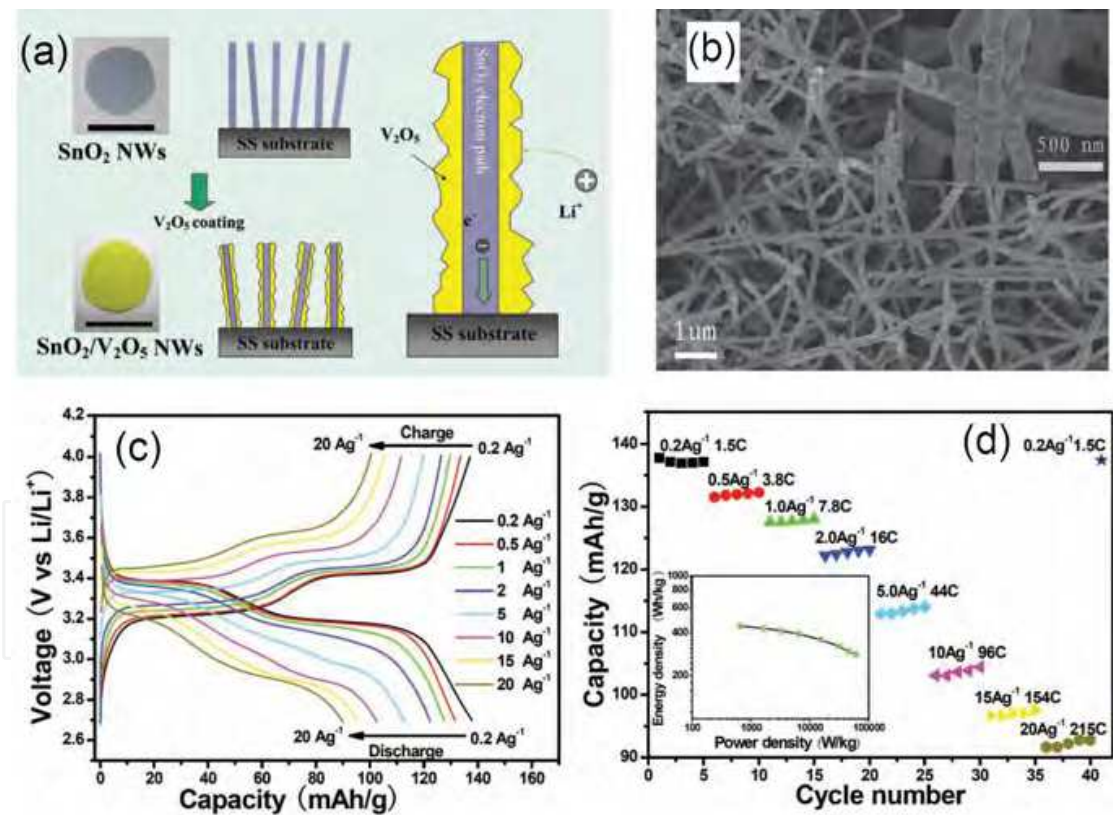


Fig. 23. a) Schematic diagram showing the strategy for coating V_2O_5 on SnO_2 nanowires (NWs) grown on a stainless-steel (SS) substrate; b) FE-SEM image of the typical V_2O_5 loaded SnO_2 nanowires; the inset indicates the diameter is about 100 nm; c) the galvanostatic charge/discharge curves of the SVN electrode at different current densities; and d) rate performance at different current densities, and the inset showing the Ragone plots. (Yan et al., 2011)

Recently, Yan et al. (2011) have adopted a simple gas-phase-based method to synthesize V_2O_5 loaded SnO_2 nanowires on the stainless-steel substrate (Figures 23a and b). V_2O_5 loaded SnO_2 nanowires exhibit a high rate capability and very good cycling stability (Figure 23c). SnO_2/V_2O_5 core/shell-nanowires deliver a high power density of about 60 kW/kg while the energy density remains at 282 wh/kg (Figure 23d). The improved electrochemical performance can be ascribed to the synergic effect of V_2O_5 thin layer and SnO_2 nanowires. V_2O_5 layer coated on SnO_2 is very thin, which could shorten the ion-diffusion time and enable a high utilization of V_2O_5 . The free-standing SnO_2 nanowires create porous channels, providing effective electrolyte transport and a large contact interface between the electrolyte and active materials. These findings open up new opportunities in the development of high-performance energy-storage devices used for micro-systems, thin-film devices, and other functional devices.

3. Heterogeneous nanostructured anode materials

Due to the low theoretical capacity of 372 mAh/g for graphitic carbon, intensive research has been conducted to search for the alternative anode materials with higher capacities and rate capabilities. Many other anode materials, such as Sn, Sb, Si, Ge, SnO_2 , and Co_3O_4 have been reported to have larger lithium storage capacities than graphitic carbon via the formation of alloys with lithium or through the reversible reactions with lithium ions. However, these anode materials suffer from the huge volume variation during the lithium insertion/extraction process which leads to the pulverization problem and moreover a rapid deterioration in capacity. Reducing the size of these anode materials to nanometer scale can partially suppress the volume variation, and designing the structure of these anode materials as hollow spheres or porous particles can improve the lithium storage capacity and their initial Coulombic efficiency to a certain degree. Unfortunately, the capacity decay of the electrode along with the charge/discharge cycling still cannot be completely avoided (Liang et al., 2009). Recently, heterogeneous nanostructured anode materials, which are composed of multi-nanocomponents have been shown to exhibit an improved rate and cycling performance due to the synergic effect between the functional nanocomponents. In this section, we introduced the recent trends and developments of these heterogeneous nanostructured anode materials, including carbonaceous nanocomposites, polymer/inorganic oxides nanocomposites, and binder-free thin-film nanocomposites.

3.1 Carbonaceous composites anode materials

Carbonaceous composites materials have been widely used for anodes. Though there are many different types of carbon materials, such as amorphous carbon, carbon nanotubes, and graphene, etc., all of them can not only significantly enhance the electronic conductivity of electrode materials, but also lead to the stabilized SEI films on anodes, which result in the improved rate and cycling performance. However, the synergic effect between carbon materials and other lithium intercalation materials is very complicated. Even when the same carbon material is adopted, the synergic effect could be significantly different due to the varied combination states of nanocomponents.

3.1.1 Core-shell nanocomposites

Core-shell nanocomposites for carbon-based anodes refer to a core energy dense nanoparticle coated with a thin amorphous carbon shell, which enhances the electrical

conductivity, prevents aggregation, improves chemical stability, and buffers the stress of the inner nanoscale active material. Zhang et al. (2008) reported tin nanoparticles encapsulated elastic hollow carbon spheres (TNHCs) with a uniform size. As shown in Figure 24, in the TNHCs composites, multiple tin nanoparticles with a diameter of less than 100 nm are encapsulated in one thin hollow carbon sphere with a thickness of only 20 nm. This special structure results in both the content of Sn up to 70% by weight and the void volume in carbon shell as high as 70–80% by volume. This void volume and elasticity of thin carbon spherical shell efficiently accommodate the volume change of tin nanoparticles due to the Li-Sn alloying-dealloying reactions, and thus prevent the pulverization of electrode. As a result, this composite shows a decent cycle ability with a high initial capacity of more than 800 mAh/g, and after 100 cycles it shows only a moderate decrease in its specific capacity to 550 mAh/g. Coaxial SnO_2 @carbon hollow nanospheres have also been reported by Lou et al. (2009). In this new type of nanoarchitecture, the carbon shell is tightly attached to the SnO_2 shell, beneficial for the mechanical reinforcement and the enhanced electronic conduction. The composites deliver a discharge capacity of around 460 mAh/g after 100 cycles with little capacity fade.

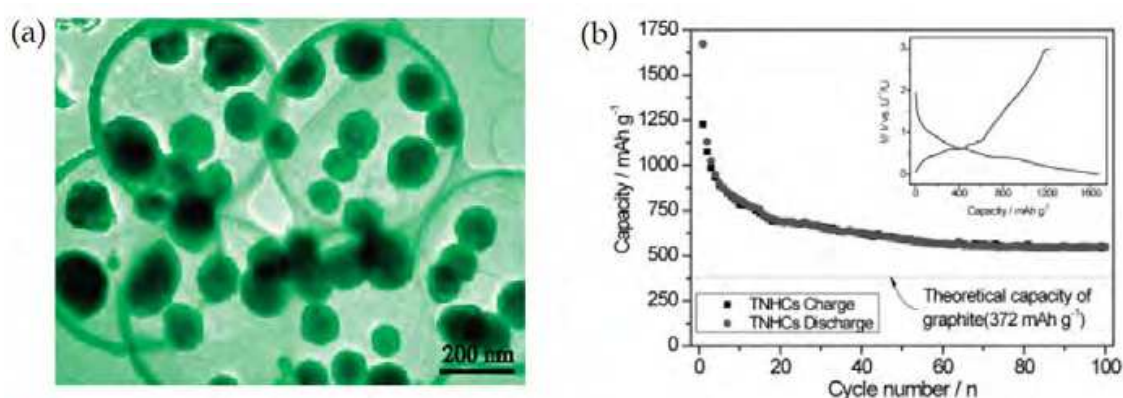


Fig. 24. a) TEM image of TNHCs; b) discharge/charge capacity profiles of TNHCs in 5 mV-3 V (vs. Li^+/Li) voltage window and C/5. Inset shows the first discharge/charge profiles of TNHCs cycled at a rate of C/5. (Zhang et al., 2008)

Recently, Yang et al. (2011) reported $\text{TiO}_2(\text{B})$ @carbon composite nanowires by a two-step hydrothermal process with subsequent heat treatment in argon. As shown in Figure 25, the nanostructures exhibit a unique feature of having $\text{TiO}_2(\text{B})$ encapsulated inside and an amorphous carbon layer coating outside. The carbon shell accelerates the diffusion of both electrons and lithium ions, ensuring a high electrode-electrolyte contact area and eventually making a greater contribution to the capacity. $\text{TiO}_2(\text{B})$ core also acts as an effective mechanical support to alleviate the stress produced during lithium intercalation/ deintercalation and preserve the one dimensional core/shell structure even after 100 charge/discharge cycles. The composite nanowires exhibit a high reversible capacity of 560 mAh/g after 100 cycles at a current density of 30 mA/g, and excellent cycling stability and rate capability.

Above reports have fully demonstrated the benefits of heterogeneous core-shell nanostructures. In this core-shell strategy, the void volume in the core-shell configuration should be optimized according to the actual volume variation of electrode materials during the lithium insertion and extraction, in order to avoid decreasing the volume energy density of LIBs in practical uses.

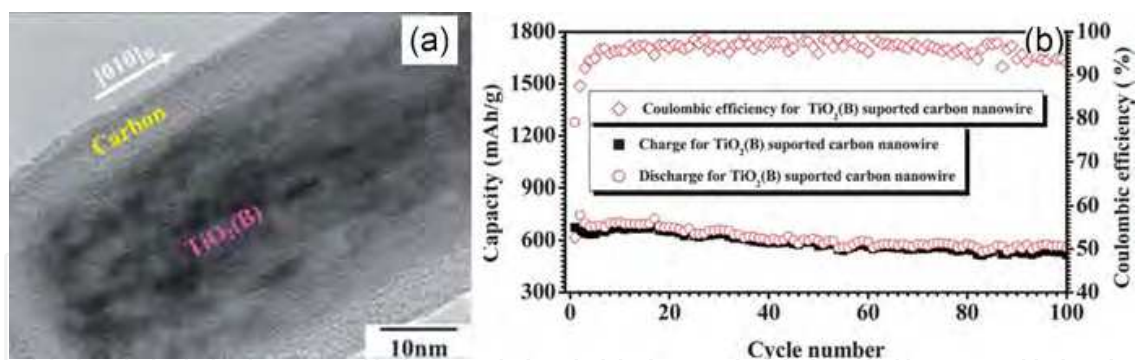


Fig. 25. a) HRTEM image of a section of a $\text{TiO}_2(\text{B})$ @carbon composite nanowire; b) capacity vs. cycle number curves from the first cycle to the 100th cycle for the $\text{TiO}_2(\text{B})$ @carbon composite nanowires at a current density of 30 mA/g. (Yang et al., 2011)

3.1.2 Carbon-nanotube-based nanocomposites

Unique properties of carbon nanotube (CNT) such as high conductivity, nanotexture, resiliency, are very helpful for LIBs, where pure CNT and/or their composites play the role of electrode materials. CNT provides an ideal conducting path to ensure a good charge propagation and can serve as a perfect resilient skeleton with stretchable properties that gives a significant improvement in electrochemical cyclability especially when volumetric changes take place during the charge/discharge processes. In this regard, CNTs have been widely used as the conductive additives or conductive matrix for the anode materials. There are two main strategies to synthesize CNT heterogeneous nanostructures: One is interconnecting the electrode materials with the exterior surface of CNT by various mixing procedures. For example, Zhang et al. (2009) prepared $\text{CNT}@\text{SnO}_2$ hybrid nanostructures with excellent lithium storage performance by uniformly loading SnO_2 nanoparticles onto a cross-stacked CNT network. Xia et al. (2010) prepared caterpillar-like nanoflaky MnO_2/CNT nanocomposites, in which highly porous MnO_2 nanoflakes are uniformly coated on the surface of CNT. This nanoflaky MnO_2/CNT nanocomposite electrode exhibits a large reversible capacity of 801 mAh/g for the first cycle without capacity fading for the first 20 cycles (Figure 26).

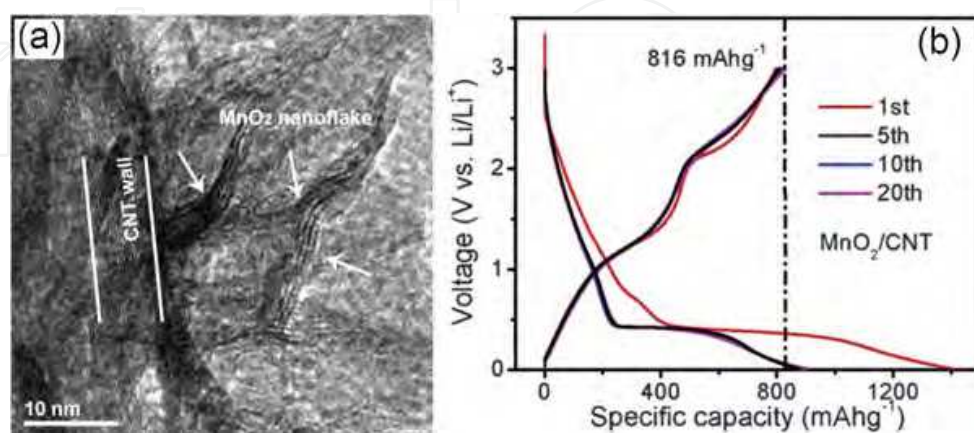


Fig. 26. a) TEM images of one single CNT coated with porous MnO_2 layer; and b) voltage profiles of a MnO_2/CNT nanocomposite electrode cycled between 0.01 and 3 V at a current density of 200 mA/g. (Xia et al., 2010)

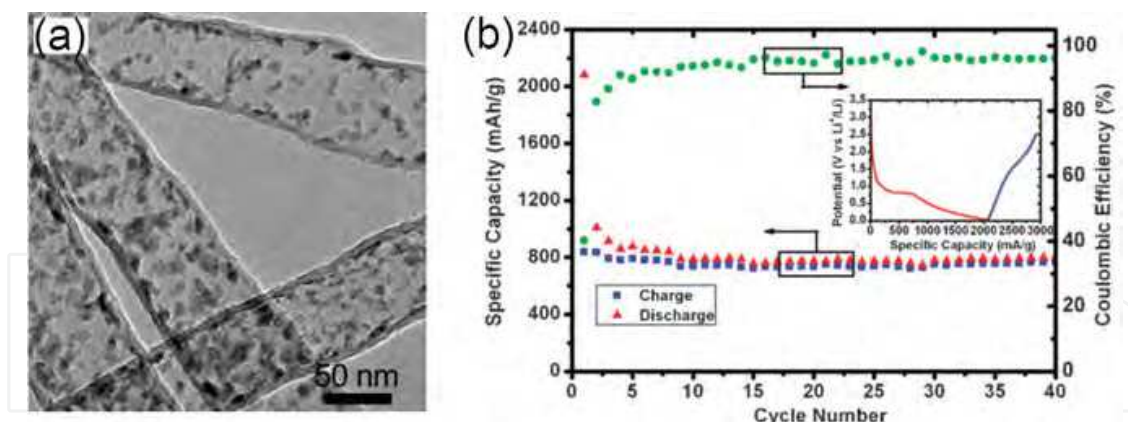


Fig. 27. a) TEM images of the Fe₂O₃-filled CNTs; and b) cycling performance of the Fe₂O₃-filled CNT measured at a rate of 35 mA/g between 0.02 and 2.5 V (vs. Li⁺/Li). (Yu et al., 2010)

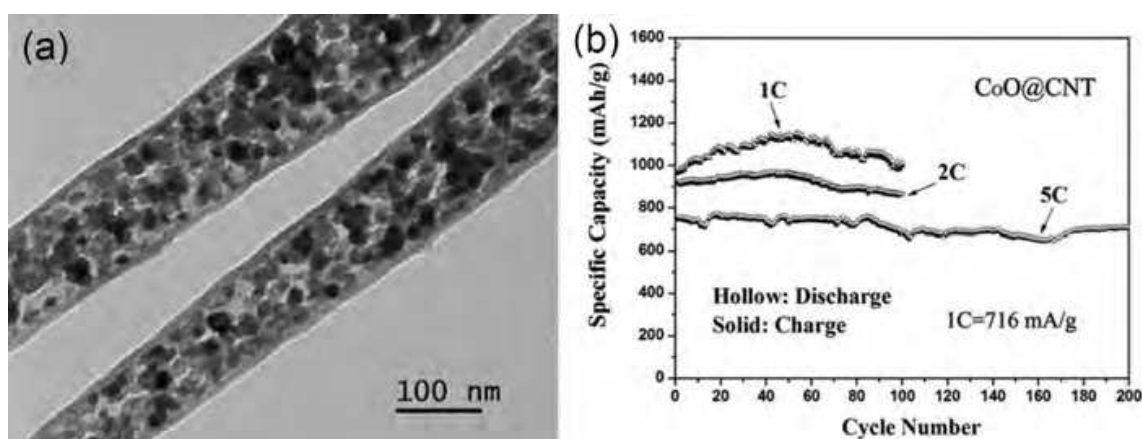


Fig. 28. a) TEM images of CoO@CNT; and b) cycling performance of CoO@CNT at high-rates. (Wu et al., 2011)

The other strategy is encapsulating the electrode materials in the interior space of CNT (Wang et al., 2009; Wu et al., 2010; Yu et al., 2010; Wu et al., 2011). For example, Yu et al. (2010) synthesized Fe₂O₃/CNT nanocomposites by AAO template method. As shown in Figure 27, in this nanocomposite, Fe₂O₃ nanoparticles with a mean diameter of ~9 nm are filled homogeneously into the hollow core of high aspect ratio CNT. The Fe₂O₃-filled CNTs exhibit a high initial discharge capacity of 2081 mAh/g, and a reversible capacity of 768 mAh/g is obtained after 40 cycles, while the Coulombic efficiency steadily keeps at higher than 95%. Fe₂O₃-filled CNTs also show a superior cycling performance and rate capability, which can be attributed to the small size of Fe₂O₃ particles and the confinement effect as well as the good electrical conductivity of CNTs. Very recently, Wu et al. (2011) reported a self-assembled echinus-like nanostructure that consists of mesoporous CoO nanorod@carbon nanotube core-shell materials, as shown in Figure 28a. This core-shell nanostructure shows a high capacity (703–746 mAh/g in 200 cycles) and a long cycle life (0.029% capacity loss per cycle) at a high current rate of 3580 mA/g, as shown in Figure 28b. The excellent electrochemical energy storage should be attributed to the increased electrical conductivity, mechanical stability and electrochemical activity of porous CoO materials in the presence of a carbon nanotube overlayer. This core-shell nanostructure not only

increases the electronic and ionic conductivity due to the presence of highly conductive CNT, but also improves the stability during the repeated ionic intercalation due to the flexible CNT, which act as a buffer to alleviate the volume expansion of metal oxides.

3.1.3 Graphene-based nanocomposites

In the family of carbon nanostructures, graphene is the youngest member but has attracted enormous recent interest. Graphene is a two-dimensional macromolecular sheet of carbon atoms with a honey comb structure. It is an excellent substrate to host active nanomaterials for LIBs applications due to its high conductivity, large surface area, flexibility, and chemical stability. In this regard, chemically modified graphene materials have been used to form the heterogeneous nanostructured materials with Si (Chou et al., 2010), SnO_2 (Paek et al., 2009), Co_3O_4 (Yang et al., 2010), TiO_2 (Li et al., 2011), Fe_2O_3 (Zhu et al., 2011), Mn_3O_4 (Wang et al., 2010), and SnSe_2 (Choi et al., 2011). Improved electrochemical performances are thus achieved, owing to the synergic effect between graphene and active nanoparticles. In these nanocomposites, the ultrathin flexible graphene layers can provide a support for anchoring well-dispersed active nanoparticles and work as a highly conductive matrix for enabling good contact between them, which can also effectively prevent the volume expansion/contraction and aggregation of the active nanoparticles during Li charge/discharge processes. Meanwhile, the anchoring of active nanoparticles on graphene effectively reduces the degree of restacking of graphene sheets and consequently keeps a highly active surface area and to some extent, increases the lithium storage capacity and cyclic performance (Wu et al., 2010). For example, Paek et al. (2009) reported SnO_2 /graphene nanocomposites, in which graphene nanosheets are homogeneously distributed between the loosely packed SnO_2 nanoparticles. This nanocomposite exhibits a charge capacity of 570 mAh/g after 30 cycles with about 70 % retention of the reversible capacity. Recently, Zhang et al. (2010) synthesized Fe_3O_4 /graphene composites by depositing Fe^{3+} in the interspaces of graphene sheets. In the composites, Fe_3O_4 nanoparticles are dispersed on graphene sheets, which show a high reversible capacity, as well as a significantly enhanced cycling performance (about 650 mAh/g after 50 cycles) and high rate capabilities (350 mAh/g at 5 C).

Though graphene sheets can effectively buffer the strain from the volume change of metals or metal oxides during the charge/discharge processes and preserve the high electrical conductivity of the overall electrode, the metal and metal oxide nanoparticles are still prone to strong aggregation during the cycle processes because of non-intimate contact between graphene layers and active nanoparticles, leading to a slow capacity fading. An alternative strategy for solving the aggregation problem of metal and metal oxides is to confine them within individual graphene shells. Yang et al. (2010) reported graphene-encapsulated Co_3O_4 nanoparticles prepared by co-assembly between negatively charged graphene oxide and positively charged oxide nanoparticles. This assembly enables a good encapsulation of electrochemically active metal oxide nanoparticles by graphene sheets, thus leading to a remarkable lithium-storage performance such as highly reversible capacity and excellent cycle performance. A very high and stable reversible capacity of about 1100 mAh/g in the initial 10 cycles, and 1000 mAh/g after 130 cycles is achieved for the graphene-encapsulated Co_3O_4 electrode, which is superior over those of Co_3O_4 /graphene composite or bare Co_3O_4 electrodes (Figure 29).

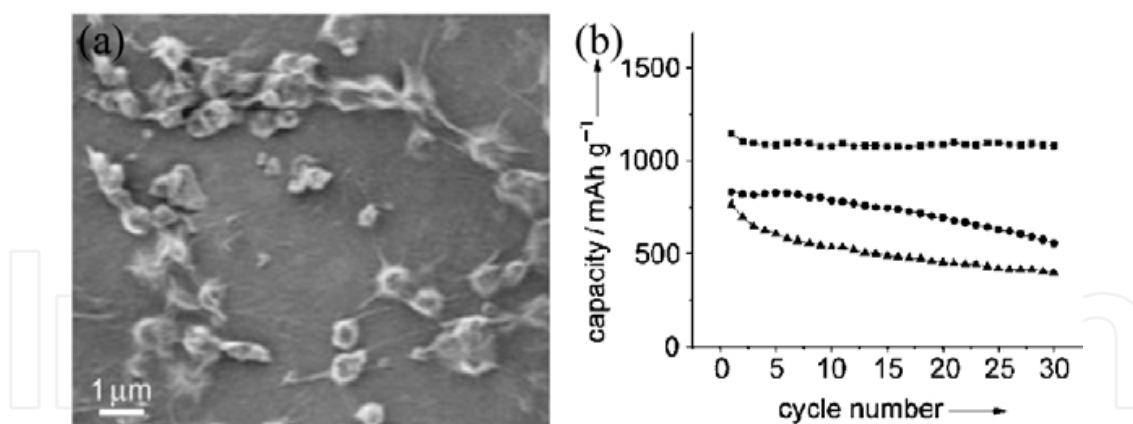


Fig. 29. a) SEM images of graphene-encapsulated Co_3O_4 and b) comparison of the cycle performance of graphene-encapsulated Co_3O_4 (■), mixed Co_3O_4 /graphene composite (●), and bare Co_3O_4 electrodes (▲) over 30 cycles (current density=74 mA/g). (Yang et al. 2010)

3.2 Polymer/inorganic oxides nanocomposites

Heterogeneous nanostructures that consist of the composites of inorganic oxides and organic conducting polymers have been proven to be an effective approach to improve the high-rate electrochemical properties of LIBs. Organic conducting polymers provide a conducting backbone for the nanoscale inorganic oxides and accelerate the charge transfer between them, limit formation of a surface electrochemical interface (SEI) layer to improve the chemical stability, and buffer the stress of the inner nanoscale inorganic oxides to improve the structural stability.

3.2.1 Polypyrrole (PPy)

PPy is a chemical compound formed from a number of connected pyrrole ring structures and it is the first polyacetylene-derivative to show a high conductivity. Chew et al. (2007) reported a novel nano-silicon/PPy composite by chemical polymerization. The cycling stability of Si/PPy electrodes is significantly improved when compared to that of the bare Si anodes. PPy plays a key role in improving the electrochemical performance of the composites: (i) PPy in the composites is a conducting polymer, which increases the conductivity of the samples. (ii) PPy can act as a conductive binder, increasing the contact among particles, therefore the particle-to-particle resistance will be decreased, thus reducing the irreversible reactions with the electrolyte. (iii) PPy is an effective component that buffers the great volume changes during the cycling process, thus improving the cyclability of the Si electrode. Similarly, Cui et al. (2011) have synthesized SnO_2 @PPy nanocomposites by an one-pot oxidative chemical polymerization method. The nanocomposites exhibit high discharge/charge capacities and favourable cycling. For SnO_2 @PPy nanocomposites with 79 wt% SnO_2 , the electrode reaction kinetics is controlled by the diffusion of Li^+ in the nanocomposite. The calculated diffusion coefficient of lithium ions in SnO_2 @PPy nanocomposite with 79 wt% SnO_2 is $6.7 \times 10^{-8} \text{ cm}^2 \text{ s}^{-1}$, while the lithium-alloying activation energy at 0.5 V is 47.3 kJ mol^{-1} , which is obviously lower than that for the bare SnO_2 . The enhanced electrode performance with the SnO_2 @PPy nanocomposite is originated from the advantageous nanostructures that allow a better structural flexibility, shorter diffusion length, and easier interaction with lithium.

3.2.2 Polyaniline (PANI)

PANI is a conducting polymer of the semi-flexible rod polymer family. It has the advantages of ease of fabrication, high conductivity, and good flexibility, so it can be used to prepare the composite anode of varied microstructures. Nickel foam-supported NiO/PANI composites with a porous net-like morphology have been prepared by a chemical bath deposition technique (Huang et al., 2008). These composites are constructed by NiO nanoflakes coated by PANI layer. As an anode for lithium ion batteries, NiO/PANI composites exhibit a weaker polarization as compared to NiO film. The specific capacity after 50 cycles for NiO/PANI film is 520 mAh/g at 1 C, higher than that of 440 mAh/g for NiO film. These improvements are attributed to the fact that PANI enhances the electrical conduction of the electrode and keeps the NiO film stable during cyclings. Similarly, He et al. (2008) prepared SnO₂-PANI composite by microemulsion polymerization method. The composite is composed of amorphous PANI and SnO₂ nanoparticles, in which SnO₂ is coated with PANI. SnO₂-PANI composite to show a reversible capacity of 657.6 mAh/g with a capacity loss per cycle at only 0.092% after 80 cycles. Recently, Cai et al. (2010) reported Si/PANI nanocomposite synthesized by chemical polymerization of aniline and nano-silicon. Si/PANI composite maintains a capacity of 1870 mAh/g up to 25 cycles with a slight loss per cycle, showing an excellent rate performance. The high stable cyclability and improved rate performance are attributed to the fact that the nano-silicon particles are electrically connected by the nest-like PANI so that dispersity of the nano-silicon will be greatly enhanced and the conductivity could be improved. Moreover, Si/PANI composite accommodates a large volume expansion because of the flexible nest-like PANI matrix.

3.2.3 Poly(ethylene glycol) (PEG) /polyethylene oxide (PEO)

PEG or PEO refers to an oligomer or polymer of ethylene oxide. Two names are chemically synonymous, but historically PEG has tended to refer to oligomers and polymers with a molecular mass below 20,000 g/mol, while PEO to polymers with a molecular mass above 20,000 g/mol. PEG or PEO has a chain structure of HO-CH₂-(CH₂-O-CH₂)_n-CH₂-OH. PEG and PEO have been widely investigated as the electrolytes in lithium batteries. The ionic transport mechanism is that Li⁺ ions move from one coordination site to another revolved by the polymer chains. On one hand, the reaction between lithium and PEG is not reversible at ambient conditions. On the other, PEO is stable even in contact with lithium at 60 °C. Hence, until very recently, Xiao et al. (2010) and Xiong et al. (2011) reported the improved lithium storage by introduction of PEO and PEG, respectively, there have been no literature reports that ethylene oxide units in polymers are used for reversible lithium storage. In the case of MoS₂/PEO nanocomposite, PEO is inserted into the interlayer spacing of exfoliated MoS₂ to form Li_{0.12}(PEO)_yMoS₂. A small amount of PEO (Li_{0.12}(PEO)_{0.05}MoS₂) not only doubles the initial capacity of the pristine MoS₂ but significantly improves the capacity retention. This nanocomposite delivers a charge/discharge capacity of above 900 mAh/g after 50 cycles, as shown in Figure 30, during which PEO stabilizes the disordered structure of the exfoliated MoS₂ throughout the cycling regime to accommodate more Li⁺ ions and accelerates the Li⁺ transportation between MoS₂ sheets and electrolyte. While higher amounts of PEO may decrease the lithium accessibility and electronic conductivity, resulting in a higher internal resistance and charge transfer. Xiong et al. reported a novel nanonet that is composed of SnO₂ nanoparticles and PEG chains. The synergic properties and functionalities of these two components enable this composite to exhibit an

unexpectedly high lithium storage over the theoretical capacity of SnO_2 . Lithium is stored in the PEG- SnO_2 nanocomposites, where the crosslinked SnO_2 particles pave the electron paths and the revolved EO segments provide the coordination centers. When the composite electrode is charged, those Li^+ ions coordinated with EO segments are reduced and deposited, and more Li^+ ions from electrolytes will be reduced at this site to form the lithium clusters. When the composite electrode is discharged, lithium clusters transform into Li^+ ions to release the extra capacity.

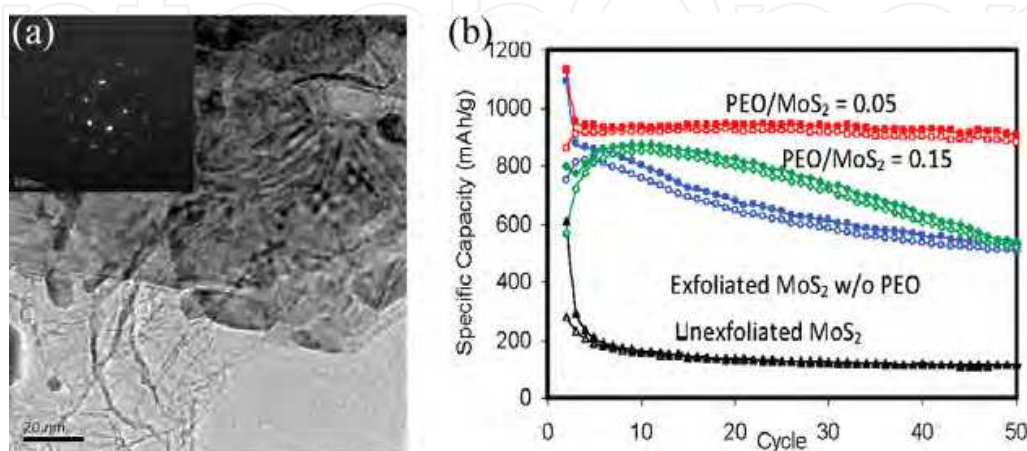


Fig. 30. a) TEM images for exfoliated $\text{PEO}/\text{MoS}_2 = 0.05$ composite; and b) comparison of cycling stability for unexfoliated MoS_2 and exfoliated MoS_2 with different amounts of PEO. All cells were cycled between 0.01 and 3.0 V at 50 mA/g. Solid symbols, Li insertion; open symbols, Li extraction. (Xiao et al., 2010)

3.3 Heterogeneous nanoarchitected thin-film electrodes

Researchers have developed a new structural strategy for high performance electrodes, namely, “nanoarchitected thin-film electrode,” which is composed of a direct growth of highly conductive one-dimensional (1D) metal nanorods onto a metallic current collector followed by attachment of active materials on the surface of 1D metal nanorods. Due to the merit of this unique structure, LIBs can achieve high specific capacities and superior rate capabilities because of the formation of 3D conductive networks by direct connections among active materials, highly conductive 1D pathways, and a metallic current collector. Additionally, the large free space secured by 1D nanostructures effectively alleviates the huge volume changes that occur during Li^+ insertion/extraction, leading to a suppressed electrode degradation (Park et al., 2011). This strategy obviates the use of binders, electron conducting additives, and solvents traditionally used for electrode fabrication. Following this strategy, many heterogeneous nanoarchitected electrodes have been synthesized, such as Sn coated TiO_2 nanotube array (Kim et al., 2010), NiO coated silicon nanowire array (Qiu et al., 2010), carbon-coated ZnO nanorod array (Liu, et al., 2009), MnO_2 /carbon nanotube array (Reddy et al., 2009), Cu_6Sn_5 -coated TiO_2 nanotube arrays (Xue et al., 2011), etc. For example, carbon-coated SnO_2 nanorod array directly grown on Fe-Co-Ni alloy substrate (Ji et al. 2010) shows a good capacity retention at 585 mAh/g after 50 cycles at 500 mA/g and cyclability (stable 320 mAh/g at 3,000 mA/g). Ortiz et al. (2010) fabricated nanoarchitected crystalline SnO nanowires / TiO_2 nanotubes composites electrodes. As shown in Figure 31, the composites consist of tin and SnO nanowires grown onto TiO_2

nanotubes by anodization of titanium and tin electrodeposition. The 2 μm length tin-based nanowires supported on self-organized TiO_2 provide a real capacities of 95 and 140 $\mu\text{A h cm}^{-2}$ ($\sim 675 \text{ mAh/g}$) under high rates of 4 C and 2 C, keeping 70 and 85% initial capacity over 50 cycles, respectively.

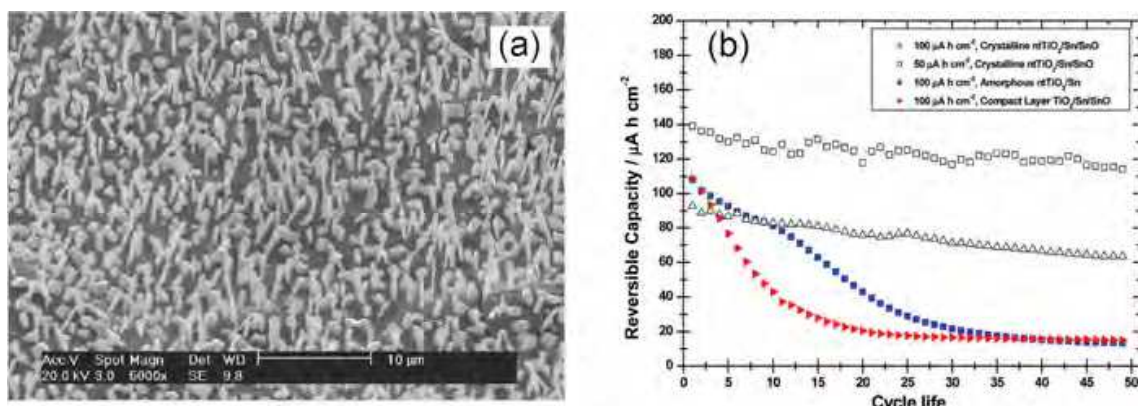


Fig. 31. a) SEM image of tin nanowires supported onto TiO_2 nanotube arrays; and b) cycle life performance under galvanostatic regime at a current density of $100 \mu\text{A cm}^{-2}$. (Ortiz et al., 2010)

These heterogeneous nanoarchitected thin-film electrodes have demonstrated to display a stable capacity over many cycles, whereas an increase in film thickness is urgently required to provide the sufficiently active material because stress-induced cracking would lead to a poor cycling performance and rate capability owing to an increase in film thickness. An alternative strategy for tackling this problem is to design the functional structures that buffer the stress during the charge/discharge processes. Zhang et al. (2010) synthesized a Ni nanocone-array (NCA) supported Si architecture composed of many cylinders with regular domes on top to serve as the anode material for LIBs. In this configuration, Ni NCAs facilitate the charge collection and transport, supporting the electrode structure and acting as the inactive confining buffers. These nanostructured Si electrodes show an impressive electrochemical performance with a high capacity of around 2400 mAh/g at 0.2 C rate over 100 cycles with superior capacity retention of 99.8% per cycle. These Ni NCAs also exhibit an excellent lithium storage capability at high charging and discharging rates of 1 C or 2 C (Figure 32).

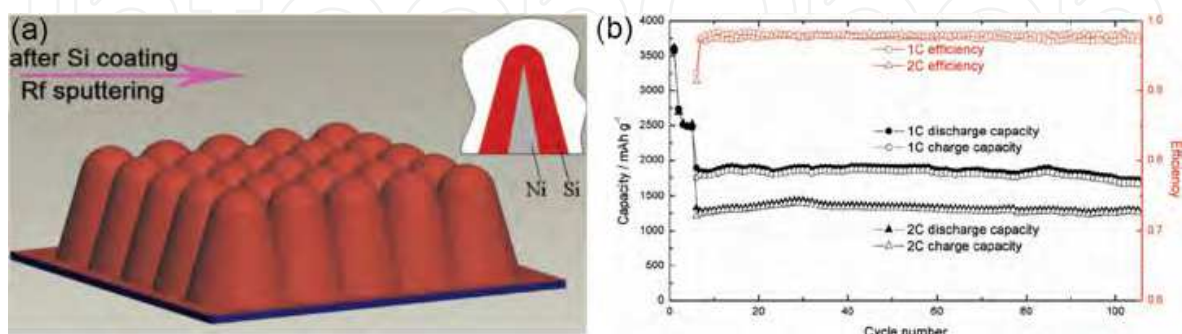


Fig. 32. a) Schematic diagram that illustrates the fabrication of a nickel nanocone-array supported silicon anode architecture; and b) discharge/charge capacity and Coulombic efficiency versus cycle number for a nanostructured Si electrode at 1 C and 2 C rates after 0.2 C for 5 cycles with a cut-off voltage of 10 mV–1.6 V. (Zhang et al., 2010)

Recently, Krishnan et al. (2011) synthesized a functionally strain-graded C-Al-Si anode composite using DC magnetron sputtering. As shown in Figure 33, the composites consist of an array of nanostructures each comprising an amorphous carbon nanorod (~170 nm long) with an intermediate layer of aluminium (~13 nm thick) that is finally capped by a silicon nanoscoop (~40 nm thick) on the very top. The gradation in strain arises from the graded levels of volumetric expansion in these three components on alloying with lithium. The introduction of aluminium as an intermediate layer enables the gradual transition of strain from carbon to silicon, thereby minimizing the mismatch at interfaces between differentially strained materials and enabling the stable operation of electrode under high-rate charge/discharge conditions. C-Al-Si composites can provide an average capacity of about 412 mAh/g with a power output of 100 kW/kg continuously over 100 cycles. Even when the power output is as high as 250 kW/kg, the average capacity over 100 cycles is still at the level of 90 mAh/g.

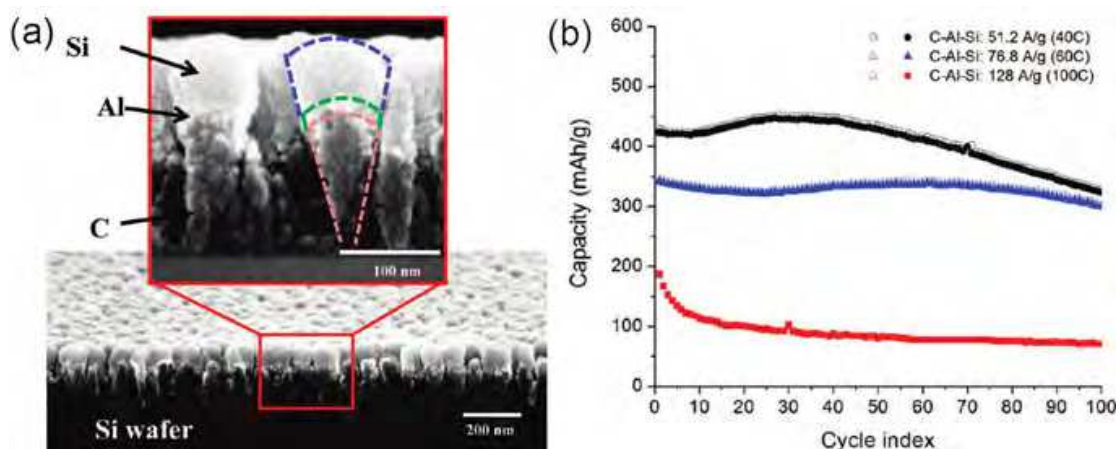


Fig. 33. a) Cross-sectional SEM view of C-Al-Si nanoscoop structures deposited on a Si wafer. A magnified cross-section image is also shown with the C, Al, and Si regions demarcated; and b) Capacity as a function of cycle index shown for C-Al-Si electrodes at 51.2, 76.8, and 128 A/g over 100 cycles. The empty symbols represent the discharge capacity while the filled symbols represent the charge capacity in each case. (Krishnan et al., 2011)

4. Summary and outlook

In this chapter, we have reviewed the recent trends and developments of using heterogeneous nanostructures as the electrode materials for LIBs. It has been illustrated that heterogeneous nanostructured electrodes materials have advantages over the conventional single component nanostructured electrode materials for LIBs, though one has to face some significant challenges before these heterogeneous nanostructured can be large-scale utilized in practical LIBs. There are many novel heterogeneous nanostructured cathode and anode materials that have been reported to show a high rate capability. But the dream is still there as to design and/or develop novel electrodes with much higher performance at high charge/discharge rates.

For example, one has optimized the performance of plenty of LIBs by extensively studying the influences of the morphology, particle size, loading content, and mixing procedure of different components, while the synergic mechanism of heterogeneous nanostructured

components remains to be further clarified and key variables that determine the interface interaction between different components have to be identified. Over the last five years, tremendous progress has been made in addressing these challenges. Through a survey of those studies from the viewpoints of the synergic mechanism of heterogeneous nanostructured components, one can find that maximizing both ion and electron transportations in the cathodes and anodes while maintaining the good cycling stability can be fundamentally important in designing and developing novel electrodes for HEVs, PHEVs or EVs. Despite the variations of the reported performance, a consistent trend has been emerging that high power density of 60 kW/kg and high energy density of 282 Wh/kg for $\text{SnO}_2/\text{V}_2\text{O}_5$ core/shell composite thin-film cathodes and average capacities of ~ 412 mAh/g and a power output of ~ 100 kW/kg for C-Al-Si composites thin-film anodes with rather impressive cycling lifetimes up to 100 cycles at practical charge/discharge rate can be reproducibly achieved. High rate performance and long cycling lifetimes have most frequently been observed when four critical factors are properly addressed: i) use of nanoscale-dimension electroactive materials that allow a rapid lithium ion diffusion; ii) efficient electronic and ionic conduction from electro-active materials to the current collectors that can be maintained during the cycling; iii) incorporation of void/free space or softer inactive material matrices or additives to accommodate the volume variation; iv) good adhesion between different heterogeneous components by constructing special gradient structure can be formed, which can effectively tolerate the different expansion and contraction efficiency of heterogeneous components during the continual lithium insertion/extraction.

Certainly, it is realized that all current heterogeneous nanostructures have their own drawbacks. For example, heterogeneous nanoarchitected thin-film electrodes can become mechanically unstable when grown excessively long in the axial direction. This will limit their uses as on-chip power sources for MEMS devices and other applications where the areal footprint is at a premium and a high areal energy density is needed. Here, we tend to propose a future heterogeneous nanoarchitected thin-film electrode as shown in Figure 34. This proposed heterogeneous nanoarchitected thin-film electrode is composed of a well ordered branched array with a conformal polymer coating layer grown on a conductive substrate. The backbone is an active electrode material, while the branched is active electrode materials with the role of optimizing the lithium ion/electron transportation or inactive electrode materials to depress the side interaction between electrode and electrolyte. The conformal polymer coating layer acts as a conductive layer and binders. There are a few advantages of this proposed structure: (i) the interconnectivity of the electrode material provides a 3-D continuous lithium ion and electron pathway and can increase the mechanical strength of branched arrays; (ii) the interconnected pores accommodate the volume variations of the electrode material and allow the electrolyte to rapidly penetrate and uniformly contact the electrode material; (iii) 3-D interconnected coating of polymer facilitates a fast electron transfer into the 3-D continuous framework, allowing the electrons to directly transport to the electrode materials due to its conformality, effectively alleviating the stress due to its resiliency that ensures mechanically stability for longer arrays, and acting as a binder to strengthen the adhesion between the branched and backbone materials; and (iv) merits of the material being directly contacted with a conductive substrate, in which electrons can easily transfer from the conductive substrate to the electroactive backbone and branched material as well as to the coating conductive polymer shell.

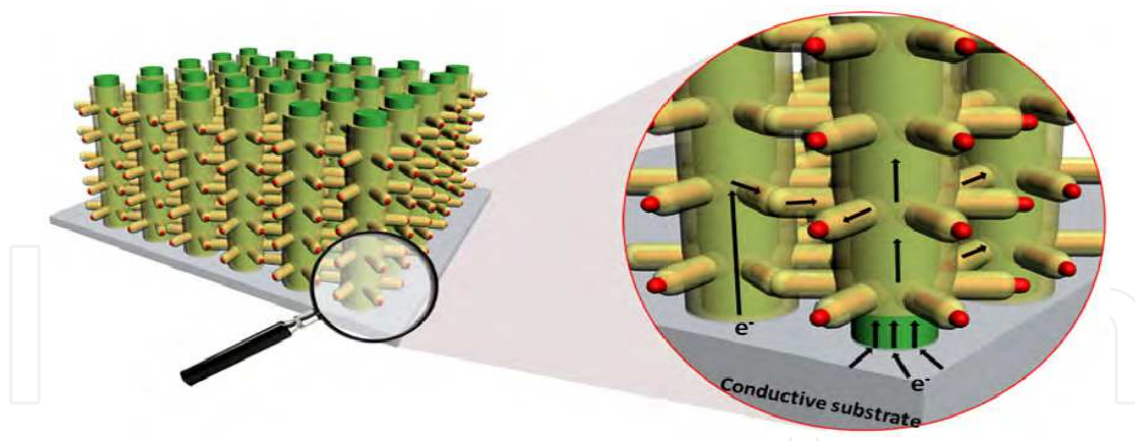


Fig. 34. Future heterogeneous nanoarchitected thin-film electrodes. The backbone material is in green, the branch material in red, and conductive polymer in yellow.

The progress described here suggests that future research should explore more structurally and compositionally complex hierarchical composite nanostructures with internal void/pore space. Considering the potential large-scale energy applications of LIBs, such as in hybrid and plug-in electric vehicles or electrical power storage, mass production possibility, manufacturability, safety factors, and cost of the heterogeneous nanostructured materials will also be important to the eventual success in their practical applications.

It is imperative that we as scientists and engineers put all our efforts into exploiting more technologically advanced heterogeneous nanostructures to fulfil the future requirements of LIBs.

5. Acknowledgment

This work was financially supported by NSFC (No. 91022018, 21025104), National Basic Research Program of China (No. 2011CBA00501, 2011CB935904), Fujian Program (No. 2009HZ0004-1), and FJIRSM fund (No. SZD09003-1, 2010KL002).

6. References

- Alcantara, R.; Jaraba, M.; Lavela, P. & Tirado, J.-L. (2004). X-ray diffraction and electrochemical impedance spectroscopy study of zinc coated $\text{LiNi}_{0.5}\text{Mn}_{1.5}\text{O}_4$ electrodes. *Journal of Electroanalytical Chemistry*, Vol.566, No.1, (May 2004), pp.187–192, ISSN 0022-0728
- Arrebola, J.; Caballero, A.; Hernan, L. & Morales, J. (2010). Re-examining the effect of ZnO on nanosized 5V $\text{LiNi}_{0.5}\text{Mn}_{1.5}\text{O}_4$ spinel: An effective procedure for enhancing its rate capability at room and high temperatures. *Journal of Power Sources*, Vol.195, No.13, (July 2010), pp. 4278–4284, ISSN 0378-7753
- Arrebola, J.; Caballero, A.; Hernan, L.; Morales, J.; Castellon, E.R. & Barrado, J.-R.-R. (2007). Effects of coating with gold on the performance of nanosized $\text{LiNi}_{0.5}\text{Mn}_{1.5}\text{O}_4$ for lithium batteries. *Journal of the Electrochemical Society*, Vol.154, No.3, (January 2007), pp.A178–A184, ISSN 0013-4651
- Arrebola, J.; Caballero, A.; Hernan, L.; Morales, J. & Castellon, E.-R. (2005). Adverse effect of Ag treatment on the electrochemical performance of the 5 V nanometric spinel

- LiNi_{0.5}Mn_{1.5}O₄ in lithium cells. *Electrochemical and Solid State Letters*, Vol.8, No.6, (April 2005), pp.A303–A307, ISSN 1099-0062
- Bakenov, Z. & Taniguchi, I. (2010). Electrochemical performance of nanocomposite LiMnPO₄/C cathode materials for lithium batteries. *Electrochemistry Communications*, Vol.12, No.1, (January 2010), pp. 75–78, ISSN 1388-2481
- Boyano, I.; Blazquez, J.; de Meatza, I.; Bengoechea, M.; Miguel, O.; Grande, H.; Huang, Y. & Goodenough, J. (2010). Preparation of C-LiFePO₄/polypyrrole lithium rechargeable cathode by consecutive potential steps electrodeposition. *Journal of Power Sources*, Vol.195, No.16, (August 2010), pp. 5351–5359, ISSN 0378-7753
- Cai, C.; Pol, V.; Guan, D. & Wang, Y. (2011). Solution processing of V₂O₅-WO₃ composite films for enhanced Li-ion intercalation properties. *Journal of Alloys and Compounds*, Vol.509, No.3, (January 2011), pp. 909–915, ISSN 0925-8388
- Cai, J.-J.; Zuo, P.-J.; Cheng, X.-Q.; Xu, Y.-H. & Yin, G.-P. (2010). Nano-silicon/polyaniline composite for lithium storage. *Electrochemistry Communications*, Vol.12, No.11, (November 2010), pp. 1572–1575, ISSN 1388-2481
- Cao, A.-M.; Hu, J.-S.; Liang, H.-P. & Wan, L.-J. (2005). Self-assembled vanadium pentoxide (V₂O₅) hollow microspheres from nanorods and their application in lithium-ion batteries. *Angewandte Chemie-International Edition*, Vol.44, No.28, (June 2005), pp.4391–4395, ISSN 1433-7851
- Chan, C.; Peng, H.; Twisten, R.; Jarausch, K.; Zhang, X. & Cui, Y. (2007). Fast, completely reversible Li insertion in vanadium pentoxide nanoribbons. *Nano Letters*, Vol.7, No.2, (February 2007), pp. 490–495, ISSN 1530-6984
- Chew, S.-Y.; Guo, Z.-P.; Wang, J.-Z.; Chen, J.; Munroe, P.; Ng, S.-H.; Zhao, L. & Liu, H.-K. (2007). Novel nano-silicon/polypyrrole composites for lithium storage. *Electrochemistry Communications*, Vol.9, No.5, (May 2007), pp. 941–946, ISSN 1388-2481
- Chen, W.; Qie, L.; Yuan, L.; Xia, S.; Hu, X.; Zhang, W. & Huang, Y. (2011). Insight into the improvement of rate capability and cyclability in LiFePO₄/polyaniline composite cathode. *Electrochimica Acta*, Vol.56, No.6, (February 2011), pp. 2689–2695, ISSN 0013-4686
- Chen, Z.-H. & Dahn, J.-R. (2002). Effect of a ZrO₂ coating on the structure and electrochemistry of Li_xCoO₂ when cycled to 4.5 V. *Electrochemical and Solid State Letters*, Vol.5, No.10, (October 2002), pp.A213–A216, ISSN 1099-0062
- Choi, J.; Jin, J.; Jung, I.-G.; Kim, J.-M.; Kim, H.-J. & Son, S.-U. (2011). SnSe₂ nanoplate-graphene composites as anode materials for lithium ion batteries. *Chemical Communications*, Vol.47, No.18, (March 2011), pp.5241–5243, ISSN 1359-7345
- Choi, K.; Jeon, J.; Park, H. & Lee, S. (2010). Electrochemical performance and thermal stability of LiCoO₂ cathodes surface-modified with a sputtered thin film of lithium phosphorus oxynitride. *Journal of Power Sources*, Vol.195, No.24, (December 2010), pp. 8317–8321, ISSN 0378-7753
- Chou, S.-L.; Wang, J.-Z.; Choucair, M.; Liu, H.-K.; Stride, J.-A. & Dou, S.-X. (2010). Enhanced reversible lithium storage in a nanosize silicon/graphene composite. *Electrochemistry Communications*, Vol.12, No.2, (February 2010), pp.303–306, ISSN 1388-2481
- Cui, L.; Shen, J.; Cheng, F.; Tao, Z. & Chen, J. (2011). SnO₂ nanoparticles@polypyrrole nanowires composite as anode materials for rechargeable lithium-ion batteries.

- Journal of Power Sources*, Vol.196, No.4, (February 2011), pp. 2195–2201, ISSN 0378-7753
- Dimesso, L.; Jacke, S.; Spanheimer, C. & Jaegermann, W. (2011). Investigation on 3-dimensional carbon foams/LiFePO₄ composites as function of the annealing time under inert atmosphere. *Journal of Alloys and Compounds*, Vol.509, No.9, (March 2011), pp. 3777–3782, ISSN 0925-8388
- Ding, Y.-L.; Xie, J.; Cao, G.-S.; Zhu, T.-J.; Yu, H.-M. & Zhao, X.-B. (2011). Single-crystalline LiMn₂O₄ nanotubes synthesized via template-engaged reaction as cathodes for high-power lithium ion batteries. *Advanced Functional Materials*, Vol.21, No.2, (January 2011), pp. 384–355, ISSN 1616-301X
- Drezen, T.; Kwon, N.; Bowen, P.; Teerlinck, I.; Isono, M. & Exnar, I. (2007). Effect of particle size on LiMnPO₄ cathodes. *Journal of Power Sources*, Vol.174, No.2, (December 2007), pp. 949–953, ISSN 0378-7753
- Ellis, B.; Lee, K. & Nazar, L. (2010). Positive Electrode Materials for Li-Ion and Li-Batteries. *Chemistry of Materials*, Vol.22, No.3, (February 2010), pp. 691–714, ISSN 0897-4756
- Fan, Y.; Wang, J.; Tang, Z.; He, W. & Zhang, J. (2007). Effects of the nanostructured SiO₂ coating on the performance of LiNi_{0.5}Mn_{1.5}O₄ cathode materials for high-voltage Li-ion batteries. *Electrochimica Acta*, Vol.52, No.11, (March 2007), pp. 3870–3875, ISSN 0013-4686
- Fang, H.; Li, L. & Li, G. (2007). A low-temperature reaction route to high rate and high capacity LiNi_{0.5}Mn_{1.5}O₄. *Journal of Power Sources*, Vol.167, No.1, (May 2007), pp. 223–227, ISSN 0378-7753
- Fang, H.; Li, L. & Li, G. (2007). Hydrothermal synthesis of electrochemically active LiMnPO₄. *Chemistry Letters*, Vol.36, No.3, (March 2007), pp. 436–437, ISSN 0366-7022
- Fang, H.; Li, L.; Yang, Y.; Yan, G. & Li, G. (2008). Low-temperature synthesis of highly crystallized LiMn₂O₄ from alpha manganese dioxide nanorods. *Journal of Power Sources*, Vol.184, No.2, (October 2008), pp. 494–497, ISSN 0378-7753
- Guo, Y.; Hu, J. & Wan L. (2008). Nanostructured Materials for Electrochemical Energy Conversion and Storage Devices. *Advanced Materials*, Vol.20, No.23, (December 2008), pp. 2878–2887, ISSN 0935-9648
- Ha, H.-W.; Yun, N.-J.; Kim, M.-H.; Woo, M.-H. & Kim, K. (2006). Enhanced electrochemical and thermal stability of surface-modified LiCoO₂ cathode by CeO₂ coating. *Electrochimica Acta*, Vol.51, No.16, (April 2006), pp.3297–3302, ISSN 0013-4686
- He, Z.-Q.; Xiong, L.-Z.; Liu, W.-P.; Wu, X.-M.; Chen, S. & Huang, K.-L. (2008). Synthesis and electrochemical properties of SnO₂-polyaniline composite. *Journal of Central South University Technology*, Vol.15, No.2, (April 2008), pp. 214–217, ISSN 1005-9784
- Huang, H.; Yin, S. & Nazar, L. (2001). Approaching theoretical capacity of LiFePO₄ at room temperature at high rates. *Electrochemical and Solid State Letters*, Vol.4, No.10, (October 2001), pp. A170–A172, ISSN 1099-0062
- Huang, X.-H.; Tu, J.-P.; Xia, X.-H.; Wang, X.-L. & Xiang, J.-Y. (2008). Nickel foam-supported porous NiO/polyaniline film as anode for lithium ion batteries. *Electrochemistry Communications*, Vol.10, No.9, (September 2008), pp. 1288–1290, ISSN 1388-2481
- Huang, Y. & Goodenough, J. (2008). High-rate LiFePO₄ lithium rechargeable battery promoted by electrochemically active polymers. *Chemistry of Materials*, Vol.20, No.23, (December 2008), pp. 7237–7241, ISSN 0897-4756

- Hu, S.-K.; Cheng, G.-H.; Cheng, M.-Y.; Hwang, B.J. & Santhanam, R. (2009). Cycle life improvement of ZrO_2 -coated spherical $\text{LiNi}_{1/3}\text{Co}_{1/3}\text{Mn}_{1/3}\text{O}_2$ cathode material for lithium ion batteries. *Journal of Power Sources*, Vol.188, No.2, (March 2009), pp.564–569, ISSN 0378-7753
- Ji, X.; Huang, X.; Liu, J.; Jiang, J.; Lin, X.; Ding, R.; Hu, Y.; Wu, F. & Li, Q. (2010). Carbon-coated SnO_2 nanorod array for lithium-ion battery anode material. *Nanoscale Research Letters*, Vol.5, No.3, (March 2010), pp.649–653, ISSN 1931-7573
- Jung, K.-H.; Kim, H.-G. & Park, Y.-J. (2011). Effects of protecting layer $[\text{Li},\text{La}]\text{TiO}_3$ on electrochemical properties of LiMn_2O_4 for lithium batteries. *Journal of Alloys and Compounds*, Vol.509, No.12, (March 2011), pp. 4426–4432, ISSN 0925-8388
- Kang, H.-B.; Myung, S.-T.; Amine, K.; Lee, S.-M. & Sun, Y.-K. (2010). Improved electrochemical properties of BiOF -coated 5V spinel $\text{Li}[\text{Ni}_{0.5}\text{Mn}_{1.5}]\text{O}_4$ for rechargeable lithium batteries. *Journal of Power Sources*, Vol.195, No.7, (April 2010), pp. 2023–2028, ISSN 0378-7753
- Kim, B.; Kim, C.; Ahn, D.; Moon, T.; Ahn, J.; Park, Y. & Park, B. (2007). Nanostructural effect of AlPO_4 -nanoparticle coating on the cycle-life performance in LiCoO_2 thin films. *Electrochemical and Solid-State Letters*, Vol.10, No.2, (December 2006), pp. A32–A35, ISSN 1099-0062
- Kim, B.; Kim, C.; Kim, T.-G.; Ahn, D. & Park, B. (2006). The effect of AlPO_4 -coating layer on the electrochemical properties in LiCoO_2 thin films. *Journal of the Electrochemical Society*, Vol.153, No.9, (July 2006), pp.A1773–A1777, ISSN 0013-4651
- Kim, H.-S.; Kang, S.-H.; Chung, Y.-H. & Sung, Y.-E. (2010). Conformal Sn coated TiO_2 nanotube arrays and its electrochemical performance for high rate lithium-ion batteries. *Electrochemical and Solid-State Letters*, Vol.13, No.2, (November 2009), pp.A15–A18, ISSN 1099-0062
- Koenig, G.-M.; Belharouak, I.; Deng, H.; Sun, Y. & Amine, K. (2011). Composition-tailored synthesis of gradient transition metal precursor particles for lithium-ion battery cathode materials. *Chemistry of Materials*, Vol.23, No.7, (April 2011), pp. 1954–1963, ISSN 0897-4756
- Koltypin, M.; Pol, V.; Gedanken, A. & Aurbach, D. (2007). The study of carbon-coated V_2O_5 nanoparticles as a potential cathodic material for Li rechargeable batteries. *Journal of the Electrochemical Society*, Vol.154, No.7, (May 2007), pp. A605–A613, ISSN 0013-4651
- Konarova, M. & Taniguchi, I. (2008). Preparation of LiFePO_4/C composite powders by ultrasonic spray pyrolysis followed by heat treatment and their electrochemical properties. *Materials Research Bulletin*, Vol.43, No.12, (December 2008), pp. 3305–3317, ISSN 0025-5408
- Krishnan, R.; Lu, T.-M. & Koratkar, N. (2011). Functionally strain-graded nanoscoops for high power Li-ion battery anodes. *Nano Letters*, Vol.11, No.2, (December 2010), pp. 377–384, ISSN 1530-6984
- Lee, H.-W.; Muralidharan, P.; Ruffo, R.; Mari, C.; Cui, Y. & Kim, D. (2010). Ultrathin spinel LiMn_2O_4 nanowires as high power cathode materials for Li-ion batteries. *Nano Letters*, Vol.10, No.10, (October 2010), pp. 3852–3856, ISSN 1530-6984
- Lepage, D.; Michot, C.; Liang, G.; Gauthier, M. & Schougaard, S. (2011). A Soft Chemistry Approach to Coating of LiFePO_4 with a Conducting Polymer. *Angewandte Chemie-International Edition*, DOI: 10.1002/anie.201101661, ISSN 1433-7851

- Liang, M. & Zhi L. (2009). Graphene-based electrode materials for rechargeable lithium batteries. *Journal of Materials Chemistry*, Vol.19, No.33, (May 2009), pp. 5871–5878, ISSN 0959-9428
- Li, N.; Liu, G.; Zhen, C.; Li, F.; Zhang, L.-L. & Cheng, H.-M. (2011). Battery performance and photocatalytic activity of mesoporous anatase TiO₂ nanospheres/graphene composites by template-free self-assembly. *Advanced Functional Materials*, Vol.21, No.9, (May 2011), pp.1717–1722, ISSN 1616-301X
- Li, J.; Klopsch, R.; Stan, M.-C.; Nowak, S.; Kunze, M.; Winter, M. & Passerini, S. (2011). Synthesis and electrochemical performance of the high voltage cathode material Li[Li_{0.2}Mn_{0.56}Ni_{0.16}Co_{0.08}]O₂ with improved rate capability. *Journal of Power Sources*, Vol.196, No.10, (May 2011), pp.4821–4825, ISSN 0378-7753
- Liu, D.-Q.; Liu, X.-Q. & He, Z.-Z. (2007). The elevated temperature performance of LiMn₂O₄ coated with Li₄Ti₅O₁₂ for lithium ion battery. *Materials Chemistry and Physics*, Vol.105, No.2-3, (October 2007), pp. 362–366, ISSN 0254-0584
- Liu, G.-Q.; Kuo, H.-T.; Liu, R.-S.; Shen, C.-H.; Shy, D.-S.; Xing, X.-K. & Chen, J.-M. (2010). Study of electrochemical properties of coating ZrO₂ on LiCoO₂. *Journal of Alloys and Compounds*, Vol.496, No.1-2, (April 2010), pp.512–516, ISSN 0925-8388
- Liu, J.; Li, Y.; Ding, R.; Jiang, J.; Hu, Y.; Ji, X.; Chi, Q.; Zhu, Z. & Huang, X. (2009). Carbon/ZnO nanorod array electrode with significantly improved lithium storage capability. *Journal of Physical Chemistry C*, Vol.113, No.13, (April 2009), pp.5336–5339, ISSN 1932-7447
- Liu, J. & Manthiram, A. (2009). Understanding the improvement in the electrochemical properties of surface modified 5 V LiMn_{1.42}Ni_{0.42}Co_{0.16}O₄ spinel cathodes in lithium-ion cells. *Chemistry of Materials*, Vol.21, No.8, (April 2009), pp.1695–1707, ISSN 0897-4756
- Liu, R.; Duay, J. & Lee, S. (2011). Heterogeneous nanostructured electrode materials for electrochemical energy storage. *Chemical Communications*, Vol.47, No.5, (November 2010), pp. 1384–1404, ISSN 1359-7345
- Lou, X.; Li, C. & Archer, L. (2009). Designed synthesis of coaxial SnO₂@carbon hollow nanospheres for highly reversible lithium storage. *Advanced Materials*, Vol.21, No.24, (June 2009), pp. 2536–2539, ISSN 0935-9648
- Martha, S.-K.; Markovsky, B.; Grinblat, J.; Gofer, Y.; Haik, O.; Zinigrad, E.; Aurbach, D.; Drezen, T.; Wang, D.; Deghenghi, G. & Exnar, I. (2009). LiMnPO₄ as an advanced cathode material for rechargeable lithium batteries. *Journal of the Electrochemical Society*, Vol.156, No.7, (May 2009), pp. A541–A552, ISSN 0013-4651
- Murugan, A.; Muraliganth, T. & Manthiram, A. (2008). Rapid microwave-solvothermal synthesis of phospho-olivine nanorods and their coating with a mixed conducting polymer for lithium ion batteries. *Electrochemistry Communications*, Vol.10, No.6, (January 2008), pp. 903–906, ISSN 1388-2481
- Odani, A.; Pol, V.; Plo, S.; Koltypin, M.; Gedanken, A. & Aurbach, D. (2006). Testing carbon-coated VO_x prepared via reaction under autogenic pressure at elevated temperature as Li-insertion materials. *Advanced Materials*, Vol.18, No.11, (June 2006), pp. 1431–1436, ISSN 0935-9648
- Oh, S.-M.; Oh, S.-W.; Yoon, C.-S.; Scrosati, B.; Amine, K. & Sun, Y.-K. (2010). High-performance carbon-LiMnPO₄ nanocomposite cathode for lithium batteries.

- Advanced Functional Materials*, Vol.20, No.19, (October 2010), pp. 3260–3265, ISSN 1616-301X
- Oh, Y.; Ahn, D.; Nam, S. & Park, B. (2010). The effect of Al_2O_3 -coating coverage on the electrochemical properties in LiCoO_2 thin films. *Journal of Solid State Electrochemistry*, Vol.14, No.7, (July 2010), pp. 1235–1240, ISSN 1432-8488
- Ortiz, G.; Hanzu, I.; Lavela, P.; Knauth, P.; Tirado, J. & Djenizian, T. (2010). Nanoarchitected TiO_2/SnO : a future negative electrode for high power density Li-ion microbatteries? *Chemistry of Materials*, Vol.22, No.5, (March 2010), pp.1926–1932, ISSN 0897-4756
- Ouyang, C.; Zeng, X.; Sijivancanin, Z. & Baldereschi, A. (2010). Oxidation states of Mn atoms at clean and Al_2O_3 -covered $\text{LiMn}_2\text{O}_4(001)$ surfaces. *Journal of Physical Chemistry C*, Vol.114, No.10, (March 2010), pp. 4756–4759, ISSN 1932-7447
- Paek, S.-M.; Yoo, E. & Honma, I. (2009). Enhanced cyclic performance and lithium storage capacity of SnO_2 /graphene nanoporous electrodes with three-dimensionally delaminated flexible structure. *Nano Letters*, Vol.9, No.1, (January 2009), pp. 72–75, ISSN 1530-6984
- Padhi, A.; Nanjundaswamy, K. & Goodenough, J. (1997). Phospho-olivines as positive-electrode materials for rechargeable lithium batteries. *Journal of the Electrochemical Society*, Vol.144, No.4, (April 1997), pp. 1188–1194, ISSN 0013-4651
- Park, K.-S.; Kang, J.-G.; Choi, Y.-J.; Lee, S.; Kim, D.-W. & Park, J.-G. (2011). Long-term, high-rate lithium storage capabilities of TiO_2 nanostructured electrodes using 3D self-supported indium tin oxide conducting nanowire arrays. *Energy & Environmental Science*, Vol.4, No.5, (May 2011), pp.1796–1801, ISSN 1754-5692
- Peng, W.; Jiao, L.; Gao, H.; Qi, Z.; Wang, Q.; Du, H.; Si, Y.; Wang, Y. & Yuan, H. (2011). A novel sol-gel method based on $\text{FePO}_4 \cdot 2\text{H}_2\text{O}$ to synthesize submicrometer structured LiFePO_4/C cathode material. *Journal of Power Sources*, Vol.196, No.5, (March 2011), pp. 2841–2847, ISSN 0378-7753
- Posudievsky, O.; Kozarenko, O.; Dyadyun, V.; Jorgensen, S.; Spearot, J.; Koshechko, V. & Pokhodenko, V. (2011). Characteristics of mechanochemically prepared host-guest hybrid nanocomposites of vanadium oxide and conducting polymers. *Journal of Power Sources*, Vol.196, No.6, (March 2011), pp. 3331–3341, ISSN 0378-7753
- Qiu, M.-C.; Yang, L.-W.; Qi, X.; Li, J. & Zhong, J.-X. (2010). Fabrication of ordered NiO coated Si nanowire array films as electrodes for a high performance lithium ion battery. *Applied Materials & Interfaces*, Vol.2, No.12, (December 2010), pp.3614–3618, ISSN 1944-8244
- Reddy, A.-L.-M.; Shaijumon, M.-M.; Gowda, S.-R. & Ajayan, P.-M. (2009). Coaxial MnO_2 /carbon nanotube array electrodes for high-performance lithium batteries. *Nano Letters*, Vol.9, No.3, (March 2009), pp.1002–1006, ISSN 1530-6984
- Sahan, H.; Goktepe, H.; Patat, S. & Ulgen, A. (2008). The effect of LBO coating method on electrochemical performance of LiMn_2O_4 cathode material. *Solid State Ionics*, Vol.178, No.35-36, (February 2008), pp. 1837–1842, ISSN 0167-2738
- Santhanam, R. & Rambabu, B. (2010). Research progress in high voltage spinel $\text{LiNi}_{0.5}\text{Mn}_{1.5}\text{O}_4$ materials. *Journal of Power Sources*, Vol.195, No.17, (May 2010), pp.5442–5451, ISSN 0378-7753

- Scott, I.; Jung, Y.; Cavanagh, A.; Yan, Y.; Dillon, A.; George, S. & Lee, S. (2011). Ultrathin coatings on nano-LiCoO₂ for Li-ion vehicular applications. *Nano Letters*, Vol.11, No.2, (February 2011), pp. 414–418, ISSN 1530-6984
- Sides, C.-R. & Martin, C.-R. (2005). Nanostructured electrodes and the low-temperature performance of Li-ion batteries. *Advanced Materials*, Vol.17, No.1, (January 2005), pp. 125–128, ISSN 0935-9648
- Sun, Y.-K.; Lee, Y.-S.; Yoshio, M. & Amine, K. (2002). Synthesis and electrochemical properties of ZnO-coated LiNi_{0.5}Mn_{1.5}O₄ spinel as 5 V cathode material for lithium secondary batteries. *Electrochemical and Solid State Letters*, Vol.5, No.5, (May 2002), pp.A99–A102, ISSN 1099-0062
- Sun, Y.; Myung, S.; Kim, M.; Prakash, J. & Amine, K. (2005). Synthesis and characterization of Li[(Ni_{0.8}Co_{0.1}Mn_{0.1})_{0.8}(Ni_{0.5}Mn_{0.5})_{0.2}]O₂ with the microscale core-shell structure as the positive electrode material for lithium batteries. *Journal of the American Chemical Society*, Vol.127, No.38, (September 2005), pp. 13411–13418, ISSN 0002-7863
- Sun, Y.; Myung, S.; Park, B.; Prakash, J.; Belharouak, I. & Amine, K. (2009). High-energy cathode material for long-life and safe lithium batteries. *Nature Material*, Vol.8, No.4, (April 2009), pp. 320–324, ISSN 1476-1122
- Takahashi, K.; Wang, Y. & Cao, G. (2006). Fabrication and Li⁺-intercalation properties of V₂O₅-TiO₂ composite nanorod arrays. *Applied Physics A-Materials Science & Processing*, Vol.82, No.1, (January 2006), pp.27–31, ISSN 0947-8396
- Thackeray, M.-M.; Kang, S.-H.; Johnson, C.-S.; Vaughey, J.T.; Benedek, R. & Kackney, S.A. (2007). Li₂MnO₃-stabilized LiMO₂ (M = Mn, Ni, Co) electrodes for lithium-ion batteries. *Journal of Materials Chemistry*, Vol.17, No.30, (April 2007), pp.3112–3125, ISSN 0959-9428
- Vu, A. & Stein, A. (2011). Multiconstituent Synthesis of LiFePO₄/C Composites with Hierarchical Porosity as Cathode Materials for Lithium Ion Batteries. *Chemistry of Materials*, DOI: 10.1021/cm201197j, ISSN 0897-4756
- Wang, G.; Yang, L.; Chen, Y.; Wang, J.; Bewlay, S. & Liu, H. (2005). An investigation of polypyrrole-LiFePO₄ composite cathode materials for lithium-ion batteries. *Electrochimica Acta*, Vol.50, No.24, (August 2005), pp. 4649–4654, ISSN 0013-4686
- Wang, H.-L.; Cui, L.-F.; Yang, Y.-A.; Casalongue, H.-S.; Robinson, J.-T.; Liang, Y.-Y.; Cui, Y. & Dai, H.-J. (2010). Mn₃O₄-graphene hybrid as a high-capacity anode material for lithium ion batteries. *Journal of the American Chemical Society*, Vol.132, No.40, (October 2010), pp.13978–13980, ISSN 0002-7863
- Wang, H.; Zhang, W.; Zhu, L. & Chen, M. (2007). Effect of LiFePO₄ coating on electrochemical performance of LiCoO₂ at high temperature. *Solid State Ionics*, Vol.178, No.1-2, (January 2007), pp. 131–136, ISSN 0167-2738
- Wang, Y. & Cao, G. (2008). Developments in nanostructured cathode materials for high-performance lithium-ion batteries. *Advanced Materials*, Vol.20, No.12, (June 2008), pp. 2251–2269, ISSN 0935-9648
- Wang, Y.; Wang, Y.; Hosono, E.; Wang, K. & Zhou, H. (2008). The design of a LiFePO₄/carbon nanocomposite with a core-shell structure and its synthesis by an in situ polymerization restriction method. *Angewandte Chemie-International Edition*, Vol.47, No.39, (August 2008), pp. 7461–7465, ISSN 1433-7851

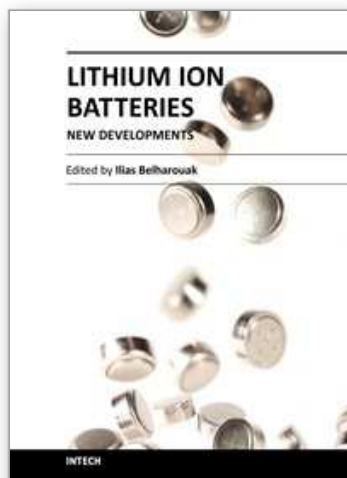
- Wang, Y.; Wu, M.; Jiao, Z. & Lee, J. (2009). Sn@CNT and Sn@C@CNT nanostructures for superior reversible lithium ion storage. *Chemistry of Materials*, Vol.21, No.14, (July 2009), pp. 3210–3215, ISSN 0897-4756
- Winter, M.; Besenhard, J.; Spahr, M. & Novak, P. (1998). Insertion electrode materials for rechargeable lithium batteries. *Advanced Materials*, Vol.10, No.10, (July 1998), pp. 725–763, ISSN 0935-9648
- Wu, F. & Wang, Y. (2011). Self-assembled echinus-like nanostructures of mesoporous CoO nanorod@CNT for lithium-ion batteries. *Journal of Materials Chemistry*, Vol.21, No.18, (March 2011), pp. 6636–6641, ISSN 0959-9428
- Wu, H.-M.; Belharouak, I.; Abouimrane, A.; Sun, Y.-K. & Amine, K. (2010). Surface modification of $\text{LiNi}_{0.5}\text{Mn}_{1.5}\text{O}_4$ by ZrP_2O_7 and ZrO_2 . *Journal of Power Sources*, Vol.195, No.9, (May 2010), pp.2909–2913, ISSN 0378-7753
- Wu, P.; Du, N.; Zhang, H.; Yu, J. & Yang, D. (2010). CNTs@ SnO_2 @C coaxial nanocables with highly reversible lithium storage. *Journal of Physical Chemistry C*, Vol.114, No.51, (December 2010), pp. 22535–22538, ISSN 1932-7447
- Wu, Z.; Ren, W.; Wen, L.; Gao, L.; Zhao, J.; Chen, Z.; Zhou, G.; Li, F. & Cheng, H. (2010). Graphene anchored with Co_3O_4 nanoparticles as anode of lithium ion batteries with enhanced reversible capacity and cyclic performance. *ACS Nano*, Vol.4, No.6, (January 2010), pp. 3187–3194, ISSN 1936-0851
- Wu, Z.-S.; Ren, W.; Wen, L.; Gao, L.; Zhao, J.; Chen, Z.; Zhou, G.; Li, F. & Cheng, H.-M. (2010). Graphene anchored with Co_3O_4 nanoparticles as anode of lithium ion batteries with enhanced reversible capacity and cyclic performance. *ACS Nano*, Vol.4, No.6, (June 2010), pp. 3187–3194, ISSN 1936-0851
- Xia, H.; Meng, Y.-S.; Lu, L. & Ceder, G. (2007). Electrochemical properties of nonstoichiometric $\text{LiNi}_{0.5}\text{Mn}_{1.5}\text{O}_{4-\delta}$ thin-film electrodes prepared by pulsed laser deposition. *Journal of the Electrochemical Society*, Vol.154, No.8, (May 2007), pp.A737–A743, ISSN 0013-4651
- Xiao, J.; Choi, D.; Cosimbescu, L.; Koech, P.; Liu, J. & Lemmon, J.-P. (2010). Exfoliated MoS_2 nanocomposite as an anode material for lithium ion batteries. *Chemistry of Materials*, Vol.22, No.16, (August 2010), pp. 4522–4524, ISSN 0897-4756
- Xiong, H.; Shen, W.; Guo, B.; Bo, S.; Cui, W.; Chen, L.; Li, H. & Xia, Y. (2011). Anomalous lithium storage in a novel nanonet composed by SnO_2 nanoparticles and poly(ethylene glycol) chains. *Journal of Materials Chemistry*, Vol.21, No.9, (January 2011), pp. 2845–2847, ISSN 0959-9428
- Xue, L.; Wei, Z.; Li, R.; Liu, J.; Huang, T. & Yu, A. (2011). Design and synthesis of Cu_6Sn_5 -coated TiO_2 nanotube arrays as anode material for lithium ion batteries. *Journal of Materials Chemistry*, Vol.21, No.9, (January 2011), pp.3216–3220, ISSN 0959-9428
- Yamada, H.; Tagawa, K.; Komatsu, M.; Moriguchi, I. & Kudo, T. (2007). High power battery electrodes using nanoporous V_2O_5 /carbon composites. *Journal of Physical Chemistry C*, Vol.111, No.23, (June 2007), pp. 8397–8402, ISSN 1932-7447
- Yang, S.; Feng, X.; Ivanovici, S. & Mullen, K. (2010). Fabrication of graphene-encapsulated oxide nanoparticles: towards high-performance anode materials for lithium storage. *Angewandte Chemie-International Edition*, Vol.49, No.45, (September 2010), pp. 8408–8411, ISSN 1433-7851

- Yang, T.; Zhang, N.; Lang, Y. & Sun, K. (2011). Enhanced rate performance of carbon-coated $\text{LiNi}_{0.5}\text{Mn}_{1.5}\text{O}_4$ cathode material for lithium ion batteries. *Electrochimica Acta*, Vol.56, No.11, (April 2011), pp. 4058–4064, ISSN 0013-4686
- Yang, Z.; Du, G.; Guo, Z.; Yu, X.; Chen, Z.; Guo, T. & Liu, H. (2011). $\text{TiO}_2(\text{B})$ @carbon composite nanowires as anode for lithium ion batteries with enhanced reversible capacity and cyclic performance. *Journal of Materials Chemistry*, Vol.21, No.24, (May 2011), pp. 8591–8596, ISSN 0959-9428
- Yan, J.; Sumboja, A.; Khoo, E. & Lee, P. (2011). V_2O_5 loaded on SnO_2 nanowires for high-rate Li ion batteries. *Advanced Materials*, Vol.23, No.6, (February 2011), pp. 746–750, ISSN 0935-9648
- Yi, T.-F.; Zhu, Y.-R.; Zhu, X.-D.; Shu, J.; Yue, C.-B. & Zhou, A.-N. (2009). A review of recent developments in the surface modification of LiMn_2O_4 as cathode material of power lithium-ion battery. *Ionics*, Vol.15, No.6, (December 2009), pp. 779–784, ISSN 0947-7047
- Yi, T.; Shu, J.; Wang, Y.; Xue, J.; Meng, J.; Yue, C. & Zhu, R. (2011). Effect of treated temperature on structure and performance of LiCoO_2 coated by $\text{Li}_4\text{Ti}_5\text{O}_{12}$. *Surface & Coatings Technology*, Vol.205, No.13-14, (March 2011), pp. 3885–3889, ISSN 0257-8972
- Yu, W.-J.; Hou, P.-X.; Zhang, L.-L.; Li, F.; Liu, C. & Cheng, H.-M. (2010). Preparation and electrochemical property of Fe_2O_3 nanoparticles-filled carbon nanotubes. *Chemical Communications*, Vol.46, No.45, (October 2010), pp. 8576–8578, ISSN 1359-7345
- Zhang, H.-X.; Feng, C.; Zhai, Y.-C.; Jiang, K.-L.; Li, Q.-Q. & Fan, S.-S. (2009). Cross-stacked carbon nanotube sheets uniformly loaded with SnO_2 nanoparticles: A novel binder-free and high-capacity anode material for lithium-ion batteries. *Advanced Materials*, Vol.21, No.22, (January 2009), pp.2299–2304, ISSN 0935-9648
- Zhang, M.; Lei, D.; Yin, X.; Chen, L.; Li, Q.; Wang, Y. & Wang, T. (2010). Magnetite/graphene composites: microwave irradiation synthesis and enhanced cycling and rate performances for lithium ion batteries. *Journal of Materials Chemistry*, Vol.20, No.26, (June 2010), pp. 5538–5543, ISSN 0959-9428
- Zhang, S.; Du, Z.; Lin, R.; Jiang, T.; Liu, G.; Wu, X. & Weng, D. (2010). Nickel nanocone-array supported silicon anode for high-performance lithium-ion batteries. *Advanced Materials*, Vol.22, No.47, (December 2010), pp. 5378–5382, ISSN 0935-9648
- Zhang, W.-M.; Hu, J.-S.; Guo, Y.-G.; Zheng, S.-F.; & Zhong, L.-S. (2008). Tin-nanoparticles encapsulated in elastic hollow carbon spheres for high-performance anode material in lithium-ion batteries. *Advanced Materials*, Vol.20, No.6, (February 2008), pp. 1160–1165, ISSN 0935-9648
- Zhou, X.; Wang, F.; Zhu, Y. & Liu, Z. (2011). Graphene modified LiFePO_4 cathode materials for high power lithium ion batteries. *Journal of Materials Chemistry*, Vol.21, No.10, (January 2011), pp. 3353–3358, ISSN 0959-9428
- Zhou, Y.; Wang, J.; Hu, Y.; O'Hayre, R. & Shao, Z. (2010). A porous LiFePO_4 and carbon nanotube composite. *Chemical Communications*, Vol.46, No.38, (August 2010), pp. 7151–7153, ISSN 1359-7345
- Zhou, Z.-B.; Takeda, M.; Fujii, T. & Ue, M. (2005). $\text{Li}[\text{C}_2\text{F}_5\text{BF}_3]$ as an electrolyte salt for 4 V class lithium-ion cells. *Journal of the Electrochemical Society*, Vol.152, No.2, (January 2005), pp.A351–A356, ISSN 0013-4651

Zhu, X.-J.; Zhu, Y.-W.; Murali, S.; Stollers, M.-D. & Ruoff, R.-S. (2011). Nanostructured reduced graphene oxide/ Fe_2O_3 composite as a high-performance anode material for lithium ion batteries. *ACS Nano*, Vol.5, No.4, (April 2011), pp.3333–3338, ISSN 1936-0851

IntechOpen

IntechOpen



Lithium Ion Batteries - New Developments

Edited by Dr. Ilias Belharouak

ISBN 978-953-51-0077-5

Hard cover, 226 pages

Publisher InTech

Published online 24, February, 2012

Published in print edition February, 2012

The eight chapters in this book cover topics on advanced anode and cathode materials, materials design, materials screening, electrode architectures, diagnostics and materials characterization, and electrode/electrolyte interface characterization for lithium batteries. All these topics were carefully chosen to reflect the most recent advances in the science and technology of rechargeable Li-ion batteries, to provide wide readership with a platform of subjects that will help in the understanding of current technologies, and to shed light on areas of deficiency and to energize prospects for future advances.

How to reference

In order to correctly reference this scholarly work, feel free to copy and paste the following:

Xiangfeng Guan, Guangshe Li, Jing Zheng, Chuang Yu, Xiaomei Chen, Liping Li and Zhengwei Fu (2012). Heterogeneous Nanostructured Electrode Materials for Lithium-Ion Batteries – Recent Trends and Developments, Lithium Ion Batteries - New Developments, Dr. Ilias Belharouak (Ed.), ISBN: 978-953-51-0077-5, InTech, Available from: <http://www.intechopen.com/books/lithium-ion-batteries-new-developments/heterogeneous-nanostructured-electrode-materials-for-lithium-ion-batteries-recent-trends-and-develop>

INTECH
open science | open minds

InTech Europe

University Campus STeP Ri
Slavka Krautzeka 83/A
51000 Rijeka, Croatia
Phone: +385 (51) 770 447
Fax: +385 (51) 686 166
www.intechopen.com

InTech China

Unit 405, Office Block, Hotel Equatorial Shanghai
No.65, Yan An Road (West), Shanghai, 200040, China
中国上海市延安西路65号上海国际贵都大饭店办公楼405单元
Phone: +86-21-62489820
Fax: +86-21-62489821

© 2012 The Author(s). Licensee IntechOpen. This is an open access article distributed under the terms of the [Creative Commons Attribution 3.0 License](https://creativecommons.org/licenses/by/3.0/), which permits unrestricted use, distribution, and reproduction in any medium, provided the original work is properly cited.

IntechOpen

IntechOpen