

# We are IntechOpen, the world's leading publisher of Open Access books Built by scientists, for scientists

6,900

Open access books available

186,000

International authors and editors

200M

Downloads

Our authors are among the

154

Countries delivered to

TOP 1%

most cited scientists

12.2%

Contributors from top 500 universities



WEB OF SCIENCE™

Selection of our books indexed in the Book Citation Index  
in Web of Science™ Core Collection (BKCI)

Interested in publishing with us?  
Contact [book.department@intechopen.com](mailto:book.department@intechopen.com)

Numbers displayed above are based on latest data collected.  
For more information visit [www.intechopen.com](http://www.intechopen.com)



# Prophylactic Medical Treatment of Diabetic Retinopathy

Akihiro Kakehashi et al.\*

*Department of Ophthalmology, Jichi Medical University, Saitama Medical Center, Saitama Japan*

## 1. Introduction

Diabetic retinopathy (DR) is a leading cause of visual loss and blindness in adults in developed and developing countries (Friedman et al., 2011). Clinical trials have shown that intensive glycemic control reduces the incidence and progression of DR (Reichard et al., 1993; Stratton et al., 2001; DCCT, 2002 ). Other metabolic factors also affect the progression and development of DR. The UK Prospective Diabetes Study Group reported that tight blood pressure control is effective for reducing the incidence of DR (UK Prospective Diabetes Study Group, 1998a, 1998b). The EUCLID study group reported that inhibitors of angiotensin-converting enzyme drugs decreased the progression of retinopathy in patients without hypertension who had type 1 diabetes with little or no nephropathy (Chaturvedi et al., 1998). Lipid-lowering therapy with fenofibrate also might reduce the progression of DR (Chew et al., 2010; Keech et al., 2007). Among the metabolic factors, although glycemic control seems to be the most important, achieving acceptable glucose homeostasis is difficult, even when patients are highly compliant. Furthermore, DR continues to develop and progress even in patients who are treated intensively to achieve better glycemic control. Therefore, it is important to find medical options other than glycemic control to prevent diabetic ocular complications. The metabolic changes that accompany hyperglycemia, such as activation of the polyol pathway (Gabbay, 1973; Lorenzi, 2007; Robison et al., 1988; 1989), activation of protein kinase C (PKC) (Frank, 2002; Liang et al., 2005; Shiba et al., 1993), increased oxidative stress (Gurler et al., 2000; Jennings et al., 1991; Pan et al., 2008; Pinto et al., 2007), leukocyte adhesion to the endothelial cells (McLeod et al., 1995; Miyamoto et al., 1996; Schroder et al., 1991), and accumulation of advanced glycation end products (AGEs)

---

\* Ayumi Ota<sup>1</sup>, Fumihiko Toyoda<sup>1</sup>, Nozomi Kinoshita<sup>1</sup>, Hiroko Yamagami<sup>1</sup>, Hiroto Obata<sup>1</sup>, Takafumi Matsumoto<sup>2</sup>, Junichi Tsuji<sup>2</sup>, Yoh Dobashi,<sup>3</sup> Wilfred Y. Fujimoto<sup>3,4</sup>, Masanobu Kawakami<sup>3</sup> and Yasunori Kanazawa<sup>3</sup>

<sup>1</sup>Department of Ophthalmology, Jichi Medical University, Saitama Medical Center,

<sup>2</sup>Pharmacology Research Laboratories, Dainippon Sumitomo Pharma Co., Ltd.

<sup>3</sup>Department of Integrated Medicine I, Jichi Medical University, Saitama Medical Center,

<sup>4</sup>Division of Metabolism, Endocrinology and Nutrition, University of Washington School of Medicine, Seattle, WA,

<sup>1,2,3</sup>Japan

<sup>4</sup>USA

(Chibber et al., 1997; Hirata et al., 1997; Kakehashi et al., 2008), are related to the development and progression of diabetic ocular complications. In particular, the polyol pathway is correlated strongly with oxidative stress, activation of PKC, and accumulation of AGEs that lead to induction of vascular endothelial growth factor (VEGF). A key enzyme in the polyol pathway, aldose reductase (AR), is found in the retina and lens (Akagi et al., 1983; Kern & Engerman, 1981). AR inhibitors (ARIs) slowed thickening of the basement membrane of the retinal capillaries and progression of diabetic cataract in experimental studies (Hu et al., 1983; Robison et al., 1983). Thus, the polyol pathway might be the most attractive target for adjunctive treatment to prevent development of diabetic ocular complications. Based on favorable observations from experimental studies using ARIs (Obrosova et al., 2005; Okuda et al., 1985; Robinson et al., 1996; Sun et al., 2006; Yeh et al., 1986), a clinical trial of the ARI, sorbinil, was conducted in 1990, but this drug did not affect the development of DR, and enthusiasm for the clinical application of ARIs waned. To test drugs to treat DR, good animal models of DR would be useful. In this context, the spontaneously diabetic Torii (SDT) rat, a newly established non-obese type 2 diabetes model rat, seems especially appropriate, since it shows advanced DR resembling that in humans (Kakehashi et al., 2006; Kakehashi, 2011a, b; Shinohara et al., 2000). A recent study showed a strong preventative effect of ARIs on the development of DR in this animal model (Kakehashi et al., 2011).

In this chapter, we discuss several studies of medical treatment to prevent DR including our previous and ongoing studies using SDT rats. Among the various medical treatments, we have focused on the ARIs, because we believe that they are the most potent and safest of the potential treatments.

## 2. ARIs

Many experimental studies of ARIs (Obrosova et al., 2005; Okuda et al., 1985; Robinson et al., 1996; Sun et al., 2006; Yeh et al., 1986) have reported favorable results, with the exception of a clinical trial of sorbinil as mentioned previously.

However, our recent study on the effects of the ARI, fidarestat (SNK-860; Sanwa Kagaku Kenkyusho, Nagoya, Japan), in SDT rats showed that the drug strongly inhibited the development of DR (Kakehashi et al., 2011). We evaluated four rat groups: untreated, low- and high-dose (8 and 32 mg/kg/day) fidarestat-treated SDT rats, and nondiabetic control Sprague-Dawley (SD) rats. We evaluated the DR and measured the retinal sorbitol and reduced glutathione (GSH), VEGF in the ocular fluid, and urinary 8-hydroxy-2'-deoxyguanosine (8-OHdG). Compared with the untreated the incidence of DR was significantly lower in the low- and high-dose fidarestat groups group. Compared with the untreated group, the retinal sorbitol levels were lower in the control and low- and high-dose groups; the retinal GSH levels were higher in the control and the low- and high-dose groups; the VEGF levels were lower in the control and low- and high-dose groups; and the 8-OHdG levels were lower in the control and low- and high-dose groups. The results indicated that fidarestat prevents DR in SDT rats by suppressing oxidative stress and sorbitol production.

Based on these findings, we evaluated the recently developed ARI, ranirestat (AS-3201, Dainippon Sumitomo Pharmaceutical Co., Ltd., Osaka, Japan) for treating DR in SDT rats.

Male SDT rats and SD rats were obtained from CLEA, Inc., Tokyo, Japan. All SDT rats were confirmed to be diabetic based on a non-fasting blood glucose concentration exceeding 19.4 mmol/L. All rats were fed standard rat chow (CRF-1, Oriental Yeast, Inc., Tokyo, Japan) with or without ARI. Epalrestat (Kinedak, Ono Pharmaceutical Co., Ltd., Osaka, Japan), an ARI that is commercially available in Japan, was used as the positive control. The ranirestat-treated rats received the drug once daily; the epalrestat-treated rats were fed chow containing epalrestat at the onset of diabetes; and the SD rats and untreated SDT rats were fed chow without an ARI.

The animals were divided into six groups: normal SD rats (n=8), untreated SDT rats (n=9), ranirestat-treated SDT rats (0.1 mg/kg/day for 40 weeks, n=7; 1.0 mg/kg/day for 40 weeks, n=8; 10.0 mg/kg/day for 40 weeks, n=7), and epalrestat-treated SDT rats (100 mg/kg/day for 40 weeks) (n=8).

The body weight, blood glucose, and glycosylated hemoglobin (HbA1c) were measured once monthly. Blood samples were collected from the tail vein of the non-fasting rats to measure the plasma glucose and glycosylated hemoglobin levels. The body weight was greater in the SD than that in SDT rats with or without treatment ( $p < 0.01$ ). The mean plasma glucose levels and HbA1c levels in the SD rats were significantly ( $p < 0.01$ ) lower than in the SDT rats with or without treatment. However, there were no significant differences in the blood glucose levels and HbA1c levels between the treated and untreated SDT rats, indicating that an ARI did not affect the glycemic control. Therefore, we did not have to consider any effect of glycemia in interpreting results.

Fluorescein-dextran microscopy was performed after intracardiac injection of fluorescein-dextran (fluorescein isothiocyanate dextran, Sigma, St. Louis, MO, USA), using a modification of the method of D'Amato et al. (1993). With the animals under deep anesthesia induced by intraperitoneal injection of pentobarbital sodium (25 mg/kg body weight, Nembutal, Dainihonsei-yaku, Osaka, Japan), 1 ml of phosphate buffered saline containing 50 mg of fluorescein dextran was injected into the left ventricle of each animal. After 5 minutes, the eyes were enucleated for fluorescein microscopy. The retinas were peeled from the eyecups, and the entire retinas were flat-mounted on a slide glass without fixation. A drop of aqueous mounting medium (Crystal/Mount, Biomedica Corp., Foster City, CA, USA) was applied over the retinas and allowed to dry. The flat-mounted retinas were examined by fluorescence microscopy (Nikon SMZ1500 with P-FLA fluorescence attachment, Nikon, Tokyo, Japan). As we reported previously (Takehashi et al., 2006), DR was diagnosed when extensive fluorescein leakage was seen around the optic disc, and we classified the DR into three stages: no retinopathy (no dye leakage), mild retinopathy (mild dye leakage around the optic disc), and severe retinopathy (extensive dye leakage throughout the entire retina) (Fig. 1).

With the animals under deep anesthesia induced by intraperitoneal injection of pentobarbital sodium, the eyes were enucleated for conventional histopathologic studies and placed in a fixative (Superfix KY-500, Kurabo, Tokyo, Japan) to avoid iatrogenic retinal detachment. The fixed eyes were washed in 0.1% mol/L cacodylate buffer and embedded in paraffin. The paraffin block was cut into 4- $\mu$ m sections and stained with hematoxylin and eosin for conventional histopathologic examination. As reported previously (Takehashi et al., 2006), DR was diagnosed when large retinal folds mimicking tractional retinal detachment around the optic disc were observed.



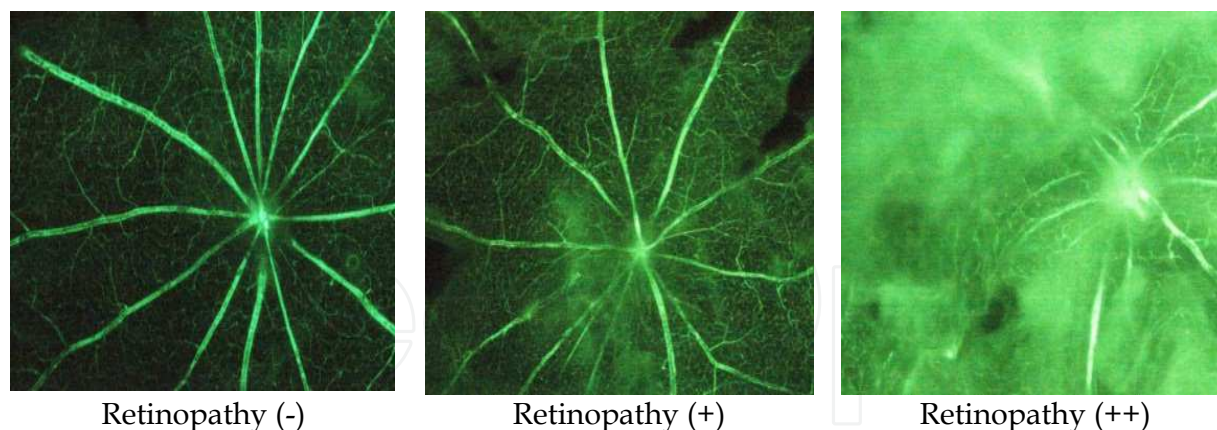


Fig. 1. Classification of diabetic retinopathy. Retinopathy (-), no dye leakage; retinopathy(+), mild dye leakage around the optic disc; retinopathy (++), extensive dye leakage throughout the retina.

Compared with controls (7/9 eyes), DR did not develop in any ranirestat-treated groups (0.1 mg/kg/day; 1.0 mg/kg/day; 10.0 mg/kg/day for 40 weeks) (0/7, 0/8, 0/7 eyes,  $p < 0.01$ , chi-square test). Mild DR developed in the epalrestat-treated group (100 mg/kg/day for 40 weeks) (2/8 eyes;  $p = 0.09$  by the chi-square test). Epalrestat did not prevent development of DR in SDT rats. The incidence of DR was significantly ( $p < 0.01$ ) lower in the ranirestat-treated groups compared with the untreated group.

Immunohistochemical procedures were based on the standard avidin-biotin horseradish peroxidase method using the appropriate antibody and developed with AEC Substrate Chromogen (DakoCytomation, Carpinteria, CA, USA). VEGF was immunostained with a monoclonal antibody for human VEGF (1:25 dilution, Immuno-Biological Laboratories Co., Ltd., Fujioka, Japan). Carboxymethyl-lysine (CML) was immunostained with a monoclonal antibody for human AGEs (1:50 dilution for CML, Trans Genic Inc., Kumamoto, Japan). Bovine serum was used as the primary antibody for the negative control. The immunostaining grades were divided into three groups: minimal (-), moderate (+), and severe (++). Minimal staining was characterized by almost no retinal staining, moderate staining by light red retinal staining, and severe staining by intense dark red retinal staining. Fig. 2 shows immunostaining for CML and VEGF. Immunostaining for CML was very strong in the untreated eye (upper left) compared with minimal staining in the ranirestat-treated (10 mg/kg/day for 40 weeks) eye (lower left). Immunostaining for VEGF was moderate in the untreated eye (upper right) compared with minimal staining in the ranirestat-treated eye (lower right).

Strong immunostaining for CML was seen in eight of nine eyes of the untreated SDT rats. The staining significantly ( $p < 0.05$ ) decreased to the moderate level in the eyes treated with 1.0 mg/kg/day and 10.0 mg/kg/day of ranirestat, except for those treated with 0.1 mg/kg/day of ranirestat ( $p = 0.111$ ). Epalrestat did not have a significant ( $p = 0.241$ ) effect. Moderate immunostaining for VEGF was seen in eight of nine eyes in the untreated SDT rats, and this decreased significantly ( $p < 0.05$ ) to minimal staining in the rats treated with 1.0 mg/kg/day and 10.0 mg/kg/day of ranirestat, but not in those treated with the 0.1 mg/kg/day dose of ranirestat ( $p = 0.117$ ). Epalrestat did not have a significant effect ( $p = 0.247$ ).

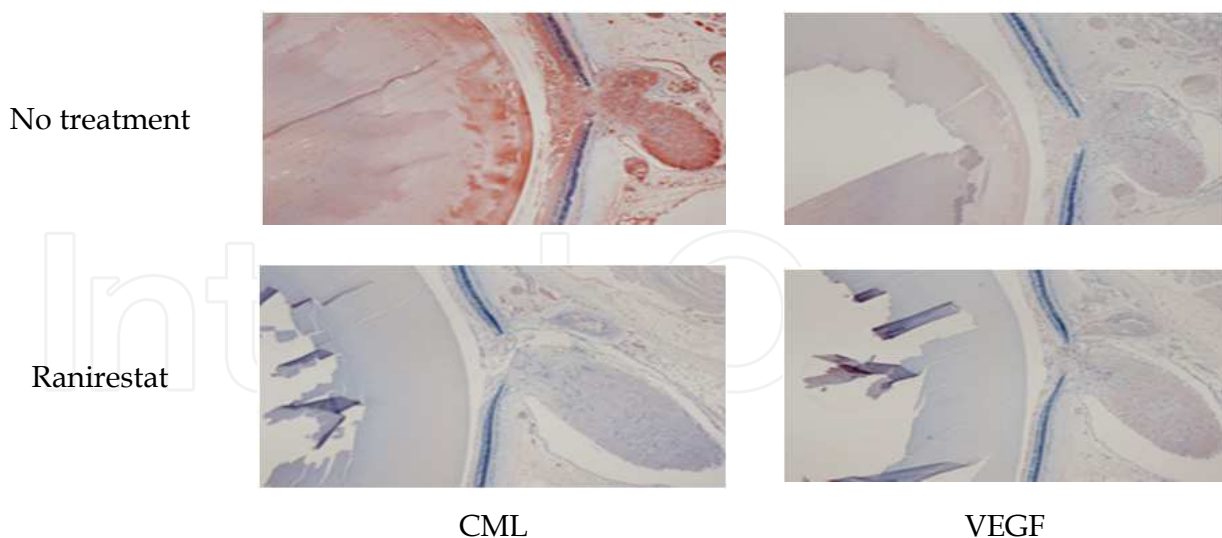


Fig. 2. Immunostaining for CML and VEGF. Immunostaining for CML shows strong staining in the untreated eye (upper left) compared with minimal staining in the ranirestat-treated eye (lower left). Immunostaining for VEGF shows moderate staining in the untreated eye (upper right) compared with minimal staining in the ranirestat-treated eye (lower right).

The retinal sorbitol and fructose levels were measured. ARI activity was determined after the liquid chromatography-tandem mass spectrometry method was performed. Briefly, rats were anesthetized with sodium pentobarbital (50 mg/kg, intra peritoneally; Abbott, Abbott Park, IL, USA), and the retinas were removed, promptly cooled with liquid nitrogen, and stored at  $-50^{\circ}\text{C}$ . The samples for the sorbitol and fructose assay were prepared by protein precipitation followed by a solid-phase extraction procedure. The API 4000 Mass Spectrometer (AB SCIEX, Tokyo, Japan) was operated in the selected-reaction monitoring mode under optimized conditions to detect sorbitol- or fructose-negative ions formed by atmospheric pressure chemical ionization. At 15 weeks, the sorbitol levels in the retina of the SDT rats treated with ranirestat (10.0 mg/kg/day) were lower than in the untreated eyes. Eparlestat did not affect the retinal sorbitol levels. However, there were no significant differences in the sorbitol levels among the treated and untreated SDT rats at 40 weeks. Retinal fructose levels were lower at 15 weeks in SDT rats treated with ranirestat (10.0 mg/kg/day) than those that were untreated. Eparlestat did not affect the retinal fructose levels. At 40 weeks, there were no significant differences in the retinal fructose levels among the rat groups.

### 3. Other options for prophylactic medical treatment of DR

#### 3.1 PKC $\beta$ inhibitor

Liang and coworkers (2005) reported amelioration of vascular dysfunction in diabetic rats using an oral PKC  $\beta$  inhibitor. Those authors later reported that VEGF increases intraocular vascular permeability through activation of PKC in vivo and suggested that oral pharmacologic therapies involving PKC  $\beta$ -isoform-selective inhibitors might be effective for treating DR (Aiello et al., 1997). Based on their report, the oral PKC  $\beta$  inhibitor,

ruboxistaurin (RBX) (LY333531, Eli Lilly and Co., Indianapolis, IN), administered to patients with diabetes with no or mild DR, ameliorated diabetes-induced retinal circulation time abnormalities (Aiello et al., 2006). Another multicenter, double-masked, randomized, placebo-controlled study in patients with diabetes with moderate to very severe nonproliferative diabetic retinopathy showed that RBX was well tolerated and reduced the risk of visual loss but did not prevent DR progression (PKC-DRS Study Group, 2005).

We evaluated the effect of our PKC  $\beta$  inhibitor (JTT-010, Takatsuki, Japan) on the development of diabetic ocular complications in SDT rats. The rats had delayed oscillatory potentials on electroretinography, but DR developed eventually. We concluded that PKC  $\beta$  inhibitors may require concurrent administration of antihyperglycemic drugs to achieve maximal therapeutic effects on DR (Sasase et al., 2009).

### 3.2 Anti-AGE agents

Previous studies have suggested the concept of “metabolic memory” associated with accumulation of AGEs as DR develops (Chibber et al., 1997; Genuth et al., 2005; Hammes et al., 1999). Another anti-AGE agent, pyridoxamine, also prevented development of DR (Stitt et al., 2002). However, clinical trials of anti-AGE agents for the treatment of DR have not yet been conducted.

Based on those reports, we evaluated the effects of oral aminoguanidine and pyridoxamine on the development of cataract and DR in SDT rats (Toyoda et al., 2011) and reported that aminoguanidine prevented accumulation of CML and resulted in almost complete inhibition of DR, but pyridoxamine did not prevent DR. Aminoguanidine seems to be a stronger inhibitor of DR than pyridoxamine.

### 3.3 Anti-leukocyte adhesion agents

Leukocyte adhesion to the diabetic retinal vasculature is thought to be the critical early event in the pathogenesis of DR, resulting in breakdown of the blood-retinal barrier and in capillary nonperfusion (Gurler et al., 2000; Hu et al., 1983). Adamis and coworkers (1994) reported that the antileukocyte adhesion agents, anti-intercellular adhesion molecule-1 antibody (Miyamoto et al., 1999) and anti-CD 18 antibody (Barouch et al., 2000), were useful for treating experimental DR. They also showed an antileukocyte adhesion effect using a PKC  $\beta$  inhibitor (Nonaka et al., 2000) and receptor for the AGEs (Kaji et al., 2007). Nagai et al. (2007) reported an inhibitory effect of an angiotensin II type 1 receptor blocker on retinal leukostasis in diabetic mice.

We tested several commercially available antileukocyte adhesion agents in diabetic rats. We first evaluated the effectiveness of the sulphonylurea gliclazide for decreasing the adhesion of neutrophils to endothelial cells and leukocyte entrapment in the retinal microcirculation of streptozotocin (STZ)-induced diabetic rats. We showed that gliclazide attenuated retinal leukostasis irrespective of hyperglycemia in diabetic rats, whereas another sulphonylurea, glibenclamide, did not. This indicated that gliclazide, among the sulphonylurea drugs, might be selectively beneficial for preventing development of DR (Kinoshita et al., 2002). We also evaluated the effectiveness of topical nipradilol, a topical antiglaucoma  $\alpha\beta$ -blocker and

nitric oxide donor, on retinal microvascular leukocyte adhesion in diabetic rats. Topical nipradilol significantly reduced retinal leukostasis in the retinal microcirculation of STZ-induced diabetic rats, and we think that nipradilol may be a prophylactic agent that can inhibit development of early DR through its nitric oxide donor effects on the microcirculation. We believe that most antileukocyte adhesion agents can slow progression of DR but do not inhibit it completely. Good glycemic control or other additional medical treatments are needed to achieve a maximal effect on DR.

### 3.4 Anti-VEGF agents

Since the VEGF levels increase as DR progresses (Adamis et al., 1994; Aiello et al., 1994; Amin et al., 1997; Lutty et al., 1996), VEGF is very important in the development and progression of DR. VEGF is also a vascular permeability factor and plays an important role in the development of diabetic macular edema (DME) (Mathews et al., 1997). Based on these observations, several anti-VEGF agents such as an anti-VEGF antibody (Adamis et al., 1996), soluble VEGF-receptor chimeric proteins (Aiello et al., 1995), and antisense phosphorothioate oligodeoxynucleotides against VEGF (Robinson et al., 1996) have been tested in an animal model of retinal neovascularization mimicking DR. The results were very promising. Based on these favorable results in animal studies, several clinical studies have been undertaken to evaluate treatment of DME using an anti-VEGF antibody. The RESOLVE Study evaluated the safety and efficacy of intravitreal ranibizumab (Lucentis, Genentech, Inc., South San Francisco, CA) for treating patients with DME (Massin et al., 2010). Ranibizumab is a fully humanized monoclonal antibody fragment, which binds to multiple variants of VEGF-A, and is approved to treat age-related macular degeneration. The results indicated that intravitreal ranibizumab improves visual acuity and reduces macular thickness in DME. The Diabetic Retinopathy Clinical Research Network (DRCR.net) is evaluating and comparing several medical treatments for DME. The DRCR.net is a collaborative network formed in September 2002 that is dedicated to facilitating multicenter clinical studies of DR, DME, and associated conditions. Currently, there are more than 109 participating sites with over 320 physicians throughout the United States (<http://drcrnet.jaeb.org/>). The DRCR.net reported that intravitreal ranibizumab combined with laser treatment is more effective than laser treatment with or without triamcinolone. The anti-VEGF agents inhibit VEGF and increase capillary permeability. Macular edema is resolved by blocking increased capillary permeability. However, a drawback of the anti-VEGF agents is that they do not have long-term efficacy, so repeated injections are usually required. Moreover, a 2% prevalence of endophthalmitis over 12 months in the RESOLVE Study is worrisome. To minimize the number of intravitreal injections, gene therapy using a safe virus vector, such as an adeno-associated virus (Ideno et al., 2007), may be a future option for treating DME.

## 4. Comments

Good glycemic control is the most important factor for preventing the development and progression of diabetic ocular complications. However, it is also difficult to obtain good glycemic control in many clinical cases. In this chapter, we discussed several additional medical therapeutic options for diabetic ocular complications. PKC  $\beta$  inhibitors and



antileukocyte adhesion agents might help prevent DR, but neither was sufficient without good concurrent glycemic control or other additional medical treatments. Anti-VEGF agents have a strong therapeutic effect in DME; however, they do not have long-term efficacy and the possibility of complications, such as endophthalmitis, associated with injection of anti-VEGF agents into the vitreous is a concern. Thus, anti-VEGF agents do not seem to be safe therapeutic options for preventing diabetic ocular complications. Oral anti-AGE agents seem to be good prophylactic medical treatments for DR in experimental animal studies. Clinical trials of oral anti-AGE agents for treating DR are worthwhile. Among the several prophylactic medical treatments for DR, we focused on the ARIs in this chapter. Epalrestat, which is commercially available in Japan, has been widely used to treat diabetic neuropathy. Although the effect of eparlestat on DR has not been clearly recognized in a clinical trial, the safety and clinical effects of long-term oral administration of the drug for treating diabetic neuropathy have been established. Thus, we believe that our findings suggest the potential therapeutic usefulness of a new ARI, ranirestat, for preventing DR. Importantly, it appears that ranirestat might prevent DR even without strict glycemic control. We look forward to the development and evaluation of new ARIs with minimal side effects for use in future clinical studies to prevent DR.

## 5. References

- Adamis, A. P., Miller, J.W., Bernal, M.T., D'Amico, D.J., Folkman J., Yeo T.K. & K. Yeo T. (1994) Increased vascular endothelial growth factor levels in the vitreous of eyes with proliferative diabetic retinopathy. *Am J Ophthalmol*, Vol. 118, No. 4 (October 1994), pp. 445-450, ISSN 0002-9394
- Adamis, A. P., Shima, D.T., Tolentino, M.J., Gragoudas, E.S., Ferrara, N., Folkman J., D'Amore, P.A. & Miller J.W. (1996) Inhibition of vascular endothelial growth factor prevents retinal ischemia-associated iris neovascularization in a nonhuman primate. *Arch Ophthalmol*, Vol. 114, No. 1 (January 1996), pp. 66-71, ISSN 0003-9950
- Aiello, L. P., Avery R.L., Arrigg, P.G., Keyt, B.A., Jampel, H.D., Shah, S. T., Pasquale, L.R., Thieme, H., Iwamoto, M.A., Park, J.E. et al. (1994) Vascular endothelial growth factor in ocular fluid of patients with diabetic retinopathy and other retinal disorders. *N Engl J Med*, Vol. 331, No. 22 (December 1994), pp. 1480-1487, ISSN 0028-4793
- Aiello, L. P., Pierce, E.A., Foley E.D., Takagi H., Chen H., Riddle L., Ferrara N., King, G.L. & Smith L.E. (1995) Suppression of retinal neovascularization in vivo by inhibition of vascular endothelial growth factor (VEGF) using soluble VEGF-receptor chimeric proteins. *Proc Natl Acad Sci U S A*, Vol. 92, No. 23 (November 1995), pp. 10457-10461, ISSN 0027-8424
- Aiello, L. P., Bursell, S. E., Clermont, A., Duh, E., Ishii, H., Takagi, C., Mori, F., Ciulla, T. A., Ways, K., Jirousek, M., Smith, L. E., King, G. L. (1997) Vascular endothelial growth factor-induced retinal permeability is mediated by protein kinase C in vivo and suppressed by an orally effective beta-isoform-selective inhibitor. *Diabetes*, Vol. 46, No. 9 (September 1997), pp.1473-80, ISSN 0012-1797
- Aiello, L. P., Clermont A., Arora V., Davis, M.D., Sheetz, M.J. & Bursell, S.E. (2006) Inhibition of PKC beta by oral administration of ruboxistaurin is well tolerated and ameliorates

- diabetes-induced retinal hemodynamic abnormalities in patients. *Invest Ophthalmol Vis Sci*, Vol. 47, No. 1 (January 2006), pp. 86-92, ISSN 0146-0404
- Akagi, Y., Kador, P.F., Kuwabara, T. & Kinoshita, J.H. (1983) Aldose reductase localization in human retinal mural cells. *Invest Ophthalmol Vis Sci*, Vol. 24, No. 11 (November 1983), pp. 1516-1519, ISSN 0146-0404
- Amin, R. H., Frank, R. N., Kennedy, A., Elliott, D., Puklin, J. E., Abrams, G. W. (1997) Vascular endothelial growth factor is present in glial cells of the retina and optic nerve of human subjects with nonproliferative diabetic retinopathy. *Invest Ophthalmol Vis Sci*, Vol. 38, No. 1 (January 1997), pp. 36-47, ISSN 0146-0404
- Barouch, F. C., Miyamoto, K., Allport J.R., Fujita K., Bursell, S.E., Aiello L.P., Luscinskas, F.W. & Adamis, A.P. (2000) Integrin-mediated neutrophil adhesion and retinal leukostasis in diabetes. *Invest Ophthalmol Vis Sci*, Vol. 41, No. 5 (April 2000), pp. 1153-1158, ISSN 0146-0404
- Chaturvedi, N., Sjolie, A.K., Stephenson, J.M., Abrahamian, H., Keipes M., Castellarin, A., Rogulja-Peeponik, Z. & Fuller, J.H. (1998) Effect of lisinopril on progression of retinopathy in normotensive people with type 1 diabetes. The EUCLID Study Group. EURODIAB Controlled Trial of Lisinopril in Insulin-Dependent Diabetes Mellitus. *Lancet*, Vol. 351, No. 9095 (January 1998), pp. 28-31, ISSN 0140-6736
- Chew, E. Y., Ambrosius, W.T., Davis, M.D., Danis, R.P., Gangaputra, S., Greven, C.M., Hubbard, L., Esser, B.A., Lovato, J.F., Perdue, L.H., Goff, D.C., Jr., Cushman, W.C., Ginsberg, H.N., Elam, M.B., Genuth, S., Gerstein, H.C., Schubart, U. & Fine, L.J. (2010) Effects of medical therapies on retinopathy progression in type 2 diabetes. *N Engl J Med*, Vol. 363, No. 3 (July 2010), pp. 233-244, ISSN 1533-4406
- Chibber, R., Molinatti, P.A., Rosatto, N., Lambourne, B. & Kohner, E.M. (1997) Toxic action of advanced glycation end products on cultured retinal capillary pericytes and endothelial cells: relevance to diabetic retinopathy. *Diabetologia*, Vol. 40, No. 2 (February 1997), pp. 156-164, ISSN 0012-186X
- D'Amato, R., Wesolowski, E., Smith, L. E. (1993) Microscopic visualization of the retina by angiography with high-molecular-weight fluorescein-labeled dextrans in the mouse. *Microvasc Res*, Vol. 46, No. 2 (September 1993), pp. 135-42, ISSN 0026-2862
- DCCT (2002) Effect of intensive diabetes treatment on the microvascular complications of type 1 diabetes mellites. The Diabetes Control and Complications Trial. *JAMA*, vol 287, No. 19, (May 2002), pp. 2563-9, ISSN 0098-7484
- Frank, R. N. (2002) Potential new medical therapies for diabetic retinopathy: protein kinase C inhibitors. *Am J Ophthalmol*, Vol. 133, No. 5 (May 2002), pp. 693-698, ISSN 0002-9394
- Friedman, D. S., Ali, F. & Kourgialis, N. (2011) Diabetic retinopathy in the developing world: how to approach identifying and treating underserved populations. *Am J Ophthalmol*, Vol. 151, No. 2 (February 2011), pp. 192-194 e191, ISSN 1879-1891
- Gabbay, K. H. (1973) The sorbitol pathway and the complications of diabetes. *N Engl J Med*, Vol. 288, No. 16 (April 1973), pp. 831-836, ISSN 0028-4793
- Genuth, S., Sun, W., Cleary, P., Sell, D.R., Dahms, W., Malone, J., Sivitz, W. & Monnier, V.M. (2005) Glycation and carboxymethyl lysine levels in skin collagen predict the risk of future 10-year progression of diabetic retinopathy and nephropathy in the Diabetes Control and Complications trial and epidemiology of diabetes interventions and

- complications participants with type 1 diabetes. *Diabetes*, Vol. 54, No. 11 (November 2005), pp. 3103-3111, ISSN 0012-1797
- Gurler, B., Vural, H., Yilmaz, N., Oguz, H., Satıcı, A. & Aksoy, N. (2000) The role of oxidative stress in diabetic retinopathy. *Eye*, Vol. 14, Pt 5 (October 2000), pp. 730-735, ISSN 0950-222X
- Hammes, H. P., Alt, A., Niwa, T., Clausen, J.T., Bretzel, R.G., Brownlee, M. & Schleicher, E.D. (1999) Differential accumulation of advanced glycation end products in the course of diabetic retinopathy. *Diabetologia*, Vol. 42, No. 6 (June 1999), pp. 728-736, ISSN 0012-186X
- Hirata, C., Nakano, K., Nakamura, N., Kitagawa, Y., Shigeta, H., Hasegawa, G., Ogata, M., Ikeda, T., Sawa, H., Nakamura, K., Ienaga, K., Obayashi, H. & Kondo, M. (1997) Advanced glycation end products induce expression of vascular endothelial growth factor by retinal Muller cells. *Biochemical and Biophysical Research Communications*, Vol. 236, No. 3 (July 1997), pp. 712-715, ISSN 0006-291X
- Hu, T. S., Datiles, M. & Kinoshita, J.H. (1983) Reversal of galactose cataract with sorbinil in rats. *Invest Ophthalmol Vis Sci*, Vol. 24, No. 5 (May 1983), pp. 640-644, ISSN 0146-0404
- Ideno, J., Mizukami, H., Kakehashi, A., Saito, Y., Okada, T., Urabe, M., Kume, A., Kuroki, M., Kawakami, M., Ishibashi, S. & Ozawa, K. (2007) Prevention of diabetic retinopathy by intraocular soluble flt-1 gene transfer in a spontaneously diabetic rat model. *Int J Mol Med*, Vol. 19, No. 1 (January 2007), pp. 75-79, ISSN 1107-3756
- Jennings, P. E., McLaren, M., Scott, N.A., Saniabadi, A.R. & Belch, J.J. (1991) The relationship of oxidative stress to thrombotic tendency in type 1 diabetic patients with retinopathy. *Diabetic Medicine: a Journal of the British Diabetic Association*, Vol. 8, No. 9 (November 1991), pp. 860-865, ISSN 0742-3071
- Kaji, Y., Usui, T., Ishida, S., Yamashiro, K., Moore, T. C., Moore, J., Yamamoto, Y., Yamamoto, H., Adamis, A. P. (2007) Inhibition of diabetic leukostasis and blood-retinal barrier breakdown with a soluble form of a receptor for advanced glycation end products. *Invest Ophthalmol Vis Sci*, Vol. 48, No. 2 (February 2007), pp. 858-65, ISSN 0146-0404
- Kakehashi, A., Saito, Y., Mori, K., Sugi, N., Ono, R., Yamagami, H., Shinohara, M. Tamemoto, H., Ishikawa, S.E., Kawakami, M. & Kanazawa, Y. (2006) Characteristics of diabetic retinopathy in SDT rats. *Diabetes Metab Res Rev*, Vol. 22, No. 6 (November-December 2006), pp. 455-461, ISSN 1520-7552
- Kakehashi, A., Inoda, S., Mameuda, C., Kuroki, M., Jono, T., Nagai, R., Horiuchi, S., Kawakami, M. & Kanazawa, Y. (2008) Relationship among VEGF, VEGF receptor, AGEs, and macrophages in proliferative diabetic retinopathy. *Diabetes Res Clin Pract*, Vol. 79, No. 3 (March 2008), pp. 438-445, ISSN 1872-8227
- Kakehashi, A. (2011a) Diabetic ocular complications in the SDT Rat. *The Open Diabetes Journal*, Vol. 4, No. Special issue 2011 (April 2011), pp. 37-40, 1876-5246.
- Kakehashi, A. (2011b) Nobel animal model of diabetic complications: SDT rat. *The Open Diabetes Journal*, Vol. 4, No. Special issue 2011(April 2011), p. 14
- Kakehashi, A., Takezawa, M., Toyoda, F., Kinoshita, N., Kambara, C., Yamagami, H., Kato, N., Ishikawa, S., Kawakami, M. & Kanazawa, Y. (2011) Aldose reductase inhibitor fidarestat prevents diabetic ocular complications in spontaneously

- diabetic Torii rats. *The Open Diabetes Journal*, Vol. 4, Special issue 2011 (April 2011), pp. 101-107
- Keech, A. C., Mitchell, P., Summanen, P.A., O'Day, J., Davis, T.M., Moffitt, M.S., Taskinen, M.R., Simes, R.J., Tse, D., Williamson, E., Merrifield, A., Laatikainen, L.T., d'Emden, M.C., Crimet, D.C., O'Connell, R.L. & Colman, P.G. (2007) Effect of fenofibrate on the need for laser treatment for diabetic retinopathy (FIELD study): a randomised controlled trial. *Lancet*, Vol. 370, No. 9600 (November 2007), pp. 1687-1697, ISSN 1474-547X
- Kern, T. S. & Engerman, R.L. (1981) Distribution of aldose reductase in ocular tissues. *Exp Eye Res*, Vol. 33, No. 2 (August 1981), pp. 175-182, ISSN 0014-4835
- Kinoshita, N., Kakehashi, A., Inoda, S., Itou, Y., Kuroki, M., Yasu, T., Kawakami, M. & Kanazawa, Y. (2002) Effective and selective prevention of retinal leukostasis in streptozotocin-induced diabetic rats using gliclazide. *Diabetologia*, Vol. 45, No. 5 (May 2002), pp. 735-739, ISSN 0012-186X
- Liang, H. R., Takagaki, T., Foltz, R.L. & Bennett, P. (2005) Quantitative determination of endogenous sorbitol and fructose in human erythrocytes by atmospheric-pressure chemical ionization LC tandem mass spectrometry. *J Chromatogr B Analyt Technol Biomed Life Sci*, Vol. 824, No. 1-2 (September 2005), pp. 36-44, ISSN 1570-0232
- Lorenzi, M. (2007) The polyol pathway as a mechanism for diabetic retinopathy: attractive, elusive, and resilient. *Exp Diabetes Res*, Vol. 2007, pp. 61038, ISSN 1687-5303
- Lutty, G. A., McLeod, D.S., Merges, C., Diggs, A. & Plouet, J. (1996) Localization of vascular endothelial growth factor in human retina and choroid. *Arch Ophthalmol*, Vol. 114, No. 8 (August 1996), pp. 971-977, ISSN 0003-9950
- Massin, P., Bandello, F., Garweg, J.G., Hansen, L.L., Harding, S.P., Larsen, M., Mitchell, P., Sharp, D., Wolf-Schnurrbusch, U.E., Gekkieva, M., Weichselberger, A. & Wolf, S. (2010) Safety and efficacy of ranibizumab in diabetic macular edema (RESOLVE Study): a 12-month, randomized, controlled, double-masked, multicenter phase II study. *Diabetes Care*, Vol. 33, No. 11 (November 2010), pp. 2399-2405, ISSN 1935-5548
- Mathews, M. K., Merges, C., McLeod, D.S. & Lutty, G.A. (1997) Vascular endothelial growth factor and vascular permeability changes in human diabetic retinopathy. *Invest Ophthalmol Vis Sci*, Vol. 38, No. 13 (December 1997), pp. 2729-2741, ISSN 0146-0404
- McLeod, D. S., Lefer, D.J., Merges, C. & Lutty, G.A. (1995) Enhanced expression of intracellular adhesion molecule-1 and P-selectin in the diabetic human retina and choroid. *Am J Pathol*, Vol. 147, No. 3 (September 1995), pp. 642-653, ISSN 0002-9440
- Miyamoto, K., Ogura, Y., Hamada, M., Nishiwaki, H., Hiroshiba, N. & Honda, Y. (1996) In vivo quantification of leukocyte behavior in the retina during endotoxin-induced uveitis. *Invest Ophthalmol Vis Sci*, Vol. 37, No. 13 (December 1996), pp. 2708-2715, ISSN 0146-0404
- Miyamoto, K., Khosrof, S., Bursell, S.E., Rohan, R., Murata, T., Clermont, A.C., Aiello, L.P., Ogura, Y. & Adamis, A.P. (1999) Prevention of leukostasis and vascular leakage in streptozotocin-induced diabetic retinopathy via intercellular adhesion molecule-1



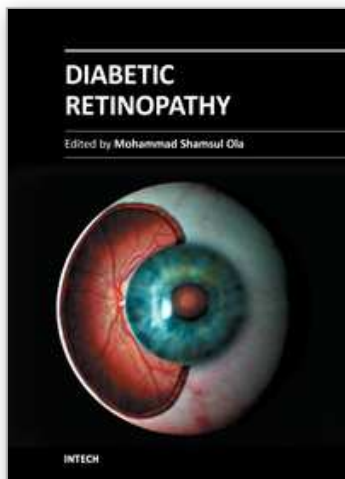
- inhibition. *Proc Natl Acad Sci U S A*, Vol. 96, No. 19 (September 1999), pp. 10836-10841, ISSN 0027-8424
- Nagai, N., Izumi-Nagai, K., Oike, Y., Koto, T., Satofuka, S., Ozawa, Y., Yamashiro, K., Inoue, M., Tsubota, K., Umezawa, K. & Shida, S. (2007) Suppression of diabetes-induced retinal inflammation by blocking the angiotensin II type 1 receptor or its downstream nuclear factor-kappaB pathway. *Invest Ophthalmol Vis Sci*, Vol. 48, No. 9 (September 2007), pp. 4342-4350, ISSN 0146-0404
- Nonaka, A., Kiryu, J., Tsujikawa, A., Yamashiro, K., Miyamoto, K., Nishiwaki, H., Honda, Y. & Ogura, Y. (2000) PKC-beta inhibitor (LY333531) attenuates leukocyte entrapment in retinal microcirculation of diabetic rats. *Invest Ophthalmol Vis Sci*, Vol. 41, No. 9 (August 2000), pp. 2702-2706, ISSN 0146-0404
- Obrosova, I. G., Pacher, P., Szabo, C., Zsengeller, Z., Hirooka, H., Stevens, M.J. & Yorek, M.A. (2005) Aldose reductase inhibition counteracts oxidative-nitrosative stress and poly(ADP-ribose) polymerase activation in tissue sites for diabetes complications. *Diabetes*, Vol. 54, No. 1 (January 2005), pp. 234-242, ISSN 0012-1797
- Okuda, J., Yashima, K., Inagaki, K. & Miwa, I. (1985) Effects of an aldose reductase inhibitor, 1-[(p-bromophenyl)-sulfonyl]hydantoin, on cataract formation and tissue polyol levels in galactosemic rats. *Chem Pharm Bull*, Vol. 33, No. 7 (July 1985), pp. 2990-2995, ISSN 0009-2363 .
- Pan, H. Z., Zhang, H., Chang, D., Li, H. & Sui, H. (2008) The change of oxidative stress products in diabetes mellitus and diabetic retinopathy. *Br J Ophthalmol*, Vol. 92, No. 4 (April 2008), pp. 548-551, ISSN 1468-2079
- Pinto, C. C., Silva, K.C., Biswas, S.K., Martins, N., De Faria, J.B. & De Faria, J.M. (2007) Arterial hypertension exacerbates oxidative stress in early diabetic retinopathy. *Free Radic Res*, Vol. 41, No. 10 (October 2007), pp. 1151-1158, ISSN 1071-5762
- PKC-DRS Study Group (2005) The effect of ruboxistaurin on visual loss in patients with moderately severe to very severe nonproliferative diabetic retinopathy: initial results of the Protein Kinase C beta Inhibitor Diabetic Retinopathy Study (PKC-DRS) multicenter randomized clinical trial. *Diabetes*, Vol. 54, No. 7 (July 2005), pp. 2188-97, ISSN 0012-1797
- Reichard, P., Nilsson, B.Y. & Rosenqvist, U. (1993) The effect of long-term intensified insulin treatment on the development of microvascular complications of diabetes mellitus. *N Engl J Med*, Vol. 329, No. 5 (July 29, 1993), pp. 304-309, ISSN 0028-4793
- Robinson, G. S., Pierce, E. A., Rook, S. L., Foley, E., Webb, R., Smith, L. E. (1996) Oligodeoxynucleotides inhibit retinal neovascularization in a murine model of proliferative retinopathy. *Proc Natl Acad Sci U S A*, Vol. 93, No. 10 (May 1996), pp. 4851-6, ISSN 0027-8424
- Robison, W. G., Jr., Kador, P.F. & Kinoshita, J.H. (1983) Retinal capillaries: basement membrane thickening by galactosemia prevented with aldose reductase inhibitor. *Science*, Vol. 221, No. 4616 (September 1983), pp. 1177-1179, ISSN 0036-8075
- Robison, W. G., Jr., Nagata, M. & Kinoshita, J.H. (1988) Aldose reductase and retinal capillary basement membrane thickening. *Exp Eye Res*, Vol. 46, No. 3 (March 1988), pp. 343-348, ISSN 0014-4835
- Robison, W. G., Jr., Nagata, M., Tillis, T.N., Laver, N. & Kinoshita, J.H. (1989) Aldose reductase and pericyte-endothelial cell contacts in retina and optic nerve. *Invest*

- Ophthalmol Vis Sci*, Vol. 30, No. 11 (November 1989), pp. 2293-2299, ISSN 0146-0404
- Robinson, W. G., Jr., Laver, N.M., Jacot, J.L., Glover, J.P., Basso, M.D., Blouin, P. & Hohman, T.C. (1996) Diabetic-like retinopathy ameliorated with the aldose reductase inhibitor WAY-121,509. *Invest Ophthalmol Vis Sci*, Vol. 37, No. 6 (May 1996), pp. 1149-1156, ISSN 0146-0404
- Sasase, T., Morinaga, H., Abe, T., Miyajima, K., Ohta, T., Shinohara, M., Matsushita, M., Kakehashi, A. (2009) Protein kinase C beta inhibitor prevents diabetic peripheral neuropathy, but not histopathological abnormalities of retina in Spontaneously Diabetic Torii rat. *Diabetes, Obesity & Metabolism*, Vol. 11, No. 11 (November 2009), pp.1084-7. ISSN 1462-8902
- Schroder, S., Palinski, W. & Schmid-Schonbein, G.W. (1991) Activated monocytes and granulocytes, capillary nonperfusion, and neovascularization in diabetic retinopathy. *Am J Pathol*, Vol. 139, No. 1 (July 1991), pp. 81-100, ISSN 0002-9440
- Shiba, T., Inoguchi, T., Sportsman, J.R., Heath, W.F., Bursell, S. & King, G.L. (1993) Correlation of diacylglycerol level and protein kinase C activity in rat retina to retinal circulation. *Am J Physiol*, Vol. 265, No. 5, Pt 1 (November 1993), pp. E783-793, ISSN 0002-9513
- Shinohara, M., Masuyama, T., Shoda, T., Takahashi, T., Katsuda, Y., Komeda, K., Kuroki, M., Kakehashi, A. & Kanazawa, Y. (2000) A new spontaneously diabetic non-obese Torii rat strain with severe ocular complications. *Int J Exp Diabetes Res*, Vol. 1, No. 2, pp. 89-100, ISSN 1560-4284
- Stitt, A., Gardiner, T.A., Alderson, N.L., Canning, P., Frizzell, N., Duffy, N., Boyle, C., Januszewski, A.S., Chachich, M., Baynes, J.W. & Thorpe, S.R. (2002) The AGE inhibitor pyridoxamine inhibits development of retinopathy in experimental diabetes. *Diabetes*, Vol. 51, No. 9 (September 2002), pp. 2826-2832, ISSN 0012-1797
- Stratton, I. M., Kohner, E.M., Aldington, S.J., Turner, R.C., Holman, R.R., Manley, S.E. & Matthews, D.R. (2001) UKPDS 50: risk factors for incidence and progression of retinopathy in Type II diabetes over 6 years from diagnosis. *Diabetologia*, Vol. 44, No. 2 (February 2001), pp. 156-163, ISSN 0012-186X
- Sun, W., Oates, P.J., Coutcher, J.B., Gerhardinger, C. & Lorenzi, M. (2006) A selective aldose reductase inhibitor of a new structural class prevents or reverses early retinal abnormalities in experimental diabetic retinopathy. *Diabetes*, Vol. 55, No. 10 (October 2006), pp. 2757-2762, ISSN 0012-1797
- Toyoda, F., Kakehashi, A., Ota, A., Kinoshita, N., Kambara, C., Yamagami, H., Tamemoto, H., Ueba, H., Dobashi, Y., Ishikawa, S., Kawakami, M. & Kanazawa, Y. (2011) Prevention of proliferative diabetic retinopathy and cataract in SDT rats with aminoguanidine, an anti-advanced glycation end product agent. *The Open Diabetes Journal*, Vol. 4, No. Special issue (April 2011), pp. 108-113
- UK Prospective Diabetes Study Group. (1998a) Efficacy of atenolol and captopril in reducing risk of macrovascular and microvascular complications in type 2 diabetes: UKPDS 39. *BMJ*, Vol. 317, No. 7160 (September 1998), pp. 713-720, ISSN 0959-8138

- UK Prospective Diabetes Study Group. (1998b) Tight blood pressure control and risk of macrovascular and microvascular complications in type 2 diabetes: UKPDS 38. *BMJ*, Vol. 317, No. 7160 (September 1998), pp. 703-713, ISSN 0959-8138
- Yeh, L. A., Rafford, C.E., Beyer, T.A. & Hutson, N.J. (1986) Effects of the aldose reductase inhibitor sorbinil on the isolated cultured rat lens. *Metab Clin Exp*, Vol. 35, No. 4 Suppl 1 (April 1986), pp. 4-9, ISSN 0026-0495

IntechOpen

IntechOpen



## **Diabetic Retinopathy**

Edited by Dr. Mohammad Shamsul Ola

ISBN 978-953-51-0044-7

Hard cover, 356 pages

**Publisher** InTech

**Published online** 24, February, 2012

**Published in print edition** February, 2012

The aim of this book is to provide a comprehensive overview of current concepts in pathogenesis, diagnosis and treatments of diabetic retinopathy. It provides a collection of topics written by excellent authors, covering discussions on advances in understanding of pathophysiology, immunological factors and emerging concepts, relating to clinical aspects and treatment strategies. The contents of the book will not only provide a resource for our knowledge but also improve diagnosis and treatment options for those patients who suffer vision loss due to diabetic retinopathy.

### **How to reference**

In order to correctly reference this scholarly work, feel free to copy and paste the following:

Akihiro Kakehashi, Ayumi Ota, Fumihiko Toyoda, Nozomi Kinoshita, Hiroko Yamagami, Hiroto Obata, Takafumi Matsumoto, Junichi Tsuji, Yoh Dobashi, Wilfred Y. Fujimoto, Masanobu Kawakami and Yasunori Kanazawa (2012). Prophylactic Medical Treatment of Diabetic Retinopathy, Diabetic Retinopathy, Dr. Mohammad Shamsul Ola (Ed.), ISBN: 978-953-51-0044-7, InTech, Available from:  
<http://www.intechopen.com/books/diabetic-retinopathy/prophylactic-medical-treatment-of-diabetic-retinopathy>

**INTECH**  
open science | open minds

### **InTech Europe**

University Campus STeP Ri  
Slavka Krautzeka 83/A  
51000 Rijeka, Croatia  
Phone: +385 (51) 770 447  
Fax: +385 (51) 686 166  
[www.intechopen.com](http://www.intechopen.com)

### **InTech China**

Unit 405, Office Block, Hotel Equatorial Shanghai  
No.65, Yan An Road (West), Shanghai, 200040, China  
中国上海市延安西路65号上海国际贵都大饭店办公楼405单元  
Phone: +86-21-62489820  
Fax: +86-21-62489821



© 2012 The Author(s). Licensee IntechOpen. This is an open access article distributed under the terms of the [Creative Commons Attribution 3.0 License](https://creativecommons.org/licenses/by/3.0/), which permits unrestricted use, distribution, and reproduction in any medium, provided the original work is properly cited.

IntechOpen

IntechOpen