

We are IntechOpen, the world's leading publisher of Open Access books Built by scientists, for scientists

6,900

Open access books available

186,000

International authors and editors

200M

Downloads

Our authors are among the

154

Countries delivered to

TOP 1%

most cited scientists

12.2%

Contributors from top 500 universities



WEB OF SCIENCE™

Selection of our books indexed in the Book Citation Index
in Web of Science™ Core Collection (BKCI)

Interested in publishing with us?
Contact book.department@intechopen.com

Numbers displayed above are based on latest data collected.
For more information visit www.intechopen.com



Chagas Heart Disease

Clara Isabel González and Julio César Mantilla
*Grupo de Inmunología y Epidemiología Molecular, GIEM,
 Facultad de Salud, Universidad Industrial de Santander
 Colombia*

1. Introduction

Chagas disease (CD) or American trypanosomiasis is a complex zoonosis produced by the infection with the intracellular protozoan parasite *Trypanosoma cruzi*. Although the disease was first described in 1909 by the Brazilian physician Carlos Chagas, this disease affects human beings since antiquity as it was demonstrated by paleoparasitology studies which proved the presence of DNA in mummies dating back to 9000 years old (Aufderheide et al., 2004; Guhl et al., 1999). The parasite *T. cruzi* is a hemoflagellate protozoan belonging to the Mastigophora class, Kinetoplastida order, Trypanosomatidae family, genus *Trypanosoma*, the group Stercoraria. It was named in honor of Oswaldo Cruz, who was the mentor of Carlos Chagas.

T. cruzi has a complex life cycle involving two hosts, an invertebrate, especially an insect vector and some vertebrates, including man and domestic and wild reservoirs (Tyler & Engman, 2001). The presence of CD in humans is purely accidental, as when the man came into contact with natural foci and caused ecological imbalances causing the adaptation of vectors to human dwellings and new food sources. Thus three overlapping cycles were established: the wild cycle, the peridomestic cycle and the domestic cycle (Coura, 2007). The parasite occurs in a variety of hosts and infects 150 species from 24 families of domestic (e.g., dogs, cats and guinea pigs) and wild animals (e.g., rodents, marsupials, and armadillos) (Rassi, et al., 2010). The vectors involved in the transmission of CD are insects of the Phylum Arthropoda, Class Insecta, Order Hemiptera, Family Reduviidae, belonging to the subfamily Triatominae. There have been reported approximately 130 species of wild and domiciliary triatomines although only a handful is the competent vector for *T. cruzi* (Schofield, 1981). The domestic species mainly colonize rural homes and peri-urban areas and these species are responsible for most human cases of Chagas disease in endemic areas. Sylvatic species are inhabitants of strict wild habitats such as cracks of rocks, bird nests or burrows of mammals and caves, among others. *Rhodnius prolixus* is the main domestic vector in the northern countries of South America and Central America, *Triatoma dimidiata* in Central America and *Triatoma infestans* in countries of the southern of South America (Guhl, 2007), these species are well adapted to human habitation.

T. cruzi presents four different morphological and biological forms: epimastigote, a replicative form located in the mid gut of the insect vector, it is the predominant form in the axenic culture; metacyclic trypomastigote develops in the posterior intestine and rectum of the insect vector and is the infective form; amastigote replicative stage, is located in the

cytoplasm of mammalian host cells where it replicates by binary fission; blood trypomastigote comes from amastigote differentiation, leading to disruption of the host cell and releases into the bloodstream, where they are taken again by the blood-sucking vector (Brener, 1971) (Figure 1)

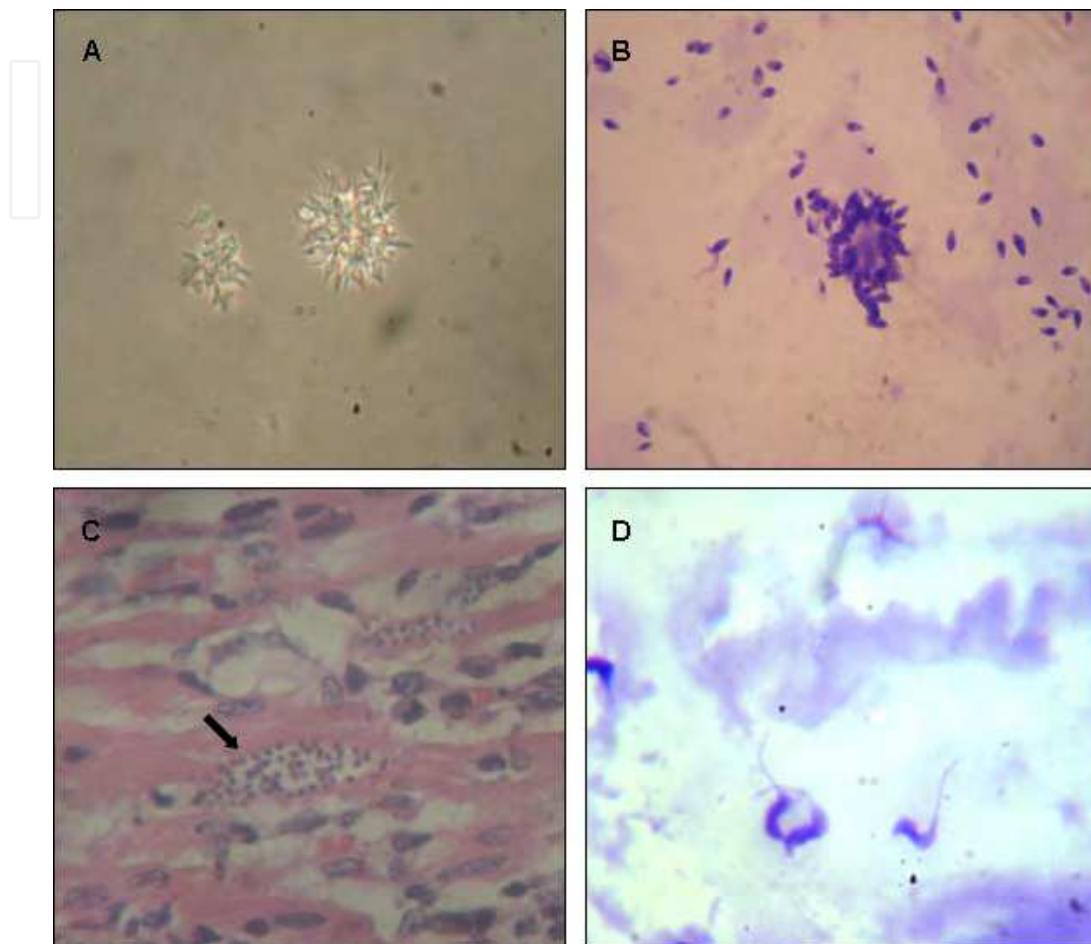


Fig. 1. *Trypanosoma cruzi* different stages. A) Epimastigotes of culture B) Amastigotes in Vero cells C) Nests of amastigotes in cardiac tissue D) Blood trypomastigotes stained with hematoxylin-eosin.

The classic forms of *T. cruzi* transmission are vectorial, congenital, by transfusion, through organ transplants and labour accident. Vector-borne transmission is the most common and is contaminative by the presence of the infectious form in the faeces of the vector which is released when feeding on the host. The trypomastigotes penetrate through the opening of the bite or loss of continuity due to scratching or active penetration of oral or ocular mucosa. Before screening programs in blood banks, transfusion was the second form of transmission by the presence in donor's blood or blood products infected with parasite forms (Schmunis, 1999). Another important source of transmission is the donation of organs from infected individuals with the development of acute Chagas in the immunosuppressed recipient (Barcan et al., 2005). The passage of the parasite from infected mother to her baby during pregnancy, childbirth or while breast-feeding is high in some endemic regions, specially in Bolivia. The congenital transmission can lead to abortions, premature births or infected babies (Torriconi et al., 2004).

2. The impact of Chagas disease

CD is currently is recognized by the World Health Organization (WHO) as one of the tropical neglected diseases and the infection with *T. cruzi* is the third parasitic infection after malaria and schistosomiasis (Schmunis & Yadon, 2010). CD is an important public health problem in 21 countries of South and Central America. The Pan American Health Organization (OPS, 2006) estimates that 7.7 million people are infected with *T. cruzi*, 109 million are at risk of infection and 12,500 deaths occur per year. The number of new annual cases of vector-borne infection is 41,000 and congenital Chagas' is 14,000 (WHO 2008). Although this disease is considered typical of rural areas and poor suburbs with inadequate housing conditions, in recent decades in many Latin American countries there has been a substantial migration from rural to peri-urban areas. Migration has not only occurred from rural to urban areas in Latin America, but also to developed countries of North America, Europe and Asia. Accordingly, further cases have been detected in non-endemic countries like the USA, Canada, Spain, Japan and Australia due to population migration from endemic countries. In the United States have reported more than 300,000 people infected with *T. cruzi* and in Spain from 40 to 60,000 (Bern & Montgomery, 2009; Gascon et al., 2010). The migration in endemic countries has led to the passive transport of vectors and the emergence of cases in areas considered of low endemicity. Additionally, the national initiatives for the elimination of the domestic vectors, including not only insecticide spraying but also a rural housing improvement, have led to the elimination of traditional vectors. However, a new transmission pattern is being introduced due to the presence of palms and trees located close to houses and sylvatic vectors that are attracted sporadically by light and feeding conditions. Consequentially, transmission by new vectors has arisen and often these vectors often have high rates of infection. This couple with the presence of wild reservoirs in the peridomestic area presenting high rates of infection has led to an alternate form to vectorial transmission in these areas, such as oral transmission (Briceño-León, 2009). This form of transmission is usually associated with acute and fatal outcomes and it has been increasing especially in the Brazilian Amazon where it is considered an emerging disease (Coura et al., 2002). The first report was given in 1960 in Teutonia with five deaths involved (Valente et al., 2009). Since then 600 new cases of acute Chagas have been reported, 50% associated with oral transmission. There are also reports in Venezuela (Alarcon de Noya et al., 2010), Mexico (Salazar-Schettino et al., 2011) and in the last three years in Colombia has increased, especially in Santander with six outbreaks of acute Chagas and three fatal cases (Díaz et al., 2009).

3. Clinical aspects of Chagas disease

3.1 Phases of Chagas disease

3.1.1 Acute phase

The clinic course of CD could have two phases: acute and chronic. The acute phase is characterized by the presence of *T. cruzi* trypomastigotes in the bloodstream, the parasitaemia generally persists for 4–8 weeks and it resolves spontaneously. In the majority of cases, especially in adults, this phase of infection is asymptomatic, however a small percentage of patients develops the acute disease characterized by important manifestations such as malaise, prolonged high fever, headache, edema, hepatomegaly, splenomegaly and generalized lymphadenopathy (Prata, 2001). In the acute form of CD, the first signs appear

7-10 days after infection. The Romana's sign is observed when the parasite penetrates the conjunctiva; but when the parasite penetrates through the skin the patient develops the chagoma at the site of inoculation. The adjacent lymph nodes to the site of entry of the parasite are generally compromised, which together with the conjunctival or eyelid lesions constitute the ophthalmic - lymphonodal complex. Approximately the fifty percent of the patients who develop the acute CD has Romana's sign, and one-quarter has the inoculation chagoma. The Romana's sign is characterized by painless, unilateral swelling of the upper and lower eyelid, with rose-violet coloration, congestion and edema of the conjunctiva, the submandibular, preauricular or other near lymphonode are enlarged, but not adhering to deep layers, occasionally may appear palpebral and periorbital cellulitis, sometimes with necrosis and abundant parasites. The inoculation chagoma generally appear on the skin of the face or the extremities, and is a forunculoid lesion, with a rose violet tone. In these patients, the initial electrocardiogram is normal, but after 2-3 weeks might show anomalies such sinus tachycardia, low QRS voltage or first grade atrioventricular block, the chest radiograph is also normal, however it might show cardiomegaly (Dias, 1989; Rassi et al., 2010).

The majority of patients, (90% or more) with acute CD survive the initial infection and remain healthy and asymptomatic, but a few individuals, between 2 -10%, generally infants or immunodepressed patients, or many people like children or adults who acquired the infection due to oral contamination, develop an acute and severe disease with myocarditis and cardiac insufficiency or with meningoencephalitis, clinical conditions that maybe cause death (Nobrega et al., 2009). Regarding to the central nervous system (CNS) involvement in CD, in the initial acute phase, the infection is asymptomatic and only a small percentage of cases develops encephalitis in the acute phase of disease; headache, seizure, focal neurologic signs and progressive decrease in consciousness are the notorious symptoms (Cordova et al., 2007).

3.1.2 Chronic phase

The great majority of patients, who were infected with *T. cruzi*, remain asymptomatic in the chronic phase, without abnormalities in the electrocardiogram and the radiological evaluations of the heart, esophagus and colon. This form of the chronic phase of CD is named indeterminate form, it is present in the half of infected people of endemic areas, and may persist until dead in 40-50% of the cases. All patients with the indeterminate form of CD are positive in serological or parasitological examinations, and do not have symptoms or signs of the disease, but using specialized methods such as ambulatory electrocardiographic monitoring or endomyocardial biopsies, may demonstrate that they have at least some degree of cardiac damage. The morphologic features of the indeterminate form of CD in autopsies performed for us in individuals who died of other causes, include discrete focal infiltration of mononuclear cells with lymphocytes predominance, and mild interstitial fibrosis, these changes are notorious in the subendocardial zone, and near to the cardiac conduction system. The change from the indeterminate form to the determinate cardiac or digestive occurs slowly in a lapse of 10 - 20 years after the initial infection, in a few cases, approximately 2-3% per year. In these patients, the CD adopts a slow and benign course, but others develop dilated cardiomyopathy, heart congestive failure or arrhythmias. In sporadic cases the CD progresses directly from the acute form to determinate chronic form of human CD, and is named the subacute form, that generally affects young adults, these patients develop severe cardiopathy with cardiac failure (Marin-Neto et al., 1999).

In the chronic phase of CD, the fundamental morphological feature in patients with chronic chagasic cardiopathy (CCC) is a mixture of cellular infiltration of lymphocytes and monocytes with few plasma cells, and fibrous tissue, that correlate with diverse clinical symptoms and signs, since asymptomatic to a congestive syndrome with damage of conduction system, arrhythmias, disturbances in the ventricular repolarization and the extrasystoles. Thromboembolic phenomena due to cardiac mural thrombosis are also frequent. In the majority of these patients, in the thorax radiographs, the heart contour appears normal. In some cases the lack of symptoms is surprising, and it does not have correlation with damage of tissue detected under microscopical examination. The symptomatic patients with CCC related palpitations by arrhythmias or fatigue by cardiac failure. In the physical examination, the arrhythmias and the extrasystoles are the most frequent clinical features detected. In these patients, the cardiac failure has a slow and progressive course, generally with features of right failure predominating the legs edema, jugular ingurgitation, ascites, and hepatomegaly. The thromboembolic manifestations due to mural thrombosis are frequent, and in autopsies done by us, the pulmonary thromboembolism is the most common anatomopathological feature, although brain embolism is also recognized in a few cases. After the manifestations of cardiac failure, the patients may recover or die in a later episode to one year after the first symptoms of decompensation. In these patients the perianglioneuritis with reduction of neuronal bodies especially in the sympathetic system, the sinus node fibrosis, and destruction of tissues of cardiac conduction system and the myocardial cells are related with the early alterations of autonomous nervous system. The described changes can explain the reduction of the response to cardiovagal reflex in the sinus node, and the reduction of variability of the heart frequency. The cardiovagal denervation increased the sympathetic tone and could explain why the arrhythmias, blockades and sudden death are the first clinical manifestations in these patients (Samuel et al., 1983; Rassi et al., 2001).

The digestive form of CD is present almost exclusively in Argentina, Brazil, Chile and Bolivia, although they have reported isolated cases in Colombia, Central America and Mexico. The symptoms are the consequence of achalasia. The dysphagia is the first disturbance that may lead to malnutrition and weight loss. Odynophagia and epigastric pain also occurs in cases of megaesophagus, and chronic constipation, abdominal distension and occasionally intestinal obstruction of large bowel in cases of megacolon (Florez et al., 2010).

3.2 Pathological anatomy

The changes described below are the product of the experience gathered in the practice of autopsies of patients who died of various forms of CD, and reflect the interaction between inflammatory response, cellular damage and alterations of the extracellular matrix, three pathologic processes generated by the parasite in the tissues, particularly in the heart, esophagus, colon and central nervous system.

In the acute phase when the infectious forms of *T. cruzi* penetrate in the cell, such macrophages, fibroblasts, Schwann cells, and myocytes, they transform in amastigotes, subsequently reproduce and form the parasitic nest or pseudocyst, after 3 – 5 days the parasite differentiates to trypomastigote, the pseudocyst enlarges, breaks the cell, releasing intact or degenerate forms of the parasite, which act in the interstitium as a particle that promotes the inflammatory response. In these cases the heart is enlarged, congestive, flaccid

with haemorrhagic foci on the epicardic surface, and at the cut, the cardiac chambers are dilated and the myocardium shows areas of haemorrhage and necrosis (Figure 2 A and B). In the microscopic examination, the extent of the inflammatory response is proportional to the number of pseudocyst and damaged cells. A dense interstitial infiltration of lymphocytes, macrophages, with a few neutrophils and eosinophils around the pseudocyst and damaged cells is observed in the acute severe form of CD (Figure 2 C and D).

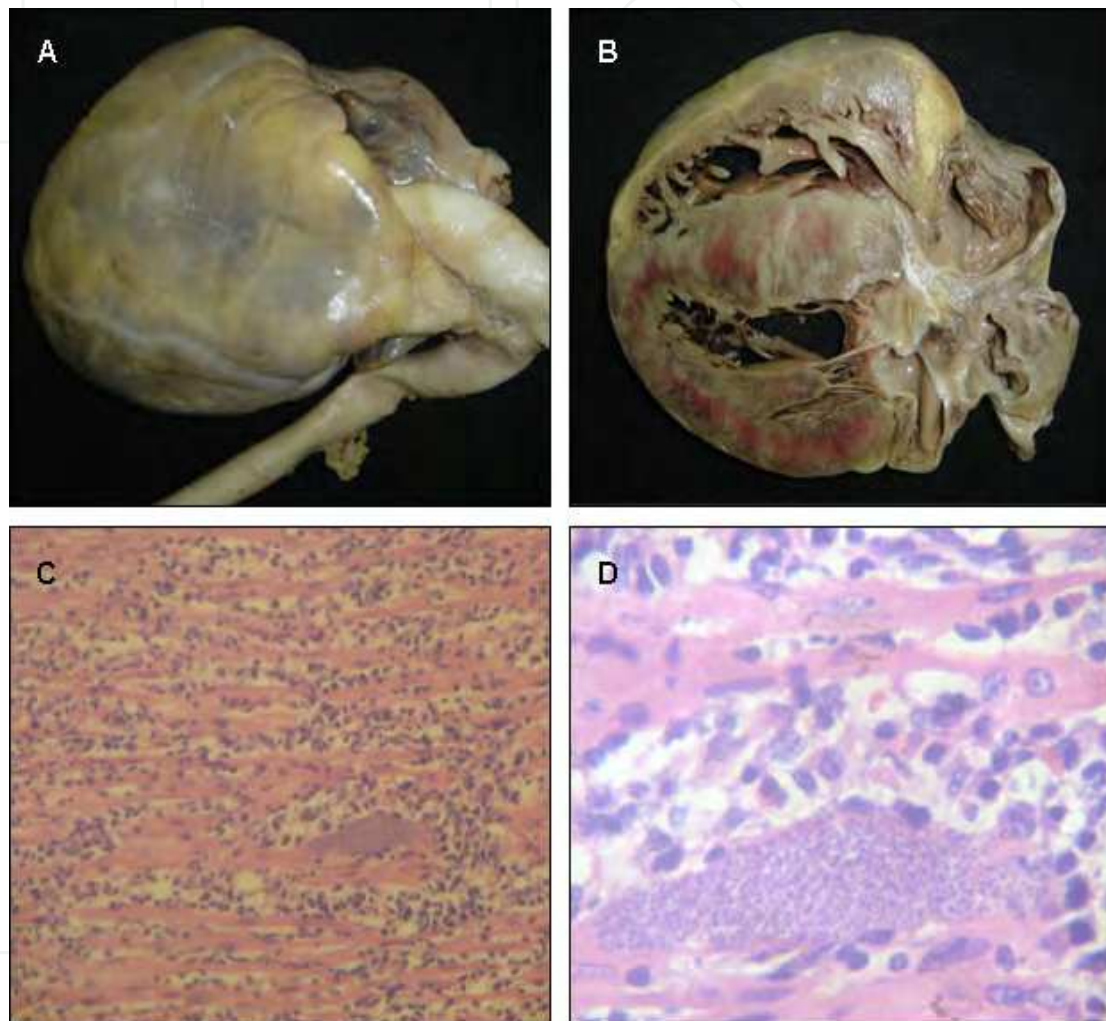


Fig. 2. Acute Chagas heart disease A) Heart enlarged with rounded shape. B) The surface of cut shows dilatation of four chambers, with pale and red areas, which correspond to focus of inflammation, necrosis and haemorrhage C) Nest of *Trypanosoma cruzi*, dense interstitial infiltrate of lymphocytes, plasma cells and monocytes with necrosis of myocardial cells D) Nest of *Trypanosoma cruzi* with rupture of myocardial cell and infiltrate inflammatory of mononuclear cells.

In the chronic phase of CD, the most important feature in chagasic cardiopathy, is the enlarge of heart with dilatation of chambers, mural thrombus (Figure 3A) and the mixture of cellular infiltration of lymphocytes, monocytes with a few plasma cells, and fibrous tissue (Figure 3B). In the adipose tissue of epicardium there are mononuclear cells with predominance of lymphocytes, which are more abundant around the nervous fibers and ganglionar cells (Figure 3C and 3D).

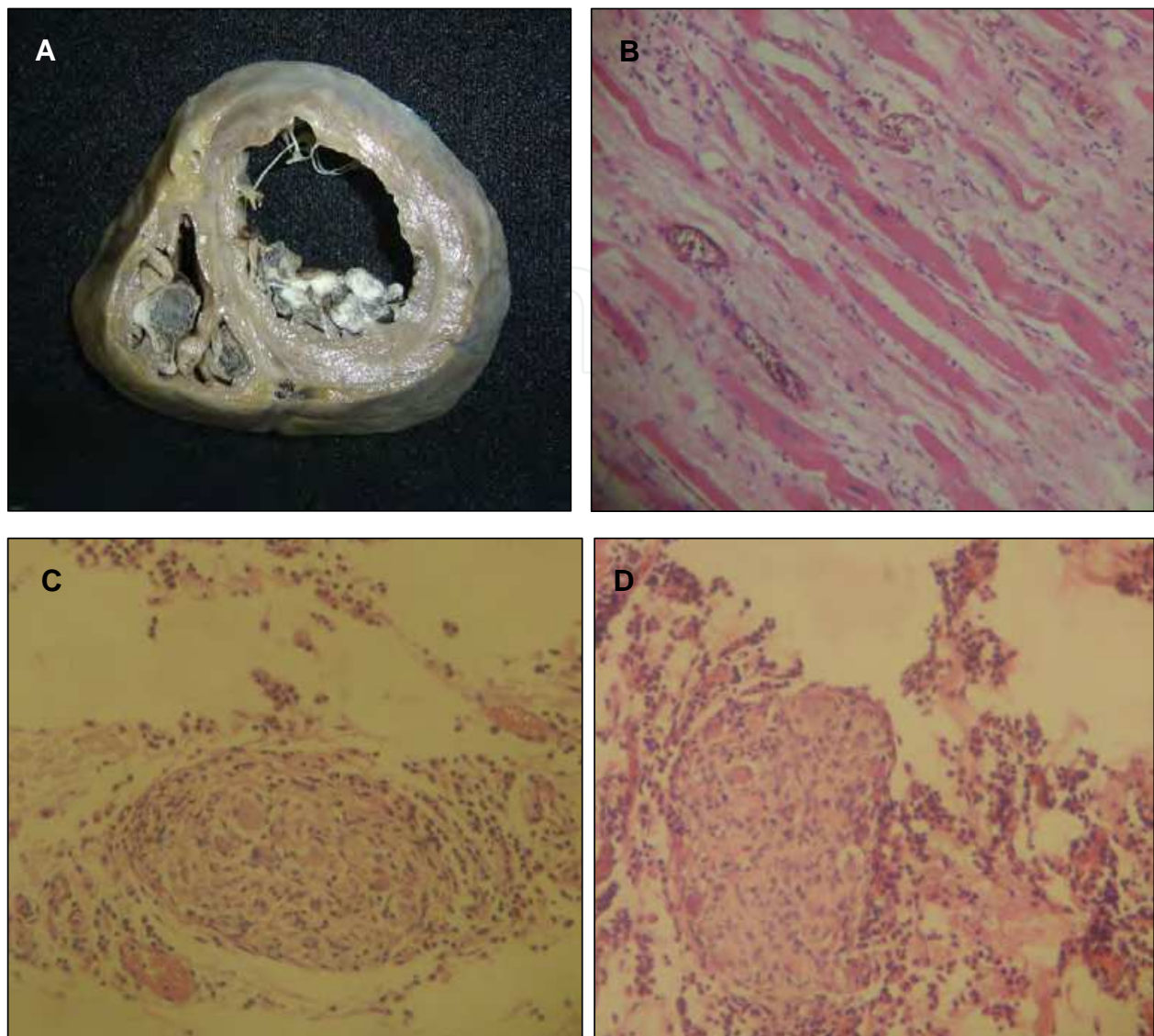


Fig. 3. Chronic Chagas heart disease A) Heart enlarged with dilatation of ventricles and mural thrombus B) Separation of the myocardial fibers, edema, abundant fibroblasts with extracellular matrix increase, and scarce mononuclear inflammatory cells. C and D) Marked infiltration of lymphocytes and plasma cells around the nervous fibers and ganglionic neurons of cardiac plexus.

In case of oral transmission of the parasite, in the esophagus mucosa there are abundant lymphocytes and histiocytes, but the parasites are scarce or not identified (Zafra et al., 2008; Mantilla et al., 2010). In the digestive form of the CD, the megaesophagus and megacolon are the result of destruction of neuronal bodies of intramural autonomic nervous ganglia of Meissner and Auerbach of the digestive tube in these sections.

4. Diagnosis and treatment

4.1 Laboratory diagnosis

The diagnosis of *T. cruzi* infection depends on the phase of infection, in the acute phase the patent parasitemia allows the use of parasitological methods to see or culture the parasite in

the first weeks. The diagnosis is difficult in the chronic phase, mainly due the very low or intermittent parasitemia, therefore, the serological methods are usual. Additionally, CD endemic areas also present endemicity of other parasites especially *Leishmania sp.* and *T. rangeli* (Gomes et al., 2009). This fact leads to the serological methods which present high sensitivity but lack of specificity because of antigenic cross-reactivity. Therefore, the World Health Organization recommends that at least two assays based on different techniques should be used. The serological methods frequently used in the diagnosis of CD are enzyme-linked immunosorbent assays (ELISA), indirect hemagglutination assays (IHA), immunofluorescence indirect assays (IFI), immunoblotting assays (IB), and immunochromatographic assay. These methods used crude antigens but recombinant proteins and synthetic peptides are being used to improve the specificity (Hernandez et al., 2010; Praast et al., 2011; Umezawa et al., 2001; Umezawa et al., 2004).

On the other hand, molecular methods, in particular amplification by the polymerase chain reaction (PCR), provide an alternative diagnosis of CD (Gomes et al., 1999) specially to confirm diagnosis in case of inconclusive serology; in addition, it has been performed nested-PCR assays (N-PCR) (Marcon et al., 2002), quantitative real-time PCR assays (qRT-PCR) (Piron et al., 2007) and oligochromatography assays (OligoC) (Deborggraeve et al., 2009) to improve the detection of *T. cruzi* DNA.

4.2 Treatment

The treatment of CD is aimed at two main aspects: the removal of the parasite and the symptomatic management of cardiac manifestations. The options for the treatment of CD are restricted to the use of two drugs, the nifurtimox and the benznidazole. These drugs are indicated in the acute phase of infection, congenital forms, reactivation associated with immunosuppression especially in children and young adults with infections transmitted by blood transfusion and organ transplantation. Although the benznidazole have proven to be effective in the early stage of chronic infection its effectiveness at the late stage is limited. Both drugs produce serious complications such as neurological toxicity, depression, anorexia, vomiting and depression in bone marrow. Antitrypanosomal treatment in mild and late stage Chagas disease is under study by the BENEFIT trial (Rassi et al., 2010). The drug resistance is a major problem in the treatment of infectious and tropical diseases. In CD has a strong impact on the increase in the number of therapeutic failure aggravated by the few options of treatment, currently, there are numerous efforts in the search for treatment alternatives.

The amioradone is used in the management of cardiac symptoms especially for patients with sustained ventricular tachycardia, and for those with non-sustained ventricular tachycardia and myocardial dysfunction. Patients haemodynamically unstable, and those resuscitated from sudden death are treated with implantable cardioverter defibrillators (Rassi et al., 2010).

5. Pathogenesis and pathophysiology

The pathogenesis of CD is a process that is not fully understood. Most individuals infected with *T. cruzi* do not develop an acute phase and the injury to the myocardium and nervous system is directly related to tissue parasitism. The rupture of the nests of parasites in the tissues releases antigens of *T. cruzi* sensitizing cardiac and neuronal fibers,

leading to the destruction of these cells by anti-*T. cruzi* response mediated by CD8+ and CD4+ lymphocytes (Palomino et al., 2000). For the chronic phase, different mechanisms have been proposed; it is currently accepted that the inflammatory response generated by the parasite, which has not been eliminated by the immune system induces chronic inflammation in some individuals leading to tissue damage (Tarleton, 2003). There are several factors that directly or indirectly contribute to the progression and therefore evolution of the CD in the host. Some of these factors are inherent to the parasite, as the virulence related to their tissue tropism, their genetic and antigenic features, others are related to the host, such as age, race, nutritional status, immune response and genetic constitution (Dutra & Gollob 2008).

5.1 Associated to *T. cruzi*

T. cruzi presents a great heterogeneity both genotypic and phenotypic (Tibayrenc et al., 1993) and consists of different populations which circulate among humans, vectors, domestic animals and wild reservoirs. These populations show different behaviors in terms of parasitaemia, virulence, pathogenicity, interactions with host cells, tissue tropism and sensitivity to drugs. *T. cruzi* has been classified into several groups, initially using biochemical markers (zymodemes) and subsequently molecular markers (esquizodemes, clonets and lineages). The last meeting of experts standardized the nomenclature of *T. cruzi* and accepted the existence of six discrete typing units (DTUs) called TCI-VI (Zingales et al., 2009). The heterogeneity of *T. cruzi* extends to the forms and severity of clinical presentation with a particular geographical distribution. In Brazil, Tc I is present in the sylvatic cycle of transmission with low parasitemia in humans and experimental animals, therefore it is considered non-virulent, except for some reports of the Amazon (Texeira et al., 2006). By contrast, in this country Tc II is involved in the domestic cycle of transmission and causes high parasitemias, human infections and both heart and gastrointestinal diseases (Zingales et al., 1998). The same behavior is observed in other southern countries of South America as Argentina, Chile, Paraguay and Uruguay. By contrast, in the northern countries of South America and Central America predominates Tc I associated with heart disease and involved in both domestic and sylvatic cycle (Higo et al., 2004). Recently, our group reported the presence for both groups for the first time, Tc I and Tc II group in blood of seropositive individuals to antigens of *T. cruzi* associated with chagasic cardiomyopathy (CC) (Zafra et al., 2008, Gonzalez et al., 2010). The two groups were also identified in tissues of deceased patients with CC, with predominance of Tc I (Zafra et al., 2011). One individual presented a mixed infection with Tc I and Tc II, but Tc II was the group associated with cardiac involvement (Mantilla et al., 2009).

5.2 Associated with the host

5.2.1 Innate immune response

In recent years, new data related with interaction between innate immune cells and *T. cruzi* have been presented. This interaction is crucial in controlling parasite replication and removal by the action of phagocytic cells, activation of antigen presenting cells and natural killer cells (NK) in the host tissue. The innate immune cells recognize pathogen associated molecular patterns (PAMPs) through their pattern recognition receptors (PRR). The best characterized PRRs are Toll-like receptors (TLRs), which are expressed in the cell membrane or are located intracellularly. When TLRs recognize microbial components, it induces

signals responsible for the activation and production of inflammatory cytokines and chemokines (Akira & Takeda, 2004). In *T. cruzi*, TLR2 was the first receptor identified which recognizes glycosylphosphatidylinositol (GPI)-anchors mucin-like glycoproteins, distributed to the cell surface membrane of *T. cruzi* trypomastigotes (Campos et al., 2001). This receptor also recognizes the *T. cruzi* protein Tc52 and induces dendritic cell activation (Ouaissi et al., 2002). The TLR4-MD2 complex recognizes glycoinositolphospholipids containing ceramide (GIPL) (Bafica et al., 2006) and TLR9 recognizes DNA rich in CpG sequences. The TLR-mediated MyD88 signaling pathway induces pro-inflammatory cytokines as TNF- α and IL-12 and stimulates the production of nitric oxide (NO) involved in parasite clearance (Bafica et al., 2006). Other mechanisms for the TLR-independent recognition of *T. cruzi* have been described and involved the molecule NOD1 that induces type I IFNs (Kayama & Takeda, 2010). Innate immunity in turn acts as an immunomodulatory specific immune response through the generation of the microenvironment of cytokines that regulates the differentiation of effector T cell subpopulations (Bilate & Cunha-Neto, 2008, Dutra et al., 2009).

5.2.2 Adaptative immune response

The role of the adaptative immune response in the pathogenesis of CD has been subject of much controversy, for decades the role of the autoimmune component was accepted as directly responsible for heart damage (Takle & Hudson, 1989). This was supported by the detection of autoantibodies against cardiac antigens, chronicity and difficulty of finding parasites in affected individuals (Cunha-Neto et al., 1995). However, the development of more sensitive molecular tests that allowed detection of low numbers of parasites, the fact that immunosuppressed patients developed acute and severe CD and experimental models showed that the parasite, even in small amounts was essential for the development of the disease (Zhang & Tarleton, 1999; Tarleton, 2003). The presence of autoantibodies may be explained by the release of autoantigens as the result of the immune response against the parasite (Cunha-Neto et al., 1995).

Currently, the role of chronic inflammation and unbalance of the immune response generated by the parasite is accepted as responsible for the damage and tissue regeneration associated with organ dysfunction (Dutra & Gollob 2008). Although heart inflammatory cells contribute to control parasite growth, they are also involved in perpetuating inflammatory infiltrate. In chagasic patients the cellular infiltrate consists mainly of T lymphocytes with a predominance of CD8⁺ cells but also contains CD4⁺ cells and macrophages. Both CD8⁺ cell and CD4⁺ exhibit characteristics of activated T cells and correlate with the expression of inflammatory cytokines such as TNF- α and INF- γ and a smaller number of regulatory cells producing IL-10 (Araújo et al., 2007). Patients with chronic CC have higher serum levels of TNF- α and CCL2 compared with asymptomatic individuals (Talvani et al., 2004). In this context, cytokines, chemokines, receptors and signaling pathways associated with activation of pro-inflammatory proteins and with low expression of immunoregulatory proteins will be clearly associated with the immunopathogenesis of CD. This coupled with the fact that most infected individuals remain asymptomatic throughout life and only between 15 to 30% of them developed the disease demonstrates the importance of host genetic component. Thus individuals with genetic predisposition to proinflammatory phenotype in the presence of *T. cruzi* would be those that develop chronic and severe forms of the disease.

6. Chagas disease as a complex disease

6.1 Human genome variation

The variation in the human genome sequence plays an important role, yet little known in the etiology of many diseases. The establishment of the association between genotype and phenotype is crucial for understanding biological processes and in the case of disease, pathogenic mechanisms that lead to their development. For monogenic diseases, the methods of genetic linkage and physical maps facilitated the identification of mutations responsible for the phenotype associated with pathology. Thus numerous Mendelian-type diseases were identified. However, most common diseases are complex and multifactorial; therefore, are the result of the effect of multiple genetic variants on the phenotype and their interaction with environmental factors. In the case of infectious diseases is known that not only the genotypic and phenotypic differences of the microorganism determine the development of a particular disease, but also the variation in the host genome may have an important role in the development of resistance or susceptibility.

6.2 Single nucleotide polymorphisms (SNP)

SNP type polymorphisms are the most common forms of genetic variation in the human genome, currently the common SNPs estimated density is about 10 to 15 million (The International HapMap Consortium 2007, <http://www.hapmap.org>). Its usefulness as genetic markers associated with various infectious and noninfectious diseases has been amply demonstrated (Pacheco & Moraes, 2009). The SNPs have been the markers most commonly used for its stability, low mutation rate and are plentiful throughout the genome, being found in exons affecting the protein function, in introns or regulatory regions affecting gene expression and therefore the processing and maturation of the messenger, or many of them have been identified in intergenic regions with effect unknown over gene expression or phenotype (Frazer et al., 2009). Numerous reports using one or more polymorphisms have been published (Pacheco & Moraes, 2009), but most of them only explain less than 5% of the observed contribution of the genetic component to the risk of disease. This fact substantially limits the use of these markers to predict risk and in some cases the results have been controversial. One of the main problems with these studies is that in many cases it is not known a direct effect on the phenotype and in common diseases the effect is modest. Therefore, it is necessary to identify other variables involved and the interaction among them (Feero et al., 2010). Another limitation in this type of study is related to the number of SNPs, which in an individual genome is from 3 to 4 million and in the human genome it is estimated between 10 to 11 million (Frazer et al., 2009). Thus an individual would require testing thousands of polymorphisms to identify genes involved in susceptibility to a particular pathology.

The International HapMap Project (The International HapMap Consortium 2003-2007) has overcome some of the difficulties in mapping SNPs and identification of susceptibility genes in complex diseases. The advances are related with the reduction in the number of SNPs to be genotyped, increased statistical power and the accurate mapping in association studies. This project HapMap anticipates building a database for common haplotypes in different human populations (www.hapmap.org). When the markers are in linkage disequilibrium (LD) in the population, there is redundant information. If two markers are in complete LD, each of the genotypes of a SNP is completely determined by the other, thus the genotyping of one will suffice for the information of the two (Conrad et al., 2006). The selection of non-redundant markers present in an area with high density of markers has been called "haplotype tagging"

and the SNPs selected by this method are called "tag-SNPs" or label SNP (de Baker et al., 2006). The main objective of this haplotype tagging is to reduce the number and cost of genotyping, keeping most of the information that they contain (Daly et al., 2001). The technological progress in the last decade, related to the development of high density maps of markers, maps of linkage disequilibrium and haplotypes (Cardon & Abecasis, 2003), the use of microarrays for genotyping of SNPs (Steemers & Gunderson, 2007) and bioinformatics tools have helped overcome some of these difficulties. Based on these developments, in recent years the genome scans (GWAS) have popularized (Cheung et al., 2005; Galvan et al., 2010). In fact, after 5 years of the first GWAS, which identified the association of complement factor H with macular degeneration related to age (Klein et al., 2005) there have been published more than 450 GWAS and associations with more than 2000 SNPs in numerous human diseases such as type 1 and 2 diabetes, Crohn's disease, rheumatoid arthritis, prostate cancer, breast, tuberculosis and visceral leishmaniasis among many others (Manolio 2010; Ku et al., 2010). Many of these studies have identified markers on genes already known for its role in the pathogenesis of the disease, but others have also identified strong associations with genes that apparently have not relation with the characteristic of the disease process (Frazer et al., 2009).

6.3 Human genome variation in Chagas disease

The chronic CD courses in 70% of individuals without symptoms and only between 15-30% of infected individuals have cardiac involvement and/or digestive, with different levels of severity and mortality. This clearly suggests the role of the individual genetic component in disease development, a fact that is reinforced with the identification of strains of mice with different susceptibility phenotypes. The C3H strain develops cardiac lesions similar to human chagasic cardiomyopathy, the A/J phenotype presents different pathology and DBA/2 is totally resistant (Marinho et al., 2004). The association related with genetic susceptibility or resistance to infection with *T. cruzi* in human has been demonstrated in some epidemiological studies related to the molecules of the major histocompatibility complex (MHC) (Llop et al., 1991; Fernández-Mestre et al., 1998; Nieto et al., 2000; Layrisse et al., 2000; Williams-Blangero et al., 2003; Moreno et al., 2004).

The identification of biomarkers to establish an association with the risk of developing the disease is critical because could be used not only in prevention and prognosis but also as a therapeutic target. It is now clearly accepted that the immune response is crucial in the pathogenesis of CD and especially the role of the chronic inflammation in the tissular damage (Dutra & Gollob 2008). The balance between anti-inflammatory and pro-inflammatory cytokines and their receptors is crucial in determining whether *T. cruzi* parasites will be eliminated without causing tissue damage. Thus, the lack of efficient immunoregulation in cardiomyopathic patients could contribute to clinical forms of CD. In this sense, case-control studies have searched association between onset or severity of the disease and the functional polymorphisms of genes known to participate in host inflammatory response.

6.3.1 Variation in pro-inflammatory cytokines

In CD, it has been observed that patients infected with *T. cruzi* display increased levels of plasma TNF- α compared to non-infected individuals, where plasma TNF- α levels were 4-fold higher in asymptomatic and cardiomyopathic patients with left ventricular ejection fraction (LVEF) >50% and 8-fold higher cardiomyopathic patients with LVEF \leq 50% than non-infected individuals (Ferreira et al., 2003). In fact, the measurement of TNF- α level has been suggested as a tool to identify patients with heart dysfunction (Talvani et al., 2004).

Some positive associations have been observed in Mexican and Brazilian populations, between polymorphisms of regulatory region of *TNFA* gene and CC (Rodríguez-Pérez et al., 2005; Drigo et al., 2006; Pissetti et al., 2011). The most studied allelic form (*TNFA* -308) has functional implication because it affects the TNF- α level. However, discrepancies have been observed with Peruvian and Brazilian populations in which the frequencies of genetic variants were similar in asymptomatic individuals and CC patients (Beraún et al., 1998; Drigo et al., 2007). These differences could be affected by some factors. Among the most important factors would be: sample size, genetic differences between populations, criteria for the selection of controls (study design), linkage disequilibrium with HLA genes and influence of other polymorphisms present in the same region. Some polymorphisms of *TNFA* gene show a high level of LD, and the haplotypes formed by these variants could be affecting levels of protein expression (Figure 4). In Colombian population of highly endemic area we also found associations with genetic variants in *TNFA* and *TNFR2* genes (Criado et al., publication process). Unlike other chronic inflammatory diseases such as rheumatoid arthritis in which the blocking of TNF- α has been used successfully in treatment, in CD the experimental evidence using animal models showed that TNF- α blockade enhances left ventricular dysfunction (Bilate et al., 2007). Therefore, it is necessary to understand the regulation of the expression of TNF- α and its receptors and the effect of host polymorphisms for the use of therapeutic strategies with target TNF- α .

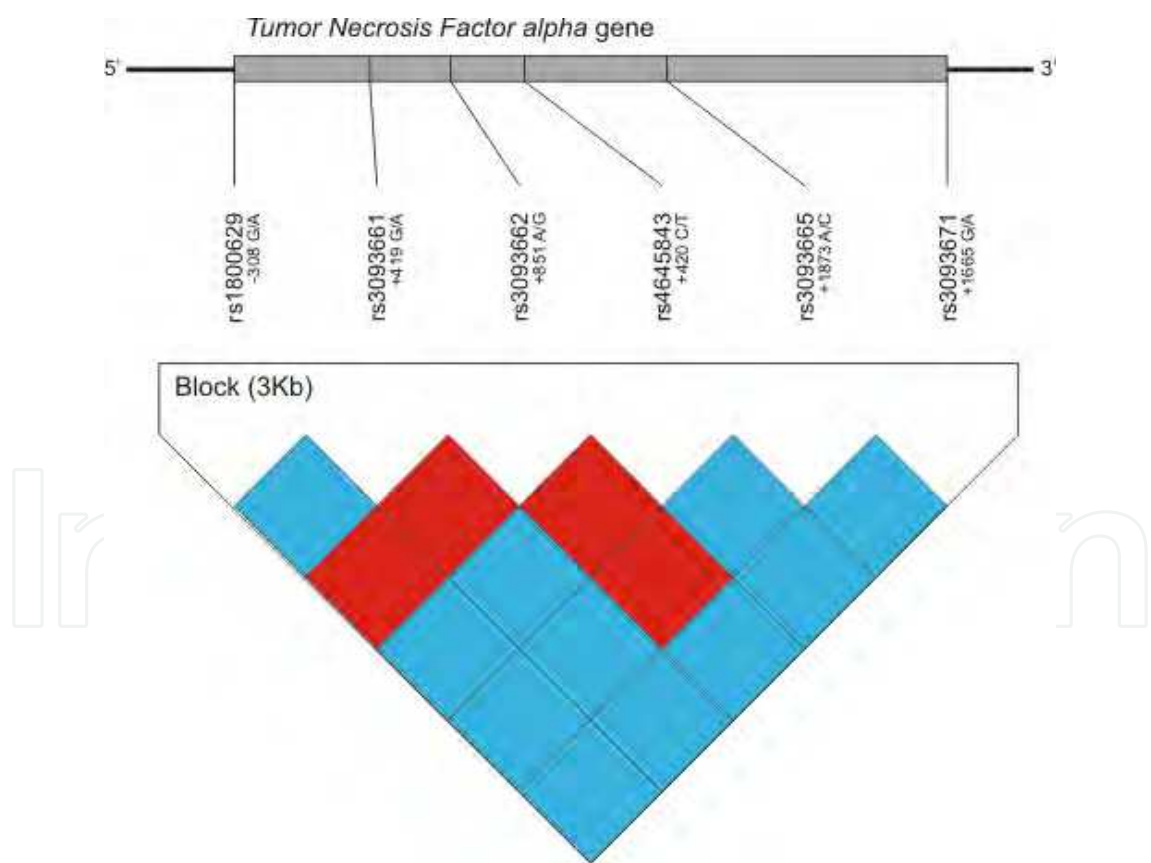


Fig. 4. Plot of LD across the *TNFA* gene. The image shows a high-resolution LD association plot between SNPs located in the *TNFA* gene, D' values are reported in the boxes and represented by color, which ranges from red (higher D' scores) to white (lower D' scores). The SNP nomenclature is presented as numbers that refer to the position of polymorphism in the gene.

In our study population we also found associations of functional polymorphisms present in other pro-inflammatory cytokine genes such as *IL1B* (Flórez et al., 2006), *IL12B* (Zafra et al., 2007), *IFNG* (Torres et al., 2010), and lack of association with *IL6* (Torres et al., 2010) (Table 1).

6.3.2 Variation in chemokines and chemokine receptors

The inflammatory infiltrate of mononuclear cell is driven by a set of specific chemokines that determine the type of cells present in the tissue. Chemokines and chemokine receptors play an important role in mediating the extravasation and accumulation of specific effector and memory cells in chronic inflammatory processes in several diseases. In CD there is experimental evidence in patients with CC and models of *T. cruzi* infection that show that chemokines and chemokine receptors may be relevant mediators of leukocyte influx, which is involved in the pathogenesis of the disease (Teixeira et al., 2002; Marino et al., 2004; Talvani et al., 2004; Machado et al., 2005; Gomes et al., 2005; Guedes et al., 2010; Manque et al., 2011). Genetic variants in genes of chemokine receptors as *CCR5* have been also studied in Peruvian and Venezuelan populations with the identification of a protection marker (Calzada et al., 2001; Fernandez-Mestre et al., 2004). *CCR5* gene polymorphisms had been extensively studied in HIV and have been defined haplogroups which are affecting the transcriptional activity (Gonzalez et al., 1999). These haplogroups are composed by different combinations of *CCR2* and *CCR5* SNPs (Figure 5). Analyzing individual polymorphisms we found association between *CCR5*-2733 polymorphism and CC and also in four variants present in haplogroup HHE (*CCR2* +190, *CCR5* -2733, -2554 and -1835).

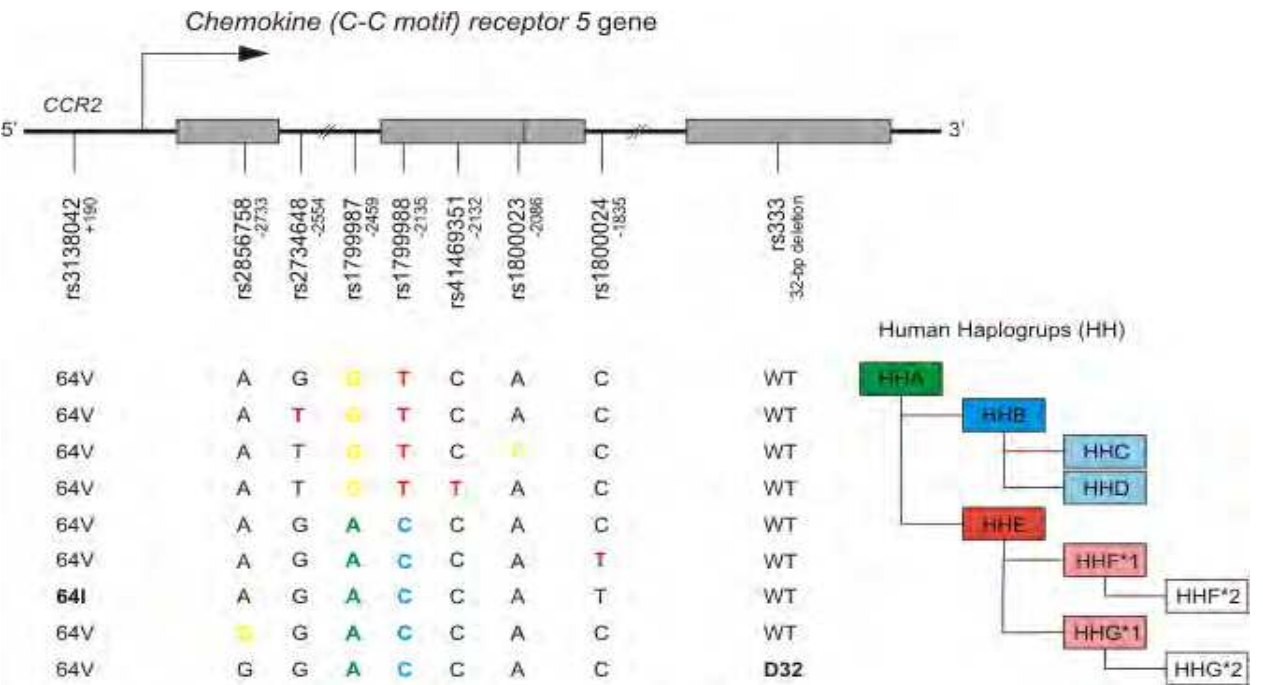


Fig. 5. Human haplogroups of *CCR2* and *CCR5* polymorphisms.

No association was observed with polymorphisms analysed in the chemokines *CCL5* and *CXCL8* genes (Flórez et al., publication process). The genetic variant – 2518 in the chemokine *CCL2/MCP1* promotor gene was associated with CC in Brazilian population (Ramasawmy et al., 2009).

6.3.3 Variation in anti-inflammatory cytokines

Monocytes of patients with the indeterminate form, but not patients with CC showed high expression of interleukin 10, suggesting a lack of immunoregulation in these patients (Costa et al., 2009; D'Avila et al., 2009). The anti-inflammatory cytokines, such as interleukin 4 and IL-10, promote Th2 differentiation and limit Th1 response (Jankovic et al., 2001). This polarization favors the permanence of the parasite in the myocardium but keeps the inflammatory response under control, which appears to be important for avoiding the development of CC (Higuchi et al., 2003; Cunha-Neto et al., 2005). Different groups have found markers associated with decreased production of anti-inflammatory cytokines in patients with CC (Costa et al., 2009). We have analyzed other genes of regulatory proteins, such as *TGFB1* (Calzada et al., 2009), *MIF* (Torres et al., 2009), *IL4*, *IL4RA* and *IL10* (Florez et al., 2011) which are associated with CC. However, in the latter gene we were unable to demonstrate association between *IL10* gene polymorphism and CD. Other pro-inflammatory and anti-inflammatory genes have been analyzed, such as *BAT1* and *IKBL/NFKBIL1*, *MAL/TIRAP* (Ramasawmy et al., 2006 and 2009), *PTPN22* (Robledo et al., 2007), *CTLA4* (Fernandez-Mestre et al., 2009) (Table 1).

There are few reports of genome mapping applied to the study of CD in murine models which showed a possible region of susceptibility to the disease directly related with survival to infection in the murine H-2 locus, which corresponds to the human Major Histocompatibility Complex (MHC) located in chromosome 17 (Wrightsmann et al., 1984). In a more recent study, the entire genome of mice strains susceptible and resistant were mapping at intervals of 10-15 cM with microsatellite. The regions with marked influence in the severity of CD, are mainly located on chromosome 17 on the murine MHC, but were also identified as candidate regions on chromosomes 5 and 13 (Graefe et al., 2003, 2006). In humans, chromosomal mapping studies on CD have not been reported. All this evidence showing the association of multiple genes and the development of CD, as in other infectious and noninfectious diseases, suggests that susceptibility/resistance to develop CD would be determined by variations in a large number of polymorphic genes. In fact, a single SNP can not fully explain the susceptibility or resistance to a complex disease. Therefore, the genetic susceptibility to *T. cruzi* infection and the development of cardiomyopathy is complex and heterogeneous and likely to involve multiple genes, each with a modest contribution on the pathogenesis of the disease. The availability of high throughput methods enabling of genotyping individual DNA samples at 500,000 or more loci using SNP chip have led to genome wide association studies (GWAS) of more than 40 diseases and human phenotypes (Manolio, 2010). Despite the current limitations and the adjustments of bioinformatic tools for analyzing this vast amount of information, these studies of genomic medicine would allow in a near future obtain the individual genetic profiles and define the genes underlying the phenotype associated with the disease and its severity.

Genes	SNP	Population	Association	Reference
Innate immunity				
<i>TLR 2</i>	R753Q	Colombian	negative	Zafra
<i>TLR4, TLR9</i>	D299G, -1237	Colombian	negative	Zafra
<i>TLR 1,2,4,9</i>	I602S, R753Q, D299G, R392stop codon, -1237, -1486	Brazilian	negative	Ramasawmy
<i>MAL/TIRAP</i>	S180L	Brazilian	CC	Ramasawmy
Pro-inflammatory genes				
<i>NOS</i>	microsatélite	Peruvian	negative	Calzada
<i>NRAMP</i>	-236	Peruvian	negative	Calzada
<i>TNFA</i>	-308	Peruvian	negative	Beraún
		Mexican	CC	Rodriguez-Pérez
		Brazilian	negative	Drigo
		Brazilian	negative	Pissetti
		Colombian	CC	Criado
	-238	Peruvian	negative	Beraún
		Mexican	negative	Rodriguez-Pérez
		Brazilian	negative	Drigo
		Brazilian	CC	Pissetti
	-1031	Colombian	negative	Criado
<i>TNFR2</i>	+676 (M196R)	Colombian	monomorphic	Criado
<i>LTA</i>	+80, +252	Brazilian		Ramasawmy
<i>IL1B</i>	+5810	Colombian	CC	Flórez
	-31,-511, +3954	Colombian	negative	Flórez
		Mexican		Cruz-Robles
<i>IL1RN</i>	+8006, +8061, +11100	Colombian	negative	Flórez
		Mexican		Cruz-Robles
<i>IL1A</i>	-889, +4845	Colombian	negative	Flórez
<i>IL12B</i>	+1188	Colombian	CC	Zafra
<i>IFGN</i>	+874	Colombian	CC	Torres
<i>IL6</i>	-174	Colombian,	negative	Torres
		Peruvian		
<i>CCR5</i>	59029, Δ32	Peruvian	negative	Calzada
	59029, Δ32	Venezuelan	negative	Fernández-Mestre
	-2733, -2554	Colombian	CC	Flórez
<i>CCL2/MCPI</i>	-2518	Brazilian	CC	Ramasawmy
Anti-inflammatory genes				
<i>BAT1</i>	-22, 348	Brazilian	CC	Ramasawmy
<i>IKBL/NFKBIL1</i>	-62, -262	Brazilian	CC	Ramasawmy
<i>IL10</i>	-1082	Brazilian	CC	Costa
	-1082, -819, -592	Colombian	negative	Flórez
<i>PTPN22</i>	1858	Colombian,	negative	Robledo
		Peruvian		
<i>MIF</i>	-173	Colombian,	CC	Torres
		Peruvian		
<i>TGFB</i>	-988, -800, -509, +263	Colombian,	negative	Torres
		Peruvian		
	+10	Colombian,	CC	Torres
		Peruvian		
<i>CTLA4</i>	+49	Venezuelan	negative	Fernández-Mestre
<i>IL4</i>	-590	Colombian	negative	Flórez
<i>IL4RA</i>	+148	Colombian	CC	Flórez
	1124, 1218, 1902	Colombian	negative	Flórez

Table 1. Polymorphisms of immune response genes studied in Chagas Disease

6.4 Host-parasite interaction, changes in gene expression by the infectious process

The infection process involves changes in host cell gene expression caused by the parasite. Therefore, transcriptional profiling is frequently used as a genome-wide tool to screen for the impact of pathogens on host cell functions (Costales et al., 2009). This approach that analyzes the differential expression to identify genes or proteins related with the pathogenesis is widely used in different pathologies. Taking advantages of microarray expression platform comparisons are made between healthy and sick individuals or between strains of susceptible or resistant animal models or between infected and uninfected cells. Currently, two approaches have been integrated so that data from microarrays can be analyzed in the context of the Quantitative Trait Loci (QTLs), a strategy called genetic genomics (Jansen & Nap 2001; Nica et al., 2010). Genetics Genomics is a powerful tool to elucidate the basis of complex traits and disease susceptibility that integrates genotype and phenotype information (Pérez-Enciso et al., 2007).

In CD studies using different cell lines infected with *T. cruzi* or tissues from diseased individuals compared to healthy tissue have been realized. This allowed to identify an increased number of over-expressed genes associated with immune response, such as growth factors, immunoglobulins, cytokines and genes related with cell membrane, lipid metabolism and oxidative phosphorylation (Graefe et al., 2006; Mukherjee et al., 2003; Mukherjee et al., 2006). More recently in several human cell lines was observed overexpression of cytokines with higher overexpression of interferon-stimulated genes and also independent genes of cytokines (Costales, 2009). An analysis of gene expression in heart tissue of five patients with CC and seven with dilated cardiomyopathy suggests that genes of immune response, lipid metabolism and mitochondrial oxidative phosphorylation could be involved in the development of heart failure (Cunha-Neto, 2005). In mice models, myocarditis was associated with immune-inflammatory responses (chemokines, adhesion molecules, cathepsins, and MHC molecules), and fibrosis was associated with extracellular matrix components, lysyl oxidase, and tissue inhibitor of metalloproteinase (Soares et al., 2010). With this approach, our group performed a study for determining differential expression patterns in T lymphocytes of individuals with or without CC. Using the Gen Ontology (GO) tool we could establish the biological pathways associated with over-expression in immune response genes, cell signaling and structure of cardiac tissue. Therefore, genetic genomic strategy could allow establish and identify the risk genotype and phenotype of the patient. In addition would make it possible to identify gene interaction networks responsible for the development of CD.

7. Perspectives

For the control of CD should be used not only the traditional approaches of public health with campaigns to eradicate the domiciled vector, control of transmission in blood banks, and now oral transmission, but implement and promote the use of new developments in genomics, proteomics and pharmacogenomics. The association studies and genetic genomic can provide information to identify genes related with disease development and so develop not only prevention and control programs but identify potential targets for treatment and vaccine design.

8. References

- Akira, S., & Takeda, K. (2004). Toll-like receptor signalling. *Nat Rev Immunol*, Vol.4, No.7, (July 2004), pp. 499-511, ISSN 1474-1733
- Alarcon de Noya, B.; Diaz-Bello, Z.; Colmenares, C., et al. (2010). Large urban outbreak of orally acquired acute Chagas disease at a school in Caracas, Venezuela. *J Infect Dis*, Vol.201, No.9, (March 2010), pp. 1308-1315, ISSN 1537-6613
- Araujo, F.F.; Gomes, J.A.; Rocha, M.O., et al. (2007). Potential role of CD4+CD25HIGH regulatory T cells in morbidity in Chagas disease. *Front Biosci*, Vol.12, (May 2007), pp. 2797-2806, ISSN 1093-4715
- Aufderheide, A.C.; Salo, W.; Madden, M., et al. (2004). A 9,000-year record of Chagas' disease. *Proc Natl Acad Sci U S A*, Vol.101, No.7, (February 2004), pp. 2034-2039, ISSN 0027-8424
- Bafica, A.; Santiago, H.C.; Goldszmid, R., et al. (2006). Cutting edge: TLR9 and TLR2 signaling together account for MyD88-dependent control of parasitemia in *Trypanosoma cruzi* infection. *J Immunol*, Vol.177, No.6, (September 2006), pp. 3515-3519, ISSN 0022-1767
- Barcan, L.; Luna, C.; Clara, L., et al. (2005). Transmission of *T. cruzi* infection via liver transplantation to a nonreactive recipient for Chagas' disease. *Liver Transpl*, Vol.11, No.9, (August 2005), pp. 1112-1116, ISSN 1527-6465
- Beraun, Y.; Nieto, A.; Collado, M.D., et al. (1998). Polymorphisms at tumor necrosis factor (TNF) loci are not associated with Chagas' disease. *Tissue Antigens*, Vol.52, No.1, (August 1998), pp. 81-83, ISSN 0001-2815
- Bern, C., & Montgomery, S.P. (2009). An estimate of the burden of Chagas disease in the United States. *Clin Infect Dis*, Vol.49, No.5, (July 2009), pp. e52-54, ISSN 1537-6591
- Bilate, A.M., & Cunha-Neto, E. (2008). Chagas disease cardiomyopathy: current concepts of an old disease. *Rev Inst Med Trop Sao Paulo*, Vol.50, No.2, (May 2008), pp. 67-74, ISSN 0036-4665
- Brener, Z. (1971). Life cycle of *Trypanosoma cruzi*. *Rev Inst Med Trop Sao Paulo*, Vol.13, No.3, (May 1971), pp. 171-178, ISSN 0036-4665
- Briceno-Leon, R. (2009). Chagas disease in the Americas: an ecohealth perspective. *Cad Saude Publica*, Vol.25 Suppl 1, (March 2009), pp. S71-82, ISSN 1678-4464
- Calzada, J.E.; Beraun, Y.; Gonzalez, C.I., et al. (2009). Transforming growth factor beta 1 (TGFbeta1) gene polymorphisms and Chagas disease susceptibility in Peruvian and Colombian patients. *Cytokine*, Vol.45, No.3, (January 2009), pp. 149-153, ISSN 1096-0023
- Calzada, J.E.; Nieto, A.; Beraun, Y., et al. (2001). Chemokine receptor CCR5 polymorphisms and Chagas' disease cardiomyopathy. *Tissue Antigens*, Vol.58, No.3, (November 2001), pp. 154-158, ISSN 0001-2815
- Campos, M.A.; Almeida, I.C.; Takeuchi, O., et al. (2001). Activation of Toll-like receptor-2 by glycosylphosphatidylinositol anchors from a protozoan parasite. *J Immunol*, Vol.167, No.1, (June 2001), pp. 416-423, ISSN 0022-1767
- Cardon, L.R., & Abecasis, G.R. (2003). Using haplotype blocks to map human complex trait loci. *Trends Genet*, Vol.19, No.3, (March 2003), pp. 135-140, ISSN 0168-9525
- Conrad, D.F.; Jakobsson, M.; Coop, G., et al. (2006). A worldwide survey of haplotype variation and linkage disequilibrium in the human genome. *Nat Genet*, Vol.38, No.11, (October 2006), pp. 1251-1260, ISSN 1061-4036

- Cordova, E.; Boschi, A.; Ambrosioni, J., et al. (2008). Reactivation of Chagas disease with central nervous system involvement in HIV-infected patients in Argentina, 1992-2007. *Int J Infect Dis*, Vol.12, No.6, (March 2008), pp. 587-592, ISSN 1878-3511
- Costa, G.C.; da Costa Rocha, M.O.; Moreira, P.R., et al. (2009). Functional IL-10 gene polymorphism is associated with Chagas disease cardiomyopathy. *J Infect Dis*, Vol.199, No.3, (December 2008), pp. 451-454, ISSN 0022-1899
- Costales, J.A.; Daily, J.P., & Burleigh, B.A. (2009). Cytokine-dependent and-independent gene expression changes and cell cycle block revealed in *Trypanosoma cruzi*-infected host cells by comparative mRNA profiling. *BMC Genomics*, Vol.10, (June 2009), pp. 252, ISSN 1471-2164
- Coura, J.R. (2007). Chagas disease: what is known and what is needed--a background article. *Mem Inst Oswaldo Cruz*, Vol.102 Suppl 1, (December 2007), pp. 113-122, ISSN 0074-0276
- Coura, J.R.; Junqueira, A.C.; Fernandes, O., et al. (2002). Emerging Chagas disease in Amazonian Brazil. *Trends Parasitol*, Vol.18, No.4, (May 2002), pp. 171-176, ISSN 1471-4922
- Cunha-Neto, E.; Duranti, M.; Gruber, A., et al. (1995). Autoimmunity in Chagas disease cardiopathy: biological relevance of a cardiac myosin-specific epitope crossreactive to an immunodominant *Trypanosoma cruzi* antigen. *Proc Natl Acad Sci U S A*, Vol.92, No.8, (April 1995), pp. 3541-3545, ISSN 0027-8424
- Cunha-Neto, E.; Dzaou, V.J.; Allen, P.D., et al. (2005). Cardiac gene expression profiling provides evidence for cytokinopathy as a molecular mechanism in Chagas' disease cardiomyopathy. *Am J Pathol*, Vol.167, No.2, (July 2005), pp. 305-313, ISSN 0002-9440
- Cheung, V.G.; Spielman, R.S.; Ewens, K.G., et al. (2005). Mapping determinants of human gene expression by regional and genome-wide association. *Nature*, Vol.437, No.7063, (October 2005), pp. 1365-1369, ISSN 1476-4687
- D'Avila, D.A.; Guedes, P.M.; Castro, A.M., et al. (2009). Immunological imbalance between IFN-gamma and IL-10 levels in the sera of patients with the cardiac form of Chagas disease. *Mem Inst Oswaldo Cruz*, Vol.104, No.1, (March 2009), pp. 100-105, ISSN 1678-8060
- Daly, M.J.; Rioux, J.D.; Schaffner, S.F., et al. (2001). High-resolution haplotype structure in the human genome. *Nat Genet*, Vol.29, No.2, (October 2001), pp. 229-232, ISSN 1061-4036
- de Bakker, P.I.; Burt, N.P.; Graham, R.R., et al. (2006). Transferability of tag SNPs in genetic association studies in multiple populations. *Nat Genet*, Vol.38, No.11, (October 2006), pp. 1298-1303, ISSN 1061-4036
- Deborggraeve, S.; Coronado, X.; Solari, A., et al. (2009). T. cruzi OligoC-TesT: a simplified and standardized polymerase chain reaction format for diagnosis of Chagas disease. *PLoS Negl Trop Dis*, Vol.3, No.6, (June 2009), pp. e450, ISSN 1935-2735
- Díaz, M.L.; Flórez, O.; Mantilla, J.C.; Ramírez, A.N.; Hernández, L.M. Gualdrón, L.; García, C. & González, C.I. (2009). Brote de Chagas agudo en Santander: casos fatales asociados con probable transmisión oral. *Biomédica*, Vol.29, (Supl1), pp. 210-211, ISSN 0120-4157

- Dias, J.C. (1989). The indeterminate form of human chronic Chagas' disease A clinical epidemiological review. *Rev Soc Bras Med Trop*, Vol.22, No.3, (July 1989), pp. 147-156, ISSN 0037-8682
- Drigo, S.A.; Cunha-Neto, E.; Ianni, B., et al. (2006). TNF gene polymorphisms are associated with reduced survival in severe Chagas' disease cardiomyopathy patients. *Microbes Infect*, Vol.8, No.3, (January 2006), pp. 598-603, ISSN 1286-4579
- Drigo, S.A.; Cunha-Neto, E.; Ianni, B., et al. (2007). Lack of association of tumor necrosis factor-alpha polymorphisms with Chagas disease in Brazilian patients. *Immunol Lett*, Vol.108, No.1, (December 2006), pp. 109-111, ISSN 0165-2478
- Dutra, W.O., & Gollob, K.J. (2008). Current concepts in immunoregulation and pathology of human Chagas disease. *Curr Opin Infect Dis*, Vol.21, No.3, (May 2008), pp. 287-292, ISSN 0951-7375
- Dutra, W.O.; Menezes, C.A.; Villani, F.N., et al. (2009). Cellular and genetic mechanisms involved in the generation of protective and pathogenic immune responses in human Chagas disease. *Mem Inst Oswaldo Cruz*, Vol.104 Suppl 1, (September 2009), pp. 208-218, ISSN 1678-8060
- Feero, W.G.; Guttmacher, A.E., & Collins, F.S. (2010). Genomic medicine--an updated primer. *N Engl J Med*, Vol.362, No.21, (May 2010), pp. 2001-2011, ISSN 1533-4406
- Fernandez-Mestre, M.T.; Layrisse, Z.; Montagnani, S., et al. (1998). Influence of the HLA class II polymorphism in chronic Chagas' disease. *Parasite Immunol*, Vol.20, No.4, (June 1998), pp. 197-203, ISSN 0141-9838
- Fernandez-Mestre, M.T.; Montagnani, S., & Layrisse, Z. (2004). Is the CCR5-59029-G/G genotype a protective factor for cardiomyopathy in Chagas disease? *Hum Immunol*, Vol.65, No.7, (August 2004), pp. 725-728, ISSN 0198-8859
- Fernandez-Mestre, M.; Sanchez, K.; Balbas, O., et al. (2009). Influence of CTLA-4 gene polymorphism in autoimmune and infectious diseases. *Hum Immunol*, Vol.70, No.7, (April 2009), pp. 532-535, ISSN 1879-1166
- Ferreira, R.C.; Ianni, B.M.; Abel, L.C., et al. (2003). Increased plasma levels of tumor necrosis factor-alpha in asymptomatic/"indeterminate" and Chagas disease cardiomyopathy patients. *Mem Inst Oswaldo Cruz*, Vol.98, No.3, (July 2003), pp. 407-411, ISSN 0074-0276
- Florez, O.; Zafra, G.; Morillo, C., et al. (2006). Interleukin-1 gene cluster polymorphism in chagas disease in a Colombian case-control study. *Hum Immunol*, Vol.67, No.9, (September 2006), pp. 741-748, ISSN 0198-8859
- Florez, O.; Martin, J., & Gonzalez, C.I. (2011). Interleukin 4, interleukin 4 receptor-alpha and interleukin 10 gene polymorphisms in Chagas disease. *Parasite Immunol*, Vol. (July 2011), pp. 1-6, ISSN 1365-3024
- Frazer, K.A.; Murray, S.S.; Schork, N.J., et al. (2009). Human genetic variation and its contribution to complex traits. *Nat Rev Genet*, Vol.10, No.4, (March 2009), pp. 241-251, ISSN 1471-0064
- Galvan, A.; Falvella, F.S.; Frullanti, E., et al. (2010). Genome-wide association study in discordant sibships identifies multiple inherited susceptibility alleles linked to lung cancer. *Carcinogenesis*, Vol.31, No.3, (December 2009), pp. 462-465, ISSN 1460-2180
- Gascon, J.; Bern, C., & Pinazo, M.J. (2010). Chagas disease in Spain, the United States and other non-endemic countries. *Acta Trop*, Vol.115, No.1-2, (August 2009), pp. 22-27, ISSN 1873-6254

- Gomes, J.A.; Bahia-Oliveira, L.M.; Rocha, M.O., et al. (2005). Type 1 chemokine receptor expression in Chagas' disease correlates with morbidity in cardiac patients. *Infect Immun*, Vol.73, No.12, (November 2005), pp. 7960-7966, ISSN 0019-9567
- Gomes, M.L.; Galvao, L.M.; Macedo, A.M., et al. (1999). Chagas' disease diagnosis: comparative analysis of parasitologic, molecular, and serologic methods. *Am J Trop Med Hyg*, Vol.60, No.2, (March 1999), pp. 205-210, ISSN 0002-9637
- Gomes, Y.M.; Lorena, V.M., & Luquetti, A.O. (2009). Diagnosis of Chagas disease: what has been achieved? What remains to be done with regard to diagnosis and follow up studies? *Mem Inst Oswaldo Cruz*, Vol.104 Suppl 1, (September 2009), pp. 115-121, ISSN 1678-8060
- Gonzalez, C.I.; Ortiz, S., & Solari, A. (2010). Colombian *Trypanosoma cruzi* major genotypes circulating in patients: minicircle homologies by cross-hybridization analysis. *Int J Parasitol*, Vol.40, No.14, (August 2010), pp. 1685-1692, ISSN 1879-0135
- Gonzalez, E.; Bamshad, M.; Sato, N., et al. (1999). Race-specific HIV-1 disease-modifying effects associated with CCR5 haplotypes. *Proc Natl Acad Sci U S A*, Vol.96, No.21, (October 1999), pp. 12004-12009, ISSN 0027-8424
- Graefe, S.E.; Meyer, B.S.; Muller-Myhsok, B., et al. (2003). Murine susceptibility to Chagas' disease maps to chromosomes 5 and 17. *Genes Immun*, Vol.4, No.5, (July 2003), pp. 321-325, ISSN 1466-4879
- Graefe, S.E.; Streichert, T.; Budde, B.S., et al. (2006). Genes from Chagas susceptibility loci that are differentially expressed in *T. cruzi*-resistant mice are candidates accounting for impaired immunity. *PLoS One*, Vol.1, (December 2006), pp. e57, 1932-6203
- Guedes, P.M.; Veloso, V.M.; Talvani, A., et al. (2010). Increased type 1 chemokine expression in experimental Chagas disease correlates with cardiac pathology in beagle dogs. *Vet Immunol Immunopathol*, Vol.138, No.1-2, (July 2010), pp. 106-113, ISSN 1873-2534
- Guhl, F. (2007). Chagas disease in Andean countries. *Mem. Inst. Oswaldo Cruz*, Vol.102 Suppl 1, (September 2007), pp. 29-38, ISSN 0074-0276
- Guhl, F.; Jaramillo, C.; Vallejo, G.A., et al. (1999). Isolation of *Trypanosoma cruzi* DNA in 4,000-year-old mummified human tissue from northern Chile. *Am J Phys Anthropol*, Vol.108, No.4, (May 1999) pp. 401-407, ISSN 0002-9483
- Hernandez, P.; Heimann, M.; Riera, C., et al. (2010). Highly effective serodiagnosis for Chagas' disease. *Clin Vaccine Immunol*, Vol.17, No.10, (July 2010), pp. 1598-1604, ISSN 1556-679X
- Higo, H.; Miura, S.; Horio, M., et al. (2004). Genotypic variation among lineages of *Trypanosoma cruzi* and its geographic aspects. *Parasitol Int*, Vol.53, No.4, (July 2004), pp. 337-344, ISSN 1383-5769
- Higuchi Mde, L.; Benvenuti, L.A.; Martins Reis, M., et al. (2003). Pathophysiology of the heart in Chagas' disease: current status and new developments. *Cardiovasc Res*, Vol.60, No.1, (October 2003), pp. 96-107, ISSN 0008-6363
- Jankovic, D.; Sher, A., & Yap, G. (2001). Th1/Th2 effector choice in parasitic infection: decision making by committee. *Curr Opin Immunol*, Vol.13, No.4, (August 2001), pp. 403-409, ISSN 0952-7915
- Jansen, R.C., & Nap, J.P. (2001). Genetical genomics: the added value from segregation. *Trends Genet*, Vol.17, No.7, (June 2001), pp. 388-391, ISSN 0168-9525
- Kayama, H., & Takeda, K. (2010). The innate immune response to *Trypanosoma cruzi* infection. *Microbes Infect*, Vol.12, No.7, (March 2010), pp. 511-517, ISSN 1769-714X

- Klein, R.J.; Zeiss, C.; Chew, E.Y., et al. (2005). Complement factor H polymorphism in age-related macular degeneration. *Science*, Vol.308, No.5720, (March 2005), pp. 385-389, ISSN 1095-9203
- Ku, C.S.; Loy, E.Y.; Pawitan, Y., et al. (2010). The pursuit of genome-wide association studies: where are we now? *J Hum Genet*, Vol.55, No.4, (March 2010), pp. 195-206, ISSN 1435-232X
- Layrisse, Z.; Fernandez, M.T.; Montagnani, S., et al. (2000). HLA-C(*)03 is a risk factor for cardiomyopathy in Chagas disease. *Hum Immunol*, Vol.61, No.9, (September 2000), pp. 925-929, ISSN 0198-8859
- Llop, E.; Rothhammer, F.; Acuna, M., et al. (1991). HLA antigens in Chagas cardiomyopathy: new evidence based on a case-control study. *Rev Med Chil*, Vol.119, No.6, (June 1991), pp. 633-636, ISSN 0034-9887
- Machado, F.S.; Koyama, N.S.; Carregaro, V., et al. (2005). CCR5 plays a critical role in the development of myocarditis and host protection in mice infected with *Trypanosoma cruzi*. *J Infect Dis*, Vol.191, No.4, (January 2005), pp. 627-636, ISSN 0022-1899
- Manolio, T.A. (2010). Genomewide association studies and assessment of the risk of disease. *N Engl J Med*, Vol.363, No.2, (July 2010), pp. 166-176, ISSN 1533-4406
- Manque, P.A.; Probst, C.; Pereira, M.C., et al. (2011). *Trypanosoma cruzi* infection induces a global host cell response in cardiomyocytes. *Infect Immun*, Vol.79, No.5, (February 2011), pp. 1855-1862, ISSN 1098-5522
- Mantilla, J.C.; Zafra, G.A.; Macedo, A.M., et al. (2010). Mixed infection of *Trypanosoma cruzi* I and II in a Colombian cardiomyopathic patient. *Hum Pathol*, Vol.41, No.4, (February 2010), pp. 610-613, ISSN 1532-8392
- Marcon, G.E.; Andrade, P.D.; de Albuquerque, D.M., et al. (2002). Use of a nested polymerase chain reaction (N-PCR) to detect *Trypanosoma cruzi* in blood samples from chronic chagasic patients and patients with doubtful serologies. *Diagn Microbiol Infect Dis*, Vol.43, No.1, (June 2002), pp. 39-43, ISSN 0732-8893
- Marino, A.P.; da Silva, A.; dos Santos, P., et al. (2004). Regulated on activation, normal T cell expressed and secreted (RANTES) antagonist (Met-RANTES) controls the early phase of *Trypanosoma cruzi*-elicited myocarditis. *Circulation*, Vol.110, No.11, (September 2004), pp. 1443-1449, ISSN 1524-4539
- Marin Neto, J.A.; Simoes, M.V., & Sarabanda, A.V. (1999). Chagas' heart disease. *Arq Bras Cardiol*, Vol.72, No.3, (October 1999), pp. 247-280, ISSN 0066-782X
- Moreno, M.; Silva, E.L.; Ramirez, L.E., et al. (2004). Chagas' disease susceptibility/resistance: linkage disequilibrium analysis suggests epistasis between major histocompatibility complex and interleukin-10. *Tissue Antigens*, Vol.64, No.1, (June 2004), pp. 18-24, ISSN 0001-2815
- Mukherjee, S.; Belbin, T.J.; Spray, D.C., et al. (2003). Microarray analysis of changes in gene expression in a murine model of chronic chagasic cardiomyopathy. *Parasitol Res*, Vol.91, No.3, (August 2003), pp. 187-196, ISSN 0932-0113
- Mukherjee, S.; Belbin, T.J.; Spray, D.C., et al. (2006). Microarray technology in the investigation of diseases of myocardium with special reference to infection. *Front Biosci*, Vol.11, (December 2005), pp. 1802-1813, ISSN 1093-4715

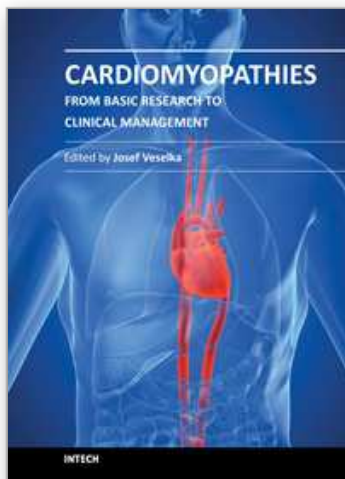
- Mukherjee, S.; Nagajyothi, F.; Mukhopadhyay, A., et al. (2008). Alterations in myocardial gene expression associated with experimental *Trypanosoma cruzi* infection. *Genomics*, Vol.91, No.5, (March 2008), pp. 423-432, ISSN 1089-8646
- Nica, A.C.; Montgomery, S.B.; Dimas, A.S., et al. (2010). Candidate causal regulatory effects by integration of expression QTLs with complex trait genetic associations. *PloS Genet*, Vol.6, No.4, (April 2010), pp. e1000895, ISSN 1553-7404
- Nieto, A.; Beraun, Y.; Collado, M.D., et al. (2000). HLA haplotypes are associated with differential susceptibility to *Trypanosoma cruzi* infection. *Tissue Antigens*, Vol.55, No.3, (April 2000), pp. 195-198, ISSN 0001-2815
- Nobrega, A.A.; Garcia, M.H.; Tatto, E., et al. (2009). Oral transmission of Chagas disease by consumption of acai palm fruit, Brazil. *Emerg Infect Dis*, Vol.15, No.4, (April 2009), pp. 653-655, ISSN 1080-6059
- Organización Panamericana de la Salud. (2006). Estimación cuantitativa de la enfermedad d Chagas en las Americas. Montevideo, Uruguay: OPS.
- Ouaissi, A.; Guilvard, E.; Delneste, Y., et al. (2002). The *Trypanosoma cruzi* Tc52-released protein induces human dendritic cell maturation, signals via Toll-like receptor 2, and confers protection against lethal infection. *J Immunol*, Vol.168, No.12, (June 2002), pp. 6366-6374, ISSN 0022-1767
- Pacheco, A.G., & Moraes, M.O. (2009). Genetic polymorphisms of infectious diseases in case-control studies. *Dis Markers*, Vol.27, No.3, (November 2009), pp. 173-186, ISSN 1875-8630
- Palomino, S.A.; Aiello, V.D., & Higuchi, M.L. (2000). Systematic mapping of hearts from chronic chagasic patients: the association between the occurrence of histopathological lesions and *Trypanosoma cruzi* antigens. *Ann Trop Med Parasitol*, Vol.94, No.6, (November 2000), pp. 571-579, ISSN 0003-4983
- Perez-Enciso, M.; Quevedo, J.R., & Bahamonde, A. (2007). Genetical genomics: use all data. *BMC Genomics*, Vol.8, (March 2007), pp. 69, ISSN 1471-2164
- Piron, M.; Fisa, R.; Casamitjana, N., et al. (2007). Development of a real-time PCR assay for *Trypanosoma cruzi* detection in blood samples. *Acta Trop*, Vol.103, No.3, (July 2007), pp. 195-200, ISSN 0001-706X
- Pissetti, C.W.; Correia, D.; de Oliveira, R.F., et al. (2011). Genetic and functional role of TNF- α in the development *Trypanosoma cruzi* infection. *PloS Negl Trop Dis*, Vol.5, No.3, (March 2011), pp. e976, ISSN 1935-2735
- Praast, G.; Herzogenrath, J.; Bernhardt, S., et al. (2011). Evaluation of the Abbott ARCHITECT Chagas prototype assay. *Diagn Microbiol Infect Dis*, Vol.69, No.1, (December 2010), pp. 74-81, ISSN 1879-0070
- Prata, A. (2001). Clinical and epidemiological aspects of Chagas disease. *Lancet Infect Dis*, Vol.1, No.2, (March 2002), pp. 92-100, ISSN 1473-3099
- Ramasawmy, R.; Cunha-Neto, E.; Fae, K.C., et al. (2009). Heterozygosity for the S180L variant of MAL/TIRAP, a gene expressing an adaptor protein in the Toll-like receptor pathway, is associated with lower risk of developing chronic Chagas cardiomyopathy. *J Infect Dis*, Vol.199, No.12, (May 2009), pp. 1838-1845, ISSN 0022-1899
- Ramasawmy, R.; Fae, K.C.; Cunha-Neto, E., et al. (2008). Variants in the promoter region of IKBL/NFKBIL1 gene may mark susceptibility to the development of chronic

- Chagas' cardiomyopathy among Trypanosoma cruzi-infected individuals. *Mol Immunol*, Vol.45, No.1, (June 2007), pp. 283-288, ISSN 0161-5890
- Ramasawmy, R.; Fae, K.C.; Cunha-Neto, E., et al. (2007). Polymorphisms in the gene for lymphotoxin-alpha predispose to chronic Chagas cardiomyopathy. *J Infect Dis*, Vol.196, No.12, (January 2008), pp. 1836-1843, ISSN 0022-1899
- Ramasawmy, R.; Cunha-Neto, E.; Fae, K.C., et al. (2006). The monocyte chemoattractant protein-1 gene polymorphism is associated with cardiomyopathy in human Chagas disease. *Clin Infect Dis*, Vol.43, No.3, (June 2006), pp. 305-311, ISSN 1537-6591
- Ramasawmy, R.; Cunha-Neto, E.; Fae, K.C., et al. (2006). BAT1, a putative anti-inflammatory gene, is associated with chronic Chagas cardiomyopathy. *J Infect Dis*, Vol.193, No.10, (April 2006), pp. 1394-1399, ISSN 0022-1899
- Rassi, A., Jr.; Rassi, A., & Marin-Neto, J.A. (2010). Chagas disease. *Lancet*, Vol.375, No.9723, (April 2010), pp. 1388-1402, ISSN 1474-547X
- Rassi, A., Jr.; Rassi, S.G., & Rassi, A. (2001). Sudden death in Chagas' disease. *Arq Bras Cardiol*, Vol.76, No.1, (February 2001), pp. 75-96, ISSN 0066-782X
- Robledo, G.; Gonzalez, C.I.; Morillo, C., et al. (2007). Association study of PTPN22 C1858T polymorphism in Trypanosoma cruzi infection. *Tissue Antigens*, Vol.69, No.3, (May 2007), pp. 261-264, ISSN 0001-2815
- Rodriguez-Perez, J.M.; Cruz-Robles, D.; Hernandez-Pacheco, G., et al. (2005). Tumor necrosis factor-alpha promoter polymorphism in Mexican patients with Chagas' disease. *Immunol Lett*, Vol.98, No.1, (March 2005), pp. 97-102, ISSN 0165-2478
- Salazar Schettino, P.M.; Bucio Torres, M.; Cabrera Bravo, M., et al. (2011). Chagas disease in Mexico. Report of two acute cases. *Gac Med Mex*, Vol.147, No.1, (March 2011), pp. 63-69, ISSN 0016-3813
- Samuel, J.; Oliveira, M.; Correa De Araujo, R.R., et al. (1983). Cardiac thrombosis and thromboembolism in chronic Chagas' heart disease. *Am J Cardiol*, Vol.52, No.1, (July 1983), pp. 147-151, ISSN 0002-9149
- Schmunis, G.A. (1999). Prevention of transfusional Trypanosoma cruzi infection in Latin America. *Mem Inst Oswaldo Cruz*, Vol.94 Suppl 1, (June 2000), pp. 93-101, ISSN 0074-0276
- Schmunis, G.A., & Yadon, Z.E. (2010). Chagas disease: a Latin American health problem becoming a world health problem. *Acta Trop*, Vol.115, No.1-2, (November 2009), pp. 14-21, ISSN 1873-6254
- Schofield, C.J. (1981). Chagas disease, triatomine bugs, and bloodloss. *Lancet*, Vol.1, No.8233, (June 1981), pp. 1316, ISSN 0140-6736
- Soares, M.B.; de Lima, R.S.; Rocha, L.L., et al. (2010). Gene expression changes associated with myocarditis and fibrosis in hearts of mice with chronic chagasic cardiomyopathy. *J Infect Dis*, Vol.202, No.3, (June 2010), pp. 416-426, ISSN 1537-6613
- Steemers, F.J., & Gunderson, K.L. (2007). Whole genome genotyping technologies on the BeadArray platform. *Biotechnol J*, Vol.2, No.1, (January 2007), pp. 41-49, ISSN 1860-7314
- Takle, G.B., & Hudson, L. (1989). Autoimmunity and Chagas' disease. *Curr Top Microbiol Immunol*, Vol.145, (January 1989), pp. 79-92, ISSN 0070-217X

- Talvani, A.; Rocha, M.O.; Barcelos, L.S., et al. (2004a). Elevated concentrations of CCL2 and tumor necrosis factor-alpha in chagasic cardiomyopathy. *Clin Infect Dis*, Vol.38, No.7, (March 2004), pp. 943-950, ISSN 1537-6591
- Talvani, A.; Rocha, M.O.; Ribeiro, A.L., et al. (2004b). Chemokine receptor expression on the surface of peripheral blood mononuclear cells in Chagas disease. *J Infect Dis*, Vol.189, No.2, (January 2004), pp. 214-220, ISSN 0022-1899
- Tarleton, R.L. (2003). Chagas disease: a role for autoimmunity? *Trends Parasitol*, Vol.19, No.10, (October 2003), pp. 447-451, ISSN 1471-4922
- Teixeira, M.M.; da Silva, F.M.; Marcili, A., et al. (2006). Short communication: Trypanosoma cruzi lineage I in endomyocardial biopsy from a north-eastern Brazilian patient at end-stage chronic Chagasic cardiomyopathy. *Trop Med Int Health*, Vol.11, No.3, (March 2006), pp. 294-298, ISSN 1360-2276
- Teixeira, M.M.; Gazzinelli, R.T., & Silva, J.S. (2002). Chemokines, inflammation and Trypanosoma cruzi infection. *Trends Parasitol*, Vol.18, No.6, (May 2002), pp. 262-265, ISSN 1471-4922
- Tibayrenc, M.; Neubauer, K.; Barnabe, C., et al. (1993). Genetic characterization of six parasitic protozoa: parity between random-primer DNA typing and multilocus enzyme electrophoresis. *Proc Natl Acad Sci U S A*, Vol.90, No.4, (February 1993), pp. 1335-1339, ISSN 0027-8424
- Torres, O.A.; Calzada, J.E.; Beraun, Y., et al. (2010a). Lack of association between IL-6-174G/C gene polymorphism and Chagas disease. *Tissue Antigens*, Vol.76, No.2, (March 2010), pp. 131-134, ISSN 1399-0039
- Torres, O.A.; Calzada, J.E.; Beraun, Y., et al. (2010b). Role of the IFNG +874T/A polymorphism in Chagas disease in a Colombian population. *Infect Genet Evol*, Vol.10, No.5, (April 2010), pp. 682-685, ISSN 1567-7257
- Torres, O.A.; Calzada, J.E.; Beraun, Y., et al. (2009). Association of the macrophage migration inhibitory factor -173G/C polymorphism with Chagas disease. *Hum Immunol*, Vol.70, No.7, (April 2009), pp. 543-546, ISSN 1879-1166
- Torrico, F.; Alonso-Vega, C.; Suarez, E., et al. (2004). Maternal Trypanosoma cruzi infection, pregnancy outcome, morbidity, and mortality of congenitally infected and non-infected newborns in Bolivia. *Am J Trop Med Hyg*, Vol.70, No.2, (March 2004), pp. 201-209, ISSN 0002-9637
- Tyler, K.M., & Engman, D.M. (2001). The life cycle of Trypanosoma cruzi revisited. *Int J Parasitol*, Vol.31, No.5-6, (May 2001), pp. 472-481, ISSN 0020-7519
- Umezawa, E.S.; Luquetti, A.O.; Levitus, G., et al. (2004). Serodiagnosis of chronic and acute Chagas' disease with Trypanosoma cruzi recombinant proteins: results of a collaborative study in six Latin American countries. *J Clin Microbiol*, Vol.42, No.1, (January 2004), pp. 449-452, ISSN 0095-1137
- Umezawa, E.S.; Nascimento, M.S., & Stolf, A.M. (2001). Enzyme-linked immunosorbent assay with Trypanosoma cruzi excreted-secreted antigens (TESA-ELISA) for serodiagnosis of acute and chronic Chagas' disease. *Diagn Microbiol Infect Dis*, Vol.39, No.3, (May 2001), pp. 169-176, ISSN 0732-8893
- Valente, S.A.; da Costa Valente, V.; das Neves Pinto, A.Y., et al. (2009). Analysis of an acute Chagas disease outbreak in the Brazilian Amazon: human cases, triatomines, reservoir mammals and parasites. *Trans R Soc Trop Med Hyg*, Vol.103, No.3, (January 2009), pp. 291-297, ISSN 1878-3503

- Williams-Blangero, S.; VandeBerg, J.L.; Blangero, J., et al. (2003). Genetic epidemiology of *Trypanosoma cruzi* infection and Chagas' disease. *Front Biosci*, Vol.8, (April 2003), pp. e337-345, ISSN 1093-4715
- World Health Organization Chagas disease (2008) WHO: control and elimination. Report of the Secretariat, executive board EB124/17. 124th Session 27 Provisional agenda item 4.14. November 2008.
- Wrightsmann, R.A.; Krassner, S.M.; Watson, J.D., et al. (1984). Role of the H-2s haplotype in survival of mice after infection with *Trypanosoma cruzi*. *Infect Immun*, Vol.44, No.2, (May 1984), pp. 351-354, ISSN 0019-9567
- Zafra, G.; Mantilla, J.C.; Jacome, J., et al. (2011). Direct analysis of genetic variability in *Trypanosomacruzi* populations from tissues of Colombian chagasic patients. *Hum Pathol*, Vol.42, No.8, (August 2011), pp. 1159-1168, ISSN 1532-8392
- Zafra, G.; Mantilla, J.C.; Valadares, H.M., et al. (2008). Evidence of *Trypanosoma cruzi* II infection in Colombian chagasic patients. *Parasitol Res*, Vol.103, No.3, (June 2008), pp. 731-734, ISSN 0932-0113
- Zafra, G.; Morillo, C.; Martin, J., et al. (2007). Polymorphism in the 3' UTR of the IL12B gene is associated with Chagas' disease cardiomyopathy. *Microbes Infect*, Vol.9, No.9, (July 2007), pp. 1049-1052, ISSN 1286-4579
- Zhang, L., & Tarleton, R.L. (1999). Parasite persistence correlates with disease severity and localization in chronic Chagas' disease. *J Infect Dis*, Vol.180, No.2, (July 1999), pp. 480-486, ISSN 0022-1899
- Zingales, B.; Andrade, S.G.; Briones, M.R., et al. (2009). A new consensus for *Trypanosoma cruzi* intraspecific nomenclature: second revision meeting recommends TcI to TcVI. *Mem Inst Oswaldo Cruz*, Vol.104, No.7, (December 2009), pp. 1051-1054, 1678-8060
- Zingales, B.; Souto, R.P.; Mangia, R.H., et al. (1998). Molecular epidemiology of American trypanosomiasis in Brazil based on dimorphisms of rRNA and mini-exon gene sequences. *Int J Parasitol*, Vol.28, No.1, (March 1998), pp. 105-112, ISSN 0020-7519

IntechOpen



Cardiomyopathies - From Basic Research to Clinical Management

Edited by Prof. Josef Veselka

ISBN 978-953-307-834-2

Hard cover, 800 pages

Publisher InTech

Published online 15, February, 2012

Published in print edition February, 2012

Cardiomyopathy means "heart (cardio) muscle (myo) disease (pathy)". Currently, cardiomyopathies are defined as myocardial disorders in which the heart muscle is structurally and/or functionally abnormal in the absence of a coronary artery disease, hypertension, valvular heart disease or congenital heart disease sufficient to cause the observed myocardial abnormalities. This book provides a comprehensive, state-of-the-art review of the current knowledge of cardiomyopathies. Instead of following the classic interdisciplinary division, the entire cardiovascular system is presented as a functional unity, and the contributors explore pathophysiological mechanisms from different perspectives, including genetics, molecular biology, electrophysiology, invasive and non-invasive cardiology, imaging methods and surgery. In order to provide a balanced medical view, this book was edited by a clinical cardiologist.

How to reference

In order to correctly reference this scholarly work, feel free to copy and paste the following:

Clara Isabel González and Julio César Mantilla (2012). Chagas Heart Disease, *Cardiomyopathies - From Basic Research to Clinical Management*, Prof. Josef Veselka (Ed.), ISBN: 978-953-307-834-2, InTech, Available from: <http://www.intechopen.com/books/cardiomyopathies-from-basic-research-to-clinical-management/chagas-heart-disease>

INTECH
open science | open minds

InTech Europe

University Campus STeP Ri
Slavka Krautzeka 83/A
51000 Rijeka, Croatia
Phone: +385 (51) 770 447
Fax: +385 (51) 686 166
www.intechopen.com

InTech China

Unit 405, Office Block, Hotel Equatorial Shanghai
No.65, Yan An Road (West), Shanghai, 200040, China
中国上海市延安西路65号上海国际贵都大饭店办公楼405单元
Phone: +86-21-62489820
Fax: +86-21-62489821

© 2012 The Author(s). Licensee IntechOpen. This is an open access article distributed under the terms of the [Creative Commons Attribution 3.0 License](https://creativecommons.org/licenses/by/3.0/), which permits unrestricted use, distribution, and reproduction in any medium, provided the original work is properly cited.

IntechOpen

IntechOpen