

We are IntechOpen, the world's leading publisher of Open Access books Built by scientists, for scientists

6,900

Open access books available

185,000

International authors and editors

200M

Downloads

Our authors are among the

154

Countries delivered to

TOP 1%

most cited scientists

12.2%

Contributors from top 500 universities



WEB OF SCIENCE™

Selection of our books indexed in the Book Citation Index
in Web of Science™ Core Collection (BKCI)

Interested in publishing with us?
Contact book.department@intechopen.com

Numbers displayed above are based on latest data collected.
For more information visit www.intechopen.com



The Role of Foods in *Salmonella* Infections

Carlos Alberto Gómez-Aldapa¹, Ma. del Refugio Torres-Vitela²,
 Angélica Villarruel-López² and Javier Castro-Rosas^{1*}

¹Center of Chemical Research, Institute of Basic Sciences and Engineering
 Autonomous University of Hidalgo State, City of Knowledge
 Carretera Pachuca-Tulancingo, Mineral de la Reforma, Hidalgo

²Laboratory of Food Safety, University Center of Exact Sciences and Engineering
 University of Guadalajara, Marcelino García Barragán, Guadalajara, Jalisco
 México

1. Introduction

Salmonella is one of the most common causes of foodborne disease worldwide. It also generates negative economic impacts due to surveillance investigation, and illness treatment and prevention. Salmonellosis is a zoonotic infection caused by *Salmonella*; for example, *S. Enterica* causes gastroenteritis, typhoid fever and bacteremia. Transmission is by the fecal-oral route whereby the intestinal contents of an infected animal are ingested with food or water. Human carriers are generally less important than animals in transmission of *Salmonella* strains. A period of temperature abuse which allows the *Salmonella* spp. to grow in food and/or inadequate or absent final heat treatment are common factors contributing to outbreaks. Meat, poultry, egg, dairy products, and fruits and vegetables are primary transmission vehicles; they may be undercooked, allowing the *Salmonella* strains to survive, or they may cross-contaminate other foods consumed without further cooking. Cross-contamination can occur through direct contact or indirectly via contaminated kitchen equipment and utensils. This chapter is a review of the role foods play in *Salmonella* infections and provides an overview of the main food chain-associated *Salmonella* risks.

2. *Salmonella* contamination sources in foods

Salmonella is found in the environment and the gastrointestinal tract of wild and farmed animals. Animals may become infected with *Salmonella* through environmental contamination, other animals or contaminated feed. Both animals and humans can function as *Salmonella* reservoirs. In addition to sheep, goats, cattle, chickens and pigs, other animals which can become infected with *Salmonella* include geese and other birds, lizards and other reptiles, shellfish, and amphibians such as turtles. Indeed, most *Salmonella* contamination is of animal origin.

Among livestock production systems, *Salmonella* is more frequently isolated from poultry (chicken, turkey, duck, and pheasants) than from other animals (Freitas et al., 2010).

* Corresponding Author

Salmonella-infected animals shed the microorganism in the feces from where it can spread into soil, water, crops and/or other animals. All *Salmonella* serotypes can be harbored in the gastrointestinal tract of livestock. The most common chain of events leading to this foodborne illness involves healthy carrier animals which subsequently transfer the pathogen to humans during production, handling and/or consumption.

Salmonella transmission to food processing plants and food production equipment is a serious public health issue. *Salmonella* can enter the food chain at any point: crop, farm, livestock feed, food manufacturing, processing and retailing (Wong et al., 2002). A number of workers handle animals during slaughter and processing, and contamination is possible when *Salmonella* or any other pathogen is present on the equipment or the workers' hands or clothing. Contamination most often occurs during specific slaughter stages: bleeding, skinning (or defeathering in poultry), evisceration (removal of chest and abdomen contents, also known as gutting) and pre-processing carcass handling. Cattle may be asymptotically infected with *Salmonella* and beef can be contaminated during slaughter and processing via gastrointestinal content, and by milk during milking. *Salmonella* Dublin which is highly pathogenic to humans, is strongly associated with cattle (host-adapted). This makes cattle an important target for *Salmonella* control efforts.

Salmonella can frequently be isolated from most species of live poultry, such as broilers, turkeys, ducks and geese. Levels in poultry can vary depending on country, production system and the specific control measures in place. Contamination in poultry products can occur at several stages in the slaughter process, be it feces during evisceration or cross-contamination from contaminated products or surfaces on the production line. Particular contamination 'hot spots' in the poultry slaughter process include defeathering, evisceration and cutting; chilling in a water bath reduces the *Salmonella* load but may in turn facilitate cross-contamination (Corry et al., 2002; Fluckey et al., 2003; Northcutt et al., 2003).

Pork and pork products are increasingly recognized as important sources of human salmonellosis (Nielsen and Wegener, 1997). *Salmonella* colonizes pigs on the farm, and pork is then contaminated during slaughter or subsequent processing. Control of *Salmonella* in pork can be implemented on the farm, at slaughter and during processing. Pre-harvest control consists of monitoring *Salmonella* at the herd level, and implementing *Salmonella* reduction measures in infected herds through hygiene, animal separation, feeding strategy and strict control of *Salmonella* in the breeder and growing-finishing pig supply chain.

Until recently, most human *Salmonellosis* cases have been caused by contaminated food animals, but in recent years an array of new food vehicles in foodborne disease transmission has been identified. Foods previously thought to be safe are now considered to be hazardous. These new food vehicles share several features. Contamination typically occurs early in the production process, rather than just before consumption. Consumer preferences and the globalized food market result in ingredients from many countries being combined in a single product, making it difficult to trace the specific contamination source. Many foods also have fewer barriers to microbial growth, such as added salt, sugar or preservatives. Their consequent short shelf life means they are often eaten or discarded by the time an outbreak is recognized. Under these circumstances, efforts to prevent contamination at the source are very important. Fresh produce such as fruits and vegetables have gained attention as transmission vehicles since contamination can occur at any one of the multiple steps in the processing chain (Bouchrif et al., 2009). Factors influencing the rise in salmonellosis outbreaks linked to vegetables include changes in agricultural practices and eating habits, as well as greater worldwide commerce in fresh produce (Collins, 1997).

Contamination with *Salmonella* strains from fresh produce apparently stems mainly from horticultural products. The principal contamination routes are probably use of animal-source organic fertilizers, irrigation with wastewater, humans and other animals (Islam et al., 2004; Natvig et al., 2002). Presence of *Salmonella* in the environment may also lead to contamination in fruits and vegetables because *Salmonella* can survive for long periods in the environment. Multiple pathogenic microorganism sources occur during food packaging, distribution and marketing.

Studies of environmental sources of *Salmonella* contamination indicate that water is an important source, particularly irrigation water containing manure, wildlife feces or sewage effluents (Islam et al., 2004; Reilly et al., 1981). Insects or birds may also transmit *Salmonella* to different foods. Flies are a known *Salmonella* carrier (Greenberg & Klowden, 1972), and can transmit various pathogenic microorganisms, as well as viruses such as polioviruses, coxsackie viruses, infectious hepatitis and anthrax (Ugbogu et al., 2006). Moore *et al.* (2003) mentioned the possibility that *Chironomus* genus insects were direct or indirect vectors of enteric bacteria contamination in water and food.

In general, non-typhoid *Salmonella* is a persistent contamination hazard in all raw foods, including animals, poultry, wild birds, eggs, fruit, vegetables, dairy products, fish and shellfish and cereals.

3. *Salmonella* in foods

Salmonella spp. are the most common pathogenic bacteria associated with a variety of foods. Although myriad foods can serve as *Salmonella* sources, meat and meat products, poultry and poultry products, and dairy products are significant sources of foodborne pathogen infections in humans. Presence of *Salmonella* spp. in fresh raw products can vary widely (Harris et al., 2003). Frequency usually ranges from 1 to 10 %, depending on a range of factors including organism, farming and/or food production practices, and geographical factors (Harris et al., 2003). Research on *Salmonella* frequency in different countries is extensive, and *Salmonella* serotypes have been isolated in a variety of foods (Table 1). Poultry and egg products have long been recognized as an important *Salmonella* source (Skov et al., 1999); in fact, contaminated poultry, eggs and dairy products are probably the most common cause of human Salmonellosis worldwide (Herikstad et al., 2002). *Salmonella* can contaminate eggs on the shell or internally, and egg shells are much more frequently contaminated than the white/yolk. Furthermore, egg surface contamination is associated with many different serotypes, while infection of the white/yolk is primarily associated with *S. Enteritidis* (Table 1).

Poultry and poultry products are a common foodborne illness vector. Poultry can carry some *Salmonella* serovars without any outwards signs or symptoms of disease. *Salmonella* can be introduced to a flock via multiple environmental sources, such as feed, water, rodents or contact with other poultry. The gastrointestinal tract of one or more birds may harbor *Salmonella*-and, if damaged during slaughter, may contaminate other carcasses. Cross-contamination can also occur from a *Salmonella*-positive flock or contaminated slaughter equipment to the carcasses of a *Salmonella*-free flock, as well as via handling of raw poultry during food preparation. Sufficient heating will eliminate *Salmonella* from contaminated poultry and poultry products.

Pasteurization effectively kills *Salmonella* in milk, but consumption of unpasteurized milk and milk products is a well documented risk factor for salmonellosis in humans.

Inadequately pasteurized milk as well as post-pasteurization contamination of milk and milk products are recognized sources of human disease.

Country	Food	Serotypes	Reference
United States	Papaya	Agona	CDC, 2011
United States	Cantaloupe	Panama	CDC, 2011
United States	Raw milk	Anatum, Cerro, Dublin, Infantis, Kentucky, Mbdanka, Montevideo, Muenster	Van Kessel et al., 2011
United States	Oysters served raw in restaurants	Newport, Mbandaka, Braenderup, Cerro, Muenchen, I:4,12:i:-	Brillhart & Joens, 2011
Mexico	Chili peppers	ND	Castro-Rosas et al., 2011
Mexico	Cheese	Amsterdam, Anatum, Montevideo, Brandenburg, Give, Kiambu, Nyborg, Bredeney, Typhimurium, Meleagridis, Kentucky	Torres-Vitela et al., 2011
China	Beef	Enteritidis, Typhimurium	Yang et al., 2010
Iran	Chicken	Thompson	Dallal et al., 2010
Brazil	Poultry carcass	Enteritidis	Freitas et al., 2010
Turkey	Retail Meat Products	Typhimurium, <i>S. bongori</i> , <i>S. enterica</i> subsp. <i>diarizonae</i>	Arslan & Eyi, 2010
Uruguay	Poultry and Eggs	Enteritidis, Derby, Gallinarum, Panama	Betancor et al., 2010
Mexico	Zucchini squash	ND	Castro-Rosas et al., 2010
Bangladesh	Chick egg	Typhimurium	Hasan et al., 2009
Senegal	Chicken Carcasses and Street-Vended Restaurants	Brancaster, Goelzau, Kentucky, Hadar, Agona, Poona, Bandia, Bessi, Brunei, Hull, Istanbul, Javiana, Magherafelt, Molade, Oxford, Rubislaw, Tamale, and Zanzibar	Dione et al., 2009
United States	Chicken carcasses from retail stores	Kentucky, Hadar, Enteritidis, Braenderup, Montevideo, Thompson, Mbandaka, Agona	Lestari et al., 2009

Country	Food	Serotypes	Reference
United States	Broiler carcasses	Kentucky, Heidelberg, Typhimurium, Typhimurium var. 5-; 4,5,12:I: -; Schwarzengrund, Montevideo, Ohio, Kiambu, Betha, Thompson; 4,12:I: -; Senftenberg, Enteritidis, Worthington, Hadar; 8,(20): - :z6; Mbandaka; 8,(20):I: -; Infantis	Berrang et al., 2009
Republic of Ireland	Retail pork	Typhimurium	Prendergast et al., 2009
Mexico	Parsley, coriander, cauliflower, lettuce, spinach	Typhimurium, Choleraesuis, Gallinarum, Anatum , Agona, Edinburg, Enteritidis, Typhi, Pullorum, Bongor	Quiroz-Santiago et al, 2009
Japan	Imported Seafood	Weltevreden	Asai et al., 2008
Iran	Raw poultry	Enteritidis, Baibouknown	Jalali et al., 2008
Mexico	Hydroponic Tomatoes	Typhimurium, Agona, Thompson, Montevideo, C1 monophasic	Orozco et al., 2008
Australia	Retail Raw Meats	Typhimuriuam, Infantis	Phillips et al., 2008
Turkey	Chicken	Infantis	Cetinkaya et al., 2008
Germany	Sushi from sushi bars and retailers	ND	Atanassova et al., 2008
Vietnam	Pork, beef, chicken, Shellfish	London, Havana, Anatum, Hadar, Albany, Typhimurium	Van et al., 2007
Brazil	Poultry meat	ND	Reiter et al., 2007
New Zealand	Uncooked retail meats	Infantis, Typhimurium, Enteritidis, Brandenburg, 4,5,12:-: -, 4,12:-: -, 4:-:2, 6,7:k:-	Wong et al., 2007
Canada	Chicken nuggets and strips	Heidelberg, Orion, Kentucky, Hadar, Indiana, Infantis, Enteritidis, Mbandaka,	Bucher et al., 2007

Country	Food	Serotypes	Reference
Malaysia	Street food, fried chicken, kerabu jantung pisang, sambal fish, mix vegetables	Biafra, Braenderup, Weltevreden	Tunung et al., 2007
United States	Almonds	35 different serotypes	Danyluk et al., 2007

ND: not determined

Table 1. *Salmonella* serotypes identified in different foods and countries.

Salmonella spp. have been isolated from filter feeder seafood species such as oysters, clams and mussels (Table 1). These species acquire their food from the water flowing through their bodies, but also ingest anything else that happens to be in the water. If oceans, lakes and bays are contaminated with fecal matter, the shellfish living in them intake any waterborne pathogens and harbor them in their intestines. The highest potential infection risk is from oysters, since they are most often eaten raw on the half shell. A single raw oyster can contain enough bacteria to cause an infection in the human gut. Mussels and clams pose less of a risk because they are usually steamed, killing *Salmonella* and most other bacteria. The above constitute only a sampling of the principal ways in which animals and animal products cause lead to *Salmonella* infection.

Fresh produce as a possible disease vehicle has become the focus of increasing concern since contamination can occur at multiple steps along the food chain. *Salmonella* is among the most worrisome of the pathogenic microorganisms found in minimally-processed fresh produce (CDC, 2009; Heaton et al., 2008). Bacterial contamination of whole or minimally-processed fresh vegetables can occur at different processing stages (i.e. harvest, trimming, washing, slicing, soaking, dehydrating, blending and/or packaging) (Harris el al., 2003). Produce can also be contaminated with human or animal source pathogens (Beuchat, 2006; Natvig, 2002). *Salmonella* spp. are the most common etiological agent associated with fresh produce related infection in the United States (US). A range of fresh fruit and vegetable products have been implicated in *Salmonella* infection, most frequently lettuce, sprouted seeds, melons and tomatoes (Table 2). *Salmonella* spp. are often isolated during routine surveys of produce such as lettuce, cauliflower, sprouts, mustard cress, endive and spinach (Thunberg et al., 2002); mushrooms (Doran et al., 2005); bean sprouts, alfalfa sprouts, unpasteurized juices and fresh salad fruits and vegetables (CDC, 2009).

In Mexico, *Salmonella* has been isolated from raw vegetables such as alfalfa sprouts (Castro-Rosas and Escartín, 1999), parsley, cilantro, cauliflower, lettuce and spinach (Quiroz-Santiago et al., 2009). It has also been identified from zucchini squash (*Cucurbita pepo*) (Castro-Rosas et al., 2010), and jalapeño and serrano chili peppers (Castro-Rosas et al., 2011). In 2008, 600,000 tons of zucchini were produced in Mexico: 419,768 tons for the domestic market (SAGARPA, 2010) and approximately 200,000 tons for the US market (USDA, 2010). This squash is most commonly consumed cooked in Mexico and other countries, but can be eaten raw (e.g. green salads). In 2009, over 1,981,500 tons of chili peppers were produced in Mexico; of these 613,308 tons were jalapeño peppers and 216,617 tons were serrano peppers (SAGARPA, 2010). These peppers are most commonly consumed raw [e.g. green salads or Mexican sauce (salsa)], both in Mexico and other countries.

We studied the frequencies of coliform bacteria (CB), thermotolerant coliforms (TC), *Escherichia coli* and *Salmonella* in zucchini squash (Castro-Rosas et al., 2010) and jalapeño and serrano peppers (Castro-Rosas et al., 2011). In zucchini squash, infection was detected in 100% of cases for CB, 70% for TC, 62% for *E. coli* and 10% for *Salmonella* spp. Concentration range was 3.8 to 7.4 log CFU/fruit for CB, and <3 to 1000 MPN/fruit for TC and *E. coli*. In serrano chili peppers infection was detected in 100% of cases for CB, 90% for TC, 50% for *E. coli* and 10% for *Salmonella* spp., while in jalapeño peppers frequencies were 100% for CB, 86% for TC, 32% for *E. coli* and 12% for *Salmonella* spp. All *Salmonella*-positive samples were also *E. coli*-positive. For CB, concentration range was 3.8 to 7.9 log CFU/serrano sample and 5.3 to 8.2 log CFU/jalapeño sample, whereas TC and *E. coli* concentrations ranged from <3 to 1100 MPN/serrano and jalapeño samples (Castro-Rosas, et al., 2010; 2011). As is the case with other vegetables consumed raw, zucchini squash, and jalapeño and serrano peppers are potential pathogen vehicles. Sources of pathogenic microorganisms in the field include soil, water, wild and domestic animals, drift and runoff from adjacent farms and manure (Beuchat, 2006; Natvig, 2002). Once harvested and used in food preparation, zucchini squash, jalapeño and serrano peppers are all potential sources of cross contamination with pathogenic microorganisms.

Salmonellosis infection is an increasing problem and recent salmonellosis outbreaks have been associated with a wider variety of vegetables, even those that were not previously considered to imply a risk (e.g. jalapeño peppers; CDC, 2008a). Data on frequency of incidence for pathogenic bacteria such as *Salmonella* are clearly needed for a wide variety of vegetables which are consumed raw. Preventing contamination is vital to avoiding salmonellosis outbreaks, but it is also important to understand the potential survival and growth rates of *Salmonella* on specific substrates such as zucchini, jalapeño and serrano peppers. Our results suggest that both chili peppers and zucchini squash may be significant factors contributing to the endemicity of *Salmonella* in Mexico.

Salmonella has been isolated from fruits and vegetables such as cantaloupes, melons, tomatoes, lettuce, and especially alfalfa sprouts (Table 1). These products can become contaminated by several routes, therefore, consumers need to thoroughly wash all fresh foods before consumption to reduce risk of illness from fruits and vegetables. With alfalfa sprouts and lettuce, washing can merely drive bacteria deeper into the lower layers of lettuce leaves or sprouts, so the outside three layers of lettuce leaves need to be removed and sprouts need to be separated before careful washing.

Finally, consumer awareness needs to be promoted that many other foods may carry *Salmonella*, even those not normally thought to be contamination sources. Most users know to handle raw chicken properly and to cook chicken and eggs thoroughly to avoid *Salmonella* contamination. But foods such as almonds, pecans and chocolate can also harbor *Salmonella*. In addition, as the food chain becomes completely global and highly complex, and international trade continues to develop, new foods will surely be linked to salmonellosis outbreaks.

4. *Salmonella* outbreaks

Disease surveillance reports frequently identify poultry, meat and milk products as the main vehicles in salmonellosis outbreaks. However, in recent years foodborne illness outbreaks have been increasingly associated with greater consumption of fresh fruits and vegetables (CDC, 2009). *Salmonella* is responsible for frequent foodborne illness outbreaks in the

developed world, and *Salmonella* outbreaks have been associated with different *Salmonella* serovars (Table 2). Over 2000 *Salmonella* serotypes are known, but only a small fraction of these are commonly associated with foodborne illness. Which serotypes cause illness is influenced by serotype geographical distribution and serovar or strain pathogenicity. In the US, *Salmonella* Typhimurium has been considered the principal causative agent of foodborne salmonellosis, but both *S. Typhimurium* and *Enteritidis* have been increasingly identified in foodborne salmonellosis since the 1980s (Table 2); the exact cause of the predominance of these *Salmonella* serotypes is not yet clearly understood.

Most developed countries have laboratory-based *Salmonella* infection surveillance programs, and many countries have systems for recording outbreaks and notification systems where clinicians submit data on patients with *Salmonella* infections to national public health institutions. Official *Salmonella* infection numbers are usually derived from laboratory-based surveillance in which clinical microbiology laboratories report positive findings and, in some countries, submit *Salmonella* isolates to national reference laboratories for serotyping and other characterization. These data are necessary for measuring trends over time and detecting outbreaks. However, official figures do not quantify the burden of illness, and degree of surveillance differs between countries. Moreover, reported incidence is a composite measure of several factors, including true *Salmonella* infection incidence, the health-care seeking behavior of patients with gastroenteritis, and the likelihood that the physician requests a stool culture. Furthermore, access to laboratories and microbiological methods varies widely, as does the precision of findings reported to public health authorities. Finally, comparisons between different geographical areas can be difficult because public health jurisdictions with a tradition of active case-searching as part of outbreak investigations or extensive testing of contacts of known patients or food-handlers are likely to report higher numbers of infections than jurisdictions with only passive surveillance. As a result, the precise incidence of *Salmonella* food poisoning in all countries is not known, since small outbreaks often remain unreported.

Salmonella spp. and *S. Typhi* infections are endemic in many developing countries. In Mexico, there were 709,278 salmonellosis cases and 228,206 typhoid fever cases reported from 2004-2009 (Secretaría de Salud, 2011). In addition, *S. Gaminara* and *S. Montevideo* have been associated with several cases of human illness in Mexico (Gutiérrez-Cogco et al., 2000). A certain proportion of salmonellosis and typhoid fever cases in Mexico may be associated with consumption of raw vegetables exposed to fecal contamination, probably due to the continued but limited practice of irrigating vegetable crops with untreated wastewater.

Centers for Disease Control and Prevention (CDC) data for the US indicate that over 40,000 salmonellosis cases occur annually, with about 500 resulting deaths. As is the case for staphylococcal gastroenteritis, the largest salmonellosis outbreaks typically occur at banquets or similar functions. However, the two largest recorded salmonellosis outbreaks occurred under rather unusual circumstances. The largest occurred in 1994 and involved over 224,000 cases in 41 states. The serovar was *S. Enteritidis* and the vehicle food was ice cream produced from milk transported in tanker trucks which had previously hauled liquid eggs. The second largest occurred in 1985 and involved nearly 200,000 cases. *S. Typhimurium* was the etiological agent and the vehicle was 2% milk produced by a single dairy plant in Illinois. The third largest outbreak occurred in 1974 on the Navajo Indian Reservation, when 3,400 persons became ill with the *S. Newport* serovar. Human carriers are generally less important than animals in transmission of salmonellosis. Human

transmission can occur if hands contaminated with infected fecal matter come in contact with food which is then consumed without adequate cooking, often after an intervening period in which microbial growth occurs. Exactly this chain of events led to a major outbreak affecting an international airline in 1984. A total of 631 passengers were infected after eating food containing an aspic glaze prepared by a food service worker who returned to work after a bout of salmonellosis but was still excreting *Salmonella* Enteritidis PT4. The serotype Typhimurium has participated in most recent outbreaks, although it is likely that this serotype's involvement in salmonellosis cases worldwide is far greater than reported. *Salmonella* surveillance sensitivity may vary widely between countries but it is still crucial to identifying trends and detecting outbreaks. Surveillance which includes serotyping is particularly useful for this purpose. Available data suggest that the incidence of *Salmonella* infections has increased over the last twenty years, that new *Salmonella* serotypes often emerge in several countries at near the same time, and that multi-state or international outbreaks call for a coordinated response. In response, several national and international networks currently address the problem of emerging *Salmonella* infections. An important objective in preventing *Salmonella* outbreaks is improvement and enhancement of surveillance, including serotyping.

Country	Food vehicle	Serotypes	Number of cases	Reference
United States	Papaya	Agona	99	CDC, 2011a
United States	Alfalfa sprouts and spicy sprouts	Enteritidis	25	CDC, 2011b
United States	Turkey Burgers	Hadar	12	CDC, 2011c
United States	Cantaloupe	Panama	20	CDC, 2011d
United States	Alfalfa sprouts	I 4,[5],12:i:-	140	CDC, 2011e
Denmark	Salami	Typhimurium	20	Kuhn et al, 2011
England	Sandwiches and prepared salads	Typhimurium	179	Boxall et al., 2011
Australia	Raw egg mayonnaise	Typhimurium	87	Jardine et al, 2011
Ireland, United Kingdom (England, Wales, Northern Ireland, Scotland), France, Luxembourg, Sweden, Finland, Austria	Pre-cooked meat products	Agona	163	Nicolay et al., 2011
South Africa	Food served in a school	Enteritidis	18	Niehaus et al., 2011

Country	Food vehicle	Serotypes	Number of cases	Reference
Japan	Boxed lunches	Braenderup	176	Mizoguchi et al., 2011
England	Multiples foods	Enteritidis	63	Janmohamed et al., 2011
United States	Shell Eggs	Enteritidis	1,939	CDC, 2010a
United States	Cheesy chicken rice frozen entrée	Chester	44	CDC, 2010b
United States	Frozen mamey fruit pulp	Typhi	9	CDC, 2010c
United States	Alfalfa Sprout	Newport	44	CDC, 2010d
United States	Red and Black Pepper/Italian-Style Meats	Montevideo	272	CDC, 2010e
United States	Potato salad	Schwarzengrund, Typhimurium	9	CDC, 2010f
United States	Cilantro and chicken meat	Montevideo	58	Patel et al, 2010
Netherlands	Fresh fruit juice	Panama	33	Noël et al., 2010
France	Dried pork sausage	4,12:i:-	90	Bone et al., 2010
China	Water	S. Paratyphi A	267	Yang et al., 2010
United Kingdom	Raw bean sprouts	Bareilly	231	Cleary et al., 2010
Netherlands	Raw or undercooked beef products	Typhimurium	23	Whelan et al., 2010
Australia	Dessert containing raw egg	Typhimurium	20	Reynolds et al., 2010
New Zealand	Watermelon	Typhimurium	15	McCallum et al., 2010
Spain	Infant formula	Kedougou	42	Rodriguez-Urrego et al., 2010
United States	Alfalfa Sprouts	Saintpaul	228	CDC, 2009a
United States	Peanut butter	Typhimurium	529	CDC, 2009b
United States	Unpasteurized orange juice	Typhimurium and Saintpaul	152	Jain et al., 2009
United States	Vegetable-coated ready-to-eat snack food	Wandsworth, Typhimurium	69	Sotir et al., 2009
Australia	Eggs	Typhimurium	22	Dyda et al., 2009
Australia	Bread dumpling			
Australia	loaf prepared with eggs	Enteritidis	8	Much et al., 2009
Australia	Papaya	Litchfield	26	Gibbs et al., 2009

Country	Food vehicle	Serotypes	Number of cases	Reference
Denmark, Norway and Sweden	Pork meat and pork products	Typhimurium	41	Bruun et al., 2009
Australia	Eggs	Typhimurium	19	Slinko et al., 2009
Mauritius	Marlin mousse	Typhimurium	53	Issack et al., 2009
Pakistan	Drinking water	<i>S. typhi</i>	300	Farooqui et al., 2009
France	Cheese made from raw milk	Montevideo	23	Dominguez et al., 2009
France	Goat's cheese	Muenster	25	Van Cauteren et al., 2009
Denmark	Pasta salad with pesto	Anatum	At least 4	Pakalniskiene et al., 2009
Netherlands	Hard cheese made from raw milk	Typhimurium	224	Van Duynhoven et al., 2009
Australia	Chocolate mousse	Typhimurium	8	Roberts-Witteveen et al., 2009
United States	Jalapeño peppers	Saintpaul	at least 1,442	CDC, 2008a
United States	Frozen Pot Pies	I 4,5,12:i:-*	401	CDC, 2008b
United States	Fruit salad	Litchfield	30	CDC, 2008c
United States	Unpasteurized Mexican-style aged cheese	Newport	85	CDC, 2008d
England and Wales	Fresh basil	Senftenberg	32	Pezzoli et al., 2008
Norway	Rucola lettuce	Thompson	21	Nygård et al., 2008
Bulgaria	Minced meat	Typhimurium	22	Pekova et al., 2008
Switzerland	Soft cheese	Stanley	82	Pastore et al., 2008
Denmark	Pork products	Typhimurium	1,054	Ethelberg et al., 2008
Japan	Snapping turtle	Typhimurium	4	Fukushima et al., 2008
Ireland	Meat products	Agona	119	O'Flanagan et al., 2008

Table 2. Recent reported *Salmonella* outbreaks, including country (ies) affected, food vehicle and serovar.

5. Interaction of *Salmonella* with foods

Salmonella serotypes can grow and survive on a large number of foods (Harris et al., 2003). Their behavior in foods is controlled by a variety of environmental and ecological factors, including water activity, pH, Eh, chemical composition, the presence of natural or added antimicrobial compounds and storage temperature; as well as processing factors such as heat application and physical handling. For example, optimum pH for growth in *Salmonella* is approximately neutral, with values > 9.0 and < 4.0 being bactericidal. Minimum growth in some serotypes can occur at pH 4.05 (with HCl and citric acids), although this minimum can occur at pH as high as 5.5, depending on the acid used to lower pH (Harris, et al., 2003). Growth in *Salmonella* can continue at temperatures as low as 5.3 °C (*S. Heidelberg*) and 6.2 °C (*S. Typhimurium*), and temperatures near 45 °C (temperatures ≥ 45 °C are bactericidal). In addition, available moisture (aw) inhibits growth at values below 0.94 in neutral pH media, although higher aw values are required as pH declines to near the minimum growth values (Harris, et al., 2003).

Extensive data is available on the effects of individual environmental factors on *Salmonella* strains, but the effects of their interactions are not as well understood. Parish et al. (1997) determined survival for several *Salmonella* serotypes in orange juice. To achieve a 6 log reduction in *Salmonella* serotypes, orange juice (pH 3.5) had to be stored at 4 °C for 15-24 days. A similar reduction took 43-57 days when the orange juice was at pH 4.1 and 4 °C. Using apple juice, Uljas & Ingham (1999) demonstrated that *S. Typhimurium* DT104 could be reduced by at least 5 log units at pH 3.3 after storage at 25 °C for 12 hours or at 35 °C for 2 hours. These treatments did not achieve a 5 log reduction in *E. coli* O157. At pH 4.1, a 5 log reduction in *S. Typhimurium* DT104 was produced by storage at 35 °C for 6 hours in the presence of 0.1% sorbic acid or by a combination of storage at elevated temperature (25 °C for 6 hours or 35 °C for 4 hours) followed by a freeze/thaw cycle without sorbic acid (Uljas & Ingham, 1999). In the field, the physical environment of vegetable surfaces is considered to be inhospitable for growth and survival of *Salmonella* (for example, temperature and humidity fluctuations, and ultraviolet light) (Dickinson, 1986). Environmental conditions, however, can greatly influence bacterial populations; the presence of free moisture on vegetable surfaces from precipitation, dew or irrigation can promote survival and growth of bacterial populations (Shaper et al., 2006). Certain conditions such as sunlight, particularly shorter ultraviolet wavelengths, can damage bacterial cells (Shaper et al., 2006); selection therefore occurs for bacteria with adaptations to stressful conditions. Microorganisms' ability to survive on plants depends on the environmental, physicochemical and genetic features of the plant and specific properties (Shaper et al., 2006). Many microorganisms have developed mechanisms to attach to, survive and/or grow in microniches on different vegetables (Shaper et al., 2006). For instance, surface moisture on vegetables may provide a protective environment for *Salmonella* strains. On vegetable surfaces, microorganisms interact in aggregates and may compete for the limited nutrients available in microniches at the junction of epidermal cells, where water accumulates, cuticular waxes are less dense and nutrients are more available than in other sites (Shaper et al., 2006). Free water in the surface apertures of vegetables (e.g. stomata) constitutes a water channel connecting a plant's apoplast with its external environment. Microorganisms can enter vegetables through these water channels in various ways. Once internalized, the microorganisms are protected from environmental stress (Shaper et al., 2006). Survival of pathogenic microorganisms on or in raw produce is

also dictated by its metabolic capabilities. However, the manifestations of these capabilities can be greatly influenced by intrinsic (e.g. vegetable moisture surface) and extrinsic ecological factors naturally present in the raw produce or imposed at one or more points during production, processing and distribution (Harris et al., 2003). *Salmonella* strains may be able to enter a viable but nonculturable state (VBNC) on the surface of fruit and vegetables, resulting in underestimation of viable population size by direct plating on culture medium. Brandl and Mandrell (2002), suggested that *S. Thompson* may enter into a VBNC state on *Cilantro phyllosphere* due to exposure to dry pre-harvest conditions on the plant surface. Improved understanding of microbial ecosystems on the surface of foods such as raw fruits and vegetables would be extremely useful in developing strategies to minimize contamination, prevent pathogen growth, and kill or remove pathogens at different stages in production, processing, marketing and preparation for consumption. Food ecosystems are extremely diverse and complex. *Salmonella* survival and/or growth on foods are influenced by the organism, produce item and environmental conditions in the field and post-harvest, including storage conditions. For many years, the interaction of *Salmonella* with animal hosts and animal-origin foods has received intense attention. In contrast, little research has been done on the interaction between *Salmonella* spp. and fruits and vegetables, and more specifically on its frequency and behavior in fruits and vegetables which may pose a special risk to humans [e.g. radish root (*Raphanus sativus*), beetroot (*Beta vulgaris* var. *conditiva*), jicama (*Pachyrhizus erosus*), loroco (*Fernaldia pandurata*), prickly pear (*Opuntia* spp.), zucchini squash (*Cucurbita pepo*), chili peppers (Jalapeño and Serrano peppers) and others]. It is particularly urgent to study fruits and vegetables not previously considered health hazards and those with the potential to function as pathogen microorganism vehicles but are as yet unidentified.

In a recent *Salmonella* outbreak in the US, jalapeño and serrano peppers were the food vehicle and the isolated serovar was Saintpaul (CDC, 2008). It affected at least 1,442 persons in 43 states, the District of Columbia and Canada, and was traced back to distributors in the United States which had received produce grown and packed in Mexico. The outbreak strain was isolated from samples of jalapeño peppers collected from a US warehouse and a patient's home, as well as from samples of serrano peppers and water collected from a farm in Mexico. We have studied the behavior of *Salmonella* serotypes in zucchini squash and chili peppers. In zucchini, we tested the behavior of four *Salmonella* serotypes (Typhimurium, Typhi, Gaminara and Montevideo) and a cocktail of three *Escherichia coli* strains on whole and sliced zucchini squash at 25 ± 2 and $3-5$ °C. No growth was observed for any of the tested microorganisms or the cocktail on whole fruit stored at 25 ± 2 or $3-5$ °C. After 15 days at 25 ± 2 °C, the tested *Salmonella* serotypes had decreased from an initial inoculum level of 7 log CFU to <1 log and at $3-5$ °C they decreased to approximately 2 log (Figure 1). Among the *E. coli* strains, survival was significantly higher than for the *Salmonella* strains at the same times and temperatures: after 15 days at 25 ± 2 °C, *E. coli* cocktail strains had decreased to 3.4 log CFU/fruit and at $3-5$ °C they decreased to 3.6 log CFU/fruit (Figure 1). The observed differences in survival between the *Salmonella* and *E. coli* strains on zucchini squash fruit could be due to factors such as the area inoculated, fruit ripeness and physical and chemical characteristics of the studied fruit and strains. Different strains of *E. coli* O157:H7, *Pseudomonas*, *Salmonella*, and *Listeria monocytogenes* attach to different regions of cut lettuce leaves, indicating different and specific attachment mechanisms among different species or strains (Takeuchi et al., 2000).

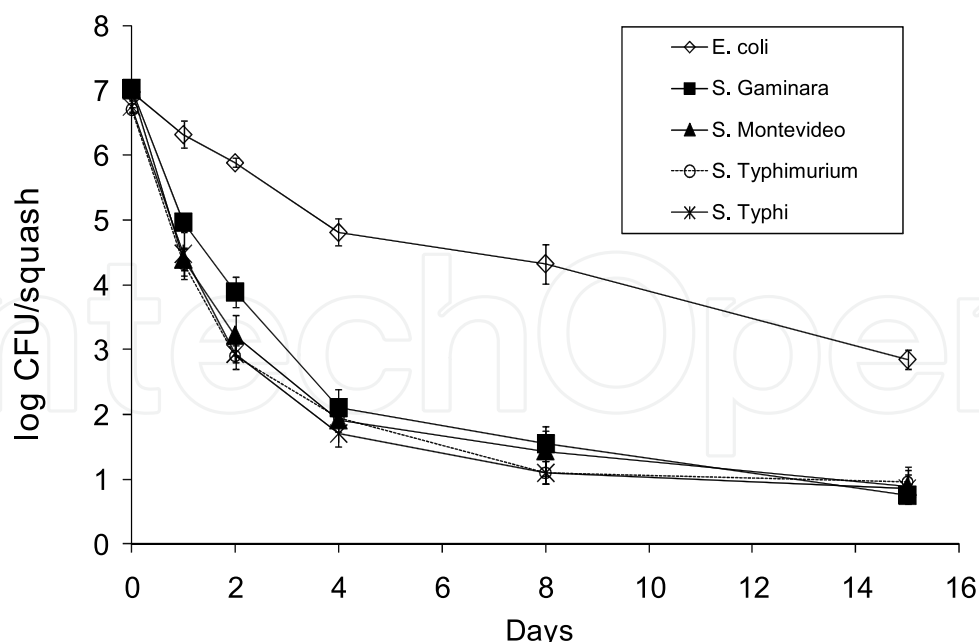


Fig. 1. Behavior of 4 *Salmonella* serotypes and *E. coli* on zucchini squash at 25 ± 2 °C (Castro-Rosas et al., 2010).

When inoculated onto zucchini squash slices and incubated at 25 ± 2 °C, the studied *Salmonella* and *E. coli* strains grew (Figure 2). After a short lag period (approx. 4 h), the *Salmonella* and *E. coli* populations increased from 2 log to 6 log CFU/slice at 24 h, and the *E. coli* strains increased a further 1 log CFU by 72 h. Initial *Salmonella* and *E. coli* inocula levels were close to that of Aerobic Plate Count bacteria (APC) in the studied zucchini squash fruit (approx. 2.5 log CFU/slice), and the APC growth rate (7.6 log CFU/slice by 24 h; 8.9 log CFU/slice by 72 h) was comparable to the studied strains (Figure 2). The behavior of *Salmonella* under these conditions does not differ greatly from that of *Salmonella* strains in other foods. For instance, *S. Typhimurium* inoculated in shredded cooked beef and stored at 20 °C/8 h, increased from 2.3 to 3.4 log CFU/g (16), while after 22 h incubation on sliced tomatoes *S. Montevideo* increased by ca. 1.5 log CFU/g at 20 °C and 2.5 log CFU/g at 30 °C (Zhuang et al. 1995).

Under refrigeration (3-5 °C), growth in the *Salmonella* serotypes and *E. coli* strains was inhibited (Figure 4): bacterial concentration at 5 days was essentially similar to initial inocula levels. Nonetheless, survival of even a small concentration of *E. coli* and/or *Salmonella* under refrigeration poses a serious health hazard to consumers since salmonellosis outbreaks have been reported as originating in different foods at low pathogen concentrations (Greenwood and Hopper, 1983).

In a separate study, we tested the growth behavior of the same four *Salmonella* serotypes and three *E. coli* strains at the same temperatures (25 ± 2 and 3-5 °C) on whole and sliced jalapeño and serrano peppers, as well as in a blended chili pepper sauce (Castro-Rosas et al., 2011). The sauce was an aqueous suspension containing mixed peppers, tomatoes, coriander, onion and salt (NaCl) in specific proportions. Both types of microorganisms exhibited similar behavior on/in the serrano and jalapeño peppers. No growth was observed in rifampicin-resistant *Salmonella* and *E. coli* strains on the surface of whole serrano and jalapeño peppers stored at 25 ± 2 or 3-5 °C. After 6 days at 25 ± 2 °C, the tested *Salmonella* serotypes and *E. coli* had decreased from an initial inoculum level of 5 log CFU to 1 log on the serrano peppers and to 2.5 log on the jalapeño peppers (Figure 3). At 3-5 °C they decreased to approximately 1.8 log in

the serrano peppers and to 1.2 log on the jalapeño peppers. In contrast, when inoculated onto slices of both peppers and into the blended sauce, the *Salmonella* serotypes and *E. coli* grew: after 24 h at 25±2 °C, both bacteria types had grown to approximately 4 log CFU on the slices and 5 log CFU in the sauce (Figures 4-5). Bacterial growth was inhibited at 3-5 °C. In summary, the four tested *Salmonella* serotypes can survive on whole or sliced zucchini squash, serrano and jalapeño peppers and in sauce made of raw chili peppers, indicating them to be effective transmission vehicles and potential public health threats.

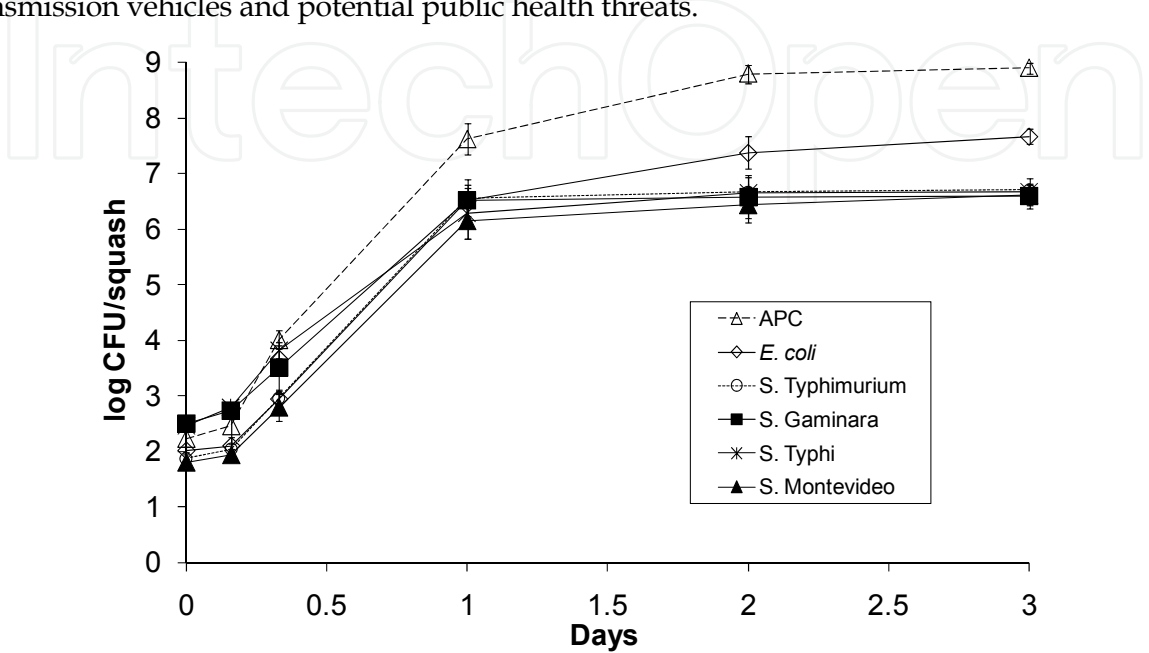


Fig. 2. Behavior of 4 *Salmonella* serotypes, *E. coli* and Aerobic Plate Count on zucchini slices at 25±2 °C (Castro-Rosas et al., 2010).

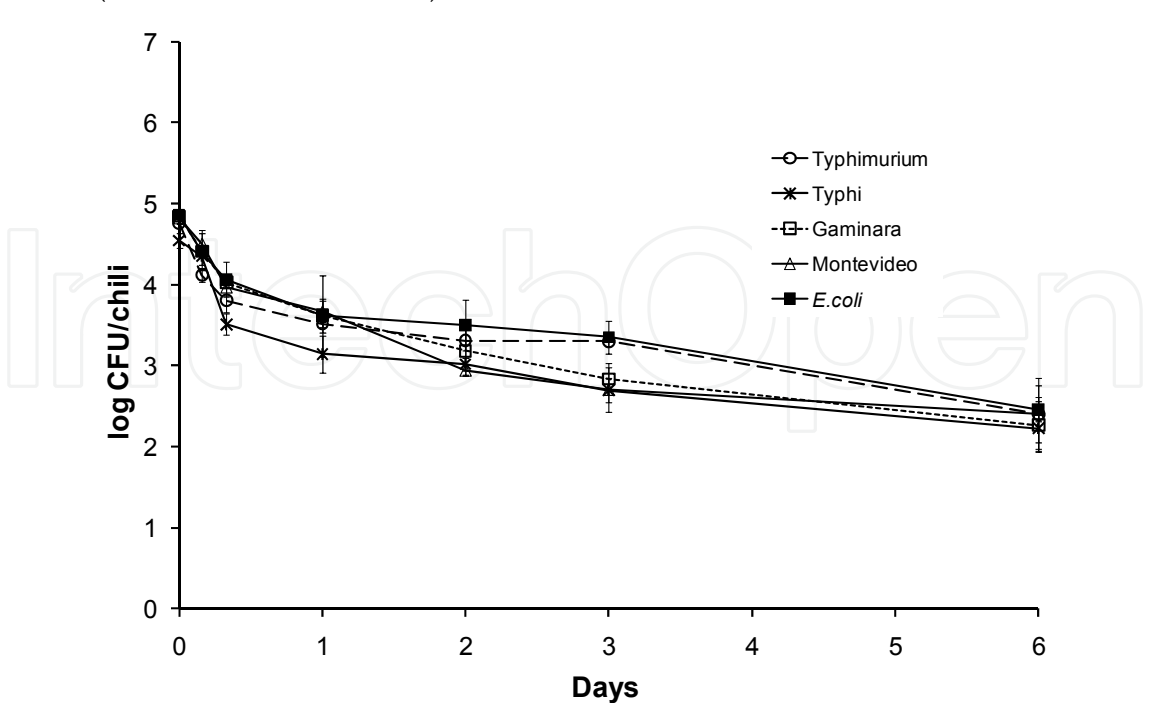


Fig. 3. Behavior of 4 *Salmonella* serotypes and a cocktail of three *E. coli* strains on whole jalapeño peppers at 25±2 °C (Castro-Rosas, 2011).

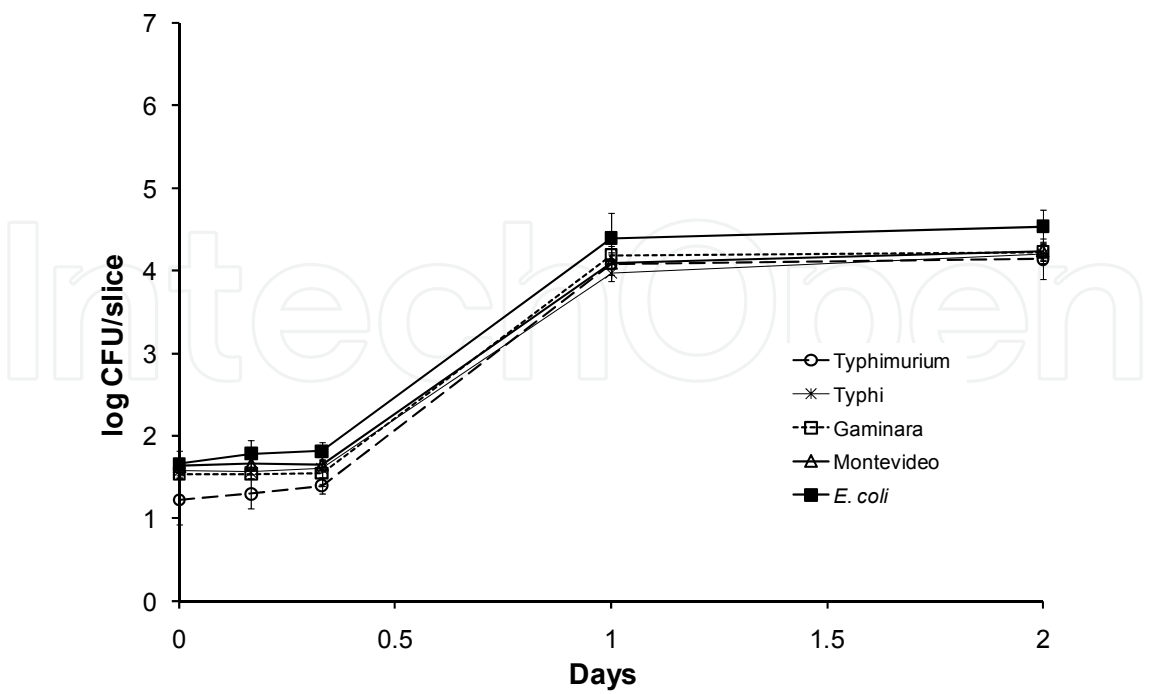


Fig. 4. Behavior of 4 *Salmonella* serotypes and a cocktail of three *E. coli* strains in jalapeño peppers slices at 25±2° C (Castro-Rosas, 2011).

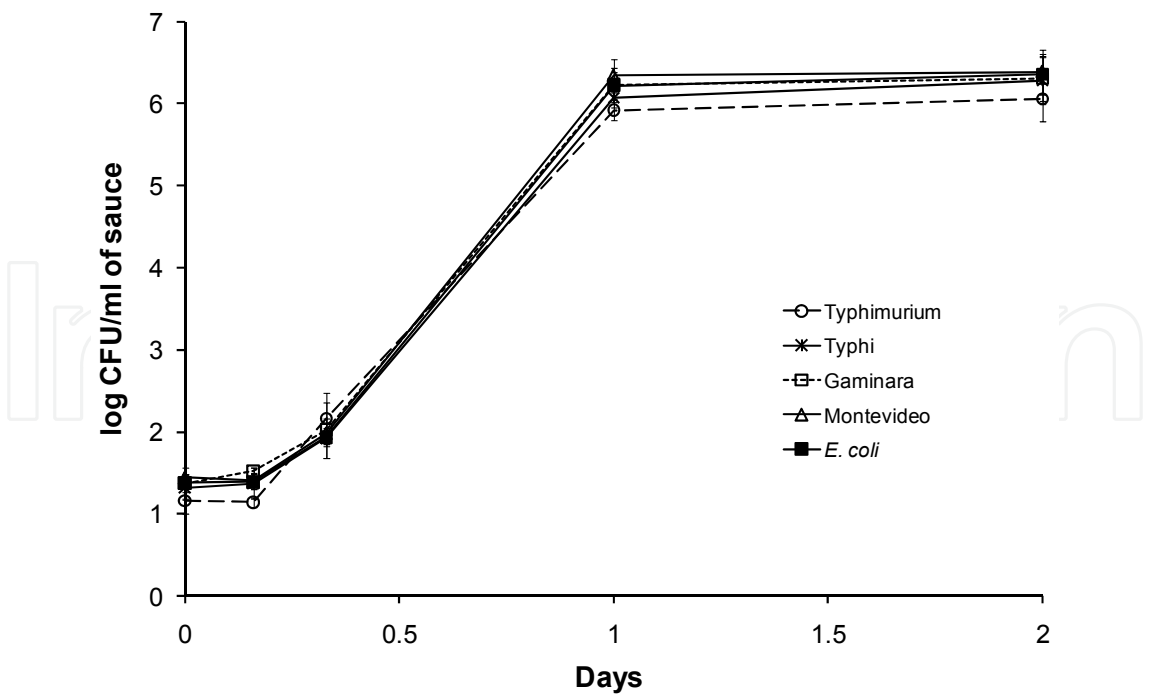


Fig. 5. Behavior of 4 *Salmonella* serotypes and a cocktail of three *E. coli* strains in a chili pepper sauce at 25±2° C (Castro-Rosas, 2011).

6. Conclusion

Food is clearly a major *Salmonella* infection vehicle. This vital role in salmonellosis outbreaks calls for strict measures to minimize transmission, such as appropriate animal husbandry and agriculture practices, protection of feeds and water from contamination, adequate waste disposal methods and an overall effort to maintain a clean environment around food from farm to fork. Additionally, much of the risk posed by *Salmonella* can be mitigated through proper handling and correct food safety practices, including thorough washing and disinfection, prevention of pre-consumption, human-borne contamination during preparation and storage, leftovers disposal, cooking before consumption and refrigerated storage (3-5 °C). Continuous monitoring and generation of data on *Salmonella* and salmonellosis outbreaks, and improved surveillance measures are also vital to controlling this public health hazard. A deeper understanding of *Salmonella* and its behavior in foods is still needed to ensure food safety and quality.

7. References

- Arslan, S. & Eyi, A. (2010). Occurrence and antimicrobial resistance profiles of *Salmonella* species in retail meat products. *Journal of Food Protection*, Vol.73, No.9, (September 2010), pp. 1613-1617, ISSN 0362-028X
- Asai, Y., Kaneko, M., Ohtsuka, K., Morita, Y., Kaneko, S., Noda, H., Furukawa, I., Takatori, K. & Hara-Kudo, Y. (2008). *Salmonella* prevalence in seafood imported into Japan, *Journal of Food Protection*, Vol.71, No.7, (July 2008), pp. 1460-1464, ISSN 0362-028X
- Atanassova, V., Reich, F. & Klein, G. (2008). Microbiological quality of sushi from sushi bars and retailers, *Journal of Food Protection*, Vol.71, No.4, (April 2008), pp. 860-864, ISSN 0362-028X
- Berrang, M.E., Bailey, J.S., Altekruse, S.F., Shaw, W.K. Jr., Patel, B.L., Meinersmann, R.J. & Fedorka-Cray, P.J. (2009). Prevalence, serotype, and antimicrobial resistance of *Salmonella* on broiler carcasses postpick and postchill in 20 U.S. processing plants, *Journal of Food Protection*, Vol.72, No.8, (August 2009), pp. 1610-1615, ISSN 0362-028X
- Betancor, L., Pereira, M., Martinez, A., Giossa, G., Fookes, M., Flores, K., Barrios, P., Repiso, V., Vignoli, R., Cordeiro, N., Algorta, G., Thomson, N., Maskell, D., Schelotto, F. & Chabalgoity, J.A. (2010). Prevalence of *Salmonella* enterica in poultry and eggs in Uruguay during an epidemic due to *Salmonella* enterica serovar Enteritidis, *Journal of Clinical Microbiology*, Vol.48, No.7, (July 2010), pp. 2413-2423, ISSN: 0095-1137
- Beuchat, L. R. (1996). Pathogenic microorganisms associated with fresh produce, *Journal of Food Protection*, Vol.59, No.2, (February 1996), pp. 204-216, ISSN 0362-028X
- Bone, A., Noel, H., Le-Hello, S., Pihier, N., Danan, C., Raguenaud, M.E., Salah, S., Bellali, H., Vaillant, V. Weill, F.X. & Jourdan-da Silva N. (2010). Nationwide outbreak of *Salmonella enterica* serotype 4,12:i:- infections in France, linked to dried pork sausage, March-May 2010, *Eurosurveillance*, Vol.15, No.24, (June 2010) pp. 2-4, ISSN 1560-7917
- Bouchrif, B., Paglietti, B., Murgia, M., Piana, A., Cohen, N., Ennaji, M., Rubino, S. & Timinouni, M. (2009). Prevalence and antibiotic-resistance of *Salmonella* isolated from food in Morocco. *Journal of Infection in Developing Countries*, Vol.28, No.3, (February, 2009), pp. 35-40, ISSN 19722680

- Boxall, N.S., Adak, G.K., D.E., Pinna. E. & Gillespie, I.A. (2011). A *Salmonella* Typhimurium phage type (PT) U320 outbreak in England, 2008: continuation of a trend involving ready-to-eat products. *Epidemiology and Infection*, (January 2011) Available on CJO 2011 doi:10.1017/S0950268810003080, ISSN 1469-4409
- Brandl, M.T., & Mandrell, R.E. (2002). Fitness of *Salmonella enterica* serovar Thompson in the Cilantro Phyllosphere, *Applied and Environmental Microbiolog*, Vol.68, No.7, (July 2002), pp. 3614-2621, ISSN 0099-2240
- Brillhart, C.D. & Joens, L.A. (2011). Prevalence and characterization of *Salmonella* serovars isolated from oysters served raw in restaurants, *Journal of Food Protection*, Vol.74, No.6, (June 2011), pp. 1025-1029, ISSN 0362-028X
- Bruun, T., Sørensen, G., Forshell, L.P., Jensen, T., Nygard, K., Kapperud, G., Lindstedt, B.A., Berglund, T., Wingstrand, A., Petersen, R.F., Müller, L., Kjelsø, C., Ivarsson, S., Hjertqvist, M., Löfdahl, S. & Ethelberg, S. (2009). An outbreak of *Salmonella* Typhimurium infections in Denmark, Norway and Sweden, *Eurosurveillance*, Vol.14, No.10, (March 2009) pp. 91-96, ISSN 1560-7917.
- Bucher, O., Holley, R.A., Ahmed. R., Tabor, H., Nadon, C., Ng, L.K. & D'Aoust, J.Y. (2007). Occurrence and characterization of *Salmonella* from chicken nuggets, strips, and pelleted broiler feed, *Journal of Food Protection*, Vol.70, No.10, (October 2007), pp. 2251-2258, ISSN 0362-028X
- Castro-Rosas J, Santos López EM, Gómez-Aldapa CA, González Ramírez CA, Villagomez-Ibarra JR, Gordillo-Martínez AJ, López AV, del Refugio Torres-Vitela M. (2010). Incidence and behavior of *Salmonella* and *Escherichia coli* on whole and sliced zucchini squash (Cucurbitapepo) fruit, *Journal of Food Protection*, Vol.73, No.8, (August 2010), pp. 1423-1429, ISSN 0362-028X
- Castro-Rosas, J., and E.F. Escartín. (1999). Incidence and germicide sensitivity of *Salmonella typhi* and *Vibrio cholerae* O1 in alfalfa sprouts, *Journal of Food Safety*, Vol.19, No.2, (August 1999), pp. 137-146, ISSN 0149-6085
- Castro-Rosas, J., Gómez-Aldapa, C.A., Acevedo-Sandoval, O.A., González Ramírez, C.A., Villagomez-Ibarra, J.R., Hernández, N.C., Villarruel-López, A. & Torres-Vitela, M. del R. (2011). Frequency and Behavior of *Salmonella* and *Escherichia coli* on Whole and Sliced Jalapeño and Serrano Peppers, *Journal of Food Protection*, Vol.74, No.6, (June 2011), pp. 874-881, ISSN 0362-028X
- CDC (center for disease control and prevention). (2008)a. Outbreak of *Salmonella* Serotype Saintpaul Infections Associated with Multiple Raw Produce Items --- United States, *MMWR*, Vol.57, No.34, (August 2008), pp.929-934, ISSN 0149-2195
- CDC. (2008)b. Multistate outbreak of *Salmonella* infections associated with frozen pot pies-- United States, 2007, *Morbidity and Mortality Weekly Report (MMWR)*, Vol.57, No.47, (November 2008), pp.1277-1280, ISSN 0149-2195
- CDC. (2008)c. *Salmonella* Litchfield outbreak associated with a hotel restaurant--Atlantic City, New Jersey, 2007, *MMWR*, Vol.57, No.28, (July 2008), pp.775-779, ISSN 0149-2195
- CDC. (2008)d. Outbreak of multidrug-resistant *Salmonella enterica* serotype Newport infections associated with consumption of unpasteurized Mexican-style aged cheese--Illinois, March 2006-April 2007, *MMWR*, Vol.57, No.16, (April 2008), pp.432-435, ISSN 0149-2195

- CDC. (2009)a. Outbreak of *Salmonella* Serotype Saintpaul Infections Associated with Eating Alfalfa Sprouts – United States, 2009, *MMWR*, Vol.58, No.18, (May 2009), pp.500-503, ISSN 0149-2195
- CDC. (2009)b. Surveillance for Foodborne Disease Outbreaks - United States, 2006. *MMWR*, Vol.58, No.22, (June 2009), pp.609-636, ISSN 0149-2195
- CDC. (2009)c. Multistate outbreak of *Salmonella* infections associated with peanut butter and peanut butter-containing products--United States, 2008-2009, *MMWR*, Vol.58, No.4, (February 2009), pp.85-90, ISSN 0149-2195
- CDC. (2010)a. Investigation Update: Multistate Outbreak of Human *Salmonella* Enteritidis Infections Associated with Shell Eggs. In: *Salmonella Outbreaks*, 20.7.2011, Available from: <http://www.cdc.gov/salmonella/enteritidis/index.html>
- CDC. (2010)b. Investigation Update: Multistate Outbreak of Human *Salmonella* Chester Infections. In: *Salmonella Outbreaks*, 20.7.2011, Available from: <http://www.cdc.gov/salmonella/enteritidis/index.html>
- CDC. (2010)c. Investigation Update: Multistate Outbreak of Human Typhoid Fever Infections Associated with Frozen Mamey Fruit Pulp. In: *Salmonella Outbreaks*, 20.7.2011, Available from: <http://www.cdc.gov/salmonella/typhoidfever/index.html>
- CDC. (2010)d. Investigation Update: Multistate Outbreak of Human *Salmonella* Newport Infections Linked to raw alfalfa sprouts. In: *Salmonella Outbreaks*, 20.7.2011, Available from: <http://www.cdc.gov/salmonella/newport/index.html>
- CDC. (2010)e. Investigation Update: Multistate Outbreak of Human *Salmonella* Montevideo Infections. In: *Salmonella Outbreaks*, 20.7.2011, Available from: <http://www.cdc.gov/salmonella/montevideo/index.html>
- CDC. (2010)f. Multiple-serotype *Salmonella* gastroenteritis outbreak after a reception --- Connecticut, 2009, *MMWR*, Vol.59, No.34, (September 2010), pp.1093-1097, ISSN 0149-2195
- CDC. (2011)a. Investigation Update: Ongoing Multistate Outbreak of Human *Salmonella* Agona Infections Linked to Whole, Fresh Imported Papayas. In: *Salmonella Outbreaks*, 20.7.2011, Available from: <http://www.cdc.gov/salmonella/agona-papayas/index.html>
- CDC. (2011)b. Investigation Update: Multistate Outbreak of Human *Salmonella* Enteritidis Infections Linked to Alfalfa Sprouts and Spicy Sprouts. In: *Salmonella Outbreaks*, 20.7.2011, Available from: <http://www.cdc.gov/salmonella/sprouts-enteritidis0611/070611/index.html>
- CDC. (2011)c. Investigation Announcement: Multistate Outbreak of *Salmonella* Hadar Infections Associated with Turkey Burgers. In: *Salmonella Outbreaks*, 20.7.2011, Available from: <http://www.cdc.gov/salmonella/hadar0411/040411/index.html>
- CDC. (2011)d. Investigation Update: Multistate Outbreak of *Salmonella* Panama Infections Linked to Cantaloupe. In: *Salmonella Outbreaks*, 20.7.2011, Available from: <http://www.cdc.gov/salmonella/panama0311/062311/index.html>
- CDC. (2011)e. Investigation Update: Multistate Outbreak of Human *Salmonella* I 4,[5],12:i:- Infections Linked to Alfalfa Sprouts. In: *Salmonella Outbreaks*, 20.7.2011, Available from: <http://www.cdc.gov/salmonella/i4512i-/021011/index.html>

- Cetinkaya, F., Cibik, R., Soyutemiz, G.E., Ozakin, C., Kayali, R. & Levent, B. (2008). *Shigella* and *Salmonella* contamination in various foodstuffs in Turkey, *Food Control*, Vol.19, No.11, (November 2008), pp. 1059-1063, ISSN 0956-7135
- Cleary, P., Browning, L., Coia, J., Cowden, J., Fox, A., Kearney, J., Lane, C., Mather, H., Quigley, C., Syed, Q. & Tubin-Delic, D. (2010). A foodborne outbreak of *Salmonella* Bareilly in the United Kingdom, *Eurosurveillance*, Vol.15, No.48, (December 2010) pp. 8-10, ISSN 1560-7917.
- Collins, J.E. (1997). Impact of changing consumer lifestyles on the emergence/reemergence of foodborne pathogens. *Emerging Infectious Diseases*. Vol.3, No.4, (October-December 1997) pp. 471-479, ISSN 1080-6059.
- Corry, J.E., Allen, V.M., Hudson, W.R., Breslin, M.F. & Davies, R.H. (2002). Sources of *Salmonella* on broiler carcasses during transportation and processing, modes of contamination and methods of control, *Journal of Applied Microbiology*, Vol.92, No.3, (March 2002), pp. 424-432, ISSN 1364-5072
- Dallal, M.M.S., Doyle, M.P., Rezadehbashi, M., Dabiri, H., Sanaei, M., Modarresi, S., Bakhtiari, R., Sharifiy, K., Taremi, M., Zali, M.R. & Sharifi-Yazdi, M.K. (2010). Prevalence and antimicrobial resistance profiles of *Salmonella* serotypes, *Campylobacter* and *Yersinia* spp. isolated from retail chicken and beef, Tehran, Iran, *Food Control*, Vol.21, No.4, (April 2010), pp. 388-392, ISSN 0956-7135
- Danyluk, M.D., Jones, T.M., Abd, S.J., Schlitt-Dittrich, F., Jacobs, M., Harris, L.J. (2007). Prevalence and amounts of *Salmonella* found on raw California almonds, *Journal of Food Protection*, Vol.70, No.4, (April 2007), pp. 820-827, ISSN 0362-028X
- Dickinson, C.H. (1986). *Adaptations of micro-organisms to climatic conditions affecting aerial plant surfaces*. In: Fokkema NJ, van den Heuvel J, editors. *Microbiology of the phyllosphere*. ISBN 0521323444, New York: Cambridge Univ. p 77-100.
- Dione, M.M., Ieven, M., Garin, B., Marcotty, T. & Geerts, S. (2009). Prevalence and antimicrobial resistance of *Salmonella* isolated from broiler farms, chicken carcasses, and street-vended restaurants in Casamance, Senegal, *Journal of Food Protection*, Vol.72, No.11, (November 2009), pp. 2423-2427, ISSN 0362-028X
- Dominguez, M., Jourdan-Da Silva, N., Vaillant, V., Pihier, N., Kermin, C., Weill, F.X., Delmas, G., Kerouanton, A., Brisabois, A. & De Valk, H. (2009). Outbreak of *Salmonella* enterica serotype Montevideo infections in France linked to consumption of cheese made from raw milk, *Foodborne Pathogens and Disease*, Vol.6, No.1, (January-February 2009), pp. 121-128, ISSN 1535-3141
- Doran, G., Sheridan, F., DeLappe, N., O'Hare, C., Anderson, W., Corbett-Feeney, G. & Cormican, M. (2005). *Salmonella* enterica serovar Kedougou contamination of commercially grown mushrooms, *Diagnostic Microbiology and Infectious Disease*, Vol.51, No.1, (January 2005), pp. 73-76, ISSN 0732-8893
- Dyda, A., Hundy, R., Moffatt, C.R. & Cameron, S. (2009). Outbreak of *Salmonella* Typhimurium 44 related to egg consumption, *Communicable Diseases Intelligence*, Vol.33, No.4, (December 2009), pp. 414-418, ISSN 0725-3141
- Ethelberg, S., Wingstrand, A., Jensen, T., Sorensen, G., Muller, L., Lisby, M., Nielsen, E. & Molbak, K. (2008). Large outbreaks of *Salmonella* Typhimurium infection in Denmark in 2008, *Eurosurveillance*, Vol.13, No.44, (October 2008) pp. 11-13, ISSN 1560-7917

- Farooqui, A., Khan, A. & Kazmi, S.U. (2009). Investigation of a community outbreak of typhoid fever associated with drinking water. *BMC Public Health*, Vol.9, (December 2009), pp. 476, doi:10.1186/1471-2458-9-476, ISSN 1471-2458
- Fluckey, W.M., Sanchez, M.X., McKee, S.R., Smith, D., Pendleton, E. & Brashears, M.M. (2003). Establishment of a microbiological profile for an air-chilling poultry operation in the United States, *Journal of Food Protection*, Vol.66, No.2, (February 2003), pp. 272-279, ISSN 0362-028X
- Freitas, C.G.d., Santana, A.P., Silva, P.H.C.d., Goncalves, V.S.P., Barros, M.d.A.F., Torres, F.A.G., Murata, L.S. & Perecmanis, S. (2010). PCR multiplex for detection of *Salmonella* Enteritidis, Typhi and Typhimurium and occurrence in poultry meat, *International Journal of Food Microbiology*, Vol.139, No. 1-2, (April 2010), pp. 15-22, ISSN 0168-1605
- Fukushima, H., Okuno, J., Fujiwara, Y., Hosoda, T., Kurazono, T., Ohtsuka, K., Yanagawa, K. & Yamaguchi M. (2008). An outbreak of *Salmonella* food poisoning at a snapping turtle restaurant, *Japanese Journal of Infectious Diseases*, Vol.61, No.4, (July 2008), pp. 328, ISSN 1344-6304
- Gibbs, R., Pingault, N., Mazzucchelli, T., O'Reilly, L., MacKenzie, B., Green, J., Mogyorosy, R., Stafford, R., Bell, R., Hiley, L., Fullerton, K. & Van Buynder, P. (2009). An outbreak of *Salmonella enterica* serotype Litchfield infection in Australia linked to consumption of contaminated papaya, *Journal of Food Protection*, Vol.72, No.5, (May 2009), pp. 1094-1098, ISSN 0362-028X
- Greenberg, B & Klowden M. (1972). Enteric bacterial interections in insects. *The American Journal of Clinical Nutrition*. Vol.25 (December 1972), pp 1459-1466, ISSN 0002-9165
- Greenwood, M.H., & Hopper, W.L. (1983). Chocolate bars contaminated with *Salmonella napoli*: An infectivity study, *British Medical Journal*, Vol.286, No.6375 (April, 1983), pp. 1394, ISSN 0959 8138
- Gutiérrez-Cogco, L., Montiel-Vázquez, E., Aguilera-Pérez, P. & González-Andrade, M. C. (2000). Serotipos de *Salmonella* identificados en los servicios de salud de México. *Salud Pública Méx.* Vol.42, No. 6, (November-December 2000) pp. 490-495. ISSN 0036-3634
- Harris, L. J., J. N. Farber, L. R. Beuchat, M. E. Parish, T. V. Suslow, E. H. Garrett, & F. F. Busta. (2003). Outbreaks Associated with Fresh Produce: Incidence, Growth, and Survival of Pathogens in Fresh and Fresh Cut Produce. *Comprehensive Reviews in Food Science and Food Safety*, Vol.2, (May 2003), pp. 78-141, ISSN 1541-4337
- Hasan, M.N., Ara, N., Mamun, S.A., Rahman, M.M. & Rahman, M. H. (2009). Prevalence of *Salmonella* spp. in chicken egg from Khulna city, *Journal of Innovation and Development Strategy*, Vol.3, No.3, (May 2009), pp. 1-6, ISSN 2075-1648
- Heaton, J.C. & Jones, K. (2008). Microbial contamination of fruit and vegetables and the behaviour of enteropathogens in the phyllosphere: a review, *Journal of Applied Microbiology*, Vol.104, No.3, (March 2008), pp. 613-626, ISSN 1364-5072
- Herikstad, H., Motarjemi, Y. & Tauxe, R.V. (2002). *Salmonella* surveillance, a global survey of public health serotyping, *Epidemiology and Infection*, Vol.129, No.1, (August 2002), pp. 1-8, ISSN 1469-4409
- Islam, M., Morgan, J. Doyle, M.P., Phatak, S.C., Millner, P. & Jiang, X. (2004), Fate of *Salmonella enterica* Seroovar Typhimurium on carrots and radishes grown in fields

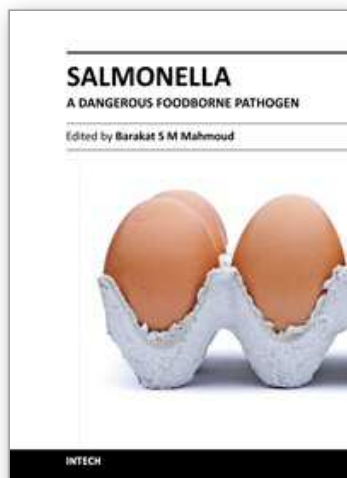
- treated with contaminated manure composts or irrigation water, *Applied and Environmental Microbiolog*, Vol.70, No.4, (April 2004), pp. 2497–2502, ISSN 0099-2240
- Islam, M., Morgan, J., Doyle, M.P., Phatak, S.C., Millner, P. & Jiang, X. (2004). Persistence of *Salmonella enterica* serovar Typhimurium on lettuce and parsley and in soils on which they were grown in fields treated with contaminated manure composts or irrigation water, *Foodborne Pathogens and Disease*, Vol.1, No.1, (July 2004), pp. 27-35, ISSN 1535-3141
- Issack, M.I., Hendriksen, R.S., Lun, P.L., Lutchun, R.K. & Aarestrup, F.M. (2009). *Salmonella enterica* serovar Typhimurium in Mauritius linked to consumption of marlin mousse, *Foodborne Pathogens and Disease*, Vol.6, No.6, (July-August 2009), pp.739-741, ISSN 1535-3141
- Jain, S., Bidol, S.A., Austin, J.L., Berl, E., Elson, F., Lemaile-Williams, M., Deasy, M.3rd, Moll, M.E., Rea, V., Vojdani, J.D., Yu, P.A., Hoekstra, R.M., Braden, C.R. & Lynch, M.F. (2009). Multistate outbreak of *Salmonella* Typhimurium and Saintpaul infections associated with unpasteurized orange juice--United States, 2005. *Clinical Infectious Disease*, Vol.48, No.8, (April 2009) pp. 1065-1071, ISSN 1058-4838
- Jalali, M., Abedi, D., Pourbakhsh, S.A. & Ghoukasin, K. (2008). Prevalence of *Salmonella* spp. in raw and cooked foods in Isfahan-Iran, *Journal of Food Safety*, Vol.28, No.3, (August 2008), pp. 442-452, ISSN 0149-6085
- Janmohamed, K., Zenner, D., Little, C., Lane, C., Wain, J., Charlett, A., Adak, B. & Morgan, D. (2011). National outbreak of *Salmonella* Enteritidis phage type 14b in England, September to December 2009: case-control study, *Eurosurveillance*, Vol.16, No.15, (April 2011) pp. 5-10, ISSN 1560-7917
- Jardine, A., Ressler, K.A., Botham, S., Irwin, M.J., Shadbolt, C., Vally, H. & Ferson, M.J. (2011). An Outbreak of *Salmonella* Typhimurium 108/170 at a Privately Catered Barbeque at a Sydney Sports Club, *Foodborne Pathogens and Disease*, In Press, doi:10.1089/fpd.2011.0918, ISSN 1535-3141
- Kuhn, K., Torpdahl, M., Frank, C., Sigsgaard, K. & Ethelberg, S. 2011. An outbreak of *Salmonella* Typhimurium traced back to salami, Denmark, April to June 2010. *Eurosurveillance*, Vol.16, No.19, (May 2011), pp. 13-16, ISSN 1560-7917
- Lestari, S.I., Han, F., Wang, F. & Ge, B. 2009. Prevalence and antimicrobial resistance of *Salmonella* serovars in conventional and organic chickens from Louisiana retail stores, *Journal of Food Protection*, Vol.72, No.6, (June 2007), pp. 1165-1172, ISSN 0362-028X
- McCallum, L., Torok, M., Dufour, M.T., Hall, A. & Cramp, G. 2010. An outbreak of *Salmonella typhimurium* phage type 1 associated with watermelon in Gisborne, January 2009, *The New Zealand Medical Journal*, Vol.123, No.1322, (September 2010), pp. 39-45, ISSN 0028-8446
- Mizoguchi, Y., Suzuki, E., Tsuchida, H., Tsuda, T., Yamamoto, E., Nakase, K., Doi, H. (2011). Outbreak of *Salmonella* Braenderup infection originating in boxed lunches in Japan in 2008, *Acta Medica Okayama*, Vol.65, No.2, (April 2011), pp. 63-69. ISSN 0386300X
- Moore, B.C., Martinez, E., Gay, J.M. & Rice, D.H. (2003). Survival of *Salmonella enterica* in freshwater and sediments and transmission by the aquatic midge *Chironomus tentans* (Chironomidae: Diptera), *Applied and Environmental Microbiolog*, Vol.69, No.8, (August 2003), pp. 4556–4560, ISSN 0099-2240
- Much, P., Pichler, J., Kasper, S., Lassnig, H., Kornschöber, C., Buchner, A., König, C. & Allerberger, F. (2009). A foodborne outbreak of *Salmonella* Enteritidis phage type 6

- in Austria, 2008, *Wiener Klinische Wochenschrift*, Vol.121, No.3-4, pp. 132-136. ISSN. 0043-5325
- Natvig, E.E., Ingham, S. C., Ingham, B. H., Cooperband, L. R. & Roper, T. R. (2002). *Salmonella* enterica serovar Typhimurium and *Escherichia coli* contamination of root and leaf vegetables grown in soils with incorporated bovine manure, *Applied and Environmental Microbiolog*, Vol.68, No.6 (June 2002), pp. 2737-2744, ISSN 0099-2240
- Nicolay, N., Thornton, L., Cotter, S., Garvey, P., Bannon, O., McKeown, P., Cormican, M., Fisher, I., Little, C., Boxall, N., DE Pinna E, Peters, T.M., Cowden, J., Salmon, R., Mason, B., Irvine, N., Rooney, P. & O'Flanagan, D. 2011. *Salmonella* enterica serovar Agona European outbreak associated with a food company, *Epidemiology and Infection*, Vol.139, No.8, (August 2011), pp. 1272-1280, ISSN 1469-4409
- Niehaus, A.J., Apalata, T., Coovadia, Y.M., Smith, A.M. & Moodley, P. (2011). An outbreak of foodborne salmonellosis in rural KwaZulu-Natal, South Africa, *Foodborne Pathogens and Disease*, Vol.8, No.6, (June 2011), pp. 693-697, ISSN 1535-3141
- Nielsen, B. & Wegener, H.C. (1997). Public health and pork and pork products, regional perspectives of Denmark, *Rev. Sci. Tech.* Vol.16, No.2, (August 1997), pp. 513-524,
- Noël, H., Hofhuis, A., De Jonge, R., Heuvelink, A.E., De Jong, A., Heck, M.E., De Jager, C. & Van Pelt, W. 2010. Consumption of fresh fruit juice: how a healthy food practice caused a national outbreak of *Salmonella* Panama gastroenteritis, *Foodborne Pathogens and Disease*, Vol.7, No.4, (April 2010), pp. 375-381, ISSN 1535-3141
- Northcutt, J.K., Berrang, M.E., Dickens, J.A., Fletcher, D.L. & Cox, N.A. (2003). Effect of broiler age, feed withdrawal, and transportation on levels of coliforms, *Campylobacter*, *Escherichia coli* and *Salmonella* on carcasses before and after immersion chilling. *Poultry Science*, Vol.82, No.1, (January 2003), pp. 169-173. ISSN: 0032-5791
- Nygård, K., Lassen, J., Vold, L., Andersson, Y., Fisher, I., Löfdahl, S., Threlfall, J., Luzzi, I., Peters, T., Hampton, M., Torpdahl, M., Kapperud, G. & Aavitsland, P. (2008). Outbreak of *Salmonella* Thompson infections linked to imported rucola lettuce, *Foodborne Pathogens and Disease*, Vol.5, No.2, (April 2008), pp. 165-173, ISSN 1535-3141
- O'Flanagan, D., Cormican, M., McKeown, P., Nicolay, N., Cowden, J., Mason, B., Morgan, D., Lane, C., Irvine, N., Browning, L. 2008. A multi-country outbreak of *Salmonella* Agona, February - August 2008, *Eurosurveillance*, Vol.13, No.27-39, (July-september 2008), pp. 453-454, ISSN 1560-7917
- Orozco, L., Rico-Romero, L. & Escartín, E.F. (2008). Microbiological profile of greenhouses in a farm producing hydroponic tomatoes, *Journal of Food Protection*, Vol.71, No.1, (January 2008), pp. 60-65, ISSN 0362-028X
- Pakalniskiene, J., Falkenhorst, G., Lisby, M., Madsen, S.B., Olsen, K.E., Nielsen, E.M., Mygh, A., Boel, J. & Mølbak, K. (2009). A foodborne outbreak of enterotoxigenic *Escherichia coli* and *Salmonella* Anatum infection after a high-school dinner in Denmark, November 2006, *Epidemiology and Infection*, Vol.137, No.3, (March 2009), pp. 396-401, ISSN 1469-4409
- Parish, M.E., Narciso, J.A. & Friedrich, L.M. (1997). Survival of *Salmonellae* in orange juice, *Journal of Food Safety*, Vol.17, No.4, (December 1997), pp. 273-281, ISSN 0149-6085
- Pastore, R., Schmid, H., Altpeter, E., Baumgartner, A., Hächler, H., Imhof, R., Sudre, P. & Boubaker, K. (2008). Outbreak of *Salmonella* serovar Stanley infections in Switzerland linked to locally produced soft cheese, September 2006 - February 2007, *Eurosurveillance*, Vol.13, No.27-39, (July-september 2008), pp. 403-407, ISSN 1560-7917

- Patel, M.K., Chen, S., Pringle, J., Russo, E., Viñaras, J., Weiss, J., Anderson, S., Sunenshine, R., Komatsu, K., Schumacher, M., Flood, D., Theobald, L., Bopp, C., Wannemuehler, K., White, P., Angulo, F.J., Behravesh, C.B. (2010). A prolonged outbreak of *Salmonella* Montevideo infections associated with multiple locations of a restaurant chain in Phoenix, Arizona, 2008, *Journal of Food Protection*, Vol.73, No.10, (October 2010), pp. 1858-1063, ISSN 0362-028X
- Pekova, L. (2008). An epidemic outbreak of *Salmonella* typhimurium in a Romany ethnic community--a clinical-epidemiological survey, *Acta Clinica Croatica*, Vol.47, No.1, (March 2008), pp. 9-12, ISSN:0353-9466
- Pezzoli, L., Elson, R., Little, C.L., Yip, H., Fisher, I., Yishai, R., Anis, E., Valinsky, L., Biggerstaff, M., Patel, N., Mather, H., Brown, D.J., Coia, J.E., Van Pelt, W., Nielsen, E.M., Ethelberg, S., de Pinna, E., Hampton, M.D., Peters, T. & Threlfall, J. (2008). Packed with *Salmonella*--investigation of an international outbreak of *Salmonella* Senftenberg infection linked to contamination of prepacked basil in 2007, *Foodborne Pathogens and Disease*, Vol.5, No.5, (October 2008), pp. 661-668, ISSN 1535-3141
- Phillips, D., Jordan, D., Morris, S., Jenson, I. & Sumner, J. (2008). A national Survey of the Microbiological Quality of Retail Raw Meats in Australia, *Journal of Food Protection*, Vol.71, No.6, (June 2008), pp. 1232-1236, ISSN 0362-028X
- Prendergast, D.M., Duggan, S.J., Gonzales-Barron, U., Fanning, S., Butler, F., Cormican, M. & Duffy, G. (2009). Prevalence, numbers and characterizations of *Salmonella* spp. on Irish retail pork, *International Journal of Food Microbiology*, Vol.131, No. 2-3, (May 2009), pp. 233-239, ISSN 0168-1605
- Quiroz-Santiago, C., Rodas-Suárez, O.R., Vázquez, C.R., Fernández, F.J., Quiñones-Ramírez, E.I. & Vázquez-Salinas, C. (2009). Prevalence of *Salmonella* in Vegetables from Mexico, *Journal of Food Protection*, Vol.72, No.6, (June 2009), pp. 1279-1282, ISSN 0362-028X
- Reilly, W.J., Forbes, G.I., Paterson, G.M. & Sharp, J.C. (1981). Human and animal salmonellosis in Scotland associated with environmental contamination, 1973-79. *Veterinary Record*, Vol.108, No.26, (June 1981), pp 553-555, ISSN 0042-4900
- Reiter, M.G., Fiorese, M.L., Moretto, G., López, M.C., Jordano, R. (2007). Prevalence of *Salmonella* in a poultry slaughterhouse, *Journal of Food Protection*, Vol.70, No.7, (July 2007), pp. 1723-1725, ISSN 0362-028X
- Reynolds, A., Moffatt, C.R., Dyda, A., Hundy, R.L., Kaye, A.L., Krsteski, R., Rockliff, S., Kampen, R., Kelly, P.M. & O'Brien, E.D. (2010). An outbreak of gastroenteritis due to *Salmonella* Typhimurium phage type 170 associated with consumption of a dessert containing raw egg, *Communicable Diseases Intelligence*, Vol.34, No.3, (September 2010), pp. 329-333, ISSN 0725-3141
- Roberts-Witteveen, A.R., Campbell, B.A., Merritt, T.D., Massey, P.D., Shadbolt, C.T. & Durrheim, D.N. (2009). Egg-associated *Salmonella* outbreak in an aged care facility, New South Wales, 2008, *Communicable Diseases Intelligence*, Vol.33, No.1, (March 2009), pp. 49-52, ISSN 0725-3141
- Rodriguez-Urrego, J., Herrera-Leon, S., Echeita-Sarriondia, A., Soler, P., Simon, F. & Mateo, S. (2010). Nationwide outbreak of *Salmonella* serotype Kedougou associated with infant formula, Spain, 2008. *Eurosurveillance*, Vol.15, No.22, (June 2010), pp. 19-23, ISSN 1560-7917

- SAGARPA (Secretaría de Agricultura, Ganadería, Recursos naturales, Pesca y Alimentación, México). 2010. Cierre de la producción agrícola por cultivo, México, In: Servicio de Información Agroalimentaria y Pesquera, 20.7.2011, Available from: http://www.siap.gob.mx/index.php?option=com_wrapper&view=wrapper&Itemid=350
- Sapers, G.M., Gorny, J.R. & Yousef, A.E. (ed.). 2006. *Microbiology of Fruits and Vegetables*. ISBN 0849322618, CRC Press, Boca Raton, FL.
- Secretaría de Salud. (2011). Enfermedades Infecciosas y Parasitarias del Aparato Digestivo, In *Boletín Epidemiología. México*. 20.7.2011, Available from: <http://www.dgepi.salud.gob.mx/boletin/boletin.htm>
- Slinko, V.G., McCall, B.J., Stafford, R.J., Bell, R.J., Hiley, L.A., Sandberg, S.M., White, S.A. & Bell, K.M. (2009). Outbreaks of *Salmonella* Typhimurium phage type 197 of multiple genotypes linked to an egg producer. *Communicable Diseases Intelligence*, Vol.33, No.4, (December 2009), pp. 419-425, ISSN 0725-3141
- Sotir, M.J., Ewald, G., Kimura, A.C., Higa, J.I., Sheth, A., Troppy, S., Meyer, S., Hoekstra, R.M., Austin, J., Archer, J., Spayne, M., Daly, E.R. & Griffin, P.M. (2009). Outbreak of *Salmonella* Wandsworth and Typhimurium infections in infants and toddlers traced to a commercial vegetable-coated snack food, *The Pediatric Infectious Disease Journal*, Vol.28, No.12, (December 2009) pp. 1041-1046, ISSN 0891-3668
- Takeuchi, K., Matute, C.M. Hassan, A. N. & Frank, J.F. (2000). Comparison of the Attachment of *Escherichia coli* O157:H7, *Listeria monocytogenes*, *Salmonella* Typhimurium, and *Pseudomonas fluorescens* to Lettuce Leaves, *Journal of Food Protection*, Vol.63, No.10, (October 2000), pp. 1433-1437, ISSN 0362-028X
- Thunberg, R.L., Tran, T.T., Bennett, R.W. & Matthews, R.N. (2002). Microbial evaluation of selected fresh produce obtained at retail markets, *Journal of Food Protection*, Vol.65, No.4, (April 2002), pp. 677-682, ISSN 0362-028X
- Torres-Vitela, M.R., Mendoza-Bernardo, M., Castro-Rosas, J., Gomez-Aldapa, C.A, Garay-Martinez, L.E., Navarro-Hidalgo, V., Villarruel-López A. (2011). Frequency of *Salmonella*, *Listeria monocytogenes*, *Escherichia coli* O157:H7 and staphylococcal toxin in two types of fresh cheese, *Journal of Food Protection*, In press, ISSN 0362-028X
- Tunung, R., Chai, L.C., Usha, M.R., Lee, H.Y., Fatimah, A.B., Farinazleen, M.G. & Son, R. (2007). Characterization of *Salmonella enterica* isolated from street food and clinical samples in Malaysia, *ASEAN Food Journal*, Vol.14, No.3, pp. 161-173, ISSN: 01277324.
- Ugbogu, O. C., Nwachukwu, N. C. & Ogbuagu, U. N. (2006). Isolation of *Salmonella* and *Shigella* species from house flies (*Musca domestica* L.) in Uturu, Nigeria, *African Journal of Biotechnology*, Vol.5, No.11, (June 2006), pp. 1090-1091, ISSN 1684-5315
- Uljas, H.E. & Ingham, S.C. (1999). Combinations of intervention treatments resulting in 5-log₁₀ unit reductions in numbers of *Escherichia coli* O157:H7 and *Salmonella* typhimurium DT104 organisms in apple cider, *Applied and Environmental Microbiology*, Vol.65, No.5 (May 1999), pp. 1924-1929, ISSN 0099-2240
- USDA (United States Department of Agriculture). (2010). Agricultural Marketing Service, Fruit and Vegetable Programs, Market News Branch. Daily Movement Report - All F & V. 20.7.2011, Available from: http://search.ams.usda.gov/mndms/2010/01/FV20100108DDAILY_MOVE.PDF#xml=http://search.ams.usda.gov/mnsearch/hiliteinfo.aspx?i=1&docid=FV20100108DDAILY_MOVE.PDF.

- Van Cauteren, D., Jourdan-da Silva, N., Weill, F.X., King, L., Brisabois, A., Delmas, G., Vaillant, V. & de Valk, H. (2009). Outbreak of *Salmonella* enterica serotype Muenster infections associated with goat's cheese, France, March 2008. *Eurosurveillance*, Vol.14, No.26-38, (July-September 2009), pp. 380-382, ISSN 1560-7917
- Van Duynhoven, Y.T., Isken, L.D., Borgen, K., Besselse, M., Soethoudt, K., Haitsma, O., Mulder, B., Notermans, D.W., De Jonge, R., Kock, P., Van Pelt, W., Stenvers, O. & Van Steenberghe, J. (2009). A prolonged outbreak of *Salmonella* Typhimurium infection related to an uncommon vehicle: hard cheese made from raw milk, *Epidemiology and Infection*, Vol.137, No.11, (November 2009), pp. 1548-1557, ISSN 1469-4409
- Van Kessel, J.A, Karns J.S., Lombard, J.E. & Kopral, C.A. (2011). Prevalence of *Salmonella enterica*, *Listeria monocytogenes*, and *Escherichia coli* Virulence Factors in Bulk Tank Milk and In-Line Filters from U.S. Dairies, *Journal of Food Protection*, Vol.74, No.5, (May 2011), pp. 759-768, ISSN 0362-028X
- Van, T.T.H., Moutafis, G., Istivan, T., Tran, L.T. & Coloe, P. J. (2007). Detection of *Salmonella* spp. in retail raw food samples from Vietnam and characterization of their antibiotic resistance, *Applied and Environmental Microbiolog*, Vol.73, No.21, (November 2007), pp. 6885-6890, ISSN 0099-2240
- Whelan, J., Noel, H., Friesema, I., Hofhuis, A., de Jager, C.M., Heck, M., Heuvelinkm A. & Van Pelt, W. (2010). National outbreak of *Salmonella* Typhimurium (Dutch) phage-type 132 in the Netherlands, October to December 2009, *Eurosurveillance*, Vol.15, No.44, (November 2010), pp. 6-10, ISSN 1560-7917
- Wong, D. M. A.L. F., Hald, T., Wolf, P.J.v.d. & Swanenburg, M. (2002). Epidemiology and control measures for *Salmonella* in pigs and pork, *Livestock Production Science*, Vol.76, No.3, (September 2002), pp. 215-222, ISSN 0301-6226
- Wong, T.L., Nicol, C., Cook, R. & MacDiarmid, S. (2007). *Salmonella* in uncooked retail meats in New Zealand, *Journal of Food Protection*, Vol.70, No.6, (June 2007), pp. 1360-1365, ISSN 0362-028X
- Yang, B., Qu, D., Zhang, X., Shen, J., Cui, S., Shi, Y., Xi, M., Sheng, M., Zhi, S. & Meng, J. (2010). Prevalence and characterization of *Salmonella* serovars in retail meats of marketplace in Shaanxi, China, *International Journal of Food Microbiology*, Vol.141, No. 1-2, (June 2010), pp. 63-72, ISSN 0168-1605
- Yang, H.H., Gong, J., Zhang, J., Wang, M.L., Yang, J., Wu, G.Z., Quan, W.L., Gong, H.M., Szu, S.C. (2010). An outbreak of *Salmonella* Paratyphi A in a boarding school: a community-acquired enteric fever and carriage investigation, *Epidemiology and Infection*, Vol.138, No.12, (December 2010), pp. 1765-1774, ISSN 1469-4409
- Zhuang, R.Y., Beuchat, L.R., & Angulo, F.J. (1995). Fate of *Salmonella montevideo* on and in raw tomatoes as affected by temperature and treatment with chlorine, *Applied and Environmental Microbiology*, Vol.61, No.6 (June 1995), pp. 2127-2131, ISSN 0099-2240



Salmonella - A Dangerous Foodborne Pathogen

Edited by Dr. Dr. Barakat S M Mahmoud

ISBN 978-953-307-782-6

Hard cover, 450 pages

Publisher InTech

Published online 20, January, 2012

Published in print edition January, 2012

More than 2,500 serotypes of Salmonella exist. However, only some of these serotypes have been frequently associated with food-borne illnesses. Salmonella is the second most dominant bacterial cause of food-borne gastroenteritis worldwide. Often, most people who suffer from Salmonella infections have temporary gastroenteritis, which usually does not require treatment. However, when infection becomes invasive, antimicrobial treatment is mandatory. Symptoms generally occur 8 to 72 hours after ingestion of the pathogen and can last 3 to 5 days. Children, the elderly, and immunocompromised individuals are the most susceptible to salmonellosis infections. The annual economic cost due to food-borne Salmonella infections in the United States alone is estimated at \$2.4 billion, with an estimated 1.4 million cases of salmonellosis and more than 500 deaths annually. This book contains nineteen chapters which cover a range of different topics, such as the role of foods in Salmonella infections, food-borne outbreaks caused by Salmonella, biofilm formation, antimicrobial drug resistance of Salmonella isolates, methods for controlling Salmonella in food, and Salmonella isolation and identification methods.

How to reference

In order to correctly reference this scholarly work, feel free to copy and paste the following:

Carlos Alberto Gómez-Aldapa, Ma. del Refugio Torres-Vitela, Angélica Villarruel-López and Javier Castro-Rosas (2012). The Role of Foods in Salmonella Infections, *Salmonella - A Dangerous Foodborne Pathogen*, Dr. Dr. Barakat S M Mahmoud (Ed.), ISBN: 978-953-307-782-6, InTech, Available from: <http://www.intechopen.com/books/salmonella-a-dangerous-foodborne-pathogen/the-role-of-foods-in-salmonella-infections>

INTech
open science | open minds

InTech Europe

University Campus STeP Ri
Slavka Krautzeka 83/A
51000 Rijeka, Croatia
Phone: +385 (51) 770 447
Fax: +385 (51) 686 166
www.intechopen.com

InTech China

Unit 405, Office Block, Hotel Equatorial Shanghai
No.65, Yan An Road (West), Shanghai, 200040, China
中国上海市延安西路65号上海国际贵都大饭店办公楼405单元
Phone: +86-21-62489820
Fax: +86-21-62489821

© 2012 The Author(s). Licensee IntechOpen. This is an open access article distributed under the terms of the [Creative Commons Attribution 3.0 License](https://creativecommons.org/licenses/by/3.0/), which permits unrestricted use, distribution, and reproduction in any medium, provided the original work is properly cited.

IntechOpen

IntechOpen