

We are IntechOpen, the world's leading publisher of Open Access books Built by scientists, for scientists

6,900

Open access books available

186,000

International authors and editors

200M

Downloads

Our authors are among the

154

Countries delivered to

TOP 1%

most cited scientists

12.2%

Contributors from top 500 universities



WEB OF SCIENCE™

Selection of our books indexed in the Book Citation Index
in Web of Science™ Core Collection (BKCI)

Interested in publishing with us?
Contact book.department@intechopen.com

Numbers displayed above are based on latest data collected.
For more information visit www.intechopen.com



Central Sensitization and Descending Facilitation in Chronic Pain State

Emiko Senba¹, Keiichiro Okamoto² and Hiroki Imbe¹

¹Wakayama Medical University,

²University of Minnesota, School of Dentistry,

¹Japan

²USA

1. Introduction

Physiological pain is inevitable for us to avoid harmful stimuli as one of the self-defense mechanisms. On the other hand, pathological pain, especially deep tissue pain often persists and develops into chronic pain states. Patients suffering chronic pain often complain of pain and tenderness in various parts of the body, and chronic stress often exacerbates their pain. Fibromyalgia represents the extreme end of the spectrum of chronic widespread pain syndromes. In this chapter, we address questions as follows; why deep tissue pain tends to pass into a chronic state (is deep tissue pain more unpleasant than superficial pain?), how or why the whole body aches in these patients, and how chronic stress exacerbate their pain. We speculate that persistent pain-induced brain sensitization underlies these chronic pain states. Areas involved in the emotional aspects of pain, such as the anterior cingulate cortex (ACC), insular cortex (IC), amygdala, may be sensitized. Memory of pain based on sensitization of brain areas involved in emotional response is useful for us to avoid future damage. However, in some pathological conditions, descending pain control system may switch from inhibition to facilitation, with unknown mechanism, and facilitate pain sensation and behavior. Serotonin (5-HT) may be involved in the descending facilitation in pathological pain conditions. Understanding of the etiology, pathophysiology and treatment of chronic pain states is an urgent issue from the view points of patients' quality of life and socio-economy.

2. Clinical features of chronic pain states

2.1 Clinical features of fibromyalgia syndrome

Fibromyalgia (FM) or fibromyalgia syndrome (FMS) is an intractable widespread pain disorder of unknown etiology that affects about 2-3% of population and is most frequently diagnosed in women. One unique feature of FM is its wide spread nature of pain and tenderness. Despite extensive investigations, no distinct tissue damage, structural abnormalities, or evidence for a source of chronic stimulation of pain afferents have been detected in FM patients (Meeus & Nijs, 2007). Furthermore, FM pain is diffuse and multifocal, lacks a distinct spatial localization, often waxes and wanes and is frequently migratory in nature. These features have led to the hypothesis that hyperexcitability of the

central nervous system or dysfunction of the central inhibitory system may exist in these patients. Central hyperexcitability could explain exaggerated pain and withdrawal reflex of FM patients with minimal and undetectable tissue damage, in that the nociceptive signals are amplified by the hyperexcitable neurons (Banic et al., 2004). Indeed, more numerous regions are activated in the brain of fibromyalgia patients by the same intensity of noxious heat stimuli compared to pain-free controls (Cook et al., 2004). Cognitive-behavioral therapy was shown to attenuate nociceptive flexion reflex threshold in FM patients (Ang et al., 2010). On the other hand, subtle peripheral tissue abnormalities, such as increased levels of substance P in muscle tissue, increased IL-1 levels in cutaneous tissue have also been demonstrated in FM patients (for review, see Staud & Rodriguez, 2006). Sympathetic hyperactivity, abnormal heart rate variability, has been postulated in FM patients, which may explain the multisystem features of FM and symptoms such as sleep disorders, anxiety and constant fatigue. Some people assume that FM is a generalized form of reflex sympathetic dystrophy (CRPS type I) (Martinez-Lavin, 2001, 2007). Both conditions affect mostly females and have frequent post-traumatic onset. Moreover, many features of FMS resemble those of posttraumatic stress disorder (PTSD). PTSD is highly associated with FMS in male FMS patients (Amital et al., 2006). Thus, peripheral impulse input may also play an important role in maintaining central sensitization (Staud et al., 2009). But it does not necessarily extensive, because central sensitization seems to require little sustained input for the maintenance of chronic pain state.

Several animal models for FMS or chronic widespread pain have been produced to elucidate the underlying mechanisms. Biogenic amine depletion by repeated administration of reserpine (once daily for 3 consecutive days) caused muscle and cutaneous hyperalgesia, and increased immobility time in forced swim test (Nagakura et al., 2009). Vagal dysfunction induced by subdiaphragmatic vagotomy, caused muscle and visceral, but not cutaneous, hyperalgesia (Furuta et al., 2009). Mice subjected to intermittent cold stress (4°C) exhibited prolonged bilateral allodynia (Nishiyori & Ueda, 2008).

FM is often accompanied by a variety of other symptoms (Bennett et al., 2007; Clauw, 2009; Moldofsky, 2008). Common disorders associated with fibromyalgia include chronic fatigue syndrome (21-80%), irritable bowel syndrome (32-80%), temporomandibular disorder (TMD) (75%), headache (tension/migraine) (10-80%), major depressive disorder (62%), insomnia (60-90%) and urinary disturbance (interstitial cystitis) (20-60%).

Clinical features of chronic pain states, such as FM, low back pain, TMD etc., can be summarized as follows.

1. Patients usually suffer deep tissue (musculo-skeletal) pain and tenderness.
2. Their pain and hyperalgesia is often bilateral and widespread in nature.
3. Their symptoms are aggravated by psychological/emotional stress.
4. They often accompany major depression and sleep disturbance.
5. Their symptoms are often attenuated by anti-depressant (amitriptyline) or anti-convulsant (gabapentin).

We have attempted to discuss possible mechanisms that underlie these symptoms using some animal models of chronic pain states

2.2 Why deep tissues are more frequently affected in chronic pain state?

Brain imaging studies indicate the network of somatosensory (S1, S2, IC), limbic (IC, ACC) and associative structures, such as prefrontal cortex (PFC), receiving parallel inputs from

multiple nociceptive pathways (Apkarian et al., 2005). The clinical pain processing may be different from experimental pain processing, as well as acute pain perception in normal subjects is distinct from that seen in chronic clinical pain conditions. Chronic pain engages brain regions critical for cognitive/emotional assessments (Apkarian et al., 2005; Hsieh et al., 1995). Schweinhardt et al. (2006) revealed that activation patterns of anterior insular cortex (AIC) were different in experimental and clinical pains. They divided the AIC into two parts; rostral AIC (rAIC) and caudal AIC (cAIC). Clinical pain is preferentially processed in rAIC, while experimental pain in healthy volunteers predominantly evoked cAIC. Henderson et al. (2007) compared muscular pain and cutaneous pain, by injecting 5% saline solution into muscle and subcutaneous, respectively. They found that muscular pain evoked more rostral part of the AIC than cutaneous pain did, suggesting that muscular deep pain is more uncomfortable and intractable in nature. These findings may provide us with some important cues to explain why muscular or deep tissue pain easily develops into chronic pain state.

2.3 Mirror-image pain (pain or hyperalgesia in unaffected side or area)

2.3.1 Mirror-image pain in the literature

In the literature, we can find many examples of bilateral hyperalgesia and allodynia due to unilateral neuropathy (Erichsen & Blackburn-Munro, 2002; Li et al., 2006; Yasuda et al., 2005; Yu et al., 1996;), cancer pain (Mao-Ying et al., 2006) or inflammation (Milligan et al., 2003, 2005; Shenker, 2003; Schreiber et al., 2008) in animal models and neuropathic pain (Becerra L et al., 2006; Hatashita et al., 2008; Wasner et al., 2008), capsaicin-induced experimental pain (Shenker et al., 2008) and toothache (Khan et al., 2007) in human cases (for review see Huang and Yu, 2010). An experimental pain induced by unilateral intramuscular injection of low pH saline caused bilateral long-lasting hyperalgesia in rats (Sluka et al., 2001). They speculated that this contralateral spread of hyperalgesia was mediated by central sensitization. Milligan et al. (2003, 2005) produced sciatic inflammatory neuropathy induced by perineural injection of Zymozan to cause localized inflammation of the sciatic nerve of rats (Chacur et al., 2001). It should be noted that these animals showed unilateral (low-dose Zymozan) or bilateral mechanical allodynia (high-dose Zymozan) depending upon the intensity of the sciatic nerve inflammation induced. They also used chronic constriction injury (CCI) model, a classic partial nerve injury, to show a typical bilateral mechanical allodynia. They speculated that mirror-image pain is caused by the spreading of inflammation to the contralateral spinal cord.

2.3.2 A unilateral nerve injury-induced bilateral hyperalgesia

We reported an animal model of unilateral nerve injury-induced bilateral hyperalgesia (Yasuda et al., 2005). In the course of experiments using CCI model rats, we noticed that the nociceptive threshold to mechanical stimulation was decreased bilaterally when the unilateral sciatic nerve was accidentally tightly ligated. We also found that unilateral axotomy of the sciatic nerve exhibited bilateral hyperalgesia. Then we focused our investigation on the axotomy model. The left common sciatic nerve was exposed and tightly ligated at two locations and the sciatic nerve was cut between the ligatures (injured paw). Mechanical nociceptive thresholds were assessed by loading pressure stimulation. The lateral dorsal surface of the injured paws was hypoalgesic, while the medial dorsal paw

(innervated by intact saphenous nerve) on the injured side was hyperalgesic. Hyperalgesia in the injured paw may be mediated by intact saphenous nerve as previously described as adjacent neuropathic hyperalgesia (Markus et al., 1984). To our surprise, dorsal paws on the opposite side also showed hyperalgesia on the day of nerve injury, and these levels were maintained throughout the 14 days of experimental period (Fig. 1).

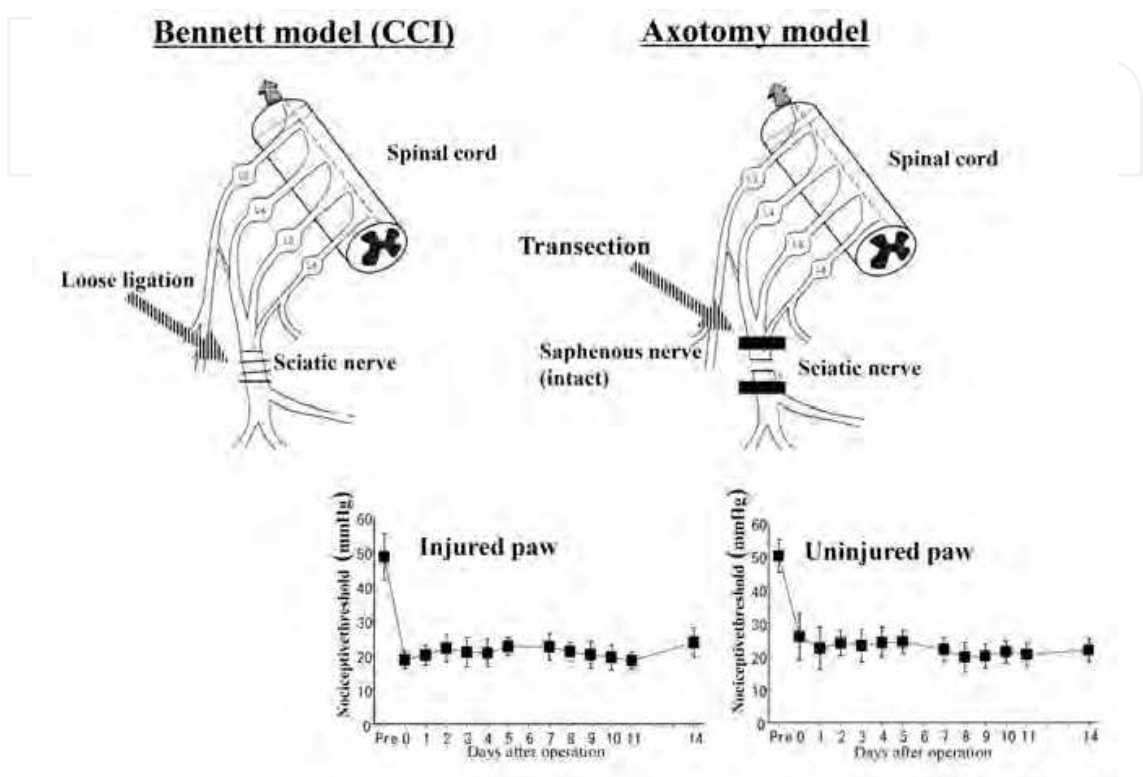


Fig. 1. Bilateral mechanical hyperalgesia observed in unilateral axotomy model rats.

Daily administration of amitriptyline resulted in significant dose-dependent normalization of the nociceptive thresholds in both paws. However, morphine was ineffective. Only the highest dose of morphine was tentatively effective (Fig. 2 A, B). Treatment with gabapentin resulted in significant dose-dependent normalization of the nociceptive thresholds in both paws, while, indomethacin, even at excessive dose was not effective at all (Fig. 2 C, D). Tail-flick latency was reduced at 4 h after axotomy, and it was maintained throughout the experiment, indicating the existence of systemic thermal hyperalgesia. We produced the same model in mice and they also showed bilateral thermal hyperalgesia. The most prominent feature of this axotomy model is bilateral and systemic hyperalgesia in response to pressure and heat, which appeared immediately after transection of the sciatic nerve. In terms of symptoms and drug efficacy, this axotomy model resembles those seen in human patients with neuropathic pain. First, these animals exhibited mechanical and heat hyperalgesia spreading to unaffected areas, which is also observed in various chronic pain conditions in humans. Second, tricyclic amitriptyline and gabapentin, which have been accepted as first-line agents for treatment of neuropathic pain in humans, also attenuated hyperalgesia in this model. We examined the activation of microglia in the ipsi- and contralateral dorsal horn. They were activated more slowly than the appearance of the symptom and got the peak at 1 week after the transaction (Fig. 3).

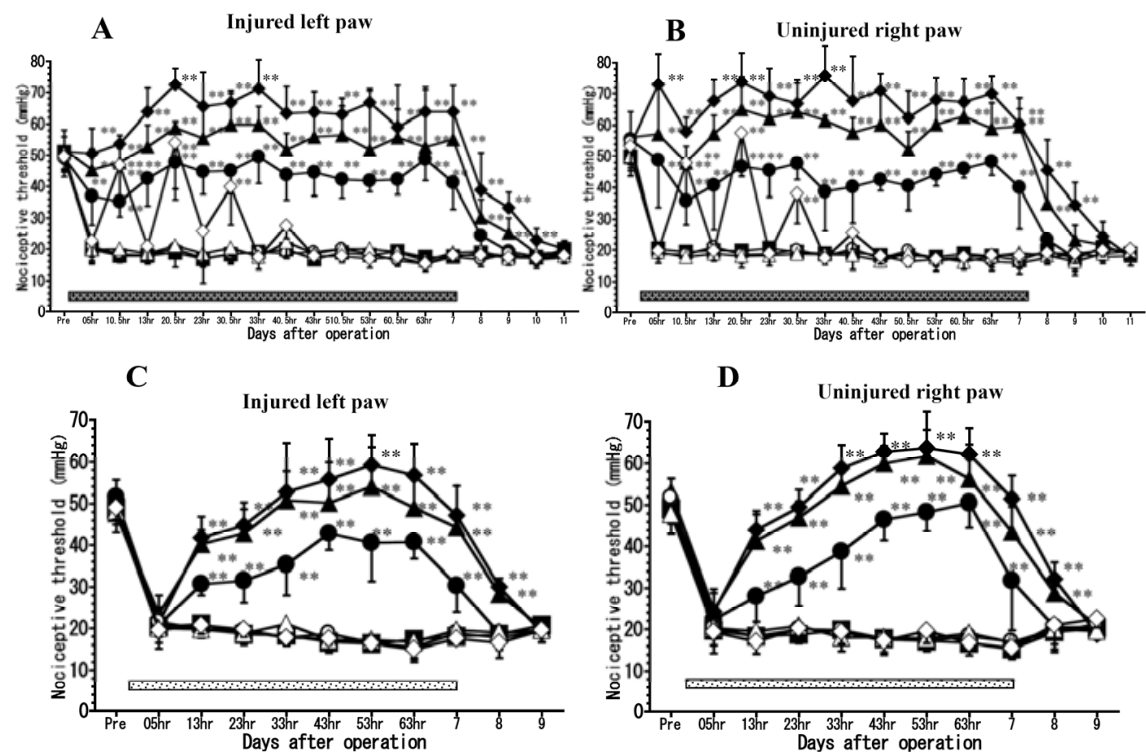


Fig. 2. Inhibitory effects of amitriptyline (A,B) and gabapentin (C,D) on axotomy-induced hyperalgesia. **P<0.01 vs. control, Dunnett’s multiple comparison test.

■: control, amitriptyline ●: 25 mg/kg, p.o. ▲: 50 mg/kg, p.o. ◆: 100 mg/kg, p.o.
morphine ○: 3 mg/kg, s.c. △: 10 mg/kg, s.c. ◇: 30 mg/kg, s.c. (A,B)
gabapentin ●: 30 mg/kg, p.o. ▲: 100 mg/kg, p.o. ◆: 300 mg/kg, p.o.
indomethacin ○: 1 mg/kg, p.o. △: 3 mg/kg, p.o. ◇: 10 mg/kg, p.o.(C,D)

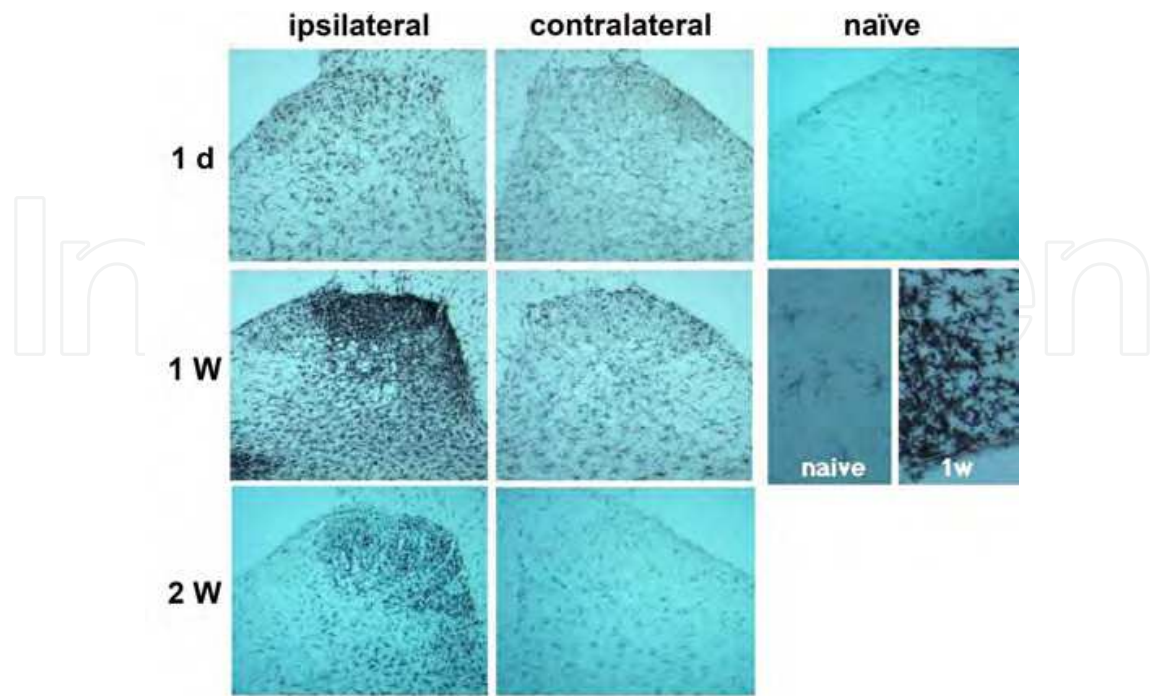


Fig. 3. Activation of microglia (OX-42-positive) in the dorsal horn after sciatic nerve injury.

2.3.3 Possible mechanisms for Mirror-image pain

The underlying mechanisms of Mirror-image pain are still obscure, but sensitization of pain processing in the central nervous system, including the spinal cord and descending pain control system, in addition to peripheral mechanisms, have been postulated.

- 1. Peripheral mechanisms: Contralateral effects may be mediated by circulating factors such as cytokines, chemokines and other chemical mediators, produced in the injured tissue and/or sympatho-adrenal hormones released in response to traumatic stress.
- 2. Spinal mechanisms:
 - #1 Neural theory: Contralateral effects may be mediated by afferent fibers projecting to the contralateral side or interposed interneurons (Koltzenburg et al., 1999). These systems may be silent in normal condition, and remodeling can be triggered by the injury.
 - #2 Immune theory: Contralateral effects may be mediated by immune and glial cells, such as microglia and astrocytes, and chemical mediators derived from these cells may contribute to central sensitization through activating NMDA receptors (DeLeo et al., 2006). However, as far as our axotomy model is concerned, this theory does not seem to fully explain a prominent bilateral hyperalgesia, since only weak microglial activation was observed in the contralateral dorsal horn much later than the appearance of hyperalgesia.

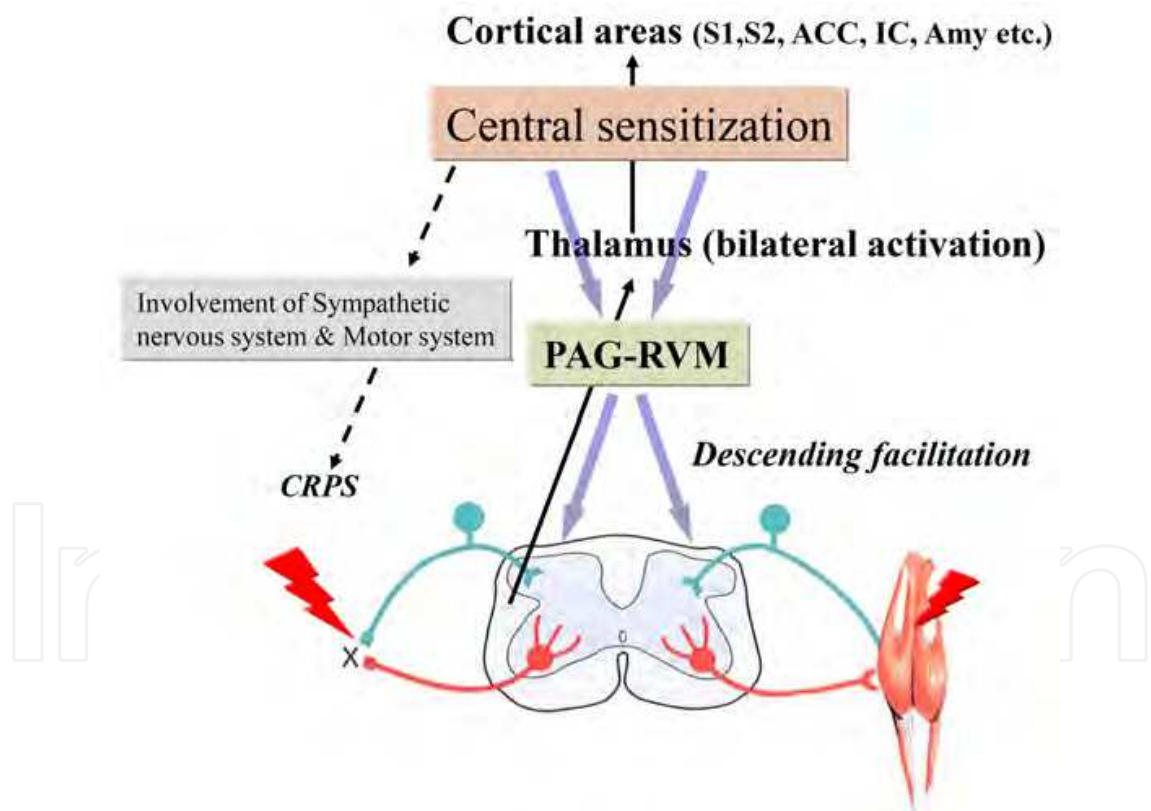


Fig. 4. Central mechanisms of Mirror-image pain.

- 3. Supraspinal mechanisms: Contralateral effects may be mediated by brain activation and descending facilitation in chronic pain state. Persistent noxious inputs from the periphery may sensitize certain brain areas involved in the central pain circuitry, such as ACC, IC and amygdala (Ikeda et al., 2007) (for review, see Meeus & Nijs, 2007). Activation of these areas may cause bilateral hyperalgesia via descending pain control system (Fig. 4).

Central autonomic system and motor system may also be activated and exert their influences on target tissues via visceral and somatic efferent pathways, respectively. Such pathological features may establish a syndrome called CRPS (complex regional pain syndrome) due to peripheral tissue or nerve injury.

As described above, the descending pain modulatory system may lose balance between inhibition and facilitation, turning the balance in favor of facilitation, in pathological pain conditions. There is a growing body of evidence to show that this descending facilitation plays a role in the establishment and maintenance of chronic pain state in various pathological conditions (Fig. 4).

3. How TMD patients exhibit widespread pain and hyperalgesia?

3.1 Clinical features of TMD

TMD patients, as well as those suffering FM or low back pain, often complain of persistent pain in multiple body areas (Turp et al., 1998), and evidence for generalized hyperalgesia in TMD patients has been reported (Sarlanı et al., 2003). The diagnostic criteria for TMD include a pain in the TMJ and associated masticatory muscles such as masseter muscles. Several clinical studies have demonstrated decreased nociceptive threshold in remote areas in TMD patients and suggested a deficit of the endogenous pain inhibitory systems for the pathophysiology of TMD. A deficit of endogenous pain inhibitory systems including diffuse noxious inhibitory control (DNIC), has been suggested also in fibromyalgia patients (Julien et al., 2005). DNIC contributes to enhance the biologically valuable pain signals by reducing other irrelevant noise in the pain transmission system.

3.2 Hyperalgesia in remote areas in a craniofacial pain model

We developed a deep craniofacial pain model that partially mimics symptoms of TMD patients by injecting complete Freund's adjuvant (CFA) into temporomandibular joint (TMJ). Then, the influence of persistent TMJ inflammation on nociceptive responses of remote bodily areas of the rat was investigated (Okamoto et al., 2006a). Von Frey test revealed mechanical hypersensitivity in these rats at 8, 10 and 14 days after CFA injection compared to non-CFA group that had not been treated with CFA. When formalin was injected into the left hindpaw, these rats showed significantly enhanced nocifensive behavior at 10 and 14 days after CFA injection compared to non-CFA control group. The numbers of Fos-positive neurons in the ipsilateral lumbar dorsal horn were also significantly increased compared to those in non-CFA group. These findings clearly indicate that persistent TMJ inflammation may enhance nociceptive perception and nocifensive behavior in remote bodily areas.

3.3 Descending facilitation mediated by 5-HT and 5-HT₃ receptors

It is well known that 5-HT plays important roles in modulating spinal nociceptive transmission. Activation of the descending serotonergic bulbospinal system modulates responses of dorsal horn neurons to noxious stimuli. Spinal cord dorsal horn as well as trigeminal subnucleus caudalis (Vc) are the major sites of 5-HT released from descending fibers from the RVM. However, controversy remains as to which types of 5-HT receptor are involved in mediating serotonergic pronociceptive or anti-nociceptive effects in this system. Nociceptive transmission in the spinal cord is modulated by the nucleus raphe magnus (NRM) and adjacent structures of the rostral ventromedial medulla (RVM). The RVM

receives projections from the periaqueductal gray matter (PAG) and sends projections to the spinal dorsal horn largely along the dorsolateral funiculus. The NRM is a major source of the descending serotonergic pathways that participate in spinal nociceptive modulation. These descending serotonergic pathways exert bi-directional control of nociception. We further demonstrated that 5-HT₃ receptors play a role in descending facilitation from the RVM to spinal dorsal horn.

In the next experiment, we injected formalin into masseter muscle in rats suffering persistent TMJ inflammation. By means of electrophysiology, we showed exaggerated responses of WDR neurons in the Vc/C2 (trigeminal subnucleus caudalis/ upper cervical spinal junction) region, and these responses were attenuated when 5-HT₃ receptors were blocked (Okamoto et al., 2005b). By extracellular recordings in the Vc/C2 region, we identified two types of units; Deep-wide dynamic range (WDR) units and Skin-WDR units. Deep-WDR units have mechanoreceptive fields in the deep craniofacial tissues including masseter muscle but do not have cutaneous mechanoreceptive fields. As shown in previous studies, formalin-induced neural activities in the dorsal horn and trigeminal caudalis neurons showed a biphasic time course that is similar to that of formalin-induced behavior. Deep-WDR unit discharges evoked by the formalin injection into masseter muscle were significantly enhanced in the late phase in CFA-injected day 7 group. Discharges of Skin-WDR units evoked by the noxious pinch stimulation to facial skin in CFA-injected day 7 group were also significantly enhanced compared with those in non-CFA-injected group. Topical administration of central 5-HT₃ receptor antagonist, tropisetron, onto trigeminal Vc/C2 region significantly reduced both formalin-evoked Deep-WDR unit and pinch-evoked Skin-WDR unit discharges in non-CFA and CFA day 7 groups (Fig. 5).

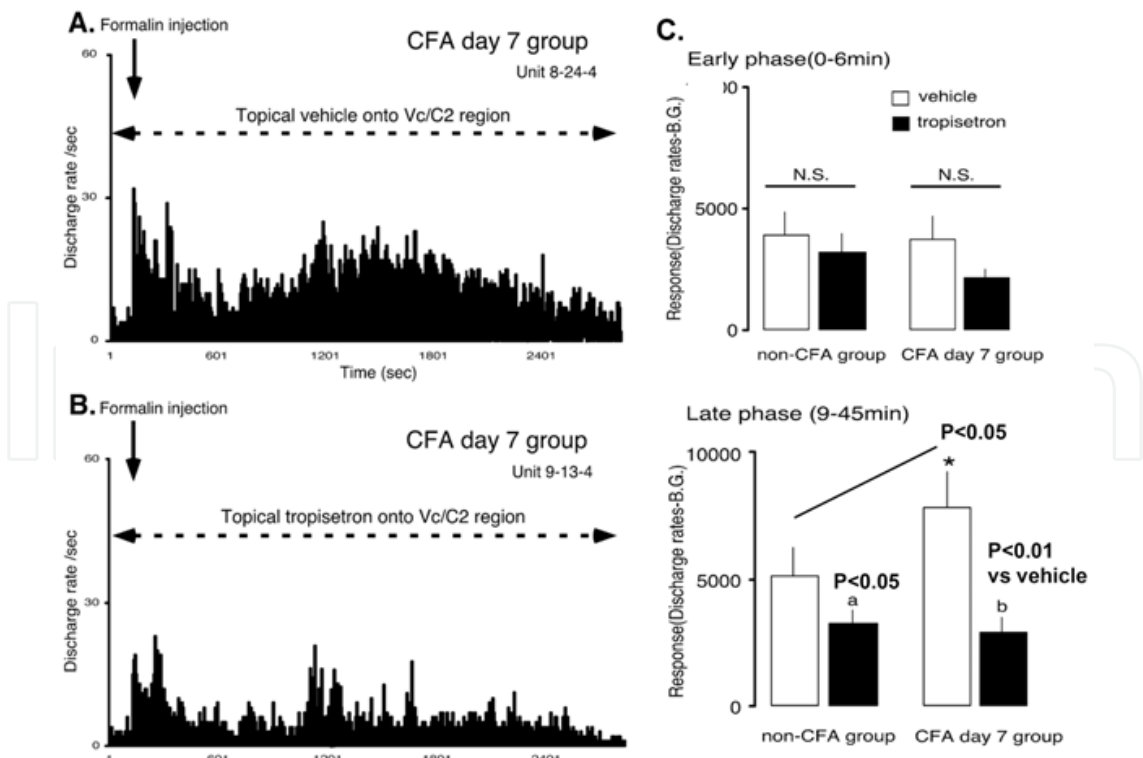


Fig. 5. The effects of topical application of tropisetron onto the Vc/C2 region on the early and late phases of Deep-WDR unit responses evoked by formalin injection.

Therefore, it is concluded that 5-HT derived from descending fibers from the RVM activated spinal/trigeminal dorsal horn neurons via 5-HT₃ receptors and facilitated pain behavior (Okamoto et al., 2005b). Recently, Wei et al. (2010) showed the essential role of 5-HT in this system in pathological pain conditions by selectively blocking 5-HT production in the RVM. As for 5-HT_{2A} receptors, we demonstrated that this receptor subtype is involved in the suppression of nociceptive processing and behavior using the deep craniofacial pain model (Okamoto et al., 2007). Most of 5-HT_{2A} receptor-immunoreactive neurons in the superficial Vc/C2 region were glutamic acid decarboxylase (GAD)-positive, i.e. inhibitory interneurons (unpublished observation of K.O.). On the other hand, the majority (about 87%) of 5-HT₃ receptor-immunoreactive dorsal horn axons seem to be derived from GAD-negative, presumably excitatory interneurons (Maxwell et al., 2003). Therefore, 5-HT_{2A} and 5-HT₃ receptor subtypes may exert opposite influences on pain transmission in the dorsal horn (Fig. 6), while we have shown, in the periphery at the level of sensory nerve terminals, these two receptors potentiate hyperalgesia in pathological conditions (Okamoto et al., 2004, 2005a, 2006b). 5-HT_{2A} receptors are exclusively involved in the potentiation of inflammatory pain (Okamoto et al., 2002).

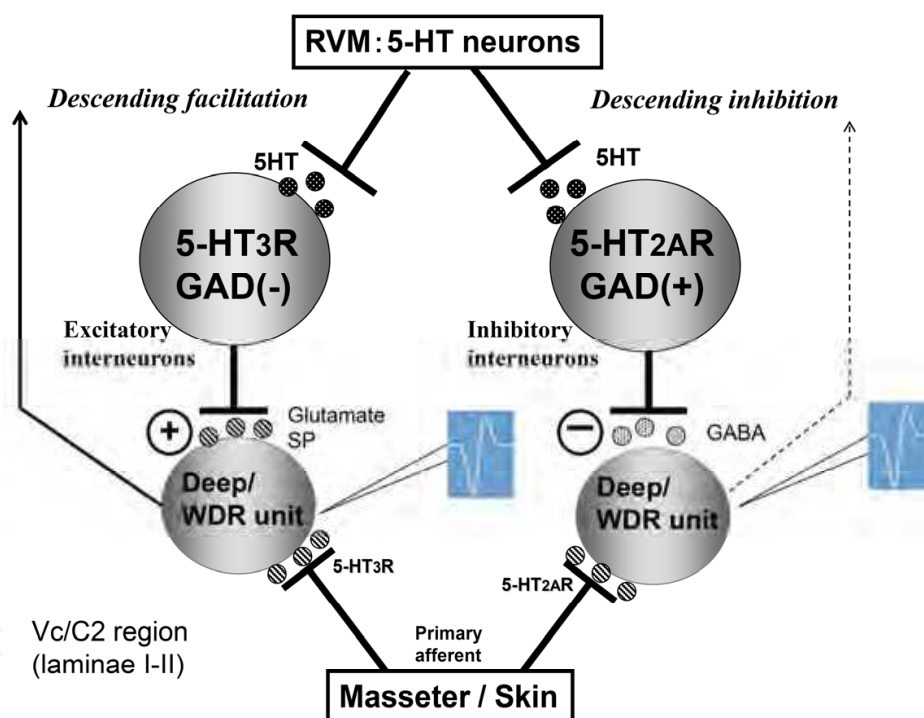


Fig. 6. Descending facilitation and inhibition differentially mediated via 5-HT₃ receptor and 5-HT_{2A} receptor expressing interneurons in the dorsal horn.

4. How is chronic pain state aggravated by stress?

4.1 Stress-induced analgesia and hyperalgesia

Acute stress is generally considered to suppress pain, which is called stress-induced analgesia (SIA). We usually feel less pain when we are injured in a battle or in a sport game. On the other hand, repeated exposure to non-noxious situation, such as chronic restraint stress, forced swim stress, cold environment or social defeat, can elicit hyperalgesia and allodynia in experimental animals (for review, see Imbe et al., 2006). It is well known that

chronic psychoemotional stress and anxiety enhance pain sensitivity in human (Ashkinazi & Vershinina, 1999; Rhudy & Meagher, 2000). Stress has also been found to exacerbate and could contribute to the etiology of chronic painful disorders, such as, fibromyalgia (Clauw, 2009; Wood, 2004), low back pain (Pincus et al., 2002), irritable bowel syndrome (Delvaux, 1999), rheumatoid arthritis (Herrmann et al., 2000) and headache (Nash & Theborge, 2006).

A variety of environmental and/or psychological stressful stimuli have been shown to affect pain sensitivity. Some kinds of acute stress and most of chronic stress increase pain sensitivity. These phenomena are termed stress-induced hyperalgesia (SIH) (Imbe et al., 2006). Acute exposure to emotionally arousing non-noxious stress, such as inescapable holding, novel environments or vibration, produces an immediate and transient hyperalgesia (Jorum, 1988; Vidal & Jacob, 1982).

A line of evidence suggests that chronic stress induced by repeated exposure to cold environment (Satoh et al., 1992), restraint (Gameiro et al., 2005, 2006; Imbe et al., 2004) and forced swim (Quintero et al., 2000, 2003; Suarez-Roca et al., 2008) also produces relatively persistent hyperalgesia, which seems to mimic the human chronic pain condition. For example, chronic restraint stress (1h daily for 4 days) produced mechanical allodynia and hyperalgesia in formalin test in rats (Bardin et al., 2009). Repeated swim stress (10-20 min daily for 3 consecutive days) induced hyperalgesic responses to formalin injection into hindpaw and increased c-Fos expression in the spinal dorsal horn compared to those observed in naïve rats or rats subjected to sham stress (Quintero et al., 2003). Repeated cold stress (4°C or -3°C for 5 days) induced bilateral deep mechanical hyperalgesia in rats (Nasu et al., 2010). Although in these animal models dysfunctions of several neurotransmitter systems have been shown pharmacologically to be involved in SIH, the responsible neural circuits remain elusive.

4.2 Proposed mechanisms for stress-induced hyperalgesia

There may be two hypotheses to explain the mechanisms of stress-induced hyperalgesia; one is peripheral theory and the other is central theory. Water avoidance stress model, a psychological stress, induced muscle hyperalgesia and increased muscle nociceptor activity, including increased action potentials and conduction velocity (Chen et al., 2011). These authors speculated that these peripheral mechanisms may contribute to the stress-induced chronic widespread pain, like fibromyalgia, and supported peripheral theory. Repeated sound stress also activates hypothalamo-pituitary-adrenal and sympathoadrenal axes, and enhances mechanical hyperalgesia induced by inflammatory mediators. The released glucocorticoids and catecholamines cause long lasting alterations in intracellular signal pathways in primary afferent nociceptor (Khasar et al., 2005, 2008, 2009). Spinal mechanism, i.e. reduced γ -aminobutyric acid (GABA) release in the dorsal horn of rats subjected to repeated forced swim stress is also implicated in the SIH (Suarez-Rosa et al., 2008). As central mechanisms of SIH, descending pain modulatory system from the RVM to the spinal dorsal horn may play a key role. Initially this system was considered to be solely inhibitory (Basbaum & Fields, 1984). However, it gradually became evident that this descending system from the RVM exerts bidirectional (facilitatory and inhibitory) control of nociception (Porreca et al., 2002; Ren & Dubner, 2002). Many studies have reported the participation of descending facilitatory input from the RVM in inflammatory and neuropathic pain conditions. Recent studies have demonstrated that inflammatory (Sugiyo et al., 2005), neuropathic (Burgess et al., 2002), cancer (Donovan-Rodriguez et al., 2006) and visceral pains (Vera-Portocarrero et al., 2006) are linked to the activation of descending facilitatory pathway from the RVM. Burgess et al. (2002) showed that this system maintains, but does not

initiate, neuropathic pain. At the cellular level, both on- and off-cells, but not neutral cells, in the RVM are sensitized to mechanical stimuli after nerve injury (Carlson et al., 2007). As to the contribution of the RVM to stress-induced pain modulation, previous studies have shown that the RVM is involved in SIA (Foo & Helmstetter, 2000; Mitchell et al., 1998). Balance between inhibition and facilitation may determine the outcome effects of stress on pain behaviors.

4.3 Descending facilitation in chronic stress and chronic pain state

We have examined possible involvement of descending facilitation in chronic stress-induced hyperalgesia. Briefly, rats were stressed by restraint daily for 6 h. In the acute stress model, they were exposed to a single restraint. In the chronic stress model, they were repeatedly exposed to daily restraint for 1, 2 or 3 weeks. The control group was not subjected to restraint. Tail-flick latency (TFL) and activation of extracellular signal-regulated kinases (ERK) in the RVM were assessed. Acute restraint stress (6 h, 1 day) obviously increased TFLs. Conversely, chronic restraint stress (6 h/day, 2- or 3-week) caused a reduction in TFLs (Fig. 7). Only a few phosphorylated-ERK (p-ERK)-immunoreactive (IR) neurons were observed in the RVM of the control and acutely restraint rats, but 3-week restraint stress produced robust increase in p-ERK-IR in the RVM (Fig. 8). On the other hand, c-Fos expression was increased only in the brain of acutely stressed animals. C-Fos response was dramatically decreased when stressful stimuli were repeated as we have shown previously (Senba & Ueyama, 1997; Umemoto et al., 1996).

Especially 3-week restraint stress induced about 60% increase in the number of p-ERK-IR neurons in the RVM, compared to the control rats. Since about 20% of the total RVM neurons are serotonergic, we examined immunohistochemical colocalization of p-ERK and 5HT. The majority of p-ERK-IR neurons also expressed 5HT-IR. The incidence of p-ERK-IR in RVM 5-HT neurons was doubled after 3-weeks of restraint (30.2%) compared to control rats (14.2%). Western blot analysis showed that the level of TPH in the 3-week restraint rats was significantly increased (130%, n=4) compared to that in the control rats (100%, n=4, P<0.05) (Fig. 9) (Imbe et al., 2004).

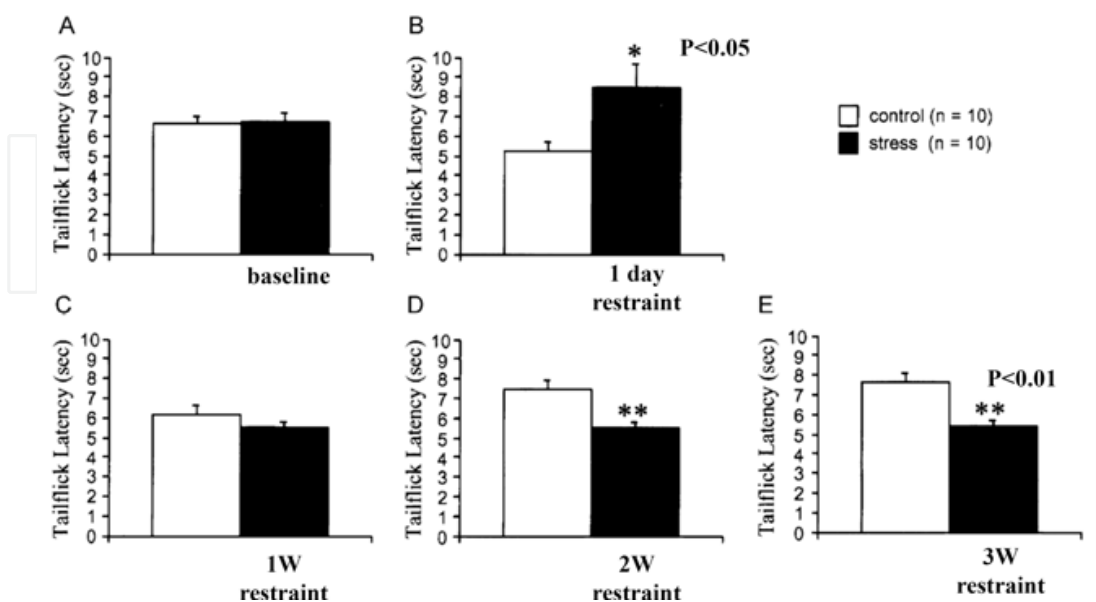


Fig. 7. Effects of acute and chronic restraint stress on tailflick latencies, showing stress-induced analgesia (acute) and stress-induced hyperalgesia (chronic).

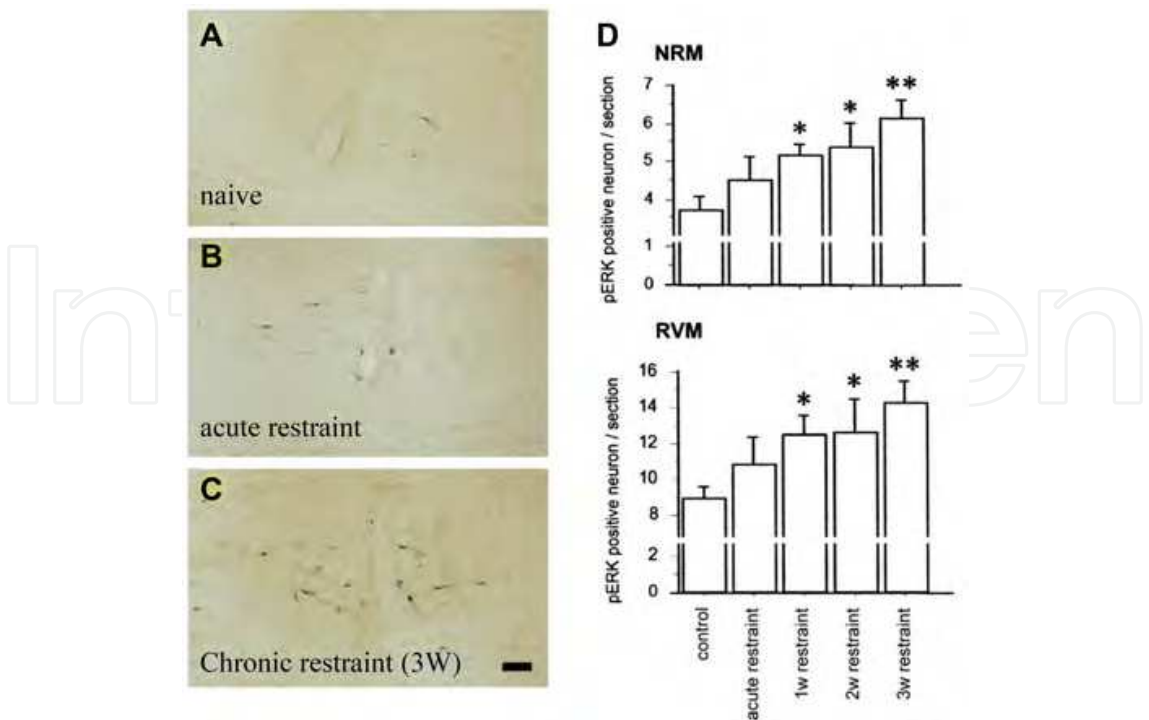


Fig. 8. Numbers of p-ERK-positive neurons in the RVM in control and stressed rats.

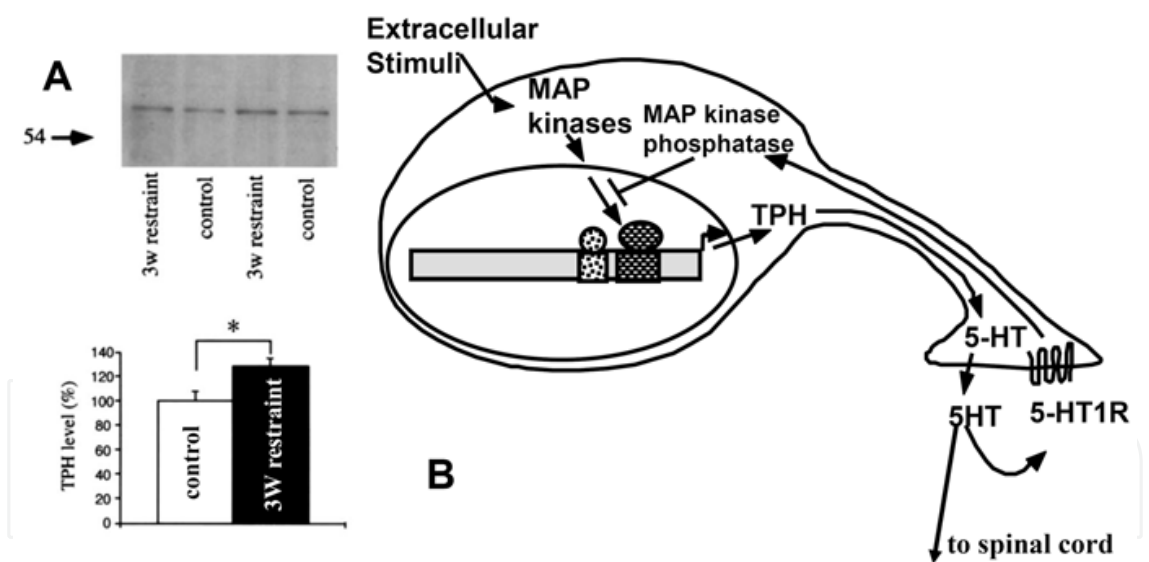


Fig. 9. Effects of 3-week restraint stress on the level of TPH (A). Activation of ERK may increase the transcription of TPH in 5-HT producing RVM neurons (B).

We have previously showed that activation of ERK in the RVM is involved in thermal hyperalgesia during peripheral inflammation (Imbe et al., 2005, 2008, 2011). We also showed that microinjection of MEK inhibitor, U0126, into the RVM attenuated the hyperalgesia due to CFA-induced peripheral inflammation. Recently it has been demonstrated that activation of ERK in the RVM also contributes to persistent neuropathic pain (Geranton et al., 2010). Under the special condition of chronic restraint stress, persistent ERK activation induced by chronic stress may increase the transcription of tryptophan hydroxylase (TPH), a rate-

limiting enzyme in serotonin biosynthesis (Wood & Russo, 2001), leading to central sensitization of dorsal horn neurons via descending serotonergic facilitatory projection (Fig. 9). Moreover, in the same study we observed p-ERK-immunoreactivity was dramatically decreased in the locus coeruleus (LC) of chronically stressed animals (Imbe et al., 2004), suggesting that descending noradrenergic inhibition to the spinal dorsal horn is decreased. This may also contribute to the chronic stress-induced hyperalgesia.

We showed another example of stress-induced hyperalgesia and enhancement of pain behavior, in which rats were subjected to forced swim stress for 3 days (Imbe et al., 2010). These animals showed prolonged nocifensive behavior in Formalin test. The destruction of the RVM with ibotenic acid almost completely prevented the enhancement of formalin-evoked nocifensive behavior following the forced swim stress (Fig. 10).

As a summary, chronic restraint stress induced thermal hyperalgesia in rats (Imbe et al., 2004), in which p-ERK and levels of TPH were increased in the RVM. 5HT released from the bulbospinal neurons may exert facilitatory effects on spinal nociceptive processing probably through 5HT₃ receptors (Okamoto et al., 2005b; Suzuki et al., 2002, 2004). We also demonstrated that descending facilitation from the RVM is required for the enhancement of formalin-evoked nocifensive behavior following repeated forced swim stress (Imbe et al., 2010). These findings clearly indicate that stress-induced brain sensitization may aggravate pain and hyperalgesia, through PAG-RVM pathway. Molecular and cellular mechanisms of stress-induced central sensitization are still obscure, but it has been demonstrated that chronic stress induces dendritic remodeling of cortical (Radley et al., 2004), hippocampal and amygdaloid neurons (Vyas et al., 2002).

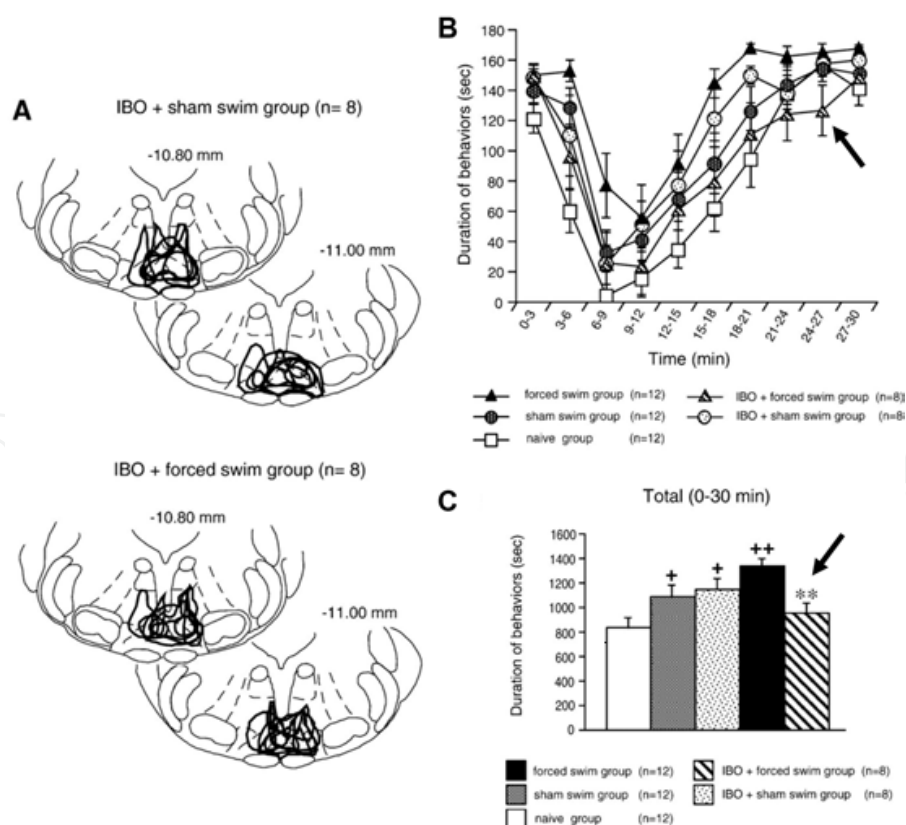


Fig. 10. Destruction of the RVM with ibotenic acid (IBO) (A) blocks the enhancement of formalin-evoked nocifensive behavior in rats subjected to forced swim stress (arrows in B, C).

Now it is obvious that PAG-RVM-spinal (or trigeminal) dorsal horn system is a final common pathway for descending pain modulatory system. A line of experimental evidence suggests that the RVM is a target of descending fibers from upper brain regions to induce SIH. The dorsomedial nucleus of the hypothalamus (DMH) plays important roles in mediating neuroendocrine, cardiovascular and thermogenic responses to emotional stressor. Activation (disinhibition) of the DMH induced a robust activation of ON-cells, suppression of OFF-cells in the RVM and behavioral hyperalgesia in rats (Martenson et al., 2009). Other brain regions that are critical to emotional processes, such as amygdala, lateral hypothalamus, ACC and PFC, also modulate nociceptive behavior by affecting the activity of RVM (Calejesan et al., 2000; Holden and Pizzi, 2008; Hutchison et al., 1996; McGaraughty & Heinricher, 2002; McGaraughty et al., 2004).

Thus, brain activation due to chronic emotional stress in addition to persistent pain in the peripheral tissue may add widespread nature to the chronic pain state. In the situations where threats are repeated, a shift towards descending facilitation of pain may be required to enhance vigilance in order to ensure survival.

5. Plastic changes in the ACC and chronic persistent pain

5.1 Mechanisms of central sensitization

Central sensitization has been defined as “an enhanced responsiveness of nociceptive neurons in the CNS to their normal afferent input” by the International Association for the Study of Pain (IASP). Synaptic plasticity in the cortex as well as in the spinal dorsal horn is believed to be important for the amplification of painful information in chronic pain conditions. The ACC is found to be a key area that links various noxious and painful stimuli to emotional responses. Central sensitization of this area may lead to chronic pain, as well as pain-related cognitive emotional disorders.

There are two major mechanisms that contribute to central plasticity: first, it is well known that LTP, which includes postsynaptic glutamate receptors, such as NMDA and AMPA receptors, and downstream signaling molecules, various kinds of kinases, increased presynaptic glutamate release, provides basic neural mechanism for learning, memory, and chronic pain (Sandkuhler, 2007). The mechanisms of LTP in the ACC have been extensively studied (Kim et al., 2010; Zhuo, 2007, 2008). Second, decreased inhibitory mechanisms by GABA may also contribute to the central sensitization. Recently it has been clearly demonstrated that under neuropathic pain conditions, membrane-bound GABA transporter-3 (GAT-3) on activated astrocytes were significantly increased in the ACC, leading to a decrease in extracellular GABA levels and an increase in neuronal activation in this area (Narita et al., 2011). These long-term synaptic changes help the brain to recognize the changing environment, to gain the ability to respond properly to it and avoid danger in the future. However, in the case of permanent injury, brain fails to distinguish acute physiological pain and chronic pathological pain, and respond similarly, subjecting us to useless, only harmful exaggerated pain state.

5.2 Mechanisms of insomnia in chronic pain patients

One of the common complaints and sufferings of people with chronic pain, including FM, is insomnia (Moldofsky, 2008; O'Brien et al., 2010). Cortical GABAergic neurons play important roles in sleep/wake regulation (Gottesmann, 2004; Kilduff et al., 2011), and

disturbance of this system may lead to the pathogenesis of insomnia in these patients. In the experimental model mice for neuropathic pain, an increase in wakefulness and a decrease in non-rapid eye movement sleep during day time, in which mice are supposed to be drowsy or sleeping, have been demonstrated by means of EEG analysis (Takemura et al., 2011). Under these conditions, as mentioned above, GAT-3 on activated astrocytes were increased in the ACC, and extracellular GABA levels in this area after depolarization were rapidly decreased (Narita et al., 2011). Furthermore, sleep disturbance induced by sciatic nerve ligation was improved by the intra-cingulate cortex injection of a GAT-3 inhibitor. These findings provide novel evidence that sciatic nerve ligation decreases extracellular-released GABA in the ACC of mice, which may, at least in part, explain the insomnia in patients with neuropathic pain. On the other hand, it should be noted that sleep disturbance, i.e. REM deprivation, itself may reduce pain threshold (Hakki Onen, 2001).

5.3 Treatment of chronic pain with gabapentin

Recently brain hyperactivity in neuropathic pain model mice in response to painful thermal stimulation has been examined using functional MRI (fMRI) (Takemura et al., 2011). Compared to sham-operated animals, exaggerated BOLD signals in the brain regions, such as the S1, ACC and medial/lateral thalamus, of animals subjected to nerve ligation were observed. Injection of gabapentin (GBP) (60 mg/kg, i.p.) dramatically reduced the nerve injury-induced brain hyperactivity. At the same time, thermal hyperalgesia these animals showed was also normalized by GBP. Changes in EEG patterns identified in these mice during light phase were also attenuated by GBP treatment (Takemura et al., 2011).

The site of action of GBP is still obscure, although GBP was shown to block the function of voltage-gated calcium channels (VGCCs), by binding to the $\alpha 2\delta$ -1 subunits. VGCCs play an essential role in controlling neurotransmitter release, neuronal excitability, and gene expression in the nervous system. In VGCCs, $\alpha 1$ subunit harbors the channel pore and gating machinery, while accessory subunits, $\alpha 2\delta$ -1, affect channel kinetics, contributing to the trafficking and insertion of main $\alpha 1$ subunit into the membrane.

One of the possible sites of action of GBP is spinal dorsal horn, in which $\alpha 2\delta$ -1 subunits are expressed on the primary afferent terminals (Li C-Y et al., 2004). Supraspinal hypothesis has also been postulated. GBP may inhibit the release of GABA, and disinhibition of LC neurons may potentiate descending inhibition (Tanabe et al., 2008). There may be numerous candidates for possible sites of action of GBP, since $\alpha 2\delta$ -1 subunit mRNAs are widely distributed in supraspinal pain-related areas, in addition to DRG and spinal dorsal horn (Cole et al., 2005). Indeed, GBP has marked positive and negative effects on BOLD signal intensity in a number of pain-related supraspinal areas (Governo et al., 2008), supporting its well-described analgesic effects both in animal models and patients of chronic pain states.

6. Conclusion

1. Mirror-image pain and stress-induced hyperalgesia may be induced by central sensitization and subsequent descending facilitation.
2. Brain hyperactivation, systemic pain and sleep disturbance were attenuated by gabapentin. Central sensitization could be a treatment target in patients suffering chronic widespread pain, such as fibromyalgia.

7. References

- Amital, D., Fostick, L., Polliack, M.L., Segev, S., Zohar, J., Rubinow, A. & Amital, H. Posttraumatic stress disorder, tenderness, and fibromyalgia syndrome: are they different entities? *J Psychosom Res.* 2006 Nov; 61(5):663-669.
- Ang DC, Chakr R, Mazzuca S, France CR, Steiner J, Stump T. Cognitive-behavioral therapy attenuates nociceptive responding in patients with fibromyalgia: a pilot study. *Arthritis Care Res (Hoboken).* 2010 May;62(5):618-23.
- Apkarian, A.V., Bushnell, M.C., Treede, R.D. & Zubieta, J.K. Human brain mechanisms of pain perception and regulation in health and disease. *Eur J Pain.* 2005 Aug; 9(4):463-484.
- Ashkinazi, I.Ya. & Vershinina, E.A. Pain sensitivity in chronic psychoemotional stress in humans. *Neurosci Behav Physiol* 1999; 29:333-337.
- Banic, B., Petersen-Felix, S., Andersen, O.K., Radanov, B.P., Villiger, P.M., Arendt-Nielsen, L. & Curatolo, M. Evidence for spinal cord hypersensitivity in chronic pain after whiplash injury and in fibromyalgia. *Pain.* 2004 Jan; 107(1-2):7-15.
- Bardin, L., Malfetes, N., Newman-Tancredi, A. & Depoortère, R. Chronic restraint stress induces mechanical and cold allodynia, and enhances inflammatory pain in rat: Relevance to human stress-associated painful pathologies. *Behav Brain Res.* 2009 Dec ; 205(2):360-366.
- Basbaum, A.I. & Fields, H.L. Endogenous pain control systems: brainstem spinal pathways and endorphin circuitry. *Annu Rev Neurosci* 1984; 7:309-338.
- Becerra, L., Morris, S., Bazes, S., Gostic, R., Sherman, S., Gostic, J., Pendse, G., Moulton, E., Scrivani, S., Keith, D., Chizh, B. & Borsook, D. Trigeminal neuropathic pain alters responses in CNS circuits to mechanical (brush) and thermal (cold and heat) stimuli. *J Neurosci.* 2006 Oct ;26(42):10646-10657.
- Bennett, R.M., Jones, J., Turk, D.C., Russell, I.J. & Matallana, L. An internet survey of 2,596 people with fibromyalgia. *BMC Musculoskelet Disord.* 2007 Mar; 8:27.
- Burgess, S.E., Gardell, L.R., Ossipov, M.H., Malan, T.P. Jr, Vanderah, T.W., Lai, J. & Porreca, F. Time-dependent descending facilitation from the rostral ventromedial medulla maintains, but does not initiate, neuropathic pain. *J Neurosci.* 2002 Jun; 22(12):5129-5136.
- Calejesan, A.A., Kim, S.J. & Zhuo, M. Descending facilitatory modulation of a behavioral nociceptive response by stimulation in the adult rat anterior cingulate cortex. *Eur J Pain.* 2000; 4(1):83-96.
- Carlson, J.D., Maire, J.J., Martenson, M.E. & Heinricher, M.M. Sensitization of pain-modulating neurons in the rostral ventromedial medulla after peripheral nerve injury. *J Neurosci.* 2007 Nov; 27(48):13222-13231.
- Chacur, M., Milligan, E.D., Gazda, L.S., Armstrong, C., Wang, H., Tracey, K.J. & Maier, S.F. Watkins LR. A new model of sciatic inflammatory neuritis (SIN): induction of unilateral and bilateral mechanical allodynia following acute unilateral peri-sciatic immune activation in rats. *Pain.* 2001 Dec; 94(3):231-244.
- Chen, X., Green, P.G. & Levine, J.D. Stress enhances muscle nociceptor activity in the rat. *Neuroscience.* 2011 Jun; 185:166-173.
- Clauw, D.J. Fibromyalgia: an overview. *Am J Med.* 2009 Dec; 122(12 Suppl):S3-S13.
- Cole, R.L., Lechner, S.M., Williams, M.E., Prodanovich, P., Bleicher, L., Varney, M.A. & Gu, G. Differential distribution of voltage-gated calcium channel alpha-2 delta ($\alpha 2\delta$) subunit mRNA-containing cells in the rat central nervous system and the dorsal root ganglia. *J Comp Neurol.* 2005 Oct; 491(3):246-269.

- Cook, D.B., Lange, G., Ciccone, D.S., Liu, W.C., Steffener, J. & Natelson, B.H. Functional imaging of pain in patients with primary fibromyalgia. *J Rheumatol*. 2004 Feb; 31(2):364-378.
- De Leo, J.A., Tawfik, V.L. & LaCroix-Fralish, M.L. The tetrapartite synapse: path to CNS sensitization and chronic pain. *Pain*. 2006 May; 122(1-2):17-21.
- Delvaux, M.M. Stress and visceral perception. *Can. J. Gastroenterol*. 1999; 13 Suppl A: 32A-36A.
- Donovan-Rodriguez, T., Urch, C.E. & Dickenson, A.H. Evidence of a role for descending serotonergic facilitation in a rat model of cancer-induced bone pain. *Neurosci Lett*. 2006 Jan; 393(2-3):237-242.
- Erichsen, H.K. & Blackburn-Munro, G. Pharmacological characterisation of the spared nerve injury model of neuropathic pain. *Pain*. 2002 Jul; 98(1-2):151-161.
- Foo, H. & Helmstetter, F.J.. Activation of kappa opioid receptors in the rostral ventromedial medulla blocks stress-induced antinociception. *Neuroreport*. 2000 Oct; 11(15):3349-3352.
- Furuta, S., Shimizu, T., Narita, M., Matsumoto, K., Kuzumaki, N., Horie, S., Suzuki, T. & Narita, M. Subdiaphragmatic vagotomy promotes nociceptive sensitivity of deep tissue in rats. *Neuroscience*. 2009 Dec; 164(3):1252-1262.
- Gameiro, G.H., Andrade Ada, S., de Castro, M., Pereira, L.F., Tambeli, C.H. & Veiga, M.C. The effects of restraint stress on nociceptive responses induced by formalin injected in rat's TMJ. *Pharmacol Biochem Behav*. 2005 Oct; 82(2):338-344.
- Gameiro, G.H., Gameiro, P.H., Andrade Ada, S., Pereira, L.F., Arthuri, M.T., Marcondes, F.K. & Veiga, M.C. Nociception- and anxiety-like behavior in rats submitted to different periods of restraint stress. *Physiol Behav*. 2006 Apr; 87(4):643-649.
- Géranton, S.M., Tochiki, K.K., Chiu, W.W., Stuart, S.A. & Hunt, S.P. Injury induced activation of extracellular signal-regulated kinase (ERK) in the rat rostral ventromedial medulla (RVM) is age dependant and requires the lamina I projection pathway. *Mol Pain*. 2010 Sep; 6:54.
- Gottesmann, C. Brain inhibitory mechanisms involved in basic and higher integrated sleep processes. *Brain Res Brain Res Rev*. 2004 Jul; 45(3):230-249.
- Governo, R.J., Morris, P.G., Marsden, C.A. & Chapman, V. Gabapentin evoked changes in functional activity in nociceptive regions in the brain of the anaesthetized rat: an fMRI study. *Br J Pharmacol*. 2008 Apr; 153(7):1558-1567.
- Hakki Onen S, Alloui A, Jourdan D, Eschaliere A, Dubray C. Effects of rapid eye movement (REM) sleep deprivation on pain sensitivity in the rat. *Brain Res*. 2001 May; 900(2):261-267.
- Hatashita, S., Sekiguchi, M., Kobayashi, H., Konno, S. & Kikuchi, S. Contralateral neuropathic pain and neuropathology in dorsal root ganglion and spinal cord following hemilateral nerve injury in rats. *Spine (Phila Pa 1976)*. 2008 May; 33(12):1344-1351.
- Henderson, L.A., Gandevia, S.C. & Macefield, V.G. Somatotopic organization of the processing of muscle and cutaneous pain in the left and right insula cortex: a single-trial fMRI study. *Pain*. 2007 Mar; 128(1-2):20-30.
- Herrmann, M., Schölmerich, J. & Straub, R.H. Stress and rheumatic diseases. *Rheum Dis Clin North Am*. 2000 Nov; 26(4):737-763, viii.
- Holden, J.E. & Pizzi, J.A. Lateral hypothalamic-induced antinociception may be mediated by a substance P connection with the rostral ventromedial medulla. *Brain Res*. 2008 Jun; 1214:40-49.
- Hsie, J.C., Belfrage, M., Stone-Elander, S., Hansson, P. & Ingvar, M. Central representation of chronic ongoing neuropathic pain studied by positron emission tomography. *Pain*. 1995 Nov; 63(2):225-236.

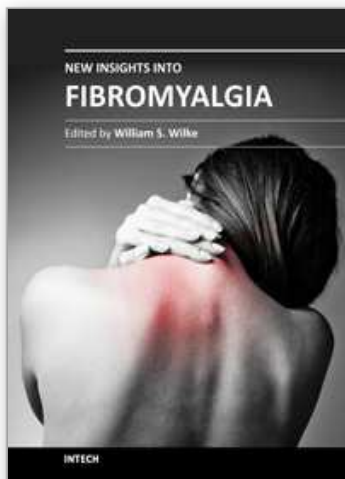
- Ikeda, R., Takahashi, Y., Inoue, K. & Kato, F. NMDA receptor-independent synaptic plasticity in the central amygdala in the rat model of neuropathic pain. *Pain*. 2007 Jan; 127(1-2):161-172.
- Huang, D. & Yu, B. The mirror-image pain: an uncured phenomenon and its possible mechanism. *Neurosci Biobehav Rev*. 2010 Mar; 34(4):528-532.
- Hutchison, W.D., Harfa, L. & Dostrovsky, J.O. Ventrolateral orbital cortex and periaqueductal gray stimulation-induced effects on on- and off-cells in the rostral ventromedial medulla in the rat. *Neuroscience*. 1996 Jan;70(2):391-407.
- Imbe, H., Murakami, S., Okamoto, K., Iwai-Liao, Y. & Senba, E. The effects of acute and chronic restraint stress on activation of ERK in the rostral ventromedial medulla and locus coeruleus. *Pain*. 2004 Dec; 112(3):361-371.
- Imbe, H., Okamoto, K., Okamura, T., Kumabe, S., Nakatsuka, M., Aikawa, F., Iwai-Liao, Y. & Senba, E. Effects of peripheral inflammation on activation of ERK in the rostral ventromedial medulla. *Brain Res*. 2005 Nov; 1063(2):151-158.
- Imbe, H., Iwai-Liao, Y. & Senba, E. Stress-induced hyperalgesia: animal models and putative mechanisms. *Front Biosci*. 2006 Sep; 11:2179-2192.
- Imbe, H., Kimura, A., Okamoto, K., Donishi, T., Aikawa, F., Senba, E. & Tamai, Y. Activation of ERK in the rostral ventromedial medulla is involved in hyperalgesia during peripheral inflammation. *Brain Res*. 2008 Jan; 1187:103-110.
- Imbe, H., Okamoto, K., Donishi, T., Senba, E. & Kimura, A. Involvement of descending facilitation from the rostral ventromedial medulla in the enhancement of formalin-evoked nocifensive behavior following repeated forced swim stress. *Brain Res*. 2010 May; 1329:103-112.
- Imbe, H., Senba, E., Kimura, A., Donishi, T., Yokoi, I. & Kaneoke, Y. Activation of mitogen-activated protein kinase in descending pain modulatory system. *J Signal Transduct*. 2011; 2011:468061.
- Jørum, E. Analgesia or hyperalgesia following stress correlates with emotional behavior in rats. *Pain*. 1988 Mar; 32(3):341-348.
- Julien, N., Goffaux, P., Arsenault, P. & Marchand, S. Widespread pain in fibromyalgia is related to a deficit of endogenous pain inhibition. *Pain*. 2005 Mar; 114(1-2):295-302.
- Khan, A.A., Owatz, C.B., Schindler, W.G., Schwartz, S.A., Keiser, K. & Hargreaves, K.M. Measurement of mechanical allodynia and local anesthetic efficacy in patients with irreversible pulpitis and acute periradicular periodontitis. *J Endod*. 2007 Jul; 33(7):796-799.
- Khasar, S.G., Green, P.G. & Levine, J.D. Repeated sound stress enhances inflammatory pain in the rat. *Pain*. 2005 Jul; 116(1-2):79-86.
- Khasar, S.G., Burkham, J., Dina, O.A., Brown, A.S., Bogen, O., Alessandri-Haber, N., Green, P.G., Reichling, D.B. & Levine, J.D. Stress induces a switch of intracellular signaling in sensory neurons in a model of generalized pain. *J Neurosci*. 2008 May; 28(22):5721-5730.
- Khasar, S.G., Dina, O.A., Green, P.G. & Levine, J.D. Sound stress-induced long-term enhancement of mechanical hyperalgesia in rats is maintained by sympathoadrenal catecholamines. *J Pain*. 2009 Oct; 10(10):1073-1077.
- Kilduff, T.S., Cauli, B. & Gerashchenko, D. Activation of cortical interneurons during sleep: an anatomical link to homeostatic sleep regulation? *Trends Neurosci*. 2011 Jan; 34(1):10-19.
- Kim, S.S., Descalzi, G. & Zhuo, M. Investigation of molecular mechanism of chronic pain in the anterior cingulate cortex using genetically engineered mice. *Curr Genomics*. 2010 Mar; 11(1):70-76.

- Koltzenburg, M., Wall, P.D. & McMahon, S.B. Does the right side know what the left is doing? *Trends Neurosci.* 1999 Mar; 22(3):122-127.
- Li, C.Y., Song, Y.H., Higuera, E.S. & Luo, Z.D. Spinal dorsal horn calcium channel $\alpha_2\delta_1$ subunit upregulation contributes to peripheral nerve injury-induced tactile allodynia. *J Neurosci.* 2004 Sep; 24(39):8494-8499.
- Li, D., Yang, H., Meyerson, B.A. & Linderer, B. Response to spinal cord stimulation in variants of the spared nerve injury pain model. *Neurosci Lett.* 2006 May; 400(1-2):115-120.
- Mao-Ying, Q.L., Zhao, J., Dong, Z.Q., Wang, J., Yu, J., Yan, M.F., Zhang, Y.Q., Wu, G.C. & Wang, Y.Q. A rat model of bone cancer pain induced by intra-tibia inoculation of Walker 256 mammary gland carcinoma cells. *Biochem Biophys Res Commun.* 2006 Jul; 345(4):1292-1298.
- Markus, H., Pomeranz, B. & Krushelnycky, D. Spread of saphenous somatotopic projection map in spinal cord and hypersensitivity of the foot after chronic sciatic denervation in adult rat. *Brain Res.* 1984 Mar; 296(1):27-39.
- Martenson, M.E., Cetas, J.S. & Heinricher, M.M. A possible neural basis for stress-induced hyperalgesia. *Pain.* 2009 Apr; 142(3):236-244.
- Martínez-Lavín, M. Is fibromyalgia a generalized reflex sympathetic dystrophy? *Clin Exp Rheumatol.* 2001 Jan-Feb; 19(1):1-3.
- Martinez-Lavin, M. Biology and therapy of fibromyalgia. Stress, the stress response system, and fibromyalgia. *Arthritis Res Ther.* 2007; 9(4):216.
- Maxwell, D.J., Kerr, R., Rashid, S. & Anderson, E. Characterisation of axon terminals in the rat dorsal horn that are immunoreactive for serotonin 5-HT_{3A} receptor subunits. *Exp Brain Res.* 2003 Mar; 149(1):114-124.
- McGaraughty, S. & Heinricher, M.M. Microinjection of morphine into various amygdaloid nuclei differentially affects nociceptive responsiveness and RVM neuronal activity. *Pain.* 2002 Mar; 96(1-2):153-162.
- McGaraughty, S., Farr, D.A. & Heinricher, M.M. Lesions of the periaqueductal gray disrupt input to the rostral ventromedial medulla following microinjections of morphine into the medial or basolateral nuclei of the amygdala. *Brain Res.* 2004 May; 1009(1-2):223-227.
- Meeus, M. & Nijs, J. Central sensitization: a biopsychosocial explanation for chronic widespread pain in patients with fibromyalgia and chronic fatigue syndrome. *Clin Rheumatol.* 2007 Apr; 26(4):465-473.
- Milligan, E.D., Twining, C., Chacur, M., Biedenkapp, J., O'Connor, K., Poole, S., Tracey, K., Martin, D., Maier, S.F. & Watkins, L.R. Spinal glia and proinflammatory cytokines mediate mirror-image neuropathic pain in rats. *J Neurosci.* 2003 Feb; 23(3):1026-1040.
- Milligan, E.D., Sloane, E.M., Langer, S.J., Cruz, P.E., Chacur, M., Spataro, L., Wieseler-Frank, J., Hammack, S.E., Maier, S.F., Flotte, T.R., Forsayeth, J.R., Leinwand, L.A., Chavez, R. & Watkins, L.R. Controlling neuropathic pain by adeno-associated virus driven production of the anti-inflammatory cytokine, interleukin-10. *Mol Pain.* 2005 Feb; 1:9.
- Mitchell, J.M., Lowe, D. & Fields, H.L. The contribution of the rostral ventromedial medulla to the antinociceptive effects of systemic morphine in restrained and unrestrained rats. *Neuroscience.* 1998 Nov; 87(1):123-133.
- Moldofsky H. The significance of the sleeping-waking brain for the understanding of widespread musculoskeletal pain and fatigue in fibromyalgia syndrome and allied syndromes. *Joint Bone Spine.* 2008 Jul; 75(4):397-402.

- Nagakura, Y., Oe, T., Aoki, T. & Matsuoka, N. Biogenic amine depletion causes chronic muscular pain and tactile allodynia accompanied by depression: A putative animal model of fibromyalgia. *Pain*. 2009 Nov; 146(1-2):26-33.
- Narita, M., Niikura, K., Nanjo-Niikura, K., Narita, M., Furuya, M., Yamashita, A., Saeki, M., Matsushima, Y., Imai, S., Shimizu, T., Asato, M., Kuzumaki, N., Okutsu, D., Miyoshi, K., Suzuki, M., Tsukiyama, Y., Konno, M., Yomiya, K., Matoba, M. & Suzuki, T. Sleep disturbances in a neuropathic pain-like condition in the mouse are associated with altered GABAergic transmission in the cingulate cortex. *Pain*. 2011 Jun; 152(6):1358-1372.
- Nash, J.M. & Thebauge, R.W.. Understanding psychological stress, its biological processes, and impact on primary headache. *Headache*. 2006 Oct; 46(9):1377-1386.
- Nasu, T., Taguchi, T. & Mizumura, K. Persistent deep mechanical hyperalgesia induced by repeated cold stress in rats. *Eur J Pain*. 2010 Mar; 14(3):236-244.
- Nishiyori, M. & Ueda H. Prolonged gabapentin analgesia in an experimental mouse model of fibromyalgia. *Mol Pain*. 2008 Nov; 4:52.
- O'Brien, E.M., Waxenberg, L.B., Atchison, J.W., Gremillion, H.A., Staud, R.M., McCrae, C.S. & Robinson, M.E. Negative mood mediates the effect of poor sleep on pain among chronic pain patients. *Clin J Pain*. 2010 May; 26(4):310-319.
- Okamoto, K., Imbe, H., Morikawa, Y., Itoh, M., Sekimoto, M., Nemoto, K. & Senba, E. 5-HT_{2A} receptor subtype in the peripheral branch of sensory fibers is involved in the potentiation of inflammatory pain in rats. *Pain*. 2002 Sep; 99(1-2):133-143.
- Okamoto, K., Imbe, H., Tashiro, A., Kumabe, S. & Senba, E. Blockade of peripheral 5HT₃ receptor attenuates the formalin-induced nocifensive behavior in persistent temporomandibular joint inflammation of rat. *Neurosci Lett*. 2004 Sep; 367(2):259-263.
- Okamoto, K., Imbe, H., Tashiro, A., Kimura, A., Donishi, T., Tamai, Y. & Senba, E. The role of peripheral 5HT_{2A} and 5HT_{1A} receptors on the orofacial formalin test in rats with persistent temporomandibular joint inflammation. *Neuroscience*. 2005a; 130(2):465-474.
- Okamoto, K., Kimura, A., Donishi, T., Imbe, H., Senba, E. & Tamai, Y. Central serotonin 3 receptors play an important role in the modulation of nociceptive neural activity of trigeminal subnucleus caudalis and nocifensive orofacial behavior in rats with persistent temporomandibular joint inflammation. *Neuroscience*. 2005b; 135(2):569-581.
- Okamoto, K., Kimura, A., Donishi, T., Imbe, H., Goda, K., Kawanishi, K., Tamai, Y. & Senba, E. Persistent monoarthritis of the temporomandibular joint region enhances nocifensive behavior and lumbar spinal Fos expression after noxious stimulation to the hindpaw in rats. *Exp Brain Res*. 2006a Apr; 170(3):358-367.
- Okamoto, K., Kimura, A., Donishi, T., Imbe, H., Nishie, Y., Matsushita, H., Tamai, Y. & Senba, E. Contribution of peripheral 5-HT_{2A} or 5-HT₃ receptors to Fos expression in the trigeminal spinal nucleus produced by acute injury to the masseter muscle during persistent temporomandibular joint inflammation in rats. *Neuroscience*. 2006b Dec; 143(2):597-606.
- Okamoto, K., Imbe, H., Kimura, A., Donishi, T., Tamai, Y. & Senba, E. Activation of central 5HT_{2A} receptors reduces the craniofacial nociception of rats. *Neuroscience*. 2007 Jul; 147(4):1090-1102.
- Pincus, T., Burton, A.K., Vogel, S. & Field, A.P. A systematic review of psychological factors as predictors of chronicity/disability in prospective cohorts of low back pain. *Spine (Phila Pa 1976)*. 2002 Mar; 27(5):E109-120.
- Porreca, F., Ossipov, M.H. & Gebhart, G.F. Chronic pain and medullary descending facilitation. *Trends Neurosci*. 2002 Jun; 25(6):319-325.

- Quintero, L., Moreno, M., Avila, C., Arcaya, J., Maixner, W. & Suarez-Roca, H. Long-lasting delayed hyperalgesia after subchronic swim stress. *Pharmacol Biochem Behav.* 2000 Nov; 67(3):449-458.
- Quintero, L., Cuesta, M.C., Silva, J.A., Arcaya, J.L., Pinerua-Suhaibar, L., Maixner, W. & Suarez-Roca, H. Repeated swim stress increases pain-induced expression of c-Fos in the rat lumbar cord. *Brain Res.* 2003 Mar; 965(1-2):259-268.
- Radley, J.J., Sisti, H.M., Hao, J., Rocher, A.B., McCall, T., Hof, P.R., McEwen, B.S. & Morrison, J.H. Chronic behavioral stress induces apical dendritic reorganization in pyramidal neurons of the medial prefrontal cortex. *Neuroscience.* 2004; 125(1):1-6.
- Ren, K. & Dubner, R. Descending modulation in persistent pain: an update. *Pain.* 2002 Nov; 100(1-2):1-6.
- Rhudy, J.L. & Meagher, M.W. Fear and anxiety: divergent effects on human pain thresholds. *Pain.* 2000 Jan; 84(1):65-75.
- Sandkühler, J. Understanding LTP in pain pathways. *Mol Pain.* 2007 Apr; 3:9.
- Sarlani, E. & Greenspan, J.D. Evidence for generalized hyperalgesia in temporomandibular disorders patients. *Pain.* 2003 Apr; 102(3):221-226.
- Satoh, M., Kuraishi, Y. & Kawamura, M. Effects of intrathecal antibodies to substance P, calcitonin gene-related peptide and galanin on repeated cold stress-induced hyperalgesia: comparison with carrageenan-induced hyperalgesia. *Pain.* 1992 May; 49(2):273-278.
- Schreiber, K.L., Beitz, A.J. & Wilcox, G.L. Activation of spinal microglia in a murine model of peripheral inflammation-induced, long-lasting contralateral allodynia. *Neurosci Lett.* 2008 Jul; 440(1):63-67.
- Schweinhart, P., Glynn, C., Brooks, J., McQuay, H., Jack, T., Chessell, I., Bountra, C. & Tracey, I. An fMRI study of cerebral processing of brush-evoked allodynia in neuropathic pain patients. *Neuroimage.* 2006 Aug; 32(1):256-265.
- Senba, E. & Ueyama, T. Stress-induced expression of immediate early genes in the brain and peripheral organs of the rat. *Neurosci Res.* 1997 Nov; 29(3):183-207.
- Shenker, N., Haigh, R., Roberts, E., Mapp, P., Harris, N. & Blake, D. A review of contralateral responses to a unilateral inflammatory lesion. *Rheumatology (Oxford).* 2003 Nov; 42(11):1279-1286.
- Shenker, N.G., Haigh, R.C., Mapp, P.I., Harris, N. & Blake, D.R. Contralateral hyperalgesia and allodynia following intradermal capsaicin injection in man. *Rheumatology (Oxford).* 2008 Sep; 47(9):1417-1421.
- Sluka, K.A., Kalra, A. & Moore, S.A. Unilateral intramuscular injections of acidic saline produce a bilateral, long-lasting hyperalgesia. *Muscle Nerve.* 2001 Jan; 24(1):37-46.
- Staud, R. & Rodriguez, M.E.. Mechanisms of disease: pain in fibromyalgia syndrome. *Nat Clin Pract Rheumatol.* 2006 Feb; 2(2):90-98.
- Staud, R., Nagel, S., Robinson, M.E. & Price, D.D. Enhanced central pain processing of fibromyalgia patients is maintained by muscle afferent input: a randomized, double-blind, placebo-controlled study. *Pain.* 2009 Sep; 145(1-2):96-104.
- Suarez-Roca, H., Leal, L., Silva, J.A., Pinerua-Shuhaibar, L. & Quintero, L. Reduced GABA neurotransmission underlies hyperalgesia induced by repeated forced swimming stress. *Behav Brain Res.* 2008 May; 189(1):159-169.
- Sugiyo, S., Takemura, M., Dubner, R. & Ren, K. Trigeminal transition zone/rostral ventromedial medulla connections and facilitation of orofacial hyperalgesia after masseter inflammation in rats. *J Comp Neurol.* 2005 Dec; 493(4):510-523.

- Suzuki, R., Morcuende, S., Webber, M., Hunt, S.P. & Dickenson, A.H. Superficial NK1-expressing neurons control spinal excitability through activation of descending pathways. *Nat Neurosci.* 2002 Dec; 5(12):1319-1326.
- Suzuki, R., Rygh, L.J. & Dickenson, A.H. Bad news from the brain: descending 5-HT pathways that control spinal pain processing. *Trends Pharmacol Sci.* 2004 Dec; 25(12):613-617.
- Takemura, Y., Yamashita, A., Horiuchi, H., Furuya, M., Yanase, M., Niikura, K., Imai, S., Hatakeyama, N., Kinoshita, H., Tsukiyama, Y., Senba, E., Matoba, M., Kuzumaki, N., Yamazaki, M., Suzuki, T. & Narita, M. Effects of gabapentin on brain hyperactivity related to pain and sleep disturbance under a neuropathic pain-like state using fMRI and brain wave analysis. *Synapse.* 2011 Jul; 65(7):668-676.
- Tanabe, M., Takasu, K., Takeuchi, Y. & Ono, H.. Pain relief by gabapentin and pregabalin via supraspinal mechanisms after peripheral nerve injury. *J Neurosci Res.* 2008 Nov; 86(15):3258-3264.
- Türp, J.C., Kowalski, C.J., O'Leary, N. & Stohler, C.S. Pain maps from facial pain patients indicate a broad pain geography. *J Dent Res.* 1998 Jun; 77(6):1465-1472.
- Umemoto, S., Kawai, Y., Ueyama, T. & Senba E. Chronic glucocorticoid administration as well as repeated stress affects the subsequent acute immobilization stress-induced expression of immediate early genes but not that of NGFI-A. *Neuroscience.* 1997 Oct; 80(3):763-773.
- Vera-Portocarrero, L.P., Xie, J.Y., Kowal, J., Ossipov, M.H., King, T. & Porreca F. Descending facilitation from the rostral ventromedial medulla maintains visceral pain in rats with experimental pancreatitis. *Gastroenterology.* 2006 Jun; 130(7):2155-2164.
- Verne, G.N. & Price, D.D. Irritable bowel syndrome as a common precipitant of central sensitization. *Curr Rheumatol Rep.* 2002 Aug; 4(4):322-328.
- Vidal, C. & Jacob, J. Hyperalgesia induced by non-noxious stress in the rat. *Neurosci Lett.* 1982 Sep; 32(1):75-80.
- Vyas, A., Mitra, R., Shankaranarayana, Rao. B.S. & Chattarji, S.. Chronic stress induces contrasting patterns of dendritic remodeling in hippocampal and amygdaloid neurons. *J Neurosci.* 2002 Aug; 22(15):6810-6818.
- Wasner, G., Naleschinski, D., Binder, A., Schattschneider, J., McLachlan, E.M. & Baron, R. The effect of menthol on cold allodynia in patients with neuropathic pain. *Pain Med.* 2008 Apr; 9(3):354-358.
- Wei, F., Dubner, R., Zou, S., Ren, K., Bai, G., Wei, D. & Guo, W. Molecular depletion of descending serotonin unmasks its novel facilitatory role in the development of persistent pain. *J Neurosci.* 2010 Jun; 30(25):8624-8636.
- Wood, P.B. Stress and dopamine: implications for the pathophysiology of chronic widespread pain. *Med Hypotheses.* 2004; 62(3):420-424.
- Wood, J.L. & Russo, A.F. Autoregulation of cell-specific MAP kinase control of the tryptophan hydroxylase promoter. *J Biol Chem.* 2001 Jun; 276(24):21262-21271.
- Yasuda, T., Miki, S., Yoshinaga, N. & Senba E. Effects of amitriptyline and gabapentin on bilateral hyperalgesia observed in an animal model of unilateral axotomy. *Pain.* 2005 May; 115(1-2):161-170.
- Yu, L.C., Hansson, P. & Lundberg, T. The calcitonin gene-related peptide antagonist CGRP8-37 increases the latency to withdrawal responses bilaterally in rats with unilateral experimental mononeuropathy, an effect reversed by naloxone. *Neuroscience.* 1996 Mar; 71(2):523-531.
- Zhuo, M. Cortical excitation and chronic pain. *Trends Neurosci.* 2008 Apr; 31(4):199-207.
- Zhuo, M. A synaptic model for pain: long-term potentiation in the anterior cingulate cortex. *Mol Cells.* 2007 Jun; 23(3):259-271.



New Insights into Fibromyalgia

Edited by Dr. William S. Wilke

ISBN 978-953-307-407-8

Hard cover, 216 pages

Publisher InTech

Published online 05, January, 2012

Published in print edition January, 2012

Given the potential problems that can obscure any scientific enterprise, inconsistent results across studies are bound to occur. How are we to decide what is true? Let's turn to philosophy for a reasonable answer. The mathematician-philosopher Bertrand Russell approached a similar problem in his monograph *The Problems of Philosophy* (Russell B, 1912). He addressed the following question: How do we know that anything is "real"? Is the only reality subjective and simply in our minds, as Bishop Berkley challenged, or can we mostly believe the objective reality? His pragmatic answer: All possibilities may be true, but when the preponderance of evidence indicates that objective reality and knowledge are the most probable case, go with it. If the preponderance of all evidence about the clinical description of fibromyalgia and it's pathogenic mechanisms and treatment strategies indicate a highly probable interrelated hypothesis, go with it. The direction of the literature on the whole trumps the less likely tangents. At the same time, remember Bertrand Russell and his pragmatic answer, and keep an open mind.

How to reference

In order to correctly reference this scholarly work, feel free to copy and paste the following:

Emiko Senba, Keiichiro Okamoto and Hiroki Imbe (2012). Central Sensitization and Descending Facilitation in Chronic Pain State, *New Insights into Fibromyalgia*, Dr. William S. Wilke (Ed.), ISBN: 978-953-307-407-8, InTech, Available from: <http://www.intechopen.com/books/new-insights-into-fibromyalgia/central-sensitization-and-descending-facilitation-in-chronic-pain-state>

INTeCH
open science | open minds

InTech Europe

University Campus STeP Ri
Slavka Krautzeka 83/A
51000 Rijeka, Croatia
Phone: +385 (51) 770 447
Fax: +385 (51) 686 166
www.intechopen.com

InTech China

Unit 405, Office Block, Hotel Equatorial Shanghai
No.65, Yan An Road (West), Shanghai, 200040, China
中国上海市延安西路65号上海国际贵都大饭店办公楼405单元
Phone: +86-21-62489820
Fax: +86-21-62489821

© 2012 The Author(s). Licensee IntechOpen. This is an open access article distributed under the terms of the [Creative Commons Attribution 3.0 License](https://creativecommons.org/licenses/by/3.0/), which permits unrestricted use, distribution, and reproduction in any medium, provided the original work is properly cited.

IntechOpen

IntechOpen