

# We are IntechOpen, the world's leading publisher of Open Access books Built by scientists, for scientists

6,900

Open access books available

186,000

International authors and editors

200M

Downloads

Our authors are among the

154

Countries delivered to

TOP 1%

most cited scientists

12.2%

Contributors from top 500 universities



WEB OF SCIENCE™

Selection of our books indexed in the Book Citation Index  
in Web of Science™ Core Collection (BKCI)

Interested in publishing with us?  
Contact [book.department@intechopen.com](mailto:book.department@intechopen.com)

Numbers displayed above are based on latest data collected.  
For more information visit [www.intechopen.com](http://www.intechopen.com)



## Markers of Vascular Damage and Repair

Uta Erdbruegger<sup>1</sup>, Ajay Dhaygude<sup>2</sup> and Alexander Woywodt<sup>2</sup>

<sup>1</sup>*Division of Nephrology, University of Virginia at Charlottesville, Charlottesville,*

<sup>2</sup>*Renal Unit, Lancashire Teaching Hospitals NHS Foundation Trust, Preston, Lancashire,*

<sup>1</sup>*USA*

<sup>2</sup>*United Kingdom*

### 1. Introduction

Damage to endothelial cells is a crucial event during the pathogenesis of vasculitis. The vasculitides cause different clinical manifestations, depending on the extent and acuity of endothelial damage as well as their preponderance to affect some organ-specific endothelial cells and spare others. About 40 years ago circulating endothelial cells (CEC) were first observed in peripheral blood. Since then CEC have been established as a reliable indicator of vascular injury and damage and more sophisticated detection techniques, such as immunomagnetic isolation and fluorescence-activated cell sorting (FACS), have become available to detect and enumerate them. Based on current concepts of pathogenesis, detached endothelial cells, and/or their soluble and cellular debris, must be detectable in peripheral blood of vasculitis patients. In hindsight, it is therefore surprising that for many years few, if any, attempts were made to evaluate their use as clinically relevant markers of endothelial damage. Endothelial Microparticles (eMP) have been described as another potential marker of endothelial damage. eMP are markers of activation, cell injury or apoptosis. They are the product of exocytic budding and consist of cytoplasmic components and phospholipids. Fluorescence-activated cell sorting (FACS) is the preferred technology for isolating MP and different surface markers of the parent cells have been used. eMP can reflect endothelial activation and damage, although differences between eMP and CEC remain ill-defined. Another approach to measuring endothelial damage is to assay soluble markers, such as thrombomodulin or von Willebrand factor. However, these markers also have their limitations. It is also worthwhile to remember that all approaches struggle with the fact that many endothelial markers are also expressed on non-endothelial cells (Table 1). More recently, interest has focused on endothelial repair and damage and endothelial progenitor cells have been studied, again with different methodologies. Recent evidence has also revealed interesting interactions between CEC and healthy endothelium in vitro although the relevance of these findings for human vascular disease in vivo remains unclear. Here, we review markers of endothelial damage and repair in vasculitis. We discuss the implications of these findings for the pathogenesis, their potential clinical utility, and also review the limitations of each approach. Finally, we review the phenotype of CEC, mechanisms of detachment and interactions with other cell subsets.

2. Soluble endothelial markers

Endothelial cells express a broad variety of proteins <sup>1</sup> but only few of these have been studied in serum or plasma in vascular disease. Currently, von Willebrand factor (vWF), thrombomodulin <sup>2</sup>, soluble E-Selectin and circulating angiopoietin <sup>3</sup> are best described <sup>4-7</sup>. It must be noted that several factors may influence the levels of these circulating proteins. For example, thrombomodulin undergoes renal excretion. Hence, serum levels are influenced by renal function. Other confounding factors, such as liver function, clotting or fibrinolysis may also influence these proteins. In addition, these soluble markers do not distinguish between endothelial activation and damage. Some investigators compared levels of these markers with numbers of CECs. A recent study found a correlation between CECs, von Willebrand factor (p=0.002) and plasma tissue factor (p=0.02) <sup>8</sup>. It is also clear that necrotic endothelial cells will release, either in situ or after their detachment from the basement membrane, a variety of other, nonspecific, soluble factors. In this regard, Bruchfeld and colleagues recently reported elevated levels of High-mobility group box-1 protein (HMGB1), a nuclear and cytosolic protein that is released from necrotic cells <sup>9</sup>. However HMGB1 is also actively secreted from monocytes and macrophages. Angiopoietin-2 (Ang-2) is another new soluble marker investigated in small vessel vasculitis. Ang-2 is bound to the endothelial specific angiopoietin Tie Ligand-receptor, which is a regulator of endothelial cell detachment. Circulating Ang-2 is elevated in small vessel vasculitis and closely correlates with vasculitis activity score <sup>3</sup>. Ang-2 therefore reflects a potential new mediator of endothelial cell detachment in vasculitis although theses findings need to be validated by analyzing a larger cohort.

CD/antigen name	Other names	Expression by non-endothelial cells
CD31	PECAM-1	Platelets, monocytes, neutrophils, T cell subsets
CD62e	E-selectin	Activated endothelial cells
CD54	ICAM-1	Endothelial cells, activated B and T lymphocytes, monocytes
CD105	Endoglin	Endothelial cells, activated monocytes, tissue macrophages, erythroid marrow precursors
CD106	VCAM-1	Activated endothelial cells, stromal cells
CD141	Thrombomodulin	Endothelial cells, keratinocytes, platelets, monocytes, neutrophils
CD146	P1H12, S-endo-1	Endothelial cells, activated T-Lymphocytes, melanoma cells, trophoblast
Tissue factor		Endothelial cells, monocytes/macrophages

Table 1. Antigens of endothelial cells, which are also present on non-endothelial cells

3. Circulating endothelial cells in vasculitis

Circulating endothelial cells (CEC) are detectable in peripheral blood after they have been detached from the damaged endothelial monolayer, probably leaving behind a denuded basement membrane. Those cells were first described almost 40 years ago <sup>10</sup> although methods of their identification were rather primitive. ANCA-associated small-vessel

vasculitis serves as a paradigm of an endothelial disorder. Therefore it is not surprising that high numbers of CEC are detected in ANCA vasculitis and correlate with disease activity <sup>11</sup>. Phenotypic analysis, however, proved more difficult than anticipated. It is quite clear from the concept of small vessel vasculitis that CEC cannot be specific to ANCA vasculitis. Dang and colleagues reported elevated CEC numbers in aortoarteritis <sup>12</sup> while Nakatani et al. demonstrated CECs in patients with Kawasaki disease <sup>13</sup>. CEC are also elevated in systemic lupus erythematosus <sup>14</sup> and Behcet's <sup>15</sup>. In a broader sense, CEC are also markedly elevated in other, non-vasculitic, forms of widespread acute vasculopathy, such as thrombotic microangiopathy <sup>16</sup>. In addition, CEC can be useful to monitor treatment and to distinguish between relapse and infection in difficult cases <sup>17</sup>. Patients with relapse of vasculitis had markedly elevated numbers of circulating endothelial cells and indeed similar cell numbers when compared to patients at their initial vasculitic presentation<sup>18</sup>. Patients with limited disease due to granulomatous ANCA-associated vasculitis had only slightly elevated cell numbers, which were similar to those seen in remission. Patients with infection had no elevated CEC numbers <sup>18</sup>. These findings gave us confidence in the clinical use of CEC in vasculitis <sup>17, 19</sup> although prospective data on the clinical use of CEC are lacking.

	CEC	EPC
Cell type	Mature endothelium	Endothelial progenitor cell
Origin	Vessel wall	Bone marrow
Morphology	Cells, a-nuclear carcasses or sheets of multiple cells 10-100µm	Diameter less than 20µm
Characteristic properties	VWF CD 31 Thrombomodulin CD 146 UEA-1	CD 133 CD 34 TIE-2 KDR Uptake of acetylated LDL UEA-1 (unclear)
Colony-forming potential	None (controversial)	Yes
Laboratory methods	Immunomagnetic isolation, FACS	FACS, culture assays

Table 2. Characteristic properties of CEC and EPC

3.1 CEC and vasculitis: Immunomagnetic isolation and FACS in competition

The mainstay of immunomagnetic isolation is the use of paramagnetic particles (Dynabeads™), which have been coated with anti-endothelial antibodies as reviewed in great detail elsewhere <sup>10</sup>. Briefly, whole blood is incubated with antibody-labeled magnetic Dynabeads™. Next, target cells with bound anti-endothelial antibody and Dynabeads™ are recovered with a magnet. CEC can then be enumerated after acridine staining. Immunomagnetic capturing is mostly performed using the cell surface marker CD 146 <sup>20</sup>. A variety of factors has been considered to influence CEC counts <sup>21</sup>. To avoid false positive results caused by traumatic venepuncture (resulting in dislodgement of endothelial cells from the vessel wall) it is recommended to discard the first tube of blood <sup>20</sup>. Adding albumin

or EDTA and Fc-blocking agents is employed to reduce non-specific binding of anti-CD 146-coupled beads to leukocytes although this remains a concern even in experienced hands <sup>22</sup>. Moreover, activated T-lymphocytes and other cell subsets may under some circumstances also harbor CD 146 and lead to artifacts <sup>23</sup>. We therefore developed a secondary stain with *Ulex Europaeus* lectin 1 (UEA-1). <sup>24</sup> Even so and despite the proposal of a consensus for definition of CEC the approach remains time consuming and require considerable experience. Automated systems have been described but these are costly <sup>25</sup>.

Flow cytometry is an alternative technique to isolate and enumerate CEC <sup>26-31</sup>. The technique holds considerable promise, as several surface markers can be used concurrently. For example, CD 146 expression on activated T cells can be distinguished from CD 146 on endothelial cells by co-staining with CD45 or CD3 (or both). CD 133 may help to identify EPC because it is not present on CEC or any mature endothelial cells. The addition of viability stains, such as propidium iodide or 7-AAD, may also help to identify EPC. Markers of endothelial activation can be studied as well. Most groups define CEC using flow cytometry as CD146+, CD34+ and CD45- <sup>32</sup>. Others have defined CEC as CD31bright, CD34+CD45-, CD133- <sup>33 34</sup>. However, CD31 bright could also include platelets, resulting in falsely elevated numbers of CEC <sup>35</sup>.

Unlike immunomagnetic isolation, FACS does not permit visualization of the cell. Furthermore the cell numbers obtained with FACS differ markedly from those obtained with immunomagnetic isolation, whereby higher numbers are usually observed with FACS. In addition, there is considerable discrepancy in these numbers between different groups that employ FACS. It is remarkable that most if not all investigators using immunomagnetic isolation enumerate in the range of 10 CEC/ml blood in healthy individuals while those using FACS report cell numbers in the thousands per ml with a fairly broad range <sup>10</sup>: Holmen and colleagues measured a mean of 50 CEC/ml in healthy controls <sup>26</sup>, Mancuso et al. counted 1,200 CEC/ml of rested cells <sup>36</sup> and Jacques N et al. 6.5 CEC/ml <sup>37</sup>. Two groups compared CEC counts measured with both methods in the same populations. Goon et al. measured 8 CEC/ml in healthy controls comparable to CEC detection by IB (4.5CEC/ml) <sup>32</sup>. In contrast, Clarke et al. detected lower numbers of CEC by FC compared to IB <sup>38</sup> suggesting limited sensitivity for the detection of CECs. Further validation studies are required to determine the influence of gating, CEC phenotype, and "lysing", which could reduce recovery of CEC.

In comparison to immuno-magnetic isolation, FACS holds considerable promise and technical advantages. In addition, FACS is less time consuming and easily amenable to standardization. Cost is difficult to compare with immunomagnetic isolation, given the expenditure for the FACS counter and the fact that the cost of experienced staff is difficult to gauge. Very recently alternative approaches have combined the two techniques <sup>39</sup>. This novel tool has to be validated in other clinical settings and populations.

### 3.2 Phenotype and mechanisms of detachment of CEC in vasculitis

Endothelial cells can be activated by various stimuli, such as pro-inflammatory cytokines, growth factors, infectious agents, lipoproteins, or oxidative stress. Loss of integrity of the endothelial layer eventually leads to cell detachment of cells <sup>40</sup>. Such detachment can be caused by defective adhesive properties of the endothelial cells, by action of proteases and/or cytokines or, by mechanical injury. Endothelial adhesive molecules of the integrin and cadherin family, such as vitronectin and fibronectin and VE cadherin, respectively,



promote adhesion of endothelial cells to matrix<sup>40-41</sup>. Loss of these survival signals triggers detachment and apoptosis of endothelial cells<sup>42</sup>. Protective factors have been described as well: In sickle cell disease endothelial apoptosis is impaired by VEGF. This has also been shown in vitro, where VEGF inhibits apoptosis of unanchored culture cells<sup>43</sup>. Release of proteases by granulocytes is another well-documented cause of endothelial cell detachment<sup>44-45 46 47</sup>. Finally, mechanical force can detach endothelial cells from the basement membrane as shown in patients undergoing percutaneous catheter interventions<sup>48</sup>.

Not much is known regarding the phenotype of CEC. This is caused mainly by the paucity of CEC even in active disease and in the difficulty of characterizing these cells further. Moreover, it is difficult to say with certainty whether or not phenotypic changes were induced by the isolation procedure itself. The viability of CEC remains particularly controversial. Our own data suggest that CEC in ANCA-associated small-vessel vasculitis are mainly necrotic<sup>11</sup> and we were unable to culture these cells. Others, however, describe culture of CEC that were isolated by FACS. In contrast, two-thirds of CEC in normal subjects are believed to be apoptotic<sup>49</sup>. Lin et al could also demonstrate that vessel-wall derived CD146+ CEC can be viable, although they have limited growth capability<sup>50</sup>. Another group was recently able to grow CEC for about 10 days, but no significant proliferative capacity was observed<sup>26</sup>.

### 3.3 Circulating endothelial cells as potential mediators of disease

It has been speculated that CEC themselves could be pro-inflammatory<sup>40</sup>. In general, damaged eukaryotic cells have been shown to release a variety of pro-inflammatory factors, to initiate pro-inflammatory pathways in other cell subsets, such as a Toll-like-receptor-2/NFκB-dependent reaction in monocytes<sup>51</sup>. In highly active vasculitis, the healthy endothelium must surely encounter a vast array of apoptotic and/or necrotic endothelial cells and their debris. Disturbed clearance of apoptotic cells may play a role in systemic lupus erythematosus<sup>52</sup>. Interestingly, apoptotic and necrotic endothelial cells and their fragments are rapidly internalized by healthy endothelium<sup>53</sup>. Support for these findings came from other studies demonstrating the phagocytic capability of endothelial cells<sup>54</sup>. We could also show that endothelial cells exposed to apoptotic and necrotic cells exhibit enhanced adhesion properties for leukocytes and that isolated CEC from patients with vasculitis aggravated these effects further<sup>53</sup>. These effects on binding properties could be explained in part by release of IL-8 and MCP1, which serve as chemo-attractants. Interestingly, apoptotic and necrotic cells induced different patterns of effects in healthy endothelium. Enhanced IL-8 and MCP1 levels in serum have been detected in patients with active vasculitis and ANCA induce the synthesis of these chemokines in various cell subsets<sup>55</sup>. Endothelial synthesis of these mediators triggered by ANCA<sup>56</sup> and circulating endothelial cells<sup>53</sup> may contribute to the pro-inflammatory state associated with vasculitis.

We have investigated this topic further and became interested in thrombospondin (TSP-1) as a possible mediator. This multi-functional glycoprotein is a known endogenous inhibitor of angiogenesis<sup>57</sup> and modulates cell adhesion and proliferation<sup>58</sup>. We were able to show that apoptotic cells induce expression of TSP-1 in endothelial cells<sup>59</sup> and that TSP-1 facilitates engulfment of apoptotic cells by phagocytes<sup>59</sup>. We speculate that under pathological conditions with high numbers of un-cleared dying cells in the circulation endothelial-derived elevated TSP-1 level may serve as an attraction signal for phagocytes promoting enhanced recognition and clearance of apoptotic cells.

It is probably fair to say that at present we do not understand the interactions between CEC and healthy endothelium and other cell subsets. Further studies, for example in animal models, are surely warranted. Figure 1 summarizes proven and proposed interactions of circulating endothelial cells with healthy endothelium.

#### 4. Microparticles in vasculitis: Just smaller than CEC or different, too?

Microparticles (MP) are sub-micrometric fragments derived from plasma membranes in response to a variety of events, such as activation, injury, or apoptosis. Loss of phospholipid asymmetry and increased surface expression of phosphatidylserine are crucial events in this process<sup>60-61</sup>. On their surface these particles express antigens that reflect their cellular origin, which permits their enumeration and characterisation by flow cytometry. In addition eMP have a functional role as mediators of inflammation or coagulation. In general, microparticles have attracted considerable interest in vascular disease although a consensus definition of these particles and a uniformly accepted protocol for their enumeration is still lacking<sup>62</sup>. To make matters even more complicated, endothelial microparticles represent a small subgroup of all MP found in plasma<sup>63</sup>. Specific endothelial microparticles were first described in 1990 by Hamilton and colleagues<sup>64</sup>. On balance, it is probably fair to say that the field of microparticles is fraught with similar technical issues as that of CEC and that further standardisation is eagerly awaited.

We studied endothelial microparticles (EMP) by FACS analysis and found elevated EMP in active vasculitis<sup>65</sup>. Similar results had previously been obtained in a paediatric cohort of vasculitis patients<sup>60 66</sup>. Particle counts also correlated with disease activity<sup>65</sup>. The difficult bit is that CECs and microparticles may not reflect the same disease process. Incidentally, the same holds true for soluble endothelial markers, such as soluble von Willebrand factor or thrombomodulin: CEC, EMP and soluble markers may represent different mechanisms of endothelial activation and damage. For example, soluble markers and EMP may already be elevated in endothelial activation whereas presence of CEC probably reflects true damage. Interestingly CEC and eMP also follow different kinetics in ANCA-associated vasculitis: CEC decline slowly during successful immunosuppressive therapy while activated eMP probably represent an early marker that normalises quickly<sup>65</sup>. To make matters even more complicated, each of these markers may underlie different confounding factors: eMP are elevated in patients with renal diseases including those on hemodialysis<sup>67</sup> and could reflect vascular damage in these patients whereas CEC are not increased in renal failure<sup>11</sup>. Nevertheless, ESRD patients with and without a history of cardiovascular disease causing possible endothelial damage had similar levels of EMP<sup>68</sup>. This illustrates that phenotyping of microparticles and characterization of subgroups of microparticles for each different disease process will be crucial as each disease process will release different microparticles.

Finally, EMP may also have pathogenetic importance in vasculitis. Microparticles are now regarded as crucial players at the interface of atherosclerosis and inflammation<sup>69</sup>. MP are generally capable of inducing cytokine release<sup>70</sup> and leukocyte MP induce endothelial IL-6 and MCP-1 production<sup>71</sup>. It has been demonstrated that endothelial microparticles convert plasminogen into plasmin<sup>72</sup> and are tissue-factor positive<sup>73</sup>. Burkhart et al. demonstrated recently that microparticle tissue factor activity is increased in PR3-ANCA vasculitis patients with active disease<sup>74</sup>.

Evidence has also emerged to suggest that endothelial release of microparticles from adherent cells is actually protective and that inhibition of microparticle release leads to

endothelial detachment <sup>75</sup>. Moreover, pre-treatment of endothelial cells and monocytes with platelet derived MP modulates monocyte-endothelial cell interactions by increasing the expression of adhesion molecules on both cell types <sup>76</sup>. EMP have been shown to decrease nitric-oxide-dependent vasodilation and to be both pro-inflammatory and pro-coagulant <sup>61</sup>. MP have also been found to stimulate angiogenesis and differentiation of progenitor cells <sup>77</sup>. Finally, elegant studies in flow chambers have demonstrated that MP enhance leukocyte rolling <sup>78</sup>. Taken together, current data suggest that EMP may not only be a surrogate marker of vasculitis but that they may contribute to the pro-inflammatory and pro-coagulant status of the endothelium. It must be remembered, however, that findings in generic microparticles may not be applicable to EMP and vice versa.

## 5. CEC and EPC – an ongoing controversy

The role of endothelial progenitor cells (EPC) <sup>79</sup> in vascular disease and their potential role for therapy <sup>80</sup> have been reviewed recently <sup>81</sup>. Of note, the field of EPC is particularly hampered by lack of standardisation <sup>82 83</sup>. Our knowledge about the kinetics of CEC detachment and EPC mobilisation as well as their interaction is equally limited. Very recently, the margins between endothelial progenitor cells and haematopoietic stem cells became somewhat blurred after proof that endothelial cells can be haematopoietic in mice <sup>84</sup>. We have previously studied numbers of circulating CD34+ progenitor cells and EPCs in vasculitis and demonstrated that these cells increased significantly after the institution of immunosuppressive therapy and with disease remission <sup>85</sup>. Others have previously described an increase in EPCs in inflammatory vascular diseases: Avouac and colleagues, for instance, described increased EPC numbers in scleroderma <sup>86</sup>. In contrast to de Groot and co-workers <sup>85</sup>, other studies postulate an imbalance between CECs and EPCs in patients with vasculitis <sup>26 87</sup>. Another study by Zavada and colleagues reports reduced EPC numbers as a risk factor for relapse in vasculitis <sup>88</sup>. Of note, the pattern of EPC in vasculitis may be different in children and one group reports increased numbers in active vasculitis <sup>66</sup>. EPCs were also measured in other subgroups of vasculitis. In Behcet's vasculitis EPC were decreased <sup>89</sup>, in children with Kawasaki disease EPC were increased <sup>90</sup>.

What make these studies so difficult to compare is, again, the lack of standardisation and the use of different assays and surface markers. Of note, the field of EPC is particularly hampered by lack of standardisation <sup>82 83</sup>. The population of EPC may include a group of cells existing in a variety of stages ranging from immature hematopoietic stem cells to completely differentiated endothelial cells. Endothelial markers, such as CD-146 and UEA-1 are also present on EPC. However, the severely damaged morphology of cells obtained by CD-146-driven immunomagnetic isolation and our inability to grow these cells in culture <sup>11</sup> was regarded as indication that these cells are not EPC. Our own experience shows that CD 146 positive cells were CD 133 negative <sup>91</sup>. Very recently, however, Delorme and co-workers clearly demonstrated EPC among a population of cells isolated by CD-146-driven immunomagnetic isolation <sup>92</sup>. Although their findings need corroboration, new protocols of immunomagnetic isolation may be needed to exclude EPC. Table 2 summarizes characteristic properties of CEC and EPC.

Therefore, the studies mentioned above provide interesting food for thought but require independent confirmation. What stimulates EPCs in reaction to ischemia or other forms of insult? There is conclusive evidence that EPC are not stimulated by the non-specific acute



phase response<sup>93</sup> but by microvascular injury<sup>94</sup>. A variety of specific factors have been implicated in this mechanism: First, it is worthwhile to remember that erythropoietin (EPO) regulates EPCs<sup>95</sup>. Hence EPO treatment must always be corrected for when EPCs are measured in renal patients. Statins also influence EPC numbers<sup>96</sup>. Other factors that have been implicated as regulators of EPCs include vascular endothelial growth factor (VEGF), the angiopoietins, and platelet-derived growth factor CC (PDGF-CC). Haeme oxygenase 1 (HO1) has been implicated as well<sup>97</sup>. It is clear that EPCs are capable of homing in to sites of vascular damage. Mechanisms include CD18/ICAM-1 and sdf-1/CXCR4. Endothelial commitment requires histone deacylase (HDAC) activity and depends on the expression of the homoeobox transcription factor HoxA9<sup>98</sup>. It is probably fair to say that EPCs will receive further scientific attention in vasculitis while a standard as to their definition and enumeration is eagerly awaited.

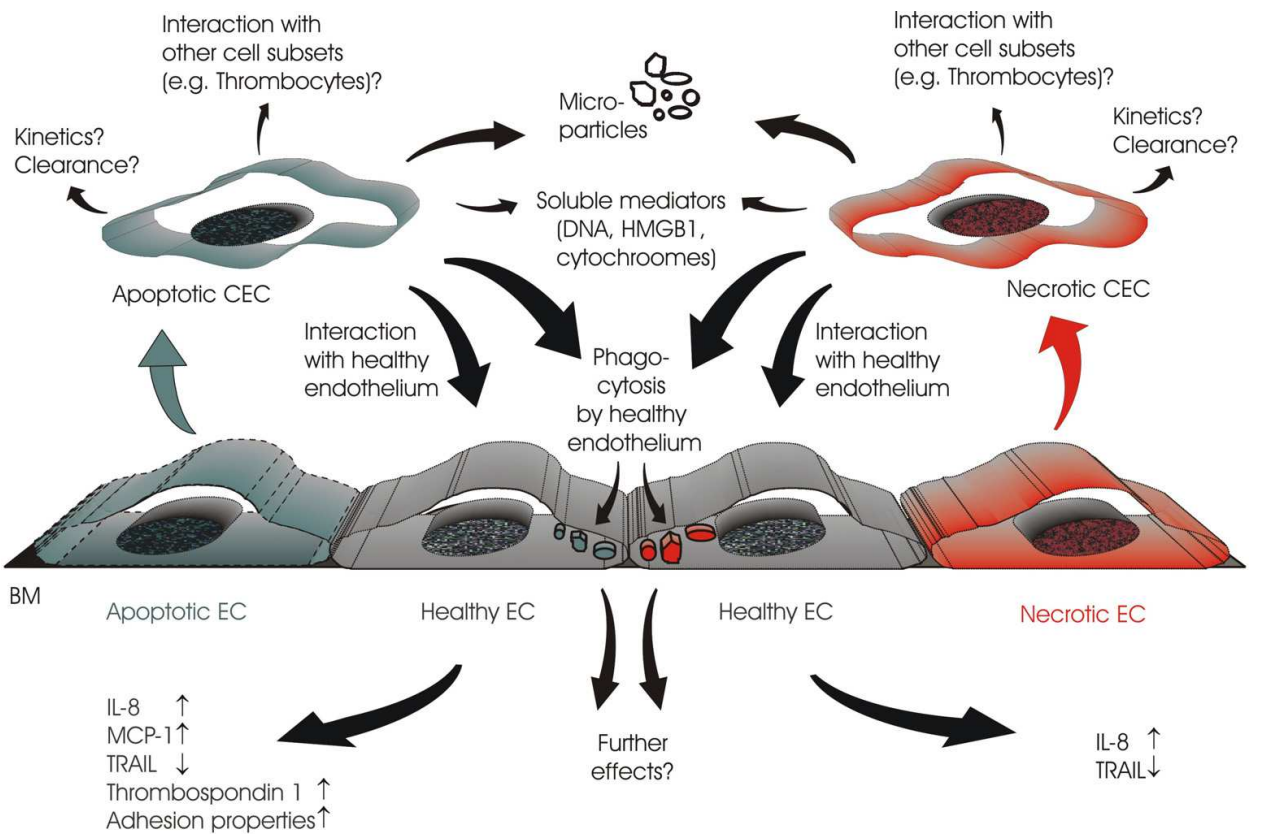


Fig. 1. Interactions of apoptotic and necrotic circulating endothelial cells with healthy endothelium; from <sup>100</sup>, with permission

6. Conclusion

Endothelial activation and damage is a crucial event during the pathogenesis of vasculitis. Not surprisingly, markers of such damage are detectable in peripheral blood. Several markers have been studied. Circulating endothelial cells are an established and reliable marker of vascular damage. Cell numbers do correlate with the activity of vascular disease and their use in a clinical setting is on the horizon. In comparison, endothelial microparticles are smaller and their presence may reflect a different stage of the inflammatory process. For both approaches, the lack of standardization remains a matter of particular concern and

further multi-centre efforts should be encouraged. Interactions of CEC with the healthy endothelium and other cells deserve further attention, as does the phenotype of CEC. Endothelial repair is another facet of the inflammatory process although, again, progress is hampered by lack of standardization. Taken together, all of these markers may be useful to assess vascular inflammation and repair in a clinical setting.

## 7. References

- [1] Garlanda C, Dejana E. (1997) Heterogeneity of endothelial cells. Specific markers. *ArteriosclerThromb VascBiol*; Vol. 17: pp. 1193-202. ISSN
- [2] Zycinska K, Wardyn KA, Zielonka TM, Krupa R, Lukas W. (2009) Clinical implications of serum thrombomodulin in PR3-ANCA-associated vasculitis. *Eur J Med Res*; Vol. 14 Suppl 4: pp. 268-70. ISSN 0949-2321 (Print) 0949-2321 (Linking)
- [3] Kumpers P, Hellpap J, David S, et al. (2009) Circulating angiopoietin-2 is a marker and potential mediator of endothelial cell detachment in ANCA-associated vasculitis with renal involvement. *Nephrol Dial Transplant*; Vol. 24: pp. 1845-50. ISSN 1460-2385 (Electronic) 0931-0509 (Linking)
- [4] Federici AB, Fox RI, Espinoza LR, Zimmerman TS. (1984) Elevation of von Willebrand factor is independent of erythrocyte sedimentation rate and persists after glucocorticoid treatment in giant cell arteritis. *Arthritis Rheum*; Vol. 27: pp. 1046-9. ISSN
- [5] Hergesell O, Andrassy K, Nawroth P. (1996) Elevated levels of markers of endothelial cell damage and markers of activated coagulation in patients with systemic necrotizing vasculitis. *ThrombHaemost*; Vol. 75: pp. 892-8. ISSN
- [6] Gabat S, Keller C, Kempe HP, et al. (1996) Plasma thrombomodulin: a marker for microvascular complications in diabetes mellitus. *Vasa*; Vol. 25: pp. 233-41. ISSN
- [7] Kozuka K, Kohriyama T, Nomura E, Ikeda J, Kajikawa H, Nakamura S. (2002) Endothelial markers and adhesion molecules in acute ischemic stroke--sequential change and differences in stroke subtype. *Atherosclerosis*; Vol. 161: pp. 161-8. ISSN
- [8] Makin AJ, Blann AD, Chung NA, Silverman SH, Lip GY. (2004) Assessment of endothelial damage in atherosclerotic vascular disease by quantification of circulating endothelial cells. Relationship with von Willebrand factor and tissue factor. *Eur Heart J*; Vol. 25: pp. 371-6. ISSN
- [9] Bruchfeld A, Wendt M, Bratt J, et al. (2011) High-mobility group box-1 protein (HMGB1) is increased in antineutrophilic cytoplasmic antibody (ANCA)-associated vasculitis with renal manifestations. *Mol Med*; Vol. 17: pp. 29-35. ISSN 1528-3658 (Electronic)1076-1551 (Linking)
- [10] Blann AD, Woywodt A, Bertolini F, et al. (2005) Circulating endothelial cells. Biomarker of vascular disease. *Thromb Haemost*; Vol. 93: pp. 228-35. ISSN
- [11] Woywodt A, Streiber F, de Groot K, Regelsberger H, Haller H, Haubitz M. (2003) Circulating endothelial cells as markers for ANCA-associated small-vessel vasculitis. *Lancet*; Vol. 361: pp. 206-10. ISSN
- [12] Dang A, Wang B, Li W, et al. (2000) Plasma endothelin-1 levels and circulating endothelial cells in patients with aortoarteritis. *Hypertens Res*; Vol. 23: pp. 541-4. ISSN

- [13] Nakatani K, Takeshita S, Tsujimoto H, Kawamura Y, Tokutomi T, Sekine I. (2003) Circulating endothelial cells in Kawasaki disease. *Clin Exp Immunol*; Vol. 131: pp. 536-40. ISSN
- [14] Clancy RM. (2000) Circulating endothelial cells and vascular injury in systemic lupus erythematosus. *Curr Rheumatol Rep*; Vol. 2: pp. 39-43. ISSN
- [15] Kutlay S, Calayoglu R, Boyvat A, et al. (2008) Circulating endothelial cells: a disease activity marker in Behcet's vasculitis? *Rheumatol Int*; Vol. 29: pp. 159-62. ISSN 0172-8172 (Print) 0172-8172 (Linking)
- [16] Erdbruegger U, Woywodt A, Kirsch T, Haller H, Haubitz M. (2006) Circulating endothelial cells as a prognostic marker in thrombotic microangiopathy. *Am J Kidney Dis*; Vol. 48: pp. 564-70. ISSN 1523-6838 (Electronic)
- [17] Haubitz M, Woywodt A. (2004) Circulating endothelial cells and vasculitis. *Intern Med*; Vol. 43: pp. 660-7. ISSN
- [18] Woywodt A, Goldberg C, Kirsch T, et al. (2005) Circulating endothelial cells in relapse and limited granulomatous disease due to ANCA-associated vasculitis. *Ann Rheum Dis*; Vol. 65: pp. 164-8. ISSN
- [19] Erdbruegger U, Haubitz M, Woywodt A. (2006) Circulating endothelial cells: A novel marker of endothelial damage. *Clin Chim Acta*; Vol. 373: pp. 17-26. ISSN
- [20] George F, Brisson C, Poncelet P, et al. (1992) Rapid isolation of human endothelial cells from whole blood using S-Endo1 monoclonal antibody coupled to immunomagnetic beads: demonstration of endothelial injury after angioplasty. *Thromb Haemost*; Vol. 67: pp. 147-53. ISSN
- [21] Woywodt A, Blann AD, Kirsch T, et al. (2006) Isolation and enumeration of circulating endothelial cells by immunomagnetic isolation: proposal of a definition and a consensus protocol. *J Thromb Haemost*; Vol. 4: pp. 671-7. ISSN
- [22] Woywodt A, Goldberg C, Scheer J, Regelsberger H, Haller H, Haubitz M. (2004) An improved assay for enumeration of circulating endothelial cells. *Ann Hematol*; Vol. 83: pp. 491-4. ISSN
- [23] CD146. Protein reviews on the web, 2003. (Accessed Jan 24, 2006, 2003, at <http://mpr.nci.nih.gov/prow/>.)
- [24] Woywodt A, Blann A, Kirsch T, Erdbruegger U, Haubitz M, Dignat-George F. (2006) Isolation and enumeration of circulating endothelial cells by immunomagnetic isolation: proposal of a definition and a consensus protocol. *J Thromb Haemost*; Vol. 4: pp. 671-7. ISSN
- [25] Rowand JL, Martin G, Doyle GV, et al. (2007) Endothelial cells in peripheral blood of healthy subjects and patients with metastatic carcinomas. *Cytometry A*; Vol. 71: pp. 105-13. ISSN 1552-4922 (Print)
- [26] Holmen C, Elsheikh E, Stenvinkel P, et al. (2005) Circulating inflammatory endothelial cells contribute to endothelial progenitor cell dysfunction in patients with vasculitis and kidney involvement. *J Am Soc Nephrol*; Vol. 16: pp. 3110-20. ISSN
- [27] Moroni G, Del Papa N, Moronetti LM, et al. (2005) Increased levels of circulating endothelial cells in chronic periaortitis as a marker of active disease. *Kidney Int*; Vol. 68: pp. 562-8. ISSN

- [28] Del Papa N, Colombo G, Fracchiolla N, et al. (2004) Circulating endothelial cells as a marker of ongoing vascular disease in systemic sclerosis. *Arthritis Rheum*; Vol. 50: pp. 1296-304. ISSN
- [29] Mancuso P, Rabascio C, Bertolini F. (2003) Strategies to investigate circulating endothelial cells in cancer. *Pathophysiol Haemost Thromb*; Vol. 33: pp. 503-6. ISSN
- [30] Mancuso P, Burlini A, Pruneri G, Goldhirsch A, Martinelli G, Bertolini F. (2001) Resting and activated endothelial cells are increased in the peripheral blood of cancer patients. *Blood*; Vol. 97: pp. 3658-61. ISSN
- [31] Khan SS, Solomon MA, McCoy JP, Jr. (2005) Detection of circulating endothelial cells and endothelial progenitor cells by flow cytometry. *Cytometry B Clin Cytom*; Vol. 64: pp. 1-8. ISSN 1552-4949 (Print) 1552-4949 (Linking)
- [32] Goon PK, Boos CJ, Stonelake PS, Blann AD, Lip GY. (2006) Detection and quantification of mature circulating endothelial cells using flow cytometry and immunomagnetic beads: a methodological comparison. *Thromb Haemost*; Vol. 96: pp. 45-52. ISSN 0340-6245 (Print) 0340-6245 (Linking)
- [33] Mancuso P, Antoniotti P, Quarna J, et al. (2009) Validation of a standardized method for enumerating circulating endothelial cells and progenitors: flow cytometry and molecular and ultrastructural analyses. *Clin Cancer Res*; Vol. 15: pp. 267-73. ISSN 1078-0432 (Print) 1078-0432 (Linking)
- [34] Duda DG, Cohen KS, Scadden DT, Jain RK. (2007) A protocol for phenotypic detection and enumeration of circulating endothelial cells and circulating progenitor cells in human blood. *Nat Protoc*; Vol. 2: pp. 805-10. ISSN 1750-2799 (Electronic)
- [35] Strijbos MH, Gratama JW, Kraan J, Lamers C, Bakker Md, Sleijfer S. (0000) Circulating endothelial cells in oncology: pitfalls and promises. *Br J Cancer*; Vol. 98: pp. 1731-5. ISSN 0007-0920
- [36] Mancuso P, Calleri A, Cassi C, et al. (2003) Circulating endothelial cells as a novel marker of angiogenesis. *Adv Exp Med Biol*; Vol. 522: pp. 83-97. ISSN
- [37] Jacques N, Vimond N, Conforti R, et al. (2008) Quantification of circulating mature endothelial cells using a whole blood four-color flow cytometric assay. *J Immunol Methods*; Vol. 337: pp. 132-43. ISSN 0022-1759 (Print) 0022-1759 (Linking)
- [38] Clarke LA, Shah V, Arrigoni F, et al. (2008) Quantitative detection of circulating endothelial cells in vasculitis: comparison of flow cytometry and immunomagnetic bead extraction. *J Thromb Haemost*; Vol. 6: pp. 1025-32. ISSN 1538-7836 (Electronic) 1538-7836 (Linking)
- [39] Widemann A, Sabatier F, Arnaud L, et al. (2008) CD146-based immunomagnetic enrichment followed by multiparameter flow cytometry: a new approach to counting circulating endothelial cells. *J Thromb Haemost*; Vol. 6: pp. 869-76. ISSN 1538-7836 (Electronic) 1538-7836 (Linking)
- [40] Woywodt A, Bahlmann FH, de Groot K, Haller H, Haubitz M. (2002) Circulating endothelial cells: Life, death and detachment of the endothelial cell layer. *Nephrol Dial Transplant*; Vol. 17: pp. 1728-30. ISSN
- [41] Ingber D. (1991) Extracellular matrix and cell shape: potential control points for inhibition of angiogenesis. *J Cell Biochem*; Vol. 47: pp. 236-41. ISSN



- [42] Oguey D, George PW, Ruegg C. (2000) Disruption of integrin-dependent adhesion and survival of endothelial cells by recombinant adenovirus expressing isolated beta integrin cytoplasmic domains. *Gene Ther*; Vol. 7: pp. 1292-303. ISSN
- [43] Grosjean J, Kiriakidis S, Reilly K, Feldmann M, Paleolog E. (2006) Vascular endothelial growth factor signalling in endothelial cell survival: A role for NFkappaB. *Biochem Biophys Res Commun*; Vol. 340: pp. 984-94. ISSN
- [44] Ballieux BE, Hiemstra PS, Klar-Mohamad N, et al. (1994) Detachment and cytolysis of human endothelial cells by proteinase 3. *Eur J Immunol*; Vol. 24: pp. 3211-5. ISSN
- [45] Boehme MW, Galle P, Stremmel W. (2002) Kinetics of thrombomodulin release and endothelial cell injury by neutrophil-derived proteases and oxygen radicals. *Immunology*; Vol. 107: pp. 340-9. ISSN
- [46] Harlan JM, Killen PD, Harker LA, Striker GE, Wright DG. (1981) Neutrophil-mediated endothelial injury in vitro mechanisms of cell detachment. *J Clin Invest*; Vol. 68: pp. 1394-403. ISSN
- [47] Ruegg C, Dormond O, Foletti A. (2002) Suppression of tumor angiogenesis through the inhibition of integrin function and signaling in endothelial cells: which side to target? *Endothelium*; Vol. 9: pp. 151-60. ISSN
- [48] Mutin M, Canavy I, Blann A, Bory M, Sampol J, Dignat-George F. (1999) Direct evidence of endothelial injury in acute myocardial infarction and unstable angina by demonstration of circulating endothelial cells. *Blood*; Vol. 93: pp. 2951-8. ISSN
- [49] Bull TM, Golpon H, Hebbel RP, et al. (2003) Circulating endothelial cells in pulmonary hypertension. *Thromb Haemost*; Vol. 90: pp. 698-703. ISSN
- [50] Lin Y, Weisdorf DJ, Solovey A, Hebbel RP. (2000) Origins of circulating endothelial cells and endothelial outgrowth from blood. *J Clin Invest*; Vol. 105: pp. 71-7. ISSN
- [51] Li M, Carpio DF, Zheng Y, et al. (2001) An essential role of the NF-kappa B/Toll-like receptor pathway in induction of inflammatory and tissue-repair gene expression by necrotic cells. *J Immunol*; Vol. 166: pp. 7128-35. ISSN
- [52] Botto M, Dell'Agnola C, Bygrave AE, et al. (1998) Homozygous C1q deficiency causes glomerulonephritis associated with multiple apoptotic bodies. *Nat Genet*; Vol. 19: pp. 56-9. ISSN
- [53] Kirsch T, Woywodt A, Beese M, et al. (2007) Engulfment of apoptotic cells by microvascular endothelial cells induces proinflammatory responses. *Blood*; Vol. 109: pp. 2854-62. ISSN 0006-4971 (Print)
- [54] Chen Q, Stone PR, McCowan LM, Chamley LW. (2006) Phagocytosis of necrotic but not apoptotic trophoblasts induces endothelial cell activation. *Hypertension*; Vol. 47: pp. 116-21. ISSN
- [55] Yang JJ, Preston GA, Alcorta DA, et al. (2002) Expression profile of leukocyte genes activated by anti-neutrophil cytoplasmic autoantibodies (ANCA). *Kidney Int*; Vol. 62: pp. 1638-49. ISSN
- [56] Mayet W, Schwarting A, Barreiros AP, Schlaak J, Neurath M. (1999) Anti-PR-3 antibodies induce endothelial IL-8 release. *Eur J Clin Invest*; Vol. 29: pp. 973-9. ISSN



- [57] Isenberg JS, Martin-Manso G, Maxhimer JB, Roberts DD. (2009) Regulation of nitric oxide signalling by thrombospondin 1: implications for anti-angiogenic therapies. *Nat Rev Cancer*; Vol. 9: pp. 182-94. ISSN
- [58] Bonnefoy A, Moura R, Hoylaerts MF. (2008) The evolving role of thrombospondin-1 in hemostasis and vascular biology. *Cell Mol Life Sci*; Vol. 65: pp. 713-27. ISSN
- [59] Kirsch T, Woywodt A, Klose J, et al. (2009) Endothelial-derived thrombospondin-1 promotes macrophage recruitment and apoptotic cell clearance. *J Cell Mol Med*; Vol. Jun 5. [Epub ahead of print]: pp. ISSN
- [60] Brogan PA, Shah V, Brachet C, et al. (2004) Endothelial and platelet microparticles in vasculitis of the young. *Arthritis Rheum*; Vol. 50: pp. 927-36. ISSN
- [61] Chironi GN, Boulanger CM, Simon A, Dignat-George F, Freyssinet JM, Tedgui A. (2009) Endothelial microparticles in diseases. *Cell Tissue Res*; Vol. 335: pp. 143-51. ISSN 1432-0878 (Electronic)
- [62] Burnier L, Fontana P, Kwak BR, Angelillo-Scherrer A. (2009) Cell-derived microparticles in haemostasis and vascular medicine. *Thromb Haemost*; Vol. 101: pp. 439-51. ISSN 0340-6245 (Print)
- [63] Jy W, Horstman LL, Jimenez JJ, et al. (2004) Measuring circulating cell-derived microparticles. *J Thromb Haemost*; Vol. 2: pp. 1842-51. ISSN
- [64] Hamilton KK, Hattori R, Esmon CT, Sims PJ. (1990) Complement proteins C5b-9 induce vesiculation of the endothelial plasma membrane and expose catalytic surface for assembly of the prothrombinase enzyme complex. *J Biol Chem*; Vol. 265: pp. 3809-14. ISSN 0021-9258 (Print)
- [65] Erdbruegger U, Grossheim M, Hertel B, et al. (2008) Diagnostic role of endothelial microparticles in vasculitis. *Rheumatology (Oxford)*; Vol. 47: pp. 1820-5. ISSN 1462-0332 (Electronic)
- [66] Clarke LA, Hong Y, Eleftheriou D, et al. (2010) Endothelial injury and repair in systemic vasculitis of the young. *Arthritis Rheum*; Vol. 62: pp. 1770-80. ISSN 1529-0131 (Electronic) 0004-3591 (Linking)
- [67] Daniel L, Fakhouri F, Joly D, et al. (2006) Increase of circulating neutrophil and platelet microparticles during acute vasculitis and hemodialysis. *Kidney Int*; Vol. 69: pp. 1416-23. ISSN 0085-2538 (Print) 0085-2538 (Linking)
- [68] Faure V, Dou L, Sabatier F, et al. (2006) Elevation of circulating endothelial microparticles in patients with chronic renal failure. *J Thromb Haemost*; Vol. 4: pp. 566-73. ISSN
- [69] Ardoin SP, Shanahan JC, Pisetsky DS. (2007) The role of microparticles in inflammation and thrombosis. *Scand J Immunol*; Vol. 66: pp. 159-65. ISSN
- [70] Mesri M, Altieri DC. (1998) Endothelial cell activation by leukocyte microparticles. *J Immunol*; Vol. 161: pp. 4382-7. ISSN
- [71] Mesri M, Altieri DC. (1999) Leukocyte microparticles stimulate endothelial cell cytokine release and tissue factor induction in a JNK1 signaling pathway. *J Biol Chem*; Vol. 274: pp. 23111-8. ISSN
- [72] Lacroix R, Sabatier F, Mialhe A, et al. (2007) Activation of plasminogen into plasmin at the surface of endothelial microparticles: a mechanism that

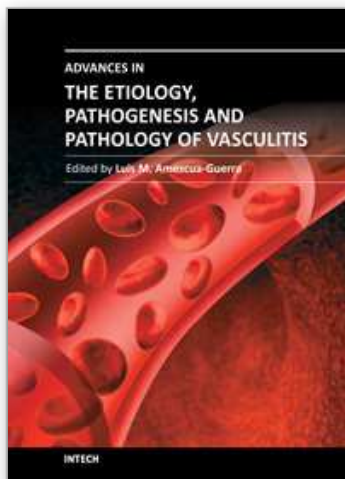
- modulates angiogenic properties of endothelial progenitor cells in vitro. *Blood*; Vol.: pp. ISSN
- [73] Sabatier F, Roux V, Anfosso F, Camoin L, Sampol J, Dignat-George F. (2002) Interaction of endothelial microparticles with monocytic cells in vitro induces tissue factor-dependent procoagulant activity. *Blood*; Vol. 99: pp. 3962-70. ISSN
  - [74] Burkart M, Glover S, McGregor JAG, et al. Microparticle Tissue Factor Activity Is Increased in PR3-ANCA Vasculitis Patients with Active Disease.
  - [75] Abid Hussein MN, Boing AN, Sturk A, Hau CM, Nieuwland R. (2007) Inhibition of microparticle release triggers endothelial cell apoptosis and detachment. *Thromb Haemost*; Vol. 98: pp. 1096-107. ISSN 0340-6245 (Print)
  - [76] Barry OP, Pratico D, Savani RC, FitzGerald GA. (1998) Modulation of monocyte-endothelial cell interactions by platelet microparticles. *J Clin Invest*; Vol. 102: pp. 136-44. ISSN
  - [77] Hristov M, Erl W, Linder S, Weber PC. (2004) Apoptotic bodies from endothelial cells enhance the number and initiate the differentiation of human endothelial progenitor cells in vitro. *Blood*; Vol. 104: pp. 2761-6. ISSN 0006-4971 (Print) 0006-4971 (Linking)
  - [78] Forlow SB, McEver RP, Nollert MU. (2000) Leukocyte-leukocyte interactions mediated by platelet microparticles under flow. *Blood*; Vol. 95: pp. 1317-23. ISSN
  - [79] Woywodt A, Erdbruegger U, Haubitz M. (2006) Circulating endothelial cells and endothelial progenitor cells after angioplasty: news from the endothelial rescue squad. *J Thromb Haemost*; Vol. 4: pp. 976-8. ISSN
  - [80] Dzau VJ, Gnechchi M, Pachori AS, Morello F, Melo LG. (2005) Therapeutic potential of endothelial progenitor cells in cardiovascular diseases. *Hypertension*; Vol. 46: pp. 7-18. ISSN
  - [81] Mobius-Winkler S, Hollriegel R, Schuler G, Adams V. (2009) Endothelial progenitor cells: implications for cardiovascular disease. *Cytometry A*; Vol. 75: pp. 25-37. ISSN 1552-4930 (Electronic)
  - [82] Fadini GP, Baesso I, Albiero M, Sartore S, Agostini C, Avogaro A. (2008) Technical notes on endothelial progenitor cells: ways to escape from the knowledge plateau. *Atherosclerosis*; Vol. 197: pp. 496-503. ISSN
  - [83] Hirschi KK, Ingram DA, Yoder MC. (2008) Assessing identity, phenotype, and fate of endothelial progenitor cells. *Arterioscler Thromb Vasc Biol*; Vol. 28: pp. 1584-95. ISSN 1524-4636 (Electronic)
  - [84] Eilken HM, Nishikawa S, Schroeder T. (2009) Continuous single-cell imaging of blood generation from haemogenic endothelium. *Nature*; Vol. 457: pp. 896-900. ISSN 1476-4687 (Electronic)
  - [85] de Groot K, Goldberg C, Bahlmann FH, et al. (2007) Vascular endothelial damage and repair in antineutrophil cytoplasmic antibody-associated vasculitis. *Arthritis Rheum*; Vol. 56: pp. 3847-53. ISSN 0004-3591 (Print)

- [86] Avouac J, Juin F, Wipff J, et al. (2008) Circulating endothelial progenitor cells in systemic sclerosis: association with disease severity. *Ann Rheum Dis*; Vol. 67: pp. 1455-60. ISSN
- [87] Zavada J, Kideryova L, Pytlik R, Vankova Z, Tesar V. (2008) Circulating endothelial progenitor cells in patients with ANCA-associated vasculitis. *Kidney Blood Press Res*; Vol. 31: pp. 247-54. ISSN
- [88] Zavada J, Kideryova L, Pytlik R, Hruskova Z, Tesar V. (2009) Reduced number of endothelial progenitor cells is predictive of early relapse in anti-neutrophil cytoplasmic antibody-associated vasculitis. *Rheumatology (Oxford)*; Vol. 48: pp. 1197-201. ISSN 1462-0332 (Electronic) 1462-0324 (Linking)
- [89] Fadini GP, Tognon S, Rodriguez L, et al. (2009) Low levels of endothelial progenitor cells correlate with disease duration and activity in patients with Behcet's disease. *Clin Exp Rheumatol*; Vol. 27: pp. 814-21. ISSN 0392-856X (Print) 0392-856X (Linking)
- [90] Xu MG, Men LN, Zhao CY, et al. (2010) The number and function of circulating endothelial progenitor cells in patients with Kawasaki disease. *Eur J Pediatr*; Vol. 169: pp. 289-96. ISSN 1432-1076 (Electronic) 0340-6199 (Linking)
- [91] Woywodt A, Scheer J, Hambach L, et al. (2004) Circulating endothelial cells as a marker of endothelial damage in allogeneic hematopoietic stem cell transplantation. *Blood*; Vol. 103: pp. 3603-5. ISSN
- [92] Delorme B, Basire A, Gentile C, et al. (2005) Presence of endothelial progenitor cells, distinct from mature endothelial cells, within human CD146+ blood cells. *Thromb Haemost*; Vol. 94: pp. 1270-9. ISSN
- [93] Padfield GJ, Tura O, Haack ML, et al. (2010) Circulating endothelial progenitor cells are not affected by acute systemic inflammation. *Am J Physiol Heart Circ Physiol*; Vol. 298: pp. H2054-61. ISSN 1522-1539 (Electronic) 0363-6135 (Linking)
- [94] Hohenstein B, Kuo MC, Addabbo F, et al. (2010) Enhanced progenitor cell recruitment and endothelial repair after selective endothelial injury of the mouse kidney. *Am J Physiol Renal Physiol*; Vol. 298: pp. F1504-14. ISSN 1522-1466 (Electronic) 0363-6127 (Linking)
- [95] Bahlmann FH, De Groot K, Spandau JM, et al. (2004) Erythropoietin regulates endothelial progenitor cells. *Blood*; Vol. 103: pp. 921-6. ISSN 0006-4971 (Print)
- [96] Matsumura M, Fukuda N, Kobayashi N, et al. (2009) Effects of atorvastatin on angiogenesis in hindlimb ischemia and endothelial progenitor cell formation in rats. *J Atheroscler Thromb*; Vol. 16: pp. 319-26. ISSN 1880-3873 (Electronic)
- [97] Smadja DM, d'Audigier C, Bieche I, et al. (2011) Thrombospondin-1 is a plasmatic marker of peripheral arterial disease that modulates endothelial progenitor cell angiogenic properties. *Arterioscler Thromb Vasc Biol*; Vol. 31: pp. 551-9. ISSN 1524-4636 (Electronic) 1079-5642 (Linking)
- [98] Rossig L, Urbich C, Bruhl T, et al. (2005) Histone deacetylase activity is essential for the expression of HoxA9 and for endothelial commitment of progenitor cells. *J Exp Med*; Vol. 201: pp. 1825-35. ISSN 0022-1007 (Print)

- [99] Woywodt A, Kirsch T, Haubitz M. (2008) Circulating endothelial cells in renal disease: markers and mediators of vascular damage. *Nephrol Dial Transplant*; Vol. 23: pp. 7-10. ISSN
- [100] Haubitz M, Dhaygude A, Woywodt A. (2009) Mechanisms and markers of vascular damage in ANCA-associated vasculitis. *Autoimmunity*; Vol. 42: pp. 605-14. ISSN 1607-842X (Electronic)

IntechOpen

IntechOpen



## **Advances in the Etiology, Pathogenesis and Pathology of Vasculitis**

Edited by Dr. Luis M Amezcua-Guerra

ISBN 978-953-307-651-5

Hard cover, 438 pages

**Publisher** InTech

**Published online** 17, October, 2011

**Published in print edition** October, 2011

This book represents the culmination of the efforts of a group of outstanding experts in vasculitis from all over the world, who have endeavored to devote their work to this book by keeping both the text and the accompanying figures and tables lucid and memorable. Here, you will find an amalgam between evidence-based medicine to one based on eminence, through an exciting combination of original contributions, structured reviews, overviews, state-of-the-art articles, and even the proposal of novel pathogenetic models of disease. The book contains contributions on the etiology and pathology of vasculitis, the potential role of endothelial cells and cytokines in vascular damage and repair as well as summaries of the latest information on several primary and secondary vasculitis syndromes. It also covers selected topics such as organ-specific vasculitic involvement and quality of life issues in vasculitis. The editor and each of the authors invite you to share this journey through one of the most exciting fields of the medicine, the world of Vasculitis.

### **How to reference**

In order to correctly reference this scholarly work, feel free to copy and paste the following:

Uta Erdbruegger, Ajay Dhaygude and Alexander Woywodt (2011). Markers of Vascular Damage and Repair, *Advances in the Etiology, Pathogenesis and Pathology of Vasculitis*, Dr. Luis M Amezcua-Guerra (Ed.), ISBN: 978-953-307-651-5, InTech, Available from: <http://www.intechopen.com/books/advances-in-the-etiology-pathogenesis-and-pathology-of-vasculitis/markers-of-vascular-damage-and-repair>

**INTECH**  
open science | open minds

### **InTech Europe**

University Campus STeP Ri  
Slavka Krautzeka 83/A  
51000 Rijeka, Croatia  
Phone: +385 (51) 770 447  
Fax: +385 (51) 686 166  
[www.intechopen.com](http://www.intechopen.com)

### **InTech China**

Unit 405, Office Block, Hotel Equatorial Shanghai  
No.65, Yan An Road (West), Shanghai, 200040, China  
中国上海市延安西路65号上海国际贵都大饭店办公楼405单元  
Phone: +86-21-62489820  
Fax: +86-21-62489821



© 2011 The Author(s). Licensee IntechOpen. This is an open access article distributed under the terms of the [Creative Commons Attribution 3.0 License](https://creativecommons.org/licenses/by/3.0/), which permits unrestricted use, distribution, and reproduction in any medium, provided the original work is properly cited.

IntechOpen

IntechOpen