

We are IntechOpen, the world's leading publisher of Open Access books Built by scientists, for scientists

6,900

Open access books available

186,000

International authors and editors

200M

Downloads

Our authors are among the

154

Countries delivered to

TOP 1%

most cited scientists

12.2%

Contributors from top 500 universities



WEB OF SCIENCE™

Selection of our books indexed in the Book Citation Index
in Web of Science™ Core Collection (BKCI)

Interested in publishing with us?
Contact book.department@intechopen.com

Numbers displayed above are based on latest data collected.
For more information visit www.intechopen.com



Cellular and Neuronal Aspects in Aortic Stenosis

J. Ker¹ and WFP Van Heerden²

¹Physician, University of Pretoria, Pretoria,

²Pathologist, University of Pretoria, Pretoria,
South Africa

1. Introduction

For quite some time the physiological approach to cardiac valve function held the belief that these are purely passive structures merely moving in response to changes in transvalvular pressure generated by atrial and ventricular contractions ^{1, 2, 3}. Today, this “passive hypothesis” is being challenged as numerous studies have shown that mammalian cardiac valves are capable of independent contraction during various stages of the cardiac cycle ^{1, 4, 5}. In order to understand this concept and the pathophysiological implications for valvular disorders one would need to understand the cellular components and appreciate the neural network innervating the diverse cellular milieu of the cardiac valve as we understand it today.

The diverse cellular population of the aortic valve, together with its neuronal network will be discussed in order to clarify the cellular and neuronal aspects of the complex and still incompletely understood process of aortic stenosis.

2. Macro structure of the aortic valve

As a unit, the aortic valve is composed of four parts: the aortic annulus, the aortic valvular cusps, the sinuses of Valsalva and the sinotubular junction ³. The three semi-lunar cusps are attached at their base to a crown-shaped annulus ³. The interaction between the cusps and the root is extremely important to ensure adequate coronary blood flow. Proper closure of the cusps in diastole helps to preserve the shape of the aortic root and this ensures the creation of vortices of blood flow in the sinuses of Valsalva which is a major determinant of coronary blood flow ³.

The aortic cusps are composed of three layers: the fibrosa, the spongiosa and the ventricularis ³. The fibrosa lines the aortic side and is rich in collagen fibers, whereas the ventricularis lines the ventricular side and is rich in elastin fibers ^{3, 6}. The spongiosa lies between these two layers and is composed primarily of proteoglycans ^{3, 6}.

3. Cellular components of the aortic cusps

Both sides of the aortic valve cusps, the fibrosa and ventricularis, are lined by endothelial cells ^{1, 2, 3}. These valvular endothelial cells are able to respond to stress placed on the cusps,

particularly shear stress and can produce several vasoactive mediators, such as nitric oxide, endothelins and prostaglandins ^{1, 7, 8}, thus translating mechanical stimuli into biological responses, referred to as mechanotransduction ³. The actual release of these various vasoactive mediators can be effected by neurotransmitters such as acetylcholine and substance P, released by nerve endings innervating the valvular cusps ^{7, 8}. These substances released by the endothelium can in turn stimulate the local nerve terminals and elicit various reflex responses ^{1, 9}. The role of this “endothelium-cusp-nerve interaction” in health and disease is an interesting and yet insufficiently explained arena in the healthy and diseased aortic valve.

Below the layer of endothelial cells lining the outer and inner layer of the aortic cusps (the fibrosa and ventricularis), the extracellular matrix is found, composed of elastin, collagen and proteoglycans ¹⁰. In addition to the elastin, collagen and proteoglycans in this extracellular matrix, a population of valve interstitial cells can be found ^{2, 3}. These consist of fibroblasts, smooth muscle cells and myofibroblasts ^{2, 3, 11}. The proportion of these different cells comprising the interstitial cell component will depend on the condition and state of health of the valve ². These cells possess important secretory and proliferative properties to repair and maintain the extracellular matrix ^{2, 3}. They also have contractile properties and express the same structural genes as cardiac muscle, such as cardiac troponin T, I and C, cardiac myosin light chain and beta myosin heavy chain ^{2, 12}. Immunohistological studies have shown that almost 60% of aortic valve interstitial cells can express alpha-smooth muscle actin ^{2, 13}.

The most recently identified cell type in the aortic valve is a population of resident stem cells which lie within the cusps ^{3, 14}. These cells are hematopoietic in origin with later mobilization towards the valve cusps ¹⁵.

The human aortic valve is an avascular structure, but is innervated by a network of afferent and efferent nerves ³.

4. The aortic neural network

The neural innervation of the aortic valve arise from two sources, the ventricular endocardial plexus ¹ and the aortic adventitial wall ¹⁶. These nerves are found in the entire leaflet, except at the coapting edge ¹. Compared to the two coronary leaflets, the noncoronary leaflet displays an attenuated density of innervation and the density of innervation declines in all the leaflets with advancing age ¹. This decline in valvular neural innervation with age seems to be limited to the aortic valve ¹. It seems that each cardiac valve is independently innervated with no nerve fibers extending between valves ². The thin aortic nerves display a circumferential pattern within each leaflet ^{2, 17}. Morphologically and neurochemically these valvular nerve endings appear similar to the nerve endings found in the epicardium and endocardium of the human heart ^{1, 18}. Aortic nerve terminals has been found to express immunoreactivity for tyrosine hydroxylase, neuropeptide Y, acetylcholinesterase, substance P and vasoactive intestinal peptide (VIP) ^{1, 2, 19}. These various neurotransmitters also have neuromodulatory effects, regulating the activity of several populations of neurons in the valve ².

Thus, it is clear that there exists a rich cellular milieu inside the cusps of the aortic valve, with a rich supply of nerve endings, each one releasing neurotransmitters with diverse

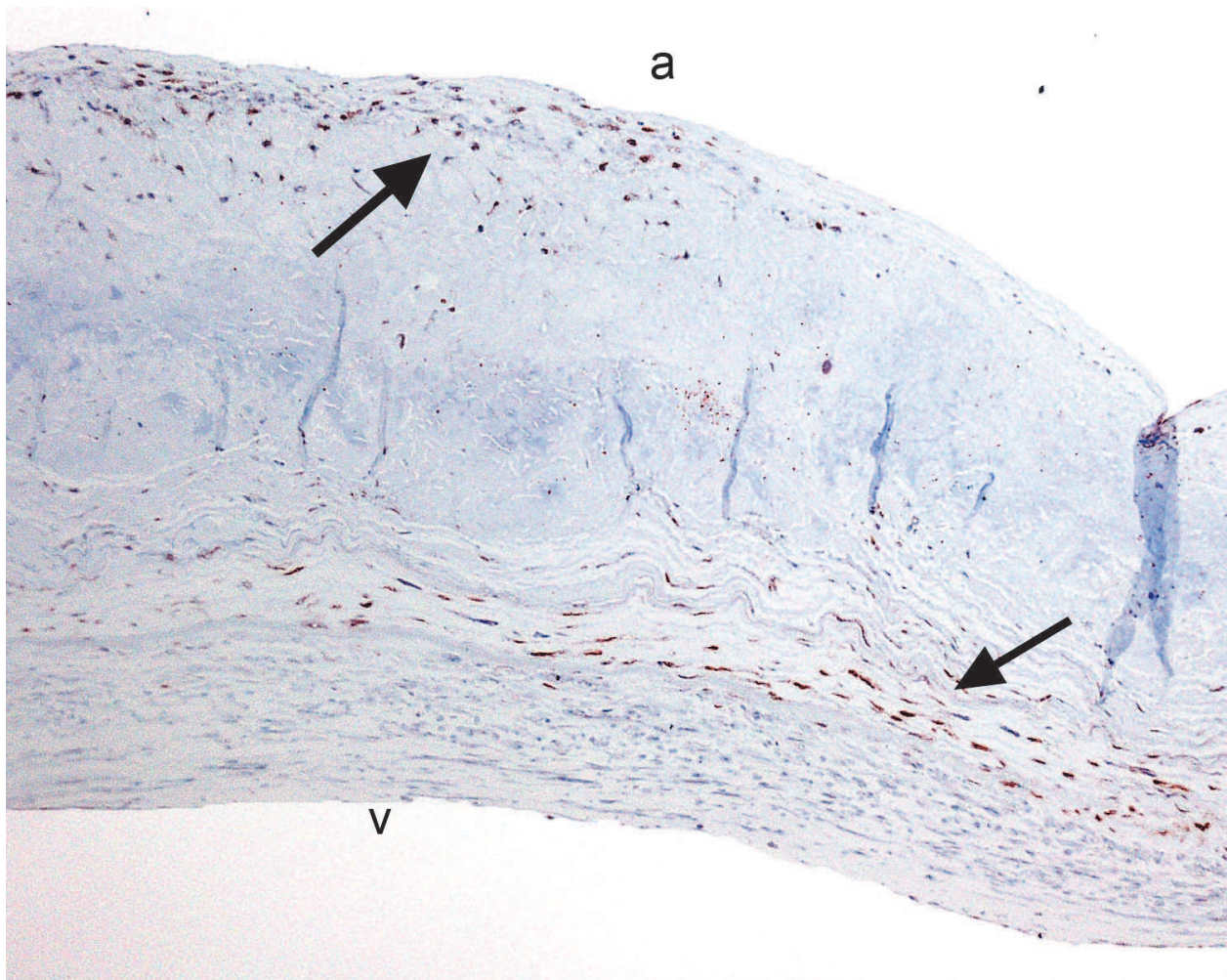


Fig. 1. S-100 staining of a stenotic valve shows the presence of positive spindle shaped cells suggestive of Schwann cells (arrows). (original magnification X 100).

physiological effects, effecting a complex array of contractile, secretory and homeostatic actions². (Fig. 1). The aortic valve can thus be seen as a structure that is regulated by a local neural network very similar to the gastrointestinal tract, bronchial tree and blood vessels².

5. Diverse cellular changes in aortic stenosis

A cell not seen in the normal aortic valve is the osteoblast. However, during the inflammatory process leading to ultimate aortic stenosis, aortic valve myofibroblasts may differentiate into osteoblasts and thus contribute towards valve calcification²⁰. (Fig 2).

Normal aortic valves are avascular and the oxygen demand of the cellular milieu is supplied by diffusion²¹. However, in the stenotic aortic valve a vascularization process is part of the pathogenesis of aortic stenosis²². (Fig 3).

The presence of myofibroblasts is associated with expression of alpha smooth muscle actin and osteoblastic markers such as osteocalcin and bone sialoprotein²³. This contributes to fibrosis of the leaflets and the formation of calcified nodules²³. Distinction between smooth muscle cells and myofibroblasts is difficult as both cell types express alpha-smooth muscle actin. It is possible to distinguish between these two groups of cells with h-caldesmon



Fig. 2. Low power photomicrograph of a stenotic aortic valve shows the presence of calcifications (arrows) on the aortic side (a) of the valve (original magnification X40).

immunohistochemical evaluation. H-caldesmon is specific for smooth muscle cells and do not react with myofibroblasts ²⁴. (Figs 4 & 5).

6. Possible future therapeutic implications of cellular and neuronal aspects of aortic stenosis

From the preceding discussion it is clear that there are numerous possibilities for the development of new therapeutic agents in order to arrest the progression of the complex process of aortic stenosis. In the early stages the increase in smooth muscle cells and myofibroblasts may be inhibited by yet to be discovered inhibitors of differentiation.

The process of angiogenesis in the valve leaflet may be blocked, as well as the differentiation of valvular myofibroblasts into osteoblasts with subsequent calcification.

It is also possible that the still incompletely understood effects of neuronal stimulation of the valvular interstitial cells may play a causal role in the initial process of aortic stenosis and that these neurons may lend themselves susceptible to future inhibition by therapeutic agents.

Lastly, the possible therapeutic role of native stem cells inside the valvular cusps are endless and only the future will tell.

In conclusion, it can be said that the possible future therapy of the process of aortic stenosis may become a purely medical one, with surgery limited to cases discovered in the end stage of this complex process.

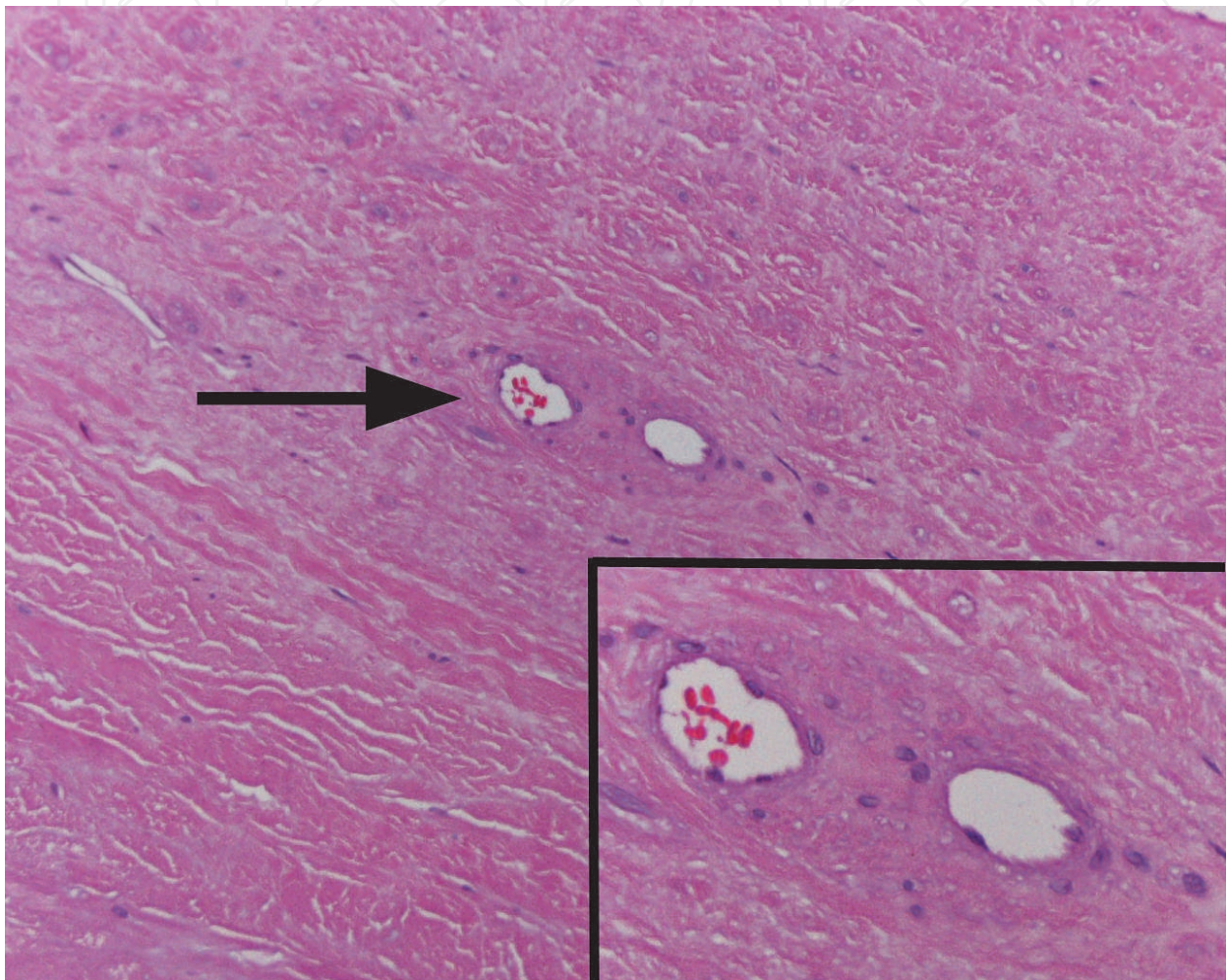


Fig. 3. Small blood vessels (arrow) in a stenotic aortic valve. (original magnification X 100). Inset: Higher magnification of the blood vessels. (original magnification X 200).

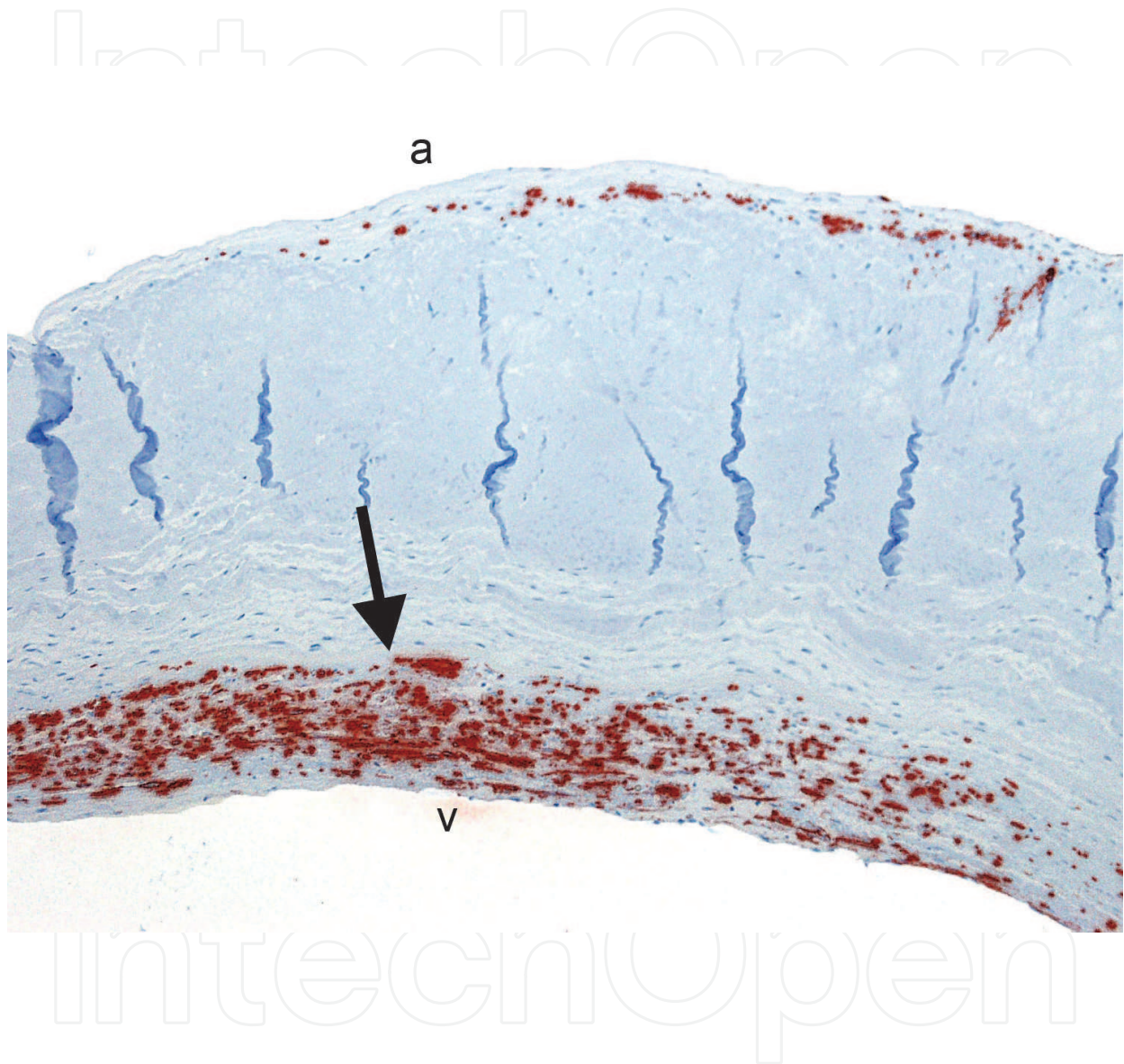


Fig. 4. Immunohistochemical staining of a decalcified stenotic aortic valve with smooth muscle actin (SMA) shows the presence of numerous positive cells (smooth muscle cells and myofibroblasts) (arrow) on the ventricular side (v) of the valve. Fewer positive cells are present on the aortic side (a). (original magnification X 100).

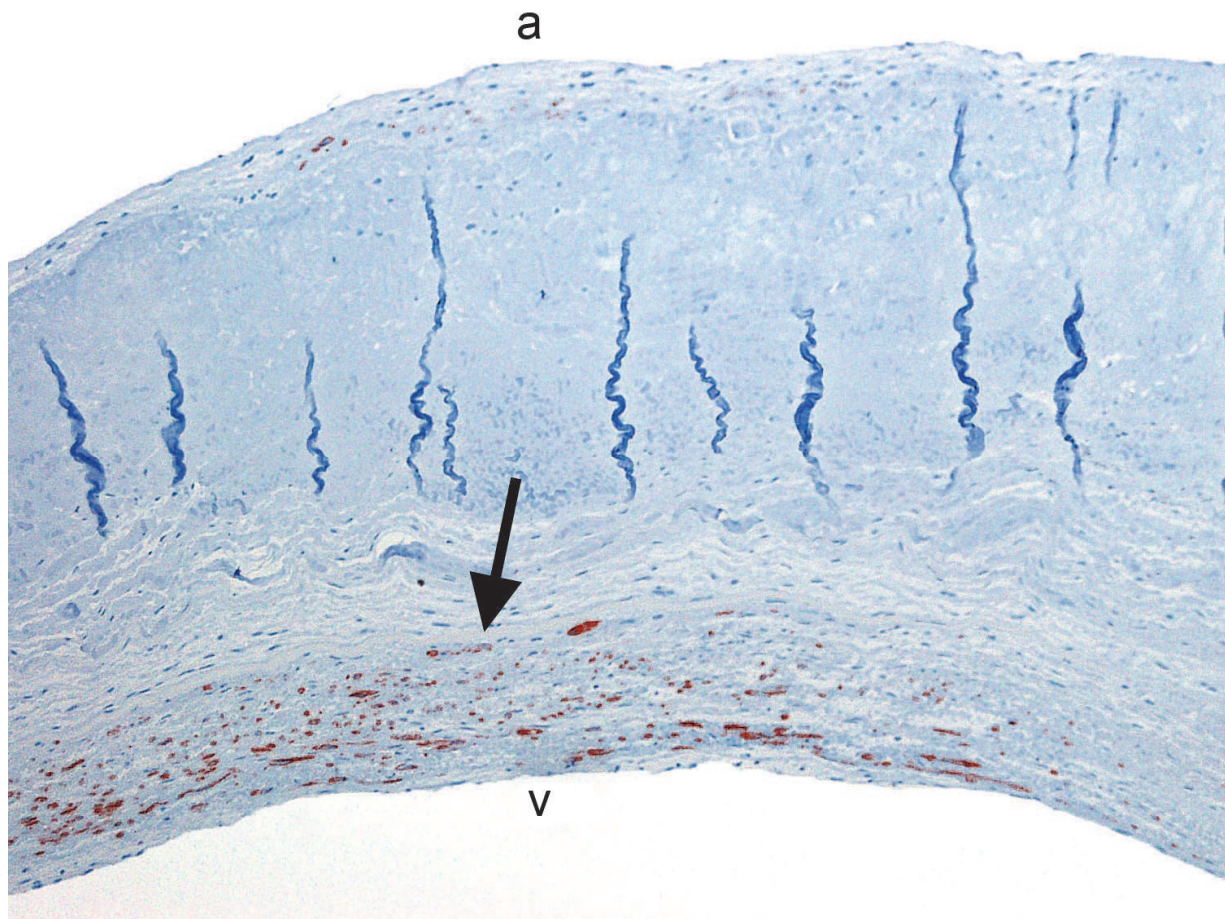
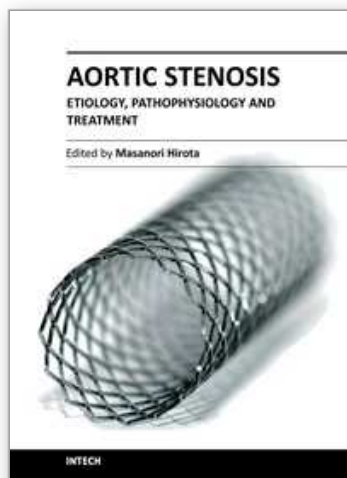


Fig. 5. H-caldesmon immunohistochemical stain (specific for smooth muscle cells) of the same area as in Fig. 4 demonstrates the portion of SMA positive cells that are smooth muscle cells (arrow). The SMA positive cells that did not stain with h-caldesmon are myofibroblastic in nature. (original magnification X 100).

7. References

- [1] Marron K, Yacoub MH, Polak JM, Sheppard MN, Fagan D, Whitehead BF, de Leval MR, Anderson RH, Wharton J. Innervation of human atrioventricular and arterial valves. *Circulation* 1996; 94:368-375.
- [2] El-Hamamsy I, Yacoub MH, Chester AH. Neuronal regulation of aortic valve cusps. *Current Vascular Pharmacology* 2009; 7:40-46.
- [3] El-Hamamsy I, Chester AH, Yacoub MH. Cellular regulation of the structure and function of aortic valves. *Journal of Advanced Research* 2010; 1:5-12.
- [4] Braunwald E, Rockoff SD, Newland-Oldham H Jr, Ross J Jr. Effective closure of the mitral valve without atrial systole. *Circulation* 1966; 33: 404-409.
- [5] Sonnenblick EH, Napolitano LM, Daggett WM, Cooper T. An intrinsic neuromuscular basis for mitral valve motion in the dog. *Circ Res.* 1972; 31:417-430.
- [6] Stella JA, Sacks MS. On the biaxial mechanical properties of the layers of the aortic valve leaflet. *J Biomech Eng* 2007; 129(5):757-766.
- [7] Ku DD, Nelson JM, Caulfield JB, Winn MJ. Release of endothelium relaxing factors from canine cardiac valves. *J Cardiovasc Pharmacol.* 1990; 16:212-218.

- [8] Siney L, Lewis MJ. Nitric oxide release from porcine mitral valves. *Cardiovasc Res.* 1993; 27: 1657-1661.
- [9] Hainsworth R. Reflexes from the heart. *Physiol Rev.* 1991; 71:617-658.
- [10] Yacoub MH, Cohn LH. Novel approaches to cardiac valve repair: from structure to function: part I. *Circulation* 2004; 109(8):942-950.
- [11] Taylor PM, Batten P, Brand NJ, Thomas PS, Yacoub MH. The cardiac valve interstitial cell. *Int J Biochem Cell Biol.* 2003; 35(2):113-118.
- [12] Roy A, Brand NJ, Yacoub MH. Molecular characterization of interstitial cells isolated from human heart valves. *J Heart Valve Dis* 2000; 9:459-464; discussion 64-65.
- [13] Taylor PM, Allen SP, Yacoub MH. Phenotypic and functional characterization of interstitial cells from human heart valves, pericardium and skin. *J Heart Valve Dis* 2000; 9:150-158.
- [14] Chen JH, Yip CYY, Sone ED, Simmons CA. Identification and characterization of aortic valve mesenchymal progenitor cells with robust osteogenic calcification potential. *Am J Pathol* 2009; 174:1109-1119.
- [15] Visconti RP, Ebihara Y, LaRue AC, Fleming PA, McQuinn TC, Masuya M. An in vivo analysis of hematopoietic stem cell potential: hematopoietic origin of cardiac valve interstitial cells. *Circ Res* 2006; 98(5): 690-696.
- [16] Kawano H, Shirai T, Kawano Y, Okada R. Morphological study of vagal innervation in human semilunar valves using a histochemical method. *Jpn Circ J* 1996; 60: 62-66.
- [17] De Biasi S, Vitellaro-Zuccarello L. Intrinsic innervation of porcine semilunar heart valves. *Anat Embryol (Berl)* 1982; 165: 71-79.
- [18] Marron K, Wharton J, Sheppard MN, Fagan D, Royston D, Kuhn DM, de Leval MR, Whitehead B, Anderson RH, Polak JM. Distribution, morphology and neurochemistry of endocardial and epicardial nerve terminal arborizations in the human heart. *Circulation* 1995; 92: 2343-2351.
- [19] Steele PA, Gibbins IL, Morris JL. Projections of intrinsic cardiac neurons to different targets in the guinea-pig heart. *J Auton Nerv Syst* 1996; 56: 191-200.
- [20] Yu PJ, Skolnick A, Ferrari G, Heretis K, Mignatti P, Pintucci G, Rosenzweig B, Diaz-Cartelle J, Kronzon I, Perk G, Pass HI, Galloway AC, Grossi EA, Grau JB. Correlation between plasma osteopontin levels and aortic valve calcification: potential insights into the pathogenesis of aortic valve calcification and stenosis. *Journal of Thoracic and Cardiovascular Surgery* 2009; 138(1): 196-199.
- [21] Hammon JW (Jr), O'Sullivan MJ, Oury J, Fosburg RG. Allograft cardiac valves. A view through the scanning electron microscope. *Journal of Thoracic and Cardiovascular Surgery* 1974; 68: 352-360.
- [22] Chalajour F, Treede H, Ebrahimnejad A, Lauke H, Reichenspurner H, Ergun S. Angiogenic activation of valvular endothelial cells in aortic valve stenosis. *Experimental Cell Research* 2004; 298: 455-464.
- [23] Benton JA, Kern HB, Leinwand LA, Mariner PD, Anseth KS. Statins block calcific nodule formation of valvular interstitial cells by inhibiting alpha-smooth muscle actin expression. *Arterioscler Thromb Vasc Biol.* 2009; 29: 1950-1957.
- [24] Ceballos KM, Nielsen GP, Selig MK, O'Connell JX. Is anti-h-caldesmon useful for distinguishing smooth muscle and myofibroblastic tumors? An immunohistochemical study. *Am J Clin Pathol* 2000; 114: 746-753.



Aortic Stenosis - Etiology, Pathophysiology and Treatment

Edited by Dr. Masanori Hirota

ISBN 978-953-307-660-7

Hard cover, 254 pages

Publisher InTech

Published online 10, October, 2011

Published in print edition October, 2011

Currently, aortic stenosis (AS) is the most prevalent valvular disease in developed countries. Pathological and molecular mechanisms of AS have been investigated in many aspects. And new therapeutic devices such as transcatheter aortic valve implantation have been developed as a less invasive treatment for high-risk patients. Due to advanced prevalent age of AS, further discovery and technology are required to treat elderly patients for longer life expectancy. This book is an effort to present an up-to-date account of existing knowledge, involving recent development in this field. Various opinion leaders described details of established knowledge or newly recognized advances associated with diagnosis, treatment and mechanism. Thus, this book will enable close intercommunication to another field and collaboration technology for new devices. We hope that it will be an important source, not only for clinicians, but also for general practitioners, contributing to development of better therapeutic adjuncts in the future.

How to reference

In order to correctly reference this scholarly work, feel free to copy and paste the following:

J. Ker and WFP Van Heerden (2011). Cellular and Neuronal Aspects in Aortic Stenosis, Aortic Stenosis - Etiology, Pathophysiology and Treatment, Dr. Masanori Hirota (Ed.), ISBN: 978-953-307-660-7, InTech, Available from: <http://www.intechopen.com/books/aortic-stenosis-etiology-pathophysiology-and-treatment/cellular-and-neuronal-aspects-in-aortic-stenosis>

INTECH
open science | open minds

InTech Europe

University Campus STeP Ri
Slavka Krautzeka 83/A
51000 Rijeka, Croatia
Phone: +385 (51) 770 447
Fax: +385 (51) 686 166
www.intechopen.com

InTech China

Unit 405, Office Block, Hotel Equatorial Shanghai
No.65, Yan An Road (West), Shanghai, 200040, China
中国上海市延安西路65号上海国际贵都大饭店办公楼405单元
Phone: +86-21-62489820
Fax: +86-21-62489821

© 2011 The Author(s). Licensee IntechOpen. This is an open access article distributed under the terms of the [Creative Commons Attribution 3.0 License](https://creativecommons.org/licenses/by/3.0/), which permits unrestricted use, distribution, and reproduction in any medium, provided the original work is properly cited.

IntechOpen

IntechOpen