

We are IntechOpen, the world's leading publisher of Open Access books Built by scientists, for scientists

6,900

Open access books available

185,000

International authors and editors

200M

Downloads

Our authors are among the

154

Countries delivered to

TOP 1%

most cited scientists

12.2%

Contributors from top 500 universities



WEB OF SCIENCE™

Selection of our books indexed in the Book Citation Index
in Web of Science™ Core Collection (BKCI)

Interested in publishing with us?
Contact book.department@intechopen.com

Numbers displayed above are based on latest data collected.
For more information visit www.intechopen.com



Stress Testing in Patients with Asymptomatic Severe Aortic Stenosis

Asim M. Rafique, Kirsten Tolstrup and Robert J. Siegel
*Cedars-Sinai Heart Institute,
 University of California
 United States of America*

1. Introduction

The natural history of valvular aortic stenosis (AS) is characterized by a protracted symptom free period during which morbidity and mortality are very low. During this period the average decrease in the aortic valve area is about 0.1 cm² per year (1-4), although it is impossible to predict the rate of progression in an individual patient. For this reason, regular clinical follow-up is standard of care in all patients with asymptomatic mild to moderate AS (1). The onset of symptoms such as: angina, syncope, or heart failure significantly changes prognosis, with an average survival of 60% at 1 year and has increased risk of sudden cardiac death (5-7).

2. Identifying high risk asymptomatic patients with severe AS

Aortic valve replacement (AVR) is the current standard treatment for patients with severe AS who have symptoms or left ventricular (LV) systolic dysfunction (1, 2). However, the best treatment strategy in asymptomatic patients with severe AS and preserved LV systolic function is debated (8). Conservative approach with a watchful waiting is generally favored although the utility of early elective AVR has been debated in subset of high risk patients. Several predictors have been proposed which predict poor outcomes in patients with asymptomatic severe AS. These include stress testing, severity of AS, rapid hemodynamic progression of AS, elevated left atrial pressure as assessed by E/E' using tissue Doppler imaging or atrial natriuretic peptide (NPA). Of these stress testing is the most validated way of identifying asymptomatic patients who may benefit from AVR (9-10).

3. Importance of stress testing

Improved life expectancy has resulted in there being more elderly patients with AS, in whom the true symptoms may be underestimated (11). Given the slow progression of disease, patients may reduce their level of physical activity to avoid or minimize symptoms and be unaware of subtle changes in effort tolerance or attribute it to deconditioning or a physical impact due to aging. The accurate determination of symptoms is crucial; as symptoms increase the risk of sudden death worsens as well as pretend an overall worst prognosis (12-13).

Valvular heart disease has a varying dynamic components which depend on loading conditions, ventricular contractility, ventricular contractile reserve, volume-dependent compliance of heart chambers, and ventricular arterial coupling. The current primary role of stress testing in asymptomatic severe aortic stenosis is to provide an objective assessment of functional capacity which is of the utmost importance in patients who often adapt and reduce their physical activity, thus masking the symptoms. In addition, exercise testing can identify changes in valvular as well as ventricular function and the changes in the valve gradient with the changes in forward flow and to differentiate true vs. pseudo aortic stenosis in the setting of low cardiac output.

4. Indications of stress testing

Valve replacement is indicated in the presence of symptoms and severe aortic stenosis. In such patients, stress testing is contraindicated. In contrast, exercise testing is recommended in asymptomatic patients with severe aortic stenosis. Exercise testing is strongly advocated in the European guidelines and is a grade IIb recommendation in the American College of Cardiology/American Heart Association (ACC/AHA) 2006 guidelines (1, 2). There is no prospective clinical trial on the use of stress testing in asymptomatic patients with severe AS as an indicator for aortic valve replacement. However, several retrospective small clinical studies have evaluated the predictive value of stress testing in asymptomatic severe AS (14-26), as shown in figure 1 which has been adapted from the American Journal of Cardiology (9). In this meta-analysis there were no sudden deaths in the patients with normal stress test results after 1 year of follow-up, while 5% with abnormal stress test results had sudden cardiac death. Overall, 52 of 253 patients (21%) with normal stress test results had adverse cardiac events, compared with 156 of 238 (66%) with abnormal stress test results. Stress testing can be used for risk stratification and for deciding on the timing of AVR in asymptomatic patients with severe AS.

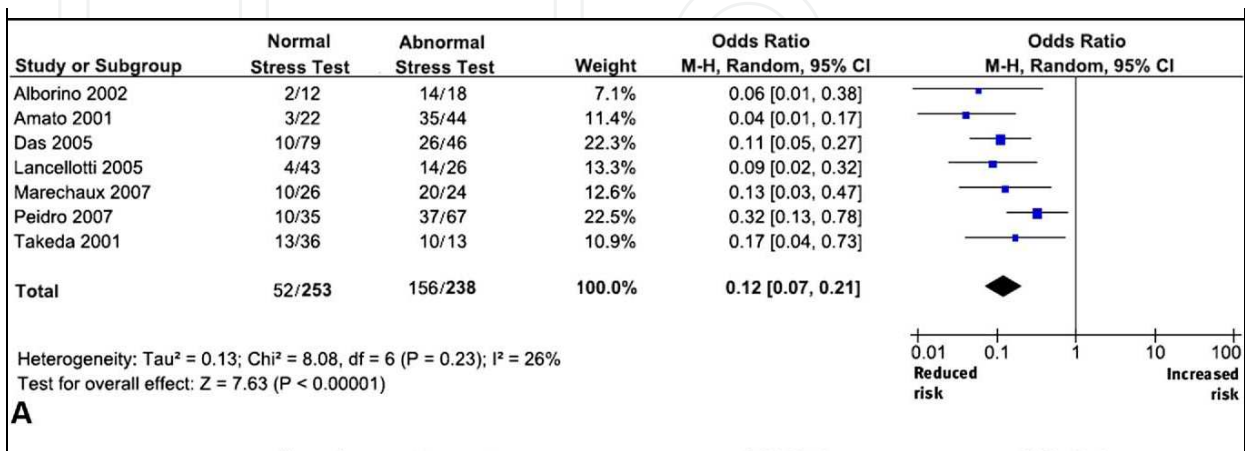


Fig. 1. Utility of stress testing in predicting cardiac events in patients with Severe AS

5. Prevalence of stress testing

The results of the Euro Heart Survey on Valvular Heart Disease revealed that stress testing is underused in Europe. Only about 5.7% of asymptomatic patients with severe AS undergo exercise testing (27). The reason for the low usage of stress testing include: concern about safety, lack of awareness of its utility and lack of randomized, prospective trials. Stress testing is considered low risk when performed in asymptomatic patients under medically supervised conditions (9).

6. Types of stress test

A symptom-limited exercise test is more physiologic than a dobutamine test and may be performed safely. Treadmill or upright bicycle ergometry are the most frequent tests and the choice is based on individual experience or equipment available in a given laboratory. Symptom-limited graded bicycle exercise in a semi-supine position may be preferable since it allows continuous two dimensional and Doppler echocardiographic examinations. Dobutamine stress echocardiography may be used to assess aortic valve compliance by plotting effective orifice area against flow at each stage of the dobutamine test. However, in asymptomatic patients with severe aortic stenosis it is less likely to be helpful in identifying patients with occult symptoms. In asymptomatic patients with severe AS exercise testing should be repeated every 6 months for severe aortic stenosis and every year for moderate aortic stenosis (14). Testing should be performed in laboratory equipped with a resuscitation cart in the presence of a physician so that potential complications can be treated effectively.

7. Parameters to be evaluated on stress testing

Total exercise time, maximum workload, peak heart rate and blood pressure and the reason for stopping the test are recorded. The criteria of an abnormal exercise test provided in the European recommendations are listed in table 1. It is essential to record the development of symptoms carefully, such as objective dyspnea, angina, dizziness or near-syncope. When Doppler echocardiography is obtained during exercise, aortic velocity-time integral can be regularly recorded from the same window to assess changes in mean pressure gradient.

The assessment of exercise capacity often identifies symptoms that patient has not reported and has important prognostic significance as outlined in multiple clinical studies but simple stress testing fails to identify patients at higher risk for rapid disease progression (9). A representative example of ST changes during stress testing in a patient with AS is shown in figure 2.

8. Pathophysiology during exercise

Multiple studies have shown that the LV response to exercise is abnormal in apparently asymptomatic AS (24-29). Patients with apparently asymptomatic AS with symptoms detected during exercise testing have lower peak myocardial oxygen consumption and lower peak stroke index than those patients who remained asymptomatic (24). Studies have shown that normal increases in stroke volume on exercise in patients with mild and

Symptoms during exercise: dyspnea, angina, syncope or near syncope
Fall in blood pressure or <20 mm Hg rise in systolic blood pressure during exercise
<80% of normal level of exercise tolerance
>2 mm ST segment depression during exercise (horizontal or down sloping, in comparison to baseline, not attributable to other causes)
Ventricular arrhythmias

Table 1. Criteria of an abnormal exercise test in patients with asymptomatic aortic stenosis

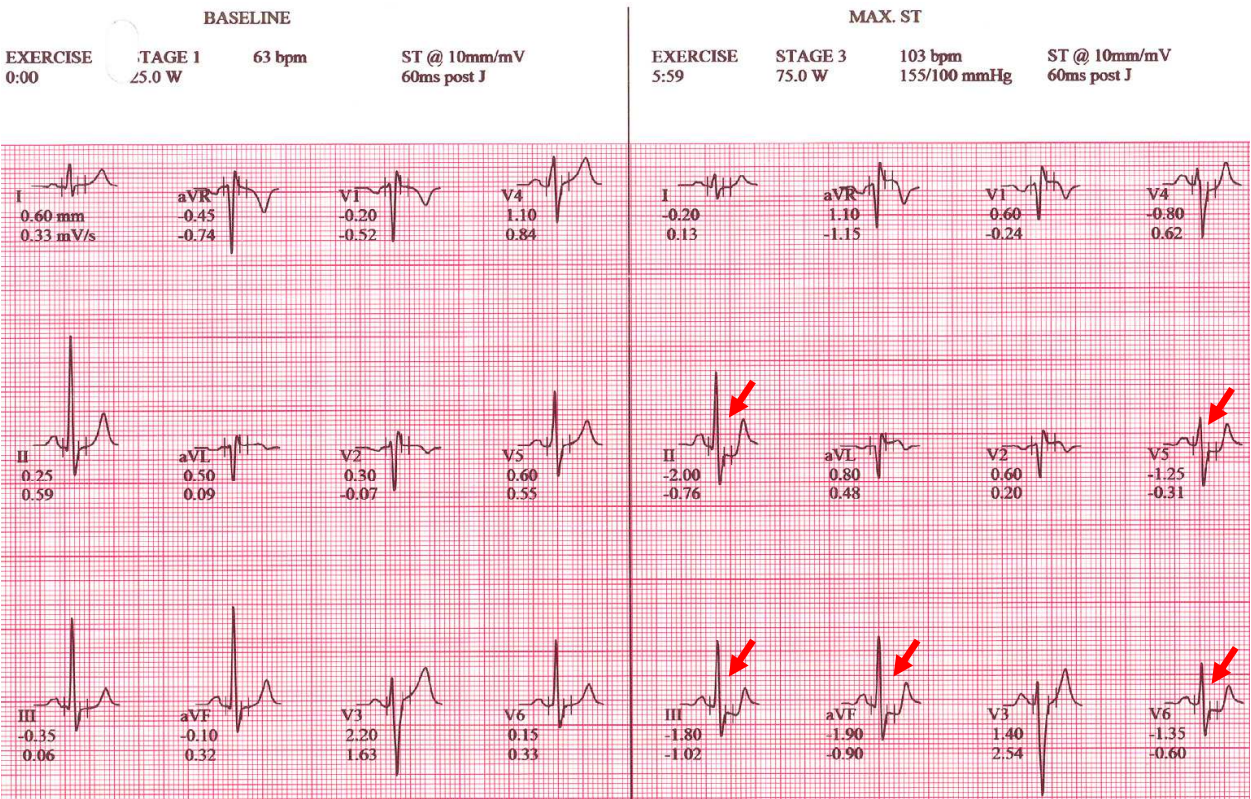


Fig. 2. A representative example of ST changes in infero-lateral leads during stress testing in a patient with AS

moderate AS but stroke volume was significantly decreased in symptomatic patients with severe AS both at rest and on exercise. Otto et al observed a decrease in stroke volume on exercise in asymptomatic patients with AS using Doppler echocardiography (15). Severe calcification has been reported to sometimes represent or be associated with a faster progression of the AS and a higher risk for the rapid progression to symptoms and events (8). Lancellotti et al demonstrated that an abnormal exercise response in patients with asymptomatic AS was mediated by impaired contractile reserve and a relatively large increase in gradient (21). Marechaux et al. showed the utility of risk stratification based on

the increase in the mean pressure gradient of $>18\text{mmHg}$ as the most predictive of outcomes (24). Peak exercise LV ejection fraction is another parameter for risk stratification in patients with asymptomatic AS, if LVEF does not increase by $\geq 5\%$ it indicates impaired contractile reserve, and it is suggestive of limited LV functional reserve (23). Aortic physiology due to altered compliance may play a role in the pathophysiology and progression of the disease, and this may become evident on stress testing. Some authors have noted a blunted fall in systemic vascular resistance associated with exercise induced symptoms (24-26). In short, AS, coronary disease and reduced aortic compliance exist as a continuum, and stress testing can play the critical role of revealing symptoms and subsequent referral for intervention.

9. Clinical utility of stress testing

The current ESC guidelines recommend AVR in patients who develop cardiac symptoms (class I) or who develop asymptomatic hypotension (class IIa) or asymptomatic ventricular arrhythmias (class IIb) during the exercise test (2). In contrast, the ACC/AHA guidelines recommend AVR if symptoms or hypotension appear during the exercise test (class IIb) (1). The divergent recommendations can be explained by the lack of definitive evidence from prospective clinical trials and subsequent different interpretation by the two groups. While, exercise stress testing is recommended in the management of asymptomatic patients with severe AS, exercise stress echocardiography is not routinely recommended in the current guidelines.

No randomized trial has been conducted in patients with asymptomatic severe aortic stenosis (30). The risk of sudden death is low and is usually considered to be lower than the risk of operation. However, the mortality is rather high early after the onset of symptoms or if the patient is on a surgical waiting list. In some patients, symptoms are not identified, especially in elderly subjects who are rather inactive (31). On the other hand, dyspnea and chest pain may be non-specific. Exercise testing can identify a limited exercise capacity and unmask symptoms in about one-third of the apparently asymptomatic patients (32-33). The development of symptoms during exercise seems to be more predictive than the other criteria, but this needs to be confirmed. A significant increase in mean transaortic pressure gradient predicts a higher risk of cardiac events and has been shown to provide incremental prognostic information over clinical, resting Doppler echocardiographic and exercise testing (21,24). Further studies using novel echocardiographic techniques may provide additional understanding of the hemodynamics in patients with severe asymptomatic AS and refine the utility of stress testing in risk stratification of AS patients for AVR either surgical or by newer percutaneous techniques (34).

In summary, stress testing appears to be of value in unmasking the symptoms in otherwise asymptomatic patients who may have denial or who unconsciously limit their activity secondarily to progressive AS. In addition, in elderly patients, symptoms may not be identified because of inactivity, thus in these groups of asymptomatic patients stress testing readily provides an objective assessment of functional status.

10. References

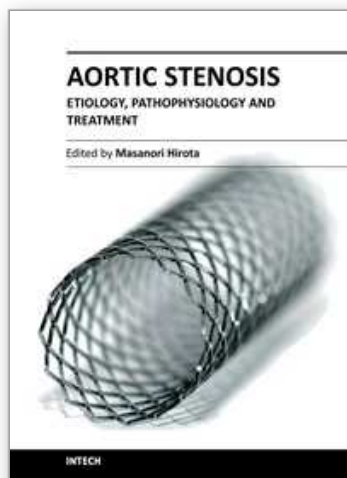
- [1] American College of Cardiology/American Heart Association Task Force on Practice Guidelines; Society of Cardiovascular Anesthesiologists; Society for Cardiovascular Angiography and Interventions; Society of Thoracic Surgeons, Bonow RO,

- Carabello BA, Kanu C, de Leon AC Jr, Faxon DP, Freed MD, Gaasch WH, Lytle BW, Nishimura RA, O’Gara PT, O’Rourke RA, Otto CM, Shah PM, Shanewise JS, Smith SC Jr, Jacobs AK, Adams CD, Anderson JL, Antman EM, Faxon DP, Fuster V, Halperin JL, Hiratzka LF, Hunt SA, Lytle BW, Nishimura R, Page RL, Riegel B. ACC/AHA 2006 guidelines for the management of patients with valvular heart disease: a report of the American College of Cardiology/American Heart Association Task Force on Practice Guidelines. *Circulation* 2006;114:e84–e231.
- [2] Vahanian A, Baumgartner H, Bax J, Butchart E, Dion R, Filippatos G, Flachskampf F, Hall R, Iung B, Kasprzak J, Nataf P, Tornos P, Torracca L, Wenink A, Priori SG, Blanc JJ, Budaj A, Camm J, Dean V, Deckers J, Dickstein K, Lekakis J, McGregor K, Metra M, Morais J, Osterspey A, Tamargo J, Zamorano JL, Zamorano JL, Angelini A, Antunes M, Fernandez MA, Gohlke-Baerwolf C, Habib G, McMurray J, Otto C, Pierard L, Pomar JL, Prendergast B, Rosenhek R, Uva MS, Tamargo J. Guidelines on the management of valvular heart disease: the Task Force on the Management of Valvular Heart Disease of the European Society of Cardiology. *Eur Heart J* 2007;28:230–268.
- [3] Otto CM, Pearlman AS, Gardner CL. Hemodynamic progression of aortic stenosis in adults assessed by Doppler echocardiography. *J Am Coll Cardiol* 1989;13:545–550.
- [4] Wagner S, Selzer A. Patterns of progression of aortic stenosis: a longitudinal hemodynamic study. *Circulation* 1982;65:709–712.
- [5] Ross J Jr., Braunwald E. Aortic stenosis. *Circulation* 1968;38:61–7.
- [6] Schwarz F, Baumann P, Manthey J, Hoffmann M, Schuler G, Mehmel HC, Schmitz W, Kübler W. The effect of aortic valve replacement on survival. *Circulation* 1982;66:1105–1110.
- [7] Iivanainen AM, Lindroos M, Tilvis R, Heikkilä J, Kupari M. Natural history of aortic valve stenosis of varying severity in the elderly. *Am J Cardiol* 1996;78:97–101.
- [8] Zamorano JL, Gonçalves A. Exercise echocardiography in aortic stenosis: one more piece in the puzzle. *Eur Heart J*. 2010 Jun;31(11):1295–7.
- [9] Rafique AM, Biner S, Ray I, Forrester JS, Tolstrup K, Siegel RJ. Meta-analysis of prognostic value of stress testing in patients with asymptomatic severe aortic stenosis. *Am J Cardiol* 2009;104:972–977.
- [10] Biner S, Rafique AM, Goykhman P, Morrissey RP, Naghi J, Siegel RJ. Prognostic value of E/E' ratio in patients with unoperated severe aortic stenosis. *JACC Cardiovasc Imaging*. 2010 Sep;3(9):899–907. PubMed PMID: 20846623.
- [11] Nkomo VT, Gardin JM, Skelton TN, Gottdiener JS, Scott CG, Enriquez-Sarano M. Burden of valvular heart diseases: a population-based study. *Lancet* 2006;368: 1005–1011.
- [12] Bouma BJ, van Den Brink RB, van Der Meulen JH, Verheul HA, Cheriex EC, Hamer HP, Dekker E, Lie KI, Tijssen JG. To operate or not on elderly patients with aortic stenosis: the decision and its consequences. *Heart* 1999;82:143–148.
- [13] Bach DS, Siao D, Girard SE, Duvernoy C, McCallister BD Jr, Gualano SK. Evaluation of patients with severe symptomatic aortic stenosis who do not undergo aortic valve replacement: the potential role of subjectively overestimated operative risk. *Circ Cardiovasc Qual Outcomes*. 2009;2(6):533–539.
- [14] Chambers J, Das P. Treadmill exercise in apparently asymptomatic aortic stenosis. *Heart*. 2001 Oct;86(4):361–2.

- [15] Otto CM, Burwash IG, Legget ME, Munt BI, Fujioka M, Healy NL, Kraft CD, Miyake-Hull CY, Schwaegler RG. Prospective study of asymptomatic valvular aortic stenosis. Clinical, echocardiographic, and exercise predictors of outcome. *Circulation*. 1997 May 6;95(9):2262-70.
- [16] Das P, Rimington H, Chambers J. Exercise testing to stratify risk in aortic stenosis. *Eur Heart J* 2005;26:1309-1313.
- [17] Alborino D, Hoffmann JL, Fournet PC, Bloch A. Value of exercise testing to evaluate the indication for surgery in asymptomatic patients with valvular aortic stenosis. *J Heart Valve Dis* 2002;11:204-209.
- [18] Amato MC, Moffa PJ, Werner KE, Ramires JA. Treatment decision in asymptomatic aortic valve stenosis: role of exercise testing. *Heart* 2001;86:381-386.
- [19] Atwood JE, Kawanishi S, Myers J, Froelicher VF. Exercise testing in patients with aortic stenosis. *Chest* 1988;93:1083-1087.
- [20] Takeda S, Rimington H, Chambers J. Prediction of symptom-onset in aortic stenosis: a comparison of pressure drop/flow slope and haemodynamic measures at rest. *Int J Cardiol* 2001;81:131-137.
- [21] Lancellotti P, Lebois F, Simon M, Tombeux C, Chauvel C, Pierard LA. Prognostic importance of quantitative exercise Doppler echocardiography in asymptomatic valvular aortic stenosis. *Circulation* 2005;112:1377-1382.
- [22] Peidro R, Brion G, Angelino A. Exercise testing in asymptomatic aortic stenosis. *Cardiology* 2007;108:258-264.
- [23] Marechaux S, Ennezat PV, LeJemtel TH, Polge AS, de Groote P, Asseman P, Nevière R, Le Tourneau T, Deklunder G. Left ventricular response to exercise in aortic stenosis: an exercise echocardiographic study. *Echocardiography* 2007;24:955-959.
- [24] Maréchaux S, Hachicha Z, Bellouin A, Dumesnil JG, Meimoun P, Pasquet A, Bergeron S, Arsenault M, Le Tourneau T, Ennezat PV, Pibarot P. Usefulness of exercise-stress echocardiography for risk stratification of true asymptomatic patients with aortic valve stenosis. *Eur Heart J*. 2010 Jun;31(11):1390-7.
- [25] Weisenberg D, Shapira Y, Vaturi M, Monakier D, Iakobishvili Z, Battler A, Sagie A. Does exercise echocardiography have an added value over exercise testing alone in asymptomatic patients with severe aortic stenosis? *J Heart Valve Dis*. 2008 Jul;17(4):376-80.
- [26] Kusljagic Z, Barakovic F, Dilic M, Dizdarevic-Hudic L, Smajic E, Caluk J, Avdic S, Mulic S, Isabegovic M, Avdagic M, Kovacevic-Divkovic K, Bijedic A. The role of exercise test in stratifying the risk of asymptomatic patients with moderate/severe aortic stenosis. *Med Arh*. 2010;64(5):269-273.
- [27] Iung B, Baron G, Butchart EG, Delahaye F, Gohlke-Bärwolf C, Levang OW, Tornos P, Vanoverschelde JL, Vermeer F, Boersma E, Ravaud P, Vahanian A. A prospective survey of patients with valvular heart disease in Europe: The Euro Heart Survey on Valvular Heart Disease. *Eur Heart J* 2003;24:1231-1243.
- [24] Rajani R, Rimington H, Chambers JB. Treadmill exercise in apparently asymptomatic patients with moderate or severe aortic stenosis: relationship between cardiac index and revealed symptoms. *Heart*. 2010 May;96(9):689-95.
- [25] Laskey WK, Kussmaul WG 3rd, Noordergraaf A. Systemic arterial response to exercise in patients with aortic valve stenosis. *Circulation* 2009;119: 996e1004.

- [26] Vekshtein VI, Alexander RW, Yeung AC, et al. Coronary atherosclerosis is associated with left ventricular dysfunction and dilatation in aortic stenosis. *Circulation* 1990;82:2068e74.
- [27] Lancellotti P, Donal E, Magne J, Moonen M, O'Connor K, Daubert JC, Pierard LA. Risk stratification in asymptomatic moderate to severe aortic stenosis: the importance of the valvular, arterial and ventricular interplay. *Heart*. 2010Sep;96(17):1364-71.
- [28] Dalsgaard M, Kjaergaard J, Pecini R, Iversen KK, Kober L, Moller JE, Grande P, Clemmensen P, Hassager C. Predictors of exercise capacity and symptoms in severe aortic stenosis. *Eur J Echocardiogr*. 2010 Jul;11(6):482-7.
- [29] Leurent G, Donal E, de Place C, Chabanne C, Gervais R, Fougerou C, le Helloco A, Daubert JC, Mabo P, Laurent M. Argument for a Doppler echocardiography during exercise in assessing asymptomatic patients with severe aortic stenosis. *Eur J Echocardiogr*. 2009 Jan;10(1):69-73.
- [30] McCann GP, Steadman CD, Ray SG, Newby DE; on behalf of the British Heart Valve Society. Managing the asymptomatic patient with severe aortic stenosis: randomised controlled trials of early surgery are overdue. *Heart*. 2011 Mar 12.
- [31] Shah RV, Desai NR, O'Gara PT. Asymptomatic severe aortic stenosis: silence of the lambs? *Circulation*. 2010 Oct 26;122(17):1734-9.
- [32] Picano E, Pibarot P, Lancellotti P, Monin JL, Bonow RO. The emerging role of exercise testing and stress echocardiography in valvular heart disease. *J Am Coll Cardiol*. 2009 Dec 8;54(24):2251-60.
- [33] Rosenhek R, Zilberszac R, Schemper M, Czerny M, Mundigler G, Graf S, Bergler-Klein J, Grimm M, Gabriel H, Maurer G. Natural history of very severe aortic stenosis. *Circulation*. 2010 Jan 5;121(1):151-6.
- [34] Lancellotti P, Donal E, Magne J, O'Connor K, Moonen ML, Cosyns B, Pierard LA. Impact of global left ventricular afterload on left ventricular function in asymptomatic severe aortic stenosis: a two-dimensional speckle-tracking study. *Eur J Echocardiogr*. 2010 Jul; 11(6):537-43.

IntechOpen



Aortic Stenosis - Etiology, Pathophysiology and Treatment

Edited by Dr. Masanori Hirota

ISBN 978-953-307-660-7

Hard cover, 254 pages

Publisher InTech

Published online 10, October, 2011

Published in print edition October, 2011

Currently, aortic stenosis (AS) is the most prevalent valvular disease in developed countries. Pathological and molecular mechanisms of AS have been investigated in many aspects. And new therapeutic devices such as transcatheter aortic valve implantation have been developed as a less invasive treatment for high-risk patients. Due to advanced prevalent age of AS, further discovery and technology are required to treat elderly patients for longer life expectancy. This book is an effort to present an up-to-date account of existing knowledge, involving recent development in this field. Various opinion leaders described details of established knowledge or newly recognized advances associated with diagnosis, treatment and mechanism. Thus, this book will enable close intercommunication to another field and collaboration technology for new devices. We hope that it will be an important source, not only for clinicians, but also for general practitioners, contributing to development of better therapeutic adjuncts in the future.

How to reference

In order to correctly reference this scholarly work, feel free to copy and paste the following:

Asim M. Rafique, Kirsten Tolstrup and Robert J. Siegel (2011). Stress Testing in Patients with Asymptomatic Severe Aortic Stenosis, *Aortic Stenosis - Etiology, Pathophysiology and Treatment*, Dr. Masanori Hirota (Ed.), ISBN: 978-953-307-660-7, InTech, Available from: <http://www.intechopen.com/books/aortic-stenosis-etiology-pathophysiology-and-treatment/stress-testing-in-patients-with-asymptomatic-severe-aortic-stenosis>

INTECH
open science | open minds

InTech Europe

University Campus STeP Ri
Slavka Krautzeka 83/A
51000 Rijeka, Croatia
Phone: +385 (51) 770 447
Fax: +385 (51) 686 166
www.intechopen.com

InTech China

Unit 405, Office Block, Hotel Equatorial Shanghai
No.65, Yan An Road (West), Shanghai, 200040, China
中国上海市延安西路65号上海国际贵都大饭店办公楼405单元
Phone: +86-21-62489820
Fax: +86-21-62489821

© 2011 The Author(s). Licensee IntechOpen. This is an open access article distributed under the terms of the [Creative Commons Attribution 3.0 License](https://creativecommons.org/licenses/by/3.0/), which permits unrestricted use, distribution, and reproduction in any medium, provided the original work is properly cited.

IntechOpen

IntechOpen