

We are IntechOpen, the world's leading publisher of Open Access books Built by scientists, for scientists

6,900

Open access books available

186,000

International authors and editors

200M

Downloads

Our authors are among the

154

Countries delivered to

TOP 1%

most cited scientists

12.2%

Contributors from top 500 universities



WEB OF SCIENCE™

Selection of our books indexed in the Book Citation Index
in Web of Science™ Core Collection (BKCI)

Interested in publishing with us?
Contact book.department@intechopen.com

Numbers displayed above are based on latest data collected.
For more information visit www.intechopen.com



Prediction of Transcriptional Regulatory Networks for Retinal Development

Ying Li¹, Haiyan Huang² and Li Cai¹

¹Department of Biomedical Engineering, Rutgers University, NJ

²Department of Statistics, University of California, Berkeley, CA
USA

1. Introduction

The formation of the neatly layered retina during embryonic development is dictated by a series of complicated transcription factor interactions. Retina-specific expression of these transcription factors is an essential step in establishing retinal progenitor cells (RPCs) from embryonic stem cells. The transcriptional control of gene expression is largely mediated by the combinatorial interactions between *cis*-regulatory DNA elements and *trans*-acting transcription factors, which cooperate/interact with each other to form a transcription regulatory network during this developmental process. Such regulatory networks are essential in regulating tissue/cell-specific gene expression, e.g., in cell fate determination and differentiation during embryonic retinal development (Hu et al., 2010; Kumar, 2009; Swaroop et al., 2010). Many genes, which involved in transcriptional networks for the specification of a certain retinal cell lineage, have already been identified and characterized (Corbo et al., 2010; Kim et al., 2008b; Tang et al., 2010). The transcriptional regulatory networks for specific retinal cell lineages, e.g., the photoreceptors (Corbo et al., 2010; Hsiao et al., 2007) and bipolar neurons (Kim et al., 2008b), were established in recent years. However, the transcriptional regulatory network that governs the entire neural retinal development is still elusive.

Identifying tissue/cell-specific *cis*-regulatory elements, *trans*-acting factor binding sites (TFBSs), and their binding transcription factors (TFs) represent key steps towards understanding tissue/cell-specific gene expression and further successful reconstruction of transcriptional regulatory networks. These steps also present major challenges in both fields of experimental biology and computational biology.

Currently, the prevailing method of studying TFBSs and transcriptional regulatory networks is to determine the function of tissue-specific *trans*-acting factors based on data from genome-wide gene expression profiling and chromatin immunoprecipitation (ChIP). ChIP is often used to investigate protein-DNA interactions in a cell. Coupled with massive parallel sequencing, ChIP-seq is capable of mapping the genome-wide protein-DNA interaction at a finer resolution (Valouev et al., 2008) to identify candidate enhancer sequences (Visel et al., 2009). Thus, a regulatory cascade can be recognized via consequential analysis of the factors involved.

Here, we present a new method for the computational analysis of TFBSs and transcriptional regulatory networks utilizing genome-wide sequencing, expression, and enhancer data. In

contrast to the traditional method, which mainly focuses on factor expression analysis, we emphasize the sequence elements with tissue-specific enhancer activity. Our hypothesis is that enhancers, non-coding sequences that direct gene expression in a cell-/tissue-specific manner, contain common TFBSs that allow the key protein factors (important for the development of that cell/tissue type) to bind. Experimentally verified tissue-specific enhancer elements selected from enhancer databases were carefully screened for common trans-acting factor binding sites to predict potential sequence-factor interacting networks. DNA-binding protein factors that associate with multiple enhancers can be analyzed using experimental methods.

As proof-of-principle, simple transcriptional regulatory networks of embryonic retinal development were assembled based on common/key factors and their interacting genes, as determined by literature search. These resulting networks provide a general view of embryonic retinal development and a new hypothesis for further experimentation.

2. Methods and results

In this study, we aimed to develop a method for the identification of regulatory networks for cell/tissue-specific gene expression. To test our hypothesis of the existence of common TFBSs on the enhancers of cell/tissue specific genes, we employ the mouse developing retina as a model system. Enhancers that direct retina-specific gene expression were selected and their sequences were thoroughly screened for common TFBSs and *trans*-acting factors (protein factors) using open-access software such as TESS, JASPA, MatInspector, and MEME, etc. For common TFBS selection, we developed a Matlab program. These common protein factors were further studied for their expression profiles. Thereafter, we were able to construct transcriptional regulatory networks based on the known function of the enhancer-binding *trans*-acting factors using a network construction tool, BioTapestry (Longabaugh et al., 2009).

2.1 Retina-specific enhancers

To determine the transcriptional regulatory networks that govern retinal development, we identified and selected enhancer elements that direct gene expression in the retina by searching the VISTA Enhancer Browser. The VISTA Enhancer Browser is a central resource for experimentally validated human and mouse non-coding DNA fragments with enhancer activity as assessed in transgenic mice. Most of these non-coding elements were selected for testing based on their extreme conservation in other vertebrates or epigenomic evidence (ChIP-Seq) of putative enhancer marks. The results of this *in vivo* enhancer screen are provided through this publicly available website (Frazer et al., 2004). Of the 1503 non-coding DNA elements from human and mouse genomes that were tested for their ability to direct gene expression on embryonic day 11.5 (E11.5) using a reporter assay in transgenic mouse, a total of 47 elements were shown to possess enhancer activity in the retina (as of February 10, 2011). Of the 47 elements, 25 show enhancer activities in both the retina and other tissues, e.g., heart, limb, brain and spinal cord, etc. These 25 elements were separated for further analysis as we focused on retina-specific sequence elements. In addition, among the 22 remaining elements, 17 elements were active enhancers in the retina in at least half of the tested transgenic embryos (Supporting data 1). To further increase the possibility of identifying the key enhancer elements that are critical for retinal development, we applied more stringent selection criteria based on the following two properties: 1) the reporter

expression is restricted in the retina and not in any other regions of the CNS; 2) there is expression of at least one of the flanking genes in the retina at E11.5 (or Theiler Stage 18-21). The second category was applied because a majority of known enhancers were found in the immediate up- or downstream region of their target genes, and thus the regulatory activities of enhancers were considered to be most likely associated with their flanking genes. Any enhancer elements that did not fit into at least one of the two categories was thus eliminated (details in Supporting data 5). Based on the above criteria, 8 enhancer elements were identified (Table 1).

Group	Enhancer ID	Length (bp)	Reporter expression pattern derived from enhancer activity	Annotation of reporter expression	Flanking genes of enhancers and their endogenous expression in mouse embryos	
					Upstream	Downstream
1	hs27	1113	eye(4/6), limb(4/6)	Retina + non-CNS	Irx5: E11-19 retina	Irx6: E11-19 retina
	hs258	1487	eye(3/5), limb,	Retina + non-CNS	Ccdc39: E14.5	Fxr1: E12-14, E19 retina
	hs546	1753	eye(7/7), limb, nose	Retina + non-CNS	Nr2f1: E11-19 in retina	Arrdc3: E14-19
	hs1170	1288	eye(8/8)	Retina	Nr2f1: E11-19 in retina	Arrdc3: E14-19
2	hs932	775	eye(6/9), limb, nose, branchial arch	Retina + non-CNS	AA408296: unknown	Irf6: not in retina
	mm165	926	eye(4/5), heart	Retina + non-CNS	Lao1: unknown	Slc2a1: not in retina
3	hs1122	1218	eye(6/7)	Retina+ Spinal cord	Ascl1: E11-19 in retina (MGI)	Pah: not in retina
	mm269	760	eye(5/5), heart, other	Retina+ Spinal cord	Zfand5 (intragenic): E11-13/E13-19 in retina	

Table 1. A list of eight retina-specific enhancers. The 8 retina-specific enhancers selected from the VISTA Enhancer Browser are listed above. They are grouped into 3 sub-groups according to the reporter expression in mouse embryos derived from these enhancers and the expression pattern of their flanking genes. The enhancer IDs, their expression pattern and the flanking gene names were retrieved directly from VISTA Enhancer Browser, with an expression pattern described as ‘tissue type (positive sample number/total sample number)’. Flanking genes with expression in the retina are shown in **bold**.

2.2 Trans-acting factor binding sites on retina-specific enhancers

The binding of trans-acting factors (e.g., transcription factors) to non-coding regulatory DNA (e.g., promoters, enhancers, etc.) is an essential process in the control of gene expression. This protein-DNA interaction helps recruit the DNA polymerase complex and co-activators to form the transcription machinery. The binding of these protein factors can also act as repressors to prevent transcription. Identification of a TFBS in the enhancer and promoter for a gene may indicate the possibility that the corresponding factors play a role in the regulation of that gene. Importantly, the ability of an enhancer to direct cell/tissue-specific gene expression is achieved via the binding of tissue-specific *trans*-acting protein

factors. To determine what protein factors regulate retina-specific gene expression, it is important to determine what TFBSs are located on the retina-specific enhancers. We thus searched DNA sequences of the 8 retina-specific enhancer elements for their known TFBSs using TESS (Schug, 2002), JASPA (Portales-Casamar et al., 2010; Sandelin et al., 2004) and MatInspector (Cartharius et al., 2005). For example, TESS (Transcription Element Search System - <http://www.cbil.upenn.edu/cgi-bin/tess>) is a web tool for predicting TFBSs in DNA sequences. It can identify TFBSs using site or consensus strings and positional weight matrices mainly from the TRANSFAC (Knuppel et al., 1994). TRANSFAC contains data on transcription factors, their experimentally-proven binding sites, and regulated genes. Its broad compilation of binding sites allows the derivation of positional weight matrices (Knuppel et al., 1994). The following search parameters were set when searching TESS: a minimum string length of 6, a maximum allowable string mismatch of 10%, a minimum log-likelihood ratio score of 12, and organism selection of *Mus musculus* (the house mouse). Our search results show that there are approximately 150 TFBSs for each of the 8 enhancer sequences (Supporting data 2). Similar results were reported by JASPA and MatInspector. The corresponding protein factors of these TFBSs were considered to be capable of binding with the 8 retina-specific enhancers, and thus they are important in activating/suppressing gene expression in the retina.

2.3 A motif containing Pou3f2 binding sites

Since all 8 enhancers possess the ability to direct retina-specific gene expression, there may be key TFBSs shared amongst these retina-specific sequence elements. To test this hypothesis, we sorted and screened the TFBSs of each of the 8 enhancers to identify common ones using a Matlab program that we developed for this study (Supporting data 6). This Matlab program for common TFBS selection was designed to compare the TFBSs on each of the retina-specific enhancer elements predicted by TESS. TFBSs for two or three different enhancers can be sequentially compared. A “model” character was used as the comparison category instead of the binding site name in both TESS and our Matlab program. As defined in TESS, a model is “the site string or weight matrix used to pick this site” (Schug, 2002), and thus describes the nature of a binding site. One factor may have multiple models, and one model may be shared by multiple factors. The model character is the only necessary parameter to characterize the transcription factors depending on their binding site property. With this sorting/searching program, we identified a TFBS for Pou3f2 (also known as Brn2) that was present in all 8 retina-specific enhancers (Fig. 1A). Previous studies have demonstrated that the Pou3f2 transcription factor plays an important role in the development of neural progenitor cells (Catena et al., 2004; Kim et al., 2008b; McEvilly et al., 2002; Sugitani et al., 2002). Furthermore, the literature reports that this motif was first discovered as a *cis*-element in the Chx10 enhancer, which can drive reporter expression in intermediate and late RPCs (Rowan and Cepko, 2005). In this study, Pou3f2 was also shown to affect bipolar interneuron fate determination through interactions with Chx10 and Nestin. We thus speculate that this Pou3f2 binding site may exist in regulatory sequences among genes important for the development of neural retinal progenitor cells (RPCs). Therefore, the *cis*-elements of Chx10, Cyclin D1, Pax6, Rax, and Six3 were examined because these genes are known for their role in regulating RPC development and retinal cell differentiation (Conte et al., 2010; Martinez-de Luna et al., 2010; Oliver et al., 1995; Rowan and Cepko, 2005; Sicinski et al., 1995). Confirming our prediction, Pou3f2 binding sites were also present in the *cis*-elements of Chx10, Cyclin D1, and Pax6 genes (sequences can be found

in Supporting data 4). Next, sequence alignment analysis was performed to identify a common motif for Pou3f2 binding sites using MEME (Multiple Em for Motif Elicitation, http://meme.sdsc.edu/meme4_4_0/cgi-bin/meme.cgi) (Bailey and Elkan, 1994). It is commonly believed that there are dependencies among different positions in a motif. MEME may ignore such kind of dependency. Sequence alignment reveals a 22 bp motif containing two Pou3f2 binding sites among all 8 enhancer elements (with a stringent E-value of 7.2e-20 and p-value < 3.02e-6) and also in the *cis*-elements of RPC-specific genes, e.g., Chx10, CyclinD1, and Pax6, from multiple vertebrate species (Fig. 1B). In addition, a line of evidence indicates that Pou3f2 binds to the Rax enhancer to regulate the expression of Rax in RPCs (Martinez-de Luna et al., 2010). Such prevalent existence of repeated Pou3f2 binding sites among retina-specific enhancer elements and *cis*-elements of RPC-specific genes suggests that Pou3f2 is a key regulatory factor in the embryonic retinal development.

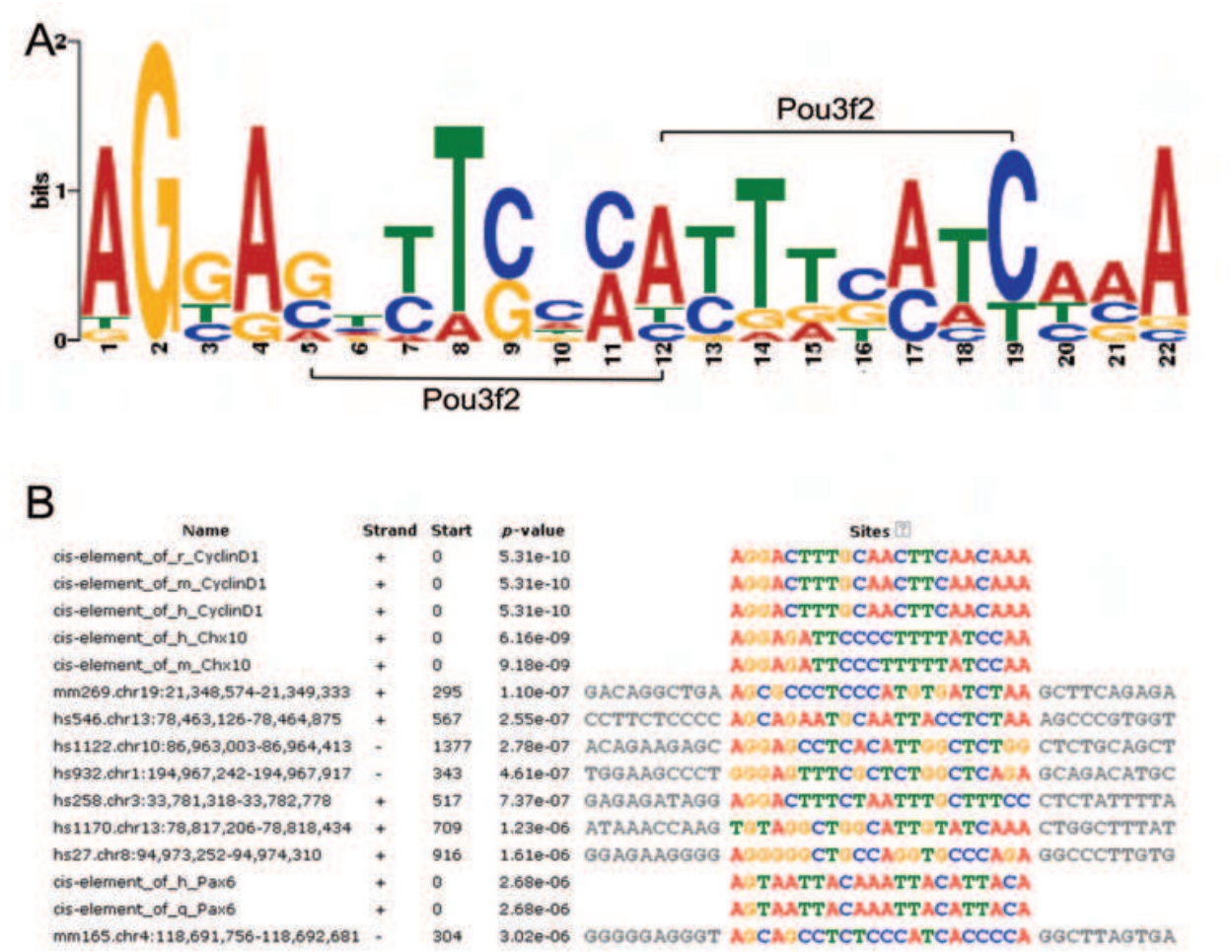


Fig. 1. A 22 bp motif is present in all 8 retina-specific enhancers and *cis*-elements of retinal progenitor gene Chx10, CyclinD1 and Pax6. Sequence alignment was performed using MEME and the output shows a motif exists among all above 15 sequences (p-value < 3e-6). A. a SeqLog presentation of the 22bp motif. Dual binding sites of Pou3f2 were located next to each other forms Pou3f2 binding site repeats. B. sequence alignment reveals the 22bp motif among the 8 enhancers and *cis*-elements of RPC-specific genes (e.g., Chx10, CyclinD1 and Pax6) (Rowan and Cepko, 2005). Abbreviation: r, rat; m, mouse; h, human; q, quail. RPC, retinal progenitor cell.

2.4 Key *trans*-acting factors involved in transcriptional regulatory networks of retinal development

It is unlikely that only one factor (i.e., Pou3f2) is involved in regulating retina-specific gene expression. *Trans*-acting factors often do not function alone but rather in a cooperative manner. To identify other key protein factors for retina-specific gene expression, we applied the following assumptions to the enhancer elements and their binding *trans*-acting factors:

- 1. Key TFBSs should be common to all or a subset of retina-specific enhancer elements;
- 2. The flanking genes of these enhancer elements should be expressed in the retina during early retinal development, because an enhancer often regulates the expression of its flanking gene(s);
- 3. The binding factors should have a known function in retinal development, or
- 4. If the binding factors have an unknown function in retinal development, they should be at least expressed in the retina during retinal development. In this case, the expression of the factor provides novel hypothesis for their function in retinal development, which needs to be tested by functional studies.

Based on the above assumptions, the information on the expression of the flanking genes of enhancer elements in the developing retina is necessary for the TFBS analysis. Five databases of gene expression (see Table 2) were searched. The information on the expression of these flanking genes were retrieved from these databases (Tables 1, 4 and supporting data 3). The factors that do not express in the retina during embryonic retinal development, e.g., around E11.5 (when enhancer elements were active), were set aside for further analysis of retinal transcriptional regulatory networks. We then searched common TFBSs among subsets of the 8 retina-specific enhancers. The TFBSs common to individual different subgroups were combined. In addition to Pou3f2, five other factors (i.e., Crx, Hes1, Meis1, Pbx2, and Tcf3) were identified (Table 3). Four of the 6 factors have known functions in retinal development, which is consistent with our hypothesis. The last two factors do not have known functions in the retina. However, the prediction of their binding with groups of enhancers suggests they play a role during retinogenesis. As the binding sites of these 6 factors were shared among a subset of retina-specific enhancer elements, these 6 binding *trans*-acting factors were predicted as the key factors that participate in regulating retina-specific gene expression during embryonic development.

Database	Source	Reference
Gene expression database (emage) of Edinburg Mouse Atlas Project (EMAP, v5.0_3.3)	http://www.emouseatlas.org/emage/	(Richardson et al., 2010)
Gene Expression Database in Mouse Genome Informatics (MGI, version 4.4)	http://www.informatics.jax.org	(Finger et al., 2011)
Eurexpress	http://www.eurexpress.org	(Diez-Roux et al., 2011)
VisiGene Image Browser	http://genome.ucsc.edu/cgi-bin/hgVisiGene	(Kent et al., 2002)
Genome-scale mouse brain transcription factor expression analysis	Supplementary data S4 and S6	(Gray et al., 2004)

Table 2. A list of gene expression databases used in this study.

Factor	Binding site	Known function	Expression pattern	Presence in enhancer element
Pou3f2	ATTTGCAT	Induce Bipolar cells	E10.5-14.5 in retina; diencephalon, future midbrain, future SC, rhombencephalon	All 8 elements
Crx	tgaggGGATCA Acagact	Induce Photoreceptors	E11-adult in retina	hs27, hs258, hs546, hs1170
Hes1	CTTG TG	Repress Amacrine, Horizontal, and Ganglion cells; Induce Photoreceptors	E11-13 in retina, thalamus, hypothalamus, striatum, olfactory epithelial	hs27, hs258, hs1170
Meis1	CTGTCActaaga tgaca	retinal cell fate determination	E10.5-14.5 in retina, lens vesicle, diencephalon, future sc, hindbrain	hs27, hs258, hs546, hs1170, hs932, mm165
Pbx-2	cacctgagagTGA CAGaaggaaggc agggag	No function known in retina	E10.5-14.5 in retina, thalamus, midbrain, hindbrain, sc, ear	hs27, hs258, hs546, hs1170, hs932, mm165
Tcf3	ccaccagCACCT Gtc	No function known in retina	E13.5 in retina (MGI)	hs27, hs258, hs546, hs1170

Table 3. A list of binding factors that show their temporal and spatial co-localization of expression with each group of enhancers. For each factor, elements shown in the last column indicate the enhancer elements which share a potential common binding with it. The ‘Expression pattern’ column shows available evidence of the co-localization with enhancers. Corresponding databases are noted because different databases recorded different expression pattern for the corresponding factor. The general function of each factor is also included for future reference. Abbreviation: RPC, retinal progenitor cell; B, bipolar cell; A, amacrine cell; H, horizontal cell; G, ganglion cell; PR, photoreceptor cell; sc, spinal cord.

Gene	Function (related to retina development) and reference
Ascl1	With Mash3, regulate the neuron/ glia fate determination (Hatakeyama et al., 2001); with Mahs3 and Chx10, specify Biopolar cell identity (Satow et al., 2001).
Irx5	Off circuit subsets of bipolar interneuron (Cheng et al., 2005; Cohen et al., 2000; Kerschensteiner et al., 2008).
Irx6	No known clear function in retina. But It expresses in the in the area lining the lumen of the otic vesicle including the region giving rise to ganglion complex of CN VII/VIII at E11.5 through E16.5 and overlaps with Mash1 (Cohen et al., 2000; Mummenhoff et al., 2001)
Fxr1	Retina pigmentation(de Diego Otero et al., 2000); other function not known.
Nr2f1	Amacrine development, may involve in cone differentiation; express in a unique gradient in retina along D/ V axis (Inoue et al., 2010).
Zfand5	No known function in retina.

Table 4. A list of flanking genes with their function and references

Interestingly, three common TFBSs (i.e., Pou3f2, Crx, and Meis1) were present among enhancer elements hs27, hs258, and hs1170 (see Tables 1, 3). Sequence alignment of the three enhancer elements and *cis*-elements of RPC-specific genes (e.g., Chx10, Cyclin D1, and Pax6) revealed another 22 bp motif (Fig. 2). Crx binding sites were present on enhancer elements hs546 and hs1170, while Hes1 binding sites were present on enhancer element hs546. Since these two enhancer elements (hs1170 and hs546) were both located in the non-coding region between Nr2f1 and Arrdc3, and since Arrdc3 was not active at E11.5 in the retina, the binding of Crx and Hes1 may participate in regulating the expression of Nr2f1. This result is supported by the finding that both Crx (Peng et al., 2005) and Nr2f1 (Inoue et al., 2010; Satoh et al., 2009) play a role in inducing photoreceptor cell fate, though at different stages. In addition, Crx has been shown to be expressed in bipolar cells, paired with Otx2 and Pou3f2, in binding with a 164bp Chx10 enhancer (Kim et al., 2008a). Hes1 has been shown to be active during early eye formation. By suppressing Math5, Hes1 was shown to be involved in the development of cone photoreceptors, amacrine, horizontal and ganglion cells from the RPCs (Le et al., 2006; Lee et al., 2005).

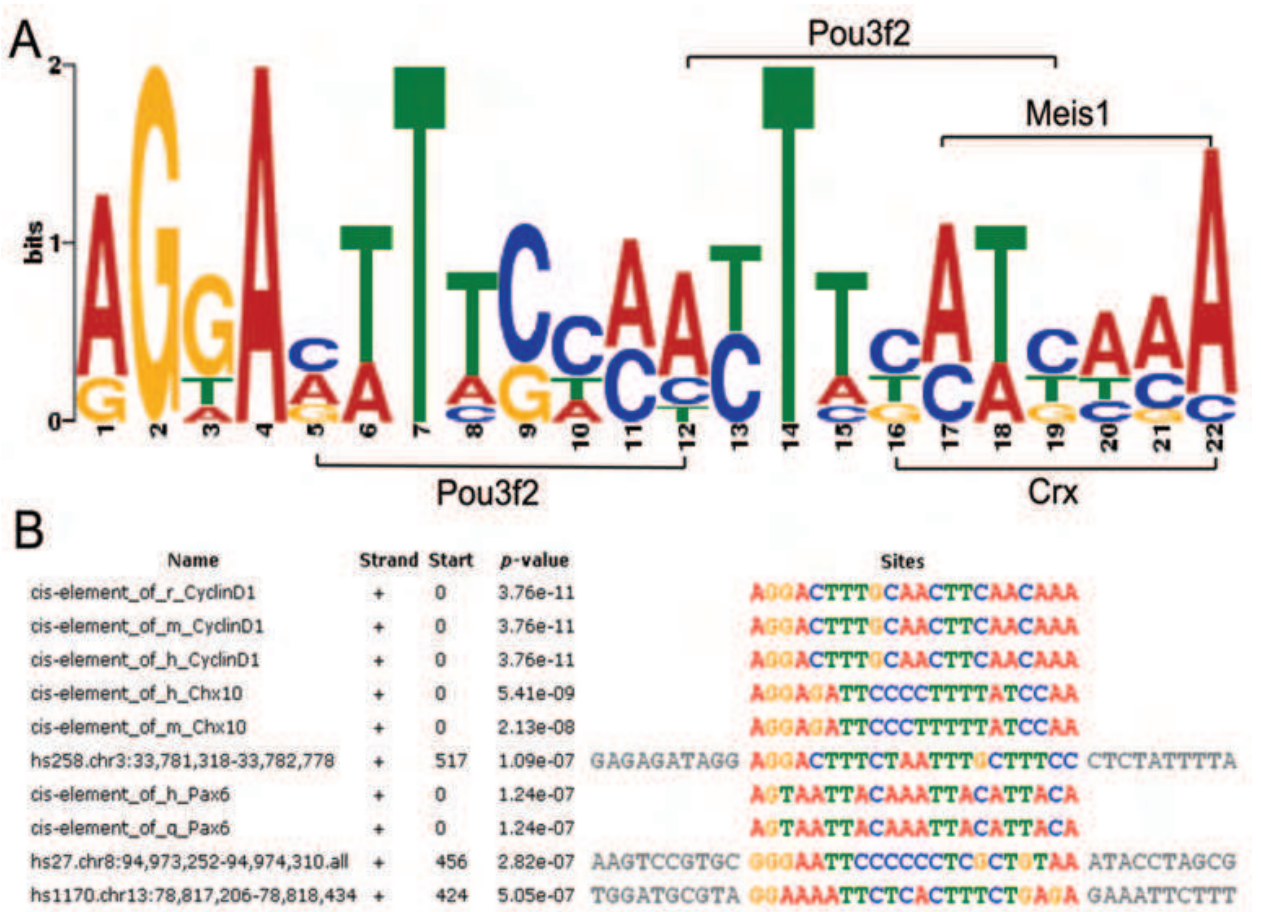


Fig. 2. A 22 bp motif is present in a subset of enhancer elements and *cis*-elements of RPC-specific genes, (e.g., Chx10, Cyclin D1, Pax6). Sequence alignment was performed using MEME among enhance elements (hs258, hs546, and hs1170) and *cis*-elements of genes Chx10, Cyclin D1, Pax6. A. a SeqLog presentation of the 22bp motif . This 22 bp motif contains binding sites for 3 factors: Pou3f2, Meis1 and Crx. B. Sequence alignment between elements mentioned above. Abbreviation: r, rat; m, mouse; h, human; q, quail.

Meis1 together with Meis2, as members of the TALE-homeodomain protein Homothorax (Hth) related protein family, were known to be expressed in the RPCs of mouse and chick (Heine et al., 2008). Meis1 was expressed in RPCs throughout the entire neurogenesis period, and Meis2 was expressed more specifically in RPCs before the initiation of retina differentiation. Together, they function to maintain the RPCs in a rapid proliferating state and control the expression of other ocular genes, e.g., Pax6, CyclinD1, Six3 and Chx10 (Bessa et al., 2008; Heine et al., 2008). Since Meis1 binding sites are present in a subset of retina-specific enhancers, Meis1 may function as an RPC-specific factor. Since the onset of mouse retina neurogenesis is approximately at E10.5 when the ganglion cells first appear (Leo M. Chalupa, 2008). By E11.5, RPCs of all six cell types are highly active. Therefore, binding of Meis1 with enhancers might influence the cell fate of these RPCs.

The presence of common Pbx2 binding sites may indicate a novel functional role of Pbx2 in RPCs, since the function of Pbx2 in retinal development has not been documented. Previous studies have shown that Pbx2 is expressed in the zebrafish retina and tectum (French et al., 2007) together with Pbx1 and Meis1, and down-regulation in their expression caused by the deficiency of Prep, the prolyl endopeptidase will lead to eye anomalies (Deflorian et al., 2004; Ferretti et al., 2006). Pbx and Meis proteins are major DNA-binding partners that form abundant complexes (Chang et al., 1997). Thus, there is a possibility that Pbx2 may function in the development of RPCs via the interaction with Meis1 and also regulate other RPC-specific genes (e.g., Irx5, Nr2f1, etc) through enhancer binding (Table 1).

Tcf3 is not yet known to have a function in embryonic retinal development. However, since Tcf3 binding sites are present among the retina-specific enhancer elements, and Tcf3 is expressed in the retina during embryogenesis, its specific function in retinal development needs to be confirmed.

2.5 Generation of transcriptional regulatory network for early retinal development

Based on the available expression data from VISTA Enhancer Browser and gene expression databases (Table 2), it is known that these 8 enhancer elements and their common binding *trans*-acting factors are active during embryonic development in the retina. Among the 8 retina-specific enhancer elements, we have identified 6 common *trans*-acting factors. These 6 predicted factors are experimentally verified key protein factors known to be involved in regulating gene expression and cell differentiation of progenitor cells during embryonic retinal development (Table 3).

Retina-specific gene expression is most likely determined by two kinds of interactions: (1) the enhancers with their binding protein factors, and (2) the protein factors with their interacting partners. The information about these interactions was used to generate the transcriptional regulatory networks important for retinal development. Therefore, transcriptional regulatory networks of embryonic retina were predicted based on these 6 common/key *trans*-acting factors (Table 3) and their known interacting partners (Table 5).

To construct retinal transcriptional regulatory networks, a java-based software program named BioTapestry (Longabaugh et al., 2009) (<http://www.biotapestry.org/>, version 5.0.2) was used to organize the factors and their known interacting partners. BioTapestry is a network facilitating software program designed for dealing with systems that exhibit increasingly complex over time, such as genetic regulatory networks. Its unique annotation system allows the illustration of enhancer-regulated gene expression and connection between factors. Experimental evidence can also be added to network elements after the network was built, as a proof of particular interactions. We only used the presenting

Factor name	Reference cited
Cabp5	(Kim et al., 2008a)
Chx10	(Hatakeyama et al., 2001)
CyclinD1	(Bessa et al., 2008; Heine et al., 2008)
Foxn4	(Shengguo Li, 2004)
Grk1	(Young and Young, 2007)
Grmb	(Kim et al., 2008a)
Hes6	(Bae et al., 2000)
Mash3	(Hatakeyama et al., 2001; Satow et al., 2001)
Math5	(Lee et al., 2005)
Nestin	(Rowan and Cepko, 2005)
NeuroD1	(Conte et al., 2010)
Nr2f1	(Inoue et al., 2010; Satoh et al., 2009)
Otx2	(Kim et al., 2008a; Young and Young, 2007)
Pax6	(Ferretti et al., 2006; Lee et al., 2005; Oliver et al., 1995)
Prep1	(Deflorian et al., 2004; Ferretti et al., 2006)
Rax	(Heine et al., 2008; Martinez-de Luna et al., 2010)
Six3	(Oliver et al., 1995)
Six6	(Conte et al., 2010)

Table 5. A list of protein factors that interact with the 6 key *trans*-acting factors in a network model

In summary, the computational method we developed in this study can be described as following. First, experimentally verified enhancer elements can be selected from enhancer databases, e.g., the Vista Enhancer Browser, based on tissue/cell-specific expression patterns derived from the enhancer element and its flanking gene (Fig. 4A-B). These tissue-specific enhancer elements can be located in the non-coding regions in inter- or intra-genetic sequences. Then, the *trans*-acting factor binding sites (TFBS) of all tissue-specific enhancer elements can be predicted using TFBS search tools such as TESS and MatInspector. Common binding sites shared by all tissue-specific enhancer elements or subsets of elements are later determined as shown in (Fig. 4C). Those common factors can be further analyzed according to their expression pattern. Only the ones with spatio-temporal expression patterns can be selected as key factors for constructing a tissue-specific transcriptional regulatory network. In addition, factors that interact with these key factors can also be found from the literature. Finally, these enhancers, genes, factors and interactions can be pieced together to build the network (Fig. 4D).

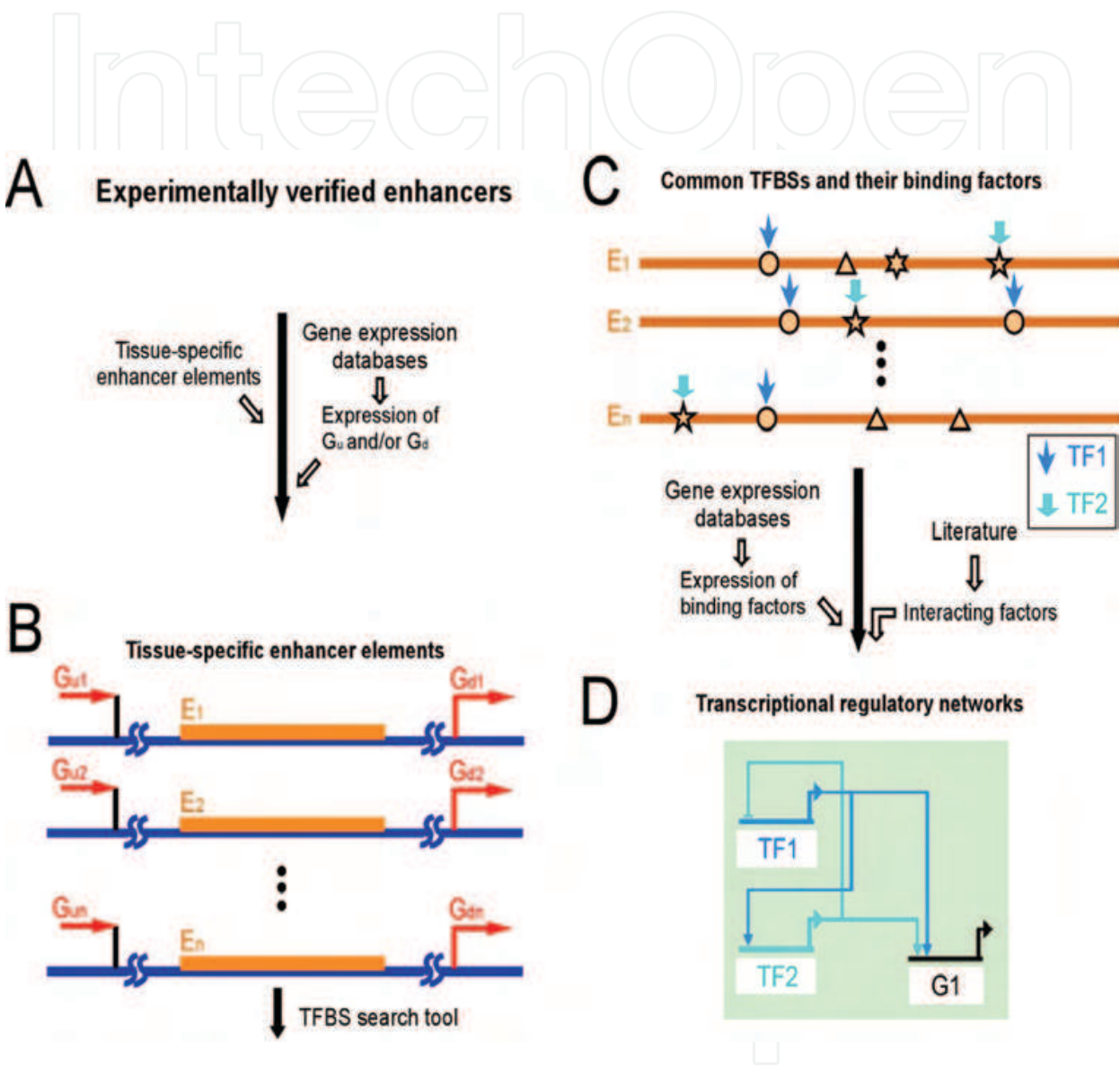


Fig. 4. Computational analysis of TFBSs and transcriptional regulatory networks for tissue/cell-specific gene expression. A. Selection of experimentally verified enhancer elements from enhancer databases. B. Depiction of enhancer elements and their flanking

genes. Orange boxes represent tissue-specific enhancer elements. Red bars represent transcript start sites of downstream flanking genes. Black bars represent the end of the last exon of upstream flanking genes. Enhancer elements in the intronic region of a gene were not illustrated. C. Comparison of the *trans*-acting factor binding sites (TFBSs). Two examples of common TFBS-TF pairs are illustrated by pairs of circle/azure arrows and pentagon/cyan arrows. Other polygons on the enhancer elements (orange bars) represent binding sites that are not common to all members. D. A simple example of a tissue-specific transcriptional regulatory network generated with two key factors (TF1 and TF2) and their interacting genes (G). The thick horizontal lines on top of factor and gene names (TF1, TF2 and G1) represent the *cis*-regulatory region of the corresponding genes. Arrows and bars terminating on this line illustrate the input from other factors, promoters or repressors, respectively. The arrow derived from the thick line represents the regulatory outputs. Abbreviation: E, enhancer element; G, gene; Gd, downstream gene; Gu, upstream gene; TF, *trans*-acting (e.g., transcription) factor; TFBS, transcription factor binding site.

3. Conclusion

In this study we have explored a new way of using existing TFBS-finding methods to predict *trans*-acting factors and networks that regulate tissue-specific gene expression (Fig. 4). As a proof-of-principle study, using this method, we have identified experimentally verified transcription factors (Pou3f2, Crx, Meis1, and Hes1) and their transcriptional regulatory networks that are known to be important for mouse embryonic retinal development. This not only provides a general idea about the development of the RPCs and retinal cell differentiation, but also validates the effectiveness of our newly developed method. Furthermore, we predicted that two other factors (Pbx2 and Tcf3, expressed in retina) may have a novel functional role in embryonic retinal development, which generates new hypotheses for future experimentation, i.e., to test the involvement of the two factors, Pbx2 and Tcf3, in the development of RPCs. This method is based on the assumption that non-coding DNA sequences contain signals regulating tissue-specific gene expression. The feasibility of this method relies on the existing data of experimentally verified tissue-specific enhancers (Visel et al., 2007) and available information of tissue-specific gene expression (Finger et al., 2011; Richardson et al., 2010). The identification of retina-specific *trans*-acting factors and networks indicates that our method is useful for the analysis of TFBSs and transcriptional regulatory networks. Since our method utilizes the existing/known information about tissue-specific enhancer elements and gene expression, we will not be able to identify novel factors that are involved in the transcriptional regulatory networks. In order to reconstruct a more sophisticated network in future studies, we will need to include all of the retina-specific enhancer elements. Finally, this method can be applied to the analysis of TFBSs and transcriptional regulatory networks in other tissue types.

4. Acknowledgement

This work is supported in part by grants (EY018738 and EY019094) from the National Institute of Health, the New Jersey Commission on Spinal Cord Research (10A-003-SCR1 and 08-3074-SCR-E-0), and Busch Biomedical Research Awards (6-49121). The authors thank the Cai lab members for helpful discussions and for proof-reading the manuscript.

5. References

- Bae, S., Bessho, Y., Hojo, M., and Kageyama, R. (2000). The bHLH gene Hes6, an inhibitor of Hes1, promotes neuronal differentiation. *Development* 127, 2933-2943.
- Bailey, T.L., and Elkan, C. (1994). Fitting a mixture model by expectation maximization to discover motifs in biopolymers. *Proc Int Conf Intell Syst Mol Biol* 2, 28-36.
- Bessa, J., Tavares, M.J., Santos, J., Kikuta, H., Laplante, M., Becker, T.S., Gómez-Skarmeta, J.L., and Casares, F. (2008). meis1 regulates cyclin D1 and c-myc expression, and controls the proliferation of the multipotent cells in the early developing zebrafish eye. *Development* 135, 799-803.
- Cartharius, K., Frech, K., Grote, K., Klocke, B., Haltmeier, M., Klingenhoff, A., Frisch, M., Bayerlein, M., and Werner, T. (2005). MatInspector and beyond: promoter analysis based on transcription factor binding sites. *Bioinformatics* 21, 2933-2942.
- Catena, R., Tiveron, C., Ronchi, A., Porta, S., Ferri, A., Tatangelo, L., Cavallaro, M., Favaro, R., Ottolenghi, S., Reinbold, R., *et al.* (2004). Conserved POU binding DNA sites in the Sox2 upstream enhancer regulate gene expression in embryonic and neural stem cells. *J Biol Chem* 279, 41846-41857.
- Chang, C., Jacobs, Y., Nakamura, T., Jenkins, N., Copeland, N., and Cleary, M. (1997). Meis proteins are major in vivo DNA binding partners for wild-type but not chimeric Pbx proteins. *Mol Cell Biol* 17, 5679-5687.
- Cheng, C.W., Chow, R.L., Lebel, M., Sakuma, R., Cheung, H.O.-L., Thanabalasingham, V., Zhang, X., Bruneau, B.G., Birch, D.G., Hui, C.-c., *et al.* (2005). The Iroquois homeobox gene, Irx5, is required for retinal cone bipolar cell development. *Developmental Biology* 287, 48-60.
- Cohen, D.R., Cheng, C.W., Cheng, S.H., and Hui, C.-c. (2000). Expression of two novel mouse Iroquois homeobox genes during neurogenesis. *Mechanisms of Development* 91, 317-321.
- Conte, I., Marco-Ferreres, R., Beccari, L., Cisneros, E., Ruiz, J.M., Tabanera, N., and Bovolenta, P. (2010). Proper differentiation of photoreceptors and amacrine cells depends on a regulatory loop between NeuroD and Six6. *Development* 137, 2307-2317.
- Corbo, J.C., Lawrence, K.A., Karlstetter, M., Myers, C.A., Abdelaziz, M., Dirkes, W., Weigelt, K., Seifert, M., Benes, V., Fritsche, L.G., *et al.* (2010). CRX ChIP-seq reveals the cis-regulatory architecture of mouse photoreceptors. *Genome Res* 20, 1512-1525.
- de Diego Otero, Y., Bakker, C., Ragho, P., Severijnen, L.A., Hoogeveen, A., Oostra, B., and Willemsen, R. (2000). Immunocytochemical characterization of FMRP, FXR1P and FXR2P during embryonic development in the mouse. *Gene Function & Disease* 1, 28-37.
- Deflorian, G., Tiso, N., Ferretti, E., Meyer, D., Blasi, F., Bortolussi, M., and Argenton, F. (2004). Prep1.1 has essential genetic functions in hindbrain development and cranial neural crest cell differentiation. *Development* 131, 613-627.
- Diez-Roux, G., Banfi, S., Sultan, M., Geffers, L., Anand, S., Rozado, D., Magen, A., Canidio, E., Pagani, M., Peluso, I., *et al.* (2011). A high-resolution anatomical atlas of the transcriptome in the mouse embryo. *PLoS biology* 9, e1000582.

- Ferretti, E., Villaescusa, J.C., Di Rosa, P., Fernandez-Diaz, L.C., Longobardi, E., Mazzieri, R., Miccio, A., Micali, N., Selleri, L., Ferrari, G., *et al.* (2006). Hypomorphic Mutation of the TALE Gene *Prep1* (*pKnox1*) Causes a Major Reduction of *Pbx* and *Meis* Proteins and a Pleiotropic Embryonic Phenotype. *Mol Cell Biol* 26, 5650-5662.
- Finger, J.H., Smith, C.M., Hayamizu, T.F., McCright, I.J., Eppig, J.T., Kadin, J.A., Richardson, J.E., and Ringwald, M. (2011). The mouse Gene Expression Database (GXD): 2011 update. *Nucleic Acids Research* 39, D835-D841.
- Frazer, K.A., Pachter, L., Poliakov, A., Rubin, E.M., and Dubchak, I. (2004). VISTA: computational tools for comparative genomics. *Nucleic Acids Research* 32, W273-W279.
- French, C.R., Erickson, T., Callander, D., Berry, K.M., Koss, R., Hagey, D.W., Stout, J., Wuennenberg-Stapleton, K., Ngai, J., Moens, C.B., *et al.* (2007). *Pbx* homeodomain proteins pattern both the zebrafish retina and tectum. *BMC Dev Biol* 7, 85.
- Gray, P.A., Fu, H., Luo, P., Zhao, Q., Yu, J., Ferrari, A., Tenzen, T., Yuk, D.I., Tsung, E.F., Cai, Z., *et al.* (2004). Mouse brain organization revealed through direct genome-scale TF expression analysis. *Science* 306, 2255-2257.
- Hatakeyama, J., Tomita, K., Inoue, T., and Kageyama, R. (2001). Roles of homeobox and bHLH genes in specification of a retinal cell type. *Development* 128, 1313-1322.
- Heine, P., Dohle, E., Bumsted-O'Brien, K., Engelkamp, D., and Schulte, D. (2008). Evidence for an evolutionary conserved role of *homothorax/Meis1/2* during vertebrate retina development. *Development* 135, 805-811.
- Hsiau, T.H., Diaconu, C., Myers, C.A., Lee, J., Cepko, C.L., and Corbo, J.C. (2007). The cis-regulatory logic of the mammalian photoreceptor transcriptional network. *PLoS One* 2, e643.
- Hu, J., Wan, J., Hackler, L., Jr., Zack, D.J., and Qian, J. (2010). Computational analysis of tissue-specific gene networks: application to murine retinal functional studies. *Bioinformatics* 26, 2289-2297.
- Inoue, M., Iida, A., Satoh, S., Kodama, T., and Watanabe, S. (2010). COUP-TFI and -TFII nuclear receptors are expressed in amacrine cells and play roles in regulating the differentiation of retinal progenitor cells. *Experimental Eye Research* 90, 49-56.
- Kent, W.J., Sugnet, C.W., Furey, T.S., Roskin, K.M., Pringle, T.H., Zahler, A.M., and Haussler, D. (2002). The human genome browser at UCSC. *Genome Res* 12, 996-1006.
- Kerschensteiner, D., Liu, H., Cheng, C.W., Demas, J., Cheng, S.H., Hui, C.-c., Chow, R.L., and Wong, R.O.L. (2008). Genetic Control of Circuit Function: *Vsx1* and *Irx5* Transcription Factors Regulate Contrast Adaptation in the Mouse Retina. *J Neurosci* 28, 2342-2352.
- Kim, D.S., Matsuda, T., and Cepko, C.L. (2008a). A Core Paired-Type and POU Homeodomain-Containing Transcription Factor Program Drives Retinal Bipolar Cell Gene Expression. *J Neurosci* 28, 7748-7764.

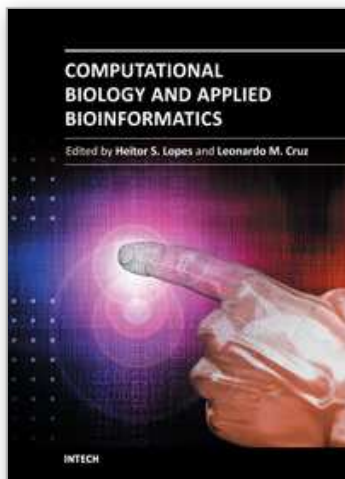
- Kim, D.S., Matsuda, T., and Cepko, C.L. (2008b). A core paired-type and POU homeodomain-containing transcription factor program drives retinal bipolar cell gene expression. *J Neurosci* 28, 7748-7764.
- Knuppel, R., Dietze, P., Lehnberg, W., Frech, K., and Wingender, E. (1994). TRANSFAC retrieval program: a network model database of eukaryotic transcription regulating sequences and proteins. *Journal of computational biology : a journal of computational molecular cell biology* 1, 191-198.
- Kumar, J.P. (2009). The molecular circuitry governing retinal determination. *Biochim Biophys Acta* 1789, 306-314.
- Le, T.T., Wroblewski, E., Patel, S., Riesenberger, A.N., and Brown, N.L. (2006). Math5 is required for both early retinal neuron differentiation and cell cycle progression. *Developmental Biology* 295, 764-778.
- Lee, H.Y., Wroblewski, E., Philips, G.T., Stair, C.N., Conley, K., Reedy, M., Mastick, G.S., and Brown, N.L. (2005). Multiple requirements for Hes1 during early eye formation. *Developmental Biology* 284, 464-478.
- Leo M. Chalupa, R.W.W., ed. (2008). *Eye, Retina, and Visual System of the Mouse* (The MIT Press).
- Longabaugh, W.J.R., Davidson, E.H., and Bolouri, H. (2009). Visualization, documentation, analysis, and communication of large-scale gene regulatory networks. *Biochimica et Biophysica Acta (BBA) - Gene Regulatory Mechanisms* 1789, 363-374.
- Martinez-de Luna, R.I., Moose, H.E., Kelly, L.E., Nekkhalapudi, S., and El-Hodiri, H.M. (2010). Regulation of retinal homeobox gene transcription by cooperative activity among cis-elements. *Gene* 467, 13-24.
- McEvelly, R.J., de Diaz, M.O., Schonemann, M.D., Hooshmand, F., and Rosenfeld, M.G. (2002). Transcriptional regulation of cortical neuron migration by POU domain factors. *Science* 295, 1528-1532.
- Mummenhoff, J., Houweling, A.C., Peters, T., Christoffels, V.M., and Rüther, U. (2001). Expression of Irx6 during mouse morphogenesis. *Mechanisms of Development* 103, 193-195.
- Oliver, G., Mailhos, A., Wehr, R., Copeland, N.G., Jenkins, N.A., and Gruss, P. (1995). Six3, a murine homologue of the sine oculis gene, demarcates the most anterior border of the developing neural plate and is expressed during eye development. *Development* 121, 4045-4055.
- Peng, G.-H., Ahmad, O., Ahmad, F., Liu, J., and Chen, S. (2005). The photoreceptor-specific nuclear receptor Nr2e3 interacts with Crx and exerts opposing effects on the transcription of rod versus cone genes. *Human Molecular Genetics* 14, 747-764.
- Portales-Casamar, E., Thongjuea, S., Kwon, A.T., Arenillas, D., Zhao, X., Valen, E., Yusuf, D., Lenhard, B., Wasserman, W.W., and Sandelin, A. (2010). JASPAR 2010: the greatly expanded open-access database of transcription factor binding profiles. *Nucleic Acids Research* 38, D105-110.
- Richardson, L., Venkataraman, S., Stevenson, P., Yang, Y., Burton, N., Rao, J., Fisher, M., Baldock, R.A., Davidson, D.R., and Christiansen, J.H. (2010). EMAGE mouse

- embryo spatial gene expression database: 2010 update. *Nucleic Acids Research* 38, D703-D709.
- Rowan, S., and Cepko, C.L. (2005). A POU factor binding site upstream of the Chx10 homeobox gene is required for Chx10 expression in subsets of retinal progenitor cells and bipolar cells. *Developmental Biology* 281, 240-255.
- Sandelin, A., Alkema, W., Engstrom, P., Wasserman, W.W., and Lenhard, B. (2004). JASPAR: an open-access database for eukaryotic transcription factor binding profiles. *Nucleic Acids Research* 32, D91-94.
- Satoh, S., Tang, K., Iida, A., Inoue, M., Kodama, T., Tsai, S.Y., Tsai, M.-J., Furuta, Y., and Watanabe, S. (2009). The Spatial Patterning of Mouse Cone Opsin Expression Is Regulated by Bone Morphogenetic Protein Signaling through Downstream Effector COUP-TF Nuclear Receptors. *J Neurosci* 29, 12401-12411.
- Satow, T., Bae, S.-K., Inoue, T., Inoue, C., Miyoshi, G., Tomita, K., Bessho, Y., Hashimoto, N., and Kageyama, R. (2001). The Basic Helix-Loop-Helix Gene *hesr2* Promotes Gliogenesis in Mouse Retina. *J Neurosci* 21, 1265-1273.
- Schug, J. (2002). Using TESS to Predict Transcription Factor Binding Sites in DNA Sequence (John Wiley & Sons, Inc.).
- Shengguo Li, Z.M., Xuejie Yang, (2004). Foxn4 Controls the Genesis of Amacrine and Horizontal Cells by Retinal Progenitors. *Neuron* 43, 795-807.
- Sicinski, P., Donaher, J.L., Parker, S.B., Li, T., Fazeli, A., Gardner, H., Haslam, S.Z., Bronson, R.T., Elledge, S.J., and Weinberg, R.A. (1995). Cyclin D1 provides a link between development and oncogenesis in the retina and breast. *Cell* 82, 621-630.
- Sugitani, Y., Nakai, S., Minowa, O., Nishi, M., Jishage, K., Kawano, H., Mori, K., Ogawa, M., and Noda, T. (2002). Brn-1 and Brn-2 share crucial roles in the production and positioning of mouse neocortical neurons. *Genes Dev* 16, 1760-1765.
- Swaroop, A., Kim, D., and Forrest, D. (2010). Transcriptional regulation of photoreceptor development and homeostasis in the mammalian retina. *Nat Rev Neurosci* 11, 563-576.
- Tang, K., Xie, X., Park, J.I., Jamrich, M., Tsai, S., and Tsai, M.J. (2010). COUP-TFs regulate eye development by controlling factors essential for optic vesicle morphogenesis. *Development* 137, 725-734.
- Valouev, A., Johnson, D.S., Sundquist, A., Medina, C., Anton, E., Batzoglou, S., Myers, R.M., and Sidow, A. (2008). Genome-wide analysis of transcription factor binding sites based on ChIP-Seq data. *Nat Meth* 5, 829-834.
- Visel, A., Blow, M.J., Li, Z., Zhang, T., Akiyama, J.A., Holt, A., Plajzer-Frick, I., Shoukry, M., Wright, C., Chen, F., *et al.* (2009). ChIP-seq accurately predicts tissue-specific activity of enhancers. *Nature* 457, 854-858.
- Visel, A., Minovitsky, S., Dubchak, I., and Pennacchio, L.A. (2007). VISTA Enhancer Browser—a database of tissue-specific human enhancers. *Nucleic Acids Research* 35, D88-D92.
- Wall, D.S., Mears, A.J., McNeill, B., Mazerolle, C., Thurig, S., Wang, Y., Kageyama, R., and Wallace, V.A. (2009). Progenitor cell proliferation in the retina is dependent on Notch-independent Sonic hedgehog/Hes1 activity. *J Cell Biol* 184, 101-112.

Young, J.E., Kasperek, E.M., Vogt, T.M., Lis, A., and Khani, S.C. (2007). Conserved interactions of a compact highly active enhancer/promoter upstream of the rhodopsin kinase (GRK1) gene. *Genomics* 90, 236-248.

IntechOpen

IntechOpen



Computational Biology and Applied Bioinformatics

Edited by Prof. Heitor Lopes

ISBN 978-953-307-629-4

Hard cover, 442 pages

Publisher InTech

Published online 02, September, 2011

Published in print edition September, 2011

Nowadays it is difficult to imagine an area of knowledge that can continue developing without the use of computers and informatics. It is not different with biology, that has seen an unpredictable growth in recent decades, with the rise of a new discipline, bioinformatics, bringing together molecular biology, biotechnology and information technology. More recently, the development of high throughput techniques, such as microarray, mass spectrometry and DNA sequencing, has increased the need of computational support to collect, store, retrieve, analyze, and correlate huge data sets of complex information. On the other hand, the growth of the computational power for processing and storage has also increased the necessity for deeper knowledge in the field. The development of bioinformatics has allowed now the emergence of systems biology, the study of the interactions between the components of a biological system, and how these interactions give rise to the function and behavior of a living being. This book presents some theoretical issues, reviews, and a variety of bioinformatics applications. For better understanding, the chapters were grouped in two parts. In Part I, the chapters are more oriented towards literature review and theoretical issues. Part II consists of application-oriented chapters that report case studies in which a specific biological problem is treated with bioinformatics tools.

How to reference

In order to correctly reference this scholarly work, feel free to copy and paste the following:

Ying Li, Haiyan Huang and Li Cai (2011). Prediction of Transcriptional Regulatory Networks for Retinal Development, Computational Biology and Applied Bioinformatics, Prof. Heitor Lopes (Ed.), ISBN: 978-953-307-629-4, InTech, Available from: <http://www.intechopen.com/books/computational-biology-and-applied-bioinformatics/prediction-of-transcriptional-regulatory-networks-for-retinal-development>

INTECH
open science | open minds

InTech Europe

University Campus STeP Ri
Slavka Krautzeka 83/A
51000 Rijeka, Croatia
Phone: +385 (51) 770 447
Fax: +385 (51) 686 166
www.intechopen.com

InTech China

Unit 405, Office Block, Hotel Equatorial Shanghai
No.65, Yan An Road (West), Shanghai, 200040, China
中国上海市延安西路65号上海国际贵都大饭店办公楼405单元
Phone: +86-21-62489820
Fax: +86-21-62489821

© 2011 The Author(s). Licensee IntechOpen. This chapter is distributed under the terms of the [Creative Commons Attribution-NonCommercial-ShareAlike-3.0 License](https://creativecommons.org/licenses/by-nc-sa/3.0/), which permits use, distribution and reproduction for non-commercial purposes, provided the original is properly cited and derivative works building on this content are distributed under the same license.

IntechOpen

IntechOpen