

We are IntechOpen, the world's leading publisher of Open Access books Built by scientists, for scientists

6,900

Open access books available

185,000

International authors and editors

200M

Downloads

Our authors are among the

154

Countries delivered to

TOP 1%

most cited scientists

12.2%

Contributors from top 500 universities



WEB OF SCIENCE™

Selection of our books indexed in the Book Citation Index
in Web of Science™ Core Collection (BKCI)

Interested in publishing with us?
Contact book.department@intechopen.com

Numbers displayed above are based on latest data collected.
For more information visit www.intechopen.com



Immunoglobulin G4-Related Inflammatory Aortic Aneurysm

Mitsuaki Ishida and Hidetoshi Okabe
Shiga University of Medical Science
Japan

1. Introduction

1.1 The concept of immunoglobulin G4-related sclerosing disease

Immunoglobulin G4 (IgG4) is the rarest subclass of IgG, which is numbered 1 through 4 in the order of their discovery and serum concentration, and normally constitutes only 3 to 6% of the total IgG fraction (Oxelius, 2008). IgG4 antibody has unique structural and functional properties, and the production of IgG4 appears to be driven in part by T helper 2 (Th2) cytokines that mediate allergic responses and IgE production (Nirula et al., 2011). The presence of IgG4 autoantibody in bullous skin diseases and high serum IgG4 concentration in patients with atopic dermatitis, bronchial asthma and bullous skin diseases have indicated that IgG4 plays an important role in these diseases (Jones et al., 1988; Jarvis et al., 2007). However, little attention had been paid to IgG4, before Hamano et al. revealed that serum IgG4 concentration was markedly elevated in patients with sclerosing pancreatitis (also called autoimmune pancreatitis) in 2001 (Hamano et al., 2001). Moreover, the same group also reported that the lesions of sclerosing pancreatitis and retroperitoneal fibrosis had abundant infiltration of IgG4-positive plasma cells (Hamano et al., 2002). Since then, many extrapancreatic lesions that share the same histopathological and immunohistochemical features as autoimmune pancreatitis have been reported in various organs, and the distinct clinicopathological disease entity, termed "IgG4-related sclerosing disease", was established, because irrespective of origin of the organ, these lesions show common clinicopathological features (Kamisawa & Okamoto, 2008; Cheuk & Chan, 2010).

1.2 Clinicopathological features of IgG4-related sclerosing disease

The characteristic clinical features of IgG4-related sclerosing disease are as follows: mostly middle-aged and elderly are affected, male predominance, multiple synchronous or metachronous lesions can be seen in different organs, and the presentation of the patients depend on the involved site(s).

Laboratory tests show that high serum IgG, IgG4, and IgE concentrations, and usually low titers of autoantibodies, such as antinuclear antibodies and rheumatoid factor. In particular, high serum IgG4 concentration (>135mg/dL) is the most important diagnostic factor of IgG4-related sclerosing disease.

Dramatic response to steroid therapy is another characteristic clinical finding of IgG4-related sclerosing disease; a decline in the serum IgG4 level and a reduction of lymphocytes

and IgG4-positive plasma cells in the involved tissues are frequently observed (Cheuk & Chan, 2010) (Table 1).

Age	Mostly middle-aged and elderly
Gender	Male predominance
Presentation	Symptom due to involved site(s) (usually mass formation)
Laboratory findings	Elevated IgG, IgG4 and IgE, especially IgG4 (>135mg/dL) Low titers of autoantibodies (e.g.: ANA, RF)
Treatment	Dramatic response to steroid therapy

Table 1. Clinical features of IgG4-related sclerosing disease

Pathologically, IgG4-related sclerosing disease is usually non-circumscribed and can extend into the surrounding tissues. The triad of pathological features of IgG4-related sclerosing disease is dense lymphoplasmacytic infiltration, sclerosis and obliterative phlebitis (Cheuk & Chan 2010) (Table 2). The variable proportion of the lymphoplasmacytic infiltrates and sclerosis in each case is responsible for the spectrum of histopathological patterns, such as pseudolymphomatous, mixed and sclerosing types (Cheuk & Chan, 2010). In the pseudolymphomatous type, the presence of dense lymphocytes and plasma cells without atypia are the predominant features, and reactive lymphoid follicles are commonly observed. Eosinophil infiltration is also occasionally seen. The mixed pattern, which is the most common histological subtype of IgG4-related sclerosing disease, is characterized by the presence of patchy dense lymphoplasmacytic infiltration and sclerosis. Lastly, the sclerosing type is characterized by the predominance of sclerosis with patchy aggregates of lymphocytes and plasma cells. The presence of obliterative phlebitis, which represents veins affected by segmental or circumferential transmural lymphoplasmacytic infiltrates, resulting in luminal occlusion, is also a characteristic finding of IgG4-related sclerosing disease. Immunohistochemical studies revealed abundant IgG4-positive plasma cell infiltration, and the ratio of IgG4-/IgG-positive plasma cells is usually up to 40% (Cheuk & Chan 2010).

a) Lymphoplasmacytic infiltration with/without lymphoid follicles and frequent eosinophil infiltration
b) Sclerosis
c) Obliterative phlebitis
d) No myofibroblast proliferation
e) Abundant IgG4-positive plasma cell infiltration
f) The ratio of IgG4-/IgG-positive plasma cells >40%

Table 2. Pathological features of IgG4-related sclerosing disease

1.3 The spectrum of IgG4-related sclerosing disease

The concept of IgG4-related sclerosing disease has been expanded to include various organs since the first identification in the pancreas (autoimmune pancreatitis). Many extrapancreatic organs, such as bile duct (Zen et al., 2004), liver (Zen et al., 2004), salivary gland (Kitagawa et al., 2005), lacrimal gland (Sato et al., 2008), lung (Zen et al., 2005), breast (Zen et al., 2005), kidney and urinary tract (Watson et al., 2006; Cornell et al., 2007; Kim et al., 2011), prostate (Nishimori et al., 2007), retroperitoneum (Hamano et al., 2002),

central nervous system (Chan et al., 2009; Shimatsu et al., 2009), thyroid (Li et al., 2011), nasal cavity (Ishida et al., 2009; Moteki et al., 2010), skin (Cheuk et al., 2009) and lymph node (Cheuk et al., 2008; Sato et al., 2010) (Table 3), have been shown to have the same histopathological findings and abundant IgG4-positive plasma cell infiltration as autoimmune pancreatitis.

In addition, recently, a part of inflammatory aortic aneurysm has been regarded as a spectrum of IgG4-related sclerosing disease (Kasashima et al., 2008, 2009, 2010; Ishida et al., 2009).

Multiple synchronous or metachronous lesions can be seen in different organs in the patients with IgG4-related sclerosing disease.

Pancreas	Autoimmune pancreatitis
Bile duct	Sclerosing cholangitis
Gallbladder	Sclerosing cholecystitis
Liver	Inflammatory pseudotumor, hepatitis
Salivary gland	Sclerosing sialadenitis (Küttner's tumor)
Lacrimal gland	Sclerosing dacryoadenitis (Mickulicz's disease)
Nasal cavity	Inflammatory pseudotumor, rhinosinusitis
Lung	Inflammatory pseudotumor (plasma cell granuloma), interstitial pneumonia
Breast	Sclerosing mastitis
Kidney and urinary tract	Tubulointerstitial nephritis, inflammatory pseudotumor
Prostate	Prostatitis
Central nervous system	Hypophysitis, sclerosing pachmeningitis
Thyroid	Hashimoto's thyroiditis
Aorta	Inflammatory aortic aneurysm
Retroperitoneum	Retroperitoneal fibrosis
Skin	Cutaneous pseudolymphoma
Lymph node	Lymphadenopathy

Table 3. The spectrum of IgG4-related sclerosing disease

2. IgG4-related inflammatory aortic aneurysm

Inflammatory aortic aneurysm (IAA), first described by Walker et al. in 1972, is a distinct clinicopathological entity (Walker et al., 1972). They reported that approximately 10% of 187 patients undergoing resection of abdominal aortic aneurysm was IAA. The key distinguishing features of IAA from atherosclerotic aortic aneurysm are as follows: a) marked thickening of the aortic wall, b) fibrosis of the adjacent retroperitoneum, and c) rigid adherence of the adjacent structures to the anterior aneurysmal wall (Walker et al., 1972). Histopathologically, IAA of the abdominal aorta shows a striking fibrosclerotic change in the adventitia with dense lymphoplasmacytic infiltration (Hellmann et al., 2007).

Patients with IAA of the abdominal aorta are younger than patients with atherosclerotic abdominal aortic aneurysm (Paravastu et al., 2009). The clinical symptoms are usually non-specific, such as abdominal and back pain, fever, and general fatigue (Paravastu et al., 2009). Laboratory tests reveal that white blood counts and C-reactive protein levels are usually elevated (Walker et al. 1972). Elevated serum IgG concentration and the presence of

autoantibodies are also frequently observed in the patients with IAA of the abdominal aorta (Vaglio A et al., 2003; Jagadesham et al., 2008)

IAA preferentially develops in the infrarenal abdominal aorta, and their presence in the ascending aorta and aortic arch is extremely rare (Ishida et al., 2009).

In 2008, Kasashima et al. proposed that IAA of the abdominal aorta can be divided into two subgroups: “IgG4-related” and “non-IgG4-related” (Kasashima et al., 2008). They reported that 4 of 10 patients with IAA of the abdominal aorta had high serum IgG4 concentration and abundant IgG4-positive plasma cell infiltrates in the aneurysmal wall, which are identical to the clinicopathological features of IgG4-related sclerosing disease. Henceforth, IgG4-related IAA of the thoracic aorta have also been reported (Ishida et al., 2009; Kasashima et al., 2010)

2.1.1 Abdominal aortic aneurysm

As shown Kasashima et al., there are clinicopathological differences between IgG4-related and non-IgG4-related IAA of the abdominal aorta (Kasashima, et al. 2008, 2009). With regard to incidence rate, IgG4-related IAA of the abdominal aorta accounts for 5% of all surgically resected abdominal aortic aneurysms, and 57% of IAA of the abdominal aorta (Kasashima et al. 2009).

Age/Gender	No difference
Aneurysmal diameter	No difference
Symptom	More frequency of abdominal or back pain in non-IgG4-related cases
History of autoimmune and allergic diseases	More frequent in IgG4-related cases (food or drug allergy, bronchial asthma and rheumatoid arthritis)
Serum IgG	No difference
Serum IgG4	Markedly higher in IgG4-related cases
Serum IgE	Higher in IgG4-related cases
Adventitial thickening	Thicker in IgG4-related cases
IgG-positive cells	Mildly superior in IgG4-related cases
IgG4-positive cells	More numerous in IgG4-related cases
IgG4/IgG cells ratio	More higher in IgG4-related cases
Neutrophils infiltration	Higher in non-IgG4-related cases
Eosinophils infiltration	Higher in IgG4-related cases
Lymphoid follicles	More frequent in IgG4-related cases
Obliterative phlebitis	More frequent in IgG4-related cases

Table 4. Clinicopathological differences between IgG4-related and non-IgG4-related inflammatory aortic aneurysms of the abdominal aorta.

Clinically, there are no differences in patient age, gender and aneurysmal diameter between IgG4-related and non-IgG4-related IAAs, however, IgG4-related cases are characterized by less frequent association with abdominal or back pain. The history of autoimmune diseases (such as rheumatoid arthritis and idiopathic thrombocytopenic purpura), bronchial asthma and food or drug allergy are more frequent in IgG4-related cases than non-IgG4-related cases. Characteristically, serum IgG4 concentration is significantly elevated in IgG4-related

cases (>135 mg/dL), although serum IgG concentration is not different in both groups. In addition, IgE concentration is higher in IgG4-related cases. Aneurysmal rupture is more common in non-IgG4-related cases, because severe thickening of the aneurysmal wall and adhesion to the surrounding tissue may prevent rupture in IgG4-related cases (Kasashima et al., 2010) (Table 4).

Most reported cases of IgG4-related IAA of abdominal aorta have no association with other IgG4-related sclerosing diseases, however, some cases of IgG4-related IAA of the abdominal aorta with autoimmune pancreatitis have been reported (Ito et al., 2008; Tseng et al., 2009; Matsuki et al., 2010).

Pathologically, IgG4-related IAA fundamentally has the similar histopathological findings of IgG4-related sclerosing disease. IgG4-related IAA is characterized by significant thickening of the adventitia more so than non-IgG4-related cases (Figure 1), although all IAA cases generally have marked thickening of the adventitia (Figure 6). In IgG4-related cases, dense lymphoplasmacytic infiltrates with lymphoid follicles are observed in the adventitia (Figure 2). Eosinophil infiltration and perineural lymphoplasmacytic infiltration are common findings of IgG4-related cases (Figure 3), however, neutrophil infiltration is rarely seen. In contrast, neutrophil infiltration is occasionally seen in non-IgG4-related cases. In most IgG4-related cases, obliterative phlebitis, one of the characteristic findings of IgG4-related sclerosing disease, is present in the adventitia (Figure 4), although obliterative phlebitis is also observed in some non-IgG4-related cases, but at much lower frequency.

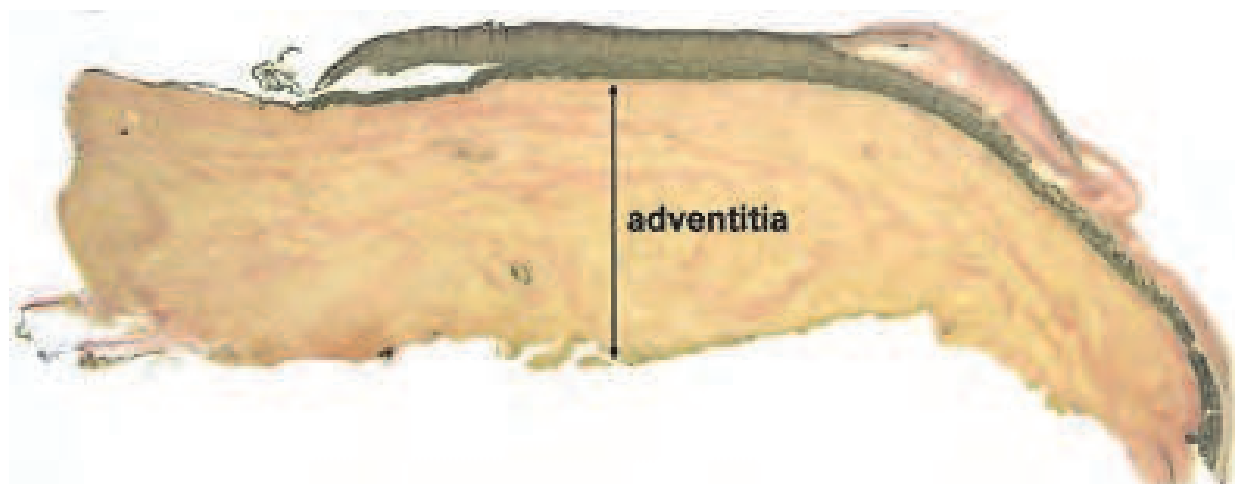


Fig. 1. Panoramic view of an IgG4-related inflammatory aortic aneurysm (Elastica van Gieson stain). Significant thickening of the adventitia is evident.

Atherosclerotic change is also observed in IgG4-related cases, because both IgG4-related and non-IgG4-related IAAs commonly affect middle-aged to elderly persons. However, atherosclerotic intimal thickening is more intense in non-IgG4-related cases (Kasashima et al., 2010).

Immunohistochemically, abundant IgG4-positive plasma cell infiltrate is observed in the adventitia of IgG4-related IAA (Figure 5), in contrast to non-IgG4-related IAA, which harbor only a few IgG4-positive plasma cells (Figure 7). The ratio of IgG4-/IgG-positive plasma cells is markedly higher in IgG4-related cases (usually $>60\%$) as compared to non-IgG4-related cases (Kasashima et al., 2009).

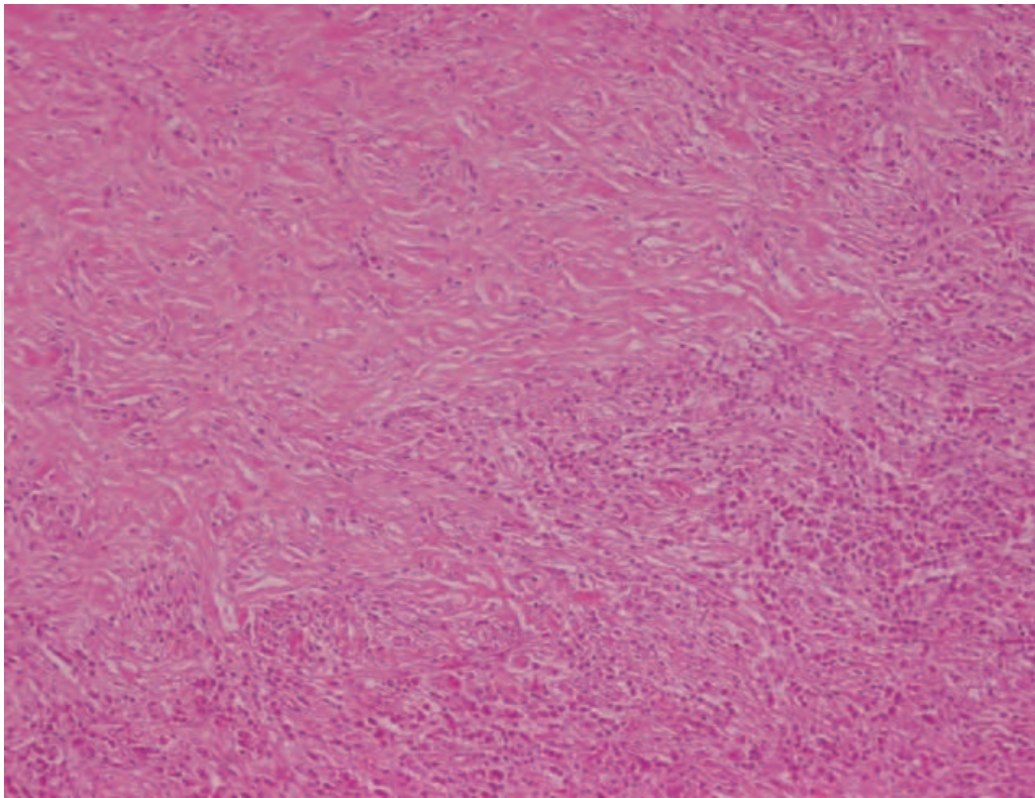


Fig. 2. Histopathological findings of IgG4-related inflammatory aortic aneurysm (H.E. stain). Lymphoplasmacytic infiltration and sclerosis in the adventitia.

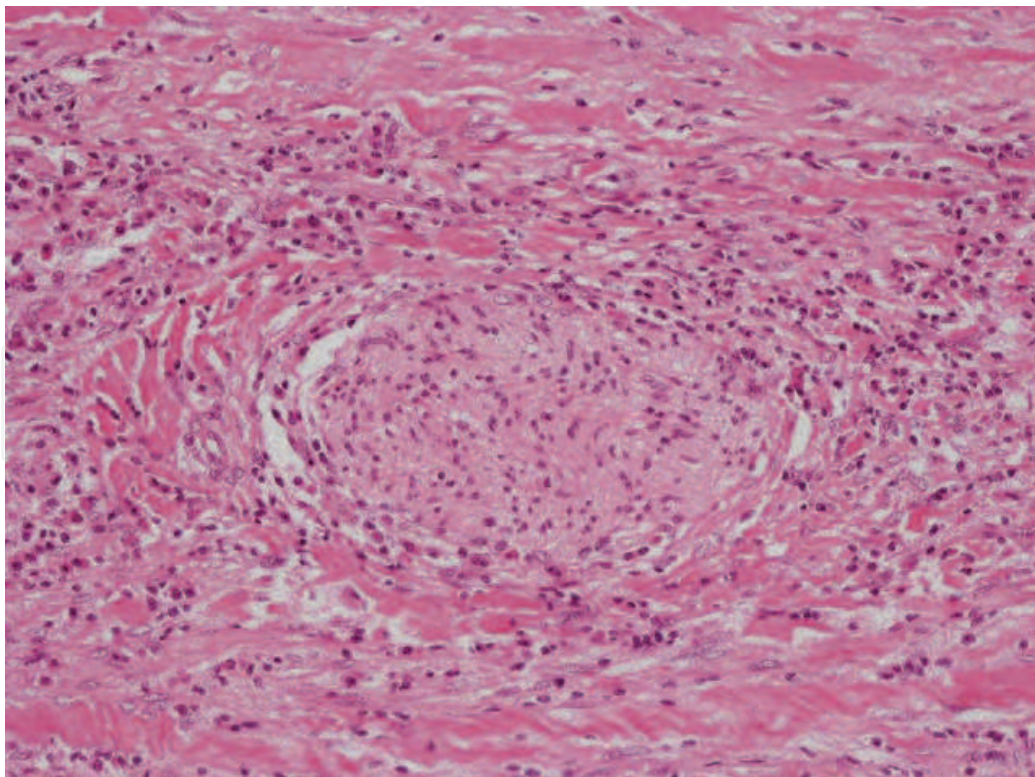


Fig. 3. Histopathological findings of IgG4-related inflammatory aortic aneurysm (H.E. stain). Perineural lymphoplasmacytic infiltration is occasionally observed.

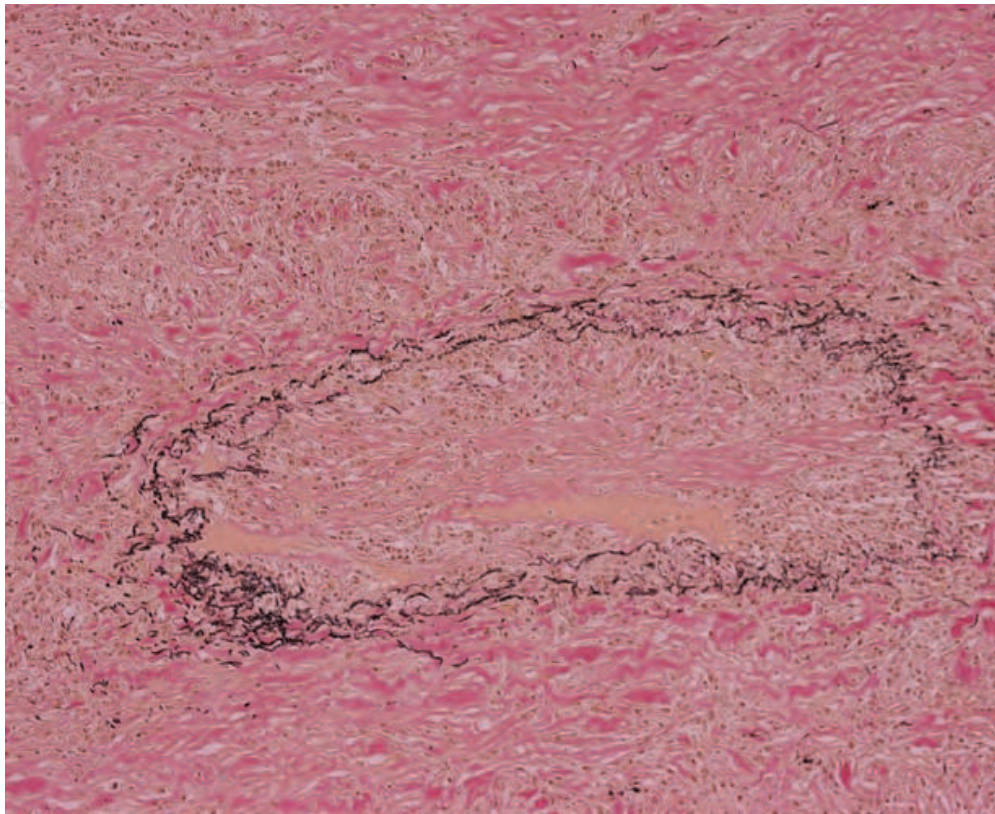


Fig. 4. Elastica van Gieson stain clearly showing obliterative phlebitis in the adventitia in IgG4-related inflammatory aortic aneurysm.

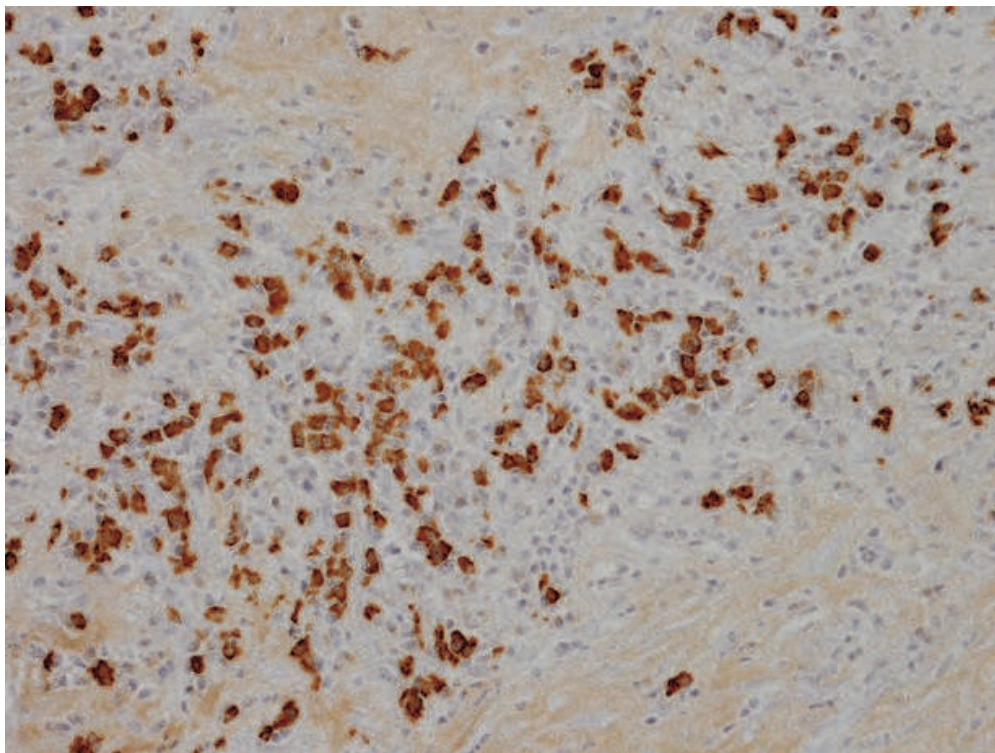


Fig. 5. Immunostaining for IgG4 in IgG4-related inflammatory aortic aneurysm. Abundant IgG4-positive plasma cell infiltration.

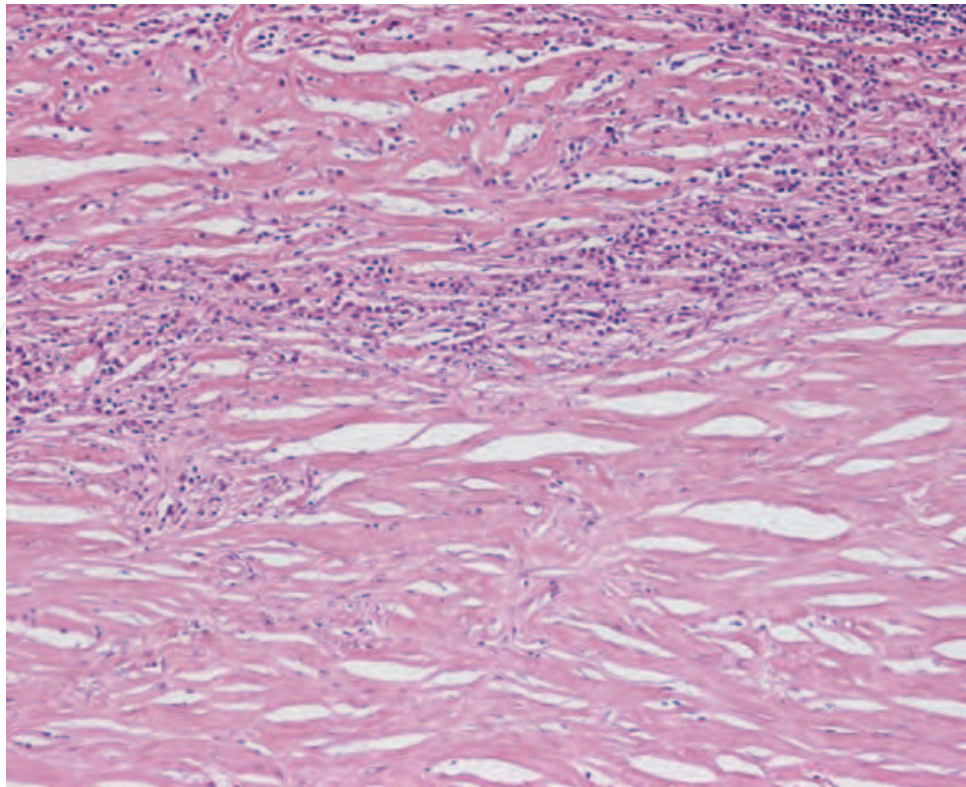


Fig. 6. Histopathological findings of non-IgG4-related inflammatory aortic aneurysm (H.E. stain). Lymphoplasmacytic infiltration and sclerosis are shown in the adventitia.

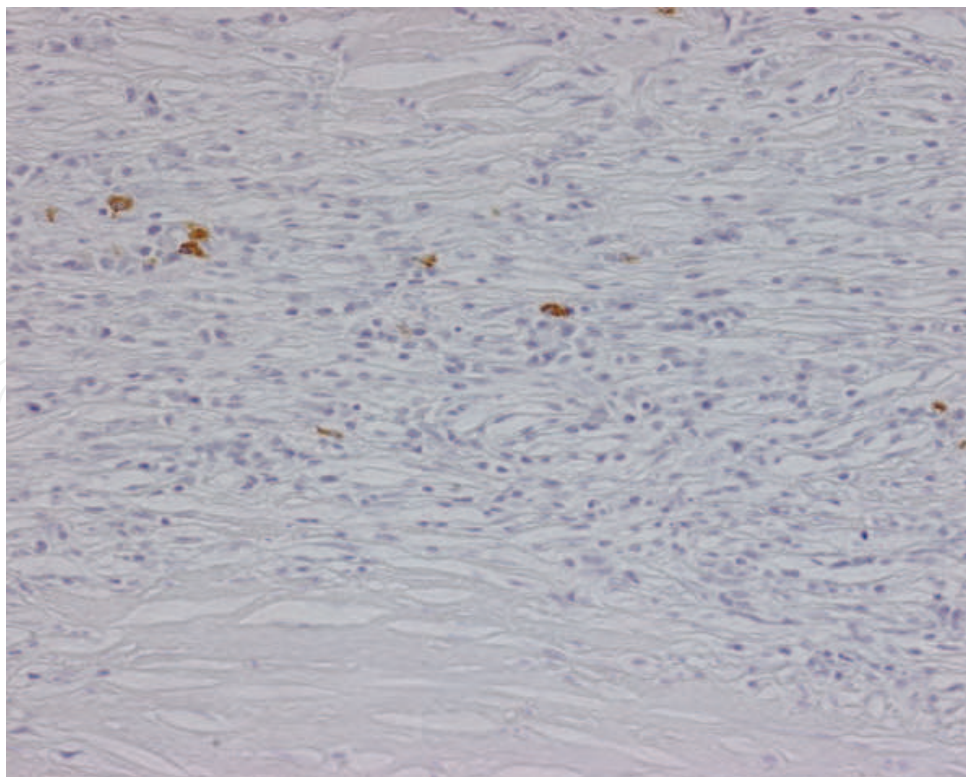


Fig. 7. Immunostaining for IgG4 in non-IgG4-related inflammatory aortic aneurysm. Only a few IgG4-positive plasma cells are detected in the adventitia.

2.1.2 Thoracic aortic aneurysm

In 2009, IgG4-related IAA of the aortic arch was first reported, and this report suggested that IgG4-related aortic lesion can occur in the thoracic aorta, as a counterpart of IgG4-related IAA of the abdominal aorta (Ishida et al., 2009). Since then, subsequent studies have revealed the clinicopathological features of IgG4-related lesions of the thoracic aorta. IgG4-related thoracic aortic lesions often represent aneurysmal cases, and several cases of lymphoplasmacytic aortitis without dilatation of the aorta are included in this entity, which may represent an early phase of IgG4-related aortic aneurysm (Kasashima et al., 2010; Stone et al., 2010).

Kasashima et al. reported that 4% of all surgically resected thoracic aortic lesions (which corresponded to 7% of thoracic aortic aneurysm) was IgG4-related. (Kasashima et al., 2010). These cases included inflammatory aneurysm, lymphoplasmacytic aortitis, and atherosclerotic aneurysms (Kasashima et al., 2010). Stone et al. reported that IgG4-related sclerosing lesions of thoracic aorta accounted for 9% of noninfectious thoracic aortitis and 75% of lymphoplasmacytic aortitis (Stone et al., 2010). These patients show similar clinical features to IgG4-related IAA of the abdominal aorta with a predilection for elderly males, medical history of bronchial asthma and allergy, and elevated white blood cell count and C-reactive protein levels. IgG4-related aortic aneurysm of the thoracic aorta develops frequently in the aortic arch and saccular form aneurysm (Kasashima et al., 2010). In addition, fibrous adherence to the surrounding tissue is more frequent as compared to non-IgG4-related cases (Kasashima et al., 2010).

Pathologically, IgG4-related IAA of the thoracic aorta also shows similar findings to IgG4-related IAA of the abdominal aorta including thickening of the adventitia, dense lymphoplasmacytic infiltration, obliterative phlebitis, frequent eosinophil infiltration, lymphoid follicle formation, and infrequent neutrophil infiltration. Immunohistochemically, abundant IgG4-positive plasma cell infiltration and high ratio of IgG4-/IgG-positive plasma cells (>60%) are observed (Ishida et al., 2009; Kasashima et al., 2010).

Interestingly, aortic dissection has been reported as one manifestation of IgG4-related lesions in the thoracic aorta (Stone et al., 2009, 2010). In such case, inflammation is denser in the media than in the adventitia, and medial laminar necrosis is also observed (Stone et al., 2009, 2010).

Some cases of IgG4-related lesions of the thoracic aorta associated with other IgG4-related sclerosing lesions, such as pancreas, submandibular gland and lymph node, have been reported (Stone et al., 2010).

2.2 Diagnostic criteria for IgG4-related IAA

The diagnostic criteria for IgG4-related IAA of the abdominal aorta have been previously outlined (Kasashima et al., 2009), and a recent study have found that these criteria may also be appropriate for IgG4-related thoracic aortic aneurysm (Kasashima et al., 2010).

- a. Diffuse fibrous thickening of the adventitia (>4mm)
- b. Abundant lymphoplasmacytic infiltrates
- c. Numerous IgG4-positive plasma cells (60/ high-power fields)
- d. Ratio of IgG4-/IgG-positive plasma cells >60%

2.3 Differential diagnosis of IgG4-related IAA

The chief differential diagnosis of IgG4-related IAA is non-IgG4-related IAA, which is not difficult due to the distinct features of each type. The clinicopathological differential diagnostic considerations are described in 2.1.2.

Takayasu arteritis must be taken into consideration during diagnosis of IgG4-related IAA of the thoracic aorta. Takayasu arteritis is well known as a “pulseless disease”, which chiefly strikes young women, especially in Asian and South American countries, and mainly involves the ascending aorta, aortic arch, and their main branches, leading to the characteristic clinical findings of pulselessness and ophthalmic and/or cerebral disorders (Numano et al., 2000). Histopathologically, Takayasu arteritis is characterized by involvement of all three layers of the arterial wall, thickened adventitia with lymphocyte and histiocyte infiltrates, destruction of smooth muscles and elastic fiber network of the medina, occasional medial necrosis and intimal fibrosis and/or atherosclerotic changes (Numano, 2000). The inflammatory process appears to begin at the vaso vasorum in the adventitia and these inflammatory processes result in stenosis of vessel lumina and sometimes induce aneurysmal formation (Numano, 2000). IgG4-related IAA does not show vascular stricture and stenosis. Thus, the differential diagnostic features include patient’s age, histopathological findings, especially involvement of all three arterial wall layers found only in Takayasu arteritis, and immunohistochemical findings for IgG4. In addition, epithelioid granuloma, giant cells, and fibrinoid necrosis are extremely rare in IgG4-related IAA (Kasashima et al. 2010).

Syphilitic aortitis is also included in the differential diagnosis, because it is also characterized by frequent aneurysmal formation and lymphoplasmacytic infiltration in the adventitia. Lymphoplasmacytic infiltration accompanying destruction of the medina and endarteritis obliterans of the vasa vasorum are usually observed in syphilitic aortitis (Heggtveit 1962), but not in IgG4-related IAA. The serological examination for *Treponema pallidum* agglutination is also useful.

a) Non-IgG4-related IAA
b) Takayasu areteritis
c) Syphilitic arteritis

Table 5. Chief differential diagnoses of IgG4-related IAA

3. The association with chronic periaortitis

Chronic periaortitis encompasses idiopathic retroperitoneal fibrosis, IAA and perianeurysmal retroperitoneal fibrosis (Jois et al., 2004). The histopathological characteristic are identical, which include periaortic fibrosis with extension to involve the adjacent structure, and lymphoplasmacytic infiltration in the aortic adventitia. These characteristic histopathological findings also correspond to IgG4-related sclerosing disease, and abundant IgG4-positive plasma cells infiltration is also observed in chronic periaortitis. Therefore, both retroperitoneal fibrosis and IgG4-related IAA of the abdominal aorta are recognized as a manifestation of “IgG4-related chronic periaortitis” (Kasashima et al., 2008, 2011), together with mediastinal fibrosis and IgG4-related IAA of the thoracic aorta (Ishida et al., 2009; Kasashima et al., 2011).

4. Treatment of IgG4-related IAA

Dramatic response to steroid therapy is the characteristic clinical finding of IgG4-related sclerosing disease. It is speculated that steroid therapy may be also effective in IgG4-related IAA, because adventitial thickening and fibrous adhesion to the surround organs may be

reduced (Kasashima et al., 2009). However, most of the reported cases of IgG4-related IAA were surgically resected cases, therefore, steroid therapy was not administrated and no data is available.

Recently, some cases of IgG4-related IAA in whom steroid therapy could reduce the aneurysmal wall thickening and fibrous adhesion of IAA, have been reported (Kasashima et al., 2010; Yabe et al., 2010). However, it must be considered that the risk of aneurysmal rupture might be elevated by the thinning of the adventitia. Additional clinicopathological studies are required to establish the treatment strategy for IgG4-related IAA.

Finally, multiple metachronous or synchronous development is one of the characteristic findings of IgG4-related sclerosing disease, therefore, systemic surveillance and follow-up are required in cases of IgG4-related IAA.

5. Conclusion

IgG4-related sclerosing disease is a distinct clinicopathological entity and may manifest as IAA of the thoracic and abdominal aorta. IgG4-related IAA shows characteristic clinical features, and histopathological diagnostic criteria of IgG4-related IAA have been recently proposed. However, further studies are needed to clarify the spectrum of IgG4-related vascular lesions and treatment strategy of IgG4-related IAA.

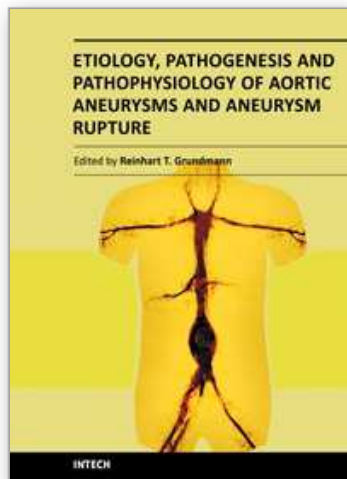
6. References

- Chan, SK.; Cheuk, W.; Chan, KT. & Chan, JK. (2009). IgG4-related sclerosing pachymeningitis: a previously unrecognized form of central nervous system involvement in IgG4-related sclerosing disease. *American Journal of Surgical Pathology*, Vol. 33, No. 8, (Aug), pp. 1249-1252, ISSN 0147-5185
- Cheuk, W.; Yuen, HK.; Chu, SY.; Chiu, EK.; Lam, LK. & Chan JK. (2008). Lymphadenopathy of IgG4-related sclerosing disease. *American Journal of Surgical Pathology*, Vol. 32, No. 5, (May), pp. 671-681, ISSN 0147-5185
- Cheuk, W.; Lee, KC.; Chong, LY.; Yuen, ST. & Chan, JK. (2009). IgG4-related sclerosing disease: a potential new etiology of cutaneous pseudolymphoma. *American Journal of Surgical Pathology*, Vol. 33, No. 11, (Nov), pp. 1713-1719, ISSN 0147-5185
- Cheuk, W. & Chan, JK. (2010). IgG4-related sclerosing disease: a critical appraisal of an evolving clinicopathological entity. *Advances in Anatomic Pathology*, Vol. 17, No. 5, (Sep), pp. 303-332, ISSN 1072-4109
- Cornell, LD. (2010). IgG4-related tubulointerstitial nephritis. *Kidney International*, Vol. 78, No. 10 (Nov), pp. 1016-1023, ISSN 0085-2538
- Hamano, H.; Kawa, S.; Horiuchi, A.; Unno, H.; Furuya, N.; Akamatsu, T.; Fukushima, M.; Nikaido, T.; Nakayama, K.; Usuda, N. & Kiyosawa, K. (2001). High serum IgG4 concentration in patients with sclerosing pancreatitis. *New England Journal of Medicine*, Vol. 344, No. 10, (Mar), pp. 732-738, ISSN 0028-4793
- Hamano, H.; Kawa, S.; Ochi, Y.; Unno, H.; Shiba, N.; Wajiki, M.; Nakazawa, K.; Shimojo, H. & Kiyosawa, K. (2002). Hydronephrosis associated with retroperitoneal fibrosis and sclerosing pancreatitis. *Lancet*, Vol. 359, No. 9315, (Apr), pp. 1403-1404, ISSN 0140-6736
- Heggtveit, HA. (1964). Syphilitic aortitis. A clinicopathologic autopsy study of 100 cases, 1950 to 1960. *Circulation*, Vol. 29, (Mar), pp. 346-355, ISSN 0009-7322

- Hellmann, DB.; Grand, DJ. & Freischlag, JA. (2007). Inflammatory abdominal aortic aneurysm. *JAMA-Journal of the American Medical Association*, Vol. 297. No. 4, (Jan), pp. 395-400, ISSN 0098-7384
- Ishida, M.; Hotta, M.; Kushima, R.; Asai, T. & Okabe, H. (2009). IgG4-related inflammatory aortic aneurysm of the aortic arch. *Pathology International*, Vol. 59, No. 4, (Apr), pp. 269-273, ISSN 1320-5463
- Ishida, M.; Hotta, M.; Kushima, R.; Shibayama, M.; Shimizu, T. & Okabe, H. (2009). Multiple IgG4-related sclerosing lesions in the maxillary sinus, parotid gland and nasal septum. *Pathology International*, Vol. 59, No. 9, (Sep), pp. 670-675, ISSN 1320-5463
- Ito, H.; Kaizaki, Y.; Noda, Y.; Fujii, S. & Yamamoto, S. (2008). IgG4-related inflammatory abdominal aortic aneurysm associated with autoimmune pancreatitis. *Pathology International*, Vol. 58, No. 7, (Jul), pp. 421-426, ISSN 1320-5463
- Jagadesham, VP.; Scott, DJ. & Carding, SR. (2008). Abdominal aortic aneurysms: an autoimmune disease? *Trends in Molecular Medicine*, Vol. 14, No. 12, (Dec), pp. 522-529, ISSN 1471-4914
- Jarvis, D.; Zock, JP.; Heinrich, J.; Svanes, C.; Verlato, G.; Olivieri, M.; Villani, S.; Ponzio, M.; Leynaert, B.; Sunyer, J.; Dahlman-Hoglund, A.; Chinn, S.; Luczynska, C.; Norbäck, D. & Burney, P. (2007). Cat and dust mite allergen levels, specific IgG and IgG4, and respiratory symptoms in adults. *Journal of Allergy and Clinical Immunology*, Vol. 119, No. 3, (Mar), pp. 697-704, ISSN 0091-6749
- Jois, RN.; Gaffney, K.; Marshall, T. & Scott, DG. (2004). Chronic periaortitis. *Rheumatology*, Vol. 43, No. 11, (Nov), pp. 1141-1146, ISSN 1462-0324
- Jones, CC.; Hamilton, RG. & Jordon, RE. (1988). Subclass distribution of human IgG autoantibodies in pemphigus. *Journal of Clinical Immunology*, Vol. 8, No. 1, (Jan), pp. 43-49, ISSN 0271-9142
- Kamisawa, T. & Okamoto, A. (2008). IgG4-related sclerosing disease. *World Journal of Gastroenterology*, Vol. 14, No. 25, (Jul), pp. 3948-3955, ISSN 1007-9327
- Kasashima, S.; Zen, Y.; Kawashima, A.; Konishi, K.; Sasaki, H.; Endo, M.; Matsumoto, Y.; Kawakami, K.; Kasashima, F.; Moriya, M.; Kimura, K.; Ohtake, H. & Nakanuma, Y. (2008). Inflammatory abdominal aortic aneurysm: close relationship to IgG4-related periaortitis. *American Journal of Surgical Pathology*, Vol. 32, No. 2, (Feb), pp. 197-204, ISSN 0147-5185
- Kasashima, S.; Zen, Y.; Kawashima, A.; Endo, M.; Matsumoto, Y. & Kasashima, F. (2009). A new clinicopathological entity of IgG4-related inflammatory abdominal aortic aneurysm. *Journal of Vascular Surgery*, Vol. 49, No. 5, (May), pp. 1264-1271, ISSN 0741-5214
- Kasashima, S.; Zen, Y.; Kawashima, A.; Endo, M.; Matsumoto, Y.; Kasashima, F.; Ohtake, H. & Nakanuma, Y. (2010). A clinicopathologic study of immunoglobulin G4-related sclerosing disease of the thoracic aorta. *Journal of Vascular Surgery*, Vol. 52, No. 6, (Dec), pp. 1587-1595, ISSN 0741-5214
- Kasashima, S. & Zen, Y. (2011). IgG4-related inflammatory abdominal aortic aneurysm. *Current Opinion in Rheumatology*, Vol. 23, No. 1, (Jan), pp. 18-23, ISSN 1040-8711
- Kim, SA.; Lee, SR.; Huh, J.; Shen, SS. & Ro, JY. (2011). IgG4-associated inflammatory pseudotumor of ureter: clinicopathologic and immunohistochemical study of 3 cases. *Human Pathology*, (in press), ISSN 0046-8177

- Kitagawa, S.; Zen, Y.; Harada, K.; Sasaki, M.; Sato, Y.; Minato, H.; Watanabe, K.; Kurumaya, H.; Katayanagi, K.; Masuda, S.; Niwa, H.; Tsuneyama, K.; Saito, K.; Haratate, J.; Takagawa, K. & Nakanuma, Y. (2005). Abundant IgG4-positive plasma cell infiltration characterizes chronic sclerosing sialadenitis (Küttner's tumor). *American Journal of Surgical Pathology*, Vol. 29, No. 6, (Jun), pp. 783-791, ISSN 0147-5185
- Li, Y.; Nishihara, E. & Kakudo, K. (2011). Hashimoto's thyroiditis: old concepts and new insights. *Current Opinion in Rheumatology*, Vol. 23, No. 1, (Jan), pp. 102-107, ISSN 1040-8711
- Matsuki, Y.; Sato, K.; Fujikawa, A.; Kyoto, Y.; Hashimoto, H. & Hakozaiki, Y. (2010). A case of incidentally detected IgG4-related sclerosing disease involving inflammatory abdominal aortic aneurysm and autoimmune pancreatitis. *Modern Rheumatology*, Vol. 20, No. 3, (Jun), pp. 306-310, ISSN 1439-7595
- Moteki, H.; Yasuo, M.; Hamano, H.; Uehara, T. & Usami, SI. (2010). IgG4-related chronic rhinosinusitis: a new clinical entity of nasal disease. *Acta Oto-Laryngologica*, (in press), ISSN 0001-6489
- Nirula, A.; Glaser, SM.; Kalled, SL. & Taylora, FR. (2011). What is IgG4? A review of the biology of a unique immunoglobulin subtype. *Current Opinion in Rheumatology*, Vol. 23, No. 1, (Jan), pp. 119-124, ISSN 1040-8711
- Nishimori, I.; Kohsaki, T.; Onishi, S.; Shuin, T.; Kohsaki, S.; Ogawa, Y.; Matsumoto, M.; Hiroi, M.; Hamano, H. & Sawa, S. (2007). IgG4-related autoimmune prostatitis: two cases with or without autoimmune pancreatitis. *Internal Medicine*, Vol. 46, No. 24, pp. 1983-1989, ISSN 0918-2918
- Numano, F.; Okawara, M.; Inomata, H. & Kobayashi, Y. (2000). Takayasu's arteritis. *Lancet*, Vol. 356, No. 9234, (Sep), pp. 1023-1025, ISSN 0140-6736
- Numano, F. (2000). Vasa vasorum, vasculitis and atherosclerosis. *International Journal of Cardiology*. Vol. 75, No. Suppl 1, (Aug), pp. S1-8, ISSN 0167-5273
- Oxelius, VA. (2008). Immunoglobulin constant heavy G subclass chain genes in asthma and allergy. *Immunologic Research*, Vol. 40, No. 2, pp. 179-191, ISSN 0257-277X
- Paravastu, SC.; Murray, D.; Ghosh, J.; Serracino-Inglott, F.; Smyth, JV. & Walker, MG. (2009). Inflammatory abdominal aortic aneurysms (IAAA): past and present. *Vascular and Endovascular Surgery*, Vol. 43, No. 4, (Aug-Sep), pp. 360-363, ISSN 1538-5744
- Sato, Y.; Ohshima, K.; Ichimura, K.; Sato, M.; Yamadori, I.; Tanaka, T.; Takata, K.; Morito, T.; Kondo, E. & Yoshino, T. (2008). Ocular adnexal IgG4-related disease has uniform clinicopathology. *Pathology International*, Vol. 58, No. 8, (Aug), pp. 465-470, ISSN 1320-5463
- Sato, Y.; Notohara, K.; Kojima, M.; Takata, K.; Masaki, Y. & Yoshino, T. (2010). IgG4-related disease: historical overview and pathology of hematological disorders. *Pathology International*, Vol. 60, No. 4, (Apr), pp. 247-258, ISSN 1320-5463
- Shimatsu, A.; Oki, Y.; Fujisawa, I. & Sano, T. (2009). Pituitary and stalk lesions (infundibulo-hypophysitis) associated with immunoglobulin G4-related systemic disease: an emerging clinical entity. *Endocrine Journal*, Vol. 56, No. 9, pp. 1033-1041, ISSN 0918-8959
- Stone, JH.; Khosroshahi, A.; Hilgenberg, A.; Spooner, A.; Isselbacher, EM. & Stone, JR. (2009). IgG4-related systemic disease and lymphoplasmacytic aortitis. *Arthritis & Rheumatism*, Vol. 60, No. 10, (Oct), pp. 3139-3145, ISSN 0004-3591

- Stone, JH.; Khosroshahi, A.; Deshpande, V. & Stone, JR. (2010). IgG4-related systemic disease accounts for a significant proportion of thoracic lymphoplasmacytic aortitis cases. *Arthritis Care & Research*, Vol. 62, No. 3, (Mar), pp. 316-312, ISSN 2151-464X
- Tseng, CW.; Tsai, JJ. & Chen, CC. (2009). Abdominal aortitis associated with autoimmune pancreatitis. *Clinical Gastroenterology and Hepatology*, Vol. 7, No. 1, (Jan), pp. e3-4, ISSN 1542-3565
- Vaglio, A.; Corradi, D.; Manenti, L.; Ferretti, S.; Garini, G. & Buzio, C. (2003). Evidence of autoimmunity in chronic periaortitis: a prospective study. *American Journal of Medicine*, Vol. 114, No. 6, (Apr), pp. 454-462, ISSN 0002-9343
- Walker, DL.; Bloor, K.; Williams, G. & Gillie, I. (1972). Inflammatory aneurysm of the abdominal aorta. *British Journal of Surgery*, Vol. 59, No. 8, (Aug), pp. 609-614, ISSN 0007-133
- Watson, SJ.; Jenkins, DA. & Bellamy, CO. (2006). Nephropathy in IgG4-related systemic disease. *American Journal of Surgical Pathology*, Vol. 30, No. 11, (Nov), pp. 1472-1477, ISSN 0147-5185
- Yabe, T.; Hamada, T.; Kubo, T.; Okawa, M.; Yamasaki, N.; Matsumura, Y.; Kitaoka, H. & Doi, Y. (2010). Inflammatory abdominal aortic aneurysm successfully treated with steroid therapy. *Journal of the American College of Cardiology*. Vol. 55, No. 25, (Jun), pp. 2877, ISSN 0735-1097
- Zen, Y.; Harada, K.; Sasaki, M.; Sato, Y.; Tsuneyama, K.; Haratake, J.; Kurumaya, H.; Katayanagi, K.; Masuda, S.; Niwa, H.; Morimoto, H.; Miwa, A.; Uchiyama, A.; Portmann, BC. & Nakanuma, Y. (2004). IgG4-related sclerosing cholangitis with and without hepatic inflammatory pseudotumor, and sclerosing pancreatitis-associated sclerosing cholangitis: do they belong to a spectrum of sclerosing pancreatitis? *American Journal of Surgical Pathology*, Vol. 28, No. 9, (Sep), pp. 1193-1203, ISSN 0147-5185
- Zen, Y.; Kasahara, Y.; Horita, K.; Miyayama, S.; Miura, S.; Kitagawa, S. & Nakanuma, Y. (2005). Inflammatory pseudotumor of the breast in a patient with a high serum IgG4 level: histologic similarity to sclerosing pancreatitis. *American Journal of Surgical Pathology*, Vol. 29, No. 2, (Feb), pp. 275-278, ISSN 0147-5185
- Zen, Y.; Kitagawa, S.; Minato, H.; Kurumaya, H.; Katayanagi, K.; Masuda, S.; Niwa, H.; Fujimura, M. & Nakanuma, Y. (2005). IgG4-positive plasma cells in inflammatory pseudotumor (plasma cell granuloma) of the lung. *Human Pathology*, Vol. 36, No. 7, (Jul), pp. 710-717, ISSN 0046-8177



Etiology, Pathogenesis and Pathophysiology of Aortic Aneurysms and Aneurysm Rupture

Edited by Prof. Reinhart Grundmann

ISBN 978-953-307-523-5

Hard cover, 222 pages

Publisher InTech

Published online 27, July, 2011

Published in print edition July, 2011

This book considers mainly etiology, pathogenesis, and pathophysiology of aortic aneurysms (AA) and aneurysm rupture and addresses anyone engaged in treatment and prevention of AA. Multiple factors are implicated in AA pathogenesis, and are outlined here in detail by a team of specialist researchers. Initial pathological events in AA involve recruitment and infiltration of leukocytes into the aortic adventitia and media, which are associated with the production of inflammatory cytokines, chemokine, and reactive oxygen species. AA development is characterized by elastin fragmentation. As the aorta dilates due to loss of elastin and attenuation of the media, the arterial wall thickens as a result of remodeling. Collagen synthesis increases during the early stages of aneurysm formation, suggesting a repair process, but resulting in a less distensible vessel. Proteases identified in excess in AA and other aortic diseases include matrix metalloproteinases (MMPs), cathepsins, chymase and others. The elucidation of these issues will identify new targets for prophylactic and therapeutic intervention.

How to reference

In order to correctly reference this scholarly work, feel free to copy and paste the following:

Hidetoshi Okabe and Mitsuaki Ishida (2011). Immunoglobulin G4-related inflammatory aortic aneurysm, Etiology, Pathogenesis and Pathophysiology of Aortic Aneurysms and Aneurysm Rupture, Prof. Reinhart Grundmann (Ed.), ISBN: 978-953-307-523-5, InTech, Available from:

<http://www.intechopen.com/books/etiology-pathogenesis-and-pathophysiology-of-aortic-aneurysms-and-aneurysm-rupture/immunoglobulin-g4-related-inflammatory-aortic-aneurysm>

INTECH
open science | open minds

InTech Europe

University Campus STeP Ri
Slavka Krautzeka 83/A
51000 Rijeka, Croatia
Phone: +385 (51) 770 447
Fax: +385 (51) 686 166
www.intechopen.com

InTech China

Unit 405, Office Block, Hotel Equatorial Shanghai
No.65, Yan An Road (West), Shanghai, 200040, China
中国上海市延安西路65号上海国际贵都大饭店办公楼405单元
Phone: +86-21-62489820
Fax: +86-21-62489821

© 2011 The Author(s). Licensee IntechOpen. This chapter is distributed under the terms of the [Creative Commons Attribution-NonCommercial-ShareAlike-3.0 License](https://creativecommons.org/licenses/by-nc-sa/3.0/), which permits use, distribution and reproduction for non-commercial purposes, provided the original is properly cited and derivative works building on this content are distributed under the same license.

IntechOpen

IntechOpen