

We are IntechOpen, the world's leading publisher of Open Access books Built by scientists, for scientists

6,900

Open access books available

186,000

International authors and editors

200M

Downloads

Our authors are among the

154

Countries delivered to

TOP 1%

most cited scientists

12.2%

Contributors from top 500 universities



WEB OF SCIENCE™

Selection of our books indexed in the Book Citation Index
in Web of Science™ Core Collection (BKCI)

Interested in publishing with us?
Contact book.department@intechopen.com

Numbers displayed above are based on latest data collected.
For more information visit www.intechopen.com



On Saturated PID Controllers for Industrial Robots: The PA10 Robot Arm as Case of Study

Jorge Orrante-Sakanassi, Víctor Santibáñez and Ricardo Campa
*Instituto Tecnológico de la Laguna
 Mexico*

1. Introduction

Industrial robots are naturally equipped with classical PID controllers, which theoretically assure semi-global asymptotic stability of the closed-loop system equilibrium for the regulation case (see, e.g., Arimoto & Miyazaki (1984), Arimoto et al., (1990), Kelly (1995b), Ortega et al., (1995), Alvarez-Ramirez et al., (2000), Kelly et al., (2005), Meza et al., (2007)). Uniform ultimate boundedness of the closed-loop solutions can be concluded when the desired position is a function of time (some stability analyzes for this case can be found in the works of Kawamura et al. (1988), Wen & Murphy (1990), Qu & Dorsey (1991), Rocco (1996), Cervantes & Alvarez-Ramirez (2001), Choi & Chung (2004), and Camarillo et al., (2008)), but to the authors' knowledge, so far there is not a proof of global regulation for such controller.

In the search of a practical globally stable PID regulator, some nonlinear control structures based on the classical PID controller, which assure global asymptotic stability of the closed-loop system, have emerged. Some works that deal with global nonlinear PID regulators based on Lyapunov theory and passivity theory have been reported by Arimoto (1995), Kelly (1998), Santibáñez & Kelly (1998a), and Meza & Santibáñez (1999). Recently, a particular case of the class of nonlinear PID global regulators originally proposed in (Santibáñez & Kelly, 1998a) was presented by Sun et al., (2009).

On the other hand, it is well known that saturation phenomena in robot control systems are intrinsically present when the actuators are driven by sufficiently large control signals. If these physical constraints are not considered in the controller design they may lead to a lack of the stability properties.

Even though no one of the controllers mentioned above considers the influence of the saturation phenomena, there are some works that have been reported to solve this saturation problem in PD-like controllers for the case of regulation tasks (Kelly & Santibáñez, 1996; Colbaugh et al., 1997a; Loria et al., 1997; Santibáñez & Kelly, 1997; 1998b). Solutions without considering velocity measurements and with gravity compensation are treated in (Loria et al., 1997). A full-state (position and velocity) feedback solution with adaptive gravity compensation is presented in (Zergeroglu et al., 2000). More recently, new schemes dealing with this regulation problem of robot manipulators with bounded inputs have been presented by Zavala & Santibáñez (2006), Zavala & Santibáñez (2007), Dixon (2007), Alvarez-Ramirez et al., (2003), and Alvarez-Ramirez et al., (2008). An adaptive

approach involving task-space coordinates, and considering the uncertainties of the kinematic model of the robot manipulator is proposed in Dixon (2007). Also, for the bounded input tracking case, the following works have appeared in the control literature: Loria & Nijmeijer (1998), Dixon et al., (1999), Santibañez & Kelly (2001), Moreno et al., (2008a), Moreno et al., (2008b), Aguinaga-Ruiz et al., (2009), Zavala-Rio et al., (2010).

Few saturated PID controllers (that is, bounded PID controllers taking into account the actuator torque constraints) have been reported: for the case of semiglobal asymptotic stability, a saturated linear PID controller was presented in (Alvarez-Ramirez et al., 2003) and (Alvarez-Ramirez et al., 2008); for the case of global asymptotic stability, saturated nonlinear PID controllers were introduced in (Gorez, 1999; Meza et al., 2005; Santibañez et al., 2008). The work introduced by Gorez (1999) was the first bounded PID-like controller in assuring global regulation; the latter works, introduced in (Meza et al., 2005) and (Santibañez et al., 2008), also guarantee global regulation, but with the advantage of a controller structure which is simpler than that presented in Gorez (1999). A local adaptive bounded regulator was presented by Laib (2000).

Most of nonlinear PID global regulators for robot manipulators are based on the energy-shaping methodology. There are two approaches: those controllers which do not take into account the effects of actuator saturations, and those which consider the saturation phenomena introduced only by the actuators. However, the actuators are not the only components of the closed-loop system that produce saturation constraints; there exist other devices, such as the servo-drivers and the output electronics of the control computer, presenting saturation effects.

In the practice, industrial robots are equipped with a position control computer which produces the commands of desired joint velocities to the joint actuator servo-drivers. In such a sense, Santibañez et al. (2010) recently proposed a new saturated nonlinear PID regulator for robot manipulators that considers the saturation phenomena of both the control computer, the velocity servo-drivers and the torque constraints of the actuators. The structure of this controller is closer to the structure of the practical PID controllers used in the industry. Fig. 1 shows the scheme that was considered to design such saturated nonlinear PID controller; in this figure the constraints over the input and output commands of the servo driver and the torque constraints of the actuators are clearly shown. Notice that because a cascade connection of two saturation blocks can be reduced to only one saturation function, and for simplicity, the saturation of the velocity PI loop and the saturation of the actuators, are both represented by one saturation block in Fig. 1; also, the driver is assumed to have an ideal inner torque controller. In such a work a proportional outer position loop and a PI inner velocity loop constitute the main structure of the controller, which is intrinsic to the industrial robots if we consider the typical low-level controllers in the actuator servo-drivers.

The contribution of this chapter is twofold: first, we present a variant of the work presented by Santibañez et al. (2010), where now the controller is composed by a saturated velocity proportional (P) inner loop, provided by the servo-driver, and a saturated position proportional-integral (PI) outer loop, supplied by the control computer (see Fig. 2). Such a controller also has a structure that naturally matches that of the practical industrial robots. Secondly, we present an experimental evaluation on the PA10-7C robot arm, comparing the nonlinear PID regulator previously reported in Santibañez et al. (2010) and the controller proposed in this chapter.

By following similar steps as those given in Santibañez et al. (2010) we employ the singular perturbation theory to analyze the exponential stability of the equilibrium of the closed-

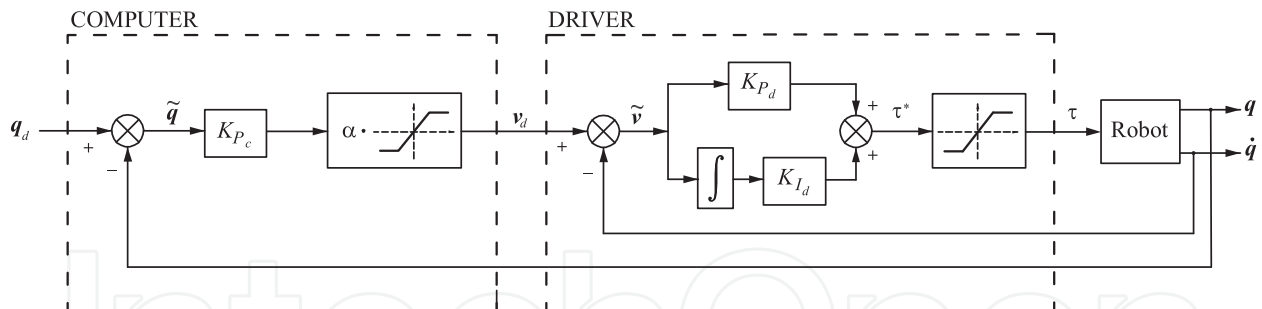


Fig. 1. Practical nonlinear PID controller with bounded torques for robot manipulators.

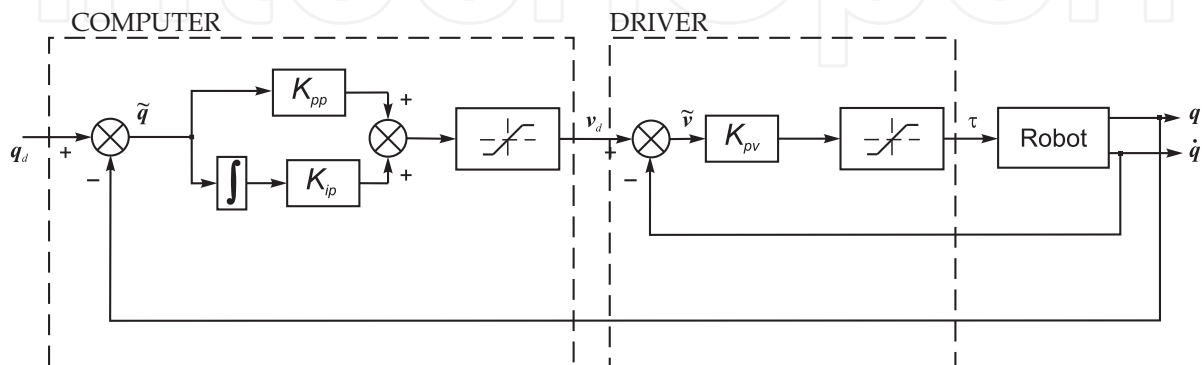


Fig. 2. Variant of the practical PID controller with bounded torques for robot manipulators.

loop system. This result guarantees that exponential stability of the classical PID linear regulator in industrial robots is preserved even though the saturation phenomena due to the electronic devices and/or the actuators are present.

The remainder of this chapter is organized as follows: Section 2 states the dynamic model of a serial n -link rigid robot manipulator in open-loop, some of its properties, as well as some considerations, assumptions and definitions that are useful throughout the analysis. The proposed control scheme is presented in Section 3. Section 4 shows the singularly perturbed system to analyze. Section 5 states the stability analysis and proves that the control objective is achieved. Section 6 is devoted to the real-time experimental evaluation carried out on the PA-10 robot arm. The conclusions of the work are presented in Section 7.

Throughout this chapter, we use the notation $\lambda_{\min}\{A(x)\}$ and $\lambda_{\max}\{A(x)\}$ to indicate the smallest and largest eigenvalues, respectively, of a symmetric positive definite bounded matrix $A(x)$, for any $x \in \mathbb{R}^n$. Also, we define $\lambda_{\min}\{A\}$ as the greatest lower bound (infimum) of $\lambda_{\min}\{A(x)\}$, for all $x \in \mathbb{R}^n$, that is, $\lambda_{\min}\{A\} = \inf_{x \in \mathbb{R}^n} \lambda_{\min}\{A(x)\}$. Similarly, we define $\lambda_{\max}\{A\}$ as the least upper bound (supremum) of $\lambda_{\max}\{A(x)\}$, for all $x \in \mathbb{R}^n$, that is, $\lambda_{\max}\{A\} = \sup_{x \in \mathbb{R}^n} \lambda_{\max}\{A(x)\}$. The norm of vector x is defined as $\|x\| = \sqrt{x^T x}$ and that of matrix $A(x)$ is defined as the corresponding induced norm $\|A(x)\| = \sqrt{\lambda_{\max}\{A(x)^T A(x)\}}$.

2. Preliminaries

2.1 Robot dynamics

The dynamics of a serial n -link rigid robot, without the effect of friction, can be written as (Spong & Vidyasagar, 1989):

$$M(q)\ddot{q} + C(q, \dot{q})\dot{q} + g(q) = \tau \quad (1)$$

where $q, \dot{q}, \ddot{q} \in \mathbb{R}^n$ are the vectors of joint positions, velocities and accelerations, respectively, $\tau \in \mathbb{R}^n$ is the vector of applied torques, $M(q) \in \mathbb{R}^{n \times n}$ is the symmetric positive-definite inertia matrix, $C(q, \dot{q}) \in \mathbb{R}^{n \times n}$ is the matrix of centripetal and Coriolis torques, and $g(q) \in \mathbb{R}^n$ is the vector of gravitational torques obtained as the gradient of the robot potential energy $\mathcal{U}(q)$, i.e.

$$g(q) = \frac{\partial \mathcal{U}(q)}{\partial q}. \quad (2)$$

We assume that all the joints of the robot are of the revolute type.

2.2 Properties of the robot dynamics

We recall two important properties of dynamics (1) which are useful in our paper:

Property 1. The matrix $C(q, \dot{q})$ and the time derivative $\dot{M}(q)$ of the inertia matrix satisfy (Koditschek, 1984; Ortega & Spong, 1989):

$$\dot{q}^T \left[\frac{1}{2} \dot{M}(q) - C(q, \dot{q}) \right] \dot{q} = 0 \quad \forall \quad q, \dot{q} \in \mathbb{R}^n.$$

◇

Property 2. The gravitational torque vector $g(q)$ is bounded for all $q \in \mathbb{R}^n$. This means that there exist finite constants $\gamma_i \geq 0$ such that (Craig, 1998):

$$\sup_{q \in \mathbb{R}^n} |g_i(q)| \leq \gamma_i \quad i = 1, 2, \dots, n, \quad (3)$$

where $g_i(q)$ stands for the i -th element of $g(q)$. Equivalently, there exists a constant k' such that $\|g(q)\| \leq k'$, for all $q \in \mathbb{R}^n$. Furthermore, there exists a positive constant k_g such that

$$\left\| \frac{\partial g(q)}{\partial q} \right\| \leq k_g,$$

for all $q \in \mathbb{R}^n$, and $\|g(x) - g(y)\| \leq k_g \|x - y\|$, for all $x, y \in \mathbb{R}^n$. Moreover, a simple way to compute k_g is:

$$k_g \geq n \left(\max_{i,j,q} \left| \frac{\partial g_i(q)}{\partial q_j} \right| \right) \quad \text{where } i = 1, 2, \dots, n \text{ and } j = 1, 2, \dots, n. \quad (4)$$

A less restrictive constant k_{g_i} can be computed by:

$$k_{g_i} \geq n \left(\max_{j,q} \left| \frac{\partial g_i(q)}{\partial q_j} \right| \right) \quad \text{where } i = 1, 2, \dots, n \text{ and } j = 1, 2, \dots, n. \quad (5)$$

◇

2.3 Useful theorems

Here, we recall two versions of the Mean-Value Theorem, which are key in finding the less restrictive constants k_{g_i} related with the gravitational torque vector.

Theorem 1. [Kelly et al., (2005), p. 384] Consider the continuous function $f: \mathbb{R}^n \rightarrow \mathbb{R}$. If $f(z_1, z_2, \dots, z_n)$ has continuous partial derivatives then, for any constant vectors $x, y \in \mathbb{R}^n$, we have

$$f(x) - f(y) = \begin{bmatrix} \left. \frac{\partial f(z)}{\partial z_1} \right|_{z=\xi} \\ \left. \frac{\partial f(z)}{\partial z_2} \right|_{z=\xi} \\ \vdots \\ \left. \frac{\partial f(z)}{\partial z_n} \right|_{z=\xi} \end{bmatrix}^T [x - y] \quad (6)$$

where $\xi \in \mathbb{R}^n$ is a vector suitably chosen on the line segment which joins vectors x and y . \diamond

Theorem 2. [Kelly et al. (2005), p.385] Consider the continuous vectorial function $f: \mathbb{R}^n \rightarrow \mathbb{R}^m$. If $f_i(z_1, z_2, \dots, z_n)$ has continuous partial derivatives for $i = 1, \dots, m$, then, for each pair of vectors $x, y \in \mathbb{R}^n$ and each $\omega \in \mathbb{R}^m$ there exists $\xi \in \mathbb{R}^n$ such that:

$$[f(x) - f(y)]^T \omega = \omega^T \left. \frac{\partial f(z)}{\partial z} \right|_{z=\xi} (x - y), \quad (7)$$

where $\xi \in \mathbb{R}^n$ is a vector on the line segment that joins vectors x and y . \diamond

2.4 Problem formulation

Before presenting the formulation of the control problem, we recall some useful definitions.

Definition 1. The hard saturation function is denoted by $\text{sat}(x; k) \in \mathbb{R}^n$, where

$$\text{sat}(x; k) = \begin{bmatrix} \text{sat}(x_1; k_1) \\ \text{sat}(x_2; k_2) \\ \vdots \\ \text{sat}(x_n; k_n) \end{bmatrix}, \quad x = \begin{bmatrix} x_1 \\ x_2 \\ \vdots \\ x_n \end{bmatrix}, \quad k = \begin{bmatrix} k_1 \\ k_2 \\ \vdots \\ k_n \end{bmatrix},$$

with k_i being the i -th saturation limit, $i = 1, 2, \dots, n$, and each element of $\text{sat}(x; k)$ is defined as:

$$\text{sat}(x_i; k_i) = \begin{cases} x_i & \text{if } |x_i| \leq k_i \\ k_i & \text{if } x_i > k_i \\ -k_i & \text{if } x_i < -k_i \end{cases}$$

\diamond

Furthermore, the control scheme proposed in this chapter involves special saturation functions which fit in the following definition.

Definition 2. [Zavala & Santibañez (2006)] Given positive constants l and m , with $l < m$, a function $\text{Sat}(x; l, m) : \mathbb{R} \rightarrow \mathbb{R} : x \mapsto \text{Sat}(x; l, m)$ is said to be a strictly increasing linear saturation function for (l, m) if it is locally Lipschitz, strictly increasing, C^2 differentiable and satisfies:

1. $\text{Sat}(x; l, m) = x$ when $|x| \leq l$
2. $|\text{Sat}(x; l, m)| < m$ for all $x \in \mathbb{R}$. \diamond

For instance, the following saturation function is a special case of the linear saturation given in Definition 2:

$$\text{Sat}(x; l, m) = \begin{cases} -l + (m-l) \tanh\left(\frac{x+l}{m-l}\right) & \text{if } x < -l \\ x & \text{if } |x| \leq l \\ l + (m-l) \tanh\left(\frac{x-l}{m-l}\right) & \text{if } x > l \end{cases} \quad (8)$$

n saturation functions of the form (8) can be joined together in an $n \times 1$ saturation function vector denoted by $\mathbf{Sat}(x; l, m)$, i.e.,

$$\mathbf{Sat}(x; l, m) = \begin{bmatrix} \text{Sat}(x_1; l_1, m_1) \\ \text{Sat}(x_2; l_2, m_2) \\ \vdots \\ \text{Sat}(x_n; l_n, m_n) \end{bmatrix},$$

where $x, l, m \in \mathbb{R}^n$, that is,

$$x = \begin{bmatrix} x_1 \\ x_2 \\ \vdots \\ x_n \end{bmatrix}, \quad l = \begin{bmatrix} l_1 \\ l_2 \\ \vdots \\ l_n \end{bmatrix}, \quad m = \begin{bmatrix} m_1 \\ m_2 \\ \vdots \\ m_n \end{bmatrix}.$$

Consider the robot dynamic model (1). Assume that each joint actuator is able to supply a known maximum torque τ_i^{\max} so that:

$$|\tau_i| \leq \tau_i^{\max}, \quad i = 1, 2, \dots, n \quad (9)$$

where τ_i stands for the i -th entry of vector τ . In other words, if u_i represents the control signal (controller output) before the actuator, related to the i -th joint, then

$$\tau_i = \tau_i^{\max} \text{sat}\left(\frac{u_i}{\tau_i^{\max}}\right), \quad (10)$$

for $i = 1, \dots, n$, where $\text{sat}(\cdot)$ is the standard hard saturation function. We also assume:

Assumption 1. The maximum torque τ_i^{\max} of each actuator satisfies the following condition:

$$\tau_i^{\max} > \gamma_i, \quad (11)$$

where γ_i was defined in Property 2, with $i = 1, 2, \dots, n$. \diamond

This assumption means that the robot actuators are able to supply torques in order to hold the robot at rest for all desired joint positions $q_d \in \mathbb{R}^n$.

The control problem is to design a controller to compute the torque $\tau \in \mathbb{R}^n$ applied to the joints, satisfying the constraints (9), such that the robot joint positions q tend asymptotically toward the constant desired joint positions q_d .

3. Proposed control scheme

In this section we present a nonlinear PID controller which can be seen as a practical version of the classical PID control of robot manipulators.

The proposed nonlinear PID controller has the form:

$$\tau = \text{Sat}[K_{pv}[\text{Sat}(K_{pp}\tilde{q} + w^*; l_{pi}^*, m_{pi}^*) - \dot{q}]; l_p, m_p] \quad (12)$$

$$w^* = K_{ip} \int_0^t \tilde{q} \, dr \quad (13)$$

where K_{pv} , K_{pp} and K_{ip} are diagonal positive definite matrices. This control law is formed by two loops: an outer joint-position proportional-integral PI loop and an inner joint-velocity proportional P loop, and considers the saturation effects existing in the output of the control stage (see Figure 2), where $\text{Sat}[K_{pv}[\text{Sat}(K_{pp}\tilde{q} + w^*; l_{pi}^*, m_{pi}^*) - \dot{q}]; l_p, m_p]$ is a vector where each element is a saturation function as in Definition 2 for some (l_p, m_p) , where l_p and m_p are vectors with elements l_{pi} and m_{pi} , respectively, and $i = 1, 2, \dots, n$. The control law (12) can be rewritten as:

$$\tau = \text{Sat}[\text{Sat}(K_p\tilde{q} + w; l_{pi}, m_{pi}) - K_v\dot{q}; l_p, m_p] \quad (14)$$

$$w = K_i \int_0^t \tilde{q} \, dr \quad (15)$$

where

$$K_p = K_{pv}K_{pp}, K_i = K_{pv}K_{ip}, K_v = K_{pv}, l_{pi} = K_{pv}l_{pi}^*, m_{pi} = K_{pv}m_{pi}^*$$

and the following assumption is satisfied.

Assumption 2: The saturation limits of the PI and P loops satisfy:

$$\gamma_i < l_{pi} < m_{pi} \quad (16)$$

$$\gamma_i < l_{pi} < m_{pi} < \tau_i^{\max}. \quad (17)$$

\diamond

Remark: In practice, the saturation constraints of the electronic devices and the actuators are, in fact, hard saturations like those in Definition 1. However, with the end of carrying out the stability analysis, they can be approximated by linear saturation functions like those defined in Definition 2, with $l < m$, and l arbitrarily close to m .

In order to simplify the notation, henceforth, we will omit, in the argument, the limits of the saturation functions.

4. Singularly perturbed system

4.1 Closed-loop system

By substituting (14) into the robot dynamics (1), we obtain

$$\frac{d}{dt} \begin{bmatrix} \tilde{q} \\ \dot{q} \\ w \end{bmatrix} = \begin{bmatrix} -\dot{q} \\ M(q)^{-1} [\text{Sat}[\text{Sat}(K_p \tilde{q} + w) - K_v \dot{q}] - C(q, \dot{q}) \dot{q} - g(q)] \\ K_i \tilde{q} \end{bmatrix} \quad (18)$$

which is an autonomous differential equation with a unique equilibrium point given by $[\tilde{q}^T \dot{q}^T w^T]^T = [0^T 0^T g(q_d)^T]^T \in \mathbb{R}^{3n}$, where we have used Assumption 2, and (3), to get that $\text{Sat}(\text{Sat}(w)) - g(q_d) = 0$ implies $w = g(q_d)$. In order to move the equilibrium point of (18) to the origin, we apply the change of variables $x = w - g(q_d)$. Now the new closed-loop system is given by:

$$\frac{d}{dt} \begin{bmatrix} \tilde{q} \\ \dot{q} \\ x \end{bmatrix} = \begin{bmatrix} -\dot{q} \\ M(q)^{-1} [\text{Sat}[\text{Sat}(K_p \tilde{q} + x + g(q_d)) - K_v \dot{q}] - C(q, \dot{q}) \dot{q} - g(q)] \\ K_i \tilde{q} \end{bmatrix}. \quad (19)$$

The previous closed-loop system can be studied as a singularly perturbed system. To this end, system (19) can be described as two first-order differential equations as follows:

$$\frac{d}{dt} x = K_i \tilde{q} \quad (20)$$

$$\frac{d}{dt} \begin{bmatrix} \tilde{q} \\ \dot{q} \end{bmatrix} = \begin{bmatrix} -\dot{q} \\ M(q)^{-1} [\text{Sat}[\text{Sat}(K_p \tilde{q} + x + g(q_d)) - K_v \dot{q}] - C(q, \dot{q}) \dot{q} - g(q)] \end{bmatrix}. \quad (21)$$

Moreover, by choosing the integral gain matrix as $K_i = \varepsilon K_i^*$, where K_i^* is a diagonal positive-definite matrix and $\varepsilon > 0$ is a small parameter, and letting $t' = \varepsilon t$ be a new time-scale (t' is a slow time compared to t), we can rewrite (20)–(21) as

$$\frac{d}{dt'} x = K_i^* \tilde{q} \quad (22)$$

$$\varepsilon \frac{d}{dt'} \begin{bmatrix} \tilde{q} \\ \dot{q} \end{bmatrix} = \begin{bmatrix} -\dot{q} \\ M(q)^{-1} [\text{Sat}[\text{Sat}(K_p \tilde{q} + x + g(q_d)) - K_v \dot{q}] - C(q, \dot{q}) \dot{q} - g(q)] \end{bmatrix} \quad (23)$$

where, in the forthcoming analysis, and in accordance with the singular perturbation theory, x in (23) will be treated as a fixed parameter, due to its slow variation.

4.2 Equilibrium points

For each fixed x representing the frozen variable as a fixed parameter in (23), the equilibrium points are the solutions of the nonlinear system:

$$\dot{q} = 0, \quad (24)$$

$$\text{Sat}[\text{Sat}[K_p \tilde{q} + x + g(q_d)] - g(q)] = 0. \quad (25)$$

According to Definition 2 and Assumption 2, (25) can be written as:

$$K_p \tilde{q} + x + g(q_d) - g(q) = 0. \quad (26)$$

Now, the Contraction Mapping Theorem (Kelly et al., 2005; Khalil, 2002), guarantees that (26) has a unique solution $\tilde{q} = h_1(x) \in \mathbb{R}^n$ provided that

$$k_{p_i} > k_{g_i} \quad (27)$$

is satisfied (see Appendix A).

Then we have that, for each $x \in \mathbb{R}^n$, the unique equilibrium point of (23) is:

$$\begin{bmatrix} \tilde{q} \\ \dot{q} \end{bmatrix} = \begin{bmatrix} h_1(x) \\ 0 \end{bmatrix} = h(x) \in \mathbb{R}^{2n}. \quad (28)$$

Consequently, we have that:

$$x = h^{-1}(\tilde{q}) = -K_p \tilde{q} - g(q_d) + g(q) \quad (29)$$

which we will use later on.

4.3 Overall singularly perturbed system

In order to proceed with the stability analysis, we shift the equilibrium point of (23) to the origin. To this end, we make the following change of variables:

$$\begin{bmatrix} y_1(t') \\ y_2(t') \end{bmatrix} = \begin{bmatrix} \tilde{q}(t') - h_1(x) \\ \dot{q}(t') \end{bmatrix} \quad (30)$$

which implies that $\tilde{q} = y_1 + h_1(x)$. Then, (22)–(23) can be now represented by the new variables as a singularly perturbed system given by

$$\frac{d}{dt'}x = K_i^*[y_1 + h_1(x)] \quad (31)$$

$$\varepsilon \frac{d}{dt'} \begin{bmatrix} y_1 \\ y_2 \end{bmatrix} = \begin{bmatrix} -y_2 - \varepsilon \left[\frac{\partial h_1(x)}{\partial x} \right] K_i^*[y_1 + h_1(x)] \\ M(q_d - y_1 - h_1(x))^{-1} [\text{Sat}[\text{Sat}[K_p(y_1 - h_1(x)) + x + g(q_d)] - K_v y_2] \\ - C(q_d - y_1 - h_1(x), y_2) y_2 - g(q_d - y_1 - h_1(x))] \end{bmatrix}. \quad (32)$$

5. Stability analysis

According to the theory of singularly perturbed systems (Khalil, 2002), the origin of (22)–(23) is asymptotically stable if and only if the origin of (31)–(32) is asymptotically stable. It is important to remember that x is a fixed parameter in (23) and (32), this is because t' and x are varying slowly since, in the t time scale, they are given by (Khalil, 2002):

$$t' = t_0 + \varepsilon t, \quad x = x(t_0 + \varepsilon t), \quad (33)$$

being t_0 the initial time. The setting of $\varepsilon = 0$ freezes these variables at $t' = t_0$ and $x = x(t_0)$ (initial conditions).

By simplicity, we divide the stability analysis in two parts:

- First, we will prove asymptotic stability and local exponential stability of the origin of a saturated PD controller with desired gravity compensation plus a constant vector x , which can be seen as a constant control input.
- Second, based on a theorem of singularly perturbed systems, we will prove that the origin of (22)–(23) is locally exponentially stable.

5.1 Stability analysis of a Saturated PD Controller with Desired Gravity Compensation plus a constant vector x

The control law that describes the proposed Saturated PD Controller with Desired Gravity Compensation plus a constant vector x is given by:

$$\tau = \text{Sat}[\text{Sat}(K_p \tilde{q} + x + g(q_d)) - K_v \dot{q}]. \quad (34)$$

By substituting (34) into the robot dynamics (1), we obtain

$$\frac{d}{dt} \begin{bmatrix} \tilde{q} \\ \dot{q} \end{bmatrix} = \begin{bmatrix} -\dot{q} \\ M(q)^{-1} [\text{Sat}[\text{Sat}(K_p \tilde{q} + x + g(q_d)) - K_v \dot{q}] - C(q, \dot{q}) \dot{q} - g(q)] \end{bmatrix} \quad (35)$$

whose equilibrium points are the solutions of the nonlinear equations (24)–(25) and they have already been proven to have a unique solution $\begin{bmatrix} \tilde{q}^T & \dot{q}^T \end{bmatrix}^T = \begin{bmatrix} h_1(x)^T & 0^T \end{bmatrix}^T$, provided that $k_{p_i} > k_{g_i}$ is satisfied.

5.1.1 Asymptotic stability analysis

To carry out the stability analysis of the equilibrium of (35), we propose the following Lyapunov function candidate, which is inspired from one in (Alvarez-Ramirez et al., 2008):

$$W(\tilde{q}, \dot{q}) = \frac{1}{2} \dot{q}^T M(q) \dot{q} + W_1(\tilde{q}) \quad (36)$$

where

$$W_1(\tilde{q}) = \sum_{i=1}^n \int_0^{\tilde{q}_i} \text{Sat}[\text{Sat}(k_{p_i} r_i + x_i + g_i(q_d))] dr_i + \mathcal{U}(q_d - \tilde{q}) - \sum_{i=1}^n \int_0^{h_1(x)} \text{Sat}[\text{Sat}(k_{p_i} r_i + x_i + g_i(q_d))] dr_i - \mathcal{U}(q_d - h_1(x)).$$

By following similar steps to those given by Zavala & Santibañez (2007) (see Appendix B) we prove that (36) is a positive definite and radially unbounded function, provided that $k_{p_i} > k_{g_i}$. The time derivative of $W(\tilde{q}, \dot{q})$ along the trajectories of (35), and after some algebraic simplifications, results in:

$$\dot{W}(\tilde{q}, \dot{q}) = \dot{q}^T \text{Sat}[\text{Sat}(K_p \tilde{q} + x + g(q_d)) - K_v \dot{q}] - \dot{q}^T \text{Sat}[\text{Sat}(K_p \tilde{q} + x + g(q_d))]. \quad (37)$$

Finally, by using the following property of linear saturation functions (Santibañez et al., 2010):

$$\dot{q}_i [\text{Sat}(z_i - \dot{q}_i) - \text{Sat}(z_i)] \leq -|\text{Sat}(z_i - \dot{q}_i) - \text{Sat}(z_i)|^2$$

we have that $\dot{W}(\tilde{q}, \dot{q})$ is upper bounded by:

$$\dot{W}(\tilde{q}, \dot{q}) \leq -\|\text{Sat}[\text{Sat}(K_p \tilde{q} + x + g(q_d)) - K_v \dot{q}] - \text{Sat}[\text{Sat}(K_p \tilde{q} + x + g(q_d))]\|^2 \leq 0.$$

Thus $\dot{W}(\tilde{q}, \dot{q})$ is a negative semidefinite function and we can conclude stability of the equilibrium point $\begin{bmatrix} \tilde{q}^T & \dot{q}^T \end{bmatrix}^T = \begin{bmatrix} h_1(x)^T & 0^T \end{bmatrix}^T \in \mathbb{R}^{2n}$ of (35). We can use the LaSalle's Invariance Principle (Kelly et al., 2005) to conclude that the equilibrium point is, in fact, globally asymptotically stable. To this end, let us define Ω as:

$$\Omega = \{\tilde{q}, \dot{q} \in \mathbb{R}^n: \dot{W}(\tilde{q}, \dot{q}) = 0\} = \{\dot{q} = 0, \tilde{q} \in \mathbb{R}^n\}.$$

Notice that, from (35),

$$\dot{q}(t) \equiv 0 \Rightarrow \ddot{q}(t) \equiv 0 \Rightarrow \text{Sat}[\text{Sat}(K_p \tilde{q} + x + g(q_d))] - g(q_d - \tilde{q}) \equiv 0.$$

Furthermore, under the assumption (27) we can assure that

$$\text{Sat}[\text{Sat}(K_p \tilde{q} + x + g(q_d))] - g(q_d - \tilde{q}) \equiv 0 \Rightarrow \tilde{q} \equiv h_1(x).$$

Therefore, from LaSalle's Invariance Principle we conclude that the equilibrium point

$\begin{bmatrix} \tilde{q}^T & \dot{q}^T \end{bmatrix}^T = \begin{bmatrix} h_1(x)^T & 0^T \end{bmatrix}^T \in \mathbb{R}^{2n}$ of (35) is globally asymptotically stable.

5.1.2 Local exponential stability analysis

Before proceeding with the stability analysis of this section, we recall a useful existing lemma presented in (Kelly, 1995a).

Lemma1. Consider the nonlinear system:

$$\dot{y} = A(y)y + B(y)f(y), \quad (38)$$

where $y \in \mathbb{R}^m$, $A(y)$ and $B(y)$ are $m \times m$ nonlinear functions of y , and $f(y)$ is a $m \times 1$ nonlinear function of y . Assume that $f(0) = 0$; hence, $y = 0 \in \mathbb{R}^m$ is an equilibrium point of the system (38). Then, the linearized system of (38) around the equilibrium $y = 0$ is given by:

$$\dot{y} = \left[A(0) + B(0) \frac{\partial f(0)}{\partial y} \right] y. \quad (39)$$

◇

In order to prove that the equilibrium point of the closed-loop system (35) is locally exponentially stable, we consider a local linearization of the closed-loop system around the equilibrium point $\begin{bmatrix} \tilde{q}^T & \dot{q}^T \end{bmatrix}^T = \begin{bmatrix} h_1(x)^T & 0^T \end{bmatrix}^T \in \mathbb{R}^{2n}$ (Khalil, 2002). In the neighborhood of this equilibrium point, the closed-loop system (35) can be represented by:

$$M(q)\ddot{q} + C(q, \dot{q})\dot{q} + g(q) - K_p \tilde{q} + K_v \dot{q} - \dot{x} - g(q_d) = 0. \quad (40)$$

A local change of variables $y_1 = \tilde{q} - h_1(x)$, and $y_2 = \dot{q}$ leads to:

$$\begin{aligned} & M(q_d - y_1 - h_1(x)) \dot{y}_2 + C(q_d - y_1 - h_1(x), y_2) y_2 \\ & + g(q_d - y_1 - h_1(x)) - K_p[y_1 + h_1(x)] + K_v y_2 - \dot{x} - g(q_d) = 0 \end{aligned}$$

whose unique equilibrium is the origin, provided that (27) is satisfied. The previous equation can be written as:

$$\dot{y} = A(y)y + B(y)f(y). \quad (41)$$

where,

$$\begin{aligned} \dot{y} &= \frac{d}{dt} \begin{bmatrix} y_1 \\ y_2 \end{bmatrix} \\ A(y) &= \begin{bmatrix} 0 & -I \\ 0 & -M(q_d - y_1 - h_1(x))^{-1} [K_v + C(q_d - y_1 - h_1(x), y_2)] \end{bmatrix} \\ B(y) &= \begin{bmatrix} 0 & 0 \\ 0 & M(q_d - y_1 - h_1(x))^{-1} \end{bmatrix} \end{aligned}$$

$$f(y) = \begin{bmatrix} 0 \\ K_p[y_1 + h_1(x)] + x + g(q_d) - g(q_d - y_1 - h_1(x)) \end{bmatrix}.$$

According to Lemma 1, the linearized system from (41), around the equilibrium $y = 0$, has the form (39), with:

$$\begin{aligned} A(0) &= \begin{bmatrix} 0 & -I \\ 0 & -M(q_d - h_1(x))^{-1}K_v \end{bmatrix} \\ B(0) &= \begin{bmatrix} 0 & 0 \\ 0 & M(q_d - h_1(x))^{-1} \end{bmatrix} \\ \frac{\partial f(0)}{\partial y} &= \begin{bmatrix} 0 & 0 \\ K^* & 0 \end{bmatrix} \end{aligned}$$

which can be compacted in:

$$\frac{d}{dt} \begin{bmatrix} y_1 \\ y_2 \end{bmatrix} = \underbrace{\begin{bmatrix} 0 & -I \\ M(q_d - h_1(x))^{-1}K^* & -M(q_d - h_1(x))^{-1}K_v \end{bmatrix}}_J \begin{bmatrix} y_1 \\ y_2 \end{bmatrix} \quad (42)$$

where K^* is given by:

$$K^* = K_p - \frac{\partial g(q_d - y_1 - h_1(x))}{\partial y_1}.$$

Notice that if (27) is satisfied then K^* is a positive definite matrix (Hernandez-Guzman et al., 2008). To analyze the stability of the origin of (42), we propose the Lyapunov function candidate:

$$W_L(y_1, y_2) = \frac{1}{2} y_2^T M(q_d - h_1(x)) y_2 + \frac{1}{2} y_1^T K^* y_1 \quad (43)$$

which is a positive definite function. The time derivative along the trajectories of (42) is:

$$\begin{aligned} \dot{W}(y_1, y_2) &= y_2^T M(q_d - h_1(x)) \dot{y}_2 + y_1^T K^* \dot{y}_1 \\ &= y_2^T [K^* y_1 - K_v y_2] - y_1^T K^* y_2 = -y_2^T K_v y_2 \end{aligned}$$

which is a negative semidefinite function. By using the LaSalle's Invariance Principle we can conclude global asymptotic stability of the closed-loop system (42). To this end, let us define Ω as:

$$\Omega = \{y_1, y_2 \in \mathbb{R}^n : \dot{W}(y_1, y_2) = 0\} = \{y_2 = 0, y_1 \in \mathbb{R}^n\}. \quad (44)$$

Notice that, from (42):

$$y_2(t) \equiv 0 \Rightarrow \dot{y}_2(t) \equiv 0 \Rightarrow M(q_d - h_1(x))^{-1} K^* y_1 \equiv 0. \quad (45)$$

Furthermore, under assumption (27) we can assure that

$$M(q_d - h_1(x))^{-1} K^* y_1 = 0 \Rightarrow y_1 = 0.$$

Therefore, from LaSalle's Invariance Principle we conclude that the origin of the linear system (42) is globally asymptotically stable. This implies that the eigenvalues of J in (42) are located in the left-hand side of the complex plane (see Theorem 4.5 in Khalil (2002)), and hence, the origin of the linear system (42) is exponentially stable (see e.g. Theorem 4.11 in Khalil (2002) that shows that, for linear systems, uniform asymptotic stability of the origin is equivalent to exponential stability). According to this, exponential stability of the origin for the linear system (42) implies the local exponential stability of the origin for the nonlinear system (41) (see e.g. Theorem 4.13 in Khalil (2002)).

Finally, we can conclude that the equilibrium point of the nonlinear system (35) is locally exponentially stable. So we have proven the following:

Proposition 1. Under Assumption 2, and (27), the control law (34) guarantees global asymptotic stability and local exponential stability of the closed-loop system (35) with

$$|\tau_i(t)| \leq \tau_i^{\max} \text{ for all } i = 1, 2, \dots, n \text{ and } t \geq 0.$$

5.2 Stability analysis of the singularly perturbed system.

To prove the exponential stability of the origin of (22)–(23), we recall an existing theorem:

Theorem 3 (Khalil, 2002): Consider the singularly perturbed system

$$\dot{x} = f(t', x, z, \varepsilon) \quad (46)$$

$$\varepsilon \dot{z} = g(t', x, z, \varepsilon). \quad (47)$$

Assume that the following are satisfied for all $(t', x, \varepsilon) \in [0, \infty) \times B_r \times [0, \varepsilon]$, with $B_r = \{x \in \mathbb{R}^n : \|x\| \leq r\}$:

- $f(t', 0, 0, \varepsilon) = 0$ and $g(t', 0, 0, \varepsilon) = 0$.
- The equation $0 = g(t', x, z, 0)$ has an isolated root $z = h(t', x)$ such that $h(t', 0) = 0$.
- The functions f , g , h and their partial derivatives up to the second order are bounded for $z - h(t', x) \in B_\rho$ with $B_\rho = \{y \in \mathbb{R}^{2n} : \|y\| \leq \rho\}$.
- The origin of the reduced system

$$\dot{x} = f(t', x, h(t', x), 0) \quad (48)$$

is exponentially stable.

- The origin of the boundary-layer system

$$\frac{dy}{dt} = g(t', x, y + h(t', x), 0) \quad (49)$$

is exponentially stable, uniformly in (t', x) .

Then, there exists $\varepsilon^* > 0$ such that, for all $\varepsilon < \varepsilon^*$, the origin of (46)–(47) is exponentially stable. \diamond

We are now ready to present our main contribution.

Proposition 2. Consider the robot dynamics (1) in closed-loop with the practical saturated PID control law (12). Under Assumption 2, and (27), the origin of the closed-loop system

(22)–(23) is locally exponentially stable, and therefore, the equilibrium point of (18) is locally exponentially stable. Besides $|\tau_i(t)| \leq \tau_i^{\max}$ for all $i = 1, 2, \dots, n$ and $t \geq 0$. \diamond

Proof. Notice that (46)–(47) correspond to (22)–(23), respectively, with

$$\begin{aligned} f(t', x, z, \varepsilon) &= K_i^* \tilde{q} \\ g(t', x, z, \varepsilon) &= \begin{bmatrix} -\dot{q} \\ M(q)^{-1} [\text{Sat}[\text{Sat}(K_p \tilde{q} + x + g(q_d)) - K_v \dot{q}] - C(q, \dot{q}) \dot{q} - g(q)] \end{bmatrix} \\ z &= \begin{bmatrix} \tilde{q} \\ \dot{q} \end{bmatrix} \in \mathbb{R}^{2n}. \end{aligned}$$

In order to complete the stability analysis, we are going to check each item of the Theorem 3.

- By substituting $x = \tilde{q} = \dot{q} = 0$ in (22)–(23), it is straightforward to verify this assumption.
- This item is easily fulfilled by noting that the root of $g(t', x, z, \varepsilon)$ has been obtained in Section 4.2, where it was proven that, for each $x \in \mathbb{R}^n$, the unique root of (23) is $z = h(x) = [h_1(x)^T 0^T]^T \in \mathbb{R}^{2n}$, provided that (27) is satisfied. On the other hand, we know from (28) that $\tilde{q} = h_1(x)$, and therefore, when $x = 0$ we have that $\tilde{q} = h_1(0)$; then, from (29), $0 = h_1^{-1}(\tilde{q}) = -[K_p K_{pc} \tilde{q} + g(q_d) - g(q_d - \tilde{q})]$ which under assumption (27) has a unique solution $\tilde{q} = 0$. Hence, $h(0) = [h_1(0)^T 0^T]^T = [0^T 0^T]^T$ and assumption b) is verified.
- This is straightforward given that the right-hand side of (22)–(23) is C^2 .
- By substituting the isolated root $z = h(x)$ and $\varepsilon = 0$ in (22), that is $\tilde{q} = h_1(x)$ and $\dot{q} = 0$, we obtain the so-called reduced system, which is given by:

$$\frac{d}{dt'} x = K_i^* h_1(x) \quad (50)$$

whose unique equilibrium point results from $h_1(x) = 0$ and is given by $x = h_1^{-1}(0) = 0$ provided that (27) is satisfied. Comparing the reduced system (50) with the terms used in Theorem 3, we have $\dot{x} = f(t', x, h(t', x), 0) = K_i^* h_1(x)$.

On the other hand, to analyze the origin of the reduced system (50), let us define the quadratic Lyapunov function candidate

$$V(x) = \frac{1}{2} x^T (K_i^*)^{-1} x \quad (51)$$

which satisfies

$$\frac{1}{2} \lambda_{\max}\{(K_i^*)^{-1}\} \|x\|^2 \geq V(x) \geq \frac{1}{2} \lambda_{\min}\{(K_i^*)^{-1}\} \|x\|^2 \quad (52)$$

and hence, it is a positive definite and radially unbounded function. The time derivative along the trajectories of (50) is given by:

$$\dot{V}(x) = x^T (K_i^*)^{-1} \dot{x} = x^T h_1(x). \quad (53)$$

Consider (29) with $\tilde{q} = h_1(x)$:

$$\dot{x} = -K_p h(x) - g(q_d) + g(q_d - h(x)), \quad (54)$$

substituting in (53) we have

$$\begin{aligned} h_1^T \dot{x} &= h_1(x)^T [-K_p h(x) - g(q_d) + g(q_d - h(x))] \\ &= -h_1(x)^T K_p h_1(x) + h_1(x)^T [-g(q_d) + g(q_d - h_1(x))] \\ &\leq -h_1(x)^T \left[K_p + \frac{\partial g(z)}{\partial z} \Big|_{z=\xi} \right] h_1(x) \end{aligned}$$

where we use Theorem 2, and

$$K_p + \frac{\partial g(z)}{\partial z} \Big|_{z=\xi} \quad (55)$$

is a positive definite matrix provided that

$$k_{p_i} > \sum_{j=1}^n \max_q \left| \frac{\partial g_i(q)}{\partial q_j} \right| \quad \text{for } i = 1, \dots, n. \quad (56)$$

is satisfied (Hernandez-Guzman et al., 2008).

Note that (27) implies (56). Therefore

$$\dot{V}(x) \leq -h_1(x)^T \left[K_p + \frac{\partial g(z)}{\partial z} \Big|_{z=\xi} \right] h_1(x) \leq -\lambda_{\min} \left\{ K_p + \frac{\partial g(z)}{\partial z} \Big|_{z=\xi} \right\} \|h_1(x)\|^2 \quad (57)$$

Notice that, due to $h_1(0) = 0$, the time derivative (53) is a negative definite function and we can conclude global asymptotic stability of the origin of (50).

Moreover, we have that:

$$\begin{aligned} \|x\|^2 &= x^T x \\ &= [-K_p h_1(x) - g(q_d) + g(q_d - h_1(x))]^T [-K_p h_1(x) - g(q_d) + g(q_d - h_1(x))] \\ &= h_1(x)^T K_p^2 h_1(x) + 2h_1(x)^T K_p [-g(q_d) + g(q_d - h_1(x))] \\ &\quad + [-g(q_d) + g(q_d - h_1(x))]^T [-g(q_d) + g(q_d - h_1(x))] \\ &\leq [\lambda_{\max}\{K_p\}^2 + 2k_g \lambda_{\max}\{K_p\} + k_g^2] \|h_1(x)\|^2 \\ &= [\lambda_{\max}\{K_p\} + k_g]^2 \|h_1(x)\|^2. \end{aligned}$$

Then

$$\|h_1(x)\|^2 \geq \frac{1}{[\lambda_{\max}\{K_p\} + k_g]^2} \|x\|^2, \quad (58)$$

and we have that

$$\dot{V}(x) \leq \frac{-\lambda_{\min} \left\{ K_p + \frac{\partial g(z)}{\partial z} \Big|_{z=\xi} \right\}}{[\lambda_{\max}\{K_p\} + k_g]^2} \|x\|^2. \quad (59)$$

Therefore, from (52) and (59), we can conclude that $x = 0$ is a globally exponentially stable equilibrium point for the reduced system (50) provided that (27) is satisfied (see Theorem 4.10, Khalil (2002)). So we have verified the assumption d) of Theorem 3.

e) By setting $\varepsilon = 0$ and considering that $\varepsilon \frac{dy}{dt'} = \frac{dy}{dt}$ in (32), we obtain the boundary-layer system:

$$\underbrace{\frac{d}{dt} \begin{bmatrix} y_1 \\ y_2 \end{bmatrix}}_{\frac{dy}{dt}} = \underbrace{\begin{bmatrix} -y_2 \\ M(q_d - y_1 - h_1(x))^{-1} \left[\text{Sat} \left[\text{Sat} \left(K_p (y_1 + h_1(x)) + g(q_d) + x \right) - K_v y_2 \right] \right. \\ \left. - C(q_d - y_1 - h_1(x), y_2) y_2 - g(q_d - y_1 - h_1(x)) \right] \end{bmatrix}}_{g(t,x,y+h(t,x),0)} \quad (60)$$

where, according to (33), x is frozen at $x = x(t_0)$, which corresponds to the robotic system under the Saturated PD Controller with Desired Gravity Compensation plus a constant vector x , whose unique equilibrium point is the origin, provided that (27) is satisfied.

The stability analysis of (60) has already been carried out in the previous subsection, where we concluded, in accordance with Proposition 1, that the origin of (60) is asymptotically stable and locally exponentially stable, uniformly in x . The uniformity in x is given straightforward with the asymptotic stability of the origin of (60) because it is an autonomous system. This checks the assumption e). Finally, we conclude, in accordance with Theorem 3, that the equilibrium point of the closed-loop system (18) is locally exponentially stable for a sufficiently small ε . Under Assumption 2 the constraints (9) are trivially satisfied. This completes the proof. \diamond

6. Experimental results

6.1 The PA10 robot system

The Mitsubishi PA10 arm is an industrial robot manipulator which completely changes the vision of conventional industrial robots. Its name is an acronym of *Portable General-Purpose Intelligent Arm*. There exist two versions (Higuchi et al., 2003): the PA10-6C and the PA10-7C, where the suffix digit indicates the number of degrees of freedom of the arm. This work focuses on the study of the PA10-7CE model, which is the enhanced version of the PA10-7C. The PA10-7CE robot is a 7-dof redundant manipulator with revolute joints. Figure 3 shows a diagram of the PA10 arm, indicating the positive rotation direction and the respective names of each of the joints. The PA10 arm is an open architecture robot; it means that it possesses (Oonishi, 1999):

- A hierarchical structure with several control levels.
- Communication between levels, via standard interfaces.
- An open general-purpose interface in the higher level.

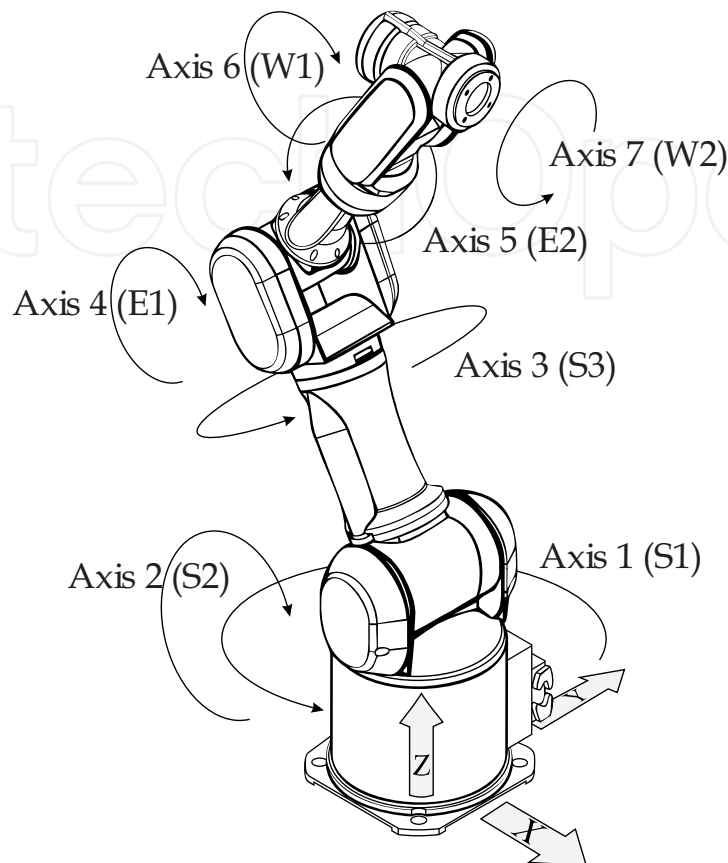


Fig. 3. Mitsubishi PA10-7CE robot

This scheme allows the user to focus on the programming of the tasks at the higher level of the PA10 system, without regarding on the operation of the lower levels. The control architecture of the PA10-7CE robot arm has been modified in order to have access to the low-level signals and configure it in both torque and velocity modes (Ramirez, 2008).

6.2 Numeric values of the parameters for the PA10-7CE.

The vector of gravitational torques for the PA10-7CE is (Ramirez, 2008):

$$g(q) = [g_1(q) \quad g_2(q) \quad \dots \quad g_n(q)]^T$$

where

$$g_1(q) = 0$$

$$\begin{aligned} g_2(q) = & 9.81(-6.9472\sin(q_2) - 3.1393(\cos(q_2)\cos(q_3)\sin(q_4) + \sin(q_2)\cos(q_4))) \\ & - 0.004(((-\cos(q_2)\cos(q_3)\cos(q_4) + \sin(q_2)\sin(q_4))\cos(q_5) \\ & + \cos(q_2)\sin(q_3)\sin(q_5))\sin(q_6) - (\cos(q_2)\cos(q_3)\sin(q_4) + \sin(q_2)\cos(q_4))\cos(q_6))) \end{aligned}$$

$$\begin{aligned} g_3(q) &= 9.81(3.1393\sin(q_2)\sin(q_3)\sin(q_4) - 0.004((\sin(q_2)\sin(q_3)\cos(q_4)\cos(q_5) \\ &\quad + \sin(q_2)\cos(q_3)\sin(q_5))\sin(q_6) + \sin(q_2)\sin(q_3)\sin(q_4)\cos(q_6))) \\ g_4(q) &= 9.81(-3.1393(\sin(q_2)\cos(q_3)\cos(q_4) + \cos(q_2)\sin(q_4)) - 0.004((\sin(q_2)\cos(q_3)\sin(q_4) \\ &\quad - \cos(q_2)\cos(q_4))\cos(q_5)\sin(q_6) - (\sin(q_2)\cos(q_3)\cos(q_4) + \cos(q_2)\sin(q_4))\cos(q_6))) \\ g_5(q) &= 9.81(-0.004(-\sin(q_5)(-\sin(q_2)\cos(q_3)\cos(q_4) \\ &\quad - \cos(q_2)\sin(q_4)) + \sin(q_2)\sin(q_3)\cos(q_5))\sin(q_6)) \\ g_6(q) &= 9.81(-0.004(((\sin(q_2)\cos(q_3)\cos(q_4) - \cos(q_2)\sin(q_4))\cos(q_5) \\ &\quad + \sin(q_2)\sin(q_3)\sin(q_5))\cos(q_6) + (\sin(q_2)\cos(q_3)\sin(q_4) - \cos(q_2)\cos(q_4))\sin(q_6))) \\ g_7(q) &= 0 \end{aligned}$$

The following expressions recall how the parameters of interest can be found:

$$k_g \geq n \max_{i,j,q} \left| \frac{\partial g_i(q)}{\partial q_j} \right|, \quad k_{g_i} \geq n \max_{j,q} \left| \frac{\partial g_i(q)}{\partial q_j} \right|,$$
$$\gamma_i \geq \sup_q |g_i(q)|, \quad k' \geq \sqrt{\gamma_1^2 + \gamma_2^2 + \dots + \gamma_n^2}.$$

The numerical values of the parameters for the PA10-7CE are shown in Table 1. The table also shows the torque and velocity saturation limits of each joint, which are employed to select the corresponding limits of the saturation functions in the controller.

Parameter	Joint 1	Joint 2	Joint 3	Joint 4	Joint 5	Joint 6	Joint 7	Units
k_{g_i}	0	909.58	216.39	432.25	0.8240	1.3734	0	[Nm/rad]
γ_i	0	129.94	30.91	61.75	0.11772	0.1962	0	[Nm]
τ_i^{\max}	232	232	100	100	14.5	14.5	14.5	[Nm]
v_i^{\max}	1	1	2	2	2π	2π	2π	[rad/s]
k_g	909.58							[Nm/rad]
k'	147.1513							[Nm]

Table 1. Numerical values of the parameters for the PA10-7CE

In order to illustrate the stability results described in the previous pages, this section shows a real-time experiment essay on the PA10-7CE robot system, using the controller proposed in this chapter, given by equation (12) and labeled in this section as Sat(Sat(PI)+P)), and the controller presented in Santibañez et al. (2010), labeled Sat(Sat(P)+PI),whose equation is given by

$$\tau \; = \; \text{Sat}\left[K_{pd}\text{Sat}\left(K_{pc}\tilde{q}; \; l_p, \; m_p\right) - K_{pd}\dot{q} \; + \; w; \; l_{pi}, \; m_{pi}\right] \tag{61}$$

$$w \; = \; K_{id}\int_0^t\left[\text{Sat}(K_{pc}\tilde{q}(r); \; l_p, \; m_p)-\dot{q}(r)\right]dr$$

where $K_{pd}, K_{pc}, K_{id} \in \mathbb{R}^{n \times n}$ are diagonal positive definite matrices, and we take $\alpha = 1$ (see Fig. 1). Each of the experiments consisted in taking the robot from the vertical home position (where $q = 0$) to the following desired position: $q_d = \left[-\frac{\pi}{2} \; \frac{\pi}{3} \; \frac{\pi}{2} \; \frac{\pi}{3} \; \frac{\pi}{2} \; -\frac{\pi}{2} \; \frac{\pi}{2}\right]^T$ rad.

6.3 Sat(Sat(PI)+P) scheme

Table 2 shows the values of the gains and the saturation limits for each joint of the proposed control scheme (12). It is easy to check that the assumptions (16), (17) and (27) are fulfilled. Figure 4 shows the evolution of the position error for each joint. It can be seen that transient responses are relatively fast (lower than 1 second for joints 4 to 7 and lower than 2 seconds for joints 1 to 3) without overshoot. The steady state error for each joint is lower than 0.4 degrees. Figure 5 shows the applied torque for each joint. The torques evolve inside of the prescribed limits. For the joints 4 to 7 the torques reach, sometimes, the permitted torque limits, confirming in this way the stability theoretical result.

Gain	Joint 1	Joint 2	Joint 3	Joint 4	Joint 5	Joint 6	Joint 7	Units
K_{pp}	10.0	100.0	60.0	60.0	50.0	35.0	30.0	[1/s]
K_{ip}	0.01	0.01	0.3	0.01	0.5	0.01	0.01	[1/s²]
K_{pv}	90.0	150.0	35.0	85.0	10.0	6.0	12.0	[Nm s/rad]
l_{pi}^*	0.95	0.95	1.75	1.75	5.5	5.5	5.5	[rad/s]
m_{pi}^*	1	1	1.9	1.9	6	6	6	[rad/s]
l_p	185	185	75	75	12	12	12	[Nm]
m_p	200	200	80	80	13	13	13	[Nm]

Table 2. Values of the control parameters selected for the Sat(Sat(PI)+P) scheme

6.4 Sat(Sat(P)+PI) scheme

Table 3 shows the values of the gains and the saturation limits for each joint of the control scheme (61). The parameters of the controller have been chosen in such a way that assumptions for the controller (61), given in (Santibañez et al., 2010), are satisfied. Figure 6 shows the position error for each joint. Slightly slower transient responses were obtained, but without overshoot. The steady state errors are similar to those obtained for the Sat(Sat(PI)+P) scheme. Figure 7 shows the evolution of the applied torques, which are more noisy than those of the proposed scheme.

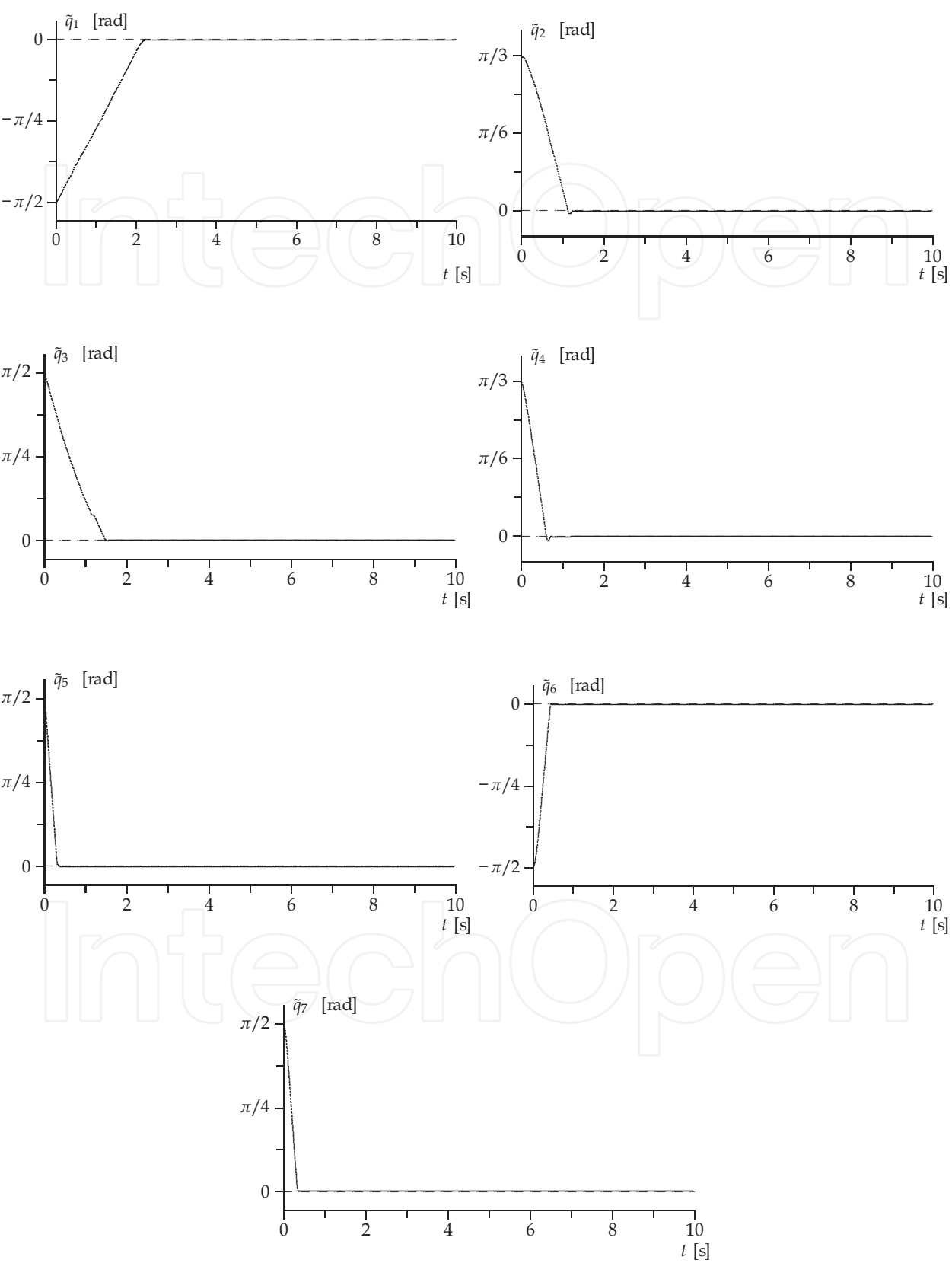


Fig. 4. Position errors for the (Sat(Sat(PI)+P)) scheme

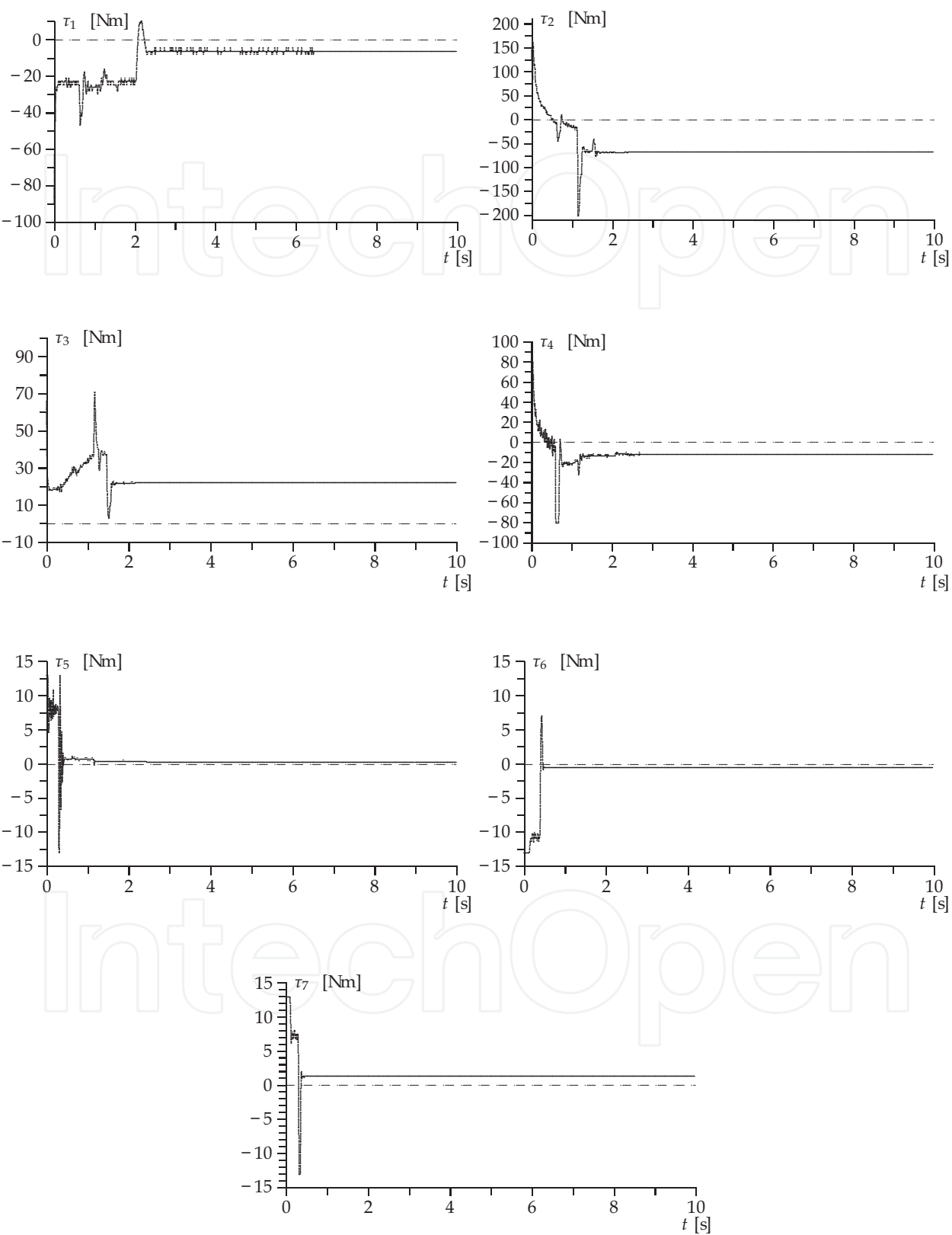


Fig. 5. Applied torques for the Sat(Sat(PI)+P) scheme

Gain	Joint 1	Joint 2	Joint 3	Joint 4	Joint 5	Joint 6	Joint 7	Units
K_{pc}	3.0	15.0	8.0	8.0	1.2	2.25	1.0	[1/s]
K_{pd}	40.0	280.0	45.0	110.0	15.0	12.0	8.0	[Nm s/rad]
K_{id}	15.0	18.0	10.0	12.0	5.0	8.0	4.0	[Nm/rad]
l_p	0.95	0.95	1.75	1.75	5.5	5.5	5.5	[rad/s]
m_p	1	1	1.9	1.9	6	6	6	[rad/s]
l_{pi}	185	185	75	75	12	12	12	[Nm]
m_{pi}	200	200	80	80	13	13	13	[Nm]

Table 3. Values of the control parameters selected for the Sat(Sat(P)+PI) scheme

7. Conclusions

In this chapter we have proposed an alternative to the saturated nonlinear PID controller previously presented by Santibañez et al. (2010) which, also, results from the practical implementation of the classical PID controller, by considering the natural saturations of the electronics in the control computer, servo drivers, and actuators. The stability analysis of the closed-loop system is carried out by using the singular perturbation theory. Based on auxiliary Lyapunov functions, we prove local exponential stability of the equilibrium point of the closed-loop system. It is also guaranteed that, regardless of the initial conditions, the delivered actuator torques evolve inside the permitted limits. Experimental results confirm the proposed analysis. Furthermore, the theoretical result explains why the classical linear PID regulator used in industrial robot manipulators preserves the exponential stability in spite of entering the saturation zones inherent to the electronic control devices and the actuator torque constraints.

8. Acknowledgement

This work is partially supported by PROMEP, DGEST, and CONACYT (grant 60230), Mexico.

9. References

Aguiñaga-Ruiz, E.; Zavala-Rio, A.; Santibañez, V. & Reyes, F. (2009). Global trajectory tracking through static feedback for robot manipulators with bounded inputs. *IEEE Transactions on Control Systems Technology*, Vol. 17, No. 4, pp. 934-944.

Alvarez-Ramirez, J.; Cervantes, I. & Kelly, R. (2000). PID regulation of robot manipulators: Stability and performance. *Systems and Control Letters*, Vol. 41, pp. 73-83.

Alvarez-Ramirez, J.; Kelly, R. & Cervantes, I. (2003). Semiglobal stability of saturated linear PID control for robot manipulators. *Automatica*, Vol. 39, pp. 989-995.

Alvarez-Ramirez, J.; Santibañez, V. & Campa, R. (2008). Stability of robot manipulators under saturated PID compensation. *IEEE Transactions on Control Systems Technology*, Vol. 16, No. 6, pp. 1333-1341.

Arimoto, S. (1995). Fundamental problems of robot control: Part I, Innovations in the realm of robot servo-loops. *Robotica*, Vol. 13, pp. 19-27.

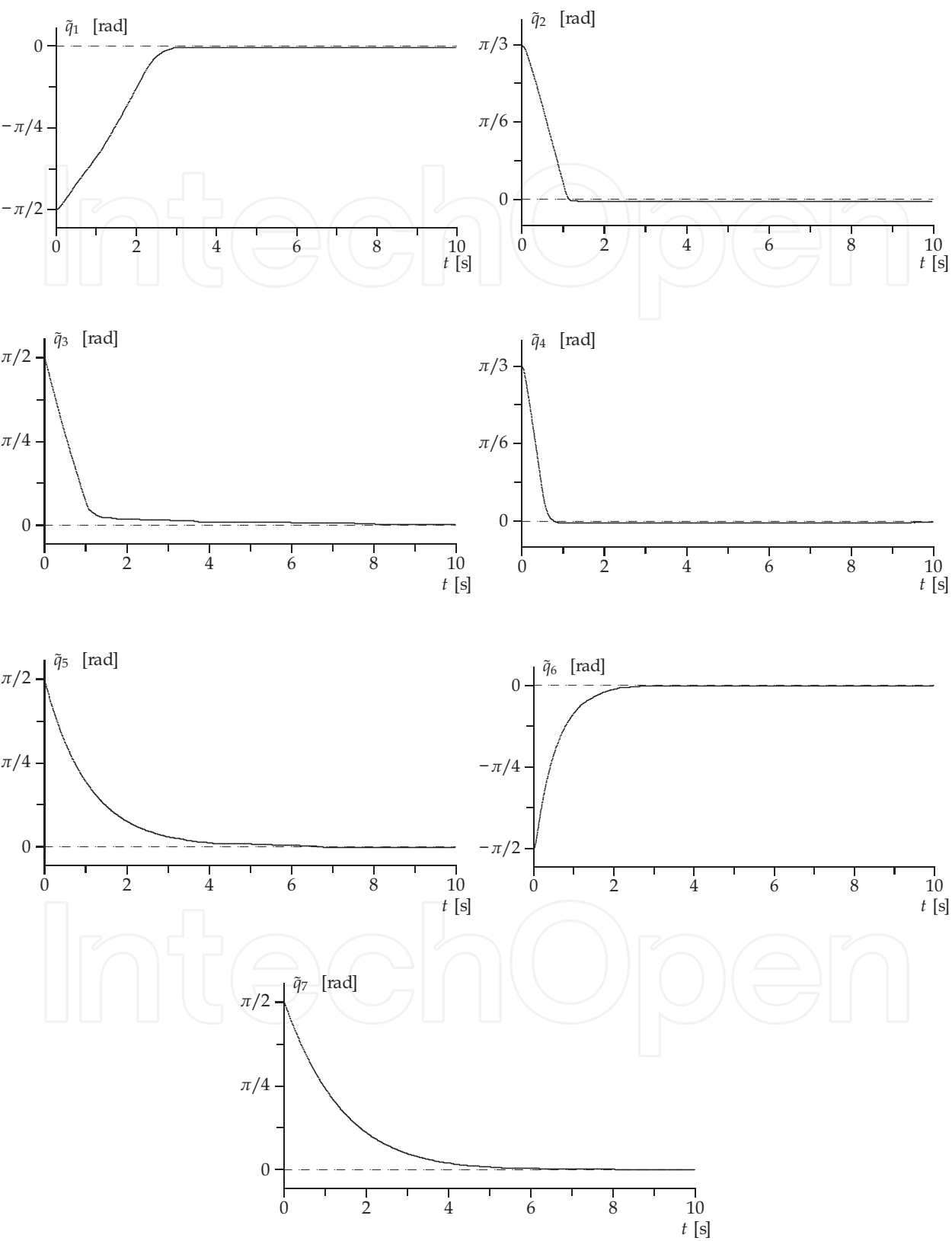


Fig. 6. Position errors for the Sat(Sat(P)+PI) scheme

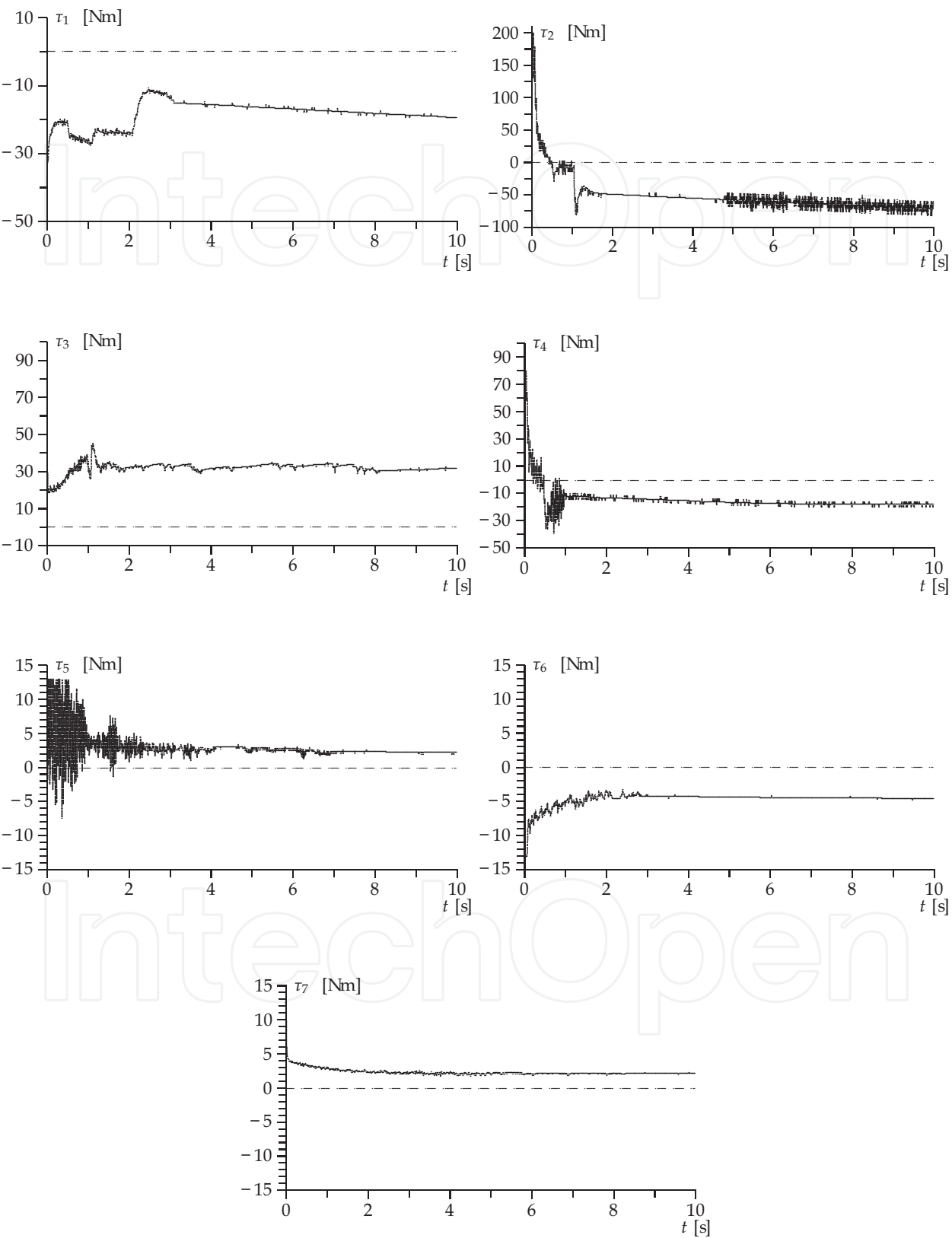


Fig. 7. Applied torques for the Sat(Sat(P)+PI) scheme

- Arimoto, S. & Miyazaki, F. (1984). Stability and robustness of PID feedback control for robot manipulators of sensory capability. In: *Robotics Researches: First International Symposium*, M. Brady and R.P. Paul (Eds.), pp. 783-799, MIT Press.
- Arimoto, S.; Naniwa, T. & Suzuki, H. (1990). Asymptotic stability and robustness of PID local feedback for position control of robot manipulators. *Proceedings of the International Conference on Automation Robotics and Computer Vision*, Singapore, June 1990.
- Camarillo, K.; Campa, R.; Santibañez, V. & Moreno J. (2008). Operational space control of industrial robots using their own joint velocity PI controllers: Stability analysis and experiments. *Robotica*, Vol 26, pp. 729-738.
- Cervantes, I. & Alvarez-Ramirez, J. (2001). On the PID tracking control of robot manipulators. *Systems and Control Letters*, Vol. 42, pp. 37-46.
- Choi, Y. & Chung, W. K. (2004). *PID trajectory tracking control for mechanical systems*. Springer-Verlag, 2004.
- Colbaugh, R.; Barany, E. & Glass, K. (1997) Global regulation of uncertain manipulators using bounded controls. *Proceedings of the IEEE International Conference on Robotics and Automation*, Albuquerque, NM, April 1997.
- Craig, J. J. (1998). *Adaptive Control of Mechanical Manipulators*, Addison-Wesley, 1998.
- Dixon, W. E. (2007). Adaptive regulation of amplitude limited robot manipulators with uncertain kinematics and dynamics. *IEEE Transactions on Automatic Control*, Vol. 52, No. 3, pp. 488-493.
- Dixon, W. E.; de Queiroz, M. S.; Zhang, F. & Dawson, D. M. (1999). Tracking control of robot manipulators with bounded torque inputs. *Robotica*, Vol. 17, pp. 121-129.
- Gorez, R. (1999). Globally stable PID-like control of mechanical systems. *Systems and Control Letters*, Vol. 38, pp. 61-72.
- Hernandez-Guzman, V.; Santibañez V. & Silva-Ortigoza R. (2008). A new tuning procedure for PID control of rigid robots. *Advanced Robotics*, Vol. 22, pp. 1007-1023.
- Higuchi, M.; Kawamura, T.; Kaikogi, T.; Murata, T. & Kawaguchi, M. (2003). Mitsubishi clean room robot. Mitsubishi Heavy Industries, Ltd., Technical Review, Vol. 40, No. 5, 2003.
- Horn, R. A. & Johnson, C. R. (1985). *Matrix Analysis*, Cambridge University Press.
- Kawamura, S.; Miyasaki, F. & Arimoto, S. (1988). Is a local linear PD feedback control law effective for trajectory tracking of robot motion?. *Proceedings of the IEEE Conference on Robotics and Automation*, Philadelphia, PA., March 1988.
- Kelly, R. (1995a). Regulation of robotic manipulators: Stability analysis via the Lyapunov's first method. Technical report, CICESE, Ensenada, Mexico.
- Kelly R. (1995b). A tuning procedure for stable PID control of robot manipulators. *Robotica*, Vol. 13, No. 2, pp. 141-148.
- Kelly R. (1998). Global positioning of robot manipulators via PD control plus a class of nonlinear integral actions. *IEEE Transactions on Automatic Control*, Vol. 43, No. 7, pp. 934-938.
- Kelly R. & Moreno, J. (2001). Learning PID structures in an introductory course of automatic control. *IEEE Transactions on Education*, Vol. 44, No. 4, pp. 373-376.
- Kelly, R. & Santibañez, V. (1996). A class of global regulators with bounded control actions for robot manipulators. *Proceedings of the IEEE Conference on Decision and Control*, Kobe, Japan, December 1996.
- Kelly, R.; Santibañez, V. & Loria, A. (2005) *Control of Robot Manipulators in Joint Space*, Springer-Verlag, 2005.
- Khalil, H. (2002). *Nonlinear Systems*, Prentice Hall, 2002.
- Koditschek, D. (1984). Natural motion for robot arms. *Proceedings of the IEEE Conference on Decision and Control*, Las Vegas, NV, December 1984.

- Laib, A. (2000). Adaptive output regulation of robot manipulators under actuator constraints. *IEEE Transactions on Robotics and Automation*, Vol. 16, pp. 29-35.
- Loria, A.; Kelly, R.; Ortega, R. & Santibañez, V. (1997). On global output feedback regulation of Euler-Lagrange systems with bounded inputs. *IEEE Transactions on Automatic Control*, Vol. 42, pp. 1138-1143.
- Loria, A. & Nijmeijer, H. (1998). Bounded output feedback tracking control of fully actuated Euler-Lagrange systems. *Systems and Control Letters*, Vol. 33, pp. 151-161.
- Meza, J. L. & Santibañez, V. (1999). Analysis via passivity theory of a class of nonlinear PID global regulators for robot manipulators. *Proceedings of the IASTED International Conference on Robotics and Applications*, Santa Barbara, CA, October 1999.
- Meza, J. L.; Santibañez, V. & Campa, R. (2007). An estimate of the domain of attraction for the PID regulator of manipulators. *International Journal of Robotics and Automation*, Vol. 22, No. 3, pp. 187-195.
- Meza, J. L.; Santibañez, V. & Hernandez, V. (2005). Saturated nonlinear PID global regulator for robot manipulators: Passivity based analysis. *Proceedings of the 16th IFAC World Congress*, Prague, Czech Republic, 2005.
- Moreno, J.; Santibañez, V. & Campa, R. (2008a). A class of OFT controllers for torque-saturated robot manipulators: Lyapunov stability and experimental evaluation. *Journal of Intelligent and Robotic Systems*, Vol. 51, pp. 65-88.
- Moreno, J.; Santibañez, V. & Campa, R. (2008b). An output feedback tracking control of robot manipulators with bounded torque input. *International Journal of Control, Automation, and Systems*, Vol. 6, No. 1, pp. 76-85.
- Oonishi, K. (1999). The open manipulator system of the MHIPA-10 robot. *Proceedings of the International Symposium on Robotics*, Tokyo, Japan, October 1999.
- Ortega, R.; Loria, A. & Kelly, R. (1995). A semiglobally stable output feedback PID regulator for robot manipulators, *IEEE Transactions on Automatic Control*, Vol. 40, No. 8, pp. 1432-1436.
- Ortega, R. & Spong, M. (1989). Adaptive motion control of rigid robots: a tutorial. *Automatica*, Vol. 25, No. 6, pp. 877-888.
- Qu, Z. & Dorsey, J. (1991). Robust PID control of robots, *International Journal of Robotics and Automation*, Vol. 6, No. 4, pp. 228-235.
- Ramirez, C. (2008). Dynamic modeling and torque-mode control of the Mitsubishi PA10-7CE robot. Master's thesis (in Spanish). Instituto Tecnológico de la Laguna, Torreon, Mexico, December 2008.
- Reyes, R. & Kelly, R. (2001). Experimental evaluation of model-based controllers on a direct-drive robot arm. *Mechatronics*, Vol. 11, No. 3, pp. 267-282.
- Rocco, P. (1996). Stability of PID control for industrial robot arms, *IEEE Transactions on Robotics and Automation*, Vol. 12, No. 4, pp. 606-614.
- Santibañez, V.; Camarillo, K.; Moreno-Valenzuela, J. & Campa, R. (2010). A practical PID regulator with bounded torques for robot manipulators. *International Journal of Control Automation and Systems*, Vol. 8, No. 3, pp. 544-555.
- Santibañez, V. & Kelly, R. (1997). On global regulation of robot manipulators: Saturated linear state feedback and saturated linear output feedback, *European Journal of Control*, Vol. 3, pp. 104-113.
- Santibañez, V. & Kelly, R. (1998a). A class of nonlinear PID global regulators for robot manipulators. *Proceedings of the IEEE International Conference on Robotics and Automation*, Leuven, Belgium, May 1998.
- Santibañez, V. & Kelly, R. (1998b). A new set-point controller with bounded torques for robot manipulators, *IEEE Transactions on Industrial Electronics*, Vol. 45, pp. 126-133.

- Santibañez, V. & Kelly, R. (2001). Global asymptotic stability of bounded output feedback tracking control for robot manipulators, *Proceedings of the IEEE International Conference on Decision and Control*, Orlando, FL, December 2001.
- Santibañez, V.; Kelly, R.; Zavala-Rio, A. & Parada, P. (2008). A new saturated nonlinear PID global regulator for robot manipulators, *Proceedings of the 17th IFAC World Congress*, Seoul, Korea, July 2008.
- Spong, M. & Vidyasagar, M. (1989). *Robot Dynamics and Control*, John Wiley and Sons, 1989.
- Sun, D.; Hu, S.; Shao, X. & Liu, C. (2009). Global stability of a saturated nonlinear PID controller for robot manipulators. *IEEE Transactions on Control Systems Technology*, Vol. 17, No. 4, pp. 892-899.
- Teel, A. R. (1992). Global stabilization and restricted tracking for multiple integrators with bounded controls. *Systems and Control Letters*, Vol. 18, No. 3, pp. 165-171.
- Wen, J. T. & Murphy, S. (1990). PID control for robot manipulators, *CIRSSE Document 54*, Rensselaer Polytechnic Institute, May 1990.
- Zavala-Rio, A.; Aguinaga-Ruiz, E. & Santibanez, V. (2010). Global trajectory tracking through output feedback for robot manipulators with bounded inputs. *Asian Journal of Control*. To appear.
- Zavala-Rio, A. & Santibañez, V. (2006) Simple extensions of the PD-with-gravity-compensation control law for robot manipulators with bounded inputs, *IEEE Transactions on Control Systems Technology*, Vol. 14, No. 5, pp. 958-965.
- Zavala-Rio, A. & Santibañez, V. (2007) A natural saturating extension of the PD-with-desired-gravity compensation control law for robot manipulators with bounded inputs, *IEEE Transactions on Robotics*, Vol. 23, No.2, pp. 386-391.
- Zergeroglu, E.; Dixon, W.; Behal, A. & Dawson, D. (2000). Adaptive set-point control of robotic manipulators with amplitude-limited control inputs, *Robotica*, Vol. 18, pp. 171-181.

Appendix A

In this section we prove that (26) has a unique solution $\tilde{q} = h(x) \in \mathbb{R}^n$, provided that

$$k_{p_i} > k_{g_i} \geq n \left(\max_{q,j} \left| \frac{\partial g_i(q)}{\partial q_j} \right| \right) \quad \text{where } i = 1, 2, \dots, n \text{ and } j = 1, 2, \dots, n.$$

To this end, notice that we can rewrite (26) as

$$\tilde{q} = \begin{bmatrix} \tilde{q}_1 \\ \tilde{q}_2 \\ \vdots \\ \tilde{q}_n \end{bmatrix} = \begin{bmatrix} \frac{g_1(q) - g_1(q_d) - x_1}{k_{p_1}} \\ \frac{g_2(q) - g_2(q_d) - x_2}{k_{p_2}} \\ \vdots \\ \frac{g_n(q) - g_n(q_d) - x_n}{k_{p_n}} \end{bmatrix} = f(\tilde{q}, q_d). \quad (62)$$

If $f(\tilde{q}, q_d)$ satisfies the Contraction Mapping Theorem (Kelly et al., 2005; Khalil, 2002), then (62) has a unique solution \tilde{q}^* . Considering this, we have

$$\begin{aligned}
\|f(v, q_d) - f(w, q_d)\| &= \left\| \begin{bmatrix} \frac{g_1(q_d - v) - g_1(q_d) - x_1 - g_1(q_d - w) + g_1(q_d) + x_1}{k_{p_1}} \\ \frac{g_2(q_d - v) - g_2(q_d) - x_2 - g_2(q_d - w) + g_2(q_d) + x_2}{k_{p_2}} \\ \vdots \\ \frac{g_n(q_d - v) - g_n(q_d) - x_n - g_n(q_d - w) + g_n(q_d) + x_n}{k_{p_n}} \end{bmatrix} \right\| \\
&= \left\| \begin{bmatrix} \frac{g_1(q_d - v) - g_1(q_d - w)}{k_{p_1}} \\ \frac{g_2(q_d - v) - g_2(q_d - w)}{k_{p_2}} \\ \vdots \\ \frac{g_n(q_d - v) - g_n(q_d - w)}{k_{p_n}} \end{bmatrix} \right\| \quad (63)
\end{aligned}$$

Using Theorem 1, we can rewrite $g_i(q_d - v) - g_i(q_d - w)$ as

$$g_i(q_d - v) - g_i(q_d - w) = \frac{\partial g_i(z)}{\partial z_1} \bigg|_{z=\xi_i} (w_1 - v_1) + \frac{\partial g_i(z)}{\partial z_2} \bigg|_{z=\xi_i} (w_2 - v_2) + \dots + \frac{\partial g_i(z)}{\partial z_n} \bigg|_{z=\xi_i} (w_n - v_n) \quad (64)$$

where ξ_i is a vector on the line segment that joins vectors w and v , and, by substituting in (63), we obtain

$$\begin{aligned}
\|f(v, q_d) - f(w, q_d)\| &= \left\| \begin{bmatrix} \frac{g_1(q_d - v) - g_1(q_d - w)}{k_{p_1}} \\ \frac{g_2(q_d - v) - g_2(q_d - w)}{k_{p_2}} \\ \vdots \\ \frac{g_n(q_d - v) - g_n(q_d - w)}{k_{p_n}} \end{bmatrix} \right\| \\
&= \left\| \begin{bmatrix} \frac{\frac{\partial g_1(z)}{\partial z_1} \big|_{z=\xi_1} (w_1 - v_1) + \frac{\partial g_1(z)}{\partial z_2} \big|_{z=\xi_1} (w_2 - v_2) + \dots + \frac{\partial g_1(z)}{\partial z_n} \big|_{z=\xi_1} (w_n - v_n)}{k_{p_1}} \\ \frac{\frac{\partial g_2(z)}{\partial z_1} \big|_{z=\xi_2} (w_1 - v_1) + \frac{\partial g_2(z)}{\partial z_2} \big|_{z=\xi_2} (w_2 - v_2) + \dots + \frac{\partial g_2(z)}{\partial z_n} \big|_{z=\xi_2} (w_n - v_n)}{k_{p_2}} \\ \vdots \\ \frac{\frac{\partial g_n(z)}{\partial z_1} \big|_{z=\xi_n} (w_1 - v_1) + \frac{\partial g_n(z)}{\partial z_2} \big|_{z=\xi_n} (w_2 - v_2) + \dots + \frac{\partial g_n(z)}{\partial z_n} \big|_{z=\xi_n} (w_n - v_n)}{k_{p_n}} \end{bmatrix} \right\|
\end{aligned}$$

$$\begin{aligned}
&= \|A[w - v]\| \\
&\leq \|A\| \|w - v\|
\end{aligned}$$

where

$$A = \begin{bmatrix} \left. \frac{1}{k_{p_1}} \frac{\partial g_1(z)}{\partial z_1} \right|_{z=\xi_1} & \left. \frac{1}{k_{p_1}} \frac{\partial g_1(z)}{\partial z_2} \right|_{z=\xi_1} & \cdots & \left. \frac{1}{k_{p_1}} \frac{\partial g_1(z)}{\partial z_n} \right|_{z=\xi_1} \\ \left. \frac{1}{k_{p_2}} \frac{\partial g_2(z)}{\partial z_1} \right|_{z=\xi_2} & \left. \frac{1}{k_{p_2}} \frac{\partial g_2(z)}{\partial z_2} \right|_{z=\xi_2} & \cdots & \left. \frac{1}{k_{p_2}} \frac{\partial g_2(z)}{\partial z_n} \right|_{z=\xi_2} \\ \vdots & \vdots & \ddots & \vdots \\ \left. \frac{1}{k_{p_n}} \frac{\partial g_n(z)}{\partial z_1} \right|_{z=\xi_n} & \left. \frac{1}{k_{p_n}} \frac{\partial g_n(z)}{\partial z_2} \right|_{z=\xi_n} & \cdots & \left. \frac{1}{k_{p_n}} \frac{\partial g_n(z)}{\partial z_n} \right|_{z=\xi_n} \end{bmatrix} \quad (65)$$

If $\|A\| < 1$, then $f(\tilde{q}, q_d)$ fulfills the Contraction Mapping Theorem. Now notice that

$$\|A\| = \sqrt{\lambda_{\max}\{A^T A\}}. \quad (66)$$

By defining $\left. \frac{\partial g_i(z)}{\partial z_j} \right|_{z=\xi_i} = \Delta g_{ij}$, we have that

$$\begin{aligned}
A^T A &= \begin{bmatrix} \frac{\Delta g_{11}}{k_{p_1}} & \frac{\Delta g_{21}}{k_{p_2}} & \cdots & \frac{\Delta g_{n1}}{k_{p_n}} \\ \frac{\Delta g_{12}}{k_{p_1}} & \frac{\Delta g_{22}}{k_{p_2}} & \cdots & \frac{\Delta g_{n2}}{k_{p_n}} \\ \vdots & \vdots & \ddots & \vdots \\ \frac{\Delta g_{1n}}{k_{p_1}} & \frac{\Delta g_{2n}}{k_{p_2}} & \cdots & \frac{\Delta g_{nn}}{k_{p_n}} \end{bmatrix} \begin{bmatrix} \frac{\Delta g_{11}}{k_{p_1}} & \frac{\Delta g_{12}}{k_{p_1}} & \cdots & \frac{\Delta g_{1n}}{k_{p_1}} \\ \frac{\Delta g_{21}}{k_{p_2}} & \frac{\Delta g_{22}}{k_{p_2}} & \cdots & \frac{\Delta g_{2n}}{k_{p_2}} \\ \vdots & \vdots & \ddots & \vdots \\ \frac{\Delta g_{n1}}{k_{p_n}} & \frac{\Delta g_{n2}}{k_{p_n}} & \cdots & \frac{\Delta g_{nn}}{k_{p_n}} \end{bmatrix} \\
&= \begin{bmatrix} \frac{\Delta g_{11}^2}{k_{p_1}^2} + \frac{\Delta g_{21}^2}{k_{p_2}^2} + \cdots + \frac{\Delta g_{n1}^2}{k_{p_n}^2} & \frac{\Delta g_{12}\Delta g_{11}}{k_{p_1}^2} + \frac{\Delta g_{22}\Delta g_{21}}{k_{p_2}^2} + \cdots + \frac{\Delta g_{n2}\Delta g_{n1}}{k_{p_n}^2} & \cdots & \frac{\Delta g_{1n}\Delta g_{11}}{k_{p_1}^2} + \frac{\Delta g_{2n}\Delta g_{21}}{k_{p_2}^2} + \cdots + \frac{\Delta g_{nn}\Delta g_{n1}}{k_{p_n}^2} \\ \frac{\Delta g_{12}\Delta g_{11}}{k_{p_1}^2} + \frac{\Delta g_{22}\Delta g_{21}}{k_{p_2}^2} + \cdots + \frac{\Delta g_{n2}\Delta g_{n1}}{k_{p_n}^2} & \frac{\Delta g_{12}^2}{k_{p_1}^2} + \frac{\Delta g_{22}^2}{k_{p_2}^2} + \cdots + \frac{\Delta g_{n2}^2}{k_{p_n}^2} & \cdots & \frac{\Delta g_{12}\Delta g_{1n}}{k_{p_1}^2} + \frac{\Delta g_{22}\Delta g_{2n}}{k_{p_2}^2} + \cdots + \frac{\Delta g_{n2}\Delta g_{nn}}{k_{p_n}^2} \\ \vdots & \vdots & \ddots & \vdots \\ \frac{\Delta g_{1n}\Delta g_{11}}{k_{p_1}^2} + \frac{\Delta g_{2n}\Delta g_{21}}{k_{p_2}^2} + \cdots + \frac{\Delta g_{nn}\Delta g_{n1}}{k_{p_n}^2} & \frac{\Delta g_{1n}\Delta g_{12}}{k_{p_1}^2} + \frac{\Delta g_{2n}\Delta g_{22}}{k_{p_2}^2} + \cdots + \frac{\Delta g_{nn}\Delta g_{n2}}{k_{p_n}^2} & \cdots & \frac{\Delta g_{1n}^2}{k_{p_1}^2} + \frac{\Delta g_{2n}^2}{k_{p_2}^2} + \cdots + \frac{\Delta g_{nn}^2}{k_{p_n}^2} \end{bmatrix}
\end{aligned}$$

Considering (5) and (27), we have that each element in $A^T A$ fulfills

$$|A^T A(i, j)| < \frac{1}{n}. \quad (67)$$

Now, knowing that the eigenvalues of any matrix B , where b_{ij} denotes its ij -th element, fulfill (Horn & Johnson, 1985):

$$|\lambda_k| \leq n \left[\max_{i,j} \{ |b_{ij}| \} \right] \quad \forall k = 1, \dots, n$$

we obtain that

$$\lambda_k \{A^T A\} \leq \lambda_{\max} \{A^T A\} \leq n \left[\max_{i,j} \{ |A^T A(i, j)| \} \right] < n \left[\frac{1}{n} \right] = 1$$

and consequently we have that $\|A\| = \sqrt{\lambda_{\max} \{A^T A\}} < \sqrt{1} = 1$. Therefore, we get $\|f(v, q_d) - f(w, q_d)\| \leq \|A\| \|w - v\|$ where $\|A\|$ is strictly smaller than the unity. Hence, we have that (26) has a unique solution $\tilde{q} = h(x) \in \mathbb{R}^n$ provided that:

$$k_{p_i} > n \left(\max_{q,j} \left| \frac{\partial g_i(q)}{\partial q_j} \right| \right) \quad \text{where } i = 1, 2, \dots, n \text{ and } j = 1, 2, \dots, n.$$

Appendix B

The positive definiteness and radial unboundedness analysis of $W(\tilde{q}, \dot{q})$ is dealt in this appendix. The Lyapunov function candidate $W(\tilde{q}, \dot{q})$ can be written as:

$$W(\tilde{q}, \dot{q}) = \frac{1}{2} \dot{q}^T M(q) \dot{q} + W_1(\tilde{q})$$

with

$$\begin{aligned} W_1(\tilde{q}) &= \sum_{i=1}^n \int_0^{\tilde{q}_i} \left[\text{Sat} \left[\text{Sat}(k_{p_i} r_i + x_i + g_i(q_d)) \right] - \bar{g}_i(r_i) \right] dr_i \\ &\quad - \sum_{i=1}^n \int_0^{h_i(x)} \left[\text{Sat} \left[\text{Sat}(k_{p_i} r_i + x_i + g_i(q_d)) \right] - \bar{g}_i(r_i) \right] dr_i. \end{aligned} \quad (68)$$

where

$$\begin{aligned} \bar{g}_1(r_1) &= g_1(q_{d_1} - r_1, q_{d_2}, \dots, q_{d_n}) \\ \bar{g}_2(r_2) &= g_2(q_{d_1} - \tilde{q}_1, q_{d_2} - r_2, \dots, q_{d_n}) \\ &\vdots \\ \bar{g}_n(r_n) &= g_n(q_{d_1} - \tilde{q}_1, q_{d_2} - \tilde{q}_2, \dots, q_{d_n} - r_n) \end{aligned}$$

Notice that the positive definiteness and the radial unboundedness of $W_1(\tilde{q}, \dot{q})$ implies the positive definiteness and the radial unboundedness of $W(\tilde{q}, \dot{q})$.

Let us define a region β_1 where the saturation functions of the P and PI parts of the controller work in their linear section, such that:

$$\beta_1 = \{\tilde{q}_i : |k_{p_i} r_i + x_i + g_i(q_d)| < l_{p_i} \text{ and } |k_{p_i} r_i + x_i + g_i(q_d)| < l_{p_i}\}.$$

Notice that, in this region we have that $\text{Sat}[\text{Sat}(k_{p_i} \tilde{q}_i + x_i + g_i(q_d))] = k_{p_i} \tilde{q}_i + x_i + g_i(q_d)$. For this case, we will show that $W_1(\tilde{q})$ is a strictly convex function with a unique minimum

point at $\tilde{q} = h_1(x)$. To this end, we evaluate $W_1(\tilde{q})$ at $\tilde{q} = h_1(x)$ and obtain its gradient and Hessian:

a) $W_1(\tilde{q})|_{\tilde{q}=h_1(x)}$ can be written as:

$$\begin{aligned} W_1(\tilde{q})|_{\tilde{q}=h_1(x)} &= \sum_{i=1}^n \int_0^{\tilde{q}_i} \left[k_{p_i} r_i + x_i + g_i(q_d) - \bar{g}_i(r_i) \right] dr_i \Big|_{\tilde{q}=h_1(x)} \\ &\quad - \sum_{i=1}^n \int_0^{h_{1_i}(x)} \left[k_{p_i} r_i + x_i + g_i(q_d) - \bar{g}_i(r_i) \right] dr_i \\ &= 0 \end{aligned}$$

b) The gradient of $W_1(\tilde{q})$ with respect to \tilde{q} is given by:

$$\frac{\partial W_1(\tilde{q})}{\partial \tilde{q}} = K_p \tilde{q} + x + g(q_d) - g(q_d - \tilde{q}) = 0. \quad (69)$$

Under assumption (27), and by using the Contraction Mapping Theorem, (69) has a unique solution $\tilde{q} = h_1(x)$, that is, a unique critical point.

c) The Hessian of $W_1(\tilde{q})$ with respect to \tilde{q} is given by:

$$\frac{\partial^2 W_1(\tilde{q})}{\partial \tilde{q}^2} = K_p - \frac{\partial g(q_d - \tilde{q})}{\partial \tilde{q}} = 0$$

which is a positive definite function for all $\tilde{q} \in \mathbb{R}^n$ provided that (Hernandez-Guzman et al., 2008):

$$k_{p_i} > \sum_{j=1}^n \max_q \left| \frac{\partial g_j(q)}{\partial q_i} \right| \quad (70)$$

Note that (27) implies (70).

Therefore, in the linear region β_1 , $W_1(\tilde{q})$ is a strictly convex function with a unique minimal point $\tilde{q} = h_1(x)$ which implies that $W_1(\tilde{q} - h_1(x))$ is a locally positive definite function.

Also notice that the gradient of $W_1(\tilde{q})$ with respect to \tilde{q} is given globally by

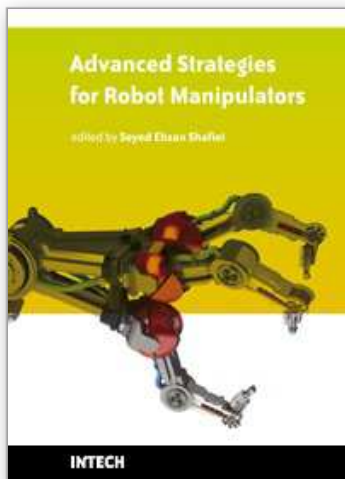
$$\frac{\partial W_1(\tilde{q})}{\partial \tilde{q}} = \text{Sat} \left[\text{Sat} \left(K_p \tilde{q} + x + g(q_d) \right) \right] - g(q_d - \tilde{q}) \quad (71)$$

which, under Assumption 2, will have a unique critical point for all $\tilde{q}_i \in \mathbb{R}$ with $i = 1, 2, \dots, n$, and hence, the minimum point of $W_1(\tilde{q})$ results to be a global minimum point $\tilde{q} = h_1(x)$.

In order to prove radially unboundedness of $W_1(\tilde{q})$, it is possible to prove that outside of the region β_1 the function $W_1(\tilde{q})$ can be lower bounded by straight lines of the type

$$W_{\beta_i} = k_{\beta 1_i} |\tilde{q}_i - h_{1_i}(x)| - c_i$$

where $k_{\beta 1_i}$ and c_i are suitable constants. So, $|\tilde{q}_i - h_{1_i}(x)| \rightarrow \infty$ implies $W_{\beta_i} \rightarrow \infty$ for $i = 1, 2, \dots, n$; therefore $W(\tilde{q}) \rightarrow \infty$ as $\|\tilde{q}\| \rightarrow \infty$, which proves that $W_1(\tilde{q})$ is radially unbounded.



Advanced Strategies for Robot Manipulators

Edited by S. Ehsan Shafiei

ISBN 978-953-307-099-5

Hard cover, 428 pages

Publisher Sciyo

Published online 12, August, 2010

Published in print edition August, 2010

Amongst the robotic systems, robot manipulators have proven themselves to be of increasing importance and are widely adopted to substitute for human in repetitive and/or hazardous tasks. Modern manipulators are designed complicatedly and need to do more precise, crucial and critical tasks. So, the simple traditional control methods cannot be efficient, and advanced control strategies with considering special constraints are needed to establish. In spite of the fact that groundbreaking researches have been carried out in this realm until now, there are still many novel aspects which have to be explored.

How to reference

In order to correctly reference this scholarly work, feel free to copy and paste the following:

Jorge Orrante-Sakanassi, Victor Santibanez and Ricardo Campa (2010). On Saturated PID Controllers for Industrial Robots: the PA10 Robot Arm as Case of Study, *Advanced Strategies for Robot Manipulators*, S. Ehsan Shafiei (Ed.), ISBN: 978-953-307-099-5, InTech, Available from:
<http://www.intechopen.com/books/advanced-strategies-for-robot-manipulators/on-saturated-pid-controllers-for-industrial-robots-the-pa10-robot-arm-as-case-of-study>

INTECH
open science | open minds

InTech Europe

University Campus STeP Ri
Slavka Krautzeka 83/A
51000 Rijeka, Croatia
Phone: +385 (51) 770 447
Fax: +385 (51) 686 166
www.intechopen.com

InTech China

Unit 405, Office Block, Hotel Equatorial Shanghai
No.65, Yan An Road (West), Shanghai, 200040, China
中国上海市延安西路65号上海国际贵都大饭店办公楼405单元
Phone: +86-21-62489820
Fax: +86-21-62489821

© 2010 The Author(s). Licensee IntechOpen. This chapter is distributed under the terms of the [Creative Commons Attribution-NonCommercial-ShareAlike-3.0 License](https://creativecommons.org/licenses/by-nc-sa/3.0/), which permits use, distribution and reproduction for non-commercial purposes, provided the original is properly cited and derivative works building on this content are distributed under the same license.

IntechOpen

IntechOpen