

We are IntechOpen, the world's leading publisher of Open Access books Built by scientists, for scientists

6,900

Open access books available

186,000

International authors and editors

200M

Downloads

Our authors are among the

154

Countries delivered to

TOP 1%

most cited scientists

12.2%

Contributors from top 500 universities



WEB OF SCIENCE™

Selection of our books indexed in the Book Citation Index
in Web of Science™ Core Collection (BKCI)

Interested in publishing with us?
Contact book.department@intechopen.com

Numbers displayed above are based on latest data collected.
For more information visit www.intechopen.com



Ozone pollution and its bioindication

Vanda Villányi¹, Boris Turk², Franc Batic² and Zsolt Csintalan¹

¹*Szent István University, Institute of Botany and Ecophysiology, Gödöllő, Hungary*

²*University of Ljubljana, Biotechnical Faculty, Department of Agronomy, Ljubljana, Slovenia*

1. Introduction

Triplet oxygen is a highly reactive molecule. Naturally it arises in the stratosphere, but it can as well develop through the chain reactions of photochemical smog in the troposphere. Photochemical smog occurs in highly polluted urban and industrial areas in the presence of high solar radiation. Ozone develops in the reaction of oxygen molecules with the singlet oxygen splitting off from nitrogen-oxides in the presence of UV-radiation. This reaction is quick and reversible, so the formation and degradation of ozone show steady-state balance (Crutzen et al., 1994). However, if there are hydrocarbons emitted in the atmosphere of a certain area, these will change the chemical reactions, interfering ozone to transform back to oxygen molecules. Thus, the quantity of ozone serves information about the quality and the components of photochemical smog. If nitrogen-oxides overweigh, after reacting with them, ozone dissolves again. Therefore in many cases the concentration of tropospheric ozone increases far away from the most polluted areas. Volatile organic compounds can also cause imbalance resulting ozone accumulation. Ozone and its precursors can float hundreds of kilometers from their sources and its formation often happens only during its moving with air masses. Since there are less chemical reagents by which its dissolution takes place far from the cities, the amount of ozone above cities is relatively small while passing away from urban areas this amount is gradually growing. Thus, ozone virtually originating from cities endangers natural vegetation and cultivated plants (Lorenzini and Saitanis, 2003).

Ozone affects cultivated plants in a short-term as well as in a long-term way. Visible symptoms and impairment of the photosynthetic efficiency can be named as short-term effects, while in a long term, in particular when high ozone concentrations frequently occur, it causes decrease in growth and yield, and leads to premature senescence. (Harmens et al., 2006).

The significance of ozone pollution and its effects has been clearly verified by several studies:

Ozone concentrations exceed the phytotoxic thresholds specified by the European Council all over Europe, and this amount grows by 5-20% per year (Sandermann et al., 1998).

Ozone reduces crop yield and biomass of sensitive species, and affects the crop quality (Hayes et al, 2007).

Based on the ozone levels of the year 2000, ozone induced yield losses for 23 crops in 47 European countries were estimated to be €6,7 billion per year (Holland et al., 2006).

Ozone reduces plant's Net Primary Production and the Net C Exchange thus increasing the C losses from different cropping systems; increases CO₂ emissions, crop nitrate loss and groundwater nitrate pollution. Several natural plant communities proved to be potentially ozone-sensitive (Mills et al., 2007). In natural ecosystems, in addition to the above mentioned effects, ozone can change the species composition causing similar changes in animal species composition as well (Fagnano and Maggio, 2008).

Thus, detection of phytotoxic levels of ozone and examination of its effects on sensitive plant species is highly important in economical as well as in environmental regards.

2. Ozone in the troposphere

2.1 Formation of ozone

The short wave radiation of solar spectrum is entirely absorbed by stratospheric ozone and molecular oxygen. The infrared part of the spectrum is mostly absorbed by water vapour and carbon dioxide and some other greenhouse gases. Photochemistry in the troposphere is therefore driven by radiation with wavelengths between 300 and 600 nm (Seinfeld and Pandis, 1998).

Photooxidants are compounds formed by the oxidation processes of tropospheric gas phase chemistry. They include ozone and other compounds such as HNO₃, PAN and aldehydes.

Gas phase chemistry in the troposphere (as well as in the stratosphere) includes a variety of reactions that can be viewed as the reactions of a radical reaction chain which consists of the following type of reactions:

1. Initiation reactions: Photolysis of certain molecules (ozone, HCHO, HONO, NO₂), producing reactive radicals (O, OH, HO₂). HO₂ is also converted to OH, which is very reactive, oxidizing most gaseous (reactive) compounds. Thus, OH radicals determine the oxidation capacity of the troposphere, and they are called as the „cleansing agent“ of the troposphere.
2. Propagation or radical chain: The very reactive radicals produced by the initiation reactions react with most molecules, causing sequences of radical reactions in which the same radicals are formed again, leading to a radical chain, e.g. one chlorine radical formed from one CFC₃ depletes not only one O₃ but many O₃ molecules since Cl is reformed by the reaction of ClO with O.
3. Termination: If two radicals react with each other, less reactive non radical species can be formed. These reactions stop the radical chain.

(The molecules formed in the termination reactions can be activated again or different radical chains can interact with each other.)

There are two (connected) types of radical chains in tropospheric gas phase chemistry:

1. The NO_x radical chain includes no initiation reaction. The nitrogen oxides (NO_x: NO + NO₂) enter the system mainly by emissions from fuel combustion. NO₂ is the precursor of tropospheric ozone.
2. The members of the RO_x/HO_x radical chain reaction system are produced by photolysis.

These two radical chains are connected.

The radical yield of the reaction system is limited by the termination reaction which can include RO₂ and/or HO₂ radicals (forming peroxides), or OH and NO₂ (forming HNO₃). This latter termination reaction links the NO_x and the RO_x radical chains. This kind of termination is more important in strongly polluted air.

The oxygen atoms produced by the photolysis of NO₂ react very quickly with molecular oxygen, forming ozone. Ozone in turn reacts very quickly with NO to form NO₂ again. During sunlight these reactions form equilibrium called photostationary state, and this state is reached within minutes.

There is no net O₃ production in the photostationary state.

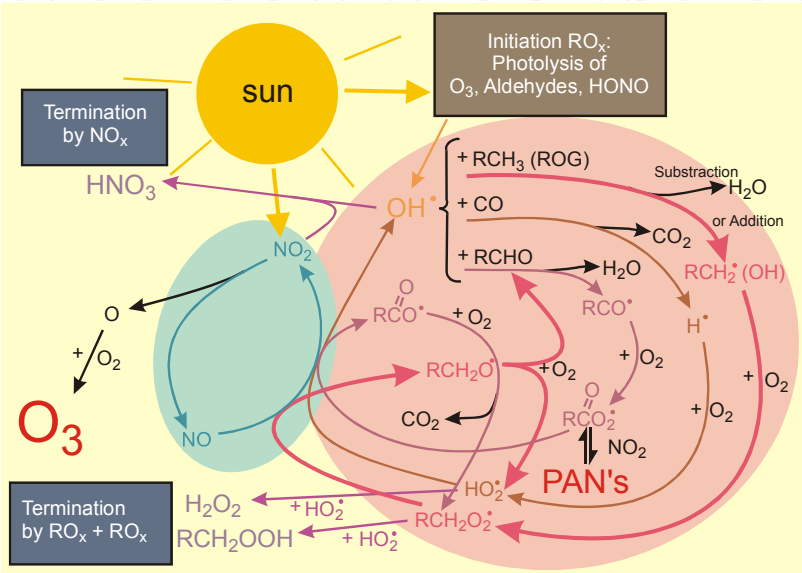
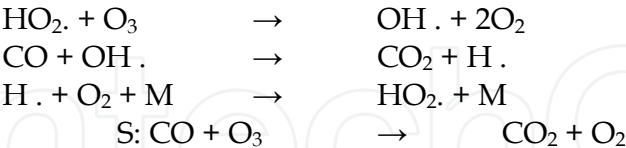
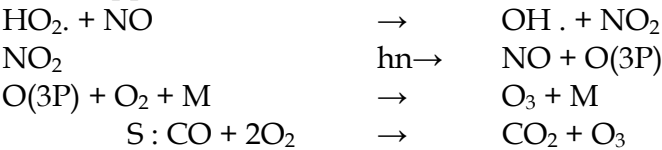


Fig 1. Overview of photochemistry in the polluted planetary boundary layer (from Staehelin et al., 2000)

In case of very low NO_x concentrations ozone is chemically destroyed.
NO less than 10 ppt:



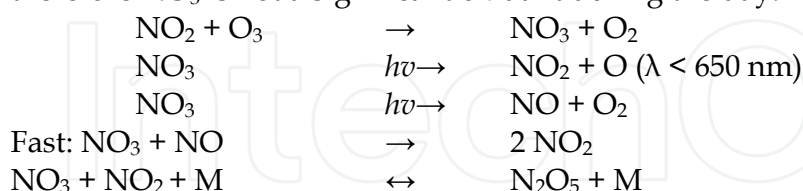
Typically, NO concentrations need to be larger than around 10 ppt for the dominance of the reaction of HO₂ with NO leading to O₃.
NO more than 10ppt:



The dominance of the reaction channel of HO₂ depends on NO as well as on O₃ concentrations.

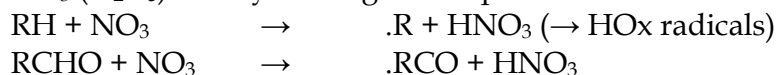
Organic chemistry in the troposphere is very complex (e.g. the reaction of alkenes with O_3 is an additional source of HOx). Precursors of ozone (NO_x , Volatile Organic Compounds and CO) can be of anthropogenic or biogenic origin.

NO_3 is produced from reaction of NO_2 with O_3 . This reaction also proceeds during day, but NO_3 is rapidly photolysed because of its strong absorption in the visible spectrum and therefore NO_3 is not a significant oxidant during the day.



In the absence of sunlight, e.g. during night, no photolysis reactions take place. However, some gas phase oxidation still can proceed via the NO_3 radical.

NO_3 (N_2O_5) loss by heterogeneous processes:



During night, NO_3 is a strong oxidant reacting with some organic compounds in a similar way as OH radicals, but only with specific compounds. NO_3 quickly reacts with NO and NO_2 which limits NO_3 concentrations.

Thus, the main oxidant agent in the presence of solar radiation is OH (its concentration strongly depends on pollution level, but it is around 10^6 cm^{-3}). In absence of solar radiation, main oxidant is NO_3 (concentrations move around $5 \times 10^8 \text{ cm}^{-3}$).

A few compounds (e.g. some reactive alkenes) can be oxidized by O_3 (with mean concentration approximately of 10^{12} cm^{-3}) both during day and night, but only under specific conditions.

Typical sequence of chemical regimes of an air parcel loaded by ozone precursors:

1. Photostationary state: decrease in ozone by reaction with NO.
2. VOC-limitation: O_3 production increases with increasing VOC concentrations. In urban environments NO_2 concentrations are usually that large that HNO_3 formation dominates the reactions of OH radicals, which implies that local O_3 production is small.
3. Transition regime: maximum ozone production. When NO_x concentration is decreasing steadily the mixture of organic vs. NO_x concentration passes through a state in which the ratio of ozone precursor concentration is such that local O_3 production maximizes.
4. NO_x -limitation: When NO_x concentration is decreasing further, local O_3 production rate becomes limited by the availability of NO_x . Such conditions usually occur in rural environments.
5. Ozone destruction

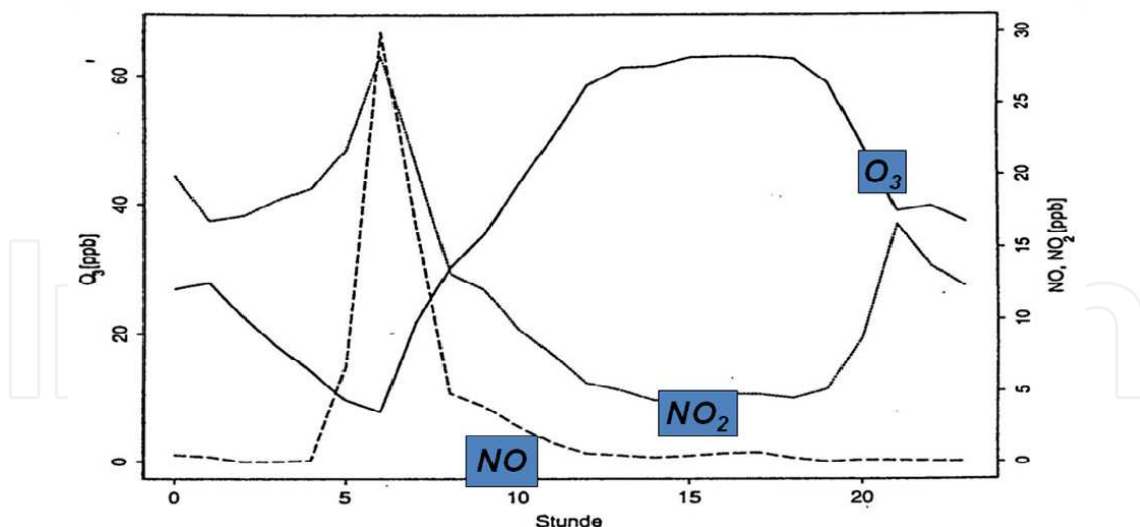


Fig. 2. Diurnal variation of trace gas concentrations at an urban site close to traffic emissions (NABEL station Dübendorf, mean of hourly mean values 18.-12. July, 1996):

- During night an inversion layer inhibits vertical mixing, and the primary air pollutants are emitted from ground below this layer.
- Ozone concentrations decrease during night because of the reaction of NO and O₃ and dry deposition. At this measuring site NO is steadily released from a close traffic source.
- After midnight, the reaction of NO with O₃ yields an increase in NO₂ concentration (traffic dominantly emits NO_x as NO).
- Early in the morning, the close traffic emissions lead to a NO_x maximum and NO increases as well (O₃ concentrations are very small this time).
- Later in the morning the inversion layer breaks, leading to the dilution of primary pollutants and the mixing down of O₃ from the layer lying above. Thus, NO_x decreases while O₃ increases (chemical transformations are not important compared to mixing in this phase).
- Around 20h the inversion layer forms again and the destruction of O₃ by NO begins.

The layer above the nocturnal inversion layer is called reservoir layer. The reservoir layer (which constitutes a part of the planetary boundary layer) is decoupled from the inversion layer. In this layer, O₃ cannot be decomposed because NO emitted from surface is trapped below the inversion layer. Ozone (and other photooxidants) in the reservoir layer can be transported over large distances during night in summer smog episodes. Vertical mixing between the planetary boundary layer efficiently occurs during advective (smog) or convective (in summer) weather conditions.

Photocemistry of polluted air masses is exhaustively discussed by Steahelin et al., 2000.

2.2 Surface ozone concentrations, its measurements and trends

Ozone concentrations recorded in rural areas are higher than those in the city (Gregg et al., 2003). The main reasons of this phenomenon are the following:

- Since ozone is not a directly emitted pollutant, a considerable fraction of it is formed far away from its precursor sources.
- Nitrogen oxides leading to ozone depletion in the city's polluted atmosphere.
- In rural areas, biogenic VOCs (hydrocarbons and other organic trace gases) may contribute to ozone formation.

Daily maximum ozone values occur around midday, yearly peaks are at spring (during May) in the Northern Hemisphere while in the Mediterranean, the highest concentrations occur from June to August (Paoletti, 2006).

Sources of background O₃:

- Transport from stratosphere
- Local ozone production through NO_x reactions with methane above wetlands. NO_x sources in this case are flashes of lightning, soil emissions and downward transport from stratosphere.
- Local ozone production through NO_x reactions with biogenic VOCs.
- Long-range transport of polluted air masses.

Higher sites have atmosphere with higher ozone values, because lack of significant air mixing and higher transport of stratospheric ozone (Paoletti, 2007).

In the Northern Hemisphere, annual average ozone concentrations range between 20 and 45 ppb. By the year 2100, values are predicted to be between 42 and 84 ppb (Vingarzan, 2004).

Over the past three decades, background levels have been rising by 0.5-2% per year (Midgley et al, 2002). Although peak values are generally decreasing (Midgley et al, 2002) background values, that are increasing, have a larger impact on vegetation (Grennfelt, 2004).

Although already Schönbein, the discoverer of ozone (Schönbein 1844) developed a method in 1842 to show that O₃ is present in ambient air, this type of method is (quantitatively) not reliable. (At the time, mean values were about 10 ppb (Anfossi and Sandroni, 1994).) For the detection of ozone, Schönbein used impregnated papers which change color when exposed to ozone. This method was widely used in the 19th century.

From 1876 to 1911 ozone was measured by a chemical method using arsenite in the observatory of Montsouris. However, this method is susceptible to interference with sulfur dioxide and the representativeness of the measurements with respect to local influences is also questionable.

Around the end of World War II it was discovered that ozone could be produced in the troposphere by photochemical air pollution (Haagen-Smith, 1952).

In the 1930s, single measurements of O₃ close to Earth's surface were performed by (open path) spectroscopy. (Compared with this earlier measurements, ozone values measured at the same site in the period of 1989-1991 show more than a twofold increase.)

Chemical measurements have been widely used until the 1970s. Ozone measured by this method is also affected by interference with SO₂, and therefore only background measurements are sufficient for trend analysis (Staehelin et al. 1994). This method using electrochemical detection is applied for ozone profile measurements from light balloons (ozone sondes). A network of ozone sonde stations has been operating since the late 1960s providing a unique data set to document long-term tropospheric ozone changes (e.g., Logan et al. 1994). Different sensors have been developed over time (showing systematic

differences). The quality of the data gained from old ozone sonde measurements is not reliable.

O₃ measurements were made in the 1950s at the Alpine village Arosa and several places in the north of the Alps. Comparison of these results with the results of measurements made in the period of 1989-1991 confirms that ozone values doubled during these 40 years all over Europe. Similar changes have been demonstrated in ozone concentrations in the marine boundary layer in the West coast of North America and Mace Head (West coast of Ireland), and at Montsouris, which is close to Paris.

This increase in background ozone concentrations in this period is probably caused by a significant increase in ozone precursor emissions in the decades following World War II.

Measurements of the European ozone sonde stations show large increases in free tropospheric ozone from the early 1970s to the 1990s (5–25% per decade during 1970–1996 Logan et al. 1994).

Today it is well known that high ozone concentrations occur all over the world.

Reliable ozone measurements can be obtained by UV absorption using the Hg emission line at 253.7 nm. This method is nowadays commonly used in ozone monitoring (e.g., Klausen et al. 2003). Data from continuous ozone measurements are available from an increasing number of stations, but that data are not every time useful for long-term trend analysis from remote sites. The method is also used to measure ozone from air planes, as well as from ships. The extended datasets provided by the MOZAIC (Measurement of Ozone and Water Vapour by Airbus In-Service Aircraft) and the earlier GASP program (Global Atmospheric Sampling Program, 1975–1979) are valuable for trend analysis.

Ozone is a precursor of OH-radical which limits the tropospheric lifetimes of many important gaseous species such as methane. Ozone is also an important greenhouse gas: its increase has significantly contributed to changes in radiative forcing. Determining this anthropogenic radiative forcing by tropospheric ozone is difficult, since its complex formation reactions need to be described by complex numerical simulations of the tropospheric ozone cycle.

To understand tropospheric ozone trends, they need to be compared with changes in anthropogenic ozone precursor emissions. Emission models rely on the description of anthropogenic activities leading to emission factors that describe the type of technology. Emissions of society depend on economy, and due to economic growth, all emission models show large increases in the period following World War II. Due to the abatement legislation, anthropogenic emissions of developed countries stabilized and decreased after the 1980s, while the emissions of developing countries still increased during the 1990s (Staehelin and Poberaj, 2008). However, different emission models show considerable differences demonstrating uncertainties in data processing.

Since 1992, ozone concentrations measured at high mountain sites in the northern extratropics, have increased further (Brönnimann et al. 2002). Since anthropogenic ozone precursor emissions have decreased in Europe and North America since the early 1990s, these increases are difficult to explain. Within the MOZAIC project ozone has been continuously measured since 1994. These measurements show a considerable increase in upper tropospheric and lower stratospheric ozone which extends over much of the northern extratropics (Thouret et al. 2006).

A similar increase in ozone concentrations has been found at Mace Head, a station at the west coast of Ireland (Simmonds et al. 2005). All measurements support that ozone trends

are most pronounced in winter. Ozone sonde measurements in Europe do not accord with the data showing these increases, possibly because limitations in data quality (Ordóñez 2006).

As discussed in the literature (Staehelin and Poberaj, 2008), different causes for this remarkable increase can be:

- effects of more frequent biomass burning
- changes in transport of air masses over the Atlantic in association with changes of the North Atlantic Oscillation (and Arctic Oscillation)
- influence of the strongly increasing emissions from South East Asia
- changes in the transport of ozone from the stratosphere

Indeed, during the 1990s, ozone substantially increased in the lowermost stratosphere at northern midlatitudes. Strong correlations have been showed between the ozone anomalies in the lowermost stratosphere and ozone concentrations measured at three European high mountain stations in the 1990s (Ordóñez et al. 2007). There are several data from all over the world, with temporal trends which are difficult to explain by changes in anthropogenic ozone precursor emissions. This temporal change in upper tropospheric ozone was similar to the changes observed in the lowermost stratosphere (Staehelin and Poberaj, 2008).

These facts suggest that long-term tropospheric ozone trends are considerably influenced by changes in ozone in the lowermost stratosphere (Tarasick et al. 2005; Ordóñez et al. 2007). Probably, there is a major contribution of an increased flux of ozone from the stratosphere to the troposphere to the 1990's increase in Europe's background ozone concentrations.

However, present chemical transport models have problems to adequately describe the influence of stratosphere-troposphere exchange.

In the tropics, upward trends were reported from long-term measurements from ship cruises over the Atlantic for 1978–2004. In the measurements of the MOSAIC project (starting in 1994), twice as large increases have been found for the free tropical troposphere over the Atlantic. In both case, these large increases were attributed to increasing fossil-fuel emissions in the Atlantic regions.

Surface-ozone measurements from Hawaii (starting in 1974) and ozone sonde measurements from Hilo (starting in 1982) show moderate increases. Data analysis provided evidence that similarly to the northern extratropics, the most probably primary cause of this increase is the change in the origin of air (Oltmans et al. 2006).

In the southern extratropics, ship measurements also show upward near-surface trends in the Southern midlatitude Atlantic region, although these trends are less pronounced than in the tropics. The only available sonde station in New Zealand shows a continued increase in the middle troposphere since 1986, which is qualitatively similar to the surface ozone increase reported from the long-term stations Cape Grim (Australia) and Cape Point (South Africa). Interestingly, the temporal evolution of surface ozone concentration at the South Pole shows a continuous decrease between the middle of the 1970s and the middle of the 1990s. This decrease is later followed by an increase (Staehelin and Poberaj, 2008).

However, according to recent studies, in the Arctic, there are special processes that evaluate ozone concentrations.

Because of the lack of available reliable long-term measurements, it seems premature to draw overall conclusions for the tropical regions as well as the southern midlatitudes (Staehelin and Poberaj, 2008).

Increases in ozone levels in the future are predicted to be larger in developing countries (Naja and Akimoto 2004; The Royal Society, 2008).

3. Phytotoxic effects of ozone

Current tropospheric O₃ concentrations are considered a toxic threat to vegetation (Ashmore, 2005).

Based on ozone emissions of the year 2000, ozone-induced crop yield loss for 23 crops was estimated to be around €6.7 billion per year (Harmens et al., 2006).

A database named OZOVEG (Ozone effects on vegetation) was established based on data collated from over 60 papers. On the grounds of this database, a model was developed that uses Ellenberg light and salinity values (Ellenberg et al., 1991) for predicting ozone sensitivity of particular species as well as of whole plant communities.

Using the European Nature Information System (EUNIS) Dry grasslands, Mesic grasslands, Seasonally-wet and wet grasslands, Woodland fringes, Alpine and subalpine grasslands and Temperate shrub heathlands were identified as potentially ozone sensitive.

Studies made to better understanding (Harmens and Mills, 2005)(Harmens et al., 2006) concluded that the response of vegetation to ozone and climate change is driven by complex interactions between several abiotic and biotic factors and making predictions is difficult (Harmens et al., 2006). There is a clear need for an approach that combines drivers when examining vegetation response to climate change. Long-term multifactorial field experiments and modelling that takes into account several climate change factors should be made.

The estimation of cause-effect relationships has to be more adequate when based on the amount of ozone entering the leaf tissues instead of being based on the amount of ozone present in ambient air (Ashmore et al., 2004).

Stomatal ozone uptake (flux-based approach) is modelled on the basis of maximum stomatal conductance values, taking into account the effects of several climatic and environmental parameters. Comparing with the concentration-based approach (Paoletti and Manning 2007), it is more precise since it includes environmental conditions that affect plant's ozone response. However, flux-based methods are species-specific, with the need of parametrisation for every particular investigated species (Paoletti et al, 2007). Considering estimations with the flux-based approach, risks are shown to be slightly lower (Baumgarten et al., 2009). Flux-based indices are considered to be more appropriate than exposure-based indices (Karlsson et al., 2009 Fredericksen et al., 1996; Karlsson et al., 2003; Matyssek et al., 2004; Pleijel et al., 2004).

The latest approach is the usage of dose-response models. This approach also needs parametrisation for certain species (Fernandez et al., 2010; Calvo et al., 2010).

The phytotoxic effect of ozone is commonly introduced through a description of stomatal behaviour based on plant's transpiration (Baldocchi et al., 1987; Meyers et al., 1998; Simpson et al., 2003). However, the contribution of non-stomatal sinks to the total ozone removal at the canopy scale can be on the order of 50% - 70%.

Also, at the shoot scale, several measurements revealed depositions exceeding the predictions based on the stomatal uptake (Rondón et al., 1993; Altimir et al., 2004) (van Hove et al., 1999). This non-stomatal deposition is a major unknown in present understanding of gas-exchange, which compiles heterogeneous chemical processes. These

processes can be reactions between ozone and Volatile Organic Compounds or nitrogen oxides emitted by the soil (Duyzer et al., 1983; Pilegaard, 2001)(Kurpius and Goldstein, 2003; Goldstein et al., 2004; Mikkelsen et al., 2000). Foliage surfaces can also sustain ozone removal through photochemical reactions or thermal decomposition of ozone on the leaf surface (Rondón et al. 1993; Coe et al. 1995; Fowler et al. 2001). Wetness of foliar surfaces and its relationship with deposition of gases has been discussed in many studies (Massman, 2004; Brewer and Smith, 1997). The foliage surface's ozone removal processes, such as scavenging reactions (in addition to stomatal uptake) are possibly controlled by several environmental factors, but it is difficult to determine the most important among these factors.

According to a study made on Scotch pine shoots and canopy in Finland (Altimir et al., 2005), ozone total deposition enhances when moist conditions occur. During moist conditions, only half of the measured ozone removal is attributable to the stomatal deposition at the shoot scale. This proportion is much higher in case of dry conditions. Among several analysed environmental factors, relative humidity was found to show the clearest correspondence with the estimated non-stomatal sink. However, this correspondence was only present when relative humidity was higher than 70%, a threshold at which surface moisture gathers at the foliage surface. This suggests that the non-stomatal sink is modulated by the foliage surface films. Moisture plays an enhancing role of ozone deposition. A part of the flux can only be explained by moisture film formation at the foliage surface. Total deposition, as well as the estimated non-stomatal deposition corresponds with *RH* rather than with temperature, at least when *RH* is over 60-70%. Thus, the portion of ozone deposition that the stomatal uptake cannot account for is related to the ambient *RH*. Possible explanation of this phenomenon is that ozone reacts with the liquid films on the foliage surface.

There is a not negligible contribution of nocturnal ozone uptake, which is often assumed to be zero during estimates of ozone uptake. Stomatal closure can be incomplete at night, even if discussing C3 plants. In addition, the enhancing effect of *RH* is more prominent at night.

According to several studies, forestal ecosystems are at risk (Paoletti, 2007 Baumgarten et al., 2009, Paoletti et al., 2007), being the thresholds of both flux-based and exposure-based O₃ indices already exceeded and estimated to increase further in the future. Based on observed biomass losses and changes in ecosystem carbon-balance impairment carbon-sink strength of the forests of the Northern Hemisphere is found to be reduced by ambient ozone levels, and this reduction is predicted to be more serious in the future (Witting et al., 2009). Visible ozone injuries were observed in 55% of 67 forestal monitoring sites in an European ozone monitoring experiment (ICP Forests)(Lorenz et al., 2005). Direct ozone effects have been estimated to reduce forest productivity by 1-10% (Chappelka and Samuelson, 1998).

In a subalpine grassland ecosystem, respiration rates and gross primary production decreased under elevated O₃. The 8% O₃ effect on GPP indicated impairment of the photosynthetic system. However, this decrease did not alter seasonal C balance. The reason is that in this ecosystem most of the biomass is in belowground, providing stable resource of new photosynthetic canopy (Volk et al., 2010).

In a long-term experiment in Lithuania, strong positive correlation was found between AOT40 (accumulated doses over 40ppb) values and defoliation of *Fraxinus excelsior* as well as the proportion of healthy individuals of several investigated tree species. The experiment

showed the deciduous tree species to be more sensitive than conifers (Girgždienė et al., 2009). Species-specific responses to ozone as well as impairment of soil nutrient balance in polluted areas affect the competition of forest ecosystems and its biodiversity (Paoletti, 2007). In general, chances of poor competitors are weakened (McDonald et al., 2002).

The risk is also present regarding cultivated crops. Not only the quantity, but the quality of crops changes as an effect of ozone pollution. Chemical composition (lignin and phenolic concentrations, protein content) in rice straw was demonstrated to change as a result of elevated ozone concentration. This changes mean reduced digestibility and feed intake, on the whole, reduced quality of this kettle feed (Frei et al., 2010).

According to Karlsson et al. (2009), ambient ozone levels cause 2%-10% reduction in growth of trees and up to 15% reduction in crop's yield in Sweden. Visible injuries on bioindicator plants were observable. The relatively large ozone impacts in spite of relatively low ozone levels in the Northern hemisphere were explained by that the humid climate promoted high ozone uptake of leaves.

The effect of ozone is similar to several other stresses, triggering ethylene emission, stress-related gene transcription and major plant defence systems such as programmed cell death (Sandermann, 1996). Ozone injury mainly occurs in the mesophyll tissue. Stomata and epidermal cells resist until the plant's total necrosis (Hill et al., 1961).

The initial effect of ozone is the destruction of cell membranes (Heath, 1980). Beyond degradation of photosynthetic membranes, ozone-induced impairment of photosynthesis is attributed to decline in carboxylation efficiency, the electrontransport system, the synthesis and activity of Rubisco (Pell et al., 1991), and changes in carbon-dioxid supply because of changed stomatal function (although the exact processes of these changes are not clearly understood) (Paoletti and Grulke, 2005).

Effects of ozone and ozone injuries are highly similar whatever the species. In the field, injuries occur after sunny periods, particularly at the light exposed parts of light exposed plants. Broadleaved trees show intervenial bronzing and stippling, reddening, stippling and bleaching. Most severe injuries are shown on palisade parenchyma cells (Vollenweider et al., 2003), that are undergoing HR-like reaction (reaction similar to Hypersensitive Reaction). The surrounding tissues show ACS (accelerated cell senescence) and OS (oxidative stress) (Pellinen et al., 1999).

Cell walls form protrusions including pectin, polyphenolic or protein material (Günthardt-Goerg, 1996; Günthardt-Goerg et al., 1996). Such symptoms also appear in shaded and asymptomatic leaves if exposed to high ozone concentrations (Vollenweider et al., 2003). The cell wall generally thickens and its thickness becomes irregular (Vollenweider et al., 2003); the formation and allocation of starch declines and also becomes irregular in symptomatic tissues (Günthardt-Goerg et al., 1998).

Symptoms of conifers are mottling and bleaching (Günthardt-Goerg and Vollenweider, 2001) that are very similar to those in broadleaved species (Dalstein et al., 2002; Vollenweider et al., 2003). The injured cells have larger vacuolium, more nucleus condensations and less and smaller chloroplasts, discrete groups of dead cells with apoptotic-like bodies. Bronzing (caused by condensed tannins) (Vollenweider et al., 2003) cannot be observed in conifer species (Günthardt-Goerg* and Vollenweider, 2006).

Ozone most significantly affects the regulatory capacity of resource allocation, it alters source-sink balance decreasing below-ground carbon allocation (Andersen 2003). As a

defence reaction, plant's stomatal conductance is reduced when exposed to ozone. The direct reason of stomatal closure might be a reaction to an increased internal CO₂ concentration due to inhibited C assimilation (Paoletti and Grulke 2005). Ethylene emission and changed ion fluxes can also cause stomatal closure (Kangasjarvi et al., 2005), but it can be caused by direct O₃ effect on guard cells (Moldau et al., 1990).

However, above a certain concentration or after a certain time period ozone may impair stomatal control, causing sluggish stomatal response (Paoletti and Grulke 2005) and finally incomplete stomatal closure (Paoletti, 2005) which leads to lost control on transpiration. Increased nocturnal transpiration as a result of ozone exposure has been reported in several studies (Grulke et al., 2004, 2007). Ozone also increase sap-flow. Thus, in general, through its effect on stomata, ozone predisposes trees to drought stress (Paoletti, 2007).

As an ozone effect, stomatal density has been shown to increase (Paoletti and Grulke, 2005; Hetherington and Woodward, 2003) but with decreased stomatal or aperture size (Aasmaa et al., 2001; Paakkonen et al., 1997).

In trees, biomass production decreases rather through reduced leaf size and premature leaf loss than because of declined photosynthesis (Matyssek 2001).

In the Aspen-FACE experiment, where different tree species were exposed to elevated CO₂ contemporarily with elevated O₃ levels, 14%-18% decrease in growth of birch and a significant decrease of growth of maple trees were seen when exposed to both gases compared with plants grown only under elevated CO₂ (Karnosky et al., 2005).

Exposure to ozone affects flowering in several species (Black et al., 2000; Darbah et al., 2007).

As ozone decreases plant productivity, more CO₂ accumulates in the atmosphere, resulting indirect radiative forcing. This indirect effect may have larger contribution to global warming than the direct radiative forcing caused by increases in ground-level ozone concentrations (Stich et al., 2005; Paoletti, 2007).

4. Bioindication of ozone

Bioindicator plant species are species with high sensitivity to ozone. This sensitivity is manifested in changes in physiological parameters, biomass reduction and the appearance of specific visible symptoms when exposed to high levels of ozone. According to the extent of these injuries, conclusions can be drawn regarding the presence (and, for some extent, the amount) of ozone in the atmosphere of the site where the plants are exposed to ambient air. In addition, ozone bioindicator plants are widely used in researches aiming to clarify plant's response to the stressor, or, in general, to oxidative stress. Reduction in biomass of sensitive clones as an effect of ozone is also a widely investigated indicative feature of biomonitoring plants.

There are a range of plants that were proved to be sufficient for demonstrate ambient ozone levels. Most important are *Nicotina Tabacum* var. Bel W 3 (applied together with the resistant Bel B clone); *Phaseolus vulgaris* var. Pinto; *Urtica urens*; *Spinacia oleracea* Var. Monnopa (Arndt et al. 1985); *Populus x euramericana* var. Gelrica (Arndt et al. 1992) as well as wheat, mallow and clover (Schafler, 1998).

Tobacco plants have been used for ozone bioindication in Europe since the early 1960's. This species is highly sensitive to ozone, chlorotic spots on its leaves appear even under O₃ concentrations of 40ppb. After being exposed to ozone for a relatively short time period,

large necrotic patches are formed, finally whole leaves wither (Müллер et al., 1992). Since its oversensitivity, *Nicotiana tabacum* is only usable if applied together with another bioindicator species. Symptoms on tobacco plants soon become so expansive that no differences can be seen between extents of injuries on different individuals (Keitel, A. 1989). In spite of these disadvantages, tobacco has been used for ozone biomonitoring even in long-term experiments (Nali et al., 2006). It was demonstrated, that extent of ozone injuries on tobacco leaves is highly informative as regards the amount of ozone in ambient air (Ribas and Penuelas, 2002).

The white clover system was developed by Heagle et al. in 1995. Between 1996 and 2008 participants of the International Cooperative Programme on Effects of Air Pollution on Vegetation (ICP-Vegetation) have detected and evaluated effects of ozone on sensitive and resistant clones of *Trifolium repens* across Europe and in the USA. Initially, biomass ratio of the two clones was investigated, visible symptoms gained more attention only later (Harmens et al., 2006). Analysis of data of this long-term clover biomonitoring experiment is presented in Harmens et al. (2004) and Harmens et al. (2005).

Several individual studies were carried out using the clover system (e.g. Postiglione et al., 2000; Karlsson et al., 2002). Using the ICP-protocol, an investigation of the effect of ozone on the clover system was carried out during 1997 and 1998 at the Ruhr Valley (Köllner and Krause, 2002). Foliar injuries, protein content and biomass ratio were evaluated. This study found visible injuries on clover clones to be better bioindicator features than biomass ratio if ozone values at the experimental site are relatively low, or if the aim is to determine early ozone effects. Protein content of sensitive plants was reduced shortly after high level ozone periods.

Although visible ozone injuries are not eligible for exact quantitative estimations of ozone levels, sometimes very good relationships are shown between the extent of injuries on O₃ sensitive clones and ozone doses in ambient air (Mills et al., 1999b; Ribas and Penuelas, 2002).

Since its identification as relatively ozone-sensitive species (Buse et al., 2003a), *Centaurea jacea* has been used as bioindicator. In 2002, ozone biomonitoring experiments of the ICP-Vegetation have been conducted using seeds of sensitive and resistant clones of this species (Harmens et al., 2006).

Evaluation of ozone symptoms is easier on large leaves. Thus, since 2008, the ICP-Vegetation Programme uses sensitive and resistant clones of *Phaseolus vulgaris* as a new bioindicator system. Bean lines used in this system were first reported by Reinert and Eason (2000), and tested by Burkey et al. (2005).

Although there are several ozone biomonitoring systems operating with sensitive and resistant clone pairs of bioindicator plant species, there are uncertainties in understanding physiological background of ozone sensitivity. Crous et al. (2006) studied the physiological differences between sensitive and resistant clones of widely used bioindicator clover. The experiment has represented that with the exception of chlorophyll content (which is originally higher in resistant plants), physiological parameters of the two clones differ only after ozone exposure. Ozone resulted changes in physiological parameters of the sensitive plants. While resistant clone showed no response to cumulative uptake of high ambient ozone (CUO₃), sensitive clone reacted with decline of most investigated gas exchange parameters (e.g.: net photosynthesis and carboxylation capacity). Stomatal conductance of the two clones differed only after being exposed to ozone: after an initial increase during

lower ozone concentrations, stomatal conductance of the resistant clone significantly decreased. While maintaining higher photosynthesis, resistant clone showed higher non-photochemical quenching. This means that sensitive clone is more vulnerable to potentially generating reactive oxygen species that are harmful for cell membranes likely leading to visible symptoms. It has been concluded that the ozone resistance is based on stomatal function and the capacity of non-photochemical quenching. Physiological dysfunction may occur before visible symptoms develop (Pye, 1988; Fredericksen et al., 1996; Guidi et al., 2001).

5. Results of three year’s Slovenian-Hungarian biomonitoring experiment

Experiments with two ozone bioindication plants (*Trifolium repens* r. cv. Regal and *Phaseolus vulgaris*) were conducted in a Slovenian and two Hungarian experimental sites.

Ljubljana (altitude: 320 m; average annual temperature: 11,4°C; yearly average precipitation: 1400 mm) is Slovenia’s capital with significant public traffic.

Gödöllő (altitude: 249 m; mean annual temperature is between 9°C and 10°C; yearly average precipitation: 560 mm;) is a small town which is only 25 kilometers far from Budapest, so it must be affected by the pollutants of the capital city.

Szurdokpüspöki (altitude: 350 m; average annual temperature: 10,2°C; yearly average precipitation is 620 mm) is located in a rural environment in the Mátra mountains.

As it could be expected, Ljubljana had the lowest ozone concentrations among the three sites all over the three-year-long period between 2007 and 2009.

For planting and evaluating of ozone injuries we used the experimental protocol of the ICP-Vegetation (Hayes et al., 2006).

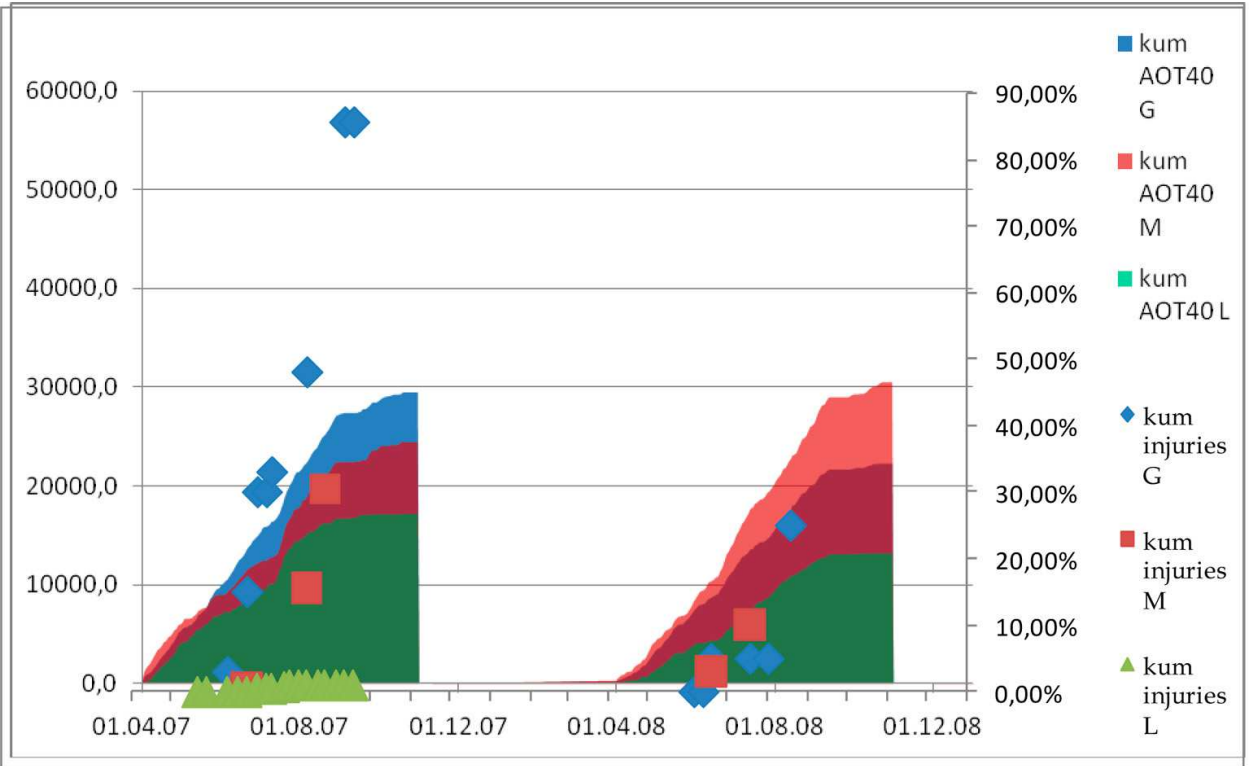


Fig 3. Two year’s cumulative AOT40 values and results of ozone injury assessments on clover clones (Gödöllő-G; Mátra mountain-M; Ljubljana-L)

Ozone concentrations, ozone injuries, dry weight of clover plants and dry weight of bean's pods, number of pods were measured and evaluated.

On the base of three year's experiences in biomonitoring with the two species, we were trying to find out if bean plants were more suitable for this purpose than the clover clones.

Ozone symptoms on sensitive clover clones showed closer connection with AOT 40 values than on bean plants. Dry weight of the sensitive and resistant clones did not differ significantly; they seem to show connection with meteorological conditions rather than with ozone burden, as the dry weight of all experimental plants showed significant differences among the different sites, but these differences did not correspond with the differences in ozone values.

Neither the differences in ozone symptoms nor the dry weight of pods of ozone sensitive bean plants reflected the differences of ozone burden of the experimental sites.

Although the dry weight of pods on ozone sensitive bean strains usually remained under that on the resistant strains, this difference did not seem to have any connection with the AOT40 values. Supposedly, this is a genetic difference between the two strains in addition to but not in connection with their different reactions to ozone.

Regarding the usefulness in ozone bioindication, clover clones proved to be more valuable than bean strains. Not only had the injuries of clover clones closer connection with AOT40 values than that of the bean strains.

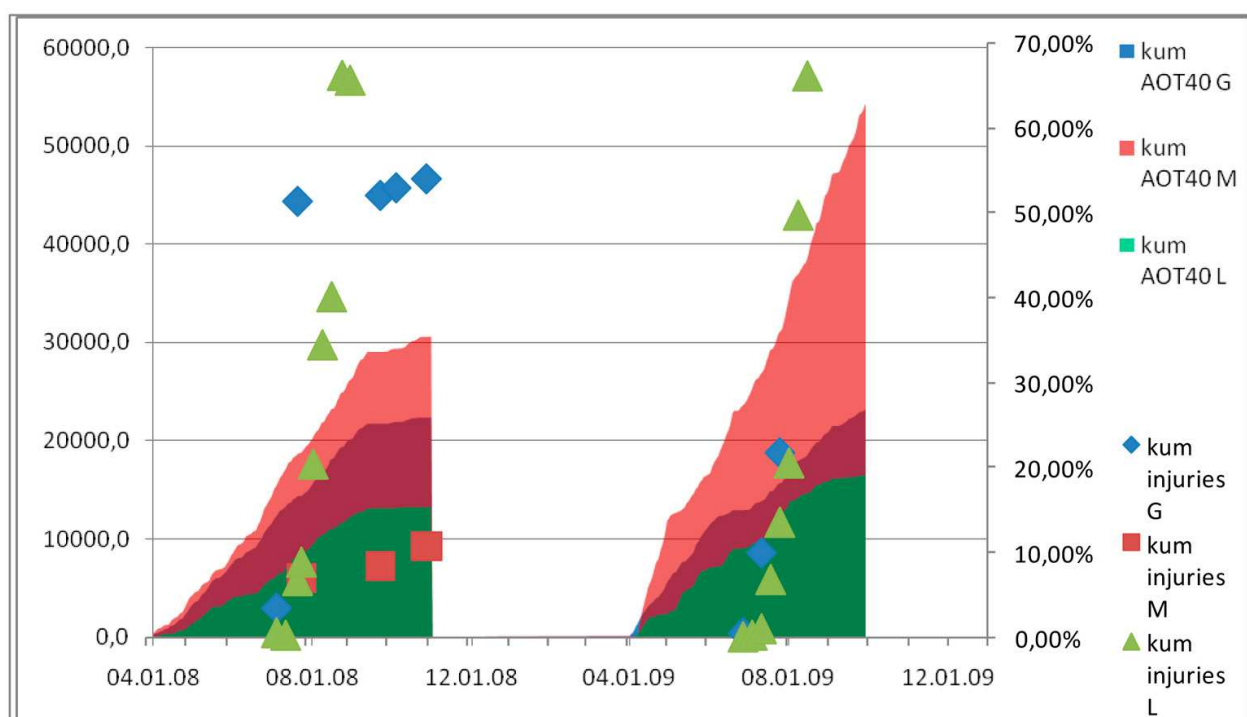


Fig 4. Two year's cumulative AOT40 values and results of ozone injury assessments on bean clones (Gödöllő-G; Máttra mountain-M; Ljubljana-L)

Comparing the bioindicator values of number of flowers on clover clones and number or dry weight of pods on bean strains, the clover clones again have appeared to be more useful. In addition, maintenance of clover clones is easier; bean plants are much more sensitive to other environmental stresses such as drought and high solar radiation which makes the experiments more complicated and their outcome more doubtful.

6. References

- Aasamaa K., Sober A., Rahi M. (2001): Leaf anatomical characteristics associated with shoot hydraulic conductance, stomatal conductance and stomatal sensitivity to changes of leaf water status in temperate deciduous trees, *Australian Journal of Plant Physiology* Vol 28, pp.765–74.
- Altimir N., Kolari, P., Tuovinen, J.-P., Vesala, T., Bäck, J., Suni, T., Kulmala, M. and Hari P. (2005): Foliage surface ozone deposition: a role for surface moisture? *Biogeosciences Discussions*, Vol 2, pp.1739–1793.
- Altimir, N., Tuovinen, J.-P., Vesala, T., Kulmala, M. and Hari, P. (2004): Measurements of ozone removal to Scots pine shoots: calibration of a stomatal uptake model including the non stomatal component, *Atmospheric Environment*, Vol 8, pp.2387–2398.
- Andersen, C.P. (2003): Source–sink balance and carbon allocation below ground in plants exposed to ozone, *New Phytologist* Vol 157, pp.213–28.
- Anfossi D., Sandroni S. (1994): Surface ozone at mid latitudes in the past century *Il Nuovo Cimento* Vol 17, pp.199–208.
- Arndt, U., Brausam-Schmidt, C., Geiger, B., Nobel, W. (1992): Methodische Arbeiten zur Verwendung des Pappelklons *Populus x euramericana* var. *Gelrica* als Bioindikator für Ozonbelastungen. In: Köhler, J., Arndt, U.: Bioindikatoren für Umweltbelastung – Neue Aspekte und Entwicklungen. Hohenheimer Umwelttagung–Verlag pp. 199–206.
- Arndt, U., Erhardt, W., Keitel, A., Michenfelder, K., Nobel, W., Schlüter, C. (1985): Standardisierte Exposition von pflanzlichen Reaktionsindikatoren, *Staub – Reinhaltung der Luft* Vol 45, Issue 10, pp. 481–483.
- Ashmore, M. R., Emberson, L. D., Karlson, P.-E., and Pleijel, H. (2004): A new generation of ozone 25 critical levels for the protection of vegetation in Europe, *Atmospheric Environment*, Vol 38, pp.2213–2214.
- Baldocchi, D., Hicks, B.B., and Camara, P. (1987): A canopy stomatal resistance model for gaseous deposition to vegetated surfaces, *Atmospheric Environment*, Vol 21, pp.91–101.
- Baumgarten, M., Hubera, C., Büker, P., Emberson, L., Dietrich, H-P., Nunne, A. J., Heerdtf, C., Beudertg B. and Matysseke, R. (2009): Are Bavarian Forests (southern Germany) at risk from ground-level ozone? Assessment using exposure and flux based ozone indices, *Environmental Pollution* Vol 157, Issue 7, pp. 2091–2107.
- Black, V.J., Black, C.R., Roberts, J.A., Stewart, C.A. (2000): Impact of ozone on the reproductive development of plants, *New Phytologist* Vol 147, pp.421–47.
- Brewer, C. A., and Smith, W. K. (1997): Patterns of leaf surface wetness for montane and subalpine plants, *Plant, Cell and Environment* Vol 2, pp.1–11.
- Brönnimann, S., Buchmann B., and Wanner, H. (2002): Trends in near surface ozone concentrations in Switzerland, *Atmospheric Environment*, Vol 36, pp.2841–2853.
- Burkey, K.O., Miller J.E., and Fiscus E.L. (2005): Assessment of ambient ozone effects on vegetation using snap bean as a bioindicator species, *Journal of Environmental Quality* Vol 34, pp.1081–1086
- Buse, A., Mills, G., Harmens, H., Büker, P., Hayes, F., Williams, P., Emberson, L., Cinderby, M., Ashmore, S., Holland, M. and the participants of the ICP Vegetation (2003). Air pollution and vegetation. Annual report 2002/2003

- Calvo, E., Bermejo, V., Gerosa, G., Alonso, R., Calatayud, V., Marzuoli, R. (2010): Preliminary ozone dose-response function for tomato in the Mediterranean area, in: 23rd Task Force Meeting 1 – 3 February, 2010 Tervuren, Belgium Programme&Abstracts pp.30.
- Chappelka A.H., Samuelson L. (1998): Ambient ozone effects on forest trees of the eastern United States: a review, *New Phytologist* Vol 139 pp.91–108.
- Cinderby, S., Emberson, L.D., Ashmore, M.R., Büker, P., Terry, A.C. (2005): Harmonisation of land cover mapping, in: UNECE Workshop Report “Critical levels of ozone: further applying and developing the flux-based concept”, Obergurgl, Austria, 15-19 November, 2005.
- Coe, H., Gallagher, M. W., Choularton, T. W., and Dore, C. (1995): Canopy scale measurements of 25 stomatal and cuticular O₃ uptake by Sitka spruce, *Atmospheric Environment*, Vol 29, pp.1413–1423.
- Crous, K. Y., Vandermeiren, K., Ceulemans, R. (2006): Physiological responses to cumulative ozone uptake in two white clover (*Trifolium repens* L. cv. Regal) clones with different ozone sensitivity, *Environmental and Experimental Botany* Vol 58, pp.169–179.
- Dalstein, L., Vollenweider, P., Vas, N., Günthardt-Goerg, M.S. (2002): L’ozone et les conifères du Sud-Est de la France, *Forêt méditerranéenne* Vol 23, pp.105–116.
- Darbaj J.N.T., Kubiske M.E., Nelson N., Oksanen E., Vaapavuori E., Karnosky D.F. (2007): Impacts of elevated atmospheric CO₂ and O₃ on paper birch (*Betula papyrifera*): reproductive fitness, *The Scientific World Journal* Vol 7(S1) pp.240–6.
- Duyzer, J. H., Meyer, G. M., and van Aalst, R. M. (1983): Measurements of dry deposition velocities of NO, NO₂ and O₃ and the influence of chemical reactions, *Atmospheric Environment*, Vol 7, pp.2117–2120.
- Ellenberg, H., Weber, H.E., Düll, R., Wirth, V., Werner, W., Paulissen, D. (1991): Zeigerwerte von Pflanzen in Mitteleuropa, *Scripta Geobotanica* Vol 18, pp.1–248.
- Fagnano, M., Maggio, A. (2008): Evidence of Widespread Ozone Damage to Vegetation in Europe (1990–2006) Ozone Risk Assessment for European Vegetation *Italian Journal of Agronomy* Vol 1, pp.3–5.
- Fowler, D., Flechard, C. R., Cape, J. N., Storeton-West, R. L., and Coyle, M. (2001): Measurements of ozone deposition to vegetation quantifying the flux, the stomatal and non-stomatal components, *Water, Air and Soil Pollution* Vol 1, pp. 63–74.
- Fredericksen, T.S., Skelly, J.M., Steiner, K.C., Kolb, T.E., Kouterick, K.B. (1996): Size-mediated foliar response to ozone in black cherry trees, *Environmental Pollution* Vol 91, pp.53–63.
- Frei M., Kohno Y., Makkar H.P.S., Becker K. (2010): The effect of elevated tropospheric ozone on the feeding value of rice straw in: 23rd Task Force Meeting 1 – 3 February, 2010 Tervuren, Belgium Programme&Abstracts pp.32.
- Girgždienė, R., Serafinavičiūtė, B., Stakėnas, V. and Byčėnkienė, S. (2009): Ambient Ozone Concentration and Its Impact on Forest Vegetation in Lithuania *Rasa, A Journal of the Human Environment* Vol 38, Issue 8, pp.432–436.
- Goldstein, A. H., McKay, M., Kurpius, M. R., Schade, G. W., Lee, A., Holzinger, R., and Rasmussen, R. A. (2004): Forest thinning experiment confirms ozone deposition to forest canopy is dominated by reaction with biogenic VOCs, *Geophysical Research Letters* Vol 31, L22106

- González F.I., Bermejo V., González A, de la Torre D., López A., Serra J, Elvira S., Sanz J, Gimeno B.S., Alonso R. (2010): On the application of the ozone dose-response model for wheat in southern europe in: 23rd Task Force Meeting1 - 3 February, 2010 Tervuren, Belgium Programme&Abstracts pp.11.
- Gregg J.W., Jones C.G., Dawson T.E. (2003): Urbanization effects on tree growth in the vicinity of New York City, *Nature* Vol 424 pp.183-7.
- Grennfelt P. (2004): New directions: recent research findings may change ozone control policies, *Atmospheric Environment* Vol 38, pp.2215-6.
- Gulke N.E., Alonso R., Nguyen T., Cascio C., Dobrowolski W. (2004): Stomata open at night: implications for pollutant uptake in ponderosa pine, *Tree Physiology* Vol 24, pp.1001-1010.
- Gulke N.E., Paoletti E., Heath R.L. (2007): Chronic vs. short-term acute O₃ exposure effects on nocturnal transpiration in two Californian oaks, *The Scientific World Journal* Vol 7(S1), pp.134-40.
- Guidi, L., Nali, C., Lorenzini, G., Filippi, F., Soldatini, G.F. (2001): Effect of chronic ozone fumigation on the photosynthetic process of poplar clones showing different sensitivity. *Environmental Pollution* Vol 113, pp.245-254.
- Günthardt-Goerg, M.S. (1996): Different responses to ozone of tobacco, poplar, birch and alder, *Journal of Plant Physiology* Vol 148, pp.207-214.
- Günthardt-Goerg, M.S., Maurer, S., Frey, B., Matyssek, R. (1998): Birch leaves from trees grown in two fertilisation regimes: diurnal and seasonal responses to ozone. In: De Kok, L.J., Stulen, I. (Eds.), *Responses of Plant Metabolism to Air Pollution and Global Change*. Blackhuys Publishers, Leiden, The Netherlands, pp. 315-318.
- Günthardt-Goerg, M.S., Schmutz, P., Matyssek, R., Bucher, J.B. (1996): Leaf and stem structure of poplar (*Populus x euramericana*) as influenced by O₃, NO₂, their combination, and different soil N supplies, *Canadian Journal of Forest Research* Vol 26, pp.649-657.
- Günthardt-Goerg, M.S., Vollenweider, P. (2001): Diagnose von Umwelteinflüssen auf Bäume, *Schweizerische Zeitschrift für Forstwesen* Vol 152, pp.183-192.
- Günthardt-Goerg, M.S. and Vollenweider, P. (2006): Linking stress with macroscopic and microscopic leaf response in trees: New diagnostic perspectives *Environmental Pollution* xx (2006) 1-22
- Haagen-Smith A. J., 1952: Chemistry and physiology of Los-Angeles Smog, *Industrial and engineering Chemistry*, Vol 44, pp.1342-1346.
- Harmens, H., Mills, G. (2005): Review of the influences of climate change on the impacts of ozone on vegetation, The UNECE International Cooperative Programme on Vegetation
- Harmens, H., Mills, G., Emberson, L.D., Ashmore, M.R. (2007): Implications of climate change for the stomatal flux of ozone: a case study for winter wheat, *Environmental Pollution*, Vol 146 (3): pp.763-770.
- Harmens, H., Mills, G., Hayes, F., Williams, P. and the participants of the ICP Vegetation (2004): Air pollution and vegetation. Annual report 2003/2004
- Harmens, H., Mills, G., Hayes, F., Williams, P., De Temmerman, L. and the participants of ICP Vegetation (2005): Air pollution and vegetation. ICP Vegetation Annual Report 2004/2005

- Harmens, H., Mills, G., Hayes, F., Jones, L., Williams, P. and the participants of the ICP Vegetation (2006): Air Pollution and Vegetation ICP Vegetation*Annual Report 2005/2006
- Hayes, F., Mills, G., Harmens, H., Novak, K. and Williams, P. (2006): ICP Vegetation experimental protocol for monitoring the incidences of ozone injury on vegetation
- Hayes, F., Mills, G., Harmens, H., and Norris, D. (2007): Ozone and Crop Losses 2006 (ICP Vegetation Report for Defra Contract EPG 1/3/205)
- Heagle, A.S., Miller, J.E., Chevone, B.I., Dreschel, T.W., Manning, W.J., McCool, P.M., Lynn Morrison, C., Neely, G.E., Rebbeck, J. (1995): Response of a white clover indicator system to tropospheric ozone at eight locations in the United States, *Water, Air and Soil Pollution* Vol 85, pp.1373-1378.
- Heath R.L. (1980): Initial events in injury to plants by air pollutants, *Annual Review of Plant Physiology* Vol 31, pp.395-401.
- Hetherington A.M., Woodward F.I. (2003): The role of stomata in sensing and driving environmental change, *Nature* Vol 424, pp.901-8.
- Hill, A.C., Pack, M.R., Treshow, M., Downs, R.J., Transtrum, L.G. (1961): Plant injury induced by ozone, *Phytopathology* Vol 51, pp.356-363.
- Holland, M., Kinghorn, S., Emberson, L., Cinderby, S., Ashmore, M., Mills, G., Harmens, H. (2006): Development of a framework for probabilistic assessment of the economic losses caused by ozone damage to crops in Europe, Report to Defra, contract EPG 1/3/205.
- Kangasjarvi J., Jaspers P., Kollist H. (2005): Signalling and cell death in ozone-exposed plants, *Plant, Cell and Environment* Vol 28, pp.1021-1036.
- Karlsson, G.P., Karlsson, P.E., Danielsson, H., Pleijel, H. (2003): Clover as a tool for bioindication of phytotoxic ozone – 5 years of experience from southern Sweden – consequences for the short-term critical levels, *The Science of the Total Environment* Vol 301, pp.205-213
- Karlsson, P.E., Sellden, G., Pleijel, H. (2003): Establishing Ozone Critical Levels in: II. UNECE Workshop Report. IV report B 1523. IVL Swedish Environmental Research Institute
- Karnosky F., Pregitzer K.S., Zak D.R., Kubiske M.E., Hendrey G.R., Weinstein D. (2005): Scaling ozone responses of forest trees to the ecosystem level in a changing climate, *Plant, Cell and Environment* Vol 28, pp.965-81.
- Keitel, A. 1989. Praxiserprobte Bioindikationsverfahren – *Staub – Reinhaltung der Luft* Vol 49, pp. 29-34.
- Klausen, J., Zellweger, C., Buchmann, B. and Hofer, P. (2003): Uncertainty and bias of surface ozone measurements at selected Global Atmosphere Watch sites, *Journal of Geophysical Researches*, Vol 108(D19), pp.4622.
- Kurpius, M. R. and Goldstein, A. H. (2003): Gas-phase chemistry dominates O₃ loss to a forest, implying a source of aerosols and hydroxyl radicals to the atmosphere, *Geophysical Research Letters*, Vol 30(7), pp.1371.
- Logan, J.A. (1994): Trends in vertical distribution of ozone: a comparison of two analyses of ozone sonde data, *Journal of Geophysical Research*, Vol 99(D12), pp.25553-25585.
- Lorenz M., Becher G., Mues V., Fischer R., Becker R., Calatayud V. (2005): Forest Condition in Europe. Technical Report. UNECE, Geneva; pp.99

- Lorenzini, G. and Saitanis, C.(2003): Ozone: a novel plant “pathogen” in: Abiotic stresses in plants L. Sanità di Toppi and B. Pawlik Skowrońska (eds), Kluwer Academic Publishers, Netherlands, pp. 205-229.
- Massman, W. J.(1998): A review of the molecular diffusivities of H₂O, CO₂, CH₄, CO, O₃, SO₂, NH₃, N₂O, NO, and NO₂ in air, O₂ and N₂ near STP, *Atmospheric Environment*, Vol 32, pp.1111-1127.
- Matyssek R. (2001): How sensitive is birch to ozone? Responses in structure and function, *Journal of Forest Science* Vol 47, pp.8-20.
- Matyssek, R., Wieser, G., Nunn, A.J., Kozovits, A.R., Reiter, I.M., Heerdt, C., Winkler, J.B., Baumgarten, M., Haberle, K.H., Grams, T.E.E., Werner, H., Fabian, P., Havranek, W.M. (2004): Comparison between AOT40 and ozone uptake in forest trees of different species, age and site conditions, *Atmospheric Environment* Vol 38, pp.2271-2281.
- McDonald E.P., Kruger E.L., Riemenschneider D.E., Isebrands J.G. (2002): Competitive status influences tree-growth responses to elevated CO₂ and O₃ in aggrading aspen stands, *Functional Ecology* Vol 16, pp.792-801.
- Meyers, T. P., Finkelstein, P. L., Clarke, J. F., Ellestad, T. G., and Sims, P. F. (1998): A multilayer model for inferring dry deposition using standard meteorological measurements, *Journal of Geophysical Research*, Vol 103, pp.22 645-22 661
- Midgley P.M., Builtjes P.J.H., Fowler D., Harrison R.M., Hewitt C.N., Noone K.J. (2002): Eurotrac-2 Synthesis and Integration Report: Towards Cleaner Air for Europe – Science, Tools and Applications. GSF, National Research Centre for Environment and Health, Munich, Germany;
- Mikkelsen, T. N., Ro-Poulsen, H., Pilegaard, K., Hovmad, M. F., Jensen, N. O., Christensen, C. S., and Hummelshøj, P. (2000): Ozone uptake by an evergreen forest canopy: temporal variation and possible mechanisms, *Environmental Pollution*, Vol 109, pp.423-429.
- Mills, G., Hayes, F., Williams, P. and Harmens, H. (2005): ICP Vegetation experimental protocol for monitoring the incidences of ozone injury on vegetation, Natural Environment Research Council pp.20
- Mills, G., Hayes, F. and Ball, G. (1999): ‘ICP-Non-Wood Plants and Crops Annual Progress Report’, UN/ECE, Working Group on Effects of the Convention on Long Range Transboundary Air Pollution. University of Wales, Bangor, U.K.
- Mills, G., Hayes, F., Jones, M.L.M., Cinderby, S. (2007): Identifying ozone-sensitive communities of (semi-) natural vegetation suitable for mapping exceedance of critical levels. *Environmental Pollution* Vol 146, pp.736-743.
- Moldau H., Sober J., Sober A. (1990): Differential sensitivity of stomata and mesophyll to sudden exposure of bean shoots to ozone, *Photosynthetica* Vol 24, pp.446-458.
- Mülleder, N., Gross, H., Arndt, U. (1992): Wirkungsbezogene Messung von Ozon – Ein Vergleich der Reaktion von Tabak Bel W 3 und Indigo. In: Köhler, J. – Arndt, U. Bioindikatoren für Umweltbelastung – Neue Aspekte und Entwicklungen. Hohenheimer Umwelttagung-Verlag Josef Margraf Universität Hohenheim. pp. 49-59.
- Naja, M. and Akimoto, H. (2004): Contribution of regional pollution and long-range transport to the Asian-Pacific region: analysis of log-term ozone sonde data over Japan *Journal of Geophysical Research* Vol 109

- Nali, C., Francini, A. and Lorenzini, G. (2006): Biological monitoring of ozone: the twenty-year Italian experience *Journal of Environmental Monitoring* Vol 8, pp.25–32.
- Oltmans, S.J. et al., (2006): Long-term changes in tropospheric ozone, *Atmospheric Environment* Vol 40, pp.3156–3173.
- Ordóñez, C. (2006): Trend analysis of ozone and evaluation of nitrogen dioxide satellite data in the troposphere over Europe, Doctoral thesis, 16544, ETHZ
- Paakkönen E., Holopainen T., Kaarenlampi L. (1997): Variation in ozone sensitivity of *Betula pendula* and *Betula pubescens* clones from southern and central Finland, *Environmental Pollution* Vol 95, pp.37–44.
- Paoletti E., Bytnerowicz A., Andersen C., Augustaitis A., Ferretti M., Günthardt-Goerg M.S. (2007): Impacts of air pollution and climate change on forest ecosystems – emerging research needs, *The Scientific World Journal* Vol 7(S1), pp.1–8.
- Paoletti E., Grulke N.E. (2005): Does living in elevated CO₂ ameliorate tree response to ozone? A review on stomatal responses, *Environmental Pollution* Vol 137, pp.483–93.
- Paoletti E., Manning W.J. (2007): Toward a biologically significant and usable standard for ozone that will also protect plants, *Environmental Pollution*, Vol 150, pp.85–95.
- Paoletti E. (2006): Impact of ozone on Mediterranean forests: a review, *Environmental Pollution* Vol 144, pp.463–74.
- Paoletti E. (2005): Ozone slows stomatal response to light variation and wounding in a Mediterranean evergreen broadleaf: *Arbutus unedo*, *Environmental Pollution* Vol 134, pp.439–45.
- Paoletti, E. (2007): Ozone impacts on forests CAB Reviews: Perspectives in Agriculture, Veterinary Science, Nutrition and Natural Resources Vol.2, No. 068
- Pell E.J., Schlaghauser C.D., Arteca R.N. (1991) Ozone induced oxidative stress: mechanisms of action and reaction, *Physiologia Plantarum* Vol 100, pp.264–73.
- Pellinen, R., Palva, T., Kangasjarvi, J. (1999): Subcellular localization of ozone-induced hydrogen peroxide production in birch (*Betula pendula*) leaf cells, *Plant Journal* Vol 20, pp.349–356.
- Pilegaard, K. (2001): Air-soil exchange of NO, NO₂ and O₃ in forests, *Water, Air, Soil Pollution*.: Focus, Vol 201, pp. 79–88.
- Pleijel, H., Danielsson, H., Ojanpera, K., De Temmerman, L., Høgy, P., Badiani, M., Karlsson, P.E. (2004): Relationships between ozone exposure and yield loss in European wheat and potato – a comparison of concentration and flux-based exposure indices, *Atmospheric Environment* Vol 38, pp.2259–2269.
- Postiglione, L., Fagnano, M., Merola, G. (2000): Response to ambient ozone of two white clover (*Trifolium repens* L.cv. “Regal”) clones, one resistant and one sensitive, grown in a Mediterranean environment, *Environmental Pollution* Vol 109, pp. 525–531.
- Pye, J.M. (1988): Impact of ozone on the growth and yield of trees – a review, *Journal of Environmental Quality* Vol 17, pp.347–360.
- Reinert, A., and Eason, G. (2000): Genetic control of O₃ sensitivity in a cross between two cultivars of snap bean, *Journal of American Society of Horticultural Science* Vol 125(2), pp.222–227.
- Ribas, A., Penuelas, J. (2003): Biomonitoring of tropospheric ozone phytotoxicity in rural Catalonia, *Atmospheric Environment* Vol 37, pp.63–71.

- Rondón, A., Johansson, C., and Granat, L. (1993): Dry deposition of nitrogen dioxide and ozone to coniferous forest, *Journal of Geophysical Research* Vol 98, pp.5159–5172.
- Sandermann J. H. (1996): Ozone and plant health, *Annual Review of Phytopathology* Vol 34, pp.347–66.
- Sandermann, H., Ernst, D., Heller, W., Langebartels, C. (1998): Ozone: An abiotic elicitor of plant defence reactions, *Trends in Plant Science* Vol. 3. pp. 47-50.
- Schafner, P. (1998): Bioindikation von Ozon in Ostösterreich eine Fallstudie. In: Forstliche Schriftenreihe Universität für Bodenkultur, Wien. Band 11.
- Schönbein, C. F. (1844): Abhandlungen der Bayrischen Akademie der Wissenschaften Naturwissenschaftlich-mathematische Klasse, München pp.257.
- Seinfeld, J. H., and Pandis, S. N. (1998): *Atmospheric Chemistry and Physics*, John Wiley and Sons, New York
- Simmonds, P.G., Manning, A.J., Derwent, R.G., Ciais, P., Ramonet, M., Kazan, V. and Ryall, D. (2005): A burning question. Can recent growth rate anomalies in the greenhouse gases be attributed to large-scale biomass burning events, *Atmospheric Environment* Vol 39, pp.2513–2517.
- Simpson, D., Tuovinen, J.-P., Emberson, L. D., and Ashmore, M. R. (2003): Characteristics of an ozone deposition module II: Sensitive analysis, *Water, Air, and Soil Pollution* Vol 143, pp.123–137, 2003.
- Sitch S., Cox P.M., Collins W.J., Huntingford C. (2007): Indirect radiative forcing of climate change through ozone effects on the landcarbon sink, *Nature* Vol 448, pp.791–4.
- Staehelin, J. and Poberaj, C.S. (2008): Long-term Tropospheric Ozone Trends: A Critical Review in: S. Brönnimann et al. (eds.), *Climate Variability and Extremes during the Past 100 Years*. pp. 271
- Staehelin, J., Thudium, J., Bühler, R., Volz-Thomas, A and Graber, W. (1994): Surface ozone trends at Arosa (Switzerland), *Atmospheric Environment*, Vol 28, pp.75–87.
- Staehelin, J., Prévôt, A.S.H., and Barnes, J. (2000): Photochemie der Troposphäre, *Handbuch der Umweltveränderungen und Ökotoxikologie*, Band IA: Atmosphäre, R. Guderian, Ed., Springer Verlag, pp.207-341.
- Tarasick, D.W., Fioletov, V.E., Wardle, D.I., Kerr, J.D. and Davies, J. (2005): Changes in the vertical distribution of ozone over Canada from ozonesondes: 1980–2001. *Journal of Geophysical Research* Vol 110.
- The Royal Society (2008): Ground level ozone in the 21st century: future trends, impacts and policy implications. Science Policy Report 15/08. The Royal Society, London.
- Thouret, V., Cammas, J.-P., Sauvage, B., Athier, B., Zbinden, R. M., Nédélec, P., Simmon, P. and Karcher, F. (2006): Tropopause referenced ozone climatology and inter-annual variability (1994–2003) from MOZAIC programme. *Atmospheric Chemistry and Physics* Vol 6, pp.1033–1051.
- Van Hove, L.W.A., Bossen, M.E., de Bok, F.A.M., and Hooijmaijeres, C.A.M. (1999): The uptake of O₃ by poplar leaves: the impact of a long-term exposure to low O₃-concentrations, *Atmospheric Environment* Vol 33, pp.907–917.
- Vingarzan, R. (2004): A review of surface O₃ background levels and trends, *Atmospheric Environment* Vol 38, pp.3431–3442.
- Volk, M., Obrist, D., Novak, K., Giger, R., Bassin, S. and Fuhrer, J. (2010): Subalpine grassland net CO₂ fluxes indicate reduced gpp and reco at elevated ozone, but no reduction of productivity in: 23rd Task Force Meeting 1 – 3 February, 2010 Tervuren, Belgium Programme & Abstracts pp.26.

- Vollenweider, P., Ottiger, M., Günthardt-Goerg, M.S. (2003): Validation of leaf ozone symptoms in natural vegetation using microscopical methods, *Environmental Pollution* Vol 124, pp.101-118.
- Witting, V.E., Ainsworth, E.A., Naidu, S.L., Karnosky, D.F., Long, S.P. (2009): Quantifying the impact of current and future tropospheric ozone on tree biomass, growth, physiology and biochemistry: a quantitative meta-analysis. *Global Change Biology* Vol 15, no. 2 pp. 396-424.

IntechOpen

IntechOpen



Air Pollution

Edited by Vanda Villanyi

ISBN 978-953-307-143-5

Hard cover, 370 pages

Publisher Sciyo

Published online 17, August, 2010

Published in print edition August, 2010

Although the climate of the Earth is continually changing from the very beginning, anthropogenic effects, the pollution of the air by combustion and industrial activities make it change so quickly that the adaptation is very difficult for all living organisms. Researcher's role is to make this adaptation easier, to prepare humankind to the new circumstances and challenges, to trace and predict the effects and, if possible, even decrease the harmfulness of these changes. In this book we provide an interdisciplinary collection of new studies and findings on the score of air pollution.

How to reference

In order to correctly reference this scholarly work, feel free to copy and paste the following:

Vanda Villanyi, Boris Turk, Franc Batic and Zsolt Csintalan (2010). Ozone Pollution and its Bioindication, Air Pollution, Vanda Villanyi (Ed.), ISBN: 978-953-307-143-5, InTech, Available from:
<http://www.intechopen.com/books/air-pollution/ozone-pollution-and-its-bioindication>

INTECH
open science | open minds

InTech Europe

University Campus STeP Ri
Slavka Krautzeka 83/A
51000 Rijeka, Croatia
Phone: +385 (51) 770 447
Fax: +385 (51) 686 166
www.intechopen.com

InTech China

Unit 405, Office Block, Hotel Equatorial Shanghai
No.65, Yan An Road (West), Shanghai, 200040, China
中国上海市延安西路65号上海国际贵都大饭店办公楼405单元
Phone: +86-21-62489820
Fax: +86-21-62489821

© 2010 The Author(s). Licensee IntechOpen. This chapter is distributed under the terms of the [Creative Commons Attribution-NonCommercial-ShareAlike-3.0 License](https://creativecommons.org/licenses/by-nc-sa/3.0/), which permits use, distribution and reproduction for non-commercial purposes, provided the original is properly cited and derivative works building on this content are distributed under the same license.

IntechOpen

IntechOpen