

We are IntechOpen, the world's leading publisher of Open Access books Built by scientists, for scientists

6,900

Open access books available

185,000

International authors and editors

200M

Downloads

Our authors are among the

154

Countries delivered to

TOP 1%

most cited scientists

12.2%

Contributors from top 500 universities



WEB OF SCIENCE™

Selection of our books indexed in the Book Citation Index
in Web of Science™ Core Collection (BKCI)

Interested in publishing with us?
Contact book.department@intechopen.com

Numbers displayed above are based on latest data collected.
For more information visit www.intechopen.com



Robot Navigation with Speech Commands

Anupam Shukla and Ritu Tiwari

*ABV-Indian Institute of Information Technology and Management, Gwalior
India*

1. Introduction

The field of Robotics draws on a multitude of engineering disciplines. There are mechanical, electrical and software considerations but the interaction among these and other disciplines is quite complex. Today's robots are equipped with wheels, wings, legs and also camera and laser/sonar range finders to perceive its neighborhood world. Vision-based robots are obviously smarter, but a mobile robot needs an online facility for scene analysis, which is a formidable task. AI tools may be used to model its neighborhood world using visual input and range information. Such model of perception enhances the robot's capability in coordinating complex actions pertaining to motion, visual tracking and avoidance of obstacle (Corke Peter, 2005; Corke Peter, 2003; Ragavan S. Veera & Ganapathy V, 2007). The field of neural networks can be thought of as being related to AI, machine learning, parallel processing, statistics, and other fields. The attraction of neural networks is that they are best suited to solving the problems that are the most difficult to solve by traditional computational methods (Rich, E. and Knight, K, 1991). ANNs were inspired by models of biological neural networks since much of the motivation came from the desire to produce artificial systems capable of sophisticated, perhaps "intelligent", computations similar to those that the human. The network presented here learns with the Back Propagation (BP) algorithm (Basheer, I.A & Hajmeer, M, 2000; E. D. Karnin, 1990; R. Hecht-Nielsen, 1989; Yegnanarayana, B, 2004).

This chapter deals with robot navigation avoiding static and dynamic obstacles in the path of the mobile robot, planning the future path of the mobile robot with the help of Artificial Neural Networks (ANNs) and also accepting the speech commands to traverse the directed path and accordingly to reach the destination.

Three ANN models has been discussed one each for speech signal inputs (ANN-1), static and dynamic input (ANN-2)and decision making (ANN-3). The robot can move left, right, forward left ,forward and forward right along with start and stop commands based on speech signals. The speed of the robot is constant but it can be varied to have the advantage of providing the acceleration at the start and de-acceleration to avoid any damage to robot or obstacle.The direction of movement can be controlled speech commands.

The utterances of 50 speakers were recorded for seven words namely start, stop, TL, TR, FL, FW and FR are recorded and sampling is done at 16 kHz. The speech data bank is developed by cutting the word and storing in the separate files. The signal processing tool box in MATLAB is used to extract the speech feature namely, formant frequency, Peak power spectral density, cepstral magnitude and number of zero crossing. The mean values for all the words are calculated to get speech feature for command control of the Robot. The ANN Model is trained for the command signals and use to drive the robot.

2. Methodology of Robot Navigation

The methodology of navigation of mobile robot using ANN with speech commands is represented in the figure No-1. After reading the positions of source, destination and obstacles (static and dynamic), the mobile robot makes decision for two aspects mainly; the avoidance of collisions with obstacles and secondly reaching the destination through optimized path in minimum time. The decision making is accomplished by ANN technique. In the mean time if the robot gets the speech command, it pause from whatever is doing and takes the new instructions for further movements and decision making.

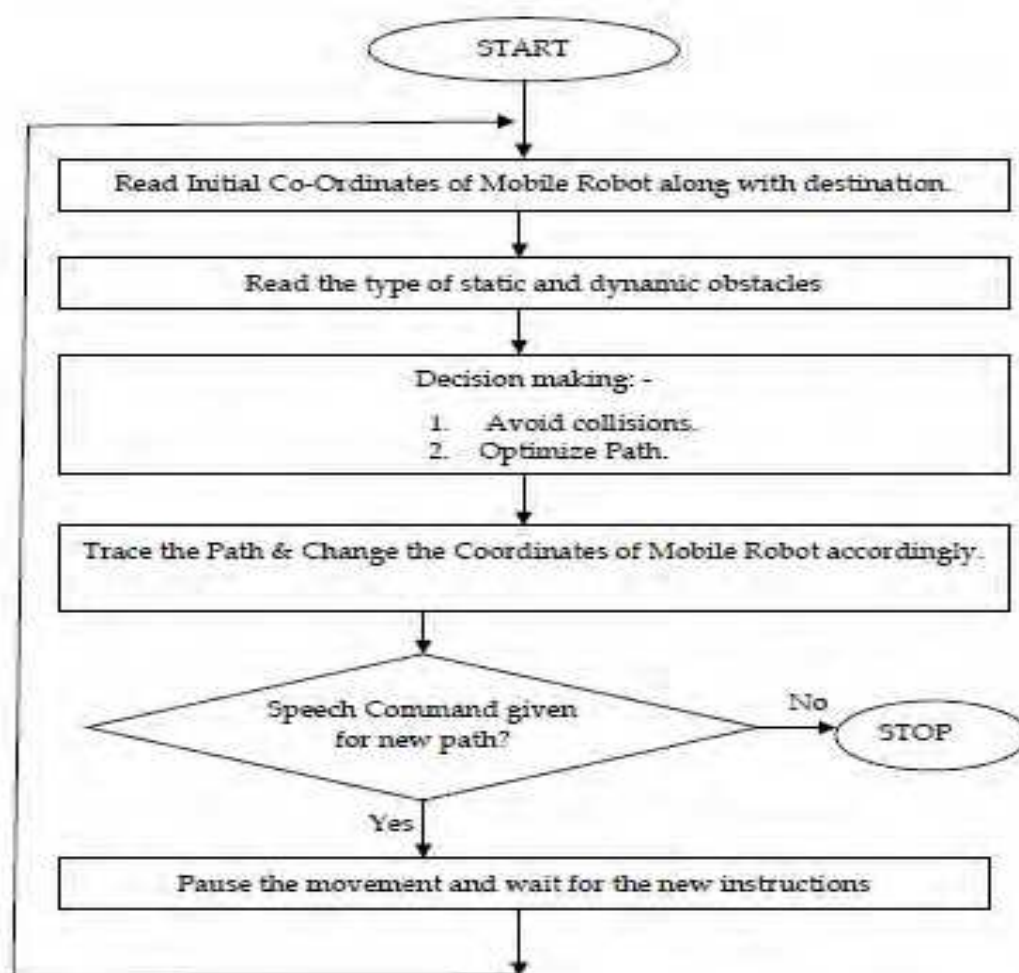


Fig. 1. Flow diagram for robot path planning using speech command

2.1 The Neural Network Based Local Guidance Scheme

The navigation of the mobile robot is based on the steering decision based on a local grid. The local grid is used to collect the local information. The speech command is issued to direct the robot to avoid the obstacles and move towards the current sub-goal. The ANN consist of 3-layers structure (Figure 2) with two hidden layers of 10 neurons each and the network is trained by the Back-propagation algorithm.

The learning rate is 0.01 and momentum is 0.9. The NN is trained and tested on the ANN Toolbox in MATLAB 7.0.1.

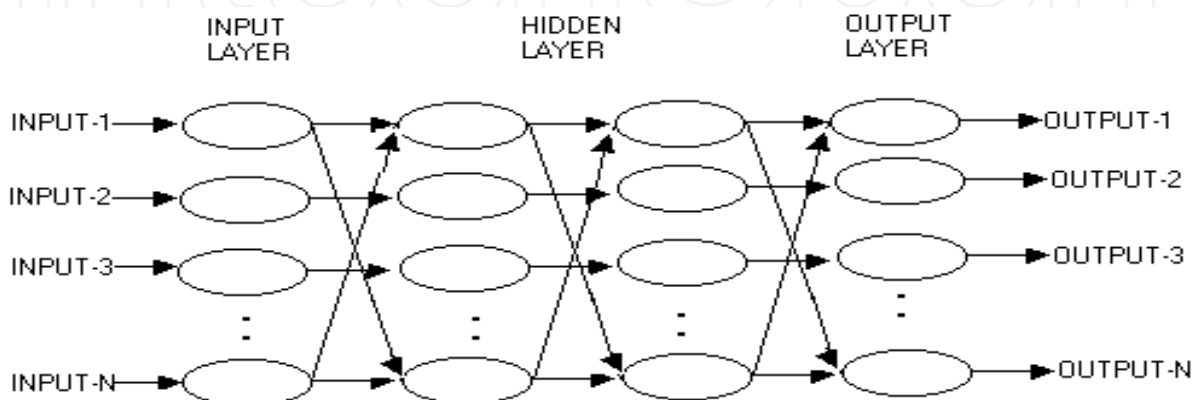


Fig. 2. Multi-Layer Neural Network

2.2. Local Grid

The local information is represented as 15 equal squares (Figure 3), which are used to indicate the occupation state of the immediate neighborhood of the robot. A binary value is assigned to each square. The value '1' implies that the square is full (presence of obstacles), '0' means that the square is empty (absence of obstacles) and for speech commands binary value '0' means no speech command is given during the motion and binary value '1' means speech command STOP is given and so mobile robot shall stop at that very moment to get the new instructions. After getting the new destination the robot again plans the path and reaches the new destination avoiding the obstacles. MR represents the Mobile Robot. There are five steering commands, which define the following moving action:

FW = Forward (MR to12),
 FL = Forward left (MR to11),
 FR = Forward right (MR to13),
 TL = Turn left (MR to10),
 TR = Turn right (MR to14) &
 STOP = Pause the motion.
 START=to start the Robot

3	4	5	6	7
2	11	12	13	8
1	10	MR	14	9

Fig. 3. Local Grid

2.3 Observations & Results

The sample training patterns for the static and dynamic and Path planning nets are presented in tabular form in Table No. 1, 2 and 3 respectively. The entries under inputs, denotes the cell numbers surrounding the Robot.

Inputs are position of obstacles at respective cells of the grid (1 = presence and 0 = absence of obstacle) and the speech command SP (0= no speech command and 1 = speech command STOP). Outputs are five action commands (L = Left; FL = Forward Left; F = Forward; FR = Forward Right; R= Right) and two-direction indicator (TR = Turn Right and TL = Turn Left).

Outputs of Table No. 1 and 2 are AND ed and given as input to Table 3. The output of the DM net gives command to the robot i.e. YES to go and NO to stop. The user menu is made fully interactive and is equipped with the stunning graphic effects. The current location of the robot is indicated on the screen, whenever the robot moves. After giving the destination the work of the operator is over and robot starts moving towards the destination, recognizing the obstacles and also uses the past knowledge about obstacle to decide the appropriate path.

In case the operator wants to change the destination while the robot is traversing the path, the operator gives the speech command STOP and robot stops the motion it is traversing, and waits for the new instructions. After the operator gives the new instructions (i.e. new destination) the robot traverses the path accordingly avoiding the static and dynamic obstacles.

INPUTS (Square Values)										OUTPUTS						
1	2	7	8	9	10	11	12	13	14	L	TL	FL	F	FR	TR	R
1	1	0	1	1	0	0	0	0	1	1	1	1	1	1	1	0
1	1	0	1	0	0	1	0	0	0	1	1	0	1	1	1	1
.
0	0	0	0	0	0	0	0	0	0	1	1	1	1	1	1	1

Table 1. Training Pattern Samples of staticNetwork

INPUTS (Square Values)										OUTPUTS						
1	2	3	8	9	10	11	12	13	14	L	TL	FL	F	FR	TR	R
0	0	0	0	0	0	0	0	0	1	1	1	1	0	0	1	0
0	0	1	1	0	0	0	0	0	0	1	1	0	1	0	1	0
.
0	0	0	0	0	0	0	0	0	0	1	1	1	1	1	1	1

Table 2. Training Patterns Samples of Dynamic Networks.

INPUTS								OUTPUTS	
L	TL	FL	F	FR	TR	R	SP	Y	N
1	1	1	0	0	1	0	0	1	0
1	1	1	0	0	1	0	1	0	1
1	1	0	1	0	1	0	0	1	0
1	1	0	1	0	1	0	1	0	1
.
.
1	1	1	1	1	1	1	0	1	0
1	1	1	1	1	1	1	1	0	1

Table 3. Training Pattern Samples of Path planning Network.

3. Conclusions

The navigation planning and guidance of the mobile robot is successfully implemented using ANN in a planner workspace by finding the collision free path to lead the robot from the initial critical configuration to the goal among the set of obstacles, other wise every possible input is tried and there is no way to be certain for the precise output. The path planning algorithm may be expected to make several prediction regarding probable paths to destination by making linked queue and whenever it encounters obstacle it should follow the other nearest queue having the least possibility of the obstacles. The speed of the robot is constant but it can be varied to have the advantage of providing the acceleration at the start and de-acceleration when the obstacle is sensed for stopping the robot or slowing down to avoid any damage to robot or obstacle. This work can be extended to real time path planning and hence can be effectively applied for commercial purpose.

4. References

Amit Konar AI and SC Behavioral and Coqnitive modelling of the human brain CRC Publication

Ayala-Ramirez V, Perez-Garcia A, Montecillo-Puente E J, Sanchez-Yanez R E. (2004). Path planning using genetic algorithms for mini-robotic tasks, *2004 IEEE International Conference on Systems, Man and Cybernetics*, pp. 3746- 3750, vol.4, ISBN: 0-7803-8566-7, F.I.M.E.E., Universidad de Guanajuato, 10-13 Oct. 2004, IEEE, Mexico.

- Basheer, I.A., and Hajmeer, M. (2000). Artificial neural networks: fundamentals, computing, design, and application, *J. Microbiol. Methods*, vol. 43, No. 1 (2000), pp. 3-31.
- Corke Peter, Peterson Ron, Rus Daniela (2005), Localization and Navigation Assisted by Networked Cooperating Sensors and Robots, *International Journal of Robotics Research*, Vol. 24, Issue 9, pp. 771 - 786 (Sept. 2005), Sage Publications, Inc. Thousand Oaks, CA, USA.
- Corke Peter, Peterson Ron, Rus Daniela. (2003), Networked Robots: Flying Robot Navigation using a Sensor Net", April 18, 2003.
<http://cmc.cs.dartmouth.edu/papers/corke:flying.pdf>
- E. D. Karnin (1990). A simple procedure for pruning back-propagation trained neural networks. *IEEE Transactions on Neural Networks*, vol. 1, No. 2, pp. 239-242 (1990).
- M.F. Selekwa and E. G. Collins (2003) A centralized fuzzy behavior control for robot navigation, *Proceedings of IEEE International Symposium on Intelligent control*, pp. 602-607 (October, 2003), Houston, Texas.
- M.F. Selekwa, D. D. Dunlap & E. G. Collins (2005), Implementation of multi-valued fuzzy behavior control for robot navigation in cluttered, *Proceedings of IEEE International Conference on Robotics and Automation*, pp. 3699-3706 (April, 2005), Barcelona, Spain
- Matlin, W. Margaret (2004), *Cognition*, John Wiley & Sons, ISBN: 0471450073, ISBN-13: 9780471450078, 978-0471450078
- Na Yong-Kyun and Oh Se-Young (2004), Hybrid Control for Autonomous Mobile Robot Navigation Using Neural Network Based Behavior Modules and Environment Classification, *Autonomous Robots*, Vol. 15, No. 2, pp. 193-206, (Nov. 2004) Springer Netherlands. ISSN 0929-5593 (Print) 1573-7527 (Online).
- P. Rusu, E. M. Petriu, T. E. Whalen, A. Cornell & H. J. W. Spoelder (2003), Behavior-based neurofuzzy controller for mobile robot navigation, *IEEE Trans. Instrum. Measur.* vol.52, No. 4, pp.1335-1340, (Aug, 2003).
- Pagac, D., Nebot, E. M. and Durrant. W., H. (1998), An evidential approach to map building for autonomous robots, *IEEE Trans. On Robotics and Automation*, vol.14, no.2, pp. 623-629, (Aug. 1998).
- R. Hecht-Nielsen (1989). Theory of the Backpropagation. Neural Network, *Proceedings of the International Joint Conference on Neural Networks*, 1: pp. 593-606. IEEE, New York.
- Ragavan S. Veera, and Ganapathy V (2007), A Unified Framework for a Robust Conflict-Free Robot Navigation, *Proceeding of World Academy of Science, Engineering and Technology*, pp.1307-6884, (21 January 2007).
- Rich, E. and Knight, K. (1991.), *Artificial Intelligence*, pp. 29-98. McGraw-Hill, New York,
- S.K. Pradhan, D. R. Parhi and A. K. Panda (2006), Navigation of multiple mobile robots using rule based- neuro-fuzzy technique, *International Journal of Computational Intelligence*, Vol. 3, No. 2, pp.142-151.
- Shaygan K. and T. James S. (1998), Real-time Control of Robot Manipulators in the presence of Obstacles", *IEEE Journal of RA*, Vol.4, No. 6 (Dec. 1988).
- Yegnanarayana, B. (2004), *Artificial Neural Networks*, Prentice Hall of India. ISBN:8120312538



New Advanced Technologies

Edited by Aleksandar Lazinica

ISBN 978-953-307-067-4

Hard cover, 350 pages

Publisher InTech

Published online 01, March, 2010

Published in print edition March, 2010

This book collects original and innovative research studies concerning advanced technologies in a very wide range of applications. The book is compiled of 22 chapters written by researchers from different areas and different parts of the world. The book will therefore have an international readership of a wide spectrum.

How to reference

In order to correctly reference this scholarly work, feel free to copy and paste the following:

Anupam Shukla and Ritu Tiwari (2010). Robot Navigation with Speech Commands, New Advanced Technologies, Aleksandar Lazinica (Ed.), ISBN: 978-953-307-067-4, InTech, Available from:
<http://www.intechopen.com/books/new-advanced-technologies/robot-navigation-with-speech-commands>

INTECH
open science | open minds

InTech Europe

University Campus STeP Ri
Slavka Krautzeka 83/A
51000 Rijeka, Croatia
Phone: +385 (51) 770 447
Fax: +385 (51) 686 166
www.intechopen.com

InTech China

Unit 405, Office Block, Hotel Equatorial Shanghai
No.65, Yan An Road (West), Shanghai, 200040, China
中国上海市延安西路65号上海国际贵都大饭店办公楼405单元
Phone: +86-21-62489820
Fax: +86-21-62489821

© 2010 The Author(s). Licensee IntechOpen. This chapter is distributed under the terms of the [Creative Commons Attribution-NonCommercial-ShareAlike-3.0 License](https://creativecommons.org/licenses/by-nc-sa/3.0/), which permits use, distribution and reproduction for non-commercial purposes, provided the original is properly cited and derivative works building on this content are distributed under the same license.

IntechOpen

IntechOpen