

# We are IntechOpen, the world's leading publisher of Open Access books Built by scientists, for scientists

6,900

Open access books available

185,000

International authors and editors

200M

Downloads

Our authors are among the

154

Countries delivered to

TOP 1%

most cited scientists

12.2%

Contributors from top 500 universities



WEB OF SCIENCE™

Selection of our books indexed in the Book Citation Index  
in Web of Science™ Core Collection (BKCI)

Interested in publishing with us?  
Contact [book.department@intechopen.com](mailto:book.department@intechopen.com)

Numbers displayed above are based on latest data collected.  
For more information visit [www.intechopen.com](http://www.intechopen.com)



# Dialectical Classification of MR Images for the Evaluation of Alzheimer's Disease

Wellington Pinheiro dos Santos,  
*Escola Politécnica de Pernambuco, Universidade de Pernambuco*  
Brazil

Francisco Marcos de Assis,  
*Departamento de Engenharia Elétrica, Universidade Federal de Campina Grande*  
Brazil

Ricardo Emmanuel de Souza,  
*Departamento de Física, Universidade Federal de Pernambuco*  
Brazil

Plínio Bezerra dos Santos Filho  
*Department of Physics, North Carolina State University*  
USA

## 1. Introduction

Alzheimer's disease is the most common cause of dementia, both in senile and presenile individuals, observing the gradual progress of the disease as the individual becomes older (Ewers et al., 2006). The major manifestation of Alzheimer's disease is the diminution of the cognitive functions with gradual loss of memory, including psychological, neurological and behavioral symptoms indicating the decline of the daily life activities as a whole. Alzheimer's disease is characterized by the reduction of gray matter and the growth of cerebral sulci. However, the white matter is also affected, although the relation between Alzheimer's disease and white matter is still unknown (Friman et al., 2006).

Acquisition of diffusion-weighted magnetic resonance images (DW-MR images) turns possible the visualization of the dilation of the lateral ventriculi temporal corni, enhancing the augment of sulci, related to the advance of Alzheimer's disease (Haacke et al., 1999). Therefore, volumetrical measuring of cerebral structures is very important for diagnosis and evaluation of the progress of diseases like Alzheimer's (Ewers et al., 2006), especially the measuring of the volumes occupied by sulci and lateral ventriculi, turning possible the addition of quantitative information to the qualitative information expressed by the DW-MR images (Hayasaka et al., 2006).

Usually, the evaluation of the progress of Alzheimer's disease using image analysis of DW-MR images is performed after acquiring at least three images of each slice of interest,

generated using the sequence spin-echo Stejskal-Tanner with different diffusion exponents, where one of the exponents is 0 s/mm<sup>2</sup>, that is, a T2-weighted spin-echo image (Haacke et al., 1999). Then, a fourth image is calculated: the Apparent Diffusion Coefficient Map, or ADC map, where each pixel is associated to the corresponding apparent diffusion coefficient of the associated voxel: the brighter the pixels, the greater the corresponding apparent diffusion coefficients (Haacke et al., 1999).

The dialectical conception of reality is a kind of philosophical investigative method for analyzing processes present in nature and in human societies. Its origins are connected to the philosophy of the ancient civilizations of Greece, China and India, closely connected to the thoughts of Heraclite, Plato, and the philosophies of Confucionism, Buddhism, and Zen. As a general analysis method, dialectics has experienced considerable progress due to the development of German Philosophy in the 19th century, with Hegel's dialectics and, in the 20th century, the works of Marx, Engels, and Gramsci. All those philosophers produced seminal works on the dynamics of contradictions in nature and class-based societies, giving rise to the Historical Materialism (Marx, 1980; Engels, 1975; Gramsci, 1992a; Gramsci1992b; Bobbio, 1990).

The dialectical method of Historical Materialism is a tool for studying systems by considering the dynamics of their contradictions, as dynamic processes with intertwined phases of *evolution* and *revolutionary crisis*. It has inspired us to conceive an evolutionary computational intelligent method for classification that is able to solve problems commonly approached by neural networks and genetic algorithms.

Each of the most common paradigms of Computational Intelligence, namely neural networks, evolutionary computing, and culture-inspired algorithms, has its basis in a kind of theory intended to be of general application, but in fact very incomplete; e.g. the neural networks approach is based on a certain model of the brain; evolutionary computing is based on Darwin's theory; and cultural-inspired algorithms are based on the study of populations, such as those of ant colonies.

However, it is important to note that it is not necessarily the case (and indeed it may be impossible) that the theories an algorithm are based on have to be complete. For example, neural networks utilize a well-known incomplete model of the neurons. This is a strong reason for investigating the use of Philosophy as a source of inspiration for developing computational intelligent methods and models to apply in several areas, such as pattern recognition.

Thornley and Gibb discussed the application of Dialectics to understand more clearly the paradoxical and conceptually contradictory discipline of information retrieval (Thornley & Gibb, 2007), while Rosser Jr. attempted to use some aspects of Dialectics in nonlinear dynamics, comparing some aspects of Marx and Engel's dialectical method with concepts of Catastrophe Theory, Emergent Dynamics Complexity and Chaos Theory (Rosser Jr., 2000). However, there are no works proposing a mathematical approach to establish the fundamentals of Dialectics as a tool for constructing computational intelligent methods.

This work presents the Objective Dialectical Method (ODM), which is an evolutionary computational intelligent method, and the Objective Dialectical Classifier (ODC), an instance of ODM that operates as a non-supervised self-organized map dedicated to pattern recognition and classification. ODM is based on the dynamics of contradictions among dialectical poles. In the task of classification, each class is considered as a dialectical pole. Such poles are involved in pole struggles and affected by revolutionary crises, when some

poles may disappear or be absorbed by other ones. New poles can emerge following periods of revolutionary crisis. Such a process of pole struggle and revolutionary crisis tends to a stable system, e.g. a system corresponding to the clusterization of the original data.

This chapter presents a relatively new approach to evaluate the progress of Alzheimer's disease: once the ADC map usually presents pixels with considerable intensities in regions not occupied by the head of patient, a degree of uncertainty can also be considered in the pixels inside the sample. Furthermore, the ADC map is very sensitive to noisy images (Haacke et al., 1999; Santos et al., 2007). Therefore, in this case study, images are used to compose a multispectral image, where each diffusion-weighted image is considered as a spectral band in a synthetic multispectral image. This multispectral image is classified using the Objective Dialectical Classifier, a new classification method based on Dialectics as defined in the Philosophy of Praxis.

## 2. Materials and Methods

### 2.1 DW-MR Images and ADC Maps

The DW-MR images used in this work were acquired from the clinical images database of the Laboratory of MR Images, at the Department of Physics of Universidade Federal de Pernambuco, Recife, Brazil. This database is composed by clinical images acquired from Alzheimer's volunteers, using clinical 1.5 T MR imaging systems. We used 60 cerebral DW-MR images corresponding to male patients with Alzheimer's disease. To perform the training of the proposed analysis, we chose the MR images corresponding to the 13th slice, showing the temporal corni of the lateral ventriculi, to furnish a better evaluation for specialists and facilitate to stablish correlations between data generated by the computational tool and *a priori* specialist knowledge.

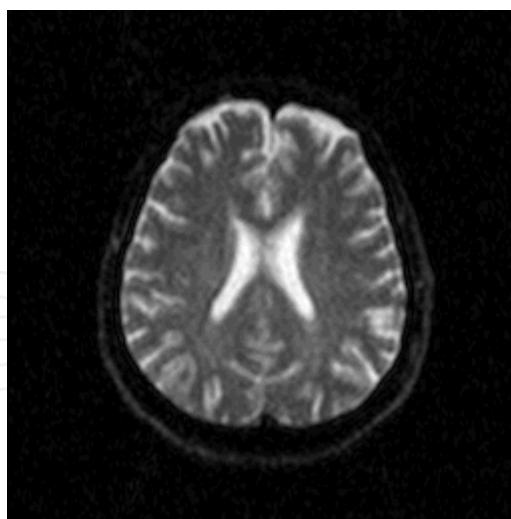


Fig. 1. Axial diffusion-weighted image with exponent diffusion of  $0 \text{ s/mm}^2$

An image can be considered as a mathematical function, where its domain is a region of the plane of the integers, called grid, and its counterdomain is the set of the possible values occupied by the pixels corresponding to each position on the grid.

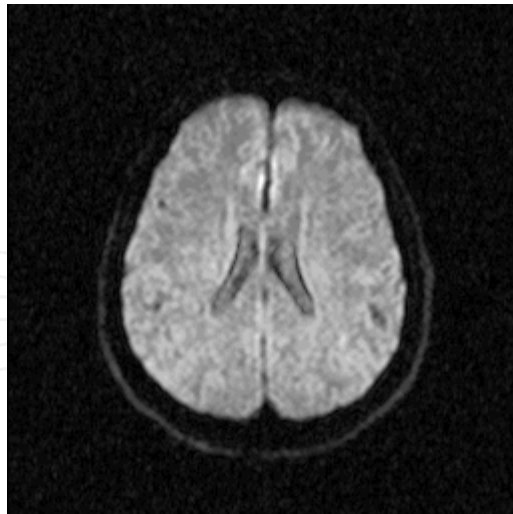


Fig. 2. Axial diffusion-weighted image with exponent diffusion of 500 s/mm<sup>2</sup>

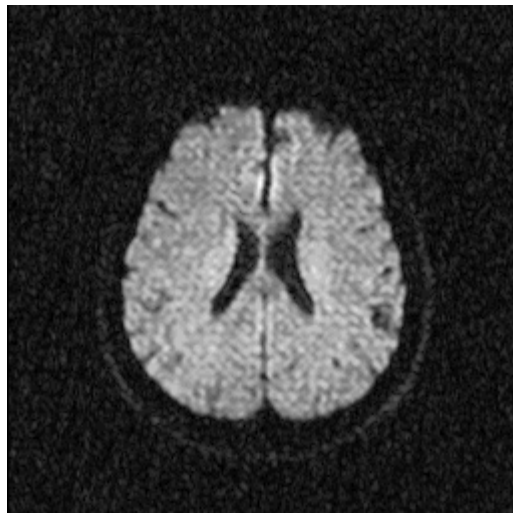


Fig. 3. Axial diffusion-weighted image with exponent diffusion of 1000 s/mm<sup>2</sup>

Let  $f_i : S \rightarrow W$  be the set of the diffusion-weighted MR images, where  $1 \leq i \leq 3$ ,  $S \subseteq \mathbf{Z}^2$  is the grid of the image  $f_i$ , where  $W \subseteq \mathbf{R}$  is its codomain. The synthetic multispectral image  $f : S \rightarrow W^3$  composed by the MR images of the figures 1, 2 and 3 is given by:

$$f(\mathbf{u}) = (f_1(\mathbf{u}), f_2(\mathbf{u}), f_3(\mathbf{u}))^T \quad [1]$$

where  $\mathbf{u} \in S$  is the position of the pixel in the image  $f$ , and  $f_1$ ,  $f_2$  and  $f_3$  are the diffusion-weighted MR images. Considering that each pixel  $f_i(\mathbf{u})$  is approximately proportional to the signal of the corresponding voxel as follows (Castano-Moraga et al., 2006):

$$f_i(\mathbf{u}) = K\rho(\mathbf{u})e^{-T_E/T_2(\mathbf{u})}e^{-b_i D_i(\mathbf{u})}, \quad [2]$$

where  $D_i(\mathbf{u})$  is the nuclear spin diffusion coefficient measured after the  $i$ -th experiment, associated to the voxel mapped in the pixel in position  $\mathbf{u}$ ;  $\rho(\mathbf{u})$  is the nuclear spin density

in the voxel;  $K$  is a constant of proportionality;  $T_2(\mathbf{u})$  is the transversal relaxation time in the voxel;  $T_E$  is the echo time and  $b_i$  is the diffusion exponent, given by (Haacke et al., 1999):

$$b_i = \gamma^2 G_i^2 T_E^3 / 3, \quad [3]$$

where  $\gamma$  is the gyromagnetic ratio and  $G_i$  is the gradient applied during the experiment  $i$ . Figures 1, 2 and 3 show images with diffusion exponents 0 s/mm<sup>2</sup>, 500 s/mm<sup>2</sup> and 1000 s/mm<sup>2</sup>, respectively.

The analysis of DW-MR images is often performed using the resulting ADC map  $f_{\text{ADC}} : S \rightarrow W$ , which is calculated as follows (Basser, 2002):

$$f_{\text{ADC}}(\mathbf{u}) = \frac{C}{b_2} \ln \left( \frac{f_1(\mathbf{u})}{f_2(\mathbf{u})} \right) + \frac{C}{b_3} \ln \left( \frac{f_1(\mathbf{u})}{f_3(\mathbf{u})} \right), \quad [4]$$

where  $C$  is a constant of proportionality.

Considering  $n$  experiments, we can generalize equation 4 as follows:

$$f_{\text{ADC}}(\mathbf{u}) = \sum_{i=2}^n \frac{C}{b_i} \ln \left( \frac{f_1(\mathbf{u})}{f_i(\mathbf{u})} \right). \quad [5]$$

Thus, the ADC map is given by:

$$f_{\text{ADC}}(\mathbf{u}) = C \bar{D}(\mathbf{u}), \quad [6]$$

where  $\bar{D}(\mathbf{u})$  is an ensemble average of the diffusion coefficient  $D(\mathbf{u})$  (Fillard et al., 2006).

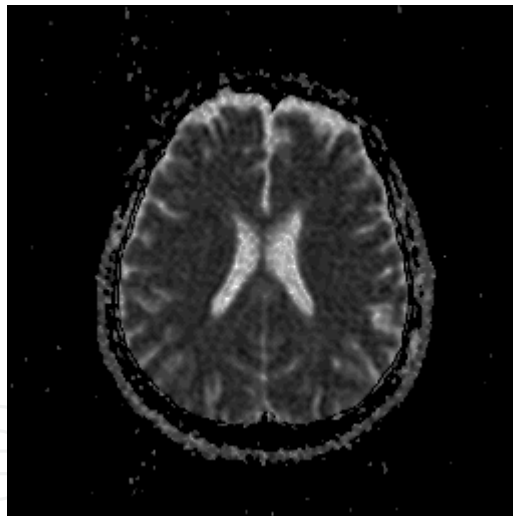


Fig. 4. ADC map calculated from the three diffusion images

Therefore, pixels of the ADC map are proportional to diffusion coefficients in the corresponding voxels. In figure 4 can be seen several artifacts associated to presence of noise. In regions of image where signal-to-noise ratio is poor (let us say,  $s/n \approx 1$ ), the ADC map produces artifacts as consequence of the calculation of logarithms (see equations 4 and 5). Consequently, pixels of the ADC map not necessarily correspond to diffusion coefficients but *apparent* diffusion coefficients, once several pixels indicate high diffusion rates in voxels in empty areas or in very solid areas, e.g. bone in the cranial box, as can be seen in figure 4. This fact generates a considerable degree of uncertainty about the values inside brain area.



In this work we present an alternative to the analysis of the ADC map: the multispectral analysis of the image  $f: S \rightarrow W^3$  using methods based on neural networks as an alternative that could be easily extended to other diffusion-weighted images than cerebral ones. The proposed analysis is performed using the Objective Dialectical Classifier, presented in the following section.

## 2.2 Classification using the Objective Dialectical Method

Objective Dialectical Classifiers (ODC) are an adaptation of Dialectics, as defined in the Philosophy of Praxis, to tasks of classification (Gramsci, 1992a; Gramsci, 1992b). This means that the feature vectors are mounted and considered as vectors of conditions. Specifically, once they are applied to the inputs of the dialectical system, their coordinates will affect the dynamics of the contradictions among the integrating dialectical poles. Hence, the integrating poles model the recognized classes at the task of non-supervised classification.

Therefore, an ODC is in fact an adaptable and evolutionary-based non-supervised classifier where, instead of supposing a predetermined number of classes, we can set an initial number of classes (dialectical poles) and, as the historical phases happen (as a result of pole struggles and revolutionary crises), some classes are eliminated, others are absorbed, and a few others are generated. At the end of the training process, the system presents a number of statistically significant classes present in the training set and, therefore, a feasible classifier associated to the final state of the dialectical system.

To accelerate the convergence of the dialectical classifier, we have removed the operator of pole generation, present at the revolutionary crises. However, it could be beneficial to the classification method, once such operator is a kind of diversity generator operator. The solution found can then be compared to other sort of evolutionary-based image classifiers.

The following algorithm is a possible implementation of the training process of the objective dialectical classifier, used in this work:

- 1 Set the following initial parameters:
  - 1.1 Number of historical phases,  $n_P$ ;
  - 1.2 Length of each historical phase,  $n_H$ ;
  - 1.3 Desired final number of poles,  $n_{C,f}$ ;
  - 1.4 Step of each historical phase,  $0 < \eta(0) < 1$ ;
  - 1.5 Maximum crisis,  $0 \leq \chi_{\max} \leq 1$ ;
  - 1.6 Initial number of poles  $\#\Omega(0) = n_C(0)$ , defining the initial set of poles:  $\Omega(0) = \{C_1(0), C_2(0), \dots, C_{n_C(0)}(0)\}$ .
- 2 Set the following thresholds:
  - 2.1 Minimum force,  $0 \leq f_{\min} \leq 1$ ;
  - 2.2 Minimum contradiction,  $0 \leq \delta_{\min} \leq 1$ .
- 3 Initialize the weights  $w_{i,j}(0)$ , where  $1 \leq i \leq n_C(0)$  and  $1 \leq j \leq n$ .
- 4 Let  $\#\Omega(t)$  be the cardinality of  $\Omega(t)$ , repeat until  $n_P$  iterations or  $\#\Omega(t) = n_{C,f}$ :
  - 4.1 Repeat until  $n_H$  iterations:
    - 4.1.1 Initialize the measures of force  $f_i = 0$ , for  $1 \leq i \leq n_C(t)$ .
    - 4.1.2 For all vectors of conditions

$$\mathbf{x} = (x_1, x_2, \dots, x_n)^T$$

of the input set  $\Psi = \{\mathbf{x}^{(l)}\}_{l=1}^L$ , repeat:

4.1.2.1 Compute the values of the anticontradiction functions:

$$g_i(\mathbf{x}) = e^{-\|\mathbf{x} - \mathbf{w}_i\|},$$

where  $1 \leq i \leq n_C(t)$ .

4.1.2.2 Calculate  $g_{\max}$ :

$$g_{\max} = \max\{g_1(\mathbf{x}), g_2(\mathbf{x}), \dots, g_{n_C(t)}(\mathbf{x})\}.$$

4.1.2.3 Calculate the index  $k(t)$  of the winner class:

$$g_i = g_{\max} \Rightarrow k(t) = i.$$

4.1.2.4 Adjust the weights of the winner pole:

$$w_{i,j}(t+1) = \begin{cases} w'_{i,j}(t), & i = k(t) \\ w_{i,j}(t), & i \neq k(t) \end{cases},$$

where

$$w'_{i,j}(t) = w_{i,j}(t) + \eta(t)(x_j(t) - w_{i,j}(t)).$$

4.1.2.5 Update the measure of force of the integrating poles:

$$f_i(t+1) = \begin{cases} f_i(t) + 1, & i = k(t) \\ f_i(t), & i \neq k(t) \end{cases}.$$

4.1.3 Quantitative changing:  $\Omega(t+1) = \Omega(t)$ .

4.2 Calculate the normalized measures of force:

$$\bar{f}_i(t) = \frac{f_i(t)}{\max\{f_j(t)\}_{j=1}^{n_C(t)}},$$

for  $1 \leq i \leq n_C(t)$ .

4.3 Compute the contradictions:

$$\delta_{i,j} = 1 - g_i(\mathbf{w}_j),$$

where  $2 \leq j \leq n_C(t)$ ,  $1 \leq i < j$ , and find the maximum contradiction

$$\delta_{\max} = \max\{\delta_{i,j}, i \neq j\},$$

for  $j = 2, 3, \dots, n_C(t)$  and  $i = 1, 2, \dots, j-1$ .

4.4 Qualitative changing: compute the new set of poles,  $\Omega(t+1)$ :

$$\bar{f}_i(t) > f_{\min} \Rightarrow C_i(t) \in \Omega(t+1),$$

where  $1 \leq i \leq n_C(t)$  and

$$\delta_{i,j} \geq \delta_{\min} \Rightarrow C_i(t), C_j(t) \in \Omega(t+1),$$

$$\delta_{i,j} < \delta_{\min} \Rightarrow C_i(t) \in \Omega(t+1),$$

$$\delta_{i,j} = \delta_{\max} \Rightarrow C_q \in \Omega(t+1),$$

where  $2 \leq j \leq n_C(t)$ ,  $1 \leq i < j$ ,  $q = n_C(t) + 1$ , and

$$w_{q,k}(t+1) = \begin{cases} w_{i,k}(t+1), & k \bmod 2 = 1 \\ w_{j,k}(t+1), & k \bmod 2 = 0 \end{cases},$$

for  $k = 1, 2, \dots, n$ .

4.5 Add the crisis effect to the weights of the new integrating poles of the dialectical system:

$$w_{i,j}(t+2) = w_{i,j}(t+1) + \chi_{\max} G(0, 1),$$

for  $1 \leq i \leq n_C(t+1)$ ,  $1 \leq j \leq n$  and  $\Omega(t+2) = \Omega(t+1)$ .



Once the training process is complete, ODC behavior occurs in the same way as any non-supervised classification method. This is clear if we analyze the training process when  $n_P = n_H = 1$ . This transforms the ODC into a k-means method, for instance.

The classification is performed in the following way: given a set of input conditions

$$\mathbf{x} = (x_1, x_2, \dots, x_n)^T,$$

if the dialectical system reaches stabilization when  $\Omega = \{C_1, C_2, \dots, C_{n_C}\}$ , then we apply the following classification rule:

$$g_k(\mathbf{x}) = \max\{g_1(\mathbf{x}), g_2(\mathbf{x}), \dots, g_{n_C}(\mathbf{x})\} \Rightarrow \mathbf{x} \in C_k,$$

where  $1 \leq k \leq n_C$ .

#### 4. Discussion and Results

The ground-truth image was built by the use of a two-degree polynomial network to classify the multispectral image. The training set was assembled using anatomic information obtained from T1, T2 and spin density MR images.

The ODC was trained using an initial system of 10 integrating classes, affected by 3 input conditions, studied during 5 historical 100-length phases, with an initial historical step  $\eta_0 = 0.1$ . At the stages of revolutionary crisis we considered a minimum measure of force of 0.01, minimum contradiction of 0.25 and maximum crisis of 0.25. The stop criterion was the final number of classes, in our case, 4 classes. The input conditions are the values of pixels on each of the 3 bands.

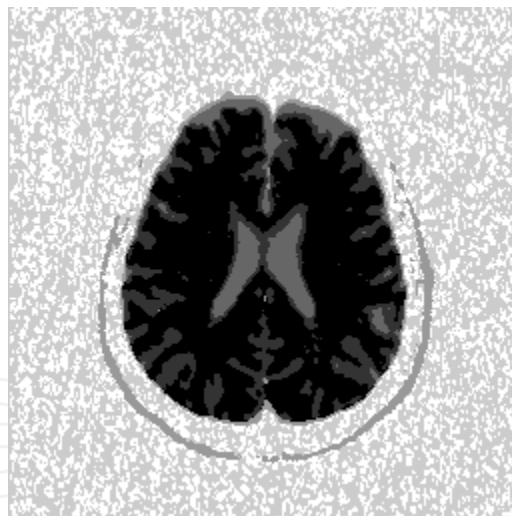


Fig. 5. Classification result by ODC before manual post-rotation

ODC training resulted in 6 classes, reduced to 4 classes after a manual post-rotation that merged the 3 classes external to the cranium, i.e. background, noise and cranial box, into a single class, namely background. This post-rotation was performed manually because the 3 populations are statistically different and only conceptually can they be reunited in a unique class. Figures 5 and 6 show the resulting classification by ODC before and after manual post-rotation, respectively.

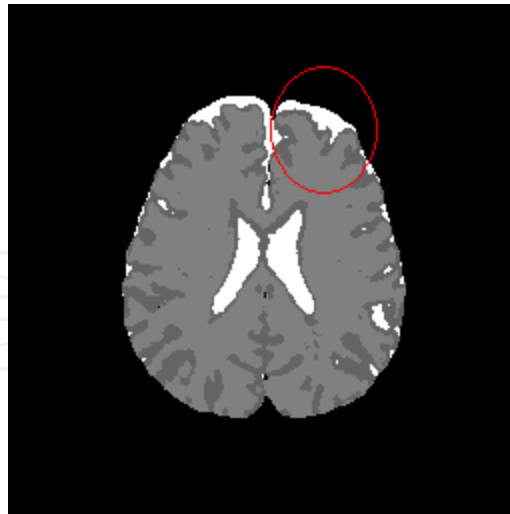


Fig. 6. Classification result by ODC after manual post-rotation. White areas are indication of cerebrospinal fluid, once gray and dark gray areas indicate white and gray matter, respectively. The damaged area is emphasized.

From Figure 6 we can see that ODC was able to make a distinction between white and gray matter, the latter present in the interface between cerebrospinal fluid and white matter. Notice that an increased damaged area is highlighted. The classification fidelity was measured using the morphological similarity index, with structure element square  $3 \times 3$ , and Wang's index (Wang & Bovik, 2002), yielding 0.9877 and 0.9841, respectively.

The objective dialectical classifier could identify statistically significant classes in situations where the initial number of classes is not well known. It makes possible the detection of relevant classes and even singularities beyond the initial prediction made by the medical specialist. It is also able to aid the medical specialist to measure the volumes of interest, in an attempt to establish a correlation of such measuring with the advance of neurodegenerative diseases, such as Alzheimer's, and to differentiate significant alterations in the values of the measured diffusion coefficients. ODC can qualitatively and quantitatively improve the analysis of the human medical specialist.

The objective dialectical classifier can be used in problems where the number of statistically significant classes is not well known, or in problems where we need to find a sub-optimum clustering map to be used for classification. The task of finding a suboptimum clustering map is empirical, once it is necessary to analyze the behavior of the training process as a function of the several parameters of the method, namely the minimum force, the minimum contradiction, the initial number of classes, the number of historical phases, the duration and the historical step of each historical phase, that is, all the initial parameters of the proposed segmentation algorithm. Nevertheless, it is important to emphasize that, as the number of initial parameters is given, the classification performance of the dialectical classifiers is highly dependent on these initial parameters.

The objective dialectical method starts a new family of evolutionary methods inspired in the Philosophy, especially the Philosophy of Praxis, which can be used to solve both classical and new image analysis problems, such as the one presented in our case study, that is, biomedical image analysis and processing.

We conclude by stating that philosophical thought is a great source of inspiration for constructing new computational intelligent methods highly applicable to Biomedical Engineering problems, since we are simply returning to our original source of knowledge: Philosophy as an important tool to a better understanding of nature and ourselves in a larger sense.

## 5. References

- Ewers, M.; Teipel, S.J.; Dietrich, O.; Schönberg, S.O.; Jessen, F.; Heun, R.; Scheltens, P.; van de Pol, L.; Freymann, N.R.; Moeller, H.J. & Hampela, H. (2006). Multicenter assessment of reliability of cranial MRI. *Neurobiology of Aging*, 27, 1051-1059
- Friman, O.; Farneback, G. & Westin, C.F. (2006). A bayesian approach for stochastic white matter tractography. *IEEE Transactions on Medical Imaging*, 25, 8, 965-978
- Haacke, E.M.; Brown, R.W.; Thompson, M.R. & Venkatesan, R. (1999). *Magnetic Resonance Imaging: Physical Principles and Sequence Design*, Wiley-Liss
- Marx, K. (1980). Critique of Hegel's dialectics and philosophy. In *Economic and Philosophic Manuscripts of 1844*, International Publishers
- Engels, F. (1975). The role played by labor in the transition from ape to man. In *Collected Works of Karl Marx and Frederik Engels*, International Publishers
- Gramsci, A. (1992). Introduction to the Study of Philosophy and Historical Materialism. In *Prison Notebooks*, Columbia University
- Gramsci, A. (1992). Some Problems in the Study of the Philosophy of Praxis. In *Prison Notebooks*, Columbia University
- Bobbio, N. (1990). *Saggi su Gramsci*, Feltrinelli, Milano
- Thornley, C. & Gibb, F. (2007). A dialectical approach to information retrieval. *Journal of Documentation*, 63, 5, 755-764
- Rosser Jr, J.B. (2000). Aspects of dialectics and nonlinear dynamics. *Cambridge Journal of Economics*, 24, 3, 311-324
- Hayasaka, S.; Du, A.T.; Duarte, A.; Kornak, J.; Jahng, G.H.; Weiner, M.W. & Schuff, N. (2006). A non-parametric approach for co-analysis of multi-modal brain imaging data: Application to Alzheimer's disease. *NeuroImage*, 30, 768-779
- Santos, W.P.; Souza, R.E. & Santos-Filho, P.B. (2007). Evaluation of Alzheimer's disease by analysis of MR images using multilayer perceptrons and Kohonen SOM classifiers as an alternative to the ADC maps. In *29th Annual International Conference of the IEEE Engineering in Medicine and Biology Society*, Lyon, France, EMBS-IEEE
- Castano-Moraga, C.A.; Lenglet, C.; Deriche, R. & Ruiz-Alzola, J. (2006). A Fast and Rigorous Anisotropic Smoothing Method for DT-MRI. In *Proceedings of the ISBI 2006*, CS-IEEE
- Basser, P.J. (2002). Diffusion-Tensor MRI: Theory, Experimental Design, and Data Analysis. In *Proceedings of the 2nd Joint EMBS BMES Conference*, 1165-1166, Houston, USA,, EMBS-IEEE-BMES
- Fillard, P.; Arsigny, V.; Pennec, X. & Ayache, N. (2006). Clinical DT-MRI estimations, smoothing and fiber tracking with log-Euclidean metrics. In *Proceedings of the ISBI 2006*, CS-IEEE
- Wang, Z. & Bovik, A.C. (2002). A universal image quality index. *IEEE Signal Processing Letters*, 9



## **Recent Advances in Biomedical Engineering**

Edited by Ganesh R Naik

ISBN 978-953-307-004-9

Hard cover, 660 pages

**Publisher** InTech

**Published online** 01, October, 2009

**Published in print edition** October, 2009

The field of biomedical engineering has expanded markedly in the past ten years. This growth is supported by advances in biological science, which have created new opportunities for development of tools for diagnosis and therapy for human disease. The discipline focuses both on development of new biomaterials, analytical methodologies and on the application of concepts drawn from engineering, computing, mathematics, chemical and physical sciences to advance biomedical knowledge while improving the effectiveness and delivery of clinical medicine. Biomedical engineering now encompasses a range of fields of specialization including bioinstrumentation, bioimaging, biomechanics, biomaterials, and biomolecular engineering. Biomedical engineering covers recent advances in the growing field of biomedical technology, instrumentation, and administration. Contributions focus on theoretical and practical problems associated with the development of medical technology; the introduction of new engineering methods into public health; hospitals and patient care; the improvement of diagnosis and therapy; and biomedical information storage and retrieval. The book is directed at engineering students in their final year of undergraduate studies or in their graduate studies. Most undergraduate students majoring in biomedical engineering are faced with a decision, early in their program of study, regarding the field in which they would like to specialize. Each chosen specialty has a specific set of course requirements and is supplemented by wise selection of elective and supporting coursework. Also, many young students of biomedical engineering use independent research projects as a source of inspiration and preparation but have difficulty identifying research areas that are right for them. Therefore, a second goal of this book is to link knowledge of basic science and engineering to fields of specialization and current research. The editor would like to thank the authors, who have committed so much effort to the publication of this work.

### **How to reference**

In order to correctly reference this scholarly work, feel free to copy and paste the following:

Wellington Pinheiro dos Santos, Francisco Marcos de Assis, Ricardo Emmanuel de Souza and Plinio Bezerra dos Santos Filho (2009). Dialectical Classification of MR Images for the Evaluation of Alzheimer's Disease, Recent Advances in Biomedical Engineering, Ganesh R Naik (Ed.), ISBN: 978-953-307-004-9, InTech, Available from: <http://www.intechopen.com/books/recent-advances-in-biomedical-engineering/dialectical-classification-of-mr-images-for-the-evaluation-of-alzheimer-s-disease>

**INTECH**  
open science | open minds

### **InTech Europe**

University Campus STeP Ri

### **InTech China**

Unit 405, Office Block, Hotel Equatorial Shanghai

[www.intechopen.com](http://www.intechopen.com)

Slavka Krautzeka 83/A  
51000 Rijeka, Croatia  
Phone: +385 (51) 770 447  
Fax: +385 (51) 686 166  
[www.intechopen.com](http://www.intechopen.com)

No.65, Yan An Road (West), Shanghai, 200040, China  
中国上海市延安西路65号上海国际贵都大饭店办公楼405单元  
Phone: +86-21-62489820  
Fax: +86-21-62489821

IntechOpen

IntechOpen

© 2009 The Author(s). Licensee IntechOpen. This chapter is distributed under the terms of the [Creative Commons Attribution-NonCommercial-ShareAlike-3.0 License](https://creativecommons.org/licenses/by-nc-sa/3.0/), which permits use, distribution and reproduction for non-commercial purposes, provided the original is properly cited and derivative works building on this content are distributed under the same license.

IntechOpen

IntechOpen