

We are IntechOpen, the world's leading publisher of Open Access books Built by scientists, for scientists

6,900

Open access books available

185,000

International authors and editors

200M

Downloads

Our authors are among the

154

Countries delivered to

TOP 1%

most cited scientists

12.2%

Contributors from top 500 universities



WEB OF SCIENCE™

Selection of our books indexed in the Book Citation Index
in Web of Science™ Core Collection (BKCI)

Interested in publishing with us?
Contact book.department@intechopen.com

Numbers displayed above are based on latest data collected.
For more information visit www.intechopen.com



New Results in Catheter Ablation for Atrial Fibrillation

Nándor Szegedi and László Gellér

Abstract

Pulmonary vein isolation (PVI) is the cornerstone of rhythm-control therapy for atrial fibrillation (AF). A few years ago, contact force-sensing ablation catheters (CFSAC) were introduced. Nowadays the use of CFSAC became a part of the everyday practice. The durability of PVI depends much on the accurate lesion creation. The recently developed techniques (ablation index, CLOSE protocol) may facilitate the procedure in terms of achieving durable PVI which has already been confirmed by randomized trials. In this chapter, we would like to introduce the theoretical background of PVI and compare different techniques (radiofrequency point-by-point, cryoballoon, additional ablation lines for persistent AF) with special highlight on the importance of durable PVI.

Keywords: pulmonary vein isolation, atrial fibrillation, ablation, point-by-point, CLOSE protocol, cryoballoon

1. Introduction

Atrial fibrillation (AF) is the most common sustained arrhythmia. AF is associated with a higher risk of mortality than the general population [1]. It is one of the major causes of stroke, heart failure, sudden death, and cardiovascular morbidity in the world [2]. Thus, appropriate management of this arrhythmia and underlying diseases is of high importance. Besides stroke prevention with therapeutic anticoagulation, the rate-control or rhythm-control treatment is the basis of AF management.

Pulmonary vein isolation (PVI) is the cornerstone of rhythm-control therapy for atrial fibrillation [2, 3]. A few years ago, contact force-sensing ablation catheters (CFSAC) were introduced. Nowadays the use of CFSAC became a part of the everyday practice [4–8]. The durability of PVI depends much on the accurate lesion creation. The recently developed techniques (ablation index, CLOSE protocol) may facilitate the procedure in terms of achieving durable PVI which has already been confirmed by prospective trials [9–12]. In this chapter, we will introduce the theoretical background of PVI and compare different ablation techniques (radiofrequency point-by-point, cryoballoon, additional ablation lines for persistent AF) with special highlight on the importance of durable PVI.

2. Pulmonary vein isolation

2.1 Theoretical background of pulmonary vein isolation

The exact mechanism of atrial fibrillation for the individual patients is not well understood, and it is still a topic of intensive research nowadays. It seems that in most of the patients, the pulmonary veins and surrounding structures play an important role in the pathophysiology. The first cornerstone research was presented by Haissaguerre et al., where they found that electrical firing from the pulmonary veins (PVs) may have an important role in the initiation of atrial fibrillation paroxysms [13] (**Figure 1**).

Jais et al. showed distinctive electrophysiological properties of pulmonary veins in patients with AF compared with healthy patients' PVs. The main difference is the short or extremely short refractory period of the PVs which is likely to play a major role in the arrhythmogenesis [14]. Moreover, episodes of AF may shorten the effective refractory period of the atria and the PVs, which may promote recurrent and longer episodes of AF ("AF begets AF") [15, 16]. These studies are supplemented by another important finding by De Ponti et al. as they showed with high-density mapping of the PVs that majority of ectopic beats have a multifocal pattern and relatively proximal origin [17].

Besides the pulmonary veins, multiple pathophysiological factors may play a role in the mechanism of atrial fibrillation, like ligament of Marshall, vagal ganglia, micro-reentrant circuits, and spiral/rotational activities [18–21].

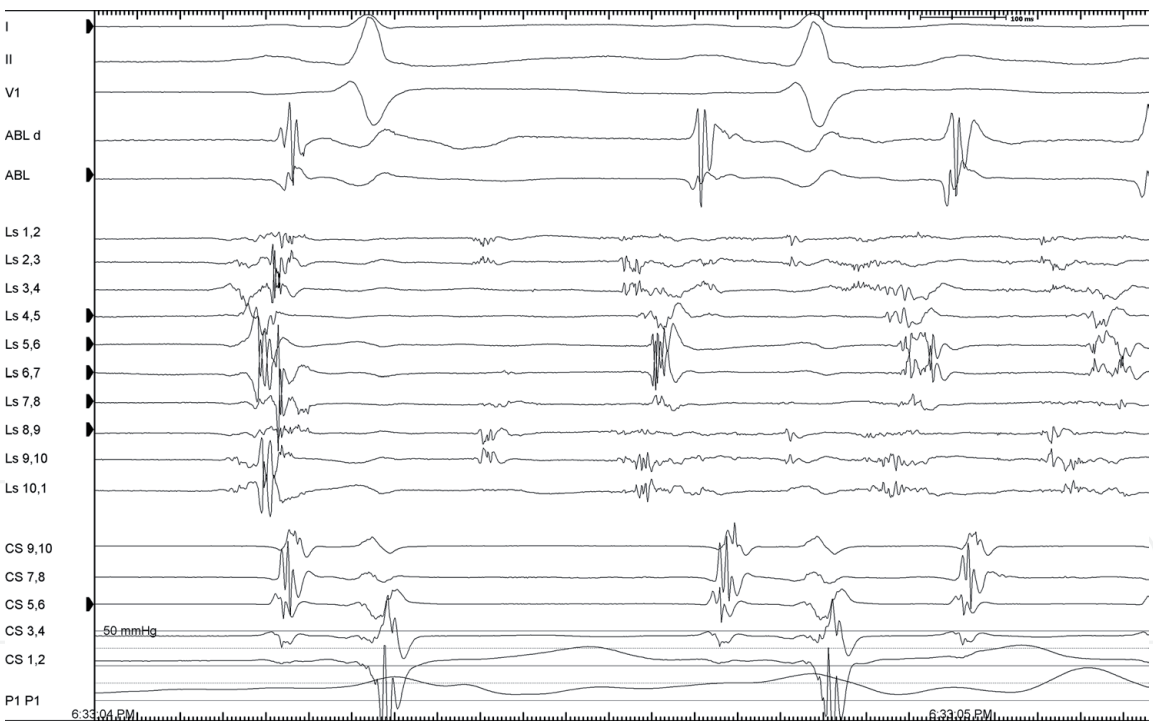


Figure 1.
High-frequency electrical activity in the right superior pulmonary vein registered on the Lasso (Ls) catheter.

2.2 Pulmonary vein isolation procedures

The two most frequently used ablation technologies for pulmonary vein isolation are radiofrequency point-by-point method which leads to coagulation necrosis by heating and single-shot cryoballoon ablation which leads to tissue necrosis by freezing.

PVI with radiofrequency ablation requires limited use of fluoroscopy, because catheter guidance is achieved with the use of an electroanatomical mapping system, but the approach requires extensive training due to the need for a more sophisticated catheter manipulation.

PVI with cryoballoon requires more extensive fluoroscopic guidance to position the balloon catheter at the pulmonary veins. On the other hand, the cryoballoon was developed to create a circular lesion around each pulmonary vein in a relatively simple manner, and thus it is less operator dependent.

Circumferential ablation around the PVs may have ablation-related benefits beyond pulmonary vein isolation, including concomitant ganglionated plexus modification and modification of other substrates located near the PVs [22].

2.2.1 Cryoballoon ablation

Pulmonary vein isolation can be reached with a balloon catheter by the occlusion of the pulmonary veins, causing tissue necrosis via cryothermal energy around antral orifice of the vessels. Occlusion of the pulmonary vein by the cryoballoon is tested by means of contrast injection and fluoroscopic examination (**Figure 2**). If the injection of contrast agent verifies the accurate occlusion of the pulmonary vein ostium, the freezing can be started. The need for fluoroscopic imaging for each PVs may contribute to a prolonged fluoroscopic time and dose.

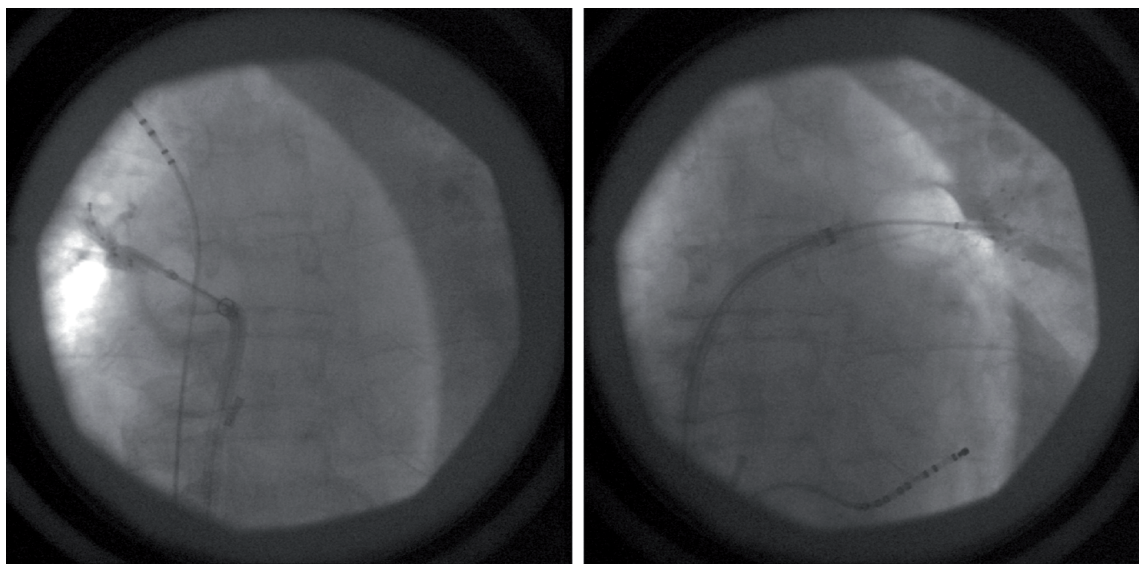


Figure2.
Right side: contrast injection in the right inferior pulmonary vein; decapolar catheter is placed in the superior vena cava to perform phrenic nerve pacing. Left side: contrast injection in the left superior pulmonary vein; decapolar catheter is placed in the coronary sinus.

First-generation cryoballoons deliver ablation only via the equator of the balloon. Freeze AF randomized trial found that first-generation cryoballoon was non-inferior as compared with the radiofrequency ablation. There was a higher rate of adverse events driven by the higher incidence of transient phrenic nerve palsy [23].

Second-generation cryoballoons were introduced to overcome some of these disadvantages. The number of injection ports has been doubled (from four to eight), and have been positioned more distally on the catheters' shaft resulting in a larger and more uniform zone of freezing on the balloons' surface [24] (**Figure 3**). The improved thermodynamic characteristics of the second-generation cryoballoon lead to a higher rate of single shot-PVI and a better chronic lesion durability. This high rate of durable PV isolation is anticipated to translate to improved clinical outcome [25].

Second-generation cryoballoon was found to be non-inferior to radiofrequency ablation in the FIRE and ICE randomized trial with respect to efficacy for the

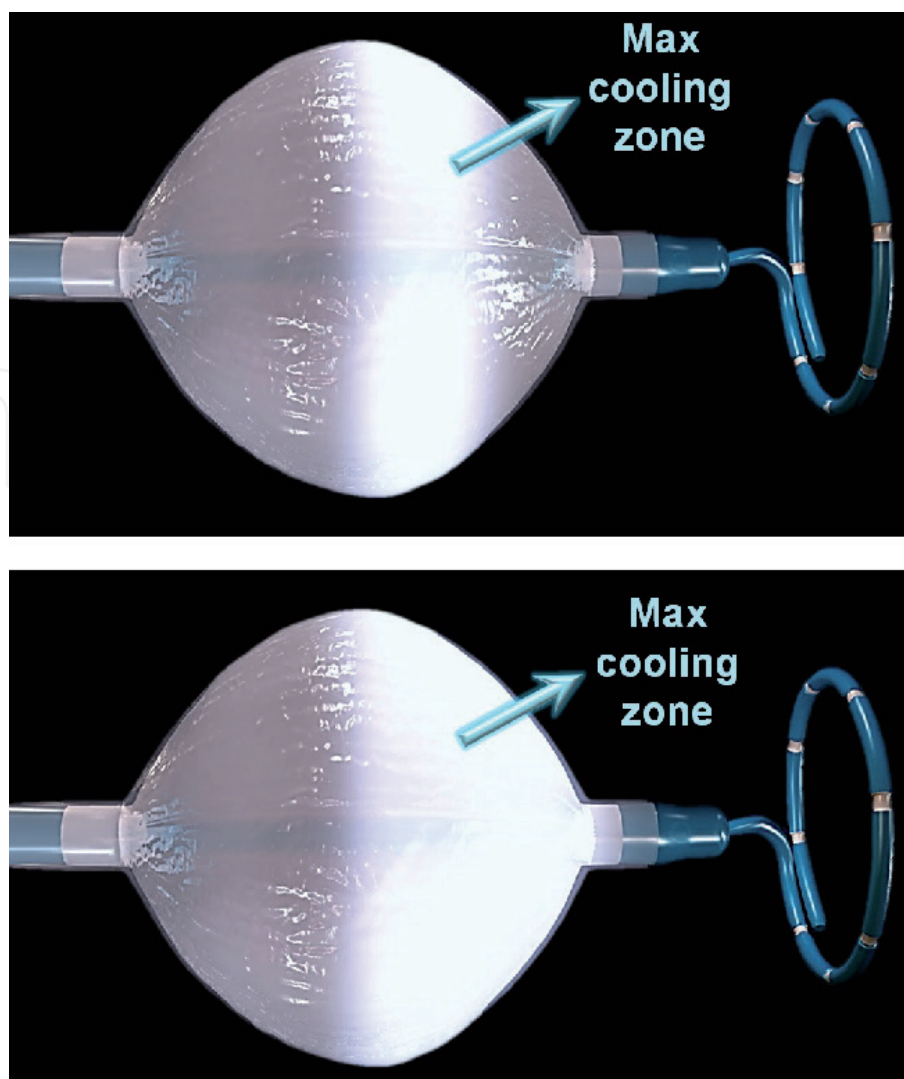


Figure 3.

First (upper part) and second (lower part) generation cryoballoons. First-generation cryoballoon produces an annular freezing zone at the balloon's equator. Second-generation cryoballoon has broader and more homogenous freezing zone, thus providing freezing at the whole distal hemisphere of the balloon.

treatment of patients with drug-refractory paroxysmal atrial fibrillation. There was also no significant difference between the two methods with regard to overall safety. Phrenic nerve injury was the most common safety event in the cryoballoon group [26]. The enlarged volume of tissue freezing may cause a trend toward higher incidence of phrenic nerve palsy in the case of the second-generation cryoballoons. However, these events are transient in most of the cases [27, 28].

A growing evidence suggests that second-generation cryoballoon is also safe and effective in patients with persistent AF [29, 30]. In persistent AF the isolation of the left atrial appendage as an adjunct to PVI may improve 1-year outcomes compared with the PVI-only strategy using cryoballoon [31].

However, the cryoballoon may be less effective in some anatomical variations of the pulmonary veins such as long left common trunk, additional pulmonary veins, or in the case of a more oval PV orifice [32, 33]. In some cases the complication rates may also differ in pulmonary venous anatomical variations [34].

2.2.2 Radiofrequency point-by-point ablation

Circumferential pulmonary vein isolation with radiofrequency ablation was the first type of ablation that was proven to be superior compared with the

antiarrhythmic drug treatment [35]. It requires limited use of fluoroscopy, because catheter guidance is achieved with the use of an electroanatomical mapping system. The disadvantage of the technology is that the approach requires extensive training due to the need for a more accurate catheter manipulation. It is both proven to be effective in paroxysmal and persistent AF in terms of reducing symptoms related to AF [36, 37]. Moreover it may have a positive effect on mortality in heart failure patients [38–40].

2.2.2.1 Radiofrequency point-by-point ablation with contact force-sensing catheters

The clinical efficacy of catheter ablation of AF remained limited by difficulty in achieving durable pulmonary vein isolation. Suboptimal catheter tip-to-tissue contact force (CF) during lesion delivery may result in a reduced clinical efficacy. Despite the fact that acute PVI is nearly universally achieved, recurrences of atrial arrhythmias after AF ablation are common, and recurrences are usually due to PV reconnection and indicate insufficient lesion formation during the initial ablation.

A few years ago, contact force-sensing ablation catheters (CFSAC) have been introduced in the clinical practice. It has been shown that the contact force between the catheter tip and the target tissue is a key factor to a safe and effective lesion formation. Insufficient CF may result in an ineffective lesion, whereas excessive CF may result in complications such as heart wall perforation, steam pop, thrombus formation, or esophageal injury. High CF values may occur during catheter manipulation and not just during ablation, suggesting that measuring CF may provide additional useful information to the operator for safe catheter manipulation.

Catheter ablation using real-time CF technology was shown to be safe for the treatment of supraventricular tachycardias and AF [5, 6]. Pulmonary vein isolation with the use of contact force information results in a shorter procedure duration and a lower rate of AF recurrence after 12 months than conventional PVI without this information [41]. Analysis of the first trials with CFSACs showed that CF during catheter ablation for AF correlates with clinical outcome. Arrhythmia control is best achieved when ablation lesions are placed with an average CF of >20 g, whereas clinical failure is noted with an average CF of <10 g [8, 42].

The EFFICAS I multicenter study was to demonstrate the correlation between CF parameters during initial procedure and the incidence of isolation gaps at a repeated left atrial procedure at 3 months. To characterize the effect of CF applied over time, the system automatically detects the beginning and end of RF current delivery and calculates the force-time integral (FTI) defined as the total CF integrated over the time of RF delivery. Ablations with minimum FTI <400 g showed increased likelihood for reconnection. Thus, optimal CF parameter recommendations became a target CF of 20 g and a minimum FTI of 400 g for each lesion [7]. These recommendations together with contiguous lesion deployment were then confirmed by the EFFICAS II study as procedures with the abovementioned criteria resulted in more durable PVI [4].

2.2.2.2 Radiofrequency point-by-point ablation guided by ablation index

The routine use of CFSACs improved the arrhythmia-free survival after PVI; however, the recurrence rate remained substantial.

Ablation index (AI) incorporates CF, power, and time in a weighted formula and predicts lesion depth. It works together with SmartTouch catheter and CARTO system (**Figures 4 and 5**).

$$\text{Ablation Index} = \left(K * \int_0^t CF^a(\tau) P^b(\tau) d\tau \right)^c$$

Figure 4.
Mathematical formula for the ablation index.

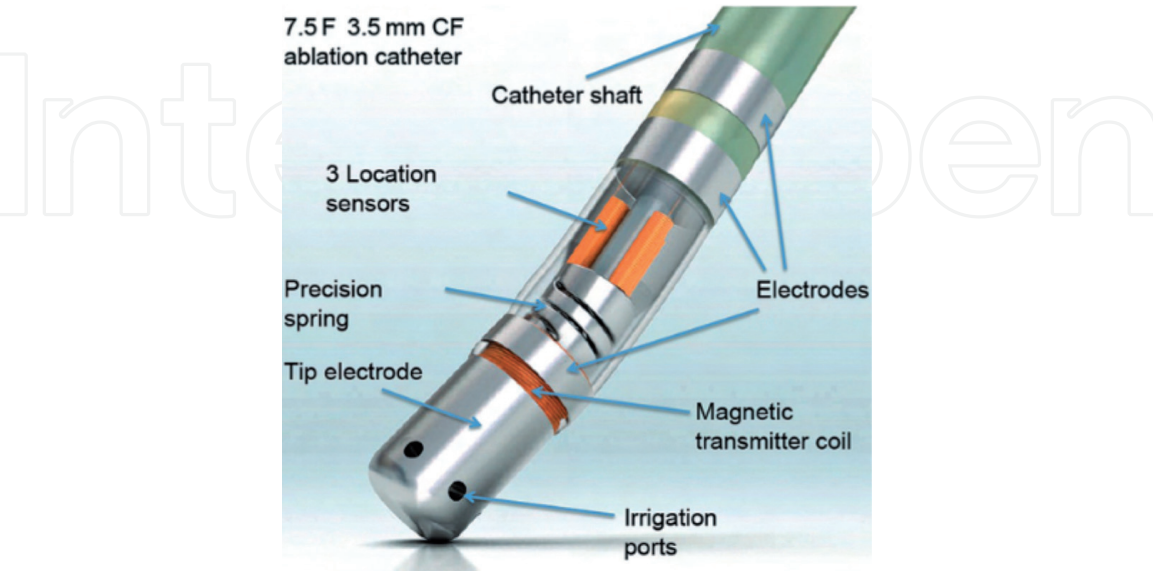


Figure 5.
SmartTouch catheter. This is a 7.5 French, 3.5-mm-irrigated-tip ablation catheter. Catheter tip contact force information and direction is measured by three location sensors within the shaft and the degree of spring bending via a magnetic transmitter at the catheter tip. The catheter and information are integrated into the Carto® 3 mapping system and can be displayed to the operators.

The analysis of PVIs guided by AI resulted in the development of the “CLOSE protocol.” The CLOSE protocol is a new approach aiming to enclose the PVs with contiguous and optimized radiofrequency lesions by targeting an inter-lesion distance (ILD) ≤ 6 mm and AI ≥ 400 at the posterior wall and ≥ 550 at the anterior wall [11]. In the case of chest pain or intraesophageal temperature rise $>38.5^{\circ}\text{C}$ during posterior wall ablation, energy delivery may be stopped at an AI of 300. Target AI values can be reached with higher-energy applications as well (**Figures 6 and 7**).

The use of CLOSE protocol was associated with high incidence of first-pass isolation (98%). Overall, single-procedure arrhythmia-free survival was 91% at 1 year without antiarrhythmic drug treatment. These findings are in line with the hypothesis that avoiding weak links within the deployed radiofrequency circle is the key to durable PVI and clinical success. These procedural results do not compromise safety and are associated with relatively short procedure and ablation times [12].

The optimal AI target values are not determined yet, and values recommended by the CLOSE protocol may overshoot. Lee et al. presented that PVIs with AI target values of ≥ 450 at the anterior/roof segments and of ≥ 350 at the posterior/inferior/carina segments are optimal AI thresholds for avoiding acute pulmonary vein reconnection [9]. In the left atrium, the AI-impedance relationship plateaus from 430 AI for the SmartTouch catheter, suggesting ablation beyond this value, have minimal additional biophysical benefit [43]. Solimene et al. found that radiofrequency energy targeting inter-lesion distance ≤ 6 mm and ablation index of 330–350 at posterior wall and 400–450 at anterior wall produces similar good results and low complication rates [44]. Another study found that no reconnection was seen where the minimum AI value was ≥ 370 for posterior/inferior segments and ≥ 480 for anterior/roof segments at repeat electrophysiology study [45].

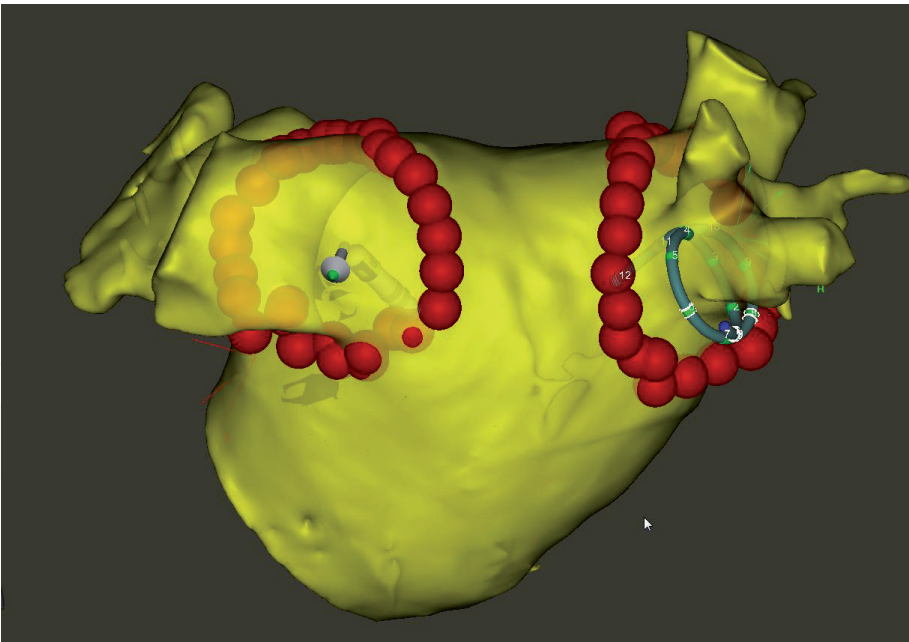


Figure 6.
Pulmonary vein isolation (CT-merged CARTO image) performed with CLOSE protocol. Red ablation tags indicate AI value >400 on the posterior wall and >550 on the anterior wall.

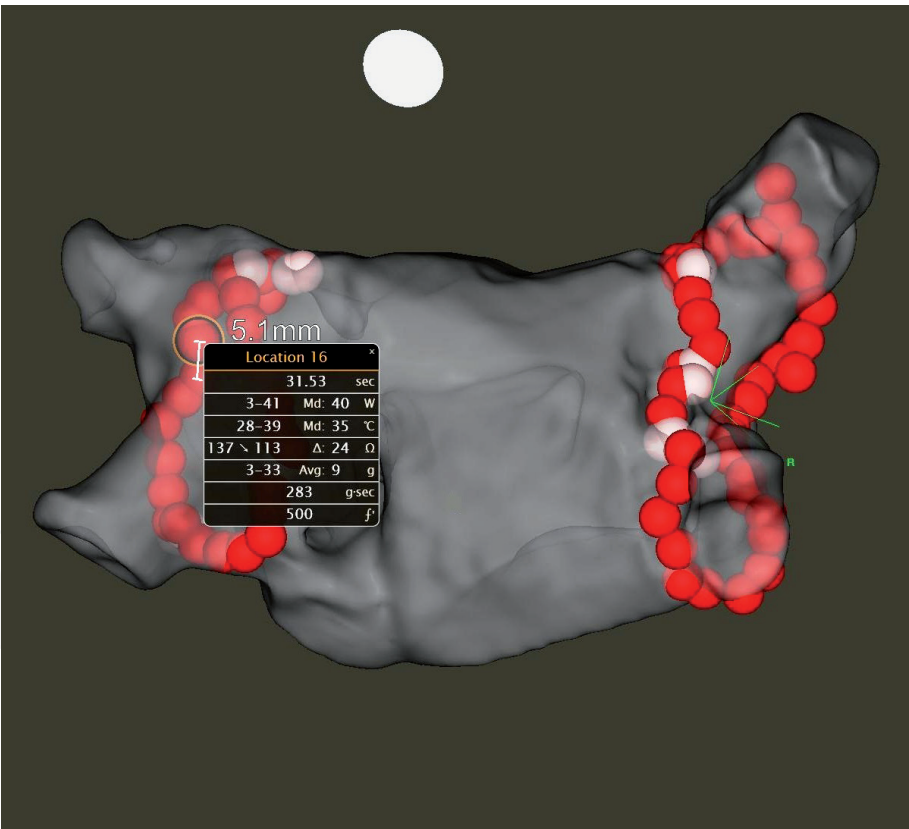


Figure 7.
Pulmonary vein isolation (CARTO, fast anatomical map) performed with CLOSE protocol. Ablation parameters of the highlighted dot (with yellow ring around it) are shown, including application duration, power, temperature, impedance drop, average contact force, force-time integral value, and ablation index value (AI = 500 in this case). The inter-lesion distance between the two marked ablation points (with distance measurement white line between them) is also shown (ILD = 5.1 mm).

The use of AI and small ILD results in a high level of durable PVI and may be also effective in persistent AF. A good clinical outcome can be achieved in the great majority of patients with persistent AF [10].

2.2.2.3 Esophageal temperatures during applications with ablation index

The incidence of endoscopically detected esophageal injury after catheter ablation is high (2–30%), both after PVI guided by cryoballoon and by RF energy [46–49]. High AI target values may further increase the risk of esophageal lesions.

The incidence of esophageal injury on endoscopy after CLOSE-guided PVI is low (1.2%) despite significant intraesophageal temperature rise during the procedure [50]. The most likely explanation of the low incidence after CLOSE PVI is the ablation protocol itself as AI target value on posterior wall is recommended to be reduced to 300 if pain or esophageal temperature rise occurs. Moreover, the high incidence of first-pass isolation results in smaller amount of applications required to reach the complete PVI.

3. Ablation strategies in persistent atrial fibrillation

Persistent AF is usually a more difficult arrhythmia as compared with the paroxysmal AF. Besides the triggers that induce the arrhythmia, usually a complex substrate is also present due to the atrial enlargement and fibrosis. Thus, pulmonary vein isolation alone is generally less effective than in paroxysmal AF [51]. The success rate of catheter ablation might improve with substrate modification techniques such as additional linear lines, ablation of complex fractionated atrial electrograms, and isolation of the left atrial appendage. The value of these techniques is controversial; however, most of the studies that compared PVI to PVI plus substrate modification were performed before the contact force era and in low-volume centers [29, 31, 52–56]. Substrate modification of persistent AF with the ablation of additional lines may be useful if procedure is performed by experienced operators. Kettering et al. found better arrhythmia-free survival in patients with roofline ablation when added to PVI (72 vs. 63%) [57]. Additional mitral isthmus line ablation may also provide a higher success rate as shown by Jais et al. (87 vs. 69%) [58].

4. Our personal approach for atrial fibrillation ablation

Here we shortly summarize our personal approach for PVI that we use in the Electrophysiology Laboratory of the Heart and Vascular Center, Semmelweis University, Budapest.

In case of symptomatic paroxysmal atrial fibrillation, the primary goal is the durable isolation of all pulmonary veins. Before the procedure cardiac CT or MR angiography is performed to evaluate the presence of potential coronary artery disease and to determine the pulmonary venous anatomy. For patients with typical anatomy (four distinct pulmonary veins), we may choose cryoballoon; however, a vast majority of patients are ablated with point-by-point approach with contact force-sensing ablation catheters. For the latter we may use CARTO or EnSite navigation system. For repeated ablations we first check the pulmonary veins, and if there is reconnection, we re-isolate the PVs with CARTO, EnSite, or Rhythmia system. If all the pulmonary veins are found to be isolated, then we try to find and eliminate non-PV triggers such as superior vena cava or coronary sinus.

In the case of symptomatic persistent atrial fibrillation, the first procedure is also pulmonary vein isolation similar to the paroxysmal cases. For repeated ablations besides re-isolation of PVs, we may use additional ablation lines such as left atrial roofline, posterior line, mitral isthmus line, and in the right atrium the cavo-tricuspidal isthmus line. If the recurrent arrhythmia is a macro-reentrant

atrial tachycardia, we perform an electroanatomical activation map to depict the tachycardia circuit and to find the optimal ablation target(s).

5. Conclusion

Pulmonary vein isolation (PVI) is the cornerstone of rhythm-control therapy for atrial fibrillation (AF). A few years ago, new technologies such as cryoballoon and contact force-sensing ablation catheters were introduced. The use of these technologies became the part of the everyday practice. The routine use of CF ablation catheters and cryoballoons improved the arrhythmia-free survival after PVI; however, the recurrence rate remained substantial. The durability of PVI depends much on the accurate lesion creation. The recently developed techniques such as second-generation cryoballoon, ablation index, and CLOSE protocol may result in a higher rate of both acute PVI and thus a more durable lesion creation. The CLOSE protocol is a new approach aiming to enclose the PVs with contiguous and optimized radiofrequency lesions. This high rate of durable PV isolation is anticipated to translate to improved clinical outcome for both paroxysmal and persistent atrial fibrillation. Substrate modification of persistent AF with the ablation of additional lines may be useful if procedure is performed by experienced operators.

Conflict of interest

The authors declare no conflict of interest.

Author details

Nándor Szegedi and László Gellér*
Heart and Vascular Center, Semmelweis University, Budapest, Hungary

*Address all correspondence to: laszlo.geller@gmail.com

IntechOpen

© 2019 The Author(s). Licensee IntechOpen. This chapter is distributed under the terms of the Creative Commons Attribution License (<http://creativecommons.org/licenses/by/3.0>), which permits unrestricted use, distribution, and reproduction in any medium, provided the original work is properly cited. 

References

- [1] Benjamin EJ, Wolf PA, D'Agostino RB, Silbershatz H, Kannel WB, Levy D. Impact of atrial fibrillation on the risk of death: The Framingham heart study. *Circulation*. 1998;**98**(10):946-952
- [2] Kirchhof P, Benussi S, Kotecha D, Ahlsson A, Atar D, Casadei B, et al. ESC guidelines for the management of atrial fibrillation developed in collaboration with EACTS. *European Heart Journal*. 2016;**37**(38):2893-2962
- [3] Packer DL, Mark DB, Robb RA, Monahan KH, Bahnson TD, Poole JE, et al. Effect of catheter ablation vs antiarrhythmic drug therapy on mortality, stroke, bleeding, and cardiac arrest among patients with atrial fibrillation: The CABANA randomized clinical trial. *JAMA*. 2019;**321**(13):1261-1274
- [4] Kautzner J, Neuzil P, Lambert H, Peichl P, Petru J, Cihak R, et al. EFFICAS II: Optimization of catheter contact force improves outcome of pulmonary vein isolation for paroxysmal atrial fibrillation. *Europace*. 2015;**17**(8):1229-1235
- [5] Kuck KH, Reddy VY, Schmidt B, Natale A, Neuzil P, Saoudi N, et al. A novel radiofrequency ablation catheter using contact force sensing: Toccata study. *Heart Rhythm*. 2012;**9**(1):18-23
- [6] Natale A, Reddy VY, Monir G, Wilber DJ, Lindsay BD, McElderry HT, et al. Paroxysmal AF catheter ablation with a contact force sensing catheter: Results of the prospective, multicenter SMART-AF trial. *Journal of the American College of Cardiology*. 2014;**64**(7):647-656
- [7] Neuzil P, Reddy VY, Kautzner J, Petru J, Wichterle D, Shah D, et al. Electrical reconnection after pulmonary vein isolation is contingent on contact force during initial treatment: Results from the EFFICAS I study. *Circulation: Arrhythmia and Electrophysiology*. 2013;**6**(2):327-333
- [8] Reddy VY, Dukkipati SR, Neuzil P, Natale A, Albenque JP, Kautzner J, et al. Randomized, controlled trial of the safety and effectiveness of a contact force-sensing irrigated catheter for ablation of paroxysmal atrial fibrillation: Results of the TactiCath contact force ablation catheter study for atrial fibrillation (TOCCASTAR) study. *Circulation*. 2015;**132**(10):907-915
- [9] Lee SR, Choi EK, Lee EJ, Choe WS, Cha MJ, Oh S. Efficacy of the optimal ablation index-targeted strategy for pulmonary vein isolation in patients with atrial fibrillation: The OPTIMUM study results. *Journal of Interventional Cardiac Electrophysiology*. Aug 2019;**55**(2):171-181
- [10] Hussein A, Das M, Riva S, Morgan M, Ronayne C, Sahni A, et al. Use of ablation index-guided ablation results in high rates of durable pulmonary vein isolation and freedom from arrhythmia in persistent atrial fibrillation patients. *Circulation: Arrhythmia and Electrophysiology*. 2018;**11**(9):e006576
- [11] Philips T, Taghji P, El Haddad M, Wolf M, Knecht S, Vandekerckhove Y, et al. Improving procedural and one-year outcome after contact force-guided pulmonary vein isolation: The role of interlesion distance, ablation index, and contact force variability in the 'CLOSE'-protocol. *Europace*. 2018;**20**(FI_3):f419-f427
- [12] Taghji P, El Haddad M, Philips T, Wolf M, Knecht S, Vandekerckhove Y, et al. Evaluation of a strategy aiming to enclose the pulmonary veins with

- contiguous and optimized radiofrequency lesions in paroxysmal atrial fibrillation: A pilot study. *JACC: Clinical Electrophysiology*. 2018;**4**(1):99-108
- [13] Haissaguerre M, Jais P, Shah DC, Takahashi A, Hocini M, Quiniou G, et al. Spontaneous initiation of atrial fibrillation by ectopic beats originating in the pulmonary veins. *The New England Journal of Medicine*. 1998;**339**(10):659-666
- [14] Jais P, Hocini M, Macle L, Choi KJ, Deisenhofer I, Weerasooriya R, et al. Distinctive electrophysiological properties of pulmonary veins in patients with atrial fibrillation. *Circulation*. 2002;**106**(19):2479-2485
- [15] Rostock T, Steven D, Lutomsky B, Servatius H, Drewitz I, Klemm H, et al. Atrial fibrillation begets atrial fibrillation in the pulmonary veins on the impact of atrial fibrillation on the electrophysiological properties of the pulmonary veins in humans. *Journal of the American College of Cardiology*. 2008;**51**(22):2153-2160
- [16] Knight BP. The pulmonary veins speedy recoveries and early discharges. *Journal of the American College of Cardiology*. 2008;**51**(22):2161-2162
- [17] De Ponti R, Tritto M, Lanzotti ME, Spadacini G, Marazzi R, Moretti P, et al. Computerized high-density mapping of the pulmonary veins: New insights into their electrical activation in patients with atrial fibrillation. *Europace*. 2004;**6**(2):97-108
- [18] Pappone C, Santinelli V, Manguso F, Vicedomini G, Gugliotta F, Augello G, et al. Pulmonary vein denervation enhances long-term benefit after circumferential ablation for paroxysmal atrial fibrillation. *Circulation*. 2004;**109**(3):327-334
- [19] Mandapati R, Skanes A, Chen J, Berenfeld O, Jalife J. Stable microreentrant sources as a mechanism of atrial fibrillation in the isolated sheep heart. *Circulation*. 2000;**101**(2):194-199
- [20] Hwang C, Wu TJ, Doshi RN, Peter CT, Chen PS. Vein of Marshall cannulation for the analysis of electrical activity in patients with focal atrial fibrillation. *Circulation*. 2000;**101**(13):1503-1505
- [21] Sueda T, Nagata H, Orihashi K, Morita S, Okada K, Sueshiro M, et al. Efficacy of a simple left atrial procedure for chronic atrial fibrillation in mitral valve operations. *The Annals of Thoracic Surgery*. 1997;**63**(4):1070-1075
- [22] Yorgun H, Aytemir K, Canpolat U, Sahiner L, Kaya EB, Oto A. Additional benefit of cryoballoon-based atrial fibrillation ablation beyond pulmonary vein isolation: Modification of ganglionated plexi. *Europace*. 2014;**16**(5):645-651
- [23] Luik A, Radzewitz A, Kieser M, Walter M, Bramlage P, Hormann P, et al. Cryoballoon versus open irrigated radiofrequency ablation in patients with paroxysmal atrial fibrillation: The prospective, randomized, controlled, noninferiority freeze AF study. *Circulation*. 2015;**132**(14):1311-1319
- [24] Chierchia GB, Di Giovanni G, Cicconte G, de Asmundis C, Conte G, Sieira-Moret J, et al. Second-generation cryoballoon ablation for paroxysmal atrial fibrillation: 1-year follow-up. *Europace*. 2014;**16**(5):639-644
- [25] Reddy VY, Sediva L, Petru J, Skoda J, Chovanec M, Chitovova Z, et al. Durability of pulmonary vein isolation with cryoballoon ablation: Results from the sustained PV isolation with arctic front advance (SUPIR) study. *Journal of Cardiovascular Electrophysiology*. 2015;**26**(5):493-500

- [26] Kuck KH, Brugada J, Furnkranz A, Metzner A, Ouyang F, Chun KR, et al. Cryoballoon or radiofrequency ablation for paroxysmal atrial fibrillation. *The New England Journal of Medicine*. 2016;**374**(23):2235-2245
- [27] Casado-Arroyo R, Chierchia GB, Conte G, Levinstein M, Sieira J, Rodriguez-Manero M, et al. Phrenic nerve paralysis during cryoballoon ablation for atrial fibrillation: A comparison between the first- and second-generation balloon. *Heart Rhythm*. 2013;**10**(9):1318-1324
- [28] Furnkranz A, Bordignon S, Schmidt B, Perrotta L, Dugo D, De Lazzari M, et al. Incidence and characteristics of phrenic nerve palsy following pulmonary vein isolation with the second-generation as compared with the first-generation cryoballoon in 360 consecutive patients. *Europace*. 2015;**17**(4):574-578
- [29] Omran H, Gutleben KJ, Molatta S, Fischbach T, Wellmann B, Horstkotte D, et al. Second generation cryoballoon ablation for persistent atrial fibrillation: An updated meta-analysis. *Clinical Research in Cardiology*. 2018;**107**(2):182-192
- [30] Canpolat U, Kocyigit D, Yalcin MU, Cotelis C, Sener YZ, Oksul M, et al. Long-term outcomes of pulmonary vein isolation using second-generation cryoballoon during atrial fibrillation ablation. *Pacing and Clinical Electrophysiology*. Jul 2019;**42**(7):910-921
- [31] Yorgun H, Canpolat U, Kocyigit D, Cotelis C, Evranos B, Aytemir K. Left atrial appendage isolation in addition to pulmonary vein isolation in persistent atrial fibrillation: One-year clinical outcome after cryoballoon-based ablation. *Europace*. 2017;**19**(5):758-768
- [32] Yalin K, Lyan E, Abdin A, Heeger CH, Vogler J, Liosis S, et al. Second-generation cryoballoon for pulmonary vein isolation in patients with pulmonary vein abnormality: Safety, efficacy and lessons from re-ablation procedures. *International Journal of Cardiology*. 2018;**272**:142-148
- [33] Shigeta T, Okishige K, Yamauchi Y, Aoyagi H, Nakamura T, Yamashita M, et al. Clinical assessment of cryoballoon ablation in cases with atrial fibrillation and a left common pulmonary vein. *Journal of Cardiovascular Electrophysiology*. 2017;**28**(9):1021-1027
- [34] Stroker E, de Asmundis C, Saitoh Y, Velagic V, Mugnai G, Irfan G, et al. Anatomic predictors of phrenic nerve injury in the setting of pulmonary vein isolation using the 28-mm second-generation cryoballoon. *Heart Rhythm*. 2016;**13**(2):342-351
- [35] Pappone C, Vicedomini G, Augello G, Manguso F, Saviano M, Baldi M, et al. Radiofrequency catheter ablation and antiarrhythmic drug therapy: A prospective, randomized, 4-year follow-up trial: The APAF study. *Circulation: Arrhythmia and Electrophysiology*. 2011;**4**(6):808-814
- [36] Chen J, Dagres N, Hocini M, Fauchier L, Bongiorni MG, Defaye P, et al. Catheter ablation for atrial fibrillation: Results from the first European snapshot survey on procedural routines for atrial fibrillation ablation (ESS-PRAFA). Part II. *Europace*. 2015;**17**(11):1727-1732
- [37] Nielsen JC, Johannessen A, Raatikainen P, Hindricks G, Walfridsson H, Pehrson SM, et al. Long-term efficacy of catheter ablation as first-line therapy for paroxysmal atrial fibrillation: 5-year outcome in a randomised clinical trial. *Heart*. 2017;**103**(5):368-376
- [38] Hunter RJ, Berriman TJ, Diab I, Kamdar R, Richmond L, Baker V, et al. A randomized controlled trial of

catheter ablation versus medical treatment of atrial fibrillation in heart failure (the CAMTAF trial). *Circulation: Arrhythmia and Electrophysiology*. 2014;**7**(1):31-38

[39] Marrouche NF, Brachmann J, Andresen D, Siebels J, Boersma L, Jordaens L, et al. Catheter ablation for atrial fibrillation with heart failure. *The New England Journal of Medicine*. 2018;**378**(5):417-427

[40] Di Biase L, Mohanty P, Mohanty S, Santangeli P, Trivedi C, Lakkireddy D, et al. Ablation versus amiodarone for treatment of persistent atrial fibrillation in patients with congestive heart failure and an implanted device: Results from the AATAC multicenter randomized trial. *Circulation*. 2016;**133**(17):1637-1644

[41] Wutzler A, Huemer M, Parwani AS, Blaschke F, Haverkamp W, Boldt LH. Contact force mapping during catheter ablation for atrial fibrillation: Procedural data and one-year follow-up. *Archives of Medical Science*. 2014;**10**(2):266-272

[42] Reddy VY, Shah D, Kautzner J, Schmidt B, Saoudi N, Herrera C, et al. The relationship between contact force and clinical outcome during radiofrequency catheter ablation of atrial fibrillation in the TOCCATA study. *Heart Rhythm*. 2012;**9**(11):1789-1795

[43] Ullah W, Hunter RJ, Finlay MC, McLean A, Dhinoja MB, Sporton S, et al. Ablation index and surround flow catheter irrigation: Impedance-based appraisal in clinical ablation. *JACC: Clinical Electrophysiology*. 2017;**3**(10):1080-1088

[44] Solimene F, Schillaci V, Shopova G, Urraro F, Arestia A, Iuliano A, et al. Safety and efficacy of atrial fibrillation ablation guided by ablation index module. *Journal of Interventional*

Cardiac Electrophysiology. 2019;**54**(1):9-15

[45] Das M, Loveday JJ, Wynn GJ, Gomes S, Saeed Y, Bonnett LJ, et al. Ablation index, a novel marker of ablation lesion quality: Prediction of pulmonary vein reconnection at repeat electrophysiology study and regional differences in target values. *Europace*. 2017;**19**(5):775-783

[46] Yarlagadda B, Deneke T, Turagam M, Dar T, Paleti S, Parikh V, et al. Temporal relationships between esophageal injury type and progression in patients undergoing atrial fibrillation catheter ablation. *Heart Rhythm*. 2019;**16**(2):204-212

[47] Martinek M, Meyer C, Hassanein S, Aichinger J, Bencsik G, Schoefl R, et al. Identification of a high-risk population for esophageal injury during radiofrequency catheter ablation of atrial fibrillation: Procedural and anatomical considerations. *Heart Rhythm*. 2010;**7**(9):1224-1230

[48] Blockhaus C, Muller P, Vom Dahl S, Leonhardt S, Haussinger D, Gerguri S, et al. Low incidence of esophageal lesions after pulmonary vein isolation using contact-force sensing catheter without esophageal temperature probe. *International Heart Journal*. 2017;**58**(6):880-884

[49] Muller P, Dietrich JW, Halbfass P, Abouarab A, Fochler F, Szollosi A, et al. Higher incidence of esophageal lesions after ablation of atrial fibrillation related to the use of esophageal temperature probes. *Heart Rhythm*. 2015;**12**(7):1464-1469

[50] Wolf M, El Haddad M, De Wilde V, Philips T, De Pooter J, Almorad A, et al. Endoscopic evaluation of the esophagus after catheter ablation of atrial fibrillation using contiguous and optimized radiofrequency applications. *Heart Rhythm*. Jul 2019;**16**(7):1013-1020

- [51] Schreiber D, Rostock T, Frohlich M, Sultan A, Servatius H, Hoffmann BA, et al. Five-year follow-up after catheter ablation of persistent atrial fibrillation using the stepwise approach and prognostic factors for success. *Circulation: Arrhythmia and Electrophysiology*. 2015;**8**(2):308-317
- [52] Verma A, Jiang CY, Betts TR, Chen J, Deisenhofer I, Mantovan R, et al. Approaches to catheter ablation for persistent atrial fibrillation. *The New England Journal of Medicine*. 2015;**372**(19):1812-1822
- [53] Verma A, Mantovan R, Macle L, De Martino G, Chen J, Morillo CA, et al. Substrate and trigger ablation for reduction of atrial fibrillation (STAR AF): A randomized, multicentre, international trial. *European Heart Journal*. 2010;**31**(11):1344-1356
- [54] Friedman DJ, Black-Maier EW, Barnett AS, Pokorney SD, Al-Khatib SM, Jackson KP, et al. Left atrial appendage electrical isolation for treatment of recurrent atrial fibrillation: A meta-analysis. *JACC: Clinical Electrophysiology*. 2018;**4**(1):112-120
- [55] Di Biase L, Burkhardt JD, Mohanty P, Mohanty S, Sanchez JE, Trivedi C, et al. Left atrial appendage isolation in patients with longstanding persistent AF undergoing catheter ablation: BELIEF trial. *Journal of the American College of Cardiology*. 2016;**68**(18):1929-1940
- [56] Fink T, Schluter M, Heeger CH, Lemes C, Maurer T, Reissmann B, et al. Stand-alone pulmonary vein isolation versus pulmonary vein isolation with additional substrate modification as index ablation procedures in patients with persistent and long-standing persistent atrial fibrillation: The randomized alster-lost-AF trial (ablation at St. Georg Hospital for Long-Standing Persistent Atrial Fibrillation). *Circulation: Arrhythmia and Electrophysiology*. 2017;**10**:e005114
- [57] Kettinger K, Yim DH, Gramley F. Catheter ablation of persistent atrial fibrillation: Circumferential pulmonary vein ablation: Beneficial effect of an additional linear lesion at the roof of the left atrium on the long-term outcome. *Herzschrittmachertherapie & Elektrophysiologie*. 2017;**28**(3):328-334
- [58] Jais P, Hocini M, Hsu LF, Sanders P, Scavee C, Weerasooriya R, et al. Technique and results of linear ablation at the mitral isthmus. *Circulation*. 2004;**110**(19):2996-3002