

We are IntechOpen, the world's leading publisher of Open Access books Built by scientists, for scientists

6,900

Open access books available

185,000

International authors and editors

200M

Downloads

Our authors are among the

154

Countries delivered to

TOP 1%

most cited scientists

12.2%

Contributors from top 500 universities



WEB OF SCIENCE™

Selection of our books indexed in the Book Citation Index
in Web of Science™ Core Collection (BKCI)

Interested in publishing with us?
Contact book.department@intechopen.com

Numbers displayed above are based on latest data collected.
For more information visit www.intechopen.com



Glycoside Hydrolases in Plant Cell Wall Proteomes: Predicting Functions That Could Be Relevant for Improving Biomass Transformation Processes

Maria Juliana Calderan-Rodrigues,
Juliana Guimarães Fonseca, Hélène San Clemente,
Carlos Alberto Labate and Elisabeth Jamet

Additional information is available at the end of the chapter

<http://dx.doi.org/10.5772/intechopen.73181>

Abstract

Glycoside hydrolases (GHs) are enzymes that are able to rearrange the plant cell wall polysaccharides, being developmental- and stress-regulated. Such proteins are used in enzymatic cocktails for biomass hydrolysis in the second-generation ethanol (E2G) production. In this chapter, we investigate GHs identified in plant cell wall proteomes by predicting their functions through alignment with homologous plant and micro-organism sequences and identification of functional domains. Up to now, 49 cell wall GHs were identified in sugarcane and 114 in *Brachypodium distachyon*. We could point at candidate proteins that could be targeted to lower biomass recalcitrance. We more specifically addressed several GHs with predicted cellulase, hemicellulase, and pectinase activities, such as β -xylosidase, α and β -galactosidase, α -N-arabinofuranosidases, and glucan β -glucosidases. These enzymes are among the most used in enzymatic cocktails to deconstruct plant cell walls. As an example, the fungi arabinofuranosidases belonging to the GH51 family, which were also identified in sugarcane and *B. distachyon*, have already been associated to the degradation of hemicellulosic and pectic polysaccharides, through a peculiar mechanism, probably more efficient than other GH families. Future research will benefit from the information available here to design plant varieties with self-disassembly capacity, making the E2G more cost-effective through the use of more efficient enzymes.

Keywords: *Brachypodium distachyon*, cell wall proteomes, glycoside hydrolase (GH), second-generation ethanol, sugarcane

1. Introduction

The production of second-generation ethanol (E2G) provides an additional source of energy in the sugar and ethanol sector by increasing the biofuel yield without expanding the crop area, thus leading to a sustainable production system. However, for the process to become financially competitive in comparison with first-generation ethanol (E1G), it is necessary to reduce the costs related to the lignocellulosic biomass processing required to recover and break the sugars present in plant cell walls [1]. The principal barrier to the conversion of lignocellulosic biomass into bioethanol or chemicals is the insoluble lignin network that surrounds and shields the cellulose microfibrils from degrading enzymes. The high energy and environmental costs of the treatments necessary to overcome these drawbacks constitute major hurdles to commercial E2G production [2]. To overcome these limitations, many studies have focused on the identification of enzymes related to biomass pretreatment and hydrolysis processes. The majority of the enzymes that compose enzymatic cocktails are proteins prospected from fungi that belong to different glycoside hydrolase (GH) families [3].

The raw material for E2G production is plant fiber, which is mainly composed of cell walls. Nevertheless, less work has been devoted to study plant cell wall proteins (CWPs), and thus, to understand how the plant mechanisms themselves function to loosen and tighten up back the cell wall in order to promote cell growth and adapt to their changing environment. Accordingly, a common opinion today is that it is important to understand how cell walls are built up to improve the biomass deconstruction processes [4, 5].

Plant cells are surrounded by a wall characterized by its specific structure and composition [6]. Cell walls are mainly composed of polysaccharides, lignin, suberin, waxes, proteins, calcium, boron, and water, and have the ability to self-assemble [7]. Plants have two different kinds of cell wall deposition. Primary cell walls are synthesized in still-growing cells, whose form is not definitive, and thus, they can undergo growth and expansion. Secondary cell walls are synthesized in already fully expanded cells which are differentiating to perform specific functions, like xylem and fibers cells. In lignified secondary walls, the proportion of cellulose is higher than in primary cell walls with a higher degree of polymerization and crystallinity specificities [8]. Cellulose, hemicellulose, and pectins are the cell wall polysaccharides, and the biogenesis of cell walls involves their synthesis in intracellular compartments or at the plasma membrane, secretion, assembly, and rearrangement *in muro*. The primary cell walls of grasses have specific characteristics, and they are called type II cell walls [9]. They have a low content in pectins and xyloglucans, but a high content in mixed linked β -D-glucan [also named (1 \rightarrow 3, 1 \rightarrow 4)- β -D-glucans] during growth and in glucuronoarabinoxylans (GAXs). They also present ferulate and p-coumarate esters formed by attachment to the arabinosyl units of GAXs that are absent in gymnosperms, dicots, and other monocots. It has been assumed that plants devote more than 10% of their genome to the biogenesis of cell walls [10]. The cell wall is a dynamic structure involved in several physiological processes such as: cell growth [11], defense against pathogens [12], or signaling [13]. In sugarcane, the cell wall also plays a key role in the distribution of sucrose [14].

Displaying roles in cell growth, enzymes are part of the cell wall proteome. Glycosidases and glycanases have exo- and endo-GH activities, respectively, while trans-glycosidases and trans-glycanases perform exo- and endo-transglycosylation, respectively. Pectin methylesterases

and pectin acetylsterases control the degree of homogalacturonan methylesterification and acetylation, respectively [15]. Class III peroxidases (Prxs) can either form covalent bonds by oxidizing aromatic compounds such as monolignols or aromatic amino acids or produce reactive oxygen species that participate in non-enzymatic breakage of covalent bonds of polysaccharides [16]. All these proteins belong to multigene families and their genes are differentially regulated during plant development and in response to environmental changes.

GHs are of special interest, since they can hydrolyze the glycosidic bonds from two carbohydrates or from a carbohydrate and a non-carbohydrate moiety, thus actively contributing to cell wall polymer rearrangements. In *Arabidopsis thaliana*, about 379 GHs have been identified, belonging to 29 different families, among which approximately 52% were predicted to be cell wall GHs [17]. A great number of plant cell wall GH families have been identified so far in cell wall proteomes (see [18, 19]). Associations between structure and function can be predicted to point to candidate genes prone to manipulation. Among others, GHs comprise β -glucosidases, β -galactosidases, β -mannosidases, β -glucuronidases, β -xylosidases, β -D-fucosidases, exo- β -1,4-glucanases, lactases, β -glycosidases, α -L-arabinofuranosidases, glucan 1,3- and 1,4- β -glucosidases, β -amylases (for a complete repertoire, see [20]).

In this chapter, we will describe cell wall GHs identified in the cell wall proteomes of sugarcane and *Brachypodium distachyon*, two monocots from the grass family. Sugarcane is already largely used for E1G production and could be used for E2G production [21], whereas *B. distachyon* is a model plant amenable for genetic transformation [22]. Up to now, there were 49 and 114 GHs identified in sugarcane and *B. distachyon* cell wall proteomes, respectively (see [18]). Based on their amino acid sequences, we have made bioinformatic predictions of functional domains and phylogenic analyses. GH families possibly relevant for improving biomass transformation processes to E2G are highlighted.

2. Plant GH families

In plants, several strategies have been used in order to extract and identify CWP with a high number of GHs, such as vacuum-infiltration protocol with saline solution and identification of proteins predicted by bioinformatics to be targeted to the secretory pathway [23–25]. In *A. thaliana*, around 200 GHs, belonging to 13 families, are assumed to be involved in polysaccharide modification and cell wall reorganization [8].

Conversely, in the monocot rice, GH17 is the one that presents the highest number of members, followed by GH28 [26]. The cell wall particularities of dicots (e.g., *A. thaliana*) vs. monocots, among which grasses, are also reflected in the distribution of GH families. For example, the lower proportion of pectins in monocot cell walls relates to a lower number of polygalacturonases (GH28) [17]. Thus, the range of GH families depends on plant species, and each of them has to be studied separately.

By bioinformatic analyses of amino acid sequences, it is possible to classify newly identified GHs into families. We have done it for the GHs identified in the sugarcane and the *B. distachyon* cell wall proteomes. However, assigning a GH to its family as defined in the CAZy database [20] does not necessarily provide a clear picture of its function, since proteins from a given GH

family can display different roles. For example, GH1 family members can be involved in cell wall metabolism, lignification, signaling, or defense [17]. Phylogenetic analyses can help getting more information regarding the functions of specific plant GHs. Since monocots could be a major source of raw material for E2G production, it is interesting to study their cell wall metabolism and outline possible strategies to increase biomass production or lower cell wall recalcitrance to deconstruction [27]. In addition, it might be possible to find interesting analogies by comparing the plant cell wall assembly/disassembly mechanisms to those of microorganisms.

3. GHs identified in sugarcane and *B. distachyon* cell wall proteomes

In sugarcane, 49 GHs have been identified in cell wall proteomes [28, 29]. They are distributed in 16 GH families. The GH3 family is the best represented (~20%), followed by GH17 (~16%), GH18 (~12%), and GH1 (~8%) (**Figure 1**). This distribution varies according to organ and developmental stage. In cell suspension cultures, only 4 GH families were identified among which GH3 was the most populated [28]. In 2-month-old stems, 7 GH families were found, GH3 also being the most represented [29]. Leaves recovered few GHs, from families 19, 27 (young leaves only), 28, and 31 (young leaves only). Apical internodes mainly contained GH3 members, whereas mostly GH17 members were found in basal ones [30]. Noteworthy, it should be mentioned that the absence of some GH families in a given cell wall proteomes could be due to technical limitations or differential accessibility as a consequence of differences in cell wall structure.

In *B. distachyon*, 114 CW GHs were identified in cell wall proteomes [31–34]. They are distributed into 21 families. The most populated one was GH17 (~17%), followed by GH28 (~13%), GH1 (~9%), GH3 (~8%), and GH35 (~8%) (**Figure 1**). GH28, followed by GH1, GH3, and GH16, had the highest number of members in young leaves. In mature leaves, GH17, GH18, and GH28 were the most represented. In internodes, they were GH28 and GH17. In seedlings and seeds, GH17 was the most populated family.

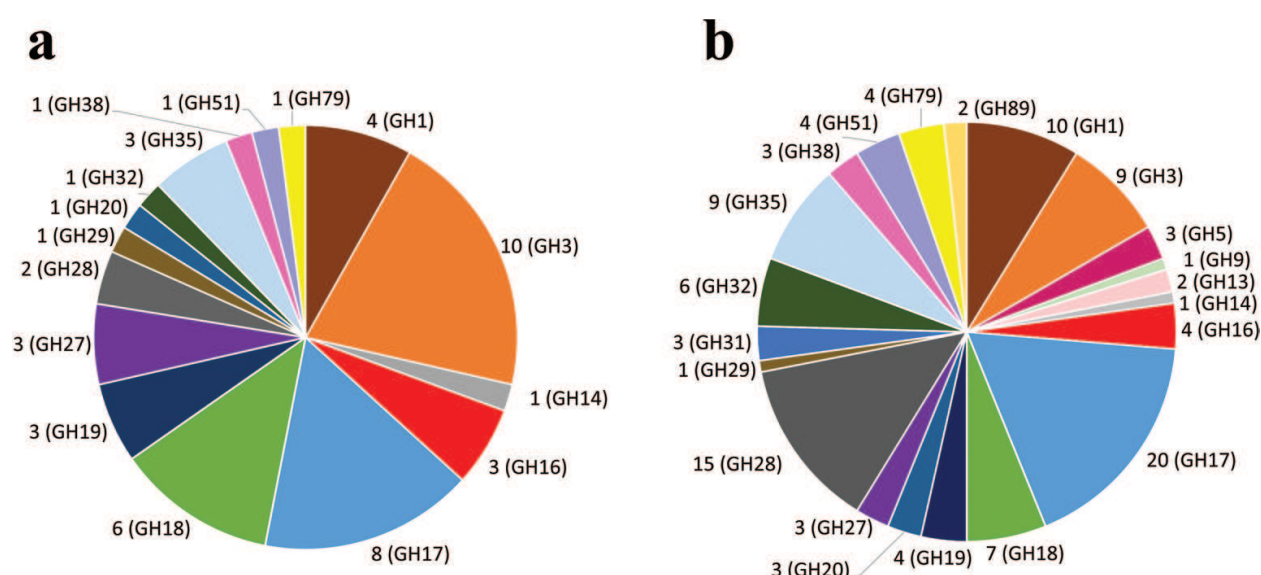


Figure 1. GH family distribution of presently known cell wall proteomes in sugarcane (a) and *B. distachyon* (b). The number of family members identified in each of them is indicated. Same colors indicate same GH families in both species.

The large size of the GH1, GH17, and GH28 families is probably linked to their roles in the assembly and in the rearrangement of cell wall polysaccharides [17]. Usually the GH1, GH16, GH17, and GH35 families are less represented in dicots than in monocots [31]. GH17 display glucan-1,3- β -glucosidase activity and possible substrates could be mixed (1,3)(1,4)- β -D-glucans [8]. This is consistent with the fact that only type II grass cell walls present this kind of hemicellulose.

After a survey of the cell wall proteomes described so far and collecting information regarding microorganism enzymes used for biomass deconstruction, we decided to focus this review on the GH1, GH3, GH17, GH27, GH35, and GH51 families. We have predicted functional and structural domains in newly identified CWP using the PredictProtein bioinformatic software and grouping them in families [35]. Since plant cells perform cell expansion themselves by involving cell wall polysaccharide rearrangements, the plant mechanisms could be mimicked by the enzymes used in cocktails. The comparison of plant and microorganisms enzymes presently used for biomass hydrolysis could contribute to determining their common characteristics and which specificities of plant enzymes could be copied in order to improve industrial cell wall deconstruction processes. Conversely, this comparative study could help in identifying which of the characteristics of microorganism enzymes could be engineered in plant species in order to obtain biomass with less recalcitrant cell walls.

4. GH1, GH3, and GH51

The GH1 family mainly comprises β -glucosidases, which are found in several organisms performing different functions. In plants, they are involved in cell wall catabolism, signaling, lignification, defense, symbiosis, and secondary metabolism. Putative β -glucosidase genes have been shown to be induced by biotic and abiotic stresses and they were considered critical for the success of plant development in stressful environments [36–40]. Accordingly, plants are the organisms that have the highest number of GH1s, e.g., 48 in *A. thaliana* [41] and 40 in *Oryza sativa* [42]. Over the years, various β -glucosidases hydrolyzing cell wall oligosaccharides have been characterized mainly in monocots, such as in germinating seedlings of barley where they show preference for manno-oligosaccharides in endosperm cell walls [43], and in rice seedlings, where they hydrolyze different oligosaccharides [42]. Extracellular β -glucosidases can also contribute to the production of toxic compounds, such as hydroxamic acids and cyanide [44–46]. For this process to occur correctly, the defense molecules are stored in non-active glucosylated forms in the vacuole, while the β -glucosidases are stored in the apoplast or in protein bodies in dicots or in plastids in monocots. The enzyme and its substrate get into contact when the cell is damaged during plant-microorganism interaction.

The plant cell wall is a large polysaccharide repository that contains a large amount of glucosyl residues. β -glucosidases play important roles in cell wall formation and plant development, because they participate in cell wall polysaccharide turnover [47]. In sugarcane [30] and *B. distachyon* [31], more GH1 were found in cell wall proteomes of growing organs, such as young leaves and apical internodes, than in mature organs. In addition, as suggested by bioinformatic predictions, several of the identified GH1 (e.g., SCCCCL3001B10.b, SCJFLR1017E03, SCEQLB1066E08, Bradi1g10940, Bradi1g10930, Bradi1g10940, and Bradi2g59650) have a β -glucosidase activity (GO:0008422).

Ten GH3s have been identified in sugarcane [28–30] and nine GH3s have been identified in *B. distachyon* [31, 32, 34]. Half of the sugarcane GH3 are predicted to have a β -glucosidase activity (GO:0008422) (e.g., SCEZLB1007A09, SCEQLR1093F09, and SCQSLR1089A04). However, some GH3 are predicted to have xylosidase (e.g., Bradi5g23470) or α -L-arabinofuranosidase (AFase) activity (e.g., SCCCCL4009F05, SCCCSCB1003H06, and Bradi3g59020).

The fungi β -glucosidases can degrade cellulose together with other kinds of enzymes, like endoglucanases and cellobiohydrolases. They separate the molecules of glucose from cellobiose, thus being used in enzymatic cocktails to produce cellulosic bioethanol [48]. In barley, the structure of the GH3 β -D-glucan exohydrolase ExoI was determined through X-ray crystallography, showing a two-domain globular structure being different from that of GH1 [49]. Besides the catalytic site, this enzyme has another binding site for (1 \rightarrow 3, 1 \rightarrow 4)- β -D-glucans only identified in monocots. Xylan 1,4- β -D-xylosidases hydrolyze xylose from xylo-oligosaccharides. These enzymes have several uses, such as in the industrial processes related to bread dough, animal feed digestibility, and deinking of recycled papers. In enzymatic cocktails, they are considered the most efficient enzymes to break glycosidic bonds of hemicelluloses [50]. The few GH51 members identified in sugarcane and *B. distachyon* were also assumed to be AFases (EC 3.2.1.55, GO:0046556). AFases catalyze the hydrolysis of α -L-arabinofuranoside in α -L-arabinosides. They act together with hemicellulases and pectinolytic enzymes to achieve hemicellulose and pectin hydrolysis. Several AFases used commercially belong to the GH51 family, generally originating from fungi. Such enzymes are of special interest for monocots

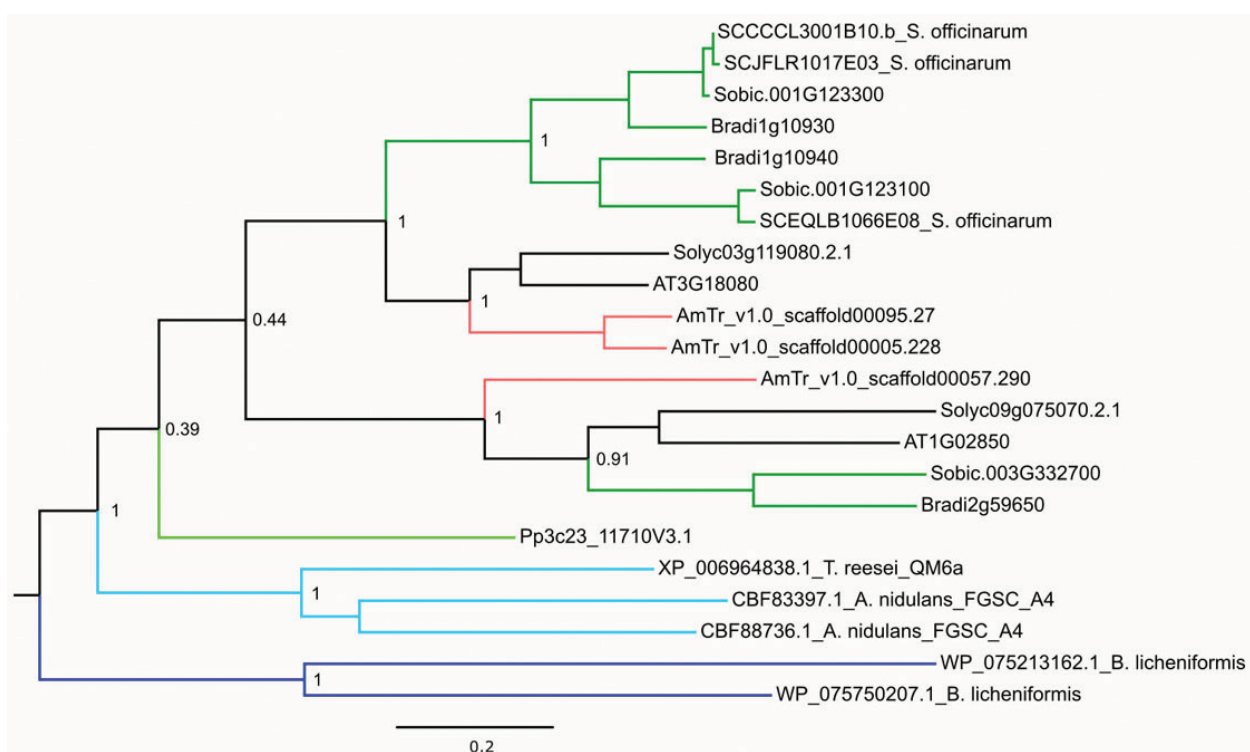


Figure 2. Phylogenetic tree of the GH1 subfamily comprising the GH1 identified in sugarcane and *B. distachyon* cell wall proteomes. All the plant sequences have been retrieved from Phytozome v12.1 (phytozome.jgi.doe.gov), whereas the microorganism sequences originate from the NCBI website (www.ncbi.nlm.nih.gov/protein/). The MEGA6 software (www.megasoftware.net) was used to generate the tree with the following options: MUSCLE for amino acid sequence alignments and maximum likelihood tree with 500 bootstraps. Visualization was done with FigTree (tree.bio.ed.ac.uk/software/figtree/).

biomass hydrolysis, since this material is particularly rich in arabinoxylans, which need to be degraded with AFases in addition to endoglucanases [51].

To compare plant and microorganism GH1 and GH3, we have performed phylogenetic analyses. Some GH1 and GH3 identified in cell wall proteomes of sugarcane and *B. distachyon* have been selected. For plants, we have chosen species at critical evolutionary nodes since terrestrialization like a moss (*Physcomitrella patens*), the common ancestor to higher plants (*Amborella trichopoda*), *Sorghum bicolor* as the closest plant to sugarcane having a sequenced genome, and two dicots (*Lycopersicon esculentum* and *A. thaliana*). The *B. distachyon* and sugarcane sequences of several GHs identified in cell wall proteomes have been included in this analysis. Regarding microorganisms, we have retained GHs usually used in enzymatic cocktails for cell wall deconstruction. They belong to bacteria like *Bacillus licheniformis*, or to fungi like *Aspergillus nidulans* or *Trichoderma reesei* [52, 53]. As expected, the selected GH1 and GH3 share common ancestors. The two *B. licheniformis* GH1 root the GH1 tree (Figure 2). *A. nidulans* and *T. reesei* GH1 come next, prior to the *P. patens* GH1.

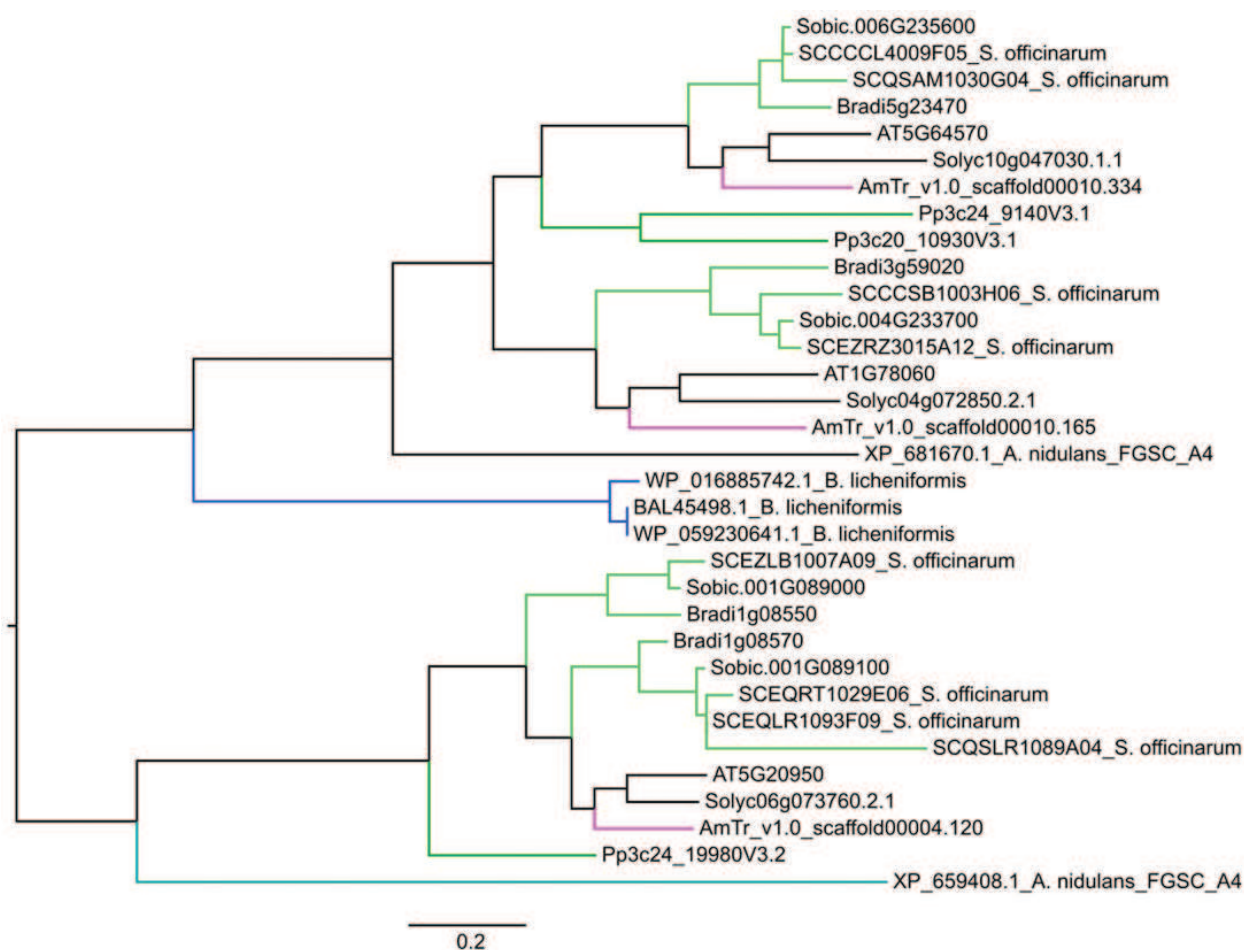


Figure 3. Phylogenetic tree of the GH3 subfamily comprising the GH3 identified in sugarcane and *B. distachyon* cell wall proteomes. All the plant sequences have been retrieved from Phytozome v12.1 (phytozome.jgi.doe.gov), whereas the microorganism sequences originate from the NCBI website (www.ncbi.nlm.nih.gov/protein/). The MEGA6 software (www.megasoftware.net) was used to generate the tree with the following options: MUSCLE for amino acid sequence alignments and maximum likelihood tree with 500 bootstraps. Visualization was done with FigTree (tree.bio.ed.ac.uk/software/figtree/).

Finally, the tree is split into two distinct clades, each containing either one or two closely related *A. trichopoda* GH1. Monocot and dicot GH1 are finally separated in sub-clades. Regarding the GH3, the situation is more complex (**Figure 3**). Two clades are separated at the basis of the tree: clade A is rooted by three *B. licheniformis* GH3, followed by an *A. nidulans* GH3, whereas clade B is only rooted by an *A. nidulans* GH3. As for the GH1 tree, each sub-clade comprises an *A. trichopoda* GH3, whereas monocot and dicot GH3 form distinct groups. Similar results could be obtained for the other GH families. This phylogenetic analysis shows the close relationships between microorganism and plant GH1 or GH3. Additional work is required to define precisely their specificities with the aim of generating new tools for industrial processes of biomass deconstruction.

5. GH 17

GH17 are encoded by large gene families in plants. In *O. sativa*, GH17 is the largest GH family [17]. In *A. thaliana* and *Populus trichocarpa*, it comprises 50 and 100 members, respectively [54]. The GH3 family includes β -1,3-glucanase (glucan endo-1,3- β -D-glucosidase, E.C 3.2.1.39), glucan 1,3- β -glucosidase (E.C 3.2.1.58), licheninase (EC 3.2.1.73), glucan 1,4- β -glucosidase (EC 3.2.1.74) activities (enzyme.expasy.org/). All the GH17 found in sugarcane and *B. distachyon* cell wall proteomes are predicted to have a glucan endo-1,3- β -D-glucosidase activity (GO:0042973).

β -1,3-glucanases have been shown to be important proteins involved in plant defense reactions against pathogens and are considered as pathogenesis-related proteins of the PR-2 family [55]. Their role is hydrolysis of the β -1,3-glucan bonds, an important structural component of fungal cell walls, resulting in their destabilization and in the release of elicitors that further stimulate defense responses [55]. This antifungal activity was shown both *in vitro* [56] and *in vivo* [57]. In sugarcane, GH17 SCQSRT2031D12 identified in basal internodes was considered similar to the *A. thaliana* At4g16260 β -1,3-endoglucanase that has been associated with increased resistance to pathogen attack [58]. Noteworthy, β -1,3-glucanases can accumulate in vacuoles of root cells or mature leaf cells in response to pathogen infection, whereas others are secreted to the extracellular space, but they can also be secreted in the absence of pathogen infection [55]. They are, thus, also important during plant development, being involved in cell division, pollen development, seed germination, and maturation as well as in signaling [55, 59, 60].

According to phylogenetic analyses, the GH17 family is divided into three distinct clades (denoted α , β , and γ) [61, 62], with 10% of its members having cell wall-related functions [61]. GH17 of the α clade are more related to stem elongation, but also responsive to gibberellin, those of the β and γ clades are more related to stress response and defense against pathogens [62–65]. In addition to the GH17 domain *per se*, proteins of the GH17 family comprise other domains as shown by [61] studying the β -1,3-glucanase sequences of *A. thaliana*. They noted that all the sequences had a predicted N-terminal signal peptide linking them to the secretory pathway. Half of them had a C-terminal extension, being first classified as an X8 domain [66]. Previously, the X8 domain was identified as the cellulose binding module 43 (CBM43) responsible for the interaction with β -1,3-glucans [67]. The other GH17 had either a C-terminal glycosylphosphatidylinositol (GPI)-anchor [66, 68] or a vacuolar targeting peptide [55]. The absence or gain of these domains could be related to ancestral traits. All the γ clade members and more than half of the α clade members retained the CBM43 domain, whereas all the members of the

β clade lost it through evolution. It is thought that the loss of this domain facilitates the extracellular secretion induced by biotic stresses, thus improving the response to pathogens [61, 62].

Other studies also revealed the antifungal effects of plant extracellular chitinases (GH18 and GH19) in combination with those of GH17 [69]. Indeed, fungi cell walls are composed of chitin and of branched β -(1,3): β -(1,6) glucans [57, 70–73]. Thereby, transgenic plants overexpressing a chitinase and/or a β -1,3 glucanase became less susceptible to fungal attack [74, 75].

6. GH27 and GH35

The GH27 identified in cell wall proteomes of both sugarcane and *B. distachyon* was predicted to have α -galactosidase activity (EC 3.2.1.22, GO:0004557). α -galactosidases break galactosidic linkages in galactose-containing oligosaccharides, galactolipids, and galactomannans [76]. Since galactomannans are hemicelluloses, α -galactosidases could be used in enzymatic cocktails to enhance the cell wall hydrolysis process by acting as a hemicellulase.

GH35 are mainly β -galactosidases (EC 3.2.1.23), but exo-1,4- β -D-glucosaminidase (E.C 3.2.1.165) and exo- β -1,4-galactanases (EC 3.2.1.-) also belong to this family. β -galactosidases are found in microorganisms such as bacteria, fungi, and yeast, as well as in animals and plants [77]. They catalyze the hydrolysis of terminal non-reducing β -D-galactose residues in different molecules, like glycoproteins, oligosaccharides, glycolipids and lactose (www.cazy.org). β -galactosidases are classified in two families: GH2 are predominantly found in microorganisms (around 70%), and GH35 are found in plants [78, 79].

GH35 can be distributed into two main groups according to their preferred substrates: hydrolysis of pectic β -1,4-galactans, cleavage of β -1,3- and β -1,6-galactosyl linkages of O-glycans of arabinogalactan proteins [80]. In plants, they are associated with secondary metabolism or polysaccharide degradation, performing important roles in physiological events, including cell wall degradation and expansion during plant development, and turnover of signaling molecules [79–83]. They were also shown to be involved in ripening and abscission of mango, papaya, and orange fruits [84–86]. The GH35 found in the cell wall proteomes of sugarcane [30] and *B. distachyon* [31] is predicted to have a β -galactosidase activity (GO:0004565). In *B. distachyon*, they were only identified in leaves and in seedlings, whereas they were mostly found in sugarcane internodes. GH14 are very close to GH35 due to sequence similarity, perhaps playing similar roles, and they have only been identified in sugarcane internodes. Interestingly, the SCUTAM2089E05 GH14 was found to be differentially expressed in ancestral genotypes of sugarcane showing differential carbon allocation to lignin or sucrose [87].

7. Concluding remarks

Microorganisms use an arsenal of GHs to degrade plant cell walls, in order to establish themselves in their host. Similar mechanisms are thought to be used in their own plant cell wall modification, since plant cell walls embrace several types of carbohydrates with a variety of structures and biological functions. For sugarcane biomass deconstruction, the first step

proposed is the use of pectinases to release pectins, such as endopolygalacturonases, AFases, and β -galactosidases, along with pectin methylesterases. Lichenases are used to hydrolyze mixed linked β -D-glucan. The remaining polymers, cellulose, and hemicelluloses, would have to be treated with a mixture of enzymes like endo- β -xylanases, α -arabinofuranosidases, xyloglucanases, α -xylosidases, and β -galactosidases. Finally, cellulose could be the substrate of endo- β -glucanases, cellobiohydrolases, and β -glucosidases [88].

Besides many studies focusing on microorganism enzymes to optimize E2G production, this work has evaluated the plant enzymes that are assumed to display similar activities. Since plant GHs perform cell wall breakage and expansion, a deeper investigation of their structure could be performed in order to produce more efficient chimeric enzymes to be used in enzymatic cocktails. It is difficult to establish GH functions from their amino acid sequences because proteins from the same GH family may have diverse substrates and roles [8]. However, we were able to predict functions for the GHs identified in the cell wall proteomes of sugarcane and *B. distachyon*. Thus, the mentioned GH1, some GH3 and GH17 were predicted to have a β -glucosidase activity. Other GH3 had possible β -xylosidase and AFase activities, the latter also predicted for GH51. The GH27 and GH35 families were predicted to have α - and β -galactosidase activity, respectively. Nevertheless, it is crucial to mention that in order to precisely characterize the function of a given protein, one should perform biochemical analyses, involving purification, characterization of substrates, as well as genetic studies on mutants in well-characterized model plants.

Therefore, this work has contributed to provide target proteins that could possibly be used in future research to facilitate cheaper E2G production, besides allowing a more detailed analysis of the cell wall proteomes of the grasses, sugarcane and *B. distachyon*.

Acknowledgements

The authors thank Dr. Roberto Ruller for the microorganism suggestions.

Author details

Maria Juliana Calderan-Rodrigues^{1*}, Juliana Guimarães Fonseca², Hélène San Clemente³, Carlos Alberto Labate² and Elisabeth Jamet³

*Address all correspondence to: phdjuliana@gmail.com

1 Brazilian Bioethanol Science and Technology Laboratory (CTBE), National Center for Research in Energy and Materials (CNPem), Campinas, Brazil

2 Department of Genetics, Max Feffer Laboratory of Plant Genetics, Luiz de Queiroz College of Agriculture, University of São Paulo, Piracicaba, Brazil

3 Plant Science Research Laboratory, University of Toulouse, Castanet Tolosan, France

References

- [1] Matsuoka S, Ferro J, Arruda P. The Brazilian experience of sugarcane ethanol industry. In: Lakshmanan P, Songstad D, editors. *In Vitro Cellular & Developmental Biology – Plant*. 1st ed. Berlin: Springer-Verlag; 2009. pp. 372-381. DOI: 10.1007/s11627-009-9220-z
- [2] Albersheim P, Darvill A, Roberts K, Sederoff R, Staehelin A. *Plant Cell Walls*. 1st ed. New York: Garland Science; 2011. p. 430. DOI: 10.1093/aob/mcr128
- [3] Henrissat B, Davies GJ. Structural and sequence-based classification of glycoside hydrolases. *Current Opinion in Structural Biology*. 1997;**7**:637-644. DOI: 10.1016/S0959-440X(97)80072-3
- [4] Kumar M, Campbell L, Turner S. Secondary cell walls: Biosynthesis and manipulation. *Journal of Experimental Botany*. 2016;**67**:515-531. DOI: 10.1093/jxb/erv533
- [5] McCann MC, Carpita NC. Designing the deconstruction of plant cell walls. *Current Opinion in Plant Biology*. 2008;**11**:314-320. DOI: 10.1016/j.pbi.2008.04.001
- [6] Roberts, K. How the cell wall acquired a cellular context. *Plant Physiology* 2001;**125**:127-130. DOI: 10.1104/pp.125.1.127
- [7] Cassab GI. Plant cell wall proteins. *Annual Review in Plant Physiology and Molecular Biology*. 1998;**49**:281-389. DOI: 10.1146/annurev.pp.39.060188.001541
- [8] Minic Z, Jouanin L. Plant glycoside hydrolases involved in cell wall polysaccharide degradation. *Plant Physiology and Biochemistry*. 2006;**44**:435-449. DOI: 10.1016/j.plaphy.2006.08.001
- [9] Carpita NC, Gibeaut DM. Structural models of primary cell walls in flowering plants: Consistency of molecular structure with the physical properties of the walls during growth. *The Plant Journal*. 1993;**1**:1-30. DOI: 10.1111/j.1365-313X.1993.tb00007.x
- [10] Yong W, O'Malley R, Link B, Binder B, Bleecker A, Koch KE, MC MC, DR MC, Patterson S, Reiter WD, Staiger C, Thomas SR, Vermerris W, Carpita NC. Plant cell wall genomics. *Planta*. 2005;**221**:747-751. DOI: 10.1007/s00425-005-1563-z
- [11] Cosgrove DJ. Plant cell wall extensibility: Connecting plant cell growth with cell wall structure, mechanics, and the action of wall-modifying enzymes. *Journal of Experimental Botany*. 2016;**67**:463-476. DOI: 10.1093/jxb/erv511
- [12] Savatin DV, Gramegna G, Modesti V, Cervone F. Wounding in the plant tissue: The defense of a dangerous passage. *Frontiers in Plant Science*. 2014;**5**:470. DOI: 10.3389/fpls.2014.00470
- [13] Tavormina P, De Coninck B, Nikonorova N, De Smet I, Cammue BP. The plant peptidome: An expanding repertoire of structural features and biological functions. *The Plant Cell*. 2015;**27**:2095-2118. DOI: 10.1105/tpc.15.00440

- [14] Casu RE, Rae AL, Nielsen JM, Perroux JM, Bonnett GD, Manners JM. Tissue-specific transcriptome analysis within the maturing sugarcane stalk reveals spatial regulation in the expression of cellulose synthase and sucrose transporter gene families. *Plant Molecular Biology*. 2015;**89**:607-628. DOI: 10.1007/s11103-015-0388-9
- [15] Sénéchal F, Wattier C, Rustérucci C, Pelloux J. Homogalacturonan-modifying enzymes: Structure, expression, and roles in plants. *Journal of Experimental Botany*. 2014;**65**:5125-5160. DOI: 10.1093/jxb/eru272
- [16] Francoz E, Ranocha P, Nguyen-Kim H, Jamet E, Burlat V, Dunand C. Roles of cell wall peroxidases in plant development. *Phytochemistry*. 2015;**112**:15-21. DOI: 10.1016/j.phytochem.2014.07.020
- [17] Minic Z. Physiological roles of plant glycoside hydrolases. *Planta*. 2008;**227**:723-740. DOI: 10.1007/s00425-007-0668-y
- [18] WallProtDB, a Database Resource for Plant Cell Wall Proteomics [Internet]. 2015. Available from: www.polebio.lrsv.ups-tlse.fr/WallProtDB/ [Accessed: June 22, 2017]
- [19] San Clemente H, Jamet E. WallProtDB, a database resource for plant cell wall proteomics. *Plant Methods*. 2015;**11**:2. DOI: 10.1186/s13007-015-0045-y
- [20] Cazy. Carbohydrate-Active Enzymes Database [Internet]. 1998. Available from: www.cazy.org/Glycoside-Hydrolases.html [Accessed: June 10, 2017]
- [21] Amorim HV, Lopes ML, de Castro Oliveira JV, Buckeridge MS, Goldman GH. Scientific challenges of bioethanol production in Brazil. *Applied Microbiology and Biotechnology*. 2011;**91**:1267-1275. DOI: 10.1007/s00253-011-3437-6
- [22] Girin T, David LC, Chardin C, Sibout R, Krapp A, Ferrario-Méry S, Daniel-Vedele F. Brachypodium: A promising hub between model species and cereals. *Journal of Experimental Botany*. 2014;**65**:5683-5696. DOI: 10.1093/jxb/eru376
- [23] Feiz L, Irshad M, Pont-Lezica RF, Canut H, Jamet E. Evaluation of cell wall preparations for proteomics: A new procedure for purifying cell walls from *Arabidopsis hypocotyls*. *Plant Methods*. 2006;**2**:10-23. DOI: 10.1186/1746-4811-2-10
- [24] Boudart G, Jamet E, Rossignol M, Lafitte C, Borderies G, Janeau A, Esquerre-Tugayé MT, Pont-Lezica R. Cell wall proteins in apoplastic fluids of *Arabidopsis thaliana* rosettes: Identification by mass spectrometry and bioinformatics. *Proteomics*. 2005;**5**:212-221. DOI: 10.1002/pmic.200400882
- [25] Minic Z, Jamet E, Négroni L, Der Garabedian PA, Jouanin L. A sub-proteome of *Arabidopsis thaliana* mature stems trapped on Concanavalin A is enriched in cell wall glycoside hydrolases. *Journal of Experimental Botany*. 2007;**58**:2503-2512. DOI: 10.1093/jxb/erm082
- [26] Yokoyama R, Nishitani K. Genomic basis for cell-wall diversity in plants. A comparative approach to gene families in rice and *Arabidopsis*. *Plant and Cell Physiology*. 2014;**45**:1111-1121. DOI: 10.1093/pcp/pch151

- [27] Tavares EQ, De Souza AP, Buckeridge MS. How endogenous plant cell-wall degradation mechanisms can help achieve higher efficiency in saccharification of biomass. *Journal of Experimental Botany*. 2015;**66**:4133-4143. DOI: 10.1093/jxb/erv171
- [28] Calderan-Rodrigues MJ, Jamet E, MBCR B, Guidetti-Gonzalez S, Begossi AC, Setem LV, Franceschini LM, Fonseca JG, Labate CA. Cell wall proteomics of sugarcane cell suspension culture. *Proteomics*. 2014;**14**:738-749. DOI: 10.1002/pmic.201300132
- [29] Calderan-Rodrigues MJ, Jamet E, Douché T, Rodrigues MBC, Cataldi TR, Fonseca JG, San Clemente H, Pont-Lezica R, Labate CA. Cell wall proteome of sugarcane stems: Comparison of a destructive and a non-destructive extraction method showed differences in glycoside hydrolases and peroxidases. *BMC Plant Biology*. 2016;**16**:14. DOI: 10.1186/s12870-015-0677-0
- [30] Fonseca JG. Caracterização do proteoma da aprede celular de folhas e entrenós jovens e maduros de cana-de-açúcar [thesis]. Piracicaba: University of São Paulo; 2015
- [31] Douché T, San Clemente H, Burlat V, Roujol D, Valot B, Zivy M, Pont-Lezica R, Jamet E. *Brachypodium distachyon* as a model plant toward improved biofuel crops: Search for secreted proteins involved in biogenesis and disassembly of cell wall polymers. *Proteomics*. 2013;**13**:2438-2454. DOI: 10.1002/pmic.201200507
- [32] Francin-Allami M, Merah K, Albenne C, Rogniaux H, Pavlovic M, Lollier V, Sibout R, Guillon F, Jamet E, Larré C. Cell wall proteomic of *Brachypodium distachyon* grains: A focus on cell wall remodeling proteins. *Proteomics*. 2015;**15**:2296-2306. DOI: 10.1002/pmic.201400485
- [33] Zhang M, Chen G, Lv D, Li X, Yan Y. N-linked glycoproteome profiling of seedling leaf in *Brachypodium distachyon* L. *Journal of Proteome Research*. 2015;**14**:1727-1738. DOI: 10.1021/pr501080r
- [34] Francin-Allami M, Lollier V, Pavlovic M, San Clemente H, Rogniaux H, Jamet E, Guillon F, Larré C. Understanding the remodelling of cell walls during *Brachypodium distachyon* grain development through a sub-cellular quantitative proteomic approach. *Proteome*. 2016;**4**:21. DOI: 10.3390/proteomes4030021
- [35] Yachdav G, Kloppmann E, Kajan L, Hecht M, Goldberg T, Hamp T, Hönigschmid P, Schafferhans A, Roos M, Bernhofer M, Richter L, Ashkenazy H, Punta M, Schlessinger A, Bromberg Y, Schneider R, Vriend G, Sander C, Ben-Tal N, Rost B. PredictProtein—An open resource for online prediction of protein structural and functional features. *Nucleic Acids Research*. 2014;**42**:W337-W334. DOI: 10.1093/nar/gku366
- [36] Malboobi MA, Lefebvre DD. A phosphate-starvation inducible β -glucosidase gene (psr3.2) isolated from *Arabidopsis thaliana* is a member of a distinct subfamily of the BGA family. *Plant Molecular Biology*. 1997;**34**:57-68. DOI: 10.1023/A:100586540
- [37] van de Ven WT, LeVesque CS, Perring TM, Walling LL. Local and systemic changes in squash gene expression in response to silver winged whitefly feeding. *The Plant Cell*. 2000;**12**:1409-1423. DOI: 10.1105/tpc.12.8.1409

- [38] Kawasaki S, Borchert C, Deyholos M, Wang H, Brazille S, Kawai K, Galbraith D, Bohnert HJ. Gene expression profiles during the initial phase of salt stress in rice. *The Plant Cell*. 2001;**13**:889-905. DOI: <https://doi.org/10.1105/tpc.13.4.889>
- [39] Thorlby G, Fourier N, Warren G. The *SENSITIVE TO FREEZING2* gene, required for freezing tolerance in *Arabidopsis thaliana*, encodes a β -glucosidase. *The Plant Cell*. 2004;**16**:2192-2203. DOI: 10.1105/tpc.104.024018
- [40] Lipka V, Dittgen J, Bednarek P, Bhat R, Wiermer M, Stein M, Landtag J, Brandt W, Rosahl S, Scheel D, Llorente F, Molina A, Parker J, Somerville S, Schulze-Lefert P. Pre- and post-invasion defenses both contribute to nonhost resistance in *Arabidopsis*. *Science*. 2005;**310**:1180-1183. DOI: 10.1126/science.1119409
- [41] Xu Z, Escamilla-Treviño LL, Zeng L, Lalgondar M, Bevan DR, Winkel BSJ, Mohamed A, Cheng C, Shih M, Poulton JE, Esen A. Functional genomic analysis of *Arabidopsis thaliana* glycoside hydrolase family 1. *Plant Molecular Biology*. 2004;**55**:343-367. DOI: 10.1007/s11103-004-0790-1
- [42] Opassiri R, Pomthong B, Okoksoong T, Akiyama T, Esen A, Ketudat Cairns JR. Analysis of rice glycosyl hydrolase family 1 and expression of Os4bglu12 beta-glucosidase. *BMC Plant Biology*. 2006;**6**:33. DOI: 10.1186/1471-2229-6-33
- [43] Hrmova M, Burton RA, Biely P, Lahnstein J, Fincher GB. Hydrolysis of (1,4)- β -D-mannans in barley (*Hordeum vulgare* L.) is mediated by the concerted action of (1,4)- β -D-mannan endohydrolase and β -D-mannosidase. *Biochemical Journal*. 2006;**399**:77-90. DOI: 10.1042/BJ20060170
- [44] Niemeyer HM. Hydroxamic acids (4-hydroxy-1,4-benzoxazin-3-ones), defense chemicals in the Gramineae. *Phytochemistry*. 1988;**27**:3349-3358. DOI: 10.1016/0031-9422(88)80731-3
- [45] Poulton JE. Cyanogenesis in plants. *Plant Physiology*. 1990;**94**:401-405. DOI: 10.1104/pp.94.2.401
- [46] Morant AV, Jørgensen K, Jørgensen C, Paquette SM, Sánchez-Perez R, Møller BL, Bak S. β -Glucosidases as detonators of plant chemical defense. *Phytochemistry*. 2008;**69**:1795-1813. DOI: 10.1016/j.phytochem.2008.03.006
- [47] Ketudat Cairns JR, Esen A. β -Glucosidases. *Cellular and Molecular Life Sciences*. 2010;**67**:3389-3405. DOI: 10.1007/s00018-010-0399-2
- [48] Krisch J, Takó M, Papp T, Vágvölgyi C. Characteristics and potential use of β -glucosidases from Zygomycetes. In: Méndez-Vilas A, editor. *Current Research, Technology and Education Topics in Applied Microbiology and Microbial Technology*. 1st ed. Singapore: World Scientific Publishing; 2009. pp. 891-896. DOI: 10.1142/7133
- [49] Varghese JN, Garrett TPJ, Colman PM, Chen L, Høj PB, Fincher GB. Three-dimensional structures of two plant beta-D-glucan endohydrolases with distinct substrate specificities. *Proceedings of the National Academy of Science USA*. 1994;**91**:2785-2789. DOI: 10.1073/pnas.91.7.2785

- [50] Jordan DB, Wagschal K. Properties and applications of microbial beta-D-xylosidases featuring the catalytically efficient enzyme from *Selenomonas ruminantium*. Applied Microbiology and Biotechnology. 2010;**86**:1647-1658. DOI: 10.1007/s00253-010-2538-y
- [51] Lima MS, Damasio ARL, Crnkovic PM, Pinto MR, da Silva AM, da Silva JCR, Segato F, de Lucas RC, Jorge JA, MLTM P. Co-cultivation of *Aspergillus nidulans* recombinant strains produces an enzymatic cocktail as alternative to alkaline sugarcane bagasse pre-treatment. Frontiers in Microbiology. 2016;**7**:583. DOI: 10.3389/fmicb.2016.00583
- [52] Gupta VK, Steindorff AS, de Paula RG, Silva-Rocha R, Mach-Aigner AR, Mach RL, Silva RN. The post-genomic era of *Trichoderma reesei*: What's next? Trends in Biotechnology 2016;**34**:970-982. DOI: 10.1016/j.tibtech.2016.06.003
- [53] Sakka M, Tachino S, Katsuzaki H, van Dyk JS, Pletschke BI, Kimura T, Sakka K. Characterization of Xyn30A and Axx43A of *Bacillus licheniformis* SVD1 identified by its genomic analysis. Enzyme Microbiology and Technology. 2012;**51**:193-199. DOI: 10.1016/j.enzmictec.2012.06.003
- [54] Rinne PLH, Paul LK, Vahala J, Kangasjärvi J, van der Schoot C. Axillary buds are dwarfed shoots that tightly regulate GA pathway and GA-inducible 1,3- β -glucanase genes during branching in hybrid aspen. Journal of Experimental Botany. 2016;**67**:5975-5991. DOI: 10.1093/jxb/erw352
- [55] Leubner-Metzger G, Meins F Jr, Datta SK, Muthukrishnan S. Functions and regulation of plant beta-1,3-glucanases (PR-2). In: Datta SK, Muthukrishnan S. Pathogenesis-Related Proteins in Plants. 1st ed. Boca Raton: CRC Press LLC; 1999, p. 49-76. DOI: 10.1201/9781420049299.ch3
- [56] Sela-Buurlage MB, Ponstein AS, Bres-Vloemans SA, Melchers LS, Van Den Elzen P, Cornelissen B. Only specific tobacco (*Nicotiana tabacum*) chitinases and [beta]-1,3-glucanases exhibit antifungal activity. Plant Physiology. 1993;**101**:857-863. DOI: 10.1104/pp.101.3.857
- [57] Jach G, Görnhardt B, Mundy J, Logemman J, Pinsdorf E, Leah R, Schell J, Maas C. Enhanced quantitative resistance against fungal disease by combinatorial expression of different barley antifungal proteins in transgenic tobacco. The Plant Journal. 1995;**8**:97-109. DOI: 10.1046/j.1365-313X.1995.08010097.x
- [58] Hamamouch N, Li C, Hewezi T, Baum TJ, Mitchum MG, Hussey RS, Vodkin LO, Davis EL. The interaction of the novel 30C02 cyst nematode effector protein with a plant β -1,3-endoglucanase may suppress host defence to promote parasitism. Journal of Experimental Botany. 2012;**63**:3683-3696. DOI: 10.1093/jxb/ers058
- [59] Hoj PB, Fincher GB. Molecular evolution of plant beta-glucan endohydrolases. The Plant Journal. 1995;**7**:367-379. DOI: 10.1046/j.1365-313X.1995.7030367.x
- [60] Leubner-Metzger G. Functions and regulation of β -1,3-glucanases during seed germination, dormancy release and after-ripening. Seed Science Research. 2003;**13**:17-34. DOI: 10.1079/ssr2002121

- [61] Doxey AC, Yaish MW, Moffatt BA, Griffith M, McConkey BJ. Functional divergence in the *Arabidopsis* beta-1,3-glucanase gene family inferred by phylogenetic reconstruction of expression states. *Molecular Biology and Evolution*. 2007;**24**:1045-1055. DOI: 10.1093/molbev/msm024
- [62] Rinne PL, Welling A, Vahala J, Ripel L, Ruonala R, Kangasjärvi J, van der Schoot C. Chilling of dormant buds hyperinduces *FLOWERING LOCUS T* and recruits GA-inducible 1,3-beta-glucanases to reopen signal conduits and release dormancy in *Populus*. *The Plant Cell*. 2011;**23**:130-146. DOI: 10.1105/tpc.110.081307
- [63] Maule AJ, Benitez-Alfonso Y, Faulkner C. Plasmodesmata—Membrane tunnels with attitude. *Current Opinion in Plant Biology*. 2011;**14**:683-690. DOI: 10.1016/j.pbi.2011.07.007
- [64] Benitez-Alfonso Y, Faulkner C, Pendle A, Miyashima S, Helariutta Y, Maule A. Symplastic intercellular connectivity regulates lateral root patterning. *Developmental Cell*. 2013;**26**:136-147. DOI: 10.1016/j.devcel.2013.06.010
- [65] Sager R, Lee JY. Plasmodesmata in integrated cell signaling: Insights from development and environmental signals and stresses. *Journal of Experimental Botany*. 2014;**65**:6337-6358. DOI: 10.1093/jxb/eru365
- [66] Henrissat B, Davies GJ. Glycoside hydrolases and glycosyltransferases. Families, modules, and implications for genomics. *Plant Physiology*. 2000;**124**:1515-1519. DOI: 10.1104/pp.124.4.1515
- [67] Barral P, Suárez C, Batanero E, Alfonso C, Alché JD, Rodríguez-García MI, Villalba M, Ribas G, Rodríguez R. An olive pollen protein with allergenic activity, Ole e 10, defines a novel family of carbohydrate-binding modules and is potentially implicated in pollen germination. *Biochemical Journal*. 2005;**390**:77-84. DOI: 10.1042/BJ20050456
- [68] Borner GH, Sherrier DJ, Stevens TJ, Arkin IT, Dupree P. Prediction of glycosylphosphatidylinositol-anchored proteins in *Arabidopsis*. A genomic analysis. *Plant Physiology*. 2002;**129**:486-499. DOI: 10.1104/pp.010884
- [69] Schlumbaum A, Mauch F, Vögeli U, Boller T. Plant chitinases are potent inhibitors of fungal growth. *Nature*. 1986;**324**:365-367. DOI: 10.1038/324365a0
- [70] Mauch F, Mauch-Mani B, Boller T. Antifungal hydrolases in pea tissue. *Plant Physiology*. 1988;**88**:936-942. DOI: 10.1104/pp.88.3.936
- [71] Vierheilig H, Alt M, Neyhais JM, Boller T, Wiemhen A. Colonization of transgenic *Nicotiana glauca* plants, expressing different forms of *Nicotiana glauca* chitinase, by the root pathogen *Rhizoctonia solani* and by the mycorrhizal symbiont *Glomus mosseae*. *Molecular Plant-Microbe Interactions*. 1993;**6**:261-264
- [72] Zhu Q, Maher EA, Masoud S, Dixon RA, Lamb CJ. Enhanced protection against fungal attack by constitutive co-expression of chitinase and glucanase genes in transgenic tobacco. *Nature Biotechnology*. 1994;**12**:807-812. DOI: 10.1038/nbt0894-807
- [73] Gow N, Latge JP, Munro CA. The fungal cell wall: Structure, biosynthesis, and function. *Microbiology Spectrum*. 2017;**5**:3. DOI: 10.1128/microbiolspec.FUNK-0035-2016

- [74] Broglie K, Chet I, Holliday M, Cressman R, Biddle P, Knowlton S, Mauvais CJ, Broglie R. Transgenic plants with enhanced resistance to the fungal pathogen *Rhizotocnia solani*. *Science*. 1991;**254**:1194-1197. DOI: 10.1126/science.254.5035.1194
- [75] Lin W, Anuratha CS, Datta K, Potrykus I, Muthukrishnan S, Datta SK. Genetic engineering of rice for resistance to sheath blight. *Biotechnology*. 1995;**13**:686-691. DOI: 10.1038/nbt0795-686
- [76] Dey PM, Dixon RA. *Biochemistry of Storage Carbohydrates in Green Plants*. 1st ed. London: Academic Press; 1986. p. 1054. DOI: 10.1002/food.19860301033
- [77] Masahiro E, Takashi M, Megumi I, Toshiiji T. Structural and functional analysis of tomato β -galactosidase 4: Insight into the substrate specificity of the fruit softening-related enzyme. *The Plant Journal*. 2016;**86**:300-307. DOI: 10.1111/tpj.13160
- [78] Henrissat B. A classification of glycosyl hydrolases based on amino-acid sequence similarities. *Journal of Biochemistry*. 1991;**280**:309-316. DOI: 10.1042/bj2800309
- [79] de Alcântara PH, Martim L, Silva CO, Dietrich SM, Buckeridge MS. Purification of a β -galactosidase from cotyledons of *Hymenaea courbaril* L. (Leguminosae). Enzyme properties and biological function. *Plant Physiology and Biochemistry*. 2006;**44**:619-627. DOI: 10.1016/j.plaphy.2006.10.007
- [80] Kotake T, Dina S, Konishi T, Kaneko S, Igarashi K, Samejima M, Watanabe Y, Kimura K, Tsumuraya Y. Molecular cloning of a β -galactosidase from radish that specifically hydrolyzes β -(1 \rightarrow 3)- and β -(1 \rightarrow 6)-galactosyl residues of arabinogalactan protein. *Plant Physiology*. 2005;**138**(3). DOI: 10.1104/pp.105.062562
- [81] Ross GS, Redgwell RJ, MacRae EA. Kiwifruit β -galactosidase: Isolation and activity against specific fruit cell-wall polysaccharides. *Planta*. 1993;**189**:499-506. DOI: 10.1007/BF00198212
- [82] de Veau EJI, Gross KC, Huber DJ, Watada AE. Degradation and solubilization of pectin by β -galactosidases purified from avocado mesocarp. *Physiologia Plantarum*. 1993;**87**:279-285. DOI: 10.1111/j.1399-3054.1993.tb01731.x
- [83] Buckeridge MS, Reid JS. Purification and properties of a novel β -galactosidase or exo-(1 \rightarrow 4)-b-D-galactanase from the cotyledons of germinated *Lupinus angustifolius* L. seeds. *Planta*. 1994;**192**:502-511. DOI: 10.1007/BF00203588
- [84] Ali ZM, Armugam S, Lazan H. β -Galactosidase and its significance in ripening mango fruit. *Phytochemistry*. 1995;**38**:1109-1114. DOI: 10.1016/0031-9422(94)00804-3
- [85] Lazan H, Ng SY, Goh LY, Ali ZM. Papaya β -galactosidase/galactanase isoforms in differential cell wall hydrolysis and fruit softening during ripening. *Plant Physiology and Biochemistry*. 2004;**42**:847-853. DOI: 10.1016/j.plaphy.2004.10.007
- [86] Wu Z, Burns JK. A β -galactosidase gene is expressed during mature fruit abscission of Valencia orange (*Citrus sinensis*). *Journal of Experimental Botany*. 2004;**55**:1483-1490. DOI: 10.1093/jxb/erh163

- [87] Ferreira SS, Hotta CT, Poelking VGC, Leite DC, Buckeridge MS, Loureiro ME, Barbosa MH, Carneiro MS, Souza GM. Co-expression network analysis reveals transcription factors associated to cell wall biosynthesis in sugarcane. *Plant Molecular Biology*. 2016; **91**:15-35. DOI: 10.1007/s11103-016-0434-2
- [88] de Souza AP, Leite DCC, Pattathil S, Hahn MG, Buckeridge MS. Composition and structure of sugarcane cell wall polysaccharides: Implications for second-generation bioethanol production. *Bioenergy Research*. 2013;**6**:564-579. DOI: 10.1007/s12155-012-9268-1