

We are IntechOpen, the world's leading publisher of Open Access books Built by scientists, for scientists

6,900

Open access books available

186,000

International authors and editors

200M

Downloads

Our authors are among the

154

Countries delivered to

TOP 1%

most cited scientists

12.2%

Contributors from top 500 universities



WEB OF SCIENCE™

Selection of our books indexed in the Book Citation Index
in Web of Science™ Core Collection (BKCI)

Interested in publishing with us?
Contact book.department@intechopen.com

Numbers displayed above are based on latest data collected.
For more information visit www.intechopen.com



Advances in Autism Research – The Genomic Basis of ASD

Melanie Lacaria and James R. Lupski

Additional information is available at the end of the chapter

<http://dx.doi.org/10.5772/53689>

1. Introduction

Many of the recent advances in autism research that have provided fundamental insight into this condition have come from the application of genetic/genomic approaches; these advances have been fomented by the advent of new technologies to interrogate the entire genome, such as array comparative genomic hybridization (aCGH), single nucleotide polymorphism (SNP) microarrays, transcriptome sequencing, and whole genome or whole exome sequencing (WGS/WES) [1]. With the recent advancement of these technologies over more traditional, lower-resolution technologies such as cytogenetic analysis, came the ability to interrogate the entire genome at a high-resolution. With the improvement of next-generation sequencing technology, as well as the reduction in the cost of this technique, WGS is becoming more commonplace in the search for novel disease-causing variants in individual patients. Alternatively, many studies have utilized WES, as it is less costly than sequencing the entire genome and coding simple nucleotide variants (SNVs) can often be more readily interpreted given knowledge provided by the genetic code. While the reduced cost and more readily interpretable variation have proven to be distinct advantages of this method over whole-genome sequencing, it is well known that many other variants in non-coding or regulatory regions can be pathogenic, and they typically cannot be discerned by whole-exome sequencing, which requires a targeted-capture step to enrich for and focus analysis on the coding sequences of all annotated protein-coding genes [2, 3]. Furthermore, repetitive or G-C rich regions or highly homologous sequences are often excluded by WES, and copy number variations (CNVs) usually cannot be accurately called due to the use of PCR-based sample preparation methods. Nonetheless, the utility of WGS/WES in individual patient diagnosis and management has been demonstrated by several recent reports [4-6].

Some of the first studies providing a high-resolution view of the entire genome have revealed that a large number of CNVs are present in the genomes of healthy individuals, and that CNVs account for a greater proportion of the nucleotide variation between two given individual genomes than can be attributed to SNVs [7-9]. These structural alterations can reach up to several megabases in length, but a much higher frequency is observed for smaller (<1 kb) CNVs [2]. And, as one would expect, the likelihood of CNVs becoming pathogenic rises when they have an increased size and/or occur in gene-dense regions of the genome [8]. Traditionally, structural variation (CNV) was not considered to play a causative role in autism or ASD. However, recent studies have revealed that not only single-gene alterations, but also CNVs can lead to autism or ASD. In fact, it is now becoming increasingly evident that CNVs account for a larger proportion of new autism diagnoses than single-gene disorders. Recurrent CNVs at specific genomic loci have been associated with autism, including 15q11-q13, 16p11.2, 17p11.2, 22q13.3, 7q11.23, and 2q37, among others [1, 10-16]. While several of these loci are associated with known Centers for Mendelian Genomics, numerous CNVs have also been observed in idiopathic autism, underscoring the importance of these structural variations in the future of all types of autism research [17].

The application of next-generation sequencing technology to evaluate CNVs has also recently been described in a report that utilized whole-transcriptome sequencing analysis of the genomes of a cohort of patients with autism spectrum disorder (ASD) [18]. This approach allows for the evaluation of CNVs and overcomes some of the problems associated with CNV-calling in WES. With several large-scale projects currently underway, the future of next-generation sequencing and whole-genome analysis in the study of autism will most definitely provide many new insights into the etiology of this disease. Currently, Autism Speaks is working in collaboration with the company BGI to generate the largest database of sequenced genomes of individuals with ASD, a project known as the "Autism Genome 10K." Similarly, the National Institute of Mental Health in the US has funded another large-scale "Autism Genome Project." Mendelian/syndromic forms of autism are also currently being studied by the Genomic Disorders consortium in the US by WES.

Among the variants identified in the large-scale studies of patients with autism reported to date, many gene networks/pathways have been implicated, including genes for neuronal adhesion [18, 19], ubiquitin degradation [19], chromatin remodelling [5, 20], sodium channels [13], proteolysis [21], cytoskeletal organization [21], signal transduction [18], neuropeptide signalling [18], neurogenesis/synaptogenesis [18], neuronal migration [22], basic metabolism, and RNA splicing [22], among others. While these pathways may seem diverse, repeated "hits" in these networks support the "many genes, common pathway" hypothesis [22]. Importantly, although the biological function of ASD susceptibility genes identified via these whole-genome studies do not appear to lie within the same network, they likely converge to disrupt neuronal function in brain regions that support language, social cognition, and behavioral flexibility, resulting in the phenotypes commonly associated with ASD [22].

2. Chromosome engineering mouse models for ASD

Since ASD is known to be a highly heterogeneous disorder with both genetic and environmental components, modeling the disease in rodents, where environmental and background effects can be largely controlled and systematically manipulated and studied, is of great advantage in the study of the pathomechanisms underpinning autism. Furthermore, numerous tools for genetic manipulation and for behavioral analysis that are currently available and developed for genetic studies in rodents can be leveraged to facilitate this avenue of research. Importantly, behavioral assays have been developed and validated to objectively quantify the phenotypes relative to autism, including both core and associated autistic-like phenotypes, such as abnormal social behavior, communication deficits, and repetitive behaviors, as well as autism-associated anxiety-like behaviors, motor defects, learning and memory deficits, sleep disorders, sensory hypersensitivity, and seizures, among others [23] (Table 1; adapted from Crawley et al, where a full description of these behavioral tests can be found; [23]).

With the importance of CNVs in the etiology of ASD established, chromosome-engineered mouse models were then generated for the study of autism or ASD. The first such mouse strains were developed over a decade ago using a chromosome-engineering approach [24]. This technique allows for the creation of a targeted duplication or deletion in the desired location by first generating the rearrangement in mouse embryonic stem (ES) cells which can then be established as mouse strains via *Cre/loxP* site-specific recombination [25, 26]. To generate the desired rearrangement, two gene-targeting steps are required to prepare each end point for a selectable recombination event (Figure 1). Importantly, the type of rearrangement (deletion, duplication, inversion) depends on the relative orientation of the *loxP* sites; if the sites are in the same orientation, the region between them can be deleted or duplicated, but if they are in opposite orientation, an inversion results [25]. The *cis* or *trans* configuration is also relevant; *trans* insertion (insertion in each chromosome homologue) of *loxP* sites enables generation of both deletion and duplication in the same ES cells. Transient transfection of the ES cells with a vector expressing *Cre* recombinase facilitates the recombination between the targeted *loxP* sites, and cells containing the event can be selected for using hypoxanthine aminopterin thymidine (HAT)-containing media due to the reconstitution of a functional Hprt cassette as a result of the recombination [25]. The resulting mouse models harbor either a chromosomal duplication or deletion of a defined region that is syntenic to the copy number variable region in humans. Importantly, chromosome-engineered mouse models are distinct from monogenic animal models in that they harbor structural chromosomal rearrangements resulting in specific, targeted CNVs with genomic intervals that may span several megabases and contain numerous genes, many of which may be of unknown function. In contrast, monogenic animal models primarily utilize a reverse-genetics approach to knock-out or transgenically-overexpress the specific single gene of interest, limiting the study to that one particular gene. A publicly-available resource can facilitate chromosome engineering for the targeted manipulation of the mouse genome; the mutagenic insertion and chromosome engineering resource (MICER) can be utilized to access vectors to create chromosomal rearrangements or to study gene disruptions in a high-throughput manner [27]. (<http://www.sanger.ac.uk/resources/mouse/micer/>).

Core features of autism	Analogous feature/assay in mice
Abnormal social interactions	Preference for social novelty
	Social recognition
	Home cage monitoring - nesting patterns
	Direct social interactions / juvenile play
	Social approach to a stranger mouse
Impaired social communication	Vocalizations during direct social interaction
	Parental retrieval of separated pups
	Ultrasonic vocalizations by separated pups
	Response to olfactory cues
Repetitive or restrictive behavior	Perseverative holeboard exploration
	Behavioral stereotypies/ home cage observation
	Reversal of a position habit in maze tasks
	Marble burying
	Novel object exploration
ASD- Associated features	Analogous feature/assay in mice
Anxiety	Elevated plus maze
	Light/dark exploration
	Open field analysis
Theory of mind deficits	Social transmission of food preference
	Avoidance of aggressive encounters
Intellectual disability	Morris water maze
	Contextual and cued fear conditioning
	T-maze
Motor defects	Rotarod test for motor learning
	Wire hang
	Dowel walking
	Footprint analysis
Aggression	Resident intruder attack
	Tube test for social dominance
Sleep disturbances	Circadian running wheel
	Home cage monitoring - activity levels
Hypersensitivity to sensory stimuli	Pre-pulse inhibition
	Acoustic startle
	Hot plate test for nociception
Seizures	Sensitivity to audiogenic or drug-induced seizures

Table 1. Behavioral tests for the evaluation of autistic-like features in mice

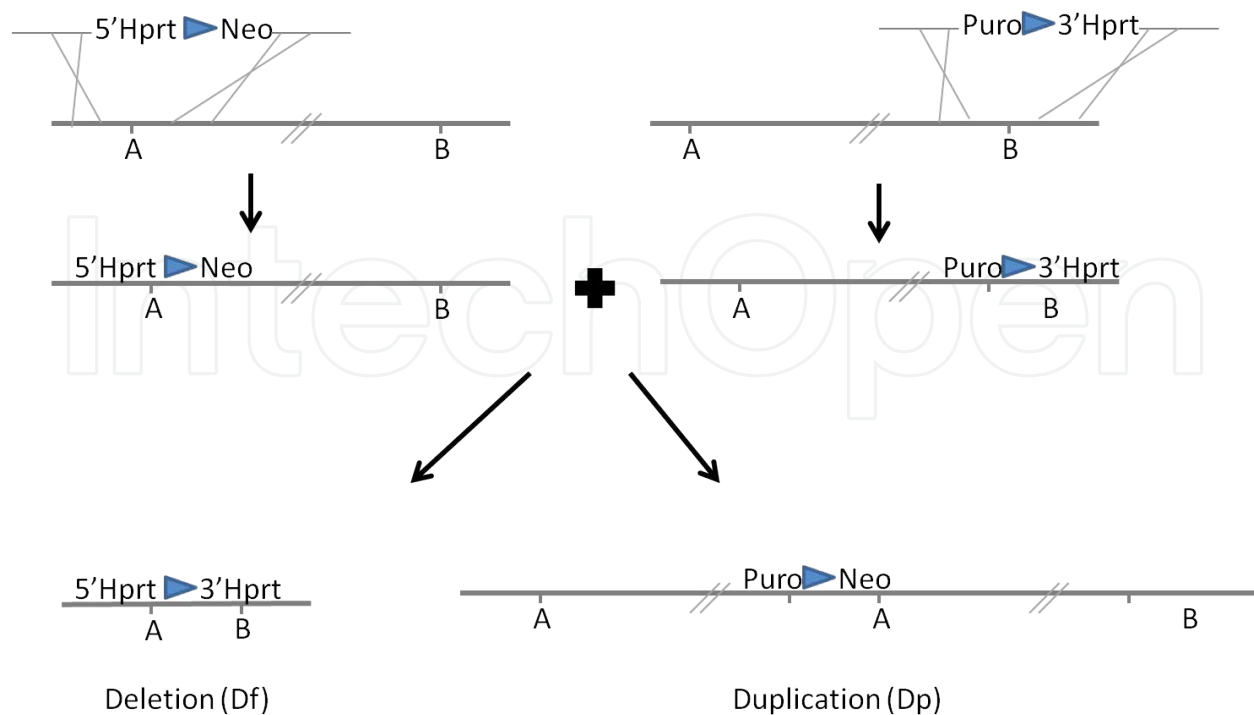


Figure 1. Generating defined chromosome rearrangements. Defined endpoints of the desired interval for rearrangement (A and B) are modified by gene targeting in embryonic stem (ES) cells to allow for introduction of a *loxP* site (blue triangle), a non-functional portion of the HPRT cassette [5' or 3'], and a positive selectable marker (Neo or Puro). The targeted ES cells are then transiently transfected with a vector expressing *Cre* recombinase, which facilitates recombination between the *loxP* sites, resulting in either deletion (Df) or duplication (Dp) of the intervening region. In this example, reconstitution of the Hprt cassette via recombination between *loxP* sites lying in a shared intron between the two halves confers resistance to hypoxanthine aminopterin thymidine (HAT), which can be used to select for the deletion event. Two positive selectable markers (Puro and Neo) identify the duplication event. A full explanation of this technology and more examples of chromosome recombineering are outlined by Mills et al [25].

We will discuss specific examples of chromosome-engineered mouse models of ASD for which the neurobehavioral phenotypes have been described using established rodent behavioral assays, including mice harboring duplication or deletion of the genomic interval syntenic to human chromosome 16p11.2, 15q11-q13, and 17p11.2, which all model CNVs that have been identified in patient populations with autism [28-30]. Most of the CNV-based animal models of ASD described to date have focused on syndromic forms of autism, as the underlying genetic cause of these genomic disorders is often well-described.

By definition, genomic disorders result from structural changes in the genome, wherein the genomic instability often reflects a susceptible genome architecture, that leads to disease traits [31]. These structural rearrangements or CNVs commonly cause the disruption or complete loss or gain of dosage-sensitive gene(s). Alternatively, CNVs can cause gene fusion, position effects, transvection effects, or the unmasking of a recessive allele or functional polymorphism [32]. Genomic disorders are therefore distinct from traditional genetic syndromes, which are typically caused by DNA sequence-based changes [33]. Within the past decade, several technologies, including array comparative genomic hybridization (aCGH), next-generation sequencing, and single nucleotide polymorphism (SNP) genotyp-

ing platforms, have been utilized to detect and analyze CNVs in the genome and to investigate the mechanism by which these CNVs are generated [34]. CNVs can be formed by several mechanisms, such as non-allelic homologous recombination (NAHR), non-homologous end joining (NHEJ), or fork stalling and template switching (FoSTeS) [35]. NAHR, which is often mediated by low copy repeats (LCRs) with high (~95%) sequence similarity flanking the rearranged region, is the most common mechanism by which recurrent CNVs are created. Often this mechanism can result in recurrent genomic rearrangements that are observed in multiple patients with the same disorder, as in Charcot-Marie-Tooth disease type 1A, Prader-Willi syndrome, and Smith-Magenis Syndrome, among many others [32, 33]. The genomic architecture rendering genomic instability at three loci that are enriched for LCRs are shown in Figure 2.

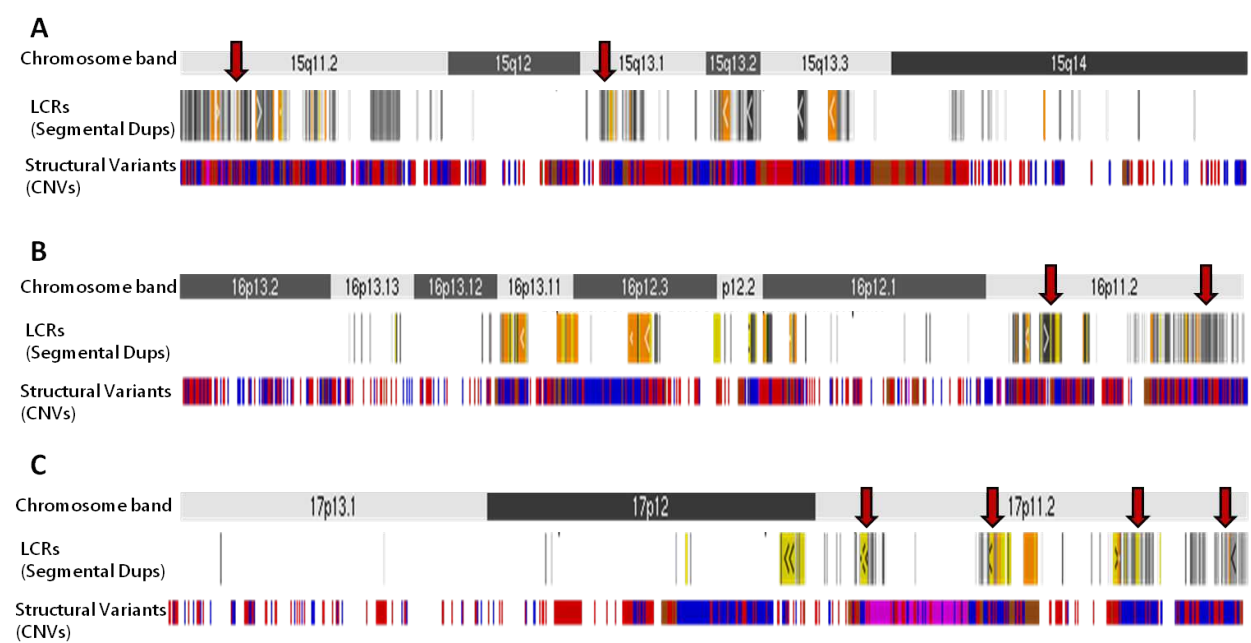


Figure 2. The genomic structure of loci associated with CNV-based ASD. (A) Chromosomes 15q11-13, **(B)** 16p11.2, and **(C)** 17p11.2, are enriched for LCRs, or segmental duplications (indicated by red arrows), which facilitate non-allelic homologous recombination (NAHR), resulting in the generation of CNVs (blue and red bars). This figure was generated using the genome browser provided by UCSC (<http://genome.ucsc.edu/index.html?org=Human&db=hg18&hgsid=289381925>).

3. ASD associated with CNVs on chromosome 16p11.2

In recent years, whole genome analyses of cohorts of patients with autism have identified recurrent CNVs on chromosome 16p11.2, effectively linking reciprocal microduplications and microdeletions at this locus with increased susceptibility to ASD [12, 36-39]. Importantly, further studies have revealed that CNVs at this locus are responsible for ~1% of all ASD diagnoses, making it the most common CNV to be associated with ASD identified to date

[13]. The 16p11.2 locus is flanked by two directly repeated segmental duplications of ~145 kb, which mediate the NAHR that results in the loss or gain of ~600 kb intermediate region containing ~27 protein-coding genes [9, 12, 40].

Interestingly, the microduplication of this region has also been linked to schizophrenia, suggesting the presence of an underlying biological link between these two disorders [41, 42]. This phenomenon also gives a potential genetic basis for the hypothesis of Crespi et al, which states that autism and schizophrenia represent diametric disorders of the social brain [43]. Thus, schizophrenia and autism might reflect mirror traits of the opposing extremes of behavioral phenotypes reflecting evolution of the social brain [43]. The phenotypes caused by CNV at the 16p11.2 locus are extremely heterogeneous, and, in addition to ASD, they have been reported to include metabolic disorders [44-47], cardiac anomalies [40, 48], depressive disorder [49], speech delay [50], mental retardation [40, 51, 52], vertebral anomalies [52], syringomyelia [53], abnormal head size [36], and epilepsy [36, 40], as well as other various congenital anomalies and behavioral abnormalities [44]. As the phenotypes of many more patients harboring CNVs in this genomic region are delineated, the full phenotypic spectrum associated with this locus will likely become more well-defined, and the critical genomic interval and dosage-sensitive genes responsible for the phenotypes will be determined. Indeed, a more recent study described a patient pedigree for a family with multiple generations of autism or ASD that also carry a smaller-sized deletion within the common deletion of 16p11.2, thereby reducing the “critical” interval for ASD to a 118 kb region containing only 5 genes: *MVP*, *CDIPT1*, *SEZ6L2*, *ASPHD1*, and *KCTD13* [54]. To date, none of these genes have been significantly associated with an elevated risk for ASD, which indicates that the situation is likely much more complex [37, 55]. Furthermore, correlation between the phenotypes of patients harboring different- or similar-sized CNVs is confounded by extreme heterogeneity and variability of symptoms. For example, a family with three affected members harboring identical 16p11.2 deletions was recently described to have minimal symptom overlap between family members [56]. Subsequent studies have aimed at using model organisms to identify the key dosage-sensitive genes within this region that give rise to the abnormal phenotypes [29, 57, 58]. Among these, chromosome-engineered mouse models harboring reciprocal deletion or duplication of the mouse chromosome syntenic to human chromosome 16p11.2 have been generated to study the physiological and behavioral phenotypes associated with these chromosome abnormalities [29].

4. Animal models for human 16p11.2 CNVs

Mouse models were generated through a chromosome engineering approach for the study of human 16p11.2 deletion and duplication CNVs [29]. It was observed that ~50% of mice harboring the deletion CNV die shortly after birth, while duplication mice survive to adulthood, suggesting that the deletion CNV results in a more severe phenotype than the duplication [29]. A similar phenomenon has been observed in other genomic disorders caused by reciprocal CNVs, including Smith-Magenis and Potocki-Lupski syndromes [15]. Expression of the genes within the 16p11.2 region corresponds to gene dos-

age in four brain regions that may be relevant for autism, including the olfactory bulbs, cortex, cerebellum, and brainstem [29].

In-cage neurobehavioral phenotypes were assessed in these mice to determine what, if any, affect these CNVs had on autistic-like behaviors. As expected, deletion mice displayed the most abnormal phenotypes, while duplication mice had fewer and milder symptoms. Interestingly, reciprocal phenotypes were sometimes observed for mice harboring reciprocal CNVs. For example, the amount of time spent resting in the cage was lower in deletion mice but higher in duplication mice relative to controls, indicating that 16p11.2 CNVs affect the rate and timing of specific behaviors in a dosage-dependent manner. Deletion mice displayed an abnormal ceiling-climbing behavior where they demonstrated marked stereotypic and nonprogressive motor behaviors, similar to what is often observed in patients with autism or patients with lateral hypothalamic and nigrostriatal lesions in the brain. These abnormal behaviors were accompanied by volumetric and morphological changes in several brain regions, including the lateral hypothalamus. Importantly, the difference between deletion mice and duplication mice was greater than that between deletion mice and controls, indicating that these effects are reciprocal or opposing in nature.

No significant abnormal social behavior was observed in these animal models in the 3-chamber test for sociability, indicating either that these animals do not display social abnormalities, or that further investigation into the social behavior of these animals is required. Indeed, with the subtle nature of many social interactions in rodents, it is quite possible that social abnormalities exist in these mice but have not yet been described. It is also distinctly possible that the 'in-cage' environment does not elicit a social deficit that might perhaps be observed in the wild or natural environment of the animal. An extensive battery of tests for social behavior will be required to rule out the possibility of further abnormalities.

Many of the genes mapped to the altered region have unknown function, and therefore, unknown significance or contribution to the disease phenotype. In order to further delineate the function of the dosage-sensitive genes within the common duplication/deletion region, zebrafish models were generated [57, 58]. The first study aimed to investigate the diametric head size phenotypes linked to this locus, as in addition to ASD, deletion is known to result in macrocephaly, and duplication gives rise to microcephaly [36, 57]. In this study, zebrafish were utilized for an *in vivo* overexpression screen, which identified the gene *KCTD13* as the likely candidate for the neurodevelopmental phenotypes associated with CNVs at 16p11.2. Interestingly, this gene was also one of the 5 genes found in a minimal critical deletion interval for ASD [54]. Overexpression of this gene in zebrafish resulted in microcephaly, while the reciprocal reduced expression of this locus by morpholino oligonucleotides resulted in macrocephaly, thereby mirroring the phenotypes seen in humans harboring CNVs at this locus [57]. Further study revealed that the function of this gene is likely conserved across species, and it is required to maintain the proliferative status of cortical progenitor cells in mice [57]. Furthermore, this gene is affected in a complex genomic rearrangement identified in a patient with autism [57]. Taken together, these results indicate that *KCTD13* is a likely candidate for further study of the neurological phenotypes associated with CNV at this locus.

Another study was able to identify homologs of 21 of the known 16p11.2 human genes in the zebrafish genome by family tree comparisons [58]. These genes were then targeted for loss of function studies by injecting antisense morpholino oligonucleotides into early embryos [58]. Interestingly ~79% of the genes tested by this method were required for proper brain, eye, or nervous system development, and two of the genes were determined to be dosage-sensitive, with abnormal phenotypes present with a ~50% reduction in gene expression [58]. The results of this study suggest that at least two genes, aldolase a (*aldoaa*) and kinesin family member 22 (*kif22*), are highly dosage-sensitive and are required for proper brain function, making them likely candidates for future studies of the ASD associated with CNV of this region [58].

These two studies indicate that while *kctd13*, *kif22*, and *aldoaa* are all potentially interesting dosage-sensitive candidate genes, further investigation is needed to determine whether these genes act together in an epistatic manner to contribute to the full neurological phenotype, whether they modify each other via *cis* interactions, or whether other genes or genetic elements in the 16p11.2 locus are also contributing to the phenotype. The current data, which could not have been obtained without these important studies in model organisms, cannot distinguish between these possibilities, but they provide a starting point for research into the function of these genes and the molecular pathways underpinning the phenotypes associated with 16p11.2 CNVs.

5. Prader-Willi and Angelman syndromes

Chromosome 15q11-13 is enriched for LCRs, providing a mechanism for LCR-mediated NAHR, and generating a series of recurrent breakpoints along this chromosome. As a result, interstitial deletion or duplication of this region is common. LCRs can also mediate triplications, or, alternatively, the presence of supernumerary isodicentric chromosome 15 (idic(15)) can lead to crossing over between these LCRs, and ultimately, duplication of the region. A bipartite imprinting center lies at this locus and directs the expression of a number of genes, resulting in a tissue-specific parent-of-origin effect. As a result, many of the phenotypes caused by these structural rearrangements also display parent-of-origin effects.

Paternally- or maternally-inherited deletions of human chromosome 15q11-13 result in Prader-Willi syndrome (PWS) or Angelman syndrome (AS), respectively. Alternatively, these disorders can be caused by uniparental disomy (UPD), or by balanced translocations involving this region. Less frequently, imprinting errors, leading to aberrant methylation of the PWS imprinting center can also cause PWS, and mutations or deletions in the gene *UBE3A* can cause AS [11, 59]. The critical region for AS lies 35 kb telomeric to the PWS critical region [60]. PWS is characterized by intellectual disability, hypotonia, hyperphagia, obesity, compulsive and repetitive behaviors, skin picking, tantrums, irritability. In addition, congenital abnormalities are often observed, including hypogonadism, facial dysmorphism, and small hands and feet, among others. PWS can also be associated with psychosis, mood disorders, and ASD [61].

AS is a neurodevelopmental disorder that is characterized by severe developmental delay, intellectual disability, microcephaly, seizures, lack of speech, ataxia, and dysmorphic facial features [11, 59]. Patients with AS are often described as having happy demeanors, however hyperactivity, attention deficits, aggression, and repetitive or stereotypic behaviors have also been described [59]. AS has been associated with ASD in several studies, however, the severity of the cognitive impairments in most patients with AS may preclude an accurate diagnosis [11, 59].

6. Duplication of 15q11-13

It has been estimated that up to ~5% of cases of ASD can be attributed to maternal duplication of the genomic region reciprocal to the PWS-AS critical region on chromosome 15q11-13, making it one of the most common chromosomal abnormalities observed in patients with ASD [10, 62]. Due to the presence of imprinting at this locus (discussed above), parent-of-origin effects are seen, and, for interstitial duplications, maternal origin confers an increased risk for clinical phenotypes. Paternal duplications are much less common, and do not appear to lead to ASD, as familial cases have been described where a seemingly normal carrier mother transmits a paternally-derived duplication to their child [63]. However, a small number of subjects with paternal duplication of 15q11-13 and various clinical phenotypes have been described [64]. Phenotypes are dosage-sensitive at this locus; one extra maternal copy of 15q11-13 results in partial autism penetrance, while two extra copies (caused by *idic15* or interstitial triplication) result in a much higher penetrance of autism as well as additional phenotypes that are typically more severe than those seen in patients with duplications [62]. In the case of triplications, parent-of-origin effects are no longer observed, and both paternal and maternal duplications are associated with poor clinical outcomes [65]. This loss of parent-of-origin effects is interesting, and it may be an indication of the underlying mechanism that may give rise to a predisposition for these phenotypes. Many heterogeneous and complex phenotypes can be associated with increased copy number of this region including intellectual disability, apraxia, dyslexia, seizures, hypotonia, developmental delay, gait abnormalities, hyperactivity, schizophrenia, and ASD [66]. Patients with ASD due to duplication of 15q11-13 also display several stereotypic and repetitive behaviors, including rocking, licking, and hand-flapping, among others, that are often directed towards sensory stimulation, suggesting that the underlying cause of these phenotypes may be due to a dysregulation of sensory inputs or signaling [63, 64].

Interestingly, recent post-mortem evaluation of the brains of patients harboring maternal duplication of 15q11-13 suggested that accumulation and deposition of abnormal intracellular and extracellular amyloid β protein ($A\beta$) in the specific regions and neuron types in the brains of patients with maternal duplication of 15q11-13 may underlie or contribute to some of the neurobehavioral phenotypes associated with ASD [67]. However, further studies are needed to confirm this hypothesis. Several animal models for the CNV-based syndromes associated with chromosome 15q11-13 have been developed to facilitate research into these disorders.

7. Modeling 15q11-13 CNVs in mice

The first mouse model for PWS was generated by targeted deletion of part of the imprinting center on chromosome 15q11-13 [68]. While these mice model several aspects of PWS, including hypersensitivity to sensory input in the form of increased acoustic startle response and decreased prepulse inhibition, it is not known whether these mice exhibit other autistic-like behaviors, such as impaired social interactions or altered communication [69]. Further behavioral characterization is needed to determine whether these mice accurately recapitulate the neurobehavioral phenotypes seen in patients with PWS and/or ASD.

Mouse models for Angelman syndrome were initially generated by disrupting maternal expression of *Ube3a*; these mice exhibit increased anxiety-like behavior that may be due to the disruption of a glucocorticoid receptor transactivation in the brain [70]. They also display various motor defects [71], abnormal cerebellum-driven licking behavior [72], sleep disturbance [73], abnormal EEG patterns, and cognitive defects in the conditioned fear and Morris water maze tests [74]. However, these mice displayed hypoactivity and normal social seeking behavior, in contrast to what is seen in human patients with AS and/or ASD [75]. Importantly, human patients with mutations in *UBE3A* typically have a milder phenotype than those patients harboring interstitial deletions, so this mouse model may not accurately reflect the majority of AS patients, who have a deletion containing this gene, as well as many other genes at this locus. Indeed, when a larger 1.6 Mb deletion model was generated by chromosome engineering that encompasses the genomic region from *Ube3a* to *Gabrb3*, the phenotype of these mice was more severe than that of mice with deletion of *Ube3a* alone [76]. Similar to *Ube3a* deficient mice, large deletion mice had significant motor impairment, anxiety-like behavior, and abnormal EEG, but they also had learning and memory defects and abnormal communication [76]. These larger deletion mice may be an appropriate model for CNV-associated ASD, however further investigation into the social neurobehavioral phenotypes is necessary.

Chromosome-engineered mouse models harboring a duplication of 6.3 Mb on mouse chromosome 7 syntenic to the duplication of human chromosome 15q11-13 associated with ASD were developed to study the underlying mechanism behind the phenotypes associated with this CNV in humans [28]. The core features of autism, including abnormal social interactions, stereotypic or ritualistic behavior, and impaired communication were all evaluated in this mouse model, and *patDp/+*, but not *matDp/+* mice were determined to have reduced sociability compared to wild-type mice. Ultrasonic vocalizations were evaluated in pups separated from the dam, and an abnormal USV pattern was observed in *patDp/+* but not *matDp/+* mice. Specifically, *patDp/+* mice appeared to have delayed development of communication, they emitted a greater number of USVs, and some pups emitted vocalizations at abnormally high frequencies (>70 kHz). In order to evaluate communication between older mice, pairs of mice 7-8 weeks of age were observed in a resident intruder paradigm and the pattern of USVs was measured during this interaction. Vocal communication between pairs of *patDp/+* mice was significantly reduced compared to the vocalization recorded between WT pairs, giving further support to the notion that *patDp/+* mice have a defect in social

communication. However, no defects in olfactory communication or function were observed in these mice. Restricted behaviors and inflexibility were evaluated with a battery of behavioral tests, including the Morris water maze and the Barnes maze. These tests revealed that *patDp/+* mice do not respond as flexibly to a change in situation as wild-type or *matDp/+* mice. No overt defects in learning and memory were observed in either the *patDp/+* or *matDp/+* mice by the Morris water maze or conditioned fear test, although *patDp/+* mice did display generalized fear and elevated anxiety-like behavior. The abnormal neurobehavioral phenotypes observed in this CNV-based model of ASD could not be attributed to gross morphological or histological changes in the olfactory bulb, cerebral cortex, hippocampus, amygdala, corpus callosum, or cerebellum. Nor were any abnormalities in the number of Purkinje cells detected in the cerebellum, suggesting that the underlying pathomechanism responsible for these phenotypes is likely due to aberrations in molecular pathways that remain to be determined.

The gene *Ube3a* (also known as E6-AP) codes for E3 ubiquitin-protein ligase, which belongs to a family of E3 ligase genes that are involved in synaptogenesis and have recently been linked to the pathogenesis of ASD [62]. Given the known association of the gene *UBE3A* with AS and its maternal-specific expression pattern in neurons, a mouse model that overexpresses this gene was generated to test the hypothesis that *Ube3a* is responsible for many of the phenotypes associated with duplication of 15q11-13 [62]. Transgenic overexpression of *Ube3a* via bacterial artificial chromosome (BAC) recombineering in mice resulted in autistic-like neurobehavioral phenotypes, including defects in communication, abnormal social behavior, and increased repetitive or stereotypic behavior [62]. Similar to the phenomenon observed in human patients, these effects were also determined to be dosage-sensitive, as the phenotypes were more penetrant in mice with three-fold overexpression of *Ube3a* than in those observed in mice with two-fold overexpression of this gene. Furthermore, it was determined that glutamatergic synaptic transmission was suppressed, providing a potential mechanism underlying the neurobehavioral phenotypes.

8. Smith-Magenis and Potocki-Lupski syndromes

Smith-Magenis syndrome (SMS) and Potocki-Lupski syndrome (PTLS) are two prototypical genomic disorders caused by reciprocal deletion (SMS) or duplication (PTLS) resulting in gene copy number variation on chromosome 17. SMS results from a *de novo*, recurrent, 3.7 Mb deletion in 17p11.2 – *del(17)(p11.2p11.2)* in ~73% of cases, that is a consequence of NAHR mediated by LCRs flanking the region [77-79]. However, many of the pleiotropic features of SMS appear to result from haploinsufficiency of a single gene lying in the middle of the SMS critical region, *retinoic acid induced 1 (RAI1)*, as determined by the identification of non-deletion SMS patients with heterozygous point mutations in *RAI1* [80-82]. Patients with mutations in *RAI1* manifest most of the phenotypes observed in subjects with a chromosomal SMS deletion, demonstrating that the reduced dosage of the *RAI1* gene alone may cause much of the SMS phenotype [81, 83].

Both SMS and PTLS manifest a broad range of opposing or overlapping phenotypes. SMS is characterized by multiple congenital anomalies, including otolaryngologic, ophthalmologic, brain, cardiac, craniofacial, and renal abnormalities, as well as intellectual disability (ID), brachydactyly, sleep disturbance, hearing impairment, obesity, scoliosis, and other neurobehavioral abnormalities [84, 85]. Specifically, SMS patients display aggressive and self-injurious behaviour, including polyembolokilomania [84], as well as characteristic repetitive behaviors, including autoamputation or “self-hugging,” which is an identifying feature of the disorder [86, 87]. More recently, SMS patients have also been described as meeting the criteria for autism spectrum disorder (ASD) [88].

The PTLS duplication was the first predicted reciprocal duplication to be described [89]. PTLS was identified and initially defined much later than SMS, ([89] versus Smith et al. 1986); as a result, fewer PTLS patients have been medically examined and fewer studies of the clinical phenotypes are available in the literature. The clinical features that have been observed in patients with PTLS are distinct from those seen in SMS [15], although cognitive and neurobehavioral abnormalities are present in both disorders. PTLS patients lack the self-injurious behaviors, abnormal facies, and sleep disturbance, as well as some of the congenital anomalies found in most individuals with SMS. The features observed in greater than 90% of PTLS patients are developmental delay, neurobehavioral abnormalities, language impairment, cognitive impairment, poor feeding, hypotonia, and oropharyngeal dysphasia [15, 90]. When evaluated by objective clinical assessment, the majority of PTLS patients have autistic features such as decreased eye contact, atypicality, withdrawal, anxiety, and inattention, meeting criteria for a diagnosis of autistic spectrum disorder (ASD) or pervasive developmental disorder not otherwise specified, and making ASD the most common and consistent feature observed in PTLS. [14].

Most PTLS patients have no distinctive facial abnormalities but they can have a triangular-shaped face. The other clinical features present in over half of patients include sleep apnea, abnormal EEG, attention deficit, hypermetropia, and cardiovascular abnormalities [15]. These cardiovascular abnormalities can typically include both structural and conduction defects, such as atrial or ventricular septal defects, bicuspid aortic valve, dilated aortic root, dilation of the pulmonary annulus, patent foramen ovale, or hypoplastic left heart [15, 91-93].

Upon molecular analysis, most [22 of 35] PTLS patients included in the first multidisciplinary study were determined to carry a common recurrent 3.7 Mb duplication in 17p11.2 mediated by the same proximal and distal SMS-REPs which also mediate the reciprocal common recurrent SMS deletion [15]. Others have uncommon and sometimes complex genomic rearrangements, all of which involve duplication in 17p11.2 [94]. The smallest PTLS duplication identified to date occurred in a single patient and is 1.3 Mb in size. This duplicated segment contains 14 genes, including both *RAI1*, the major contributing gene for the reciprocal deletion causing SMS, as well as the steroid-metabolism regulating gene, *SREBP1*. This patient demonstrates all typical PTLS phenotypes [94]. Whether, or to what extent, PTLS results from *RAI1* gene over-dosage still remains to be elucidated, although mouse studies (described below) have shown that it is likely responsible for at least some of the symptoms [95].

9. *RAI1*: Retinoic acid induced 1

Spanning over 120 kb, the *RAI1* gene consists of six exons, of which the third is the largest, containing >90% of the coding region [80, 85, 96]. All of the point mutations identified in SMS patients to date lie within this exon. Most of the mutations are frameshift or nonsense mutations occurring in a specific heptameric poly C tract hotspot region within *RAI1*, and thus likely cause loss-of-function alleles [82, 97].

The *RAI1* transcript is 7.6 kb, encoding a 1906-amino acid, ~200 kDa protein with several known domains, including an extended plant homeodomain (PHD) zinc finger in the carboxyl-terminus (residues 1832-1903; [80]), a polymorphic polyglutamine (CAG) tract in the N-terminus that is associated with the severity of the phenotype and medication response in patients with schizophrenia, as well as the age-at-onset of spino-cerebellar ataxia type 2 (SCA2) [96, 98], two polyserine tracts, two transactivation domains [99], and two bipartite nuclear localization signals (NLS). Importantly, the PHD in *Rai1* is highly conserved in the trithorax family of nuclear proteins involved in transcriptional regulation as well as in the formation of a chromatin remodeling complex, suggesting that *Rai1* may also function as a transcriptional regulator [100]. Further strengthening this connection, *Rai1* is known to be located in the nucleus and have transactivation activity [99], and it shares a similar genomic structure (>50% shared identity and similar zinc finger domains) with another gene, *TCF20*, or stromelysin1 platelet-derived growth factor (PDGF)-responsive element-binding protein (*SPBP*), which is known to act as a nuclear transcriptional cofactor [101].

In the human brain, *RAI1* is highly-expressed in the hippocampus and the cerebellar cortex, and it is globally-upregulated in the occipital, temporal, and parietal lobes according to expression data from the Allen Brain Atlas (Allen Institute for Brain Science). In contrast, it appears to be down-regulated in the cerebellar nuclei, corpus callosum, dorsal thalamus, and frontal lobe, suggesting that its expression is confined to specific brain regions. Similar to what is seen in humans, *Rai1* is also upregulated in the hippocampus and cerebellum of adult mice [102]. *Rai1* is critical for development, and the majority of *Rai1*^{-/-} mouse embryos are resorbed during development by E15.5 [99]. While *Rai1* expression is certainly necessary early in fetal development, according to expression data from mouse embryos, peak *Rai1* expression occurs at E18.5 and persists until P4 (Allen Brain Atlas), indicating that it is also required for post-natal development. Although the precise function of *RAI1/Rai1* is not currently understood, it is known to be part of a dosage-sensitive pathway that most likely regulates neuronal development and organogenesis, that, when perturbed, results in many of the phenotypes observed in both SMS and PTLs. Importantly, *RAI1* has been identified in a reconstructed human gene-network (Prioritizer) as an important candidate gene for involvement in idiopathic autism, suggesting that this gene may function in a common pathway that may influence ASD phenotypes in non-syndromic patients as well [103].

10. Modeling SMS and PTLs in rodents

Several mouse models interrogating the critical region for SMS and PTLs have been generated in the past decade in order to have an appropriate animal model system to evaluate the phenotypes in SMS and PTLs and to further study the molecular mechanism underlying these disorders. The first of these strains was developed in 2003 using a chromosome-engineering approach described earlier in this chapter [24]. The resulting mouse models harbour either a chromosomal duplication (*Dp(11)17*, modeling PTLs) or deletion (*Df(11)17*, modeling SMS) of ~2 Mb that is syntenic to the SMS/PTLS critical region. Soon after, several smaller deletion strains (~590 kb – 1 Mb) were created using retroviral insertion of *loxP* sites in ES cells with one fixed end, with the intent to determine which other genes in the critical region may contribute to the complex phenotypes in SMS [104, 105]. Once SMS patients with point mutations in *Rai1* were identified, a mouse model harbouring a truncated null allele for *Rai1* was generated via gene targeting to further study the function of this dosage-sensitive gene and to compare the phenotype of this model with that of the deletion strains [99, 102]. Likewise, a mouse model harbouring the *Rai1* transgene (*TgRai1*), and globally over-expressing *Rai1* at steady-state levels similar to those seen in *Dp(11)17/+* mice, was constructed to further study the function of this gene in PTLs [106].

Initial studies of *Dp(11)17/+* mice determined that they have reduced weight, reduced abdominal and inguinal fat, and reduced spleen weight [24]. Upon analysis of some of the behavioral traits of these mice, it was determined that they display anxiety-like behaviors, have reduced maximum startle response during the pre-pulse inhibition test, and defects in contextual fear conditioning [107], as well as several other abnormal social behaviors, including decreased nesting, abnormal sociability, and dominant behaviour [108]. Further investigation into the neurobehavioral abnormalities in these mice found that they also have decreased preference for social novelty, motor defects, and increased activity levels in the open field [109]. Many of these behavioral phenotypes are reciprocal or opposing to those seen in *Df(11)17/+* mice, underscoring the dosage-sensitive nature of these disorders [109]. For example, a recent study investigating cerebellum-driven licking behavior in *Dp(11)17/+* and *Df(11)17/+* mice found that many of the quantitative licking behavior parameters analyzed were altered in a directly-opposing manner [110]. Specifically, the interval between visits to the waterspout, number of licks per visit, and variability in the number of licks per lick-burst were all altered in duplication and deletion animals in opposite directions compared to wild-type mice (ex: longer versus shorter intervals, etc).

Recently, an extensive battery of behavioral tests were performed and *Dp(11)17/+* mice were observed to display complex social abnormalities, including defects in social recognition, dominant and aggressive behavior, as well as abnormal response to social odors [30]. Furthermore, these mice were shown to have altered communication, anxiety-like behavior, disordered circadian rhythm, learning and memory deficits, motor defects, and stereotypic, repetitive behaviors, confirming that these mice model both the core and associated features of autism. In addition, rearing these mice in an enriched environment mitigated or rescued

certain neurobehavioral abnormalities, suggesting a role for gene-environment interactions in the determination of copy number variation-mediated autism severity [30].

The phenotypic changes observed in *Dp(11)17/+* and *Df(11)17/+* mice are accompanied by changes in gene expression; on average, transcripts in the critical interval are expressed at 138 + 29% of wild-type levels in *Dp(11)17/+* mice, and at 66 + 15% of wild-type levels in *Df(11)17/+* mice [109]. The expression level of these genes can be normalized to roughly that of wild-type mice by crossing *Dp(11)17/+* and *Df(11)17/+* mice to create a double heterozygote carrying two copies of the genes within the critical region in *cis*, (as opposed to the typical *trans* orientation in wild-type mice). However, the presence of the structural variation itself affects expression of genes outside the affected interval, resulting in “genome regulation” that may ultimately contribute to the phenotype. As a result, these double heterozygous mice display some abnormal behaviors, including elevated activity levels and decreased preference for social novelty [109].

When *Rai1* is over-expressed in mice (*Rai1-Tg*, modeling PTLs), these mice have growth retardation, are underweight, display anxiety-like behavior, social dominance, motor abnormalities, and have increased motor activity in juvenile mice. Furthermore, there is a dosage-dependent exacerbation of this phenotype [106]. These mice also display abnormal maternal behavior, altered sociability, reduced reproductive fitness, and impaired serotonin metabolism [111]. Together these results suggest that *Rai1-Tg* mice display a complex neurobehavioral and metabolic phenotype similar to that of mice harboring the *Dp(11)17* CNV, suggesting that *RAI1* is likely responsible for some, if not many of the phenotypes identified in PTLs. Further support for this hypothesis is indicated by studies of *Dp(11)17/Rai1* double-heterozygous mice with normalized copy number of *Rai1*, but increased dosage of the surrounding interval; this study revealed that normalization of *Rai1* copy number was able to correct weight differences, and at least partially rescue phenotypes on behavioral tests for locomotor activity, anxiety, and learning and memory [95].

11. Gene-environment interactions

While genetic defects play a part in the etiology of ASD, environmental effects have long been thought to contribute to these disorders. For example, although the majority of SMS/PTLS patients present with either deletion or duplication of the same ~3.7 Mb gene-dense region, there is significant variability in the clinical phenotype [112]. Furthermore, while there are some significant differences in the incidence of the abnormalities in patients with the common deletion/duplication compared to those patients with smaller or larger-sized CNVs, a clear distinction between these sub-groups of patients cannot be made; many of these phenotypes are therefore likely strongly influenced by genetic background as well as environmental effects [83, 94]. While gene-environment interactions may potentially explain the source of the variability seen in these syndromes, investigation into the specific environmental factors that may affect outcomes for these genomic disorders has yet to be undertaken.

Chromosome-engineered mouse models for ASD are ideal for the study of complex disease, as they are mechanistically similar to human patients (targeted duplication/deletion syntenic to human critical interval), they are polygenic (numerous genes are affected), the observed phenotypes equate with common, clinically described features (neurobehavioral phenotypes, sleep disorder, etc), and they can be influenced by environmental factors. In addition, autism is known to be highly variable, and it is suspected to be dependent on both genetic and environmental factors, such as low birth weight and gestational age, prenatal exposure to various agents, parental age at birth, diet, infection, xenobiotic and pesticide exposure, among others [113]. Many of these environmental insults are amenable to study using mouse models, as the interaction of these environmental factors with CNVs can be directly tested in congeneric mouse models to control for the effects of genetic background.

Molecular analysis of these mouse models, as well as patient samples, can also be utilized to dissect the role of specific genes or CNVs responsible for the susceptibility to the influence of environmental factors in these autism-related syndromes. Most importantly, the results of these types of studies can provide useful insights as to how genes/CNVs can interact with environmental factors in the context of complex human diseases; this may lead to strategies to alleviate symptoms of not only rare genomic disorders, but also more common idiopathic forms of autism or ASD. Furthermore, these models represent an important resource for future studies of the pathomechanisms underlying ASD, as well as potential treatments for ASD. They may also foster further investigation into the genomic basis of autism and complex behavior, as well the underlying genetic mechanisms leading to these pathogenic CNVs. In studying CNV-based models for complex genomic disorders and ASD, we have come to realize that the ideal animal models of ASD should not only phenocopy relevant human symptoms, but the phenotypes should also be based on similar underlying physiological and genetic mechanisms.

Author details

Melanie Lacaria¹ and James R. Lupski^{1,2}

*Address all correspondence to: jlupski@bcm.edu

1 Department of Molecular and Human Genetics, Baylor College of Medicine, Houston, TX, USA

2 Department of Pediatrics, Baylor College of Medicine, and Texas Children's Hospital, Houston, TX, USA

References

- [1] Jacquemont ML, Sanlaville D, Redon R, Raoul O, Cormier-Daire V, Lyonnet S, et al. Array-based comparative genomic hybridisation identifies high frequency of cryptic

- chromosomal rearrangements in patients with syndromic autism spectrum disorders. *J Med Genet.* 2006 Nov;43[11]:843-9.
- [2] Gonzaga-Jauregui C, Lupski JR, Gibbs RA. Human genome sequencing in health and disease. *Annu Rev Med.* 2012;63:35-61.
 - [3] Bras J, Guerreiro R, Hardy J. Use of next-generation sequencing and other whole-genome strategies to dissect neurological disease. *Nat Rev Neurosci.* 2012;13([7]):453-64.
 - [4] Bainbridge MN, Wiszniewski W, Murdock DR, Friedman J, Gonzaga-Jauregui C, Newsham I, et al. Whole-genome sequencing for optimized patient management. *Sci Transl Med.* 2011 Jun 15;3[87]:87re3.
 - [5] O'Roak BJ, Deriziotis P, Lee C, Vives L, Schwartz JJ, Girirajan S, et al. Exome sequencing in sporadic autism spectrum disorders identifies severe de novo mutations. *Nat Genet.* 2011 Jun;43([6]):585-9.
 - [6] Neale BM, Kou Y, Liu L, Ma'ayan A, Samocha KE, Sabo A, et al. Patterns and rates of exonic de novo mutations in autism spectrum disorders. *Nature.* 2012 May 10;485[7397]:242-5.
 - [7] Ku CS, Polychronakos C, Tan EK, Naidoo N, Pawitan Y, Roukos DH, et al. A new paradigm emerges from the study of de novo mutations in the context of neurodevelopmental disease. *Mol Psychiatry.* 2012 May 29.
 - [8] Girirajan S, Campbell CD, Eichler EE. Human copy number variation and complex genetic disease. *Annu Rev Genet.* 2011;45:203-26.
 - [9] Sebat J, Lakshmi B, Malhotra D, Troge J, Lese-Martin C, Walsh T, et al. Strong association of de novo copy number mutations with autism. *Science.* 2007 Apr 20;316[5823]:445-9.
 - [10] Bolton PF, Veltman MW, Weisblatt E, Holmes JR, Thomas NS, Youings SA, et al. Chromosome 15q11-13 abnormalities and other medical conditions in individuals with autism spectrum disorders. *Psychiatr Genet.* 2004 Sep;14([3]):131-7.
 - [11] Hogart A, Wu D, LaSalle JM, Schanen NC. The comorbidity of autism with the genomic disorders of chromosome 15q11.2-q13. *Neurobiol Dis.* 2010 May;38([2]):181-91.
 - [12] Weiss LA, Shen Y, Korn JM, Arking DE, Miller DT, Fossdal R, et al. Association between microdeletion and microduplication at 16p11.2 and autism. *N Engl J Med.* 2008 Feb 14;358([7]):667-75.
 - [13] Sanders SJ, Ercan-Sencicek AG, Hus V, Luo R, Murtha MT, Moreno-De-Luca D, et al. Multiple recurrent de novo CNVs, including duplications of the 7q11.23 Williams syndrome region, are strongly associated with autism. *Neuron.* 2011 Jun 9;70([5]):863-85.

- [14] Treadwell-Deering DE, Powell MP, Potocki L. Cognitive and behavioral characterization of the Potocki-Lupski syndrome (duplication 17p11.2]. *J Dev Behav Pediatr.* 2010 Feb-Mar;31([2]):137-43.
- [15] Potocki L, Bi W, Treadwell-Deering D, Carvalho CM, Eifert A, Friedman EM, et al. Characterization of Potocki-Lupski syndrome (dup[17](p11.2p11.2)) and delineation of a dosage-sensitive critical interval that can convey an autism phenotype. *Am J Hum Genet.* 2007 Apr;80([4]):633-49.
- [16] Berg JS, Brunetti-Pierri N, Peters SU, Kang SH, Fong CT, Salamone J, et al. Speech delay and autism spectrum behaviors are frequently associated with duplication of the 7q11.23 Williams-Beuren syndrome region. *Genet Med.* 2007 Jul;9([7]):427-41.
- [17] Cho SC, Yim SH, Yoo HK, Kim MY, Jung GY, Shin GW, et al. Copy number variations associated with idiopathic autism identified by whole-genome microarray-based comparative genomic hybridization. *Psychiatr Genet.* 2009 Aug;19([4]):177-85.
- [18] Luo R, Sanders SJ, Tian Y, Voineagu I, Huang N, Chu SH, et al. Genome-wide Transcriptome Profiling Reveals the Functional Impact of Rare De Novo and Recurrent CNVs in Autism Spectrum Disorders. *Am J Hum Genet.* 2012 Jun 21.
- [19] Glessner JT, Wang K, Cai G, Korvatska O, Kim CE, Wood S, et al. Autism genome-wide copy number variation reveals ubiquitin and neuronal genes. *Nature.* 2009 May 28;459[7246]:569-73.
- [20] Talkowski ME, Mullegama SV, Rosenfeld JA, van Bon BW, Shen Y, Repnikova EA, et al. Assessment of 2q23.1 microdeletion syndrome implicates MBD5 as a single causal locus of intellectual disability, epilepsy, and autism spectrum disorder. *Am J Hum Genet.* 2011 Oct 7;89([4]):551-63.
- [21] Chahrour MH, Yu TW, Lim ET, Ataman B, Coulter ME, Hill RS, et al. Whole-exome sequencing and homozygosity analysis implicate depolarization-regulated neuronal genes in autism. *PLoS Genet.* 2012 8([4]):e1002635.
- [22] Geschwind DH. Autism: many genes, common pathways? *Cell.* 2008 Oct 31;135([3]):391-5.
- [23] Crawley JN. Mouse behavioral assays relevant to the symptoms of autism. *Brain Pathol.* 2007 Oct;17([4]):448-59.
- [24] Walz K, Caratini-Rivera S, Bi W, Fonseca P, Mansouri DL, Lynch J, et al. Modeling del[17](p11.2p11.2] and dup[17](p11.2p11.2] contiguous gene syndromes by chromosome engineering in mice: phenotypic consequences of gene dosage imbalance. *Mol Cell Biol.* 2003 May;23[10]:3646-55.
- [25] Mills AA, Bradley A. From mouse to man: generating megabase chromosome rearrangements. *Trends Genet.* 2001 Jun;17([6]):331-9.
- [26] van der Weyden L, Bradley A. Mouse chromosome engineering for modeling human disease. *Annu Rev Genomics Hum Genet.* 2006;7:247-76.

- [27] Adams DJ, Biggs PJ, Cox T, Davies R, van der Weyden L, Jonkers J, et al. Mutagenic insertion and chromosome engineering resource (MICER). *Nat Genet.* 2004 Aug; 36([8]):867-71.
- [28] Nakatani J, Tamada K, Hatanaka F, Ise S, Ohta H, Inoue K, et al. Abnormal behavior in a chromosome-engineered mouse model for human 15q11-13 duplication seen in autism. *Cell.* 2009 Jun 26;137([7]):1235-46.
- [29] Horev G, Ellegood J, Lerch JP, Son YE, Muthuswamy L, Vogel H, et al. Dosage-dependent phenotypes in models of 16p11.2 lesions found in autism. *Proc Natl Acad Sci U S A.* 2011 Oct 11;108[41]:17076-81.
- [30] Lacaria M, Spencer C, Gu W, Paylor R, Lupski JR. Enriched Rearing Improves Behavioral Responses of an Animal Model for CNV-based Autistic-like Traits. *Hum Mol Genet.* 2012 Jul 15;21(14):3083-96.
- [31] Lupski JR. Genomic disorders: structural features of the genome can lead to DNA rearrangements and human disease traits. *Trends Genet.* 1998 Oct;14[10]:417-22.
- [32] Lupski JR, Stankiewicz P. Genomic disorders: molecular mechanisms for rearrangements and conveyed phenotypes. *PLoS Genet.* 2005 Dec;1([6]):e49.
- [33] Lupski JR. Genomic disorders ten years on. *Genome Med.* 2009;1([4]):42.
- [34] Zhang F, Gu W, Hurles ME, Lupski JR. Copy number variation in human health, disease, and evolution. *Annu Rev Genomics Hum Genet.* 2009;10:451-81.
- [35] Gu W, Zhang F, Lupski JR. Mechanisms for human genomic rearrangements. *Pathogenetics.* 2008;1([1]):4.
- [36] Shinawi M, Liu P, Kang SH, Shen J, Belmont JW, Scott DA, et al. Recurrent reciprocal 16p11.2 rearrangements associated with global developmental delay, behavioural problems, dysmorphism, epilepsy, and abnormal head size. *J Med Genet.* 2009 May; 47([5]):332-41.
- [37] Kumar RA, Marshall CR, Badner JA, Babatz TD, Mukamel Z, Aldinger KA, et al. Association and mutation analyses of 16p11.2 autism candidate genes. *PLoS One.* 2009;4([2]):e4582.
- [38] Marshall CR, Noor A, Vincent JB, Lionel AC, Feuk L, Skaug J, et al. Structural variation of chromosomes in autism spectrum disorder. *Am J Hum Genet.* 2008 Feb; 82([2]):477-88.
- [39] Fernandez BA, Roberts W, Chung B, Weksberg R, Meyn S, Szatmari P, et al. Phenotypic spectrum associated with de novo and inherited deletions and duplications at 16p11.2 in individuals ascertained for diagnosis of autism spectrum disorder. *J Med Genet.* 2010 Mar;47([3]):195-203.
- [40] Ghebranious N, Giampietro PF, Wesbrook FP, Rezkalla SH. A novel microdeletion at 16p11.2 harbors candidate genes for aortic valve development, seizure disorder, and mild mental retardation. *Am J Med Genet A.* 2007 Jul 1;143A[13]:1462-71.

- [41] McCarthy SE, Makarov V, Kirov G, Addington AM, McClellan J, Yoon S, et al. Micro-duplications of 16p11.2 are associated with schizophrenia. *Nat Genet.* 2009 Nov; 41[11]:1223-7.
- [42] Lupski JR. Insights for autism from Charcot-Marie-Tooth disease. *SFARI.* September 27, 2011.
- [43] Crespi B, Badcock C. Psychosis and autism as diametrical disorders of the social brain. *Behav Brain Sci.* 2008 Jun;31([3]):241-61; discussion 61-320.
- [44] Jacquemont S, Reymond A, Zufferey F, Harewood L, Walters RG, Kutalik Z, et al. Mirror extreme BMI phenotypes associated with gene dosage at the chromosome 16p11.2 locus. *Nature.* 2011 Oct 6;478[7367]:97-102.
- [45] Yu Y, Zhu H, Miller DT, Gusella JF, Platt OS, Wu BL, et al. Age- and gender-dependent obesity in individuals with 16p11.2 deletion. *J Genet Genomics.* 2011 Sep 20;38([9]):403-9.
- [46] Perrone L, Marzuillo P, Grandone A, del Giudice EM. Chromosome 16p11.2 deletions: another piece in the genetic puzzle of childhood obesity. *Ital J Pediatr.* 2010;36:43.
- [47] Walters RG, Jacquemont S, Valsesia A, de Smith AJ, Martinet D, Andersson J, et al. A new highly penetrant form of obesity due to deletions on chromosome 16p11.2. *Nature.* 2010 Feb 4;463[7281]:671-5.
- [48] Puvabanditsin S, Nagar MS, Joshi M, Lambert G, Garrow E, Brandsma E. Microdeletion of 16p11.2 associated with endocardial fibroelastosis. *Am J Med Genet A.* 2010 Sep;152A([9]):2383-6.
- [49] Degenhardt F, Priebe L, Herms S, Mattheisen M, Muhleisen TW, Meier S, et al. Association between copy number variants in 16p11.2 and major depressive disorder in a German case-control sample. *Am J Med Genet B Neuropsychiatr Genet.* 2012 Apr; 159B([3]):263-73.
- [50] Rosenfeld JA, Coppinger J, Bejjani BA, Girirajan S, Eichler EE, Shaffer LG, et al. Speech delays and behavioral problems are the predominant features in individuals with developmental delays and 16p11.2 microdeletions and microduplications. *J Neurodev Disord.* Mar;2([1]):26-38.
- [51] Bijlsma EK, Gijbbers AC, Schuurs-Hoeijmakers JH, van Haeringen A, Fransen van de Putte DE, Anderlid BM, et al. Extending the phenotype of recurrent rearrangements of 16p11.2: deletions in mentally retarded patients without autism and in normal individuals. *Eur J Med Genet.* 2009 Mar-Jun;52[2-3]:77-87.
- [52] Shimojima K, Inoue T, Fujii Y, Ohno K, Yamamoto T. A familial 593-kb microdeletion of 16p11.2 associated with mental retardation and hemivertebrae. *Eur J Med Genet.* 2009 Nov-Dec;52([6]):433-5.

- [53] Schaaf CP, Goin-Kochel RP, Nowell KP, Hunter JV, Aleck KA, Cox S, et al. Expanding the clinical spectrum of the 16p11.2 chromosomal rearrangements: three patients with syringomyelia. *Eur J Hum Genet*. 2010 Feb;19([2]):152-6.
- [54] Crepel A, Steyaert J, De la Marche W, De Wolf V, Fryns JP, Noens I, et al. Narrowing the critical deletion region for autism spectrum disorders on 16p11.2. *Am J Med Genet B Neuropsychiatr Genet*. 2011 Mar;156([2]):243-5.
- [55] Konyukh M, Delorme R, Chaste P, Leblond C, Lemiere N, Nygren G, et al. Variations of the candidate SEZ6L2 gene on Chromosome 16p11.2 in patients with autism spectrum disorders and in human populations. *PLoS One*. 2011;6([3]):e17289.
- [56] Shen Y, Chen X, Wang L, Guo J, Shen J, An Y, et al. Intra-family phenotypic heterogeneity of 16p11.2 deletion carriers in a three-generation Chinese family. *Am J Med Genet B Neuropsychiatr Genet*. 2010 Mar;156([2]):225-32.
- [57] Golzio C, Willer J, Talkowski ME, Oh EC, Taniguchi Y, Jacquemont S, et al. KCTD13 is a major driver of mirrored neuroanatomical phenotypes of the 16p11.2 copy number variant. *Nature*. 2012 May 17;485[7398]:363-7.
- [58] Blaker-Lee A, Gupta S, McCammon JM, De Rienzo G, Sive H. Zebrafish homologs of genes within 16p11.2, a genomic region associated with brain disorders, are active during brain development, and include two deletion dosage sensor genes. *Dis Model Mech*. 2012 Nov;5(6):834-51..
- [59] Veltman MW, Craig EE, Bolton PF. Autism spectrum disorders in Prader-Willi and Angelman syndromes: a systematic review. *Psychiatr Genet*. 2005 Dec;15([4]):243-54.
- [60] Lalande M, Calciano MA. Molecular epigenetics of Angelman syndrome. *Cell Mol Life Sci*. 2007 Apr;64[7-8]:947-60.
- [61] Dykens EM, Lee E, Roof E. Prader-Willi syndrome and autism spectrum disorders: an evolving story. *J Neurodev Disord*. 2011 Sep;3([3]):225-37.
- [62] Smith SE, Zhou YD, Zhang G, Jin Z, Stoppel DC, Anderson MP. Increased gene dosage of Ube3a results in autism traits and decreased glutamate synaptic transmission in mice. *Sci Transl Med*. 2011 Oct 5;3[103]:103ra97.
- [63] Roberts SE, Dennis NR, Browne CE, Willatt L, Woods G, Cross I, et al. Characterisation of interstitial duplications and triplications of chromosome 15q11-q13. *Hum Genet*. 2002 Mar;110([3]):227-34.
- [64] Wegiel J, Schanen NC, Cook EH, Sigman M, Brown WT, Kuchna I, et al. Differences between the pattern of developmental abnormalities in autism associated with duplications 15q11.2-q13 and idiopathic autism. *J Neuropathol Exp Neurol*. 2012 May; 71([5]):382-97.
- [65] Ungaro P, Christian SL, Fantes JA, Mutirangura A, Black S, Reynolds J, et al. Molecular characterisation of four cases of intrachromosomal triplication of chromosome 15q11-q14. *J Med Genet*. 2001 Jan;38([1]):26-34.

- [66] Stewart LR, Hall AL, Kang SH, Shaw CA, Beaudet AL. High frequency of known copy number abnormalities and maternal duplication 15q11-q13 in patients with combined schizophrenia and epilepsy. *BMC Med Genet.* 2011;12:154.
- [67] Wegiel J, Frackowiak J, Mazur-Kolecka B, Schanen NC, Cook EH, Jr., Sigman M, et al. Abnormal intracellular accumulation and extracellular Abeta deposition in idiopathic and Dup15q11.2-q13 autism spectrum disorders. *PLoS One.* 2012;7([5]):e35414.
- [68] Yang T, Adamson TE, Resnick JL, Leff S, Wevrick R, Francke U, et al. A mouse model for Prader-Willi syndrome imprinting-centre mutations. *Nat Genet.* 1998 May;19([1]):25-31.
- [69] Relkovic D, Doe CM, Humby T, Johnstone KA, Resnick JL, Holland AJ, et al. Behavioural and cognitive abnormalities in an imprinting centre deletion mouse model for Prader-Willi syndrome. *Eur J Neurosci.* 2010 Jan;31([1]):156-64.
- [70] Godavarthi SK, Dey P, Maheshwari M, Jana NR. Defective glucocorticoid hormone receptor signaling leads to increased stress and anxiety in a mouse model of Angelman syndrome. *Hum Mol Genet.* 2012 Apr 15;21([8]):1824-34.
- [71] Mulherkar SA, Jana NR. Loss of dopaminergic neurons and resulting behavioural deficits in mouse model of Angelman syndrome. *Neurobiol Dis.* 2010 Dec;40([3]):586-92.
- [72] Heck DH, Zhao Y, Roy S, LeDoux MS, Reiter LT. Analysis of cerebellar function in Ube3a-deficient mice reveals novel genotype-specific behaviors. *Hum Mol Genet.* 2008 Jul 15;17([14]):2181-9.
- [73] Colas D, Cespuglio R, Sarda N. Sleep wake profile and EEG spectral power in young or old senescence accelerated mice. *Neurobiol Aging.* 2005 Feb;26([2]):265-73.
- [74] Miura K, Kishino T, Li E, Webber H, Dikkes P, Holmes GL, et al. Neurobehavioral and electroencephalographic abnormalities in Ube3a maternal-deficient mice. *Neurobiol Dis.* 2002 Mar;9([2]):149-59.
- [75] Allensworth M, Saha A, Reiter LT, Heck DH. Normal social seeking behavior, hypoactivity and reduced exploratory range in a mouse model of Angelman syndrome. *BMC Genet.* 2011;12:7.
- [76] Jiang YH, Pan Y, Zhu L, Landa L, Yoo J, Spencer C, et al. Altered ultrasonic vocalization and impaired learning and memory in Angelman syndrome mouse model with a large maternal deletion from Ube3a to Gabrb3. *PLoS One.* 2010;5([8]):e12278.
- [77] Bi W, Lupski JR. RAI1, the Smith–Magenis, and Potocki–Lupski Syndromes. In: Epstein CJ, Erickson RP, Wynshaw-Boris A, editors. *Inborn Errors of Development*; 2008.
- [78] Liu P, Lacaria M, Zhang F, Withers M, Hastings PJ, Lupski JR. Frequency of nonallelic homologous recombination is correlated with length of homology: evidence that

ectopic synapsis precedes ectopic crossing-over. *Am J Hum Genet.* 2011 Oct 7;89([4]):580-8.

- [79] Shaw CJ, Withers MA, Lupski JR. Uncommon deletions of the Smith-Magenis syndrome region can be recurrent when alternate low-copy repeats act as homologous recombination substrates. *Am J Hum Genet.* 2004 Jul;75([1]):75-81.
- [80] Bi W, Saifi GM, Shaw CJ, Walz K, Fonseca P, Wilson M, et al. Mutations of RAI1, a PHD-containing protein, in nondeletion patients with Smith-Magenis syndrome. *Hum Genet.* 2004 Nov;115([6]):515-24.
- [81] Slager RE, Newton TL, Vlangos CN, Finucane B, Elsea SH. Mutations in RAI1 associated with Smith-Magenis syndrome. *Nat Genet.* 2003 Apr;33([4]):466-8.
- [82] Bi W, Saifi GM, Girirajan S, Shi X, Szomju B, Firth H, et al. RAI1 point mutations, CAG repeat variation, and SNP analysis in non-deletion Smith-Magenis syndrome. *Am J Med Genet A.* 2006 Nov 15;140[22]:2454-63.
- [83] Edelman EA, Girirajan S, Finucane B, Patel PI, Lupski JR, Smith AC, et al. Gender, genotype, and phenotype differences in Smith-Magenis syndrome: a meta-analysis of 105 cases. *Clin Genet.* 2007 Jun;71([6]):540-50.
- [84] Greenberg F, Lewis RA, Potocki L, Glaze D, Parke J, Killian J, et al. Multi-disciplinary clinical study of Smith-Magenis syndrome (deletion 17p11.2). *Am J Med Genet.* 1996 Mar 29;62([3]):247-54.
- [85] Greenberg F, Guzzetta V, Montes de Oca-Luna R, Magenis RE, Smith AC, Richter SF, et al. Molecular analysis of the Smith-Magenis syndrome: a possible contiguous-gene syndrome associated with del[17](p11.2). *Am J Hum Genet.* 1991 Dec;49([6]):1207-18.
- [86] Finucane BM, Konar D, Haas-Givler B, Kurtz MB, Scott CI, Jr. The spasmodic upper-body squeeze: a characteristic behavior in Smith-Magenis syndrome. *Dev Med Child Neurol.* 1994 Jan;36([1]):78-83.
- [87] Arron K, Oliver C, Moss J, Berg K, Burbidge C. The prevalence and phenomenology of self-injurious and aggressive behaviour in genetic syndromes. *J Intellect Disabil Res.* 2010 Feb;55([2]):109-20.
- [88] Laje G, Morse R, Richter W, Ball J, Pao M, Smith AC. Autism spectrum features in Smith-Magenis syndrome. *Am J Med Genet C Semin Med Genet.* 2010 Nov 15;154C([4]):456-62.
- [89] Potocki L, Chen KS, Park SS, Osterholm DE, Withers MA, Kimonis V, et al. Molecular mechanism for duplication 17p11.2- the homologous recombination reciprocal of the Smith-Magenis microdeletion. *Nat Genet.* 2000 Jan;24([1]):84-7.
- [90] Soler-Alfonso C, Motil KJ, Turk CL, Robbins-Furman P, Friedman EM, Zhang F, et al. Potocki-Lupski syndrome: a microduplication syndrome associated with oropharyngeal dysphagia and failure to thrive. *J Pediatr.* 2010 Apr;158([4]):655-9 e2.

- [91] Yusupov R, Roberts AE, Lacro RV, Sandstrom M, Ligon AH. Potocki-Lupski syndrome: an inherited dup[17](p11.2p11.2) with hypoplastic left heart. *Am J Med Genet A*. 2011 Feb;155A([2]):367-71.
- [92] Sanchez-Valle A, Pierpont ME, Potocki L. The severe end of the spectrum: Hypoplastic left heart in Potocki-Lupski syndrome. *Am J Med Genet A*. Feb;155A([2]):363-6.
- [93] Jefferies JL, Pignatelli RH, Martinez HR, Robbins-Furman PJ, Liu P, Gu W, et al. Cardiovascular findings in duplication 17p11.2 syndrome. *Genet Med*. 2012 Jan;14([1]):90-4.
- [94] Zhang F, Potocki L, Sampson JB, Liu P, Sanchez-Valle A, Robbins-Furman P, et al. Identification of uncommon recurrent Potocki-Lupski syndrome-associated duplications and the distribution of rearrangement types and mechanisms in PTLs. *Am J Hum Genet*. 2010 Mar 12;86([3]):462-70.
- [95] Walz K, Paylor R, Yan J, Bi W, Lupski JR. Rai1 duplication causes physical and behavioral phenotypes in a mouse model of dup[17](p11.2p11.2). *J Clin Invest*. 2006 Nov;116[11]:3035-41.
- [96] Toulouse A, Rochefort D, Roussel J, Joobert R, Rouleau GA. Molecular cloning and characterization of human RAI1, a gene associated with schizophrenia. *Genomics*. 2003 Aug;82([2]):162-71.
- [97] Truong HT, Dudding T, Blanchard CL, Elsea SH. Frameshift mutation hotspot identified in Smith-Magenis syndrome: case report and review of literature. *BMC Med Genet*. 2010;11:142.
- [98] Hayes S, Turecki G, Brisebois K, Lopes-Cendes I, Gaspar C, Riess O, et al. CAG repeat length in RAI1 is associated with age at onset variability in spinocerebellar ataxia type 2 (SCA2). *Hum Mol Genet*. 2000 Jul 22;9[12]:1753-8.
- [99] Bi W, Ohshima T, Nakamura H, Yan J, Visvanathan J, Justice MJ, et al. Inactivation of Rai1 in mice recapitulates phenotypes observed in chromosome engineered mouse models for Smith-Magenis syndrome. *Hum Mol Genet*. 2005 Apr 15;14([8]):983-95.
- [100] Nakamura T, Mori T, Tada S, Krajewski W, Rozovskaia T, Wassell R, et al. ALL-1 is a histone methyltransferase that assembles a supercomplex of proteins involved in transcriptional regulation. *Mol Cell*. 2002 Nov;10([5]):1119-28.
- [101] Rekdal C, Sjøttem E, Johansen T. The nuclear factor SPBP contains different functional domains and stimulates the activity of various transcriptional activators. *J Biol Chem*. 2000 Dec 22;275[51]:40288-300.
- [102] Bi W, Yan J, Shi X, Yuva-Paylor LA, Antalffy BA, Goldman A, et al. Rai1 deficiency in mice causes learning impairment and motor dysfunction, whereas Rai1 heterozygous mice display minimal behavioral phenotypes. *Hum Mol Genet*. 2007 Aug 1;16[15]:1802-13.

- [103] van der Zwaag B, Franke L, Poot M, Hochstenbach R, Spierenburg HA, Vorstman JA, et al. Gene-network analysis identifies susceptibility genes related to glycobiology in autism. *PLoS One*. 2009;4([5]):e5324.
- [104] Yan J, Bi W, Lupski JR. Penetrance of craniofacial anomalies in mouse models of Smith-Magenis syndrome is modified by genomic sequence surrounding *Rai1*: not all null alleles are alike. *Am J Hum Genet*. 2007 Mar;80([3]):518-25.
- [105] Yan J, Keener VW, Bi W, Walz K, Bradley A, Justice MJ, et al. Reduced penetrance of craniofacial anomalies as a function of deletion size and genetic background in a chromosome engineered partial mouse model for Smith-Magenis syndrome. *Hum Mol Genet*. 2004 Nov 1;13[21]:2613-24.
- [106] Girirajan S, Patel N, Slager RE, Tokarz ME, Bucan M, Wiley JL, et al. How much is too much? Phenotypic consequences of *Rai1* overexpression in mice. *Eur J Hum Genet*. 2008 Aug;16([8]):941-54.
- [107] Walz K, Spencer C, Kaasik K, Lee CC, Lupski JR, Paylor R. Behavioral characterization of mouse models for Smith-Magenis syndrome and dup[17](p11.2p11.2). *Hum Mol Genet*. 2004 Feb 15;13([4]):367-78.
- [108] Molina J, Carmona-Mora P, Chrast J, Krall PM, Canales CP, Lupski JR, et al. Abnormal social behaviors and altered gene expression rates in a mouse model for Potocki-Lupski syndrome. *Hum Mol Genet*. 2008 Aug 15;17[16]:2486-95.
- [109] Ricard G, Molina J, Chrast J, Gu W, Gheldof N, Pradervand S, et al. Phenotypic consequences of copy number variation: insights from Smith-Magenis and Potocki-Lupski syndrome mouse models. *PLoS Biol*. 2010;8[11]:e1000543.
- [110] Heck D, Gu W, Cao Y, Qi S, Lacaria M, Lupski JR. Opposing phenotypes in mouse models for Smith-Magenis deletion and Potocki-Lupski duplication syndromes suggest gene dosage effects on fluid consumption behavior. *Am J Med Genet Part A*. 2012;9999:1-7.
- [111] Girirajan S, Elsea SH. Abnormal maternal behavior, altered sociability, and impaired serotonin metabolism in *Rai1*-transgenic mice. *Mamm Genome*. 2009 Apr;20([4]):247-55.
- [112] Potocki L, Shaw CJ, Stankiewicz P, Lupski JR. Variability in clinical phenotype despite common chromosomal deletion in Smith-Magenis syndrome [del[17](p11.2p11.2)]. *Genet Med*. 2003 Nov-Dec;5([6]):430-4.
- [113] Duchan E, Patel DR. Epidemiology of autism spectrum disorders. *Pediatr Clin North Am*. 2012 Feb;59([1]):27-43, ix-x.