

We are IntechOpen, the world's leading publisher of Open Access books Built by scientists, for scientists

6,900

Open access books available

186,000

International authors and editors

200M

Downloads

Our authors are among the

154

Countries delivered to

TOP 1%

most cited scientists

12.2%

Contributors from top 500 universities



WEB OF SCIENCE™

Selection of our books indexed in the Book Citation Index
in Web of Science™ Core Collection (BKCI)

Interested in publishing with us?
Contact book.department@intechopen.com

Numbers displayed above are based on latest data collected.
For more information visit www.intechopen.com



Improved Sample Preparation Methodology on Lime Mortar for Reliable ^{14}C Dating

Luis Angel Ortega¹, Maria Cruz Zuluaga¹, Ainhoa Alonso-Olazabal¹,
Maite Insausti², Xabier Murelaga³ and Alex Ibañez^{4,5}

¹*Mineralogy and Petrology Department,*

²*Inorganic Chemistry Department,*

³*Stratigraphy and Palaeontology Department, Science and Technology School,*

⁴*Social Sciences Department, School of Education,*

The University of the Basque Country,

⁵*Historical Archaeology Department, Aranzadi Society of Science,
Spain*

1. Introduction

Dating ancient buildings and establishing construction phases are important issues for archaeologists and cultural heritage researchers alike. When using radiometric dating to this end, the fundamental requirement consists in acquiring suitable datable material that records the age of the studied object.

Plaster and mortar are composite building materials comprising a mixture of binder and aggregates. Binders in archaeological buildings consist of lime and gypsum, whereas aggregates contain inorganic and organic materials (Sickels, 1981). The most common organic component is charcoal, most likely corresponding to residues of the burning process, especially when a continuous wood-fired kiln was used.

Up until now, building lime, sand, pottery, and organic materials from mortars have been used in dating (Folk & Valastro, 1976; Tubbs & Kinder, 1990; Heinemeier et al., 1997a; Schmid, 2001; Goedicke, 2003; Hale et al., 2003; Benea et al., 2007; Lindroos et al., 2007; Wintle, 2008). Organic materials are widely used to date mortar and plaster (Berger, 1992; Van Strydonck et al., 1992; Frumkin et al., 2003; Rech et al., 2003; Rech, 2004; Wyrwa et al., 2009; Al-Bashaireh & Hodgins, 2011) where no other easier datable material is present, such as written inscriptions, coins, and/or historical records (see Heinemeier et al., 1997b; Hale et al., 2003; Heinemeier et al., 2010). Tubbs and Kinder (1990) reported the unreliability of dating mortar based on organic inclusions because of the old wood problem. Recently, Heinemeier et al. (2010) have presented extensive examples of the same problem and also reached the same conclusion.

The lime mortar binder represents an often-used tool to assess the chronology of the different construction phases of buildings by means of radiocarbon dating. The principle of radiocarbon dating is that binder carbonates absorb carbon dioxide from the atmosphere,

thus making mortars potentially suitable for ^{14}C dating. The basis of mortar dating can be summarized as follows: limestone (mainly CaCO_3) is burned to lime (CaO) and this calcium oxide is then slaked with water to form portlandite ($\text{Ca}(\text{OH})_2$). The calcium hydroxide is mixed with sand and water to make the building mortar and, during hardening, the lime mortar absorbs carbon dioxide (CO_2) from the atmosphere to produce calcium carbonate (CaCO_3). During the hardening process, the actual ^{14}C concentration of CO_2 in air is fixed to the binder carbonate.

The method of radiocarbon dating has been applied since the 1960s (Labeyrie & Delibrias, 1964; Stuiver & Smith, 1965; Baxter & Walton, 1970; Van Strydonck et al., 1983; Van Strydonck et al., 1986; Ambers, 1987; Van Strydonck et al., 1992; Heinemeier et al., 1997a; Hiekkanen, 1998; Hale et al., 2003; Nawrocka et al., 2005; Lindroos et al., 2007; Nawrocka et al., 2007; Nawrocka et al., 2009; Heinemeier et al., 2010; Marzaioli et al., 2011), but frequently the isotopic age and the expected historic age differ, with the former providing older dates.

In dating building mortars, problems to obtain the correct age are common, often related to an adequate selection of binder carbonate. Unfortunately, most lime samples contain carbons of different provenances: incompletely burned limestone fragments, charcoal particles from wood-fired kilns, and aggregates. Aggregates are mainly natural sands. Depending on the geological and geographical location, it may also contain carbonate minerals, carbonate rock fragments, and calcareous fossils. So, the aggregates primarily constitute an additional source of contamination in carbon. Other potential problem in mortar dating is related to the hardening process. In view of the radio-chronological results some authors suggest that mortar lying on the inside of walls or behind stone facing can take years and decades (Van Strydonck & Dupas, 1991) and even centuries for voluminous structures (Sonninen et al., 1989) before the whole construction has carbonated. Thus yielding a date that is too young for the building as a whole. However, based on experimental works the hardening process of a mortar is relatively rapid compared with the half-life of ^{14}C (Pachiaudi et al., 1986; Lanias et al., 2005; Stefanidou & Papayianni, 2005; Kosednar-Legenstein et al., 2008; Ball et al., 2011). According to these researches the hardening is completed within weeks or months. Since the binder phase is constituted of small calcite grains (e.g. Stefanidou & Papayianni, 2005; Zamba et al., 2007; Ball et al., 2011; Marzaioli et al., 2011), an accurate selection of adequate lime grain-size fraction allows to date this rapid carbonation reaction.

Therefore, in order to eliminate these error sources, sample preparation procedures have been improved upon since the beginning of radiometric method dating. Most of these preparations consist of mechanical pre-treatment and chemical treatment (Sonninen & Jungner, 2001; Lindroos et al., 2007; Nawrocka et al., 2007; Goslar et al., 2009; Nawrocka et al., 2009; Heinemeier et al., 2010).

In mechanical separation, the mortar samples are gently broken and then sieved (different sized meshes are used). Van Strydonck et al. (1992) used a 250 μm sieve, whereas others (Heinemeier et al., 2010 and references therein) utilized an increasingly fine mesh ranging between 20–500 μm . Following mechanical separation, the mineral composition is analysed by petrographic microscopy supplemented with cathodoluminescence in order to identify binder contamination from aggregates and unburnt limestone (Heinemeier et al., 2010 and references therein). In chemical separation, binder carbonate is gradually dissolved by

pouring 85% phosphoric acid over the powder mortar under vacuum (Heinemeier et al., 2010), under the assumption that mortar binder carbonate dissolves much more easily than limestone. However, significant amounts of detrital carbonate and other carbon sources are also dissolved, therefore precluding the determination of the correct age.

In addition, mechanical methods involving manual disaggregation have been used as an alternative to the wet chemical method for mortars with calcareous aggregates (Cimitan et al., 1991; Casadio et al., 2005; Nawrocka et al., 2005; Ortega et al., 2008). Mechanical binder separation is recommended when carbonate contamination has been observed during petrographic analysis.

An effective separation method of very pure binder fraction to assess radiocarbon dating is proposed in the present contribution. The elimination of contaminant error sources and the suitable selection of mortar samples enable the reliable dating. Petrographic analysis under polarizing light microscopy is used to identify different mineralogical phases of mortar samples, aggregate nature, and the limestone fragment remains. It also provides the identification of possible features of mortar degradation (organic and inorganic) and, therefore, allows the selection of a suitable sample for radiocarbon dating. To obtain datable binder, thin-section assessment is essential and offers one of the most effective methods for mortar sampling. A more detailed microscopic analysis can be provided by Scanning Electron Microscopy, which allows contaminant error sources of the mortar sample on a small scale to be identified.

Once the aggregate nature and the occurrence of other carbonate materials are established, the binder carbonates are separated by a combined mechanical and physical procedure (Ortega et al., 2008). This method removes the carbonate fraction, lime lumps and the charcoal particles. The extraction procedure allows to obtain binder reliable for dating without using partial acid digestion and several radiocarbon measurements of complex interpretation. In order to test the effectiveness of mechanical separation and to verify the purity of the binder, Scanning Electron Microscope (SEM), X-ray diffraction (XRD) analyses and thermogravimetric analysis (TGA) were performed. To test the developed procedure, historic lime mortars from the parish church of Santa Maria la Real (Zarautz, northern Spain) have been ^{14}C dated.

2. Materials and methods

The mortars were thoroughly examined in the laboratory using a stereo-zoom microscope and carefully disaggregated to avoid breaking the existing aggregates.

Thin sections and polished sections of the mortars were prepared in an impregnation unit under vacuum with an epoxy resin. These were polished with $15\text{ }\mu\text{m}$ Al_2O_3 abrasive and the final lapping was performed with diamond pastes ($15\text{--}1\text{ }\mu\text{m}$). Thin-sections were analysed by light polarized microscopy using a petrographic polarizing Olympus BH2 microscope equipped with an Olympus DP-10 digital camera. Scanning electron microscopy observations were performed with a JEOL JSM-7000F Schottky-type field emission scanning electron microscope operating with an Oxford Pentafet photon energy instruments Link Isis X-ray (EDX) microanalysis system. Samples were carbon-coated to eliminate charging effects. The cathodoluminescence (CL) study was performed using a

Technosyn Cold Cathode Luminescence system, model 8200 Mk II, mounted on an Olympus trinocular research microscope with a maximum magnification capability of 400 x, using universal stage objectives. Standard operating conditions included an accelerating potential of 12 kV and 0.5–0.6 mA beam current with a beam diameter of approximately 5 mm. X-ray diffraction (XRD) was carried out using monochromatic Cu- α_1 X-radiation at 40 kV and 20 mA, speed of 0.05 °/s and 2 θ ranging from 3 to 74 from a Philips PW1710 diffractometer.

Thermogravimetric and differential thermal analysis were also performed in a TA SDT 2960 TG-DSC simultaneous instrument. Pt crucibles containing 5–7 mg of sample were heated at 2°C/min from room temperature to 1000 °C under dry oxidizing atmosphere. In order to verify the effectiveness of the separation method, several fractions during extraction process have been analyzed by above described techniques.

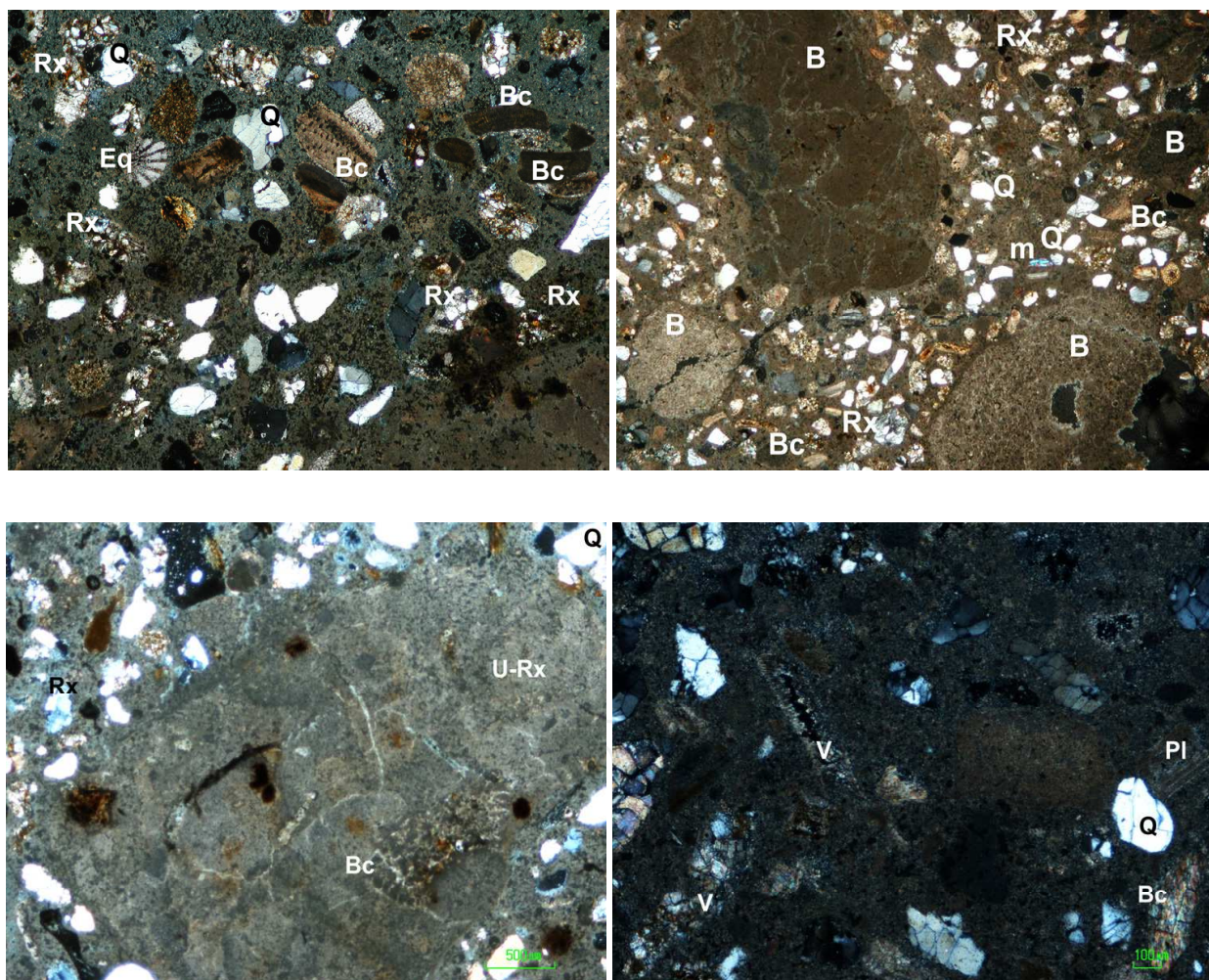


Fig. 1. Photomicrographs of historic lime-mortars. **A**. Binder with rounded quartz (Q), sandstones (Rx) and biogenic carbonate fragments (Bc: bioclasts, Eq: echinoderm). **B**. Carbonate "pure binder" globules (B) with fractures. Rx: rock fragments, m: muscovite, Q: quartz, Bc: bioclasts. **C**. Fossils inside of an unburned limestone fragment (U-Rx). Bc: bioclasts, Rx: rock fragments, Q: quartz. **D**. Void (V) filled with secondary carbonate. Q: quartz, Bc: bioclasts, Pl: plagioclase.

Before sample preparation for dating, the mortar samples were subjected to petrographic analyses in order to determine binder and aggregate types. Thin-section analysis shows that beach sand aggregates were used as a mortar mixture in all samples. Rounded detrital quartz fine grains, carbonate shell fragments, mainly bryozoa and ostracods (Fig. 1A) are common. Inorganic detrital carbonate fragments (micritic and sparitic limestone) has been hardly observed (Ortega et al., 2008). Pure carbonate globules, visible at a macroscopic and microscopic scale, are common (Fig. 1B). In previous works, these globules have been explained as not complete homogeneous mixture of lime binder and aggregates featured by the presence of retraction fractures (Nawrocka et al., 2005). However in this study, most of the globules constitute an incomplete burned limestone as suggest the occurrence of fossil fragments within these globules (Fig. 1C). The petrographic study also reveals the occurrence of voids and fractures in the mortars refilled with secondary carbonate (Fig. 1D).

Once established the mortar nature and determinate the grade of alteration cathodoluminescence analyses was performed over mortar thin section. This method is very useful complement to petrographic microscopy and is especially sensitive when it comes to distinguishing between carbonate phases with slightly different crystallinity and trace element chemistry (Marshall, 1988; Machel, 2000; Pagel, 2000). Natural calcites and dolomites in sedimentary rocks show luminescence in different colours and intensities revealing complex history of cements and crystal growth history (Marshall, 1988). The causes of the luminescence are defects in the crystal structure or impurities hosted in the crystal lattice. The cathodoluminescence of carbonates is mostly due to the presence of transitional elements and, in particular, to Mn^{2+} as a main activator ion (orange luminescence); Fe^{2+} is believed to be the most important quencher ion (Marshall, 1988; Corazza et al., 2001). The most important factor determining the colour and intensity of the luminescence is the $\text{Mn}^{2+}/\text{Fe}^{2+}$ ratio in the calcite (Habermann et al., 2000). The chemical activity of these ions is controlled by the decreasing pH in crystallizing calcite. So, is possible to assess how many carbonate contaminants are in the mortars by performing image analyses, but the results are at best only semi-quantitative due to many problems (Lindroos et al., 2007).

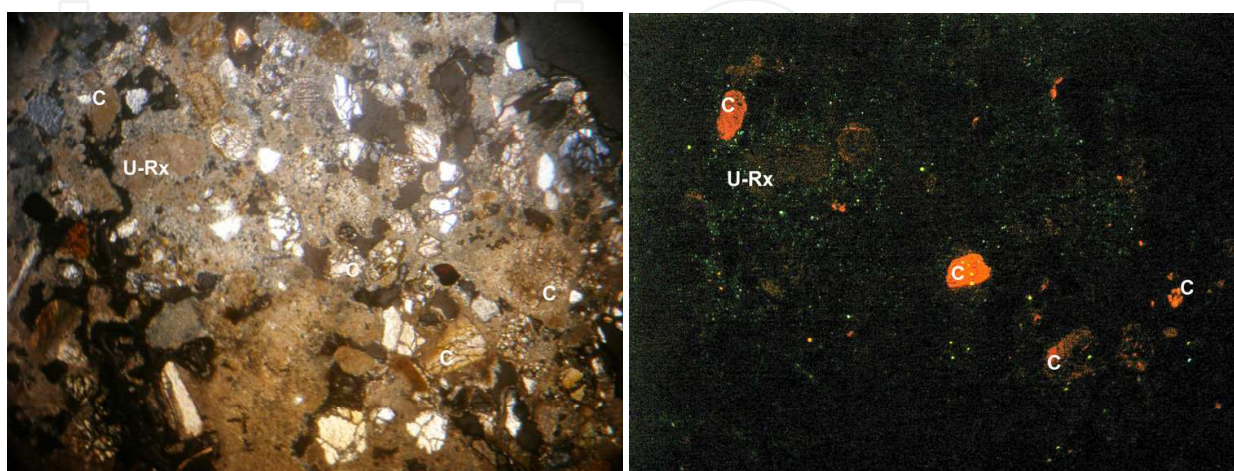


Fig. 2. Photomicrographs of historic lime-mortars. A. Unburned limestone (U-Rx) remains and sparite limestone detrital grains (C). B. Cathodoluminescence image.

The binder phase is typically a spongy network of microscopic crystal of calcite enclosing the aggregate particles as reveals the SEM study. During mortar cementation, the expelled water generates porosity and at the same time transports dissolved atmospheric CO_2 to crystallize CaCO_3 . In cathodoluminescence, the binder is usually dark brown or nearly black (Fig. 2B) revealing a rapid hardening process in contact with atmospheric oxygen. This very oxidizing conditions leads to the precipitation of both Mn and Fe as oxides and hydroxides, and therefore preclude the diffusion of activator elements in the calcite lattice.

Grains with well-developed bright yellowish to red luminescence reveal the occurrence of carbonates with diagenetic modification and correspond to fragments of different inherited carbonate types included in the aggregates. The dully-luminescent grains correspond to residues of unburned limestone (Fig. 2).

3. Extraction procedure

The protocol established to obtain pure datable binder is based on a modification of the procedure described by Sonninen and Jungner (2001) and largely used in the radiocarbon dating of mortar (Nawrocka et al., 2005; Lindroos et al., 2007; Nawrocka et al., 2007; Goslar et al., 2009; Nawrocka et al., 2009; Heinemeier et al., 2010). The mortar samples were gently crumbled up manually or with a mortar and, based on the assumption that binder carbonates are characterized by an easily breakable aggregation structure, they were disaggregated by means of an ultrasonic bath.

This method is based on the fact that particle size is related to mechanical or chemical origin. Particles of mechanical origin always have a grain size of over $1\text{ }\mu\text{m}$, whereas chemical reactions produce colloids that flocculate and regrow, generating finer particles. This process has been demonstrated for subaerial media (Wilson & Spengler, 1996) and for aqueous media (Davis & Kent, 1990; Salama & Ian, 2000). Therefore, this work has optimized a procedure to obtain particles of under 300 nm , which ensures that all the carbonate separated has been generated by slaked lime carbonation, and consequently that the carbon measured corresponds to atmospheric carbon.

The methodology is a variation on the particle-fractionation techniques routinely used in soil mineralogy studies. Sedimentation and centrifugation allow the routine separation of particles of $< 2\text{ }\mu\text{m}$ (Laird & Dowdy, 1994; Soukup et al., 2008). Particle fractionation is based on the differential settling of the particles in a liquid so that centrifugation increases the rate of sedimentation, accelerating the process. The relation between the sedimentation rate and particle size is given in Stoke's Law (Stokes, 1851):

$$V = g(s_p - s_l)D^2/1.8h$$

where V is the particle velocity (cm/s) in the liquid of density (s_l); g is gravity acceleration (9.8 cm/s^2); s_p is the particle density (g/cm^3); D is the equivalent spherical diameter of the particle (cm); and h is the viscosity of the liquid (Pa.s).

The main goal of this separation procedure is to avoid (or minimize) the aggregation of small particles and to fractionate particles of under $1\text{ }\mu\text{m}$. To explain this extraction method, the procedure has been designed in different particle-fractionation steps. (i) The manually crumbled mortar is placed in an ultrasonic bath of ultrapure water for 10 minutes to promote further crumbling. Afterwards, the suspended fraction is extracted. (ii) This

fraction is purified through centrifugation at 3000 rpm for 10 minutes using a Kubota 3000 centrifuge (Kubota Corporation, Tokyo, Japan). (iii) Then, the topmost 50 ml by volume is collected, corresponding to the under $20\text{ }\mu\text{m}$ fraction. In order to assess the particle size obtained, a Mastersizer 2000 particle analyser (Malvern Instruments Ltd, Malvern, UK) was used to measure grain size. Figure 3A gives a particle-distribution histogram with two modes, one for fine particle size ($0.2\text{ }\mu\text{m}$) and the other for coarse ($\approx 1.5\text{ }\mu\text{m}$), with a tail reaching $20\text{ }\mu\text{m}$. (iv) In order to improve the grain-size separation of this $< 20\text{ }\mu\text{m}$ fraction, it is resuspended in an aqueous medium at a $\text{pH} \approx 8$ and then placed in the ultrasonic bath to promote crumbling. The $\text{pH} \approx 8$ aqueous medium favours optimal scattering of small crystals (Warkentin & Maeda, 1980). This suspension is centrifuged for one minute at 1000 rpm, after which the topmost 15 ml are collected, which corresponds to a grain-size fraction of less than $1\text{ }\mu\text{m}$ and a mode of 200 nm (Fig. 3B and Fig. 5). The XRD tests are performed to ensure that the extraction method was effective for lime-binder refining. The final fractions thus obtained were composed only by calcite (Fig. 4A) whereas previous fractions from the step (iii) content some residual aggregates of clay minerals and quartz nature (Fig. 4B). This procedure is repeated as necessary to obtain a sufficient amount for AMS analysis. In this study, this process had to be repeated five to eight times to obtain 40 to 80 mg.

This method separates the carbonate binder particles (formed through the reaction of the lime with atmospheric carbon) from the detrital and/or fragmented particles corresponding to aggregates and unburned limestone. Therefore, this extraction procedure eliminates any supply of dead or non-atmospheric carbon. The separation of the carbonate binder has been confirmed by SEM microscopy observations. The figure 5A shows planar carbonate grains of the binder with a grain size of approximately $0.2\text{ }\mu\text{m}$ in the useful fraction after step (iv). The coarse fraction discarded can be observed in figure 5B. This fraction commonly contains particles with a grain size of over $1\text{ }\mu\text{m}$ and habits suggesting an inherited origin of the carbonate.

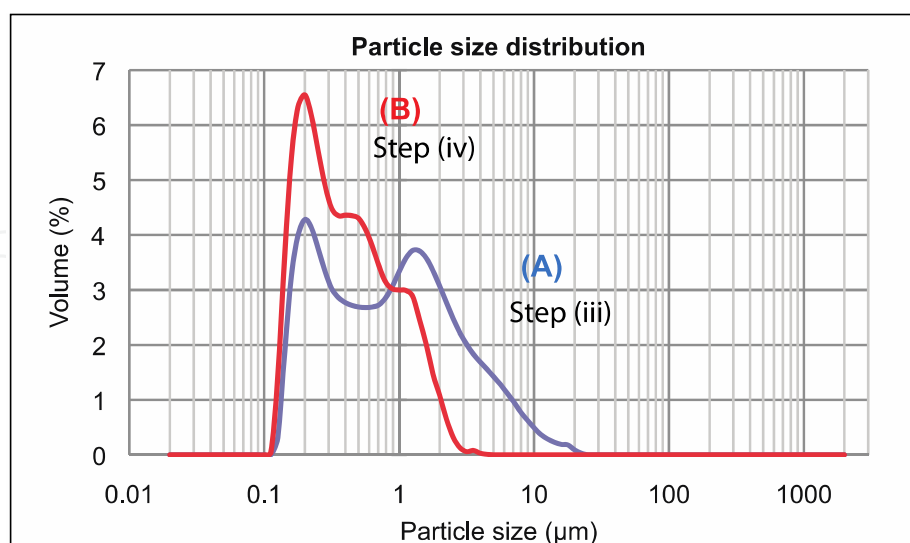


Fig. 3. Grain-size histograms of particles extracted from roman mortar (sample SNR-579). **A.** The distribution after extraction step (iii) exhibits bimodality with a large number of particles in a mode at small sizes ($0.2\text{ }\mu\text{m}$) and coarse size mode ($\approx 1.5\text{ }\mu\text{m}$) and with a tail reaching to $20\text{ }\mu\text{m}$. **B.** The distribution after extraction step (iv) shows a mode at $0.2\text{ }\mu\text{m}$ and to shoulder at $0.5\text{ }\mu\text{m}$ and $1\text{ }\mu\text{m}$ with a little tail reaching to $4\text{ }\mu\text{m}$.

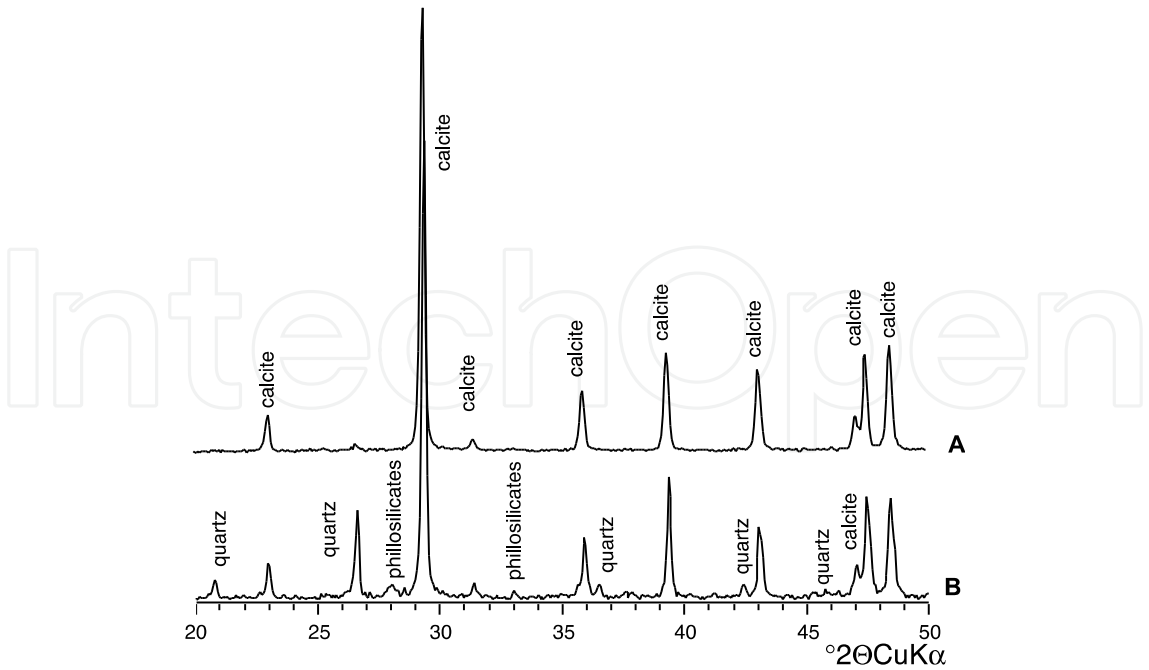


Fig. 4. XRD patterns of binder mortar. A. After extraction step (iv). B. The “coarse fraction” after extraction steep (iii).

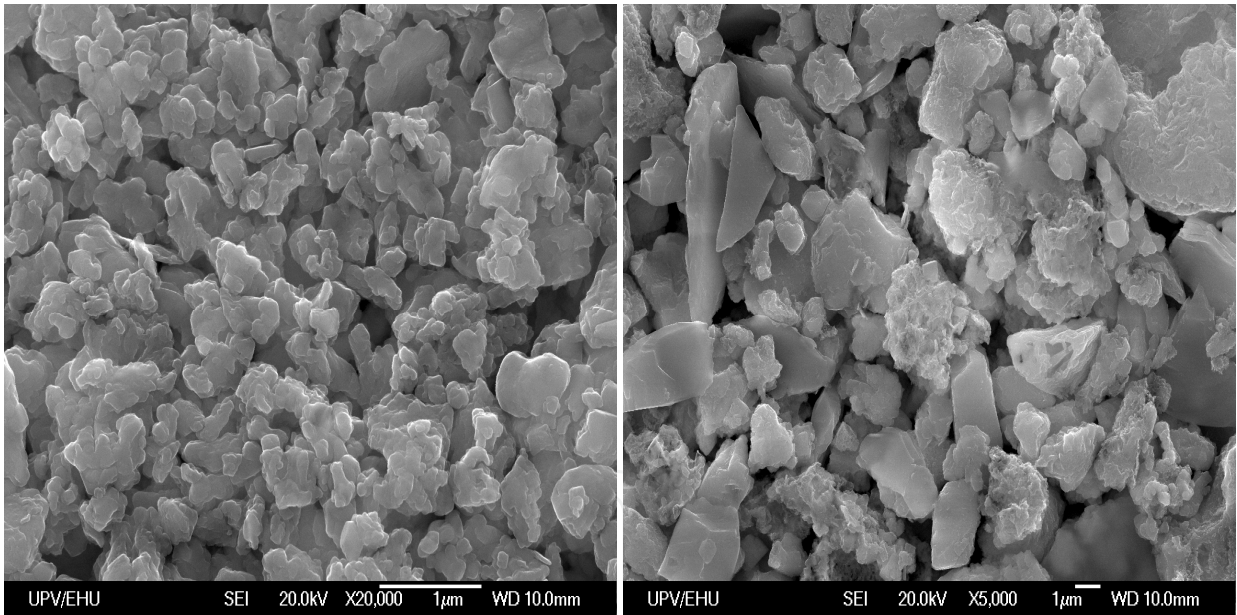


Fig. 5. SEM photomicrographs of extracted carbonate from SNR-108 mortar sample. A. Fine fraction with average particle size ca 0.2 nm. B. Larger fraction with detrital or mechanically fragmented inherited carbonates.

Moreover, thermogravimetric analysis and differential thermal analysis (DT-TGA) has been carried out to obtain a complementary knowledge about the binder composition and purity. The figure 6 illustrates representative thermograms obtained for studied samples. The thermograms of all samples are typical of aerial lime mortars of carbonate nature with a typical weight loss at temperatures ranging from 600 to 750 °C (Bakolas et al., 1998; Marques et al., 2006; Adriano et al., 2009).

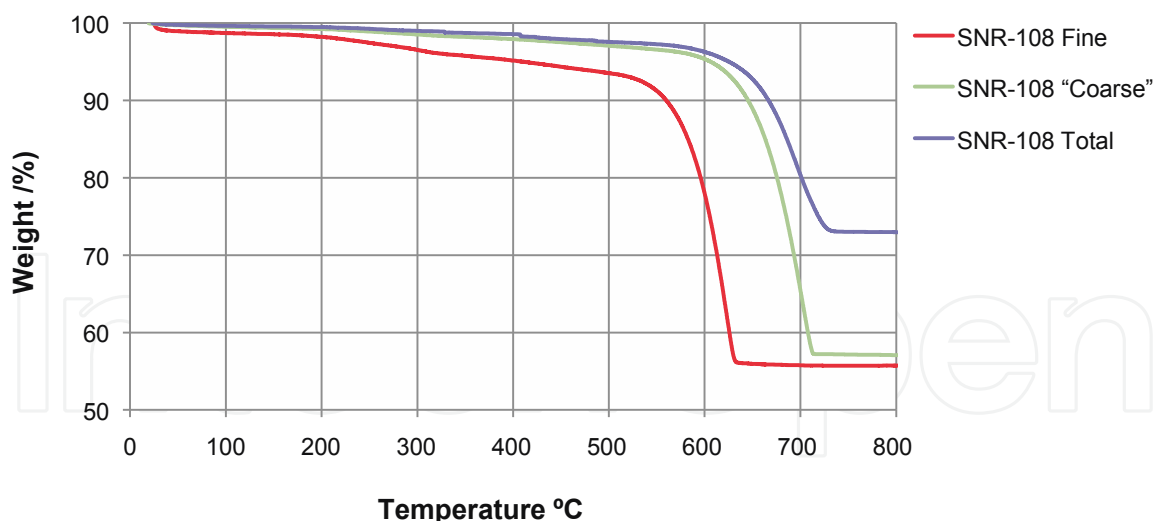


Fig. 6. Thermal analysis curves of mortar and different binder fractions of SNR-108 sample.

The finer grain size fraction corresponding to pure binder reacts at lower temperatures than the coarse size fraction and bulk mortar, showing the shifting of weight loss temperature from ca 700 °C to 600 °C as purity increases and grain size decreases. The continuous weight loss observed between 200°C and 550 °C in the lime fine fraction could be attributed to $\text{Ca}(\text{OH})_2$ dehydration (Paama et al., 1998).

The shifting of temperatures reveals that this fine fraction corresponds to the most reactive fractions of the sequential solutions performed by other researchers (Sonninen & Jungner, 2001; Lindroos et al., 2007; Nawrocka et al., 2009; Heinemeier et al., 2010). The main advantage of this extraction method consists in the removal of any inherited carbonate contamination.

To test the effectiveness of the developed extraction method, five mortar samples were selected for radiometric dating corresponding to different periods ranging from Roman (1st to 4th centuries AD) to Medieval (9th to 14th centuries).

4. Results and discussion

Santa Maria la Real is located within and surrounding the parish church of the Zarautz town (northern Spain). The town is located on the Gulf of Biscay, in front of a sandy beach two kilometres long. Excavations of the interior of the church of Santa Maria la Real have identified successive periods of occupation since the Iron Age (Ibáñez Etxeberria, 2003; Ibáñez Etxeberria & Moraza, 2005; Ibáñez Etxeberria, 2009) (Fig. 7). Remains from the Iron Age and a long-term stable Roman establishment (between the 1st to 5th centuries AD) were located in the room structure uncovered. Within the Roman zone, several room units have been discovered. A new reoccupation of the space by different human groups took place starting in the late 9th century or early 10th century.

Radiocarbon dating of the lime mortars has revealed the age of various construction phases at the temple of Santa Maria la Real (Table 1). The earliest age determined ranges between 90 - 210 AD (with a 95.4% probability) and corresponds to construction phases at the end of the 1st or 2nd centuries of the present era (Fig. 9). This age is in agreement with the relative

timeline indicated by the abundance of common Early Empire Roman pottery and with the remains of Hispanic terra sigillata pottery found at the site (Ceberio, 2009; Cepeda Ocampo, 2009; Esteban Delgado et al., in press). The oldest remains of Hispanic terra sigillata pottery correspond to pottery produced at *Tritium magallum* from 40 AD to 60 AD, equivalent to the earliest age of foundations for the Roman structures. In fact, the fill of a foundation trench for the main structure preserved from the Roman period contained fragments of Hispanic terra sigillata pottery (Cepeda Ocampo, 2009) and of common hand-made pottery (Ceberio, 2009), as well as a carbon fragment in the mortar. This carbon fragment was dated by ^{14}C at 1930 ± 40 (Ua-20919), corresponding to a calibrated age of 40 BC to 140 AD with a 95.4% probability (Ibañez Etxeberria & Sarasola Etxegoien, 2009). These ages are perfectly consistent since in ^{14}C dating calibration, one has to take into account the problem of old wood (Bowman, 1990). Wood or carbon fragments in a mortar are always older than the mortar itself. The difference can be significant if the carbon analysed derives from the internal part of the tree trunk used as fuel to produce the mortar, or even more so if the wood comes from trees cut long before.

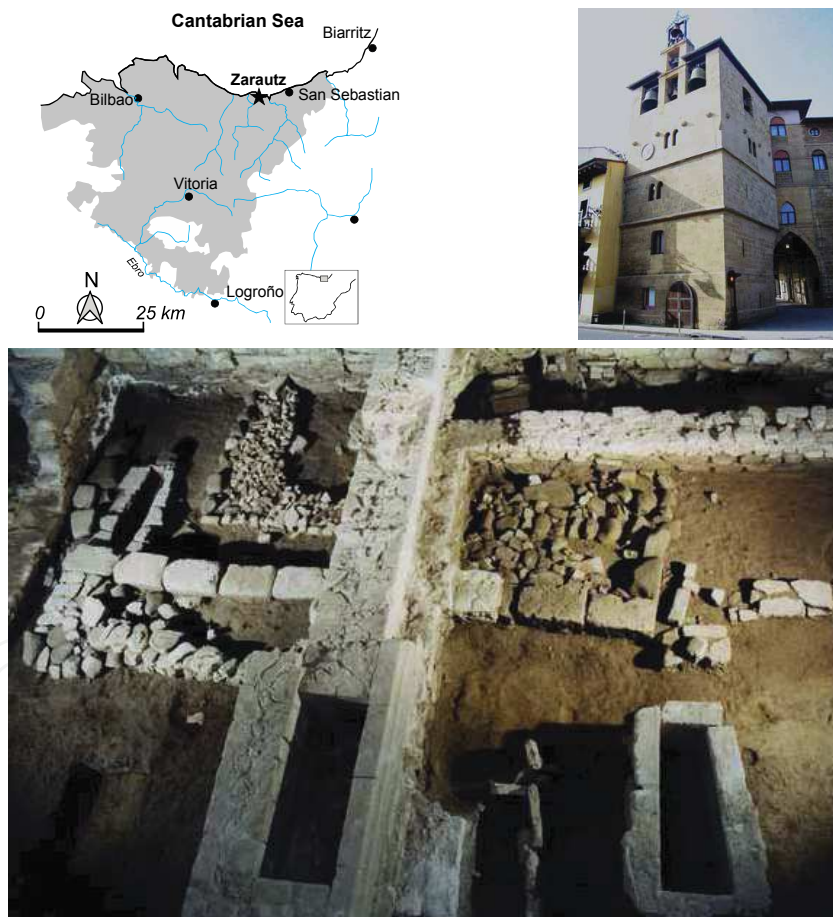


Fig. 7. Geographical location of the church of Santa Maria la Real and one temple view.

The evolution of the site is attested through the layout of four religious temples and an associated necropolis (Fig. 8). Overall, this confirms the foundation and the uninterrupted development of the present-day community of Zarautz from the early and late Medieval periods until the existence of the present temple.

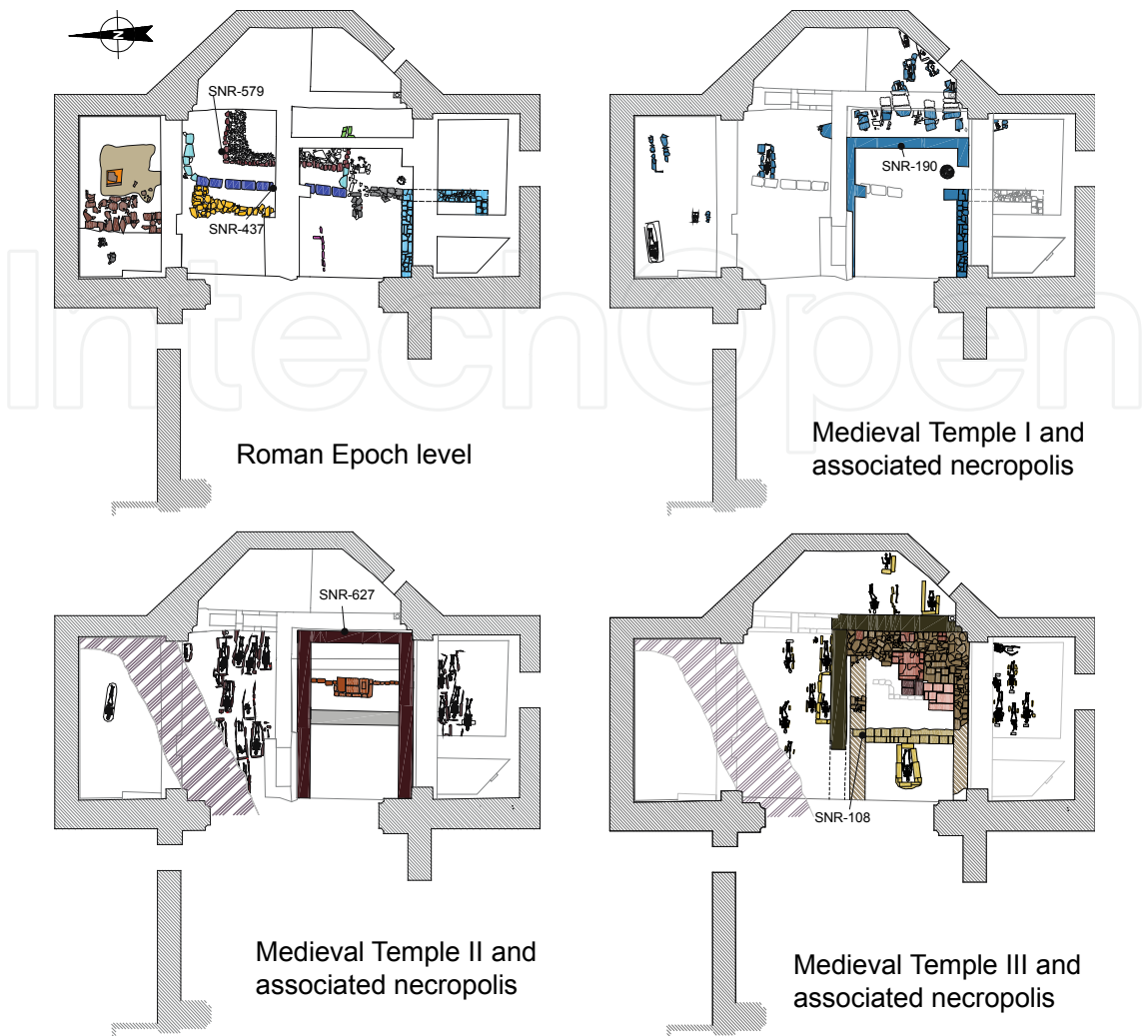


Fig. 8. Scheme of the studied temples and the location of mortar samples.

Lab Code	Sample	Conventional Age	δ ¹³ C	Calibrated Age		Archaeological Age
				68.20%	95.40%	
Beta-300900	SNR-579	1860 +/- 30 BP	-9.4 ‰	90 - 214 AD	80 - 231 AD	Roman
Beta-300899	SNR-437	1870 +/- 30 BP	-10.5 ‰	92 - 210 AD	73 - 227 AD	Roman
Beta-300898	SNR-190	1220 +/- 30 BP	-17.3 ‰	729 - 870 AD	692 - 888 AD	Temple I
Beta-300901	SNR-627	1100 +/- 30 BP	-17.4 ‰	897 - 985 AD	887 - 1014 AD	Temple II
Beta-300897	SNR-108	1060 +/- 30 BP	-11.8 ‰	905 - 1019 AD	896 (16.2%) 920 AD 950 (79.2%) 1024 AD	Temple III

Table 1. AMS ¹⁴C dates for mortar samples of Santa Maria la Real obtained with OxCal v 4.1 (Bronk Ramsey, 2009) and IntCal09 atmospheric data (Reimer et al., 2009).

This date belongs to the earliest years of Roman occupation on the northern coast of Spain, related with the creation of coastal sites for maritime trade, which took place especially starting in the second half of the 1st century AD (Fernández Ochoa & Morillo Cerdán, 1994; Esteban Delgado, 2004). In contrast, despite the persistence of this settlement for various centuries during the Roman period, as shown by the finding of Late Empire coins and

common pottery (3rd–5th centuries) (Cepeda Ocampo, 2009; Esteban Delgado et al., in press), no significant later structures have been dated. The main reason is that, at this site, the later buildings documented are of poorer construction, with walls mortared with mud (Ibañez Etxeberria, 2009).

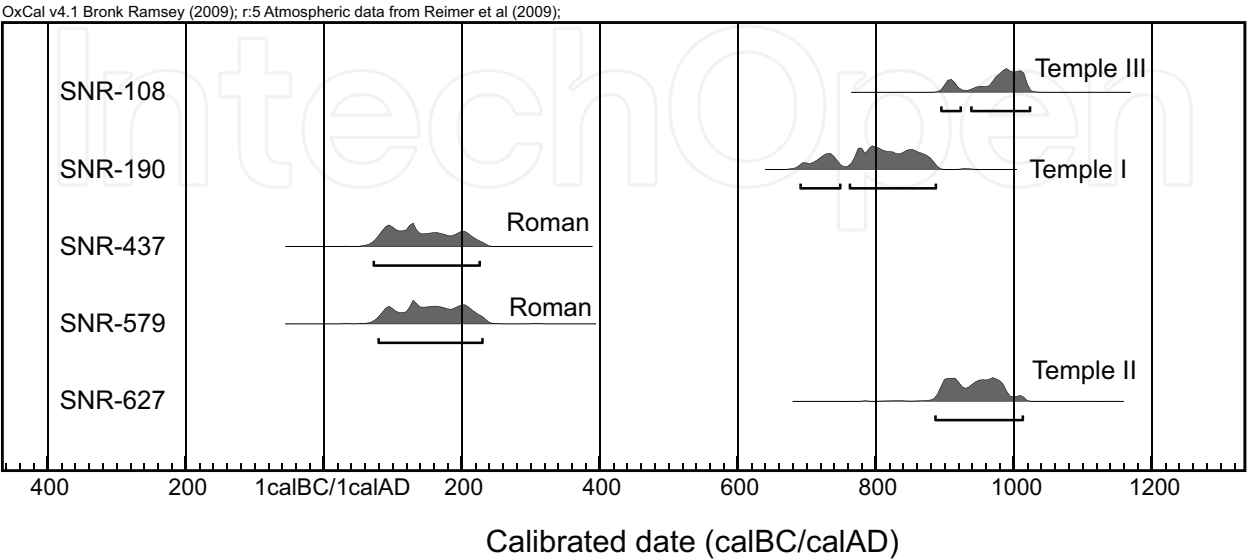


Fig. 9. Calibration of ¹⁴C dates of the Santa Maria la Real mortar samples, obtained with OxCal v 4.1 (Bronk Ramsey, 2009) and IntCal09 atmospheric data (Reimer et al., 2009).

For the Medieval period, the dates obtained correspond to the construction of the perimeter walls for various buildings of the parish church. These buildings are built one atop the other on the same religious site (Fig. 8) due to greater need for space as a result of the population growth of Zarautz in the Early Medieval period. The oldest age, consistent with the archaeological findings, is provided by the mortar in wall SNR-190 (Temple I), with a probable age of 772 AD to 870 AD (68.2% confidence interval) (Fig. 9). This dating is close to that established by archaeological analyses for an arch of the Temple I, and therefore is not likely a spurious aged dating. Slightly older ages were obtained in skeletons from burials associated with Temple I. Thus, skeleton sample Ua-16897 provides an imprecise age of 558 AD to 870 AD (95% confidence interval), and probably prior to 770 AD (68.2%) (Ibañez Etxeberria & Sarasola Etxegoien, 2009).

The other two ages belong to the perimeter walls of Temples II and III. The age for Temple II must be prior to 985 AD (68.2%), whereas Temple III provides an age of 970 AD to 1020 AD (95%). These two construction phases give ages very close to each other, which is consistent with the population surge at the end of the turn of the millennium and the subsequent need for a larger temple.

The ages determined are coherent not only with the archaeological information, but also with previous radiometric dating (Fig. 10). The age for Temple II is very close to those determined for the burials in stone-slab graves in the necropolis, with a dating of 890 AD to 1040 AD (68% confidence interval), whereas individuals associated with the Temple III necropolis, with walled graves, give ages of 990 AD to 1160 AD (Ibañez Etxeberria, 2003).

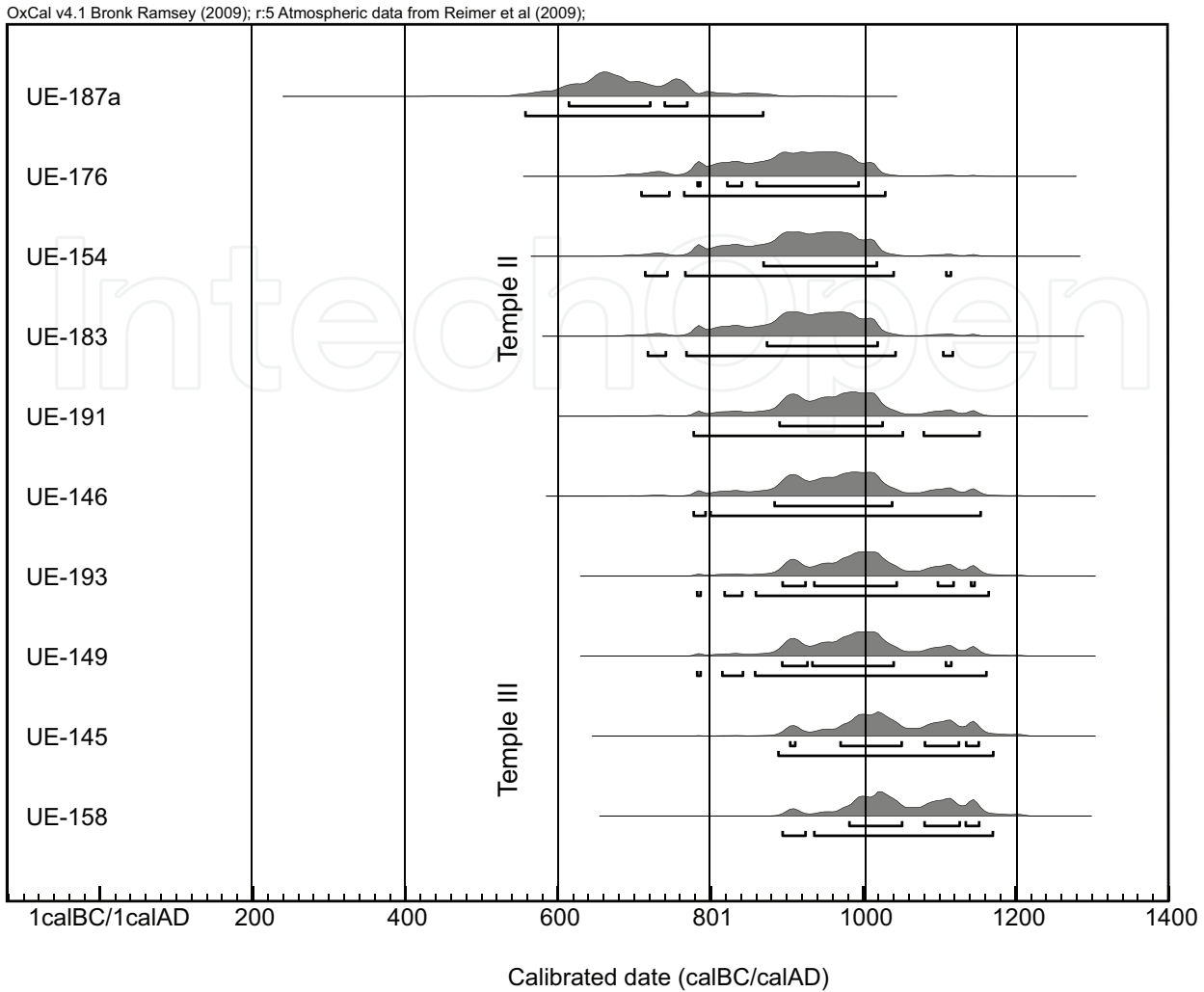


Fig. 10. Calibration of ¹⁴C dates of individuals from the necropolis associated to the Santa María la Real, obtained with OxCal v 4.1 (Bronk Ramsey, 2009) and IntCal09 atmospheric data (Reimer et al., 2009).

5. Conclusions

Lime mortar radiocarbon dating will result ambiguous because of CO₂ contamination from inherited carbonates and, burial and/or weathering modifications. Therefore, an effective extraction method of binder is necessary in order to prevent the determination of *older* or *younger* ages.

A new combined mechanical and physical procedure was established to obtain very pure binder fraction. The extraction of particles of less than 1 μm in size was developed allowing to achieve suitable material for lime mortar dating. This extraction method eliminates the sources of contamination in carbon, fundamental issue for radiometric dating of lime mortars. Thus, this procedure removes partial acid digestion from dating procedure of binder and several radiocarbon measurements of complex interpretation. The obtained pure binder after separation procedure is enough in quantity and quality for radiocarbon dating. The adequate binder carbonate selection has a broad application on establishing the chronology of the different construction phases of buildings.

For the selection of a suitable sample for radiocarbon dating, petrographic analysis is essential. The identification of different mineralogical phases of mortar samples, aggregate nature, and the limestone fragment remains as well as the recognition of possible features of mortar degradation (organic and inorganic) are issues to elucidate. Moreover, analysis performed by Scanning Electron Microscopy allows to identify contaminant error sources of the mortar sample on a small scale.

The effectiveness of mechanical separation and the verification of binder purity have been proved by X-ray diffraction, Scanning Electron Microscope analyses and thermogravimetric analysis and differential thermal analysis.

The preparation method was successfully applied to distinctive physical characteristic bearing and varying age five mortars. Mortars correspond to perimeter walls of different age buildings of the Santa María la Real church in Zarautz. Moreover, the elimination of the source of error in inherited carbon provides ages that are relatively insensitive to aging when determining the dates of these historic buildings and of their construction phases.

The radiometric ages of studied mortars are consistent with the established by archaeological and historical studies for different construction phases of the studied church. Therefore, the procedure of sample preparation considerably simplifies the performance of radiometric measurements and their interpretation.

6. Acknowledgments

This paper has received financial support from the project IT-315-10 of the Basque Government and UNESCO 09/01 and EHU10/32 projects of The University of the Basque Country. We thank Christine Laurin, who has greatly improved the English text.

7. References

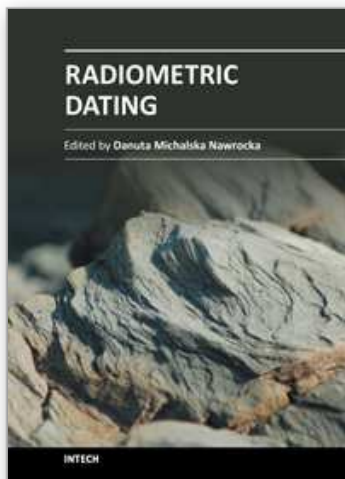
- Adriano, P., Silva, A. S., Veiga, R., Mirao, J. & Candeias, A. E. (2009). *Microscopic characterisation of old mortars from the Santa Maria Church in Evora*, Materials Characterization, Vol. 60, No. 7, pp. 610-620, ISSN 1044-5803
- Al-Bashaireh, K. & Hodgins, G. W. L. (2011). *AMS 14C dating of organic inclusions of plaster and mortar from different structures at Petra-Jordan*, Journal of Archaeological Science, Vol. 38, No. 3, pp. 485-491, ISSN 0305-4403
- Ambers, J. (1987). *Stable carbon isotope ratios and their relevance to the determination of accurate radiocarbon-dates for lime mortars*, Journal of Archaeological Science, Vol. 14, No. 6, pp. 569-576, ISSN 0305-4403
- Bakolas, A., Biscontin, G., Moropoulou, A. & Zendri, E. (1998). *Characterization of structural byzantine mortars by thermogravimetric analysis*, Thermochimica Acta, Vol. 321, No. 1-2, pp. 151-160, ISSN 0040-6031
- Ball, R. J., El-Turki, A. & Allen, G. C. (2011). *Influence of carbonation on the load dependent deformation of hydraulic lime mortars*, Materials Science and Engineering: A, Vol. 528, No. 7-8, pp. 3193-3199, ISSN 0921-5093
- Baxter, M. S. & Walton, A. (1970). *Radiocarbon dating of mortars*, Nature, Vol. 225, No. 5236, pp. 937-938, ISSN 0028-0836

- Benea, V., Vandenberghe, D., Timar, A., Van den Haute, P., Cosma, C., Gligor, M. & Florescu, C. (2007). *Luminescence dating of Neolithic ceramics from Lumea Noua, Romania*, *Geochronometria*, Vol. 28, pp. 9–16, ISSN 1733-8387
- Berger, R. (1992). *C-14 dating mortar in Ireland*, *Radiocarbon*, Vol. 34, No. 3, pp. 880-889, ISSN 0033-8222
- Bowman, S., (1990). *Radiocarbon dating*, University of California Press ISBN 0520070372, Berkeley
- Bronk Ramsey, C. (2009). *Bayesian analysis of radiocarbon dates*, *Radiocarbon*, Vol. 51, No. 1, pp. 337-360, ISSN 0033-8222
- Casadio, F., Chiari, G. & Simon, S. (2005). *Evaluation of binder/aggregate ratios in archaeological lime mortars with carbonate aggregate: A comparative assessment of chemical, mechanical and microscopic approaches*, *Archaeometry*, Vol. 47, pp. 671-689, ISSN 0003-813X
- Ceberio, M., (2009). La cerámica común no torneada de época romana del yacimiento de Santa María la Real de Zarautz (País Vasco). Una aproximación a su caracterización tipológica, in *Santa María La Real de Zarautz (País Vasco) continuidad y discontinuidad en la ocupación de la costa vasca entre los siglos V a. C. y XIV d. C.*, Ibáñez Etxeberria, Á. (Ed.), pp. 176-190, Sociedad de Ciencias Aranzadi ISBN 978-84-931930-9-6, Donostia
- Cepeda Ocampo, J. J., (2009). Hallazgos romanos en Santa María la Real de Zarautz (País Vasco). La terra sigilata, las lucernas y monedas, in *Santa María La Real de Zarautz (País Vasco) continuidad y discontinuidad en la ocupación de la costa vasca entre los siglos V a. C. y XIV d. C.*, Ibáñez Etxeberria, Á. (Ed.), pp. 258-272, Sociedad de Ciencias Aranzadi ISBN 978-84-931930-9-6, Donostia
- Cimitan, L., P., R. & Zaninetti, A. (1991). *Studio delle tecniche di disaggregazione per le indagini diagnostiche delle malte. Materiali e Strutture, Problemi di Conservazione*, Vol. 3, pp. 121-130, ISSN 1121-2373
- Corazza, M., Pratesi, G., Cipriani, C., Lo Guidice, A., Rossi, P., Vittone, E., Manfredotti, C., Pecchioni, E., Manganeli del Fa, C. & Fratini, F. (2001). *Ionoluminescence and cathodoluminescence in marbles of historic and architectural interest*, *Archaeometry*, Vol. 43, pp. 439-446, ISSN 0003-813X
- Davis, J. A. & Kent, D. B., (1990). Surface complexation modeling in aqueous geochemistry, in *Mineral-Water Interface Geochemistry*, Hochella, M.F. & White, A.F. (Eds.), pp. 177-260, Mineralogical Society of America ISBN 0-939950-28-6,
- Esteban Delgado, M. (2004). *Tendencia en la creación de asentamientos durante los primeros siglos de la era en el espacio litoral guipuzcuano*, *Kobie*, Vol. 6, No. 1, pp. 371-380, ISSN
- Esteban Delgado, M., Martínez Salcedo, A., Ortega Cuesta, L. A., Alonso-Olazabal, A., Izquierdo Marculeta, M. T., Rechin, F. & Zuluaga Ibargallartu, M. C., (in press). *Caracterización tecnológica y arqueológica de la cerámica común no torneada de época romana en el País Vasco peninsular y Aquitania meridional: Producción, difusión, funcionalidad, cronología*, *Eusko Ikaskuntza*, Donostia
- Fernández Ochoa, C. & Morillo Cerdán, Á., (1994). *De Brigantium a Oiasso : una aproximación al estudio de los enclaves marítimos cantábricos en época romana*, *Foro Arqueología Proyectos y Publicaciones*, ISBN 8460501051, Madrid
- Folk, R. L. & Valastro, S. J. (1976). *Successful technique for dating of lime mortar by carbon-14*, *Journal of Field Archaeology*, Vol. 3, pp. 203–208., ISSN 0093-4690
- Frumkin, A., Shimron, A. & Rosenbaum, J. (2003). *Radiometric dating of the Siloam Tunnel, Jerusalem*, *Nature*, Vol. 425, No. 6954, pp. 169-171, ISSN 0028-0836
- Goedicke, C. (2003). *Dating historical calcite mortar by blue OSL: results from known age samples*, *Radiation Measurements*, Vol. 37, No. 4-5, pp. 409-415, ISSN 1350-4487

- Goslar, T., Nawrocka, D. & Czernik, J. (2009). *Foraminiferous limestone in C-14 dating of mortar*, Radiocarbon, Vol. 51, No. 3, pp. 987-993, ISSN 0033-8222
- Habermann, D., Neuser, R. & Richter, K., (2000). Quantitative high resolution spectral analysis of Mn²⁺ in sedimentary calcite, in *Cathodoluminescence in geosciences*, Pagel, M. (Ed.), pp. 331-358, Springer ISBN Berlin
- Hale, J., Heinemeier, J., Lancaster, L., Lindroos, A. & Ringbom, Å. (2003). *Dating ancient mortar*, American Scientist, Vol. 91, pp. 130-137, ISSN 0003-0996
- Heinemeier, J., Jungner, H., Lindroos, A., Ringbom, s., von Konow, T. & Rud, N. (1997a). *AMS 14C dating of lime mortar*, Nuclear Instruments and Methods in Physics Research Section B: Beam Interactions with Materials and Atoms, Vol. 123, No. 1-4, pp. 487, ISSN 0168-583X
- Heinemeier, J., Jungner, H., Lindroos, A., Ringbom, s., von Konow, T., Rud, N. & Sveinbjornsdottir, A., (1997b). *AMS C-14 dating of lime mortar*, in *Proceedings of the VII Nordic Conference on the Application of Scientific Methods in Archaeology*, Edgren, T. (Ed.), pp. 214-215, ISBN 951-9057-27-7,
- Heinemeier, J., Ringbom, A., Lindroos, A. & Sveinbjornsdottir, A. E. (2010). *Successful AMS C-14 dating of non-hydraulic lime mortars from the medieval churches of the Åland Islands, Finland*, Radiocarbon, Vol. 52, No. 1, pp. 171-204, ISSN 0033-8222
- Hiekkanen, M., (1998). Finland's medieval stone churches and their dating - a topical problem., Helsinki, Suomen Museo, p. 143-149.
- Ibañez Etxeberria, A., (2009). *Santa María la Real de Zarautz (País Vasco): continuidad y discontinuidad en la ocupación de la costa vasca entre los siglos V a.C. y XIV d.C*, Sociedad de Ciencias Aranzadi ISBN 978-84-931930-9-6, Donostia
- Ibañez Etxeberria, A. & Sarasola Etxegoien, N., (2009). El yacimiento arqueológico de Santa María de Zarautz (País Vasco), in *Santa María la Real de Zarautz (País Vasco): continuidad y discontinuidad en la ocupación de la costa vasca entre los siglos V a.C. y XIV d.C*, Ibañez Etxeberria, Á. (Ed.), pp. 12-84, Sociedad de Ciencias Aranzadi ISBN 978-84-931930-9-6, Donostia
- Ibañez Etxeberria, A., (2003). *Entre Menosca e Ipuscua: arqueología y territorio en el yacimiento de Santa María La Real de Zarautz (Gipuzkoa)*, Zarauzko Arte eta Historia Museoa, ISBN 8492303344, Zarautz
- Ibañez Etxeberria, A. & Moraza, A. (2005). *Evolución cronotipológica de las inhumaciones medievales en el Cantábrico Oriental: el caso de Santa María la Real de Zarautz (Gipuzkoa)*, Munibe, Suplemento, Vol. 57, pp. 419-437, ISSN 1132-2217
- Kosednar-Legenstein, B., Dietzel, M., Leis, A. & Stingl, K. (2008). *Stable carbon and oxygen isotope investigation in historical lime mortar and plaster Results from field and experimental study*, Applied Geochemistry, Vol. 23, No. 8, pp. 2425, ISSN
- Labeyrie, J. & Delibrias, G. (1964). *Dating of old mortar by Carbon-14 method*, Nature, Vol. 201, No. 492, pp. 742-743, ISSN 0028-0836
- Laird, D. A. & Dowdy, R. H., (1994). Preconcentration techniques in soil mineralogical analyses, in *Quantitative Methods in Soil Mineralogy*, Luxmoore, R.J. (Ed.), pp. 236-266, Soil Science Society of America ISBN 0-89118-806-1, Madison,WI
- Lanas, J., Sirera, R. & Alvarez, J. I. (2005). *Compositional changes in lime-based mortars exposed to different environments*, Thermochimica Acta, Vol. 429, No. 2, pp. 219-226, ISSN 0040-6031
- Lindroos, A., Heinemeier, J., Ringbom, Å., Braskén, M. & Sveinbjörnsdóttir, Á. (2007). *Mortar dating using AMS 14C and sequential dissolution: examples from medieval, non-hydraulic lime mortars from the Åland Islands, SW Finland*, Radiocarbon, Vol. 49, No. 1, pp. 47-67, ISSN 0033-8222

- Machel, H. G., (2000). *Application of cathodoluminescence to carbonate diagenesis*, ISBN 3-540-65987-0,
- Marques, S. F., Ribeiro, R. A., Silva, L. M., Ferreira, V. M. & Labrincha, J. A. (2006). *Study of rehabilitation mortars: Construction of a knowledge correlation matrix*, Cement and Concrete Research, Vol. 36, No. 10, pp. 1894-1902, ISSN 0008-8846
- Marshall, D. J., (1988). *Cathodoluminescence of geological materials*, Allen & Unwin, ISBN 0045520267 (alk. paper), Boston
- Marzaioli, F., Lubritto, C., Nonni, S., Passariello, I., Capano, M. & Terrasi, F. (2011). *Mortar Radiocarbon Dating: Preliminary Accuracy Evaluation of a Novel Methodology*, Analytical Chemistry, Vol. 83, No. 6, pp. 2038-2045, ISSN 0003-2700
- Nawrocka, D., Michniewicz, J., Pawlyta, J. & Pazdur, A. (2005). *Application of radiocarbon method for dating of lime mortars*, Geochronometria, Vol. 24, pp. 109-115, ISSN 1733-8387
- Nawrocka, D., Czernik, J. & Goslar, T. (2009). *C-14 dating of carbonate mortars from Polish and Israeli sites*, Radiocarbon, Vol. 51, No. 2, pp. 857-866, ISSN 0033-8222
- Nawrocka, D. M., Michczynska, D. J., Pazdur, A. & Czernik, J. (2007). *Radiocarbon chronology of the ancient settlement in the Golan Heights area, Israel*, Radiocarbon, Vol. 49, No. 2, pp. 625-637, ISSN 0033-8222
- Ortega, L. A., Zuluaga, M. C., Alonso-Olazabal, A., Insausti, M. & Ibañez, A. (2008). *Geochemical characterization of archaeological lime mortars: Provenance inputs*, Archaeometry, Vol. 50, pp. 387-408, ISSN 0003-813X
- Paama, L., Pitkanen, I., Ronkkomaki, H. & Peramaki, P. (1998). *Thermal and infrared spectroscopic characterization of historical mortars*, Thermochimica Acta, Vol. 320, No. 1-2, pp. 127-133, ISSN 0040-6031
- Pachiaudi, C., Marechal, J., Van Strydonck, M., Dupas, M. & Dauchotdehon, M. (1986). *Isotopic fractionation of carbon during CO₂ absorption by mortar*, Radiocarbon, Vol. 28, No. 2A, pp. 691-697, ISSN 0033-8222
- Pagel, M., (2000). *Cathodoluminescence in geosciences*, Springer, ISBN 3540659870, Berlin
- Rech, J. A., Fischer, A. A., Edwards, D. R. & Jull, A. J. T. (2003). *Direct dating of plaster and mortar using AMS radiocarbon: A pilot project from Khirbet Qana, Israel*, Antiquity, Vol. 77, No. 295, pp. 155-164, ISSN 0003-598X
- Rech, J. A. (2004). *New uses for old laboratory techniques*, Near Eastern Archaeology, Vol. 67, No. 4, pp. 212-219, ISSN 1094-2076
- Reimer, P. J., Baillie, M. G. L., Bard, E., Bayliss, A., Beck, J. W., Blackwell, P. G., Ramsey, C. B., Buck, C. E., Burr, G. S., Edwards, R. L., Friedrich, M., Grootes, P. M., Guilderson, T. P., Hajdas, I., Heaton, T. J., Hogg, A. G., Hughen, K. A., Kaiser, K. F., Kromer, B., McCormac, F. G., Manning, S. W., Reimer, R. W., Richards, D. A., Southon, J. R., Talamo, S., Turney, C. S. M., van der Plicht, J. & Weyhenmeyer, C. E. (2009). *IntCal09 and Marine09 radiocarbon age calibration curves, 0-50,000 years cal BP*, Radiocarbon, Vol. 51, No. 4, pp. 1111-1150, ISSN 0033-8222
- Salama, A. I. A. & Ian, D. W., (2000). *Mechanical techniques: particle size separation*, in *Encyclopedia of Separation Science* pp. 3277-3289, Academic Press ISBN 978-0-12-226770-3, Oxford
- Schmid, S. G. (2001). *The International Wadi Farasa Project IWF, preliminary report on the 1999 season*, The Annual of the Department of Antiquities of Jordan, Vol. 45, pp. 343-357, ISSN

- Sickels, L. B., (1981). Organics vs. synthetics: their use as additives in mortars: *Symposium on Mortars, Cements and Grouts Used in the Conservation of Historic Buildings*, pp. 25–53.
- Sonninen, E., Erametsa, P. & Jungner, H., (1989). Dating of mortar and bricks: an example from Finland: *Archaeometry: proceedings of the 25th international symposium* pp. 99–107.
- Sonninen, E. & Jungner, H. (2001). *An improvement in preparation of mortar for radiocarbon dating*, Radiocarbon, Vol. 43, No. 2A, pp. 271–273, ISSN 0033-8222
- Soukup, D. A., Buck, B. J. & Harris, W., (2008). Preparing soils for mineralogical analyses, in *Methods of Soil Analysis. Part 5 – Mineralogical Methods*, Ulery, A.L. & Drees, L.R. (Eds.), pp. 12–31, Soil Science Society of America, Inc ISBN 978-0-89118-846-9, Madison
- Stefanidou, M. & Papayianni, I. (2005). *The role of aggregates on the structure and properties of lime mortars*, Cement and Concrete Composites, Vol. 27, No. 9–10, pp. 914–919, ISSN 0958-9465
- Stokes, G. G. (1851). *On the effect of the lateral friction of fluids on the motion of pendulums*, Trans. Cambridge Phil. Soc., Vol. 9, pp. 8–108, ISSN
- Stuiver, M. & Smith, C. S., (1965). Radiocarbon dating of ancient mortar and plaster: *Proceedings of the 6th International 14C Conference*, pp. 338–343.
- Tubbs, L. E. & Kinder, T. N. (1990). *The use of AMS for the dating of lime mortars*, Nuclear Instruments and Methods in Physics Research Section B: Beam Interactions with Materials and Atoms, Vol. 52, No. 3–4, pp. 438, ISSN
- Van Strydonck, M., Dupas, M. & Dauchot-Dehon, M., (1983). Radiocarbon dating of old mortars: *14C and Archaeology, Proceedings*, pp. 337–343.
- Van Strydonck, M., Dupas, M., Dauchotdehon, M., Pachiaudi, C. & Marechal, J. (1986). *The influence of contaminating (fossil) carbonate and the variations of delta-C-13 in mortar dating*, Radiocarbon, Vol. 28, No. 2A, pp. 702–710, ISSN 0033-8222
- Van Strydonck, M. & Dupas, M., (1991). The classification and dating of lime mortars by chemical analysis and radiocarbon dating: a review, in *Second Deya International Conference of Prehistory : recent developments in western Mediterranean prehistory: archaeological techniques, technology, and theory*, Waldren, W.H., Ensenyat, J.A. & Kennard, R.C. (Eds.), pp. 5–43, Tempus Reparatum ISBN 0860547272, Oxford
- Van Strydonck, M. J. Y., Van der Borg, K., De Jong, A. F. M. & Keppens, E. (1992). *Radiocarbon dating of lime fractions and organic material from buildings*, Radiocarbon, Vol. 34, pp. 873–879, ISSN 0033-8222
- Warkentin, B. P. & Maeda, T., (1980). Physical and mechanical characteristics of andisols in *Soils with Variable Charge*, Theng, B.K.G. (Ed.), pp. 281–302, New Zealand Society of Soil Science ISBN Lower Hutt.
- Wilson, R. & Spengler, J. D., (1996). *Particles in our air : concentrations and health effects*, Harvard University Press, ISBN 0674240774, Cambridge, Mass
- Wintle, A. G. (2008). *Fifty years of luminescence dating**, Archaeometry, Vol. 50, No. 2, pp. 276–312, ISSN 1475-4754
- Wyrwa, A. M., Goslar, T. & Czernik, J. (2009). *AMS C-14 dating of romanesque rotunda and stone buildings of a medieval monastery in Lekno, Poland*, Radiocarbon, Vol. 51, No. 2, pp. 471–480, ISSN 0033-8222
- Zamba, I. C., Stamatakis, M. G., Cooper, F. A., Themelis, P. G. & Zambas, C. G. (2007). *Characterization of mortars used for the construction of Saithidai Heroon Podium (1st century AD) in ancient Messene, Peloponnesus, Greece*, Materials Characterization, Vol. 58, No. 11–12, pp. 1229–1239, ISSN 1044-5803



Radiometric Dating

Edited by Dr. Danuta Michalska Nawrocka

ISBN 978-953-51-0596-1

Hard cover, 126 pages

Publisher InTech

Published online 09, May, 2012

Published in print edition May, 2012

This book explores a diversity of topics related to radiometric dating, with particular emphasis on the method of radiocarbon dating and a cross-check of its results with luminescence measurements. Starting from the chapter on Methodology the book includes, among other topics, the description of the problem of preparation of samples for ^{14}C measurement, a wide application of the radiocarbon method and a comparison of results obtained by various methods, including the radiocarbon method, the method of OSL, TL and palynology. The issue of radiocarbon dating of mortars and plasters is thoroughly discussed in the book. Chapter Two, Applications, and Three, Luminescence and Radiocarbon Measurements, provide examples of the application of the radiocarbon method in the study of archaeological, geological sites, from the analysis of soils, loesses, to the study of organic deposits filling the depressions in the Morasko Meteorite Nature Reserve. A wide range of studies reveals the great potential of the radiocarbon method, and the presented papers reflect interdisciplinary research.

How to reference

In order to correctly reference this scholarly work, feel free to copy and paste the following:

Luis Angel Ortega, Maria Cruz Zuluaga, Ainhoa Alonso-Olazabal, Maite Insausti, Xabier Murelaga and Alex Ibañez (2012). Improved Sample Preparation Methodology on Lime Mortar for Reliable ^{14}C Dating, Radiometric Dating, Dr. Danuta Michalska Nawrocka (Ed.), ISBN: 978-953-51-0596-1, InTech, Available from: <http://www.intechopen.com/books/radiometric-dating/improved-sample-preparation-methodology-on-lime-mortar-for-reliable-14-c-dating>

INTeCH
open science | open minds

InTech Europe

University Campus STeP Ri
Slavka Krautzeka 83/A
51000 Rijeka, Croatia
Phone: +385 (51) 770 447
Fax: +385 (51) 686 166
www.intechopen.com

InTech China

Unit 405, Office Block, Hotel Equatorial Shanghai
No.65, Yan An Road (West), Shanghai, 200040, China
中国上海市延安西路65号上海国际贵都大饭店办公楼405单元
Phone: +86-21-62489820
Fax: +86-21-62489821

© 2012 The Author(s). Licensee IntechOpen. This is an open access article distributed under the terms of the [Creative Commons Attribution 3.0 License](#), which permits unrestricted use, distribution, and reproduction in any medium, provided the original work is properly cited.

IntechOpen

IntechOpen