

We are IntechOpen, the world's leading publisher of Open Access books Built by scientists, for scientists

6,900

Open access books available

185,000

International authors and editors

200M

Downloads

Our authors are among the

154

Countries delivered to

TOP 1%

most cited scientists

12.2%

Contributors from top 500 universities



WEB OF SCIENCE™

Selection of our books indexed in the Book Citation Index
in Web of Science™ Core Collection (BKCI)

Interested in publishing with us?
Contact book.department@intechopen.com

Numbers displayed above are based on latest data collected.
For more information visit www.intechopen.com



The Deterministic and Stochastic Risk Assessment Techniques in the Work Sites: A FTA-TRF Case Study

P.K. Marhavidas and D.E. Koulouriotis
Democritus University of Thrace, Xanthi,
Greece

1. Introduction

Occupational accidents have a major impact upon human integrity and they also create high costs for the social welfare system in a country. Furthermore, risk analysis is an essential process for the safety policy of a company, having as main aim the effacement of any potential of damage. The diversity in risk analysis approaches is such that there are many appropriate techniques for most circumstances and the choice has become more a matter of taste (Reniers *et al.*, 2005b). The risk assessment is an essential and systematic process for assessing the impact, occurrence and the consequences of human activities on systems with hazardous characteristics (Van Duijne *et al.*, 2008) and constitutes a needful tool for the safety policy of a company. We can consider risk as a quantity, which can be measured and expressed by a mathematical relation, under the help of real accidents' data. The risk assessment is generally achieved by a deterministic and/or a stochastic method. The first one is classified into three main categories; 1) the qualitative, 2) the quantitative, and 3) the hybrid techniques (qualitative-quantitative), while the second one includes the classic statistical approach and the accident forecasting modelling (Marhavidas, 2009a, 2009b; Marhavidas and Koulouriotis, 2007, 2008, 2011, 2012; Marhavidas *et al.*, 2011a, 2011b).

On the other side, few comparative studies have been performed on different stochastic and deterministic risk assessment methods. Thus, most researchers primarily focus on longitudinal surveys concerning an individual method (Zheng and Liu, 2009). However, an individual method cannot achieve the best risk-assessment result in the worksites, and future perspectives should focus on the parallel application of a deterministic (DET) and a stochastic (STO) process (Marhavidas and Koulouriotis, 2012).

In fact, the contribution of the development and elaboration of STODET processes, to the health and safety science, could be focused (Marhavidas and Koulouriotis, 2011) on:

- a. The *improvement* of the risk assessment techniques
- b. The *comparison* of their outcome risk estimation results
- c. The *enrichment* of the scientific literature with new tools

In two recent works, we presented the development and the application of two STODET risk assessment methods based on the combination of special stochastic (STO) and deterministic (DET) processes, like the PRAT-TRF technique (Marhavidas and Koulouriotis, 2011), and the PRAT-TSP-SRE technique (Marhavidas and Koulouriotis, 2012).

Taking into account the above reasons, we proceed to the development of a new STO-DET risk assessment framework by combining the deterministic FTA (“fault-tree-analysis”) technique and the stochastic TRF (“time at risk failure”) model, and apply it on the worksite of an industrial productive procedure. The objective of this work is therefore twofold;

- a. We present a new risk assessment framework based on the combination of the deterministic FTA (“fault-tree-analysis”) technique and the stochastic TRF (“time at risk failure”) model
- b. We apply this FTA-TRF process on an industrial worksite to test its usefulness

This chapter consists further of three sections: 1) an overview of the main stochastic and deterministic risk analysis and assessment techniques, 2) the development of a new STODET risk assessment framework based on FTA-TRF combination, and 3) a case study for the simultaneous application of FTA and TRF techniques in industry.

2. Risk analysis and assessment techniques

There are various risk analysis and assessment techniques, which are included in the literature (e.g. Baker *et al.*, 1998; Kontogiannis *et al.*, 2000; Reiners *et al.*, 2005a, 2005b; Marhavidas and Koulouriotis, 2007, 2008, 2011; Marhavidas *et al.*, 2011a, 2011b; Doytchev and Szwillus, 2008; Marhavidas, 2009a, 2009b; Colli *et al.*, 2009; Johansson *et al.*, 2009; Lim and Zhang, 2009). A basic classification of the risk analysis and assessment methodologies based on the literature, includes the deterministic (DET) approach and the stochastic (STO) approach (Marhavidas and Koulouriotis, 2011). Furthermore, DET techniques are classified into three main categories: (a) the qualitative, (b) the quantitative, and (c) the hybrid techniques (qualitative-quantitative, semi-quantitative) (Marhavidas *et al.*, 2011a), while STO method includes the Classic Statistical Approach (CSA) and the Accident Forecasting Modelling (AFM) (Marhavidas and Koulouriotis, 2011). The reader could find a thorough presentation of the main deterministic and stochastic risk assessment and analysis techniques in the work of (Marhavidas and Koulouriotis 2011). Briefly stated, these approaches can be classified as follows:

A. Deterministic Techniques:

A.1 Qualitative Techniques:

- Checklists
- What-if analysis
- Safety audits
- Task Analysis
- STEP technique
- Hazard and Operability (HAZOP) study

A.2 Quantitative Techniques:

- The proportional risk assessment technique (PRAT)
- The decision matrix risk assessment (DMRA)

- Quantitative risk measures of societal risk
- The QRA (Quantitative Risk Assessment) tool
- Quantitative assessment of domino scenarios (QADS)
- The CREA (Clinical Risk and Error Analysis) method
- The weighted risk analysis (WRA)

A.3 Hybrid Techniques:

- Human Error Analysis Techniques (HEAT)
- Fault tree analysis (FTA)
- The ETA method (Event Tree Analysis)
- The RBM Method (Risk-based Maintenance)

B. Stochastic Techniques:

B.1 Classic statistic approach:

- Epistemic Models: The PEA (Predictive, Epistemic Approach) method
- Probability distributions of failure and reliability:
 - Exponential distribution
 - Normal distribution
- Event data-models
 - Constant Failure and Repair Rate Model (Rate Model)
 - Mean Time to Failure and Repair Model (MTTF/MTTR Model)
 - Time at Risk Failure (TRF) Model
 - Rate/MTTR Model

B.2 Accident forecasting modelling:

- Time-Series Stochastic Processes/Time-Series Method (TSM)
- Markov chain analysis
- Grey model
- Scenario analysis
- Regression method
- Neural networks
- Bayesian Networks

Fault tree analysis (FTA) is a deductive technique focusing on one particular accident event and providing a method for determining causes of that event. Fault trees are constructed from events and gates. Basic events can be used to represent technical failures that lead to accidents while intermediate events can represent operator errors that may exacerbate technical failures. The gates of the fault trees can be used to represent several ways in which machine and human failures combine to give rise to the accident. For instance, an AND-gate implies that both initial events need to occur in order to give rise to the intermediate event. Conversely, an OR-gate means that either of two initial events can give rise to the intermediate event. In the context of accident analysis, an OR-gate implies lack of evidence; as more evidence becomes available we can become more certain which of the two initial events were true (Vesely *et al.*, 1981 ; Kontogiannis *et al.*, 2000; Harms-Ringdahl, 2001; Reniers *et al.*, 2005a; Yuhua and Datao, 2005; Hong *et al.*, 2009).

On the other side, we present here basic elements referring to the study of the stochastic behavior of single-component Occupational Health and Safety System (OHSS) concerning the worksite of a company and being subjected to failures (breakdowns) by observing

them over a period of time. Let us simplify things by assuming that the system is put to work at the instant $t = 0$ for the first time and that it presents a single mode of failure. The component, starting a lifetime period at the instant $t = 0$, is functioning for a certain period of time X_1 (random) at the end of which it breaks down. It remains in this state for a period of time Y_1 (random) during its replacement (or repair) and, at the end of this time, the component is again put to work and so on. In this case, the system is said to be repairable. In the contrary case, when the component breaks down and continues to remain in this state, the system is said to be non-repairable (Limnios, 2007; Haimes, 2009; Marhavilas and Koulouriotis, 2011). Let X be a random variable (r.v.) representing the lifetime of the system with F its cumulative distribution function (c.d.f.): $F(t) = P(X \leq t)$. If F is absolutely continuous, the random variable X has a probability density function (p.d.f.) f and can be written as:

$$f(t) = \frac{d}{dt} F(t) = \lim_{\Delta t \rightarrow 0} \frac{P(t < X \leq t + \Delta t)}{\Delta t} \quad (1)$$

Reliability: The complementary function of F , noted as \bar{F} , is the reliability (or probability of success) of the system, noted as $R(t)$. That is to say:

$$R(t) = \bar{F} = 1 - F(t) = P(X > t) \quad (2)$$

Where:

$$R(t) = \int_t^{\infty} f(u) du, \quad R(0) = 1, \quad R(+\infty) = 0 \quad (3)$$

The exponential distribution is the most frequently used in relation to the reliability of systems. A system whose stochastic behavior is modeled by an exponential distribution is a system without memory, that is to say, for $t > 0, x > 0$, we have $P(X > t + x | X > t) = P(X > x)$. For the exponential distribution we have for $x \geq 0$:

$$f(t) = \lambda e^{-\lambda t}, \quad F(t) = 1 - e^{-\lambda t}, \quad R(t) = e^{-\lambda t}, \quad \lambda(t) = \lambda \quad (\text{the failure rate}) \quad (4)$$

Although, this distribution gives good modeling for the lifetime of electronic components, its use in other fields, such as in risk analysis for the modeling of OHSS in the worksites is justified.

Moreover, for a quantitative analysis to be performed, event failure and repair data-models could be specified for the events in the study of the stochastic behavior of single-component occupational health and safety systems (OHSS) being subjected to failures over a period of time. Some of the usual event data-models (Limnios, 2007; Isograph, 2008) are:

Mean Time to Failure and Repair Model (MTTF/MTTR Model): This model is the same as the constant failure and repair rate model described above, except that the parameters entered by the user are the mean time to failure (MTTF) (or mean time between failures (MTBF)) and the mean time to repair (MTTR). These parameters are related to the failure and repair rates by the following expressions:

$$\lambda = \frac{1}{MTTF}, \mu = \frac{1}{MTTR} \text{ (component repair rate)} \quad (5)$$

Time at Risk Failure (TRF) Model: This model allows users to specify a 'time at risk' that differs from the system lifetime. The model is useful for representing component failures that only contribute to system failure during certain phases of the lifetime of the system or duration of a mission. The unavailability of events (or the probability of failure) associated with this model are calculated using the expression

$$Q(t) = 1 - e^{-\lambda T} \quad (6)$$

where λ = failure rate, T = time at risk

It is worth noting that most researchers primarily focus on surveys concerning an individual method (Zheng and Liu, 2009). However, an individual method cannot achieve the best risk-assessment result in the worksites, and future perspectives should focus on the parallel application of a deterministic and a stochastic process (Marhavidas and Koulouriotis, 2012). So, we proceed to the development of a new STODET risk assessment framework by combining the deterministic FTA ("fault-tree-analysis") technique and the stochastic TRF ("time at risk failure") model, and apply it on the worksite of an industrial productive procedure.

3. A risk assessment framework based on FTA-TRF combination

Below, we present a new risk assessment framework based on a stochastic-deterministic (STODET) quantified risk evaluation according to function of Figure 1. In addition, Figure 2 shows the flowchart of this risk assessment framework, as a part of the risk management process, using safety aspects-guidelines of ISO/IEC (1999, 2009), (Høj and Kröger 2002), (BS 8800 2004), (van Duijine *et al.* 2008), (Suddle 2009), (Marhavidas *et al.* 2011b) and (Marhavidas and Koulouriotis 2011). This framework consists of three distinct phases: (a) the risk analysis, (b) the quantified risk evaluation and c) the risk assessment and safety-related decision making. The first phase includes the hazard sources' identification and the risk consideration/calculation, while the second one includes the stochastic and deterministic processes. The module #B emphasizes the application of a STODET quantified risk-evaluation, which is implemented by the simultaneous application and the jointly evaluation of the TRF ("Time at Risk Failure") stochastic model and the deterministic process of FTA ("Fault Tree Analysis").

3.1 Risk analysis

Risk analysis or safety analysis is an approach to identify the factors that may lead to accidents, and constitutes a systematic use of available information to identify hazards ((ISO/IEC, 1999; Marhavidas *et al.*, 2011b). In general, "danger" should be defined as an attribute of substances or processes, which may potentially cause harm. Furthermore, "risk" has been defined as the chance that someone or something that is valued will be adversely affected by the hazard, and also as a measure under uncertainty for the severity of a hazard (Høj and Kröger, 2002) while "hazard" is any unsafe condition or potential source of an undesirable event with potential for harm or damage (Reniers *et al.* 2005a).

3.1.1 Identification of hazard sources

Danger can be separated in two major categories: “Direct” and “indirect”. Direct danger includes the apparent accidents (fractures, scratches, tool injuries etc) and indirect, the danger which is not apparent and devious and comes from the exposure in sources of hazard, such as electromagnetic radiation, noise, weather conditions and raising weights, that cause hard-hearing, cancer, dizziness, respiratory problems and cardiac problems. The identification of hazard sources is usually comprised of specifying one or more scenarios of risks. A risk scenario describes an interaction between a person and a system or product that possesses hazardous characteristics. It describes the activity of the person(s) involved, the hazard(s), the external factors of the situation and the potential injury. Injury (real accidents’) data are the primary source of evidence to establish risk scenarios that describe critical pathways to injury. Furthermore, expert opinions are a significant source for creating risk scenarios. Experts rely on their technical knowledge about the system (with its intrinsic hazards) and the productive process, but they also need to apply their knowledge in order to identify relevant and plausible scenarios, for more information see (BS8800:1996, 1996; ILO-OSH, 2001; BS8800:2004, 2004; BS18004:2008, 2008; BS OHSAS18001:2007, 2007; OHSAS 18002:2008, 2008; Marhavidas *et al.* 2011b).

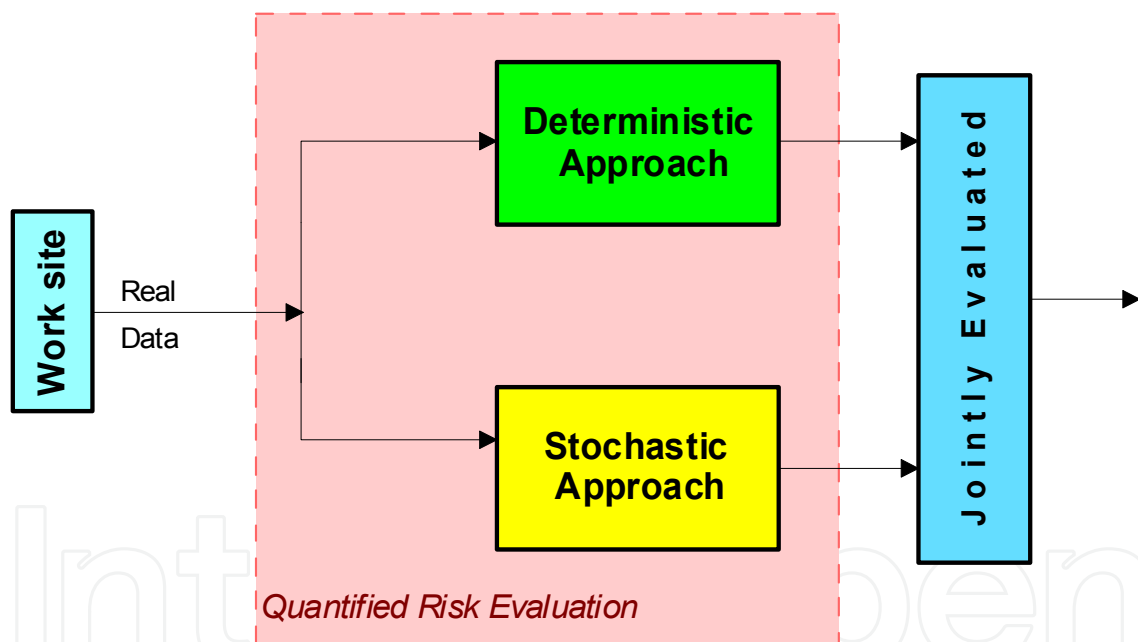


Fig. 1. The combination of a stochastic and a deterministic (STODET) approach in the quantified risk evaluation

The method used to analyze occupational risk follows the algorithm in Figure 2, and in that respect the following must be taken into account: a) gathering of information on the system (by using questionnaires, interviews and checklists) provides the basis for analysis and must be carried out systematically, b) the entire system and its activities should be included in the analysis, which must be designed systematically so as not to overlook important elements, c) the risks to which these hazards give rise must be assessed in a consistent manner, and d) a systematic approach is required even when safety proposals are to be generated and evaluated (Harms-Ringdahl, 2001; Marhavidas *et al.* 2011b; Marhavidas and Koulouriotis, 2012).

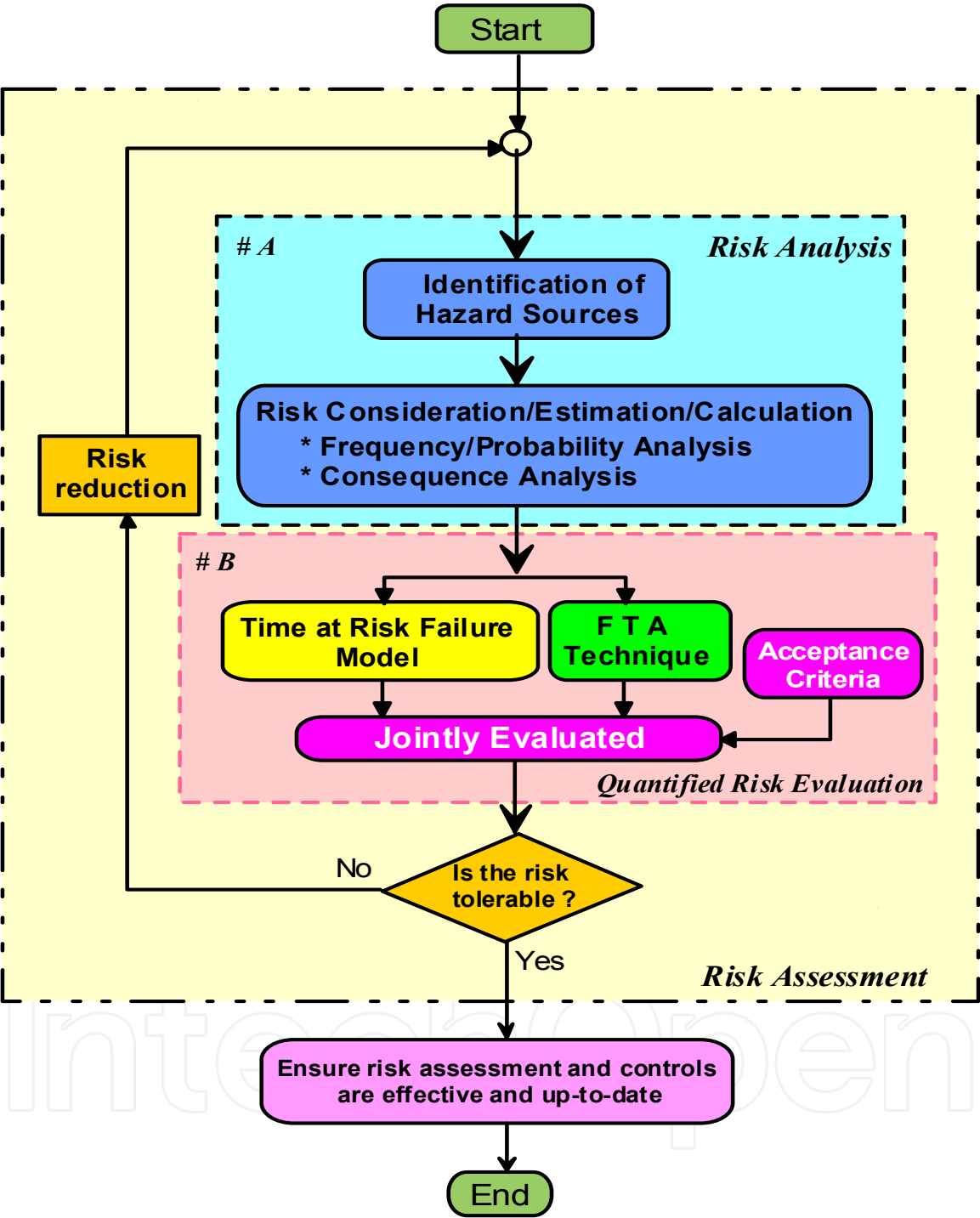


Fig. 2. The flowchart of an alternative risk assessment framework by including a stochastic and a deterministic (STODET) approach, as a part of the risk management process, based on safety aspects–guidelines of (ISO/IEC 1999, 2009), (Høj and Kröger 2002), (BS 8800 2004), (van Duijine *et al.* 2008), (Suddle 2009), (Marhavilas *et al.* 2011b) and (Marhavilas and Koulouriotis 2011).

3.1.2 Risk consideration

The risk consideration is achieved by the following steps (Marhavidas *et al.* 2011b; Marhavidas and Koulouriotis, 2011):

- **Estimation of the likelihood of hazard sources occurrence (P):** The occurrence of injury/damage (or the likelihood of hazard-sources occurrence) may depend on several factors related to the actual interaction of the employee with a hazard source and also to the energy transferred during this interaction. This likelihood depends on the (hidden) potential energy that may become active during unsafe behaviour, the energy absorbing capacity, resilience and other qualities of the human body (Marhavidas *et al.*, 2011b).
- **Estimation of the consequences' severity (S):** The risk assessment techniques require the estimation of the injury's seriousness gradation (i.e. the consequences' severity). Of course, severity is a subjective issue, because some events, such as cuts, possibly have non-serious effects, while others, such as injuring due to slips, may become more significant. To solve this problem, we can gradate the severity of injury (or damage) by specifying the **level** of employee's **inability** in association with the **duration** that the employee is absent from his work according to the obligations of Law 3850/2010 of the Greek State (HR, 2010; Marhavidas *et al.* 2011b).
- **Estimation of the frequency-level of exposure to hazard sources (f):** The probability that a dangerous scenario may occur, depends on the frequency of exposure to the hazard sources. It is worth to note that we can estimate the gradation of the frequency-level by using information about workers' activities which may give an indication about the frequency of a risky activity (Marhavidas *et al.* 2011b). Furthermore, the gradation of the frequency-level can be illustrated by the *Frequency (or Exposure) Factor* in association with the frequency of appearance of a potential hazard source (or an undesirable event), and according to the results of the work of Marhavidas and Koulouriotis (2008, their Table 3).

3.2 Quantified risk evaluation

Quantified risk evaluation techniques enable risk assessors to scale their appreciation of the severity of the short and long term consequences of accidents and the factors that influence the occurrence of an accident scenario. The methods of quantified risk evaluation need to be as precise as possible to differentiate the risk level of various activities (Marhavidas *et al.*, 2011b). Below, we explain (in association with module #B of Figure 2) the usage and implementation of the STO-DET quantified risk-evaluation process, by the combination and the jointly evaluation of the TRF stochastic model and the FTA deterministic process.

3.2.1 A stochastic model: "Time at risk failure model"

According to this model the probability of failure is expressed using the relation $Q(t) = 1 - e^{-\lambda T}$ (λ is the failure rate, T is the time of exposure). It is worth to note that there is a magnitude (called as "mean time"), that plays a very important role in connection with the reliability and the probability of failure of the occupational health and safety systems (OHSS). One significant "mean time" is the "mean time between failures" (MTBF), which is expressed by the relation: $\lambda = 1 / MTBF$

3.2.2 A deterministic model: “FTA” model

“FTA” is constructed from events and gates. Basic events can be used to represent technical failures that lead to accidents while intermediate events can represent operator errors that may exacerbate technical failures. The gates of the fault trees can be used to represent several ways in which machine and human failures combine to give rise to the accident.

3.3 The decision making

In the risk management, it is fundamental to distinguish between the risk assessment process and the decision-making process (ISO/IEC Guide-73, 2009; Marhavidas *et al.*, 2011b). In particular, the risk assessment is a part of the risk management process, ending up with the decision making (Salvi and Gaston, 2004). In addition, the risk assessment is a tool used to measure the risk, characterized by the likelihood and severity of specific events, and can further be a basis for decision-making (Høj and Kröger, 2002). Risk-based decision-making processes are naturally based on the risk assessment criteria, but could integrate also other criteria that can be cultural, economical, ethical etc (Salvi and Gaston, 2004).

We will now present a case study in order to illustrate our approach, i.e. the simultaneous application of FTA and TRF techniques, in industry.

4. Case study: Application of FTA-TRF on an Industrial worksite

In the following passages, we proceed to the application of FTA-TRF process on the worksite of a tobacco-industry’s chemical-laboratory (TICL).

4.1 Deterministic approach: Application of FTA

Figure 3 shows the FTA construction concerning one of the more important hazard-sources that exist in a tobacco-industry chemical-laboratory i.e. the “EMPLOYEES AMBUSTION/BURN”. This hazard-source has been determined by the application of Figure’s 2 risk-analysis phase on the worksite of the chemical-laboratory. In particular, we use in the FTA chart two types of graphic symbols (Limnios, 2007): (i) the OR/AND logic gates/operators, and (ii) the fundamental events (circle for an elementary basic event and rectangle for a top or intermediate event). We have designated the set of basic events of the fault tree by the word “EVENT”, that is, $EVENT = \{EVENT-1, ..., EVENT-n\}$. The numbers assigned to the basic events on the fault tree correspond to the indices of the events. The OR operator describes the failure of a series system, while the AND one the failure of a parallel system. Similar FTA charts can be constructed for all hazard-sources exist in the industry’s worksite.

4.2 Stochastic approach: Application of the “time at risk failure” model

In this section, we apply the “TRF” model by using the methodological background of Sections 2 and 3.2.1. As an example, on a single-component OHSS of TICL, like the “EMPLOYEES AMBUSTION/BURN”, the occurrence frequency of E1-event is estimated to be $f=2400 \text{ yr}^{-1}$ and the estimated likelihood of accidents is $P=10^{-4}$, which means that the estimated number of accidents (per year) is $N=0.24$, implying that $MTBF=36500 \text{ hr}$ and $\lambda=2.73973E-05 \text{ hr}^{-1}$. By using as exposure time (T) the duration of 8760 working hours (w.hrs) i.e. one full-time working year

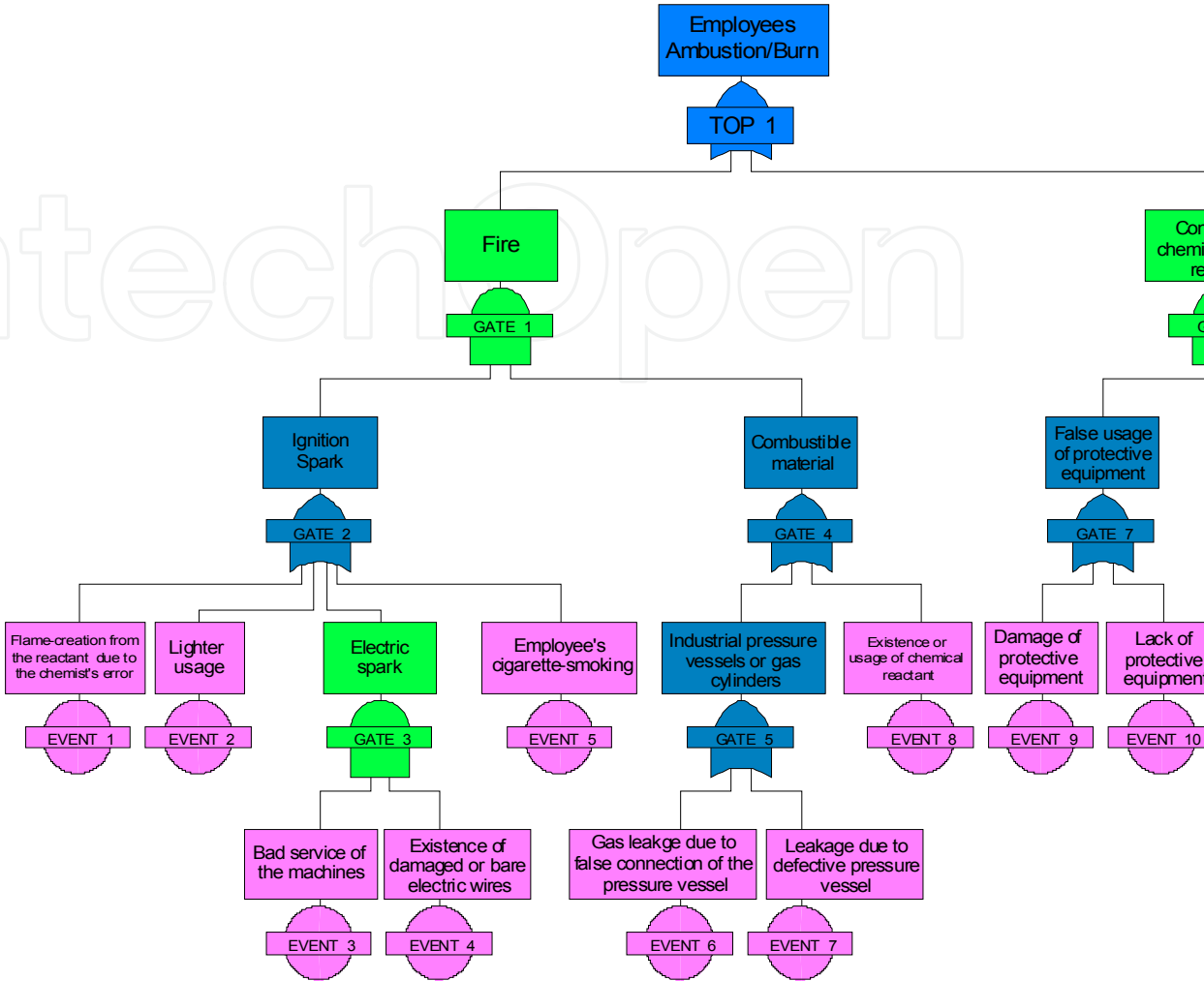


Fig. 3. The FTA construction concerning one of the more important hazard-sources exist in a tobacco-industry chemical-laboratory, the "EMPLOYEE'S AMBUSTION/BURN"

4.3 Joint evaluation of FTA-TRF combination

We proceed to the joint evaluation of FTA-TRF combination. More specifically, the probabilistic assessment of the FTA consists of calculating the probability of the top event TOP-1 (Figure 3) starting from the probabilities Q_i ($i=1, \dots, 12$) of the basic events (E1-E12) which are illustrated in Table 1. This can be done directly because the FTA construction of Figure 3 does not possess any repeated event (according to the rules of Limnios' (2007) work), and it is carried out with a simple approach, which consists of climbing back up the FTA by starting from its primary operators up to the top event and using the Boolean algebra (algebra of events) (Haimes, 2009).

Thus, we define the following set of equations:

$$Q(\text{TOP1}) = Q(G1) + Q(G6) - Q(G1) * Q(G6)$$

$$Q(G1) = Q(G2) * Q(G4)$$

- $Q(G2) = Q(E1) + Q(E2) + Q(G3) + Q(E5) - Q(E1) * Q(E2) * Q(G3) * Q(E5)$
- $Q(G3) = Q(E3) * Q(E4)$
- $Q(G4) = Q(G5) + Q(E8) - Q(G5) * Q(E8)$
- $Q(G5) = Q(E6) + Q(E7) - Q(E6) * Q(E7)$

$$Q(G6) = Q(G7) * Q(G8)$$

- $Q(G7) = Q(E9) + Q(E10) - Q(E9) * Q(E10)$
- $Q(G8) = Q(E11) + Q(E12) - Q(E11) * Q(E12)$

By using the numbers of Table 1 we take the following results:

$$Q(G7) = 0.21 + 0.11 - 0.21 * 0.11 = 0.2969$$

$$Q(G8) = 0.21 + 0.11 - 0.21 * 0.11 = 0.2969$$

$$Q(G6) = 0.2969 * 0.2969 = 0.08815$$

$$Q(G5) = 0.0 + 0.12 - 0.0 * 0.12 = 0.12$$

$$Q(G4) = 0.12 + 0.21 - 0.12 * 0.21 = 0.3048$$

$$Q(G3) = 0.0 * 0.0 = 0.0$$

$$Q(G2) = 0.21 + 0.11 + 0.0 + 0.38 - 0.21 * 0.11 * 0.0 * 0.38 = 0.7$$

$$Q(G1) = 0.7 * 0.3048 = 0.213$$

So the probability of failure Q of the single-component TICL's OHSS due to the "EMPLOYEES AMBUSTION/BURN" hazard source is

$$Q(\text{TOP1}) = 0.213 + 0.08815 - 0.213 * 0.08815 = \mathbf{0.282374 \text{ or } 28.2\%}$$

This means that this is a *medium-risky hazard source* because $10\% < Q < 50\%$, according to the work of (Marhavilas and Koulouriotis 2011).

The same process for the calculation of Q can be applied in all hazard-sources determined by the risk-analysis on the TICL's OHSS, which could classify them into three categories like in the work of (Marhavilas and Koulouriotis 2011) as follows:

- *High-risky sources* ($Q \geq 50\%$)
- *Medium-risky sources* ($10\% < Q < 50\%$)
- *Low-risky sources* ($Q \leq 10\%$)

EVENT	Occur- rence Freque- ncy (<i>f</i>) [<i>yr</i> ⁻¹]	Likeli- hood (<i>P</i>)	Est. number of acc. per year (<i>N</i> = <i>P</i> * <i>f</i>) [<i>acid./yr</i>]	MTBF [<i>hr</i>]	λ =1/MTBF [<i>hr</i> ⁻¹]	T [<i>w.hr</i>]	λ *T	Relia- bility $R=e^{-\lambda t}$	Prob. of failure $Q=1-R$
E1	2,400	10 ⁻⁴	0.24	36,500	2.74E-05	8,760	0.240	0.79	0.21
E2	1,200	10 ⁻⁴	0.12	73,000	1.37E-05	8,760	0.120	0.89	0.11
E3	48	10 ⁻⁴	0.0048	1,825,000	5.48E-07	8,760	0.005	1.00	0.00
E4	48	10 ⁻⁴	0.0048	1,825,000	5.48E-07	8,760	0.005	1.00	0.00
E5	4,800	10 ⁻⁴	0.48	18,250	5.49E-05	8,760	0.480	0.62	0.38
E6	6	10 ⁻⁴	0.0006	14,600,000	6.85E-08	8,760	0.001	1.00	0.00
E7	-	-	-	67,927 (*)	1.47E-05	8,760	0.129	0.88	0.12
E8	2,400	10 ⁻⁴	0.24	36,500	2.74E-05	8,760	0.240	0.79	0.21
E9	240	10 ⁻⁴	0.024	365,000	2.74E-05	8,760	0.240	0.79	0.21
E10	1,200	10 ⁻⁴	0.12	73,000	1.37E-05	8,760	0.120	0.89	0.11
E11	2,400	10 ⁻⁴	0.24	36,500	2.74E-05	8,760	0.240	0.79	0.21
E12	1,200	10 ⁻⁴	0.12	73,000	1.37E-05	8,760	0.120	0.89	0.11

(*) From the technical specifications

Table 1. Depiction of the results of TRF application on the OHSS of a tobacco-industry’s chemical-laboratory, concerning all basic events E1-E12 of the FTA construction of Figure 3

5. Discussion

We can consider the risk as a quantity, which can be estimated and expressed by a mathematical relation, under the help of real accidents’ data. The risk assessment is generally achieved by a deterministic and/or a stochastic method. The diversity in risk analysis procedures is such that there are many appropriate techniques for any circumstance and the choice has become more a matter of taste. However, an individual method cannot achieve the best risk-assessment result in the worksites and future perspectives should focus on the parallel application of a deterministic technique with a stochastic one.

The objective of this work is twofold a) present of a new risk assessment framework based on the combination of the deterministic FTA (“fault-tree-analysis”) technique and the stochastic TRF (“time at risk failure”) model, and b) apply the FTA-TRF process on an industrial worksite.

In particular, the new alternative risk assessment framework we develop is achieved in Figure 1 by the combination of a stochastic and a deterministic process (STODET). This process consists of three distinct phases: (a) the risk analysis, (b) the quantified risk

evaluation and c) the risk assessment and safety-related decision making. The first phase includes the hazard sources' identification and the risk calculation, while the second one the stochastic and deterministic processes (Figure 2 illustrates its flowchart as a part of the risk management process). To continue, the STODET quantified risk-evaluation consists of the combined evaluation of the TRF ("Time at Risk Failure") stochastic model and the FTA ("Fault Tree Analysis") deterministic technique (module #B of Figure 3 emphasizes it).

Furthermore, in order to present a case study, we proceeded to the application of FTA-TRF on the worksite of a tobacco-industry's chemical-laboratory (which is situated in Thrace, Greece) by using real data of undesirable events and accidents. So, the probability of failure Q of the single-component TICAL's OHSS due to the "EMPLOYEES AMBUSTION/BURN" hazard source was calculated to be $Q=28.2\%$, which means it is a *medium-risky hazard source* because $10\% < Q < 50\%$ (Marhavilas and Koulouriotis, 2011). The same process for the calculation of Q can be applied in all hazard-sources determined by the risk-analysis on the TICAL's OHSS, which could classify them into three categories: (i) high-risky sources ($Q \geq 50\%$), (ii) medium-risky sources ($10\% < Q < 50\%$), and (iii) low-risky sources ($Q \leq 10\%$).

6. Future work and closure

In a future work, we are planning: (i) the development of another risk assessment framework including more stochastic and deterministic techniques, and (ii) the application on other industrial OHSS. This means that we have the ability to combine more different stochastic techniques like Markov chains, the grey model, neural networks, the scenario analysis, the regression method, Bayesian networks etc (Zheng and Liu, 2009; Marhavilas and Koulouriotis, 2011), with more deterministic techniques like DMRA (for more information: Marhavilas *et al.* 2011a, 2011b). In the work of (Marhavilas *et al.* 2011a; see their Table 8), there is a comparison of the various DET methodologies focusing on their advantages/disadvantages, and highlighting areas of future improvements, while in the work of (Zheng and Liu 2009; see their table 8), a comparison of different STO models, a fact which could help the reader to select the best STO-DET combination.

Apart from the exponential distribution, other usual probability distributions dealing with the reliability of health and safety systems which could be applied and tested are the following (Limnios, 2007; Marhavilas and Koulouriotis 2011):

- **Normal distribution:** It is used for modeling the duration and the lifetime of the systems and expressed by the relations

$$f(t) = \frac{1}{\sqrt{2\pi}\sigma} e^{-\frac{(t-\mu)^2}{2\sigma^2}}, \quad R(t) = \int_t^{\infty} f(y)dy, \quad \lambda(t) = \frac{f(t)}{R(t)} \quad (7)$$

Where μ is the average and σ is the standard deviation.

- **Log-Normal distribution:** It is expressed by the relations

$$f(t) = \frac{1}{\sqrt{2\pi}\sigma t} e^{-\frac{(\ln t - \mu)^2}{2\sigma^2}} \quad (t \geq 0), \quad R(t) = \int_t^{\infty} f(y)dy, \quad \lambda(t) = \frac{f(t)}{R(t)} \quad (8)$$

- **Weibull distribution:** Due to the vast variations of form that it can take up according to the values of its parameters, the Weibull distribution is used in many domains of reliability, particularly in those concerned with the reliability of mechanical components. It is expressed by the relations

$$f(t) = \frac{\beta}{\eta^\beta} (t - \gamma)^{\beta-1} \cdot e^{-\frac{(t-\gamma)^\beta}{\eta}}, \quad R(t) = e^{-\frac{(t-\gamma)^\beta}{\eta}}, \quad \lambda(t) = \frac{\beta(t-\gamma)^{\beta-1}}{\eta^\beta} \quad (9)$$

Where β is the parameter of form, η the parameter of scale and γ the parameter of localization. For $\beta=1$ and $\gamma=0$, we will obtain the exponential distribution.

As a general observation in the end, we believe that the usage of the new STODET alternative risk assessment scheme, presented here, would help industries achieve better occupational risk protection.

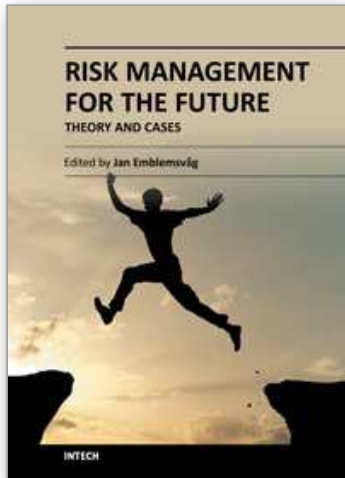
7. References

- Baker, S., Ponniah, D., Smith, S. (1998). Techniques for the analysis of risks in major projects. *Journal of the Operational Research Society*, 49, 6, 567-572.
- BS 18004:2008 (2008). Guide to achieving effective occupational health and safety performance. ISBN:978 0 580 529108.
- BS 8800:1996 (1996). Guide to occupational health and safety management systems. ISBN:0 580 25859 9.
- BS 8800:2004 (2004). Guide to occupational health and safety management systems. ISBN:0 580 43987 9.
- BS OHSAS 18001:2007 (2007). Occupational health and safety management systems. Requirements. ISBN:978 0 580 59404 5, p.34.
- Colli, A., Serbanescu, D., Ale, B.J.M. (2009). Indicators to compare risk expressions, grouping, and relative ranking of risk for energy systems: Application with some accidental events from fossil fuels. *Safety Science*, 47, 5, 2009, 591-607.
- Doytchev, D.E., Szwillus, G. (2008). Combining task analysis and fault tree analysis for accident and incident analysis: A case study from Bulgaria. *Accident Analysis and Prevention*, doi:10.1016/j.aap.2008.07.014.
- Haimes, Y.Y. (2009). Risk modeling, assessment, and management. A John Wiley & Sons Inc. publication, 3rd edition ISBN 978-0-470-28237-3.
- Harms-Ringdahl, L. (2001). Safety Analysis, Principles and Practice in Occupational Safety. 2nd edition, ISBN: 9780415236553, p.302, CRC Press.
- Hellenic Republic (HR) (2010). Law 3850/2010: Code of Health and Safety in the worksites, National Printing-House, Issue 1, Part 84/2.6.2010, pp. 1721-1750.
- Høj, N.P., Kröger, W. (2002). Risk analyses of transportation on road and railway from a European Perspective. *Safety Science*, 40, 1-4, 337-357.
- Hong, E-S., Lee, I-M., Shin, H-S., Nam, S-W., Kong, J-S. (2009). Quantitative risk evaluation based on event tree analysis technique: Application to the design of shield TBM. *Tunnelling and Underground Space Technology*, 24, 3, 269-277.
- ILO-OSH (2001). Guidelines on occupational safety and health management systems. ISBN: 9221116344.

- ISO/IEC Guide 51 (1999). Safety Aspects – Guidelines for Their Inclusion in Standards. ISO/IEC (2nd ed.), Geneva.
- ISO/IEC 31000. (2009). Risk management-Principles and guideline, ISBN 0 7337 9289 8.
- ISO/IEC Guide 73:2009 (2009). Risk management-Vocabulary.
- Isograph (2008). Fault Tree+ for windows: Fault Tree Analysis-Event Tree Analysis-Markov Analysis. Isograph Limited FaultTree+V11.2 document, Version 11.2, p.1-325.
- Johansson, Ö., Wanvik, P.O., Elvik, R. (2009). A new method for assessing the risk of accident associated with darkness. Accident Analysis and Prevention, doi:10.1016/j.aap.2009.04.003.
- Kontogiannis, T., Leopoulos, V., Marmaras, N. (2000). A comparison of accident analysis techniques for safety-critical man-machine systems. International Journal of Industrial Ergonomics, 25, 327-347.
- Lim, H.J., Zhang, X. (2009). Semi-parametric additive risk models: Application to injury duration study. Accident Analysis and Prevention 41, 211-216.
- Limnios, N. (2007). Fault Trees. ISTE Ltd, UK, ISBN 13: 978-1-905209-30-9.
- Marhavilas P.K. (2009a). Health and Safety in the Work-Handling of the Occupational Danger. Tziolas Edition, ISBN 978-960-418-171-1, pages 289.
- Marhavilas P.K. (2009b). Risk Estimation in the Greek Constructions' Worksites by using a Quantitative Assessment Technique and Statistical Information of Occupational Accidents. Journal of Engineering Science and Technology Research, Vol. 2, Issue 1, p.p. 51-55, ISSN 1791-2377.
- Marhavilas, P.K., Koulouriotis, D.E. (2007). Risk Estimation in the Constructions' Worksites by using a Quantitative Assessment Technique and Statistical Information of Accidents. Technika Chronika Sci. J.TCG, Scientific Journal of Technical Chamber of Greece, Vol I, Issue 1-2, p. 47-60, ISSN 1106-4935.
- Marhavilas P.K., Koulouriotis, D.E. (2008). A risk estimation methodological framework using quantitative assessment techniques and real accidents' data: application in an aluminum extrusion industry. Journal of Loss Prevention in the Process Industries, Elsevier, doi:10.1016/j.jlp.2008.04.009, vol. 21, issue 6, p.p. 596-603.
- Marhavilas P.K. and D.E. Koulouriotis (2011). Developing a new alternative risk assessment framework in the work sites by including a stochastic and a deterministic process: a case study for the Greek Public Electric Power Provider. Article in press, Safety Science, Elsevier, doi:10.1016/j.ssci.2011.10.0006.
- Marhavilas P.K. and D.E. Koulouriotis (2012). A combined usage of stochastic and quantitative risk assessment methods in the worksites: Application on an electric power provider. Reliability Engineering and System Safety, Elsevier, 97 (2012), pp.36-46, doi: 10.1016/j.ress.2011.09.006.
- Marhavilas P.K., D.E. Koulouriotis and V. Gemeni (2011a). Risk Analysis and Assessment Methodologies in the Work Sites: On a Review, Classification and Comparative Study of the Scientific Literature of the Period 2000-2009. Journal of Loss Prevention in the Process Industries, Elsevier, DOI: 10.1016/j.jlp.2011.03.004, vol 24, issue 5, pp. 477-523.
- Marhavilas, P.K., D.E. Koulouriotis and C. Mitrakas (2011b). On the development of a new hybrid risk assessment process using occupational accidents' data: Application on the Greek Public Electric Power Provider. Journal of Loss Prevention in the Process Industries, Elsevier, DOI 10.1016/j.jlp.2011.05.010, vol 24, issue 5, pp. 671-687.

- OHSAS 18002:2008 (2008). Occupational health and safety management systems. Guidelines for the implementation of OHSAS 18001:2007. ISBN: 978 0 580 61674 7, p.88.
- Reniers, G.L.L., Dullaert, W., Ale, B.J.M., Soudan, K. (2005a). Developing an external domino prevention framework: Hazwim. *Journal of Loss Prevention in the Process Industries*, 18, 127-138.
- Reniers, G.L.L., Dullaert, W., Ale, B.J.M., Soudan, K. (2005b). The use of current risk analysis tools evaluated towards preventing external domino accidents. *Journal of Loss Prevention in the Process Industries*, 18, 119-126.
- Salvi, Ol. and Gaston, D. (2004). Risk assessment and risk decision-making process related to hazardous installation in France. *Journal of Risk Research*, 7: 6, 599-608, DOI: 10.1080/1366987042000192192.
- Suddle, Sh. (2009). The weighted risk analysis. *Safety Science*, 47, 668-679.
- van Duijne, Fr. H., van Aken, D. and Schouten, E.G. (2008). Considerations in developing complete and quantified methods for risk assessment. *Safety Science*, 46(2), 245-254.
- Vesely, W.E., Goldberg, F.F., Roberts, N.H., Haasl, D.F. (1981). *Fault Tree Handbook*. US Nuclear Regulatory Commission, Washington, DC.
- Yuhua, D., and Datao, Y. (2005). Estimation of failure probability of oil and gas transmission pipelines by fuzzy fault tree analysis. *Journal of Loss Prevention in the Process Industries*, 18, 83-88.
- Zheng X., Liu M. (2009). An overview of accident forecasting methodologies. *Journal of Loss Prevention in the Process Industries*, 22, 4, 484-491.

IntechOpen



Risk Management for the Future - Theory and Cases

Edited by Dr Jan Emblemsvåg

ISBN 978-953-51-0571-8

Hard cover, 496 pages

Publisher InTech

Published online 25, April, 2012

Published in print edition April, 2012

A large part of academic literature, business literature as well as practices in real life are resting on the assumption that uncertainty and risk does not exist. We all know that this is not true, yet, a whole variety of methods, tools and practices are not attuned to the fact that the future is uncertain and that risks are all around us. However, despite risk management entering the agenda some decades ago, it has introduced risks on its own as illustrated by the financial crisis. Here is a book that goes beyond risk management as it is today and tries to discuss what needs to be improved further. The book also offers some cases.

How to reference

In order to correctly reference this scholarly work, feel free to copy and paste the following:

P.K. Marhavilas and D.E. Koulouriotis (2012). The Deterministic and Stochastic Risk Assessment Techniques in the Work Sites: A FTA-TRF Case Study, Risk Management for the Future - Theory and Cases, Dr Jan Emblemsvåg (Ed.), ISBN: 978-953-51-0571-8, InTech, Available from: <http://www.intechopen.com/books/risk-management-for-the-future-theory-and-cases/the-stochastic-behavior-of-a-single-component-occupational-health-and-safety-system-in-association-w>

INTECH
open science | open minds

InTech Europe

University Campus STeP Ri
Slavka Krautzeka 83/A
51000 Rijeka, Croatia
Phone: +385 (51) 770 447
Fax: +385 (51) 686 166
www.intechopen.com

InTech China

Unit 405, Office Block, Hotel Equatorial Shanghai
No.65, Yan An Road (West), Shanghai, 200040, China
中国上海市延安西路65号上海国际贵都大饭店办公楼405单元
Phone: +86-21-62489820
Fax: +86-21-62489821

© 2012 The Author(s). Licensee IntechOpen. This is an open access article distributed under the terms of the [Creative Commons Attribution 3.0 License](https://creativecommons.org/licenses/by/3.0/), which permits unrestricted use, distribution, and reproduction in any medium, provided the original work is properly cited.

IntechOpen

IntechOpen