

# We are IntechOpen, the world's leading publisher of Open Access books Built by scientists, for scientists

6,900

Open access books available

186,000

International authors and editors

200M

Downloads

Our authors are among the

154

Countries delivered to

TOP 1%

most cited scientists

12.2%

Contributors from top 500 universities



WEB OF SCIENCE™

Selection of our books indexed in the Book Citation Index  
in Web of Science™ Core Collection (BKCI)

Interested in publishing with us?  
Contact [book.department@intechopen.com](mailto:book.department@intechopen.com)

Numbers displayed above are based on latest data collected.  
For more information visit [www.intechopen.com](http://www.intechopen.com)



# Leptospirosis: Epidemiologic Factors, Pathophysiological and Immunopathogenic

Marcia Marinho

*Laboratory of Microbiology, Department of Support, Animal Production and Health Course for Veterinary Medicine of UNESP, Campus Araçatuba, São Paulo  
Brazil*

## 1. Introduction

Leptospirosis is a disease of worldwide distribution present on all continents except Antarctica (Adler & Montezuma, 2010) affecting wildlife, domestic and man. Leading consequently serious socio-economic and public health. It is currently the highest incidence of zoonosis in the world, also considers as an occupational disease, and reemerging infectious disease, occurring endemic and epidemic in developing countries with tropical and subtropical (Levett, 2001; Bharti et al., 2003, Ko et al , 2009). more frequently in tropical and developing countries (Bharti et al, 2003), acarretando with this serious social and economic problems. The disease is an acute infection caused by a spirochete *Leptospiraceae* family, consisting of two genera, *Leptospira* and *Leptonema*. Recently, the genus *Leptospira* was divided into 17 species based on molecular classification (DNA), saprophytic and pathogenic species (Brazil 2002; Bharti et al. 2003). The pathogenic species are: *L. interrogans*, *L. alexanderi*, *L. fanei*, *L. inadai*, *L. kirschineri*, *L. meyeri*, *L. borgetersenii*, *L. weil*, *L. noguchi*, *L. santarosai*, Genomospecie 1, Genomospecie 4, 5 Genomospecie. The serotypes of *Leptospira* are interrogans Australis, Bratislava, Bataviae, Canicola, Hebdomadis, Icterohaemorrhagiae Copenhageni, Lai, Pomona, Pyrogenes, Hardjo and divided into serogroups (Ribeiro, 2006). The reservoir animals, mainly rats, are the most frequent disseminators, by eliminating spirochetes in the urine. *Leptospira* spp. can enter the body through intact skin or not, the oral mucosa, nasal and conjunctival (Kobayashi, 2001). The clinical manifestations of leptospirosis vary according to species, individual susceptibility, the pathogenicity and virulence of the serovar involved (Venugopal, 1990, Macedo 1991). After penetration of the bacteria likely, the organism spreads to the bloodstream to all organs (Hüttner et al, 2002). The incubation period is usually around 5-14 days, but have been described as short or long periods in some cases, such as 72 hours a month or more (Jezior, 2005). Leptospirosis is characterized by a vasculitis. The damage to capillary endothelial cells to the underlying cause of clinical manifestations such as renal tubular dysfunction, liver disease, myocarditis and pulmonary hemorrhage (Hill, 1997).

The clinical features are: a) kidneys: interstitial nephritis, tubular necrosis, decreased capillary permeability, and the combination of hypovolemia resulting in renal failure, b) in the liver: necrosis with central lobular proliferation of Kupffer cells and hepatocellular dysfunction c) in the lung, the lesions were secondary to vascular damage resulting in interstitial hemorrhage d) in the skin, the lesions occur as a result of vascular epithelial

injury, and) in skeletal muscle: the lesions were secondary to edema, vacuolation of the myofibril and damage of blood vessels, lesions of the vascular system in general, would result in capillary rupture, hypovolemia and shock (Jezior, 2005). In humans and dogs the most frequent clinical symptoms are severe hepatitis and nephritis (Mosier, 1957; Hagiwara et al., 1975). In dogs the most obvious symptom is jaundice (Greene et al. 1998; Sonrie et al., 2001), fever, myalgia, prostration and the evolution of the process, can present anuria, oliguria or polyuria, indicating different degrees of commitment renal (Masuzawa et al. 1991; McDonough, 2003). In cattle, the symptoms are related to the reproductive sphere as abortion and agalactia (Bercovich, 1989) and may have episodes of mastitis caused by serovar hardjo when determining the drop syndrome milk or "milk drop syndrome" (Higgins et al. , 1980, Pearson et al., 1980). In pigs, sheep and goats are seen sporadic reproductive disorders and, possibly, nervous and respiratory systems framework (Andre-Fontaine, 1985; Giles, 1993). Horses can be no abortion (Shapiro & Prescott, 1999) and ocular lesions (Jungherr 1944; Bohl and Ferguson 1952; Kemenes et al., 1985), such as recurrent uveitis, which have been observed after infection, particularly, by *L. interrogans* serovar pomona (Nick et al., 2000). The cats have to be refractory (Find and Szyfres, 1989). However, seroepidemiologic study in this species, conducted by different authors report seroconversion to multiple *Leptospira* spp (Langoni et al. 1998; Alves et al., 2003). From the epidemiological point of view, it is important to know the species of animals that act as reservoirs, and what the serovars prevalent in a given area. Some serovars have right choice for some species, so called primary hosts, in which cause mild disease with little damage. These can still host the leptospira in their renal tubules, where they remain free from the action of antibodies, and eliminate them through urine intermittently for long periods (Lamb et al., 1981), thus acting as a source of infection for man and other animals. The impact of leptospirosis in terms of public health is reflected in the high cost of treatment of humans afflicted with a fatality rate of about 5% to 20%. However, with regard to animal health, the consequences of infection are particularly the economic sphere, in view of the involvement of cattle, horses, pigs, goats and sheep, food producing animal species noble as meat, milk, and still products of industrial interest, such as wool and leather (Badke, 2001).

The disease course can vary from common symptomatic infection in endemic regions (Ashford et al., 2000), undifferentiated febrile illness, or syndrome to the presence of aseptic meningitis with low morbidity (Berman et al., 1973) or fulminant disease similar to toxic shock syndrome (Vernel-Pauillac and Merien, 2006) with jaundice, myocarditis, renal failure and cardiac hemorrhage, meningitis and death (Levett, 2001) have been described as epidemic in regions of severe leptospirosis in urban areas of Brazil (Ko et. al., 1999) The Jarisch-Herxheimer reaction is not an uncommon complication, when investigated (McBriede et al., 2005). The lung is a target organ that during leptospira infection, presents a hemorrhagic pneumonitis with varying degrees of severity. Under electron microscopy it is observed that the primary lesion is found in endothelial cells of capillaries (Huttner et al., 2002). Seijo et al (2002) classified the respiratory impairment present in leptospirosis in three groups: a) mild to moderate (20 to 70% of patients), pulmonary infiltrates frequently associated with jaundice and a slight alteration of renal function, b) with jaundice severe kidney disease and bleeding (Weill syndrome) occasionally death from kidney failure and myocarditis or cardiovascular collapse with extensive hemorrhage, c) pulmonary hemorrhage, often fatal, without the occurrence of jaundice, kidney disease or other bleeding.

Over the past year has been a frequent higher prevalence of leptospirosis with the observation of episodes of hemoptysis associated with pulmonary respiratory distress syndrome and death (Gill et al., 1992). The same authors, after review, mentioning that the death in Brazil is primarily linked with renal failure, 76.2% of cases, while 3.5% are related to pulmonary hemorrhage. In an outbreak of leptospirosis occurred in Nicaragua in 1995, 40% of fatal cases were associated with pulmonary hemorrhage (Trevejo et al. 1998).

The lung injury during inflammatory processes has been linked to excess stimulated cells in the lung, including alveolar macrophages, polymorphonuclear cells and production of reactive intermediates of oxygen and nitrogen, or other inflammatory mediators. The etiology of respiratory bleeding is unknown, however Nally et al. (2004) verified by immunofluorescence, the presence of immunoglobulins IgM, IgG, IgA and complement factor C3 deposited along the alveolar basement membrane, thus suggesting the existence of autoimmune process associated with the immunopathogenesis of pulmonary hemorrhage observed in fatal cases of leptospirosis.

The involvement of toxins or toxic factors in the pathogenesis of leptospirosis has long been contemplated, since the absence of the microorganism at the site of tissue injury is a factor that strengthens this hypothesis (Knight et al., 1973). Vinh et al. (1986) extracted a glycoprotein (GLP) present in cell walls of a strain of serovar *L. interrogans* copenhageni that had cytotoxic effect against the fibroblasts of mice (L929). Later it was demonstrated that GLP induced the production of cytokines, TNF- $\alpha$  and IL-10 by peripheral blood monocytes of healthy volunteers (Diament, et al. 2002). The mechanism by which leptospira activate the immune system has been the main focus of many studies, especially regarding the involvement of cytokines (Yang et al., 2000, Maragoni et al., 2004). High levels of TNF- $\alpha$  in serum of patients with leptospirosis were observed by Estavoyer et al. (1991) and Tajiki and Solomon (1996), and in the culture supernatant of macrophages from mice genetically selected Marinho et al. (2005, 2006) who also associated the severity of infection. Vernel-Pauillac and Merien (2006), tested using the technique of quantitative real-time PCR, found elevated levels of inflammatory cytokines, IL-4 and IL-10 in the late stage of infection with *Leptospira interrogans* icterohaemorrhagiae establishing a profile of involvement of cytokines in type 1 cellular immunity. It is believed that the naturally acquired immunity may result from humoral-mediated response (Adler and Faine, 1977, Adler et al., 1980), which in turn serovar-specific (Adler and Faine, 1977). The development of the humoral response is related to activation-dependent mechanism Receptor Tool-like type 2 (TLR-2), via the innate immune system that would be activated by LPS leptospiral (Werts et al., 2001). Klimpel et al. (2003), demonstrated that *Leptospira* can activate T cell proliferation and  $\gamma$ - $\delta$   $\alpha$ - $\beta$ , suggesting therefore the involvement of these cell populations in host defense or in the pathology of leptospirosis.

The humoral immune response, compared to the exposure to leptospires, is demonstrated by serological tests, where there is an increased activity of immunoglobulins IgG and IgM after natural infection or immunization. In men there was a greater prevalence of immunoglobulin class IgM (Adler et al, 1980; Petchclai et al. 1991; and Ribeiro et al, 1992), in all the patients, but not all produce agglutinins IgG, after infection. The cause of this individual variation is unknown, however it is observed more frequently in patients afflicted with Weill syndrome (Adler et al., 1980).

Other factors such as hemolysins (Lee et al., 2002), hyaluronidases, phospholipases and glycoproteins (Yang et al. 2001; Sitprija et al., 1980) are implicated in the pathogenesis of leptospirosis. The spiral movement itself would facilitate adherence to renal tubular

epithelial cells by lipoproteins wall as Lip41, Lip 36 and LPS (Dobrin et al. 1995). Pathogenic *Leptospira* present several surface proteins that mediate the interactions between the bacteria with the extracellular matrix and host cells, proteins that facilitate adhesion and invasion of host cell proteins that allow motility in connective tissue, secreted proteins such as enzymes degradation (collagenase, hemolysins, phospholipids and sphingomyelin) and pore-forming proteins. No leptospires in protein secretion of type III and IV, as used by Gram-negative bacteria for introducing proteins into host cells (Ko et al, 2009). The cell apoptosis, or programmed cell death plays an important role in modulating the pathogenesis of many infectious processes. The occurrence of apoptosis in the mechanism of tissue injury is a well known event in renal disease processes (Wong et al., 2001). Cell death by an apoptotic process would regulate the number of cells during induction and resolution of renal injury (Savill, 1994, Ortiz et al., 2002). *Leptospira interrogans* has been considered as an agent inductor of apoptosis of macrophages (Merian et al. 1997) and guinea pig hepatocytes (Merien et al., 1998) However, the mechanism responsible for cell death remains desconhecido. Jin (2009) showed that *L. interrogans* induces apoptosis in cell line J774A.1 via dependent on caspase 3 and 8. Caspases (*cysteine-dependent aspartate-specific proteases*) signal for apoptosis and cleave substrates leading to condensation and nuclear fragmentation, externalization of membrane phospholipids that will signal to these cells were engulfed by macrophages (Nicholson et al. 1997, Boatright et al ., 2003).

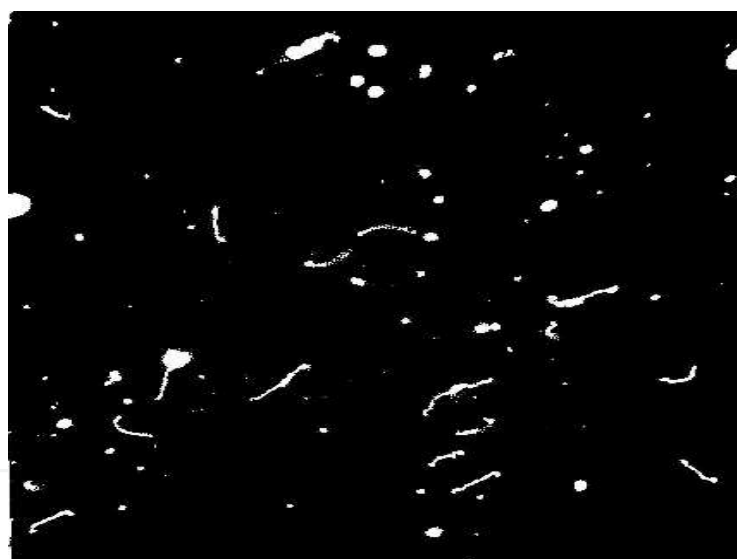


Fig. 1. *Leptospira* spp in dark field microscopy100 increased Microbiology Laboratory, Unesp Brazil Dr. Márcia Marinho /2011

The actual mechanisms that involve the immune response to leptospiral remain controversial and complex. The importance of understanding better the complexity of the mechanisms involved in leptospirosis, such as the virulence of the serovar, the immunocompetence of the host to the agent, the form of clinical manifestations presented, represents a major paradigm in the understanding of infectious diseases and factors related to imunofisiologia leptospirosis, foster the development of preventive and therapeutic strategies aimed at curbing the infection, contributing directly to reducing the prevalence of the disease. New studies are needed to determine the role of apoptose cell in the immunopathogenesis of leptospirosis and the mechanisms that underlie and induce



infection. Understanding these mechanisms and kinetics of their occurrence in the future will develop treatment strategies

## 2. References

- Acha, P.N., Syfres, B. Leptospiroses. Publ. Cient. Org. Panam. De La Salud, 503, p.112-120, 1989.
- Adler, B., De La Peña Moctezuma, A., 2010. *Leptospira* and leptospirosis. Vet. Microbiol. 140, 2010 287-296.
- Adler, B., Faine, S. Host immunological mechanisms in the resistance of mice to leptospiral infections. Infect Immun. v.17, p.67-72, 1977.
- Adler, B., Murphy, K.H., Locarnini, S.A., Faine, S. Detection of specific anti-leptospiral immunoglobulin M and immunoglobulin G in human serum by solid phase enzyme-linked immunosorbent assay. J Clin Microbiol v.11, p.452-457, 1980.
- Alves, C.J., Vasconcellos, S.A., Morais Z.M., Andrade J.S.L., Clementino, I. J., Azevedo, S.S., Santos, F.A. Avaliação dos níveis de aglutininas antileptospiras em gatos no município de Patos - PB Clínica Veterinária, v.46, p.48-54, 2003.
- André - Fontaine, G., Caniere, J.P. Données actuelles sur la leptospirose des animaux d'élevage. NOTE I. Étiologie, Symptômes et épidémiologie. Rev. Med. Vet., v. 136, p.627-637, 1985.
- Ashford, D. A., Kaiser, R.M., Spiegel, R.A., Perkins, B.A., Weyant R.S., Bragg, S.L., Plikavtis, B., Jarquin, C., Reys, De J.H.L., Amador, I.J. Asymptomatic infection and risk factors for leptospirosis in Nicaragua. Am. J. Trop. Med. Hyg v.63, p.249, 2000.
- Badke M. R. T Leptospirose 2001 Disponível em [www.cnpsa.embrapa.br/abrasesc/pdf/Memorias2001/1\_manoelrenato.pdf] Acesso em 13 /10 /2007.
- Bercovich, Z., Taaijk E., Kokhout, B.A. Evaluation of an ELISA for the diagnosis of experimentally induced and naturally occurring *Leptospira hardjo* infections cattle. Vet. Microbiol v. 21, p. 255-262, 1989.
- Berman, S.J.; Tsai, C.C.; Holmes, K.; Fresh, J.W.; Watten, R.H. Sporadic anicteric leptospirosis in South Vietnam. A study in 150 patients. Am. Intern. Med v. 79, p.167, 1973.
- Bharti, A.R., Nally Je, Ricaldi Jn, Matthias Ma, Diaz Mm, Lovett M, Lovett Pn, Gilman Rh, Willig Mr, Gotuzzo E, Vinetz Jm. Leptospirosis: a zoonotic disease of global importance Lancet Infect Dis v.3, p.757-771, 2003.
- Boatright KM, Salvesen GS. Mechanisms of caspase activation. Curr Opin Cell Biol. 2003;15:725-31.
- Bohl, E.H., Ferguson, L.C. Leptospirosis in domestic animals. J. Am. Vet. Med. Assoc v.121, p.421-423, 1952.
- Brasil. Ministério Da Saúde. Secretaria Nacional de Ações Básicas de Saúde Manual de controle da Leptospirose. Ministério da Saúde. Divisão Nacional de Zoonoses - Brasília: Centro de Documentação do Ministério da Saúde, 2002. 726p. (Série A: Normas e manuais técnicos).
- Cordeiro, F., Sulzer, C.R., Ramos, A.A. *Leptospira interrogans* in several wildlife species in Southeast, Brazil. Pesquisa Agropecuária Brasileira, Série Veterinária, v. 1, p.19-29, 1981.

- Diament, D., Karina M., Brunialti, C., Romero E.C., Kallas E.G., Salomao R. Peripheral blood mononuclear cell activation induced by *Leptospira interrogans* glycoliprotein. *Infection and Immun* v.70, p.1677-1687, 2002.
- Dobrina A., Nardon E., Vecicle E., Cinco M. & Patriarca P. 1995. *Leptospira* Icterohaemorrhagiae and *Leptospira peptideoglicans* induce endothelial cell adhesiveness for polymorphonuclear leukocytes. *Infect. Immun.* 63:2995-2999.
- Estavouyer, J.M.; Rcadot, E.; Couetdic, G.; Lerroy, J.; Grosperin, L. Tumor necrosis factor in patients with leptospirosis [letter]. *Rev. Infect. Dis* v.13 p.1245-1246, 1991.
- Faber, N.C., Crawford, M., Lefebvre, R.B., Buyukmihci, N.C., Madigan, J.E., Willits, N.H. Detection of *Leptospira* spp. In the aqueous humor of horses with naturally acquired recurrent uveitis *J. Clin. Microbiol* v.38, p.2731-2733, 2000.
- Giles, N., Hataway, S.C., Steven, A.E. Isolation of *Leptospira interrogans* serovar hardjo from a viable premature calf. *Vet. Rec* v. 113, p.153-154, 1993.
- Gonçalves, A.J, De Carvalho, M., Guedes, J.B.S, Rozembaum, R., Riera, A.R.M. Hemoptise e síndrome de angustia respiratória do adulto como causas da morte na leptospirose: mudanças de padrões clínicos e anatomopatológicos. *Rev Bras Med Trop* v.25, p.261. 1992.
- Greene, C. E.; Miller, M. A.; Brown, C. A. Leptospirosis. In: *Infectious Diseases of the Dog and Cat*. 2 ed. W. B. Saunders, Philadelphia, 1998. p. 273-281.
- Hagiwara, M. K.; Santa Rosa, C. A. Leptospirose canina em São Paulo. *Arq Inst Biol São Paulo*. v. 42, p. 111-118, 1975.
- Higgins, R.J.; Harbourne, J.F.; Little, T.W.A.; Stevens, A.E. Mastitis and abortion in dairy cattle associated with *Leptospira* serotype *hardjo*. *Vet. Rec* v.107, p. 307-10, 1980.
- Hill, M.K, Sanders, C.V. Leptospiral pneumonia. *Semin Respir Infect* v.12, p.44-49. 1997.
- Huttner, M.D., Pereira, H.C.P., Tanaka, R.M. Pneumonia por Leptospirose *J Pneumol* v.28, p.229-232, 2002
- Jezior, M. R. Leptospirosis. 2005 Disponível em [URL: <http://www.emedicine.com/med/topic1283.htm>] Acesso em 28 de abril de 2006
- Jin D. (2009) *Leptospira interrogans* induces apoptosis in macrophages via caspase-8- and caspase-3-dependent pathways. *Inf Immun* 77:799
- Jungherr, W. Bovine Leptospirosis. *J. Am. Vet. Med. Assoc* v. 105, p.276-281, 1944.
- Kemenes, F., Surjan, J., Kasza, L. Studies on equine leptospirosis with emphasis on eye-lesions (equine periodic ophthalmia) *Ann. Immunol. Hung.* v.24, p.345-355, 1985.
- Klimpel G.R., Mathias M.A., Vinetz, J. *Leptospira interrogans* activation of human peripheral blood mononuclear cells: preferential expansion of TCR gamma delta + cells vs TCR alpha beta + T cells *J. Immunol.* v. 171 p.1447-1455, 2003.
- Knight, L.L., Miller, N.G., White, R.J. Cytotoxic factor in the blood and plasma of animals during Leptospirosis *Infect. Immunity* v.8 p.401-405, 1973.
- Ko, 2009 Leptospirosis: a zoonotic disease of global importance. *Lancet Infect. Dis.* 3, 757-
- Ko, A. I. M., Reis, G., Dourado, C.M.R., Johnson, W.D., Rielly, L. W. Urban Epidemic of severe leptospirosis in Brazil. *Lancet* v. 354, p.820, 1999.
- Kobayashi, Y. Clinical observation and treatment of leptospirosis. *J Infect Chemother.* v. 7 p. 59-68, 2001.
- Langoni, H., Cabral, K.G., Kronfly, C.S. Pesquisa de aglutininas anti-leptospíricas em gatos *Clínica Veterinária* n.17, p.24-6, 1998.

- Lee, S.H.; Kim, S.; Park, S.C.; Kim, M. J., Cytotoxic activities of *Leptospira interrogans* hemolysin SphH as a pore-forming protein on mammalian cells. *Infect. Immun.*, v. 70, no. 1, p. 315-322, 2002.
- Levett, P.N. *Leptospirosis Clin. Microbiol* v. 14, p.296, 2001.
- Macedo, N.A. Influência da via de inoculação sobre o estabelecimento e a evolução da leptospirose em hamster (*Mesocricetus auratus*) experimentalmente infectados com *L. interrogans* sorovar Pomona. São Paulo, 1991, 45 p. Dissertação (Mestrado) – Faculdade de Medicina Veterinária e Zootecnia, Universidade de São Paulo.
- Marangoni, A. R. Aldini, V., Sambri, L., Giacani, K., Di Leo, Cevenini R. Production of tumor necrosis factor alpha by *Treponema pallidum*, *Borrelia burgdorferi*, s.l., and *Leptospira interrogans* in isolated rat Kupffer cells. *FEMS Immunol. Med. Microbiol* v.40, p.187-191, 2004.
- Marinho, M., Langoni, H., Oliveira S.L., Lima V.M.F., Peiró J.R., Perri, S.H.V., Carreira, R. Role of cytokines, NO, and H<sub>2</sub>O<sub>2</sub> on the immunopathology of Leptospirosis in genetically selected mice. *J. Venom. Anim. Toxins incl. Trop. Dis.* v. 11, p.198-212, 2005.
- Marinho, M., Silva, C., Lima, V.M.F, Peiró, J.R., Perri, S.H.V. Cytokine and antibody production during murine leptospirosis. *J. Venom. Anim. Toxins incl. Trop. Dis.* v. 12, p.595-603, 2006.
- Masuzawa, T.; Suzuki, R.; Yanagihara, Y. Comparison of protective effects with tetravalent glycolipid antigens and whole cell inactivated vaccine in experimental infection of *Leptospira*. *Microbiol Immunol* v. 35, p. 199-208, 1991.
- McBried, A.J.A, ATHANAZIO, D.A, REIS, M. G., KO A.I. Leptospirosis *Curr Opin Infect Dis* v.18 p. 595-603, 2005
- McDonough, P. L. Leptospirosis in dogs – Current status. In: CARMICHAEL, L. Recent Advances in Canine Infectious Diseases. International Veterinary Information Service ([www.ivis.org](http://www.ivis.org)). Ithaca. 2001. Último acesso em julho 2003.
- Merien, F., Baranton, G., Perolat, P. (1997). Invasion of Vero cells and induction of apoptosis in macrophages by pathogenic *Leptospira interrogans* are correlated with virulence. *Infection and Immunity* 65, 729-738
- Merien, F., Truccolo, J, Rougier Y (1998). In vivo apoptosis of hepatocytes in guinea pigs infected with *Leptospira interrogans* serovar Icterohaemorrhagiae. *FEMS Microb Letters*, 169:95-102.
- Mosier, J.E. Leptospirosis of pet animals. *Vet. Med* v. 52, p. 537-539, 1957.
- Nally, J.E., Chantranuwat, C., Wu, X-Yang, Fishbein, M.C., Pereira, M.M., Silva, J. J. Pereira, Blanco D.R., Lovett, M.A. Alveolar septal deposition of immunoglobulin and complement parallels pulmonary hemorrhage in guinea pig model of severe pulmonary leptospirosis. *Am J Pathol.* v.164 p.1115-1127. 2004.
- Nicholson Dw, Thornberry NA. Caspases: killer proteases. *Trends Biochem Sci.* 1997;22:299-306.
- Ortiz A, Justo P, Catalán Mp (2002). Apoptotic cell death in renal injury: the rationale for intervention. *Curr Drug Targ- Imm Endoc Metabo Disor* 2: 181-192.
- Pearson, J.K.L., Mackie, D.P., Ellis, W.A. Milk drop syndrome resulting from *Leptospira Hardjo*. *Vet. Rec* v.107, p. 135-37, 1980.
- Petchclai, B., Hiranra, S. S., Potha, U. Gold immunoblot analysis of IgM-specific antibody in the diagnosis of human leptospirosis. *Am J Trop Med Hyg* v. 45, p.672-675, 1991.



- Ribeiro, A.F. Leptospirose, avaliação de fatores prognósticos da doença, município de São Paulo Boletim Epidemiológico Paulista BEPA, v.3, n.28, 2006. Disponível em: [http://www.cve.saude.sp.gov.br/gencia/bepa28\_lepto.htm]. Acesso em: 7 jun.2007.
- Ribeiro, M.A., Sakata, E.E., Silva, M.V., Camargo, E.D., Vaz, A.J. De Brito, T. Antigens involved in the human antibody response to natural infections with *Leptospira interrogans* serovar Copenhageni J Trop Med Hyg v.95 p.239-245, 1992.
- Savill J (1994) Apoptosis and kidney. J Am Soc Nephrol 5:12-21.
- Seijo, A, Coto H., San Juan J., Videla J., Deodato, B., Cernigoi B et al. Lethal leptospirosis pulmonary hemorrhage: Na emerging disease in Buenos Aires, Argentina Emerg Infect Dis v.8 p.491-499, 2002.
- Shapiro, J.L., Prescott, J.F., Equine abortions in eastern Ontario due to leptospirosis. Can Vet J. v.40 p. 350-351, 1999.
- Sitprija V, Pipatanagul V, Mertowidjojo K (1980) Pathogenesis of renal disease in leptospirosis: clinical and experimental studies. Kidney Intern, 17:827-6.
- Sonrier, C.; Branger, C.; Michel, V.; Ruvoënclouet, N.; Ganière, J. P.; André-Fontaine, G. Evidence of cross-protection within *Leptospira interrogans* in an experimental model. Vaccine. v. 19, p. 86-94, 2001.
- Tajiki, M.H., Salomao, R. Association of plasma levels of tumor necrosis factor  $\alpha$  with severity of diseases and mortality among patients with leptospirosis. CID v.23 p.1177-1178, 1996.
- Trevejo, R.T., Rigau-Perz, J.G., Ashford D.A., Zaki, S.R., Shieh, W.J., Peters, C.U.J. et al. Epidemic Leptospirosis associated with pulmonary hemorrhage-Nicaragua, 1995 J infect Dis v.178, p.1457-1463, 1998.
- Venugopal, K. Ratnam, S. Lesions and immune responses produced in hamsters and guinea pigs inoculated with some strains of *Leptospira* Indian J. Exp. Biol., v.28, p.1075-1077, 1990.
- Vernel-Pauillac, F; Merien F. Proinflammatory and immunomodulatory cytokine mRNA Time Course Profiles in Hamsters Infected with a virulent Variant of *Leptospira interrogans* Infect. Immun v.6 p.4172-4179, 2006.
- Vinh, T., Adler, B., Faine, S. Glycolipoprotein Cytotoxin from *Leptospira interrogans* serovar copenhageni J. Gen. Microb. v. 132 p.111-123, 1986.
- Werts, C.R., I., Tapping, J.C., Mathinson, T. H., Chuang, V., Kravchenko, I. Saint Giron, D.A., Haake, P.J., Godowski, F., Hayashi, A., Ozinsky, D.M., Underhill, C.J., Kirsching, H., Wagner, A. Aderem, P. S., Tobias A.N.D., Ulevitch, R.J. Leptospiral lipopolysaccharid activates cells through a TLR-2 dependent mechanism. Nat. Immunol. v. 2 p.346-452, 2001.
- Wong Vy, Keller Pm, Nuttall Me (2001). Role of caspases in human renal proximal tubular epithelial cell apoptosis. Eur J Pharmacol, 433:135-140.
- Yang Cw, Wu Ms, Pan Mj. (2001) Leptospirosis renal disease, Nephrol Dial Transplant, 16 (Suppl 5):73-77.
- Yang, C.W., Wu, M.S., Pan, M.J., Hong, J.J., Yu, C.C., Vandewalle, A., Huang, C.C. *Leptospira* outer membrane protein activates NF-kappa B and downstream genes expressed in medullary thick ascending limb cells. J. Am. Soc. Nephrol. v.11, p.2017-2026, 2000.



### **Current Topics in Tropical Medicine**

Edited by Dr. Alfonso Rodriguez-Morales

ISBN 978-953-51-0274-8

Hard cover, 564 pages

**Publisher** InTech

**Published online** 16, March, 2012

**Published in print edition** March, 2012

Tropical Medicine has emerged and remained as an important discipline for the study of diseases endemic in the tropic, particularly those of infectious etiology. Emergence and reemergence of many tropical pathologies have recently aroused the interest of many fields of the study of tropical medicine, even including new infectious agents. Then evidence-based information in the field and regular updates are necessary. Current Topics in Tropical Medicine presents an updated information on multiple diseases and conditions of interest in the field. It includes pathologies caused by bacteria, viruses and parasites, protozoans and helminths, as well as tropical non-infectious conditions. Many of them are considering not only epidemiological aspects, but also diagnostic, therapeutic, preventive, social, genetic, bioinformatic and molecular ones. With participation of authors from various countries, many from proper endemic areas, this book has a wide geographical perspective. Finally, all of these characteristics, make an excellent update on many aspects of tropical medicine in the world.

#### **How to reference**

In order to correctly reference this scholarly work, feel free to copy and paste the following:

Marcia Marinho (2012). Leptospirosis: Epidemiologic Factors, Pathophysiological and Immunopathogenic, Current Topics in Tropical Medicine, Dr. Alfonso Rodriguez-Morales (Ed.), ISBN: 978-953-51-0274-8, InTech, Available from: <http://www.intechopen.com/books/current-topics-in-tropical-medicine/leptospirosis-epidemiologic-factors-pathophysiological-and-immunopathogenic>

**INTECH**  
open science | open minds

#### **InTech Europe**

University Campus STeP Ri  
Slavka Krautzeka 83/A  
51000 Rijeka, Croatia  
Phone: +385 (51) 770 447  
Fax: +385 (51) 686 166  
[www.intechopen.com](http://www.intechopen.com)

#### **InTech China**

Unit 405, Office Block, Hotel Equatorial Shanghai  
No.65, Yan An Road (West), Shanghai, 200040, China  
中国上海市延安西路65号上海国际贵都大饭店办公楼405单元  
Phone: +86-21-62489820  
Fax: +86-21-62489821

© 2012 The Author(s). Licensee IntechOpen. This is an open access article distributed under the terms of the [Creative Commons Attribution 3.0 License](https://creativecommons.org/licenses/by/3.0/), which permits unrestricted use, distribution, and reproduction in any medium, provided the original work is properly cited.

IntechOpen

IntechOpen