

# We are IntechOpen, the world's leading publisher of Open Access books Built by scientists, for scientists

6,900

Open access books available

186,000

International authors and editors

200M

Downloads

Our authors are among the

154

Countries delivered to

TOP 1%

most cited scientists

12.2%

Contributors from top 500 universities



WEB OF SCIENCE™

Selection of our books indexed in the Book Citation Index  
in Web of Science™ Core Collection (BKCI)

Interested in publishing with us?  
Contact [book.department@intechopen.com](mailto:book.department@intechopen.com)

Numbers displayed above are based on latest data collected.  
For more information visit [www.intechopen.com](http://www.intechopen.com)



# Conduit Selection for Improved Outcomes in Coronary Artery Bypass Surgery

Zane B. Atkins<sup>1,2,\*</sup>, Kristine V. Owen<sup>3</sup> and Walter G. Wolfe<sup>1,2</sup>

<sup>1</sup>*Department of Surgery, Veterans Affairs Medical Center Durham, NC*

<sup>2</sup>*Department of Surgery, Duke University Hospital Durham, NC*

<sup>3</sup>*Department of Medicine, Charles George Veterans Affairs Medical Center Asheville, NC  
USA*

## 1. Introduction

Coronary artery bypass grafting (CABG) is one of the most studied operations in medical history, but many of the data forming the basis for clinical decisions in patients with coronary artery disease (CAD) were derived in the 1970s and 1980s, when the procedure and medical therapy were in their relative infancy. Advances in medical therapy (beta adrenergic blockers, thienopyridines, statins, and others), percutaneous coronary interventions (PCI), and surgical techniques have changed the decision making for patients with CAD. In addition, patient populations referred for surgery have changed since the original studies documenting advantages of CABG over other forms of therapy.

Since percutaneous transluminal coronary angioplasty (PTCA) was introduced, significant advances have been made in the percutaneous treatment of CAD. When drug-eluting stents (DES) were introduced in the early 2000s, many predicted the demise of CABG surgery. Enthusiasm for percutaneous treatment of CAD has most recently led to promoting PCI for unprotected left main coronary artery (LMCA) disease, an anatomical state typically reserved for CABG [1-3]. Percutaneous options have indelibly changed the face of CABG surgery and raise questions concerning the “gold standard” of care in coronary revascularization. For instance, recent reports document that patients referred for redo coronary artery surgery have declined, presumably due to the increased enthusiasm, possibly among surgeons themselves, for PCI in this setting [4]. Despite this, few studies have actually compared PCI with CABG. Two notable studies are recently available, both demonstrating advantages for CABG over PCI for left main CAD and/or three-vessel CAD [5, 6].

Concurrently, details pertaining to short-term outcomes of CABG have been questioned. For example, historical saphenous vein graft (SVG) patencies were reported as approximately 50% at 10 years [7]. However, several studies published in the mid-2000s indicate that early-term patencies of aorto-coronary SVG conduits are not as good as the historical figures that are still often quoted [8-10]. While the long-term patency and performance of the left internal mammary artery (LIMA) has not been questioned, the recent poor performance of

---

\* Corresponding Author

SVG, coupled with increasing enthusiasm and demand for DES has lead to the emergence of “hybrid” coronary revascularization, typically consisting of LIMA-to-LAD and PCI of other coronary lesions. [11].

Coronary artery surgery itself has undergone several iterative changes recently. In the 1990s, great enthusiasm existed for the “mid-CAB” (minimally-invasive direct coronary artery bypass) procedure, an approach integral to “hybrid” revascularizations and primarily involving a small left anterior thoracotomy to harvest the LIMA and expose the left anterior descending [LAD] coronary artery. However, outside of the context of hybrid procedures, mid-CAB has had little widespread applicability, particularly since most patients referred for coronary surgery have multivessel disease. Introduction of mid-CAB procedures help usher in the era of off-pump CABG, which was heralded as an approach to reduce the risks associated with on-pump CABG, particularly myocardial dysfunction and cerebrovascular complications [12]. Finally, technology has introduced minimally invasive platforms for performing multi-vessel CABG, most recently the introduction of “totally endoscopic” and robotic CABG surgery [13]. However, it should be noted that these “improved techniques” continue to utilize the same conduit selection and comparative trials with objective evidence are lacking. Since minimally invasive strategies for CABG do not routinely incorporate changes to the operation known to improve short- and long-term results, there appears little reason to suspect that graft patency rates will be improved by less invasive procedures. Rather, one could argue that these alterations in approach to CABG are primarily based on industry involvement, public demands for less invasive procedures, and as marketing strategies by hospital systems.

*Are there alternatives to CABG, which could improve long-term outcomes for graft patency and the composite of major adverse coronary events (MACE) particularly when compared with PCI?* The answer is a resounding “yes,” and it is found in arterial conduits for coronary bypass. CABG with multiple arterial grafts have been shown to have improved graft patency, reduced need for reoperation or reintervention, and prolonged survival compared with patients undergoing CABG with one IMA and SVG [14-17]. For instance, Sabik et al reviewed a 27-year experience at the Cleveland Clinic with regard to need for reintervention after primary CABG and found that the extent of arterial grafting correlated with freedom from subsequent reintervention [18]. Specifically, patients who received two IMA grafts at initial surgery had approximately 10% risk for reintervention at 10 years; those with one IMA had 20% risk; and those with no IMA had approximately 30% risk for reintervention at 10 years [18].

However, the surgical community has not fully utilized these assets despite numerous, compelling data [19-23]. Jones succinctly summarized the decision point facing conventional, open surgery in the face of rapidly advancing technologies, particularly PCI, and the impact on referral trends for surgical intervention: “improve the long-term outcome, lessen resources used, or both.” [24]. Therefore, one important philosophic principle regarding use of multiple arterial conduits is that the focus is on the *long-term* results, not the short-term.

The purpose of this chapter is to review the data available for CABG with multiple arterial grafts including bilateral IMA use, radial artery, and other conduits. Finally, we will demonstrate the advantages of multiple arterial grafting and make the argument that this strategy yields superior long-term results compared to any strategy for coronary revascularization based on PCI or CABG with traditional conduit selection.

## 2. Percutaneous coronary interventions

PCI was introduced in 1977 and has undergone consistent improvements in technologies and approaches, offering a less invasive treatment modality for CAD [25]. With the introduction of DES in 2003, the percentage of CAD patients treated with PCI have increased consistently [26, 27]. However, recent studies evaluating long-term outcomes for DES have revealed increased morbidity and mortality secondary to late stent thrombosis [28-30]. While DES therapy has reduced need for target lesion reintervention [31, 32], there is a strict therapeutic requirement for dual anti-platelet therapy (DAPT). Current DAPT recommendations are for at least one year after DES therapy, but the ideal length of treatment still not yet known [33].

## 3. Comparing coronary bypass surgery and PCI

Shortly after the emergence of PCI as a reliable and durable therapy for CAD, comparisons between angioplasty and CABG were designed in order to determine the relative advantages of each modality. The BARI (Bypass Angioplasty Revascularization Investigation) trial compared balloon angioplasty with CABG in patients with multivessel CAD and severe angina or inducible coronary ischemia. After 5 and 10 years follow-up, no difference in long-term survival was demonstrated [34, 35]. Similar results were noted in other randomized trials of PTCA versus CABG [36, 37]. It was commonly noted in these trials that reintervention for recurrent angina symptoms was significantly more common for patients treated with an initial strategy of PTCA [BARI, RITA, GABI]. However, on subgroup analysis, survival advantage for CABG was demonstrated among diabetic patients in the BARI trial [35]. Finally, a meta-analysis of 13 randomized controlled trials comparing CABG with PTCA showed improved survival for CABG at 5-8 years in those with multivessel CAD and in diabetic patients [38].

Even as studies comparing PTCA with CABG were enrolling, bare-metal stents (BMS) were introduced, and trials to compare the new technology with CABG emerged. The randomized Stent or Surgery (SoS) trial compared multivessel CAD treatment by CABG or by PCI with BMS [39]. At a median follow-up of 2 years, these data showed reduced rates of coronary reintervention and significantly fewer deaths after CABG. Similar trials comparing CABG and PCI with BMS did not demonstrate a survival advantage for either therapy [40], although diabetic patients appeared to have improved survival after CABG in the Arterial Revascularization Therapies Study (ARTS 1) [41].

The US Food and Drug Administration approved DES therapy in 2003, stimulating another round of comparisons between CABG and PCI with the newer technology. Hannan et al reviewed risk-adjusted data from the NY State Dept of Health comparing patients who underwent CABG or PCI with DES for multivessel CAD over a 15-month period shortly after DES approval [5]. At a mean follow-up of 19 months, CABG patients experienced reduced hazard ratio for death, reduced mortality, reduced death/myocardial infarction composite, and less need for repeat revascularization [5]. However, the data were not acquired in the context of a randomized trial. Finally, the SYNTAX trial, a prospective randomized trial conducted across Europe and the US, compared PCI with DES and CABG in patients with 3-vessel CAD, left main CAD, or both [6]. The primary outcomes were major adverse cardiovascular or cerebrovascular events, and follow-up was provided for 12 months after intervention. The SYNTAX data demonstrated increased rates of MACE in the

PCI group, primarily related to the increased need for repeat intervention. Death and post-procedure MI were not significantly different between the two groups, but there was an increased stroke rate in the CABG group compared with PCI, which is somewhat offset by the fact that surgical patients were not managed with aggressive antiplatelet therapy as compared to the PCI group, and many of the cerebrovascular events occurred outside of the perioperative period. More recently, three-year follow up SYNTAX data were reported confirming advantages of CABG over PCI with regard to MACE. Unlike 12-month data, however, composite safety endpoints were no longer different between the two groups, including a similar stroke rate [42]. The SYNTAX authors concluded that CABG remains the preferred therapy for 3-vessel or left main CAD but recommend longer follow up, as is planned for an additional two years [6].

Despite the favorable data for CABG emanating from carefully designed and conducted randomized trials, rates of CABG referral have decreased consistently since the introduction of PCI with stent technologies [43]. Preference for PCI appears driven by disparate interpretation of PCI-versus-CABG studies, by strong patient preference for less invasive procedures with presumed lower periprocedural risk, and by the promise for faster recovery. As a result, the percentage of patients referred for CABG with previous PCI has increased steadily [44] with higher acuity relative to patients without previous intervention [45]. Additionally, technical details of CABG in current surgical practices are considered more challenging compared with previous eras due to more diffuse CAD, subjectively smaller distal coronary targets, particularly among diabetic patients, and the high incidence of prior PCI [46]. Consequently, contemporary results for CABG following PCI are characterized by worse perioperative outcomes when compared with CABG patients without previous intervention. For example, higher rates of postoperative mortality, MACE, and other perioperative complications following CABG in both diabetic and nondiabetic patients have been observed [47-50]. More importantly, increased mid-term mortality in diabetic patients with prior PCI has been observed after CABG [50], and Rao et al demonstrated increased long-term mortality in patients with prior PCI who subsequently underwent CABG [51].

#### **4. Saphenous vein graft conduits**

Reversed saphenous vein grafts (RSVG) have been utilized for CABG since the procedure's inception [52] and remain an important graft conduit option in the present era and in numerous clinical scenarios [53, 54]. Historically, patency rates of RSVG aorto-coronary artery grafts have been observed to be approximately 50-60% at 10 years [7, 55]. However, as previously noted, recent RSVG patency data are less encouraging [8-10]. For example, the PREVENT-IV study evaluated 3,000 patients undergoing CABG with 1-year routine angiographic follow-up. At this early time point, 30% of RSVG conduits were occluded and over 45% had "failed," as defined by  $\geq 75\%$  stenosis [10]. Importantly, study patients with vein graft failure had significantly increased rates of perioperative complications including MI, death or MI, or MACE relative to the cohort without vein graft complications [10]. Similar results have been noted elsewhere [56-59]. Additionally, surprisingly poor early-to-mid-term RSVG patency rates have been reported elsewhere. The Portland Endoscopic SVG Harvest Trial demonstrated 69% [8], patency by angiography at 6-months, while the PRAGUE 4 trial showed one-year RSVG patency of 52.5% [9]. The potential impact of poor vein graft performance cannot be overstated as RSVG failure is significant contributor to



redo coronary surgery [60]. In addition, early vein graft failure is associated with increased perioperative myocardial infarction [10, 61], which consequently affects survival after CABG [58, 59].

Several potential explanations exist for the recently chronicled poor performance of RSVG as aorto-coronary conduits including early technical errors, endothelial injury, and early thrombosis, which may be related to insufficient biologic reaction to aspirin or inadequate antiplatelet effect of aspirin [62-64]. One important contributor to poor RSVG conduit performance, receiving significant recent attention, may be the practice of harvesting the conduit endoscopically (EVH). This technique was introduced and popularized in the 1990s and has been widely adopted due to increased incisional comfort and patient satisfaction, and decreased wound complications compared to open vein harvesting [65, 66] such that at least 70% of CABG patients undergo EVH based on recent Society of Thoracic Surgeons Database reporting [67]. However, EVH has been associated with increased endothelial injury, which may have significant negative consequences including graft patency and possibly long-term survival [68, 69]. Desai et al recently demonstrated using optical coherence tomography that EVH operators had a steep learning curve with regard to subtle RSVG injuries and that vein grafts with four or more intimal or medial dissections showed significantly worse early patency rates than those with fewer intimal injuries (67% vs. 96%) [70].

In contrast, when RSVGs are harvested using a “no touch” technique, better patency results have been noted. The “no touch” method avoids vein stripping, taking surrounding tissue, and avoids over-distending the vein conduit as it is being prepared for coronary anastomosis [71]. This has also been shown recently to preserve the venous vasa vasorum [72]. Perhaps this helps to explain differences in contemporary SVG patency rates versus those reported historically, which were always done by an open surgical technique. Other predictors of improved vein patency include grafting to the LAD coronary artery versus other target sites, smaller venous conduit size, and larger diameter target coronary artery. In contrast, young age and low EF reduced long-term patency [60]. The type of distal anastomosis (sequential, y- or t-grafts, or other composite grafts) did not affect long-term patency [60]. Based on these data, some suggest SVG from the calf/lower leg since size and possible thickness of the vein is better [60]. Additionally, EVH is more difficult to perform on the lower leg; therefore, programs committed to EVH likely neglect this potentially advantageous conduit.

Current surgical patient cohorts have also been implicated in reduced vein graft patencies. For example, it is generally accepted that contemporary patients referred for surgery are older and more medically complex [73]. For example, many patients referred for CABG are diabetic, a condition that is notorious for more complicated and diffuse CAD [46, 74]. In addition, it has been proposed that venous grafts in elderly may be of inferior quality relative to younger patients [75].

## 5. General advantages of arterial grafting

Several advantages to arterial grafting have been demonstrated relative to CABG without arterial grafts. Most notably, the LIMA-LAD graft has been shown to be an independent predictor of survival after CABG when compared with patients not receiving LIMA-LAD [76]. In addition, using more than one IMA graft reduces the need for subsequent reintervention and prolongs survival relative to patients receiving only one arterial grafts

[15, 17]. Similarly, Guru et al evaluated the potential benefit of multiple arterial grafting in over 53,000 patients undergoing primary CABG between 1991 and 2001. After propensity matching, patients receiving  $\geq 2$  arterial grafts had decreased rates of cardiac readmission and reduced incidence of the composite of cardiac readmission, death, and repeat revascularization relative to those with  $\leq$  one arterial grafts [23]. Furthermore, patients receiving  $\geq 2$  arterial grafts had improved survival compared with patients receiving only one arterial graft [23]. Similar findings were reported by Nasso, et al, who found no differences at 2 years between groups receiving RA, in-situ RIMA, or free RIMA as the 2<sup>nd</sup> arterial graft, although each of these groups was superior to patients receiving only one arterial graft (LIMA-LAD) with respect to cardiac event-free survival [77]. Zacharias et al also demonstrated advantages of RA grafting as a 2<sup>nd</sup> arterial conduit on long-term survival when compared to RSVG conduits [14].

In addition, multiple arterial grafts and their arrangements in all coronary distributions have been proven superior to venous grafts with regard to long term patency regardless of the anatomic details of the native coronary and distal anastomosis [55]. These results are particularly applicable in the context of recurrent angina [16, 55, 78]. Finally, perhaps one of the best recent demonstrations of the advantages of arterial grafting over RSVG conduits was provided by Gaudino et al, who studied 60 CAD patients who had previously undergone PCI and developed in-stent restenosis. After undergoing CABG, patients receiving IMA and RA grafts had patency rates of 90% while those undergoing RSVG had patency rates of 50% at a mean follow-up of 52 months [79].

### 5.1 Total arterial revascularization

Since SVG conduits inevitably fail, particularly late [62], there has been increased enthusiasm for total arterial revascularization for CABG. Total arterial revascularization may obviate the concerns of vein graft failure and has been shown to have good short-term results [80]. However, little evidence is available to suggest that outcomes are improved with “all-arterial” grafting [81]. Zacharias et al have recently demonstrated that patients with multi-vessel CAD undergoing all-arterial grafting had improved 12-year survival compared with matched patients who underwent standard CABG with LIMA-LAD and RSVG to other distal targets [82]. Furthermore, complete coronary revascularization and use of all-arterial grafting strategy was associated with improved 12-year survival [82, Figure].

It has been estimated that all-arterial grafting is possible in 90% of patients using various conduits and their configurations [55], and even patients with advanced age have been shown to benefit from all-arterial revascularization strategies in terms of freedom from recurrent coronary events and improved graft patency [83].

## 6. Bilateral internal mammary artery conduits

In the 1980s, the LIMA-to-LAD graft was shown to be an independent predictor of improved short- and long-term results when used as a conduit for CABG compared to RSVG-only grafting [76]. Unequivocal advantages of the LIMA-LAD graft include prolonged survival relative to use of RSVG to LAD, reduced rates of recurrent angina, reduced postoperative MI and other ischemic events, and decreased need for coronary reintervention [76, 84]. The superiority of the LIMA in comparison to other CABG conduits

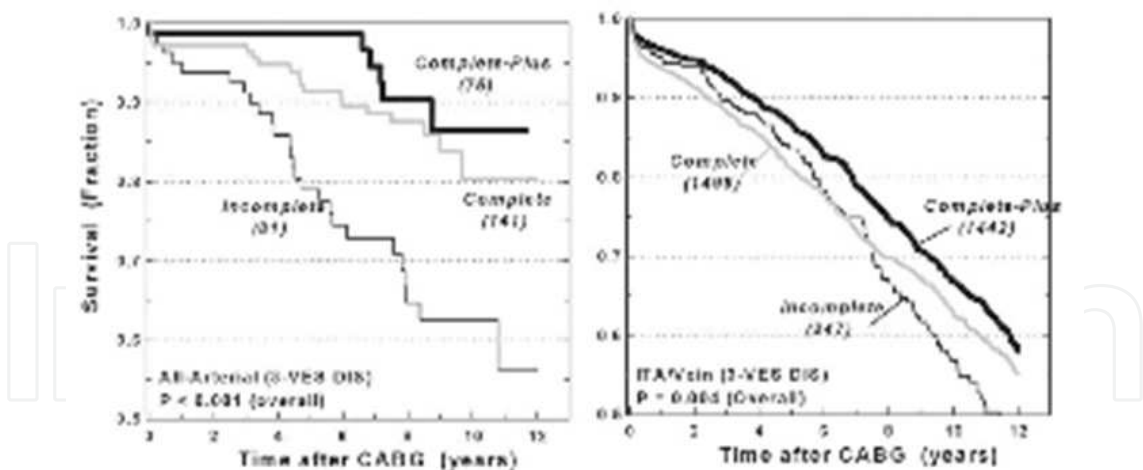


Fig. 1. Effects of completeness of revascularization on 12-year old Kaplan-Meier survival in triple-vessel disease (3-Ves Dis) patients. (Left) All-arterial patients. (Right) Internal thoracic artery/saphenous vein (ITA/Vein) patients. Incomplete - completeness of revascularization index (CRI) less than 1, or 2 grafts; complete CRI equal to 1, or 3 grafts; complete plus - CRI greater than 1, or 4 or more grafts. All p values by log-rank (Mantel-Cox) test. (CABG - coronary artery bypass graft surgery.)

may be related to its unique freedom from arteriosclerosis and due to the rich run-off bed provided by the LAD coronary and its branches [85]. Since there is no basis for suggesting or concluding that the biological and mechanical properties of the right IMA are different from the LIMA, successes with the LIMA have prompted investigation of the potential benefits of bilateral IMA (BIMA) grafting.

The original description of BIMA for CABG is credited to Kay in 1969 [86]. Since then, multiple centers including our own have investigated the impact of BIMA grafting on long-term results of CABG. Advantages of BIMA have been somewhat difficult to prove definitively without randomized controlled trials in this area, which have not been conducted secondary to cost concerns and administrative requirements associated with studies inherently requiring significant longitudinal follow-up [87]. Instead, investigation and documentation of BIMA benefits have relied on evaluating institutionally maintained observational databases to show differences between the “treatment group” and the “control group” by way of propensity matching [87]. Analysis of these data show improved long-term results for patients receiving BIMA grafting as compared with single IMA grafting. However, survival curves do not separate until several years postoperatively, which has been a consistent finding [15, 88, 89; Figure]. The demonstrated clinical advantages of BIMA grafting strategies include prolonged survival and reduced need for coronary reintervention on the basis of recurrent myocardial ischemia, including freedom from the need for coronary reintervention [15, 88, 90] which hold true for women as well as for men, where it has been demonstrated that use of BIMA had 3-fold improved cardiac-related survival compared with patients who did not receive an IMA graft [91].

Reported rates of BIMA use in CABG range from 4.0% to nearly 50% depending upon several factors including the contributing authors’ practice preferences and the particular patient cohort treated [19-22, 92]. However, it has been estimated that up to 80% would be candidates for BIMA grafting [93]. Subjective and potential obstacles to BIMA use include increased surgical times, increased technical challenges, especially related to the positioning



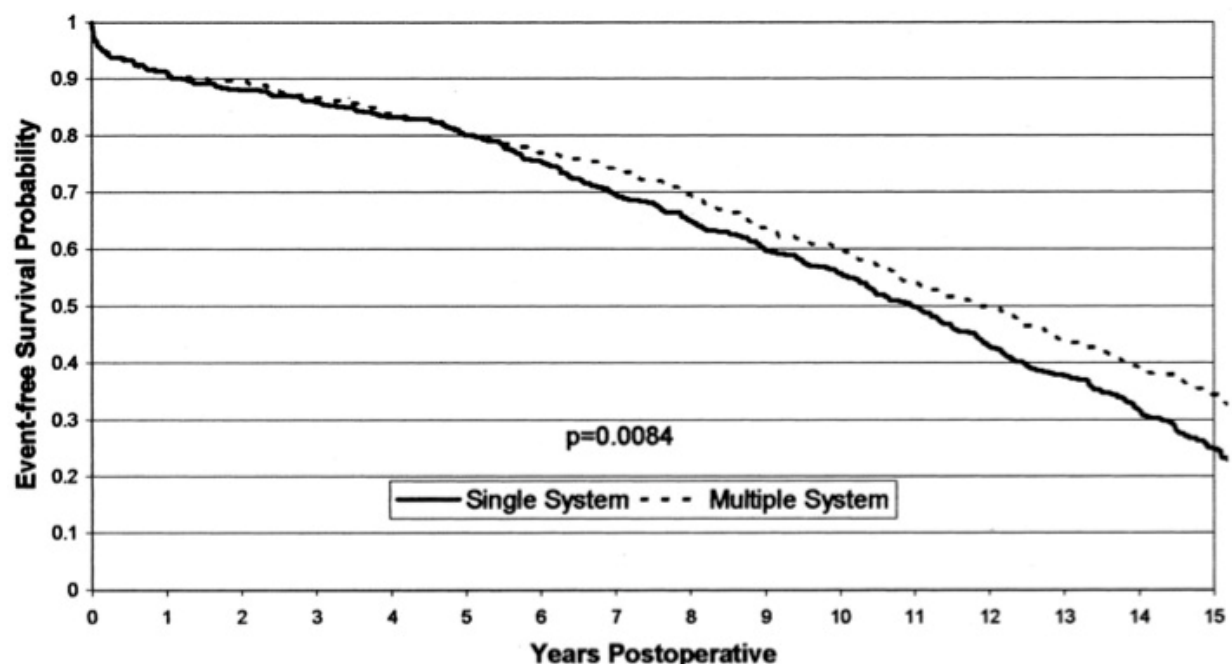


Fig. 2.

of the non-LIMA-to-LAD graft, and increased rates of sternal wound complications relative to patients with one or less IMAs harvested [94]. After 10 years of experience with BIMA CABG, Gansera et al noted increased OR and aortic cross clamp times among BIMA patients compared with single IMA CABG patients. In addition, patients receiving BIMA grafting had higher rates of bleeding requiring postoperative mediastinal reexploration (2.9% vs. 0.6%) along with increased rates of wound complications [95]. However, they also noted that nearly one full additional distal graft was completed when both IMAs were used and, most importantly, BIMA grafting was associated with improved 30-day survival, particularly among diabetic patients, compared with only one IMA graft. [95]. In this same study, a grafting strategy not incorporating 2 IMA conduits was an independent predictor of *perioperative* mortality, directly disputing biases that BIMA grafting is associated with increased *perioperative* complications [95]. Similarly, Kurlansky et al reviewed their collective experience with more than 4,500 consecutive CABG procedures (2,369 single IMA; 2,215 BIMA) and demonstrated that hospital mortality was significantly reduced among patients undergoing BIMA grafting compared with controls [92].

Nevertheless, selection of patients for BIMA grafting should be performed cautiously, particularly when performing surgery through a standard median sternotomy incision. This is primarily related to the well-demonstrated risk for sternal wound infection after BIMA grafting in patients with diabetes, obesity, and other comorbidities [96-100]. However, BIMA grafting can be performed safely without significant increased risk for sternal wound infection as has been frequently demonstrated [24, 98, 100, 101]. For example, Jones et al reviewed their experience with 500 consecutive patients undergoing BIMA CABG over an 11-year period, excluding only those with proximal coronary stenoses <70% and emergency cases with HD instability. Nevertheless, the reported rates of *perioperative* complications were low: operative mortality was 1.8%; deep sternal wound infections were 1%; and 1.8% had take back for bleeding. Incredibly, only 2 patients out of the 500 required reoperation for myocardial ischemia in the follow-up period. [24]. Interestingly, however, Jones et al

point out that if strict criteria for selecting patients for BIMA grafting had been used, nearly 70% of patients in their series would have been excluded [24].

As noted previously, RSVG conduits for CABG have not been compared directly to DES, but comparisons of BIMA grafting with a strategy primarily employing DES for coronary revascularization do exist [102, 103]. After matching for multiple comorbidities, significantly improved angina, reduced need for reintervention, and improved reintervention-free survival at one year have been observed among patients undergoing BIMA CABG relative to PCI [102]. In a similar study, Locker et al examined BIMA CABG versus PCI in diabetic patients and demonstrated more complete coronary revascularization, improved angina, reduced need for reintervention, and increased cardiovascular event-free survival (80% vs. 30%,  $p < 0.001$ ) in patients undergoing BIMA CABG [103]. More importantly, 6-year survival among patients with left main CAD or 3-vessel CAD was significantly better with BIMA revascularization, providing rare evidence for superiority of multiple arterial grafting strategy relative to PCI [103].

One controversial and often-debated point concerning BIMA CABG relates to the native coronary artery planned as a target for the second (right) IMA. Initial opinion considered best results of BIMA CABG to occur when the RIMA was grafted to the “next most” important coronary bed angiographically, assuming that LIMA to LAD was nearly always performed [104]. Schmidt et al found that multiple left-sided grafts lead to improved survival relative to a cohort of patients in which the RIMA was placed to the right coronary artery distribution along with LIMA-LAD grafting [104]. However, it should be noted that graft patency was quite good in both groups (91.7 % vs. 89.6%), as was survival, and freedom from heart failure, angina and need for reintervention [104]. They argued that maximum long-term benefit from BIMA grafting is realized when the 2<sup>nd</sup> IMA is placed to the coronary distribution subtending the most amount of viable myocardium, which was most commonly the circumflex artery distribution.

The requirement for the 2<sup>nd</sup> IMA targeted to the left coronary system has been refuted by other data. Analysis of Cleveland Clinic data shows that benefits of BIMA CABG are similar regardless of the recipient coronary artery for the 2<sup>nd</sup> IMA graft [89]. Sabik et al found that risk-adjusted and unadjusted outcomes did not differ between a strategy for the 2<sup>nd</sup> IMA going to the right coronary or the circumflex coronary artery territory, but several important caveats are applicable, particularly with regard to the right coronary artery if the RIMA is to be used as an in situ graft to this coronary distribution. For instance, the distal RCA should be free of disease, and the proximal RCA stenosis should be  $\geq 70\%$  in diameter to avoid competitive native coronary flow, which may be detrimental to IMA patency. Finally, distal viable myocardium should be ensured [105]. More recently, Kurlansky et al reviewed their experience in over 2,200 consecutive patients who underwent BIMA grafting. In 2/3 of patients, the 2<sup>nd</sup> IMA was placed to the left coronary system, while in 1/3 of patients, the 2<sup>nd</sup> IMA was placed to the right coronary system. Incredibly, 98% of patients had complete coronary revascularization performed with in-situ arterial configurations, that is, avoiding free IMA utilization. At a mean follow-up of nearly 13 years, long-term survival was no different between groups [106, Figure].

Gansera et al recently described their strategy for with BIMA versus single IMA in which the RIMA was usually directed anteriorly and to the left as pedicled conduit for the LAD, while the LIMA was typically directed for revascularization of the lateral wall (circumflex artery distribution) [95]. Importantly, RIMA crossover grafts to the LAD coronary system appear to have patency rates that are not different from LIMA-LAD configurations [107]. In

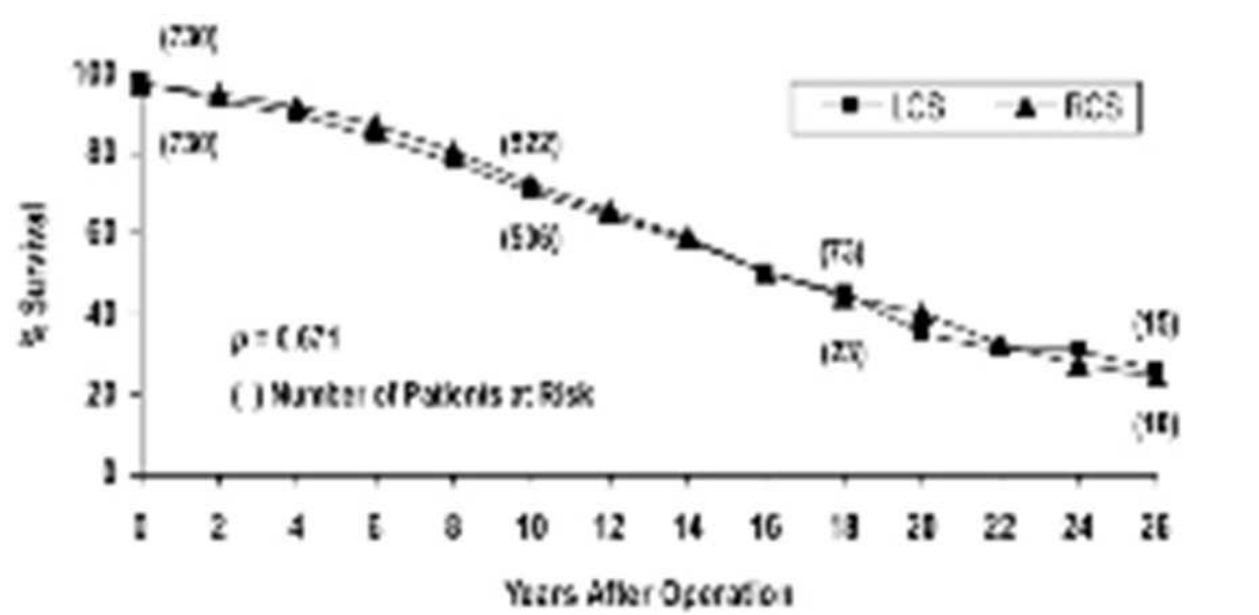


Fig. 3. Actuarial survival of optimally matched patients who underwent coronary artery bypass grafting to the left coronary system (LCS [boxes]) and the right coronary system (RCS [triangles]). Number of patients at risk is in parentheses; results are mean ± standard error of the mean.

fact, Chow et al reported that RIMA patency was similar to LIMA patency regardless of the coronary distribution to which the artery was grafted [108]. However, a “crossover” configuration for the RIMA places the RIMA-LAD graft at significant risk for injury during subsequent redo sternotomy (as potentially required for aortic valve replacement or other procedures). Consequently, when performing this procedure, we often apply a protective barrier to the mediastinum prior to sternal closure (Repel-CV, SyntheMed, Inc., Iselin, NJ, USA) and often reapproximate the thymic remnant to protect the RIMA-LAD graft [108]. Therefore, the specific BIMA configuration doesn’t seem to affect MACE, graft patency, or morbidity/mortality outcomes [110]. Glineur et al evaluated BIMA grafting with both IMA grafts targeted to the left coronary system in either an in-situ or Y-graft configuration, noting equivalent patencies and other mid-term results. In addition, the T-graft configuration has been shown to be safe and effective in grafting multiple distal coronary targets [111]. Most results with BIMA grafting are improved by harvesting the conduit as a “skeletonized” graft rather than as a pedicled graft, in which the accompanying mammary veins and surrounding chest wall muscle and fascia were mobilized along with the artery. Skeletonized IMA harvesting preserves sternal perfusion relative to pedicled IMA harvesting [112, 113]. As a result, skeletonized IMA harvesting is associated with reduced sternal wound complications and longer IMA graft length, allowing more distal coronary targets to be bypassed [Figure, 92, 98, 100]. Skeletonized IMAs also have increased blood flow through the conduit [114], possible as the result of decreased spasm, since skeletonized IMA is typically accomplished without the need for electrocautery on the chest wall [100, 106, 115].

7. Radial artery

Professor Alain Carpentier is credited with introducing the radial artery (RA) as an alternative conduit for CABG [116], but initial results with the RA were unfavorable, leading Carpentier

and others to abandon its use. Subsequently, several RA grafts were empirically observed to be patent at follow-up coronary angiography, leading to the concept's reintroduction in the late 1980s [117]. Since then, the RA has since been widely used and aggressively investigated as a conduit option for CABG due to ease of use, availability in at least 90% of patients, good length allowing reach to any distal target for anastomosis, and it is amenable to concurrent harvesting methods (the IMA, SVG, and RA can be harvested simultaneously) [118]. Depending upon the details of RA grafting, including the target coronary bed and the proximal degree of coronary artery stenosis, long-term RA graft patency approaches 90% and can approximate that of pedicled IMA graft patencies [55, 119, 120].

Since most coronary grafting strategies employing RA grafts do so to evaluate alternatives to SVG conduits, numerous trials comparing RA with SVG for patency and long-term outcomes have been conducted recently [14, 78, 121-123]. In general, these data demonstrate equivalent or improved patency for the RA compared with SVG. One recent randomized controlled trial in the US Veterans Affairs system evaluated RA and SVG as coronary bypass grafts to the "best remaining recipient vessel," with the primary end point of one-year angiographic patency [123]. These data demonstrated equivalent graft patencies for RA compared with SVG, but one-year patency for both groups approached 90% [123]. This is in line with many previous reports on early RA patency, and far exceeds other recent estimations of early graft SVG patency for [8-10]. In contrast, the Radial Artery Versus Saphenous Vein Patency (RSVP) trial compared 5-year graft patency for RA versus SVG when placed to circumflex coronary artery branches that were at least 70% stenotic [121]. These data demonstrated a significantly improved patency for RA grafts (98.3%) relative to SVG grafts (86.4%) [122].

Perhaps the most recognized comparison of RA and SVG is provided by the Radial Artery Patency Study (RAPS), which randomized 561 patients at 13 centers (Canada, New Zealand) to receive a RA graft to the right coronary system or the circumflex coronary system [78]. Saphenous vein grafts were placed to the coronary system not receiving the RA graft, and all patients underwent LIMA-LAD grafting. One-year angiographic follow-up was performed in 440 patients and demonstrated significantly improved patency for RA grafts compared with SVG (91.8% vs. 86.4%,  $p = 0.009$ ). However, angiographic "string sign" was significantly increased in RA grafts compared with SVG (7% vs. 0.9%,  $p = 0.001$ ) [78]. It is unclear as to the long-term significance of this finding; as Carpentier originally noted, others have since reported that patency of the RA graft with a "string sign" may actually improve as the native disease worsens [124]. When patient characteristics and target vessel characteristics were considered in the interpretation of the RAPS data, RA grafts were protective of graft patency by multivariable analysis, while smaller distal targets, less proximal coronary artery stenosis, and diabetes were associated with reduced patency rates for SVG or RA grafts [125]. Graft occlusion was significantly more common among diabetics with SVG (19%) compared with RA grafts in diabetics (12%). In fact, RA grafting conferred even greater protection effect from graft occlusion was among diabetic patients than in the study cohort as a whole [125].

Despite the positive comparisons of RA with SVG patency rates, it has been more difficult to ascribe improved clinical outcomes with RA versus SVG [126]. However, some data suggest that better long-term survival is seen in those receiving RA conduits as compared with SVG (Figure). Zacharias et al evaluated the influence of RA and SVG as a 2<sup>nd</sup> graft (all patients receiving LIMA-LAD) with regard to survival in 2 groups of 925 matched patients each [14]. 6-year survival was improved in RA patients [14, Figure].



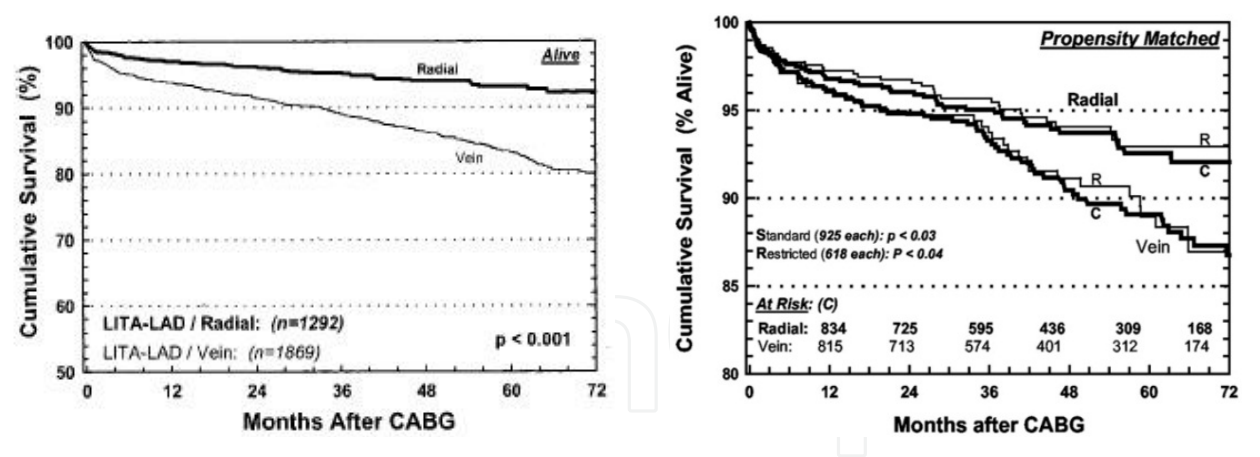


Fig. 4.

Similar data have been reported by Tranbaugh et al, who compared over 800 patients undergoing CABG utilizing LIMA, RA, and SVG with matched patients undergoing CABG with LIMA and SVG only [127]. They showed significantly improved survival in the RA group in addition to improved patency of RA as compared to SVG (81% vs. 47%) in symptomatic patients who subsequently underwent diagnostic angiography after CABG (mean time to repeat catheterization 4.3 years) [127]. Importantly, RA use emerged as independent predictor of survival at 14 years when the data were assessed by multivariable analysis [127, Figure].

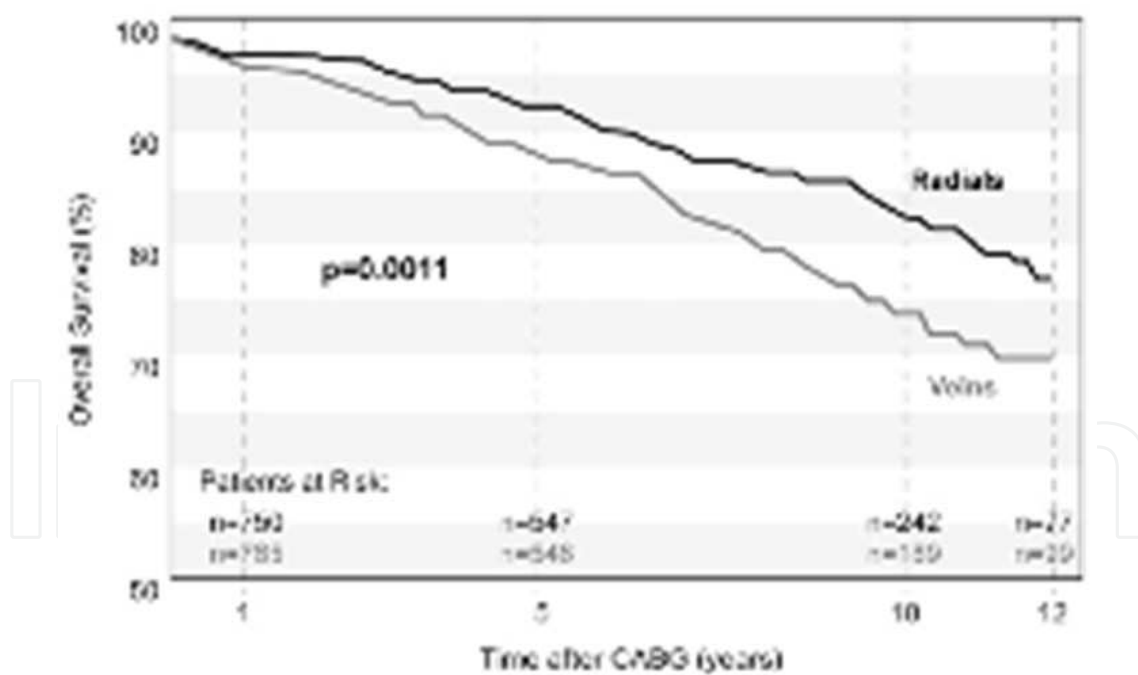


Fig. 5. Comparison of Kaplan-Meier survival for propensity-matched patents ( $p = 0.0011$ , log rank test), CABG - coronary artery bypass graft surgery.

Conduct of these well-designed trials incorporating angiographic follow-up of RA grafts has provided a wealth of insight into features important to successful RA grafting. For example, as noted, early graft failures in the form of “string sign” have been noted in randomized trials [78], and several explanations for this are possible. For example, RA grafts appear



notoriously susceptible to competitive flow within the native coronary circulation, as may occur when native coronary stenosis is not severe ( $\leq 70\%$ ) [128, 129]. Based on this frequent observation, use of the RA is not recommended as a conduit for CABG unless the native coronary artery stenosis is high grade ( $\geq 70\%$ ). This strategy has been associated with improved patency and reduced “string sign” in the RAPS study [78]. Radial artery graft patency is also dependent upon coronary target location, as has been noted for the RIMA graft [89]. For instance, Maniar et al found that grafts to the right coronary artery were more likely to be occluded compared with those placed to the LAD or to the circumflex coronary artery [129], which has been corroborated by others [130].

Certain inherent, unique characteristics of the RA may also contribute to “string sign” formation [131]. Limb arteries such as the RA are known to be more prone to spasm than somatic (IMA) or splanchnic arteries [132]. One key difference between the IMA and the RA is that the RA is significantly more muscular, leading to increased tendency for spasm requiring prolonged vasodilation [133]. Vasodilation of the harvested RA should begin intraoperatively by exposing the conduit to papaverine or verapamil/nitroglycerin. Verapamil/nitroglycerin may be more effective than papaverine in regards to degree of vasodilation and preservation of endothelial function, which can be a problem with papaverine (especially if injected intraluminally) and with the alpha-blocking agent phenoxybenzamine [118]. Postoperatively, most authors have recommended vasodilation with calcium channel blocking agents or long-acting nitrates for at least one month after surgery.

It is debated as to whether the proximal RA graft anastomosis should be performed to the ascending aorta or as a composite graft to other conduits. In a study of over 1,500 radial artery grafts, Maniar et al found no difference between these two types of grafting strategies [129]. Collins et al, reporting the results of the Radial Artery Versus Saphenous Vein Patency (RSVP) trial, demonstrated superior patency of RA grafts compared with SVG, and all proximal anastomoses were performed to the aorta directly [122]. Jung et al recently demonstrated using postoperative CT angiography that RA patency was better when the proximal anastomosis was made to the aorta and did not use the IMA as RA inflow [134]. However, Desai et al found that at one year, 21% of RA grafts going directly to the aorta had “some degree” of angiographic stenosis, which was significantly less than SVG proximal anastomoses [78].

Testing for appropriateness of RA harvesting to gauge the likelihood of hand ischemia after RA harvesting is recommended. The Modified Allen’s Test (MAT) is abnormal in wide ranges ( $<1\%$  to  $27\%$ ), often attributed to observer variability [135]. When MAT was compared with Doppler ultrasonography of the thumb artery, MAT was noted to have a sensitivity of 100% and specificity of 97% for thumb ischemia [136]. Various adjuncts to the MAT have been proposed, including pulse oximetry, plethysmography, and Doppler ultrasonography of the hand [136-138]. However, none of these modalities have been proven to add significantly to the diagnostic accuracy of a properly performed MAT, which appears to accurately and safely select patients for RA harvesting.

Harvesting of the RA has been performed traditionally by the open, “no-touch” technique [127]. However, more recently, the trend appears to have shifted toward endoscopic RA harvesting with demonstrated functional and cosmetic advantages [139] and no increase in vasoreactivity or damaged endothelium [140]. However, harvesting the RA as a pedicle with harmonic scalpel appears to be less injurious than using electrocautery for tissue dissection [140]. Patency rates are similar regardless of method of harvesting [142].

## 8. Summary

Coronary artery bypass grafting remains one of the most frequently performed major operations worldwide. Even in the burgeoning era of percutaneous approaches to coronary heart disease, the indications for CABG continue to be based on relief of angina, prevention of myocardial damage from ischemic complications, and prolonged expected survival in select patients. In order to provide the best results for CABG patients, the surgeon's chief focus should be on improved long-term outcomes. Based on the information available, the best long-term outcomes of CABG are achieved when incorporating a strategy of grafting with arterial conduits.

## 9. References

- [1] Park SJ, Kim YH, Park DW, et al. Randomized trial of stents versus bypass surgery for left main coronary artery disease. *N Engl J Med* 2011; 364: 1718-27.
- [2] Lee MS, Tseng CH, Barker CM, et al. Outcome after surgery and percutaneous intervention for cardiogenic shock and left main disease. *Ann Thorac Surg* 2008; 86: 29-34.
- [3] Babaev A, Frederick PD, Pasta DJ, et al. Trends in management and outcomes of patients with acute myocardial infarction complicated by cardiogenic shock. *JAMA* 2005; 294: 448-54.
- [4] Epstein AJ, Polsky D, Yang F, et al. Coronary revascularization trends in the United States, 2001-2008. *JAMA* 2011; 305: 1769-76.
- [5] Hannan EL, Wu C, Walford G, et al. Drug-eluting stents vs. coronary-artery bypass grafting in multivessel coronary disease. *N Engl J Med* 2008; 358: 331-41.
- [6] Serruys PW, Morice MC, Kappertain AP, et al. Percutaneous coronary intervention versus coronary-artery bypass grafting for severe coronary artery disease. *N Engl J Med* 2009; 360: 961-72.
- [7] Bourassa MG, Campeau L, Lesperance J, Grondin CM. Changes in grafts and coronary arteries after saphenous vein aortocoronary bypass surgery: results at repeat angiography. *Circulation* 1982; 65: 90-7.
- [8] Yun KL, WU Y, Aharonian V, et al. Randomized trial of endoscopic versus open vein harvest for coronary artery bypass grafting: six-month patency rates. *J Thorac Cardiovasc Surg* 2005; 129: 496-503.
- [9] Widimsky P, Straka Z, Stros P, et al. One-year coronary bypass graft patency: a randomized comparison between off-pump and on-pump surgery angiographic results of the PRAGUE-4 trial. *Circulation* 2004; 110: 3418-23.
- [10] Alexander JH, Hafley G, Harrington RA, et al. Efficacy and safety of edifoligide, an E2F transcription factor decoy, for prevention of vein graft failure following coronary artery bypass graft surgery: PREVENT IV: a randomized controlled trial. *JAMA* 2005; 294: 2446-54.
- [11] Vassiliades TA, Douglas JS, Morris DC, et al. Integrated coronary revascularization with drug-eluting stents: immediate and seven-month outcome. *J Thorac Cardiovasc Surg* 2006; 131: 956-62.
- [12] Shroyer AL, Grover FL, Hattler B, et al. On-pump versus off-pump coronary-artery bypass surgery. *N Engl J Med* 2009; 361: 1827-37.

- [13] de Canniere D, Wimmer-Greinecker G, Cichon R, et al. Feasibility, safety, and efficacy of totally endoscopic coronary artery bypass grafting: multicenter European experience. *J Thorac Cardiovasc Surg* 2007; 134: 710-6.
- [14] Zacharias A, Habib RH, Schwann TA, Riordan CJ, Durham SJ, Shah A. Improved survival with radial artery versus vein conduits in coronary bypass surgery with left internal thoracic artery to left anterior descending artery grafting. *Circulation* 2004; 109: 1489-96.
- [15] Burfeind WR, Jr., Glower DD, Wechler AS, et al. Single versus multiple internal mammary artery grafting for coronary artery bypass: 15-year follow-up of a clinical practice trial. *Circulation* 2004; 110: II-27-35.
- [16] Cho KR, Kim JS, Choi JS, Kim KB. Serial angiographic follow-up of grafts one year and five years after coronary artery bypass surgery. *Eur J Cardiothorac Surg* 2006; 29: 511-6.
- [17] Nishida H, Tomizawa Y, Endo M, Kurosawa H. Survival benefit of exclusive use of in situ arterial conduits over combined use of arterial and vein grafts for multiple coronary artery bypass grafting. *Circulation* 2005; 112: I-299 -303.
- [18] Sabik JF III, Blackstone EH, Gillinov AM, Smedira NG, Lytle BW. Occurrence and risk factors for reintervention after coronary artery bypass grafting. *Circulation* 2006; 114 [suppl I]: I-454-60.
- [19] Tabata M, Grab JD, Khalpey Z, et al. Prevalence and variability of internal mammary artery graft use in contemporary multivessel coronary artery bypass graft surgery: analysis of the Society of Thoracic Surgeons National Cardiac Database. *Circulation* 2009; 120: 935-40.
- [20] Grover FL, Johnson RR, Marshall G, et al. Impact of mammary grafts on coronary bypass operative mortality and morbidity. *Ann Thorac Surg* 1994; 57: 559-69.
- [21] Galbut DL, Traad EA, Dorman MJ, et al. Seventeen-year experience with bilateral mammary artery grafts. *Ann Thorac Surg* 1990; 49: 195-201.
- [22] Kappetain AP, Dawkins KD, Mohr FW, et al. Current percutaneous intervention and coronary bypass grafting procedures for three-vessel and left main coronary artery disease. Insights from the SYNTAX run-in phase. *Eur J Cardio-thorac Surg* 2006; 29: 486-91.
- [23] Guru V, Fremes SE, Tu JV. How many arterial grafts are enough? A population-based study of midterm outcomes. *J Thorac Cardiovasc Surg* 2006; 131: 1021-8.
- [24] Jones JW, Schmidt SE, Miller R, Nahas C, Beall AC Jr. Suitability and durability of multiple internal thoracic artery coronary artery bypasses. *Ann Surg* 1997; 225: 785-92.
- [25] Gruntzig A. Transluminal dilatation of coronary-artery stenosis. *Lancet* 1978; 1: 263.
- [26] Moses JW, Stone GW, Nikolsky E, et al. Drug-eluting stents in the treatment of intermediate lesions: pooled analysis from four randomized trials. *J Am Coll Cardiol* 2006; 47: 2164-71.
- [27] Tonino PAL, De Bruyne B, Pijls NHJ, et al. Fractional flow reserve versus angiography for guiding percutaneous coronary intervention. *N Engl J Med* 2009; 360: 213-24.
- [28] Pfisterer M, Brunner-La Rocca HP, Buser PT, et al. Late clinical events after clopidogrel discontinuation may limit the benefit of drug-eluting stents: an observational study of drug-eluting versus bare-metal stents. *J Am Coll Cardiol* 2006; 48: 2584-91.

- [29] Bavry AA, Kumbhani DJ, Helton TJ, Borewk PP, Mood GR, Bhatt DL. Late thrombosis of drug-eluting stents: a meta-analysis of randomized clinical trial. *Am J Med* 2006; 119: 1056-61.
- [30] Eisenstein EL, Anstrom KJ, Kong DF, et al. Clopidogrel use and long-term clinical outcomes after drug-eluting stent implantation. *JAMA* 2007; 297: 159-68.
- [31] Moses JW, Leon MB, Popma JJ, et al. Sirolimus-eluting stents versus standard stents in patients with stenosis in a native coronary artery. *N Engl J Med* 2003; 349: 1315-23.
- [32] Morice MC, Serruys PW, Sousa JE, et al. A randomized comparison of a sirolimus-eluting stent with a standard stent for coronary revascularization. *N Engl J Med* 2002; 346: 1773-80.
- [33] Park SJ, Park DW, Kim YH, et al. Duration of dual antiplatelet therapy after implantation of drug-eluting stents. *N Engl J Med* 2010; 362: 1374-82.
- [34] The BARI Investigators. Comparison of coronary bypass surgery with angioplasty in patients with multivessel disease. *N Engl J Med* 1996; 335: 217-25.
- [35] The BARI Investigators. The final 10-year follow-up results from the BARI randomized trial. *J Am Coll Cardiol* 2007; 49: 1600-6.
- [36] Henderson RA, Pocock SJ, Sharp SJ, et al. Long-term results of RITA-1 trial: clinical and cost comparisons of coronary angioplasty and coronary-artery bypass grafting. Randomised Intervention Treatment of Angina. *Lancet* 1998; 352: 1419-25.
- [37] Hamm CW, Reimers J, Ischinger T, Rupprecht HJ, Berger J, Bleifeld W. A randomized study of coronary angioplasty compared with bypass surgery in patients with symptomatic multivessel coronary disease. German Angioplasty Bypass Surgery Investigation (GABI). *N Engl J Med* 1994; 331: 1037-43.
- [38] Hoffman SN, TenBrook JA Jr., Wolf MP, Pauker SG, Salem DN, Wong JB. A meta-analysis of randomized controlled trials comparing coronary artery bypass graft with percutaneous transluminal coronary angioplasty: one-to eight-year outcomes. *J Am Coll Cardiol* 2003; 41: 1293-304.
- [39] SoS Investigators. Coronary artery bypass surgery versus percutaneous coronary intervention with stent implantation in patients with multivessel coronary artery disease (Stent or Surgery trial): a randomised control trial. *Lancet* 2002; 360: 965-70.
- [40] Rodriguez AE, Baldi J, Fernandez Pereira C, et al. Five-year follow-up of the Argentine randomized trial of coronary angioplasty with stenting versus coronary bypass surgery in patients with multiple vessel disease (ERACI II). *J Am Coll Cardiol* 2005; 46: 582-8.
- [41] Serruys PW, Ong ATL, van Herwerden LA, et al. Five-year outcomes after coronary stenting versus bypass surgery for the treatment of multivessel disease: the final analysis of the Arterial Revascularization Therapies Study (ARTS) Randomized Trial. *J Am Coll Cardiol* 2005; 46: 575-81.
- [42] Kappetein AP, Feldman TE, Mack MJ, et al. Comparison of coronary bypass surgery with drug-eluting stenting for the treatment of left main and/or three-vessel disease: 3-year follow-up of the SYNTAX trial. *Eur Heart J* 2011; 32: 2125-34.
- [43] Ulrich MR, Brock DM, Ziskind AA. Analysis of trends in coronary artery bypass grafting and percutaneous coronary intervention rates in Washington State from 1987 to 2001. *Am J Cardiol* 2003; 92: 836-9.
- [44] Abramov D, Tamariz MG, Femes SE, et al. Trends in coronary artery bypass surgery results: a recent, 9-year study. *Ann Thorac Surg* 2000; 70: 84-90.



- [45] Eifert S, Mair H, Boulesteix AL, et al. Mid-term outcomes of patients with PCI prior to CABG in comparison to patients with primary CABG. *Vasc Health Risk Manag* 2010; 6: 495-501.
- [46] Zhao DX, Leacche M, Balaguer JM, et al. Routine intraoperative completion angiography after coronary artery bypass grafting and 1-stop hybrid revascularization. *J Am Coll Cardiol* 2009; 53: 232-41.
- [47] Massoudy P, Theilmann M, Lehmann, et al. Impact of prior percutaneous coronary intervention on the outcome of coronary artery bypass surgery: a multicenter analysis. *J Thorac Cardiovasc Surg* 2009; 137: 840-5.
- [48] Theilmann M, Neuhauser M, Knipp S, et al. Prognostic impact of previous percutaneous coronary intervention in patients with diabetes mellitus and triple-vessel disease undergoing coronary artery bypass surgery. *J Thorac Cardiovasc Surg* 2007; 134: 470-6.
- [49] Chocron S, Baillot R, Rouleau JL, et al. Impact of previous percutaneous transluminal coronary angioplasty and/or stenting revascularization on outcomes after surgical revascularization: insights from the imagine study. *Eur Heart J* 2008; 29: 673-9.
- [50] Tran HA, Barnett SD, Hunt SL, Chon A, Ad N. The effect of previous coronary artery stenting on short- and intermediate-term outcome after surgical revascularization in patients with diabetes mellitus. *J Thorac Cardiovasc Surg* 2009; 138: 316-23.
- [51] Rao C Stanbridge RD, Chikwe J, et al. Does previous percutaneous coronary stenting compromise the long-term efficacy of subsequent coronary artery bypass surgery? A microsimulation study. *Ann Thorac Surg* 2008; 85: 501-7.
- [52] Sabiston DC, Jr. The William F. Rienhoff, Jr Lecture: The Coronary Circulation. *The Johns Hopkins Medical Journal*. 1974; 134: 314.
- [53] Dacey LJ, Braxton JH Jr, Kramer RS, et al. Long-term outcomes of endoscopic vein harvesting after coronary artery bypass grafting. *Circulation* 2011; 123: 147-153.
- [54] Atkins BZ, Salomone JP, Subramanian A, Burke R, Vercruysse GA. Management of traumatic coronary artery injuries: advantages of off-pump coronary artery bypass. *Eur J Trauma Emerg Surg* 2010; 36: 380-4.
- [55] Tatoulis J, Buxton BF, Fuller JA. Patencies of 2,127 arterial to coronary conduits over 15 years. *Ann Thorac Surg* 2004; 77: 93-101.
- [56] Rasmussen C, Thiis JJ, Clemmensen P, et al. Significance and management of early graft failure after coronary artery bypass grafting: feasibility and results of acute angiography and re-re-vascularization. *Eur J Cardiothorac Surg* 1997; 12: 847-52.
- [57] FitzGibbon GM, Leach AJ, Keon WJ, Burton JR, Kafka HP. Coronary bypass graft fate. Angiographic study of 1,179 vein grafts early, one year, and five years after operation. *J Thorac Cardiovasc Surg* 1986; 91: 773-8.
- [58] Verrier ED, Shernan SK, Taylor KM, et al. Terminal complement blockade with pexelizumab during coronary artery bypass graft surgery requiring cardiopulmonary bypass: a randomized trial. *JAMA* 2004; 291: 2319-27.
- [59] Yusuf S, Zucker D, Passamani E, et al. Effect of coronary artery bypass graft surgery on survival: overview of 10-year results from randomized trials by the Coronary Artery Bypass Graft Surgery Trialists Collaboration. *Lancet* 1994; 344: 563-70.
- [60] Shah PJ, Gordon I, Fuller J, et al. Factors affecting saphenous vein graft patency: clinical and angiographic study in 1402 symptomatic patients operated on between 1977 and 1999. *J Thorac Cardiovasc Surg* 2003; 126: 1972-7.



- [61] Thielmann M, Massoudy P, Jaeger BR, et al. Emergency re-revascularization with percutaneous coronary intervention, reoperation, or conservative treatment in patients with acute perioperative graft failure following coronary artery bypass surgery. *Eur J Cardiothorac Surg* 2006; 30: 117-25.
- [62] Tector AJ, Schmahl TM, Janson B, et al. The internal mammary artery graft. Its longevity after coronary bypass. *JAMA* 1981; 246: 2181-3.
- [63] Gluckman TJ, McLean RC, Schulman SP, et al. Effects of aspirin responsiveness and platelet reactivity on early vein graft thrombosis after coronary artery bypass graft surgery. *J Am Coll Cardiol* 2011; 57: 1069-77.
- [64] Rousou LJ, Taylor KB, Lu XG, et al. Saphenous vein conduits harvested by endoscopic technique exhibit structural and functional damage. *Ann Thorac Surg* 2009; 87: 62-70.
- [65] Hayward TZ III, Hey LA, Newman LL, et al. Endoscopic vein versus open saphenous vein harvest: the effect on postoperative outcomes. *Ann Thorac Surg* 1999; 68: 2107-10.
- [66] Felisky CD, Paull DL, Hill ME, et al. Endoscopic greater saphenous vein harvesting reduces the morbidity of coronary artery bypass surgery. *Am J Surg* 2002; 183: 576-9.
- [67] Shahian DM, O'Brien SM, Filardo G, et al. The Society of Thoracic Surgeons 2008 cardiac surgery risk models, part 1: coronary artery bypass grafting surgery. *Ann Thorac Surg* 2009; 88: S2-22.
- [68] Zenati MA, Shroyer AL, Collins JF, et al. Impact of endoscopic versus open saphenous vein harvest technique on late coronary artery bypass grafting patient outcomes in the ROOBY (Randomized On/Off Bypass) Trial. *J Thorac Cardiovasc Surg* 2011; 141: 338-44.
- [69] Lopes RD, Hafley GE, Allen KB, et al. Endoscopic versus open vein-grafting harvesting in coronary-artery bypass surgery. *NEJM* 2009; 16: 235-44.
- [70] Desai P, Kiani S, Thiruvanthan N, et al. Impact of the learning curve for endoscopic vein harvest on conduit quality and early graft patency. *Ann Thorac Surg* 2011; 91: 1385-91.
- [71] Souza DS, Johansson B, Bojo L, et al. Harvesting the saphenous vein with surrounding tissue for CABG provides long-term patency comparable to the left internal thoracic artery: results of a randomized longitudinal trial. *J Thorac Cardiovasc Surg* 2006; 132: 373-8.
- [72] Dreifaldt M, Souza DS, Loesch A, et al. The "no-touch" harvesting technique for vein grafts in coronary artery bypass surgery preserves an intact vasa vasorum. *J Thorac Cardiovasc Surg*. 2011; 141: 145-50.
- [73] Shroyer ALW, Coombs LP, Peterson ED, et al. The Society of Thoracic Surgeons: 30-day operative mortality and morbidity risk models. *Ann Thorac Surg* 2003; 75: 1856-65.
- [74] Flaherty JD, Davidson CJ. Diabetes and coronary revascularization. *JAMA* 2005; 293: 1501-8.
- [75] Muneretto C, Bisleri G, Negri A, et al. Total arterial myocardial revascularization with composite grafts improves results of coronary surgery in elderly: a prospective randomized comparison with conventional coronary artery bypass surgery. *Circulation* 2003; 108: II-29-33.

- [76] Loop FD, Lytle BW, Cosgrove DM, et al. Influence of the internal-mammary-artery graft on 10-year survival and other cardiac events. *N Engl J Med* 1986; 314: 1-6.
- [77] Nasso G, Coppola R, Bonifazi R, et al. Arterial revascularization in primary coronary artery bypass grafting: direct comparison of 4 strategies-results of the Stand-in-Y Mammary Study. *J Thorac Cardiovas Surg* 2009; 137: 1093-1100.
- [78] Desai ND, Cohen EA, Naylor CD, Fremes SE. A randomized comparison of radial-artery and saphenous-vein coronary bypass grafts. *N Engl J Med* 2004; 351: 2302-9.
- [79] Gaudino M, Cellini C, Pragliola C, et al. Arterial versus venous bypass grafts in patients with in-stent restenosis. *Circulation* 2005; 112 [suppl I]: I-265-9.
- [80] Tatoulis J, Buxton BF, Fuller JA, Royce AG. Total arterial coronary revascularization: techniques and results in 3,220 patients. *Ann Thorac Surg* 1999; 68: 2093-9.
- [81] Tector AJ, McDonald ML, Kress DC, et al. Purely internal thoracic artery grafts: outcomes. *Ann Thorac Surg* 2001; 72: 450-5.
- [82] Zacharias A, Schwann TA, Riordan CJ, Durham SJ, Shah AS, Habib RH. Late results of conventional versus all-arterial revascularization based on internal thoracic and radial artery grafting. *Ann Thorac Surg* 2009; 87: 19-26.
- [83] Muneretto C, Bisleri G, Negri A, et al. Total arterial myocardial revascularization with composite grafts improves results of coronary surgery in elderly: a prospective randomized comparison with conventional coronary artery bypass surgery. *Circulation* 2003; 108 [suppl II]: II-29-33.
- [84] Cameron A, Davis KB, Green G, Schaff HV. Coronary bypass surgery with internal-thoracic-artery grafts—effects on survival over a 15-year period. *N Engl J Med* 1996; 334: 216-19.
- [85] Barner HB, Standeven JW, Reese J. Twelve-year experience with internal mammary artery for coronary artery bypass. *J Thorac Cardiovas Surg* 1985; 90: 668-75.
- [86] Kay EB. Internal mammary artery grafting. Letter to the editor. *J Thorac Cardiovas Surg* 1987; 94: 312.
- [87] Rankin JS, Harrell FE Jr. Measuring the therapeutic efficacy of coronary revascularization: implications for future management. *J Thorac Cardiovas Surg* 2006; 131: 944-8.
- [88] Lytle BW, Blackstone EH, Sabik JF, Houghtaling P, Loop FD, Cosgrove DM. The effect of bilateral internal internal thoracic artery grafting on survival during 20 postoperative years. *Ann Thorac Surg* 2004; 78: 2005-14.
- [89] Sabik JF III, Stockins A, Nowicki ER, Blackstone EH, Houghtaling PL, Lytle BW, Loop FD. Does the location of the second internal thoracic artery graft influence outcome of coronary artery bypass grafting? *Circulation* 2008; 118 [suppl 1]: S210-5.
- [90] Lytle BW, Blackstone EH, Loop FD, et al. Two internal thoracic artery grafts are better than one. *J Thorac Cardiovas Surg* 1999; 117: 855-72.
- [91] Gansera B, Gillrath G, Lieber M, Angelis I, Schmidtler F, Kemkes BM. Are men treated better than women? Outcome of male versus female patients after CABG using bilateral internal thoracic arteries. *Thorac Cardiovas Surg* 2004; 52: 261-7.
- [92] Kurlansky PA, Traad EA, Dorman MJ, et al. Thirty-year follow-up defines survival benefit for second internal mammary artery in propensity-matched groups. *Ann Thorac Surg* 2010; 90: 101-8.
- [93] Green GE, Sosa JA, Cameron A. Prospective study of feasibility of routine use of multiple internal mammary artery anastomoses. *J Cardiovas Surg* 1989; 30: 643-7.

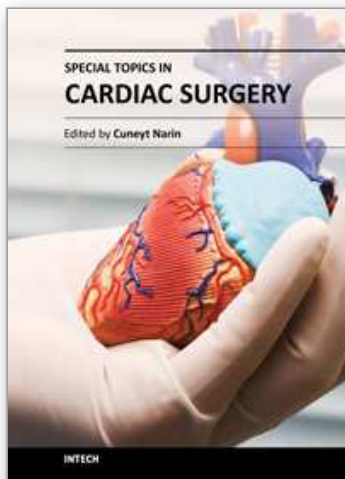
- [94] Borger MA, Cohen G, Buth KJ, et al. Multiple arterial grafts. Radial versus right internal thoracic arteries. *Circulation* 1998; 98 (suppl II): II7 – 14.
- [95] Gansera B, Schmidler F, Gillrath G, et al. Does bilateral ITA grafting increase perioperative complications? Outcome of 4,462 patients with bilateral versus 4,202 patients with single ITA bypass. *Eur J Cardiothorac Surg* 2006; 30: 318-23.
- [96] Saso S, James D, Vecht JA, et al. Effect of skeletonization of the internal thoracic artery for coronary revascularization on incidence of sternal wound infection. *Ann Thorac Surg* 2010; 89: 661-70.
- [97] Toumpoulis IK, Anagnostopoulos CE, Derosé JJ jr, Swistel DG. The impact of deep sternal wound infection on long-term survival after coronary artery bypass grafting. *Chest* 2005; 127: 464-71.
- [98] Pevni D, Mohr R, Lev-Run O, et al. Influence of bilateral skeletonized harvesting on occurrence of deep sternal wound infection in 1,000 consecutive patients undergoing bilateral internal thoracic artery grafting. *Ann Surg* 2003; 237: 277-80.
- [99] Diez C, Koch, D, Kuss O, Silber RE, Friedrich I, Boergermann J. Risk factors for mediastinitis after cardiac surgery-a retrospective analysis of 1700 patients. *J Cardiothorac Surg* 2007; 2: 23.
- [100] Pevni D, Uretzky G, Mohr A, et al. Routine use of bilateral skeletonized internal thoracic artery grafting: long-term results. *Circulation* 2008; 118: 705-12.
- [101] Momin AU, Deshpande R, Potts J, et al. Incidence of sternal infection in diabetic patients undergoing bilateral internal thoracic artery grafting. *Ann Thorac Surg* 2005; 80: 1765-72.
- [102] Herz I, Moshkovitz Y, Loberman D, et al. Drug-eluting stents versus bilateral internal thoracic grafting for multivessel coronary disease. *Ann Thorac Surg* 2005; 80: 2086-90.
- [103] Locker C, Mohr R, Lev-Ran O, et al. Comparison of bilateral thoracic artery grafting with percutaneous coronary interventions in diabetic patients. *Ann Thorac Surg* 2004; 78: 471-5.
- [104] Schmidt SE, Jones JW, Thornby JJ, Miller CC 3<sup>rd</sup>, Beall AC Jr. Improved survival with multiple left-sided bilateral internal thoracic artery grafts. *Ann Thorac Surg* 1997; 64: 9-14.
- [105] Sabik JF III; Lytle BW, Blackstone EH, Khan M, Houghtaling PL, Cosgrove DM. Does competitive flow reduce internal thoracic artery graft patency? *Ann Thorac Surg* 2003; 76: 1490-6.
- [106] Kurlansky PA, Traad EA, Dorman MJ, Galbut DL, Zucker M, Ebra G. Location of the second internal mammary artery graft does not influence outcome of coronary artery bypass grafting. *Ann Thorac Surg* 2011; 91: 1378-84.
- [107] Dion R, Etienne PY, Verhelst R, et al. Bilateral mammary grafting. *Eur J Cardiothorac Surg* 1993; 7: 287-94.
- [108] Chow MS, Sim E, Orszulak TA, Schaff HV. Patency of internal thoracic artery grafts: comparison of right versus left and importance of vessel grafted. *Circulation* 1994; 90: II:129-32.
- [109] Lodge AJ, Wells WJ, Backer CL, et al. A novel resorbable film reduces postoperative adhesions after infant cardiac surgery. *Ann Thorac Surg* 2008; 86: 614-21.
- [110] Glineur D, Hanet C, Poncelet A. Comparison of bilateral internal thoracic artery revascularization using in-situ or Y graft configurations: a prospective randomized

- clinical, functional, and angiographic midterm evaluation. *Circulation* 2008; 118: S216-21.
- [111] El Nakadi B, Choghari C, Joris M. Complete myocardial revascularization with bilateral internal thoracic artery T-graft. *Ann Thorac Surg* 2000; 69: 498-500.
- [112] Lorbergoy M, Medalion B, Bder O, Lockman J, Cohen N, Schachner A, Cohen AJ. <sup>99m</sup>Tc-MDP bone SPECT for the evaluation of sternal ischaemia following internal mammary artery dissection. *Nucl Med Commun* 2002; 23: 47-52.
- [113] Knobloch K, Lichtenberg A, Pichlmaier M, Mertsching H, Krug A, Klima U, Haverich A. Microcirculation of the sternum following harvesting of the left internal mammary artery. *Thorac Cardiovasc Surg* 2003; 51: 255-9.
- [114] Mannacio V, Di Tommaso L, De Amicis V, Stassano P, Vosa C. Randomized flow capacity comparison of skeletonized and pedicled left internal mammary artery. *Ann Thorac Surg* 2011; 91: 24-30.
- [115] Gurevitch J, Kramer A, Locker C, et al. Technical aspects of double-skeletonized internal mammary artery grafting. *Ann Thorac Surg* 2000; 69: 841-6.
- [116] Carpentier A, Guermontprez JL, Deloche A, Frechette C, DuBost C. The aorto to coronary radial artery bypass graft. A technique avoiding pathological changes in grafts. *Ann Thorac Surg* 1973; 16: 111-21.
- [117] Acar C, Jebara VA, Portoghesi M, et al. Revival of the radial artery for coronary artery bypass grafting. *Ann Thorac Surg* 1992; 54: 652-60.
- [118] Attaran S, John L, El-Gamel A. Clinical and potential use of pharmacological agents to reduce radial artery spasm in coronary artery surgery. *Ann Thorac Surg* 2008; 85: 1483-9.
- [119] Cameron J, Trivedi S, Stafford G, Bett JHN. Five-year angiographic patency of radial artery bypass grafts. *Circulation* 2004; 110 [suppl II]: II-23-6.
- [120] Tatoulis J, Buxton BF, Fuller JA, et al. Long-term patency of 1108 radial arterial-coronary angiograms over 10 years. *Ann Thorac Surg* 2009; 88: 23-9.
- [121] Cameron J, Trivedi S, Stafford G, Bett JHN. Five-year angiographic patency of radial artery bypass grafts. *Circulation* 2004; 110 [suppl II]: II-23 - 6.
- [122] Collins P, Webb CM, Chong CF, Moat NE. Radial artery versus saphenous vein patency randomized trial: five-year angiographic follow-up. *Circulation* 2008; 117: 2859-64.
- [123] Goldman S, Sethi GK, Holman W, et al. Radial artery grafts vs. saphenous vein grafts in coronary artery bypass surgery: a randomized trial. *JAMA* 2011; 305: 167-74.
- [124] Possati G, Gaudino M, Alessandrini F, et al. Midterm clinical and angiographic results of radial artery grafts used for myocardial revascularization. *J Thorac Cardiovasc Surg* 1998; 116: 1015-21.
- [125] Desai ND, Naylor CD, Kiss A, et al. Impact of patient and target-vessel characteristics on arterial and venous bypass graft patency: insight from a randomized trial. *Circulation* 2007; 115: 684-91.
- [126] Hayward PAR, Hare, DL, Gordon I, Buxton BF. Effect of radial artery or saphenous vein conduit for the second graft on 6-year clinical outcome after coronary artery bypass grafting. Results of a randomized trial. *Eur J Cardiothorac Surg* 2008; 34: 113-7.



- [127] Tranbaugh RF, Dimitrova KR, Friedmann P, et al. Radial artery conduits improve long-term survival after coronary artery bypass grafting. *Ann Thorac Surg* 2010; 90: 1165-72.
- [128] Hashimoto H, Isshiki T, Ikari Y, et al. Effects of competitive blood flow on arterial graft patency and diameter. *J Thorac Cardiovasc Surg* 1996; 111: 399-407.
- [129] Maniar HS, Sundt TM, Barner HB, et al. Effect of target stenosis and location on radial artery graft patency. *J Thorac Cardiovasc Surg* 2002; 123: 45-52.
- [130] Achouh P, Boutekadjirt R, Toledano D, et al. Long-term (5- to 20-year) patency of the radial artery for coronary bypass grafting. *J Thorac Cardiovasc Surg* 2010; 140: 73-9.
- [131] Parolari A, Rubini P, Alamanni F, et al. The radial artery: which place in coronary operation? *Ann Thorac Surg* 2000; 69: 1288-94.
- [132] He GW. Arterial grafts for coronary artery bypass grafting: biological characteristics, functional classification and clinical choice. *Ann Thorac Surg* 1999; 67: 277-84.
- [133] Pevni D, Mohr R, Lev-Ran O, et al. Technical aspects of composite arterial grafting with double skeletonized internal thoracic arteries. *Chest* 2003; 123: 1348-54.
- [134] Jung SH, Song H, Choo SJ, et al. Comparison of radial artery patency according to proximal anastomotic site: direct aorta to radial artery anastomosis is superior to radial artery composite grafting. *J Thorac Cardiovasc Surg* 2009; 138: 76-83.
- [135] Brzezinski M, Luisetti T, London MJ. Radial artery cannulation: a comprehensive review of recent anatomic and physiologic investigations. *Anesth Analg* 2009; 109: 1763-81.
- [136] Ruengsakulrach P, Brooks M, Hare D, Gordon I, Buxton B. Preoperative assessment of hand circulation by means of Doppler ultrasonography and the modified Allen's test. *J Thorac Cardiovasc Surg* 2001; 121: 526-31.
- [137] Johnson WH II, Cromartie RS III, Arrants JE, Wuamett JD, Holt JB. Simplified method for candidate selection for radial artery harvesting. *Ann Thorac Surg* 1998; 65: 1167.
- [138] Fuhrman TM, Pippin WD, Talmage LA, Reilley TE. Evaluation of collateral circulation of the hand. *J Clin Monit* 1992; 8: 28-32.
- [139] Navia JL, Brozzi N, Chiu J, et al. Endoscopic versus open radial artery harvesting for coronary artery bypass grafting. *Scand Cardiovasc J* 2011 May 16 (Epub ahead of print).
- [140] Shapira OM, Eskenazi BR, Anter E, et al. Endoscopic versus conventional radial artery harvest for coronary artery bypass grafting: functional and histologic assessment of the conduit. *J Thorac Cardiovasc Surg* 2006; 131: 388-94.
- [141] Brazio PS, Laird PC, Xu C, et al. Harmonic scalpel versus electrocautery with hemoclips for harvest of radial artery conduits: reduced risk of spasm and intimal injury on optical coherence tomography. *J Thorac Cardiovasc Surg* 2008; 136: 1302-8.
- [142] Bleiziffer S, Hettich I, Eisenhauer B, et al. Patency rates of endoscopically harvested radial arteries one year after coronary artery bypass grafting. *J Thorac Cardiovasc Surg* 2007; 134: 649-56.





## **Special Topics in Cardiac Surgery**

Edited by Prof. Cuneyt Narin

ISBN 978-953-51-0148-2

Hard cover, 308 pages

**Publisher** InTech

**Published online** 29, February, 2012

**Published in print edition** February, 2012

This book considers mainly the current perioperative care, as well as progresses in new cardiac surgery technologies. Perioperative strategies and new technologies in the field of cardiac surgery will continue to contribute to improvements in postoperative outcomes and enable the cardiac surgical society to optimize surgical procedures. This book should prove to be a useful reference for trainees, senior surgeons and nurses in cardiac surgery, as well as anesthesiologists, perfusionists, and all the related health care workers who are involved in taking care of patients with heart disease which require surgical therapy. I hope these internationally cumulative and diligent efforts will provide patients undergoing cardiac surgery with meticulous perioperative care methods.

### **How to reference**

In order to correctly reference this scholarly work, feel free to copy and paste the following:

Zane B. Atkins, Kristine V. Owen and Walter G. Wolfe (2012). Conduit Selection for Improved Outcomes in Coronary Artery Bypass Surgery, Special Topics in Cardiac Surgery, Prof. Cuneyt Narin (Ed.), ISBN: 978-953-51-0148-2, InTech, Available from: <http://www.intechopen.com/books/special-topics-in-cardiac-surgery/conduit-selection-for-coronary-artery-bypass-grafting>

**INTECH**  
open science | open minds

### **InTech Europe**

University Campus STeP Ri  
Slavka Krautzeka 83/A  
51000 Rijeka, Croatia  
Phone: +385 (51) 770 447  
Fax: +385 (51) 686 166  
[www.intechopen.com](http://www.intechopen.com)

### **InTech China**

Unit 405, Office Block, Hotel Equatorial Shanghai  
No.65, Yan An Road (West), Shanghai, 200040, China  
中国上海市延安西路65号上海国际贵都大饭店办公楼405单元  
Phone: +86-21-62489820  
Fax: +86-21-62489821

© 2012 The Author(s). Licensee IntechOpen. This is an open access article distributed under the terms of the [Creative Commons Attribution 3.0 License](#), which permits unrestricted use, distribution, and reproduction in any medium, provided the original work is properly cited.

IntechOpen

IntechOpen