

# We are IntechOpen, the world's leading publisher of Open Access books Built by scientists, for scientists

6,900

Open access books available

186,000

International authors and editors

200M

Downloads

Our authors are among the

154

Countries delivered to

TOP 1%

most cited scientists

12.2%

Contributors from top 500 universities



WEB OF SCIENCE™

Selection of our books indexed in the Book Citation Index  
in Web of Science™ Core Collection (BKCI)

Interested in publishing with us?  
Contact [book.department@intechopen.com](mailto:book.department@intechopen.com)

Numbers displayed above are based on latest data collected.  
For more information visit [www.intechopen.com](http://www.intechopen.com)



# Iatrogenic Bile Duct Injuries Following Laparoscopic Cholecystectomy: Myth or Reality? A Recent Literature Review from 2006 to 2011

Giovanni Conzo, Salvatore Napolitano, Giancarlo Candela, Antonietta Palazzo, Francesco Stanzione, Claudio Mauriello and Luigi Santini  
*7th Division of General Surgery, School of Medicine  
 Second University of Naples, Naples  
 Italy*

## 1. Introduction

At the end of 1980's, the introduction of miniminvasive surgery in clinical practice represented a significant achievement of science and technology research, and laparoscopic cholecystectomy (LC) is nowadays considered a gold standard in the treatment of symptomatic cholelithiasis, according to well known and acknowledged advantages. Although experience is essential to avoiding rates of morbidity in any surgical procedure, in LC the effect of the learning curve does not seem to be the most important factor in minimizing the possibility of iatrogenic bile duct injuries (IBDI) because most of them are related to anatomic misdiagnoses and lapses from basic principles of biliary surgery. IBDI are still a severe complication of biliary surgery, characterized by high morbidity and in some cases significant mortality, often due to the onset of septic complications. They cause a costs rise, related to diagnostic and therapeutic procedures, and they are often associated with distressing litigations, frustrating for surgeons. Factors that may be related to IBDI include certain pitfalls believed to be inherent in the laparoscopic approach: the two-dimensional view and the absence of tactile sensation. However, an analysis of literature until 2005 shows that the "mini-invasive" approach is related to a higher incidence of iatrogenic bile duct injuries (IBDI), both of the main and accessory bile ducts. In 2002 Nuzzo (Nuzzo, 2002), by the means of an Italian survey, proved a three times higher incidence of IBDI than in open cholecystectomy (OC), showing about 300 bile duct injuries out of every 100000 cholecystectomies per year in Italy, pointing out in that country a considerable mortality, in most of cases related to sepsis, with a significant rise of morbidity and healthcare costs ensuing from hospital stay, instrumental investigations, and medium and long-term clinical follow-up. Moreover, IBDI are reported to have late severe aftermath, causing the surgeon frustration and expensive litigation. After accomplishing a learning curve for mini-invasive approach, led by an experienced surgeon, the most significant etiopathogenetic factors of IBDI are the misidentification of the main biliary tree (BT) and wrong manoeuvres to manage bleedings. Treatment of IBDI requires a multidisciplinary approach – namely endoscopy, interventional radiology and surgery – in referral centres,

because in most cases the proper repair represents often the ultimate intervention to the patient. Whenever a surgical treatment is required – for “major” injuries – hepaticojejunostomy represents the best choice, but options are described as T-tube drainage, liver resections and even liver transplantation, confirming their potential extreme seriousness. Patients undergoing reparative interventions, following IBDI, require frequently a cholestasis evaluation by long-term clinical, biochemical and imaging follow-up (> 10 years), because of the possible onset of long term complications (anastomotic strictures, secondary biliary cirrhosis), that produce a significant growth of expenditures. Authors performed a meta-analysis of most recent reviews articles of the last five years, with the aim of assessing the real incidence of this issue during these late years.

## 2. Methods

A Pubmed database search was performed to identify the most recent articles from 2006 to 2011, about IBDI following cholecystectomy, using the keywords “laparoscopic cholecystectomy”, “small-incision cholecystectomy”, “open cholecystectomy”, “iatrogenic bile duct injuries”, “biliary fistulas”, “iatrogenic biliary strictures”, and “cholestasis”. Additional papers, among the most important and cited in literature, reporting incidence of BDI following LCs, were individually searched for, excluding case report articles. These data are purely descriptive and no statistical analysis was performed. We excluded “Single-Port cholecystectomy” from our research. By the means of this research, authors examined the incidence, the main risk factors, the mechanisms of bile duct injuries, the diagnostic work-up and the management, in order to provide the most recent results about this issue.

## 3. Classification of IBDI

At present several classifications of IBDI have been proposed with the aim of standardizing the assessment, planning treatment and evaluating the outcome. Nevertheless, none of these have been universally accepted as a standard. Some of these classifications are based on the anatomical level of the lesion (Strasberg et al., 1995), (Bismuth, 1982), (Neuhaus et al., 2000), (Csendes et al., 2001), (McMahon et al., 1995), (Siewert et al., 1994), (Frattaroli et al., 1996) and (Bergman et al., 1996) and on the kind of repair required. On the other hand, other classifications - (Bektas et al., 2007), (Lau & Lei, 2007), (Kapoor, 2008), (Stewart-Way, 2004) - also assess hilar vascular lesions associated in IBDI, which could jeopardize their management and overall morbidity. None of them include factors such as sepsis, haemodynamic status or comorbidities, which affect remarkably long-term outcome. The most commonly used is Strasberg classification (1995), which incorporates the previous classification of Bismuth (1982). The development of these two classifications kept up with the operative technique, because thanks to LC, IBDI became more complex and more proximal than in OC, so requiring an assessment both of site and type of lesion, from the transection through wrong closures, up to strictures. The authors prefer Strasberg classification not only for its feasibility to figure out the proper treatment, but also because most vascular injuries occurring in LC don't modify the repair technique of the biliary tree. Type A injuries include cystic duct leakage or leakage from canalicula in the liver bed, and these can be treated by endoscopy (papillotomy and prosthesis). Type B consists of partial occlusion of the biliary tree, mainly caused by the closure of an aberrant right hepatic duct. Type C includes the transection without ligation of the aberrant right hepatic duct. Type D describes partial damages to a major hepatic duct. Types E

injuries are further subdivided into E1 through E5 according to the previous Bismuth classification: E1, transection of bile duct > 2 cm from the hilum; E2, transection of bile duct < 2 cm from the hilum; E3 and E4 represent stricture at the same level or above the confluence of hepatic ducts; E5 injuries describe involvement of an aberrant right sectoral duct injury concomitant with a common hepatic duct stricture.

Author	Year	Incidence	Operations
Giger	2006	0,3	22953
Koulas	2006	0,1	925
Plummer	2006	0,02	350
Nickkholgh	2006	0,09	2130
Tan	2006	0,5	202
Ledniczky	2006	0,1	1002
Hussain	2006	0,4	725
Yüksel	2006	0	74
Wenner	2006	0	338
Sarli	2006	0,16	2538
Velanovic	2006	0,25	3285
Hobbs	2006	0,26	19414
Santibane	2006	0,14	6107
Boddy	2007	0,4	4139
Karvonen	2007	0,38	3736
Lien	2007	0,12	5200
Cai	2007	0	629
Marakis	2007	0,16	1225
Yegiyants	2008	0,03	3042
Ibrahim	2008	0,4	1000
Malik	2008	1,67	1132
Yaghoubian	2008	0,7	2470
Georgiad	2008	0,69	2184
Veen	2008	1	1254
Tantia	2008	0,39	13305
Avgerinos	2009	0	1046
Machi	2009	0	1381
Triantafylli	2009	0,1	1009
Priego	2009	0,3	3933
Sanjay	2010	0	447
Yamashita	2010	0,58	n.d
Zha	2010	0,085	13000
Al-Kubati	2010	0,4	336
Ghnnam	2010	0,6	340
Gurusamy	2010	0,95	451
Keus	2010	0,7	2139
Giger	2011	0,3	31838
Pfluke	2011	0	65
Hamad	2011	0,18	2714
Harrison	2011	0,25	234220
Harboe	2011	0,2	20307
Stanisić	2011	0,2	386

Table 1. Incidence of IBDI reported in the literature from 2006 to 2011. Median incidence: 0,2% - Total amount of patients: 412585.

4. Analysis of IBDI incidence

Since its introduction over 20 years ago, population-based studies have reported a significant increase of IBDI incidence following LC, compared to open technique, ranging from 0,1% to 1,7%. About this issue, in Italy Nuzzo (Nuzzo et al., 2002) reported a three times higher incidence (0,3% vs 0,1%) compared to the conventional approach. Consequently, IBDI during LCs became an important issue in the field of surgical pathology. Although there was no evidence of superiority over open technique, soon after its introduction LC became the standard treatment of cholecystectomy (NIH Consensus Conference 1993). The rising popularity was based on assumed lower morbidity and complication proportions, and a quicker postoperative recovery compared to open technique (Sheha, 1996). However, the reviewed studies were non-randomised trials, with no fair assessment of the effects of the interventions. Authors carried out a survey of studies published from 2006 to 2011 (Table 1) (Figure 1), showing in the several surgical experiences an higher incidence during the early stage of learning, a following period of stabilisation, and an eventual decrease when the amount of LCs rose (Figure 2). In disagreement with this point of view, Giger (Giger, 2011) in a retrospective ten years survey (from 1995 to 2005) did not report a decrease of IBDI rates (0,3%), in spite of the assistance of the intraoperative cholangiography (IOC), considered useful for preventing iatrogenic injuries. However,

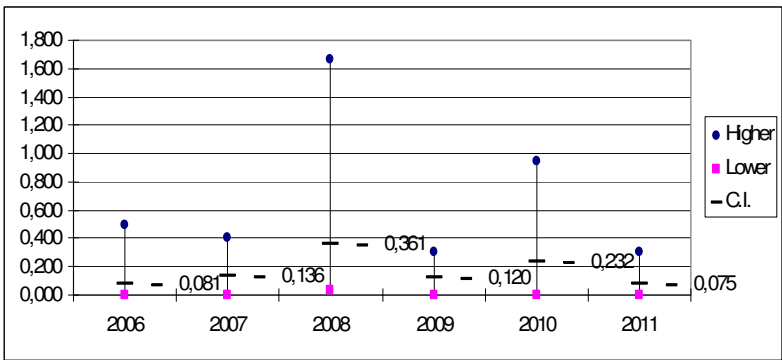


Fig. 1. IBDI incidence: analysis of literature from 2006 to 2011 C.I.: Confidence Interval 95%

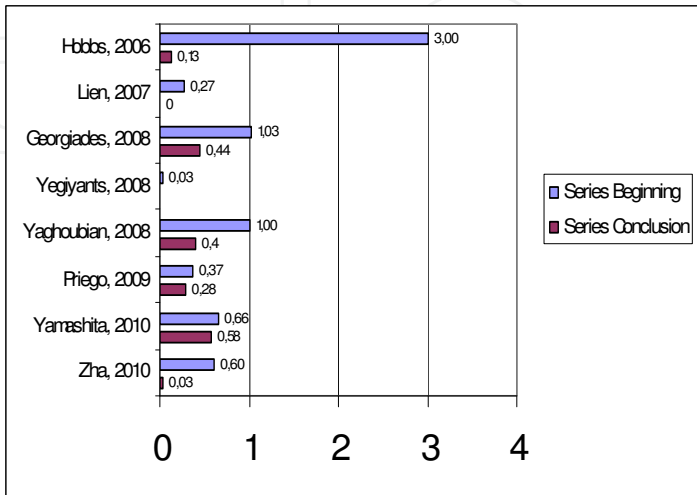


Fig. 2. IBDI incidence: relationship with surgical experience

several studies (with no statistical evidence) hypothesize that the regular practice of critical view of safety (CVS)- a codified dissection technique showing the anatomic elements of Calot's triangle- could cause a decrease of IBDI rates (Yamashita 2010, Yegiyants 2008, Avgerinos 2009, Sanjay 2010). Instead, Strasberg himself mentioned the lack of evidence of CVS for preventing IBDI, although surely a great step toward a safer LC, but it is unclear whether the CVS alone is sufficient as a technique to minimize the risk of IBDI. Also, by way of example, major IBDI continue to occur in the Netherlands despite increasing adoption of the CVS technique (de Reuver, 2007). Gurusamy (Gurusamy, 2010), in a meta-analysis of randomized clinical trials of LCs for acute cholecystitis, reports lower IBDI rates in early treated patients (0,5%) compared to delayed interventions (1,4%). Minor IBDI rates are also decreased according to Yüksel (Yüksel, 2006) (3% vs 4,6%). Boddy (Boddy, 2007) in a ten year series of 4139 LCs, reported lower rates of IBDI for hepatopancreaticobiliary surgeons (0,1%) in comparison to general surgery consultants (0,9%). Another controversial factor is the use of IOC: some authors recommend its routinary employment (Nickkholgh, 2006 - BDI 0,09%), others (Sarli, 2006) report no disadvantages with a selective use (IBDI 0,16%). About the influence of workload on surgeons efficiency, Yaghoubian (Yaghoubian, 2008) reports a decrease from 1% to 0,4% of IBDI, after implementation of the 80-hour workweek in his hospital. Two studies examine surgeon's experience as factor affecting IBDI incidence: Hobbs (Hobbs, 2006) reports a decrease of IBDI from 1994 to 1998 (from 0,35% to 0,13%), ascribing 1/3 of IBDI of his centre to surgeons with < 200 operations in the previous 5 years ; Harrison (Harrison, 2011), after analysing a 234280 LCs series, does not report any difference (IBDI 0,24% vs 0,26%) between rates of experienced surgeons compared to residents. Concerning the surgical approach, Keus' (Keus, 2010) Cochrane Review compares open, small-incision, and laparoscopic cholecystectomies, evaluating only randomized trials. In this study there is no statistical evidence of IBDI rates among the three approaches, with laparoscopic IBDI rates that range from 0,2% to 1,4%. However, the trials analysed in the review, statistically compelling, do not include acute cholecystitis as indication, but embrace minor injuries in IBDI rates, as self-limiting bile leakage, whereupon rates are as high as 1,4%. Intraoperative ultrasonography (IOUS) seems to be an effective tool in reducing IBDI rates (Machi, 2009 - BDI: 0%, 1381 LCs), but unfortunately there are few studies about this technique, which requires a long learning curve (according to the author, > 100 procedures) discouraging its widespread. As one can infer from Table 1, showing incidences from the total amount of 412585 LCs performed in several international centres, the median estimated incidence is 0,2%, certainly lower than those reported before 2006. Nevertheless, it's difficult to establish if currently this value of incidence is equal to that reported in OCs, sometimes reported as low as 0,1%. In conclusion, according to authors' analysis, it seems that during the last years IBDI incidence following LCs is lower than that reported in the previous fifteen years since the approach was introduced in 1987. This occurrence could be related to the wider experience of the several centres, to the spread of better technologies, and likely a greater concern and a careful sensitivity of surgeons' community toward this issue.

## 5. Risk factors

Several risk factors are related to IBDI, which can be classified as patient factors, local factors due to illness, and extrinsic factors, related to the surgeon and his operative technique. Patient factors are male gender, advanced age and obesity (Waage, 2006). Local factors include: congenital malformations, such as partial liver agenesis (Fields, 2008); anatomical



anomalies of the biliary tract (BT) (Colovic, 2009), concerning both the proximality and the confluence between the cystic duct and the main BT, which may be angular (75%), parallel (20%) or spiral (5%), so jeopardizing its dissection (Strasberg, 2008); inflammatory conditions, such as acute cholecystitis, that increases up to three times the risk of IBDI with a 5% rate, are the most important predisposing factor for IBDI in LC (Kitano, 2002). The reason of this rate is what Strasberg name “hidden cystic duct syndrome”, or otherwise “second cystic duct syndrome”. When the surgeon dissects the infundibulum to identify the cystic duct as first step (infundibular technique), without first isolating Calot structures, the hepatocholedochus may be confused with a false cystic duct, and sectioned. This misidentification is more likely with acute and chronic inflammation, large stones impacted in the infundibulum, adhesions between gallbladder and choledochus or intrahepatic gallbladder (Chapman, 2003). These last conditions are related to extrinsic factors, too. In fact, when anatomy is not clear, dissective technique must be meticulous. So surgeon must not only isolate infundibulum, but also accurately prepare Calot triangle before cutting any structure, in order to avoid IBDI. In LC they are more proximal, and sometimes associated with vascular injuries, often depending on the right hepatic artery. The incidence of vascular injuries during LC is 61% in the series by Koffron (Koffron, 2001) and 47% in the series by Belghiti (Alves, 2003). It is still controversial the possible influence of the associated vascular lesion on the outcome of the surgical biliary diversion. In LC the learning curve seems to be the most important factor for minimising IBDI rates (Archer, 2001). Even surgeon’s tiredness has been implicated as a risk factor for IBDI (Yaghoubian, 2008), as testified by decreased incidence with work hour restrictions.

## 6. How to prevent IBDI

Principles for a correct technique in laparoscopic approach, for preventing IBDI, were largely described since the beginning of laparoscopic era. Use of a 30° camera, avoiding thermocoagulation near the main BT, a meticulous dissection, an accurate haemostasis and eventually conversion to open surgery, whenever is not possible to figure out clearly the anatomy, all of these represent well-known and precious dogmas (Troidl, 1999). During LC correct identification of the cystic duct can be made easier in complex cases by several methods. Routinely intraoperative Cholangiography (Traverso, 2006) can show the whole biliary tract, including any anomaly; it can verify the existence of IBDI, leading quickly to treatment. Many authors state that unfortunately many lesions have already been made at time of the radiological investigation, but nonetheless this represents a meaningful step because an early diagnosis is helpful in the outcome of repair. The critical view technique, described by Strasberg in 1995, consists of the identification of the cystic duct and cystic artery through dissection of the upper border of the Calot triangle along the underside of the gallbladder, thereby exposing the base of the liver. Once this view has been achieved, these two structures will be the only entering the gallbladder. Exposing the inner layer of the subserosa could be useful, further optimising the critical view, either for aberrant ducts or swollen gallbladder (Mirrizzi, 1992). The infundibular technique is based on the identification of the cystic duct where it joins the infundibulum. Some authors still recommend this technique, if routinely assisted by the intraoperative cholangiography. It is currently the most widely used and maybe quickest technique, but it has the drawback of not preventing IBDI because of lacking of the contemporary assessment of cystic duct and

main BT (an hot point of the hidden cystic duct syndrome). The Fisher method consists of dissecting the gallbladder from the gallbladder bed starting from the bottom to the infundibulum, as in open surgery. Since cystic artery is ligated at the end of this step, this procedure is more bleeding, thereby more dangerous. The use of intraoperative laparoscopic ultrasound represents another method to prevent IBDI. It is a really interesting diagnostic tool, even if it requires an equipped operating room and highly trained staff. A multicentre study by Machi (Machi, 2009) highlighted his usefulness. However, its advantages are unclear compared to the intraoperative cholangiography, neither they submit a standardized technique. So its effectiveness has to be demonstrated, because it is more expensive than cholangiography, highly operator-dependent and not available in every hospital.

## 7. Diagnosis

Early diagnosis of IBDI is of primary importance, and decisive as well for the long-term results after treatment. IBDI are noticed intraoperatively only in few cases, often by means of bile leaking, allowing an early repair. Unfortunately, in most cases, at times after days or weeks after intervention, diagnosis is accomplished lately, due to the onset of abdominal pain, fever, jaundice, and septic syndrome. An unusual postoperative course may be a warning sign of IBDI. Postoperative diagnosis must be assessed by clinical exam, lab values (cholestasis) and imaging techniques. Liver function tests after bile duct injury may show cholestasis by the rise of Gamma-Glutamyl Transpeptidase (GGT) and Alkaline Phosphatase (ALP). However, these tests may often be in the normal range. In patients with biliary stricture or complete occlusion, bilirubin is elevated, while in bile leakage, bilirubin may be normal or only mildly elevated, after absorption of bile from the peritoneal cavity (Lau, 2010). Intraoperative recognition of bile duct injuries and its immediate repair is highly advantageous in preventing serious complications (sepsis) and increase repair success rates (Lohan, 2005). Unfortunately, diagnosis is intraoperative only in 10% to 30% of cases (Lee, 2000), while most of them are recognized postoperatively, with patients sometimes complaining of vague abdominal symptoms, 48h after the intervention (biliary abdominal collections, jaundice, anorexia, elevation of cholestasis and liver enzyme values) (Lillemoe, 2006). Finally, we can have delayed diagnosis for cases that often become more complex and with poor prognosis, recognized after a week to months since intervention, with recurrent cholangitis, obstructive jaundice up to secondary biliary cirrhosis (Sicklick, 2005). Ultrasonography is the first investigation which can show fluid collections and dilatation of the biliary tract, but reveals neither the site and seriousness of the lesion nor a coexisting vascular injury, for what Computed tomography with contrast agent is recommended. Scanning with iminodiacetic acid (HIDA scan) can only diagnose bile leaks. MR-cholangiography is at present a fundamental investigation that allows to identify leaks from small biliary radicals or cystic duct stump, together with the presence of arterial injuries and choledocholithiasis. MR- cholangiography with manganese is an efficient method to reveal IBDI, but series in literature (Khalid, 2001) are few. Cholangiography, both percutaneous transhepatic (PTC) and endoscopic (ERCP), is the gold standard for evaluating bile duct injuries, often essential to plan therapeutic procedure. Sometimes they represent the ultimate treatment. In cases of lesion proximal to the hilum, with either transection or aberrant ducts leaking, ERCP cannot show the biliary tract, so that an antegrade Cholangiography by PTCA is indicated (Pawa, 2009).



## 8. Management

Management of bile duct injuries is complex and a multidisciplinary approach in tertiary centres is recommended. In any case, early recognition and treatment of septic complications is of paramount importance. Management can be categorized into non-surgical and surgical, and has to be performed in referral centres because often repair intervention represents the only chance of care for the patient. The therapeutic approach and its timing depend on several factors: the extent of lesion, the experience of the surgeon, the inflammatory and haemodynamic status, all of them jeopardize outcome. It is well known that, an intraoperative recognition of the lesion and its immediate repair offers the best long-term results with a low morbidity, reduced hospital stay and costs. The experience of referral hepato-biliary surgery centres plays an important role, as demonstrated by the better success rates of repair (de Reuver, 2007), especially in case of proximal IBDI associated with vascular injury (Bilge, 2003). Non-surgical management is based on endoscopic procedures (ERCP) and on interventional radiology, often mandatory for repair and less expensive. They require bilioenteric continuity. They are less invasive and more appropriate in patients who are not candidates for surgery (Misra, 2004). Recently the development of different types of biliary prostheses contributed hugely to simplify the management of biliary benign strictures (Ramos-De la Medina, 2008). Endoscopic treatment (papillotomy with stenting) is indicated for type A lesions. Its effectiveness decreases if leaks are more proximal, because of differences in the basal or intraductal pressure, of CD length and BT diameter (Marks, 1998). About surgical management, in case of the complete transection of the common hepatic duct or of choledochus, end-to-side Roux-en-Y hepaticojejunostomy represents the best bilio-enteric anastomosis. The defunctionalised loop avoid intestinal reflux into the BT and prevents ascending cholangitis. The hepatoduodenal anastomosis has an increased anastomotic tension and reflux, and a higher rate of developing high debt biliary fistula (Mercado, 2008). Still controversial is the effectiveness and the duration of a transanastomotic tutor, and it depends on surgeon's experience and choice. In case of complete section, an end-to-end anastomosis on T-tube is not indicated because in almost 50% of cases is followed by biliary stricture (Jarnagin, 2009). Biliary diversion should be preferred when vascular damage is expected, even if section of the bile duct is just partial. A T-tube has therefore only a decompressive function and does not act as a tutor for a bilio-biliary hazardous anastomosis; it can therefore be used only in selected cases such as partial section or lesion with a proper vascularisation. Finally, unfortunately, there are some complications that may require liver transplantation: IBDI associated with recurrent episodes of cholangitis, chronic cholestasis and secondary biliary cirrhosis, and lesions of the hepatic hilar vessels, especially the hepatic artery, which according to some authors can lead to an acute hepatic failure (Fernández, 2004), although this occurs rarely in a liver otherwise healthy because of its double blood supply (Stewart, 2004).

## 9. Hepatico-jejunal anastomosis

A regular evaluation of cholestasis is indicated in patients undergone hepaticojejunostomy, by over ten years lasting follow-up due to the potential onset of long-term complications. The goal of surgical repair of the injured biliary tract is the restoration of a durable bile flow, and the prevention of short- and long-term complications such as biliary fistula, intra-

abdominal abscess, and subsequently biliary stricture, recurrent cholangitis, and secondary biliary cirrhosis. A tension-free Roux-en-Y hepaticojejunostomy is the preferred procedure for the majority of bile duct injuries. Tension-free end-to-end anastomoses are rarely possible, even if the duodenum has been largely mobilized. Moreover, a high rate of restructure has been reported for end-to-end repair of laparoscopic bile duct injuries (Stewart, 1995), sometimes up to 100% of cases. For diathermy injury to the bile duct, the anastomosis should be made proximally near to the confluence of the bile ducts to avoid stricture formation, as a consequence to coagulation injury to the collateral network of blood vessels supplying the CBD/CHD (Lau, 2009). Outcome after HJ is evaluated by cholestasis and liver function tests - the clinical presentation of an anastomotic stricture is cholangitis in almost half of the case, and jaundice or abnormal liver function tests in the other half (Goykhman, 2008), with the potential onset of long-term complications (> 10 years) requiring a further intervention, often transhepatic percutaneous stenting. Factors as ischemia, inflammation, and fibrosis may play a fundamental role in the development of strictures. About long-term outcome, a poor prognostic factor is serum ALP levels higher than 400 UI six months after intervention (Huang, 2003). Independent poor prognostic factors of the HJ outcome are: surgical repair in the presence of active inflammation (peritonitis), injuries at or above the biliary bifurcation, and bile duct injury with concomitant vascular injury. These factors are associated to a significant higher risk of developing severe biliary complications, such as strictures, hepatic abscess, and secondary biliary cirrhosis (Schmidt, 2004). Two thirds of recurrences occur within the first two years from the intervention, but stricture recurrence even after 10 years has also been reported (Sutherland, 1999). The long interval from reconstruction to symptomatic late stricture and liver failure underlines the need for long-term follow-up.

## 10. Conclusions

Analysis of literature related to IBDI following LCs is still difficult and inaccurate, because bile duct injuries are not always standardized, according to the several existing classifications, and as consequence authors do not always specify the type of injury reported. Several papers report laparoscopic techniques with the aim of reducing IBDI, but none of them is absolutely perfect or even better than others, because as a matter of fact IBDI may occur even to the most skilled laparoscopic surgeons. Accordingly, we might suppose that these complications are not exclusively due to unskilfulness below standards, but they are probably related to the limits of the miniminvasive approaches themselves - lack of three-dimensional view and loss of tactile feedback - which could increase operative risks. In other words, compared to a recent pastime, from 1987 to 2005, during which IBDI following LCs had a huge rise, estimated in Italy as high as between 0,3% vs 0,1% (an amount of 300 IBDI per year out of every 90000 LCs), according to the most recent literature a decreasing trend is reported. Everyone must trust in a leading concept: during the first dissection phases, in case of unclarified anatomy, the surgeon must not hesitate about converting, with the aim of carrying out a safer intervention, because of the potential hazard of IBDI. LC is still an ideal approach for symptomatic cholelithiasis, but a cholecystectomy through a "wide subcostal laparotomy" is indicated as well, if preserving from a bile duct injury, which is at present a dreadful complication in terms of morbidity, mortality and social costs. Diffusion and sharing of such principles among surgeons and patients likely represent the

most efficient strategy to prevent IBDI. IBDI following LC represent a delicate and interesting chapter in hepato-biliary surgery. They are characterized by high morbidity and sometimes mortality, especially caused by septic complications. The pastime higher incidence seems decreasing and close to that described in traditional surgery, likely due to a better knowledge of the mini-invasive approach and an improved sensitivity toward this issue by the surgical community. Nonetheless they are still causing an increase in healthcare costs because of the investigation, the management and the hospital stay, and moreover for legal issues frustrating to surgeons. Among diagnostic tools, MR Cholangiography is thought to be very important for a suitable biliary-vascular study, but is often followed by second level invasive procedures, that sometimes represent an effective therapeutic option. An early diagnosis is directly related to outcome of the repair, that must be multidisciplinary - endoscopy, interventional radiology, and surgery - in referral centres, because frequently the patient has an unique therapeutic chance. For "major" lesions, Hepaticojejunostomy is the intervention of choice, whereas a T-tube diversion is indicated for selected patients, because of long-term biliary strictures. A regular evaluation of cholestasis is indicated in these cases by means of over ten years follow-up. In case of IBDI, irrespective of biliary repair, the early recognition and treatment of the septic complications, that often rise up mortality, is the most important aim on planning diagnostic and therapeutic work-up.

## 11. References

- Al-Kubati, WR. Bile duct injuries following laparoscopic cholecystectomy: A clinical study. *Saudi Journal of Gastroenterology*, Vol. 16, No. 2, (April - June 2010), pp. 100-104
- Alves, A., Farges, O., Nicolet, J., Watrin, T., Sauvanet, A. & Belghiti, J. Incidence and consequence of an hepatic artery injury in patients with postcholecystectomy bile duct strictures. *Annals of Surgery*, Vol. n.d., No. 238, (2003), pp. 93-96
- Archer, SB., Brown, DW., Smith, CD., Branum, GD. & Hunter, JG. Bile duct injury during laparoscopic cholecystectomy: results of a national survey. *Annals of Surgery*, Vol. n.d., No. 234, (2001), pp. 549-558
- Avgerinos, C., Kelgiorgi, D., Touloumis, Z., Baltatzi, L. & Dervenis, C. One thousand laparoscopic cholecystectomies in a single surgical unit using the "critical view of safety" technique. *Journal of Gastrointestinal Surgery*, Vol. 13, No. 3, (March 2009), pp. 498-503
- Bektas, H., Schrem, H., Winny, M. & Klempnauer, J. Surgical treatment and outcome of iatrogenic bile duct lesions after cholecystectomy and the impact of different clinical classification systems. *British Journal of Surgery*, Vol. n.d., No. 94, (2007), pp. 1119-1127
- Bergman, JJ., Van den Brink, GR., Rauws, EA., De Wit, L., Obertop, H., Huibregtse, K., et al. Treatment of bile duct lesions after laparoscopic cholecystectomy. *Gut*, Vol. n.d., No. 38, (1996), pp. 141-147
- Bilge, O., Bozkiran, S., Ozden, I., Tekant, Y., Acarli, K., Alper, A. & et al. The effect of concomitant vascular disruption in patients with iatrogenic biliary injuries. *Langenbeck's Archives of Surgery*, Vol. n.d., No. 388, (2003), pp. 265-269
- Bismuth, H. (1982) Postoperative strictures of the bile ducts. *The Biliary Tract*, Churchill-Livingstone, New York, NY, pp. 208-209

- Boddy, AP., Bennett, JM., Ranka, S. & Rhodes, M. Who should perform laparoscopic cholecystectomy? A 10-year audit. *Surgical Endoscopy*, Vol. 21, No. 9, (September 2007), pp. 1492-1497
- Cai, XJ., Gu, XJ., Wang, YF., Yu, H. & Liang, X. Experience in laparoscopic cholecystectomy by exposing common hepatic duct using blunt dissection to prevent bile duct injury. *Zhonghua Yi Xue Za Zhi*, Vol. 87, No. 20, (May 2007), pp. 1425-1426
- Chapman, WC., Abecassis, M., Jarnagin, W., Mulvihill, S. & Strasberg, SM. Bile duct injuries 12 years after the introduction of laparoscopic cholecystectomy. *Journal of Gastrointestinal Surgery*, Vol. n.d., No. 7, (2003), pp. 412-416
- Colovic, RB. Isolated segmental, sectoral and right hepatic bile duct injuries. *World Journal of Gastroenterology*, Vol. n.d., No. 15, (2009), pp. 1415-1419
- Csendes, A., Navarrete, C., Burdiles, P. & Yarmuch, J. Treatment of common bile duct injuries during laparoscopic cholecystectomy: endoscopic and surgical management. *World Journal of Surgery*, Vol. n.d., No. 25, (2001), pp. nd
- de Reuver, PR., Grossmann, I., Busch, OR., Obertop, H., Van Gulik, TM. & Gouma DJ. Referral pattern and timing of repair are risk factors for complications after reconstructive surgery for bile duct injury. *Annals of Surgery*, Vol. n.d., No. 245, (2007), pp. 763-770
- de Reuver, PR., Wind, J., Cremers, JE., Busch, OR., van Gulik, TM. & Gouma, DJ. Litigation after laparoscopic cholecystectomy: an evaluation of the Dutch arbitration system for medical malpractice. *Journal of the American College of Surgeons*, Vol. 206, No. 2, (February 2008), pp. 328-334
- de Santibañes, E., Palavecino, M., Ardiles, V. & Pekolj, J. Bile duct injuries: management of late complications. *Surgical Endoscopy*, Vol. 20, No. 11, (November 2006), pp. 1648-1653
- Fernández, JA., Robles, R., Marín, C., Sánchez-Bueno, F., Ramírez, P. & Parrilla, P. Laparoscopic iatrogeny of the hepatic hilum as an indication for liver transplantation. *Liver Transplantation*, Vol. n.d., No. 10, (2004), pp. 147-152
- Fields, RC., Heiken, JP. & Strasberg SM. Biliary injury after laparoscopic cholecystectomy in a patient with right liver agenesis: case report and review of the literature. *J Gastrointestinal Surgery*, Vol. n.d., No. 12, (2008), pp. 1577-1581
- Frattaroli, FM., Reggio, D., Guadalajara, A., Illomei, G. & Pappalardo, G. Benign biliary strictures: a review of 21 years of experience. *Journal of the American College of Surgeons*, Vol. n.d., No. 183, (1996), pp. 506-513
- Ghnam, W., Malek, J., Shebl, E., Elbeshry, T. & Ibrahim, A. Rate of conversion and complications of laparoscopic cholecystectomy in a tertiary care center in Saudi Arabia. *Annals of Saudi Medicine*, Vol. 30, No. 2, (March - April 2010), pp. 145-148
- Giger, UF., Michel, JM., Opitz, I., Th Inderbitzin, D., Kocher, T., Krähenbühl, L. & Swiss Association of Laparoscopic and Thoracoscopic Surgery (SALTS) Study Group. Risk factors for perioperative complications in patients undergoing laparoscopic cholecystectomy: analysis of 22,953 consecutive cases from the Swiss Association of Laparoscopic and Thoracoscopic Surgery database. *Journal of the American College of Surgeons*, Vol. 203, No. 5, (November 2006), pp. 723-728
- Giger, U., Ouaisi, M., Schmitz, SF., Krähenbühl, S. & Krähenbühl, L. Bile duct injury and use of cholangiography during laparoscopic cholecystectomy. *British Journal of Surgery*, Vol. 98, No. 3, (March 2011), pp. 391-396



- Goykhman, Y., Kory, I., Small, R., Kessler, A., Klausner, JM., Nakache, R. & Ben-Haim, M. Long-term Outcome and Risk Factors of Failure after Bile Duct Injury Repair. *Journal of Gastrointestinal Surgery*, Vol. n.d., No. 12, (2008), pp. 1412-1417
- Gurusamy, K., Samraj, K., Gluud, C., Wilson, E. & Davidson, BR. Meta-analysis of randomized controlled trials on the safety and effectiveness of early versus delayed laparoscopic cholecystectomy for acute cholecystitis. *British Journal of Surgery*, Vol. 97, No. 2, (February 2010), pp. 141-150
- Hamad, MA., Nada, AA., Abdel-Atty, MY. & Kawashti, AS. Major biliary complications in 2,714 cases of laparoscopic cholecystectomy without intraoperative cholangiography: a multicenter retrospective study. *Surgical Endoscopy*, Vol. n.d., No. 8, (June 2011), pp. n.d.
- Harboe, KM. & Bardram, L. The quality of cholecystectomy in Denmark: outcome and risk factors for 20,307 patients from the national database. *Surgical Endoscopy*, Vol. 25, No. 5, (May 2011), pp. 1630-1641
- Harrison, VL., Dolan, JP., Pham, TH., Diggs, BS., Greenstein, AJ., Sheppard, BC. & Hunter, JG. Bile duct injury after laparoscopic cholecystectomy in hospitals with and without surgical residency programs: is there a difference? *Surgical Endoscopy*, Vol. 25, No. 6, (June 2011), pp. 1969-1974
- Hobbs, MS., Mai, Q., Knuiman, MW., Fletcher, DR. & Ridout, SC. Surgeon experience and trends in intraoperative complications in laparoscopic cholecystectomy. *British Journal of Surgery*, Vol. 93, No. 7, (July 2006), pp. 844-853
- Huang, CS., Lein, HH., Tai, FC. & Wu, CH. Long-term results of major bile duct injury associated with laparoscopic cholecystectomy. *Surgical Endoscopy*, Vol. n.d., No. 17, (2003), pp. 1362-1367
- Hussain, MI. & Khan, AF. Outcome of laparoscopic cholecystectomy in acute and chronic cholecystitis. *Saudi Medical Journal*, Vol. 27, No. 5, (May 2006), pp. 657-660
- Ibrahim, S., Tay, KH., Lim, SH., Ravintharan, T. & Tan, NC. Analysis of a structured training programme in laparoscopic cholecystectomy. *Langenbeck's Archives of Surgery*, Vol. 393, No. 6, (November 2008), pp. 943-948
- Jarnagin, WR. & Blumgart, LH. Operative repair of bile duct injuries involving the hepatic duct confluence. *Archives Surgery*, Vol. 134, No. 7, (July 1999), pp. 769-775
- Kapoor, VK. New classification of acute bile duct injuries. *Hepatobiliary & pancreatic diseases international*, Vol. n.d., No. 7, (2008), pp. 555-556
- Karvonen, J., Gullichsen, R., Laine, S., Salminen, P. & Grönroos, JM. Bile duct injuries during laparoscopic cholecystectomy: primary and long-term results from a single institution. *Surgical Endoscopy*, Vol. 21, No. 7, (July 2007), pp. 1069-1073
- Keus, F., Gooszen, HG. & van Laarhoven, CJ. Open, small-incision, or laparoscopic cholecystectomy for patients with symptomatic cholecystolithiasis. An overview of Cochrane Hepato-Biliary Group reviews. *Cochrane database of systematic reviews*, Vol. 20, No. 1, (January 2010), pp. n.d.
- Khalid, TR., Casillas, VJ., Montalvo, BM., Centeno, R. & Levi, JU. Using MR cholangiopancreatography to evaluate iatrogenic bile duct injury. *AJR. American journal of roentgenology*, Vol. n.d., No. 177, (2001), pp. 1347-1352
- Kitano, S., Matsumoto, T., Aramaki, M. & Kawano, K. Laparoscopic cholecystectomy for acute cholecystitis. *Journal of hepato-biliary-pancreatic surgery*, Vol. n.d., No. 9, (2002), pp. 534-537



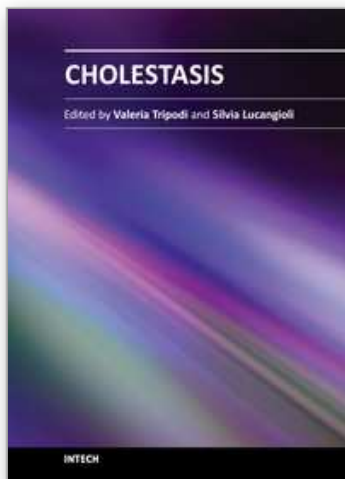
- Koffron, A., Ferrario, M., Parsons, W., Nemcek, A., Saker, M. & Abecassis, M. Failed primary management of iatrogenic biliary injury: incidence and significance of concomitant hepatic arterial disruption. *Surgery*, Vol. n.d., No. 130, (2001), pp. 722-728
- Koulas, SG., Tsimoyiannis, J., Koutsourelakis, I., Zikos, N., Pappas-Gogos, G., Siakas, P. & Tsimoyiannis, EC. Laparoscopic cholecystectomy performed by surgical trainees. *JSLS : Journal of the Society of Laparoendoscopic Surgeons / Society of Laparoendoscopic Surgeons*, Vol. 10, No. 4, (October - December 2006), pp. 484-487
- Lau, WY. & Lai, EC. Classification of iatrogenic bile duct injury. *Hepatobiliary & pancreatic diseases international*, Vol. n.d., No. 6, (2007), pp. 459-463
- Lau, WY., Lai, EC. & Lau, SH. Management of bile duct injury after laparoscopic cholecystectomy: a review. *ANZ Journal of Surgery*, Vol. 80, No. 1-2, (January 2010), pp. 75-81
- Ledniczky, G., Fiore, N., Bognár, G., Ondrejka, P. & Grosfeld, JL. Evaluation of perioperative cholangiography in one thousand laparoscopic cholecystectomies. *Chirurgia (Bucur)*, Vol. 101, No. 3, (May - June 2006), pp. 267-272
- Lee, CM., Stewart, L. & Way, LW. Postcholecystectomy abdominal bile collections. *Archives of Surgery*, Vol. 135, No. 5, (2000), pp. 538-544
- Lien, HH., Huang, CC., Liu, JS., Shi, MY., Chen, DF., Wang, NY., Tai, FC. & Huang, CS. System approach to prevent common bile duct injury and enhance performance of laparoscopic cholecystectomy. *Surgical laparoscopy, endoscopy & percutaneous techniques*, Vol. 17, No. 3, (June 2007), pp. 164-170
- Lillemoe, KD. Evaluation of suspected bile duct injuries. *Surgical Endoscopy*, Vol. n.d., No. 20, (2006), pp. 1638-1643
- Lohan, D., Walsh, S., McLoughlin, R. & et al. Imaging of the complications of laparoscopic cholecystectomy. *European Radiology*, Vol. 15, No. 5, (2005), pp. 904-912
- Machi, J., Johnson, JO., Deziel, DJ., Soper, NJ., Berber, E., Siperstein, A., Hata, M., Patel, A., Singh, K. & Arregui, ME. The routine use of laparoscopic ultrasound decreases bile duct injury: a multicenter study. *Surgical Endoscopy*, Vol. 23, No. 2, (February 2009), pp. 384-388
- Malik, AM., Laghari, AA., Talpur, AH. & Khan, A. Iatrogenic biliary injuries during laparoscopic cholecystectomy. A continuing threat. *International journal of surgery*, Vol. 6, No. 5, (October 2008), pp. 392-395
- Marakis, GN., Pavlidis, TE., Ballas, K., Aimonioutou, E., Psarras, K., Karvounaris, D., Rafailidis, S., Demertzidis, H. & Sakantamis, AK. Major complications during laparoscopic cholecystectomy. *International journal of surgery*, Vol. 92, No. 3, (May - June 2007), pp. 142-146
- Marks, JM., Ponsky, JL., Shillingstad, RB. & Singh, J. Biliary stenting is more effective than sphincterotomy in the resolution of biliary leaks. *Surgical Endoscopy*, Vol. n.d., No. 12, (1998), pp. 327-330
- McMahon, AJ., Fullarton, G., Baxter, JN. & O'Dwyer, PJ. Bile duct injury and bile leakage in laparoscopic cholecystectomy. *British Journal of Surgery*, Vol. n.d., No. 82, (1995), pp. 307-313
- Mercado, MA., Chan, C., Salgado-Nesme, N. & López-Rosales, F. Intrahepatic repair of bile duct injuries. A comparative study. *Journal of Gastrointestinal Surgery*, Vol. n.d., No. 12, (2008), pp. 364-368

- Mirrizzi, PL. La cholangiografía durante las operaciones de las vías biliares. *Boletines y trabajos - Sociedad de Cirugía de Buenos Aires*, Vol. n.d., No. 16, (1932), pp. 1133
- Misra, S., Melton, GB., Geschwind, JF., Venbrux, AC., Cameron, JL. & Lillemoe, KD. Percutaneous management of bile duct strictures and injuries associated with laparoscopic cholecystectomy: a decade of experience. *Journal of the American College of Surgeons*, Vol. n.d., No. 198, (2004), pp. 218-226
- Neuhaus, P., Schmidt, SC., Hintze, RE., Adler, A., Veltzke, W., Raakow, R., et al. Classification and treatment of bile duct injuries after laparoscopic cholecystectomy. *Chirurg*, Vol. n.d., No. 71, (2000), pp. 166-173
- Nickkholgh, A., Soltaniyekta, S. & Kalbasi, H. Routine versus selective intraoperative cholangiography during laparoscopic cholecystectomy: a survey of 2,130 patients undergoing laparoscopic cholecystectomy. *Surgical Endoscopy*, Vol. 20, No. 6, (June 2006), pp. 868-874
- National Institute of Health (NIH) Consensus conference. Gallstones and laparoscopic cholecystectomy. *Journal of the American Medical Association*, Vol. 269, No. 8, (1993), pp. 1018-1024
- Nuzzo, G. (2002). Le lesioni della via biliare principale. Relazione biennale Atti congresso nazionale S.I.C., Rome, October 2002
- Nuzzo, G., Giuliente, F., Giovannini, I., Ardito, F., D'Acapito, F., Vellone, M., Murazio, M. & Capelli, G. Bile duct injury during laparoscopic cholecystectomy: results of an Italian national survey on 56 591 cholecystectomies. *Archives of Surgery*, Vol. 140, No. 10, (October 2005), pp. 986-992
- Pawa, S. & Al-Kawas, FH. ERCP in the management of biliary complications after cholecystectomy. *Curr Gastroenterol Rep.*, Vol. n.d., No. 11, (2009), pp. 160-166
- Pfluke, JM. & Bowers, SP. Jr. Laparoscopic intraoperative biliary ultrasonography: findings during laparoscopic cholecystectomy for acute disease. *J Laparoendosc Adv Surg Tech A*, Vol. 21, No. 6, (July - August 2011), pp. 505-509
- Plummer, JM., Mitchell, DI., Duncan, ND., McDonald, AH. & Arthurs, M. Bile duct injuries in the laparoscopic era: the University Hospital of the West Indies experience. *West Indian Med J.*, Vol. 55, No. 4, (September 2006), pp. 228-231
- Priego, P., Ramiro, C., Molina, JM., Rodríguez Velasco, G., Lobo, E., Galindo, J. & Fresneda, V. Results of laparoscopic cholecystectomy in a third-level university hospital after 17 years of experience. *Rev Esp Enferm Dig*, Vol. 101, No. 1, (January 2010), pp. 20-30
- Ramos-De la Medina, A., Misra, S., Leroy, AJ. & Sarr, MG. Management of benign biliary strictures by percutaneous interventional radiologic techniques (PIRT). *HPB(Oxford)*, Vol. n.d., No. 10, (2008), pp. 428-432
- Sanjay, P., Kulli, C., Polignano, F. & Tait, I. Optimal surgical technique, use of intra-operative cholangiography and management of acute gallbladder disease: the results of a nationwide survey in the UK and Ireland. *Ann R Coll Surg Engl*, Vol. n.d., No. n.d., (2010), pp. n.d.
- Sarli, L., Costi, R. & Roncoroni, L. Intraoperative cholangiography and bile duct injury. *Surgical Endoscopy*, Vol. 20, No. 1, (January 2006), pp. 176-177
- Schmidt, SC., Langrehr, JM., Hintze, RE. & Neuhaus, P. Long-term results and risk factors influencing outcome of major bile duct injuries following cholecystectomy. *British Journal of Surgery*, Vol. 92, No. n.d., (2005), pp. 76-82

- Shea, JA., Healey, MJ., Berlin, JA., Clarke, JR., Malet, PF., Staroscik, RN., et al. Mortality and complications associated with laparoscopic cholecystectomy. A meta-analysis. *Annals of Surgery* Vol. 224, No. 5, (1996), pp. 609-620
- Sicklick, JK., Camp, MS., Lillemoe, KD. & et al. Surgical management of bile duct injuries sustained during laparoscopic cholecystectomy: perioperative results in 200 patients. Proceedings of the 116th Annual Meeting of the Southern Surgical Association. December 2004. *Ann Surg*, Vol. 241, No. 5, (2005), pp. 786-792
- Siewert, JR., Ungeheuer, A. & Feussner, H. Bile duct lesions in laparoscopic cholecystectomy. *Chirurg*, Vol. n.d., No. 65, (1994), pp. 748-757
- Stanisić, V., Bakić, M., Magdelinić, M., Kolasinac, H., Vlaović, D. & Stijović, B. A prospective evaluation of laparoscopic cholecystectomy in the treatment of chronic cholelithiasis - a five-year experience. *Med Pregl*, Vol. 64, No. 1-2, (January - February 2011), pp. 77-83
- Stewart, L. & Way, LW. Bile duct injuries during laparoscopic cholecystectomy. Factors that influence the results of treatment. *Arch. Surg*, Vol. n.d., No. 130, (1995), pp. 1123-1128
- Stewart, L., Robinson, TN., Lee, CM. et al. Right hepatic artery injury associated with laparoscopic bile duct injury: incidence, mechanism, and consequences. *J Gastrointest Surg*, Vol. 8, No. 5, (2004), pp. 523-530
- Stewart, L., Robinson, TN., Lee, CM., Liu, K., Whang, K. & Way, W. Right hepatic artery injury associated with laparoscopic bile duct injury: incidence, mechanism, and consequences. *J Gastrointest Surg.*, Vol. n.d., No. 8, (2004), pp. 523-530
- Strasberg, SM., Hertl, M. & Soper, NJ. An analysis of the problem of biliary injury during laparoscopic cholecystectomy. *Journal of the American College of Surgeons*, Vol. n.d., No. 180, (1995), pp. 101-125
- Strasberg, SM. Error traps and vasculo-biliary injury in laparoscopic and open cholecystectomy. *J Hepatobiliary Pancreat Surg*, Vol. n.d., No. 15, (2008), pp. 284-292
- Strasberg, SM. & Brunt, LM. Rationale and use of the critical view of safety in laparoscopic cholecystectomy. *J Am Coll Surg*, Vol. 211, No. n.d., (2010), pp. 132-138
- Sutherland, F., Launois, B., Staescu, M., Campion, JP., Spiliopoulos, Y. & Stasik, C. A refined approach to the repair of postcholecystectomy bile duct strictures. *Arch Surg*, Vol. n.d., No. 134, (1999), pp. 299-302
- Tan, JT., Suyapto, DR., Neo, EL. & Leong, PS. Prospective audit of laparoscopic cholecystectomy experience at a secondary referral centre in South Australia. *ANZ J Surg*, Vol. 76, No. 5, (May 2006), pp. 335-338
- Tantia, O., Jain, M., Khanna, S. & Sen, B. Iatrogenic biliary injury: 13,305 cholecystectomies experienced by a single surgical team over more than 13 years. *Surgical Endoscopy*, Vol. 22, No. 4, (April 2008), pp. 1077-1086
- Traverso, LW. Intraoperative cholangiography lowers the risk of bile duct injury during cholecystectomy. *Surgical Endoscopy*, Vol. n.d., No. 20, (2006), pp. 1659-1661
- Triantafyllidis, I., Nikoloudis, N., Sapidis, N., Chrissidou, M., Kalaitidou, I. & Chrissidis, T. Complications of laparoscopic cholecystectomy: our experience in a district general hospital. *Surg Laparosc Endosc Percutan Tech*, Vol. 19, No. 6, (December 2009), pp. 449-458
- Troidl, H. Disasters of endoscopic surgery and how to avoid them: error analysis. *World J Surg*, Vol. n.d., No. 23, (1999), pp. 846-855

- Veen, EJ., Bik, M., Janssen-Heijnen, ML., De Jongh, M. & Roukema, AJ. Outcome measurement in laparoscopic cholecystectomy by using a prospective complication registry: results of an audit. *Int J Qual Health Care*, Vol. 20, No. 2, (April 2008), pp. 144-151
- Velanovich, V., Morton, JM., McDonald, M., Orlando, R. 3rd, Maupin, G., Traverso, LW. SAGES Outcomes Committee. Analysis of the SAGES outcomes initiative cholecystectomy registry. *Surgical Endoscopy*, Vol. 20, No. 1, (January 2006), pp. 43-50
- Waage, A. & Nilsson M. Iatrogenic bile duct injury: a populationbased study of 152 776 cholecystectomies in the Swedish Inpatient Registry. *Arch Surg.*, Vol. n.d., No. 141, (2006), pp. 1207-1213
- Wenner, DE., Whitwam, P., Turner, D., Chadha & A., Degani, J. Laparoscopic cholecystectomy and management of biliary tract stones in a freestanding ambulatory surgery center. *JSLS*, Vol. 10, No. 1, (January – March 2006), pp. 47-51
- Yaghoubian, A., Saltmarsh, G., Rosing, DK., Lewis, RJ., Stabile, BE. & de Virgilio, C. Decreased bile duct injury rate during laparoscopic cholecystectomy in the era of the 80-hour resident workweek. *Archives of Surgery*, Vol. 143, No. 9, (September 2008), pp. 847-851
- Yamashita, Y., Kimura, T. & Matsumoto, S. A safe laparoscopic cholecystectomy depends upon the establishment of a critical view of safety. *Surgery Today*, Vol. 40, No. 6, (June 2010), pp. 507-513
- Yegiyants, S. & Collins, JC. Operative strategy can reduce the incidence of major bile duct injury in laparoscopic cholecystectomy. *American Surgeon*. Vol. 74, No. 10, (October 2008), pp. 985-987
- Yüksel, O., Salman, B., Yilmaz, U., Akyürek, N. & Tatlıcioğlu, E. Timing of laparoscopic cholecystectomy for subacute calculous cholecystitis: early or interval--a prospective study. *Journal of Hepatobiliary and pancreatic Surgery.*, Vol. 13, No. 5, (2006), pp. 421-426

IntechOpen



## **Cholestasis**

Edited by Dr Valeria Tripodi

ISBN 978-953-51-0043-0

Hard cover, 98 pages

**Publisher** InTech

**Published online** 10, February, 2012

**Published in print edition** February, 2012

This book covers different aspects on the understanding of mechanisms, effects, and management of cholestasis. This unique compendium contains important citations, an invaluable amount of research work, and many applications, which are outstanding resources for clinicians, pharmacists, biochemists, upper-level undergraduate, graduate, and continuing-education students who are dedicated to discovering new knowledge on cholestasis.

### **How to reference**

In order to correctly reference this scholarly work, feel free to copy and paste the following:

Giovanni Conzo, Salvatore Napolitano, Giancarlo Candela, Antonietta Palazzo, Francesco Stanzione, Claudio Mauriello and Luigi Santini (2012). Iatrogenic Bile Duct Injuries Following Laparoscopic Cholecystectomy: Myth or Reality? A Recent Literature Review from 2006 to 2011, Cholestasis, Dr Valeria Tripodi (Ed.), ISBN: 978-953-51-0043-0, InTech, Available from: <http://www.intechopen.com/books/cholestasis/iatrogenic-bile-duct-injuries-following-laparoscopic-cholecystectomy-myth-or-reality-literature-revi>

**INTECH**  
open science | open minds

### **InTech Europe**

University Campus STeP Ri  
Slavka Krautzeka 83/A  
51000 Rijeka, Croatia  
Phone: +385 (51) 770 447  
Fax: +385 (51) 686 166  
[www.intechopen.com](http://www.intechopen.com)

### **InTech China**

Unit 405, Office Block, Hotel Equatorial Shanghai  
No.65, Yan An Road (West), Shanghai, 200040, China  
中国上海市延安西路65号上海国际贵都大饭店办公楼405单元  
Phone: +86-21-62489820  
Fax: +86-21-62489821



© 2012 The Author(s). Licensee IntechOpen. This is an open access article distributed under the terms of the [Creative Commons Attribution 3.0 License](https://creativecommons.org/licenses/by/3.0/), which permits unrestricted use, distribution, and reproduction in any medium, provided the original work is properly cited.

IntechOpen

IntechOpen