

# We are IntechOpen, the world's leading publisher of Open Access books Built by scientists, for scientists

6,900

Open access books available

186,000

International authors and editors

200M

Downloads

Our authors are among the

154

Countries delivered to

TOP 1%

most cited scientists

12.2%

Contributors from top 500 universities



WEB OF SCIENCE™

Selection of our books indexed in the Book Citation Index  
in Web of Science™ Core Collection (BKCI)

Interested in publishing with us?  
Contact [book.department@intechopen.com](mailto:book.department@intechopen.com)

Numbers displayed above are based on latest data collected.  
For more information visit [www.intechopen.com](http://www.intechopen.com)



# Current Trend of Off-Pump Coronary Artery Bypass Grafting

Hitoshi Hirose

*Division of Cardiothoracic Surgery, Department of Surgery  
Thomas Jefferson University, Philadelphia PA,  
USA*

## 1. Introduction

Coronary artery bypass grafting (CABG) using cardiopulmonary bypass (CPB) and cardioplegic arrest has been performed safely over several decades. Cardiac surgery under cardiac arrest provides a bloodless stable operative field, that can facilitate anastomosis. In last decade, CABG without CPB, off-pump CABG (OPCAB) has become more common with advances in surgical instruments and technique. This chapter summarizes the surgical technique, risks and benefits of OPCAB.

## 2. Technical aspects

### 2.1 Anesthesia

After standard sternotomy and appropriate graft harvesting, a pericardial well is created. A standard dose of heparin is administered by the anaesthesiologist. The anaesthesia team should be prepared to perform appropriate hemodynamic monitoring. We use transesophageal echocardiography and Swan-Gantz catheters to monitor cardiac function in all patients. Activated clotting time above 350 is sufficient to perform OPCAB; however, a full dose of heparin may be given in cases undergoing emergent conversion to CABG using CPB. The anaesthesiologist should inform the surgical team any abrupt decrease in blood pressure, ST changes on EKG and arrhythmia, because these are signs for possible emergent conversion to CPB.

### 2.2 Retropericardial suture

The patient is placed in the Trendelenburg position and the sternal retractor is open widely. Right side stitches holding the pericardial well are released to minimize compression of the right heart. While the apex of the heart is gently elevated using one hand, retropericardial sutures are placed to support the heart (Figure 1). To minimize hemodynamic instability, we place the first retropericardial stitch into the mid-portion of the diaphragm. The stitch is pulled out to the right side of the lower edge of the skin incision and tightly secured so that the heart is somewhat elevated. The second deep pericardial stitch is applied to the midportion between the inferior vena cava and the left lower pulmonary vein, and the stitch is passed through a rubber catheter so that the heart will not be injured by the retropericardial sutures.

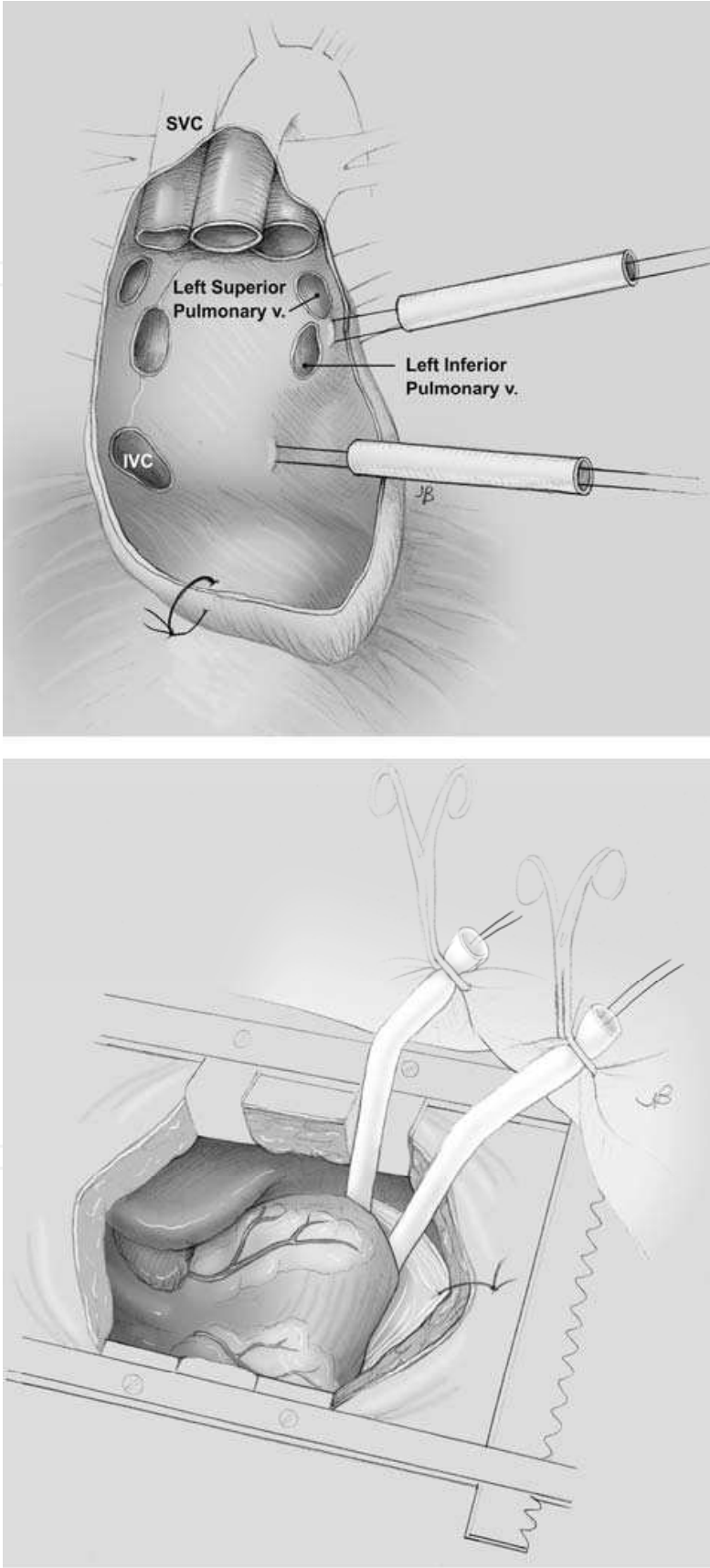


Fig. 1. A model of retropericardial suture.

The third stitch is applied inferior to the left upper pulmonary vein and is also passed through a rubber catheter. Usually three retropericardial sutures are sufficient to support the heart; however, an additional retropericardial suture can be added between the last two retropericardial sutures. An abrupt drop in blood pressure may occur during retropericardial suture placement. This hemodynamics instability is usually transient and injection of a small dose of vasoconstrictor or volume management will be enough to regain blood pressure. ST segment changes on EKG during the heart displacement is often observed in patients with severe left main disease. Preoperative intra-aortic balloon pump (IABP) placement would be helpful to maintain hemodynamic stability. If there is a persistent drop in blood pressure, ST-segment changes, and/or ventricular arrhythmia occurs during the manipulation of the heart, it is an indication to abort the OPCAB and convert to on-pump CABG. If the patient is not tolerating the short period of heart displacement during retropericardial suture placement, the patient most likely would not tolerate a longer period of heart displacement while performing anastomoses. Some surgeons may use suction-cup device to place the heart in an appropriate position. The use of a suction cup device and the use of retropericardial sutures have been proven to have similar effects (Gunnert et al., 2008).

### **2.3 Anterior wall revascularization**

Anastomosis to the left anterior descending artery (LAD) using the internal mammary artery (IMA) graft is key to the success of OPCAB so that the LAD can be perfused after anastomosis. Without the Trendelenburg position, minimal elevation of the left heart with one or two sponges is usually sufficient to approach to the LAD. If the right ventricle is compressed and venous return is decreased, a significant decrease in blood pressure can occur. To avoid stress on the right system, the right pleura may be opened. This allows the heart to herniate into the right pleural space during heart displacement and minimizes the hemodynamic compromise.. After exposure of the target vessel, a suction type coronary stabilizer is placed on the target vessel. Before making coronary arteriotomy, a proximal snare is placed to the coronary artery slightly proximal to the anastomosis area using a silicone suture (Figure 2 top). EKG and blood pressure are carefully monitored by anesthesiologists. An arteriotomy is made on the target. Then a intracoronary shunt is quickly inserted into the coronary artery (Figure 2 middle) and the proximal snare is released (Figure 3 bottom) (Emmiller et al., 2008).

The sizing of the shunt is important. If a larger shunt is selected relative to the coronary artery size, the surgeon may encounter difficulty in placing the shunt into the coronary artery; moreover, vigorous forceful insertion of the shunt may cause injury or local dissection of the coronary artery. On the contrary, if a smaller shunt relative to the coronary artery is selected, the surgeon may experience excessive amount of bleeding from the anastomosis site, and smaller shunt may not able to supply enough blood distally. A CO2 mister-blower helps to provide a bloodless operative field. Anastomosis is performed in the standard manner; however additional care is always taken not to place a suture into the shunt. Right before completion of the anastomosis the proximal snare is tightened, the shunt is removed, and then the sutures are tied. Removal of the proximal snare allows abrupt restoration of distal coronary flow. In some cases of a small target coronary artery, the anastomosis can be performed without a shunt using a proximal snare only. If the target vessel is totally occluded vessel, the proximal snare is not necessary because of lack of forward blood flow. The IMA flow should be checked with ultrasound doppler before posterior or inferior wall revascularization.

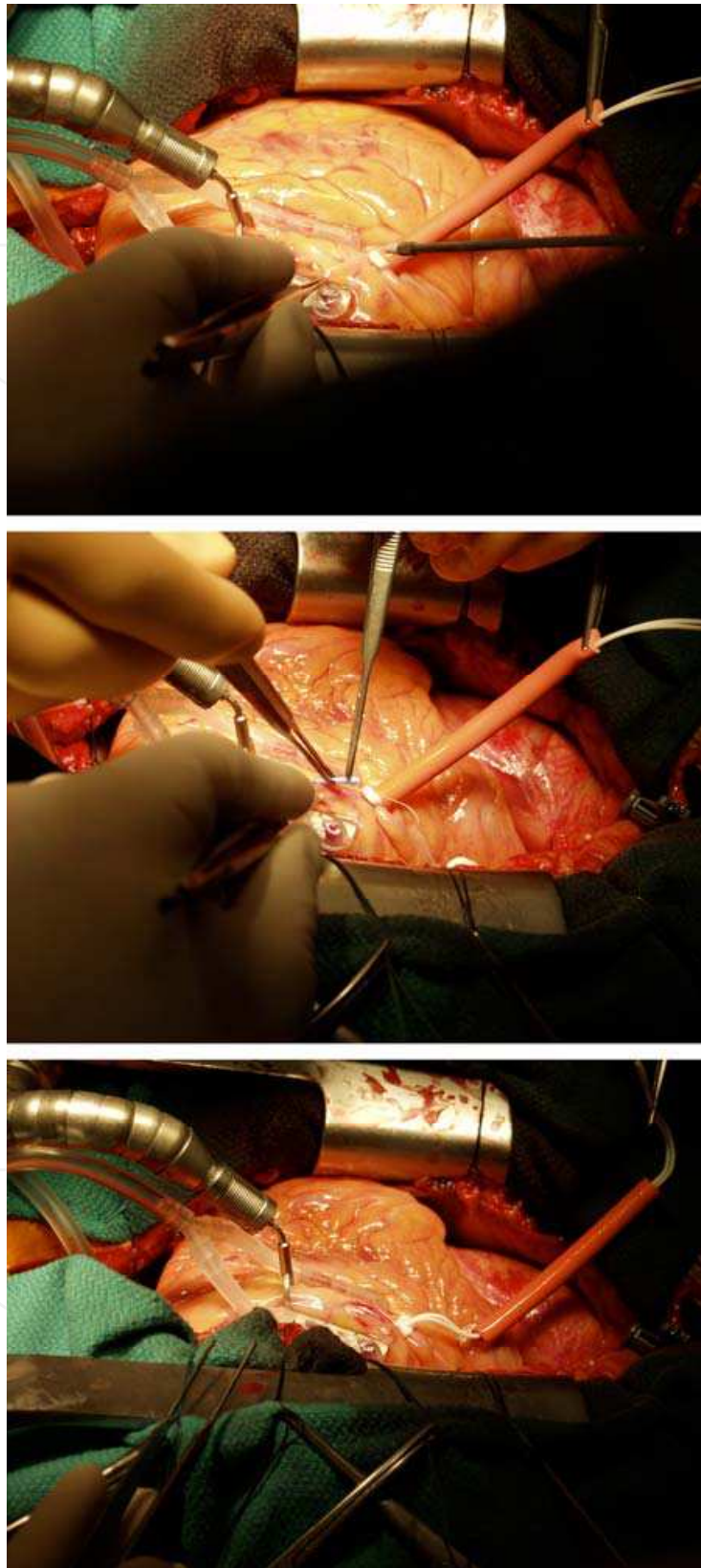


Fig. 2. Suction stabilizer and proximal snare is placed on to the target vessel (top). A shunt tube is placed through the arteriotomy (middle). Proximal snare is open after shunt tube placement and the coronary vessel is ready to anastomose (bottom)

## 2.4 Posterior and inferior wall revascularization

After IMA-LAD anastomosis, anastomoses to the obtuse marginal branch (OM) or posterior descending artery can be performed. Prior to the OM anastomosis, the patient is placed in a steep Trendelenburg and left side up position on the operating table. The heart is gently elevated using a hand and then the heart can be rested on the retropericardial sutures. If the blood pressure drops, the heart is placed back into the natural position and wait for recovery. The previous IMA-LAD graft should stay open and this IMA-LAD flow will help the hemodynamics during the OM anastomosis is completed. Phenylephrine is a first drug of choice for hypotension during the anastomosis, because phenylephrine increase blood pressure without causing tachycardia. If persistent hypotension occurs, conversion to on-pump should be considered. However, we found most of patient with normal left ventricular function will tolerate displacement of the heart during the anastomoses. After adequate exposure of the target vessel, a stabilizer is placed onto the target. Confirmation of stable hemodynamics is necessary prior to making an arteriotomy. In a sequential manner, proximal snare placement, arteriotomy, shunt placement, release of the proximal snare, and then anastomosis are performed. Arterial blood drawn by the anesthetist should be avoided during the anastomosis of the posterior wall. After the OM anastomosis, the position of the operating table is returned to zero and maintain the Trendelenburg position. Anastomosis to the inferior wall is performed in a similar manner.

## 2.5 Proximal anastomosis

Proximal anastomoses are performed after all distal anastomoses. The patient is placed in a slight reverse Trendelenburg position, systolic blood pressure is controlled by anesthesia with a target of 110 mm Hg, so that the proximal clamp is not dislodged during the proximal anastomosis. Displacement of the proximal clamp during the proximal anastomosis is dangerous and may cause massive exsanguination, and may also cause aortic dissection. After achieving an adequate blood pressure, a side-biting clamp is gently applied to the ascending aorta. An aortotomy is made and proximal anastomosis is completed in the standard manner. The side-biting clamp is removed and the grafts are de-aired. Proximal anastomosis of the graft may be performed before the distal anastomosis, especially if a proximal automatic anastomosis device is used. The automatic proximal anastomosis device is useful for the patient with severe calcification of the aorta.

## 2.6 Doppler assessment to the grafts

After completion of all anastomoses, the blood flow of the grafts should be accessed using an ultrasound flow probe. A poor graft flow mandates additional attention to the anastomosis and consider revision of the graft anastomosis (Kim et al., 2005). Protamine is administered after confirmation of the graft flow and then the chest is closed in the standard manner.

## 2.7 Postoperative management

Without using CPB, the fibrinolytic activity of the patient who undergo OPCAB is lower than those who undergo conventional CABG using CPB. After OPCAB surgery, patient may develop a hypercoagulable state. To avoid platelet aggregation at the anastomosis site, clopidogrel is started as early as postoperative day 0 (Quigley et al, 2003). Other postoperative managements are similar to those after on-pump CABG.

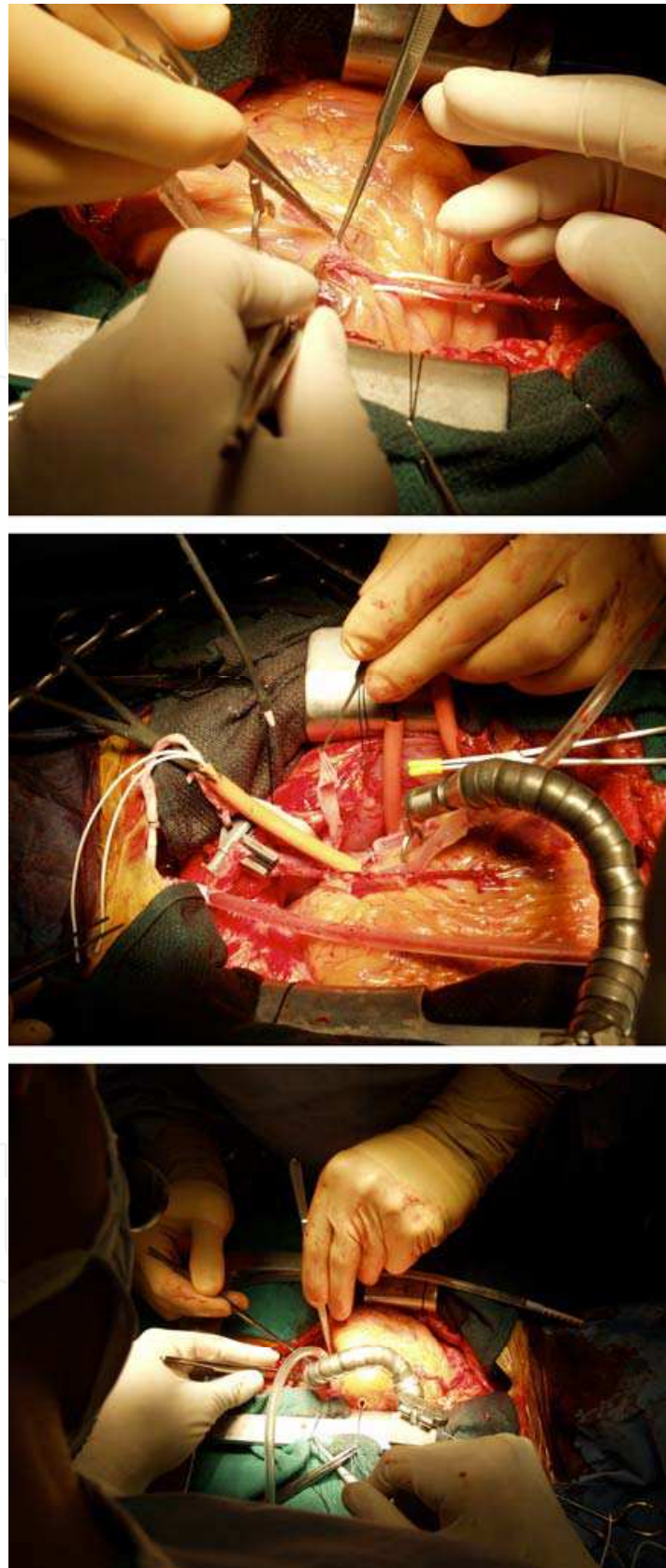


Fig. 3. Examples of anterior (top), posterolateral (middle), and inferior (bottom) revascularization.

3. Advantages of OPCAB

In general, those who are considered to be contraindicated for on-pump CABG, such as patients with calcified aorta, advanced age, and significant comorbidities, can be a candidate for OPCAB. OPCAB does not require CPB and theoretically eliminates all CBP-related complications. OPCAB can reduce blood loss and the need of transfusion. OPCAB has known to provide less myocardial enzyme release, fewer incidence of neurocognitive dysfunction and postoperative renal injury than conventional CABG. Studies found OPCAB can make patient recovery time shorter as well. Table 1 summarizes the best candidates for OPCAB.

Calcified aorta
Advanced age
Significant comorbidities
Recent stroke
Severe carotid disease
Renal dysfunction
Severer chronic lung disease
Jehovah’s Witness

Table 1. The patients that benefit most from CABG

3.1 Mortalities

Studies have shown that postoperative mortality is favorable to OPCAB (Puskas et al., 2003, Cleveland et al., 2001, Puskas et al., 2008). Mortality benefit from OPCAB is more obvious in high risk patients. (Hirose et al., 2010). The reasons are multifactorial as discussed below; however, the benefit most likely related to the avoidance of CPB.

3.2 Stroke

Postoperative strokes are the most disabling complication after CABG. Avoidance of aortic cannulation and aortic cross clamping decreases the risk of stroke and distal emboli. The incidence of postoperative stroke is favorable to OPCAB compared to on-pump CABG; however stroke has not been completely eliminated by OPCAB (Puskas et al., 2003, Cleveland et al., 2001, Sabik at al., 2002). The use of side-biting clamp for proximal anastomosis is potentially the cause of postoperative stroke. Calafiore reported that the stoke rate without using side-biting clamp was 0.2%, which was significantly lower than the stroke rate with side-biting clamp (1.2%) (Calafiore et al., 2002). All in-situ grafting using bilateral mammary arteries, gastroepiploic arteries and Y-composite grafting eliminates proximal aortic anastomoses. Using this aorta-non-touch surgery, theoretically no intraoperative stroke would occur and the postoperative risk of stroke should be minimal (Hirose et al., 2004). An investigation demonstrated that OPCAB significantly reduced the incidence of intraoperative stroke; however, the incidence of delayed strokes occurring more than 48 hours after OPCAB was similar to that after on-pump CABG (Nishiyama et al., 2009). These delayed strokes are not to be related to aortic manipulation during surgery, but could be related to a hypercoagulable state and/or postoperative atrial fibrillation.

3.3 Neurocognitive dysfunction

Neurocognitive disorder after CPB is a well known phenomenon, so called “pump head.” Prolonged CPB time is a risk factor for postoperative neurocognitive disorder, most likely related to non-pulsatile flow, hypothermia, low perfusion pressure, systemic inflammatory

state, and most importantly micro-emboli from CPB. Studies of s100 protein, a marker of neurological damage, have shown lower s100 protein after OPCAB compared to those after on-pump CABG; however, the incidence of clinical neurocognitive manifestation was similar between OPCAB and on-pump CABG (Lloyd et al., 2000). The benefit of OPCAB in relation to neurocognitive disorder remains controversial (Van Dijk et al., 2002, Browne et al., 1999, Marasco et al., 2008).

### 3.4 Inflammatory reaction

Contact between the blood and the CPB circuit triggers an inflammatory cascade. Cytokines, complements and coagulation-fibrinolytic system are activated by CPB, which inducing CPB-related inflammatory responses (Ngaage, 2003). This inflammatory response contributes to the increase in capillary permeability, fluid shift, and decrease in tissue perfusion. Systemic inflammatory response syndrome may cause multi-organ failure, including lung, brain, kidney and heart, which may promote patient mortality. Significant decrease in inflammatory markers has been observed in OPCAB compared to that in on-pump CABG (Ascione et al., 2000). Avoidance of CPB reduces the inflammatory state and contributes to early patient recovery (Raga, 2004). CPB-related inflammatory response could cause pulmonary edema resulting in hypoxia, brain edema resulting in neurocognitive disorder, renal hypoperfusion resulting in acute renal failure, and edema of the heart resulting in low cardiac output syndrome.

### 3.5 Blood transfusion

Perioperative anaemia among the patient undergoing CABG is common. Hemodilution may occur from the circuit and tubing of the CPB. The use of CPB activate fibrinolytic activity and reduce the actual number of platelet and function of the platelet, which aggregates perioperative blood loss anaemia (Khuri et al., 1992). Studies have shown that OPCAB has clear benefits in blood preservation. Postoperative blood loss and transfusion requirements are smaller in OPCAB than in on-pump CABG in almost all studies (Muneretto et al., 2003). Avoiding the need for transfusion is critical in caring for Jehovah's Witness patients.

### 3.6 Renal function

Hypoperfusion of the kidney during CABG may cause postoperative renal dysfunction. Risk factors for renal dysfunction are often observed in patients who undergo CABG, such as patients with diabetes, hypertension and peripheral vascular disease. Non-pulsatile flow and low perfusion pressure due to CPB contribute to hypoperfusion of the kidney, causing postoperative kidney injury (Laffey et al., 2002). The duration of CPB has been known to be directly related to the incidence of postoperative renal failure. The postoperative rise in creatinine after OPCAB is less frequently observed than that after on-pump CABG (Celik et al., 2005). A lower incidence of postoperative renal failure is observed after OPCAB (Calafiore et al., 2003). This renal protection with OPCAB would be most beneficial for patients showing moderate or severe preoperative renal dysfunction (Hirose et al., 2001).

### 3.7 Respiratory function

A randomized trial showed that OPCAB provides lower pulmonary compliance, better gas exchange after surgery than on-pump CABG (Staton et al., 2005). Clinically, intubation time after surgery as shorter after OPCAB than after on-pump CABG (Puskas et al., 2008).

3.8 Atrial fibrillation

Atrial fibrillation is the most common arrhythmia after cardiac surgery and occurs in 25-40 % of patients. The incidence of atrial fibrillation after OPCAB is known to be less than that for on-pump CABG (Ascione et al., 2000, Raga et al., 2004). Avoiding atrial cannulation and preserving the anterior epiaortic fat pad may contribute to lowering the incidence of postoperative atrial fibrillation (Cummings et al., 2004).

3.9 Patient recovery

Due to the benefits listed above, OPCAB provides overall decreased postoperative complications and mortality (Puskas et al., 2008, Reston et al., 2003, Legare et al., 2004). Postoperative hospitalization is shorter in OPCAB patients than that in on-pump CABG (Puskas et al., 2003, Cleveland et al., 2001, Van Dijk et al., 2001). Earlier patient recovery in OPCAB could be related to reduced inflammatory reaction compared to that after on-pump CABG. The benefits of early recovery following OPCAB are more strongly apparent in high-risk patients (Stamou et al., 2005, Puskas et al., 2009).

3.10 Cost

The cost effectiveness of OPCAB can be explained by the reduced utilization of the blood products, shorter intubation time, shorter ICU stay, shorter hospitalization, and reduced postoperative complications, as described above (Scott et al., 2009, Puskas et al., 2004).

4. Potential problems and disadvantages of OPCAB

In general, the disadvantage of OPCAB is associated with surgical technique. Despite advances in surgical instruments, exposure of the posterior wall could be potentially difficult, especially in a patient with poor ventricular function or when the surgeon has not had adequate training in OPCAB. Inadequate exposure of the target results in fewer number of distal anastomoses and incomplete revascularization. Table 2 summaries poor candidates for OPCAB.

Cardiogenic shock
Unable to maintain hemodynamics during anastomosis
ST changes or ventricular tachycardia during anastomosis
Redo surgery
Poor ventricular function, ischemic mitral regurgitation
Poor coronary target
Small, intramyocardial, and/or calcified coronary artery
Young healthy patient

Table 2. The patients that the benefit least from OPCAB

4.1 Myocardial protection

Postoperative cardiac enzyme release is lower after OPCAB than after on-pump CABG. (Van Dijk et al., 2001) However, in a patient in cardiogenic shock with a failing heart, placement on the CPB is unavoidable to prevent further end organ damage, and the role of OPCAB is limited because of hemodynamic instability. If the patient is experiencing global ischemia, pump failure and unstable hemodynamics, OPCAB should not be performed.

These patients need immediate placement on CPB to reestablish systemic circulation. Hemodynamic instability may occur during the positioning of the OPCAB especially doing anastomosis to the posterior wall of the heart. If pharmacological support is not adequate, IABP is helpful to maintain hemodynamic stability during OPCAB (Vohra & Dimitri, 2006). In patients with poor ventricular function, IABP placement prior to surgery is recommended.

#### **4.2 Redo cardiac surgery**

Redo surgery requires extensive dissection of the scar tissue. Structural injury during redo-sternotomy will result in a high mortality and morbidity (Gillinov et al., 1999). Decompression of the heart by CPB is recommended for redo surgery (Hirose & Amano 2005).

#### **4.3 Multivessel disease**

In the early era of OPCAB, revascularization of the posterolateral wall was challenging. However, after improvement of the coronary stabilizer, anastomoses to the posterolateral vessels are no longer a contraindication (Hirose et al., 2003, Song et al. 2003). Similarly, with left main disease, is no longer a contraindication for OPCAB (Hirose, 2004). In case of left main disease, revascularization of the left anterior descending artery prior to the posterolateral branches is essential. IABP may be helpful to stabilize hemodynamics, while anastomoses, especially in a patient with poor ventricular function and left main disease.

#### **4.4 Poor ventricular function**

Although multivessel disease is no longer contraindication for OPCAB, incomplete revascularization has been observed more often in OPCAB than on-pump CABG. A large heart with poor ventricular function is difficult to manipulate and to expose the target vessel. Heart displacement without decompression of the heart is challenging in these patients with poor ventricular function and distended left ventricle.

#### **4.5 Small and calcified target**

The reasons for incomplete revascularization could be the quality of the target vessel, as an example a small, calcified, or intramyocardial coronary artery. Bypass to these small coronary arteries and/or calcified arteries is challenging, even under on-pump cardiac arrest. Tedious endarterectomy for calcified vessels should be performed under CPB. Extensive dissection of intramyocardial coronary artery under a beating heart carries risk of ventricular rupture and should be performed with a decompressed heart under CPB. Incomplete revascularization will negatively affect the patient long-term outcome (Scott et al., 2000, Synnergren et al., 2008). A hybrid procedure involving OPCAB and percutaneous intervention could be an option in these difficult OPCAB patients.

#### **4.6 Emergent conversion to on-pump**

In patients with hemodynamic instability during anastomosis, emergent conversion to on-pump CABG is necessary. Conversion to on-pump surgery requires emergent arterial and venous cannulation, which may need to be done while CPR is in progress due to sudden ventricular arrhythmia or cardiac arrest. Emergent conversion from OPCAB to on-pump carries a ten-fold higher risk of operative mortality than elective OPCAB (Tabata et al.,

2006). One of the risk factors for emergent conversion is ischemic mitral regurgitation. Pre-existing ischemic mitral regurgitation may be accelerated during OPCAB due to displacement of the heart during anastomosis and due to distal ischemia.

4.7 Training

Cardiac motions during anastomosis are a major disturbance to the surgeon, and the OPCAB has a prominent learning curve. There is a direct correlation between the number of cases the surgeon has performed and the incidence of postoperative complications and graft patency. The surgeon with limited experience in OPCAB may produce a significant number of cardiac complications (Brown et al., 2001). Extensive training in performing OPCAB is necessary to improve patient outcomes.

4.8 Graft patency

Graft patency after OPCAB may be related to the surgeon’s skill level. A previous study by Khan showed a decreased 3-months-graft patency rate in the OPCAB group compared to that in the on-pump group (Khan et al., 2004). However, the article was criticized because of the lack of the surgeon’s adequate OPCAB experiences, lack of postoperative antiplatelet therapy with clopidogrel, and failure to use a suction device for stabilization of the heart (Dewey et al., 2004). A recent randomized trial by Puskas (Puskas et al., 2009), and the European study (Widimsky et al., 2004) independently confirmed similar 1-year graft patency rate between OPCAB and on-pump CABG.

5. Conclusion

Recent advances in surgical instruments and technique allows surgeons to perform OPCAB safely.

OPCAB for left main disease and multivessel revascularization is no longer a contraindication.
Except for patient undergoing redo CABG, hemodynamically compromised patients, and patient with poor target vessels, OPCAB can be performed by an experienced surgeon without increasing risks.
OPCAB requires a significant intensive training period.
OPCAB may expand the indications of CABG to patients with higher risks.
OPCAB contributes to shortening the length of stay and promotes an early recovery.

Table 3. Summary of the advantages and disadvantages of OPCAB

Although there is a steep learning curve for OPCAB techniques, OPCAB provides a favorable or at least equivalent postoperative outcome compared to on-pump CABG, with minimal contraindications. OPCAB will significantly reduce the risk of CPB-related complications. These benefits of OPCAB are more significant in high-risk patients, and there is a possibility to expand the indication of CABG.

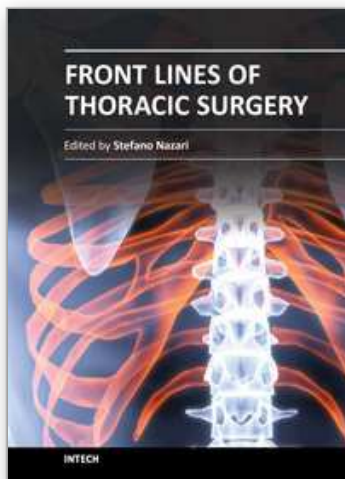
6. References

Abu-Omar Y, Taggart DP. (2009) The present status of off-pump coronary artery bypass grafting. *Eur J Cardiothorac Surg*. Vol. 36, No. 2, 312-321.

- Ascione R, Caputo M, Calori G, Lloyd CT, Underwood MJ, Angelini GD. (2000) Predictors of atrial fibrillation after conventional and beating heart coronary surgery: a prospective, randomized study. *Circulation*. Vol. 102, No. 13, 1530-1535.
- Ascione R, Lloyd CT, Underwood MJ, Lotto AA, Pitsis AA, Angelini GD. (2000) Inflammatory response after coronary revascularization with or without cardiopulmonary bypass. *Ann Thorac Surg*. Vol. 69, No. 4, 1198-1204.
- Brown PP, Mack MJ, Simon AW, et al. (2001) Comparing clinical outcomes in high-volume and low-volume off-pump coronary bypass operation programs. *Ann Thorac Surg*. Vol. 72, No. 3, S1009-S1015.
- Browne SM, Halligan PW, Wade DT, Taggart DP. (1999) Cognitive performance after cardiac operation: implications of regression toward the mean. *J Thorac Cardiovasc Surg*. Vol. 117, No 3, 481-485.
- Calafiore AM, Di Mauro M, Canosa C, Di Giammarco G, Iaco AL, Contini M. (2003) Myocardial revascularization with and without cardiopulmonary bypass: advantages, disadvantages and similarities. *Eur J Cardiothorac Surg*. Vol. 24, No. 6, 953-96.
- Calafiore AM, Di Mauro M, Teodori G, et al. (2002) Impact of aortic manipulation on incidence of cerebrovascular accidents after surgical myocardial revascularization. *Ann Thorac Surg*. Vol. 73, No. 5, 1387-1393.
- Celik JB, Gormus N, Topal A, Okesli S, Solak H. (2005) Effect of off-pump and on-pump coronary artery bypass grafting on renal function. *Ren Fail*. Vol. 27, No. 2, 183-188.
- Cleveland JC, Shroyer LW, Chen AY, Peterson E, Grover FL. (2001) Off-pump coronary artery bypass grafting decreases risk-adjusted mortality and morbidity. *Ann Thorac Surg*. Vol. 72, No. 4, 1282-1289.
- Cummings JE, Gill I, Akhrass R, Dery M, Biblo LA, Quan KJ. (2004) Preservation of the anterior fat pad paradoxically decreases the incidence of postoperative atrial fibrillation in humans. *J Am Coll Cardiol*. Vol. 43, No. 6, 994-1000.
- Dewey TM, Magee MJ, Mack MJ. (2004) Off-pump versus on-pump coronary bypass surgery. *N Engl J Med*. Vol. 350, No. 17, 1791-1793.
- Emmiller M, Kocogullari CU, Ela Y, Cekirdekci A. (2008) Influence of intracoronary shunt on myocardial damage: a prospective randomized study. *Eur J Cardiothorac Surg*. Vol 34, No 5, 1000-1004.
- Gillinov AM, Casselman FP, Lytle BW, et al. (1999) Injury to a patent left internal mammary artery graft at coronary artery reoperation. *Ann Thorac Surg*. Vol. 67, No. 2, 382-386.
- Gunnert JF, Raumanns J, Opfermann UT, et al. (2008) Hemodynamic assessment using apical suction versus pericardial retraction in beating heart surgery. *Innovation*. Vol. 3, No.3, 125-130.
- Hirose H, Amano A, Takahashi A, Nagano N. (2001) Coronary artery bypass grafting for patients with non-dialysis-dependent renal dysfunction (serum creatinine  $\geq 2.0$  mg/dl). *Euro J Cardiothoracic Surg*. Vol. 20, No. 3, 565-572.
- Hirose H, Amano A, Takahashi A, Nagano N. (2003) Off-pump multivessel revascularization; efficacy of suction type of coronary stabilizer. *Jpn J Thorac Cardiovasc Surg*. Vol 51, No. 4, 130-137.
- Hirose H, Amano A, Takahashi A. (2004) Aortic nontouch off-pump complete revascularization using 3 in situ arterial conduits: bilateral internal mammary arteries and gastroepiploic artery. *Heart Surgery Forum*. Vol. 7, No. 2, E122-125.
- Hirose H, Amano A. (2005) Routine off-pump coronary artery bypass: reasons for on-pump conversion. *Innovations*. Vol. 1, No 1, 28-31.

- Hirose H, Noguchi N, Inaba H, et al. (2010) The role of EuroSCORE in patients undergoing off-pump coronary artery bypass. *Interactive Cardiovasc Surg*. Vol. 10, No 5, 771-776.
- Hirose H. (2004) Off-pump coronary artery bypass grafting for patients with left main disease. *Cardiology*. 101 (4), 194-198.
- Khan NE, De Souza A, Mister R, et al. (2004) A randomized comparison of off-pump and on-pump multivessel coronary-artery bypass surgery. *N Engl J Med*. Vol. 350, No. 1, 21-28.
- Khuri SF, Wolfe JA, Josa M, et al. (1992) Hematologic changes during and after cardiopulmonary bypass and their relationship to the bleeding time and nonsurgical blood loss. *J Thorac Cardiovasc Surg*. Vol. 104, No. 1, 94-107.
- Kim K, Hyun Kang C, Lim C. (2005) Prediction of graft flow impairment by intraoperative transit time flow measurement in off-pump coronary artery bypass using arterial grafts. *Ann Thorac Surg*. Vol. 80, No. 2, 594-598.
- Laffey JG, Boylan JF, Cheng DC. (2002) The systemic inflammatory response to cardiac surgery: implications for the anesthesiologist. *Anesthesiology*. Vol. 97, No. 1, 215-252.
- Legare JF, Buth KJ, King S, et al. (2004) Coronary bypass surgery performed off-pump does not result in lower in-hospital morbidity than coronary artery bypass grafting performed on pump. *Circulation*. Vol. 109, No. 7, 887-892.
- Lloyd CT, Ascione R, Underwood MJ, Gardner F, Black A, Angelini GD. (2000) Serum S-100 protein release and neuropsychologic outcome during coronary revascularization on the beating heart: a prospective randomized study. *J Thorac Cardiovasc Surg*. Vol. 119, No. 1, 148-154.
- Marasco SF, Sharwood LN, Abramson MJ. (2008) No improvement in neurocognitive outcomes after off-pump versus on-pump coronary revascularization: a meta-analysis. *Eur J Cardiothorac Surg*. Vol. 33, No. 6, 961-970.
- Muneretto C, Bisleri G, Negri A, et al. (2003) Off-pump coronary artery bypass surgery technique for total arterial myocardial revascularization: a prospective randomized study. *Ann Thorac Surg*. Vol. 76, No. 3, 778-783.
- Ngaage DL. (2003) Off-pump coronary artery bypass grafting: the myth, the logic and the science. *Eur J Cardio-thorac Surg*. Vol 24, No. 4, 557-570.
- Nishiyama K, Horiguchi M, Shizuta S, et al. (2009) Temporal pattern of strokes after on-pump and off-pump coronary artery bypass graft surgery. *Ann Thorac Surg*. Vol. 87, No. 6, 1839-1844.
- Puskas JD, Kilgo PD, Lattouf OM, et al. (2008) Off-pump coronary bypass provides reduced mortality and morbidity and equivalent 10-year survival. *Ann Thorac Surg*. Vol. 86, No. 4, 1139-1146.
- Puskas JD, Thourani VH, Kilgo P, et al. (2009) Off-pump coronary artery bypass disproportionately benefits high-risk patients. *Ann Thorac Surg*. Vol. 88. No. 4, 1142-1147.
- Puskas JD, Williams WH, Duke PG, et al. (2003) Off-pump coronary artery bypass grafting provides complete revascularization with reduced myocardial injury, transfusion requirements, and length of stay: A prospective randomized comparison of two hundred unselected patients undergoing off-pump versus conventional coronary artery bypass grafting. *J Thorac Cardiovasc Surg*. Vol. 125 No. 4, 797-808.
- Puskas JD, Williams WH, Mahoney EM, et al. (2004) Off-pump vs conventional coronary artery bypass grafting: early and 1-year graft patency, cost, and quality-of-life outcomes: a randomized trial. *JAMA*. Vol. 29, No. 15, 1841-1849.

- Quigley RL, Fried DW, Pym J, Highbloom RY. (2003) Off-pump coronary artery bypass surgery may produce a hypercoagulable patient. *Heart Surgery Forum*. Vol. 6, No. 2, 94-98.
- Raja SG, Behranwala AA, Dunning J. (2004) Does off-pump coronary artery surgery reduce the incidence of postoperative atrial fibrillation? *Interact Cardiovasc Thorac Surg*. Vol. 3, No. 4, 647-52.
- Raja SG. (2004) Decreased release of endothelin after OPCAB: implications of the evidence. *J Cardiothorac Vasc Anesth*. Vol. 18, No. 5, 25-29.
- Reston JT, Tregear SJ, and Turkelson CM. (2003) Meta-analysis of short-term and mid-term outcomes following off-pump coronary artery bypass grafting. *Ann Thorac Surg*. Vol. 76, No. 5, 1510-1515.
- Sabik JF, Gillinov AM, Blackstone EH, et al. (2002) Does off-pump coronary surgery reduce morbidity and mortality? *J Thorac Cardiovasc Surg*. Vol. 124, No. 4, 698-707.
- Scott BH, Seifert FC, Grimson R, Glass PS. (2009) Resource utilization in on- and off-pump coronary artery surgery: factors influencing postoperative length of stay—an experience of 1,746 consecutive patients undergoing fast-track cardiac anesthesia. *J Cardiothorac Vasc Anesth*. Vol. 19, No. 1, 26-31.
- Scott R, Blackstone EH, McCarthy PM, et al. (2000) Isolated bypass grafting of the left internal thoracic artery to the left anterior descending coronary artery: late consequences of incomplete revascularization. *J Thorac Cardiovasc Surg*. Vol. 120, No. 1, 173-184.
- Song HK, Petersen RJ, Sharoni E, Guyton RA, Puskas JD. Safe evolution towards routine off-pump coronary artery bypass: negotiating the learning curve. *Eur J Cardiothorac Surg*. Vol. 24, No. 6, 947-952 (2003).
- Stamou SC, Jablonski KA, Hill PC. (2005) Coronary revascularization without cardiopulmonary bypass versus the conventional approach in high-risk patients. *Ann Thorac Surg*. Vol. 79, No. 2, 552-557.
- Staton GW, Williams WH, Mahoney EM, et al. (2005) Pulmonary outcomes of off-pump vs on-pump coronary artery bypass surgery in a randomized trial. *Chest*. Vol. 127, No. 3, 892-901.
- Synnergren MJ, Ekroth R, Odén A, Rexius H, Wiklund L. (2008) Incomplete revascularization reduces survival benefit of coronary artery bypass grafting: role of off-pump surgery. *J Thorac Cardiovasc Surg*. Vol. 136, No. 1, 29-36.
- Tabata M, Takanashi S, Horai T, Fukui T, Hosoda Y. (2006) Emergency conversion in off-pump coronary artery bypass grafting. *Interact Cardiovasc Thorac Surg*. Vol. 5, No. 5, 555-559.
- Van Dijk D, Jansen EW, Hijman R, et al. (2002) Cognitive outcome after off-pump and on-pump coronary artery bypass graft surgery: a randomized trial. *JAMA*. Vol. 287 No.11, 1405-1412.
- Van Dijk D, Nierich AP, Jansen EW, et al. (2001) Octopus Study Group. Early outcome after off-pump versus on-pump coronary bypass surgery: results from a randomized study. *Circulation*. Vol. 104, No. 15, 1761-1766.
- Vohra HA, Dimitri WR. (2006) Elective intraaortic balloon counterpulsation in high-risk off-pump coronary artery bypass grafting. *J Card Surg*. Vol. 21, No.1, 1-5.
- Widimsky P, Straka Z, Stros P, et al. (2004) One-year coronary bypass graft patency: a randomized comparison between off-pump and on-pump surgery angiographic results of the PRAGUE-4 trial. *Circulation*. Vol. 110, No. 22, 3418-3423.



## **Front Lines of Thoracic Surgery**

Edited by Dr. Stefano Nazari

ISBN 978-953-307-915-8

Hard cover, 412 pages

**Publisher** InTech

**Published online** 03, February, 2012

**Published in print edition** February, 2012

Front Lines of Thoracic Surgery collects up-to-date contributions on some of the most debated topics in today's clinical practice of cardiac, aortic, and general thoracic surgery, and anesthesia as viewed by authors personally involved in their evolution. The strong and genuine enthusiasm of the authors was clearly perceptible in all their contributions and I'm sure that will further stimulate the reader to understand their messages. Moreover, the strict adhesion of the authors' original observations and findings to the evidence base proves that facts are the best guarantee of scientific value. This is not a standard textbook where the whole discipline is organically presented, but authors' contributions are simply listed in their pertaining subclasses of Thoracic Surgery. I'm sure that this original and very promising editorial format which has and free availability at its core further increases this book's value and it will be of interest to healthcare professionals and scientists dedicated to this field.

### **How to reference**

In order to correctly reference this scholarly work, feel free to copy and paste the following:

Hitoshi Hirose (2012). Current Trend of Off-Pump Coronary Artery Bypass Grafting, Front Lines of Thoracic Surgery, Dr. Stefano Nazari (Ed.), ISBN: 978-953-307-915-8, InTech, Available from:

<http://www.intechopen.com/books/front-lines-of-thoracic-surgery/current-trend-in-off-pump-coronary-artery-bypass-grafting->

**INTech**  
open science | open minds

### **InTech Europe**

University Campus STeP Ri  
Slavka Krautzeka 83/A  
51000 Rijeka, Croatia  
Phone: +385 (51) 770 447  
Fax: +385 (51) 686 166  
[www.intechopen.com](http://www.intechopen.com)

### **InTech China**

Unit 405, Office Block, Hotel Equatorial Shanghai  
No.65, Yan An Road (West), Shanghai, 200040, China  
中国上海市延安西路65号上海国际贵都大饭店办公楼405单元  
Phone: +86-21-62489820  
Fax: +86-21-62489821

© 2012 The Author(s). Licensee IntechOpen. This is an open access article distributed under the terms of the [Creative Commons Attribution 3.0 License](https://creativecommons.org/licenses/by/3.0/), which permits unrestricted use, distribution, and reproduction in any medium, provided the original work is properly cited.

IntechOpen

IntechOpen