

# We are IntechOpen, the world's leading publisher of Open Access books Built by scientists, for scientists

6,900

Open access books available

185,000

International authors and editors

200M

Downloads

Our authors are among the

154

Countries delivered to

TOP 1%

most cited scientists

12.2%

Contributors from top 500 universities



WEB OF SCIENCE™

Selection of our books indexed in the Book Citation Index  
in Web of Science™ Core Collection (BKCI)

Interested in publishing with us?  
Contact [book.department@intechopen.com](mailto:book.department@intechopen.com)

Numbers displayed above are based on latest data collected.  
For more information visit [www.intechopen.com](http://www.intechopen.com)



# Breast Cancer: Classification Based on Molecular Etiology Influencing Prognosis and Prediction

Siddik Sarkar<sup>1</sup> and Mahitosh Mandal<sup>1</sup>

<sup>1</sup>*School of Medical Science and Technology, Indian Institute of Technology Kharagpur  
Kharagpur, West Bengal  
India*

## 1. Introduction

Cancer is a group of diseases that leads to uncontrolled cell division and eventually forms a lump or mass called a tumor. They are classified and named after the part of the body where the tumor originates. Breast cancer begins in breast tissue, which is made up of glands for milk production, called lobules, and the ducts that connect lobules to the nipple. The remainder of the breast is made up of fatty, connective, and lymphatic tissue. On the basis of origin, it is of two types (i) ductal and (ii) lobular. Ductal carcinoma constitutes 80-90% and lobular carcinoma constitutes 10-20% breast cancer cases.

Breast cancer is one of the most frequently diagnosed cancers in women worldwide, comprising 16% of all female cancers cases. It is estimated that this disease will affect one in eight females in America during their lifetime. It is estimated that occurrence of female breast cancer is 28% of cancers from all sites in U.S.A, and the relative risk of ever developing breast cancer is 0.125 (1 in 8) (American Cancer Society, 2009). Although breast cancer is thought to be a disease of the developed world, a majority (69%) of all breast cancer deaths occurs in developing countries (WHO Global Burden of Disease, 2004) and relative survival is poor in underdeveloped and developing countries (Coleman et al., 2008). The relative risk of developing breast cancer in the lifetime of women in the developed and developing countries is 0.048 (1 in 21) and 0.018 (1 in 56) respectively. In India, breast cancer is the leading cancer among women (Fig. 1) and the relative risk is 0.033 (1 in 30) (NCRP, 2008).

## 2. Risk factors of breast cancer

Every woman is at risk for developing breast cancer. Several relatively strong risk factors for breast cancer that affect large proportion of the general population have been known for some time. However, the vast majority of breast cancer cases occur in women who have no identifiable risk factors other than their gender and age (Kelsey & Gammon, 1990). The other established risk factors are previous family history, age at first full-term pregnancy, early menarche, late menopause, genetic and breast tissue density. These factors are not easily modifiable and classified under unmodified factors. However, other factors associated with

increased breast cancer risk are postmenopausal obesity, hormone replacement therapy (HRT), alcohol consumption, and physical inactivity, no breast feeding are modifiable and classified under modified factors. The relative risk of various factors responsible for breast cancer are shown in Table 1 (Hulka & Moorman, 2001).

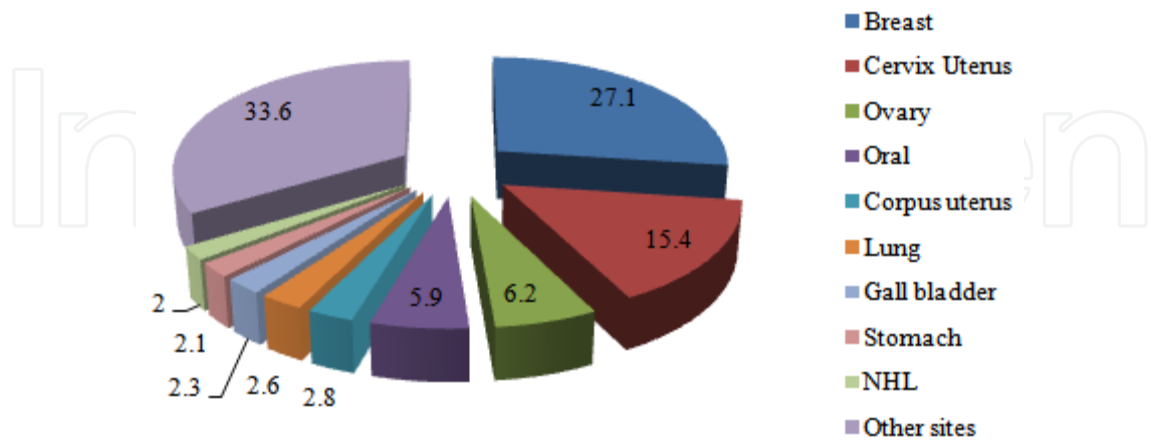


Fig. 1. Demographic profiles of cancer cases in Indian females. Based on 2004-2005 data for Bangalore, Barshi, Bhopal, Chennai, Delhi, Mumbai, Ahmedabad and 2005 data for Kolkata.

3. Classification of breast cancer

3.1.1 Histopathological classification

Each breast has 15 to 25 sections called lobes, formed by groups of lobules, the milk glands. Each lobule is composed of grape-like clusters of acini (also called alveoli), the hollow sacs that make and hold breast milk. The lobes and lobules are connected by thin tubes, called ducts that deliver milk to nipple (Fig. 2). The pink or the brown pigmented region surrounding the nipple is called areola. Connective and fatty tissue fills the remaining space in between the lobes and ducts. The most common type of breast cancer is ductal cancer. It is found in the cells of the ducts. Cancer that starts in lobes or lobules is called lobular cancer. It is more often found in both breasts than other types of breast cancer. Rarely breast cancer

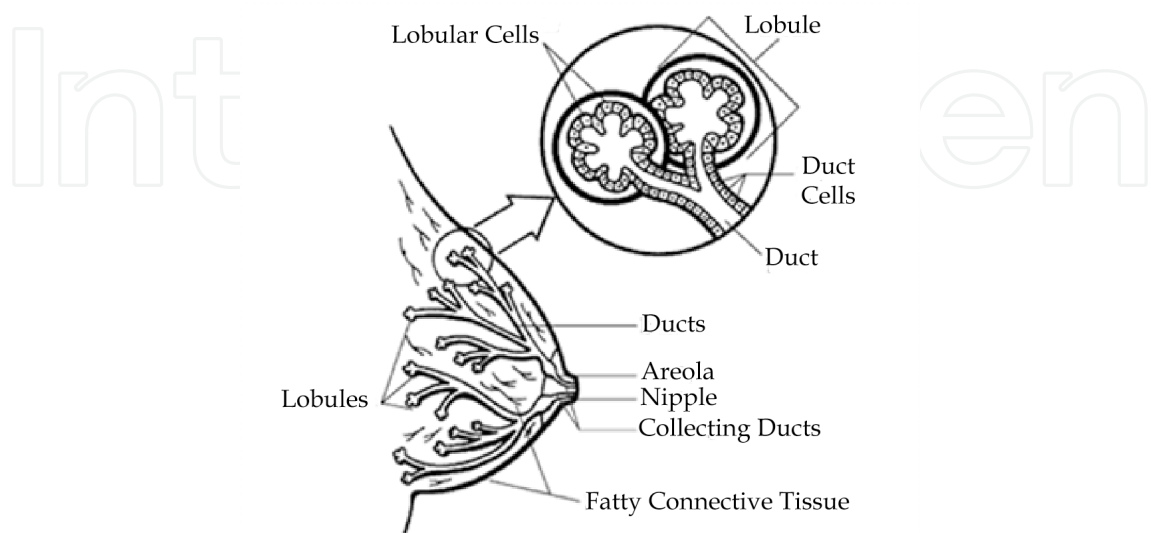


Fig. 2. Anatomy of female breast.

can begin in the connective tissue that's made up of muscles, fat and blood vessels. Cancer that begins in the connective tissue is called sarcoma. It accounts for less than 5% of all soft tissue sarcomas and less than 1% of breast cancer (Moore and Kinne, 1996). Phyllodes tumor and angiosarcoma are two common forms of sarcoma. Cancers are also classified as non invasive (in situ) and invasive (infiltrating). The term in situ means “in its original place” and refers to cancer that has not spread past the area where it initially developed. Invasive breast cancer has a tendency to spread (invade) to other tissues of the breast and/or other regions of the body. A less common type of breast cancer is inflammatory breast cancer characterized by general inflammation (red and swollen) of the breast (Fig. 3). The different types of invasive cancers, their frequency and percentage survival is shown in Table 1.2.

Relative Risk	Factor
>4.0	Female
	Age (65+ vs. <65 years, although risk increases across all ages until age 80)
	Certain inherited genetic mutations for breast cancer (BRCA1 and/or BRCA2)
	Two or more first-degree relatives with breast cancer diagnosed at an early age
	Personal history of breast cancer
2.1-4.0	High breast tissue density or 75% dense
	Biopsy-confirmed atypical hyperplasia
	One first-degree relative with breast cancer
	High-dose radiation to chest
1.1-2.0 Factors that affect circulating hormones	High bone density (postmenopausal)
	Late age at first full-term pregnancy (>30 years)
	Early menarche (<12 years)
	Late menopause (>55 years)
	No full-term pregnancies
	No breast feeding
	Recent oral contraceptive use
	Recent and long-term use of HRT
1.1 -2.0 Other factors	Obesity (postmenopausal)
	Personal history of endometrial or ovarian cancer
	Alcohol consumption
	Height (tall)
	High socioeconomic status

Hulka BS, and Moorman PG 2001. Maturitas 2008; 38:103-113  
© 2001 Elsevier Science Ireland Ltd.

Table 1. Factors that increase the Relative Risk for Breast Cancer.

Invasive ductal carcinoma is the most common breast cancer and it accounts more than 75% of breast cancer cases. Most are invasive ductal carcinoma (IDC) not otherwise specified (IDC NOS), and remaining IDC includes Inflammatory breast cancer, medullary carcinoma, metaplastic, apocrine and tubular carcinoma. Medullary carcinoma accounts <5% of breast cancers diagnosed, and takes its name from its color, which is close to the color of brain



tissue, or medulla. It is an invasive breast cancer that forms a distinct boundary between tumor tissue and normal tissue. Metaplastic breast cancer is a form of invasive ductal cancer, meaning that it forms in the milk ducts and then moves into other tissues of the breast. Metaplastic breast carcinomas constitute a heterogeneous group of neoplasms, accounting for less than 1% of all invasive mammary carcinomas (Reis-Filho et al., 2005), such as squamous (skin) or osseous (bone) cells. The other groups of invasive breast cancers are invasive lobular carcinoma, adenoid cystic carcinoma, micropapillary carcinoma, mucinous carcinoma (formed by the mucus-producing cancer cells), etc as shown in Fig. 3.

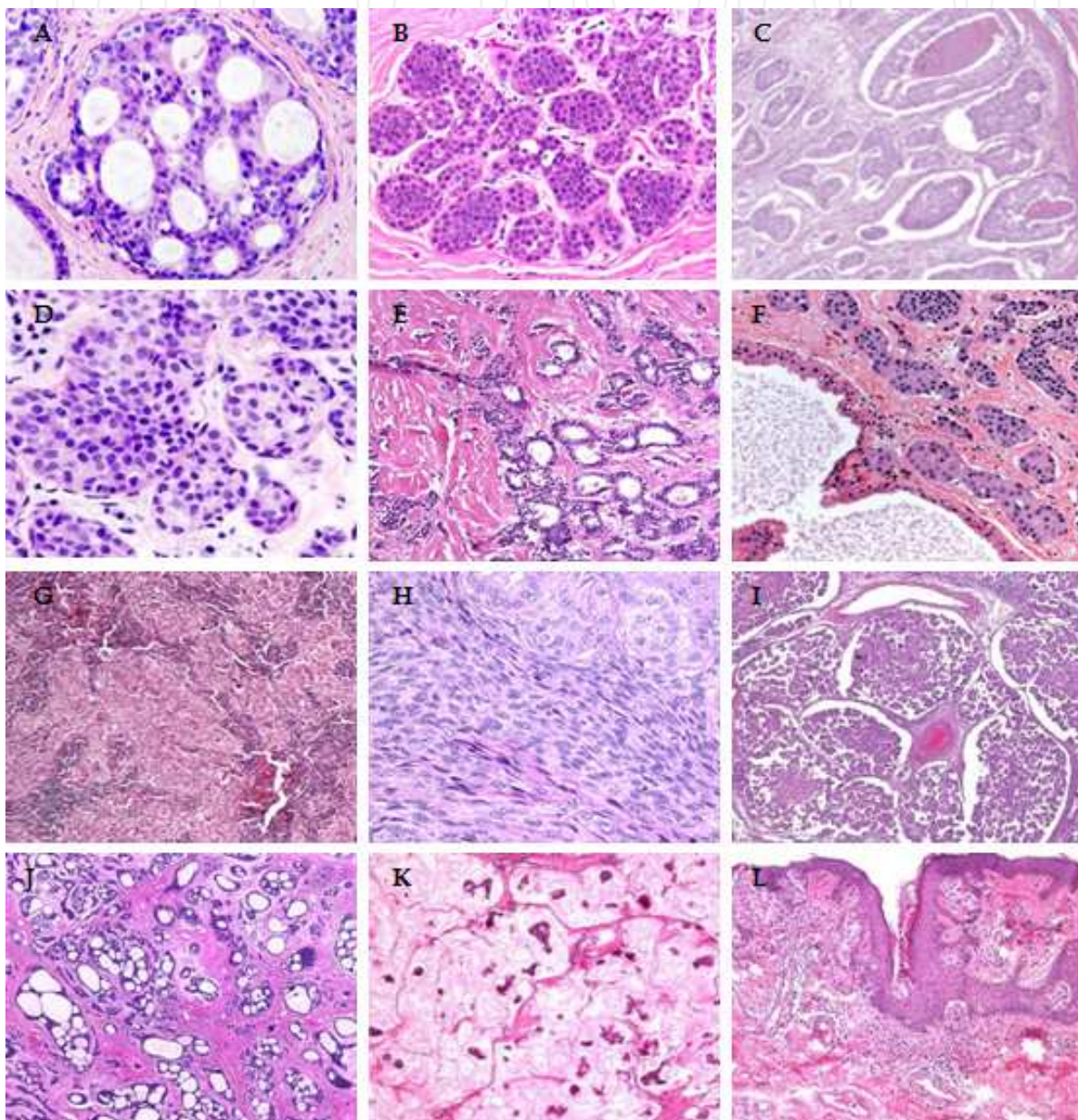


Fig. 3. Histology of breast carcinoma. Breast carcinoma is classified into Ductal (A), Lobular carcinoma (B) and Inflammatory carcinoma. (C). It can be further classified into non-invasive (A-B) and invasive carcinoma (C-L). Invasive cancer includes Inflammatory (C), Invasive lobular (D), tubular (E) apocrine (F), medullary, (G) metaplastic (H), micropapillary, (I) adenoid cystic (J), mucinous carcinoma (K), and paget disease (L).

Histopathological type of invasive breast carcinoma	Frequency (%)	10-year OS (%)
Invasive ductal carcinoma not otherwise specified (IDC NOS)	50-60	35-50
Inflammatory carcinoma	1-6	30-40
Apocrine carcinoma	1-4	Like IDC NOS
Medullary carcinoma	5-7	50-90
Metaplastic carcinoma	<5	Unknown
Micropapillary carcinoma	1-2	Unknown
Tubular carcinoma	1-2	90-100
Invasive lobular carcinoma	5-15	35-50
Adenoid cystic carcinoma	0.1	85-100
Mucinous carcinoma	<3	85-95
Neuroendocrine carcinoma	2-5	Unknown
Mammary Paget disease	1-4	40-50

Table 2. Frequency and outcome of histological types of invasive breast cancer.

3.1.2 Molecular classification

Breast cancer is a clinically heterogeneous disease. Histologically similar tumors may have different prognosis and may respond to therapy differently. It is believed that these differences in clinical behavior are due to molecular differences between histologically similar tumors. DNA microarray technology, Immuno-histochemistry (IHC), Fluorescent in situ hybridization (FISH), and quantitative reverse transcription polymerase chain reaction (RT-PCR) are ideally suitable techniques to reveal molecular differences among the same or different groups of histopathological specimens. Each of these molecular techniques has the potential for proper prognosis and prediction of human cancers, including breast. IHC was developed more than 30 years back and it is used for classification of breast cancer into ER positive and ER negative tumors. FISH was developed 20 years back and is used to classify breast tumors into *HER-2* amplified or non amplified categories. Breast cancer cells generally overexpress estrogen receptor (ER)/ progesterone receptor (PR), and human epidermal growth factor-2 (*HER-2*) receptor for breast tumor formation and progression. Thus, breast cancer can be classified into three sub-groups (i) ER/PR positive (ii) ER negative or *HER-2* positive and triple negative (ER, PR and *HER-2* negative) on the basis of receptor status. The classification of breast cancer on the basis of ER status improves the prognosis and clinical outcome of ER+ tumors as ER+ cancer cells depend on estrogen for their growth, and the treatment of patients with anti-estrogen agents (e.g. tamoxifen) will inhibit the effect of estrogen and thus improves the treatment outcome. Generally, *HER-2*+ had a worse prognosis, however *HER-2*+ cancer cells respond to drugs such as the monoclonal antibody, trastuzumab, (in combination with conventional chemotherapy) and this has improved the prognosis and pathological complete response significantly (Chang et al., 2010). Triple-negative breast cancer is a high risk breast cancer that lacks the benefit of specific therapy that targets these proteins. It can be categorized in basal subtypes (Rakha et al., 2007). It is found in 10-20% of breast cancer cases and mostly diagnosed in younger women with BRCA1 and BRCA2 mutations (Dent et al., 2007; Dawood et al., 2009). The rate of recurrence is very high, and it reaches its peak within first 3 years and then declines after that. Patients with triple negative breast cancer are most likely to die within 5 years than



patients with other breast cancers. All deaths due to breast cancer in patients’ with triple-negative cancer occurred within 10 years of diagnosis.  
A novel molecular classification of breast cancer based on gene expression profiles segregates breast cancer into four types (i) luminal, (ii) basal, (iii) HER-2 and (iv) normal type (Perou et al., 2000; Sotiriou et al., 2003; Tamimi et al., 2008) (Fig. 4).

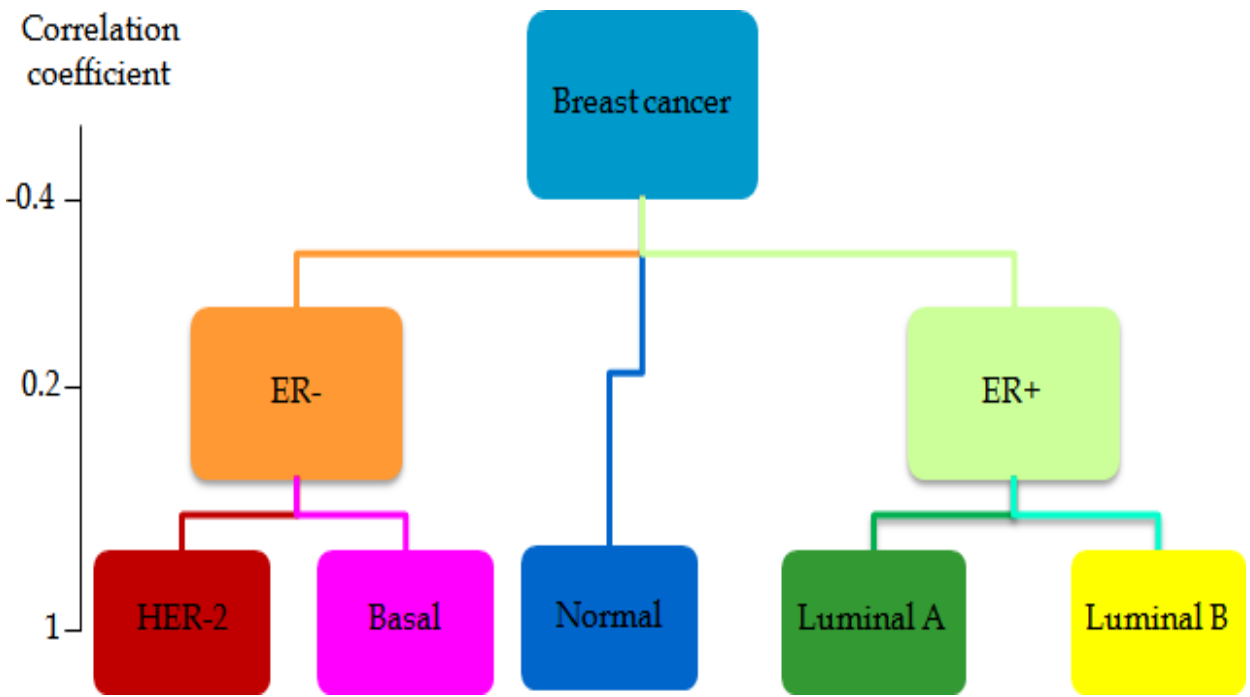


Fig. 4. Dendrogram of breast cancer. The tumors were separated into two main groups mainly associated with ER status as analyzed by hierarchical cluster analysis generated by using gene profile data. The dendrogram is further branched into smaller subgroups within the ER+ and ER- classes based on their basal and luminal characteristics: HER-2 subgroup, dark red; basal-like 1 subgroup, pink; luminal-like A subgroup, green; luminal-like B subgroup, yellow; and normal-like breast subgroup, blue.

Luminal express keratin 8/18, ER, GATA binding protein, X-box binding protein 1, annexin XXXI, cytochrome P450 and basal type express keratin 5, keratin 17, integrin  $\beta$ 4, matrix metalloprotease 14, laminin  $\alpha$ 3, basonuclin and mutated *TP53* gene. Luminal type is further classified into luminal A and luminal B. Luminal B expresses HER-2 along with ER where as luminal A doesn't express HER-2. HER-2 subtype express *ERB-2/HER-2*, growth factor receptor bound protein 7, TNF receptor-associated factor IV, GRB 7. Normal-breast-like group showed the highest expression of many genes known to be expressed by adipose tissue and other non-epithelial cell types. These tumors also showed strong expression of basal epithelial genes and low expression of luminal epithelial genes. It expresses CD36 antigen collagen type I, glycerol 3 phosphate dehydrogenase I, lipoprotein lipase A, alcohol dehydrogenase 2 (Sorlie et al., 2001). The molecular subclasses show difference in clinical outcome as per as overall survival (OS) and relapse free survival (RFS) is concerned as shown in Table 1.3. There was a significant difference in overall survival between the subtypes with basal and HER-2 is as associated with worse outcome and shortest survival time.

Molecular types of breast carcinoma	Frequency (%)	5-year OS+ (%)	5-year RFS* (%)	10-year OS (%)	10-year RFS (%)
Luminal A	50-60	85-95	80-90	75-85	75-85
Luminal B	5-10	70-80	65-75	55-65	54-64
Basal	10-20	63-73	60-70	57-67	45-55
ERB-2	10-20	55-65	15-20	45-55	15-30
Normal-like	10-15	84-94	80-90	75-85	72-82

Table 3. Breast cancer outcomes in molecular types of breast cancer.RFS: The percentage of people without any further symptoms of breast cancer during the interval elapsed between the date of breast surgery and the date of diagnosed further episode of breast cancer, whether the breast cancer was classified as a recurrence or second primary, and whatever the histology. OS: The percentage of people survived during the interval elapsed between the date of breast surgery and the date of breast cancer-related or un-related death (documented from hospital records).

4. Clinical outcomes of breast cancer in association with clinical, histopathological and molecular classification

Breast cancers can be classified by different schemata. Classification aspects include clinical (age, tumor, node), histopathological (grade, ER and HER-2 status, ductal, lobular, invasive) and molecular (normal-like, luminal, basal, HER-2) values. Every aspect influences treatment response and prognosis as shown in Table 2 and Table 3. The true prognostic or predictive value of the various molecular classes is unknown because there is a strong correlation between molecular class and conventional histopathologic variables (ER status, grade). For example, in one study, all luminal-type cancers were ER-positive and 63% of these were also low or intermediate grade, in contrast to 95% of basal-like cancers that were ER-negative, 91% of which were high grade (Pusztai et al., 2003). These associations partly explain the different clinical outcome observed in different molecular classes. Rouzier et al. studied the pathological outcomes of different molecular subclasses of breast cancer patients. They obtained tumor tissue biopsies from 82 patients with newly diagnosed breast cancer before they were given a commonly used chemotherapy (Taxol/5-fluorouracil, doxorubicin, and cyclophosphamide). Patients with basal-like and erbb-2+ subgroups were found to have the highest rates (45% each) of a pathological complete response (CR), while only 6% of luminal tumors had a complete response. Among the normal-like cancers, no response was seen (Rouzier et al., 2005). None of the 61genes associated with pathologic CR in the basal-like group were associated with pathologic CR in the HER-2+ group, which suggest that the mechanisms of chemotherapy sensitivity may vary across the subtypes. As molecular classification was not independently associated with pathologic CR, the predictive accuracy of the logistic regression models including (a) clinical + pathologic variables, (b) clinical variables + molecular classification, and (c) clinical + pathologic variables + molecular class (Fig. 5) was measured by constructing Receiver Operating Characteristics curve.



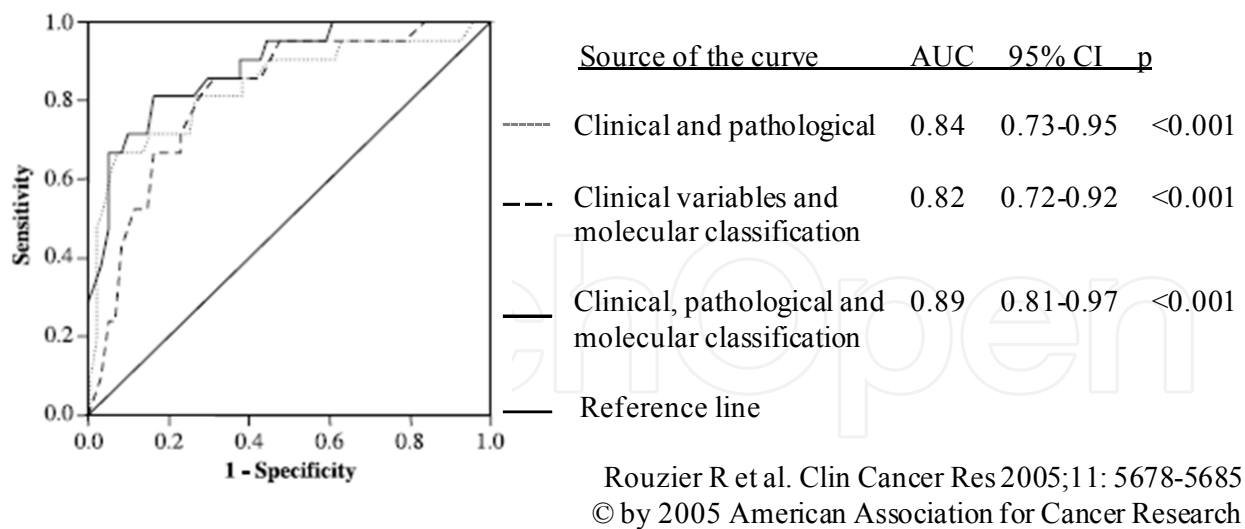


Fig. 5. Receiver Operating Characteristic curves for logistic regression models. Three different prediction models were compared including clinical plus histopathologic variables (model 1), clinical variables plus molecular classification (model 2), and clinical plus histopathologic plus molecularclassification (model 3). All three models were similarly done.

The three models yielded similar area under curve (AUC). This indicates that the molecular class alone can replace histopathological characteristics (estrogen receptor, HER-2 status, or grade) for prediction of pathologic CR but provides little additional information when these characteristics are included. The basal-like and HER-2 tumors were predominantly high nuclear grade and the basal-like tumors were almost all estrogen receptor negative and 80% of HER-2 molecular class expresses HER-2. These characteristics are known to be associated with higher likelihood of pathologic CR to preoperative chemotherapy (Rouzier et al., 2002; Abrial et al., 2005; Gennari et al., 2008). Because of this association, incorporation of molecular class into a logistic regression-based predictor of response didn't improve the prediction accuracy compared with using routine clinical and pathologic variables only. Therefore, it is likely that more focused gene signature-based predictors will need to be developed through supervised outcome prediction methods that are differentially expressed between cases of pathologic CR and residual disease.

5. Screening and detection of breast cancer

Screening uses test/techniques to check people who might have that disease (breast cancer) and to allow it to be treated at an early stage when a cure is more likely. Breast cancer screening is done by mammography (low dose x-ray technique to visualize the internal structure of the breast). On average, mammography will detect about 80-90% of the breast cancers in women without symptoms. Testing is somewhat more accurate in postmenopausal than in premenopausal women (Michaelson et al., 2002). It can reduce breast cancer mortality by 20-30% in women over 50 yrs old in high-income countries when the screening coverage is over 70% (IARC, 2008). MRI, or magnetic resonance imaging, is a technology that uses magnets and radio waves to produce detailed cross-sectional images of the inside of the body. MRI does not use x-rays, so it does not involve any radiation

exposure. Breast MRI is not recommended as a routine screening tool for all women as MRI screening results in more false positives results. However, it is recommended for screening women who are at high risk for breast cancer, usually due to a strong family history and/or a mutation in genes such as BRCA1 or BRCA2. It is also used for gathering more information about the suspicious area found on mammogram and ultrasound and also used for monitoring recurrence after treatment. Positron emission tomography (PET) scan creates computerized images of chemical changes that take place in the tissue. PET scans may play a role in determining whether a breast mass is cancerous. However, PET scans are more accurate in detecting larger and more aggressive tumors than they are in locating tumors that are smaller than 8 mm and/or less aggressive. They may also detect cancer when other imaging techniques show normal results. PET scans may be helpful in evaluating and staging recurrent disease. Clinical breast examination (CBE) is recommended for average risk asymptomatic in the age group of 20-30 to observe any changes in shape, texture, and location of lumps (situated in skin or deeper tissues). The breasts should also be inspected for skin changes (e.g., dimpling, redness) and asymmetry. The area under both arms will also be examined. CBE is also an opportunity for a woman and her health care provider to discuss changes in her breasts, early detection testing, and factors in the woman's history that might make her more likely to develop. All women should become familiar with both the appearance and feel of their breasts to detect any changes and report them promptly to their physician. A woman who chooses to perform breast self-exams (BSE) should receive instructions and have her technique reviewed by a health care professional who performs clinical examinations. Finding and reporting breast changes early offers women the best opportunity for improving breast cancer treatment and reducing breast cancer deaths. Mammotome® is a vacuum assisted breast biopsy that uses image guidance such as stereotactic x-ray, ultrasound, MRI and/or molecular imaging to perform breast biopsies. Mammotome offers a full array of tissue markers to mark the biopsy site for follow-up observations. There have been no reports of serious complications resulting from the Mammotome breast biopsy system. Ductal lavage is another screening and investigational technique for collecting samples of cells from breast ducts for analysis under a microscope. A saline (salt water) solution is introduced into a milk duct through a catheter (a thin, flexible tube) that is inserted into the opening of the duct on the surface of the nipple. Fluid, which contains cells from the duct, is withdrawn through the catheter. The cells are checked under a microscope to identify changes that may indicate cancer or changes that may increase the risk for breast cancer. The procedure is used to identify precancerous cells, called atypical cells. Ductal lavage is currently performed only on women who have multiple breast cancer risk factors to detect breast cancer before it starts. Ductal lavage appears to have low sensitivity and high specificity for breast cancer detection, possibly because cancer-containing ducts fail to yield fluid or have benign or mildly atypical cytology (Khan et al., 2004).

## 6. Breast cancer treatment

Breast cancer treatment depends on stage, age, hormonal and receptor status. Most women with breast cancer will undergo some type of surgery. Surgery is often combined with other treatments such as radiation therapy, chemotherapy, hormone therapy, and targeted therapy.

### 6.1 Surgery

Most patients with breast cancer have surgery to remove the tumor mass from the breast. The types of breast cancer surgery differ in the amount of tissue that is removed with the tumor, depending on the tumor's characteristics, whether it has spread (metastasized), and patient's personal feelings. Some of the lymph nodes under the arm are usually taken out and looked under a microscope to see if they contain cancer cells. Breast-conserving surgery or lumpectomy is done to remove the cancer cells but not the breast itself. Lumpectomy is almost always followed by about 5 to 7 weeks of radiation therapy. A woman who chooses lumpectomy and radiation will have the same expected long-term survival as if she had chosen mastectomy (Fisher et al., 2002). Simple or total mastectomy includes removal of the entire breast. Modified radical mastectomy includes removal of the entire breast and lymph nodes under the arm, but does not include removal of the underlying chest wall muscle, as with a radical mastectomy. Both lumpectomy and mastectomy are often accompanied by removal of regional lymph nodes from the axilla, or armpit, to determine the involvement of lymph nodes and spreading of the disease. Axillary lymph node metastasis is the most important prognostic factor for the disease-free and overall survival. Patients with multiple unfavorable risk factors such as positive axillary lymph nodes, high nuclear grade, young age and large tumor showed poorer local control and disease-free survival than patients without any risk factors, and so more aggressive treatment is required for these patients. Adjuvant radio-, chemo-, or targeted therapy has improved the prognosis of patients with higher risk factors (Lee & Chan, 1984; Kim et al., 2005).

### 6.2 Radiation therapy

Radiation therapy is a cancer treatment that uses high-energy x-rays or other types of radiation to destroy cancer cells remaining in the breast, chest wall, or underarm area after surgery, or to reduce the size of a tumor before surgery (Early Breast Cancer Trialists' Collaborative Group, 2000). There are two types of radiation therapy. External radiation therapy uses a machine outside the body to send radiation toward the cancer. Internal radiation therapy uses a radioactive substance sealed in needles, seeds, wires, or catheters that are placed directly into or near the cancer. The way the radiation therapy is given depends on the type and stage of the cancer being treated. Using traditional clinical and pathological factors, patients can be classified into subgroups by the risk of loco-regional recurrence. In the high-risk groups the absolute benefit of irradiation is larger. However, the patients are over-treated in every subgroup. Substantial proportion of the patients remains free of loco-regional recurrence even in the absence of irradiation, and some patients develop loco-regional recurrence despite postoperative irradiation. Molecular subtypes on the basis of receptors may provide sufficient information to allow accurate individual risk assessment to identify patients who might benefit from receiving post mastectomy radiotherapy (PMRT). A significantly improved overall survival after PMRT was seen only among patients of luminal subtypes. No significant overall survival improvement after PMRT was found among patients with basal and ERB2 subtypes (Fig. 6). There was also smaller improvements in loco-regional recurrence of breast cancer in basal and ERB2 subtypes as compared to luminal A and luminal B (Kyndi et al., 2008). Hence, the improvement in survival resulting from the use of irradiation is more related to the prevention of local recurrences. Post-irradiation local recurrence increases the risk of mortality, but with good prognostic factors (<4 positive nodes, tumor size <2 cm, Grade 1

malignancy, ER- and PR-positive, HER-2-negative) the 10-year survival is 80-90% (Fodor, 2009).

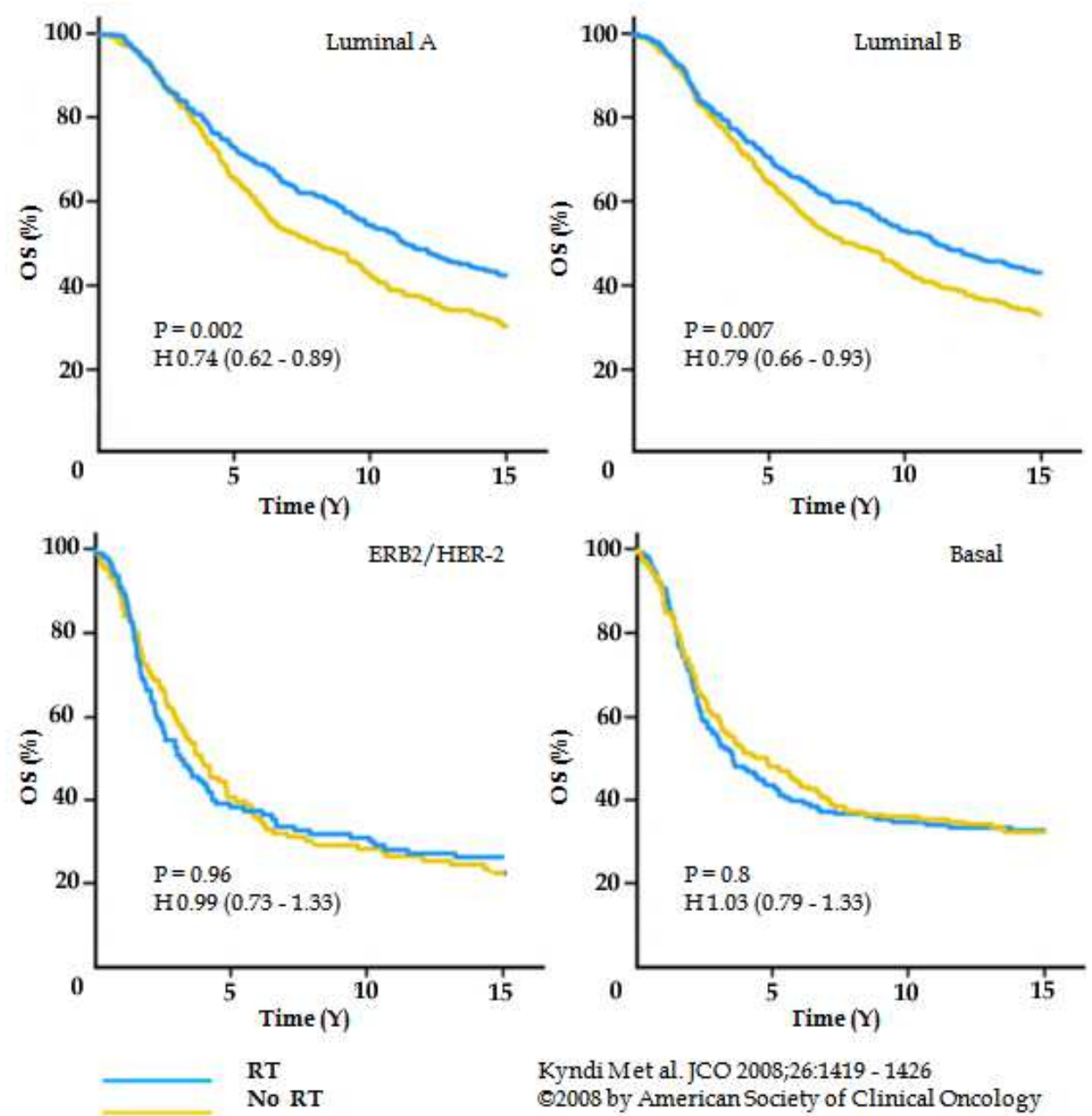


Fig. 6. Overall survival (OS)% of different molecular subtypes of breast cancer patients after receiving post mastectomy radiation therapy (RT). P values and 95% CI of Hazard (H) ratios are shown.

6.3 Chemotherapy and molecular targeted-therapy

Chemotherapeutic drugs are applied in neoadjuvant settings to shrink the size of tumor that has metastasized and also in adjuvant settings to delay the further growth and spread of the tumor. It is found that combinations of drugs are more effective than just one drug alone for breast cancer treatment. The most common drugs recommended to be used in combination in early breast cancer are cyclophosphamide, methotrexate, 5-fluorouracil (CMF



combinations), doxorubicin (Adriamycin), epirubicin, paclitaxel (Taxol), and docetaxol (Taxotere). Although the benefit and clinical outcome of chemotherapy is dependent on clinical and histopathological parameters, but there are a percentage of cases that behave in an unexpected manner, even if the clinical and pathological parameters indicate the opposite (Gonzalez-Angulo et al., 2007). The introduction of hormonal receptor status to the classical clinical parameters improved the clinical outcome (Goldhirsch et al., 2003). The chemotherapeutic drugs are designed to target the specific molecular markers (molecular targeted therapy) overexpressed in cancer tissues. The presence of ER is correlated with a better prognosis, predicting response to hormonal therapies such as tamoxifen and aromatase inhibitors. But still 15-20% of breast cancer patients with ER+ have recurrent disease. It's the luminal B subgroup of previously classified ER+ tumor that is irresponsive to tamoxifen treatment as they co-express EGFRs and shows poor relapse-free survival (RFS) and over-all survival (OS). Thus over-simplified classification based on ER status required additional molecular makers for sub-classification for optimal treatment. The molecular portraits based on gene profiling divides breast carcinomas into luminal (A and B), basal, HER-2 and normal like. Basal and HER-2 types normally overexpress EGFR and HER-2 respectively. EGFR and HER-2 is overexpressed in 17-30% and 20-30% respectively in breast cancer. Both EGFR and HER-2 is associated with poor prognosis and worse clinical outcome. Basal like subtypes are more aggressive and less responsive to conventional chemotherapy and expected to benefit from EGFR-targeted therapies. Tyrosine kinase inhibitors (TKI) (ZD1839, ZD6474) in combined with anthracyclines (doxorubicin, epirubicin) or taxanes based regimens will improve the clinical outcome of the basal subtypes. HER-2 might serve as a marker for tissue HER-2 status, especially for the prediction of benefit from trastuzumab and/or chemotherapy regimens (anthracyclines) (Sandri et al., 2004). Although the molecular profile of the tumor is a major determinant of disease progression and response to treatment, other factors including chemo- sensitivity or resistivity may be of considerable importance. It is found that for 100 node-negative, premenopausal women receiving chemotherapy according to standard criteria, at 5 years 3 are cured by chemotherapy, 83.50 would have been alive without chemotherapy and 13.50 die despite chemotherapy. With application of molecular profiling to predict the outcome (for the same 100 people), the number treated would be reduced to 39.05 (allowing for a false-positive rate equivalent to that seen in the van 't Veer study (van 't Veer et al., 2002), resulting in an increase in the proportion cured (from 3 out of 100 to 3 out of 39 or 8%). If it were possible to predict chemo-responsiveness, it is possible that the number receiving chemotherapy would reduce further from 39.05 to 29.20 (allowing for a false-positive rate equivalent to that seen in the van't Veer study). In this scenario, the proportion cured by chemotherapy would be 3 out of 29.20 (10.16%) (>3-fold increase in survival rate using chemotherapy), and the number of women treated has been reduced by 70.80%. Thus it is found that molecular profiling will enhance the survival benefit of chemotherapeutic regimens, which will be further improved applying the knowledge of chemo-responsiveness as shown in Fig. 7. If accurate determination of chemo-sensitivity were achieved by observing the set of genes responsible for treatment response, the overall number receiving cytotoxic treatment unnecessarily would decrease, and the overall survival benefit derived, per person treated, increase accordingly, as shown in Fig. 7. However, the absolute survival benefit of patients diagnosed with breast cancer would be unaffected and would be improved with more molecular subtypes along with the development of specific agents targeting particular biomarkers (molecular targeted therapy).

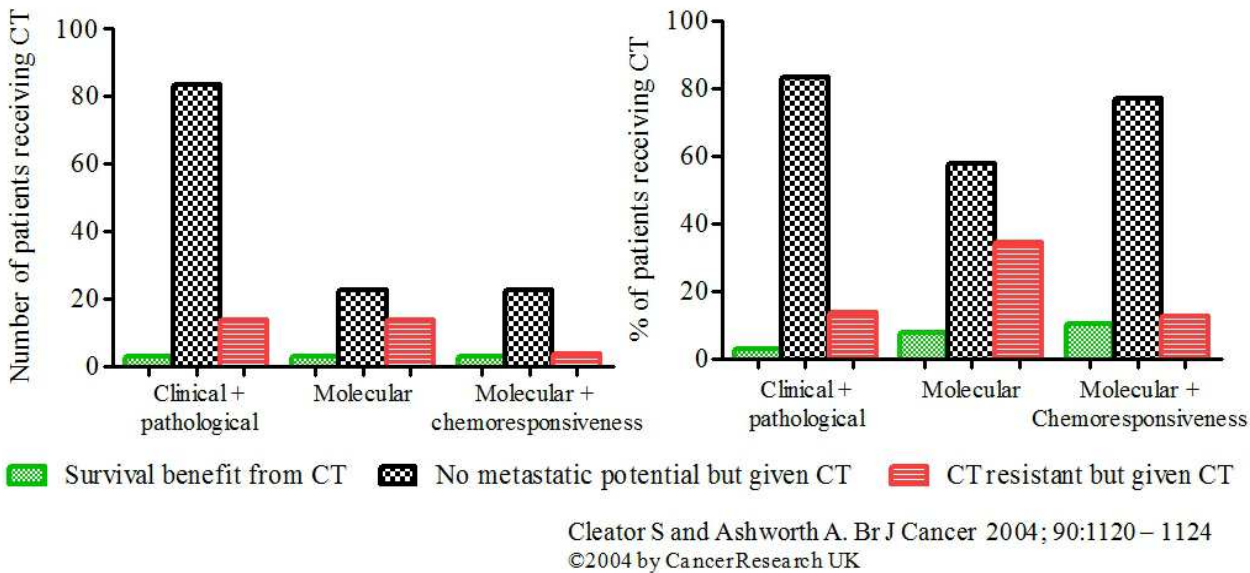


Fig. 7. Model for the effect of molecular profiling on breast cancer. The data shows numbers of premenopausal women with node negative breast cancer receiving chemotherapy (CT), and associated benefit at 5 years. 100 node-negative, premenopausal women receiving chemotherapy according to standard criteria, at 5 years showed survival benefit, no benefit and breast cancer specific death. The two bar graph represents absolute survival benefit and % survival benefit of breast cancer patients receiving chemotherapy. Note that in neither figure has consideration been given to the false-negative rate inherent in molecular profiling. It has been assumed that all deaths occurring were breast cancer related.

7. Conclusion

Adjuvant chemo- and radiotherapy improves survival of patients but it is being increasingly recognized that the benefit is not equal for all patients of breast cancer. Molecular characteristics of the cancer affect sensitivity to chemo- and radiotherapy. In general, ER- (Basal and HER-2) is more sensitive to chemotherapy than ER+ (Luminal A and Luminal B) breast cancer where as ER+ is more sensitive to radiotherapy than ER- breast cancer. The prognostic predictions made by traditional histopathological based models and molecular based models are discordant in about 30% of the cases (van de Vijver et al., 2002), suggesting that one of these methods may be superior to the other or at least that the information they capture is complementary. Corollary to this, it is found that when both the type of classifications are combined (histopathological and molecular), it yield better prognostic values as observed in Fig. 6. It is currently unknown whether genomic tests based on molecular signatures yield a more accurate risk prediction than conventional models. A better prognostic test based on molecular classification with the knowledge of chemo-responsiveness could lead to a reduction in overtreatment of low-risk individuals who are falsely assigned to high-risk category by clinical variables. Such a test could also lead to better overall survival by correctly identifying high-risk individuals who might currently miss out on systemic therapy. Even if molecular classification do not prove to be better than clinical models in prognosis and prediction outcome of breast cancer, inclusion of their results, as additional variables, in current models could improve prognostic predictions.

## 8. References

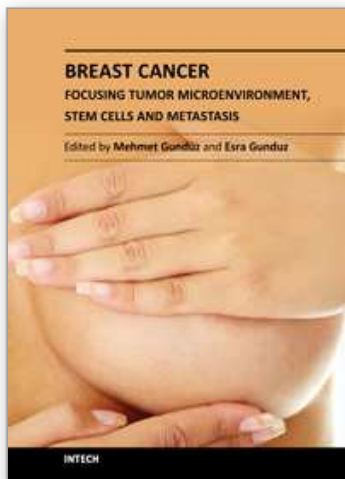
- Abrial, C., Van Praagh, I., Delva, R., Leduc, B., Fleury, J., Gamelin, E., Sillet-Bach, I., Penault-Llorca, F., Amat, S., & Chollet, P. (2005). Pathological and clinical response of a primary chemotherapy regimen combining vinorelbine, epirubicin, and paclitaxel as neoadjuvant treatment in patients with operable breast cancer. *Oncologist*, Vol.10, pp.242-49.
- American Cancer Society. (2010). Breast Cancer Facts and Figures 2009-10: *American Cancer Society, Inc., Atlanta*
- Chang, H. R., Glaspy, J., Allison M. A., Kass, F. C., Elashoff, R., Chung, D. U., & Gornbein, J. (2010). Differential response of triple-negative breast cancer to a docetaxel and carboplatin-based neoadjuvant treatment. *Cancer*, Vol.116, pp.4227-32.
- Coleman, M. P., Quaresma, M., Berrino, F., Lutz, J. M., De Angelis, R., Capocaccia, R., Baili, P., Rachet, B., Gatta, G., Hakulinen, T., Micheli, A., Sant, M., Weir, H. K., Elwood, J. M., Tsukuma, H., Koifman, S., E Silva, G. A., Francisci, S., Santaquilani, M., Verdecchia, A., Storm, H. H., & Young, J. L. (2008). Cancer survival in five continents: a worldwide population-based study (CONCORD). *Lancet Oncol*, Vol.9, pp.730-56.
- Dawood, S., Broglio, K., Kau, S. W., Green, M. C., Giordano, S. H., Meric-Bernstam, F., Buchholz, T. A., Albarracin, C., Yang, W. T., Hennessy, B. T., Hortobagyi, G. N., & Gonzalez-Angulo, A. M. (2009). Triple receptor-negative breast cancer: the effect of race on response to primary systemic treatment and survival outcomes. *J Clin Oncol*, Vol.27, pp.220-26.
- Dent, R., Trudeau, M., Pritchard, K. I., Hanna, W. M., Kahn, H. K., Sawka, C. A., Lickley, L. A., Rawlinson, E., Sun, P., & Narod, S. A. (2007). Triple-negative breast cancer: clinical features and patterns of recurrence. *Clin Cancer Res*, Vol.13, pp.4429-34.
- Early Breast Cancer Trialists' Collaborative Group. (2000). Favourable and unfavourable effects on long-term survival of radiotherapy for early breast cancer: an overview of the randomised trials. Early Breast Cancer Trialists' Collaborative Group. *Lancet*, Vol.355, pp.1757-70.
- Fisher, B., Anderson, S., Bryant, J., Margolese, R. G., Deutsch, M., Fisher, E. R., Jeong, J. H., & Wolmark, N. (2002). Twenty-year follow-up of a randomized trial comparing total mastectomy, lumpectomy, and lumpectomy plus irradiation for the treatment of invasive breast cancer. *N Engl J Med*, Vol.347, pp.1233-41.
- Fodor, J. (2009). [Evidence-based radiotherapy in the treatment of early-stage invasive breast cancer: traditional clinical features and biomarkers]. *Magy Onkol*, Vol.53, pp.7-14.
- Gennari, A., Sormani, M. P., Pronzato, P., Puntoni, M., Colozza, M., Pfeffer, U., & Bruzzi, P. (2008). HER2 status and efficacy of adjuvant anthracyclines in early breast cancer: a pooled analysis of randomized trials. *J Natl Cancer Inst*, Vol.100, pp.14-20.
- Goldhirsch, A., Wood, W. C., Gelber, R. D., Coates, A. S., Thurlimann, B., & Senn, H. J. (2003). Meeting highlights: updated international expert consensus on the primary therapy of early breast cancer. *J Clin Oncol*, Vol.21, pp.3357-65.
- Gonzalez-Angulo, A. M., Morales-Vasquez, F., & Hortobagyi, G. N. (2007). Overview of resistance to systemic therapy in patients with breast cancer. *Adv Exp Med Biol*, Vol.608, pp.1-22.
- Hulka, B. S., & Moorman, P. G. (2001). Breast cancer: hormones and other risk factors. *Maturitas*, 38:103-113; discussion 103-6.

- Kelsey, J. L., & Gammon, M. D. (1990). Epidemiology of breast cancer. *Epidemiol Rev*, Vol. 12, pp.228-40.
- Khan, S. A., Wiley, E. L., Rodriguez, N., Baird, C., Ramakrishnan, R., Nayar, R., Bryk, M., Bethke, K. B., Staradub, V. L., Wolfman, J., Rademaker, A., Ljung, B. M., & Morrow, M. (2004). Ductal lavage findings in women with known breast cancer undergoing mastectomy. *J Natl Cancer Inst*, Vol. 96, pp.1510-17.
- Kim, K. J., Huh, S. J., Yang, J. H., Park, W., Nam, S. J., Kim, J. H., Lee, J. H., Kang, S. S., Lee, J. E., Kang, M. K., Park, Y. J., & Nam, H. R. (2005). Treatment results and prognostic factors of early breast cancer treated with a breast conserving operation and radiotherapy. *Jpn J Clin Oncol*, Vol. 35, pp.126-33.
- Kyndi, M., Sorensen, F. B., Knudsen, H., Overgaard, M., Nielsen, H. M., & Overgaard, J. (2008). Estrogen receptor, progesterone receptor, HER-2, and response to postmastectomy radiotherapy in high-risk breast cancer: the Danish Breast Cancer Cooperative Group. *J Clin Oncol*, Vol.26, pp.1419-26.
- Lee, Y. T., & Chan, L. S. (1984). Surgical treatment of carcinoma of the breast: IV. Prognosis according to extent of involvement of the axillary lymph nodes. *J Surg Oncol*, Vol. 27, pp.35-41.
- Michaelson, J., Satija, S., Moore, R., Weber, G., Halpern, E., Garland, A., Puri, D., & Kopans, D. B. (2002). The pattern of breast cancer screening utilization and its consequences. *Cancer*, Vol. 94, pp.37-43.
- Moore, M. P., & Kinne, D. W. (1996). Breast sarcoma. *Surg Clin North Am*, Vol.76, pp.383-92.
- Perou, C. M., Sorlie, T., Eisen, M. B., van de Rijn, M., Jeffrey, S. S., Rees, C. A., Pollack, J. R., Ross, D. T., Johnsen, H., Akslen, L. A., Fluge, O., Pergamenschikov, A., Williams, C., Zhu, S. X., Lonning, P. E., Borresen-Dale, A. L., Brown, P. O., & Botstein, D. (2000). Molecular portraits of human breast tumours. *Nature*, Vol.406, pp.747-52.
- Pusztai, L., Ayers, M., Stec, J., Clark, E., Hess, K., Stivers, D., Damokosh, A., Sneige, N., Buchholz, T. A., Esteva, F. J., Arun, B., Cristofanilli, M., Booser, D., Rosales, M., Valero, V., Adams, C., Hortobagyi, G. N., & Symmans, W. F. (2003). Gene expression profiles obtained from fine-needle aspirations of breast cancer reliably identify routine prognostic markers and reveal large-scale molecular differences between estrogen-negative and estrogen-positive tumors. *Clin Cancer Res*, Vol. 9, pp.2406-15.
- Rakha, E. A., El-Sayed, M. E., Green, A. R., Lee, A. H., Robertson, J. F., & Ellis, I. O. (2007). Prognostic markers in triple-negative breast cancer. *Cancer*, Vol. 109, pp.25-32.
- Reis-Filho, J. S., Milanezi, F., Carvalho, S., Simpson, P. T., Steele, D., Savage, K., Lambros, M. B., Pereira, E. M., Nesland, J. M., Lakhani, S. R., & Schmitt, F. C. (2005). Metaplastic breast carcinomas exhibit EGFR, but not HER2, gene amplification and overexpression: immunohistochemical and chromogenic in situ hybridization analysis. *Breast Cancer Res*, Vol. 7, pp.R1028-35.
- Rouzier, R., Extra, J. M., Klijanienko, J., Falcou, M. C., Asselain, B., Vincent-Salomon, A., Vielh, P., & Bournstyn, E. (2002). Incidence and prognostic significance of complete axillary downstaging after primary chemotherapy in breast cancer patients with T1 to T3 tumors and cytologically proven axillary metastatic lymph nodes. *J Clin Oncol*, Vol. 20, pp.1304-10.
- Rouzier, R., Perou, C. M., Symmans, W. F., Ibrahim, N., Cristofanilli, M., Anderson, K., Hess, K. R., Stec, J., Ayers, M., Wagner, P., Morandi, P., Fan, C., Rabiul, I., Ross, J.



- S., Hortobagyi, G. N., & Pusztai, L. (2005). Breast cancer molecular subtypes respond differently to preoperative chemotherapy. *Clin Cancer Res*, Vol. 11:5678-85.
- Sandri, M. T., Johansson, H., Colleoni, M., Zorzino, L., Passerini, R., Orlando, L., & Viale, G. (2004). Serum levels of HER2 ECD can determine the response rate to low dose oral cyclophosphamide and methotrexate in patients with advanced stage breast carcinoma. *Anticancer Res*, Vol. 24, pp.1261-66.
- Sorlie, T., Perou, C. M., Tibshirani, R., Aas, T., Geisler, S., Johnsen, H., Hastie, T., Eisen, M. B., van de Rijn, M., Jeffrey, S. S., Thorsen, T., Quist, H., Matese, J. C., Brown, P. O., Botstein, D., Eystein Lonning, P., & Borresen-Dale, A. L. (2001). Gene expression patterns of breast carcinomas distinguish tumor subclasses with clinical implications. *Proc Natl Acad Sci U S A*, Vol. 98, pp.10869-74.
- Sotiriou, C., Neo, S. Y., McShane, L. M., Korn, E. L., Long, P. M., Jazaeri, A., Martiat, P., Fox, S. B., Harris, A. L., & Liu, E. T. (2003). Breast cancer classification and prognosis based on gene expression profiles from a population-based study. *Proc Natl Acad Sci U S A*, Vol. 100, pp.10393-98.
- Tamimi, R. M., Baer, H. J., Marotti, J., Galan, M., Galaburda, L., Fu, Y., Deitz, A. C., Connolly, J. L., Schnitt, S. J., Colditz, G. A., & Collins, L. C. (2008). Comparison of molecular phenotypes of ductal carcinoma in situ and invasive breast cancer. *Breast Cancer Res*, Vol. 10, pp.R67.
- van 't Veer, L. J., Dai, H., van de Vijver, M. J., He, Y. D., Hart, A. A., Mao, M., Peterse, H. L., van der Kooy, K., Marton, M. J., Witteveen, A. T., Schreiber, G. J., Kerkhoven, R. M., Roberts, C., Linsley, P. S., Bernards, R., & Friend, S. H. (2002). Gene expression profiling predicts clinical outcome of breast cancer. *Nature*, Vol. 415, pp.530-36.
- van de Vijver, M. J., He, Y. D., van't Veer, L. J., Dai, H., Hart, A. A., Voskuil, D. W., Schreiber, G. J., Peterse, J. L., Roberts, C., Marton, M. J., Parrish, M., Atsma, D., Witteveen, A., Glas, A., Delahaye, L., van der Velde, T., Bartelink, H., Rodenhuis, S., Rutgers, E. T., Friend, S. H., & Bernards, R. (2002). A gene-expression signature as a predictor of survival in breast cancer. *N Engl J Med*, Vol. 347, pp.1999-2009.

IntechOpen



## **Breast Cancer - Focusing Tumor Microenvironment, Stem cells and Metastasis**

Edited by Prof. Mehmet Gunduz

ISBN 978-953-307-766-6

Hard cover, 584 pages

**Publisher** InTech

**Published online** 14, December, 2011

**Published in print edition** December, 2011

Cancer is the leading cause of death in most countries and its consequences result in huge economic, social and psychological burden. Breast cancer is the most frequently diagnosed cancer type and the leading cause of cancer death among females. In this book, we discussed characteristics of breast cancer cell, role of microenvironment, stem cells and metastasis for this deadly cancer. We hope that this book will contribute to the development of novel diagnostic as well as therapeutic approaches.

### **How to reference**

In order to correctly reference this scholarly work, feel free to copy and paste the following:

Siddik Sarkar and Mahitosh Mandal (2011). Breast Cancer: Classification Based on Molecular Etiology Influencing Prognosis and Prediction, Breast Cancer - Focusing Tumor Microenvironment, Stem cells and Metastasis, Prof. Mehmet Gunduz (Ed.), ISBN: 978-953-307-766-6, InTech, Available from: <http://www.intechopen.com/books/breast-cancer-focusing-tumor-microenvironment-stem-cells-and-metastasis/breast-cancer-classification-based-on-molecular-etiology-influencing-prognosis-and-prediction>

**INTECH**  
open science | open minds

### **InTech Europe**

University Campus STeP Ri  
Slavka Krautzeka 83/A  
51000 Rijeka, Croatia  
Phone: +385 (51) 770 447  
Fax: +385 (51) 686 166  
[www.intechopen.com](http://www.intechopen.com)

### **InTech China**

Unit 405, Office Block, Hotel Equatorial Shanghai  
No.65, Yan An Road (West), Shanghai, 200040, China  
中国上海市延安西路65号上海国际贵都大饭店办公楼405单元  
Phone: +86-21-62489820  
Fax: +86-21-62489821

© 2011 The Author(s). Licensee IntechOpen. This is an open access article distributed under the terms of the [Creative Commons Attribution 3.0 License](https://creativecommons.org/licenses/by/3.0/), which permits unrestricted use, distribution, and reproduction in any medium, provided the original work is properly cited.

IntechOpen

IntechOpen