

We are IntechOpen, the world's leading publisher of Open Access books Built by scientists, for scientists

6,900

Open access books available

185,000

International authors and editors

200M

Downloads

Our authors are among the

154

Countries delivered to

TOP 1%

most cited scientists

12.2%

Contributors from top 500 universities



WEB OF SCIENCE™

Selection of our books indexed in the Book Citation Index
in Web of Science™ Core Collection (BKCI)

Interested in publishing with us?
Contact book.department@intechopen.com

Numbers displayed above are based on latest data collected.
For more information visit www.intechopen.com



Prevention of Sudden Death – Implantable Cardioverter Defibrillator and/or Ventricular Radiofrequency Ablation

Andrea Colella¹, Marzia Giaccardi², Antonella Sabatini³,
Alfredo Zuppiroli² and Gian Franco Gensini¹

¹*Heart and Vessels Department AOU Careggi, Florence*

²*Cardiology Department ASL 10, Florence*

³*MIT (USA), Finbest, Florence*

^{1,2,3}*Italy*

³*USA*

1. Introduction

Sudden cardiac death (SCD) is defined as death from cardiac causes occurring unexpectedly within 1 hour of onset of symptoms. About 80% of SCDs are due to ventricular tachyarrhythmia that is, ventricular tachycardia and ventricular fibrillation. The remaining 20% consists of a number of conditions, including cardiomyopathies (10–15%), other structural heart defects (less than 5%) and bradycardia. SCD is responsible for more deaths than cancer, stroke, and AIDS combined (CDC, 2002). The overall incidence of SCD in the United States and Europe is 1 to 2 per 1000 people (0.1% to 0.2%) annually. Almost 80% of all SCDs occur at home. The 10%-25% survival rate is low and has not been improved by the automatic external defibrillator in patients with moderate risk (de Vreede-Swagemakers, 1997; Bardy, 2008; Myerburg, 2001). On the other hand, several clinical trials showed that the implantable cardioverter defibrillator (ICD) could prevent SCD and reduce overall mortality in some patients with severe left ventricular dysfunction. For these reasons, ICD therapy has become the first choice strategy to prevent SCD from malignant ventricular tachyarrhythmia in high-risk patients. However, there are numerous well-recognized limitations to ICD therapy. These include the effects and the result of appropriate and inappropriate ICD shocks, the cost of the devices, complications related both to the implantation procedure and to subsequent device function, device malfunction, and restricted efficacy despite normal device function in presence of significant concomitant disease and in particular in presence of severe left ventricular dysfunction. Several possible solutions have been proposed in the clinical practice, these include better patients' selection for ICD implantation, better ICD programming, better medical therapy and arrhythmic substrate ablation. The role of catheter ablation of ventricular tachycardia in patients with structural heart disease has been increasing in the last 2 decades. The mechanisms of ventricular tachycardia are now clearer, and the electroanatomic mapping systems have made precise activation and substrate mapping more feasible; therefore, the potential for doing catheter ablation of ventricular tachycardia has increased dramatically in the past

several years. Now, multiple and/or unstable ventricular tachycardias, polymorphic ventricular tachycardias, and ventricular fibrillation in selected cases can be targeted by different ablation strategies (Raymond, 2009). General recommendations for the use of catheter ablation are well documented; at this time, an open question remains, namely, whether catheter ablation can replace ICD in patients with structural heart disease.

2. Implantable cardioverter defibrillator

In 1980 Mirowski and colleagues (Mirowski, 1980) implanted the first ICD in a young female with recurrent ventricular fibrillation and provided an innovative approach to aborted SCD. This milestone event started a prolific period of research in SCD prevention and therapy. Although the ICD was considered a treatment of last resort during that incipient stage, subsequent years have witnessed expansion of indications for ICD implantation. (Epstein, 2008). Several large-scale clinical trials have demonstrated its efficacy for both primary and secondary prevention of SCD in patients with ischemic and nonischemic cardiomyopathy. The advent of transvenous ICD technology and their potential effects in prevention of SCD elicited also several trials to compare the ICD with conventional antiarrhythmic drug therapy alone. In such high-risk patients, ICD therapy has been shown to improve survival rate compared with a neutral or harmful effect of chronic pharmacological therapy (Dimarco, 2003; Reiffel, 2005). In light of these excellent results, the number of ICD implantations has increased significantly in the last decade, with a simultaneous reduction of the use of stand-alone antiarrhythmic drugs for ventricular indications. (Al-Khatib, 2003; Hine, 1989; Zhan, 2008).

2.1 ICD-related complications

Because of the growing number of ICD patients, ICD-related problems are increasingly encountered and patients undergoing one or multiple shocks are today frequently seen in emergency departments, hospital wards, or ICD clinics.

Therefore, personnel working in these environments should have specific knowledge concerning the management of ICD-related problems. Typically, patients who receive ICDs are at high risk for recurrent arrhythmia; hence, most patients receive one or more ICD treatments for spontaneous arrhythmias after implantation (Dimarco, 2003). Despite the technological evolution of ICD systems, more than 20% of shocks are triggered by supraventricular arrhythmia; thus, they are inappropriate (Dorian, 2004; Nanthakumar, 2000; Rosenqvist, 1998).

The most common cause of inappropriate ICD shocks was atrial fibrillation (44%), followed by other supraventricular tachycardias, including sinus tachycardia (36%), and abnormal sensing (20%) (Daubert, 2008). If appropriate ICD shocks save lives, it may emerge that a few inappropriate shocks are a small price to pay (Raitt, 2008). Inappropriate shocks have a downside. There is a growing medical literature on the adverse psychological consequences of ICD shocks, whether appropriate or not. The ICD shocks are perceived as awfully painful. After an ICD shock, the patient may become immobilized, fearing that any movement or activity might activate another shock. Multiple shocks are the most frightening for patients, causing them to wonder if the device is really working or if it might even kill them. Those individuals who experience an ICD shock exhibit higher levels of psychological distress, anxiety, anger, and depression than those who do not. (Ahmad, 2000; Dunbar, 1993; Dougherty, 1995). The ICD shocks lead to greater psychological distress for

family members as well (Luderitz, 1994). Anxiety after ICD shocks remains elevated for an unknown amount of time, and then begins to return to normal levels as long as no further shocks take place (Fricchione, 1989). The level of anxiety, depression, and poor quality of life is comparable in incidence to patients resuscitated from cardiac arrest and cardiopulmonary bypass surgery (Bostwick, 2007). In addition, ICD implantation is associated with neuropsychological impairment that significantly affects acute and long-term cognitive function (Hallas, 2010).

2.2 Electrical storm

Another significant problem is the electrical storm, which is defined as having more than three shocks in a 24-hours period, occurring in 10% to 20% of patients during the first 2 years after ICD implantation (Exner, 2001; Dunbar, 1999). An electrical storm establishes an adverse conditioned response including avoidance of activities that may have been associated with the shocks, leading to heightened self-monitoring of bodily functions, increased anxiety, uncertainty, and increased dependence. In some ICD patients, this condition leads to a reactive depression, helplessness, and post-traumatic stress disorder. In addition, an electrical storm is associated with increased mortality (Credner, 1998; Arya, 2006).

2.3 Mortality in patients with ICD

Inappropriate ICD shocks may not only have adverse psychological consequences but also adverse medical consequences, such as a higher mortality than patients who did not suffer inappropriate shocks, with a hazard ratio of 2.29 ($p=0.025$) (Daubert & Zareba, 2008). Similarly, patients with appropriate shocks also had an increased overall mortality with a hazard ratio between 3 and 4. The higher hazard ratio arises in patients who had both appropriate and inappropriate shocks. In a multivariate analysis, predictors of inappropriate shocks included age > 70 years (hazard ratio 1.9, 95% CI 1.3-2.5; $p=0.01$) and history of atrial fibrillation (hazard ratio 2.0, 95% CI 1.5-2.7; $p<0.01$). The occurrence of only one inappropriate shock showed an all-cause mortality hazard ratio of 1.6 (95% CI 1.1-2.3; $p=0.01$), adjusted for history of atrial fibrillation, age, NYHA functional class, renal function, QRS duration, and beta-blockers use. Each additional inappropriate shock corresponded to a hazard ratio of 1.4 (95% CI 1.2-1.7; $p=0.01$), such that the risk was more than triple after a total of five such shocks (Johannes, 2011). It is interesting to investigate the causality between ICD shocks and an increased risk of death. It is especially reasonable to postulate that patients with progressive heart failure, and therefore increased mortality, might be more likely to develop atrial fibrillation and to suffer inappropriate ICD shocks. These same patients may also be more likely to exhibit ventricular tachycardia or ventricular fibrillation induced by progressive congestive heart failure and to undergo appropriate ICD shocks before dying of congestive heart failure. Depending on the ventricular rate and ICD programming, atrial fibrillation and sinus tachycardia can lead to antitachycardia pacing instead of ICD shocks. If rapid atrial fibrillation and sinus tachycardia were markers for increased mortality, then one would expect inappropriate antitachycardia pacing to be associated with increased mortality as well. In contrast to this expectation, in the MADIT II population, although both appropriate and inappropriate shocks were associated with an increased total mortality, appropriate and inappropriate antitachycardia pacing was not. In fact, having only antitachycardia pacing episodes and no shocks was associated with a trend toward lower mortality. Various likely contributions of ICD shocks to increased total mortality might subsist. Several possible explanations are debated. The first explanation is a

direct damage on the myocardium. Animal models have demonstrated a vast array of potentially deleterious effects of DC shocks including alterations in cellular morphology, biochemical function, electrophysiologic function, and hemodynamic function (Tedeschi, 1954; Van Vleet, 1977; Babbs, 1980; Jones, 1980; Wilson, 1988; Trouton, 1992).

Many of the morphologic, biochemical, electrophysiologic and hemodynamic adverse effects of high-intensity DC shocks reported in animals models have also been noted, although with lower frequency, in patients who have received DC shocks of clinically significant intensities. As in animal models, many of these functional changes have been demonstrated to last for minutes to hours as opposed to seconds. The immediacy of post-shock electromechanical dissociation suggests that necrosis is not the cause of the phenomenon. Instead, it is likely that an instantaneous functional abnormality is accountable for electromechanical dissociation. This probability is supported by reports of severe hemodynamic deterioration after internal DC shocks during ICD implantation procedures (Avitall, 1990; Steinbeck, 1994). A severe manifestation of this phenomenon could be expressed as sudden death due to electromechanical dissociation that is the most common mechanism of sudden death in patients with a functioning ICD in place and is associated with high-energy shocks in patients with advanced congestive heart failure. (Mitchell, 2002). The protection afforded by the ICD against sudden arrhythmic death is not absolute, being the rate of sudden death among patients with ICD approximately 5%. If the majority of patients receiving ICDs is similar to those patients included in randomized clinical trials, then ICDs can be expected to be 60 to 70% effective in reducing SCD. This may be more effective than any other available therapy and is thought to be additive to reduction of SCD due to other therapies such as beta-blockers and angiotensin converting enzyme inhibitors. On the other hand, it should serve as a reminder to physicians of the importance of optimization of ICD programming and medical therapy and to patients with regard to compliance with medications and recommended life-style modifications as these measures will reduce their risk (Anderson, 2005).

The second explanation is a possible non-direct damage on the myocardium for the adverse effects of ICD shocks that could direct to increased mortality. We have already outlined the adverse psychological effects of ICD shocks, anxiety and depression, that can set off a cascade of events, including poor compliance to medical therapy, that culminates in an increased risk of death in patients with congestive heart failure. Whether or not there is a causal relationship between ICD shocks and the associated increase in mortality, the psychological effects of shocks alone are reason to do everything possible to reduce the incidence of appropriate and inappropriate shocks (Raitt, 2008).

The extensive implementation of ICD therapy has changed the natural history of ventricular tachycardia (Mason, 1993; Connolly, 2000; AVID Investigators, 1997).

2.4 Approaches to reduce ICD therapy

CDs effectively terminate ventricular arrhythmias through either antitachycardia pacing or shocks and comprise the standard of care for patients at high risk for ventricular arrhythmias. However, ICDs do not prevent the occurrence of ventricular arrhythmias. Patients who, formerly, would have suffered sudden death, now survive to experience recurrent ventricular tachycardia and ICD therapy; thus, shock delivery is administered in a large proportion to patients who have experienced at least one ventricular arrhythmia (Connolly, 2006; Credner, 1998).

2.4.1 Patients selection

There are different approaches to reduce the incidence of appropriate and inappropriate shocks. The first line of defense is good patients' selection for ICD implantation. There is a well-documented increased complication rate for non-guideline-based ICD implantation. In particular, there was an excess of 4 deaths per 1000 ICD implants when the device was implanted outside the guidelines. (Kadish, 2011). The age at implant of patients is very important. Indeed in elderly patients, pooled analysis of the 3 trials considered most relevant to current use of ICDs for primary prevention (MADIT-II, DEFINITE, and SCD-HeFT) showed that prophylactic ICD therapy was associated with a nonsignificant reduction in all-cause mortality compared with medical therapy (HR, 0.81 [95% CI, 0.62 to 1.05]; $P=0.11$). Analyses that included the 2 studies of early enrolled post-acute myocardial infarction patients (DINAMIT and IRIS), also showed no statistically significant decrease in mortality with prophylactic ICD therapy (HR, 0.97 [CI, 0.78 to 1.19]; $P=0.75$) (Santangeli, 2010). Patients who received a non-evidence-based ICD had significantly more comorbidities than patients who received an evidence-based device and were at a higher risk of postprocedural complications (including death). The increased prevalence of comorbidities in recipients of non-evidence based ICDs is unquestionably associated with an increased risk of competing causes of death (Al-Khatib, 2011). While a small risk of complications is acceptable when a procedure has been shown to improve outcomes, no risk is acceptable if a procedure has no demonstrated benefit.

2.4.2 ICD programming

The second line of defense is ICD programming. In the MADIT II trial, AF was the most common cause of inappropriate shocks. The patients provided with the stability detection algorithm programmed on in their ICDs, which is designed to prevent shocks for atrial fibrillation, were less likely to have inappropriate shocks (Daubert, 2008). Other detection algorithms are available on many ICDs that evaluate the morphology of tachycardias or the timing and frequency of atrial and ventricular activation. They prevent inappropriate shocks for supraventricular rhythms such as atrial fibrillation and sinus tachycardia. These algorithms help to prevent inappropriate shocks. The next step in reducing ICD shocks is programming the devices to use antitachycardia pacing instead of shocks whenever possible. Currently, many electrophysiologists do not routinely program antitachycardia pacing in patients with ICDs. By protocol, antitachycardia pacing was not enabled in the SCD-HeFT (Bardy, 2005). Arguing in favor of the usefulness and efficacy of antitachycardia pacing is the Pain Free II study, which showed that aggressive use of antitachycardia pacing, even for very fast episodes of ventricular tachycardia, was effective and reduced the risk of shocks (Wathen, 2004). Some physicians are concerned that an ineffective antitachycardia pacing will delay tachycardia termination. In response to this concern, one ICD manufacturer has introduced a characteristic in which antitachycardia pacing is used to try to terminate ventricular arrhythmias while the capacitor is charging in preparation for an ICD shock. If the antitachycardia pacing works, the shock is aborted; otherwise, the shock delivery is not delayed. Given the adverse psychological effects of ICD shocks and the possibility that shocks may increase mortality, these programming features should probably be used whenever possible (Raitt, 2008).

2.4.3 Medical therapy

It is less clear whether medical therapy can reduce the risk of ICD shocks. If, in fact, exacerbation of congestive heart failure leads to ICD shocks, perhaps, more aggressive

congestive heart failure treatment in patients with ICDs, and use of congestive heart failure monitoring protocols built into some ICDs might prevent some appropriate and inappropriate shocks. It is less clear whether empiric antiarrhythmic therapy prevents ICD shocks; in addition, such therapy cannot be recommended at this time because of the risk of proarrhythmia and the cardiac and noncardiac side effects of antiarrhythmic medications (Raitt, 2008). Beyond aggressive treatment of ischemia and heart failure, preventive treatments for inhibition of ventricular tachycardia are limited. Three agents have been demonstrated in randomized clinical trials to reduce ICD therapies. Amiodarone resulted in a substantial decline in ICD shocks compared with beta-blockers in patients who had experienced prior ventricular arrhythmias. Sotalol moderately reduced shocks (after a 3-week blanking period) in the same population and increased shock-free survival in a placebo-controlled trial (Raitt, 2008). Azimilide has been found to reduce all-cause shocks and symptomatic ventricular tachycardia in a placebo-controlled study (Dorian, 2004). Unfortunately, each of these agents carries significant risk of harmful side-effects. The proarrhythmic mortality risk of sotalol (Waldo, 1996) may be both attenuated in ICD patients, and may be increased in presence of heart failure, diuretic use and older age – all common features of patients with ischemic cardiomyopathy and ventricular tachycardia. Amiodarone use is also associated with a high incidence of adverse effects (Brendorp, 2002), which are moderate at low doses (Vorperian, 1997); on the other hand, they increase with dose and duration such that, in long-term use, side-effects or recurrent arrhythmia are seen very frequently (Bokhari, 2004). Amiodarone use, nephropathy, low left ventricular ejection fraction, and supraventricular tachycardia are independent predictors of cardiac death (Worck, 2007). One can speculate that proarrhythmia and/or increased defibrillation thresholds could play a role in the association with increased mortality (Khalighi, 1997; Zhou, 1998). In addition, amiodarone harmfully affected survival in NYHA III patients in the SCD-HeFT (Bardy, 2005). Azimilide has not demonstrated a change in mortality and is associated with a relatively low rate of torsades de pointes (Camm, 2004; Pratt, 2006), but has not been made available for clinical use. Dronedarone has been associated with higher mortality in the situation of heart failure. Other antiarrhythmic drugs, including dronedarone and dofetilide, have been disappointing, hence, nonpharmacologic alternatives are needed. (Echt, 1991; The CAST Investigators, 1989; DIAMOND studies, 1997; Torp-Pedersen, 1999; Kober, 2008). A good therapeutic alternative to reduce risk of ICD shocks is catheter ablation of ventricular tachycardias.

3. Catheter ablation

In 1987, catheter ablation of ventricular tachycardia was a newly emerging field. The primary therapy for drug refractory ventricular tachycardia was surgical ablation, which was successful in controlling this arrhythmia in 80% to 90% of selected patients, but yielded an operative mortality of 5% to 15% (Cox, 1989). Over the subsequent two decades, significant developments in ablation and mapping technology contributed to improved outcomes: catheter ablation, first, using direct-current energy and radiofrequency current, later. The initial acute success rates using radiofrequency current were on average 75%, with a recurrence rate of 21% over a follow-up time average of 21 months (Gu`rsoy, 1993; Stevenson, 1993; Gonska, 1994; Kim, 1994; Wilber, 1995; Stevenson, 1998). The limitation of catheter ablation at this time was 2-fold. First, only conventional radiofrequency current (non-irrigated) was available; secondly, only patients with hemodynamically tolerated and

3.1 Electroanatomic systems and substrate mapping

Today, most patients with recurrent ventricular tachycardia have an ICD that promptly terminates ventricular tachycardia, so its hemodynamic impact and ECG morphology are often unknown. Thus, substrate mapping is often the only method to perform catheter ablation in patients with an ICD (Kuck, 2009). By selecting catheter ablation for an individual patient, risks and benefits that are determined by patient characteristics, as well

as the availability of appropriate facilities with technical expertise should be considered. In the past, catheter ablation of ventricular tachycardia has often been considered a procedure of last resort; now, a recent consensus document has suggested that catheter ablation should generally be considered early in the treatment of patients with recurrent ventricular tachycardia, recognizing that ventricular tachycardia was based mostly upon uncontrolled cohort studies and single-center reports. In the setting of high-risk patients with ICDs, catheter ablation of ventricular tachycardia has been proven to decrease the number of shocks.

3.1.1 Catheter ablation in ischemic patients

In most studies, catheter ablation has been performed in patients with ischemic heart disease after multiple ICD interventions, including patients with incessant ventricular tachycardia. In almost all of these studies, patients were included after failure of 1 or multiple antiarrhythmic drugs. The second largest prospective multicenter trials conducted in the United States using irrigated radiofrequency current included more than 350 patients with structural heart disease, predominantly coronary artery disease (Calkins, 2000; Stevenson, 2008). Both studies differ with respect to patient inclusion and to electrophysiological end-points, but the results were similar. In the cooled radiofrequency current trial, the acute success rate was 71% when the end-point was the elimination of all mappable ventricular tachycardias and 41% when the end-point was the elimination of ventricular tachycardia of any kind. In the thermocool trial, the acute success rate was 49% when elimination of all inducible ventricular tachycardia was used as the end-point. The Kaplan-Meier recurrence rate of sustained ventricular arrhythmia was 56% during 1 year of follow-up. The thermocool trial limited the follow-up time to 6 months for the efficacy end-point. Independence from ventricular tachycardia was 53%. In the thermocool trial, the frequency of ventricular tachycardia was reduced by $\geq 75\%$ in 67% of patients. An increase in the number of ventricular tachycardia episodes was observed in 20% of patients. Patients with ventricular tachycardia recurrences were older, had more heart failure, more atrial fibrillation, multiple myocardial infarction sites, and more inducible ventricular tachycardias; they received more radiofrequency lesions, and more often, had a ventricular tachycardia inducible after ablation compared with patients without ventricular tachycardia recurrences. In the cooled radiofrequency current study, a $\geq 75\%$ reduction in the ventricular tachycardia frequency in the two months after ablation compared to the two months before ablation was observed in 99 of 122 patients (81%), of whom 115 had an ICD. Only the absence of an inducible ventricular tachycardia, recognized as the clinical ventricular tachycardia, was a predictor of clinical success. Another European multicenter study (Euro-VT study) performed catheter ablation using external irrigation in 63 patients with recurrent scar-related ventricular tachycardia (Tanner, 2009). Catheter ablation was acutely successful in 51 patients (81%). During a mean follow-up of 12 ± 3 months, 31 patients (49%, 19 of 51 initially successfully ablated patients and 12 of 12 unsuccessfully ablated patients) experienced ventricular tachycardia recurrence. However, even among the patients with recurrence, the number of ICD therapies was significantly reduced in 79% of the cases. One limitation of catheter ablation studies in ICD patients must be addressed. In almost all studies, antiarrhythmic drugs were not systematically withdrawn after ablation. Therefore, any beneficial effect of catheter ablation in these studies may be influenced by drug therapy, even when most patients were drug failures before ventricular tachycardia ablation. While the above-mentioned and previously conducted studies clearly showed the beneficial effect

of catheter ablation of ventricular tachycardia with respect to ventricular tachycardia recurrence, the periprocedural mortality should also be considered in these patients. Indeed, the effectiveness of catheter ablation in ICD patients must be balanced with the safety profile of this interventional procedure. The reported procedure-related mortality ranges from 0% to 3.5%. In addition, major complications including stroke, myocardial infarction, tamponade, valve injury, and atrio-ventricular block occurred in 8-10% of the patients. In the Euro-VT study, the rate of major complications was only 1.6% and the 1-year mortality in these studies reached 8-18%.

3.1.2 Catheter ablation in nonischemic patients

Data on catheter ablation in ICD patients with nonischemic ventricular tachycardia from large multicenter trials are lacking. The anatomic substrate is different in patients with nonischemic ventricular tachycardia, since more extensive scar is often present in the epicardium and not in the endocardium, compared with the majority of patients with a previous myocardial infarct. In both groups, epicardial ablation has been successfully applied after failure of endocardial ablation. In general, acute success rates of catheter ablation are similar to ischemic ventricular tachycardia patients, but recurrence rates seem to be higher (Soejima, 2004; Delacretaz, 2000; Nazarian, 2005; Verma, 2005; Dalal, 2007). Moreover, catheter ablation has been shown to eliminate electrical storm in patients with and without underlying heart disease by either inhibiting the trigger factors for ventricular tachycardia/ventricular fibrillation, namely ventricular premature beats, or by modifying the substrate for ventricular tachycardia/ventricular fibrillation. Catheter ablation significantly reduces the number of ICD interventions in patients with electrical storm (Della Bella, 2004). In a recent single-center study, 95 patients with electrical storm, leading to a mean number of 14 ICD shocks per patient per day, underwent catheter ablation. Seventy-two patients had underlying coronary artery disease, 10 patients had dilated cardiomyopathy, and 13 patients had right ventricular disease. After catheter ablation, electrical storm was acutely suppressed in all patients and did not recur during follow-up of 22 months in patients in whom either no ventricular tachycardia could be induced or clinical ventricular tachycardia became noninducible. Furthermore, death from any cause could significantly be reduced in both groups compared with patients in whom the clinical ventricular tachycardia remained inducible and electrical storm recurred. Both cardiac death as well as sudden cardiac death was significantly higher in patients with electrical storm recurrences (50% versus 0%). This observation indicates that a successful ventricular tachycardia ablation procedure may be associated with a reduction of total mortality in subgroups of patients. The procedure typically is prompted by frequent defibrillator therapies despite multiple combinations of antiarrhythmic drugs. Use of catheter ablation earlier during the clinical course of ventricular tachycardia, soon after its onset, may be beneficial.

3.1.3 Prophylactic catheter ablation

The role of prophylactic radiofrequency catheter ablation of arrhythmogenic substrate in patients with a previous myocardial infarction in preventing ICD therapy was evaluated in the Substrate Mapping and Ablation in Sinus Rhythm to Halt Ventricular Tachycardia (SMASH-VT) trial and in the Catheter ablation of stable ventricular tachycardia before defibrillator implantation in patients with coronary heart disease (VTACH) trial (Reddy,

2007; Kuck, 2010). SMASH-VT was a prospective randomized three-center trial of catheter ablation versus no intervention for patients with implantation of a secondary prophylactic ICD within the prior 6 months or who had received recent appropriate ICD therapy. Catheter ablation resulted in reduced appropriate ICD therapy from 33 to 12% (hazard ratio 0.35). Secondary end-points included a reduction in ventricular tachycardia storm, but no effect on total mortality occurred. Although this landmark study demonstrated proof of the principle that catheter ablation can have a favorable effect, limitations such as the lack of adjudicator blinding, stratification and standard ICD programming make the results more difficult to interpret. Most importantly, the role of antiarrhythmic drugs was not addressed by this study design, limiting direct applicability of the results to clinical practice (El-Damaty, & Sapp, 2011). VTACH trial was similar in design to that of SMASH-VT. One hundred and ten patients presenting with ventricular tachycardia and prior myocardial infarction were randomly allocated to catheter ablation or no intervention, followed by ICD implantation. Antiarrhythmic drug use was discouraged, and not significantly different between groups. Patients were stratified by center and ejection fraction (cut-off 30%); a blinded committee adjudicated outcomes and ICD programming was standardized. The VTACH trial showed that catheter ablation, performed before ICD implantation in patients after the first episode of a hemodynamically stable ventricular tachycardia, significantly prolonged the median time to first ventricular tachycardia/ventricular fibrillation from 5.9 months to 18.6 months. The benefit was more pronounced in patients with left ventricular ejection fraction > 30% (Figure 2).

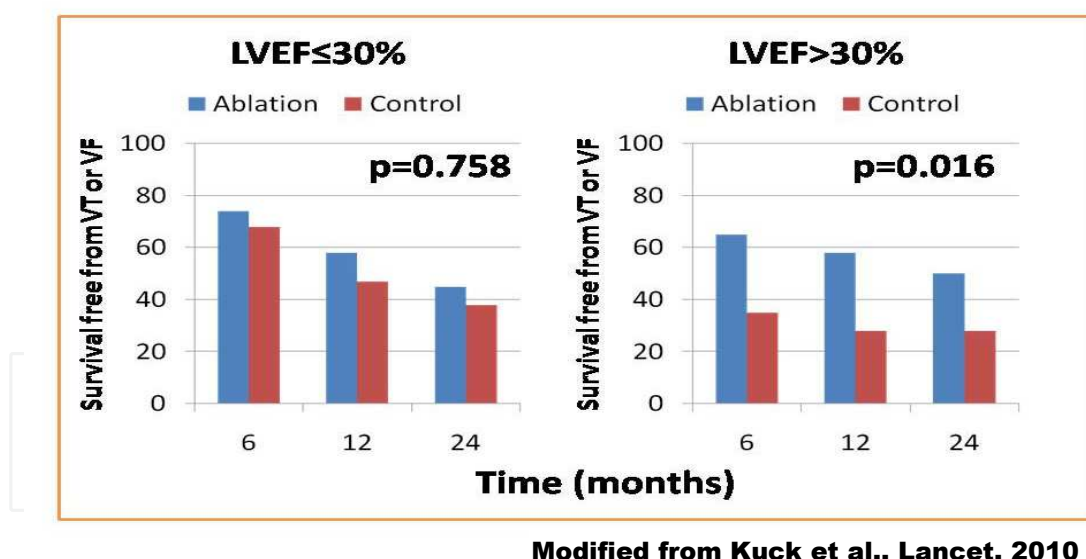


Fig. 2. Survival free from ventricular tachycardia (VT) or ventricular fibrillation (VF) in patients with left-ventricular ejection fraction (LVEF) less or equal than 30% and left-ventricular ejection fraction greater than 30%.

Furthermore, catheter ablation reduced the overall incidence of appropriate ICD interventions by 28% and the incidence of ICD shocks by 43%. Even more importantly, catheter ablation reduced the median number of appropriate ICD interventions per patient and year of follow-up by 93%. In addition, catheter ablation significantly reduced the rate of hospitalizations for cardiac reasons. This well designed trial provides further support for the

effectiveness of catheter ablation in reducing ventricular tachycardia events, but does not give clinical guidance on the relative role of catheter ablation in comparison to antiarrhythmic drug therapy. The complication rate becomes even more important if an interventional procedure is performed prophylactically. In both trials, the incidence of ablation related death was 0% and of major complications 4.7% and 3.8%, respectively. The event rate in the control group of the VTACH trial was roughly twice as that observed in SMASH-VT, but the relative reduction in events was similar, at 35–40%.

3.2 Open questions in VT catheter ablation

3.2.1 The role of antiarrhythmic therapy

Many important questions remain. Should ablation be preferred over antiarrhythmic drugs? The largest prospective, randomized trial evaluating several drug regimen in patients with an ICD for secondary prevention showed that the combination of beta-blockers and amiodarone had the greatest effect, with a reduction of ICD shocks by 73% compared to the control group (beta-blocker alone) and of 57% compared to the sotalol group, with an incidence of ICD shocks in the control group of approximately 30% after 1 year (Connolly, SJ et al. 2006). In a previous trial, sotalol reduced the risk of death from any cause or the delivery of a first shock for any reason by 48%. Furthermore, sotalol reduced the probability of the delivery of an appropriate first ICD shock or a first shock of any reason (Pacifco, 1999). Sotalol also prevented the occurrence of shocks in response to supraventricular arrhythmias, a frequent cause of inappropriate defibrillator therapy. Despite these beneficial effects, drug efficacy depends on patient compliance. In particular, if a lifetime therapy is required and is associated with side effects, this may lead to a discontinuation of drugs therapy. Furthermore, antiarrhythmic drugs such as amiodarone may increase the defibrillation threshold (Hohnloser, 2006). Even if this may not play a significant role in the majority of patients with modern devices, it can be harmful in the individual patient. In a randomized clinical trial comparing cooled radiofrequency catheter ablation of ventricular tachycardia and drugs therapy, arrhythmic recurrences was significantly lower with cooled ablation than with drug therapy. (Epstein, 1998).

Regarding catheter ablation procedural outcomes, multiple small series, single center of catheter ablation for ventricular tachycardia have reported freedom from recurrent ventricular tachycardia in 50-80% of patients over follow-up, which ranges from 6 to 18 months. Long-term results are sparse, and completeness of reported follow-ups is sometimes suboptimal. Patients remained on antiarrhythmic drugs (amiodarone 94% and sotalol 5%) postprocedure and those with persistently inducible clinical ventricular tachycardia had shorter time to death, and shorter time to ventricular tachycardia recurrence and were the only patients with recurrence of ventricular tachycardia storm (Carbucicchio, 2008).

3.2.2 The role of ventricular function

In our experience, among the 66 patients referred to our clinic for radiofrequency catheter ablation of recurrent post infarction ventricular tachycardias, only 19 (29%) showed recurrences during a mean follow-up of 26 ± 12 months. This finding “per se” highlights the role of radiofrequency catheter ablation in the overall clinical management of recurrent post infarction ventricular tachycardias in patients with ICD. In addition, our findings stressed the role of poor left ventricular function as an independent predictor of recurrent ventricular tachycardia. Among patients with ejection fraction < 35%, 11 out of 25 (44%) still continued

to have ventricular tachycardia recurrences, independently of whether the ventricular tachycardia responsible for ICD therapies was inducible at the end of the procedure or not. Most clinical trials (Moss, 2004; Moss, 1996; Buxton, 1999; Bardy, 2005) testing the efficacy of antiarrhythmic versus ICD therapy have used the ejection fraction as the marker for advanced disease, with the qualifying criteria in the range of 30–40% or less. Interestingly, in the AVID trial (Domanski, 1999) a subgroup analysis suggested that there was no benefit of ICD therapy over amiodarone for patients with ejection fraction between 36% and 40%, being all the benefit accrued to those patients with ejection fraction 35% or less. This observation raises the critical question we addressed in conceiving this study, about predictors of ventricular tachycardia recurrences, and consequently about therapeutic options, for patients with ejection fraction greater than 35%. Our findings show that, among patients with ejection fraction >35% and <50%, no recurrent ventricular tachycardia was further detected in the patients in whom the ventricular tachycardia responsible for ICD therapies was not inducible at the end of the procedure (100% specificity). Whereas ventricular tachycardia recurrences continued only in the patients, in whom the clinical ventricular tachycardia was inducible (100% sensitivity) (Colella, 2009). Actually, inducibility of the clinical ventricular tachycardia, more than being a predictor of ventricular tachycardia recurrences, is simply the consequence of radiofrequency catheter ablation failure (Della Bella, 2002), i.e. of the fact that the clinical ventricular tachycardia has not been successfully ablated. Accordingly, at least in patients with ejection fraction >35% and <50%, the procedure should be repeated until an acutely successful ablation of the clinical ventricular tachycardia is achieved. For these patients, indeed, radiofrequency catheter ablation might be considered a reasonable alternative to ICD as the first choice. Finally, our findings show that in all the 24 patients with ejection fraction >50% no recurrent ventricular tachycardia was any longer detected during the follow-up. Based upon our findings, a simple algorithm (Figure 3) is proposed for the management of recurrent ventricular

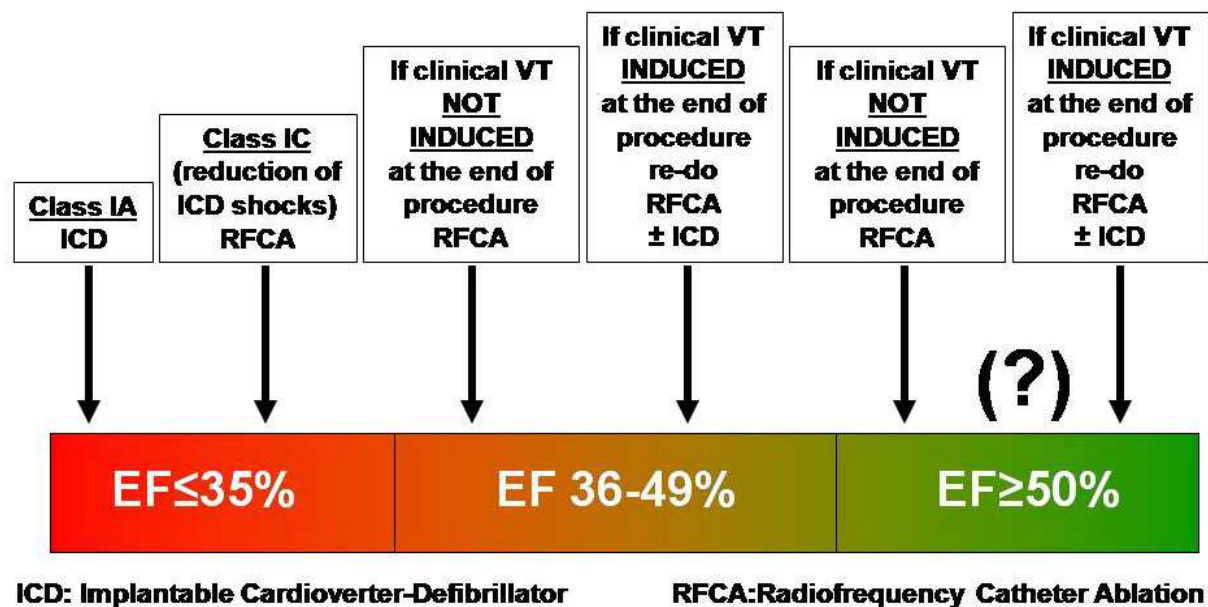


Fig. 3. Algorithm for the management of recurrent Ventricular Tachycardias in patients with previous Myocardial Infarction.

tachycardias in patients with previous myocardial infarction: a) for patients with ejection fraction $\leq 35\%$, ICD still remains the first choice (class 1A). However, radiofrequency catheter ablation is indicated to reduce ICD shocks (class 1C) (Zipes, 2006), b) for patients with ejection fraction $>35\%$ and $<50\%$, the first choice might be radiofrequency catheter ablation and any effort should be made to successfully ablate the VT, repeating the procedure if needed. The implantation of ICD might be limited to those patients in whom the ventricular tachycardia is not successfully ablated. c) For patients with EF $\geq 50\%$, the first choice might be radiofrequency catheter ablation.

4. Conclusions

In conclusion, the published studies have shown the important role of catheter ablation in patients with structural heart disease and ICD implantation who experienced appropriate ICD therapy due to recurrent ventricular tachycardias. Successful catheter ablation in these patients prevents or reduces the number of ventricular tachycardia recurrences as well as the rate of ICD shocks, improving the quality of life and probably long-term mortality.

Finally, the question whether ablation can replace ICD in patients with structural heart disease is presented. The results of recently published studies are promising for further expansion of ventricular tachycardia ablation indication, but several points merit additional consideration. Catheter ablation of ventricular tachycardia is still an extremely complex procedure and the reported results reflect the outcome of such ablations from highly experienced and high-volume centers and, therefore, cannot be extrapolated to all electrophysiology departments without additional simplification and standardization of the ablation procedures and strategies. In spite of being able to achieve acute complete success in the majority of patients who underwent catheter ablation of ventricular tachycardia, accurate long-term prediction of outcome based on current risk predictors is difficult. Therefore, we cannot currently replace ICD with catheter ablation, although in selected patients, with hemodynamically stable and/or slow ventricular tachycardia and preserved or mildly reduced left ventricular function (for which data from randomized studies are lacking), catheter ablation might be considered an alternative to ICD. In addition, even upon developing more effective ablation strategies and finding good predictors of long-term outcome after a single center ablation procedure, the substrate of arrhythmia in patients with structural heart disease is dynamic. Due to this inherently dynamic characteristics of the arrhythmic substrate, cardioverter defibrillator implantation, cannot be replaced in the long-term, with catheter ablation of ventricular tachycardia. It is in fact necessary to stratify the risk repetitively and regularly, in order to perform repeated ablation procedures, if necessary. Thus, before widespread recommendation of catheter ablation of ventricular tachycardia becomes evident, especially prophylactic ablation, standardizing the ablation procedure and strategies, endpoints, and the follow-up should be performed. Further studies are necessary to clarify the role of catheter ablation of ventricular tachycardia on long-term mortality of patients with structural heart disease (Arya, 2009). ICD remains a life-saving device for patients with sustained ventricular tachycardia late after myocardial infarction; but in selected patients, especially in patients with ejection fraction $> 30\%$, who are receiving an ICD for stable ventricular tachycardia, arrhythmic substrate ablation can be considered early. Evidence of a positive effect on survival, subsequent hospital admissions, or quality of life is needed before catheter ablation can be recommended for routine use. We believe that today's trial is further evidence to support early use of catheter ablation, as a

valid alternative to antiarrhythmic drug therapy, for symptomatic recurrent ventricular tachycardia after ICD implantation, provided that expertise to safely perform the procedure is available (Stevenson, 2010).

5. References

- Ahmad, M; Bloomstein, L; Roelke, M; Bernstein, AD; Parsonnet, V. Patients' attitudes toward implanted defibrillator shocks. *Pacing Clin Electrophysiol*, Vol. 23, (2000), pp. 934-8, ISSN 1540-8159
- Aliot, EM; Stevenson, WG; Almendral-Garrote, JM EHRA/HRS Expert Consensus on Catheter Ablation of Ventricular arrhythmias. *Europace*, Vol. 11:, (2009), pp 771-817, ISSN 1099-5129.
- Al-Khatib, SM; LaPointe, NM; Curtis, LH; Kramer, JM; Swann, J; Honig, P; Califf, RM. Outpatient prescribing of antiarrhythmic drugs from 1995 to 2000. *Am J Cardiol*, Vol. 91, (2003), pp 91-94, ISSN 1076-7460
- Al-Khatib, SM; Hellkamp, A; Curtis, J; Mark, D; Peterson, E; Sanders, GD; Heidrenreich, PA; Hernandez, AF; Curtis, LH; Hammill, S. Non-Evidence-Based ICD Implantation in the United States. *JAMA*, Vol. 305, (2011), pp 43-49, ISSN 1538-3598
- Anderson, KP. Sudden Cardiac Death Unresponsive to Implantable Defibrillator Therapy: An Urgent Target for Clinicians, Industry and Government. *Journal of Interventional Cardiac Electrophysiology*, Vol. 14, (2005), pp 71-78, ISSN 1532-2092
- Arya, A; Haghjoo, M; Dehghani, MR. Prevalence and predictors of electrical storm in patients with implantable cardioverter-defibrillator. *Am J Cardiol*, Vol. 97, (2006), pp 389-392, ISSN 1076-7460
- Arya, A; Piorkowski, C; Kircher, S; Sommer, P; Bollmann, A; Gaspar, T; Hindricks, G. Results of recent Studies in Catheter Ablation of Ventricular tachycardias. In Whom to Abandon the ICD? *Herz*, Vol. 34, (2009), pp 539-544.
- AVID Investigators. The Antiarrhythmics versus Implantable Defibrillators Investigators. A comparison of antiarrhythmic-drug therapy with implantable defibrillators in patients resuscitated from near-fatal ventricular arrhythmias. *N Engl J Med*, Vol. 337, (1997), pp. 1576-1583, ISSN 1533-4406
- Avitall, B; Port, S; Gal, R. Automatic implantable cardioverter/ defibrillator discharges and acute myocardial injury. *Circulation*, Vol. 81, (1990), pp 1482-1487, ISSN 1524-4539
- Babbs, CF; Tacker, WA; Van Vleet, JF; Bourland, JD; Geddes, LA. Therapeutic indices for transthoracic defibrillator shocks: effective, damaging, and lethal electrical doses. *Am Heart J*, Vol. 99, (1980), pp 734-8, ISSN 1097-6744
- Bardy, GH; Lee, KL; Mark, DB et al., Sudden Cardiac Death in Heart Failure Trial (SCD-HeFT) Investigators. Amiodarone or an implantable cardioverter-defibrillator for congestive heart failure. *N Engl J Med*, Vol. 352, (2005), 225-37, ISSN 1533-4406
- Bardy, GH; Lee, KL; Mark, DB; et al. HAT Investigators. Home use of automated external defibrillators for sudden cardiac arrest. *N Engl J Med*, Vol. 358, (2008), pp 1793-1804 ISSN 1533-4406
- Bogun, F; Kim, HM; Han, J; et al. Comparison of mapping criteria for hemodynamically tolerated, postinfarction ventricular tachycardia. *Heart Rhythm* Vol. 3, (2006), pp 20-26 ISSN 1547-5271

- Bokhari, F; Newman, D; Greene, M et al. Long-term comparison of the implantable cardioverter defibrillator versus amiodarone: eleven-year followup of a subset of patients in the Canadian Implantable Defibrillator Study (CIDS). *Circulation* Vol. 110, (2004), pp 112-116, ISSN 1524-4539
- Bostwick, JM & Sola, CL. An updated review of implantable cardioverter/defibrillators, induced anxiety, and quality of life. *Psychiatr Clin North Am.* Vol. 30, (2007), pp 677-688, ISSN 0193-953X
- Brendorp, B; Pedersen, O; Torp-Pedersen, C et al. A benefit-risk assessment of class III antiarrhythmic agents. *Drug Saf* Vol. 25, (2002), pp 847-865, ISSN 0114-5916
- Buxton, AE; Lee, KL; Fisher, JD; et al. A randomized study of the prevention of sudden death in patients with coronary artery disease. *N Eng J Med*, Vol. 341, (1999), pp1882-1890, ISSN 1533-4406
- Calkins, H; Epstein, A; Packer, et al. Catheter ablation of ventricular tachycardia in patients with structural heart disease using cooled radiofrequency energy: results of a prospective multicenter study. *JACC*, Vol. 35, (2000), pp 1905-1914, ISSN 1558-3597
- Camm, AJ; Pratt, CM; Schwartz, PJ. Mortality in patients after a recent myocardial infarction: a randomized, placebo-controlled trial of azimilide using heart rate variability for risk stratification. *Circulation*, Vol. 109, (2004), pp 990-996, ISSN 1524-4539
- Carbucicchio, C; Santamaria, M; Trevisi, N et al. Catheter ablation for the treatment of electrical storm in patients with implantable cardioverter-defibrillators. Short- and long-term outcomes in a prospective single-center study. *Circulation* , Vol. 117, (2008), pp 462-469, ISSN 1524-4539.
- Cardiac Arrhythmia Suppression Trial (CAST) Investigators. Preliminary report: effect of encainide and flecainide on mortality in a randomized trial of arrhythmia suppression after myocardial infarction. *N Engl J Med*, Vol. 321, (1989), pp 406-412, ISSN 1533-4406
- Centers for Disease Control and Prevention (CDC). State-Specific Mortality from Sudden Cardiac Death-United States,1999. *Morb Mortal Wkly Rep (MMWR)*, Vol. 51, (2002), pp 123-126, ISSN 1581-861X
- Colella, A; Giaccardi, M; Molino Lova, R; et al. Ventricular tachycardia inducibility after radiofrequency ablation affects the outcomes in patients with coronary artery disease and implantable cardioverter-defibrillators: The role of left ventricular function, *J Interv Card Electrophysiol*, Vol. 25,(2009), pp229-234, ISSN 1572-8595
- Connolly, SJ; Dorian, P; Roberts, RS; et al. Optimal Pharmacological Therapy in Cardioverter Defibrillator Patients (OPTIC) Investigators. Comparison of B-blockers, amiodarone plus beta-blockers, or sotalol for prevention of shocks from implantable cardioverter defibrillators: the OPTIC study: a randomized trial. *JAMA*, Vol. 295, (2006), pp 165-171, ISSN 1538-3598
- Connolly, SJ; Gent, M; Roberts, RS et al. Canadian implantable defibrillator study (CIDS): a randomized trial of the implantable cardioverter defibrillator against amiodarone. *Circulation*, Vol. 101, (2000), pp 1297-1302, ISSN 1524-4539
- Cox, JL. Patient selection criteria and results of surgery for refractory ischemic ventricular tachycardia. *Circulation*, Vol. 79, (1989), pp I163-I177, ISSN 1524-4539

- Credner, SC; Klingenheben, T; Mauss, O et al. Electrical storm in patients with transvenous implantable cardioverter-defibrillators: incidence, management and prognostic implications. *JACC*, Vol. 32, (1998), pp 1909–1915, ISSN 1558-3597
- Dalal, D; Jain, R; Tandri, H; et al. Long-term efficacy of catheter ablation of ventricular tachycardia in patients with arrhythmogenic right ventricular dysplasia/cardiomyopathy. *JACC*, Vol. 50, (2007), pp 432– 440, ISSN 1558-3597
- Daubert, JP; Zareba, W; Cannom, DS et al., for the MADIT II Investigators. Inappropriate implantable cardioverter-defibrillators shocks in the MADIT II study: frequency, mechanisms, predictors, and survival impact. *JACC*, Vol. 51, (2008), pp1357– 65, ISSN 1558-3597
- de Chillou, C; Lacroix, D; Klug, D; et al. Isthmus characteristics of reentrant ventricular tachycardia after myocardial infarction. *Circulation*, Vol. 105, (2002), pp726–731., ISSN 1524-4539
- de Vreede-Swagemakers, JJ; Gorgels, AP; Dubois-Arbouw, WI; et al. Out-of-hospital cardiac arrest in the 1990s: a population-based study in the Maastricht area on incidence, characteristics and survival. *JACC*, Vol. 30, (1997), pp1500–1505, ISSN 1558-3597
- Delacretaz, E; Stevenson, WG; Ellison, KE; et al. Mapping and radiofrequency catheter ablation of the three types of sustained monomorphic ventricular tachycardia in nonischemic heart disease. *J Cardiovasc Electrophysiol*, Vol. 11, (2000), pp11–17, ISSN 1532-2092
- Della Bella, P; Riva, S; Fassini, G; et al. Incidence and significance of pleomorphism in patients with postmyocardial infarction ventricular tachycardia: acute and long-term outcome of radiofrequency catheter ablation. *Eur Heart J*, Vol. 25, (2004), pp1127–1138, ISSN 1522-9645
- Della Bella, P; De Ponti, R; Uriarte, JA; et al. Catheter ablation and antiarrhythmic drugs for haemodynamically tolerated post-infarction ventricular tachycardia. Long-term outcome in relation to acute electrophysiological findings. *Eur Heart J*, Vol. 23, (2002), pp 414–424, ISSN 1522-9645
- DIAMOND. Dofetilide in patients with left ventricular dysfunction and either heart failure or acute myocardial infarction: rationale, design, and patient characteristics of the DIAMOND studies. Danish Investigations of Arrhythmia and Mortality ON Dofetilide. *Clin Cardiol* Vol. 20, (1997), pp 704–710, ISSN 0160-9289
- Dimarco, JP. Implantable cardioverter-defibrillators. *N Engl J Med*, Vol. 349, (2003), pp1836 – 1847, ISSN 1533-4406
- Dofetilide in patients with left ventricular dysfunction and either heart failure or acute myocardial infarction: rationale, design, and patient characteristics of the DIAMOND studies. Danish Investigations of Arrhythmia and Mortality ON Dofetilide. *Clin Cardiol* Vol. 20, (1997), pp 704–710, ISSN 0160-9289
- Domanski, MJ; Saksena, S; Epstein, AE; et al. Relative effectiveness of the implantable cardioverter-defibrillator and antiarrhythmic drugs in patients with varying degrees of left ventricular dysfunction who have survived malignant ventricular arrhythmia. AVID investigators. Antiarrhythmic Versus implantable Defibrillators. *JACC*, Vol. 34, (1999), pp 1090–1095, ISSN 1558-3597

- Dorian, P; Borggreffe, M; Al-Khalidi, HR et al. Placebo-controlled, randomized clinical trial of azimilide for prevention of ventricular tachyarrhythmias in patients with an implantable cardioverter defibrillator. *Circulation* , Vol. 110, (2004), pp 3646–3654. ISSN 1524-4539
- Dorian, P; Philippon, F, Thibault, B; et al. Randomized controlled study of detection enhancements versus rate-only detection to prevent inappropriate therapy in a dual-chamber implantable cardioverter-defibrillator. *Heart Rhythm*, Vol. 1, (2004), pp540 –547, ISSN 1547-5271
- Dougherty, CM; Shaver, JF. Psychophysiological responses after sudden cardiac arrest during hospitalization. *Appl Nurs Res*, Vol. 8, (1995), pp160–8, ISSN 1532-8201
- Dunbar, SB; Warner, CD; Purcell, JA. Internal cardioverter defibrillator device discharge: experiences of patients and family members. *Heart Lung*, Vol. 22, (1993), pp 494 – 501, ISSN 1547-5271
- Dunbar, SB; Kimble, LP; Jenkins, LS et al. Association of mood disturbance and arrhythmia events in patients after cardioverter defibrillator implantation. *Depress Anxiety*, Vol. 9, (1999), pp163– 8, 1520-6394, ISSN 1520-6394
- Echt, DS; Liebson, PR; Mitchell, LB et al. Mortality and morbidity in patients receiving encainide, flecainide, or placebo. The Cardiac Arrhythmia Suppression Trial. *N Engl J Med*, Vol. 324, (1991), pp781–788, 1533-4406, ISSN 1533-4406
- El-Damaty, A & Sapp JL. The role of catheter ablation for ventricular tachycardia in patients with ischemic heart disease. *Current Opinion in Cardiology*, Vol. 26, (2011), pp30-39, ISSN 0268-4705
- Epstein, AE; Wilber, DJ; Wharton, JM; et al. Randomized Controlled Trial of Ventricular tachycardia Treatment by Cooled tip Catheter Ablation vs Drug Therapy. *JACC*, Vol. 1998 Abstract 1046-167, pp 118A, ISSN 1558-3597
- Epstein, AE; Di Marco, JP; Ellenbogen, KA; et al. ACC/AHA/HRS 2008 Guidelines for Device-Based Therapy of Cardiac Rhythm Abnormalities: a report of the American College of Cardiology/American Heart Association Task Force on Practice Guidelines (Writing Committee to Revise the ACC/AHA/NASPE 2002 Guideline Update for Implantation of Cardiac Pacemakers and Antiarrhythmia Devices): developed in collaboration with the American Association for Thoracic Surgery and Society of Thoracic Surgeons. *Circulation*, Vol. 117, (2008), pp e350–e408, ISSN 1524-4539
- Exner, DV; Pinski, SL; Wyse, DG et al. Electrical storm presages non sudden death: the Antiarrhythmics Versus Implantable Defibrillators (AVID) trial. *Circulation*, Vol.103, (2001), pp 2066 –71, ISSN 1524-4539
- Fricchione, GL; Olson, LC; Vlay, SC. Psychiatric syndromes in patients with the automatic internal cardioverter defibrillator: anxiety, psychological dependence, abuse, and withdrawal. *Am Heart J*, Vol. 117, (1998), pp1411–4, ISSN 1097-6744
- Gonska, BD; Cao, K; Schaumann, A; et al. Catheter ablation of ventricular tachycardia in 136 patients with coronary artery disease: results and long-term follow-up. *JACC*, Vol. 24, (1994), pp1506 –1514, ISSN 1558-3597

- Gu'rs soy, S; Chiladakis, I; Kuck, KH. First lessons from radiofrequency catheter ablation in patients with ventricular tachycardia. *PACE* Vol. 16, (1993), pp687- 691, ISSN 1540-8159
- Hallas, CN; Burke, LJ; White, DG; Connelly, DT. A Prospective 1-Year Study of Changes in Neuropsychological Functioning After Implantable Cardioverter-Defibrillator Surgery. *Circ Arrhythm Electrophysiol* , Vol 3, (2010), pp170-177, ISSN 1941-3149
- Hine, LK; Gross, TP; Kennedy, DL. Outpatient antiarrhythmic drug use from 1970 through 1986. *Arch Intern Med.*, Vol. 149, (1989), pp1524 -1527, ISSN 1536-3679
- Hohnloser, SH; Dorian, P; Roberts, R; et al. Effect of amiodarone and sotalol on ventricular defibrillation threshold: the optimal pharmacological therapy in cardioverter defibrillator patients (OPTIC) trial. *Circulation*, Vol. 114, (2006), pp 104-109, ISSN 1524-4539
- Johannes, B; van Rees, JB; Borleffs, CJW; et al. Inappropriate implantable cardioverter-defibrillator shocks incidence, predictors, and impact on mortality. *JACC*, Vol. 57, (2011), pp 556-562, ISSN 1558-3597
- Jones, JL; Paull, WK; Lepeschkin, E; Jones, RE. Ultrastructural injury to chick myocardial cells in vitro following electric countershock. *Circ Res* Vol. 46, (1980), pp 387-94, ISSN 1524-2092
- Kadish, A & Goldberger, J. Selecting Patients for ICD implantation. Are Clinicians Choosing Appropriately? *JAMA*, Vol. 305, (2011), pp 91-92, ISSN 1538-3598
- Khalighi, MD; Daly, MD; Leino, PEV; et al. Clinical predictors of transvenous defibrillation energy requirements. *Am J Cardiol*, Vol. 79, (1997), pp150-153, ISSN 0002-9149
- Kim, YH; Sosa-Suarez, G; Trouton, TG; et al. Treatment of ventricular tachycardia by transcatheter radiofrequency ablation in patients with ischemic heart disease. *Circulation*, Vol. 89, (1994), pp1094 -1102, ISSN 1524-4539
- Kober, L; Torp-Pedersen, C; McMurray, JJ. Increased mortality after dronedarone therapy for severe heart failure. *N Engl J Med*, Vol. 358, (2008), pp 2678-2687, ISSN 1533-4406
- Kuck, KH; Should Catheter Ablation be the Preferred Therapy for Reducing ICD Shocks? Ventricular Tachycardia in Patients With an Implantable Defibrillator Warrants Catheter Ablation. *Circ Arrhythm Electrophysiol*, Vol. 2, (2009), pp713-720, ISSN 1941-3149
- Kuck, KH; Schaumann, A; Eckardt, L et al, for the VTACH study group. Catheter ablation of stable ventricular tachycardia before defibrillator implantation in patients with coronary heart disease (VTACH): a multicentre randomised controlled trial. *Lancet*, Vol. 375, (2010), pp31-4, ISSN 1470-2045
- Luderitz, B; Jung, W; Deister, A; et al. Patient acceptance of implantable cardioverter defibrillator devices: changing attitudes. *Am Heart J*, Vol. 127, (1994), pp 1179-84, ISSN 1097-6744
- Marchlinski FE, Callans DJ, Gottlieb CD, Zado E. Linear ablation lesions for control of unmappable ventricular tachycardia in patients with ischemic and nonischemic cardiomyopathy. *Circulation*, Vol. 101, (2000), pp1288-1296, ISSN 1524-4539
- Mason, JW. A comparison of electrophysiologic testing with Holter monitoring to predict antiarrhythmic-drug efficacy for ventricular tachyarrhythmias. *Electrophysiologic*

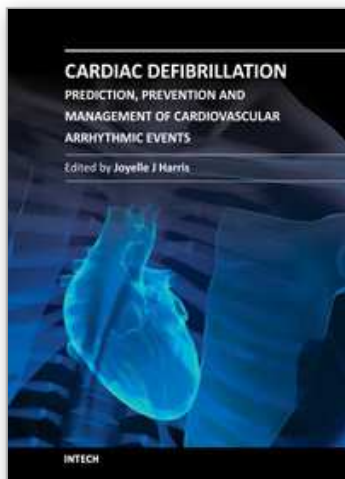
- Study versus Electrocardiographic Monitoring Investigators. *N Engl J Med*, Vol. 9, (1993), pp 445–451, ISSN 1533-4406
- Mirowski, M; Reid, PR; Mower, MM; et al. Termination of malignant ventricular arrhythmias with an implanted automatic defibrillator in human beings. *N Engl J Med*, Vol. 303, (1980), pp 322–324, ISSN 1533-4406
- Mitchell, LB; Pineda, EA; Titus, JL; Bartosch, PM; Benditt, DG. Sudden Death in Patients With Implantable Cardioverter Defibrillators. The Importance of Post-Shock Electromechanical Dissociation. *JACC*, Vol. 39, (2002), pp 1323–1328, ISSN 1558-3597
- Morady, F; Harvey, M; Kalbfleisch, SJ; el-Atassi, R; Calkins, H; Langberg, JJ. Radiofrequency catheter ablation of ventricular tachycardia in patients with coronary artery disease. *Circulation*, Vol. 87 (1993), pp 363–372, ISSN 1524-4539.
- Moss, AJ; Greenberg, H; Case, RB; Zareba, W; Hall, WJ; Brown, MW et al. Multicenter Automatic Defibrillator Implantation Trial-II Research Group. Long-term clinical course of patients after termination of ventricular tachyarrhythmia by an implanted defibrillator. *Circulation*, Vol. 110, (2004), pp 3760–3765, ISSN 1524-4539.
- Moss, AJ., Hall, W. J., Cannom, D. S., Daubert, J. P., Higgins, S. L., Klein, H., et al. Improved survival with an implanted defibrillator in patients with coronary disease at high risk for ventricular arrhythmia. *N Engl J Med*, Vol. 335,1, (1996), pp 933–1940, ISSN 1533-4406
- Myerburg, RJ. Sudden cardiac death: exploring the limits of our knowledge. *J Cardiovasc Electrophysiol.*, Vol. 12, (2001), pp 369–381, ISSN 1532-2092
- Nanthakumar, K; Paquette, M; Newman, D; Deno, DC; Malden, L; Gunderson, B; Gilkerson, J; Greene, M; Heng, D; Dorian P. Inappropriate therapy from atrial fibrillation and sinus tachycardia in automated implantable cardioverter defibrillators. *Am Heart J*, Vol. 139, (2000), 797–803, ISSN 1097-6744
- Nazarian, S; Bluemke, DA; Lardo, AC; Zviman, MM; Watkins, SP; Dickfeld, TL; Meininger, GR; Roguin, A; Calkins, H; Tomaselli, GF; Weiss, RG; Berger, RD; Lima, JA; Halperin, HR. Magnetic resonance assessment of the substrate for inducible ventricular tachycardia in nonischemic cardiomyopathy. *Circulation*, Vol. 112, (2005), pp 2821–2825, ISSN 1524-4539
- Pacifico, A; Hohnloser, SH; Williams, JH et al. Prevention of implantable defibrillator shocks by treatment with sotalol. d,l-Sotalol Implantable Cardioverter-Defibrillator Study Group. *N Engl J Med*, Vol. 340, (1999), pp 1855–1862, ISSN 1533-4406
- Pratt, CM; Al-Khalidi, HR; Brum, JM et al. Cumulative experience of azimilide associated torsades de pointes ventricular tachycardia in the 19 clinical studies comprising the azimilide database. *JACC*, Vol. 48, (2006), pp 471–477, ISSN 1558-3597
- Raitt MH. Implantable Cardioverter-Defibrillator Shocks: A double-Edged Sword? *JACC*, Vol. 51, (2008), 1366–1368, ISSN 1558-3597
- Raymond, JM; Sacher, F; Winslow, R; Tedrow, U; Stevenson, WG. Catheter ablation for scar related ventricular tachycardias. *Curr Probl Cardiol*, Vol. 34, (2009), pp 225–70, ISSN 0146-2806
- Reddy, VY; Neuzil, P; Taborsky, M; Ruskin, JN. Short-term results of substrate mapping and radiofrequency ablation of ischemic ventricular tachycardia using a saline-irrigated catheter. *JACC*, Vol. 41, (2003), pp 2228–2236, ISSN 1558-3597

- Reddy, VY; Reynolds, MR; Neuzil, P et al. Prophylactic catheter ablation for the prevention of defibrillator therapy. *N Engl J Med*, Vol. 357, (2007), pp 2657–65, ISSN 1533-4406
- Reiffel, JA. Drug and drug-device therapy in heart failure patients in the post-COMET and SCD-HeFT era. *J Cardiovasc Pharmacol Ther*. Vol. 10, (Suppl 1), (2005), pp S45–S58, ISSN 1940-4034
- Rosenqvist, M; Beyer, T; Block, M; Minten, J; Lindemans, F. Adverse events with transvenous implantable cardioverter-defibrillators: a prospective multicenter study: European 7219 Jewel ICD Investigators. *Circulation*, Vol. 98(1998), pp 663–670, ISSN 1524-4539
- Santangeli, P; Di Biase, L; Dello Russo, A; Casella, M; Bartoletti, S; Santarelli, P; Pelargonio, G; Natale, A. Meta-Analysis: Age and Effectiveness of Prophylactic Implantable Cardioverter-Defibrillator. *Ann Intern Med*, Vol. 153, (2010), pp 592-599, ISSN 1539-3704
- Soejima, K; Stevenson, WG; Sapp, JL; Selwyn, AP; Couper, G; Epstein, LM. Endocardial and epicardial radiofrequency ablation of ventricular tachycardia associated with dilated cardiomyopathy: the importance of low-voltage scars. *JACC*, Vol. 43, (2004), pp1834–1842, ISSN 1558-3597
- Steinbeck, G; Dorwarth, U; Mattke, S et al. Hemodynamic deterioration during ICD implant: predictors of high-risk patient. *Am Heart J*, Vol. 127, (1994), pp 1064–1067, ISSN 1097-6744
- Stevenson, WG; Khan, H; Sager, P; Saxon, LA; Middlekauff, HR; Natterson, PD; Wiener, I. Identification of reentry circuit sites during catheter mapping and radiofrequency ablation of ventricular tachycardia late after myocardial infarction. *Circulation*, Vol. 88, (1993), pp1647–167, ISSN 1524-4539
- Stevenson, WG; Friedman, PL; Kocovic, D; Sager, PT; Saxon, LA; Pavri, B. Radiofrequency catheter ablation of ventricular tachycardia after myocardial infarction. *Circulation*, Vol. 98, (1998), pp 308 –314, ISSN 1524-4539
- Stevenson, WG; Wilber, DJ; Natale, A; Jackman, WM; Marchlinski, FE; Talbert, T; Gonzalez, MD; Worley, SJ; Daoud, EG; Hwang, C; Schuger, C; Bump, TE; Jazayeri, M; Tomassoni, GF; Kopelman, HA; Soejima, K; Nakagawa, H. Multicenter Thermocool VT Ablation Trial Investigators. Irrigated radiofrequency catheter ablation guided by electroanatomic mapping for recurrent ventricular tachycardia after myocardial infarction: the multicenter thermocool ventricular tachycardia ablation trial. *Circulation*, Vol. 118, (2008), pp 2773–2782 ISSN 1524-4539
- Stevenson WG. Preventing ventricular tachycardia with catheter ablation. *Lancet*, Vol. 375, (2010), pp 4-6, ISSN 1470-2045
- Tanner, H; Hindricks, G; Volkmer, M; Furniss, S; Kuck, KH; Kottkamp, H; Lacroix, D; de Chillou, C; Almendral, J; Caponi, D; Kuck, KH; Kottkamp, H. Catheter ablation of recurrent scar-related ventricular tachycardia using electroanatomical mapping and irrigated ablation technology: results of the prospective multicenter Euro-VT-study. *J Cardiovasc Electrophysiol.*, Vol 21, (2010), pp 47-53, ISSN 1532-2092
- Tedeschi, CG & White, CW Jr. A morphologic study of canine hearts subjected to fibrillation, electrical defibrillation and manual compression. *Circulation*, Vol. 9, (1954), pp 916–21, ISSN 1524-4539

- Torp-Pedersen, C; Moller, M; Bloch-Thomsen, PE et al. Dofetilide in patients with congestive heart failure and left ventricular dysfunction. Danish Investigations of Arrhythmia and Mortality on Dofetilide Study Group. *N Engl J Med*, Vol. 341, (1999), pp 857–865, ISSN 1533-4406
- Trouton TG, Allen JD, Adgey AAJ. Oxidative metabolism and myocardial blood flow changes after transthoracic DC countershock in dogs. *Eur Heart J*, Vol. 13, (1992), pp 1431–40, ISSN 1522-9645
- Van Vleet, JF; Tacker, WA Jr; Geddes, LA; Ferrans, VJ. Acute cardiac damage in dogs given multiple transthoracic shocks with a trapezoidal wave-form defibrillator. *Am J Vet Res*, Vol. 38(1977), pp 617–26, ISSN 0002-9645
- Verma, A; Kilicaslan, F; Schweikert, RA; Tomassoni, G; Rossillo, A; Marrouche, NF; Ozduran, V; Wazni, OM; Elayi, SC; Saenz, LC; Minor, S; Cummings, JE; Burkhardt, JD; Hao, S; Beheiry, S; Tchou, PJ; Natale A. Short- and long-term success of substrate-based mapping and ablation of ventricular tachycardia in arrhythmogenic right ventricular dysplasia. *Circulation*, Vol. 111, (2005), pp 3209 – 3216, ISSN 1524-4539
- Volkmer, M; Ouyang, F; Deger, F; Ernst, S; Goya, M; Ba'nsch, D; Berodt, K; Kuck, KH; Antz, M. Substrate mapping vs. tachycardia mapping using CARTO in patients with coronary artery disease and ventricular tachycardia: impact on outcome of catheter ablation. *Europace*, (2006), pp 48–976, ISSN 1099-5129
- Vorperian, VR; Havighurst, TC; Miller, S et al. Adverse effects of low dose amiodarone: a meta-analysis. *JACC*, Vol. 30, (1997), pp 791–798, ISSN 1558-3597
- Waldo, AL; Camm, AJ; deRuyter, H et al. Effect of d-sotalol on mortality in patients with left ventricular dysfunction after recent and remote myocardial infarction. The SWORD Investigators. Survival with oral d-sotalol. *Lancet*, Vol. 348, (1996), pp 7–12, ISSN 1470-2045
- Wathen, MS; DeGroot, PJ; Sweeney, MO et al., for the PainFREE Rx II Investigators. Prospective randomized multicenter trial of empirical antitachycardia pacing versus shocks for spontaneous rapid ventricular tachycardia in patients with implantable cardioverter-defibrillators. Pacing Fast Ventricular Tachycardia Reduces Shock Therapies (PainFREE Rx II) trial results. *Circulation*, Vol. 110, (2004), pp 2591–2596, ISSN 1524-4539
- Wilber, DJ; Kopp, DE; Glascock, DN; Kinder, CA; Kall, JG. Catheter ablation of the mitral isthmus for ventricular tachycardia associated with inferior infarction. *Circulation*. Vol. 92, (1995), pp 3481–3489, ISSN 1524-4539
- Wilson, CM; Allen, JD; Bridges, JB; Adgey, AAJ. Death and damage caused by multiple direct current shocks: studies in an animal model. *Eur Heart J* Vol. 9, (1988), pp 1257–65, ISSN 1522-9645
- Worck, R; Haarbo, J; Thomsen, PEB. Electrophysiological study and 'slow' ventricular tachycardia predict appropriate therapy: results from a single-centre implantable cardiac defibrillator follow-up. *Europace*, Vol. 9, (2007), pp 1048–1053, ISSN 1099-5129

- Zhan, C; Baine, WB; Sedrakyan, A; Steiner, C. Cardiac device implantation in the United States from 1997 through 2004: a population-based analysis. *J Gen Intern Med.*, Vol. 23(Suppl 1). (2008), pp 13–19, ISSN 0884-8734
- Zhou L, Chen BP, Kluger J, Fan C, Chow MSS. Effects of amiodarone and its active metabolite desethylamiodarone on the ventricular defibrillation threshold. *JACC*, Vol. 31, (1998), pp 1672–1678, ISSN 1558-3597
- Zipes, DP; Camm, AJ; Borggrefe, M; Buxton et al. (2006). ACC/AHA/ESC 2006 guidelines for management of patients with ventricular arrhythmias and the prevention of sudden cardiac death: a report of the American college of cardiology/American heart association task force and the European society of cardiology committee for practice guidelines (Writing committee to develop guidelines for management of patients with ventricular arrhythmias and the prevention of sudden cardiac death): developed in collaboration with the European heart rhythm association and the heart rhythm society. *Circulation*, Vol. 114(10), pp e385–e484, ISSN 1524-4539

IntechOpen



Cardiac Defibrillation - Prediction, Prevention and Management of Cardiovascular Arrhythmic Events

Edited by Dr. Joyelle Harris

ISBN 978-953-307-692-8

Hard cover, 176 pages

Publisher InTech

Published online 14, November, 2011

Published in print edition November, 2011

Millions of people throughout the world currently depend on appropriate, timely shocks from implantable cardioverter defibrillators (ICDs) to avoid sudden death due to cardiovascular malfunctions. Therefore, information regarding the use, applications, and clinical relevance of ICDs is imperative for expanding the body of knowledge used to prevent and manage fatal cardiovascular behavior. As such, the apt and timely research contained in this book will prove both relevant to current ICD usage and valuable in helping advance ICD technology. This book is divided into three comprehensive sections in order to cover several areas of ICD research. The first section introduces defibrillator technology, discusses determinants for successful defibrillation, and explores assessments of patients who receive defibrillation. The next section talks about predicting, preventing, and managing near catastrophic cardiovascular events, and research presented in the final section examine special cases in ICD patients and explore information that can be learned through clinical trial examinations of patients with defibrillators. Each chapter of this book will help answer critical questions about ICDs.

How to reference

In order to correctly reference this scholarly work, feel free to copy and paste the following:

Andrea Colella, Marzia Giaccardi, Antonella Sabatini, Alfredo Zuppiroli and Gian Franco Gensini (2011). Prevention of Sudden Death – Implantable Cardioverter Defibrillator and/or Ventricular Radiofrequency Ablation, Cardiac Defibrillation - Prediction, Prevention and Management of Cardiovascular Arrhythmic Events, Dr. Joyelle Harris (Ed.), ISBN: 978-953-307-692-8, InTech, Available from:
<http://www.intechopen.com/books/cardiac-defibrillation-prediction-prevention-and-management-of-cardiovascular-arrhythmic-events/prevention-of-sudden-death-implantable-cardioverter-defibrillator-and-or-ventricular-radiofrequency->

INTECH
open science | open minds

InTech Europe

University Campus STeP Ri
Slavka Krautzeka 83/A
51000 Rijeka, Croatia
Phone: +385 (51) 770 447
Fax: +385 (51) 686 166

InTech China

Unit 405, Office Block, Hotel Equatorial Shanghai
No.65, Yan An Road (West), Shanghai, 200040, China
中国上海市延安西路65号上海国际贵都大饭店办公楼405单元
Phone: +86-21-62489820
Fax: +86-21-62489821

www.intechopen.com

IntechOpen

IntechOpen

© 2011 The Author(s). Licensee IntechOpen. This is an open access article distributed under the terms of the [Creative Commons Attribution 3.0 License](https://creativecommons.org/licenses/by/3.0/), which permits unrestricted use, distribution, and reproduction in any medium, provided the original work is properly cited.

IntechOpen

IntechOpen