

We are IntechOpen, the world's leading publisher of Open Access books Built by scientists, for scientists

6,900

Open access books available

185,000

International authors and editors

200M

Downloads

Our authors are among the

154

Countries delivered to

TOP 1%

most cited scientists

12.2%

Contributors from top 500 universities



WEB OF SCIENCE™

Selection of our books indexed in the Book Citation Index
in Web of Science™ Core Collection (BKCI)

Interested in publishing with us?
Contact book.department@intechopen.com

Numbers displayed above are based on latest data collected.
For more information visit www.intechopen.com



Molecular Analysis of Italian Patients with Congenital Glaucoma

Italo Giuffrè

Dept. of Ophthalmology and Otorhinolaryngology-Medical School-Catholic University of Roma Italy

1. Introduction

Glaucoma is a heterogeneous group of optic neuropathies which can lead to optic nerve loss of optic nerve fibers and permanent loss of vision. It is the second most prevalent cause of bilateral blindness in the Western World and it affects several million people worldwide. (Ray et al., 2003). There are different types of glaucoma: adult-onset open-angle glaucoma, the commonest form of the disease, representing almost half of all cases; as juvenile-onset open-angle glaucoma, followed by juvenile-onset open-angle glaucoma (Weisschuh and Schiefer, 2003), and as congenital glaucoma (CG), a clinical and genetic entity distinct from the juvenile form.

CG may be associated with ocular malformation, such as aniridia (Lee et al., 2003) or congenital hydrocephalus and anterior segment dysgenesis (Mandal et al., 2002). It results from poorly understood developmental abnormalities of the ocular drainage structures and is clinically characterized by high intraocular pressure (IOP), epiphora, corneal oedema, photophobia, blepharospasm and ocular enlargement (Libby et al., 2003). The disease is bilateral in approximately 75% of cases. CG incidence varies substantially among countries: it is estimated to occur in 1/10,000 births in Europe, in 1/2500 in Saudi Arabia and 1/1250 in the gypsy population of Slovakia. (Online Mendelian Inheritance in Man, OMIM 231300).

An increase in IOP, untreated either with surgery or pharmacological therapy, results in ocular enlargement (buphthalmos) and rapidly progressive cupping of the optic nerve with severe and irreversible alteration of the visual field (Belmouden et al., 2002, Bruttini et al., 2003). Early recognition and therapy can significantly improve the child's visual function. Onset of an aggressive form of glaucoma occurs between birth and 3 years of age. The disease has higher prevalence in males (2:1 M/F).

Most cases of CG are sporadic and recessive inheritance of CG is common, with almost complete penetrance in populations with a high consanguinity rate. Reduced penetrance (40% in some populations) and various phenotypic forms suggests a polygenic inheritance pattern or multifactorial aetiologies.

Genetic linkage studies, started in 1995, identified two separate loci (GLC3A on 2p21 and GLC3B on 1p36) associated with the disease, thus confirming that CG is genetically heterogeneous (Ohtake et al., 2003) (Sarfarazi et al., 1995). A few years later Sarfarazi reported that the cytochrome P4501B1 gene (CYP1B1, OMIM 601771), located within the GLC3A locus, was mutated in individuals with CG (Akarsu et al., 1996).

CYP1B1 belongs to a multigene superfamily of monomeric mixed-function monooxygenases, responsible for the phase I metabolism of a wide range of structurally different substrates including steroids and retinoids (Stoilov et al., 1996, Hayes et al., 1997). A specific CYP1B1 metabolite is most probably required for normal eye development, and its deficiency (or toxic accumulation) may result in CG (Zhang et al., 2000).

The CYP1B1 gene maps to 2p22-p21, contains 3 exons and 2 introns, and is expressed in several normal human tissues (Stoilov et al., 2001). Northern hybridization analysis showed strong expression of CYP1B1 in the anterior uveal tract, which is involved in secretion of the aqueous humor and in the regulation of outflow facility, processes that could contribute to the elevated intraocular pressure characteristic of CG (Sutter et al., 1994).

An extensive allelic heterogeneity was illustrated by a comprehensive sequence analysis of the translated regions of the CYP1B1 gene in 22 CG families and in 100 randomly selected normal individuals. Sixteen mutations and 6 polymorphisms were identified. The positions affected by these changes were evaluated by building a 3-dimensional homology model of the conserved C-terminal half of CYP1B1. These mutations may interfere with the heme incorporation by affecting the hinge region and/or the conserved core structures (CCS) that determine the proper folding and heme-binding ability of P450 molecules. In contrast, all polymorphic sites were poorly conserved and located outside the CCS (Stoilov et al., 1998).

More than 50 CYP1B1 pathogenic mutations, including 34 missense/nonsense substitutions, 10 small deletions, 6 small insertions, a 27 bp duplication and a deletion involving part of intron 2 and exon 3, have been described in various ethnic groups (Human Gene Mutations Database). Two CYP1B1 mutations, Met1Thr and Trp57Stop, in a compound heterozygosis status, have been identified as the molecular basis of Peters' anomaly that consists of corneal opacity, defects in the posterior structures of the cornea, iridocorneal and/or keratolenticular adhesions (Stoilov et al., 1998).

Mutations in CYP1B1 were found also in patients with juvenile glaucoma (JOAG), an early-onset form of open angle glaucoma that can be caused by a mutation in the gene encoding myocilin (MYOC/TIGR).

Vincent et al. studied the role of the CYP1B1 and MYOC/TIGR and found that MYOC/TIGR mutations included cases of juvenile glaucoma (either with or without pigmentary glaucoma) and mixed-mechanism glaucoma, and CYP1B1 mutations involved cases of juvenile open-angle glaucoma as well as cases of congenital glaucoma. That paper emphasized the genetic heterogeneity of juvenile and congenital glaucoma and demonstrated that the spectrum of expression of MYOC/ TIGR and CYP1B1 mutations is greater than expected. It also appeared that CYP1B1 may act as a modifier of MYOC/ TIGR expression and that these 2 genes may interact through a common pathway (Vincent et al., 2001). Both CYP1B1 and the MYOC/TIGR genes are expressed in the iris, trabecular meshwork, and ciliary body of the eye (Vincent et al., 2002).

Different CYP1B1 mutations together with a common MYOC/TIGR mutation (Gln48His) have been reported in CG patients (Ming and Muenke, 2002, Chakrabarti et al., 2005), thus suggesting a role for the MYOC gene in congenital glaucoma via digenic interactions with CYP1B1.

In 22 Saudi Arabian families, 40 apparently unaffected individuals had mutations in CYP1B1 and haplotypes identical to their affected siblings. Analysis of these relatives suggested the presence of a dominant modifier locus that is not linked genetically to CYP1B1. Linkage and Southern analyses excluded 3 candidate modifier loci, the arylhydrocarbon receptor (AHR) on 7p15, the arylhydrocarbon receptor nuclear translocator

(ARNT) on 1q21, and the CYP2D6 gene on 22q13.1 (Kaur et al., 2005, Bejjani et al., 2000, Libby et al., 2003).

To determine the possible role of the genetic defects described in CG cases in Italy, molecular analysis was undertaken, and the CYP1B1 and MYOC genes were screened for mutations. We describe here the pathogenic mutations found, some of which are not published, and the haplotype for five intragenic SNPs (Single Nucleotide Polymorphisms) associated with the mutations identified.

2. Methods

2.1 Subjects

Peripheral blood samples were collected from 72 patients (10 subjects belonging to 5 families and 62 unrelated subjects) with a diagnosis of bilateral CG coming from different Italian regions. A clinical report with demographic data and clinical evaluation was obtained for every patient. Reports contain subjective symptoms (irritability, sensitivity to light, tearing of the eyes) and objective evaluation (corneal diameter enlargement, type of corneal oedema, rupture of Descemet membrane, increase of IOP). Age of disease onset and number of surgical procedures are described in Table I.

ID	Age at Diagnosis (mo)	N° of Surgery events	Genotype	SNP 2	SNP 3	SNP 4	SNP 5	SNP 6
206	1	6	[L52P] / [R390S]	C/G	G/T	G/C	T/C	A
110	1	4	[A106D] / [A106D]	C	G	G	T	A
161	<1	3	[1236-1237insC] / [1436-1448del13]	C	G	G	T	A
164	<1	3	[A106D] / [1775-1801dup27]	C	G	G	T	A
113	1	3	[1436-1448del13] / -	C	G	G	T	A
2	1	2	[W57X] / [1775-1801dup27]	C	G	G	T	A
67	1	2	[G61E] / [1436-1448del13]	C	G	G	T	A
71	1	2	[1236-1237insC] / [1775-1801dup27]	C	G	G	T	A
153	<1	2	[G61E] / [1436-1448del13]	C	G	G	T	A
12	2	4	[G61E] / [1236-1237insC]	C	G	G	T	A
25	3	8	[1775-1801dup27] / [1775-1801dup27]	C	G	G	T	A
42	3	7	[G61E] / - *	C	G	G/C	T/C	A/G
63	5	3	[R355X] / [E387K]	C/G	G/T	G/C	T/C	A
1	5	2	[W57X] / [1775-1801dup27]	C	G	G	T	A
16	6	2	[L26R] / [R368H]	C	G	G	T	A
203	8	3	[A443G] / -	C/G	G/T	G	T	A
31	<1	1	[G61E] / [P52L]	C	G	G	T	A
54	1	1	[M1T] / [R368H]	C	G	G	T	A
62	12	0	[R355X] / [E387K]	C/G	G/T	G/C	T/C	A
89	<1	0	[G61E] / [1236-1237insC]	C	G	G	T	A
122	17 y	0	[G61E] / [G61E]	C	G	G	T	A
179	<1	0	[A237E] / [1581-1582ins10]	C	G	C	T	A
91	4 y	0	[1236-1237insC] / -	C	G	G/C	T/C	A
114	29 y	0	[1436-1448del13] / -	C	G	G	T	A
132	3 y	0	[G61E] / -	C	G	G/C	T/C	A/G

Table I. Phenotype-Genotype Correlation in Italian CG patients with CYP1B1 mutations. SNP 1-5 are: 1. 3947 C>G (R48G); 2. 4160 G>T (A119S); 3. 8131C>G (L432V); 4. 8184C>T (D449D); 5. 8195A>G (N435S).

2.2 Mutation screening

DNA was extracted from peripheral blood of patients and family members. The entire transcript region of the *CYP1B1* gene, organized in three exons of which only II and III are translated, was screened for mutations using four sets of primers:

set1 - cyp1b1Ex1F 5'-GCT TTG ACT CTG GAG TGG G-3' and cyp1b1Ex1R 5'-TCC ATC TGA AGA GGT CGC C-3' (424 bp); set2 - cyp1b1Ex2aF 5'-TGA GTG TCA CGC CTT CTC C-3' and cyp1b1Ex2aR 5'-CTC AGC ACG TGG CCC TC-3' (548 bp); set3 - cyp1b1Ex2bF 5'-ATG CGC AAC TTC TTC ACG-3' and cyp1b1Ex2bR 5'-AGA GGA GAA AAG ACC TGG C-3' (631 bp); set4 - cyp1b1Ex3F 5'-TGC TCA CTT GCT TTT CTC TC-3' and cyp1b1Ex3R 5'-ATT TTA CTC CTC ATC TCC GAA-3' (691 bp). Polymerase chain reaction (PCR) amplification was performed in a 50- μ L volume consisting of 50 to 100 ng genomic DNA, 10 mM Tris-HCl (pH 8.3), 50 mM KCl, 1.5 mM MgCl₂, 0.2 mM dNTPs, 0.8 M of each primer and 1 U Taq polymerase (AmpliTaq Polymerase - Perkin Elmer) with 10% dimethyl sulfoxide (DMSO) only for set 2 and set 3. PCR amplification procedures were performed under the following conditions: for set 1 and set 4, 2 cycles consisting of 60 seconds at 94°C, 30 seconds at 52°C and 90 seconds at 72°C followed by 35 cycles each consisting of 30 seconds at 94°C, 30 seconds at 54°C and 90 seconds at 72°C, followed by a final extension of 7 minutes at 72°C; for set 2 and set 3, 12 cycles consisting of 60 seconds at 94°C, 120 seconds at 64°C with a decrement of 1° C every cycle and 180 seconds at 72°C followed by 25 cycles each consisting of 60 seconds at 94°C, 120 seconds at 52°C and 5 minutes at 72°C, followed by a final extension of 7 minutes at 72°C.

Patients with none or only one mutation in the *CYP1B1* gene were screened for mutations in the transcript region of the *MYOC/TIGR* gene using three sets of primers:

Set 1 - myocEx1F 5'-GGC TGG CTC CCC AGT ATA TA - 3' and myoc1Ex1R 5'-CTG CTG AAC TCA GAG TCC CC- 3' (760 bp); set 2 - myocEx2F 5'-AAC ATA GTC AAT CCT TGG GCC- 3' and myocEx2R 5'- TAA AGA CCA TGT GGG CAC AA- 3' (230 bp); set 3 - myocEx3F 5'-TTA TGG ATT AAG TGG TGC TTC G- 3' and myocEx3R 5'- AGC ATC TCC TTC TGC CAT TG- 3' (870 bp). PCR amplification was performed in a 25- μ L volume consisting of 50 to 100 ng genomic DNA, 10 mM Tris-HCl (pH 8.3), 50 mM KCl, 1.5 mM MgCl₂, 0.2 mM dNTPs, 0.8 M of each primer and 1 U Taq polymerase (AmpliTaq Polymerase - Perkin Elmer). PCR amplification procedures were performed as follows: 35 cycles consisting of 60 seconds at 94°C, 60 seconds at 55°C and 120 seconds at 72°C followed by a final extension of 7 minutes at 72°C.

PCR products were sequenced on an automated DNA sequencer (ABI-310; PE Applied Biosystems).

Every nucleotide change is indicated using the sequence of the cDNA published with the accession number NM_000104.2 for the *CYP1B1* and NM_000261 for the *MYOC/TIGR* transcript. The position of mutations were described as in Recommendations for a Nomenclature System for Human Gene Mutations (Antonarakis et al., 1998).

2.3 Comparative sequencing alignment

The cytochrome P450B1 and *MYOC/TIGR* sequences were obtained from GenBank provided by the National Center for Biotechnology Information, Bethesda, MD, USA (<http://www.ncbi.nlm.nih.gov/Genbank>).

Computer-assisted sequence alignment was performed with the pattern-induced multisequence alignment program (PIMA; provided by Baylor College of Medicine Search Launcher and available at: <http://searchlauncher.bcm.tmc.edu>).

3. Results

3.1 CYP1B1 gene sequence analysis

Twenty-five patients (34,7%) were carriers of mutations in the coding region of CYP1B1 gene: 17 were compound heterozygotes, 2 were homozygotes, 6 carried only one mutation in a single allele (Table II).
The analysis was also performed on relatives of mutated subjects in order to verify the allele segregation and to complete the family study.

Exon		Effect	Patients	N (%) of affected chromosomes (n=44)
2	T374C	M1T	54	1 (2.3%)
2	T449G	L26R ^	16	1 (2.3%)
2	C527T	P52L*^	31, 206	2 (4.5%)
2	G543A	W57X	1, 2	2 (4.5%)
2	G554A	G61E	12, 31, 67, 89, 122, 153, 42, 131	9 (20.5%)
2	C689A	A106D^	110, 164	3 (6.8%)
2	C1082A	A237E^	179	1 (2.3%)
2	1236-1237insC	Frameshit beginning from aa 288	12, 71, 89, 91, 161	5 (11.4%)
3	C1435T	R355X	62, 63	2 (4.5%)
3	1436-1448del13	Frameshit beginning from aa 355	67, 113, 114, 153, 161	5 (11.4%)
3	G1475A	R368H	16, 31	2 (4.5%)
3	G1531A	E387K	62, 63	2 (4.5%)
3	C1540A	R390S	206	1 (2.3%)
3	1581-1582ins10	Frameshit beginning from aa 404	179	1 (2.3%)
3	T1692G	F440L*^	31, 206	1 (2.3%)
3	C1700G	A443G	203	
3	1775-1801dup27	Frameshit beginning from aa 468	1, 2, 25, 71, 164	6 (13.6%)

* present on the same chromosome inherited from the unaffected father, in patients 31 and 206 who are also compound heterozygotes for other published pathological mutations (G61E and R390S respectively).
^ new variations

Table II. Frequencies of CYP1B1 mutations in the Italian population

Out of the seventeen different CYP1B1 variations identified, twelve had been previously characterized as pathogenetic: six aminoacid substitutions (M1T, G61E, R368H, E387K, R390S and A443G), two stop codons (W57X, R355X), two insertions (1236-1237insC and

1581-1582ins TCATGCCACC), one deletion (1436-1448delGAGTGCAGGCAGA) and one duplication (1775-1801dupGGCGGTGCATTGGCGAAGAACTTTCTA). Five variations (L26R, P52L, A106D, A237E, F440L) are described here for the first time (Table II).

The new variants show the following characteristics: L26R, which affects the second nucleotide of codon 26, substitutes leucine, an aliphatic and hydrophobic residue with a polar and hydrophilic arginine. The variation L26R is present in patient 16 with the known mutation R368H. A237E presents a substitution of an alanine, weakly hydrophobic with small nonpolar side chains, with glutamic acid that carries a hydrophilic acidic group with strong negative charge and was found in patient 179 associated with the insertion 1581-1582ins10.

A106D was observed on three CG chromosomes (patient 110 is homozygous and patient 164 is compound heterozygote with the known mutation 1775-1801dup27). This change causes a missense substitution of alanine (weakly hydrophobic with small nonpolar side chains) with asparagine (with polar, uncharged side chains).

P52L changes proline, often present in the protein turning point and with small nonpolar side chains, to leucine (aliphatic and hydrophobic). F440L changes phenylalanine, a hydrophobic aminoacid usually orientated towards the interior of the folded protein, to leucine with the same characteristics as phenylalanine.

The variations P52L and F440L are present in cis in patients 31 and 206, who are also compound heterozygotes for other published pathological mutations (G61E and R390S respectively); these patients are from the same Italian region.

All new identified aminoacidic changes alter residues that are evolutionarily conserved in Eukariota and in the cytochrome P450 family (Figs. # 1 and 2).

The most frequent mutations in our CG patients are G61E, 1775-1801dup27, 1436-1448del13 and 1236-1237insC; they occur respectively in 20.5%, 13.6%, 11.4% and 11.4% of mutated chromosomes (Table II).

Two nucleotide variants were found in the untranslated exon 1: one of these (cDNA 198 C/T) was characterized as a single nucleotide polymorphism (NCBI SNPs databank rs 9341244) while the second one (C>A at 226 of cDNA) was identified for the first time in patient 91.

In these 72 Italian CG subjects we also identified 6 Single Nucleotide Polymorphisms previously described and 2 new synonymous changes (G/A 359E and C/T 363V) whose frequencies are 1/144 and 3/144 respectively.

3.2 CYP1B1 SNP haplotypes

We analyzed the following known CYP1B1 polymorphisms (Akarsu et al., 2002, Sutter et al., 2005, Fan et al., 2004) in our patients: g.3947C>G, g.4160G>T, g.8131C>G, g.8184C>T, g.8195A>G. (Table II). The most frequent haplotype in individuals with CYP1B1 mutations is 5'-C-G-G-T-A-3', as already described in other populations (Belmouden et al., 2002, Kaur et al., 2005, Bejjani et al., 1998, Stoilov et al., 2001). This haplotype is present in 41 of the 44 mutated alleles (93%), and in only 20 of the remaining 100 wild type alleles (20%); the difference is statistically significant ($Q^2 = 22.23$, $p < 0.0001$, CI95% 0.555-0.905).

Considering the seventeen mutations we found, fifteen are linked to the 5'-C-G-G-T-A-3' haplotype and two (E387K and R390S) are associated with two other different haplotypes.

3.3 MYOC/TIGR gene analysis

The report in published papers of patients with mutations in either CYP1B1 and MYOC genes prompted us to look for MYOC/TIGR variations in the six patients having only one mutation in CYP1B1.

1	--MGTSLSPNDFWPLNPLSIQQTLLI	LLSVLATVHV	GQRLLRQ	42
1	--MATSLGPDAPLQPSALSAQQTLLI	LLSVLAAVHAGQW	LLRQ	42
1	--MATSLSADSPQQLSSLSTQQTLLI	LFVLAAVHLGQW	LLRQ	42
1	--MALERLGEALRGTPPL---	QSSLLI	LLCLLAAVHLGKLLLR	39
1	-MLAALIYTYLAILLSVLATSYICIIY	GVKRRVLQP	VKTKNSTE	43
43	R--RRQ-LRSAE	PGPFAWPLIGNAAAVGQAAHLSF	-----	74
43	R--RRQ-PGSAE	PGPFAWPLIGNAAAMGPAPHLSF	-----	74
43	W--QRK-PWSSE	PGPFPWPLIGNAAAVGQASHLYF	-----	74
40	RRWRRQGQRLAE	PGPFPWPLIGNAAQLGSAPHL	SFEKLGSAPHQ	83
44	INHNAYQKYTQAP	GGPRPWPIIGNLHLLDRYRDS	PFAG-----	80
75	--ARLARRYGDVFQIRLGSCPIVV	LNGERAIHQALVQ	QGSADFAD	116
75	--ARLARRYGDVFQIRLGSCRVV	LNGERAIHQALVQ	QGAADFAD	116
75	--ARLARRYGDVFQIRLGSCPVV	LNGESAIHQALVQ	QGSIFAD	116
84	SLARLASTYGAVFQLRSGRMPVV	VVNGESAIHQALVRQ	GAAFAFAG	127
81	-FTALAQQYGDIYSLTFGHTRCL	VVNNLELIREV	LNQNGKVM	123
204	VMSAVCFGCRYSHDD-----	PEFRELLSHNEEF	GRTVGAG	238
204	VMSAVCFGCRYSHDD-----	AEFRELLSHNEEF	GRTVGAG	238
204	VMSAVCFGCRYNHDD-----	AEFLELLSHNEEF	GRTVGAG	238
212	MFSQYMCSLRFDYDD-----	VDFQQIVQYFDEIF	WEINQG	246
409	---VLGYHIPKDTVV	VFNQWSVNHDPVKWPN-PEN	FDPARFLDK	448
409	---VLGYHIPKDTVV	VFNQWSVNHDPVKWPN-PED	FDPVRFLDK	448
409	---VLGYHIPKNTVV	VFNQWSVNHDPKWPEN-PED	FDPARFLDK	448
285	---IMGYLIPKDTV	VIFVNQWSVNHDPKWSN-PED	FDPTRFLDE	324
404	---ISGYGVTKGTIV	FINNYVLNTSEKFWVN-PKE	FNPLRFLEP	443

Fig. 1. Aminoacidic Sequence Alignment of CYP1B1 and homolous genes in Eukariota. Lane 1:CYP1B1 H.sapiens , lane 2 LOC483038 C.familiaris, lane 3: Cyp1b1 M.musculus, lane 4: LOC421466 G.gallus, lane 5: spo D.melanogaster.

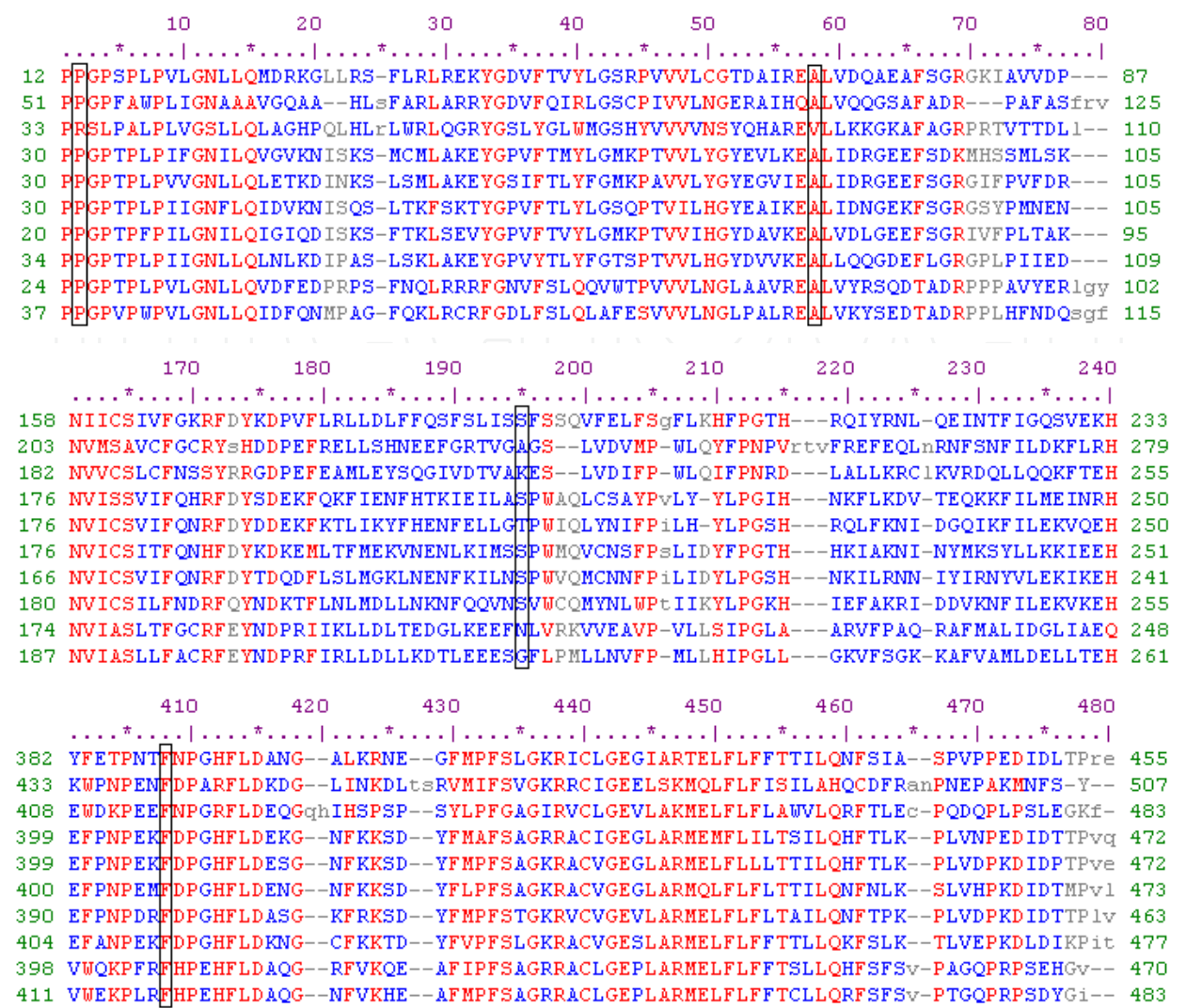


Fig. 2. Aminoacidic Sequence Alignment of CYP1B1 (second lane) and other P450 family members (CYP2b4, CYP17A1, CYP2C22, CYP2C3, CYP2C7, CYP2C1, CYP2C23, CYP2D14, CYP2D4) .

The analysis of the complete MYOC gene sequence identified, in three patients, two transitions (G>A at 249 and C>T at 1362 cDNA positions) causing the two aminoacidic variations R76K and A447V. Lysine in position 76 is similar to Arginine; Valine in position 447, an aminoacid with a large aliphatic hydrophobic side chain, usually located inside the protein, substitutes Alanine that has only small steric limits and can be located in the hydrophilic areas either outside or in the hydrophobic areas inside the protein.

In patient 42 the A447V is present with the G61E common CYP1B1 mutation; two mutations are distinctly inherited from the two parents. Patient 132, with a single maternally transmitted CYP1B1 G61E mutation, inherited R76K from the father while patient 203 received both the R76K and the CYP1B1 A443G from the unaffected father, who is homozygotes for R76K.

To confirm the polymorphic role of R76K, already suggested in literature (Colomb et al., 2003, Edward et al., 2004), we analyzed 100 chromosomes in a random Italian population, obtaining a frequency of 0,125 and 0,875 for the A and G alleles respectively.

4. Discussion

Molecular analysis of the CYP1B1 gene performed on 72 Italian patients with found eighteen different variations in 25 (34.7%) individuals. Four of these variations (L26R, P52L, A106D, A237E) are reported here for the first time and produced a non synonymous aminoacidic change. Their pathological role in CG development could be an explanation for the significant changes in the protein caused by the aminoacidic substitutions in Eukariota and cytochrome P450 family conserved regions. The new changes are in a compound heterozygous state with already described pathological mutations and are distributed in exon # 2 and 3.

The conservative aminoacid change F440L always found in cis with the P52L in 4 subjects, both in patients (with another CYP1B1 mutation) and in healthy carriers, could be classified as a rare polymorphism linked to the pathological P52L.

One of the two nucleotide variants we identified in the untranslated exon 1 had not been previously reported. In patient 91 a C to A at position 226cDNA was found combined with the pathological mutation 1236-1237insC. The presence in cis with the CG mutation also in the unaffected mother suggests that this ex1UTR variation does not play a pathological role in CG development.

We identified two new synonymous changes (G >A at the Glutamic Acid in position 359 and C>T at the Valine in position 363) in 2 different patients. These variations do not introduce aminoacidic changes and were not found in 100 analyzed chromosomes, so we can consider them as rare polymorphisms.

Clinical evaluation of patients cannot show a particular phenotype-genotype correlation even if mutations that produce truncated proteins seem more frequent in patients with a disease onset before the first year of life and more then two surgical procedures.

As also described in Indian and Saudi Arabian populations, we identified the M1T and W57X CYP1B1 mutations that have been previously associated only with Peters' anomaly, in three of our CG patients. These results support the concept that distinct CYP1B1 mutations are not responsible for the two different diseases and that a specific phenotype could result from interactions between CYP1B1 and other modifier genes.

The previously described CYP1B1 intragenic polymorphisms (R48G, A119S, L432V, D449D and N453S) were analyzed and the most frequent haplotype (93%) among affected individuals with CYP1B1 mutations appears to be 5'-C-G-G-T-A-3', which has been associated with fifteen different mutations. This particular haplotype was also observed in 94.7% of the Saudi Arabian and in the majority of the Brazilian CG chromosomes. Interestingly, in our 47 CG patients without mutations in CYP1B1, the frequency of the 5'-C-G-G-T-A-3' haplotype is the same as the general Italian population (23% vs 20%). The association of this specific uncommon haplotype with the majority of CYP1B1 mutations in geographically and ethnically distinct populations could confirm the hypothesis that this DNA sequence predisposes the gene to mutational events as already suggested.

The presence in other populations of patients with mutations in both CYP1B1 and MYOC genes prompted us to analyze the six patients that had only one mutation in CYP1B1 for the presence of MYOC/TIGR variations. The R76K was found in compound heterozygosis in patient 132 and 203 with the G61E and A443G CYP1B1 mutations respectively. The presence of MYOC R76K aminoacidic change in both alleles of patient 203's unaffected father, who also had a CYP1B1 mutation, defines the non pathological role of this variation, confirmed as a polymorphism in an Italian population frequency of 0.125 and 0.875 for the A and G alleles respectively.

In patient 42 we found, in double heterozygous status with the CYP1B1 G61E, the new MYOC variation A447V. This substitution affects a conserved aminoacidic position and introduces a residue with peculiar characteristics that can alter the protein functions. The two mutations are distinctly inherited from the unaffected heterozygous parents and the A447V was not found in 100 control chromosomes. This is the first report of CYP1B1 and MYOC mutations in Italian patients with congenital glaucoma.

The molecular characterisation of both CYP1B1 and MYOC/TIGR genes in affected subjects allowed us to better clarify the genetic basis of the CG disease. Our results confirm the major role of CYP1B1 in congenital glaucoma and also support an autosomic recessive role of MYOC/TIGR gene in a digenic inheritance model. The presence of only one CYP1B1 mutation in 5 patients confirms that other genes could interact with the function of the CYP1B1 codified protein in CG onset with different digenic inheritances. We did not look for and we did not find any genotype and phenotype correlations in our patients (Hollander et al., 2006). A study of Iranian patients did not find any myocilin mutations as cause of congenital glaucoma (Elahi et al., 2010).

5. Acknowledgements

The Author wants to thank the whole staff of Medical Genetics Institute – Catholic University of Roma, Roma, Italy- EU.

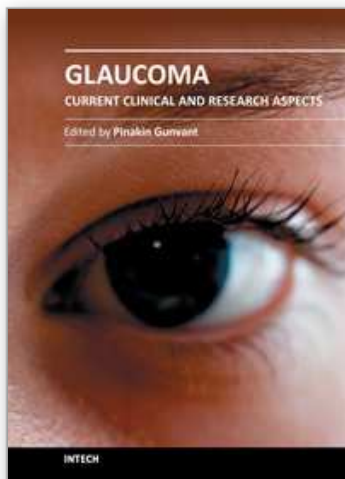
6. References

- Akarsu AN, Turacli ME, Aktan GS et al.(1996). A second locus (GLC3B) for primary congenital glaucoma (buphthalmos) maps to the 1p36 region. *Hum Mol Gen*, 5: 1199-203.
- Antonarakis S and the Nomenclature Working group (1998). *Hum Mut* ; 11:1-3.
- Bejjani BA, Lewis RA, Tomey KF, Anderson KL, Dueker DK, Jabak M, Astle WF, Otterud B, Leppert M, Lupski JR.(1998) Related Articles, Links Mutations in CYP1B1, the gene for cytochrome P4501B1, are the predominant cause of primary congenital glaucoma in Saudi Arabia. *Am J Hum Genet*. 62(2):325-33.
- Bejjani B A, Stockton DW, Lewis RA, Tomey KF, Dueker DK, Jabak M, Astle WF, Lupski JR(2000). Multiple CYP1B1 mutations and incomplete penetrance in an inbred population segregating primary congenital glaucoma suggest frequent de novo events and a dominant modifier locus. *Hum. Molec. Genet*. 9: 367-74.
- Belmouden A, Melki R, Hamdani M et al.(2002). A novel frameshift founder mutation in the cytochrome P450 1B1 (CYP1B1) gene is associated with primary congenital glaucoma in Morocco. *Clin Genet*; 62: 334-9.
- Bruttini M, Longo I, Frezzotti P et al.(2003): Mutations in the myocilin gene in families with primary open-angle glaucoma and juvenile open-angle glaucoma. *Arch Ophthalmol*; 121: 1034-8.
- Chakrabarti S, Kaur K, Komatireddy S, Acharya M, Devi KR, Mukhopadhyay A, Mandal AK, Hasnain SE, Chandrasekhar G, Thomas R, Ray K.(2005). Gln48His is the prevalent myocilin mutation in primary open-angle and primary congenital glaucoma phenotypes in India. *Mol Vis*. 4;11:111-3.
- Colomb E, Kaplan J, Garchon HJ (2003). Novel cytochrome P4501B1 (CYP1B1) mutations in patients with primary congenital glaucoma in France. *Hum Mut* ; 22 (6): 496.

- Edward D, Al Rajhi A, Lewis RA, Curry S, Wang Z, Bejjani B.(2004). Molecular basis of Peters anomaly in Saudi Arabia. *Ophthalmic Genet.*; 25 (4):257-70.
- Elahi E, Narooe-Nejhad M, Suri F and Yazdani F(2010): Myocilin mutations are not a major cause of primary congenital glaucoma in Iranian patients. *J Ophthalmic Vis Res.*; 5 (2): 101-4.
- Fan BJ, Leung YF, Pang CP, Baum L, Tam OS, Wang N, Lam SC(2004). Single nucleotide polymorphisms of the myocilin gene in primary open-angle glaucoma patients. *Zhonghua Yi Xue Yi Chuan Xue Za Zhi.* ;21(1): 70-3. Chinese.
- Hayes CL, Spink DC, Spink BC, Cao JQ, Walker NJ, Sutter TR.(1997). 17 β -estradiol hydroxylation catalyzed by cytochrome P4501B1. *Proc Natl Acad Sci USA*, 93: 9776-81.
- Hollander DA, Sarfarazi M, Stoilov I et al.(2006). Genotype and phenotype correlations in congenital glaucoma. *Trans Am Ophthalmol Soc.* , 104: 183-95.
- Kaur K, Reddy AB, Mukhopadhyay A, Mandal AK, Hasnain SE, Ray K, Thomas R, Balasubramanian D, Chakrabarti S (2005). Myocilin gene implicated in primary congenital glaucoma. *Clin Genet.* ;67(4):335-40.
- Lee WB, Brandt JD, Mannis MJ et al.(2003). Aniridia and Brachmann-de Lange syndrome: a review of ocular surface and anterior segment findings. *Cornea*; 22 (2): 178-80.
- Libby RT, Smith RS, Savinova OV et al.(2003). Modification of ocular defects in mouse developmental glaucoma models by tyrosinase. *Science*, vol. 299, 1578-81.
- Mandal AK, Hornby SJ, Jones RB.(2002). Congenital hydrocephalus associated with congenital glaucoma and natal teeth. *Indian J Ophthalmol* ; 50 (4): 322-3.
- Mashima Y, Suzuki Y, Sergeev Y, Ohtake Y, Tanino T, Kimura I, Miyata H, Aihara M, Tanihara H, Inatani M, Azuma N, Iwata T, Araie M.(2001). Novel cytochrome P4501B1 (CYP1B1) gene mutations in Japanese patients with primary congenital glaucoma. *Invest Ophthalmol Vis Sci.* 2001 Sep;42(10):2211-6. Erratum in: *Invest Ophthalmol Vis Sci* ;42(12):2775.
- Ming, JE., Muenke, M(2002). Multiple hits during early embryonic development: digenic diseases and holoprosencephaly. *Am. J. Hum. Genet.*, 71: 1017-32.
- Ohtake Y, Tanino T, Suzuki Y et al.(2003). Phenotype of cytochrome P4501B1 gene (CYP1B1) mutations in Japanese patients with primary congenital glaucoma. *Br J Ophthalmol.*; 87: 302-4.
- Ray K, Mukhopadhyay A, Acharya M(2003). Recent advances in molecular genetics of glaucoma. *Mol Cell Biochem* ; 253 (1-2): 223-31.
- Sarfarazi M, Akarsu, AN, Hossain, A, et al(1995). Assignment of a locus (GLC3A) for primary congenital glaucoma (buphthalmos) to 2p21 and evidence for genetic heterogeneity. *Genomics* , 30: 171-7.
- Stoilov I, Akarsu AN, Sarfarazi, M(1997). Identification of three different truncating mutations in the cytochrome P4501B1 (CYP1B1) gene as the principal cause of primary congenital glaucoma (buphthalmos) in families linked to the GLC3A locus on chromosome 2p21. *Hum Mol Gen* , 6: 641-7.
- Stoilov I, Akarsu AN, Alozie I, Child A, Barsoum-Homsy M, Turacli ME, Or M, Lewis RA, Ozdemir N, Brice G, Aktan SG, Chevrette L, Coca-Prados M, Sarfarazi, M(1998): Sequence analysis and homology modeling suggest that primary congenital glaucoma on 2p21 results from mutations disrupting either the hinge region or the conserved core structures of cytochrome P4501B1. *Am. J. Hum. Genet.* , 62: 573-84.

- Stoilov I, Jansson I, Sarfarazi M, Schenkman JB.(2001). Roles of cytochrome P450 in development. *Drug Metab Drug Interact*, 18: 33-55.
- Stoilov IR, Costa VP, Vasconcellos JPC et al.(2002). Molecular genetics of primary congenital glaucoma in Brazil. *Invest Ophthalmol Vis Sci* ; 43: 1820-7.
- Sutter TR, Tang YM, Hayes CL, Wo Y-YP, Jabs EW, Li X, Yin H, Cody C W, Greenlee WF(1994). Complete cDNA sequence of a human dioxin-inducible mRNA identifies a new gene subfamily of cytochrome P450 that maps to chromosome 2. *J. Biol. Chem* , 269: 13092-9.
- Vincent A, Billingsley G, Priston M, Williams-Lyn D, Sutherland J, Glaser T, Oliver E, Walter MA, Heathcote G, Levin A, Heon E(2001). Related Articles, Links Phenotypic heterogeneity of CYP1B1: mutations in a patient with Peters' anomaly. *J Med Genet.*;38(5): 324-6.
- Vincent AL, Billingsley G, Buys Y, Levin AV, Priston M, Trope G, Williams-Lyn D, Heon E(2002). Digenic inheritance of early-onset glaucoma: CYP1B1, a potential modifier gene. *Am J Hum Genet.*;70(2):448-60.
- Weisschuh N, Schiefer U(2003). Progress in the genetics of glaucoma. *Dev Ophthalmol* ; 37: 83-93.
- Zhang QY, Dunbar D, Kaminsky L(2000). Human cytochrome P-450 metabolism of retinals to retinoic acids. *Drug Metab Disp* , 28: 292-7.

IntechOpen



Glaucoma - Current Clinical and Research Aspects

Edited by Dr. Pinakin Gunvant

ISBN 978-953-307-263-0

Hard cover, 376 pages

Publisher InTech

Published online 09, November, 2011

Published in print edition November, 2011

This book summarizes current literature about research and clinical science in glaucoma and it is a synopsis and translation of the research conducted by individuals who are known in each of their respective areas. The book is divided into two broad sections: basic science and clinical science. The basic science section examines bench- and animal-modeling research in an attempt to understand the pathogenesis of glaucoma. The clinical science section addresses various diagnostic issues and the medical, laser and surgical techniques used in glaucoma management.

How to reference

In order to correctly reference this scholarly work, feel free to copy and paste the following:

Italo Giuffre' (2011). Molecular Analysis of Italian Patients with Congenital Glaucoma, Glaucoma - Current Clinical and Research Aspects, Dr. Pinakin Gunvant (Ed.), ISBN: 978-953-307-263-0, InTech, Available from: <http://www.intechopen.com/books/glaucoma-current-clinical-and-research-aspects/molecular-analysis-of-italian-patients-with-congenital-glaucoma>

INTECH
open science | open minds

InTech Europe

University Campus STeP Ri
Slavka Krautzeka 83/A
51000 Rijeka, Croatia
Phone: +385 (51) 770 447
Fax: +385 (51) 686 166
www.intechopen.com

InTech China

Unit 405, Office Block, Hotel Equatorial Shanghai
No.65, Yan An Road (West), Shanghai, 200040, China
中国上海市延安西路65号上海国际贵都大饭店办公楼405单元
Phone: +86-21-62489820
Fax: +86-21-62489821

© 2011 The Author(s). Licensee IntechOpen. This is an open access article distributed under the terms of the [Creative Commons Attribution 3.0 License](https://creativecommons.org/licenses/by/3.0/), which permits unrestricted use, distribution, and reproduction in any medium, provided the original work is properly cited.

IntechOpen

IntechOpen