

We are IntechOpen, the world's leading publisher of Open Access books Built by scientists, for scientists

6,900

Open access books available

185,000

International authors and editors

200M

Downloads

Our authors are among the

154

Countries delivered to

TOP 1%

most cited scientists

12.2%

Contributors from top 500 universities



WEB OF SCIENCE™

Selection of our books indexed in the Book Citation Index
in Web of Science™ Core Collection (BKCI)

Interested in publishing with us?
Contact book.department@intechopen.com

Numbers displayed above are based on latest data collected.
For more information visit www.intechopen.com



Standardised Geo-Sensor Webs for Integrated Urban Air Quality Monitoring

Bernd Resch, Rex Britter, Christine Outram, Xiaoji Chen and Carlo Ratti
Massachusetts Institute of Technology,
USA

1. Introduction

'In the next century, planet earth will don an electronic skin. It will use the Internet as a scaffold to support and transmit its sensations. This skin is already being stitched together. It consists of millions of embedded electronic measuring devices: thermostats, pressure gauges, pollution detectors, cameras, microphones, glucose sensors, EKGs, electroencephalographs. These will probe and monitor cities and endangered species, the atmosphere, our ships, highways and fleets of trucks, our conversations, our bodies – even our dreams.' (Gross, 1999)

Following this comprehensive vision by Neil Gross (1999), it can be assumed that sensor network deployments will increase dramatically within the coming years, as pervasive sensing has recently become feasible and affordable. This enriches knowledge about our environment with previously uncharted real-time information layers.

However, leveraging sensor data in an ad-hoc fashion is not trivial as ubiquitous geo-sensor web applications comprise numerous technologies, such as sensors, communications, massive data manipulation and analysis, data fusion with mathematical modelling, the production of outputs on a variety of scales, the provision of information as both hard data and user-sensitive visualisation, together with appropriate delivery structures. Apart from this, requirements for geo-sensor webs are highly heterogeneous depending on the functional context.

This chapter addresses the nature of this supply chain; one overarching aspect is that all elements are currently undergoing both great performance enhancement combined with drastic price reduction (Paulsen & Riegger, 2006). This has led to the deployment of a number of geo-sensor networks. On the positive side the growing establishment of such networks will further decrease prices and improve component performance. This will particularly be so if the environmental regulatory structure moves from a mathematical modelling base to a more pervasive monitoring structure.

Of specific interest in this chapter is our concern that most sensor networks are being built up in monolithic and specific application-centred measurement systems. In consequence, there is a clear gap between sensor network research and mostly very heterogeneous end user requirements. Sensor network research is often dedicated to a long-term vision, which tells a compelling story about potential applications. On the contrary, the actual implementation is mostly not more than a very limited demonstration without taking into account well-known issues such as interoperability, sustainable development, portability or the coupling with established data analysis systems.

Therefore, the availability of geo-sensor networks is growing but still limited. Deborah Estrin pointed out in 2004 that no real sensor network applications exist, apart from short-lived prototypical and very domain-specific demos (Xu, 2004). Recently, some examples of urban geo-sensor networks arose, but the clear social, health and economic benefits have not been demonstrated or described in a manner that would compel this sort of investment in particular for urban environments.

The goal of the Common Scents project is that its highly flexible architecture will bring sensor network applications one step further towards the realisation of the vision of a 'digital skin for planet earth' and have particularly far-reaching impacts on urban monitoring systems through the deployment of ubiquitous and very fine-grained sensor networks. In other words, the broad goal of the project is to develop an overarching infrastructure for various kinds of sensor network applications.

After this brief introduction the chapter provides a discussion of related work. Thereafter, we present the Common Scents approach and implementation for urban monitoring applications. Then, we illustrate some possible application areas for the system. We treat challenges for the deployment of sensor networks that are specific to the city and analyse how such systems can change the city as the functional context by adding new unseen information layers. We conclude with a short summary, discussion and future outlook.

2. Related work

The first domain of related work is **sensor network** development for environmental monitoring. The Oklahoma City Micronet (University of Oklahoma, 2009) is a network of 40 automated environmental monitoring stations across the Oklahoma City metropolitan area. The network consists of 4 Oklahoma Mesonet stations and 36 sites mounted on traffic signals. At each traffic signal site, atmospheric conditions are measured and transmitted every minute to a central facility. The Oklahoma Climatological Survey receives the observations, verifies the quality of the data and provides the data to Oklahoma City Micronet partners and customers. One major shortcoming of the system is that it is a very specialised implementation not using open standards or aiming at portability. The same applies to CORIE (Center for Coastal and Land-Margin Research, 2009), which is a pilot environmental observation and forecasting system (EOFS) for the Columbia River. It integrates a sensor network, a data management system and advanced numerical models.

Paulsen (2008) presents a sensing infrastructure called PermaGIS that attempts to combine sensor systems and GIS-based visualisation technologies. The sensing devices, which measure rock temperature at ten minute intervals, focuses on optimising resource usage, including data aggregation, power consumption, and communication within the sensor network. In its current implementation, the infrastructure does not account for geospatial standards in sensor observations. The visualisation component uses a number of open standards (OGC WMS, WFS) and open-source services (UMN Map Server, Mapbender).

There are a number of approaches to **leveraging sensor information in GIS** applications. Kansal et al. (2007) present the SenseWeb project, which aims to establish a Wikipedia-like sensor platform. The project seeks to allow users to include their own sensors in the system and thus leverage the 'community effect', building a dense network of sensors by aggregating existing and newly deployed sensors within the SenseWeb application. Although the authors discuss data transformation issues, data fusion, and simple GIS analysis, the system architecture is not based on open (geospatial) standards, only standard

web services. The web portal implementation, called SensorMap (Nath et al., 2006), uses the Sensor Description Markup Language (SDML), an application-specific dialect of the OGC SensorML standard.

A GIS mash-up for environmental data visualisation is presented in the nowCOAST application (National Oceanic and Atmospheric Administration, 2011). Data from providers such as National Oceanic and Atmospheric Administration (NOAA), U.S. Geological Survey (USGS), Department of Defence (DOD) or local airports, are integrated in a web-based graphical user interface. nowCOAST visualises several types of raw environmental parameters and also offers a 24-hour sea surface temperature interpolation plot with 0.5 degree spatial resolution, produced using a two-dimensional variation interpolation scheme. The system does not make use of open standards for sensor measurements and data provision.

The second related research area is real-time data integration and **sensor fusion** for geospatial analysis systems. Harrie (2004) and Lehto & Sarjakoski (2005) present web services based on the classic request/response model. Although both methods widely use open GIS standards, they are not suitable for the integration of real-time data for large volumes of data. Sarjakoski et al. (2004) establish a real-time spatial data infrastructure (SDI), which performs several application-specific steps, such as coordinate transformation, spatial data generalisation, query processing or map rendering and adaptation. However, the implemented system accounts neither for event-based push mechanisms nor for the integration of sensor data.

Other approaches for real-time data integration try to tackle the issue from a database perspective. Oracle's system, presented by Rittman (2008), is essentially a middleware between (web) services and a continuously updated database layer. Like Sybase Inc. (2008), the Oracle approach is able to detect database events in order to analyse heterogeneous data sources and trigger actions accordingly. Rahm et al. (2007) present a more dynamic method of data integration and fusion using on-the-fly object matching and metadata repositories to create a flexible data integration environment.

The third related research area is the development of **an open data integration system architecture** in a non-application specific infrastructure. Srivastava et al. (2006) and Balazinska et al. (2007) present general concepts in a systems architecture and data integration approach but there are no concrete conclusions as to how the final goal of establishing such an infrastructure could be achieved. A more technical approach for ad-hoc sensor networks is described by Riva & Borcea (2007), where the authors discuss challenges to making heterogeneous sensor measurements combinable through the creation of highly flexible middleware components. The method is application-motivated and thus very detailed as far as specific implementation details are concerned.

3. Common Scents measurement infrastructure

The *Common Scents* project aims at developing an interoperable open standards based infrastructure for providing fine-grained air quality data to allow users to assess environmental conditions instantaneously and intuitively. The goal is to provide citizens with unseen up-to-date information layers in order to support their short-term decisions. To achieve this vision, we utilise the CitySense sensor testbed and technologically build our system upon the *Live Geography* approach presented by Resch et al. (2009a). It should be stated that the term 'real-time' in our case is not defined by a pre-set numerical time

constant, but more by qualitative expressions such as ‘immediately’ or ‘ad-hoc’, i.e. information layers have to be created in a timely manner to serve application-specific purposes. (Resch et al., 2009b)

3.1 Design principles

In the conception of our technical infrastructure we accounted for different design principles (Service Oriented Architectures – SOA, modular software infrastructures etc.) to ensure flexibility, reusability and portability of the components and the overall infrastructure. Figure 1 shows the modular architecture and the standardised service interfaces that are used to connect the different components in the workflow.

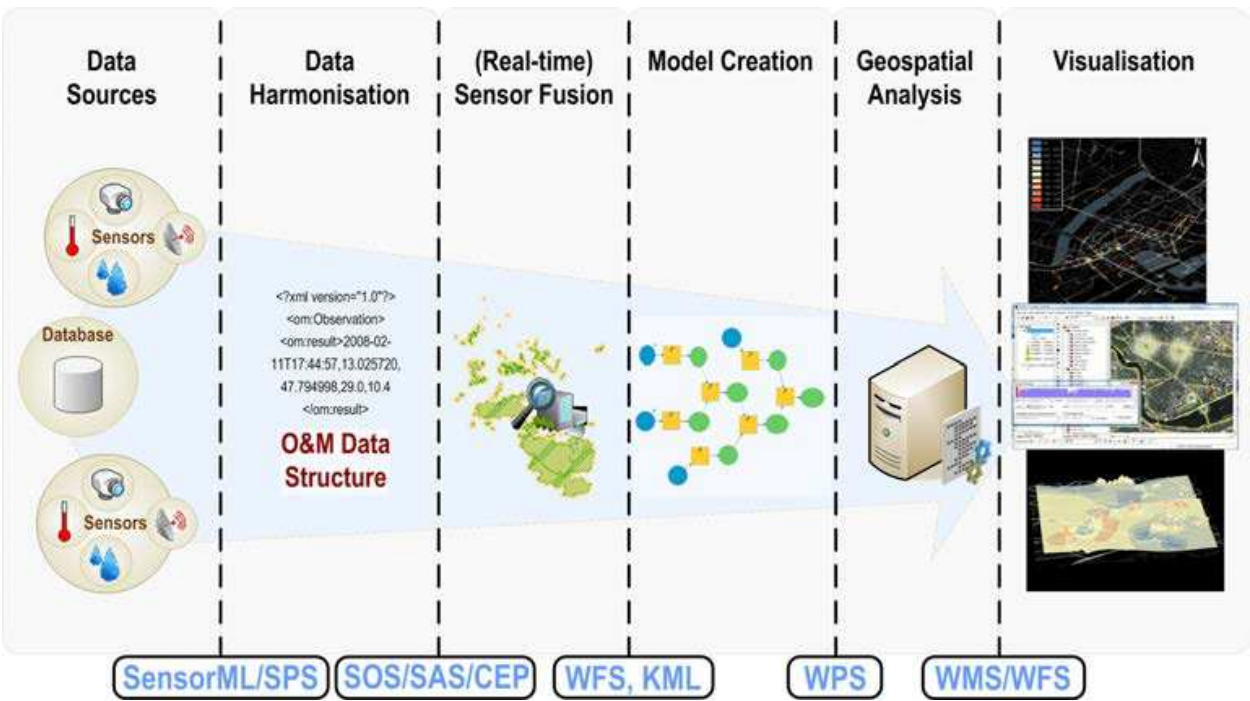


Fig. 1. Common Scents – Modular Standardised Infrastructure

According to principles of SOA and sustainable infrastructure development, we conceived data collection, processing and information provision architecture, which covers the whole process chain from sensor network development via measurement integration, data analysis and information visualisation, as shown in Figure 1. Thus, our approach builds the architectural bridge between domain-independent sensor network development and use case specific requirements for end user tailored information output for environmental monitoring purposes.

3.2 Standardised measurement infrastructure

The modules of the workflow shown in Figure 1 are separated by several interfaces, which are defined using open standards. The first central group of standards is subsumed under the term Sensor Web Enablement (SWE), an initiative by the OGC that aims to make sensors discoverable, query-able, and controllable over the Internet (Botts et al., 2007). Currently, the SWE family consists of seven standards comprising data models and service interfaces:

- *Sensor Model Language (SensorML)* – This standard provides an XML schema for defining the geometric, dynamic and observational characteristics of a sensor. Thus, SensorML assists in the discovery of different types of sensors, and supports the processing and analysis of the retrieved data, as well as the geo-location and tasking of sensors.
- *Observations & Measurements (O&M)* – O&M provides a description of sensor observations in the form of general models and XML encodings. This framework labels several terms for the measurements themselves as well as for the relationship between them. Measurement results are expressed as quantities, categories, temporal or geometrical values as well as arrays or composites of these.
- *Transducer Model Language (TML)* – Generally speaking, TML can be understood as O&M's pendant or streaming data by providing a method and message format describing how to interpret raw transducer data.
- *Sensor Observation Service (SOS)* – SOS provides a standardised web service interface allowing access to sensor observations and platform descriptions.
- *Sensor Planning Service (SPS)* – SPS offers an interface for planning an observation query. In effect, the service performs a feasibility check during the set up of a request for data from several sensors.
- *Sensor Alert Service (SAS)* – SAS can be seen as an event-processing engine whose purpose is to identify pre-defined events such as the particularities of sensor measurements, and then generate and send alerts in a standardised protocol format.
- *Web Notification Service (WNS)* – The Web Notification Service is responsible for delivering generated alerts to end-users by E-mail, over HTTP, or via SMS. Moreover, the standard provides an open interface for services, through which a client may exchange asynchronous messages with one or more other services.
- *Sensor Web Registry* – The registry serves to maintain metadata about sensors and their observations. In short, it contains information including sensor location, which phenomena they measure, and whether they are static or mobile. Currently, the OGC is pursuing a harmonisation approach to integrate the existing CS-W (Web Catalogue Service) into SWE by building profiles in ebRIM/ebXML (e-business Registry Information Model).

The functional connections between the SWE standards are illustrated in Figure 2.

It should be mentioned that the OGC is currently establishing the so-called *SWE Common* namespace specification, which aims at grouping elements that are used in more than one standard of the SWE family. In effect, this will minimise redundancy, and optimise re-usability and efficiency of the standards. SWE Common will mainly comprise very general elements such as counts, quantities, time elements or simple generic data representations.

More information on the Sensor Web Enablement initiative, the incorporated standards and the efforts to embed it into the OGC standard service development can be found on the OGC web site¹.

Aside from the SWE standard family, which is used throughout the sensor network process chain, other OGC standards are employed to build up the overall infrastructure. At first, the Web Processing Service (WPS) is used for integrating measurement data with thematic process models in order to generate contextual information layers. WPS (Schut, 2007) basically allows for the implementation and execution of pre-defined analysis processes

¹ <http://www.opengeospatial.org>

with dedicated input and output parameters. It supports synchronous and asynchronous data processing to enable sophisticated processing of large amounts of vector and raster data. The WPS standard has been discussed by Resch et al. (2010a) including issues such as input/output data definition, WPS profiling, asynchronous processing, and others.

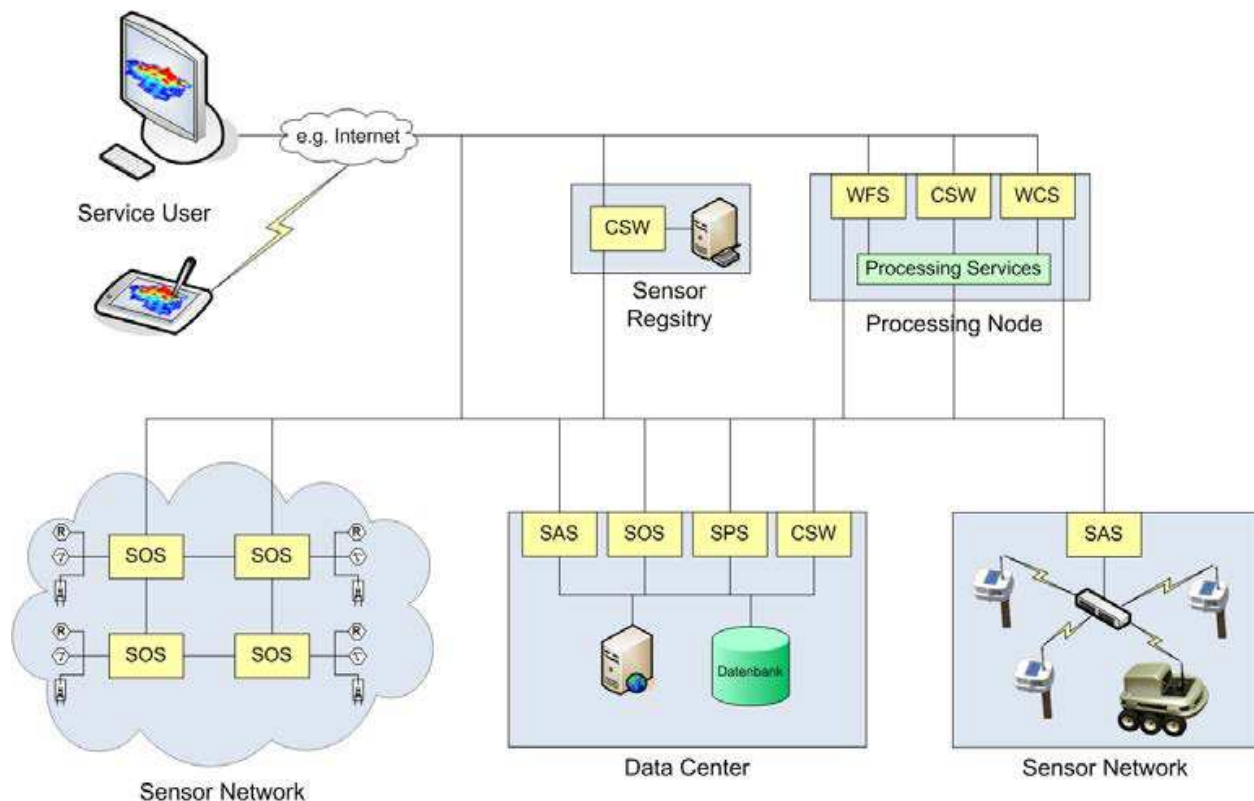


Fig. 2. Functional Connections Between the SWE Standards. (adapted from Botts et al., 2006)

The OGC developed a set of service interfaces for standardised data provision and visualisation dealing with various kinds of GIS data types. The Web Feature Service (WFS), the Web Map Service (WMS) and the Web Coverage Service (WCS) standards allow for access to geo-data such as vectors (point, line, polygon), raster images, and coverages (surface-like structures). More information about these standards and service implementations can be found on the OGC web site.

The essential benefit of using the OGC processing and data provision services mentioned above is the wide variety of standardised (GML, KML etc.) and custom output formats (GeoRSS, PDF etc.). This allows for the integration of the OGC service outputs into other processing, visualisation or decision support services including legacy COTS and open-source GIS analysis tools.

3.3 Data source: Geo-sensor web

In the Common Scents project, two pilot studies have been conducted. The first one used the *CitySense* sensing network (Murty et al., 2008) as the underlying sensing and data collection infrastructure. The main goal of the ongoing *CitySense* project is to build an urban sensor network to measure environmental parameters and is thus the data source for further data analysis. The project focuses on the development of a city-wide sensing system using an optimised network infrastructure. Currently, the network consists of 16 nodes deployed

around the city of Cambridge measuring different environmental parameters such as CO₂ concentrations, air temperature, wind speed and direction, or precipitation. The final CitySense deployment will comprise up to 100 sensing nodes to build the basis for pervasive urban monitoring. (Resch et al., 2009b)

Another pilot experiment, which aimed at the deployment of a mobile sensor network, was conducted in the city of Copenhagen, Denmark. Ten bicycle mounted sensors² were used to collect environmental data (CO, NO_x, noise, air temperature and relative humidity) together with time and the geographic location using GPS – from which velocity and acceleration can be calculated. In this experiment of ubiquitous mobile sensing, we used the Sensaris City Senspod³, a relatively low-cost sensor pod. The deployment in Copenhagen was a combined effort of the MIT SENSEable City Laboratory, and Københavns Kommune, Denmark.

To comply with the standardised infrastructure described in sub-section 3.1, we implemented several standardised services on top of these sensor networks, in accordance with the Live Geography approach (Resch et al., 2009a). For data access, we developed a Sensor Observation Service (SOS), which supplies measurement data in the standardised O&M format. It builds the O&M XML structure dynamically according to measured parameters and filter operations. To generate alerts e.g. in case of exceedance of a threshold, we implemented an XMPP (Extensible Messaging and Presence Protocol) based Sensor Alert Service (SAS). It is able to detect patterns and anomalies in the measurement data and generate alerts and trigger appropriate operations such as sending out an email or a text message, or to start a pre-defined GIS analysis operation.

3.4 Event-based alerting

Within the workflow described in sub-section 3.1, event recognition and processing happens in two different stages: 1.) at sensor level, Complex Event Processing (CEP) is used to detect errors in measurement values by applying different statistical operations such as standard deviations, spatial and temporal averaging, or outlier detection. Thus, it can be considered a mechanism for quality control and error prevention. To be able to detect condition changes in measurement values, we enhanced CEP and Event Stream Processing (ESP) techniques by the location parameter. Thus, these methods can also serve for the federal organisation of pre-defined geographical domain violations like geo-fences, and for tracing and analysing spatial patterns. 2.) after the data harmonisation process, CEP serves for spatio-temporal pattern recognition, anomaly detection, and alert generation in case of threshold exceedance.

Figure 3 shows the components of the CEP-based event processing component, which is built up in a modular structure.

Generally speaking, the event processing component serves as a connection between the data layer (sensor measurements) and the data analysis and data visualisation components, i.e. it prepares raw data in order to be process-able in the analysis and the visualisation layers. The first module is the data transportation, which connects different real-time and non-real-time data sources, i.e. it serves as an entry point into the event processing layer. Next, the retrieved data is passed on to the data transformation module, which prepares the data to be further processed. This 'processing' shall not be seen as data analysis, but more as data preparation. Basically, the transportation module converts the byte input stream to objects.

² <http://senseable.mit.edu/copenhagenwheel>

³ <http://www.sensaris.com>

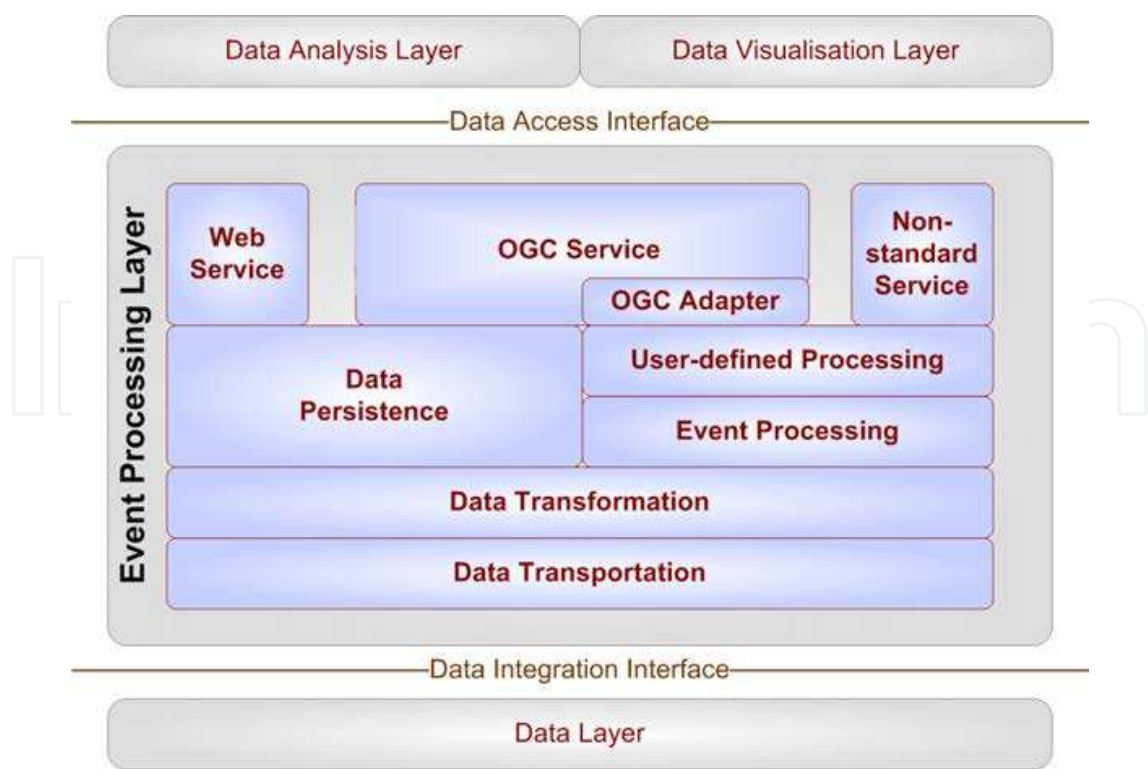


Fig. 3. CEP-based Event Processing Component Architecture

These objects can then be used by two higher-level components; firstly, by the data persistence component, which establishes a static data structure from the source data; secondly, by an event processing engine, which processes a real-time stream, identifies/selects events and pushes them to the user-defined processing module. The latter performs a kind of ‘event filtering’ and sends the resulting message to the service components.

One particularity, which shall be mentioned at this point, is the connection between the processing and the data persistence modules. The idea behind this functional link is that data, which have been prepared by the processing components, can either be pushed to the service components or they can be temporarily stored to be accessed by OGC services.

The two service-related components in Figure 3 (Web Service and Non-standard Service) serve as the direct interfaces to the data integration and data analysis layers. They offer the pre-processed raw data via a defined data structure, e.g. in a standardised output format such as GML, KML, geoTIFF etc. or in a custom output format.

For the OGC service component, all data are served over well-established open and standardised interfaces (OGC WFS, WMS and WCS). These XML web interfaces enable standardised data access and guarantee combinability of the various kinds of used data for further automated processing, as described in sub-section 3.2. In this way, pre-defined aggregation services can be implemented in the data analysis layer offering the results to a range of different users, i.e. platforms.

In addition to the standardised interfaces, also a non-standard service has to be created as existing OGC services don’t support push mechanisms per se. A longer term option will be to replace these non-standard interfaces by push-capable standard services. More detailed information about the event processing component can be found in Resch et al. (2010b).

3.5 Real-time sensor fusion

We are currently facing a drastic increase in the availability of geospatial real-time data sources, and this applies especially to rapid developments and price reduction in sensing technologies. To make use of this immense amount of data within environmental monitoring systems, real-time data integration mechanisms have to be developed, which harmonise and fuse the different kinds of data. Furthermore, these data have to be provided in standardised formats in order to allow interoperability and collaboration between different institutions and data providers.

Most current data integration systems make use of a temporary database to combine different kinds of raw data, as stated in section 2. This approach has two distinctive disadvantages. Firstly, it manifests data into a physical structure and thus severely limits real-time capabilities. Secondly, the laborious operation of creating and filling a database table adds another step in the overall workflow, which decreases performance and expands implementation complexity and costs.

To overcome these shortcomings, we implemented the real-time data integration component in a custom data store for the open-source server GeoServer. This solution offers two main advantages: at first, data are fused on-the-fly in a highly dynamic, fast and parallelised process. At second, GeoServer provides standardised WFS, WMS and WCS outputs, as described above, which allows for simple integration into analysis and visualisation software. More about implementation details can be found in Resch et al. (2009a).

4. Results of spatio-temporal data analysis

Using the sensor web deployments described in section 3, we implemented two spatio-temporal data analysis modules.

The first pilot deployment has been carried out in the course of the *Copenhagen Wheel* project. This project was unveiled in Copenhagen on 15 December 2009 as part of 15th Conference of the Parties during the 2009 United Nations Climate Change Conference meeting. The Copenhagen Wheel is capturing information about carbon monoxide (CO), NO_x (NO + NO₂), noise, ambient temperature, relative humidity in addition to position, velocity and acceleration.

The environmental sensors were originally intended to be placed within the hub of the bicycle wheel however due to logistical pressure they were placed on bicycles ridden by couriers in Copenhagen going about their normal daily routine. Thus the testing was essentially a proof-of-concept. Ten cycles were instrumented and tested over 2 December 2009. It is believed that this was the first time multiple mobile sensors had been used in the field with such a large variety of environmental sensors.

The analysis component, which processes the collected data, performs a spatial Inverse Distance Weighting (IDW) interpolation (for a comparison with Kriging interpolation, s. Zimmermann et al., 1999) on temperature measurements, which will be used in further research efforts for correlation operations with emission distribution or traffic emergence, and for the detection of urban heat islands.

Moreover, the processing module analyses the CO distribution throughout the city of Copenhagen. The basic CO map containing the GPS traces and the output of the interpolation process – a navigable 3D map – are shown in Figure 4.

The second geo-processing component uses ArcGIS's Tracking Analyst tool to perform spatio-temporal analysis on measurement data over a period of time. In order to achieve a coarse overview of pollutant variability, we used CO₂ data captured by the CitySense

network in Cambridge. This allows for correlating temporal measurement data fluctuation to traffic density, weather conditions or day-time related differences in a very flexible way. The lower left part of Figure 5 shows the temporal gradient of the measurement values. Running the time series then changes symbologies in the map on the right side accordingly in a dynamic manner in real-time.

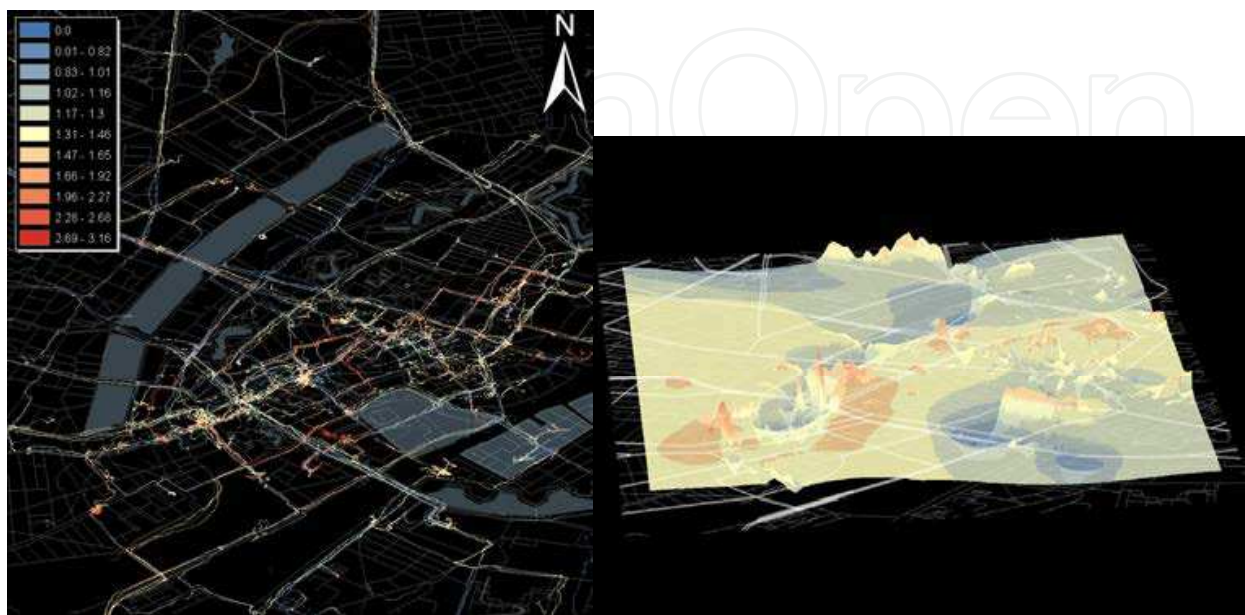


Fig. 4. Spatial Distribution of CO Values in the City of Copenhagen.

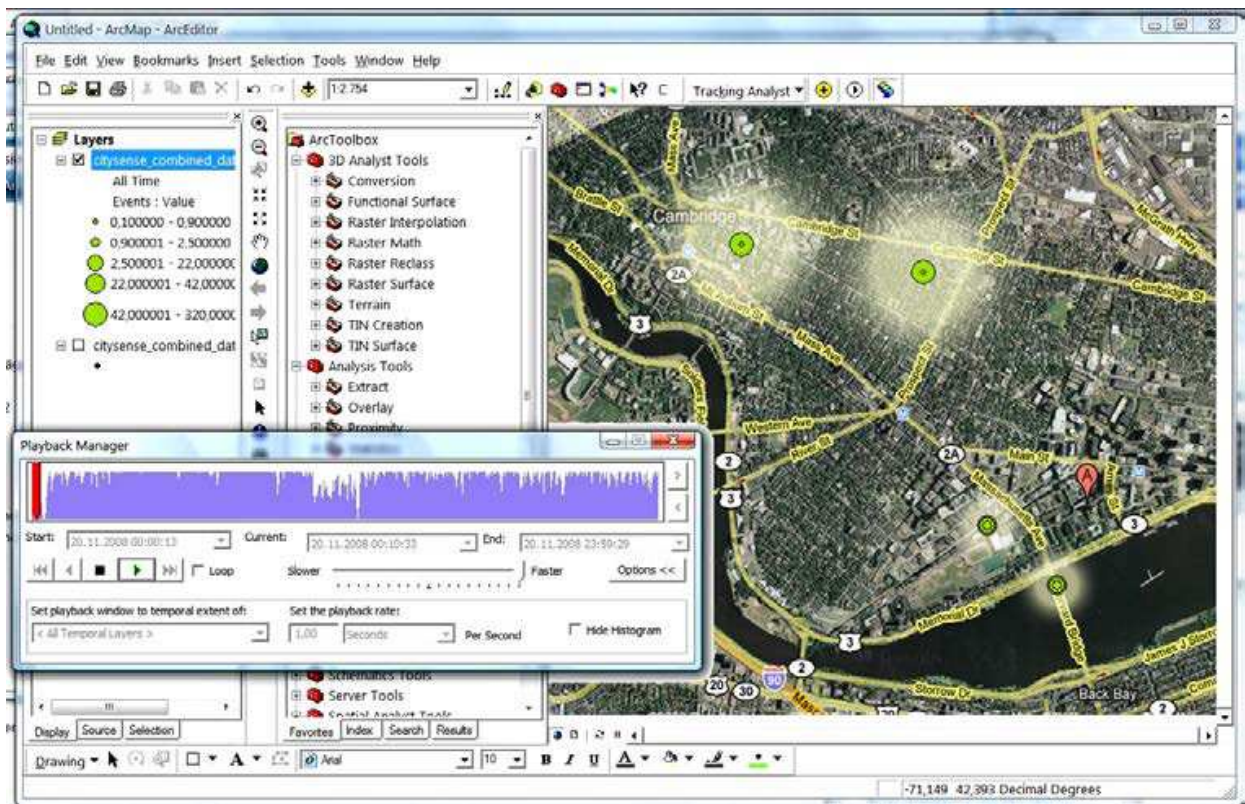


Fig. 5. Spatio-temporal CO₂ Data Analysis Using Tracking Analyst.

Figure 6 illustrates a time series representation of the measured parameters ambient temperature, CO, NO_x and noise. These measurements were taken in Copenhagen over a period of five hours on 2 December 2009. A first assessment shows that there are strong correlations between ambient temperature, CO and NO_x values.

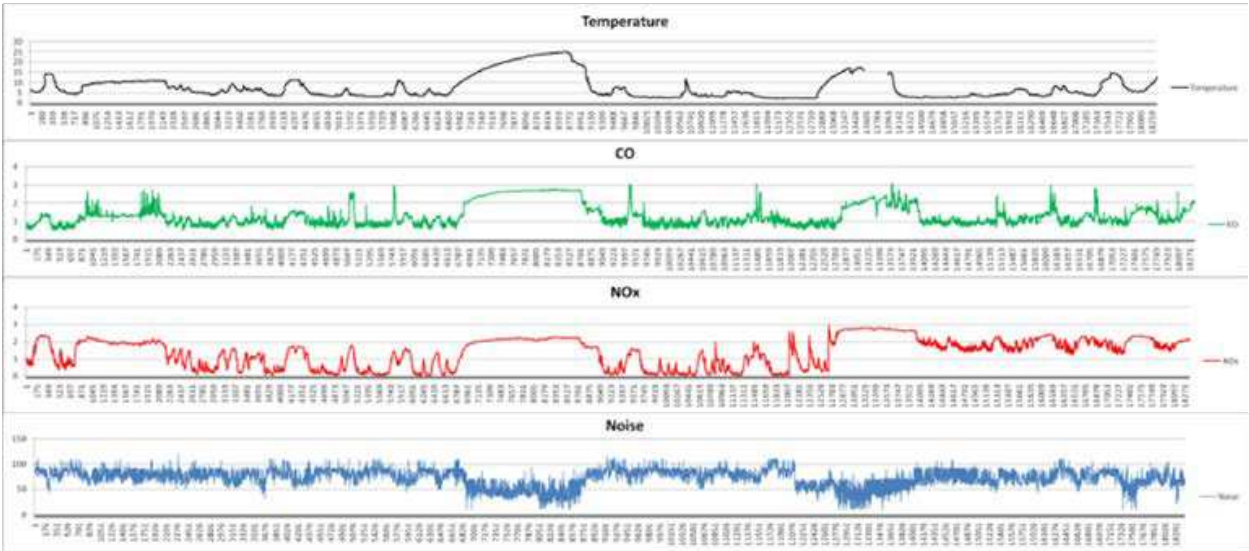


Fig. 6. Time Series Representation of Environmental Measurements.

Preliminary findings show that both CO and CO₂ are characterised by very high temporal and spatial fluctuations, which are induced by a variety of factors including temperature variability, time during the day, traffic emergence or ‘plant respiration’ – the fact that plants release major amounts of CO₂ over night. Also, CO is a measure of the efficiency of combustion in vehicles and may be used to reflect changing driving patterns and the sensitivity of air quality to larger scale environmental features such as the wind speeds over the city. However, the detailed interplay of these parameters still has to be investigated in a next step. Especially CO values measured in the Copenhagen pilot have to be normalised over humidity and temperature to perform further quantitative (absolute amounts) and qualitative (impact on public health) analysis.

5. Potential application areas

More than ten years ago, Al Gore articulated a vision of ‘Digital Earth’ as a multi-resolution, three-dimensional representation of the planet that would make it possible to find, visualise, and make sense of vast amounts of geo-referenced information on the physical and social environment (Gore 1998, for a comprehensive discussion see Craglia et al. 2008). Google Earth, NASA World Wind and other geo-browsers brought high resolution imagery to hundreds of millions of internet users and a major industry developed ways to explore data geographically, and visualise overlaid information provided by both the public and private sectors, as well as citizens who volunteer new data (Goodchild, 2007). Generally speaking, fine-grained urban sensing greatly enhances our knowledge of the environment by adding objective and non-visible data layers in real-time (Resch et al., 2008). In other words, these systems help us increase our capacity to observe and understand the city, and the impacts on and by society. This seems to be a very desirable state because more

accurate data about local air temperature, atmospheric humidity, gaseous and particulate air pollution, and traffic emissions can positively influence areas such as public health, traffic management or emergency response. Apart from this information enrichment, accurate sensor measurements also have a much broader influence: considering for example that 'air quality' is only a surrogate for the effects of pollutants on humans makes a fine-grained air quality map a very sensitive information layer, as discussed in section 4.

Within the Common Scents project, we focus on the use case of air quality monitoring for use in the public health sector. However, we designed the monitoring infrastructure in such a modular way that it is not bound to one single application area. Below, several practically motivated fields of real-world applications are described, which could use the same infrastructure presented in section 3.

Public Health has been asked to participate in policymaking on 'quality of life' issues increasingly over the past decade. The superimposing of the medical model to describe the impact of conditions that have traditionally been regarded as nuisances has created a great challenge, particularly in the field of environmental health.

One pollutant often used to serve as a proxy is NO_x , which technically represents various gaseous species comprised of oxygen and nitrogen molecules. Another indicator of near-roadway effects that has gained recent attention is ultrafine particulates (UFPs), particles that are less than 0.1 microns (100 nm) in diameter. Thus, air quality measurements of hazardous air pollutants can be widely associated with traffic (non-point sources). A pervasive sensor network could help capture measurements in high spatial and temporal resolution to take short-term measures (dynamically adapt traffic management or send out alerts to citizens in case of threshold exceedance). Also, it could support traditional long-term studies on the impact of certain pollutants on public health.

The use case of noise mapping has received a lot of attention recently. Many disputes within the research field emerge from noise impacts associated with construction, excavation or some other commercial or industrial enterprise. These disputes also arise from use of domestic landscaping equipment, like leaf blowers and snow blowers. The limits imposed by the city on noise generation are intended to assess the background noise levels. A source cannot be held responsible for noise levels that exceed the city's allowable limits if the ambient noise in that area already exceeds those limits. The development of noise 'maps' may not immediately result in satisfaction from aggrieved residents, but it can be used to consider the noise impact of future development and zoning policies. It may also contribute to efforts to reduce the number of cars travelling across the city by adding the noise impact dimension to the discussion. This is much more likely to be given full consideration if it can be demonstrated with highly resolved data maps, which can be generated in near real-time using the Common Scents infrastructure.

The urban heat island effect describes the contribution of the built environment to the ambient temperature within urban areas. While this is not likely to become a primary public health concern, it has great bearing on efforts to limit the loss of heating energy across the city. Different agencies have been established to work on a long-term strategy to reduce overall energy use (e.g. Cambridge Energy Alliance: <http://www.cambridgeenergyalliance.org>) and to encourage individual homeowners and building owners to evaluate their energy loss. It is quite possible that small changes in heat loss, as described through a detailed heat map of the city over time, could show progress towards energy efficiency in a materials way. This could be used both as an evaluation tool in tracking the city's progress, and as a means to engage the public in the energy goals of the community.

6. Conclusion

Ubiquitous and continuous environmental monitoring is an enormous challenge, and this is particularly true in the urban context, which poses very specific challenges as well technologically as socially and politically. In this chapter we discussed several of these issues, and outlined how our approach can meet future requirements for urban sensing.

The focus is to contribute to a 'complete' picture of a living city for decisions makers, planners and operators beyond locational analysis. This may be seen distinct from a number of citizen-centred sensor approaches and context-aware systems. While a number of people-centric pervasive sensing systems are notable successes (Campbell et al. 2006), most of these examples focus on localising people and objects in a defined environment to enable context aware applications. In such projects, the notion of sensing is confined to supporting location-based context-awareness. In our *Live Geography* approach a more general integrated sensing architecture to support the diversity of applications and hardware platforms has been developed.

Based on the Live Geography approach, we outlined the Common Scents concept, which tries to establish an interoperable, modular and flexible sensing and data analysis infrastructure, as opposed to hitherto monolithic sensor networks. To prove our system's portability, we did implementations in two different pilot deployments (Cambridge, MA US and Copenhagen, Denmark) using the same data integration and analysis infrastructure.

Further exploitation of this approach is planned for other cities. We see more future challenges in the socio-political domain rather in the technological development necessary. It becomes more and more obvious that a cross-disciplinary group of researchers and technologists needs to persistently interact with end users. Only then we may achieve a wide appreciation of sensing which is needed to support future civic, cultural, and community life in cities. In many parts of the world, notably Germany and some Western European countries, attempts to 'completely' map cities are very sensitive. Google faces great problems with its StreetView approach. An integrated Common Scents must provide a clearly recognisable benefit to the citizens in order to be appreciated by all societal groups. Public Health applications may have a good chance to get accepted although some of the capabilities, for instance the ability to measure remotely the conditions of people in real time, raise social concerns centred on privacy issues. Methods for sensor data fusion and designs for human-computer interfaces are both crucial for the full realisation of the potential of integrated and pervasive sensing.

We also believe that the impact of pervasive sensing in the city has to be carefully assessed. We found that e.g. providing very fine-grained information layers might on the one hand be a powerful decision support instrument, but on the other hand too detailed environmental information might also have negative effects. As the term 'air quality' is just a surrogate for more personal impacts such as life expectation or respiration diseases, this information could yield a very broad impact in various kinds of areas such as housing market, the insurance sector or urban planning in general.

As the Common Scents concept has been developed and implemented together with the Public Health Department of the City of Cambridge, MA US as concrete end users, we believe that our approach can respond to dedicated needs of the city management. Therefore, the longer-term goal is to enhance people's perception of their environment by adding unseen information layers and thus changing their short-term behaviour by providing real-time decision support.

7. Acknowledgement

The Common Scents project is a concerted effort between the Research Studio iSPACE, the MIT SENSEable City Lab, the City of Cambridge's Public Health Department and the Harvard University School of Engineering and Applied Sciences. We would like to thank all internal and external collaborators for making this project happen.

Several technical parts of this research have been funded through the European Commission in the course of the FP7 GENESIS project. Furthermore, the Austrian Ministry of Science and Research (BMWF) funded pieces of the efforts in the Research Studio iSPACE.

The research described in this project by one of the authors (REB) was funded in part by the Singapore National Research Foundation (NRF) through the Singapore-MIT Alliance for Research and Technology (SMART) Center for Environmental Sensing and Monitoring (CENSAM).

The Copenhagen Wheel team from the SENSEable City Laboratory, MIT is composed of Christine Outram (Project Leader), Rex Britter, Andrea Cassi, Xiaoji Chen, Jennifer Dunnam, Paula Echeverri, Myshkin Ingawale, Ari Kardasis, E Roon Kang, Sey Min, Assaf Biderman and Carlo Ratti. The courier cyclists were organized by Signe Gaarde in Copenhagen.

8. References

- Balazinska, M., Deshpande, A., Franklin, M.J., Gibbons, P.B., Gray, J., Hansen, M., Liebhold, M., Nath, S., Szalay, A., Tao, V. (2007) Data Management in the Worldwide Sensor Web. *IEEE Pervasive Computing*, vol. 6, no. 2, pp. 30-40, Apr-Jun, 2007.
- Botts, M., Robin, A., Davidson, J. and Simonis, I. (Eds.) (2006) OpenGIS Sensor Web Enablement Architecture Document. <http://www.opengeospatial.org>, OpenGIS Interoperability Project Report OGC 06-021r1, Version 1.0, 4 March 2006. (12 June 2011)
- Botts, M., Percivall, G., Reed, C., and Davidson, J. (Eds.) (2007) OGC Sensor Web Enablement: Overview and High Level Architecture. <http://www.opengeospatial.org>, OpenGIS White Paper OGC 07-165, Version 3, 28 December 2007. (17 June 2011)
- Campbell, A., Eisenman, S.B., Lane, N.D., Miluzzo and E., Peterson, R.A. (2006) People-Centric Urban Sensing. *Proceedings of the 2nd annual international Workshop on Wireless Internet*, Boston, 2006.
- Center for Coastal and Land-Margin Research (2009) CORIE. <http://www.ccalmr.org>, (14 June 2011)
- Goodchild, M. (2007). Citizens as sensors: The world of volunteered geography. *Geojournal*, 69: 211-221.
- Gore, A. (1998) The Digital Earth: Understanding Our Planet in the 21st Century. Speech given by Vice President Al Gore at the California Science Center, Los Angeles, California, on January 31, 1998, http://www.isde5.org/al_gore_speech.htm. (27 June 2011)
- Gross, N. (1999) 14: The Earth Will Don an Electronic Skin. <http://www.businessweek.com>, BusinessWeek Online, 30 August 1999. (20 May 2011)
- Harrie, L. (2004) Using Simultaneous Graphic Generalisation in a System for Real-Time Maps. *Papers of the ICA Workshop on Generalisation and Multiple Representation*, August 20-21, 2004, Leicester (electronic version available at <http://ica.ign.fr/Leicester/paper/Harrie-v2-ICAWorkshop.pdf>).

- Kansal, A., Nath, S., Liu, J. and Zhao, F. (2007) SenseWeb: An Infrastructure for Shared Sensing. *IEEE Multimedia*. vol. 14, no. 4, pp. 8-13, October-December 2007.
- Lehto, L. and Sarjakoski, L.T. (2005) Real-time Generalisation of XML-encoded Spatial Data for the Web and Mobile Devices. *International Journal of Geographical Information Science*, vol. 19, no. 8-9, pp. 957-973.
- Murty, R., Mainland, G., Rose, I., Chowdhury, A., Gosain, A., Bers, J. and Welsh, M. (2008) CitySense: A Vision for an Urban-Scale Wireless Networking Testbed. In *Proceedings of the 2008 IEEE International Conference on Technologies for Homeland Security*, Waltham, MA, May 2008.
- Nagel, D. (2003) Pervasive Sensing. *Proceedings of the SPIE*, vol. 4126, no. 71, doi:10.1117/12.407543, 2003.
- Nath, S., Liu, J. and Zhao, F. (2006) Challenges in Building a Portal for Sensors World-Wide. *First Workshop on World-Sensor-Web: Mobile Device Centric Sensory Networks and Applications (WSW'2006)*, Boulder CO, 31 October, 2006.
- National Oceanic and Atmospheric Administration (2011) nowCOAST: GIS Mapping Portal to Real-Time Environmental Observations and NOAA Forecasts. <http://nowcoast.noaa.gov>. (15 June 2011)
- Paulsen, H. and Riegger, U. (2006). SensorGIS - Geodaten in Echtzeit. In: *GIS-Business*, vol. 8/2006, pp. 17-19, Cologne.
- Paulsen, H. (2008) PermaSensorGIS - Real-time Permafrost Data. In: *Geoconnexion International Magazine*, vol. 02/2008.
- Rahm, E., Thor, A. and Aumüller, D. (2007) Dynamic Fusion of Web Data. *XSym 2007*, Vienna, Austria, pp.14-16.
- Resch, B., Calabrese, F., Ratti, C. and Biderman, A. (2008) An Approach Towards a Real-time Data Exchange Platform System Architecture. *Sixth Annual IEEE-IARIA International Conference on Pervasive Computing and Communications*, Hong Kong, 17-21 March 2008.
- Resch, B., Mittlboeck, M., Girardin, F., Britter, R. and Ratti, C. (2009a) Live Geography - Embedded Sensing for Standardised Urban Environmental Monitoring. *International Journal on Advances in Systems and Measurements*, 2(2&3), ISSN 1942-261x, pp. 156-167.
- Resch, B., Mittlboeck, M., Lipson, S., Welsh, M., Bers, J., Britter, R. and Ratti, C. (2009b) Urban Sensing Revisited - Common Scents: Towards Standardised Geo-sensor Networks for Public Health Monitoring in the City. In: *Proceedings of the 11th International Conference on Computers in Urban Planning and Urban Management - CUPUM2009*, Hong Kong, 16-18 June 2009.
- Resch, B., Sagl, G., Blaschke, T. and Mittlboeck, M. (2010a) Distributed Web-processing for Ubiquitous Information Services - OGC WPS Critically Revisited. In: *Proceedings of the 6th International Conference on Geographic Information Science (GIScience2010)*, Zurich, Switzerland, 14-17 September 2010.
- Resch, B., Lippautz, M. and Mittlboeck, M. (2010b) Pervasive Monitoring - A Standardised Sensor Web Approach for Intelligent Sensing Infrastructures. *Sensors - Special Issue 'Intelligent Sensors 2010'*, 10(12), 2010, pp. 11440-11467.
- Rittman, M. (2008) An Introduction to Real-Time Data Integration. <http://www.oracle.com/technology/pub/articles/rittman-odi.html>, 2008. (22 May 2011)

- Riva, O. and Borcea, C. (2007) The Urbanet Revolution: Sensor Power to the People!. IEEE Pervasive Computing, vol. 6, no. 2, pp. 41-49, Apr-Jun, 2007.
- Sarjakoski, T. et al. (2004) Geospatial Info-mobility Service by Real-time Data-integration and Generalisation. <http://gimodig.fgi.fi>. (22 June 2011)
- Schut, P. (ed.) (2007) Web Processing Service. OpenGIS Standard, version 1.0.0, OGC 05-007r7, 8 June 2007.
- Srivastava, M., Hansen, M., Burke, J., Parker, A., Reddy, S., Saurabh, G., Allman, M., Paxson, V. and Estrin D. (2006). Wireless Urban Sensing Systems. Technical Report 65, Center for Embedded Network Sensing, UCLA, April 2006.
- Sybase Inc. (2008) Real-Time Events Data Integration Software. <http://www.sybase.com/products/dataintegration/realtimeevents>. (07 July 2011)
- University of Oklahoma (2009) OKCnet. <http://okc.mesonet.org>. (12 March 2011)
- Xu, N. (2004) A Survey of Sensor Network Applications. <http://courses.cs.tamu.edu>, Computer Science Department, University of Southern California, 2004. (10 July 2011)
- Zimmerman, D., Pavlik, C., Ruggles, C. and Armstrong, M.P. (1999) An Experimental Comparison of Ordinary and Universal Kriging and Inverse Distance Weighting. *Mathematical Geology*, 31(4), pp. 375-390.

IntechOpen



Environmental Monitoring

Edited by Dr Ema Ekundayo

ISBN 978-953-307-724-6

Hard cover, 528 pages

Publisher InTech

Published online 04, November, 2011

Published in print edition November, 2011

"Environmental Monitoring" is a book designed by InTech - Open Access Publisher in collaboration with scientists and researchers from all over the world. The book is designed to present recent research advances and developments in the field of environmental monitoring to a global audience of scientists, researchers, environmental educators, administrators, managers, technicians, students, environmental enthusiasts and the general public. The book consists of a series of sections and chapters addressing topics like the monitoring of heavy metal contaminants in varied environments, biological monitoring/ecotoxicological studies; and the use of wireless sensor networks/Geosensor webs in environmental monitoring.

How to reference

In order to correctly reference this scholarly work, feel free to copy and paste the following:

Bernd Resch, Rex Britter, Christine Outram, Xiaoji Chen and Carlo Ratti (2011). Standardised Geo-Sensor Webs for Integrated Urban Air Quality Monitoring, Environmental Monitoring, Dr Ema Ekundayo (Ed.), ISBN: 978-953-307-724-6, InTech, Available from: <http://www.intechopen.com/books/environmental-monitoring/standardised-geo-sensor-webs-for-integrated-urban-air-quality-monitoring>

INTeCH
open science | open minds

InTech Europe

University Campus STeP Ri
Slavka Krautzeka 83/A
51000 Rijeka, Croatia
Phone: +385 (51) 770 447
Fax: +385 (51) 686 166
www.intechopen.com

InTech China

Unit 405, Office Block, Hotel Equatorial Shanghai
No.65, Yan An Road (West), Shanghai, 200040, China
中国上海市延安西路65号上海国际贵都大饭店办公楼405单元
Phone: +86-21-62489820
Fax: +86-21-62489821

© 2011 The Author(s). Licensee IntechOpen. This is an open access article distributed under the terms of the [Creative Commons Attribution 3.0 License](https://creativecommons.org/licenses/by/3.0/), which permits unrestricted use, distribution, and reproduction in any medium, provided the original work is properly cited.

IntechOpen

IntechOpen