

We are IntechOpen, the world's leading publisher of Open Access books Built by scientists, for scientists

6,900

Open access books available

186,000

International authors and editors

200M

Downloads

Our authors are among the

154

Countries delivered to

TOP 1%

most cited scientists

12.2%

Contributors from top 500 universities



WEB OF SCIENCE™

Selection of our books indexed in the Book Citation Index
in Web of Science™ Core Collection (BKCI)

Interested in publishing with us?
Contact book.department@intechopen.com

Numbers displayed above are based on latest data collected.
For more information visit www.intechopen.com



Endogenous Experimental Glioma Model, Links Between Glioma Stem Cells and Angiogenesis

Susana Bulnes¹, Harkaitz Bengoetxea², Naiara Ortuzar²,
Enrike G. Argandoña³ and José Vicente Lafuente²

¹Laboratory of Clinical and Experimental Neuroscience (LaNCE),
Department of Nursing I, University of the Basque Country, Leioa

²Laboratory of Clinical and Experimental Neuroscience (LaNCE),
Department of Neuroscience, University of the Basque Country, Leioa,

³Unit of Anatomy, Department of Medicine, University of Fribourg, Fribourg,
^{1,2}Spain
³Switzerland

1. Introduction

Glioblastomas (GBM) are the most malignant solid tumours (grade IV) of CNS. They are glial lineage neoplasias with a high proliferative and invasive capacity, reaching to occupy an entire lobe of the brain (Kleihues et al., 2007). According with their genesis, they can be differentiated between primary and secondary glioblastoma. The primary is the most common glioblastoma. This is a new generated tumour after a brief medical history (three months), with no evidence of a less malignant lesion. On the other hand, secondary glioblastoma develops from diffuse astrocytoma, anaplastic astrocytoma or oligodendroglioma and malignant progression. Its development time is about five years. It is thought that both types of glioblastomas may be generated from neoplastic cells with characteristic of stem cells (Ohgaki & Kleihues, 2009). In addition, these cancer stem cells called “glioma stem cells” (GSCs) may be the responsible for glioma recurrences due to chemo-and radio resistance (Bao et al., 2006; Rich, 2007). Glioma stem cells (GSCs) are a subpopulation of neoplastic cells identified in glioma sharing properties with neural stem cells (self-renewal, high proliferation rate, undifferentiating, and neurospheres conformation) and the capacity for leading the tumourigenesis and tumour malignancy. The proliferation and the invasion into adjacent normal parenchyma have been attributed to glioma stem cells as well. Indeed, they were related to the angiogenesis process needed for the growth and survival of the neoplasia.

The microvascular network in gliomas has to get adapt to metabolic tissue requirements (Folkman, 2000). When the vascular network cannot satisfy cell requirements (Oxygen pressure of 5-10 mm Hg) tissue hypoxia occurs. This situation triggers the synthesis of pro-angiogenic factors as matrix metalloprotease (MMP-2), angiopoietin-1, phosphoglycerate kinase (PGK), erythropoietin (EPO), and vascular endothelial growth factor (VEGF)-A (Fong, 2008).

Vascular endothelial growth factor (VEGF) is a major regulator of tumour angiogenesis (Bulnes & Lafuente, 2007; Lafuente et al., 1999; Machein & Plate, 2004; Marti et al., 2000).

VEGF acts as mitogen, survival, antiapoptotic and vascular permeability factor (VPF) for the endothelial cells (Dvorak, 2006). The increase of this pro-angiogenic factor, secreted either by neoplastic cells or by cells of the tumour microenvironment, induces the start of angiogenesis, the called “angiogenic switch” (Bergers & Benjamin, 2003). This event results in the transition from avascularised hyperplasia to outgrowing vascularised tumour and eventually to malignant progression. It has been shown in human glioma biopsies that VEGF overexpression correlates directly to proliferation, vascularization and degree of malignancy, and therefore inversely to prognosis (Ke et al., 2000; Lafuente et al., 1999; Plate, 1999). The synthesis of VEGF is mediated by the Hypoxia-Inducible Factor (HIF-1), a critical step for the formation of new blood vessels and for the adaptation of microenvironment to the growth of gliomas (Jin et al., 2000; Marti et al., 2000; Semenza, 2003). Recent researches have reported that glioma stem cells play a pivotal role inducing the angiogenesis via HIF-1/VEGF (Bao et al., 2006). By the other hand, hypoxia has been related to clones selection of tumour cells. These clones adapted to the tumour microenvironment have acquired the phenotype of tumour stem cell with increased proliferative and infiltrative capacity (Heddlestone et al., 2009; Li et al., 2009). Invasion of adjacent normal parenchyma has been attributed to glioma stem cells as well.

Due to these evidences, GSCs are currently being considered as a potential therapeutic target of the tumours. Recent studies have been focused on the identification of GSCs. In human glioblastomas they have been identified using CD133 marker (Ignatova et al., 2002). However, little is known about their genesis during glioma progression, especially during the early stages.

Some authors have previously reported the induction of glial tumour in rats by transplacental administration of the carcinogen ethylnitrosourea (ENU) as a suitable method for studying the natural development of glioma (Bulnes-Sesma et al., 2006; Zook et al., 2000). In addition to this, it has been reported that ENU glioma model is a representative model for human glioma due to its location and also to its similar cellular, molecular and genetic alterations (Kokkinakis et al., 2004). Our experience with this model has proven to be useful to study many aspects of tumorigenesis and neoangiogenesis. In previous researches we reported the progression of tumour malignancy associated with vascular structural alterations and blood brain barrier (BBB) disturbances (Bulnes & Lafuente, 2007; Bulnes et al., 2009). ENU induced glioma permitted us to identify tumour development stages following microvascular changes. In addition, it was possible to study the angiogenesis process. Recently, we have used this model to study the relationship between glioma stem cells and angiogenesis process during the neoplasia development.

Many evidences corroborate the hypothesis that “glioma stem cells” have a close relationship with angiogenesis process, intratumour hypoxia and neoplastic microvascular network. In this chapter we centred to show this relationship from early to advanced stages of glioma using ENU-model.

2. Endogenous glioma model

Over the years, different methods have been employed to induce experimental tumours in the Central Nervous System of animals. Exposure to radiation, inoculation of carcinogenic virus, xenografts of tumour cell lines or tumour fragments in nude rats or mice, administration of chemical substances (Bulnes-Sesma et al., 2006) and genetically engineered mouse models have been used to replicate CNS tumours. The administration of chemical

substances as nitroso compounds is one of the most commonly-used methods to induce experimental CNS neoplasm. There is strong experimental data showing that nitrosamides (R1NNO-COR2), a type of N-nitroso compounds (NOC), are potent neuro-carcinogens when administered transplacentally. N-nitrosoureas MNU and ENU (a class of nitrosamides) have been demonstrated to be carcinogenic in animals, and particularly related to the development of CNS tumours. N-ethyl-N-nitrosourea (ENU) acts alkylating the O₆ in the guanine (G:C→T:A transition) and the O₂ in the thymine (T:A→A:T transversion). The accumulation of these successive DNA mutations seems to be responsible of the neurooncogenic effect of ENU (Bulnes-Sesma et al., 2006; O'Neill, 2000). Recently it has been reported that ENU exposure affects primitive neuroepithelial cells of the subventricular plate (SVZ) and germinative zone (VZ). ENU prenatal exposure affects the differentiation of these cells generating glial lineage tumours (Burger, 1988; Vaquero et al., 1994; Yoshimura et al., 1998) and its exposure in adult affects the neurogenesis of the SVZ (Capilla-Gonzalez et al., 2010). In previous studies we found that gliomas induced in offspring were similar to the human gliomas (Kokkinakis et al., 2004). Therefore, ENU brain induced tumours have allowed the study of several aspects of glioma behaviour, for example, microvascular organization (Schlageter et al., 1999; Yoshimura et al., 1998); neoplastic cell dedifferentiation (Jang et al., 2004); gene mutations (Bielas & Heddle, 2000; O'Neil, 2000); microcirculation and angiogenesis process (Bulnes & Lafuente, 2007; Bulnes et al., 2009) or experimental therapeutic agents (Kish et al., 2001).

In our model, the glioma induction was performed by prenatal exposure of Sprague Dawley rats to ENU. Briefly, pregnancy rats, on the 15th day of gestation, were given a single i.p. injection of 80 mg of ENU/kg body weight (Bulnes et al., 2009; Bulnes et al., 2010). Offspring rats exposed to ENU were reared in standard laboratory conditions and the study was performed from 5 months to one year of age. The identification of ENU-Gliomas was performed by T2-w and postcontrast T1-weighted NMR images and by histopathology diagnosis from H&E staining and immunophenotypic study as previously described (Bulnes & Lafuente 2007) (Figure 1, 2). Following our results, ENU-glioma starts from the fifth month of offspring rat age and becomes GBM at 10 months of age (Bulnes-Sesma et al., 2006). ENU-glioma starts as cellular proliferation growing near ventricles in association with subcortical white matter. Over 6 months of extrauterine life, this tumour proliferation become nodular and rats display neurological signs (Figure 1). Around one year they grow as a GBM toward the contralateral hemisphere (Figure 2). Following our findings, we have identified three stages of ENU-glioma development: initial, intermediate and advanced. The advanced stage corresponds to anaplastic oligodendroglioma or glioblastoma (GBM) similar to the human. ENU-GBM may reach to infiltrate whole cerebral hemisphere, showing malignant histopathological features such as: high tissue heterogeneity, aberrant angioarchitecture, macro-haemorrhages, macrocysts or palisade necrosis (Klehiues et al., 2007). Thanks to this model we could isolate early glioma stages, which is impossible to carry out in human brain.

3. Stem cells and cancer stem cells

Stem cells are functionally defined as self-renewing and multipotent cells that exhibit multilineage differentiation (Till & McCulloch, 2011). Nowadays they have been proposed to be an important tool in regenerative therapy being used to regenerate tissue in many diseases like heart stroke, neurodegenerative diseases, etc (Nadig, 2009). However, in oncology and especially in cerebral gliomas, the presence of the stem cells has been related

to a poor prognosis. Recent investigations in glioblastomas have reported that these cancer stem cells called glioma stem cells (GSCs) have tumourigenic capacities like tumour malignant process, peripheral tissue infiltration and angiogenesis induction (Hadjipanayis & Van Meir, 2009; Rich, 2007).

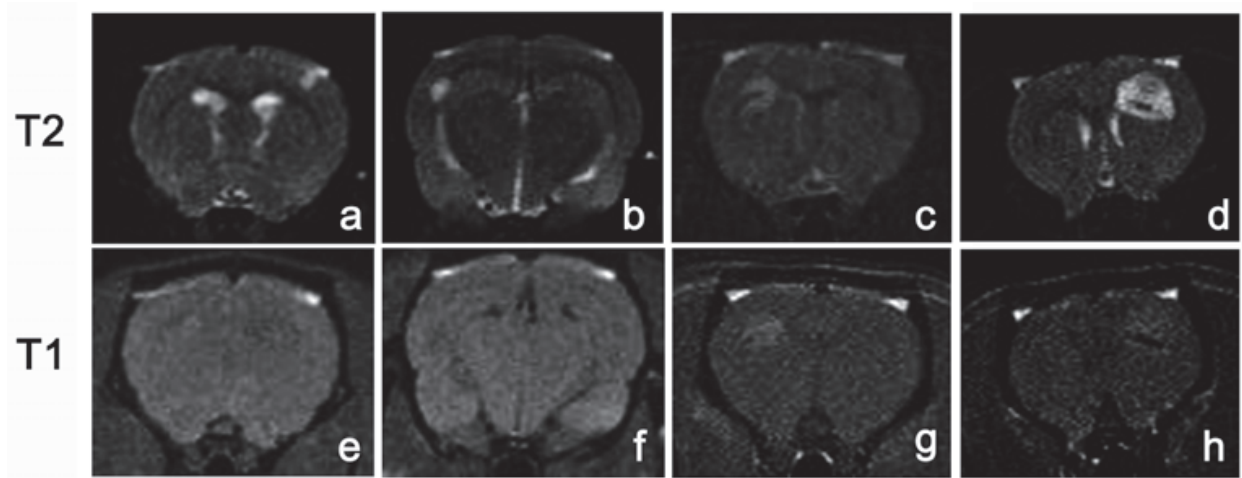


Fig. 1. Coronal sections of rat brains displaying ENU-glioma showed by MRI on T2-w and T1-w after injection of gadolinium. a, b) Small neoplastic mass growing on the cerebral cortex with an homogeneous hyperintense signal on T2-w images. These neoplastic masses correspond to initial stage of ENU-glioma. e, f) Both masses display an isointense signal on T1-w. c, d) ENU-glioma tumour with nodular shape showed on T2-w hyperintense signal that represents intermediate stage. g, h) At this stage there is a gadolinium contrast enhancement observed as homogeneous soft hyperintense signal on T1-w image.

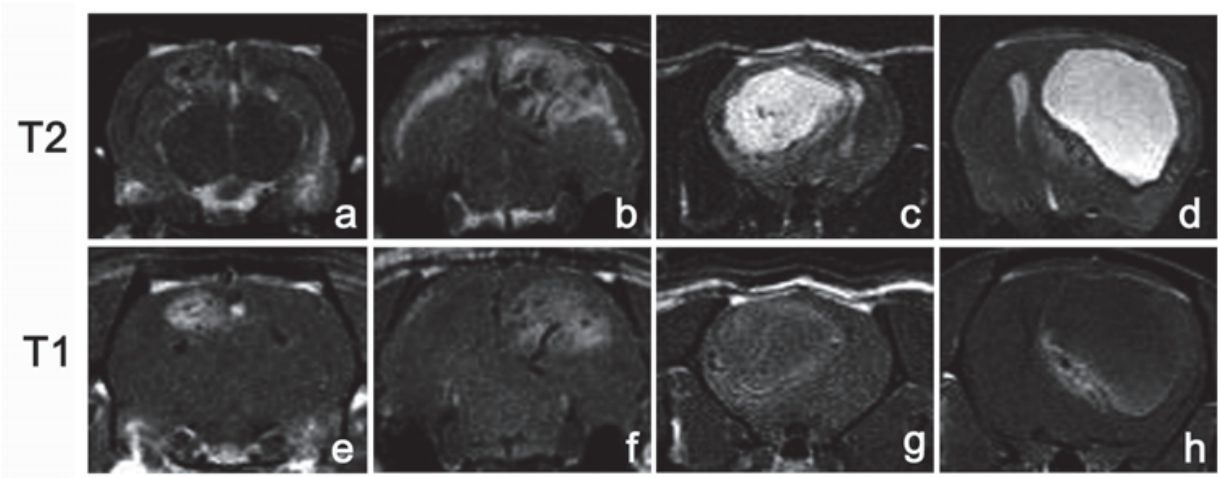


Fig. 2. Coronal sections of rat brains with ENU-glioma of advanced stage showed by MRI on T2-w and T1-w after injection of gadolinium. All of these anaplastic gliomas display heterogeneous hyperintense signal on T2 (a-d) and on T1-w (e-h). This heterogeneity is due to the presence of histopathology features of malignity. c-d) ENU-GBMs high-proliferative covering a whole cerebral hemisphere. The T2-w images reveal an intratumour hyperintense signal corresponding with intratumour oedema or macrocysts. g-h). Gadolinium enhancement of this T1-w image adopts a rim shape bordering the neoplastic mass. This rim represents the microvascular proliferation with dysfunction of Blood Brain Barrier.

In the middle of the 60s, Altman and Das reported the first evidences about stem cells in adult brain. They observed stem cells in the hippocampus and olfactory bulb of rats, and it supposed the first sign of division of stem cells. Later on they were called Neural Stem Cells (NSCs). NSCs were considered the unique population of Central Nervous System cells characterized by self-renewal and multilineage differentiation properties (Muller et al., 2006). They can form neurospheres (Reynolds & Weiss, 1992) and differentiate in vitro into the three neuroectodermal lineages astrocytes, oligodendrocytes and neurons (Alvarez-Buylla & Garcia-Verdugo, 2002). Furthermore, when they are transplanted in vivo in the cerebellum, they can generate neurons and glial cells (Lee et al., 2005). Also, after transplantation into nude mice they can differentiate into neuroblasts (Tamaki et al., 2002). NSCs reside in the germinal layers of the developing brain, initially in the early neuroepithelium, later in the ventricular (VZ) and subventricular zone (SVZ) during embryogenesis (Götz & Huttner, 2005). In adult brain, three areas are supposed to harbour neural stem cells: dentate gyrus of hippocampus, SVZ (Doetsch et al., 1999; Eriksson et al., 1998) and the fibers connecting olfactory bulb to lateral ventricle (Lois & Alvarez-Buylla, 1994; Whitman & Greer, 2009). In recent times, they were also isolated in the subcortical white matter (Nunes et al., 2003).

In the 1960s, evidence emerged supporting the presence of stem cells in tumours. Bergsagel and Valeriote (1968) showed that only certain cells within a tumour had the capacity to generate a new tumour; they termed these cells "tumour stem cells". After this, tumour stem cells were identified in breast tumour (Al-Hajj et al., 2003), pancreatic tumour (Esposito et al., 2002) etc.

The first concept of cancer stem cell, later on also called tumour initiating cells, appeared in the beginning of the 90s. Bonnet and Dick (1977) describe how some cells, isolated from leukaemia patient's blood, had proliferation and differentiation capacities in vivo. Fan et al. (2007) described cancer stem cells as the cellular subpopulation capable of tumour regeneration within a permissive environment. Rich and collaborators reported that cancer stem cells have tumorigenic, infiltration and angiogenesis properties as well as radio/chemo-resistance (Rich, 2007; Hadjipanayis & Van Meir, 2009).

The relation between stem cells and cancer stem cells was studied. The results explained that both cellular types share the previously mentioned characteristics, as well as many cell signalling pathways as oncogene bcl-2, Sonic hedgehog (Shh) and Wnt signalling cascade (Reya et al., 2001). Both types of stem cells also share common markers like CD133, Nestin (Dahlstrand et al., 1992) and transcription factor Sox2 (Gangemi et al., 2009). However, there are differences between stem cells and cancer stem cells, such as expression of different markers, chromosomal alterations and tumorigenic capacity. Holland et al. (2000) published that cancer stem cells could develop from modified neural stem cells. They have been described many pathways that can lead to cancer stem cell formation like Notch (Takebe & Ivy 2010), Akt (Germano et al., 2010) activation or p53 pathway alteration.

3.1 Glioma stem cells (GSCs)

Dahlstrand et al. (1992) identified a cancer stem cells subtype inside glial lineage brain tumours which were called Glioma Stem Cells (GSCs). These GSCs may be responsible for maintenance of the entire tumour and also they have the potential, when injected in immunodeficient mice, to generate gliomas similar to the original tumours (Heddleston et al., 2009).

GSCs indeed share properties of somatic or embryonic stem cells (high proliferation rate, undifferentiating, formation of neurospheres) are chemo- and radio resistant (Bao et al., 2006, Rich, 2007). Their radiotherapy resistance may be thanks to a more efficient DNA repair mechanism and protein kinases phosphorylation Chk1 and Chk2 (Bao et al., 2006). The resistance to chemotherapeutic drugs is through membrane transporters that pump the drugs outside the cell (Donnenberg & Donnenberg, 2005).

The first GSCs identification was found in the tumour advanced stage corresponding with human-GBM (Ignatova et al., 2000). However, the first moment of GSCs expression remains unknown, as well as their role in early stages of tumour development. It is very important to identify and explain GSCs apparition in early glioma stages to research about future tumour therapy.

The discovery of GSCs in gliomas involved the creation of a new glioma-genesis hypothesis called “hierarchical hypothesis”. Before GSCs discovery, glioma development was explained by the “stochastic theory”. Stochastic theory is based on all neoplastic cells are clones from a single undifferentiated cell and they have the same genetic alterations (Hadjipanayis & Van Meir, 2009). Nowadays the “hierarchical theory” explains that only a few neoplastic cells can adapt to the tumour environment and are able to start the tumorigenic process. Even though the low proliferation of GSCs, they guide the tumour growth giving rise to more mature cells with limited proliferation capacity (Shen et al., 2008).

After the glioma stem cells finding, the research about glioma development has been centred in the identification of them. So far markers as CD133/Prominin-1, presents in glioma stem cells (Dell'Albani, 2008), Nestin, a protein found in neural stem cells in SVZ and other markers of neuroepithelial stem cells (Jang et al., 2004) including Musashi-1, Sox-2, GFAP, Map-2, Neural-tubulin, Neurofilament O4 and Noggin were used in order to identify tumour stem cells. But the lack of a specific marker makes it very difficult to identify (Hadjipanayis & Van Meir, 2009; Li et al., 2009).

Nestin is an intermediate filament protein typical for neural precursor cells. It has been extensively used as a marker for neural stem cells. It is expressed in primitive neuroepithelial cells of all regions of CNS during the development. In adult its expression is restricted to the ventricular wall (SVZ) and the central canal. In pathological conditions like brain trauma, CNS ischemia, neurotoxicity, neoplastic transformation and in response to cellular stress, the nestin over-expression was showed (Holmin et al., 1997, Jang et al., 2004). In primary malignant tumours of CNS high amounts of cells positive for Nestin have been reported. Nestin has been described as a marker of GSCs in astroglial tumours (Singh et al., 2003), indicating undifferentiating and malignance degree (Schiffer et al., 2010), but it is not specific for glioma stem cells (Hadjipanayis & Van Meir, 2009). Indeed, Nestin expression has been described to appear since the first stages in glioma models (Jang et al., 2004).

CD133 (prominin-1) was the first identified member of the prominin family of pentaspan membrane proteins which acts as a marker of hematopoietic progenitor cells. It is a cell surface marker used for the identification and isolation of stem/progenitor cells in several tissues, for instance, endothelium, brain, bone marrow, liver, prostate, pancreas and foreskin (Mizrak et al., 2008). CD133 was originally described as an hematopoietic stem cell marker and was subsequently related to number of progenitor cells including neuroepithelium (Corbeil et al., 2000) as well as cancer stem cells in various tumours such as prostate and

colon cancer (Cheng et al., 2009; Collins et al., 2005; O'Brien et al., 2007). In human glioblastoma, CD133 expression has been associated to GSCs and bad prognosis of the tumour (Germano et al., 2010).

4. Tumour angiogenesis

Gliomas proliferate in the brain, a privileged organ from the point of view of blood supply. The exchange of metabolites between blood and cerebral tissue occurs essentially in the brain capillaries. The diameter of brain capillaries in the adult human is between 5 and 7 microns. These microvessels feed to the cells that are 10-20 microns away. Although the distance between cells and microvessels is lesser than 20 μm , the growth and survival of the gliomas depend on vascular remodelling and angiogenesis (Folkman, 2006). Along the early stages of small gliomas the metabolic demand is supplied by the vast microvascular network but when the metabolic supply has been exceeded, new formation of vessels becomes necessary (Carmeliet & Jain, 2000; Yancopoulos et al., 2000). The genesis of the new vessels from pre-existing ones is called angiogenesis in opposite to vasculogenesis refereed to the formation of vessels from hemopoietic niches (Carmeliet, 2003; Risau & Falmme 1995; Risau, 1997).

Angiogenesis is a complex process that requires proteolytic and mitogenic activity of endothelial cells and interaction of these with the extracellular matrix molecules and cells of peri-endothelial support cells (pericytes and smooth muscle cells). Many molecules and pathways are involved in this process, such as VEGF, its receptors VEGFR-1 and VEGFR-2, the endothelial receptor tyrosine kinase tie-1 and tie-2 and the angiopoietin ligands 1 and 2. Many other molecules as PDGF and TGF- β , integrin receptors, are very important (Millauer et al., 1993; Neufeld et al., 1999).

Angiogenesis requires some angiogenic stimulus, such as hypoxia, new metabolic requirements or tumour growth to start. Intratumour hypoxia occurs at the time when there is an imbalance between supply and demand oxygen due to the irregular and chaotic blood flow (Jensen, 2006). The relative tissue hypoxia triggers the production of hypoxia inducible factor-1 α , upregulating the expression of VEGF. In addition to this, it was reported that hypoxia plays a fundamental role in the induction of cell phenotype neoplastic to the undifferentiated state of GSCs. According to recent research, hypoxia selects tumour cell clones that have adapted to the tumour microenvironment and have acquired the phenotype tumour stem cell, with its capabilities of proliferation and infiltration (Heddlestone et al., 2009; Li et al., 2009).

Heddlestone et al. (2009) observed how in cultures of human glioma neoplastic cells exposed to hypoxia reverted to a state of tumour stem cells. Griguer et al. (2008) related the appearance of CD133 + cells with oxygen stress in gliomas. On the other hand, it was observed a decrease in the expression of CD133 when reverted to conditions of normoxia. Furthermore, studies of human GBM have described the relationship between the gradient of intratumour oxygen and the appearance of the phenotype tumour stem cell (Pistollato et al., 2010). As above, only a cluster of neoplastic cells resists to the conditions of hypoxia and intratumoural ischemia. This group of cells may be stem cell precursors, and after adapting to the new microenvironment, are transformed to GSCs.

4.1 Vascular endothelial growth factor (VEGF)

Vascular endothelial growth factor (VEGF) is a major regulator of angiogenesis in development (Bengoetxea et al., 2008; Ferrara et al., 2003; Ment et al., 1997) and pathological

disease (Bulnes & Lafuente, 2007; Lafuente et al., 1999; Marti et al., 2000; Plate, 1992). However, the role of VEGF in nervous tissue is even more extensive. Previous studies showed that VEGF also has strong neuroprotective, neurotrophic and neurogenic properties (Jin et al., 2002; Ortuzar et al., 2011; Rosenstein & Krum, 2004; Storkebaum et al., 2004).

Although the synthesis of this proangiogenic cytokine is associated to tumour cells and endothelial cells, it has been described in others, such as: neurons, astrocytes, pericytes, smooth muscle cells, macrophages, lymphoid cells, platelets and fibroblasts (Zagzag et al., 2000). The VEGF family consists of five different homologous factors, VEGF-A, VEGF-B, VEGF-C, VEGF-D and placental growth factor (PlGF) (Ferrara et al., 2003). VEGF-A (VEGF) is the predominant form and is a hypoxia-inducible 45 KDa homodimeric glycoprotein.

VEGF-A acts as mitogen, survival and antiapoptotic factor for the endothelial cells from arteries, veins and lymphatics. Faced with increased secretion of VEGF and its binding to receptors on the surface of endothelial cells, VEGF is a signal transduction leading to production of molecules including enzymes for the degradation of extracellular matrix and increase of vascular permeability. This will facilitate cell proliferation, survival and migration of endothelial cells. It is also known as the vascular permeability factor (VPF) (Dvorak, 2006) on the basis of its ability to induce leakage through the blood brain barrier in some pathological situations (Ferrara, 2001; Lafuente et al., 1999; Lafuente et al., 2002). Helmlinger et al. (2000) stated that in the vasodilatation process the VEGF induced the elongation of endothelial cells but not their proliferation. In the angiogenesis process, VEGF works in line with other factors such as angiopoietin and ephrins (Tonini et al., 2003). It has been shown in human biopsies that VEGF overexpression in gliomas correlates directly to proliferation, vascularization and degree of malignancy, and therefore inversely to prognosis (Ke et al., 2000; Lafuente et al., 1999; Plate, 1999).

5. ENU glioma microvascular adaptation

Along the glioma progression, there is a transition from the homogeneous capillary network to an anarchic angioarchitecture. Microvessels have to adapt in order to maintain blood perfusion and metabolic support in adverse conditions, constituting a peculiar tissular microenvironment in response to hypoxia (Blouw et al., 2003). Glioma microvascular remodelling consists in a process of vascular aberration along the neoplasia development. Vascular development process led to microvascular proliferations that are a histopathological hallmark of glioblastoma (Kleihues et al., 2007). Some authors consider the core of a high-grade glioma as an avascular zone, since it has scarce capillaries with wide lumen and a fragmented basal membrane, being rather inefficient for metabolic exchange (Vajkoczy & Menger, 2004).

Tumour blood vessels have multiple abnormalities that result in a heterogeneous environment. They are disorganized, tortuous, sinusoidal, branchy and leaky, the diameter is irregular and the walls are thinner than those found in healthy brain tissue (Bigner et al., 1998). Following our results obtained by LEA and Butyrylcholinesterase (BChE) histochemistry (Bulnes et al., 2009) we showed a transition from the homogeneous capillary network of early stages to an anarchic angioarchitecture of advanced ENU-glioma stages (Figure 3). It was found that the vessel density decreased and the vascular size increased in order to glioma malignity (Bulnes et al., 2009). The initial stage of ENU-glioma was constituted by microvessels similar to the brain capillaries, the intermediate stage by tortuous, disorganized and dilated vessels and the advanced stage by anarchic and aberrant

vessels such as: multilayered “glomeruloid tuft”; “garland” of proliferated vessels and huge dilated vessels (Kleehues et al., 2007).

One result to take in consideration was the gradient from the well-oxygenated tumour periphery to the central hypoxic core of ENU-glioblastoma. Dilated intratumour vessels, expressing VEGF (Lafuente et al., 1999) increase their lumen on account of endothelial elongation but not of cell proliferation (Helmlinger et al., 2000). The intratumour area displays irregularly branching vessels, variable intravascular spaces and large avascular areas. It is also worth mentioning that perivascular cells of aberrant vessels of ENU-GBM often displayed a high activity for BChE, depicted by a strong brown staining (Bulnes et al., 2009). BChE activity is strongly related to neurogenesis and cellular proliferation (Mack & Robitzki, 2000), having a great role in tumourigenesis. These findings have led us to postulate that these perivascular cells might be stem cells proliferating around intratumour vessels (Anderson et al., 2005; Brat et al., 2004) and migrating through the vascular extracellular matrix (Ruoslahti, 2002). This could corroborate the hypothesis that stem cells adapted to hypoxic stress use the vascular extracellular matrix for migration and invasion. In addition to this, in previous work we have shown that these cells co-expressed Ki-67 and VEGF (Bulnes & Lafuente, 2007).

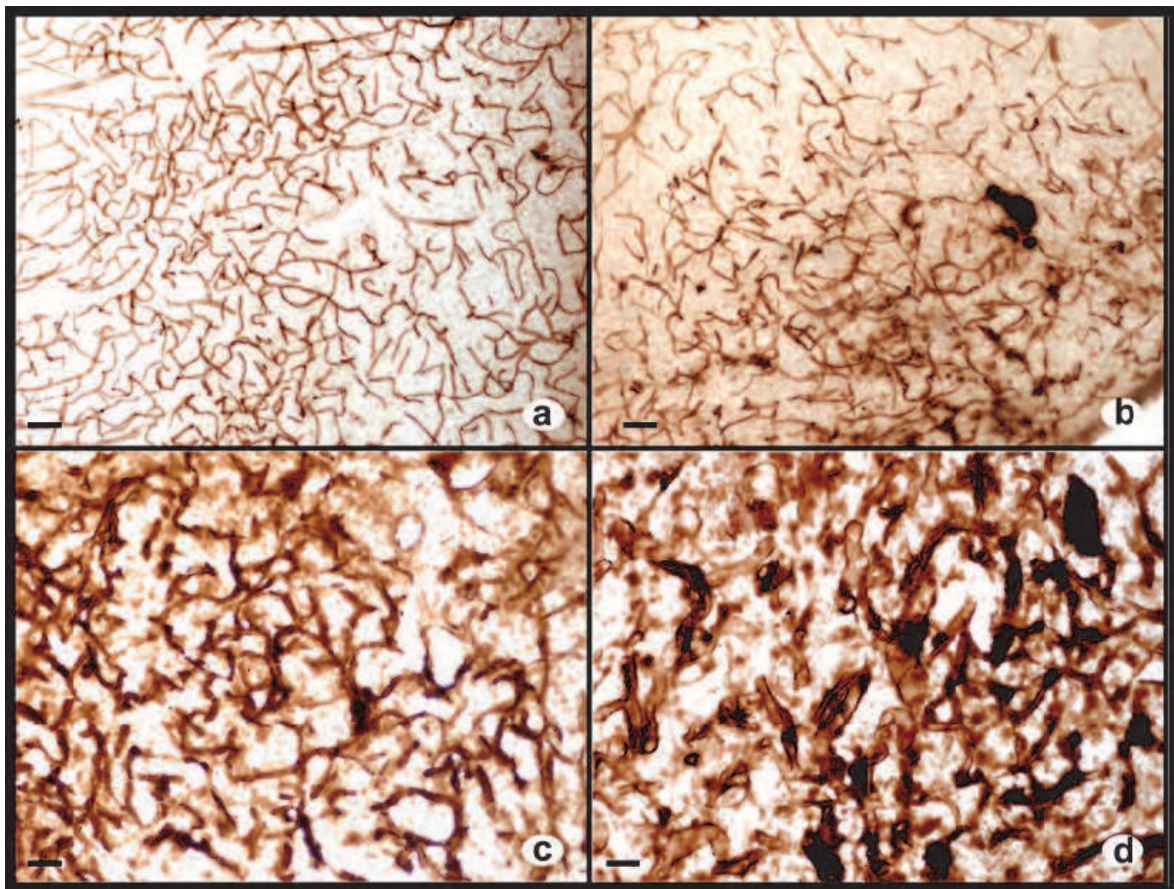


Fig. 3. Angioarchitecture study of gliomas shown by butyrylcholinesterase histochemistry. a) Angioarchitecture of the cerebral cortex of the rat brain. b) Periventricular small neoplastic mass (initial stage) showing some strongly-positive vessels for BChE. c) Intermediate ENU-glioma stage displaying a network of numerous tortuous capillaries of anarchic distribution. d) Malignant infiltrating macrotumour, with dilated vessels of the intratumour area with strongly BChE positive cells. (Scale bar of 50µm).

Glioma malignancy process is mediated by the vascular remodelling and the angiogenesis process where the blood brain barrier (BBB) function is implicated. The BBB is the set of mechanisms (physical and metabolic) that regulate the passage of elements from the blood plasma to neural tissue. This especial barrier is necessary for the cerebral homeostasis and it is associated with the hydrostatic and osmotic pressure gradients across the capillary (Hatashita & Hoff, 1986).

In pathological conditions, the increase of vascular permeability could be due to the blood brain barrier dysfunction, to a structural break-down or to its immaturity. Endothelial cells (ECs) of tumour vessels do not form a closed barrier, and pericytes are loosely attached (Baluk, et al., 2005). Defective tight junctions explain the tumour vessel leakiness which leads to blood brain barrier (BBB) breakdown and the oedema associated with brain tumours (Hashizume et al., 2000; Papadopoulos et al., 2004). Brain oedema in gliomas is an epiphenomenon related to BBB breakdown and is another cause of tumour mortality (Ballabh et al., 2004). The BBB distortion and permeability increase have been related to intravital dyes extravasation (Lafuente et al., 1994, 2004), Gd-DTPA contrast enhancement on T1-w images (Brasch & Turetschek, 2000; Cha et al., 2003; Claes et al., 2007) and to changes in the expression of BBB markers as glucose transporter-1 (GluT-1) (Dobrogowska & Vorbrodt, 1999) and structural rat specific antigen of BBB (EBA) (Argandona et al., 2005; Lafuente et al., 2006; Lin & Ginsberg, 2000; Krum et al., 2002; Sternberger et al., 1989; Zhu et al., 2001).

In our ENU model, vascular adaptations predominate over angiogenesis (Lafuente et al., 2000; Bian et al., 2006). Microvascular adaptations in early development stages are based on vasodilatation, endothelium elongation and permeability increase mediated by VEGF-A without BBB dysfunction. On the other hand, in malignant gliomas the microvascular adaptations vary according to blood flow perfusion. Permeability increase in intratumour vessels is not enough to supply the metabolic demand, and triggering of the angiogenesis process on the tumour border is necessary. When the blood flow inside and around the tumour becomes irregular and chaotic, partly due to the aberrant microvessels, the relative tissue hypoxia triggers the production of hypoxia inducible factor-1 α (Chen et al., 2009; Jain et al., 2007), upregulating the expression of VEGF-A and endothelial nitric oxide synthase (eNOS). VEGF-A induces the synthesis of NO by phosphorylation of endothelial NO synthase via PI-3K/Akt kinase (Osuka et al., 2004, Ziche & Morbidelli, 2009), thus promoting BBB breakdown and increasing permeability. Although, the role of eNOS and VEGF-A in tumour induced brain oedema is still a matter of debate. Our previous studies demonstrates that eNOS overexpression in the microvasculature of intermediate and advanced ENU-gliomas correlates with the loss of immunostaining for primary BBB markers GluT-1 and EBA (Bulnes et al., 2010) (Figure 4).

Following the finding showed in human tissues, in ENU-malignant glioma astrocytic processes and pericytes were loosely attached to endothelial cells of tumour vessels without forming a continuous layer (Baluk et al., 2005) (result not published). In addition to this, defective tight junctions (TJs) without occludin protein expression, also lead to oedema associated with ENU induced brain tumours. We showed an intratumoural glioma oedema instead of peritumoural one by gadolinium contrast enhancement and intravital dyes extravasation (Bulnes et al., 2009, 2010).

6. Glioma stem cells and angiogenesis in ENU model

The moment named “angiogenic switch”, when the angiogenesis starts, is showed at ENU-glioma intermediate stage due to the presence of overexpression of VEGF and eNOS

(Bulnes et al., 2010). Because stem cells have been associated with the synthesis of VEGF (Bao et al., 2006), we focused on the identification of GSC using antibodies against the antigens CD133 and Nestin. We showed three distribution patterns of these cells (Figure 5): 1- isolated in the tumour periphery areas; 2- numerous small cells forming intratumour niches and 3- cells around the tortuous and aberrant vessel (intermediate-advanced stages).

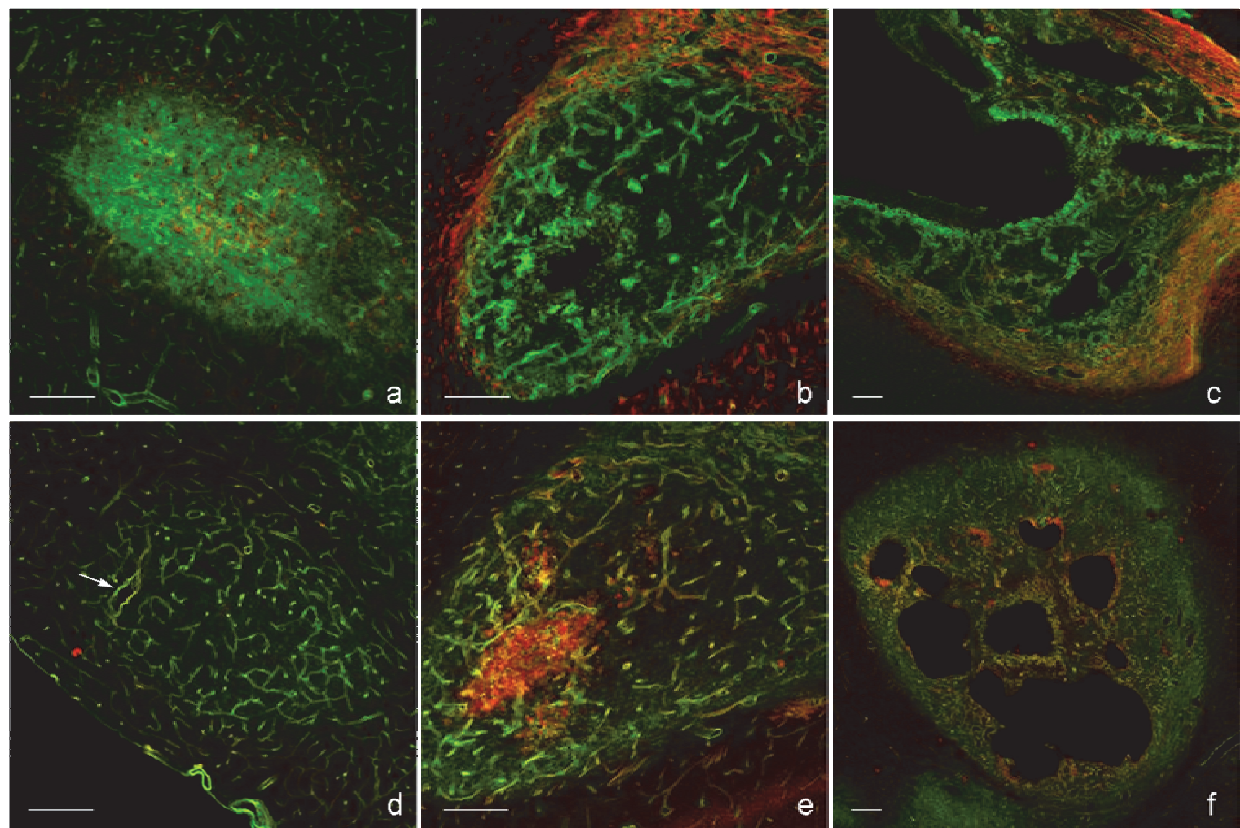


Fig. 4. Vascular endothelial growth factor and endothelial nitric oxide synthase expression during ENU-glioma development. Confocal microphotographs showing VEGF₁₆₅ (a-c, red) and eNOS (d-f, red) in different stages of glioma. Vascular network is showed by immunofluorescence for tomato lectin LEA (green). (a, d) Initial stages of gliomas display basal stain of VEGF₁₆₅ (a) and overexpression of eNOS only in dilated vessels (d, white arrow). (b, e) Anaplastic ENU-glioma corresponding with the intermediate tumour stage shows overexpression of VEGF₁₆₅ in the neoangiogenic tumour border (b) and overexpression of eNOS (e, yellow) in dilated and tortuous vessels from intratumour area. (c, f) ENU-induced glioblastomas show an heterogeneous pattern of expression for both markers. VEGF distribution is mainly showed in the peritumour neoangiogenic area (c) while eNOS overexpress as patching in vascular sections of intratumour aberrant microvessels (f). (Bar scale of 200 μ m).

According to human astroцитomas, in ENU-glioma the number of positive cells for CD133 and Nestin antibodies increases with malignant grades of the tumour (Ma et al., 2008). Nestin⁺ cells were found in every stage of tumour development. It corroborated that the expression of Nestin is linked to the glioma grade, as stated in previous researches (Ehrmann et al., 2005).

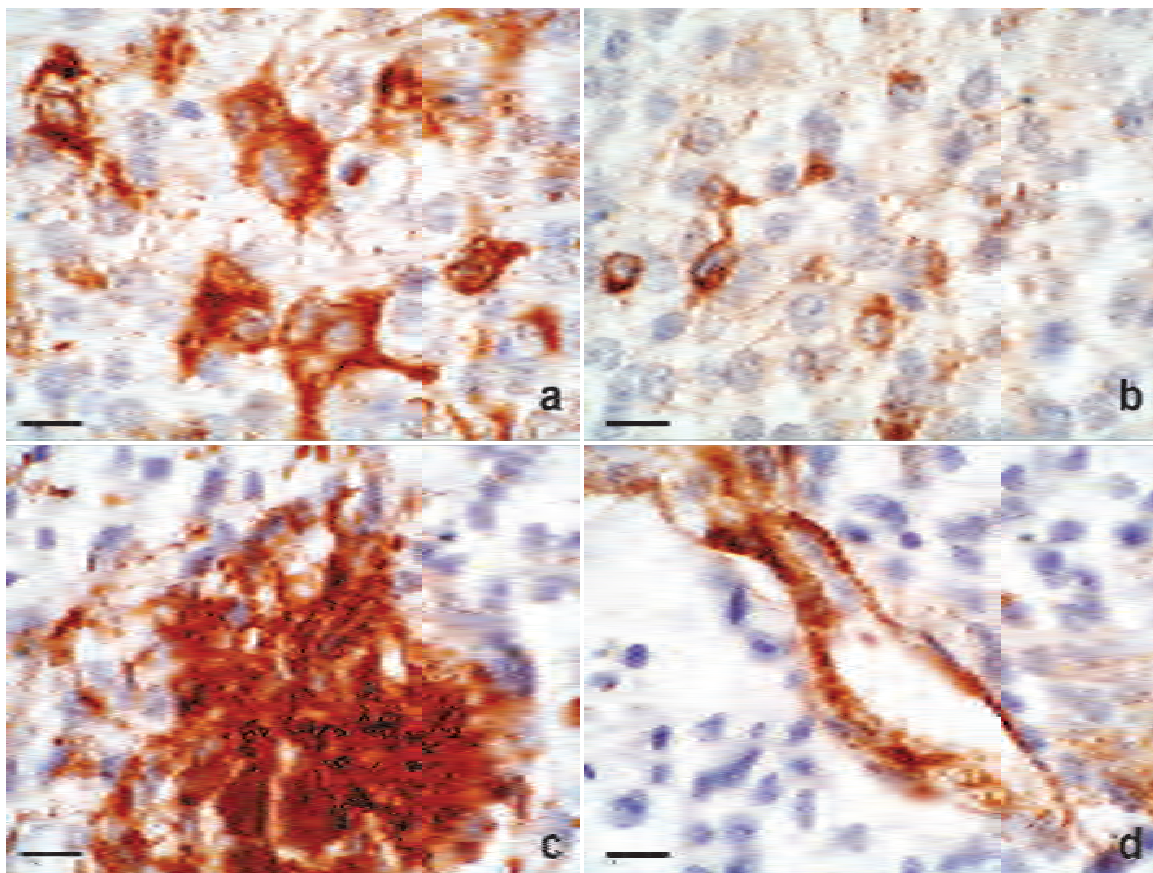


Fig. 5. Immunoexpression of Nestin antigen in 4 μm paraffin sections showed by DAB staining (Brown). a-b) Intratumour area of ENU-Glioma showing two kinds of isolated cells marked by Nestin antibody. a) Cells of big cytoplasm and nucleon distributed predominantly near the periphery of the tumour. They display an astrocyte shape and GFAP positivity. b) Small cells with scarce cytoplasm and prolongations. c-d) Two distribution of stem cells: Intratumour niches (c) and around the vascular endothelium of neoplastic microvessels (d). (Bar scale of 10 μm).

By the other hand, CD133+ cells were only present since intermediate stages corresponding with “angiogenic switch”. The distribution of CD133+ cells corresponds mainly to overexpression of VEGF in neoangiogenic border and intratumour hypoxic areas of neoplasia (Bulnes & Lafuente, 2007). It has been reported that tumour stem cells overexpress VEGF factor, so this cell population could be involved in the process of angiogenesis. Our results agree with the staining of CD133 described in the advanced and medium stage of human gliomas. Therefore, CD133 expression has been related to poor prognosis (Zeppernick et al., 2008).

We showed that some cells coexpress the antibodies Nestin, CD133 and VEGF₁₆₅. They were forming niches around microvessels or into hypoxic areas (Figure 6). Only cells distributed in the periphery of neoplasia were stained for GFAP and displayed astrocyte morphology. The relationship between CD133+ cells and vessels wall was shown around the glomeruloid vessels, distributed in the neoangiogenic border of ENU-GBM, and delimiting huge dilated intratumour vessels (Figure 7). The presence of CD133+ cells near these aberrant vessels which display BBB disturbance may corroborate the pivotal role of stem cells in the

neoplasia proliferation and invasion. These cells may be use extracellular matrix of vessel wall to migrate and infiltrate the brain parenchyma (Borovski et al., 2009).

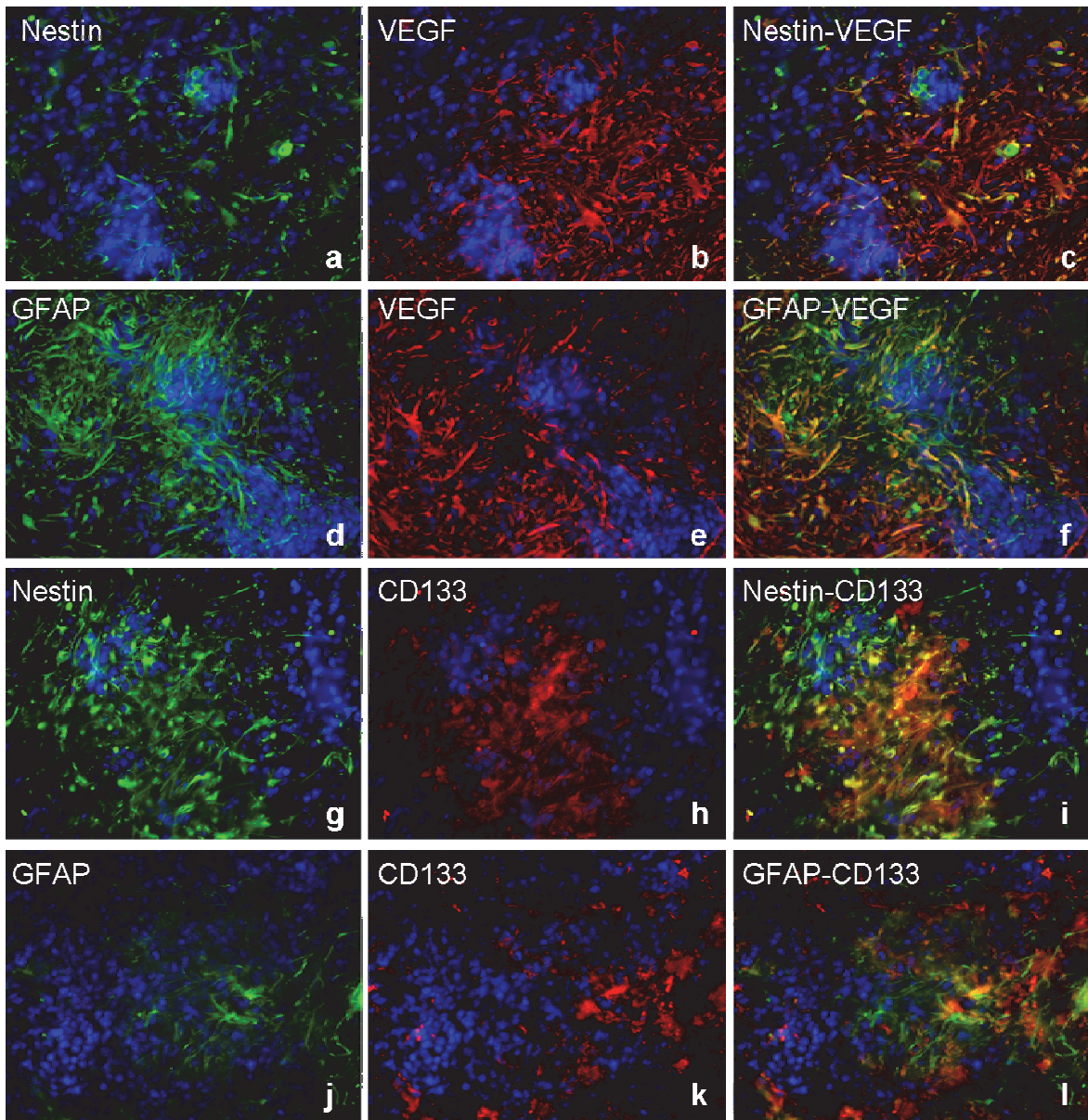


Fig. 6. Relationship between stem cell markers and proangiogenic factor VEGF in intratumour niches of advanced ENU-glioma stage. Study performed by double immunofluorescence, all tumours are counterstained with Hoechst. a-c) Microphotographs of Nestin+ cells (a, in green) and VEGF+ cells (b, in red) and colocalization (yellow, c). VEGF+ cells predominate over Nestin+ cells. Some cells with big cytoplasm are Nestin-VEGF+. Small Nestin+ cells form a cluster and lack the staining of VEGF (at the top). d-f) Colocalization (yellow) of glial fibrillary acidic protein (GFAP, green) and VEGF (red). All VEGF+ cells in this intratumour area are stained for GFAP and display the astrocyte shape. g-i) Relationship between the two markers of stem cells: Nestin (green) and CD133 (reed). This niche shows higher density of nestin+ cells (g) than CD133+ cells (h). Almost all of the CD133+ cells coexpress nestin antibody (i, yellow). j-l) Coexpression of GFAP (green) and CD133 (red). Some cells coexpress both antibodies (l, yellow). (x400 Amplification)

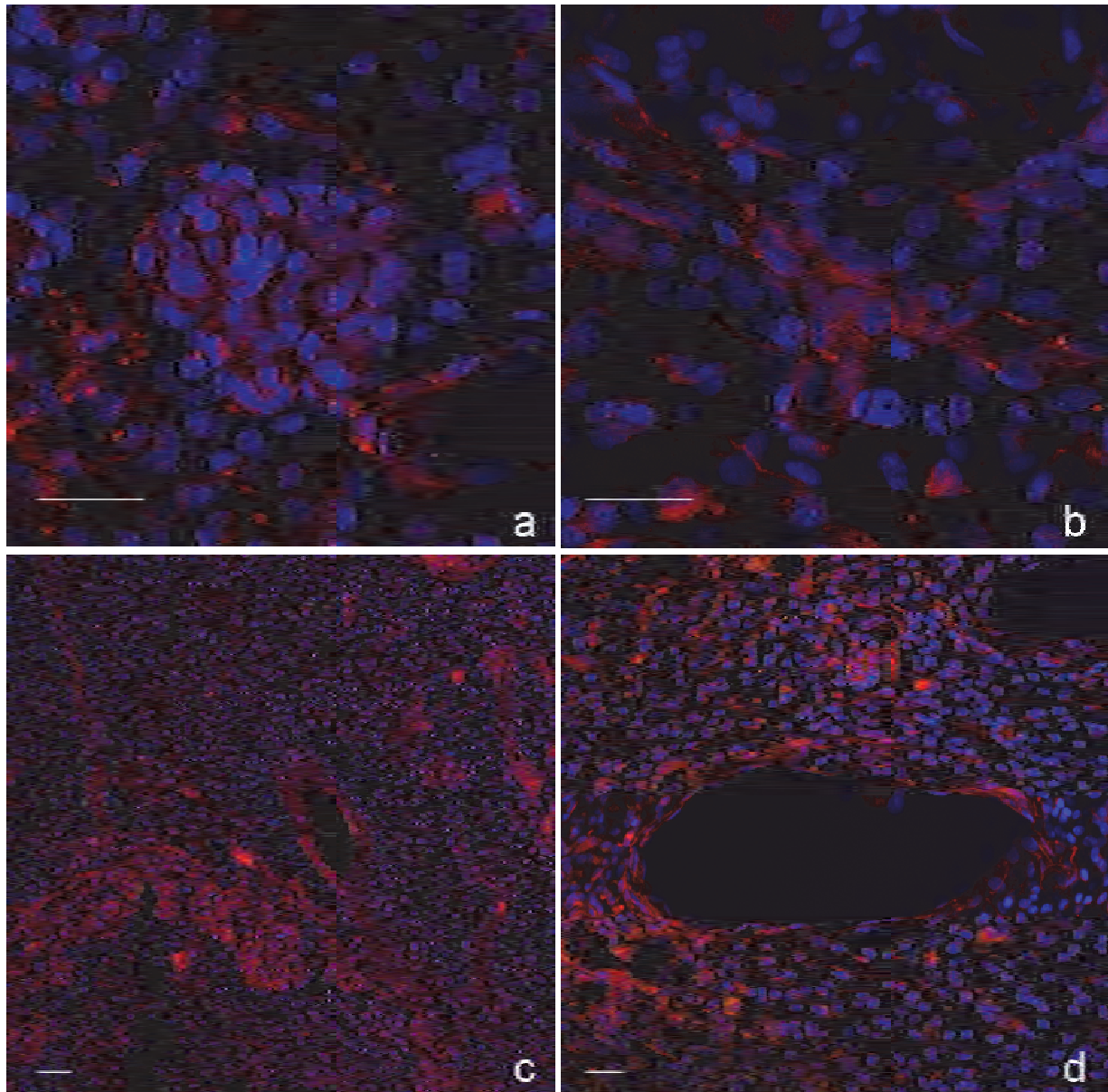


Fig. 7. Immunofluorescence confocal images of CD133 antibody (red) in ENU-glioblastoma. All sections are counterstained with Hoechst (blue). a) Intratumour niche displaying some CD133+ cells. b) Tortuous vessel of the periphery of the neoplasia with CD133+ structures attached to the vascular endothelium. c) Aberrant vessels sections demarcated by CD133+ cells. d) Vessels with huge lumen display CD133+ cells around some vascular sections. (Scale bar of 20 μ m).

Although some authors proposed that CD133+ cells were selected cells with tumorigenic capacity (Schiffer et al., 2010), others postulated that a fraction of CD133+ cells might be related to the endothelial differentiation and could generate tumour vessels (Wang et al., 2010). Recently, Soda et al. (2011) reported that part of the vasculature of GBM was originated from tumour cells. Therefore, some researchers as Wang et al. (2010) and Ricci-Vitiani et al. (2010) were centred to describe the proportion of the stem cells that contributed to blood vessels in glioblastoma. After their results they postulated that glioblastoma microvessels were originated from tumour stem like cells.

7. Conclusion

Following evidences reported in the literature and our findings, the distribution of “glioma stem cells” close to microvascular wall during the glioma malignancy process suggests a synergistic role of both structures. Indeed, based on our results we corroborate the hypothesis that glioma stem cells may induce angiogenesis via VEGF synthesis or endothelial differentiation.

This knowledge will contribute to the generation of new antitumour therapy treatment against glioma stem cells. ENU experimental model would be considered as an useful option to check a design of treatment strategies against these cells.

8. Acknowledgment

This work has been partially supported by Gangoiti Foundation, SAIOTEK and GIC 491/10 Basque Government.

9. References

- Al-Hajj, M.; Wicha, M.S.; Benito-Hernandez, A.; Morrison, S.J. & Clarke, M.F. (2003). Prospective identification of tumorigenic breast cancer cells. *Proceedings of the National academy of sciences of the United States of America*, Vol.100, No.7, (April 2003), pp. 3983-8, ISSN 0027-8424
- Altman, J. & Das, G.D. (1966). Autoradiographic and histological studies of postnatal neurogenesis. I. A longitudinal investigation of the kinetics, migration and transformation of cells incorporating tritiated thymidine in neonate rats, with special reference to postnatal neurogenesis in some brain regions. *Journal of Comparaty Neurology*, Vol.126, No.3, (March 1966), pp. 337-89, ISSN 0021-9967
- Alvarez-Buylla, A. & García-Verdugo, J.M. (2002). Neurogenesis in Adult Subventricular Zone. *Journal of Neuroscience*, Vol.22, No.3, (February 2002), pp. 629-34. ISSN 0270-6474
- Anderson, S.A.; Glod, J.; Arbab, A.S.; Noel, M.; Ashari, P.; Fine, H.A. & Frank, J.A. (2005). Noninvasive MR imaging of magnetically labeled stem cells to directly identify neovasculature in a glioma model. *Blood*, Vol.105, No.1, (January 2005), pp. 420-425, ISSN 0006-4971
- Argandoña, E.G.; Bengoetxea, H. & Lafuente, J.V. (2005). Lack of experience-mediated differences in the immunohistochemical expression of blood-brain barrier markers (EBA and GluT-1) during the postnatal development of the rat visual cortex. *Brain Research. Developmental Brain Research*, Vol.156, No.2, (May 2005), pp. 158-166, ISSN 0006-8993
- Ballabh, P.; Braun, A. & Nedergaard, M. (2004). The blood-brain barrier: an overview: structure, regulation, and clinical implications. *Neurobiology of Disease*, Vol.16, No.1, pp.1-13. ISSN 0969-9961
- Baluk, P.; Hashizume, H. & McDonald, D.M. (2005). Cellular abnormalities of blood vessels as targets in cancer. *Current Opinion in Genetics & Development*, Vol.15, No.1, (June 2004), pp. 102-111, ISSN 0959-437X
- Bao, S.; Wu, Q.; McLendon, R.E.; Hao, Y.; Shi, Q.; Hjelmeland, A.B.; Dewhirst, M.W.; Bigner, D.D. and Rich, J.N. (2006). Glioma stem cells promote radioresistance by

- preferential activation of the DNA damage response. *Nature*, Vol.444, No.7120, (December 2006), pp. 756-60, ISSN 0028-0836
- Bengoetxea, H.; Argandoña, E.G. & Lafuente, J.V. (2008). Effects of visual experience on vascular endothelial growth factor expression during the postnatal development of the rat visual cortex. *Cerebral Cortex*, Vol.18, No.7, (July 2008), pp. 1630-1639, ISSN 10473211
- Bergsagel, D.E., & Valeriote, F.A. (1968). Growth characteristics of a mouse plasma cell tumor. *Cancer Research*, Vol. 28, No. 11, (November 1968), pp. 2187-2196, ISSN 00085472
- Bergers, G. & Benjamin, L.E. (2003). Tumorigenesis and the angiogenic switch. *Nature Reviews Cancer*, Vol. 3, No.6, pp. 401-10, ISSN 1474175X
- Bian, X.W.; Jiang X.F.; Chen, J.H.; Bai, J.S.; Dai, C.; Wang, Q.L.; Lu, J.Y.; Zhao, W.; Xin, R.; Liu, M.Y.; Shi, J.Q. & Wang, J.M. (2006). Increased angiogenic capabilities of endothelial cells from microvessels of malignant human gliomas. *International Immunopharmacology*, Vol.6, No.1, (January 2006), pp. 90-99, ISSN 15675769
- Bielas, J.H. & Heddle, J.A. (2000). Proliferation is necessary for both repair and mutation in transgenic mouse cells. *Proceedings of the National Academy of Sciences of the United States of America*, Vol.97, No.21, (October 2000), pp. 11391-11396, ISSN 00278424
- Bigner, D.D.; McLendon R.E. & Bruner, J.M. (1998) Russell & Rubinstein's. Pathology of tumors of the nervous system, 6th ed., Arnold, London.
- Blouw, B.; Song, H.; Tihan, T.; Bosze, J.; Ferrara, N.; Gerber, H.P.; Johnson, R.S. & Bergers, G. (2003). The hypoxic response of tumors is dependent on their microenvironment. *Cancer Cell*, Vol.4, No.2, (August 2003), pp. 133-146, ISSN 15356108
- Bonnet, D. & Dick, J.E. (1977). Human acute myeloid leukemia is organized as a hierarchy that originates from a primitive hematopoietic cell. *Nature Medicine*, Vol.3, No.7, (July 1997), pp. 730-7, ISSN: 10788956
- Borovski, T.; Verhoeff, J.J.; ten Cate, R.; Cameron, K.; de Vries, N.A.; van Tellingen, O.; Richel, D.J.; Van Furth, W.R.; Medema, J.P. & Sprick, M.R. (2009). Tumor microvasculature supports proliferation and expansion of glioma-propagating cells. *International Journal of Cancer*, Vol.125, No.5, (September 2009), pp. 1222-1230, ISSN 00207136
- Brasch, R. & Turetschek K. (2000). MRI characterization of tumors and grading angiogenesis using macromolecular contrast media: status report. *European Journal of Radiology*, Vol.34, No.3, (June 2000), pp 148-155, ISSN 0720048X
- Brat, D.J.; Castellano-Sanchez, A.A.; Hunter, S.B; Pecot, M.; Cohen, C.; Hammond, E.H.; Devi, S.N.; Kaur, B. & Van Meir, E.G. (2004). Pseudopalisades in glioblastoma are hypoxic, express extracellular matrix proteases, and are formed by an actively migrating cell population. *Cancer Research*, Vol.64, No.3, (February 2004), pp 920-927, ISSN 00085472
- Bulnes, S. & Lafuente, J.V. (2007). VEGF immunopositivity related to malignancy degree, proliferative activity and angiogenesis in ENU-induced gliomas. *Journal of Molecular Neuroscience*, Vo.33, No.2, (October 2007), pp. 163-172, ISSN 08958696
- Bulnes, S.; Argandona, E.G.; Bengoetxea, H.; Leis, O.; Ortuzar, N. & Lafuente, J.V. (2010). The role of eNOS in vascular permeability in ENU-induced gliomas. *Acta Neurochirurgica. Supplement*, Vo.106, pp. 277-282, ISSN 00651419

- Bulnes, S.; Bilbao, J. & Lafuente, J.V. (2009). Microvascular adaptive changes in experimental endogenous brain gliomas. *Histology and Histopathology*, Vol.24, No.6, (June 2009), pp. 693-706, ISSN 16995848
- Bulnes-Sesma, S.; Ullibarri-Ortiz de, Z.N. & Lafuente-Sanchez, J.V. (2006). Tumour induction by ethylnitrosourea in the central nervous system. *Revista de Neurologia*, Vol.43, No.12, (December 2006), pp. 733-738, ISSN 02100010
- Burger, P.C.; Shibata, T.; Aguzzi, A. & Kleihues, P. (1988). Selective induction by N-nitrosoethylurea of oligodendrogliomas in fetal forebrain transplants. *Cancer Research*, Vol.48, No.10, pp. 2871-2875, ISSN 00085472
- Capilla-Gonzalez, V.; Gil-Perotin, S. & Garcia-Verdugo, J.M. (2010). Postnatal exposure to N-ethyl-N-nitrosourea disrupts the subventricular zone in adult rodents. *European Journal of Neuroscience*, Vol. 32, No.11, (December 2010), pp. 1789-1799, ISSN 0953816X
- Carmeliet, P. & Jain, R.K. (2000). Angiogenesis in cancer and other diseases. *Nature*, Vol.407, No.6801, (September 2000), pp. 249-257, ISSN 00280836
- Carmeliet, P. (2003). Angiogenesis in health and disease. *Nature Medicine*, Vol.9, No.6, (June 2003), pp. 653-660, ISSN 10788956
- Cha, S.; Johnson, G.; Wadghiri, Y.Z.; Jin, O.; Babb, J.; Zagzag, D. & Turnbull, D.H. (2003). Dynamic, contrast-enhanced perfusion MRI in mouse gliomas: correlation with histopathology. *Magnetic Resonance in Medicine*, Vol. 49, No. 5, (May 2003), pp. 848-855, ISSN 07403194
- Chen, L.; Endler, A.; & Shibasaki, F. (2009). Hypoxia and angiogenesis: regulation of hypoxia-inducible factors via novel binding factors. *Experimental and Molecular Medicine*, Vol. 41, No. 12, (December 2009), pp. 849-857, ISSN 12263613
- Cheng, JX.; Liu, B.L. & Zhang, X. (2009). How powerful is CD133 as a cancer stem cell marker in brain tumors?. *Cancer Treatment Reviews*, Vol.35, No.5, (August 2009), pp. 403-8, ISSN 0305-7372
- Claes, A.; Gambarota, G.; Hamans, B.; Van, T.O.; Wesseling, P.; Maass, C.; Heerschap, A. & Leenders, W. (2007). Magnetic resonance imaging-based detection of glial brain tumors in mice after antiangiogenic treatment. *International Journal of Cancer*, Vol. 122, No.9, (May 2008), pp. 1981-1986, ISSN 00207136
- Collins, A.T.; Berry, P.A.; Hyde, C.; Stower, M.J. & Maitland, N.J. (2005). Prospective identification of tumorigenic prostate cancer stem cells. *Cancer Research*, Vol. 65, No.23, (December 2005), pp. 10946-10951, ISSN 00085472
- Corbeil, D.; Röper, K.; Hellwig, A.; Tavian, M.; Miraglia, S.; Watt, S.M.; Simmons, P.J.; Peault, B.; Buck, D.W. & Huttner, W.B. (2000). The human AC133 hematopoietic stem cell antigen is also expressed in epithelial cells and targeted to plasma membrane protrusions. *Journal of Biological Chemistry*, Vol.275, No.8, (February 2000), pp. 5512-5520, ISSN 00219258
- Dahlstrand, J.; Collins, V.P. & Lendahl, U. (1992). Expression of the class VI intermediate filament nestin in human central nervous system tumors. *Cancer Research*, Vol.52, No.19, pp. 5334-5341, ISSN 00085472
- Dell'Albani, P. (2008). Stem cell markers in gliomas. *Neurochemical Research*, Vol. 33, No.12, (December 2008), pp. 2407-2415, ISSN 03643190
- Dobrogowska, D.H. & Vorbrodt, A.W. (1999). Quantitative immunocytochemical study of blood-brain barrier glucose transporter (GLUT-1) in four regions of mouse brain.

- Journal of Histochemistry and Cytochemistry*, Vol. 47, No. 8, (August 1999), pp. 1021-1029, ISSN 00221554
- Doetsch, F.; Caillé, I.; Lim, D.A.; García-Verdugo, J.M. & Alvarez-Buylla, A. (1999). Subventricular zone astrocytes are neural stem cells in the adult mammalian brain. *Cell*, Vol.97, No.6, pp. 703-716, ISSN 00928674
- Donnenberg, V.S. & Donnenberg, A.D. (2005). Multiple drug resistance in cancer revisited: the cancer stem cell hypothesis. *Journal of Clinical Pharmacology*, Vol. 45, No.8, (August 2005), pp. 872-877, ISSN 00912700
- Dvorak, H.F. (2006). Discovery of vascular permeability factor (VPF). *Experimental Cell Research*, Vol. 312, No. 5, (March 2006), pp. 522-526, ISSN 00144827
- Ehrmann, J.; Kolar, Z. & Mokry, J. (2005). Nestin as a diagnostic and prognostic marker: immunohistochemical analysis of its expression in different tumours. *Journal of Clinical Pathology*, Vol.58, No. 2, (February 2005), pp.222-223, ISSN 00219746
- Eriksson, P.S.; Perfilieva, E.; Bjork-Eriksson, T.; Alborn, A.M.; Nordborg, C.; Peterson, D.A. & Gage, F.H. (1998). Neurogenesis in the adult human hippocampus. *Nature Medicine*, Vol.4, No.11, (November 1998), pp. 1313-1317, ISSN 10788956
- Esposito, I.; Kleeff, J.; Bischoff, S.C.; Fischer, L.; Collecchi, P.; Iorio, M.; Bevilacqua, G., Büchler, M.W. & Friess, H. (2002). The stem cell factor-c-kit system and mast cells in human pancreatic cancer. *Laboratory Investigation*, Vol.82, No.11, (November 2002), pp. 1481-1492, ISSN 00236837
- Fan, X.; Salford, L.G. & Widegren, B. (2007). Glioma stem cells: Evidence and limitation. *Seminars in Cancer Biology*, Vol. 17, No. 3, (June 2007), pp. 214-218, ISSN 1044579X
- Ferrara, N. (2001). Role of vascular endothelial growth factor in regulation of physiological angiogenesis. *American Journal of Physiology - Cell Physiology*, Vol. 280, No.6, pp. C1358-C1366, ISSN 03636143
- Ferrara, N.; Gerber, H.P. & LeCouter, J. (2003). The biology of VEGF and its receptors. *Nature Medicine*, Vol. 9, No. 6, (June 2003), pp.669-676, ISSN 10788956
- Fidler, I.J. & Kripke, M.L. (1997). Metastasis results from preexisting variant cells within a malignant tumor. *Science*, Vol. 197, No. 4306, pp. 893-895, ISSN 00368075
- Folkman, J. (2006). Angiogenesis. *Annual Review of Medicine*, Volume 57, 2006, pp. 1-18, ISSN 00664219
- Folkman, J. (2000). *Tumour angiogenesis*, Cancer Medicine. Hamilton, Ontario
- Fong, G.H. (2008). Mechanisms of adaptive angiogenesis to tissue hypoxia. *Angiogenesis*, Vol. 11, No. 2, (June 2008), pp. 121-140, ISSN 09696970
- Gangemi, R.M.; Griffero, F.; Marubbi, D.; Perera, M.; Capra, M.C.; Malatesta, P.; Ravetti, G.L.; Zona, G.L.; Daga, A. & Corte, G. (2009). SOX2 silencing in glioblastoma tumor-initiating cells causes stop of proliferation and loss of tumorigenicity. *Stem Cells*, Vol. 27, No.1, (January 2009), pp. 40-48, ISSN 10665099
- Germano, I.; Swiss, V. & Casaccia, P. (2010). Primary brain tumors, neural stem cell, and brain tumor cancer cells: Where is the link?. *Neuropharmacology*, Vol. 58, No.6, (May 2010), pp. 903-910, ISSN 00283908
- Götz, M. & Huttner, W.B. (2005). The cell biology of neurogenesis. *Nature Reviews Molecular Cell Biology*, Vol. 6, No.10, (November 2005), pp. 777-788, ISSN 14710072
- Griguer, C.E.; Oliva, C.R.; Gobin, E.; Marcorelles, P.; Benos, D.J.; Lancaster, J.R. Jr. & Gillespie, G.Y. (2008). CD133 is a marker of bioenergetic stress in human glioma. *PLoS ONE*, Vol. 3, No. 11, (November 2008), Article number e3655, ISSN 19326203

- Hadjipanayis, C.G. & Van Meir, E.G. (2009). Brain cancer propagating cells: biology, genetics and targeted therapies. *Trends in Molecular Medicine*, Vol. 15, No.11, (November 2009), pp.519-530, ISSN 14714914.
- Hashizume, H.; Baluk, P.; Morikawa, S.; McLean, J.W.; Thurston, G.; Roberge, S.; Jain, R.K. & McDonald, D.M. (2000). Openings between defective endothelial cells explain tumor vessel leakiness. *American Journal of Pathology*, Vol. 156, No. 4, pp. 1363-1380, ISSN 00029440
- Hatashita, S. & Hoff, J.T. (1986). Cortical tissue pressure gradients in early ischemic brain edema. *Journal of Cerebral Blood Flow and Metabolism*, Vol.6, No.1, 1, pp.1-7, ISSN 0271678X
- Heddleston, J.M.; Li, Z.; McLendon, R.E.; Hjelmeland, A.B. & Rich, J.N. (2009). The hypoxic microenvironment maintains glioblastoma stem cells and promotes reprogramming towards a cancer stem cell phenotype. *Cell Cycle*, Vol. 8, No.20, (October 2009), pp. 3274-3284, ISSN 15384101.
- Helmlinger, G.; Endo, M.; Ferrara, N.; Hlatky, L. & Jain, R.K. (2000). Growth factors: Formation of endothelial cell networks. *Nature*, Vol. 405, No. 6783, (May 2000), pp. 139-141, ISSN 00280836
- Holland, E.C.; Li, Y.; Celestino, J.; Dai, C.; Schaefer, L.; Sawaya, R.A.; & Fuller, G.N. (2000). Astrocytes give rise to oligodendrogliomas and astrocytomas after gene transfer of polyoma virus middle T antigen in vivo. *American Journal of Pathology*, Vol. 157, No.3, pp. 1031-1037, ISSN 00029440
- Holmin, S.; Almqvist, P.; Lendahl, U. & Mathiesen, T. (1997). Adult nestin-expressing subependymal cells differentiate to astrocytes in response to brain injury. *European Journal of Neuroscience*, Vol.9, No. 1, pp. 65-75, ISSN 0953816X
- Ignatova, T.N.; Kukekov, V.G.; Laywell, E.D.; Suslov, O.N.; Vrionis, F.D. & Steindler, D.A. (2002). Human cortical glial tumors contain neural stem-like cells expressing astroglial and neuronal markers in vitro. *GLIA*, Vol.39, No. 3, (September 2002), pp. 193-206, ISSN 08941491
- Jain, R.K.; di TE, Duda, D.G.; Loeffler, J.S.; Sorensen, A.G. & Batchelor, T.T. (2007) Angiogenesis in brain tumours. *Nature Reviews Neuroscience*, Vol.8, No.8, (August 2007), pp. 610-622, ISSN 1471003X
- Jang, T.; Litofsky, N.S.; Smith, T.W.; Ross, A.H. & Recht, L.D. (2004). Aberrant nestin expression during ethylnitrosourea- (ENU)-induced neurocarcinogenesis. *Neurobiology of Disease*, Vol. 15, No. 3, (April 2004), pp. 544-552, ISSN 09699961
- Jensen, R.L. (2006). Hypoxia in the tumorigenesis of gliomas and as a potential target for therapeutic measures. *Neurosurgical focus*, Vol. 20, No. 4, pp. E24, ISSN 10920684
- Jin, K.; Zhu, Y.; Sun, Y.; Mao, X.O.; Xie, L. & Greenberg, D.A. (2002). Vascular endothelial growth factor (VEGF) stimulates neurogenesis in vitro and in vivo. *Proceedings of the National Academy of Sciences of the United States of America*, Vol. 99, No.18, (September 2002), pp. 11946-11950, ISSN 00278424
- Jin, K.L.; Mao, X.O.; Nagayama, T.; Goldsmith, P.C. & Greenberg, D.A. (2000). Induction of vascular endothelial growth factor and hypoxia-inducible factor-1alpha by global ischemia in rat brain. *Neuroscience*, Vol.99, No.3, (August 2000), pp. 577-585, ISSN 03064522
- Ke, L.D.; Shi, Y.X.; Im, S.A.; Chen, X. & Yung, W.K. (2000). The relevance of cell proliferation, vascular endothelial growth factor, and basic fibroblast growth factor production to

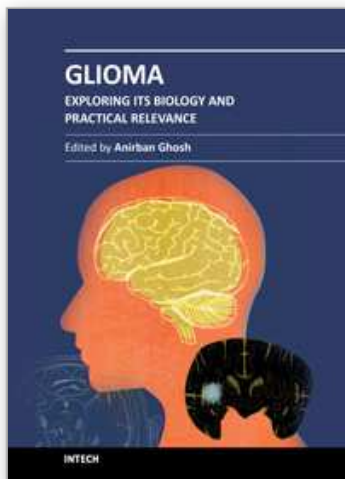
- angiogenesis and tumorigenicity in human glioma cell lines. *Clinical Cancer Research*, Vol. 6, Issue 6, (June 2000), pp. 2562-2572, ISSN 10780432
- Kish, P.E.; Blaivas, M.; Strawderman, M.; Muraszko, K.M.; Ross, D.A.; Ross, B.D. & McMahon, G. (2001). Magnetic resonance imaging of ethyl-nitrosourea-induced rat gliomas: a model for experimental therapeutics of low-grade gliomas. *Journal of Neuro-Oncology*, Vol. 53, No.3, pp. 243-257, ISSN 0167594X
- Kleihues, P.; Burger, P.C.; Aldape, K.D.; Brat, D.J.; Biernat, W.; Bigner, D.D.; Makazato, Y.; Plate, K.H.; Giangaspero, F.; von Deimling, A. & Ohgaki, H. (2007). Glioblastoma, In: *WHO Classification of tumours of the Central Nervous System*, Louis, D.N.; Ohgaki, H.; Wiestler, O.D. & Cavenee, W.K., (Ed.), 33-49. Agency for Research on Cancer (IARC), Lyon
- Kokkinakis, D.M.; Rushing, E.J.; Shareef, M.M.; Ahmed, M.M.; Yang, S.; Singha, U.K. & Luo, J. (2004). Physiology and gene expression characteristics of carcinogen-initiated and tumor-transformed glial progenitor cells derived from the CNS of methylnitrosourea (MNU)-treated Sprague-Dawley rats. *Journal of Neuropathology and Experimental Neurology*, Vol. 63, Issue 11, (November 2004), pp. 1182-1199, ISSN 00223069
- Krum, J.M.; Mani, N. & Rosenstein, J.M. (2002). Angiogenic and astroglial responses to vascular endothelial growth factor administration in adult rat brain. *Neuroscience*. Volume 110, Issue 4, (April 2002), pp. 589-604, ISSN 03064522
- Lafuente, J.V. (2004). Involvement and consequences of Blood Brain Barrier permeability after minimal injury in rat cerebral cortex. In: *Blood-spinal cord and brain barriers in health and disease*. Sharma H.S. (eds), 533-545, Elsevier Academic Press. San Diego, California.
- Lafuente, J.V.; Adán, B.; Alkiza, K.; Garibi, J.M.; Rossi, M. & Cruz-Sánchez, F.F. (1999). Expression of vascular endothelial growth factor (VEGF) and platelet-derived growth factor receptor-beta (PDGFR-beta) in human gliomas. *Journal of Molecular Neuroscience*, Volume 13, Issue 1-2, 1999, pp. 177-185, ISSN 08958696
- Lafuente, J.V.; Alkiza, K.; Garibi, J.M.; Alvarez, A.; Bilbao, J.; Figols, J. & Cruz-Sanchez, F.F. (2000). Biologic parameters that correlate with the prognosis of human gliomas. *Neuropathology*, Vol. 20, No. 3, pp. 176-183, ISSN 09196544
- Lafuente, J.V.; Argandona, E.G. & Mitre, B. (2006). VEGFR-2 expression in brain injury: its distribution related to brain-blood barrier markers. *Journal of Neural Transmission*, Vol. 113, No. 4, (April 2006), pp. 487-496, ISSN 03009564
- Lafuente, J.V.; Bulnes, S.; Mitre, B. & Riese, H.H. (2002). Role of VEGF in an experimental model of cortical micronecrosis. *Amino Acids*, Vol. 23, No. 1-3, 2002, pp. 241-245, ISSN 09394451
- Lafuente, J.V.; Cervos-Navarro, J. & Gutierrez Argandona, E. (1994). Evaluation of BBB damage in an UV irradiation model by endogenous protein tracers. *Acta Neurochirurgica, Supplement*, Vol. 60, pp. 139-141, ISSN 00651419
- Lee, A.; Kessler, J.D.; Read, T.A.; Kaiser, C.; Corbeil, D.; Huttner, W.B.; Johnson, J.E. & Wechsler-Reya, R.J. (2005). Isolation of neural stem cells from the postnatal cerebellum. *Nature Neuroscience*, Vol.8, No.6, (June 2005), pp. 723-729, ISSN 10976256
- Li, Z.; Bao, S.; Wu, Q.; Wang, H.; Eyler, C.; Sathornsumetee, S.; Shi, Q., Cao, Y., Lathia, J., McLendon, R.E., Hjelmeland, A.B. & Rich, J.N. (2009). Hypoxia-inducible factors

- regulate tumorigenic capacity of glioma stem cells. *Cancer Cell*, Vol. 15, No.6, (June 2009), pp. 501-513, ISSN 15356108
- Li, Z.; Wang, H.; Eyler, C.E.; Hjelmeland, A.B. & Rich, J.N. (2009). Turning cancer stem cells inside out: An exploration of glioma stem cell signaling pathways. *Journal of Biological Chemistry*, Vol. 284, No.25, 19 (June 2009), pp.16705-16709, ISSN 00219258
- Lin, B. & Ginsberg, M.D. (2000). Quantitative assessment of the normal cerebral microvasculature by endothelial barrier antigen (EBA) immunohistochemistry: application to focal cerebral ischemia. *Brain Research*, Vol. 865, No. 2, (May 2000), pp. 237-244, ISSN 00068993
- Lois, C. & Alvarez-Buylla, A. (1994). Long-distance neuronal migration in the adult mammalian brain. *Science*, Vol. 264, No.5162, (May 1994), pp. 1145-1148, ISSN 00368075
- Ma, W.; Tavakoli, T.; Chen, S.; Maric, D.; Liu, J.L.; O'Shaughnessy, T.J. & Barker, J.L. (2008). Reconstruction of functional cortical-like tissues from neural stem and progenitor cells. *Tissue Engineering - Part A*. Vol. 14, No.10, (October 2008), pp. 1673-1686, ISSN 19373341
- Machein, M.R. & Plate, K.H. (2004). Role of VEGF in developmental angiogenesis and in tumor angiogenesis in the brain. *Cancer treatment and research*, Vol. 117, 2004, pp. 191-218, ISSN 09273042
- Mack, A. & Robitzki, A. (2000). The key role of butyrylcholinesterase during neurogenesis and neural disorders: An antisense-5'butyrylcholinesterase-DNA study. *Progress in Neurobiology*, Vol. 60, No. 6, (April 2000), pp. 607-628, ISSN
- Marti, H.J.; Bernaudin, M.; Bellail, A.; Schoch, H.; Euler, M.; Petit, E. & Risau, W. (2000). Hypoxia-induced vascular endothelial growth factor expression precedes neovascularization after cerebral ischemia. *American Journal of Pathology*, Vol. 156, No.3, pp. 965-976, ISSN 00029440
- Ment, L.R.; Stewart, W.B.; Fronc, R.; Seashore, C.; Mahooti, S.; Scaramuzzino, D. & Madri, J.A. (1997). Vascular endothelial growth factor mediates reactive angiogenesis in the postnatal developing brain. *Developmental Brain Research*, Vol. 100, No.1, (May 1997), pp. 52-61, ISSN 01653806
- Millauer, B.; Wizigmann-Voos, S.; Schnurch, H.; Martinez, R.; Moller, N.P.; Risau, W. & Ullrich, A. (1993). High affinity VEGF binding and developmental expression suggest Flk-1 as a major regulator of vasculogenesis and angiogenesis. *Cell*, Vol. 72, No.6, pp. 835-846, ISSN 00928674
- Mizrak, D.; Brittan, M. & Alison, M.R. (2008). CD133: molecule of the moment. *Journal of Pathology*, Vol. 214, No.1, (January 2008), pp. 3-9, ISSN 00223417
- Müller, F.J.; Snyder, E.Y & Loring, J.F. (2006). Gene therapy: Can neural stem cells deliver?. *Nature Reviews Neuroscience*, Vol.7, No.1, (January 2006), pp. 75-84, ISSN 1471003X
- Nadig, R.R. (2009). Stem cell therapy-Hype or hope? A review. *Journal of Conservative Dentistry*, Vol.12, No.4, pp. 131-8, ISSN 0972-0707
- Neufeld, G.; Cohen, T.; Gengrinovitch, S. & Poltorak, Z. (1999). Vascular endothelial growth factor (VEGF) and its receptors. *FASEB Journal*, (January 1999);Vol.13, No.1, pp. 9-22, ISSN 0892-6638
- Nunes, M.C.; Roy, N.S.; Keyoung, H.M.; Goodman, R.R.; McKhann, G.; Jiang, L.; Kang, J.; Nedergaard, M. & Goldman, S.A. (2003). Identification and isolation of multipotential neural progenitor cells from the subcortical white matter of the adult

- human brain. *Nature Medicine*, Vol. 9, No.4, (April 2003), pp. 439-447, ISSN 10788956
- O'Brien, C.A.; Pollett, A.; Gallinger, S. & Dick, J.E. (2007). A human colon cancer cell capable of initiating tumour growth in immunodeficient mice. *Nature*, Vol. 445, No.7123, (January 2007), pp. 106-110, ISSN 00280836
- Ohgaki, H. & Kleihues, P. (2009). Genetic alterations and signaling pathways in the evolution of gliomas. *Cancer Science*, Vol. 100, No.12, December 2009, pp. 2235-2241, ISSN 13479032
- O'Neill, J.P. (2000). DNA damage, DNA repair, cell proliferation, and DNA replication: how do gene mutations result?. *Proceedings of the National Academy of Sciences of the United States of America*, Vol. 97, No.21, (October 2000), pp. 11137-11139. ISSN
- Ortuzar, N.; Argandoña, E.G.; Bengoetxea, H. & Lafuente, J.V. (2011). Combination of intracortically administered VEGF and environmental enrichment enhances brain protection in developing rats. *Journal of Neural Transmission*, Vol.118, No.1, (January 2011), pp. 135-144, ISSN 03009564
- Osuka, K.; Watanabe, Y.; Usuda, N.; Nakazawa, A.; Tokuda, M.; Yoshida, J. (2004). Modification of endothelial NO synthase through protein phosphorylation after forebrain cerebral ischemia/reperfusion. *Stroke*, Vol. 35, No.11, (November 2004), pp. 2582-2586, ISSN 00392499
- Papadopoulos, M.C.; Saadoun, S.; Binder, D.K.; Manley, G.T.; Krishna, S. & Verkman, A.S. (2004). Molecular mechanisms of brain tumor edema. *Neuroscience*, Vol. 129, No.4, pp. 1011-1020, ISSN 03064522
- Pistollato, F.; Abbadi, S.; Rampazzo, E.; Persano, L.; Della Puppa, A.; Frasson, C.; Sarto, E.; Scienza, R.; D'Avella, D. & Basso, G. (2010). Intratumoral hypoxic gradient drives stem cells distribution and MGMT expression in glioblastoma. *Stem Cells*, Vol. 28, No.6, (June 2010), pp. 851-862, ISSN 10665099
- Plate, K.H. (1999). Mechanisms of angiogenesis in the brain. *Journal of Neuropathology and Experimental Neurology*, Vol. 58, No.4, (April 1999), pp. 313-320, ISSN 00223069
- Reya, T.; Morrison, S.J.; Clarke, M.F. & Weissman, I.L. (2001). Stem cells, cancer, and cancer stem cells. *Nature*, Vol. 414, No.6859, (November 2001), pp. 105-111, ISSN 00280836
- Reynolds, B.A., Weiss, S. (1992). Generation of neurons and astrocytes from isolated cells of the adult mammalian central nervous system. *Science*, Vol. 255, No.5052, 1992, pp. 1707-1710, ISSN 00368075
- Ricci-Vitiani, L.; Pallini, R.; Biffoni, M.; Todaro, M.; Invernici, G.; Cenci, T.; Maira, G.; Parati, E.A.; Stassi, G.; Larocca, L.M. & De Maria, R. (2010). Tumour vascularization via endothelial differentiation of glioblastoma stem-like cells. *Nature*, Vol. 468, No.7325, (December 2010), pp. 824-830, ISSN 00280836
- Rich, J.N. (2007). Cancer stem cells in radiation resistance. *Cancer Research*, Vol. 67, No.19, (October 2007), pp. 8980-8984, ISSN 00085472
- Risau, W. & Flamme, I. (1995). Vasculogenesis. *Annual Review of Cell and Developmental Biology*, Vol. 11, 1995, pp. 73-91, ISSN 10810706
- Risau, W. (1997). Mechanisms of angiogenesis. *Nature*, Vol. 386, No.6626, pp. 671-674, ISSN 00280836
- Rosenstein, J.M. & Krum, J.M. (2004). New roles for VEGF in nervous tissue-beyond blood vessels. *Exp Experimental Neurology*, Vol. 187, No.2, (June 2004), pp. 246-253, ISSN 00144886

- Ruoslahti, E. (2002). Specialization of tumour vasculature. *Nature Reviews Cancer*, Vol. 2, No.2, (February 2002), pp. 83-90, ISSN 1474175X
- Schiffer, D.; Annovazzi, L.; Caldera, V. & Mellai, M. (2010). On the origin and growth of gliomas. *Anticancer Research*, Vol. 30, No.6, (June 2010), pp. 1977-1998, ISSN 02507005
- Schlageter, K.E.; Molnar, P.; Lapin, G.D. & Groothuis D.R. (1999). Microvessel organization and structure in experimental brain tumors: microvessel populations with distinctive structural and functional properties. *Microvascular Research*, Vol. 58, No.3, (November 1999), pp. 312-328, ISSN 00262862
- Semenza, G.L. (2003). Targeting HIF-1 for cancer therapy. *Nature Reviews Cancer*, Vol. 3, No.10, (October 2003), pp. 721-732, ISSN 1474175X
- Shen, G.; Shen, F.; Shi, Z.; Liu, W.; Hu, W.; Zheng, X.; Wen, L. & Yang, X. (2008). Identification of cancer stem-like cells in the C6 glioma cell line and the limitation of current identification methods. *In Vitro Cellular and Developmental Biology – Animal*, Vol. 44, No.7, (August 2008), pp. 280-289, ISSN 10712690
- Singh, S.K.; Clarke, I.D.; Terasaki, M.; Bonn, V.E.; Hawkins, C.; Squire, J. & Dirks, P.B. (2003). Identification of a cancer stem cell in human brain tumors. *Cancer Research*, Vol. 63, No.18, (September 2003), pp. 5821-5828, ISSN 00085472
- Soda, Y.; Marumoto, T.; Friedmann-Morvinski, D.; Soda, M.; Liu, F.; Michiue, H.; Pastorino, S.; Yang, M.; Hoffman, R.M.; Kesari, S. & Verma, I.M. (2011). Transdifferentiation of glioblastoma cells into vascular endothelial cells. *Proceedings of the National Academy of Sciences of the United States of America*, Vol. 108, Issue 11, (March 2011), pp. 4274-4280, ISSN 00278424
- Sternberger, N.H.; Sternberger, L.A.; Kies, M.W. & Shear, C.R. (1989). Cell surface endothelial proteins altered in experimental allergic encephalomyelitis. *Journal of Neuroimmunology*, Vol. 21, No.2-3, pp. 241-248, ISSN 01655728
- Storkebaum, E.; Lambrechts, D. & Carmeliet, P. (2004). VEGF: once regarded as a specific angiogenic factor, now implicated in neuroprotection. *BioEssays*, Vol. 26, No.9, (September 2004), pp. 943-954, ISSN
- Takebe, N. & Ivy, S.P. (2010). Controversies in cancer stem cells: targeting embryonic signaling pathways. *Clinical Cancer Research*, Vol. 16, No.12, (June 2010), pp. 3106-3112, ISSN 10780432
- Tamaki, S.; Eckert, K.; He, D.; Sutton, R.; Doshe, M.; Jain, G.; Tushinski, R.; Reitsma, M.; Harris, B.; Tsukamoto, A.; Gage, F.; Weissman, I. & Uchida, N. (2002). Engraftment of sorted/expanded human central nervous system stem cells from fetal brain. *Journal of Neuroscience Research*. Vol. 69, No.6, (September 2002), pp. 976-986, ISSN 03604012
- Till, J.E. & McCulloch, E.A. (2011). A direct measurement of radiation sensitivity of normal mouse bone marrow cells. 1961. *Radiation research*, Vol. 175, No.2, (February 2011), pp. 145-149, ISSN 19385404
- Tonini, T.; Rossi, F. & Claudio, P.P. (2003) Molecular basis of angiogenesis and cancer. *Oncogene*, Vol. 22, No.43, (October 2003), pp. 6549-6556, ISSN 09509232
- Vajkoczy, P. & Menger, M.D. (2004). Vascular microenvironment in gliomas. *Cancer treatment and research*, Vol. 117, pp. 249-262, ISSN 09273042
- Vaquero, J.; Oya, S.; Coca, S. & Zurita, M. (1994). Experimental induction of primitive neuroectodermal tumours in rats: a re-appraisal of the ENU-model of

- neurocarcinogenesis. *Acta Neurochirurgica*, Vol. 131, No.3-4, pp. 294-301, ISSN 00016268
- Wang, R.; Chadalavada, K.; Wilshire, J.; Kowalik, U.; Hovinga, K.E.; Geber, A.; Fligelman, B.; Leversha, M.; Brennan, C. & Tabar, V. (2010). Glioblastoma stem-like cells give rise to tumour endothelium. *Nature*, Vol. 468, No.7325, (December 2010), pp. 829-835, ISSN 00280836
- Whitman, M.C. & Greer, C.A. (2009). Adult neurogenesis and the olfactory system. *Progress in Neurobiology*, Vol. 89, No.2, (October 2009), pp. 162-175, ISSN 03010082
- Yancopoulos, G.D.; Davis, S.; Gale, N.W.; Rudge, J.S.; Wiegand, S.J. & Holash, J. (2000). Vascular-specific growth factors and blood vessel formation. *Nature*, Vol. 407, No.6801, (September 2000), pp. 242-248, ISSN 00280836
- Yoshimura, F.; Kaidoh, T.; Inokuchi, T. & Shigemori, M. (1998). Changes in VEGF expression and in the vasculature during the growth of early-stage ethylnitrosourea-induced malignant astrocytomas in rats. *Virchows Archiv*, Vol.433, No.5, pp. 457-463, ISSN 09456317
- Zagzag, D.; Friedlander, D.R.; Margolis, B.; Grumet, M.; Semenza, G.L.; Zhong, H.; Simons, J.W.; Holash, J.; Wiegand, S.J. & Yancopoulos, G.D. (2000). Molecular events implicated in brain tumor angiogenesis and invasion. *Pediatric Neurosurgery*, Vol. 33, No.1, pp. 49-55, ISSN 10162291
- Zeppernick, F.; Ahmadi, R.; Campos, B.; Dictus, C.; Helmke, B.M.; Becker, N.; Lichter, P.; Unterberg, A.; Radlwimmer, B. & Herold-Mende, C.C. (2008). Stem cell marker CD133 affects clinical outcome in glioma patients. *Clinical Cancer Research*, Vol.14, No.1, (January 2008), pp. 123-129, ISSN 10780432
- Zhu, C.; Ghabriel, M.N.; Blumbergs, P.C.; Reilly, P.L.; Manavis, J.; Youssef, J.; Hatami, S. & Finnie, J.W. (2001). Clostridium perfringens prototoxin-induced alteration of endothelial barrier antigen (EBA) immunoreactivity at the blood-brain barrier (BBB). *Experimental Neurology*, Vol.169, No. 1, pp. 72-82, ISSN 00144886
- Ziche, M. & Morbidelli, L. (2009). Molecular regulation of tumour angiogenesis by nitric oxide. *European Cytokine Network*, Vol.20, No.4, (December 2009), pp. 164-170, ISSN 11485493
- Zook, B.C.; Simmens, S.J. & Jones, R.V. (2000). Evaluation of ENU-induced gliomas in rats: nomenclature, immunochemistry, and malignancy. *Toxicologic Pathology*, Vol.28, No. 1, 2000, pp. 193-201, ISSN 01926233



Glioma - Exploring Its Biology and Practical Relevance

Edited by Dr. Anirban Ghosh

ISBN 978-953-307-379-8

Hard cover, 486 pages

Publisher InTech

Published online 02, November, 2011

Published in print edition November, 2011

The title 'Glioma - Exploring Its Biology and Practical Relevance' is indicative of its content. This volume contains 21 chapters basically intended to explore glioma biology and discussing the experimental model systems for the purpose. It is hoped that the present volume will provide supportive and relevant awareness and understanding on the fundamental advances of the subject to the professionals from any sphere interested about glioma.

How to reference

In order to correctly reference this scholarly work, feel free to copy and paste the following:

Susana Bulnes, Harkaitz Bengoetxea, Naiara Ortuzar, Enrike G. Argandoña and José Vicente Lafuente (2011). Endogenous Experimental Glioma Model, Links Between Glioma Stem Cells and Angiogenesis, Glioma - Exploring Its Biology and Practical Relevance, Dr. Anirban Ghosh (Ed.), ISBN: 978-953-307-379-8, InTech, Available from: <http://www.intechopen.com/books/glioma-exploring-its-biology-and-practical-relevance/endogenous-experimental-glioma-model-links-between-glioma-stem-cells-and-angiogenesis>

INTECH
open science | open minds

InTech Europe

University Campus STeP Ri
Slavka Krautzeka 83/A
51000 Rijeka, Croatia
Phone: +385 (51) 770 447
Fax: +385 (51) 686 166
www.intechopen.com

InTech China

Unit 405, Office Block, Hotel Equatorial Shanghai
No.65, Yan An Road (West), Shanghai, 200040, China
中国上海市延安西路65号上海国际贵都大饭店办公楼405单元
Phone: +86-21-62489820
Fax: +86-21-62489821

© 2011 The Author(s). Licensee IntechOpen. This is an open access article distributed under the terms of the [Creative Commons Attribution 3.0 License](https://creativecommons.org/licenses/by/3.0/), which permits unrestricted use, distribution, and reproduction in any medium, provided the original work is properly cited.

IntechOpen

IntechOpen