

We are IntechOpen, the world's leading publisher of Open Access books Built by scientists, for scientists

6,900

Open access books available

186,000

International authors and editors

200M

Downloads

Our authors are among the

154

Countries delivered to

TOP 1%

most cited scientists

12.2%

Contributors from top 500 universities



WEB OF SCIENCE™

Selection of our books indexed in the Book Citation Index
in Web of Science™ Core Collection (BKCI)

Interested in publishing with us?
Contact book.department@intechopen.com

Numbers displayed above are based on latest data collected.
For more information visit www.intechopen.com



Proteomics in Peritoneal Dialysis

Hsien-Yi Wang^{1,2}, Hsin-Yi Wu³ and Shih-Bin Su^{4,5}

¹*Department of Nephrology, Chi-Mei Medical Center, Tainan*

²*Department of Sports Management, College of Leisure and Recreation Management, Chia Nan University of Pharmacy and Science, Tainan*

³*Institute of Chemistry, Academia Sinica, Taipei*

⁴*Department of Family Medicine, Chi-Mei Medical Center, Tainan*

⁵*Department of Biotechnology, Southern Taiwan University, Tainan Taiwan*

1. Introduction

Relatively little is known about proteins in peritoneal effluent, that are lost or changed during peritoneal dialysis (PD) and in different diseases, leaving various unclear questions. Biomarkers that can indicate damages caused by peritoneal dialysis, like cancer antigen 125 and interleukin-6 are some examples. Therefore, tools such as proteomic approaches that can globally identify, characterize, and quantify a set of proteins and their changes in peritoneal dialysate, could shed light to the mechanisms of peritonitis and membrane damage. The availability of fluid from dialysis for study and the potential importance of specific protein change during peritoneal dialysis making this a potentially fruitful area for further observation. Since the renal community is embracing proteomic technologies at an increasing rate, growing numbers of studies that would be carried out through this process can be envisaged. In this chapter we intend to introduce basic proteomic tools and highlight important advances in peritoneal dialysis using proteomic approaches as well as the future perspective that proteomic tools can contribute in the field of peritoneal dialysis

2. Proteomic tools

In recent years, proteomic analyses of particular biological samples or clinical samples have drawn much interest and provided much information. Proteomic tools such as two dimensional gel electrophoresis (2DE) and mass spectrometry analysis have been widely applied in the study of body fluids, e.g. cerebrospinal fluid, pleural and pericardial effusions (Liu et al. 2008; Tyan et al. 2005a; Tyan et al. 2005b), and urine (Bennett et al. 2008; Tan et al. 2008). For peritoneal dialysis, several issues have been addressed as described in the following sections. The advantages and disadvantages of the various techniques have been reviewed previously (Fliser et al. 2007; Mischak et al. 2007).

2.1 Two dimensional gel electrophoresis (2DE)

Proteins are separated by isoelectric point and size. The protein spot can be visualized by gel staining. It is widely available and the posttranslational modification of the protein can be

revealed by separation of charge forms. However, low-abundance, large, and hydrophobic proteins are difficult to be detected. 2DE is technically demanding and time-consuming. The low number of independent datasets and the high variability of the gel make the definition of biomarkers difficult or even impossible. 2DE with fluorescent labeling of proteins before separation in gel (DIGE) has been proposed to improve reproducibility. Additional expense for fluorescent dyes and three color imaging system is required.

2.2 Liquid chromatography-tandem mass spectrometry (LC-MS/MS)

Proteins are digested before separation by liquid chromatography coupled to MS instruments. MS detection is more sensitive than 2DE. It is easily automated, allowing analyzing a series of samples. Drawback in comparison to 2DE is that information on the molecular mass of the actual biomarker as well as on any posttranslational modifications (PTM) is generally lost. This requires additional tools.

2.3 Surface-enhanced laser desorption ionization (SELDI)

Proteins are bound to affinity surface on a MALDI chip. Samples can be enriched for specific low-abundance proteins. Bound proteins are detected in a mass spectrometer. The SELDI technology draws a lot of interest because of its ease of use and its high throughput for biomarker discovery. However, the low-resolution of the mass spectrometer, the large amount of variability between labs, and its lack of reproducibility, hamper its potential clinical application (McLerran et al. 2008).

2.4 Capillary electrophoresis coupled to mass spectrometry (CE-MS)

Proteins were separated by elution time in CE and by size in MS. High reproducibility, robustness, high resolution and sensitivity make it a potential technique for biomarker discovery. Its limitation is that proteins can't be identified without additional steps and only proteins/peptides <20 kDa can be analyzed.

3. Analyses of peritoneal dialysis by proteomics tools

3.1 Preliminary proteomic studies on peritoneal dialysis effluent

A descriptive study was performed on the dialysate of nine paediatric PD children patients to obtain a representative overview of the proteome of peritoneal fluid (Raaijmakers et al. 2008). None of the patients suffered from peritonitis in the 3 months before the collection. Proteins were resolved on the SDS-PAGE and the protein spots identification was achieved by nanoLC-MS/MS. A total of 189 proteins were identified, with 88 proteins shared by all the patients. The function of these shared proteins were classified into 8 classes. As listed in Table 1, acute phase proteins, complement factors, hormones, coagulation factors, and apolipoproteins were found.

These factors were related to the number of frequently occurring proteins in the dialysate (Pecoits-Filho et al. 2004; Reddingius et al. 1995; Saku et al. 1989; van der Kamp et al. 1999). The proteome of PD fluid also reveals some interesting proteins, Gelsolin, intelectin, and paraxonase, which could possibly involve in protecting the mesothelial cell damage and against infection, against parasites, and anti-atherogenic capacities, respectively. The proteome of PD may help understand the functional mechanism of the peritoneum.

Classification	Different proteins	Mean emPAI	SD
1. Acute phase proteins	24	1435	706
(a) Antiproteases	13	84.4	18.8
(b) Transport proteins	3	1333	713
(c) Other acute phase proteins	8	18.4	4.26
2. Complement factors	18	31.9	7.9
3. Apolipoproteins	7	40.4	22.8
4. Coagulation proteins	8	6.46	1.73
5. Extracellular matrix proteins	8	6.74	2.23
6. Hormone and vitamin binding proteins	5	19.8	7.98
7. Enzymes	4	7.02	1.38
8. Others	14	25.2	9.8

Table 1. Protein classification according to function of the proteins present in all the patients, relative abundances are given with mean emPAI values [Adapted from (Raaijmakers et al. 2008)]

3.2 Dialysis-related peritonitis

Peritonitis caused by CAPD may lead to peritoneal abnormalities. To search for potential biomarkers for peritonitis, Lin et al. have compared the proteome of peritoneal dialysate from 16 patients with and without peritonitis (Lin et al. 2008). Proteins were separated on 2DE, indicating several differential expressed spots (Figure 1).

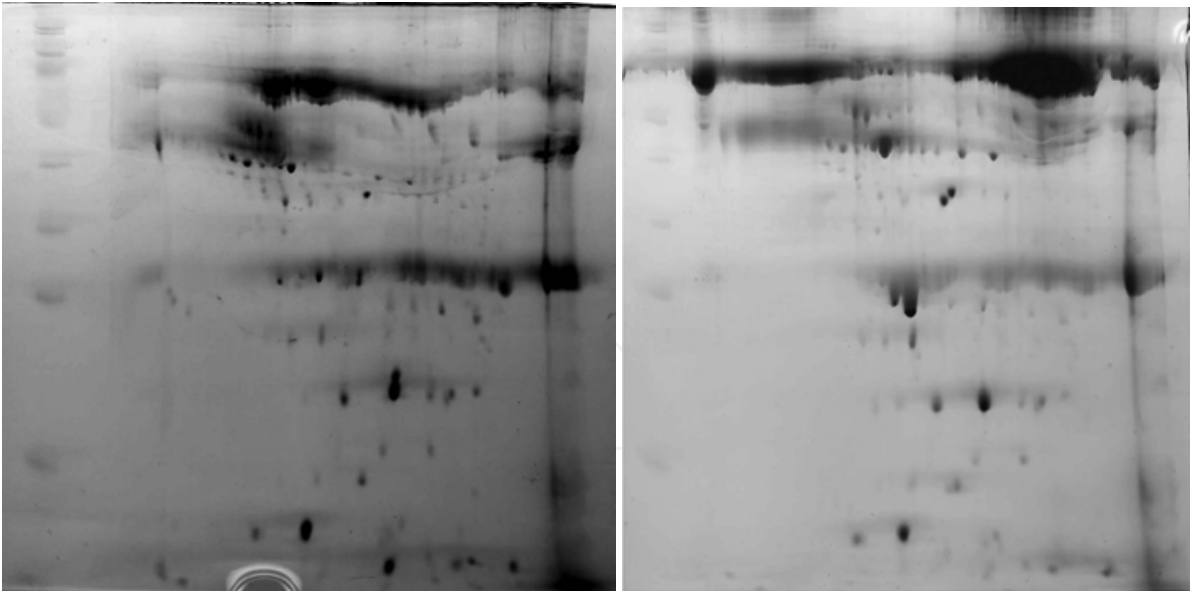


Fig. 1. Protein map, obtained by 2DE, of protein lysates prepared from CAPD dialysis effluent without (left) and with (right) peritonitis. Proteins are first separated according to their pI using iso-electric focusing and then separated according to their respective molecular weight using (10%) SDS-PAGE. [Adapted from (Lin et al. 2008)]

Samples were also analyzed by SELDI-TOF MS, revealing that signal peak at m/z of 11117.4 only appeared in the peritonitis sample. This signal was identified as β 2-microglobulin by

using MALDI-TOF/TOF MS. Protein β 2-microglobulin has been linked to CAPD peritonitis in previous studies. In CAPD dialysate from patients with bacterial peritonitis, β 2-microglobulin showed higher levels than in those without peritonitis (Carozzi et al. 1990). Minami et al. the level of β 2-microglobulin in the peritoneal dialysate was correlated with peritoneal injural (Minami et al. 2007). Using the protein profile approach, this study confirmed β 2-microglobulin as a biomarker for CAPD peritonitis.

3.3 Different types of peritoneal membranes

The efficacy and clinical outcome of CAPD depend on peritoneal membrane function. Peritoneal membranes can be classified as high (H), high average (HA), low average (LA), and low (L) transporters by using peritoneal equilibration test (PET). Whether there is a difference in proteins removed by different types of peritoneal membranes has been discussed in a study conducted by Sritippayawan et al. (Sritippayawan et al. 2007). They performed a proteomic analysis of peritoneal dialysate in CAPD patients with H, HA, LA, and L transport rates. Five patients were included for each group, makes up to 20 patient samples. Proteins from each sample were resolved in each 2D-gel (total 20 gels). Representative gels are shown in Figure 2. After gel visualization by staining and spot quantitation by image analysis software, the mean values of individual parameters were compared among the four different groups. Five proteins were found to show differed levels among groups. They were identified as serum albumin in a complex with myristic acid and triiodobenzoic acid, α 1-antitrypsin, complement component C4A, immunoglobulin κ light chain, and apolipoprotein A-I by MALDI-Q-TOF MS and MS/MS analyses. ELISA was used to confirm the difference expression of C4A and immunoglobulin κ in a set of other 24 patients. Functional significance of differential levels of these proteins may associate with dialysis adequacy, residual renal function, risk of peritonitis, and nutritional status. The level of serum albumin in a complex with myristic acid and triiodobenzoic acid was higher in the L LA groups, implying that the modified or complexed form of albumin may be associated with peritoneal membrane transport. The level of C4A was higher in H and HA group. In peritoneal dialysate, C4A originates from vascular leakage, resulting in the lower C4A level in L group. The immunoglobulin κ light chain VLJ region, whose level was higher in H and HA groups also tended to be higher in patients with peritonitis. The higher level of immunoglobulin κ light chain VLJ region might be related to poorer function of neutrophils. Patients in H and HA group also had higher apolipoprotein A-I in peritoneal dialysate compared to L and LA groups, which may explain that high solute transporters are prone to develop atherosclerosis.

3.4 The role of glucose in peritoneal dialysis

The abdominal cavity is covered by the mesothelial cell (MC) layer. Peritoneal dialysis fluid may remove solutes and fluid from the patients due to its hypertonicity. Long period and frequent peritoneal dialysis could lead to structural and functional alterations of the MC layer, leading to a final failure of peritoneal dialysis (Davies et al. 2001; Heimburger et al. 1990; Ho-dac-Pannekeet et al. 1997; Imholz et al. 1993; Williams et al. 2002). Hperosmolarity in peritoneal dialysis effluents is generated by high concentrations of glucose which could be degraded into carbonyl compounds as various glucose degradation products (GDPs) after heat sterilization (Linden et al. 1998; Nilsson-Thorell et al. 1993; Pischetsrieder 2000; Witowski and Jorres 2000; Witowski et al. 2003). These GDPs are reported as being

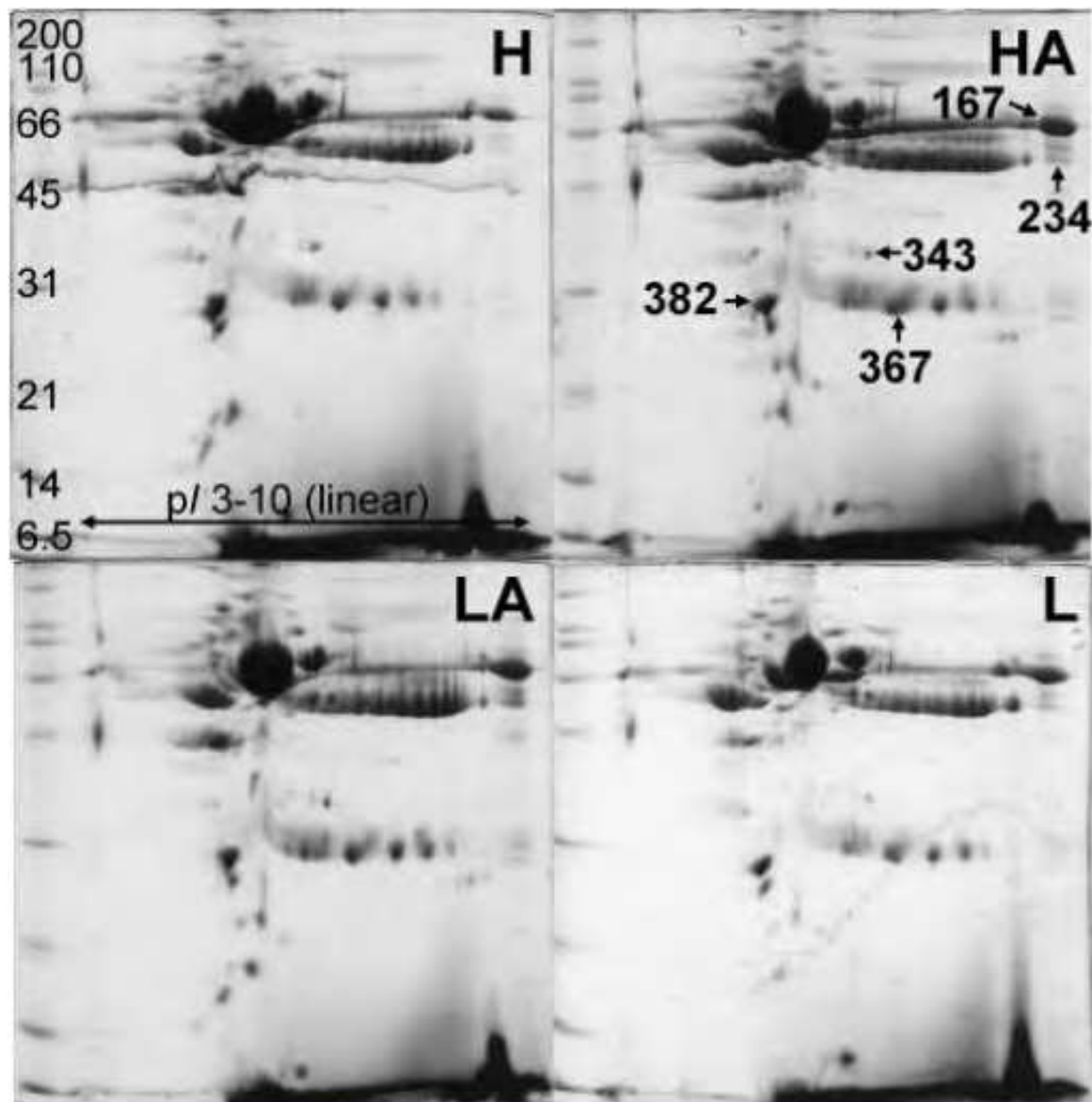


Fig. 2. Representative 2-D gel images of the PDE proteins derived from different types of peritoneal membranes. Proteins were precipitated with 75% ethanol, and an equal amount of total protein (200 íg) obtained from each patient was resolved in each 2-D gel (n) 5 gels for each group; total n) 20). The resolved protein spots were visualized by CBB-R250 stain. Quantitative intensity analysis and ANOVA with Tukey’s posthoc multiple comparisons revealed five protein spots whose intensity levels significantly differed among groups (see Table 2). These protein spots (labeled with numbers) were subsequently identified by MALDI-Q-TOF MS and MS/MS analyses. [Adapted from (Sritippayawan et al. 2007)]

mitogenic and cytotoxic. Thus, peritoneal dialysis effluent is considered as a significant stressor for the MC layer (Breborowicz et al. 1995; Wieslander et al. 1991). To address this issue, a cell line derived from the MC layers was used as a model to study the glucose-related pathways induced by high concentration of glucose (Lechner et al. 2010). Using two-dimensional fluorescence-difference gel electrophoresis (DIGE), altered proteins upon glucose stress in Met-5A cell were revealed. A total of 947 spots were present in 32 gels (16 controls, 16 glucose stress). A representative gel is shown in Figure 3. Among them, 140

spots were of differential expression under full-peritoneal dialysis fluid stress consisting of high glucose concentration, pH 5.8, and the presence of GDPs, when compared to untreated cells, of which 100 proteins can be identified by MALDI-MS and MS/MS techniques. Further studies on these factors suggested that glucose exposure alone was not sufficient to explain the differential abundance of these proteins, supporting the hypothesis that stressors, pH, lactate, and GDPs, might have essential impact for activation of the glucose-related pathways. By comparing peritoneal dialysis effluent with different glucose concentrations, four proteins were found to be under-expressed in the highest osmolar solution. All of them were considered to be involved in the inflammatory processes.



Fig. 3. CBB stained 2-DE gel of a MeT-5A cell lysate. Proteins, differently abundant after full-PDF exposure and assigned to significantly enriched glucose associated pathways, are indicated with a circle and labeled with their Swiss-Prot entry names. Protein isoforms are distinguished by numbers in brackets. [Adapted from (Lechner et al. 2010)]

Another laboratory works on analyzing the protein composition of peritoneal fluid from patients receiving peritoneal dialysis with different concentration of glucose (Cuccurullo et al. 2010). Peritoneal dialysis effluent with different glucose concentrations were revealed by 2DE. The representative gels for each group are shown in Figure 4.

Combining the data from 2DE and shotgun proteomics analysis, 151 non-redundant identifications were reached. Through the cellular component analysis, proteins related to extracellular region were over-expressed. As for the molecular function and biological process, proteins associated with protein binding and inflammatory processes were over-represented. Four proteins, Alpha-1-antitrypsin (1603), fibrinogen beta chain (4308- 5303), transthyretin (4303 and 2101), and apolipoprotein A-IV (4208) were found to be under-

expressed in the highest osmolar solution. The result provides potential targets for future therapeutic implementation in preventing inflammatory processes induced by the exposure to dialysis solutions.

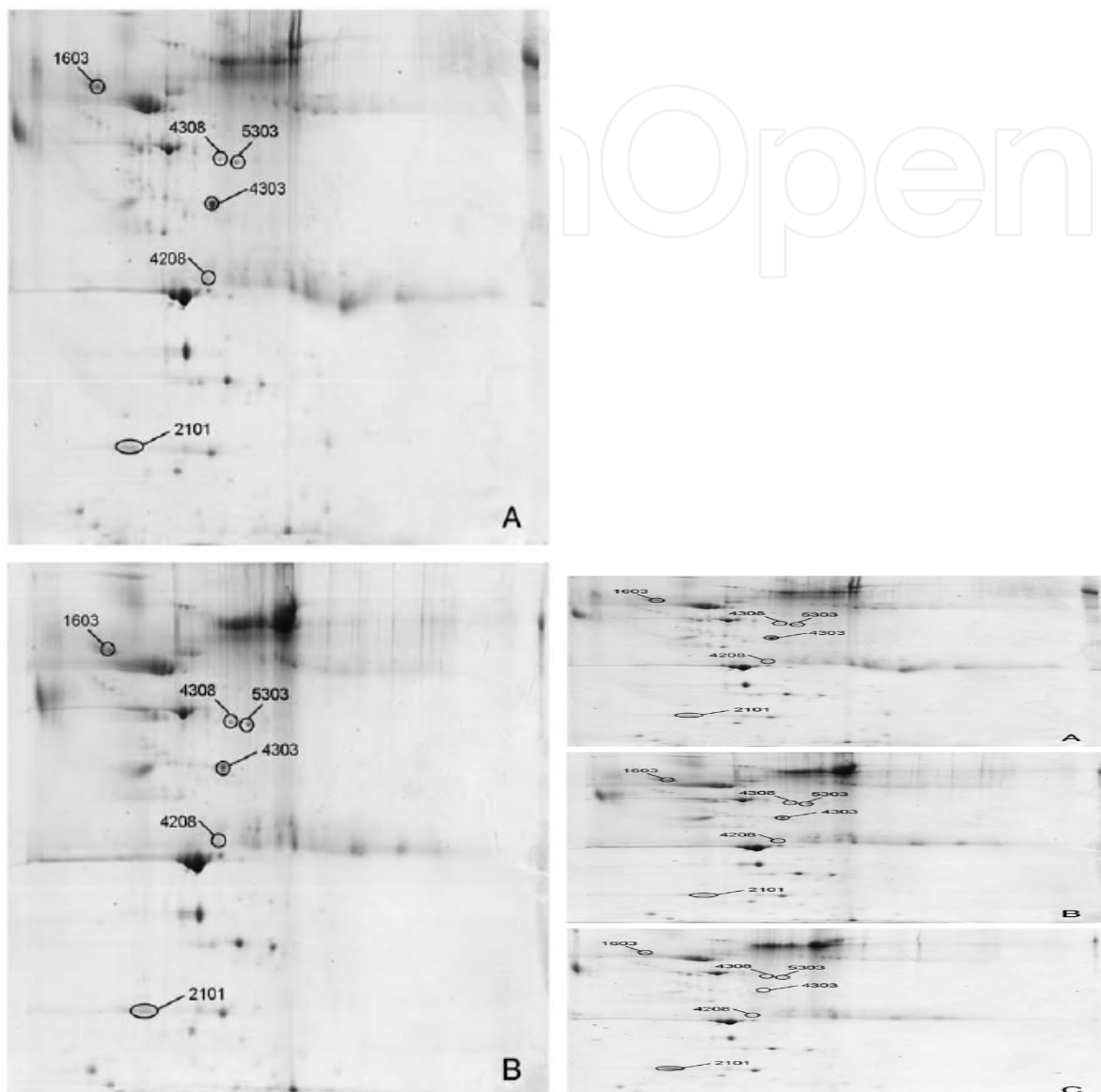


Fig. 4. Representative 2D gel images of PDE protein profiles from one (out of five) adult patient treated with peritoneal dialysis solutions differing for glucose percentages (A = glucose percentage 1.5%, B = glucose percentage 2.5%, C = glucose percentage 4.25%). Circled spots correspond to proteins whose expression undergoes quantitative changes. Alpha-1-antitrypsin (1603), fibrinogen beta chain (4308– 5303), transthyretin (4303 and 2101), apolipoprotein A-IV (4208). [Adapted from (Cuccurullo et al. 2010)]

3.5 Peritoneal dialysate from diabetic patients

Fluid overload related cardiovascular disease is one important factor to mortality in patients receiving CAPD (Brown et al. 2003). Other proposed mechanism is the glucotoxicity cause by the high concentration of glucose contained in PD fluid (Sitter and Sauter 2005).

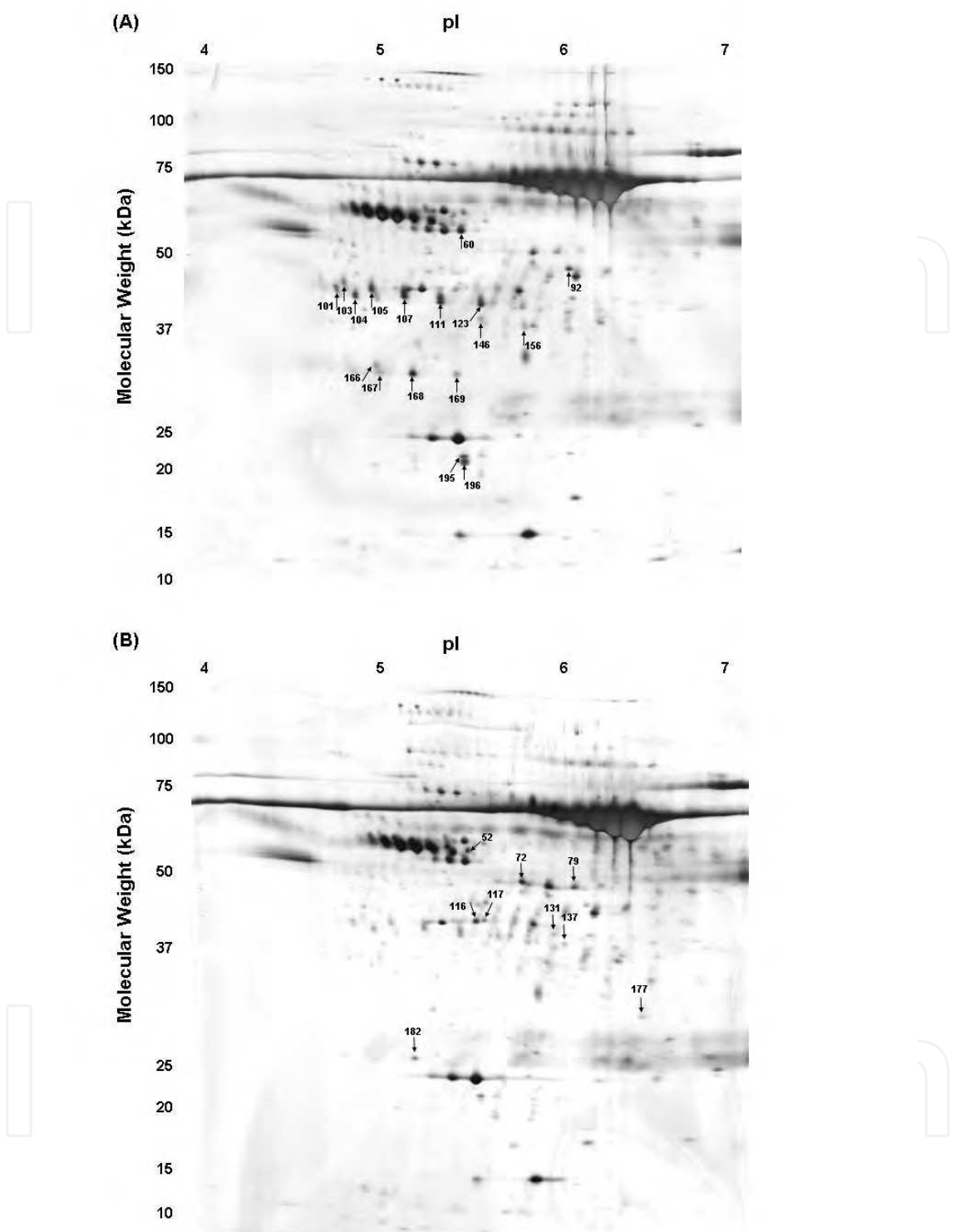


Fig. 6. Representative 2DE gels for the DM samples (A) and the non-DM (B) samples. DM samples and non-DM samples were pooled separately for 2DE analysis (pH 4-7). A total of 120 μ g was used. The analysis of each group was repeated six times and two representative gels are shown. An average of 200 protein spots were detected in both gels. Among these, 17 spots were found with higher levels in the peritoneal dialysate (indicated in A by arrows) and 9 spots were found with higher levels in the control samples (indicated in B by arrows) [Adapted from (Wang et al. 2010)]

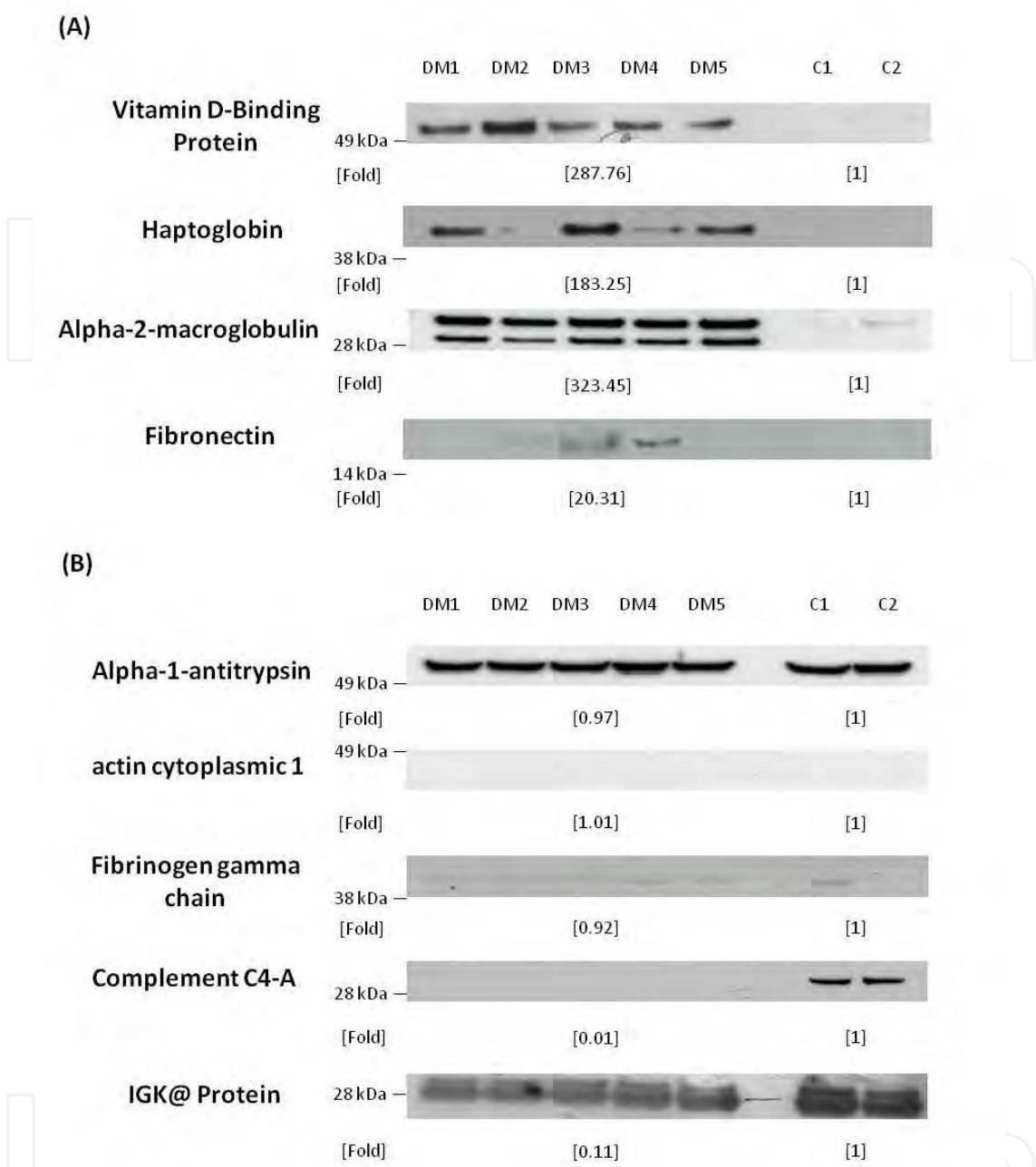


Fig. 7. Western blotting of the identified proteins in five individual DM samples and two individual control samples: the mean band density of five DM samples and two control samples were calculated and fold change between the two groups was calculated by dividing the mean band density of the DM samples by that of the control samples; the mean density of the control group was adjusted as 1, and the fold change was put in the bracket below each set of bands [(A) proteins, vitamin D-binding protein, haptoglobin and α -2-microglobulin show higher expression levels in the DM samples than in the control samples; (B) proteins, complement C4-A and IGK@ protein show higher expression levels in the two control samples than in the five DM samples]. [Adapted from (Wang et al. 2010)]

However, the details of the pathogenic mechanism remain unclear. Protein changes between peritoneal dialysate from specific disease and normal peritoneal fluids may shed light to better understanding of the mechanism involved in peritoneal damage resulting from

peritoneal dialysis. For clinical application, altered proteins in the peritoneum may function as biomarkers for monitoring which functions as a non-invasive way of detecting peritoneal damage. Wang et al. have compared the diabetic peritoneal dialysate versus normal peritoneal fluid (Wang et al. 2010). From the 2DE (as shown in Figure 6), 26 protein spots were considered altered between two sample groups.

According to the western confirmation results (Figure 7), vitamin D-binding protein, haptoglobin and α -2-microglobulin showed higher levels in the DM samples, while complement C4-A and IGK@ protein were of lower levels compared to the control samples. The work concluded that the loss of some specific proteins may be due to a change in the permeability of the peritoneal membrane to middle-sized proteins or leakage from peritoneal inflammation. It has been reported that PD leads to loss of DBP, and this causes loss of vitamin D. Vitamin D deficiency results in reduced insulin secretion in rats and humans, and its replacement improves B cell function and glucose tolerance (Boucher et al. 1995; Kumar et al. 1994; Norman et al. 1980; Tanaka et al. 1984). Thus the level of Vitamin D binding protein should be monitored after long-term PD. It has been suggested that haptoglobin may play a role in defending against haemoglobin toxicity, mainly renal toxicity (Lim et al. 2000). The observation of α -2-microglobulin in dialysate may be indicative of high levels of α -2-microglobulin in serum and a potential for amyloidosis. Complement activation happens in the peritoneal cavity in patients on chronic PD (Reddingius et al. 1995; Young et al. 1993), suggesting that local production of complement may be a possible inflammatory injury effectors in the initiation of chronic peritoneal damage. Lower levels of complement C4-A in dialysis effluent may indicate the beginning of peritoneal sclerosis. The limited studies of the role of IGK@ protein in the peritoneum posted this protein a novel target for further investigation of its defect in dialysate, which may provide a new insight for peritoneal change or damage during PD.

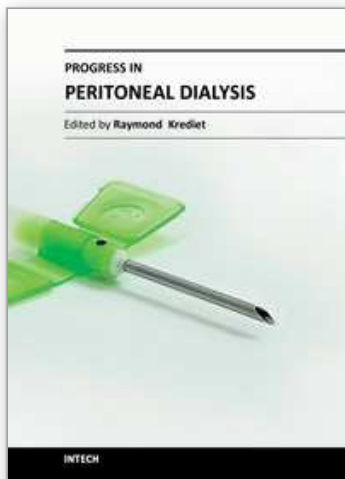
4. Concluding remarks and outlook

Recent publication of potential biomarkers is only based on limited datasets in the absence of any validation. Future implementation of proteomics to the peritoneal dialysis will depend largely on establishment of generally accepted validity of the identified biomarkers. Development of standardization procedures for clinical proteomic studies is also required, including the sample collection procedures. However, these primary works suggested that proteome analysis may be a helpful tool to evaluate therapeutic effects of drugs on a molecular level. These studies may serve as a basis for the future identification of toxins and biomarkers for monitoring and improving the PD. Although it is evident that significant efforts, including larger studies are required to reach these goals, those studies also provide a possible platform for future diagnostic and therapeutic applications in the field of peritoneal dialysis and allowed the identification of potential targets to be used in preventing inflammatory processes induced by the exposure to dialysis solutions. Some reviews on this field claimed that recent findings underscore proteomic tools in defining molecules removed by the treatment modalities. Most of the studies were conducted by using 2DE which is widely used but also lacking in sensitivity and reproducibility. Thus, we can envisage that in the future, using rapidly evolved proteomic tools such as LC-MS/MS and accurate quantitative proteomic approaches such as iTRAQ and label free analyses will bring more information and novel insight into this field.

5. References

- Bennett, M. R., et al. (2008), 'Using proteomics to identify preprocedural risk factors for contrast induced nephropathy', *Proteomics Clin Appl*, 2 (7-8), 1058-64.
- Boucher, B. J., et al. (1995), 'Glucose intolerance and impairment of insulin secretion in relation to vitamin D deficiency in east London Asians', *Diabetologia*, 38 (10), 1239-45.
- Brauner, A., et al. (2003), 'CAPD peritonitis induces the production of a novel peptide, daintain/allograft inflammatory factor-1', *Perit Dial Int*, 23 (1), 5-13.
- Breborowicz, A., Martis, L., and Oreopoulos, D. G. (1995), 'Changes in biocompatibility of dialysis fluid during its dwell in the peritoneal cavity', *Perit Dial Int*, 15 (2), 152-7.
- Brown, E. A., et al. (2003), 'Survival of functionally anuric patients on automated peritoneal dialysis: the European APD Outcome Study', *J Am Soc Nephrol*, 14 (11), 2948-57.
- Carozzi, S., et al. (1990), 'Bacterial peritonitis and beta-2 microglobulin (B2M) production by peritoneal macrophages (PM0) in CAPD patients', *Adv Perit Dial*, 6, 106-9.
- Cuccurullo, M., et al. (2010), 'Proteomic analysis of peritoneal fluid of patients treated by peritoneal dialysis: effect of glucose concentration', *Nephrol Dial Transplant*.
- Davies, S. J., et al. (2001), 'Peritoneal glucose exposure and changes in membrane solute transport with time on peritoneal dialysis', *J Am Soc Nephrol*, 12 (5), 1046-51.
- Fliser, D., et al. (2007), 'Advances in urinary proteome analysis and biomarker discovery', *J Am Soc Nephrol*, 18 (4), 1057-71.
- Heimbürger, O., et al. (1990), 'Peritoneal transport in CAPD patients with permanent loss of ultrafiltration capacity', *Kidney Int*, 38 (3), 495-506.
- Ho-dac-Pannekeet, M. M., et al. (1997), 'Analysis of ultrafiltration failure in peritoneal dialysis patients by means of standard peritoneal permeability analysis', *Perit Dial Int*, 17 (2), 144-50.
- Imholz, A. L., et al. (1993), 'Effect of dialysate osmolarity on the transport of low-molecular weight solutes and proteins during CAPD', *Kidney Int*, 43 (6), 1339-46.
- Kumar, S., et al. (1994), 'Improvement in glucose tolerance and beta-cell function in a patient with vitamin D deficiency during treatment with vitamin D', *Postgrad Med J*, 70 (824), 440-3.
- Lechner, M., et al. (2010), 'A proteomic view on the role of glucose in peritoneal dialysis', *J Proteome Res*, 9 (5), 2472-9.
- Lim, Y. K., et al. (2000), 'Haptoglobin reduces renal oxidative DNA and tissue damage during phenylhydrazine-induced hemolysis', *Kidney Int*, 58 (3), 1033-44.
- Lin, W. T., et al. (2008), 'Proteomic analysis of peritoneal dialysate fluid in patients with dialysis-related peritonitis', *Ren Fail*, 30 (8), 772-7.
- Linden, T., et al. (1998), '3-Deoxyglucosone, a promoter of advanced glycation end products in fluids for peritoneal dialysis', *Perit Dial Int*, 18 (3), 290-3.
- Liu, Y. W., et al. (2008), 'Proteomic analysis of pericardial effusion: Characteristics of tuberculosis-related proteins', *Proteomics Clin Appl*, 2 (4), 458-66.
- McLerran, D., et al. (2008), 'SELDI-TOF MS whole serum proteomic profiling with IMAC surface does not reliably detect prostate cancer', *Clin Chem*, 54 (1), 53-60.
- Minami, S., et al. (2007), 'Relationship between effluent levels of beta(2)-microglobulin and peritoneal injury markers in 7.5% icodextrin-based peritoneal dialysis solution', *Ther Apher Dial*, 11 (4), 296-300.

- Mischak, H., Julian, B. A., and Novak, J. (2007), 'High-resolution proteome/peptidome analysis of peptides and low-molecular-weight proteins in urine', *Proteomics Clin Appl*, 1 (8), 792-804.
- Nilsson-Thorell, C. B., et al. (1993), 'Heat sterilization of fluids for peritoneal dialysis gives rise to aldehydes', *Perit Dial Int*, 13 (3), 208-13.
- Norman, A. W., et al. (1980), 'Vitamin D deficiency inhibits pancreatic secretion of insulin', *Science*, 209 (4458), 823-5.
- Pecoits-Filho, R., et al. (2004), 'Chronic inflammation in peritoneal dialysis: the search for the holy grail?', *Perit Dial Int*, 24 (4), 327-39.
- Pischetsrieder, M. (2000), 'Chemistry of glucose and biochemical pathways of biological interest', *Perit Dial Int*, 20 Suppl 2, S26-30.
- Raaijmakers, R., et al. (2008), 'Proteomic profiling and identification in peritoneal fluid of children treated by peritoneal dialysis', *Nephrol Dial Transplant*, 23 (7), 2402-5.
- Reddingius, R. E., et al. (1995), 'Complement in serum and dialysate in children on continuous ambulatory peritoneal dialysis', *Perit Dial Int*, 15 (1), 49-53.
- Saku, K., et al. (1989), 'Lipoprotein and apolipoprotein losses during continuous ambulatory peritoneal dialysis', *Nephron*, 51 (2), 220-4.
- Sitter, T. and Sauter, M. (2005), 'Impact of glucose in peritoneal dialysis: saint or sinner?', *Perit Dial Int*, 25 (5), 415-25.
- Sritippayawan, S., et al. (2007), 'Proteomic analysis of peritoneal dialysate fluid in patients with different types of peritoneal membranes', *J Proteome Res*, 6 (11), 4356-62.
- Tan, L. B., et al. (2008), 'Proteomic analysis for human urinary proteins associated with arsenic intoxication', *Proteomics Clin Appl*, 2 (7-8), 1087-98.
- Tanaka, Y., et al. (1984), 'Effect of vitamin D3 on the pancreatic secretion of insulin and somatostatin', *Acta Endocrinol (Copenh)*, 105 (4), 528-33.
- Tyan, Y. C., et al. (2005a), 'Proteomic analysis of human pleural effusion', *Proteomics*, 5 (4), 1062-74. (2005b), 'Proteomic profiling of human pleural effusion using two-dimensional nano liquid chromatography tandem mass spectrometry', *J Proteome Res*, 4 (4), 1274-86.
- van der Kamp, H. J., et al. (1999), 'Influence of peritoneal loss of GHBP, IGF-I and IGFBP-3 on serum levels in children with ESRD', *Nephrol Dial Transplant*, 14 (1), 257-8.
- Wang, H. Y., et al. (2010), 'Differential proteomic characterization between normal peritoneal fluid and diabetic peritoneal dialysate', *Nephrol Dial Transplant*, 25 (6), 1955-63.
- Wieslander, A. P., et al. (1991), 'Toxicity of peritoneal dialysis fluids on cultured fibroblasts, L-929', *Kidney Int*, 40 (1), 77-9.
- Williams, J. D., et al. (2002), 'Morphologic changes in the peritoneal membrane of patients with renal disease', *J Am Soc Nephrol*, 13 (2), 470-9.
- Witowski, J. and Jorres, A. (2000), 'Glucose degradation products: relationship with cell damage', *Perit Dial Int*, 20 Suppl 2, S31-6.
- Witowski, J., et al. (2003), 'Mesothelial toxicity of peritoneal dialysis fluids is related primarily to glucose degradation products, not to glucose per se', *Perit Dial Int*, 23 (4), 381-90.
- Young, G. A., Kendall, S., and Brownjohn, A. M. (1993), 'Complement activation during CAPD', *Nephrol Dial Transplant*, 8 (12), 1372-5.



Progress in Peritoneal Dialysis

Edited by Dr. Ray Krediet

ISBN 978-953-307-390-3

Hard cover, 184 pages

Publisher InTech

Published online 17, October, 2011

Published in print edition October, 2011

Progress in Peritoneal Dialysis is based on judgement of a number of abstracts, submitted by interested people involved in various aspects of peritoneal dialysis. The book has a wide scope, ranging from in-vitro experiments, mathematical modelling, and clinical studies. The interested reader will find state of the art essays on various aspects of peritoneal dialysis relevant to expand their knowledge on this underused modality of renal replacement therapy.

How to reference

In order to correctly reference this scholarly work, feel free to copy and paste the following:

Hsien-Yi Wang, Hsin-Yi Wu and Shih-Bin Su (2011). Proteomics in Peritoneal Dialysis, Progress in Peritoneal Dialysis, Dr. Ray Krediet (Ed.), ISBN: 978-953-307-390-3, InTech, Available from:
<http://www.intechopen.com/books/progress-in-peritoneal-dialysis/proteomics-in-peritoneal-dialysis>

INTeCH
open science | open minds

InTech Europe

University Campus STeP Ri
Slavka Krautzeka 83/A
51000 Rijeka, Croatia
Phone: +385 (51) 770 447
Fax: +385 (51) 686 166
www.intechopen.com

InTech China

Unit 405, Office Block, Hotel Equatorial Shanghai
No.65, Yan An Road (West), Shanghai, 200040, China
中国上海市延安西路65号上海国际贵都大饭店办公楼405单元
Phone: +86-21-62489820
Fax: +86-21-62489821

© 2011 The Author(s). Licensee IntechOpen. This is an open access article distributed under the terms of the [Creative Commons Attribution 3.0 License](https://creativecommons.org/licenses/by/3.0/), which permits unrestricted use, distribution, and reproduction in any medium, provided the original work is properly cited.

IntechOpen

IntechOpen