

We are IntechOpen, the world's leading publisher of Open Access books Built by scientists, for scientists

6,900

Open access books available

186,000

International authors and editors

200M

Downloads

Our authors are among the

154

Countries delivered to

TOP 1%

most cited scientists

12.2%

Contributors from top 500 universities



WEB OF SCIENCE™

Selection of our books indexed in the Book Citation Index
in Web of Science™ Core Collection (BKCI)

Interested in publishing with us?
Contact book.department@intechopen.com

Numbers displayed above are based on latest data collected.
For more information visit www.intechopen.com



Replication Timing: Evolution, Nuclear Organization and Relevance for Human Disease

Megan Lynne Wright and Frank Grützner

*The Robinson Institute, School of Molecular & Biomedical Sciences,
University of Adelaide, Adelaide
Australia*

1. Introduction

DNA replication in eukaryotes is multifaceted, dynamic and highly organised. In contrast to bacterial cells, which replicate from single origins of replication, complex eukaryote genomes replicate from thousands of origins of replication. Although we know that the timing of replication depends on the chromatin environment, the function and evolution of mechanisms controlling replication timing are unclear. Many studies in species ranging from yeast to humans have demonstrated how replication timing depends on proximity to certain sequences such as telomeres and centromeres (Ferguson and Fangman, 1992; Friedman et al., 1996; Heun et al., 2001), chromatin status (euchromatin and heterochromatin) and is linked to gene function and expression (housekeeping genes versus tissue specific genes and monoallelically expressed genes) (Hiratani and Gilbert, 2009; Hiratani et al., 2009). Replication timing has been linked to fundamental epigenetic regulatory mechanisms including genomic imprinting (Kitsberg et al., 1993; Knoll et al., 1994), X chromosome inactivation (Gilbert, 2002; Takagi et al., 1982; Wutz and Jaenisch, 2000), interchromosomal interactions (Ryba et al. 2010) and is increasingly recognised to be important in human disease (DePamphilis, 2006).

This chapter integrates established knowledge with recent scientific breakthroughs, using genome-wide approaches linking different aspects of epigenetic control with replication timing, to provide a state-of-the-art overview and perspective for future work in this area of research. Despite detailed knowledge on replication timing in a select number of model organisms (e.g. yeast, drosophila, mouse) we are only beginning to understand how replication timing evolved in relation to other epigenetic mechanisms (e.g. genomic imprinting, X inactivation, and long-range chromatin interaction). The evolution of these epigenetic mechanisms will be presented together with novel ideas about how cytological and genome-wide approaches and methodologies can be combined to provide a comprehensive picture of spatial and temporal organization, the evolution of replication timing in eukaryotic genomes, and their relevance in human disease.

2. Background

2.1 Replication initiation

The complete and accurate replication of DNA during the S-phase is of fundamental importance for all organisms. The mechanism of replication is highly conserved across

evolution, whereby a cell must gather the proteins to initiate replication at specific origins of replication (OR)s, unwind the DNA, move the replication fork bi-directionally away from the OR in such a manner as to allow the replication of the new daughter strand of DNA using the old parental DNA strand, and then cease replication. However whilst the replication process is highly conserved, different eukaryotes use different proteins and forms of control over replication (Gilbert, 2010).

Whilst general similarities exist in the type of machinery required to copy and create a new DNA strand across organisms, some areas of genome replication remain elusive. One such area in eukaryotes is replication initiation and timeline. Linear eukaryotic chromosomes replicate from many ORs which are spread out along their structure and are recognized by the origin recognition complex (ORC) (reviewed in Masai et al., 2010). These OR sites are where replication forks form and move bi-directionally away from the OR, replicating the DNA sequence as they move, then terminating when they meet another fork approaching from the opposite direction. The ORCs recognize almost all ORs, and will assemble at these regions in a highly conserved manner across eukaryotes. However, whilst ORCs bind specific sequence motifs in some eukaryotes, such as in budding yeast (Bell and Stillman, 1992), in other eukaryotes specificity is not well defined through sequence. Fission yeast and *Drosophila* have ORCs that recognize AT-rich sequences (Austin et al., 1999; Chuang and Kelly, 1999), rather than specific motifs. Moreover, human ORCs, which are chosen as initiators of replication, have also been shown to require AT-rich sequences as well as various other features, including matrix attachment region sequences, dinucleotide repeats and asymmetrical purine-pyrimidine sequences (Altman and Fanning, 2004; Debatisse et al., 2004; Paixao et al., 2004; Schaarschmidt et al., 2004; Wang et al., 2004). Other factors that may affect the initiation of replication at certain ORs also include DNA topology, transcription factors, and elements of the pre-replicative complex (pre-RC) (reviewed in Masai et al., 2010).

During late mitosis and G1, the chromatin-bound ORCs are loaded with minichromosome maintenance (MCM) complex, and thus become pre-RCs, with the ability to gather the required components to start replication. The pre-RCs assemble at most of the OR regions, however only a few of these complexes start replication in their region. The cell's choice to start replication at some ORs as opposed to others is unclear; whilst it is thought that the assembly of the pre-RCs at most ORs is used as backup in case the cell runs into trouble during replication, the choice as to whether a Pre-RC becomes an active replication initiator is not well understood (Doksani et al., 2009; Ibarra et al., 2008; Koren et al., 2010; Woodward et al., 2006).

There are, however, some known factors that may contribute to a pre-RC site becoming an active OR (reviewed in Masai et al., 2010). Firstly, the selection of replication initiation sites may be controlled by both the existence of a pre-RC and its assembly in combination with events that actually cause initiation. For example, the firing of an OR appears to affect the firing of adjacent ORs, as shown in the example of budding yeast, where active ORs suppress the initiation of replication at adjacent ORs (Brewer and Fangman, 1993). In this example, the suppression of adjacent potential ORs may be caused by the disruption of pre-RC complexes at these sites by the replication process initiated at the active OR (reviewed in Masai et al., 2010). Also, read-through transcription may affect the firing of downstream ORs (Haase et al., 1994; Saha et al., 2004). Furthermore chromatin structure, which refers to the chemical characteristics of the chromatin strand, may influence the initiation of replication by affecting the pre-RC assembly. There is evidence to show that histone

acetylases and deacetylases play roles in the assembly of pre-RCs by interacting with, or disturbing the loading of, pre-RC elements such as the MCM complex (Burke et al., 2001; Iizuka et al., 2006; Pappas et al., 2004; Pasero et al., 2002).

Finally, distal elements, such as locus control regions (LCRs) are known to affect initiation (Hayashida et al., 2006; Kalejta et al., 1998), with the initiation of replication at regions such as the human β -globin locus being controlled by a 5' LCR (Aladjem et al., 1995).

2.2 Temporal programmes of ORs in eukaryotic chromosomes

Replication of eukaryotic genomes follows a defined temporal program, whereby the firing of ORs occurs in a predetermined but tissue specific manner. Hence this process is dynamic in terms of the selection of OR activation, as the cellular environment also plays a role in the temporal regulation of replication across the genome. Experiments have shown that a reduction in cellular thymidine caused a reduction in replication fork speed. This caused more intermediate ORs to be activated in order to compensate for the reduction in replication speed (Anglana et al., 2003; Taylor, 1977), and showed that cellular environments indeed affect the dynamics of OR firing. This shows that a cell is able to change its pre-determined temporal replication program if it undergoes replication stress, with the most relevant aspect of OR activation being the genomic context and how it impacts the replication program.

Factors that are involved in OR firing include chromatin loops, dormant and active pre-RC complexes and fork replication rate, and finally nuclear organisation. Firstly, there is some evidence to suggest that chromatin loops affect replication firing. Studies in *Xenopus* egg extracts transferred with erythrocyte nuclei showed that cells that entered into M-phase instantly after somatic transfer took longer to replicate than cells which were held in mitosis and allowed to undergo a single mitosis event. This was due to the influence of the single round of mitosis on the chromatin structure; the round of mitosis supported the formation of smaller chromatin loops which correlated with higher ORC protein recruitment and more efficient genome replication (Lemaitre et al., 2005). Another study showed that the ORs closer to regions of chromatin loop anchorage in G1 initiated replication in the following S-phase earlier than ORs located further away from anchorage regions, indicating that loop-formation was part of the control mechanism for OR firing (Coubet et al., 2008).

Fork replication rate also appears to have a role in the temporal organization of OR firing. Genomic integrity may be aided by the presence of dormant origins of replication, as MCMs are often present in much greater amounts than those needed at pre-RCs, and the reduced presence or loss of pre-RCs result in genomic instability, S-phase arrest, and cell death (Edwards et al., 2002; Hyrien et al., 2003; Lengronne and Schwob, 2002; Shreeram et al., 2002; Tanaka and Diffley, 2002). Dormant ORs have been shown to activate when forks are stalled, with one model hypothesizing that OR activation occurs stochastically, whereby the presence of a stalled fork increases the chances of adjacent dormant ORs being activated (Blow and Ge, 2009; Ibarra et al., 2008). Other models propose that the presence of a stalled fork changes the topology of the DNA strand and the chromatin structure within the region, thus causing nearby and usually dormant ORs to activate (Ibarra et al., 2008).

Finally, nuclear organisation has a role to play in a cell's replication program. Distinct chromosome territories exist as separate nuclear architecture compartments in interphase cells. Within these territories, a higher order of chromatin structure exists, where domains containing specific chromosomal arms and bands have been found to be located in the

nucleus in similar regions of certain cell types (Dietzel et al., 1998). It has also been proposed that these chromatin-rich chromosome territories (CTs) are separated by chromatin-poor areas called 'interchromatin compartments', which contain transcriptional and splicing machinery, as well as DNA replication and damage-repair machinery (reviewed in Aten and Kanaar, 2006; Cremer and Cremer, 2001; Misteli, 2001). However recent work showed extensive intermingling of CTs contradicting the existence of the interchromatin compartment (reviewed in Aten and Kanaar, 2006; Branco and Pombo, 2006; reviewed in Cremer and Cremer, 2010). Within separate chromosome territories there are many replication foci, whereby early and late replicating DNA can be found in spatially separate and distinct regions (Zink et al., 1999). Overall late replicating DNA (including the late replicating inactive X chromosome) is often located at the nuclear periphery or around the nucleolus organizing region (Sadoni et al., 1999).

3. Asynchronous replication

Asynchronous replication is another variation in the eukaryotic temporal replication repertoire. Asynchronous replication occurs when the ORs present in the same regions on two homologous chromosomes, initiate replication at different times. This results in one of the alleles replicating earlier than the allele on the other homologue. Notably, the alleles of asynchronously replicating genes are also observed to locate to separate discrete foci in a nucleus. This form of replication is a feature of monoallelically expressed genes, including genes that undergo allelic exclusion, imprinted genes, and genes from the X-chromosome in female somatic cells.

3.1 Approaches to measuring asynchronous replication and its effects on genome biology and disease

3.1.1 Chromosome banding

Chromosome banding techniques gave the first insights into the epigenetics behind replication, and more specifically, asynchronous replication. It is now well established that replication timing is not uniform across eukaryotic genomes, with select chromosomal regions showing early or late replication in the S-phase. This phenomenon has been observed in distinct banding regions along condensed metaphase chromosomes.

The discovery of early and late replication banding on metaphase chromosomes using the Bromodeoxyuridine (BrdU) incorporation technique, can be attributed to Latt (1973). Latt discovered that the differential incorporation of BrdU, a thymidine replacement, during the S-phase between early and late replicating regions of DNA, could be measured using 33258 Hoechst fluorescence. An efficiency reduction of the Hoechst dye fluorescence occurs when it is bound to the incorporated poly(dA-BrdU) compared to the poly(dA-dT). Incorporation of BrdU into either the late or early replicating DNA can be adjusted by culturing cells in BrdU for different time periods; specifically early replication stage BrdU incorporation was achieved by first culturing in BrdU with the addition of a terminal pulse of [3H]-dT, whilst late replication BrdU incorporation was achieved by culturing in medium containing thymidine to which BrdU was only added 6 hours before harvest. This allowed identification of 5-10 megabasepair regions on chromosomes replicating either early or late in the S-phase.

Latt's early research defined a fundamental relationship between chromosome organisation and replication timing; eukaryotic chromosomes do not undergo equivalent amounts of

replication both within a chromosome and across a karyotype, whereby a distinct non-equivalence of replication is represented by the presence of discrete bands for early and late replicating regions on a chromosome. Furthermore, the late-replicating inactive X chromosome in human females, which is noted to have a slightly more condensed karyotype, showed distinctly opposing fluorescence to the less-condensed active-X chromosome.

Higher-resolution replication banding has since been established in humans and numerous vertebrate species (Biederman and Lin, 1979; Costantini and Bernardi, 2008; Drets et al., 1978). Currently, there are three tiers of replication resolution: 1) low-resolution banding (e.g. De Latt's BrdU bands, and Giemsa and Quinacrine bands); 2) higher resolution banding (GC content in grouped isochore regions); and 3) individual isochores (Costantini and Bernardi, 2008). Isochores are regions of DNA, above 300 kb (on average around 0.9 Mb in size in the human genome), that have a similar GC content, and also have similar gene content (Costantini and Bernardi, 2008; Costantini et al., 2006; Costantini et al., 2007). Specifically, there are five groups of isochores, whereby lower GC content is classed with the isochore groups L1 and L2 (less than 40% GC-content, and few genes), intermediate groups are H1 and H2 (with around 47% and 52% GC-content, and intermediate amounts of genes), and finally the highest group is H3 (with above 52% GC-content, and high amounts of genes) (Bernardi, 1995). A replicon is a genomic region around 50-400 kb in size, that replicates from a single origin of replication. It has been shown that replicons that exist within a certain isochore region, all undergo similar replication timing, with clusters of early replicating replicons being found next to each other, and clusters of late-replicating replicons being grouped as well (Watanabe et al., 2002). Through the comparisons of the three tiers of resolution, it was found that groups of early and late replicating isochores corresponded to, and approached the same size of, high-resolution replication banding regions (4-7 Mb).

The results of the highest-replication isochore banding when compared to the other banding techniques has indicated that in mammalian chromosomes there are three nested structures important to replication (Figure 1). The first structure is that of the replicon (50-450 kb), whereby individual replicons undergo dynamic firing of their ORs. These replicons however usually exist in clusters of 10 or more, and every replicon in the cluster will usually undergo replication at the same time during the S-phase. The second is that of the isochore (> 300 kb) which is a region that exists as a combination of replicons all with similar early or late replication status and GC content, which can undergo early or late replication in the cell cycle. The third structure is that of the cytogenetic bands, which indicates large regions on a chromosome undergoing early or late replication, and corresponds well to groups of all-early or all-late replicating isochores (Costantini and Bernardi, 2008). This shows that the arrangement of mitotic chromosome structure is closely related to replication timing, from the chromosome banding level, all the way through to the level of organisation of the individual replicons. This pattern is maintained in interphase, where chromosome territories in the S-phase have clusters of early and late replicating foci, which correspond to the R- and G/C bands observed in mitotic chromosomes respectively (Sadoni et al., 1999).

Replication banding techniques have allowed early and late timing replication zones to be delineated along metaphase chromosomes, where areas of similarly replicating replicons are grouped making larger replicon clusters (Watanabe et al., 2002). However, the large genomic regions that bridge the transition of an early-replicating replicon cluster to a late-replicating replicon cluster appear to lack any ORs, and rely on the continuous movement of

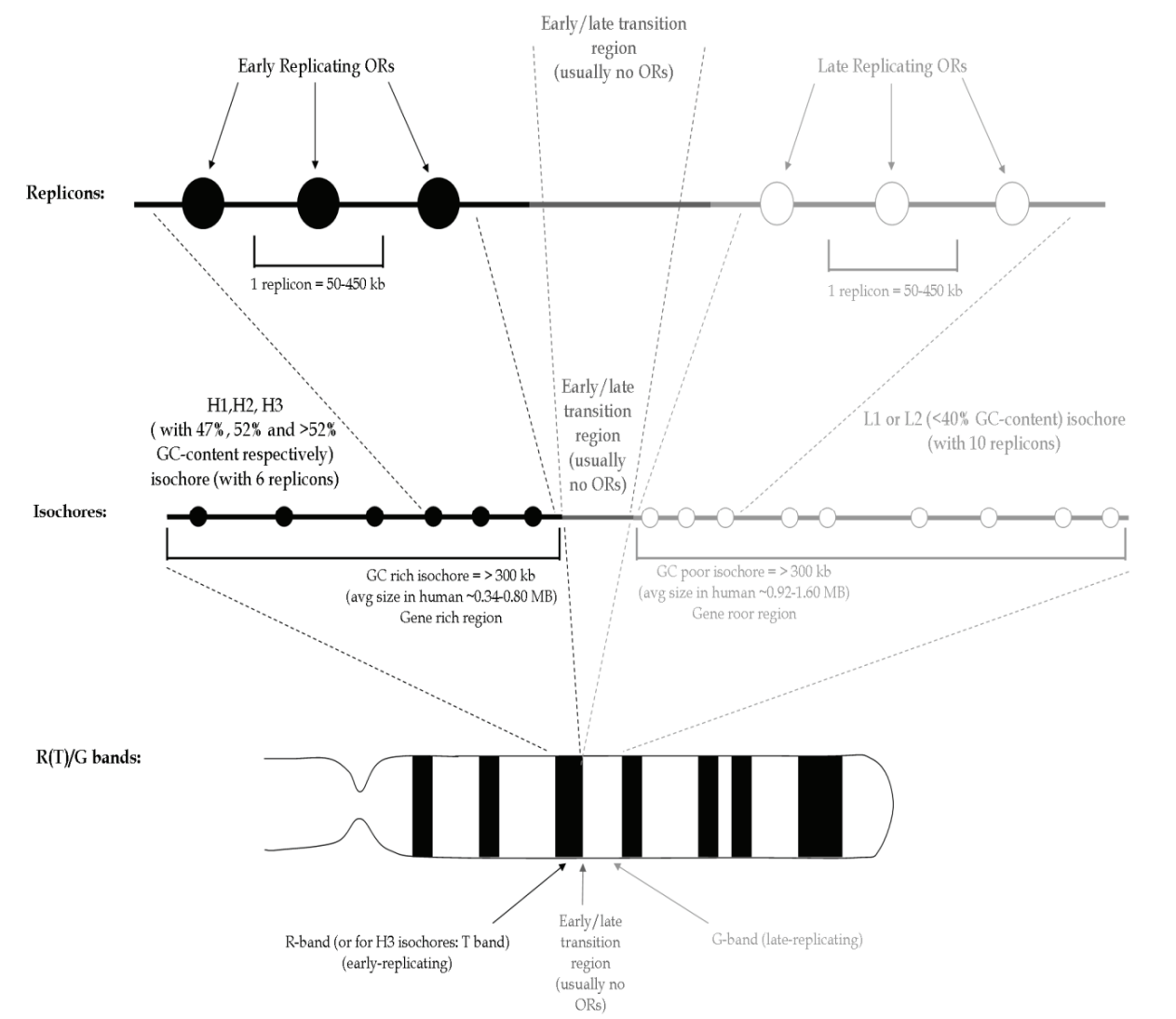


Fig. 1. The three nested structures of replication (see text for explanation).

forks from adjacent replicon-clusters/isochore regions for replication to occur in their region (reviewed in Farkash-Amar et al., 2008; Hiratani et al., 2008; Watanabe and Maekawa, 2010). This means that the fork from the earlier firing OR will have to move across the replication transition region, until it meets another fork from the late-replicating region. This will often pause replication in these early to late transition zones, which can cause genomic instability in the form of DNA breaks and rearrangements (Raghuraman et al., 2001; Rothstein et al., 2000). Furthermore, common genomic fragile sites frequently reside in early to late replication transition regions, and also lack backup ORs (Debatisse et al., 2006; Ge et al., 2007; Ibarra et al., 2008).

In addition to the increased genomic instability there is also an increase in the number of non-B-form DNA structures in replication transition regions (reviewed in Watanabe and Maekawa, 2010). Replication switch points (from early to late) are often associated with purine/pyrimidine rich areas, as these DNA regions can form structures called triplexes (H-DNA) that are known stop replication forks (Baran et al., 1991; Brinton et al., 1991; Ohno et al., 2000). The non-B-form structures however also have mutagenic properties, causing somatic recombination events (Kalish and Glazer, 2005; Knauert et al., 2006). It has thus been

proposed that these replication transition regions, which correspond to the regions between R/G bands, are subject to more genomic instability due to the increased presence of non-B-DNA structures in these genomic areas (Watanabe and Maekawa, 2010).

Replication timing is affected in regions of the human genome involved in disease. Generally it has been proposed that regions of the human genome that reside in areas where replication timing switches (early to late) would be unstable and more prone to DNA damage (reviewed in Watanabe and Maekawa, 2010). Notably, these regions of replication timing transition are also associated with many human diseases, including cancer (Watanabe et al., 2009; Watanabe et al., 2002; Watanabe et al., 2004). Regions or genes associated with other diseases, such as familial Alzheimer's, familial amyotrophic lateral sclerosis and phenylketonuria, are also found in these replication timing transition regions. Furthermore, there are over 70 human diseases associated with non-B DNA structures, including neurological and psychiatric diseases, and many genomic disorders, indicating that the increase of these structures in replication timing transition regions may be a first step in the mutational process associated with these diseases (reviewed in Watanabe and Maekawa, 2010).

3.1.2 Measuring asynchronous replication with the dot assay technique

Molecular cytogenetic techniques like Fluorescence *in situ* Hybridization (FISH) and an explosion of available genomic clones and whole chromosome probes has let to huge refinement of physical maps on metaphase and interphase chromosomes. This also enabled replication timing to be investigated on the single gene level. In these experiments, DNA probes designed to hybridise to a specific gene allowed the replication status to be observed in three states in a nucleus; two signals (single-single (SS) dot) represents an unreplicated status, whilst a three signal status (single-double (SD) dot) represents a locus undergoing

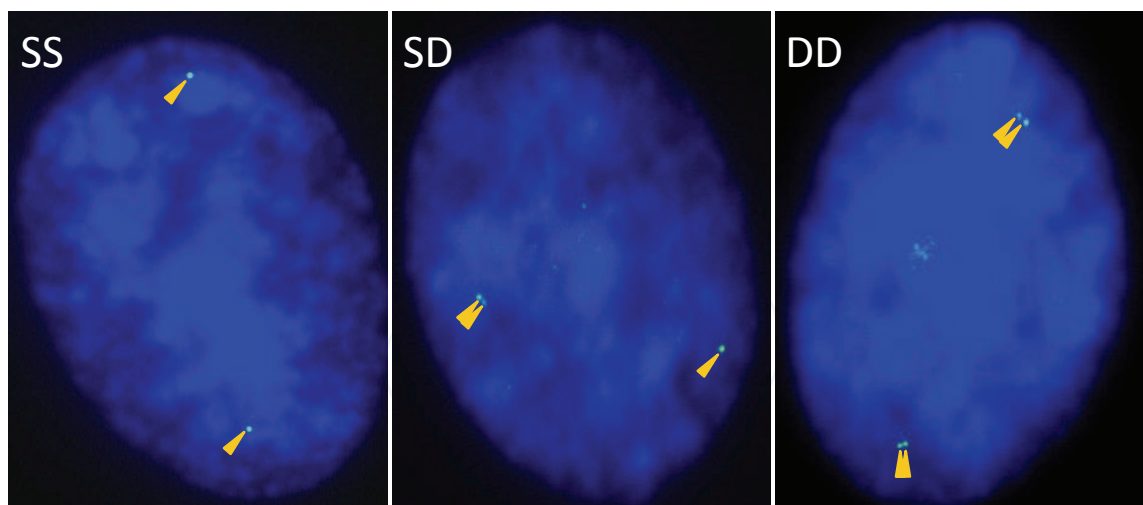


Fig. 2. Cytogenetic FISH dot assay

Mammalian interphase nuclei stained with DAPI (blue). Yellow arrows point to allele copies (green FISH signals) observed in each nucleus. The SS panel has two clearly defined green signals representing the two allele copies present in the nucleus, meaning the locus has not replicated. The SD panel shows three green signals, indicating that one allele has undergone replication, whilst the other allele is lagging behind and not yet replicated. The DD panel shows 4 green signals, indicating that both the alleles have replicated, and the locus has finished replicating.

replication, where one allele has replicated and the other is lagging, and finally a four signal status (double-double (DD) dot) represents a locus that is fully replicated (Selig et al., 1992). Asynchrony in this case is measured by the frequency of three-signal (SD dot) status observed in a cell line. However, the classification of asynchronous replication varies in the literature, with an asynchronously replicating state being assigned for loci with anywhere between 30-50% SD signal, and a non-asynchronously replicating locus generally having below 30% SD signal (Baumer et al., 2004; Wilson et al., 2007).

4. Replication timing in heteromorphic sex chromosomes

Replication banding and FISH dot assay techniques have not only shed light on how chromosome structure can affect replication, they have also allowed new insights into how replication timing of single genes has evolved. Changes in replication banding specific to one homolog in a karyotype have been used to identify early stage cytologically “homomorphic” sex chromosomes in various vertebrates (Nishida-Umehara et al., 1999; Schempp and Schmid, 1981). Heteromorphic sex chromosomes evolved from a pair of autosomes by a combination of suppression of recombination and accumulation of sexual antagonist genes (Ohno, 1967). The isolation of one of the sex chromosomes in one sex (Y chromosomes in mammals and some fish, the W chromosome in birds and many non-mammal vertebrates) has led to degeneration and massive gene loss. The evolution of heteromorphic sex chromosomes has been indicated to lead to a gene dosage difference between the sexes. In mammals this has resulted in the inactivation of one of the X chromosomes in female somatic cells.

X chromosome inactivation is a unique example where the status of chromatin can be changed from active to inactive (facultative heterochromatin) on a chromosome-wide level. In therian female mammals (marsupials and placental mammals), one of the X chromosomes in somatic cells is heterochromatic and late replicating (Holmquist, 1987; Lyon, 1961; Ohno et al., 1963; Schweizer et al., 1987; Takagi, 1974). This transcriptionally silenced and condensed X-chromosome is visible as a Barr body in somatic cells. In the third major group of mammals, the egg laying monotremes (platypuses and echidnas), it is less clear if X inactivation and late replication occurs. Earlier replication banding did not reveal obvious asynchronously replicating X chromosomes (Wrigley and Graves, 1988). More recently molecular cytological data suggests the platypus X-chromosomes display partial and gene specific forms of inactivation, but still undergo some level of asynchronous replication of X-specific genes (Deakin et al., 2008a; Ho et al., 2009). Furthermore, a wholesale shift in replication timing for the avian Z-chromosome, which shares extensive homology with the extraordinary ten sex chromosome system in monotremes, is not observed in male homogametic birds, indicating that this process is only present in therian mammals (Arnold et al., 2008; Grutzner et al., 2004; Rens et al., 2007; Veyrunes et al., 2008).

4.1 Chromatin marks behind X-inactivation

The X-inactivation process results in monoallelic expression of the vast majority of X-linked genes in humans and mice. Its process is dependent on critical elements which reside in the X-inactivation centre (XIC) on each X-chromosome, particularly the imprinted *Xist* and *Tsix* genes, and long-range chromatin elements (Boumil and Lee, 2001; Brockdorff et al., 1991; Brown et al., 1991; Clerc and Avner, 2003). The *Tsix* gene appears to regulate chromatin

structure at the *Xist* locus, causing its expression to be upregulated. This upregulation of *Xist* RNA corresponds to chromatin changes in the inactive X, most of which are associated with silencing (Heard, 2005). These *Xist*-induced marks on the inactive X include methylation of CpG dinucleotides in gene promoters, and histone modifications such as hypomethylation of H3K4 and hypoacetylation of H3K9 and H4, also monomethylation of H4K20 and trimethylation of H3K27, and finally H2AK119 ubiquitination (reviewed in Zakharova et al., 2009). Furthermore, the chromatin from the inactivated-X chromosome is enriched for the histone variant macroH2A1, and the final epigenetic mark is the late replication status of the inactive-X during the S-phase (reviewed in Zakharova et al., 2009). This inactivated state facilitates a change in the expression potential of the inactive X, and thus provides gene dosage compensation in female therian mammals (Hellman and Chess, 2007). It has also been observed that the active human X-chromosome is hypomethylated at gene-rich areas compared to the inactive X-chromosome, which displays hypermethylation (Hellman and Chess, 2007).

In placental mammals X inactivation of the maternal or paternal X chromosome is random, in marsupials and mouse extra-embryonic tissues only the paternal X is inactivated (reviewed in Lee, 2003). The epigenetic marks associated with marsupial X-inactivation include the loss or reduction of active histone marks on the inactive-X including H3K4 dimethylation, H4 acetylation, H3K9 acetylation marks (Koina et al., 2009; Wakefield et al., 1997). However, the absence of inactivating histone marks in marsupials, as observed on the inactive-X in placental mammals, may be due to the absence of a XIC region in marsupials (Duret et al., 2006; Hore et al., 2007; Koina et al., 2009). The evolution of the *Xist* non-coding RNA gene involves the pseudogenization of a protein-coding gene in the placental mammalian genome. As such, this gene is not present in marsupial and monotreme mammals, and cannot be found in the regions orthologous to the XIC in these mammalian clades. In marsupials and monotremes, the orthologous flanking genes to the placental mammal XIC region map to different ends of the X-chromosome and chromosome 6 respectively (Davidow et al., 2007; Deakin et al., 2008b; Duret et al., 2006; Hore et al., 2007; Shevchenko et al., 2007).

The FISH based dot assay was utilized to measure replication timing of genes from X-specific regions within the five platypus X-chromosomes. This did not reveal a clear cut replication asynchrony on X specific regions but one of the homologous pairs, namely the X3 chromosomes, showed significantly differential condensation, indicative of wholesale chromatin silencing (Ho et al., 2009). The other four sex chromosome pairs in platypus females, however, show no significant difference in condensation between homologs indicating that the X-inactivation process in monotremes may be region specific (Ho et al., 2009). In male homogametic birds (with ZZ sex chromosomes), studies have shown that whilst the entire chicken Z-chromosome replicates synchronously, the inactivation process appears to be partial and gene-specific, with dosage-compensation occurring stochastically, and in a stage and tissue-specific manner (Arnold et al., 2008; Deakin et al., 2008a; Ho et al., 2009; Kuroda et al., 2001; Kuroiwa et al., 2002; Mank and Ellegren, 2009). Moreover, there is evidence that dosage compensation in monotreme mammals operates in a similar manner as in birds, with platypus females showing stochastic transcriptional inhibition of genes from X-chromosomes (Deakin et al., 2008a). In this case, some X-genes were shown not to be dosage compensated, whilst monoallelic expression was observed at other X-chromosome loci (Deakin et al., 2008a).

5. Asynchronous replication in genes subject to genomic imprinting and allelic exclusion

Genomic imprinting refers to the parent of origin dependent monoallelic expression of an autosomal gene, engendered by the inheritance of parental-specific methylation at an allele. To date, imprinting mechanisms have only been found in therian mammals, which rely on extensive intrauterine foetal-maternal exchange during early development. The 'parental conflict hypothesis' proposed that imprinting is a way of parental genomes counteracting the effects of each other during foetal development, particularly in foetal-maternal placental nutrient exchange (Moore and Haig, 1991). Monotremes, unlike therian mammals, have a brief intrauterine foetal-maternal exchange and there is no competition of the parental genomes over maternal resources. In line with the 'parental conflict hypothesis' to date no imprinting has been discovered in this basal mammalian lineage, suggesting that imprinting evolved after their divergence from therian mammals (Renfree et al., 2009).

5.1 Imprinted genes

Imprinted genes are asynchronously replicated (Table 1), where the replication of one allele lags behind the other in the S-phase, even though the two alleles should be controlled by similarly situated ORs. Traditionally, imprinting involves DNA methylation at only one allele of a gene (i.e. the copy from just one parent is methylated) (Delcuve et al., 2009). In most cases the imprinted allele is methylated and transcriptionally silent. The active or silenced transcriptional state of an allele appears to go hand in hand with replication timing, whereby the expressed allele is early replicated, whilst the silenced allele undergoes late replication in the S-phase (reviewed in Zakharova et al., 2009).

Imprinting control regions (ICRs) are the elements which control the imprinting status of an allele (Bartolomei, 2009). The parentally inherited methylation status, which is established during gametogenesis, of an ICR dictates its control over an allele, meaning that maternal and paternal ICRs at a locus will interact differently with transcriptional control elements, due to their dissimilar methylation status (Bartolomei, 2009). Notably, maternally-imprinted ICRs are often found in the promoters for antisense transcripts, whilst paternally-imprinted ICRs usually reside in intergenic regions (reviewed in Edwards and Ferguson-Smith, 2007). Moreover, the formation of large imprinted gene clusters, where regions of maternally and paternally expressed genes are interspersed with non-imprinted genes, allows many imprinted genes to share regulatory elements, such as ICRs (reviewed in Bartolomei, 2009).

The asynchronously replicating status of imprinted loci has been linked to DNA methylation and other epigenetic marks associated with imprinted gene silencing (Dünzinger et al., 2005). However in birds, which have no fetal-maternal exchange and display no form of genomic imprinting, there are several conserved regions of mammalian imprinted gene orthologs that are asynchronously replicated (Dünzinger et al., 2005). These asynchronously replicating regions are found on chicken macrochromosomes which, compared to their microchromosome counterparts, are hypoacetylated, hypomethylated, late replicating, and display a lower recombination rate during meiosis (Consortium, 2004; Grutzner et al., 2001; McQueen et al., 1998; Schmid et al., 1989). This indicates that asynchronous replication predates imprinting, and that the common vertebrate ancestor of mammals and birds had genomic regions with a 'pre-imprinted' status, whereby asynchronous replication still occurred (Dünzinger et al., 2005). It will be interesting to see whether monotreme orthologs of imprinted genes also replicate asynchronously, as observed in birds (Dünzinger et al., 2005).

5.2 Allelic exclusion genes

Allelic exclusion is a process whereby the future expression from one allele of a locus is chosen in a cell, resulting in monoallelic expression at the locus. Allelic exclusion is a feature of many multigene families, with olfactory gene clusters and immunoglobulin gene clusters being two classic groups of genes utilizing this form of epigenetic control. However there are also other groups of genes which utilize allelic exclusion, including interleukins and the p120 catenin (Gimelbrant et al., 2005; Hollander et al., 1998). Many epigenetic elements control the cell's choice over which allele will be active, including cis and trans-acting DNA sequences, long-range interactions, and chromatin modification (reviewed in Zakharova et al., 2009).

5.2.1 Olfactory genes

Whilst some olfactory receptor (ORc) genes are dispersed in the mammalian genome, many exist in clusters (Kambere and Lane, 2007). The largest cluster in mouse consists of 244 ORc genes, whilst in human the largest cluster contains 116 genes (Godfrey et al., 2004; Malnic et al., 2004). Both species have individual ORc genes and ORc clusters spread across many different chromosomes, with a few chromosomes containing large clusters of ORcs (Glusman et al., 2001; Kambere and Lane, 2007). However, even though the eutherian genome contains around 1000 ORc genes, only a single ORc gene will be expressed in a single olfactory neuron, meaning that that neuron will only express one type of odorant receptor (Malnic et al., 1999). Furthermore in a process known as allelic inactivation, the locus that is being expressed undergoes differential epigenetic processes at each allele that cause one allele to be inactivated, and thus monoallelic expression of the gene (Chess et al., 1994).

Chromosome conformation capture (3C) assays have given an insight into the mechanisms surrounding the selection of a single ORc gene (Lomvardas et al., 2006; Serizawa et al., 2003). The recently developed 3C technique has become invaluable to studies on nuclear architecture, as it is able to detect and quantify long-range DNA interactions *in vivo*, at high resolution, between sequences in close nuclear proximity. The technique relies on the cross-linking of proteins using formaldehyde in intact nuclei or cells (Dekker et al., 2002). The result is that proteins are cross-linked to other proteins and to adjacent chromatin (Orlando et al., 1997). DNA regions that are actually touching at the time of fixation will be held together via the cross-linking of their DNA bound proteins. The cross-linked genomic DNA is then digested with DNA restriction enzymes and the resulting DNA segments are then ligated. Finally, PCR across these ligation sites detects long-range interacting regions at the DNA sequence level (Dekker et al., 2002).

The 3C experiments on olfactory neurons indicated that ORcs undergo an interaction with a long-range interacting region called the "H element", located within the mouse ORc gene cluster *MOR28*, and perhaps do so in a competitive manner in order to become the activated ORc gene (Fuss et al., 2007; Lomvardas et al., 2006; Serizawa et al., 2003) so that only one gene will be chosen and actively expressed (Lomvardas et al., 2006; Serizawa et al., 2003). However another study showed that deletion of the H element only affected proximal genes within its *MOR28* cluster, with no effect on genes outside this cluster, indicating that it cannot be the only factor involved in terms of activating ORc genes in long-range *cis* and *trans* conformations (Fuss et al., 2007).

ORC genes are observed to undergo asynchronous replication (Table 1), with different clusters and individual ORC genes on the same chromosome undergoing replication at the same time in the S-phase, and the establishment of this form of replication occurring in early embryogenesis (Chess et al., 1994; Mostoslavsky et al., 2001; Singh et al., 2003). The asynchronous replication of ORC loci is believed to be controlled in part by the Polycomb group methyltransferase *Eed*, as ORC genes lose their asynchronously replicating status in its absence (Alexander et al., 2007). This could explain how ORC genes located on the same chromosome are observed to undergo asynchronous replication, with *Eed* being a requirement for asynchronous replication, regardless of position on a chromosome (Alexander et al., 2007; Singh et al., 2003).

5.2.2 Immunoglobulin gene loci

It has been suggested that asynchronous replication plays an important role in the selection of which parental allele will undergo V(D)J rearrangement. The allelic exclusion process in mouse occurs for the genes which do not undergo intrachromosomal recombination, and thus are silenced. The rearrangement process of the immunoglobulin genes in mouse requires crosstalk between two loci from two different chromosomes, namely the IgH locus (containing V, D and J gene segments), and Igk locus (containing V and J segments). The *de novo* methylation of all the VDJ alleles occurs at the implantation stage, and this is also when asynchronous replication is established (Table 1) (Mostoslavsky et al., 2001). However, the selection of one allele at each locus to undergo early replication puts this allele down a demethylation and chromatin opening pathway, allowing it to be rearranged and to become a functional gene (Goldmit et al., 2002). The other late replicating allele however, remains methylated and cannot be rearranged, and is therefore functionally silenced (Goldmit et al., 2002). The two alleles also have different histone marks with the inactive allele binding the heterochromatin specific protein HP1, and the active allele displaying active histone marks such as di- or trimethylated H3K4, and H3 and H4 acetylation (reviewed in Zakharova et al., 2009).

Asynchronous replication and monoallelic expression are hallmarks of genes which undergo imprinting, X-inactivation, and allelic exclusion. Whilst each might come with its own epigenetic makeup, there are also similarities in the types of epigenetic marks observed to differentiate the active allele (with active histone marks) from the inactive allele (with silencing histone marks). Furthermore, the very fact that asynchronous replication occurs together with different forms of epigenetic monoallelic expression suggests that asynchronous replication may have evolved as a mechanism to control the expression of underlying genes, helping to establish the correct epigenetic marks for monoallelic expression.

6. The CTCF protein and the interactome

The CCCTC-binding factor (CTCF) is a renowned genome organiser, and has roles in regulating long-range chromatin interactions (both intrachromosomal and interchromosomal), but also has roles in other processes such as transcriptional insulation, activation/repression, imprinting control, and X-inactivation (Ling et al., 2006; Murrell et al., 2004; Phillips and Corces, 2009). It is also implicated to have roles in sister chromatid cohesion during DNA replication, as CTCF has been shown to interact with the STAG1

	Gene/ Region	Placentals			Monotremes (Platypus)			Birds (Chicken)		
		% SD	N	Reference	% SD	N	Reference	% SD	N	Reference
Sex chromo- some specific regions	<i>Xist</i>	39% Mus	138	(Gribnau et al., 2005)	NA					
	<i>Mecp2</i>	33% Mus	108	(Gribnau et al., 2005)						
	<i>Smcx</i>	38% Mus	157	(Gribnau et al., 2005)						
	OGN	NA			22%	587	(Ho et al., 2009)			
	APC				29%	420	(Ho et al., 2009)			
Imprin- ted genes (in euther- ians)	<i>Igf2</i>	23% Mus	>100	(Kitsberg et al., 1993)	NA			25%*	258	(Dünzinger et al., 2005)
	<i>Igf2R</i>	35% Mus	>100	(Kitsberg et al., 1993)				22%	279	(Dünzinger et al., 2005)
	<i>Mest/Co pg2</i>	25% HSA	>200	(Bentley et al., 2003)				18%	299	(Dünzinger et al., 2005)
Allelic exclu- sion	<i>TCRβ</i>	46% Mus	100- 300	(Mostoslavsk y et al., 2001)	NA					
	<i>B-cell receptor (κ)</i>	48% Mus	100- 300	(Mostoslav- sky et al., 2001)						
	<i>IL-2</i>	68% Mus	100	(Hollander et al., 1998)						
	<i>Olfactory receptor</i>	31% Mus	> 99	(Simon et al., 1999)						

Table 1. A subset of the asynchronous replication data that exists for genes/genomic regions which are sex chromosome specific, imprinted (in eutherians), or undergo allelic exclusion.

subunit of cohesin and localize cohesin to specific CTCF binding sites on chromosome arms (Parelho et al., 2008; Rubio et al., 2008). Important in this context is that the CTCF protein has been shown to mediate asynchronous replication and imprinting control for the *Igf2-H19* cluster (Bergstrom et al., 2007).

6.1 The evolution of CTCF

The CTCF protein is highly conserved across higher eukaryotes, and the active site shows close to 100% homology between mouse, human and chicken suggesting that the protein has a highly conserved role (Ohlsson et al., 2001). A *CTCF* gene duplication event is believed to have occurred in the amniote ancestor preceding the divergence of reptiles and birds, as they both have functional CTCF, but not its gene paralogue, *BORIS* (brother of regulator of imprinted sites) (Hore et al., 2008). *BORIS* has similar DNA binding capabilities to CTCF, but shows antagonistic epigenetic regulation to *CTCF*, as well as gonad-specific expression in placental and marsupial mammals (Hore et al., 2008). Conversely, *BORIS* appears to be widely expressed in monotremes and reptiles, indicating that the gene underwent a

functional change after the divergence of therian mammals, which is interesting because as yet, there is no evidence that CTCF binding sites exist in the genomes of earlier diverged monotreme mammals (Hore et al., 2008; Weidman et al., 2004). However, CTCF sites have been observed in the chicken genome which is an earlier-split vertebrate than the monotreme clade, and tied with the evidence that CTCF binding occurs in therian genomes (Baniahmad et al., 1990; Lobanenko et al., 1990), it is likely that CTCF sites exist in the monotreme genome.

6.2 CTCF and genome organization

It is hypothesised that although chromatin fibres are subjected to random contacts, and thus will always inhabit slightly different positions in the nucleus, the characteristics of the interacting regions on chromosomes allow interactions to occur (de Laat and Grosveld, 2007). Furthermore, it has been argued that genomic regions preferentially interact with other genomic regions that have similar characteristics to their own, such as regions that share CTCF binding (de Laat and Grosveld, 2007). It has been hypothesised that regions of a chromosome which undergo similar replication timing, like asynchronously replicating genes, may be pulled into similar replication domains (Ryba et al., 2010; Singh et al., 2003). Within the mammalian cell nucleus, chromatin from separate chromosomes is organised into the aforementioned chromosome territories. Within these CTs, a higher order of chromatin structure exists, where domains containing specific chromosomal arms and bands have been found to be located in the nucleus in similar regions of certain cell types (Dietzel et al., 1998). Genes are readily transcribed when they reside on the periphery of chromosome territories, and can even loop out of the territories. Furthermore, genes that are late-replicating and inactivated are often seen to reside on the outer regions of chromosome territories near the nuclear periphery. Looping of the chromatin fibres allows genes to easily interact with the transcriptional machinery residing in the interchromatin compartments (Cremer and Cremer, 2001; Osborne et al., 2004). Imprinted and allelic exclusion genes often 'loop out' and undergo long-range interactions for regulatory purposes (Ling and Hoffman, 2007; Lomvardas et al., 2006).

A good example of CTCF controlling some of the discussed epigenetic, replication, and transcriptional mechanisms occurs at the imprinted *Igf2/H19* domain. The ICR for this imprinted cluster lies between these two genes, in the 5' flanking sequence of *H19*, and the maternal allele interacts with CTCF (Kurukuti et al., 2006). CTCF regulates and insulates imprinted gene transcription for the *Igf2/H19* region by controlling the intrachromosomal interactions of the maternal and paternal alleles (Murrell et al., 2004). When endogenous CTCF is knocked-down in mice, loss of *Igf2* imprinting is observed, whilst deletion of the ICR leads to biallelic expression of *H19* (Ling et al., 2006). In mouse, the paternal chromosome forms a DNA loop between the differentially methylated region (DMR) 2, present in the *Igf2* gene, and the methylated ICR, aided by putative binding factors (Murrell et al., 2004). When the paternal *Igf2* allele promoter comes into close proximity with the *H19* enhancer elements, *Igf2* transcription occurs (Murrell et al., 2004). The DMR1 on the maternal chromosome interacts with the unmethylated ICR, which causes the maternal *Igf2* allele to be sequestered into a transcriptional silencing loop. This causes the maternal *H19* allele to become proximal to its enhancers, allowing it to be expressed (Murrell et al., 2004). Conversely, CTCF also facilitates an interchromosomal interaction in mouse between the *Igf2/H19* domain, and the *Wsb1/Nf1* region on a different chromosome (Ling et al., 2006).

Specifically, the ICR in the imprinted *Igf2/H19* domain, which contains CTCF binding sites, has been found to interact with another region with CTCF binding sites between the *Wsb1* (WD repeat and SOCS box-containing 1) and *Nf1* (Neurofibromin 1) genes (Ling et al., 2006). Whilst the *Wsb1* and *Nf1* do not appear to be imprinted, as their expression is biallelic, only the paternal copy of the *Wsb1/Nf1* region interacts with CTCF (Krueger and Osborne, 2006; Ling et al., 2006). As explained before, CTCF only binds the maternal copy of the ICR region (flanked by *Igf2* and *H19*). It is consequently hypothesized that the long-range interaction observed between the ICR and *Wsb1/Nf1* region occurs between the maternal and paternal copies respectively, and is mediated by the genome-organizing protein CTCF (Ling et al., 2006).

6.3 Replication timing and CTCF

The specific binding of CTCF at the maternal ICR in the mouse *Igf2/H19* domain has been shown to mediate asynchronous replication in this imprinted region (Bergstrom et al., 2007). The inheritance of a mutated maternal ICR, which lacks CTCF binding, caused the usually late replicating maternal *Igf2/H19* domain to become early replicating (Bergstrom et al., 2007) showing that CTCF binding is required for asynchronous replication of these loci. The mechanism by which CTCF might regulate asynchronous replication at this domain, however, is still unclear. In addition to replication CTCF is involved in other epigenetic effects, including long-range interactions (both intrachromosomal and interchromosomal), insulator activity and transcriptional activation (Kurukuti et al., 2006; Ohlsson et al., 2001; Zhao et al., 2006). Notably, it has been shown that regions which undergo greater amounts of long-range chromatin interaction are subject to late replication timing (Ryba et al., 2010). Another example of the close relationship between replication, CTCF, and methylation occurs at the differentially methylated silencer region controlling the expression of the *AWT1/WT1-AS* genes (Hancock et al., 2007). The CTCF protein can only bind the late-replicating unmethylated paternal silencer region within the *AWT1/WT1-AS* cluster, allowing expression of the paternal alleles. The homologous early-replicating maternal region however, has a methylated silencer which does not facilitate CTCF binding and so the maternal *AWT1/WT1-AS* alleles are not expressed (Hancock et al., 2007). It is interesting to speculate as to whether CTCF also controls the asynchronous replication observed at the *WT1* locus in human, and perhaps even in birds (Bickmore and Carothers, 1995; Dünzinger et al., 2005). It is also interesting to note that in both cases the late-replicating allele at these imprinted loci, namely in the maternal *Igf2/H19* allele and the paternal *AWT1/WT1-AS* allele, is the allele which binds CTCF (Bergstrom et al., 2007; Bickmore and Carothers, 1995; Hancock et al., 2007). Whilst CTCF is observed to mediate asynchronous replication and imprinting at the *Igf2/H19* domain in eutherian mammals, the fact that the imprinted orthologs of *Igf2/H19* and *AWT1/WT1-AS* still asynchronously replicate could suggest that CTCF binding in these regions evolved before establishment of genomic imprinting.

6.4 The role of CTCF in replication timing changes in cancer

CTCF may also play a role in the progression of cancer and has many of the characteristics of a tumour suppressor gene; in the human genome it maps to a small region, 16q22.1, which characteristically undergoes loss of heterozygosity in many solid tumours (reviewed in Filippova et al., 1998). Furthermore, changes in DNA consensus sites and DNA methylation patterns in cancers are known to cause loss of CTCF binding, which could result in the loss of functional control of these regions (Filippova et al., 2002; Ohlsson et al., 2001). The regions required for zinc-finger formation, and their corresponding DNA binding

sites are often mutated in tumours, changing the CTCF binding-landscape of a genome (Filippova et al., 2002). Specifically, the presence of these mutations in tumours was observed to abolish CTCF's association with the *Igf2/H19* growth regulating genes, whilst not changing its association with non-growth regulating genes (Filippova et al., 2002; Ohlsson et al., 2001). The loss of CTCF association with the *Igf2/H19* region in tumours could be associated with a shift in replication asynchrony. As mentioned in the previous section, when CTCF binding is abolished in the maternal *Igf2/H19* region it results in the loss of asynchronous replication at the locus (Bergstrom et al., 2007). Furthermore, omission of CTCF binding to the maternal *Igf2/H19* ICR has also been observed to abrogate inter-chromosomal interactions for this region (Ling et al., 2006). These results all indicate that the loss of CTCF binding for specific genomic regions in tumours has downstream epigenetic effects, such as loss of replication asynchrony and chromatin interaction, for the genes usually involved in CTCF-interaction.

7. Evolution of replication timing and epigenetic control

7.1 The evolution of replication timing

At the genome level, recent work shows that asynchronous replication pre-dates the establishment of monoallelic expression and genomic imprinting (Zechner et al. 2006, Wright et al. in preparation). The bird genome, which lacks genomic imprinting, contains conserved regions of mammalian imprinted gene orthologs that are asynchronously replicated (Dünzinger et al., 2005). This indicates that asynchronous replication most likely predates imprinting, and that the common vertebrate ancestor of mammals and birds had genomic regions with a 'pre-imprinted' status which still underwent asynchronous replication without any form of traditional imprinting (Dünzinger et al., 2005). It is interesting to note that a recent genome-wide study has indicated that regions with conserved synteny also have conserved replication profiles among human and mouse (e.g. Ryba et al., 2010). Imprinted clusters are renowned for having conserved synteny, and it has been suggested that the selection of highly conserved arrays of imprinted gene orthologs occurred during vertebrate evolution, however why these regions were selected for syntenic conservation has been difficult to explain (Dünzinger et al., 2005).

At the replicon level, there has been a model proposing that spatiotemporal properties of mammalian ORs contribute to a combination of pre-determined and stochastic DNA replication (Takahashi, 1987). This mechanism is echoed in budding yeast, which also shows OR activation in a combined chronological and stochastic manner (Barberis et al., 2010; Spiesser et al., 2009). This model, combined with the finding that conserved syntenic regions in human and mouse have very similar replication profiles, indicates that there is a conservation of the temporal programme controlling replicon firing. Furthermore there appears to be a highly conserved order in which amniote imprinted genes or imprinted gene orthologs replicate; with individual imprinted genes following similar temporal patterns when entering replication in birds, monotremes, and eutherians (Wright et al. in preparation). This indicates that in closer related clades of eukaryotes, this temporal replication program may be highly conserved.

7.2 The chromatin interactome and replication profiling

Developing molecular technologies are allowing greater insights into the many interactions occurring in a genome, but also showing how spatial organisation can affect other processes

in a genome, such as replication timing. Extensions of the previously discussed 3C molecular interaction technology include Associative Chromosome Trap (ACT), Circular Chromosome Conformation Capture or Chromosome Conformation Capture-on-Chip (4C), and Carbon-Copy Chromosome Conformation Capture (5C), all of which can measure more than a single to single region interaction (Dekker et al., 2002; Dostie et al., 2006; Ling et al., 2006; Simonis et al., 2006; Zhao et al., 2006). In addition to these technologies, new techniques are allowing interactions to be measured across entire genomes, resulting in the mapping of an “interactome”, whereby all the long-range interactions occurring in a genome are measured (Fullwood et al., 2009; Lieberman-Aiden et al., 2009). Specifically, there are two techniques that have been developed to do this, Chromatin Interaction Analysis by Paired-End Tag sequencing (ChIA-PET) and Hi-C (which measures the three-dimensional architecture of a genome by coupling proximity-based ligation with parallel sequencing) (Fullwood et al., 2009; Lieberman-Aiden et al., 2009). These experiments, in conjunction with replication-timing profiling by microarrays, have indicated that the interactome of a genome is very closely aligned with replication timing (Ryba et al., 2010).

The chromatin “interactome” is now understood to play a critical part in genome organisation; allowing complex regulatory networks of interactions to occur, each of which with functional significance, all of which highly dynamic and organised within a nucleus by proteins such as CTCF and the Estrogen-receptor alpha (Botta et al., 2010; Fullwood et al., 2009). These interactions also appear to be conserved in similar cell types across mammalian evolution, suggesting that perhaps these long-range interactions are part of an evolutionary conserved mechanism of spatial organisation (Ryba et al., 2010). Furthermore, initiation of replication appears to be an evolutionarily conserved process across eukaryotic evolution, and the overlay of entire genome replication timing profiles with interactome maps have shown that late-replicating regions are often undergoing greater amounts of long-range interaction (Ryba et al., 2010). These findings, in conjunction with asynchronous replication data, could indicate that long-range interactions which occur in abundance at imprinted and monoallelically expressed loci, are affecting asynchronous replication. Specifically, there is data supporting the argument that the allele undergoing long-range interaction could also be the allele which undergoes late-replication. Firstly, it has been observed that asynchronously replicated alleles often localize to spatially distinct regions in a nucleus (Gribnau et al., 2003; Sadoni et al., 1999). Secondly, as mentioned previously, the late-replicating maternal *Igf2/H19* allele and the paternal *AWT1/WT1-AS* allele, are also the alleles which bind CTCF, in an imprinting dependent manner. It could be that the binding of proteins which mediate long-range chromatin interaction at these alleles is facilitating greater amounts of interaction, which is reflected in their late replicating status, and also in the asynchronous replication of these genes (Bergstrom et al., 2007; Bickmore and Carothers, 1995; Hancock et al., 2007).

7.3 Measuring replication to combat cancer

It has been proposed that measuring changes in replication profiles may be a way of detecting abnormalities associated with cancer, not observed through usual techniques (reviewed in Watanabe and Maekawa, 2010). Epigenetic reprogramming in diseased cells is often observed to occur with changes in replication timing patterns, with changes in replication being observed with chromosomal rearrangements in cancer cell lines (D'Antoni et al., 2004; Gondor and Ohlsson, 2009; State et al., 2003). Better detection of prostate cancer

may come in the form of measuring replication timing changes observed in peripheral blood lymphocytes undergoing aneuploidy (Dotan et al., 2004). In terms of protein detection of cancer, measuring the function of the tumour suppressor gene p53, may be a good determinant in the progression of cancer. P53 is the most commonly mutated gene in human cancers, and is a G1/S-phase and S-phase checkpoint regulator during DNA replication. Loss of its function is observed to affect the replication timing of human colon carcinoma cells (Watanabe et al., 2007).

Changes in replication timing may also be affected by altered function of CTCF in cancer. As mentioned previously, it has been observed that mutation of CTCF binding sites near growth factor genes, such as in the *Igf2/H19* region, occurs in many tumours (Filippova et al., 2002). These mutations may cause a loss of CTCF binding in the region, which has been observed to abolish asynchronous replication of the *Igf2* locus, and changes the replication timing of the gene (Bergstrom et al., 2007). However the mutation of CTCF binding sites would also change the interactome profile of a cell. Loss of CTCF-binding through mutation around genes like *Igf2* and *H19* would result in them no longer undergoing their “normal” chromatin interactions, perhaps causing different spatial organization of these loci in the nucleus of a cancerous cell.

7.4 The chromatin interactome: controlling eukaryotic replication timing

To date there is a lack of data that could provide insight about the evolution of an interactome. It has been observed that many long-range interacting regions share many of the same (but not necessarily all) epigenetic characteristics, such as asynchronous replication, monoallelic expression, differentially methylated regions and histone modifications and variants, imprinting, and CTCF binding. It is currently unknown how these epigenetic events evolved and investigating those epigenetic features in a range of vertebrate genomes could tease apart the sequence of events that has led to a complex network of epigenetic regulation.

Chromatin interactions may have evolved in many genomic control processes, but it is the binding of master genome regulators, like CTCF, which dictate where these interactions can occur. The CTCF protein is highly conserved among amniotes, conserved in vertebrates, and exists in *Drosophila* and subsets of nematodes (Heger et al., 2009; Ohlsson et al., 2001). Furthermore, there is evidence to suggest that CTCF binding and function are conserved in humans, mouse, and chicken, in genes such as β -globin, whereby CTCF binding at this locus allows cell-type specific intrachromosomal interactions to occur (Bell et al., 1999; Yusufzai et al., 2004). CTCF binding and chromatin interaction in this region suggest that CTCF spatial control of chromatin, at least in this region, was present in the common ancestor of amniotes. The evolutionary conservation of replication timing and the strikingly similar genomic interactome in similar cell types among human and mouse suggests that replication timing is intrinsically tied to long-range interaction. Moreover, there is evidence to suggest that replication timing relies on the presence of long-range interactions at specific loci, with the knockdown of long-range mediator proteins causing interactions to be abolished, and also causing replication asynchrony to cease (Bergstrom et al., 2007; Fullwood et al., 2009; Ling et al., 2006). The loss of replication asynchrony in this case could be due to ectopic spatial organisation of the alleles, whereby the loss of the interaction mediator protein causes the allele of a locus to reside in an atypical subnuclear domain. This irregular replication domain would not have the correct molecular and chemical

characteristics to allow the ORs of the spatially ectopic allele to fire in the normal temporal order. This could cause the erroneous firing of ORs in such a way as to abolish replication asynchrony at the locus.

8. Conclusion

Replication timing of DNA at S-phase is tightly regulated and affects gene activity, nuclear organisation, as well as other aspects of genome biology. Differences in replication timing have been used to identify individual chromosomes and differentiated sex chromosomes for several decades. Since then, an increasing number of proteins have been identified as important for regulating replication timing and genome-wide approaches are now used to study replication timing. A fascinating variation of the replication-timing theme is asynchronous replication, which appears to be closely aligned with other epigenetic mechanisms involved in long-range interaction, genomic imprinting and X chromosome inactivation. Whilst previous research has stipulated that asynchronous replication and long range interactions have evolved as a result of epigenetic control of (eg. monoallelic expression), there is emerging evidence that both predate the presence of other epigenetic processes. We suggest that the interactome has played a role in the evolution of spatial nuclear organisation. In addition, mutations in sequences important for long-range interaction and replication timing, and also changes in the replication timing program itself, are important factors influencing a diverse array of human diseases, including cancer. The study of replication timing in different organisms and in human disease will reveal the full extent to which replication timing contributes to the epigenetic landscape in normal and abnormal cells.

9. Acknowledgements

Megan L. Wright is funded by an Australian Postgraduate Award. Frank Grutzner is an ARC Senior Research Fellow.

10. References

- Aladjem, M. I., Groudine, M., Brody, L. L., Dieken, E. S., Fournier, R. E., Wahl, G. M. and Epner, E. M. (1995). Participation of the human beta-globin locus control region in initiation of DNA replication. *Science* 270, 815-9.
- Alexander, M. K., Mlynarczyk-Evans, S., Royce-Tolland, M., Plocik, A., Kalantry, S., Magnuson, T. and Panning, B. (2007). Differences between homologous alleles of olfactory receptor genes require the Polycomb Group protein Eed. *J Cell Biol* 179, 269-76.
- Altman, A. L. and Fanning, E. (2004). Defined sequence modules and an architectural element cooperate to promote initiation at an ectopic mammalian chromosomal replication origin. *Mol Cell Biol* 24, 4138-50.
- Anglana, M., Apiou, F., Bensimon, A. and Debatisse, M. (2003). Dynamics of DNA replication in mammalian somatic cells: nucleotide pool modulates origin choice and interorigin spacing. *Cell* 114, 385-94.
- Arnold, A. P., Itoh, Y. and Melamed, E. (2008). A bird's-eye view of sex chromosome dosage compensation. *Annu Rev Genomics Hum Genet* 9, 109-27.

- Aten, J. A. and Kanaar, R. (2006). Chromosomal organization: mingling with the neighbors. *PLoS Biol* 4, e155.
- Austin, R. J., Orr-Weaver, T. L. and Bell, S. P. (1999). Drosophila ORC specifically binds to ACE3, an origin of DNA replication control element. *Genes Dev* 13, 2639-49.
- Baniahmad, A., Steiner, C., Kohne, A. C. and Renkawitz, R. (1990). Modular structure of a chicken lysozyme silencer: involvement of an unusual thyroid hormone receptor binding site. *Cell* 61, 505-14.
- Baran, N., Lapidot, A. and Manor, H. (1991). Formation of DNA triplexes accounts for arrests of DNA synthesis at d(TC)n and d(GA)n tracts. *Proceedings of the National Academy of Sciences* 88, 507-511.
- Barberis, M., Spiesser, T. W. and Klipp, E. (2010). Replication origins and timing of temporal replication in budding yeast: how to solve the conundrum? *Curr Genomics* 11, 199-211.
- Bartolomei, M. S. (2009). Genomic imprinting: employing and avoiding epigenetic processes. *Genes Dev* 23, 2124-33.
- Baumer, A., Riegel, M. and Schinzel, A. (2004). Non-random asynchronous replication at 22q11.2 favours unequal meiotic crossovers leading to the human 22q11.2 deletion. *Journal of Medical Genetics* 41, 413-420.
- Bell, A. C., West, A. G. and Felsenfeld, G. (1999). The Protein CTCF Is Required for the Enhancer Blocking Activity of Vertebrate Insulators. *Cell* 98, 387-396.
- Bell, S. P. and Stillman, B. (1992). ATP-dependent recognition of eukaryotic origins of DNA replication by a multiprotein complex. *Nature* 357, 128-34.
- Bentley, L., Nakabayashi, K., Monk, D., Beechey, C., Peters, J., Birjandi, Z., Khayat, F. E., Patel, M., Preece, M. A., Stanier, P. et al. (2003). The imprinted region on human chromosome 7q32 extends to the carboxypeptidase A gene cluster: an imprinted candidate for Silver-Russell syndrome. *J Med Genet* 40, 249-56.
- Bergstrom, R., Whitehead, J., Kurukuti, S. and Ohlsson, R. (2007). CTCF regulates asynchronous replication of the imprinted H19/Igf2 domain. *Cell Cycle* 6, 450-4.
- Bernardi, G. (1995). The human genome: organization and evolutionary history. *Annu Rev Genet* 29, 445-76.
- Bickmore, W. A. and Carothers, A. D. (1995). Factors affecting the timing and imprinting of replication on a mammalian chromosome. *J Cell Sci* 108 (Pt 8), 2801-9.
- Biederman, B. and Lin, C. C. (1979). R-banding methods for chromosome identification using acridine orange following heat denaturation (RFA) and bromodeoxyuridine labeling (RBA). *Methods in Cell Science* 5, 1189-1192.
- Blow, J. J. and Ge, X. Q. (2009). A model for DNA replication showing how dormant origins safeguard against replication fork failure. *EMBO Rep* 10, 406-12.
- Botta, M., Haider, S., Leung, I. X. Y., Lio, P. and Mozziconacci, J. (2010). Intra- and inter-chromosomal interactions correlate with CTCF binding genome wide. *Mol Syst Biol* 6.
- Boumil, R. M. and Lee, J. T. (2001). Forty years of decoding the silence in X-chromosome inactivation. *Hum Mol Genet* 10, 2225-32.
- Branco, M. R. and Pombo, A. (2006). Intermingling of chromosome territories in interphase suggests role in translocations and transcription-dependent associations. *PLoS Biol* 4, e138.

- Brewer, B. J. and Fangman, W. L. (1993). Initiation at closely spaced replication origins in a yeast chromosome. *Science* 262, 1728-31.
- Brinton, B. T., Caddle, M. S. and Heintz, N. H. (1991). Position and orientation-dependent effects of a eukaryotic Z-triplex DNA motif on episomal DNA replication in COS-7 cells. *Journal of Biological Chemistry* 266, 5153-5161.
- Brockdorff, N., Ashworth, A., Kay, G. F., Cooper, P., Smith, S., McCabe, V. M., Norris, D. P., Penny, G. D., Patel, D. and Rastan, S. (1991). Conservation of position and exclusive expression of mouse Xist from the inactive X chromosome. *Nature* 351, 329-31.
- Brown, C. J., Ballabio, A., Rupert, J. L., Lafreniere, R. G., Grompe, M., Tonlorenzi, R. and Willard, H. F. (1991). A gene from the region of the human X inactivation centre is expressed exclusively from the inactive X chromosome. *Nature* 349, 38-44.
- Burke, T. W., Cook, J. G., Asano, M. and Nevins, J. R. (2001). Replication factors MCM2 and ORC1 interact with the histone acetyltransferase HBO1. *J Biol Chem* 276, 15397-408.
- Chess, A., Simon, I., Cedar, H. and Axel, R. (1994). Allelic inactivation regulates olfactory receptor gene expression. *Cell* 78, 823-34.
- Chuang, R. Y. and Kelly, T. J. (1999). The fission yeast homologue of Orc4p binds to replication origin DNA via multiple AT-hooks. *Proc Natl Acad Sci U S A* 96, 2656-61.
- Clerc, P. and Avner, P. (2003). Multiple elements within the Xic regulate random X inactivation in mice. *Semin Cell Dev Biol* 14, 85-92.
- Consortium, I. C. G. S. (2004). Sequence and comparative analysis of the chicken genome provide unique perspectives on vertebrate evolution. *Nature* 432, 695-716.
- Costantini, M. and Bernardi, G. (2008). Replication timing, chromosomal bands, and isochores. *Proc Natl Acad Sci U S A* 105, 3433-7.
- Costantini, M., Clay, O., Auletta, F. and Bernardi, G. (2006). An isochore map of human chromosomes. *Genome Res* 16, 536-41.
- Costantini, M., Clay, O., Federico, C., Saccone, S., Auletta, F. and Bernardi, G. (2007). Human chromosomal bands: nested structure, high-definition map and molecular basis. *Chromosoma* 116, 29-40.
- Courbet, S., Gay, S., Arnoult, N., Wronka, G., Anglana, M., Brison, O. and Debatisse, M. (2008). Replication fork movement sets chromatin loop size and origin choice in mammalian cells. *Nature* 455, 557-60.
- Cremer, T. and Cremer, C. (2001). Chromosome territories, nuclear architecture and gene regulation in mammalian cells. *Nat Rev Genet* 2, 292-301.
- Cremer, T. and Cremer, M. (2010). Chromosome territories. *Cold Spring Harb Perspect Biol* 2, a003889.
- D'Antoni, S., Mattina, T., Di Mare, P., Federico, C., Motta, S. and Saccone, S. (2004). Altered replication timing of the HIRA/Tuple1 locus in the DiGeorge and Velocardiofacial syndromes. *Gene* 333, 111-119.
- Davidow, L. S., Breen, M., Duke, S. E., Samollow, P. B., McCarrey, J. R. and Lee, J. T. (2007). The search for a marsupial XIC reveals a break with vertebrate synteny. *Chromosome Res* 15, 137-46.
- de Laat, W. and Grosveld, F. (2007). Inter-chromosomal gene regulation in the mammalian cell nucleus. *Curr Opin Genet Dev* 17, 456-64.
- Deakin, J. E., Hore, T. A., Koina, E. and Marshall Graves, J. A. (2008a). The status of dosage compensation in the multiple X chromosomes of the platypus. *PLoS Genet* 4, e1000140.

- Deakin, J. E., Koina, E., Waters, P. D., Doherty, R., Patel, V. S., Delbridge, M. L., Dobson, B., Fong, J., Hu, Y., van den Hurk, C. et al. (2008b). Physical map of two tammar wallaby chromosomes: a strategy for mapping in non-model mammals. *Chromosome Res* 16, 1159-75.
- Debatisse, M., El Achkar, E. and Dutrillaux, B. (2006). Common fragile sites nested at the interfaces of early and late-replicating chromosome bands: cis acting components of the G2/M checkpoint? *Cell Cycle* 5, 578-81.
- Debatisse, M., Toledo, F. and Anglana, M. (2004). Replication initiation in mammalian cells: changing preferences. *Cell Cycle* 3, 19-21.
- Dekker, J., Rippe, K., Dekker, M. and Kleckner, N. (2002). Capturing chromosome conformation. *Science* 295, 1306-11.
- Delcuve, G. P., Rastegar, M. and Davie, J. R. (2009). Epigenetic control. *Journal of Cellular Physiology* 219, 243-250.
- DePamphilis, M. L. (2006). DNA replication and human disease. New York: Cold Spring Harbor Laboratory Press.
- Dietzel, S., Jauch, A., Kienle, D., Qu, G., Holtgreve-Grez, H., Eils, R., Munkel, C., Bittner, M., Meltzer, P. S., Trent, J. M. et al. (1998). Separate and variably shaped chromosome arm domains are disclosed by chromosome arm painting in human cell nuclei. *Chromosome Res* 6, 25-33.
- Doksani, Y., Bermejo, R., Fiorani, S., Haber, J. E. and Foiani, M. (2009). Replicon dynamics, dormant origin firing, and terminal fork integrity after double-strand break formation. *Cell* 137, 247-58.
- Dostie, J. e., Richmond, T. A., Arnaout, R. A., Selzer, R. R., Lee, W. L., Honan, T. A., Rubio, E. D., Krumm, A., Lamb, J., Nusbaum, C. et al. (2006). Chromosome Conformation Capture Carbon Copy (5C): A massively parallel solution for mapping interactions between genomic elements. *Genome Research* 16, 1299-1309.
- Dotan, Z. A., Dotan, A., Ramon, J. and Avivi, L. (2004). Altered mode of allelic replication accompanied by aneuploidy in peripheral blood lymphocytes of prostate cancer patients, vol. 111 (ed., pp. 60-66: Wiley Subscription Services, Inc., A Wiley Company.
- Drets, M. E., Folle, G. A. and Comings, D. E. (1978). Mechanisms of chromosome banding. X. Chromosome and nuclear changes induced by photo-oxidation and their relation to R-banding with anti-C antibodies. *Chromosoma* 69, 101-12.
- Dünzinger, U., Nanda, I., Schmid, M., Haaf, T. and Zechner, U. (2005). Chicken orthologues of mammalian imprinted genes are clustered on macrochromosomes and replicate asynchronously. *Trends in Genetics* 21, 488-492.
- Duret, L., Chureau, C., Samain, S., Weissenbach, J. and Avner, P. (2006). The Xist RNA gene evolved in eutherians by pseudogenization of a protein-coding gene. *Science* 312, 1653-5.
- Edwards, C. A. and Ferguson-Smith, A. C. (2007). Mechanisms regulating imprinted genes in clusters. *Current Opinion in Cell Biology* 19, 281-289.
- Edwards, M. C., Tutter, A. V., Cvetic, C., Gilbert, C. H., Prokhorova, T. A. and Walter, J. C. (2002). MCM2-7 complexes bind chromatin in a distributed pattern surrounding the origin recognition complex in *Xenopus* egg extracts. *J Biol Chem* 277, 33049-57.

- Farkash-Amar, S., Lipson, D., Polten, A., Goren, A., Helmstetter, C., Yakhini, Z. and Simon, I. (2008). Global organization of replication time zones of the mouse genome. *Genome Res* 18, 1562-70.
- Ferguson, B. M. and Fangman, W. L. (1992). A position effect on the time of replication origin activation in yeast. *Cell* 68, 333-9.
- Filippova, G. N., Lindblom, A., Meincke, L. J., Klenova, E. M., Neiman, P. E., Collins, S. J., Doggett, N. A. and Lobanenko, V. V. (1998). A widely expressed transcription factor with multiple DNA sequence specificity, CTCF, is localized at chromosome segment 16q22.1 within one of the smallest regions of overlap for common deletions in breast and prostate cancers. *Genes Chromosomes Cancer* 22, 26-36.
- Filippova, G. N., Qi, C. F., Ulmer, J. E., Moore, J. M., Ward, M. D., Hu, Y. J., Loukinov, D. I., Pugacheva, E. M., Klenova, E. M., Grundy, P. E. et al. (2002). Tumor-associated zinc finger mutations in the CTCF transcription factor selectively alter its DNA-binding specificity. *Cancer Res* 62, 48-52.
- Friedman, K. L., Diller, J. D., Ferguson, B. M., Nyland, S. V., Brewer, B. J. and Fangman, W. L. (1996). Multiple determinants controlling activation of yeast replication origins late in S phase. *Genes Dev* 10, 1595-607.
- Fullwood, M. J., Liu, M. H., Pan, Y. F., Liu, J., Xu, H., Mohamed, Y. B., Orlov, Y. L., Velkov, S., Ho, A., Mei, P. H. et al. (2009). An oestrogen-receptor-[agr]-bound human chromatin interactome. *Nature* 462, 58-64.
- Fuss, S. H., Omura, M. and Mombaerts, P. (2007). Local and cis effects of the H element on expression of odorant receptor genes in mouse. *Cell* 130, 373-84.
- Ge, X. Q., Jackson, D. A. and Blow, J. J. (2007). Dormant origins licensed by excess Mcm2-7 are required for human cells to survive replicative stress. *Genes Dev* 21, 3331-41.
- Gilbert, D. M. (2002). Replication timing and transcriptional control: beyond cause and effect. *Curr Opin Cell Biol* 14, 377-83.
- Gilbert, D. M. (2010). Evaluating genome-scale approaches to eukaryotic DNA replication. *Nat Rev Genet* 11, 673-84.
- Gimelbrant, A. A., Ensminger, A. W., Qi, P., Zucker, J. and Chess, A. (2005). Monoallelic expression and asynchronous replication of p120 catenin in mouse and human cells. *J Biol Chem* 280, 1354-9.
- Glusman, G., Yanai, I., Rubin, I. and Lancet, D. (2001). The complete human olfactory subgenome. *Genome Res* 11, 685-702.
- Godfrey, P. A., Malnic, B. and Buck, L. B. (2004). The mouse olfactory receptor gene family. *Proc Natl Acad Sci U S A* 101, 2156-61.
- Goldmit, M., Schlissel, M., Cedar, H. and Bergman, Y. (2002). Differential accessibility at the kappa chain locus plays a role in allelic exclusion. *EMBO J* 21, 5255-61.
- Gondor, A. and Ohlsson, R. (2009). Replication timing and epigenetic reprogramming of gene expression: a two-way relationship? *Nat Rev Genet* 10, 269-276.
- Gribnau, J., Hochedlinger, K., Hata, K., Li, E. and Jaenisch, R. (2003). Asynchronous replication timing of imprinted loci is independent of DNA methylation, but consistent with differential subnuclear localization. *Genes Dev* 17, 759-73.
- Gribnau, J., Luikenhuis, S., Hochedlinger, K., Monkhorst, K. and Jaenisch, R. (2005). X chromosome choice occurs independently of asynchronous replication timing. *J Cell Biol* 168, 365-73.

- Grutzner, F., Rens, W., Tsend-Ayush, E., El-Mogharbel, N., O'Brien, P. C., Jones, R. C., Ferguson-Smith, M. A. and Marshall Graves, J. A. (2004). In the platypus a meiotic chain of ten sex chromosomes shares genes with the bird Z and mammal X chromosomes. *Nature* 432, 913-7.
- Grutzner, F., Zend-Ajus, E., Stout, K., Munsche, S., Niveleau, A., Nanda, I., Schmid, M. and Haaf, T. (2001). Chicken microchromosomes are hypermethylated and can be identified by specific painting probes. *Cytogenet Cell Genet* 93, 265-9.
- Haase, S. B., Heinz, S. S. and Calos, M. P. (1994). Transcription inhibits the replication of autonomously replicating plasmids in human cells. *Mol Cell Biol* 14, 2516-24.
- Hancock, A. L., Brown, K. W., Moorwood, K., Moon, H., Holmgren, C., Mardikar, S. H., Dallosso, A. R., Klenova, E., Loukinov, D., Ohlsson, R. et al. (2007). A CTCF-binding silencer regulates the imprinted genes AWT1 and WT1-AS and exhibits sequential epigenetic defects during Wilms' tumorigenesis. *Hum Mol Genet* 16, 343-54.
- Hayashida, T., Oda, M., Ohsawa, K., Yamaguchi, A., Hosozawa, T., Locksley, R. M., Giacca, M., Masai, H. and Miyatake, S. (2006). Replication initiation from a novel origin identified in the Th2 cytokine cluster locus requires a distant conserved noncoding sequence. *J Immunol* 176, 5446-54.
- Heard, E. (2005). Delving into the diversity of facultative heterochromatin: the epigenetics of the inactive X chromosome. *Curr Opin Genet Dev* 15, 482-9.
- Heger, P., Marin, B. and Schierenberg, E. (2009). Loss of the insulator protein CTCF during nematode evolution. *BMC Molecular Biology* 10, 84.
- Hellman, A. and Chess, A. (2007). Gene body-specific methylation on the active X chromosome. *Science* 315, 1141-3.
- Heun, P., Laroche, T., Raghuraman, M. K. and Gasser, S. M. (2001). The positioning and dynamics of origins of replication in the budding yeast nucleus. *J Cell Biol* 152, 385-400.
- Hiratani, I. and Gilbert, D. M. (2009). Replication timing as an epigenetic mark. *Epigenetics* 4, 93-7.
- Hiratani, I., Ryba, T., Itoh, M., Yokochi, T., Schwaiger, M., Chang, C. W., Lyo, Y., Townes, T. M., Schubeler, D. and Gilbert, D. M. (2008). Global reorganization of replication domains during embryonic stem cell differentiation. *PLoS Biol* 6, e245.
- Hiratani, I., Takebayashi, S., Lu, J. and Gilbert, D. M. (2009). Replication timing and transcriptional control: beyond cause and effect--part II. *Curr Opin Genet Dev* 19, 142-9.
- Ho, K. K., Deakin, J. E., Wright, M. L., Graves, J. A. M. and Grutzner, F. (2009). Replication asynchrony and differential condensation of X chromosomes in female platypus (*Ornithorhynchus anatinus*). *Reproduction, Fertility and Development* 21, 952-963.
- Hollander, G. A., Zuklys, S., Morel, C., Mizoguchi, E., Mobisson, K., Simpson, S., Terhorst, C., Wishart, W., Golan, D. E., Bhan, A. K. et al. (1998). Monoallelic expression of the interleukin-2 locus. *Science* 279, 2118-21.
- Holmquist, G. P. (1987). Role of replication time in the control of tissue-specific gene expression. *Am J Hum Genet* 40, 151-73.
- Hore, T. A., Deakin, J. E. and Marshall Graves, J. A. (2008). The evolution of epigenetic regulators CTCF and BORIS/CTCF in amniotes. *PLoS Genet* 4, e1000169.

- Hore, T. A., Koina, E., Wakefield, M. J. and Marshall Graves, J. A. (2007). The region homologous to the X-chromosome inactivation centre has been disrupted in marsupial and monotreme mammals. *Chromosome Res* 15, 147-61.
- Hyrien, O., Marheineke, K. and Goldar, A. (2003). Paradoxes of eukaryotic DNA replication: MCM proteins and the random completion problem. *Bioessays* 25, 116-25.
- Ibarra, A., Schwob, E. and Mendez, J. (2008). Excess MCM proteins protect human cells from replicative stress by licensing backup origins of replication. *Proc Natl Acad Sci U S A* 105, 8956-61.
- Iizuka, M., Matsui, T., Takisawa, H. and Smith, M. M. (2006). Regulation of replication licensing by acetyltransferase Hbo1. *Mol Cell Biol* 26, 1098-108.
- Kalejta, R. F., Li, X., Mesner, L. D., Dijkwel, P. A., Lin, H. B. and Hamlin, J. L. (1998). Distal sequences, but not ori-beta/OBR-1, are essential for initiation of DNA replication in the Chinese hamster DHFR origin. *Mol Cell* 2, 797-806.
- Kalish, J. M. and Glazer, P. M. (2005). Targeted genome modification via triple helix formation. *Ann N Y Acad Sci* 1058, 151-61.
- Kambere, M. B. and Lane, R. P. (2007). Co-regulation of a large and rapidly evolving repertoire of odorant receptor genes. *BMC Neurosci* 8 Suppl 3, S2.
- Kitsberg, D., Selig, S., Brandeis, M., Simon, I., Keshet, I., Driscoll, D. J., Nicholls, R. D. and Cedar, H. (1993). Allele-specific replication timing of imprinted gene regions. *Nature* 364, 459-63.
- Knauert, M. P., Kalish, J. M., Hegan, D. C. and Glazer, P. M. (2006). Triplex-stimulated intermolecular recombination at a single-copy genomic target. *Mol Ther* 14, 392-400.
- Knoll, J. H., Cheng, S. D. and Lalande, M. (1994). Allele specificity of DNA replication timing in the Angelman/Prader-Willi syndrome imprinted chromosomal region. *Nat Genet* 6, 41-6.
- Koina, E., Chaumeil, J., Greaves, I. K., Tremethick, D. J. and Graves, J. A. (2009). Specific patterns of histone marks accompany X chromosome inactivation in a marsupial. *Chromosome Res* 17, 115-26.
- Koren, A., Soifer, I. and Barkai, N. (2010). MRC1-dependent scaling of the budding yeast DNA replication timing program. *Genome Res* 20, 781-90.
- Krueger, C. and Osborne, C. S. (2006). Raising the curtains on interchromosomal interactions. *Trends in Genetics* 22, 637-639.
- Kuroda, Y., Arai, N., Arita, M., Teranishi, M., Hori, T., Harata, M. and Mizuno, S. (2001). Absence of Z-chromosome inactivation for five genes in male chickens. *Chromosome Res* 9, 457-68.
- Kuroiwa, A., Yokomine, T., Sasaki, H., Tsudzuki, M., Tanaka, K., Namikawa, T. and Matsuda, Y. (2002). Biallelic expression of Z-linked genes in male chickens. *Cytogenet Genome Res* 99, 310-4.
- Kurukuti, S., Tiwari, V. K., Tavoosidana, G., Pugacheva, E., Murrell, A., Zhao, Z., Lobanenko, V., Reik, W. and Ohlsson, R. (2006). CTCF binding at the H19 imprinting control region mediates maternally inherited higher-order chromatin conformation to restrict enhancer access to Igf2. *Proc Natl Acad Sci U S A* 103, 10684-9.
- Lee, J. T. (2003). Molecular links between X-inactivation and autosomal imprinting: X-inactivation as a driving force for the evolution of imprinting? *Curr Biol* 13, R242-54.

- Lemaitre, J. M., Danis, E., Pasero, P., Vassetzky, Y. and Mechali, M. (2005). Mitotic remodeling of the replicon and chromosome structure. *Cell* 123, 787-801.
- Lengronne, A. and Schwob, E. (2002). The yeast CDK inhibitor Sic1 prevents genomic instability by promoting replication origin licensing in late G(1). *Mol Cell* 9, 1067-78.
- Lieberman-Aiden, E., van Berkum, N. L., Williams, L., Imakaev, M., Ragoczy, T., Telling, A., Amit, I., Lajoie, B. R., Sabo, P. J., Dorschner, M. O. et al. (2009). Comprehensive mapping of long-range interactions reveals folding principles of the human genome. *Science* 326, 289-93.
- Ling, J. Q. and Hoffman, A. R. (2007). Epigenetics of Long-Range Chromatin Interactions. *Pediatric Research* 61, 11R-16R 10.1203/pdr.0b013e31804575db.
- Ling, J. Q., Li, T., Hu, J. F., Vu, T. H., Chen, H. L., Qiu, X. W., Cherry, A. M. and Hoffman, A. R. (2006). CTCF mediates interchromosomal colocalization between Igf2/H19 and Wsb1/Nf1. *Science* 312, 269-72.
- Lobanenkov, V. V., Nicolas, R. H., Adler, V. V., Paterson, H., Klenova, E. M., Polotskaja, A. V. and Goodwin, G. H. (1990). A novel sequence-specific DNA binding protein which interacts with three regularly spaced direct repeats of the CCCTC-motif in the 5'-flanking sequence of the chicken c-myc gene. *Oncogene* 5, 1743-53.
- Lomvardas, S., Barnea, G., Pisapia, D. J., Mendelsohn, M., Kirkland, J. and Axel, R. (2006). Interchromosomal interactions and olfactory receptor choice. *Cell* 126, 403-13.
- Lyon, M. F. (1961). Gene action in the X-chromosome of the mouse (*Mus musculus* L.). *Nature* 190, 372-3.
- Malnic, B., Godfrey, P. A. and Buck, L. B. (2004). The human olfactory receptor gene family. *Proc Natl Acad Sci U S A* 101, 2584-9.
- Malnic, B., Hirono, J., Sato, T. and Buck, L. B. (1999). Combinatorial receptor codes for odors. *Cell* 96, 713-23.
- Mank, J. E. and Ellegren, H. (2009). All dosage compensation is local: gene-by-gene regulation of sex-biased expression on the chicken Z chromosome. *Heredity* 102, 312-320.
- Masai, H., Matsumoto, S., You, Z., Yoshizawa-Sugata, N. and Oda, M. (2010). Eukaryotic chromosome DNA replication: where, when, and how? *Annu Rev Biochem* 79, 89-130.
- McQueen, H. A., Siriaco, G. and Bird, A. P. (1998). Chicken microchromosomes are hyperacetylated, early replicating, and gene rich. *Genome Res* 8, 621-30.
- Misteli, T. (2001). Protein dynamics: implications for nuclear architecture and gene expression. *Science* 291, 843-7.
- Moore, T. and Haig, D. (1991). Genomic imprinting in mammalian development: a parental tug-of-war. *Trends in Genetics* 7, 45-49.
- Mostoslavsky, R., Singh, N., Tenzen, T., Goldmit, M., Gabay, C., Elizur, S., Qi, P., Reubinoff, B. E., Chess, A., Cedar, H. et al. (2001). Asynchronous replication and allelic exclusion in the immune system. *Nature* 414, 221-5.
- Murrell, A., Heeson, S. and Reik, W. (2004). Interaction between differentially methylated regions partitions the imprinted genes Igf2 and H19 into parent-specific chromatin loops. *Nat Genet* 36, 889-93.
- Nishida-Umehara, C., Fujiwara, A., Ogawa, A., Mizuno, S., Abe, S. and Yoshida, M. C. (1999). Differentiation of Z and W Chromosomes Revealed by Replication Banding

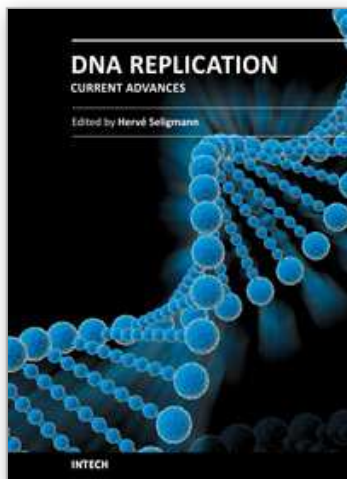
- and FISH Mapping of Sex-chromosome-linked DNA Markers in the Cassowary (Aves, Ratitae). *Chromosome Research* 7, 635-640.
- Ohlsson, R., Renkawitz, R. and Lobanenkov, V. (2001). CTCF is a uniquely versatile transcription regulator linked to epigenetics and disease. *Trends Genet* 17, 520-7.
- Ohno, M., Tenzen, T., Watanabe, Y., Yamagata, T., Kanaya, S. and Ikemura, T. (2000). Non-B DNA structures spatially and sequence-specifically associated with individual centromeres in the human interphase nucleus. In *Chromosomes Today*, vol. 13 (ed. E. Olmo and C. A. Redi), pp. 57-69. Berlin: Birkhauser.
- Ohno, S. (1967). Sex Chromosomes and sex-linked genes. Berlin: Springer-Verlag
- Ohno, S., Jainchill, J. and Stenius, C. (1963). The Creeping Vole (*Microtus Oregoni*) as a Gonosomal Mosaic. I. The Oy/Xy Constitution of the Male. *Cytogenetics* 14, 232-9.
- Orlando, V., Strutt, H. and Paro, R. (1997). Analysis of chromatin structure by in vivo formaldehyde cross-linking. *Methods* 11, 205-14.
- Osborne, C. S., Chakalova, L., Brown, K. E., Carter, D., Horton, A., Debrand, E., Goyenechea, B., Mitchell, J. A., Lopes, S., Reik, W. et al. (2004). Active genes dynamically colocalize to shared sites of ongoing transcription. *Nat Genet* 36, 1065-71.
- Paixao, S., Colaluca, I. N., Cubells, M., Peverali, F. A., Destro, A., Giadrossi, S., Giacca, M., Falaschi, A., Riva, S. and Biamonti, G. (2004). Modular structure of the human lamin B2 replicator. *Mol Cell Biol* 24, 2958-67.
- Pappas, D. L., Jr., Frisch, R. and Weinreich, M. (2004). The NAD(+)-dependent Sir2p histone deacetylase is a negative regulator of chromosomal DNA replication. *Genes Dev* 18, 769-81.
- Parelho, V., Hadjur, S., Spivakov, M., Leleu, M., Sauer, S., Gregson, H. C., Jarmuz, A., Canzonetta, C., Webster, Z., Nesterova, T. et al. (2008). Cohesins functionally associate with CTCF on mammalian chromosome arms. *Cell* 132, 422-33.
- Pasero, P., Bensimon, A. and Schwob, E. (2002). Single-molecule analysis reveals clustering and epigenetic regulation of replication origins at the yeast rDNA locus. *Genes Dev* 16, 2479-84.
- Phillips, J. E. and Corces, V. G. (2009). CTCF: master weaver of the genome. *Cell* 137, 1194-211.
- Raghuraman, M. K., Winzeler, E. A., Collingwood, D., Hunt, S., Wodicka, L., Conway, A., Lockhart, D. J., Davis, R. W., Brewer, B. J. and Fangman, W. L. (2001). Replication dynamics of the yeast genome. *Science* 294, 115-21.
- Renfree, M. B., Papenfuss, A. T., Shaw, G. and Pask, A. J. (2009). Eggs, embryos and the evolution of imprinting: insights from the platypus genome. *Reproduction, Fertility and Development* 21, 935-942.
- Rens, W., O'Brien, P. C., Grutzner, F., Clarke, O., Graphodatskaya, D., Tsend-Ayush, E., Trifonov, V. A., Skelton, H., Wallis, M. C., Johnston, S. et al. (2007). The multiple sex chromosomes of platypus and echidna are not completely identical and several share homology with the avian Z. *Genome Biol* 8, R243.
- Rothstein, R., Michel, B. and Gangloff, S. (2000). Replication fork pausing and recombination or "gimme a break". *Genes Dev* 14, 1-10.
- Rubio, E. D., Reiss, D. J., Welcsh, P. L., Disteche, C. M., Filippova, G. N., Baliga, N. S., Aebersold, R., Ranish, J. A. and Krumm, A. (2008). CTCF physically links cohesin to chromatin. *Proc Natl Acad Sci U S A* 105, 8309-14.

- Ryba, T., Hiratani, I., Lu, J., Itoh, M., Kulik, M., Zhang, J., Schulz, T. C., Robins, A. J., Dalton, S. and Gilbert, D. M. (2010). Evolutionarily conserved replication timing profiles predict long-range chromatin interactions and distinguish closely related cell types. *Genome Res* 20, 761-70.
- Sadoni, N., Langer, S., Fauth, C., Bernardi, G., Cremer, T., Turner, B. M. and Zink, D. (1999). Nuclear organization of mammalian genomes. Polar chromosome territories build up functionally distinct higher order compartments. *J Cell Biol* 146, 1211-26.
- Saha, S., Shan, Y., Mesner, L. D. and Hamlin, J. L. (2004). The promoter of the Chinese hamster ovary dihydrofolate reductase gene regulates the activity of the local origin and helps define its boundaries. *Genes Dev* 18, 397-410.
- Schaarschmidt, D., Baltin, J., Stehle, I. M., Lipps, H. J. and Knippers, R. (2004). An episomal mammalian replicon: sequence-independent binding of the origin recognition complex. *EMBO J* 23, 191-201.
- Schempp, W. and Schmid, M. (1981). Chromosome banding in Amphibia. VI. BrdU-replication patterns in anura and demonstration of XX/XY sex chromosomes in *Rana esculenta*. *Chromosoma* 83, 697-710.
- Schmid, M., Enderle, E., Schindler, D. and Schempp, W. (1989). Chromosome banding and DNA replication patterns in bird karyotypes. *Cytogenet Cell Genet* 52, 139-46.
- Schweizer, D., Loidl, J. and Hamilton, B. (1987). Heterochromatin and the phenomenon of chromosome banding. *Results Probl Cell Differ* 14, 235-54.
- Selig, S., Okumura, K., Ward, D. C. and Cedar, H. (1992). Delineation of DNA replication time zones by fluorescence in situ hybridization. *EMBO J* 11, 1217-25.
- Serizawa, S., Miyamichi, K., Nakatani, H., Suzuki, M., Saito, M., Yoshihara, Y. and Sakano, H. (2003). Negative feedback regulation ensures the one receptor-one olfactory neuron rule in mouse. *Science* 302, 2088-94.
- Shevchenko, A. I., Zakharova, I. S., Elisaphenko, E. A., Kolesnikov, N. N., Whitehead, S., Bird, C., Ross, M., Weidman, J. R., Jirtle, R. L., Karamysheva, T. V. et al. (2007). Genes flanking Xist in mouse and human are separated on the X chromosome in American marsupials. *Chromosome Res* 15, 127-36.
- Shreeram, S., Sparks, A., Lane, D. P. and Blow, J. J. (2002). Cell type-specific responses of human cells to inhibition of replication licensing. *Oncogene* 21, 6624-32.
- Simon, I., Tenzen, T., Reubinoff, B. E., Hillman, D., McCarrey, J. R. and Cedar, H. (1999). Asynchronous replication of imprinted genes is established in the gametes and maintained during development. *Nature* 401, 929-32.
- Simonis, M., Klous, P., Splinter, E., Moshkin, Y., Willemsen, R., de Wit, E., van Steensel, B. and de Laat, W. (2006). Nuclear organization of active and inactive chromatin domains uncovered by chromosome conformation capture-on-chip (4C). *Nat Genet* 38, 1348-54.
- Singh, N., Ebrahimi, F. A., Gimelbrant, A. A., Ensminger, A. W., Tackett, M. R., Qi, P., Gribnau, J. and Chess, A. (2003). Coordination of the random asynchronous replication of autosomal loci. *Nat Genet* 33, 339-41.
- Spiesser, T., Klipp, E. and Barberis, M. (2009). A model for the spatiotemporal organization of DNA replication in *Saccharomyces cerevisiae*. *Molecular Genetics and Genomics* 282, 25-35.
- State, M. W., Greally, J. M., Cuker, A., Bowers, P. N., Henegariu, O., Morgan, T. M., Gunel, M., DiLuna, M., King, R. A., Nelson, C. et al. (2003). Epigenetic abnormalities

- associated with a chromosome 18(q21-q22) inversion and a Gilles de la Tourette syndrome phenotype. *Proc Natl Acad Sci U S A* 100, 4684-9.
- Takagi, N. (1974). Differentiation of X chromosomes in early female mouse embryos. *Exp Cell Res* 86, 127-35.
- Takagi, N., Sugawara, O. and Sasaki, M. (1982). Regional and temporal changes in the pattern of X-chromosome replication during the early post-implantation development of the female mouse. *Chromosoma* 85, 275-86.
- Takahashi, M. (1987). A model for the spatio-temporal organization of DNA replication in mammalian cells. *J Theor Biol* 129, 91-115.
- Tanaka, S. and Diffley, J. F. (2002). Deregulated G1-cyclin expression induces genomic instability by preventing efficient pre-RC formation. *Genes Dev* 16, 2639-49.
- Taylor, J. H. (1977). Increase in DNA replication sites in cells held at the beginning of S phase. *Chromosoma* 62, 291-300.
- Veyrunes, F., Waters, P. D., Miethke, P., Rens, W., McMillan, D., Alsop, A. E., Grutzner, F., Deakin, J. E., Whittington, C. M., Schatzkamer, K. et al. (2008). Bird-like sex chromosomes of platypus imply recent origin of mammal sex chromosomes. *Genome Res* 18, 965-73.
- Wakefield, M. J., Keohane, A. M., Turner, B. M. and Graves, J. A. (1997). Histone underacetylation is an ancient component of mammalian X chromosome inactivation. *Proc Natl Acad Sci U S A* 94, 9665-8.
- Wang, L., Lin, C. M., Brooks, S., Cimbor, D., Groudine, M. and Aladjem, M. I. (2004). The human beta-globin replication initiation region consists of two modular independent replicators. *Mol Cell Biol* 24, 3373-86.
- Watanabe, Y., Abe, T., Ikemura, T. and Maekawa, M. (2009). Relationships between replication timing and GC content of cancer-related genes on human chromosomes 11q and 21q. *Gene* 433, 26-31.
- Watanabe, Y., Fujiyama, A., Ichiba, Y., Hattori, M., Yada, T., Sakaki, Y. and Ikemura, T. (2002). Chromosome-wide assessment of replication timing for human chromosomes 11q and 21q: disease-related genes in timing-switch regions. *Hum Mol Genet* 11, 13-21.
- Watanabe, Y., Ikemura, T. and Sugimura, H. (2004). Amplicons on human chromosome 11q are located in the early/late-switch regions of replication timing. *Genomics* 84, 796-805.
- Watanabe, Y. and Maekawa, M. (2010). Spatiotemporal regulation of DNA replication in the human genome and its association with genomic instability and disease. *Curr Med Chem* 17, 222-33.
- Watanabe, Y., Shibata, K., Sugimura, H. and Maekawa, M. (2007). p53-Dependent change in replication timing of the human genome. *Biochemical and Biophysical Research Communications* 364, 289-293.
- Weidman, J. R., Murphy, S. K., Nolan, C. M., Dietrich, F. S. and Jirtle, R. L. (2004). Phylogenetic footprint analysis of IGF2 in extant mammals. *Genome Res* 14, 1726-32.
- Wilson, N. D., Ross, L. J., Close, J., Mott, R., Crow, T. J. and Volpi, E. V. (2007). Replication profile of PCDH11X and PCDH11Y, a gene pair located in the non-pseudoautosomal homologous region Xq21.3/Yp11.2. *Chromosome Res* 15, 485-98.

- Woodward, A. M., Gohler, T., Luciani, M. G., Oehlmann, M., Ge, X., Gartner, A., Jackson, D. A. and Blow, J. J. (2006). Excess Mcm2-7 license dormant origins of replication that can be used under conditions of replicative stress. *J Cell Biol* 173, 673-83.
- Wrigley, J. M. and Graves, J. A. (1988). Sex chromosome homology and incomplete, tissue-specific X-inactivation suggest that monotremes represent an intermediate stage of mammalian sex chromosome evolution. *J Hered* 79, 115-8.
- Wutz, A. and Jaenisch, R. (2000). A shift from reversible to irreversible X inactivation is triggered during ES cell differentiation. *Mol Cell* 5, 695-705.
- Yusufzai, T. M., Tagami, H., Nakatani, Y. and Felsenfeld, G. (2004). CTCF Tethers an Insulator to Subnuclear Sites, Suggesting Shared Insulator Mechanisms across Species. *Molecular Cell* 13, 291-298.
- Zakharova, I. S., Shevchenko, A. I. and Zakian, S. M. (2009). Monoallelic gene expression in mammals. *Chromosoma* 118, 279-90.
- Zhao, Z., Tavoosidana, G., Sjolinder, M., Gondor, A., Mariano, P., Wang, S., Kanduri, C., Lezcano, M., Sandhu, K. S., Singh, U. et al. (2006). Circular chromosome conformation capture (4C) uncovers extensive networks of epigenetically regulated intra- and interchromosomal interactions. *Nat Genet* 38, 1341-7.
- Zink, D., Bornfleth, H., Visser, A., Cremer, C. and Cremer, T. (1999). Organization of early and late replicating DNA in human chromosome territories. *Exp Cell Res* 247, 176-88.

IntechOpen



DNA Replication-Current Advances

Edited by Dr Herve Seligmann

ISBN 978-953-307-593-8

Hard cover, 694 pages

Publisher InTech

Published online 01, August, 2011

Published in print edition August, 2011

The study of DNA advanced human knowledge in a way comparable to the major theories in physics, surpassed only by discoveries such as fire or the number zero. However, it also created conceptual shortcuts, beliefs and misunderstandings that obscure the natural phenomena, hindering its better understanding. The deep conviction that no human knowledge is perfect, but only perfectible, should function as a fair safeguard against scientific dogmatism and enable open discussion. With this aim, this book will offer to its readers 30 chapters on current trends in the field of DNA replication. As several contributions in this book show, the study of DNA will continue for a while to be a leading front of scientific activities.

How to reference

In order to correctly reference this scholarly work, feel free to copy and paste the following:

Megan Lynne Wright and Frank Grützner (2011). Replication Timing: Evolution, Nuclear Organization and Relevance for Human Disease, DNA Replication-Current Advances, Dr Herve Seligmann (Ed.), ISBN: 978-953-307-593-8, InTech, Available from: <http://www.intechopen.com/books/dna-replication-current-advances/replication-timing-evolution-nuclear-organization-and-relevance-for-human-disease>

INTECH
open science | open minds

InTech Europe

University Campus STeP Ri
Slavka Krautzeka 83/A
51000 Rijeka, Croatia
Phone: +385 (51) 770 447
Fax: +385 (51) 686 166
www.intechopen.com

InTech China

Unit 405, Office Block, Hotel Equatorial Shanghai
No.65, Yan An Road (West), Shanghai, 200040, China
中国上海市延安西路65号上海国际贵都大饭店办公楼405单元
Phone: +86-21-62489820
Fax: +86-21-62489821

© 2011 The Author(s). Licensee IntechOpen. This chapter is distributed under the terms of the [Creative Commons Attribution-NonCommercial-ShareAlike-3.0 License](https://creativecommons.org/licenses/by-nc-sa/3.0/), which permits use, distribution and reproduction for non-commercial purposes, provided the original is properly cited and derivative works building on this content are distributed under the same license.

IntechOpen

IntechOpen