

# We are IntechOpen, the world's leading publisher of Open Access books Built by scientists, for scientists

6,900

Open access books available

186,000

International authors and editors

200M

Downloads

Our authors are among the

154

Countries delivered to

TOP 1%

most cited scientists

12.2%

Contributors from top 500 universities



WEB OF SCIENCE™

Selection of our books indexed in the Book Citation Index  
in Web of Science™ Core Collection (BKCI)

Interested in publishing with us?  
Contact [book.department@intechopen.com](mailto:book.department@intechopen.com)

Numbers displayed above are based on latest data collected.  
For more information visit [www.intechopen.com](http://www.intechopen.com)





# Survey of Multispectral Image Fusion Techniques in Remote Sensing Applications

Dong Jiang, Dafang Zhuang, Yaohuan Huang and Jinying Fu  
*Data Center for Resources and Environmental Sciences,  
 State Key Lab of Resources and Environmental Information System,  
 Institute of Geographical Sciences and Natural Resources Research,  
 Chinese Academy of Sciences, Beijing,  
 China*

## 1. Introduction

### 1.1 Definition of image fusion

With the development of multiple types of biosensors, chemical sensors, and remote sensors on board satellites, more and more data have become available for scientific researches. As the volume of data grows, so does the need to combine data gathered from different sources to extract the most useful information. Different terms such as data interpretation, combined analysis, data integrating have been used. Since early 1990's, "Data fusion" has been adopted and widely used. The definition of data fusion/image fusion varies. For example:

- *Data fusion is a process dealing with data and information from multiple sources to achieve refined/improved information for decision making (Hall 1992)[1].*
- *Image fusion is the combination of two or more different images to form a new image by using a certain algorithm (Genderen and Pohl 1994 ) [2].*
- *Image fusion is the process of combining information from two or more images of a scene into a single composite image that is more informative and is more suitable for visual perception or computer processing. (Guest editorial of Information Fusion, 2007)[3].*
- *Image fusion is a process of combining images, obtained by sensors of different wavelengths simultaneously viewing of the same scene, to form a composite image. The composite image is formed to improve image content and to make it easier for the user to detect, recognize, and identify targets and increase his situational awareness. 2010.*  
 (<http://www.hcltech.com/aerospace-and-defense/enhanced-vision-system/>).

Generally speaking, in data fusion the information of a specific scene acquired by two or more sensors at the same time or separate times is combined to generate an interpretation of the scene not obtainable from a single sensor [4]. Image fusion is a component of data fusion when data type is strict to image format (Figure 1). Image fusion is an effective way for optimum utilization of large volumes of image from multiple sources. Multiple image fusion seeks to combine information from multiple sources to achieve inferences that are not feasible from a single sensor or source. It is the aim of image fusion to integrate different data in order to obtain more information than can be derived from each of the single sensor data alone ( $1+1=3$ ')[4].



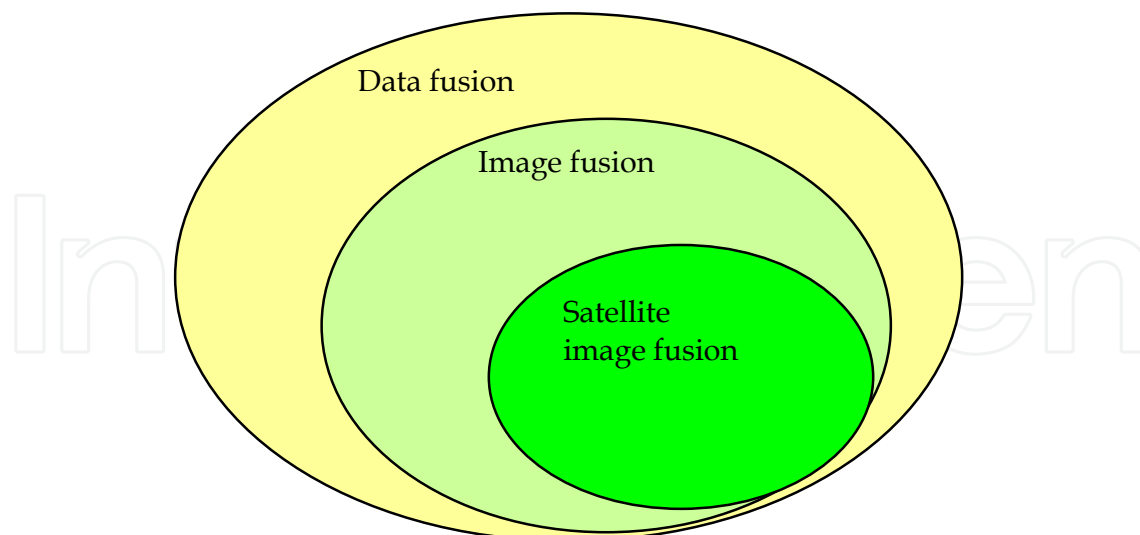


Fig. 1. Illustration of relationship of data fusion and image fusion

The literature on data fusion in computer vision, machine intelligence and medical imaging is substantial, but will not be discussed here. This chapter focused on multi-sensor data fusion in satellite remote sensing area. The fusion of information from sensors with different physical characteristics enhances the understanding of our surroundings and provides the basis for planning, decision-making, and control of autonomous and intelligent machines [1].

### 1.2 Advance of image fusion

In the past decades it has been applied to different fields such as pattern recognition, visual enhancement, object detection and area surveillance [4]. In 1997, Hall and Llinas gave a general introduction to multi-sensor data fusion [1]. Another in-depth review paper on multiple sensors data fusion techniques was published in 1998 [4]. This paper explained the concepts, methods and applications of image fusion as a contribution to multi-sensor integration oriented data processing. Since then, image fusion has received increasing attention. Further scientific papers on image fusion have been published with an emphasis on improving fusion quality and finding more application areas. As a case in point, Simone *et al.* describe three typical applications of data fusion in remote sensing, such as obtaining elevation maps from synthetic aperture radar (SAR) interferometers, the fusion of multi-sensor and multi-temporal images, and the fusion of multi-frequency, multi-polarization and multi-resolution SAR images [5]. Vijayaraj provided the concepts of image fusion in remote sensing applications [6]. Quite a few survey papers have been published recently, providing overviews of the history, developments, and the current state of the art of image fusion in the image-based application fields [7-9], but recent development of multi-sensor data fusion in remote sensing fields has not been discussed in detail. The objectives of this paper are to present an overview of new advances in multi-sensor satellite image fusion, focused on its main application fields in remote sensing.



Data source	Objective	Authors	Time
SPOT HRV & ERS SAR	Automatic registration	Olivier Thepaut, Kidiyo Kpalma, Joseph Ronsin [10]	1994
Hyperspectral image & SAR image	Automatic target cueing	Tamar Peli, Mon Young, Robert Knox, Ken Ellis, Fredrick Bennet[11]	1999
Multifrequency, multipolarization SAR images	Land use classification	G. Simone, A. Farina, F.C. Morabito, S.B. Serpico, L. Bruzzone[5]	2001
Landsat ETM+ Pan band & CBERS-1 multiple spectral data	Methods comparison	Marcia L.S. Aguen, Nelson D.A. Mascarenhas[12]	2006
Landsat ETM+ & MODIS	Urban sprawl monitoring	Ying Lei, Dong Jiang, and Xiaohuan Yang[13]	2007
AVIRIS and LIDAR	Coastal mapping	Ahmed F. Elaksher[14]	2008

Table 1. Examples of application of image fusion

1.3 Categorization of image fusion techniques

Image fusion can be performed roughly at four different stages: signal level, pixel level, feature level, and decision level. Figure 2 illustrates of the concept of the four different fusion levels [15].

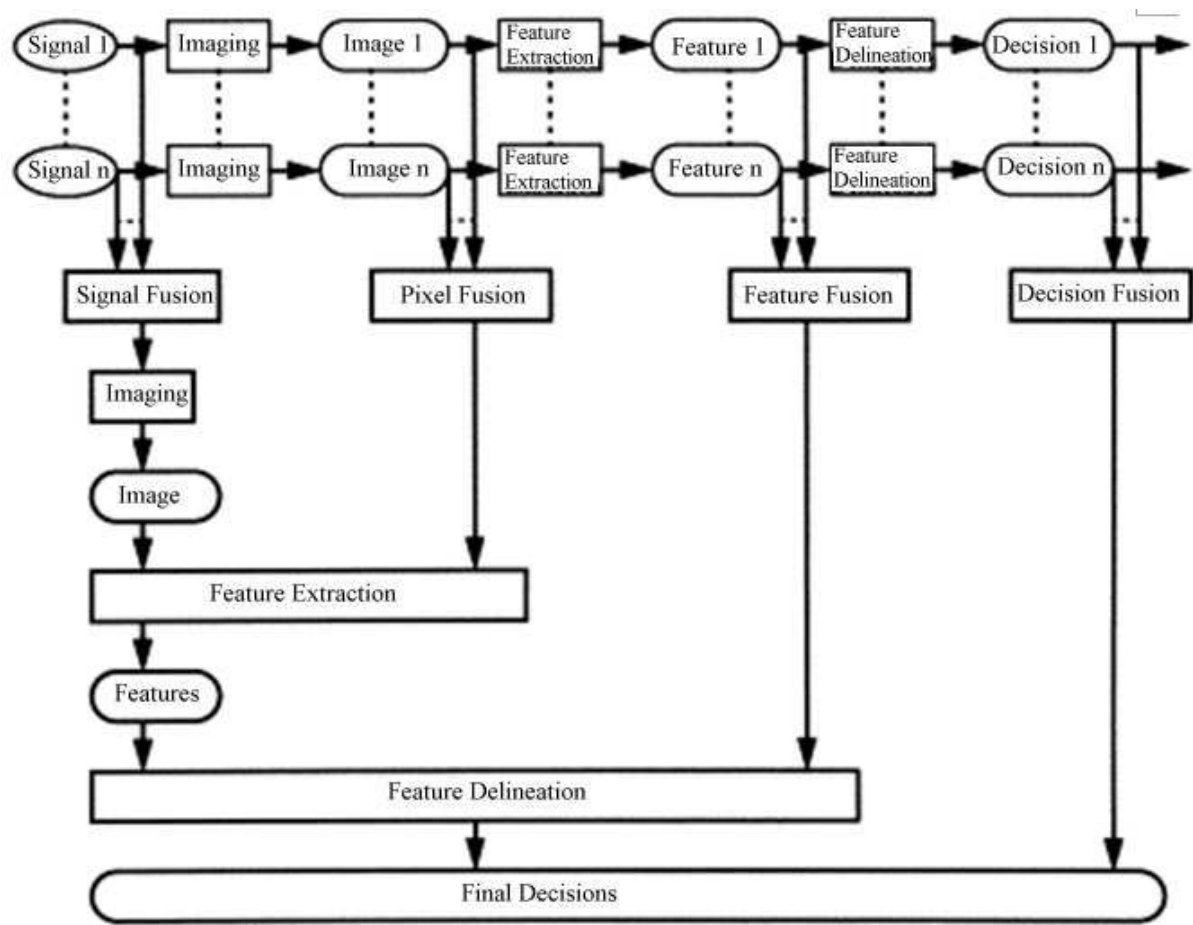


Fig. 2. An overview of categorization of the fusion algorithms [15].



1. Signal level fusion. In signal-based fusion, signals from different sensors are combined to create a new signal with a better signal-to noise ratio than the original signals.
2. Pixel level fusion. Pixel-based fusion is performed on a pixel-by-pixel basis. It generates a fused image in which information associated with each pixel is determined from a set of pixels in source images to improve the performance of image processing tasks such as segmentation
3. Feature level fusion. Feature-based fusion at feature level requires an extraction of objects recognized in the various data sources. It requires the extraction of salient features which are depending on their environment such as pixel intensities, edges or textures. These similar features from input images are fused.
4. Decision-level fusion consists of merging information at a higher level of abstraction, combines the results from multiple algorithms to yield a final fused decision. Input images are processed individually for information extraction. The obtained information is then combined applying decision rules to reinforce common interpretation.

## 2. Advance in image fusion techniques

During the past two decades, several fusion techniques have been proposed. Most of these techniques are based on the compromise between the desired spatial enhancement and the spectral consistency. Among the hundreds of variations of image fusion techniques, the widely used methods include, but are not limited to, intensity-hue-saturation (IHS), high-pass filtering, principal component analysis (PCA), different arithmetic combination (e.g. Brovey transform), multi-resolution analysis-based methods (e.g. pyramid algorithm, wavelet transform), and Artificial Neural Networks (ANNs), etc. The chapter will provide a general introduction to those selected methods with emphases on new advances in the remote sensing field.

### 2.1 Traditional fusion algorithms

The PCA transform converts inter-correlated multi-spectral (MS) bands into a new set of uncorrelated components. To do this approach first we must get the principle components of the MS image bands. After that, the first principle component which contains the most information of the image is substituted by the panchromatic image. Finally the inverse principal component transform is done to get the new RGB (Red, Green, and Blue) bands of multi-spectral image from the principle components.

The intensity-hue-saturation (HIS) fusion converts a color MS image from the RGB space into the IHS color space. The HIS components can be defined as follows:

$$I = (R + G + B) / 3 \quad (1)$$

$$H = (B - R) / 3(I - R), S = 1 - R / I, \text{ when } R = \text{Minimum}(R, G, B) \quad (2)$$

$$H = (R - G) / 3(I - G), S = 1 - G / I, \text{ when } G = \text{Minimum}(R, G, B) \quad (3)$$

$$H = (G - B) / 3(I - B), S = 1 - B / I, \text{ when } B = \text{Minimum}(R, G, B) \quad (4)$$

Where I, H, S stand for intensity, hue and saturation components respectively; R, G, B mean Red, Green, and Blue bands of multi-spectral image.

Because the intensity (I) band resembles a panchromatic (PAN) image, it is replaced by a high-resolution PAN image in the fusion. A reverse IHS transform is then performed on



the PAN together with the hue (H) and saturation (S) bands, resulting in an IHS fused image.

Different arithmetic combinations have been developed for image fusion. The Brovey transform, Synthetic Variable Ratio (SVR), and Ratio Enhancement (RE) techniques are some successful examples [9]. The basic procedure of the Brovey transform first multiplies each MS band by the high resolution PAN band, and then divides each product by the sum of the MS bands. The algorithm is shown in equation (5) .

$$DN_{fused} = DN_{pan} \times DN_{b1} / (DN_{b1} + DN_{b2} + DN_{b3}) \quad (5)$$

Where  $DN_{fused}$  means the digital number(DN) of the resulting fused image;  $DN_{b1}$ ,  $DN_{b2}$  and  $DN_{b3}$  stand for pixel values of three bands of multiple spectral image;  $DN_{pan}$  stand for pixel values of high resolution Pan band.

The SVR and RE techniques are similar, but involve more sophisticated calculations for the MS sum for better fusion quality. For example (Fig.3 ), Spot 5 Pan band data with spatial resolution of 2.5m of Yanqing city, Beijing China, in 2005 was fused with multiple spectral bands of Landsat TM data (spatial resolution:30m) in 2007. A simple Brovey transformation fusion method was used and the 3rd, 4th, 7th bands of TM were selected for calculation. The building areas remained unchanged from 2005-2007 were grey-purple, meanwhile, the newly established buildings were highlighted (lime color in Figure 3) in the composed image and could be easily detected.

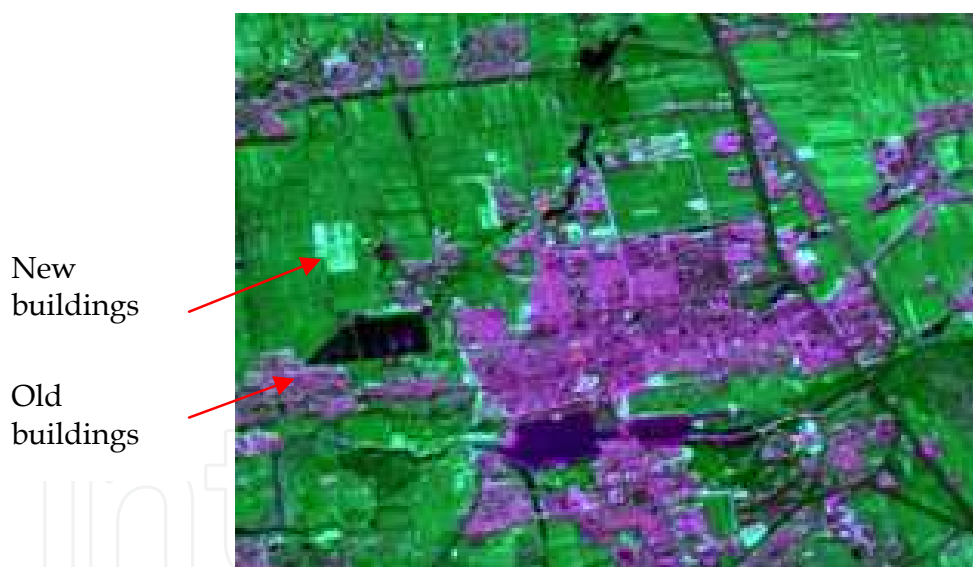


Fig. 3. An example of Brovey transform based image fusion

Traditional fusion algorithms mentioned above have been widely used for relatively simple and time efficient fusion schemes. However, several problems must be considered before their application: (1) These fusion algorithms generate a fused image from a set of pixels in the various sources. These pixel-level fusion methods are very sensitive to registration accuracy, so that co-registration of input images at sub-pixel level is required; (2) One of the main limitations of HIS and Brovey transform is that the number of input multiple spectral bands should be equal or less than three at a time; (3) These image fusion methods are often successful at improves the spatial resolution, however, they tend to distort the original spectral signatures to some extent [16,17]. More recently new techniques such as the wavelet



transform seem to reduce the color distortion problem and to keep the statistical parameters invariable.

## 2.2 Multi-resolution analysis-based methods

Multi-resolution or multi-scale methods, such as pyramid transformation, have been adopted for data fusion since the early 1980s [18]. The Pyramid-based image fusion methods, including Laplacian pyramid transform, were all developed from Gaussian pyramid transform, have been modified and widely used [19,20].

In 1989, Mallat put all the methods of wavelet construction into the framework of functional analysis and described the fast wavelet transform algorithm and general method of constructing wavelet orthonormal basis. On the basis, wavelet transform can be really applied to image decomposition and reconstruction [21-23]. Wavelet transforms provide a framework in which an image is decomposed, with each level corresponding to a coarser resolution band. For example, in the case of fusing a MS image with a high-resolution PAN image with wavelet fusion, the Pan image is first decomposed into a set of low-resolution Pan images with corresponding wavelet coefficients (spatial details) for each level. Individual bands of the MS image then replace the low-resolution Pan at the resolution level of the original MS image. The high resolution spatial detail is injected into each MS band by performing a reverse wavelet transform on each MS band together with the corresponding wavelet coefficients (Figure 4).

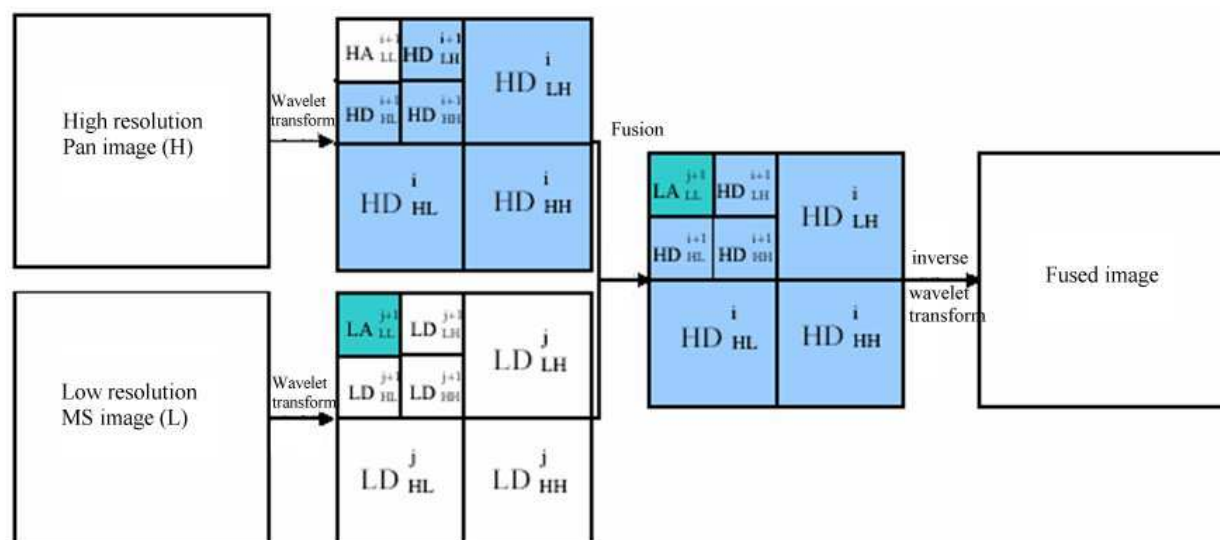


Fig. 4. Generic flowchart of wavelet-based image fusion

In the wavelet-based fusion schemes, detail information is extracted from the PAN image using wavelet transforms and injected into the MS image. Distortion of the spectral information is minimized compared to the standard methods [24]. For example, CBERS multiple spectral image (Figure 5, a) with spatial resolution of 19.2 m of Yiwu City, Zhejiang Province, China, in 2007 was fused with CBERS-HR PAN image (Figure 5, b) with spatial resolution of 2.4 m. Buildings and linear objects (roads, etc.) could be easily identified from fused images (c).



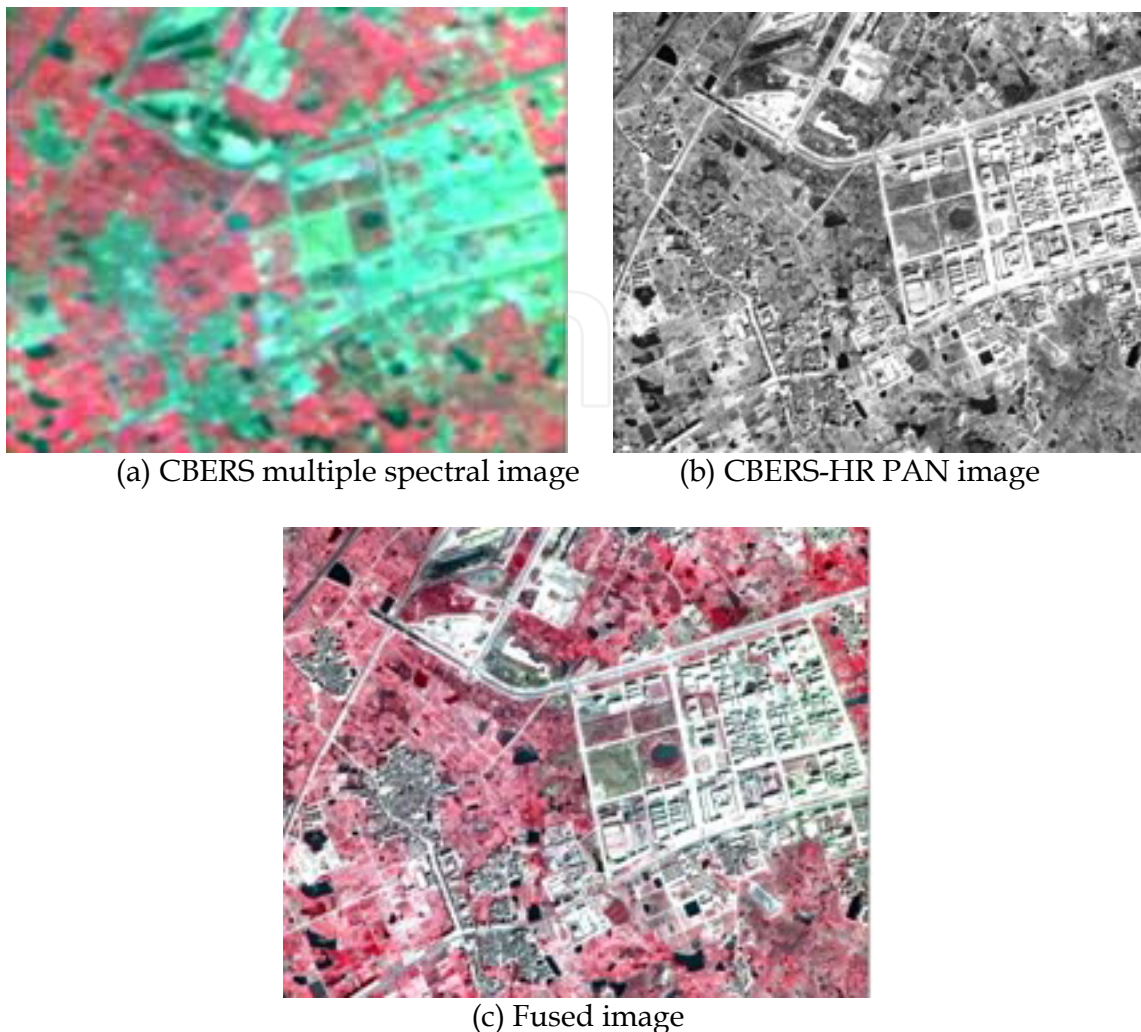


Fig. 5. Example of wavelet-based image fusion

In order to achieve optimum fusion results, various wavelet-based fusion schemes had been tested by many researchers. Among these schemes several new concepts/algorithms were presented and discussed. Candes provided a method for fusing SAR and visible MS images using the Curvelet transformation. The method was proven to be more efficient for detecting edge information and denoising than wavelet transformation [25]. Curvelet-based image fusion has been used to merge a Landsat ETM+ panchromatic and multiple-spectral image. The proposed method simultaneously provides richer information in the spatial and spectral domains [26]. Donoho *et al.* presented a flexible multi-resolution, local, and directional image expansion using contour segments, the Contourlet transform, to solve the problem that wavelet transform could not efficiently represent the singularity of linear/curve in image processing [27,28]. Contourlet transform provides flexible number of directions and captures the intrinsic geometrical structure of images.

In general, as a typical feature level fusion method, wavelet-based fusion could evidently perform better than convenient methods in terms of minimizing color distortion and denoising effects. It has been one of the most popular fusion methods in remote sensing in recent years, and has been standard module in many commercial image processing soft wares, such as ENVI, PCI, ERDAS. Problems and limitations associated with them include: (1) Its computational complexity compared to the standard methods; (2) Spectral content of



small objects often lost in the fused images; (3) It often requires the user to determine appropriate values for certain parameters (such as thresholds). The development of more sophisticated wavelet-based fusion algorithm (such as Ridgelet, Curvelet, and Contourlet transformation) could improve the performance results, but these new schemes may cause greater complexity in the computation and setting of parameters.

### 2.3 Artificial neural network based fusion method

Artificial neural networks (ANNs) have proven to be a more powerful and self-adaptive method of pattern recognition as compared to traditional linear and simple nonlinear analyses [29,30]. The ANN-based method employs a nonlinear response function that iterates many times in a special network structure in order to learn the complex functional relationship between input and output training data. The general schematic diagram of the ANN-based image fusion method can be seen in Figure 6.

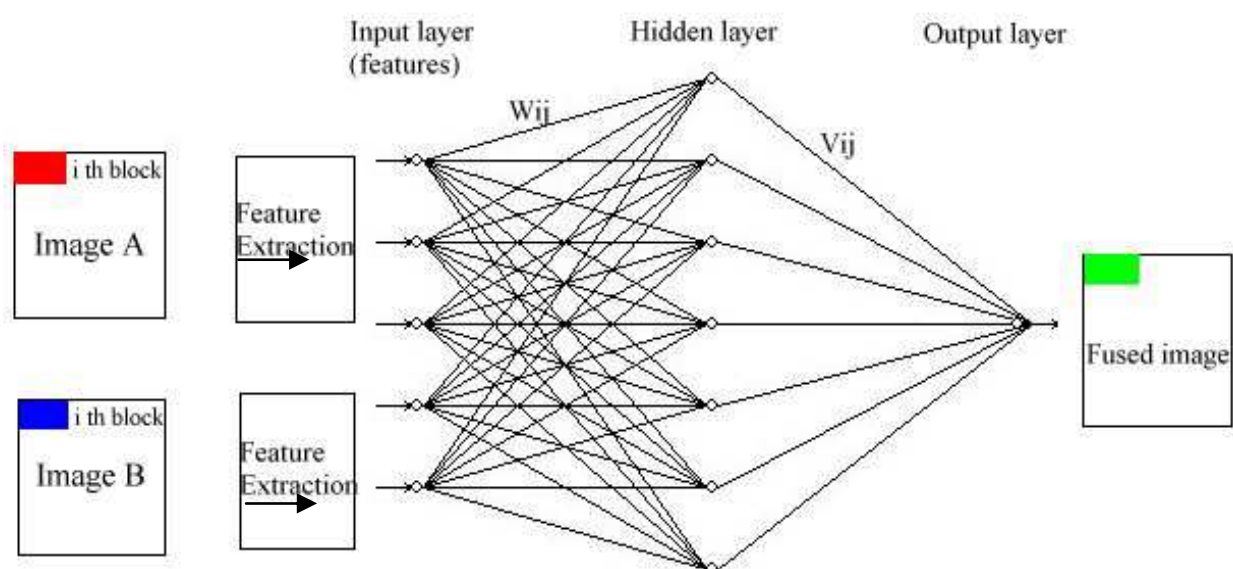


Fig. 6. General schematic diagram of the ANN-based image fusion method.

The input layer has several neurons, which represent the feature factors extracted and normalized from image A and image B. The function of each neuron is a sigmoid function given by:

$$f(x) = \frac{1}{1 + e^{-x}} \quad (6)$$

In Figure 6, the hidden layer has several neurons and the output layer has one neuron (or more neuron). The  $i$ th neuron of the input layer connects with the  $j$ th neuron of the hidden layer by weight  $W_{ij}$ , and weight between the  $j$ th neuron of the hidden layer and the  $t$ th neuron of output layer is  $V_{jt}$  (in this case  $t = 1$ ). The weighting function is used to simulate and recognize the response relationship between features of fused image and corresponding feature from original images (image A and image B). The ANN model is given as follows:



$$Y = \frac{1}{1 + \exp \left[ - \left( \sum_{j=1}^q V_j H_j - \gamma \right) \right]} \quad (7)$$

In equation (7),  $Y$ =pixel value of fused image exported from the neural network model,  $q$  = number of nodes hidden ( $q \sim 8$  here),  $V_j$ =weight between  $j$ th hidden node and output node (in this case, there is only one output node),  $\gamma$ =threshold of the output node,  $H_j$ =exported values from the  $j$ th hidden node:

$$H_j = \frac{1}{1 + \exp \left[ - \left( \sum_{i=1}^n W_{ij} a_i - \theta_j \right) \right]} \quad (8)$$

Where  $W_{ij}$ =weight between  $i$ th input node and the  $j$ th hidden node,  $a_i$ =values of the  $i$ th input factor,  $n$ =number of nodes of input ( $n \sim 5$  here),  $\theta_j$ =threshold of the  $j$ th hidden node.

As the first step of ANN-based data fusion, two registered images are decomposed into several blocks with size of  $M$  and  $N$  (Figure 6). Then, features of the corresponding blocks in the two original images are extracted, and the normalized feature vector incident to neural networks can be constructed [31]. The features used here to evaluate the fusion effect are normally spatial frequency, visibility, and edge. The next step is to select some vector samples to train neural networks. An ANN is a universal function approximator that directly adapts to any nonlinear function defined by a representative set of training data. Once trained, the ANN model can remember a functional relationship and be used for further calculations. For these reasons, the ANN concept has been adopted to develop strongly nonlinear models for multiple sensors data fusion. Thomas *et al.* discussed the optimal fusion method of TV and infrared images using artificial neural networks [32]. After that, many neural network models have been proposed for image fusion such as BP, SOFM, and ARTMAP neural networks. BP algorithm has been mostly used. However, the convergence of BP networks is slow and the global minima of the error space may not be always achieved [33]. As an unsupervised network, SOFM network clusters input sample through competitive learning. But the number of output neurons should be set before constructing neural networks model [34]. RBF neural network can approximate objective function at any precise level if enough hidden units are provided. The advantages of RBF network training include no iteration, few training parameters, high training speed, simply process and memory functions [35]. Hong explored the way that using RBF neural networks combined with nearest neighbor clustering method to cluster, and membership weighting is used to fuse. Experiments show this method can obtain the better effect of cluster fusion with proper width parameter [36].

Gail *et al.* used Adaptive Resonance Theory (ART) neural networks to form a new framework for self-organizing information fusion. The ARTMAP neural network can act as a self-organizing expert system to derive hierarchical knowledge structures from inconsistent training data [37]. ARTMAP information fusion resolves apparent contradictions in input pixel labels by assigning output classes to levels in a knowledge hierarchy [38]. Rong *et al.* presented a feature-level image fusion method based on segmentation region and neural networks. The results indicated that this combined fusion scheme was more efficient than that of traditional methods [39].

The ANN-based fusion method exploits the pattern recognition capabilities of artificial neural networks, and meanwhile, the learning capability of neural networks makes it



feasible to customize the image fusion process. Many of applications indicated that the ANN-based fusion methods had more advantages than traditional statistical methods, especially when input multiple sensor data were incomplete or with much noises. It is often served as an efficient decision level fusion tools for its self learning characters, especially in land use/land cover classification. In addition, the multiple inputs – multiple outputs framework make it to be a possible approach to fuse high dimension data, such as long-term time-series data or hyper-spectral data.

#### **2.4 Dempster-Shafer evidence theory based fusion method**

Dempster-Shafer decision theory is considered a generalized Bayesian theory, used when the data contributing to the determination of the analysis of the images is subject to uncertainty. It allows distributing support for proposition not only to a proposition itself but also to the union of propositions that include it. Huadong Wu et.al. presented a system framework that manages information overlap and resolves conflicts, and the system provides eneralizable architectural support that facilitates sensor fusion [40].

Compared with Bayesian theory, the Dempster-Shafer theory of evidence feels closer to our human perception and reasoning processes. Its capability to assign uncertainty or ignorance to propositions is a powerful tool for dealing with a large range of problems that otherwise would seem intractable [40]. The Dempster-Shafer theory of evidence has been applied on image fusion using SPOT/HRV image and NOAA/AVHRR series. The results show unambiguously the major improvement brought by such a data fusion, and the performance of the proposed method [41]. H. Borotschnig et.al. compared three frameworks for information fusion and view-planning using different uncertainty calculi: probability theory, possibility theory and Dempster-Shafer theory of evidence[42]. The results indicated that Dempster-Shafer decision theory based sensor fusion method will achieve much higher performance improvement, and it provides estimates of imprecision and uncertainty of the information derived from different sources

#### **2.5 Multiple algorithm fusion**

As a coin has two sides, each fusion method has its own set of advantages and limitations. The combination of several different fusion schemes has been approved to be the useful strategy which may achieve better quality of results [16,24]. As a case in point, quite a few researchers have focused on incorporating the traditional IHS method into wavelet transforms, since the IHS fusion method performs well spatially while the wavelet methods perform well spectrally [24,41]. However, selection and arrangement of those candidate fusion schemes are quite arbitrary and often depends upon the user's experience. Optimal combining strategy for different fusion algorithms, in another word, 'algorithm fusion' strategy, is thus urgent needed. Further investigations are necessary for the following aspects: 1)Design of a general framework for combination of different fusion approaches; 2) Development of new approaches which can combine aspects of pixel/feature/decision level image fusion; 3)Establishment of automatic quality assessment method for evaluation of fusion results.

### **3. Applications of image fusion**

Remote sensing techniques have proven to be powerful tools for the monitoring of the Earth's surface and atmosphere on a global, regional, and even local scale, by providing important coverage, mapping and classification of land cover features such as vegetation,



soil, water and forests [5] The volume of remote sensing images continues to grow at an enormous rate due to advances in sensor technology for both high spatial and temporal resolution systems. Consequently, an increasing quantity of image data from airborne/satellite sensors have been available, including multi-resolution images, multi-temporal images, multi-frequency/spectral bands images and multi-polarization image. The goal of multiple sensor data fusion is to integrate complementary and redundant information to provide a composite image which could be used to better understanding of the entire scene. It has been widely used in many fields of remote sensing, such as object identification, classification, and change detection. The following paragraphs describe the recent achievements of image fusion in more detail.

### 3.1 Object identification

The feature enhancement capability of image fusion is visually apparent in VIR/VIR combinations that often results in images that are superior to the original data. In order to maximize the amount of information extracted from satellite image data useful products can be found in fused images [4]. A Dempster-Shafer fusion method for urban building detection was presented in 2004. First and last pulse of LIDAR data and multi-spectral aerial imagery were used. Apart from buildings, the classes 'tree', 'grass land', and 'bare soil' are also distinguished by a classification method based on the Dempster-Shafer theory of data fusion. Identification of linear objects such as roads could also benefit from image fusion techniques. An integrated system for automatic road mapping from high-resolution multi-spectral satellite imagery by information fusion was discussed by Xiaoying *et al.* in 2005 [43]. Andrea presents a solution to enhance the spatial resolution of MS images with high-resolution PAN data. The proposed method exploits the undecimated discrete wavelet transform, and the vector multi-scale Kalman filter, which is used to model the injection process of wavelet details. Fusion simulations on spatially degraded data and fusion tests at

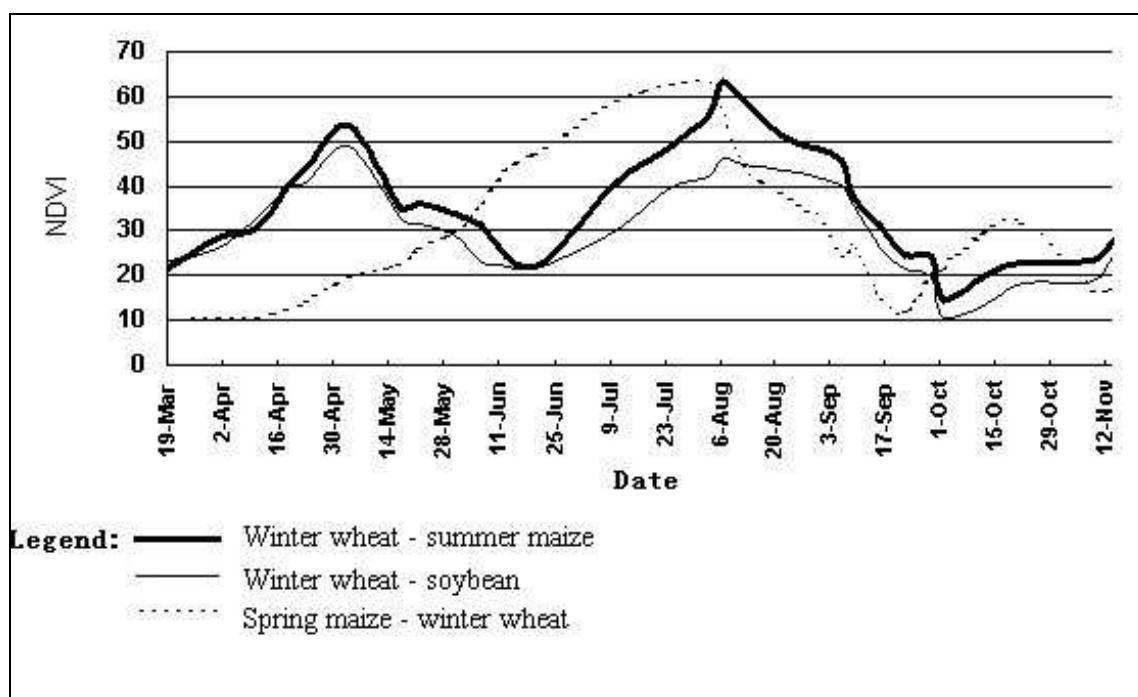


Fig. 7. NDVI profile for different crop types.



the full scale reveal that an accurate and reliable PAN-sharpening is achieved by the proposed method [44]. A case study, which extract crop field using high spatial resolution image and images with high time repetitiveness, was shown as follows.

Identification of crop types from satellite imagery is a challenging task. Here we present an automatic approach for planting areas extracting in mixed planting regions around Beijing city using MODIS data and Landsat TM data. Firstly, planting areas were distinguished with non-crop areas from Landsat TM image using traditional supervised classifier. Then, time series NDVI derived from MODIS data were used for indentifying different types of crops. Because different crop has different growth stage, maximum or minimum value of crop's NDVI is not same and it appears in different date.

After investigating the planting structure of main crops and analyzing the NDVI value of different crop from the middle of March to the middle of November 2002 in Beijing, planting area of winter wheat, spring maize, summer maize and bean in Beijing has been extracted.

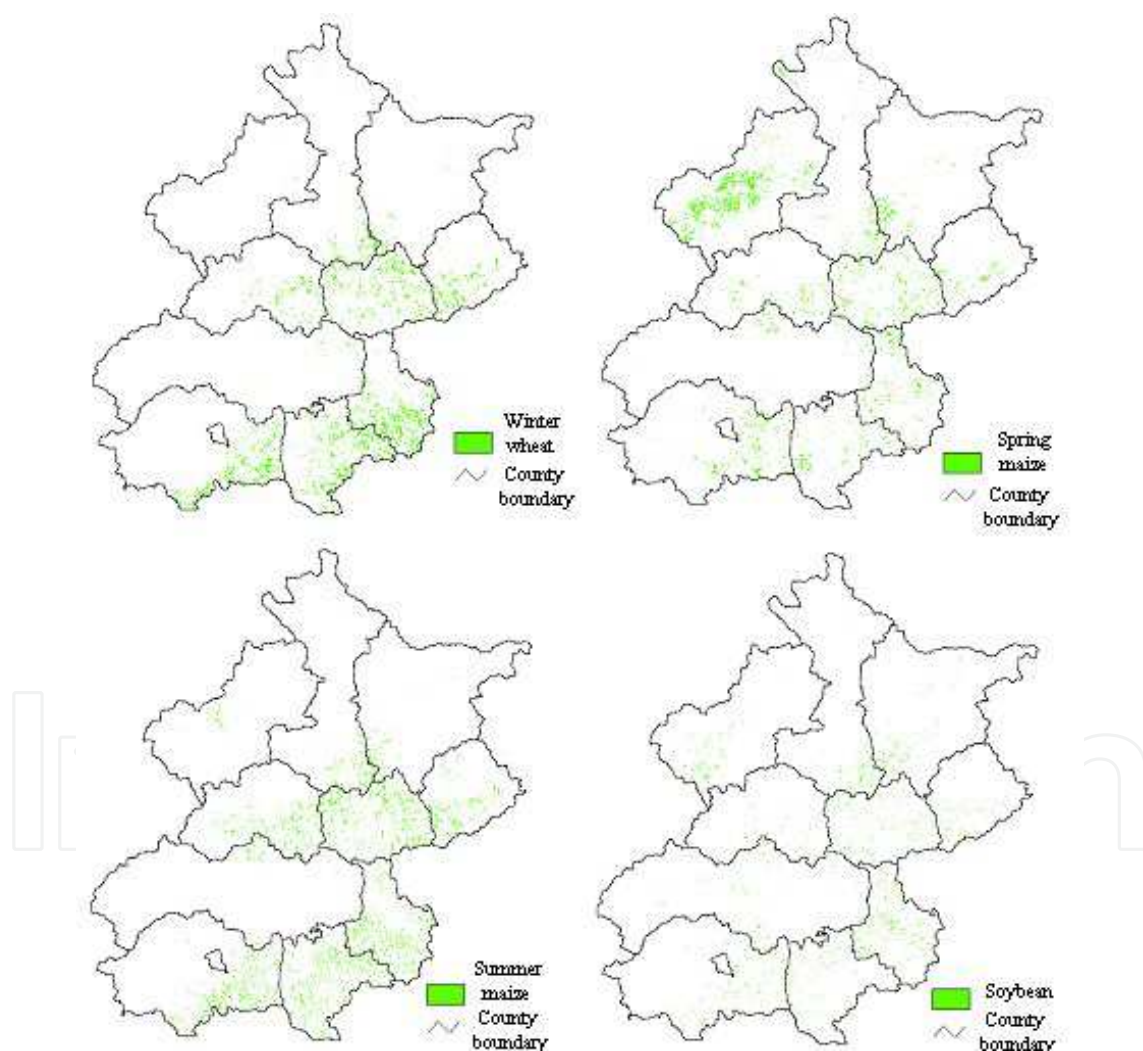


Fig. 8. Spatial distribution of main crops of Beijing in 2002

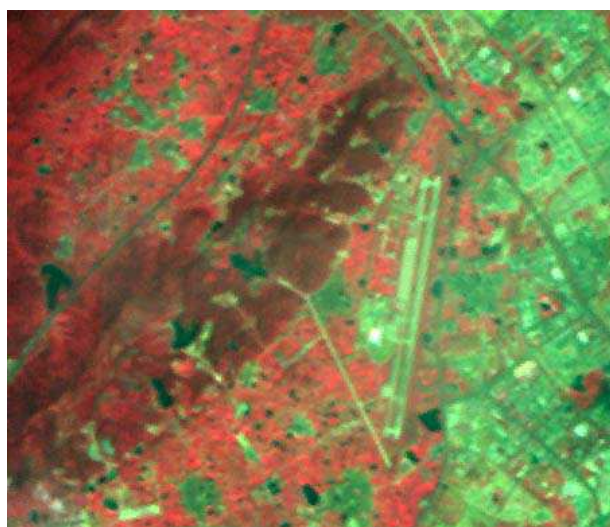
### 3.2 Classification

Classification is one of the key tasks of remote sensing applications. The classification accuracy of remote sensing images is improved when multiple source image data are introduced to the



processing [4]. Images from microwave and optical sensors offer complementary information that helps in discriminating the different classes. As discussed in the work of Wang *et al.*, a multi-sensor decision level image fusion algorithm based on fuzzy theory are used for classification of each sensor image, and the classification results are fused by the fusion rule. Interesting result was achieved mainly for the high speed classification and efficient fusion of complementary information [45]. Land-use/land-cover classification had been improved using data fusion techniques such as ANN and the Dempster-Shafer theory of evidence. The experimental results show that the excellent performance of classification as compared to existing classification techniques [46, 47]. Image fusion methods will lead to strong advances in land use/land cover classifications by use of the complementary of the data presenting either high spatial resolution or high time repetitiveness.

For example, Indian P5 Panchromatic image (Figure 9 b) with spatial resolution of 2.18 m of Yiwu City, Southeast China, in 2007 was fused with multiple spectral bands of China-Brazil CBERS data (spatial resolution: 19.2m) (Figure 9 a) in 2007. Brovey transformation fusion method was used.



(a) CBERS multiple spectral image



(b) P5 PAN image



(c) Fused image

Fig. 9. Result of image fusion: CBERS MS and P5 PAN



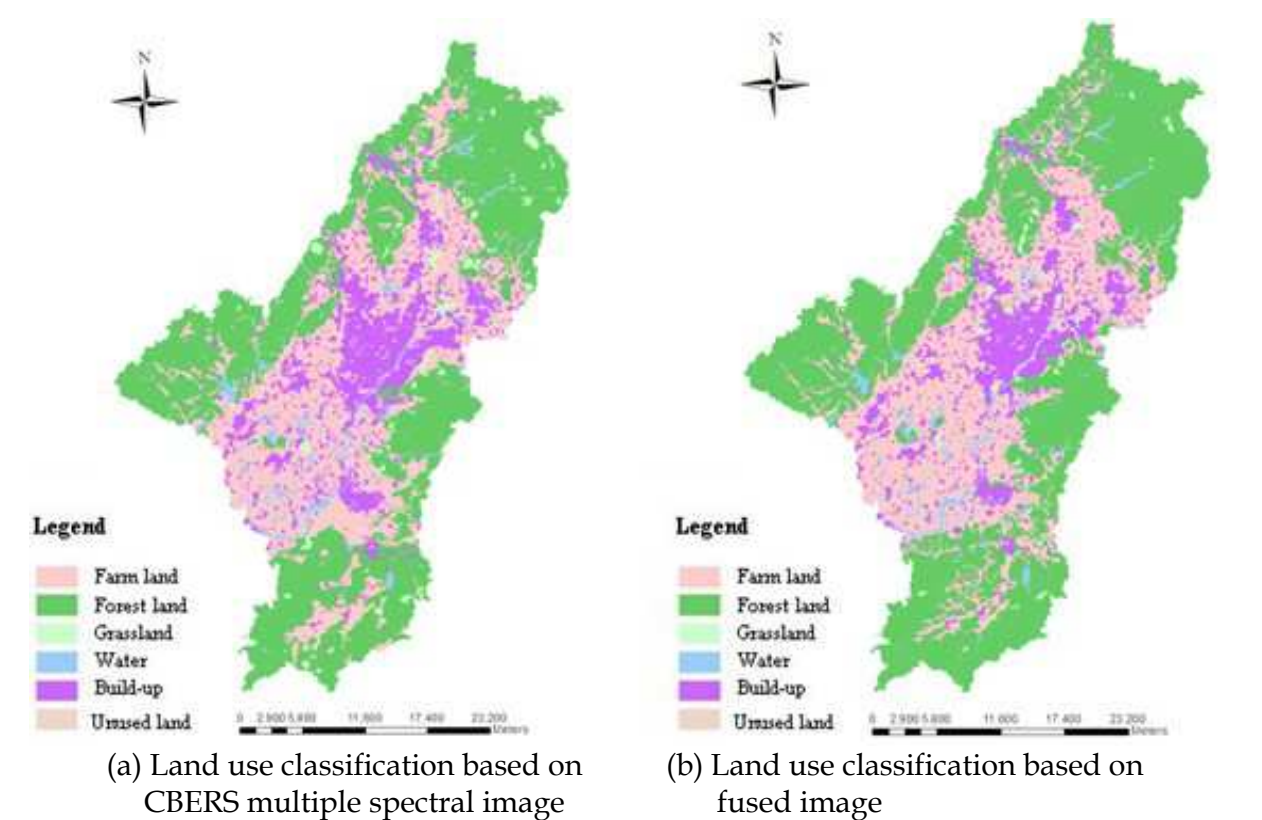


Fig. 10. Land use classification of Yiwu city,2007

Results indicated that the accuracy of residential areas of Yiwu city derived from fused image is much higher than result derived from CBERS multiple spectral image(Table 2).

Data sources	Residential and build-up areas	
	( km <sup>2</sup> )	( % )
CBERS	86	82
P5 + CBERS	67	92
Statistical data	73	-

Table 2. Comparison of land use classification results

3.3 Change detection

Change detection is the process of identifying differences in the state of an object or phenomenon by observing it at different times [48]. Change detection is an important process in monitoring and managing natural resources and urban development because it provides quantitative analysis of the spatial distribution of the population of interest [49]. Image fusion for change detection takes advantage of the different configurations of the platforms carrying the sensors. The combination of these temporal images in same place enhances information on changes that might have occurred in the area observed. Sensor image data with low temporal resolution and high spatial resolution can be fused with high temporal resolution data to enhance the changing information of certain ground objects. Madhavan *et al.* presented a decision level fusion system that automatically performs fusion of information from multi-spectral, multi-resolution, and multi-temporal high-resolution airborne data for a change-detection analysis. Changes are automatically detected in buildings, building structures, roofs,



roof color, industrial structures, smaller vehicles, and vegetation [50]. Two examples of Change detection using image fusion method are shown as follows.

1. Change detection using Landsat ETM+ and MODIS data  
Recent study indicated that urban expansion could be efficiently monitored using satellite images with multi-temporal and multi-spatial resolution. For example, Landsat ETM+ Panchromatic image(Figure 4 a) with spatial resolution of 10 m of Chongqing City, Southwest China, in 2000 was fused with daily-received multiple spectral bands of MODIS data (spatial resolution: 250m) (Figure 4 b)in 2006. Brovey transformation fusion method was used. The building areas remained unchanged from 2000 to 2006 were in grey-pink. Meanwhile, the newly established buildings were in dark red color in the composed image (Figure 5) and could be easily identified.

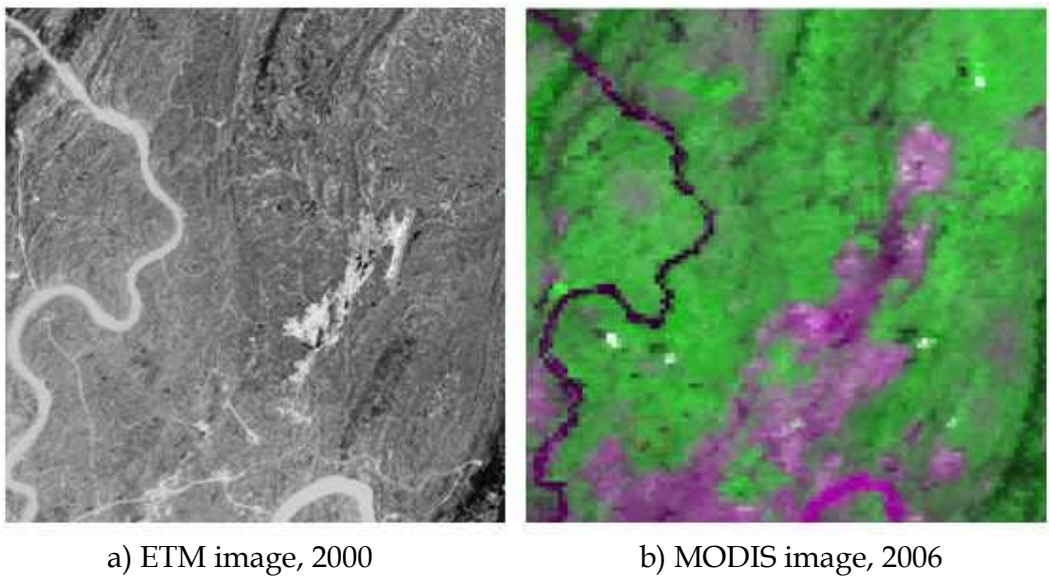


Fig. 4. Satellite images of Chongqing City

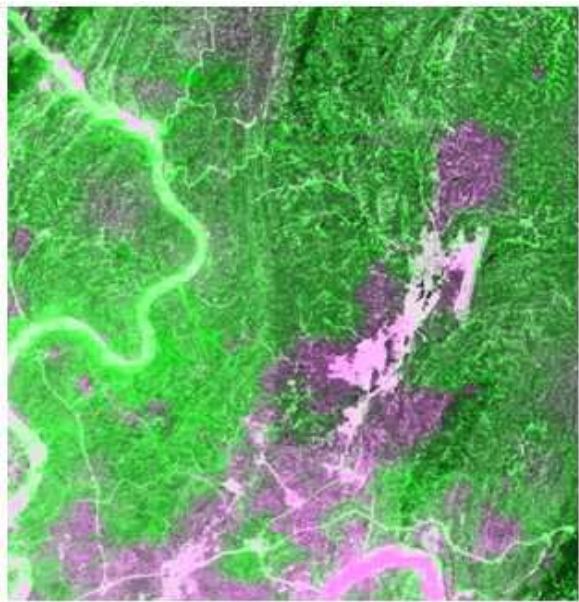


Fig. 5. Fusion result of multiple sources images of Chongqing City



2. Change detection using former land-cover map and multiple spectral images

In the study area, Qingpu district of Shanghai City,China, two kinds of data were fused for automatic urban sprawl monitoring, which include land cover map, multiple spectral image of Environment Satellites1(HJ-1). The land cover map of 2005 was used as prior knowledge for hyperspace analysis and segment. HJ-1 image of September 22, 2009 were geometric and radiometric corrected. HJ-1 images consisted of four spectral bands, which are three visible bands and a near infra-red (NIR) band.

Two data layers were overlapped and spectral DN value of the five kinds of land cover types were extracted. The results in Figure 3 show that spectral DN value of the five land cover types most clusters in relevant three-dimensional ellipsoid spaces. Outliers were considered pixels with higher probability of changed area. Based on three-dimensional feature space analysis, the map of urban expansion could be achieved.

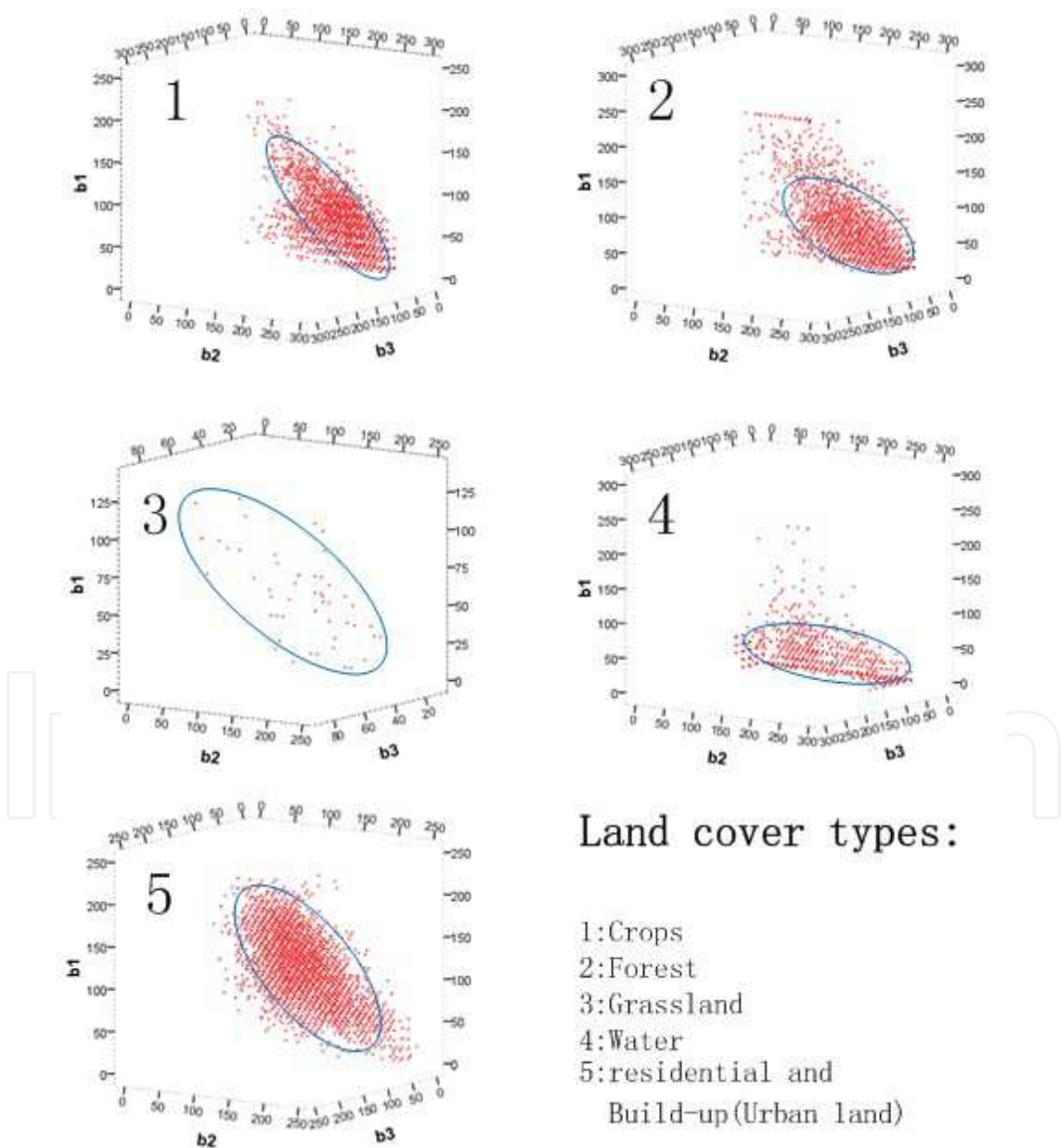


Fig. 6. Three-dimensional scatter plots and feature space of five kinds of land cover types



In recent years, object-oriented processing techniques are becoming more popular, compared to traditional pixel-based image analysis, object-oriented change information is necessary in decision support systems and uncertainty management strategies. An in-depth paper presented by Ruvimbo *et al.* introduced the concept and applications of object-oriented change detection for urban areas [49]. In general, due to the extensive statistical and derived information available with the object-oriented approach, a number of change images can be presented depending on research objectives. In land use and land cover analysis; this level of precision is valuable as analysis at the object level enables linkage with other GIS databases or derived socio-economic attributes.

### 3.4 Maneuvering target tracking

Maneuvering target tracking is a fundamental task in intelligent vehicle research. With the development of sensor techniques and signal/image processing methods, automatic maneuvering targets tracking can be conducted operationally. Meanwhile, multi-sensor fusion is found to be a powerful tool to improve tracking efficiency. The tracking of objects using distributed multiple sensors is an important field of work in the application areas of autonomous robotics, military applications, and mobile systems [51].

The numbers of the papers focused on the problem of fusion between radar and image sensors in targets tracking have appeared in recent years [52,53]. Fusion of radar data and infrared images could improve the positioning accuracy and narrow down the image working area [54]. Vahdati-khajeh addressed the multi-target tracking problem for maneuvering targets in cluttered environments. The multiple scan joint probabilistic data association (MJPDA) algorithm was used for the sake of overcoming the problem of clutter points and targets which have joint observation [55]. In order to overcome the defects of the current statistical model on non-maneuvering target tracking, Chen *et al.* presented a novel multi-sensor data fusion algorithm for tracking the large-scale maneuvering target. The fuzzy adaptive Kalman filtering algorithm with maneuvering detection was used for large-scale maneuvering target which extracts feature data from Kalman filtering processes to estimate the magnitude and time of maneuvering. The simulation results showed that the tracking system with active and passive radar has higher precision than those with a single sensor for large-scale problems [52].

## 4. Discussion and conclusions

Multi-sensor image fusion seeks to combine information from different images to obtain more inferences than can be derived from a single sensor. It is widely recognized as an efficient tool for improving overall performance in image based application. The chapter provides a state-of-art of multi-sensor image fusion in the field of remote sensing. Below are some emerging challenges and recommendations.

### 1. Improvements of fusion algorithms.

Among the hundreds of variations of image fusion techniques, methods which had be widely used including IHS, PCA, Brovey transform, wavelet transform, and Artificial Neural Network (ANN). For methods like HIS, PCA and Brovey transform, which have lower complexity and faster processing time, the most significant problem is color distortion [16]. Wavelet-based schemes perform better than those methods in terms of minimizing color distortion. The development of more sophisticated wavelet-based fusion algorithm (such as Ridgelet, Curvelet, and Contourlet transformation) could evidently improve



performance result, but they often cause greater complexity in computation and parameters setting. Another challenge on existing fusion techniques will be the ability for processing hyper-spectral satellite sensor data. Artificial neural network seem to be one possible approach to handle the high dimension nature of hyper-spectral satellite sensor data.

## 2. Establishment of an automatic quality assessment scheme.

Automatic quality assessment is highly desirable to evaluate the possible benefits of fusion, to determine an optimal setting of parameters for a certain fusion scheme, as well as to compare results obtained with different algorithms [34]. Mathematical methods were used to judge the quality of merged imagery in respect to their improvement of spatial resolution while preserving the spectral content of the data. Statistical indices, such as cross entropy, mean square error, signal-to-noise ratio, have been used for evaluation purpose. While recently a few image fusion quality measures have been proposed, analytical studies of these measures have been lacking. The work of Yin *et al.* focused on one popular mutual information-based quality measure and weighted averaging image fusion [56]. Jiying presented a new metric based on image phase congruency to assess the performance of the image fusion algorithm [57]. However, in general, no automatic solution has been achieved to consistently produce high quality fusion for different data sets [58]. It is expected that the result of fusing data from multiple independent sensors will offer the potential for better performance than can be achieved by either sensor, and will reduce vulnerability to sensor specific countermeasures and deployment factors. We expect that future research will address new performance assessment criteria and automatic quality assessment methods [59].

## 5. References

- Hall, L.; Llinas, J. (1997). An introduction to multisensor data fusion. *Proc. IEEE*. Vol.85, pp. 6-23, ISSN 0018-9219
- Genderen, J. L. van, and Pohl, C. Image fusion: Issues, techniques and applications. *Intelligent Image Fusion, Proceedings EARSel Workshop, Strasbourg, France, 11 September 1994*, edited by J. L. van Genderen and V. Cappellini (Enschede: ITC), 18- 26.
- Guest editorial. (2007). Image fusion: Advances in the state of the art. *Information Fusion*. Vol.8, pp.114-118, ISSN 1566-2535
- Pohl, C.; Van Genderen, J.L. (1998). Multisensor image fusion in remote sensing: concepts, methods and applications. *Int. J. Remote Sens*. Vol. 19, pp.823-854, ISSN 0143-1161
- Simone, G.; Farina, A.; Morabito, F.C.; Serpico, S.B.; Bruzzone, L. (2002). Image fusion techniques for remote sensing applications. *Information Fusion*. Vol.3, pp.3-15, ISSN 1566-2535
- Vijayaraj, V.; Younan, N.; O'Hara, C. (2006). Concepts of image fusion in remote sensing applications. In *Proceedings of IEEE International Conference on Geoscience and Remote Sensing Symposium, Denver, CO, USA, July 31–August 4, 2006*, pp.3798-3801,
- Dasarathy, B.V. (2007). A special issue on image fusion: advances in the state of the art. *Information Fusion*. Vol.8, pp.113, ISSN 1566-2535
- Smith, M.I.; Heather, J.P. (2005). Review of image fusion technology in 2005. In *Proceedings of Defense and Security Symposium, Orlando, FL, USA, 2005*.



- Blum, R.S.; Liu, Z. (2006). Multi-Sensor Image Fusion and Its Applications; special series on Signal Processing and Communications; CRC Press: Boca Raton, FL, USA, 2006.
- Olivier TheÂpaut, Kidiyo Kpalma, Joseph Ronsin. (2000). Automatic registration of ERS and SPOT multisensory images in a data fusion context. *Forest Ecology and Management* . Vol.123,pp.93-100, ISSN 0378-1127
- Tamar Peli, Mon Young, Robert Knox, Kenneth K. Ellis and Frederick Bennett, Feature-level sensor fusion, Proc. SPIE 3719, 1999,332, ISSN 0277-786X
- Marcia L.S. Agüena, Nelson D.A. Mascarenhas.(2006). Multispectral image data fusion using POCS and super-resolution. *Computer Vision and Image Understanding* Vol.102,pp.178-187, ISSN 1077-3142
- Ying Lei, Dong Jiang, and Xiaohuan Yang .(2007). Appllcation of image fusion in urban expanding detection. *Journal of Geomatics*,vol.32,No.3,pp.4-5,ISSN 1007-3817
- Ahmed F. Elaksher. (2008). Fusion of hyperspectral images and lidar-based dems for coastal mapping. *Optics and Lasers in Engineering* Vol.46,pp.493-498,ISSN 0143-8166
- Dai, X.; Khorram, S. (1999). Data fusion using artificial neural networks: a case study on multitemporal change analysis. *Comput. Environ. Urban Syst*.Vol.23,pp.19-31,ISSN 0198-9715
- Yun, Z. (2004). Understanding image fusion. *Photogram. Eng. Remote Sens*.Vol.6, pp.657-661,ISSN 2702-4292
- Pouran, B.(2005). Comparison between four methods for data fusion of ETM+ multispectral and pan images. *Geo-spat. Inf. Sci*.Vol.8,pp.112-122,ISSN
- Adelson, C.H.; Bergen, J.R.(1984). Pyramid methods in image processing. *RCA Eng*. Vol.29,pp.33-41,
- Miao, Q.G.; Wang, B.S. (2007). Multi-sensor image fusion based on improved laplacian pyramid transform. *Acta Opti. Sin*. Vol.27,pp.1605-1610,ISSN 1424-8220
- Xiang, J.; Su, X. (2009). A pyramid transform of image denoising algorithm based on morphology. *Acta Photon. Sin*.Vol.38,pp.89-103,ISSN 1000-7032
- Mallat, S.G. (1989). A theory for multiresolution signal decomposition: the wavelet representation. *IEEE Trans. Pattern Anal. Mach. Intell*.Vol.11,pp.674-693,ISSN 0162-8828
- Ganzalo, P.; Jesus, M.A. (2004). Wavelet-based image fusion tutorial. *Pattern Recognit*. Vol.37,pp.1855-1872, ISSN 0031-3203
- Ma, H.; Jia, C.Y.; Liu, S. (2005).Multisource image fusion based on wavelet transform. *Int. J. Inf. Technol*. Vol. 11,pp 81-91,
- Krista, A.; Yun, Z.; Peter, D. (2007).Wavelet based image fusion techniques — An introduction, review and comparison. *ISPRS J. Photogram. Remote Sens*. Vol. 62, pp.249-263.
- Candes, E.J.; Donoho, D.L.(2000). Curvelets-A Surprisingly Effective Nonadaptive Representation for Objects with Edges.Curves and Surfcaces; *Vanderbilt University Press: Nashville, TN, USA*, pp.105-120,
- Choi, M.; Kim, RY.; Nam, MR. Fusion of multi-spectral and panchromatic satellite images using the Curvelet transform. *IEEE Geosci. Remote Sens. Lett*. Vol.2,pp. 136-140,ISSN 0196-2892



- Donoho, M.N.; Vetterli, M. (2002). *Contourlets*; Academic Press: New York, NY, USA, ISSN 0890-5401
- Minh, N.; Martin, V.(2005). The contourlet transform: an efficient directional multiresolution image representation. Available online: <http://lcvwww.epfl.ch/~vetterli/IP-4-2005.pdf> (accessed June 29, 2009).
- Louis, E.K.; Yan, X.H. (1998). A neural network model for estimating sea surface chlorophyll and sediments from thematic mapper imagery. *Remote Sens. Environ.* Vol.,66, pp.153-165, ISSN 0034-4257
- Dong. J.; Yang, X.; Clinton, N.; Wang, N. (2004). An artificial neural network model for estimating crop yields using remotely sensed information. *Int. J. Remote Sens.* Vol. 25, pp. 1723-1732, ISSN 0143-1161
- Shutao, L.; Kwok, J.T.; Yaonan W.(2002). Multifocus image fusion using artificial neural networks. *Pattern Recognit. Lett.* Vol. 23, pp. 985-997, ISSN 0167-8655
- Thomas, F.; Grzegorz, G. (1995). Optimal fusion of TV and infrared images using artificial neural networks. In *Proceedings of Applications and Science of Artificial Neural Networks, Orlando, FL, USA, April 21, 1995*; Vol. 2492, pp.919-925,
- Huang, W.; Jing, Z.(2007). Multi-focus image fusion using pulse coupled neural network. *Pattern Recognit. Lett.* Vol. 28, pp.1123-1132, ISSN 0167-8655
- Wu, Y.; Yang, W. (2003). Image fusion based on wavelet decomposition and evolutionary strategy. *Acta Opt. Sin.* Vol. 23, pp. 671-676, ISSN 0253-2239
- Sun, Z.Z.; Fu, K.; Wu, Y.R. (2003). The high-resolution SAR image terrain classification algorithm based on mixed double hint layers RBFN model. *Acta Electron. Sin.* Vol., 31, pp. 2040-2044,
- Zhang, H.; Sun, X.N.; Zhao, L.; Liu, L. (2008). Image fusion algorithm using RBF neural networks. *Lect. Notes Comput. Sci.* Vol. 9, pp. 417-424,
- Gail, A.; Siegfried, M.; Ogas, J.(2005). Self-organizing information fusion and hierarchical knowledge discovery- a new framework using ARTMAP neural networks. *Neural Netw.* Vol. 18, pp.287-295,
- Gail, A.; Siegfried, M.; Ogas, J.(2004). Self-organizing hierarchical knowledge discovery by an ARTMAP image fusion system. In *Proceedings of the 7th International Conference on Information Fusion, Stockholm, Sweden, 2004*; pp. 235-242, ISSN 1210-0552
- Wang, R.; Bu, F.L.; Jin, H.; Li, L.H.(2007). A feature-level image fusion algorithm based on neural networks. *Bioinf. Biomed. Eng.* Vol. 7, pp. 821-824,
- Huadong Wu; Mel Siegel; Rainer Stiefelhagen; Jie Yang.(2002). Sensor Fusion Using Dempster-Shafer Theory · *IEEE Instrumentation and Measurement Technology Conference Anchorage, AK, USA, 21-23 May 2002*,
- S. Le Hégarat-Masclé, D. Richard, C. (2003). Ottlé, Multi-scale data fusion using Dempster-Shafer evidence theory, *Integrated Computer-Aided Engineering*, Vol.10, No.1, pp.9-22, ISSN : 1875-8835
- H. Borotschnig, L. Paletta, M. Prantl, and A. Pinz, Graz. (1999). A Comparison of Probabilistic, Possibilistic and Evidence Theoretic Fusion Schemes for Active Object Recognition. *Computing*. Vol.62, pp. 293-319,



- Jin, X.Y.; Davis, C.H. (2005). An integrated system for automatic road mapping from high-resolution multi-spectral satellite imagery by information fusion. *Information Fusion*. Vol. 6, pp.257-273, ISSN 1566-2535
- Garzelli, A.; Nencini, F. (2007). Panchromatic sharpening of remote sensing images using a multiscale Kalman filter. *Pattern Recognit.* Vol. 40, pp. 3568-3577, ISSN: 0167-8655
- Wu, Y.; Yang, W. (2003). Image fusion based on wavelet decomposition and evolutionary strategy. *Acta Opt. Sin.* Vol. 23, pp.671-676, ISSN 0253-2239
- Sarkar, A.; Banerjee, A.; Banerjee, N.; Brahma, S.; Kartikeyan, B.; Chakraborty, M.; Majumder, K.L. (2005). Landcover classification in MRF context using Dempster-Shafer fusion for multisensor imagery. *IEEE Trans. Image Processing*, Vol.14, pp. 634-645, ISSN : 1057-7149
- Liu, C.P.; Ma, X.H.; Cui, Z.M. (2007). Multi-source remote sensing image fusion classification based on DS evidence theory. In *Proceedings of Conference on Remote Sensing and GIS Data Processing and Applications; and Innovative Multispectral Technology and Applications, Wuhan, China, November 15-17, 2007*; Vol. 6790, part 2.
- Rottensteiner, F.; Trinder, J.; Clode, S.; Kubik, K.; Lovell, B. (2004). Building detection by Dempster-Shafer fusion of LIDAR data and multispectral aerial imagery. In *Proceedings of the 17th International Conference on Pattern Recognition, Cambridge, UK, August 23-26, 2004*; Vol. 2, pp. 339-342, ISSN: 1001-0920
- Ruvimbo, G.; Philippe, D.; Morgan, D. (2009). Object-oriented change detection for the city of Harare, Zimbabwe. *Exp. Syst. Appl.* Vol. 36, pp.571-588, ISSN 0013-8703
- Madhavan, B.B.; Sasagawa, T.; Tachibana, K.; Mishra, K. (2005). A decision level fusion of ADS-40, TABI and AISA data. *Nippon Shashin Sokuryo Gakkai Gakujutsu Koenkai Happyo Ronbunshu*, Vol.2005, 163-166,
- Duncan, S.; Sameer, S. (2006). Approaches to multisensor data fusion in target tracking: a survey. *IEEE Trans. Knowl. Data Eng.* Vol. 18, pp. 1696-1710, ISSN 1041-4347
- Chen, Y.; Han, C. (2005). Maneuvering vehicle tracking based on multi-sensor fusion. *Acta Autom. Sin.* Vol. 31, pp.625-630,
- Liu, C.; Feng, X. (2006). An algorithm of tracking a maneuvering target based on ir sensor and radar in dense environment. *J. Air Force Eng. Univ.* Vol. 7, pp. 25-28, ISSN 1009-3516
- Zheng, M.; Zhao, Y.; Tian, H. (2006). Maneuvering target tracking based on fusion of multi-sensor. *J. Detect. Control*, Vol. 28, pp. 43-45,
- Vahdati-khajeh, E. (2004). Tracking the maneuvering targets using multiple scan joint probabilistic data association algorithm. In *Proceedings of the Target Tracking 2004: Algorithms and Applications, IEE, Sussex University, Brighton, UK, January 1, 2004*. ISSN : 0537-9989
- Chen, Y.; Xue, Z.Y.; Blum, R.S. (2008). Theoretical analysis of an information-based quality measure for image fusion. *Information Fusion*, Vol. 9, pp. 161-175, ISSN 0018-9251
- Zhao, J.Y.; Laganriere, R.; Liu, Z. (2006). Image fusion algorithm assessment based on feature measurement. In *Proceedings of the 1st International Conference on Innovative Computing, Information and Control, Beijing, China, August 30 - September 1, Vol. 2*, pp. 701-704,

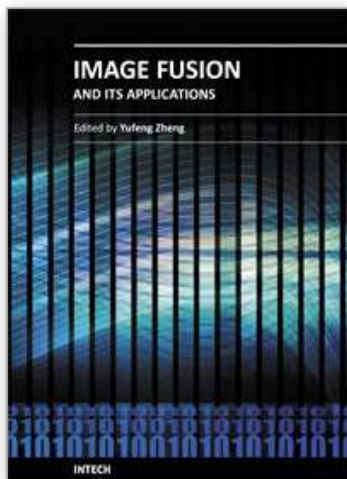


- Goshtasby, A.; Nikolov, S.(2007). Image fusion: advances in the state of the art. *Information Fusion*. Vol. 8, pp.114-118,ISSN 1566-2535
- Dong Jiang;Dafang Zhuang,; Yaohuan Huang; Jingying Fu.(2009). Advances in multi-sensor data fusion: algorithms and applications. *Sensors*, Vol.9,No.10,pp. 7771- 7784,ISSN 1424-8220

IntechOpen

IntechOpen





## **Image Fusion and Its Applications**

Edited by Dr. Yufeng Zheng

ISBN 978-953-307-182-4

Hard cover, 242 pages

**Publisher** InTech

**Published online** 24, June, 2011

**Published in print edition** June, 2011

The purpose of this book is to provide an overview of basic image fusion techniques and serve as an introduction to image fusion applications in variant fields. It is anticipated that it will be useful for research scientists to capture recent developments and to spark new ideas within the image fusion domain. With an emphasis on both the basic and advanced applications of image fusion, this 12-chapter book covers a number of unique concepts that have been graphically represented throughout to enhance readability, such as the wavelet-based image fusion introduced in chapter 2 and the 3D fusion that is proposed in Chapter 5. The remainder of the book focuses on the area application-orientated image fusions, which cover the areas of medical applications, remote sensing and GIS, material analysis, face detection, and plant water stress analysis.

### **How to reference**

In order to correctly reference this scholarly work, feel free to copy and paste the following:

Dong Jiang, Dafang Zhuang, Yaohuan Huang and Jinying Fu (2011). Survey of Multispectral Image Fusion Techniques in Remote Sensing Applications, Image Fusion and Its Applications, Dr. Yufeng Zheng (Ed.), ISBN: 978-953-307-182-4, InTech, Available from: <http://www.intechopen.com/books/image-fusion-and-its-applications/survey-of-multispectral-image-fusion-techniques-in-remote-sensing-applications>

**INTECH**  
open science | open minds

### **InTech Europe**

University Campus STeP Ri  
Slavka Krautzeka 83/A  
51000 Rijeka, Croatia  
Phone: +385 (51) 770 447  
Fax: +385 (51) 686 166  
[www.intechopen.com](http://www.intechopen.com)

### **InTech China**

Unit 405, Office Block, Hotel Equatorial Shanghai  
No.65, Yan An Road (West), Shanghai, 200040, China  
中国上海市延安西路65号上海国际贵都大饭店办公楼405单元  
Phone: +86-21-62489820  
Fax: +86-21-62489821



© 2011 The Author(s). Licensee IntechOpen. This chapter is distributed under the terms of the [Creative Commons Attribution-NonCommercial-ShareAlike-3.0 License](https://creativecommons.org/licenses/by-nc-sa/3.0/), which permits use, distribution and reproduction for non-commercial purposes, provided the original is properly cited and derivative works building on this content are distributed under the same license.

IntechOpen

IntechOpen