

We are IntechOpen, the world's leading publisher of Open Access books Built by scientists, for scientists

6,900

Open access books available

186,000

International authors and editors

200M

Downloads

Our authors are among the

154

Countries delivered to

TOP 1%

most cited scientists

12.2%

Contributors from top 500 universities



WEB OF SCIENCE™

Selection of our books indexed in the Book Citation Index
in Web of Science™ Core Collection (BKCI)

Interested in publishing with us?
Contact book.department@intechopen.com

Numbers displayed above are based on latest data collected.
For more information visit www.intechopen.com



New Approach to a Tourist Navigation System that Promotes Interaction with Environment

Yoshio Nakatani¹, Ken Tanaka² and Kanako Ichikawa³

¹College of Information Science and Engineering, Ritsumeikan University,
1-1-1, Noji-Higashi, Kusatsu, Shiga 525-8577. e-mail: nakatani@is.ritsumei.ac.jp

²Graduate School of Science and Engineering, Ritsumeikan University,
1-1-1, Noji-Higashi, Kusatsu, Shiga 525-8577. e-mail: cc007056@ed.ritsumei.ac.jp

³Quality Innovation Center, Honda Motor Co.,Ltd., Hagadai, Haga-Machi, Haga-gun,
Tochigi, 321-3325. e-mail: kanako_ichikawa@hm.honda.co.jp
Japan

1. Introduction

As an ITS (Intelligent Transport Systems) field, a tourist navigation system (TNS) is being developed to support transportation in sightseeing areas. Most tourist navigation systems fundamentally adhere to the concept of a car navigation system. They clearly calculate and propose the optimal route in terms of time and distance from the current location to the destination. This type of system is very convenient for tourists who do not have much time for a sightseeing stroll. However, some tourists enjoy the process to the destination by straying from the direct route. From our experience, in the case of a TNS which clearly shows the shortest optimal route, this often changes a sightseeing stroll into an act of tracing the recommended route. To enjoy strolling and the landscape, it is important to enjoy casual walking and not be tied down by a predetermined route unless we lose the relationship between the destination and the current position.

This study proposes a tourist navigation system that haphazardly encourages tourists in finding routes and sightseeing spots without providing detailed route information [1]. We discuss the concept of sightseeing, which is the background of design and construction of the system. In planning sightseeing, users of the system use the icons to specify the spots, and draw routes freehand on the digital map system. When they start sightseeing, the digital map is not displayed on the mobile computer, and they can only refer to spot icons, freehand routes and the real-time location data from the GPS system. Not providing the detailed route is expected to create accidental encounters. We report experiment results using the system in Nara city, a traditional sightseeing city in Japan, and introduce the new approach that we are trying.

2. Sightseeing and tourist navigation system

2.1 Current status of tourist navigation systems

Existing TNSs and services include the personal navigation system P-Tour [2] and the Raku-Raku scheduler provided by NAVIT [3]. Tourists can visit multiple sightseeing spots they

want to see in the order of their choice under a time constraint (schedule function) and obtain an optimum route in accordance with their schedule. These systems accurately adhere to a concept of car navigation systems. That is, these systems are designed to lead people to the destination with the minimum lost.

Tarumi et al. [4] performed an open experiment where they overlapped virtual space on the map displayed on mobile phones to guide tourists in sightseeing areas. They reported that the system was evaluated differently by age and gender. Twenties or younger were highly evaluated the informative screen design and women preferred photos. The most important finding in this experiment was that some subjects did not appreciate the system because it provided the same information as the travel brochures and advertising signs. This means the system should provide new information or opportunities to meet new things.

2.2 Experience with tourist navigation systems

We participated in an open experiment of a TNS to understand the current status for tourist support, and we investigated the current status of guideboards for tourists.

2.2.1 Nara prefecture tourist navigation experiment

We participated in Nara's autonomous mobile support project performed by the Ministry of Land, Infrastructure, Transport and Tourism and Nara prefecture in autumn 2006 [5]. Nara city is the ancient capital in the 8th century. More than 35 millions of tourists visit to this traditional city. This experiment provided information service using ubiquitous technology for smooth transport and enhancing the appeal of sightseeing areas aiming at the 1,300th anniversary (2010) of the change of the national capital to Nara.

The experiment provided a route from the Kintetsu Nara railway station to the Todai-ji temple, the biggest wooden building in the world, and information about sightseeing areas, shops, public restrooms, and resting-places from a PDA (Personal Digital Assistant). We could move about with the PDA, obtaining information from IC tags on guideboards and area information for current positions through the wireless (Bluetooth) communication system (Figure 1). For route guidance, spoken commands and instructions on a terminal screen were provided at turning points. Usage of the PDA, and experiment area maps were printed on an A4 paper.



Fig. 1. System usage to download the sightseeing information.

Eight students participated in the experiment. Opinions after the experiment are shown below. Some students admired the PDA:

1. We could walk listening to voice navigation without watching the screen.
2. One group enjoyed the PDA display.

Others were critical of the PDA:

3. We could obtain detailed route information from the PDA. However, it is difficult to walk while watching the screen.
4. We tended to aim at the next radio spot (Figure 1). We could not enjoy how the street looked as we walked.
5. For audio assist, we had to listen to unnecessary information before necessary information.
6. If a person is familiar with the area, it is enough to listen to the person's explanation (The PDA did not provide additional information.).
7. We could not obtain information that was not part of the specified route.

2.2.2 Current status of tourist navigation system

The TNS that we investigated provided the shortest route to the destination. Of course, TNSs are designed to provide detailed information about both sightseeing spots and purpose determined spots (i.e., restaurants, facilities) along the route. However, the information imposes preconditions for tracing the route proposed by the system. The TNS has the same concept as car navigation in terms of a system-driven tourist guide.

Social psychology proposes two travel patterns: "place-name driven" sightseeing and "purpose-driven" sightseeing [6]. Existing goal-oriented navigation is useful for place-name driven sightseeing (i.e., place-name oriented sightseeing). However, for people who enjoy strolling, this kind of system does not lead to smart shops not in guidebooks. It does not provide opportunities for walking into labyrinthian alleys through a trial-and-error process and feeling excitement in their doing so. When using the PDA, they cannot find something new or feel the atmosphere of an area. We realized that enjoying assimilation into an area was required to enjoy strolling.

2.3 Field investigation

2.3.1 Investigation of guideboards

In order to enjoy strolling, equipment and social devices are required to support strolling at a site. We investigated the distribution of sightseeing guideboards in a sightseeing area. We investigated around Yasaka shrine in Kyoto. This area is one of the most popular sightseeing spots in Kyoto and many tourists sightsee there on foot. There are many narrow streets and tourists easily get lost.

We found 56 guideboards. Of these guideboards, 29 were sketched maps, 17 were simple directional signs and 10 were standard maps. We observed many tourists who pointed out the destination on a guideboard, asked a route to a volunteer guide, and are strolling with paper maps (Figure 2).

To classify the purposes of using guideboards, analysis was carried out on a conversation within a tourist group and their behavior, such as pointing fingers and looking around. We analyzed 15 groups.

Tourists used guideboards as follows:

1. Checking current position.

2. Considering a subsequent route after that (planning)
3. Checking the direction of the destination



Fig. 2. Example of using a guideboard.

These maps had various scale sizes and different illustrations. Installers included the city, local towns, individuals and stores. The maps showed travel direction, north direction or destination, and they were inconsistent. Tourists reflected on a route by comparing maps. However because some maps were blocked by bicycles parked in front of them, we could not approach some of the maps. Some maps could not be read because the characters on the wooden board had been drawn using felt pens and the texts had faded so they were illegible. On the surface, we assumed that these complications would bother the sightseeing. However, we discovered that our initial assumption was not entirely true. When several individuals were strolling, they discussed how to interpret maps and check their location. Their behaviors were unexpectedly impressive, and we confirmed those behaviors could increase the excitement of sightseeing.

2.3.2 Confirmatory experiment for sightseeing behavior

We investigated enjoyment in sightseeing behavior and determining destination in Nara. The subjects were eight individuals including university students with a GPS. We asked four pairs to sightsee starting from JR Nara station and complete their sightseeing within two hours. After completion, we checked their routes using GPS data. Additionally, we asked the subjects to illustrate their routes. We questioned why they stayed at some places for a certain period of time and what the most impressive sites were.

The subjects found routes by searching the surroundings for landmarks, such as many trees, a pagoda, and a residential area, for their destination. They reported “The main street has to be bustling, so we walked to the direction people and shops are increasing in number” and “The five-storied pagoda is located on a hill, so we tried to find tall trees between trees.”

They also reported “We found an interesting spot in the approaching route and we did not much time, so we stopped when we returned” and “We made haste in the approaching route and played with deer when we backed.” Thus, in approaching a route, they behaved in a destination-oriented manner due to time constraints. In the return route, they flexibly stopped at a spot they noticed during their approach route when they were under time pressure. In listening to the subjects after their sightseeing, the places they stopped and the

objects and spots they saw by chance came up in conversation. Judging from route selections and the recollections of the subjects, they seemed to be interested in chance factors. The subjects were asked to draw route maps. Most subjects emphasized the spots that impressed them in the route maps. Sightseeing spots were emphasized by adding place names and illustrations. Figure 3 shows a map drawn by a subject. Interesting spots on the route had impressed the subjects. They did not understand other spots in as detailed and accurate a manner.

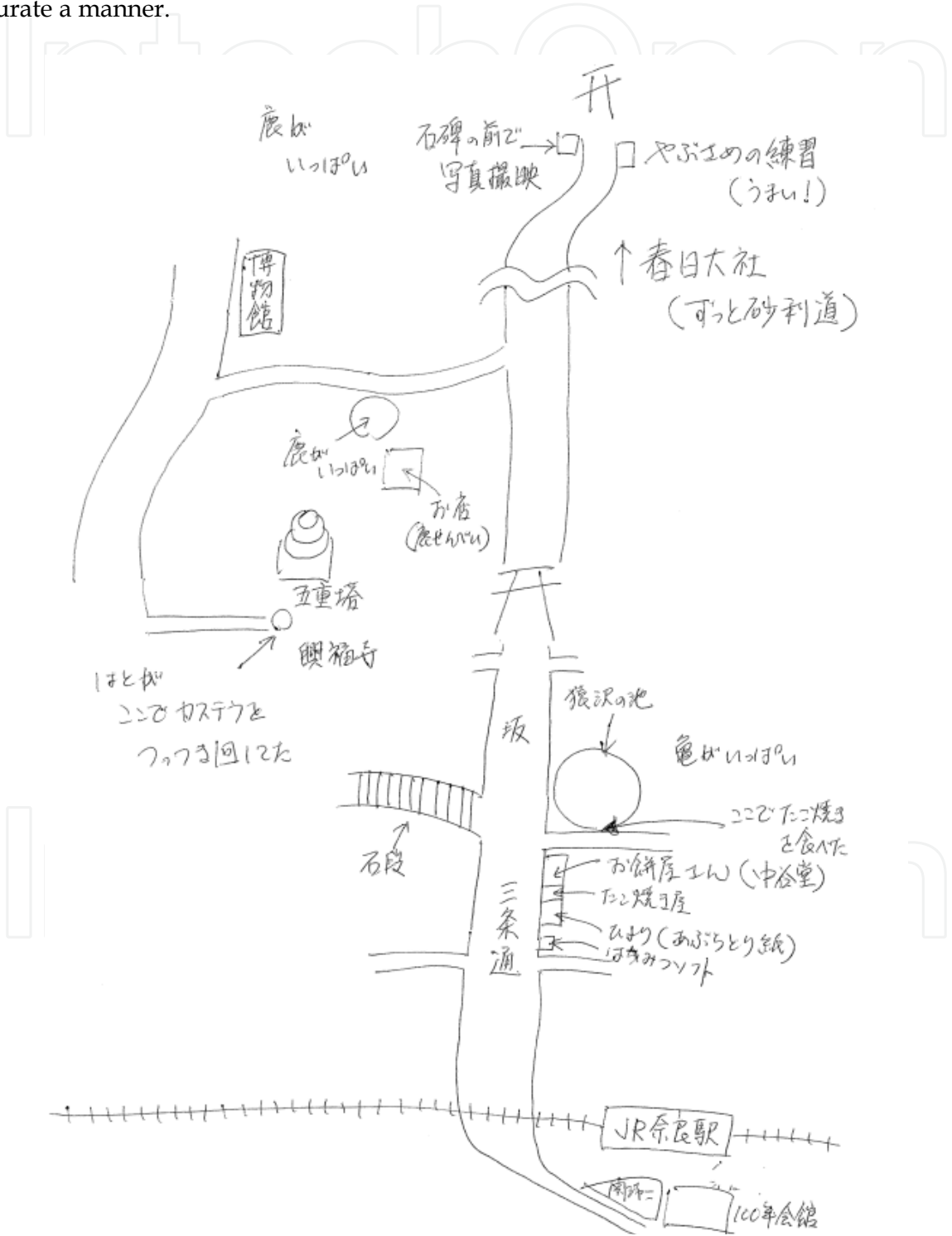


Fig. 3. Example of a constructed route map.

3. Support of sightseeing area image construction

3.1 Approach of this study

Based on our analysis shown above, we tried in this study to provide chance factors for strolling by utilizing an image of the sightseeing area. Accidental events are an important factor for play, which corresponds to “casualness” proposed by R. Caillois, a famous researcher of play [7]. Conditions in which users can play are developed by the system creating a situation that is likely to generate casualness. At this moment, users do not “play with the system.” The system generates a situation in which users “play with the environment.” Nishimura described “Space owned by the situation that surrounds me” in “Phenomenology of play” [8]. Playing with the environment generates a state for “playing with the situation.” Further, it generates casualness.

3.2 System configuration

Figure 4 shows the configuration of the prototype system. The system is roughly divided into a sightseeing area image forming system before the actual sightseeing and a transportation support system on the day of sightseeing.

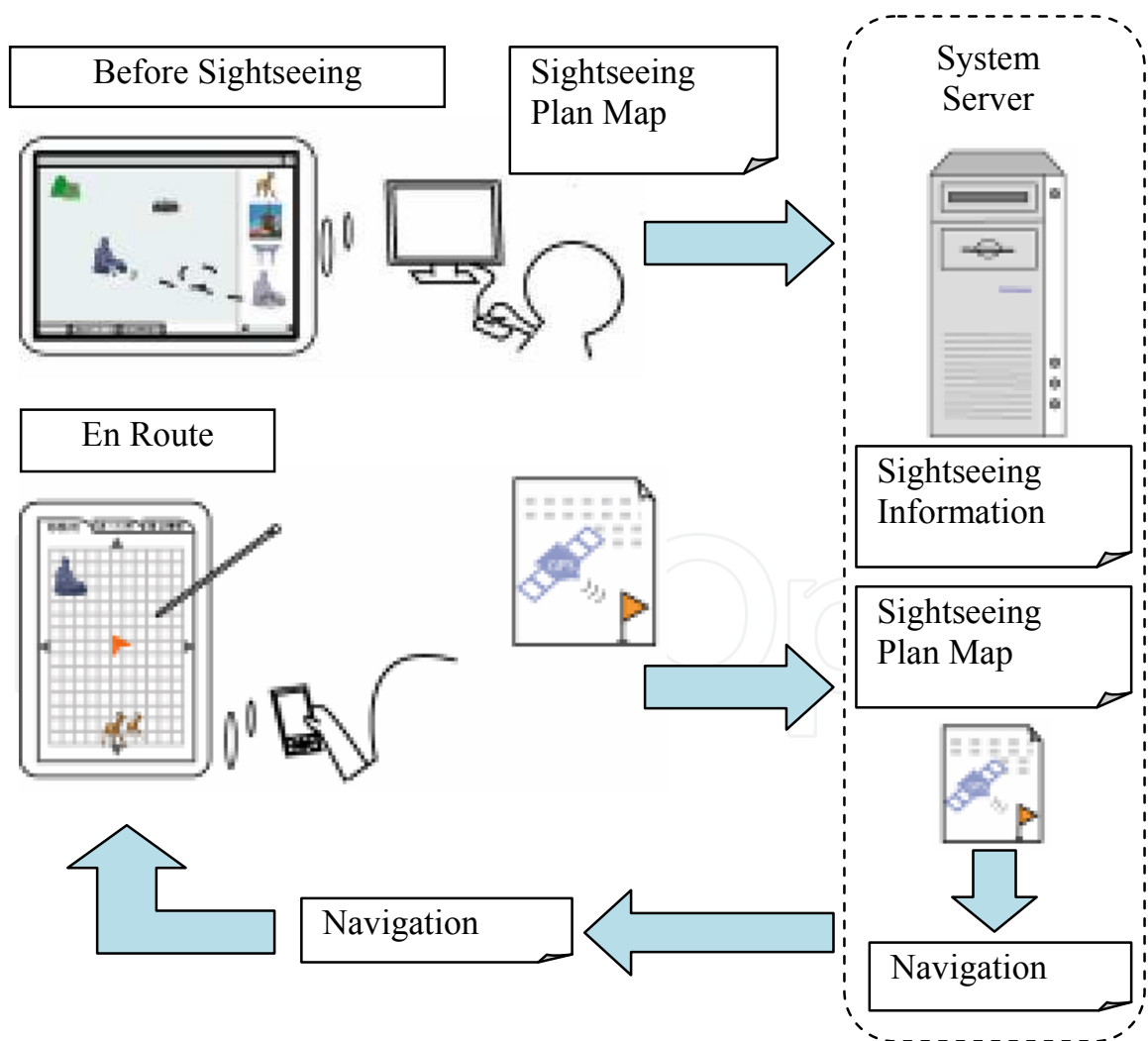


Fig. 4. System architecture

At first, the system prepares sightseeing information for the area to be visited on the system server in XML format. In the figure, the file is named the “sightseeing information” file. Then, users describe the sightseeing plan (spots to be visited and route) on the electronic map with the destination icon (and explanation) and a freehand route line based on sightseeing information file, guidebooks, magazines and information on the Web to save as the “sightseeing plan map.”

On the sightseeing day, users move about with a GPS. At this moment, no map is displayed. Sightseers are provided with the position data file obtained from the GPS on the sightseeing map file. Only the icons to be visited, the freehand route and current position information obtained from GPS are provided.

3.3 Sightseeing area image forming system

In this study, users themselves prepared a sightseeing plan map before sightseeing to create an image of the sightseeing plan. Tourists have images of sightseeing areas as a mental map. Therefore, even if they see an ambiguous map on the day of sightseeing, they have sense of direction and can guess about facilities at the spot. They can avoid a situation where they become completely disoriented and cannot at all enjoy sightseeing. Additionally, images of appropriate levels of detail will make tourists lose touch with the realities in the sightseeing areas to promote play in the situation.

For the expression method, sightseeing image icons were prepared. Tourists were asked to put images of the sightseeing spots to be visited on the electronic map (Figure 5). The result is stored in the “sightseeing plan map” file on the server.

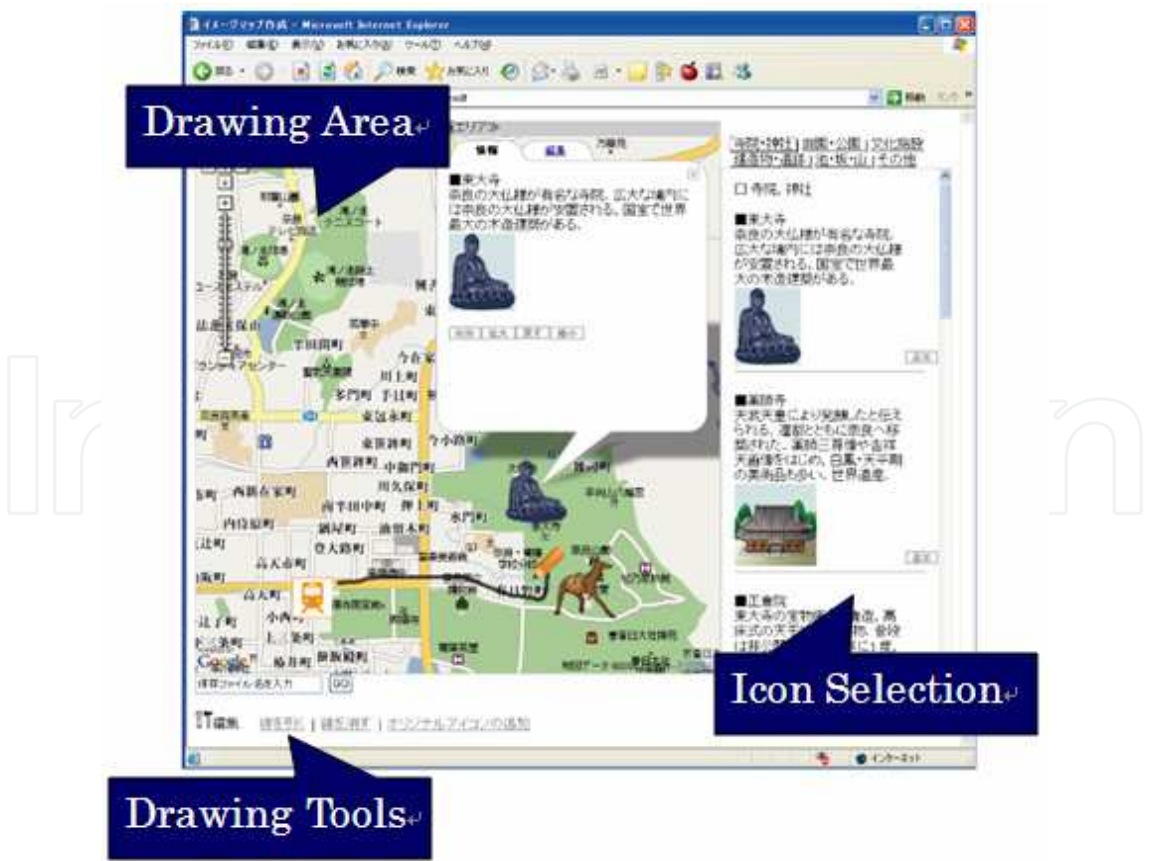


Fig. 5. A screen image of the image building system.

We prepared specific icons for major sightseeing spots. However, common icons, such as parks, temples, and shrines, were used for other spots. Users set their degree of interest and length of stay for each sightseeing spot as a guideline of interest information and action plan. The size of icons was determined depending on the degree of interest of users. Users could input text about the contents in which they were interested at each sightseeing spot. This text may express expectations that users had before sightseeing.

After inputting sightseeing spots, users drew a freehand route by including the order and route with a mouse on the map. Before drawing, users were explained that the route was changeable and could deviate in some degree from the roads.

Types and positions of icons, descriptive text and freehand route plan of sightseeing spots were recorded in an XML file as a sightseeing plan map.

3.4 Transport support system

During the actual sightseeing, users moved while referring to the sightseeing plan they had prepared in advance using the PDA.

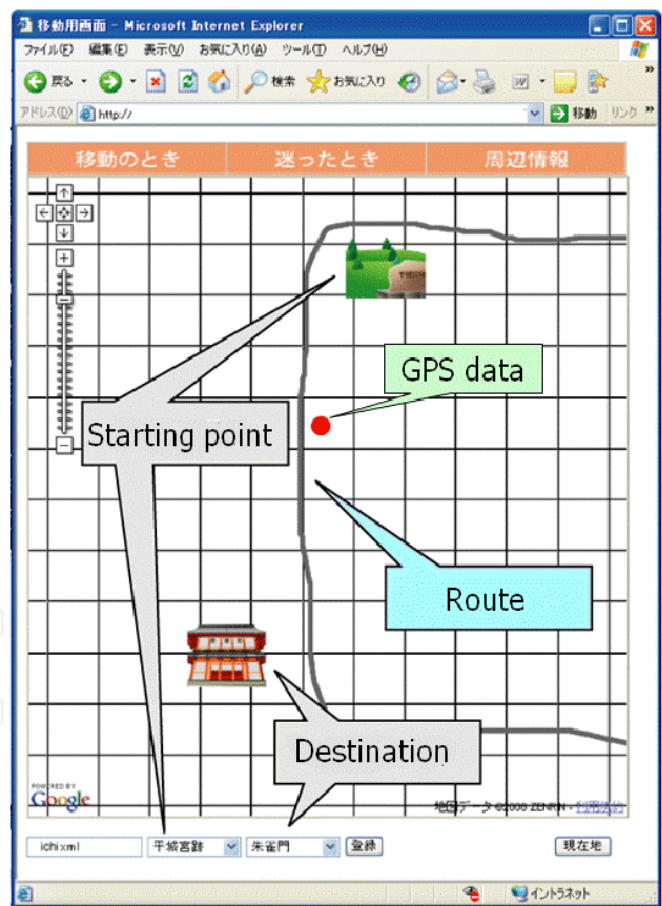


Fig. 6. A screen image of an on-site navigation.

At first, users specified the starting point and destination. By doing so, the scale was automatically changed so that two icons were displayed at a time on the screen. It is supposed that scale changes the difficulty in tracing the route, which contributes to creation of random chance. Scale size could be changed during sightseeing.

On the mobile screen, the map displayed during planning was not displayed to effectively utilize ambiguity of the image. Only the sightseeing plan prepared by users was displayed (Figure 6). Additionally, users could use information about the current position obtained by GPS data and a straight line connecting the starting point to the current position as direction information. That is, during sightseeing, users could refer to only the relative positional relationship for the sightseeing spot to be visited, the freehand route plan and the current position indicating the deviation from route plan. However, a map was displayed when users were lost.

Users could use only limited, outlined information on the PDA. Therefore, they were always conscious of the route plan and their current position. If the current position deviated from the route plan or users were ordered to turn in accordance with the route plan, they needed to stop looking at the PDA and check their surroundings to confirm their location and find the direction to take. Doing this, users selected a street they did not plan, found interesting streets and facilities, and asked people for directions. They created encounters in the sightseeing areas that could not be obtained from guidebooks. Our basic concept for tourist navigation was that too much information was not necessarily good and going as planned (expectation) was not always good. Chance encounter is important. Limiting information promotes interaction with the environment, and generates unexpected encounters with something new. Casual encounters are remembered as impressive events.

4. Evaluation of the system

We prepared a system for Nara city to verify this approach on a trial basis. We selected Nara city because it is a location for historical sightseeing with an environment suited for strolling. Sightseeing spots and historical streets are preserved in a relatively narrow space in which tourists can walk. Round trips on foot are possible. A Sony VAIO type U was used for the PDA (Figure 7).



Fig. 7. An example of system utilization.

The subjects were nine individuals (male: 7, female: 2). They were divided into three groups (five individuals, two, and two) (Table 1) and strolled.

	Group 1	Group 2	Group 3
Number of persons	5	2	2
Spots to be visited	2	3	4
Nara sightseeing experience	Insufficient	Rather insufficient	Sufficient

Table 1. Experimental subjects

We explained to the subjects to make a walking sightseeing plan of two or three hours with your friends in Nara. After this explanation, we asked them to prepare a sightseeing plan sheet, sightsee using the system and answer a questionnaire after the experiment as an assignment. The experiment was performed in January 2008.

4.1 Preparation of map

Three groups drew different types of sightseeing plan map according to their characteristics. They enjoyed drawing maps well. We confirmed from interviews that they had concrete images of sightseeing areas.

Group 1: This group knew little about the geography in Nara, and decided to visit Todai-ji temple and Sanjo street. They traced the streets to carefully prepare a route (Figure 8 (a)). They really did not want to lose their way.

Group 2: This group selected the same area as Group 2, but they did not select Todai-ji temple but selected minor three spots as Sanjo street, Nara-machi old town and Ukimi-do temple (Figure 8 (b)). This area is smaller than that of Group 1. They linked three spots with a rough route, almost ignoring streets. On the other hand, group members enjoyed putting various icons, such as the restaurant and gift shop, on a map.

Group 3: This group knew Nara well, and selected a less popular western side area of Nara station. They selected four spots (Figure 8 (c)). Among them, three spots were not prepared in the system. This shows specificity of Group 3. The line drawn traced almost all the streets. However, the line was parallel to the street in some places, showing ambiguity.

Three maps in Figure 8 have the same scale.



(a) Plan map of Group 1



(b) Plan map of Group 2



(c) Plan map of Group 3

Fig. 8. Plan maps.

4.2 Situation of movement

Groups 1 and 2 referred mainly to this system as the information source during walking. Purposes of use included confirmation of the current position and destination, and reference for registered plan information. Groups 1 and 2 used the PDA when they had discussions.

Their questionnaire after the experiment indicated the following: “We required the distance to the destination.” Group 3 rarely used the PDA because the system was frequently down and the group memorized the route when they made the map.

Group 1: Only one route was different from the plan. The group traced the route almost as planned (Figure 9 (a)). They said “The system requires shortcut display function.” They did target-oriented sightseeing.

Group 2: The group’s strategy was to walk on the main street. Group members moved roughly as planned (Figure 9 (b)). They turned back once because the street had disappeared around Ukimi-do. This is because the planned route was not accurate. They changed the order of their going to the various tourist spots on the sightseeing day and flexibly selected the routes.



(a) Transportation log of Group 1



(b) Transportation log of Group 2



(c) Transportation log of Group 3

Fig. 9. Transportation logs.

Group 3: Before reaching the first destination, group members looked at a guideboard beside the road. They were interested in an unscheduled spot and spent approximately 30 minutes at the spot (Figure 9 (c)). The distance became 500m longer than the planned distance. This group changed the route largely because they were interested in a country road. Figure 10 shows an example of system utilization.



Fig. 10. Example of system utilization.

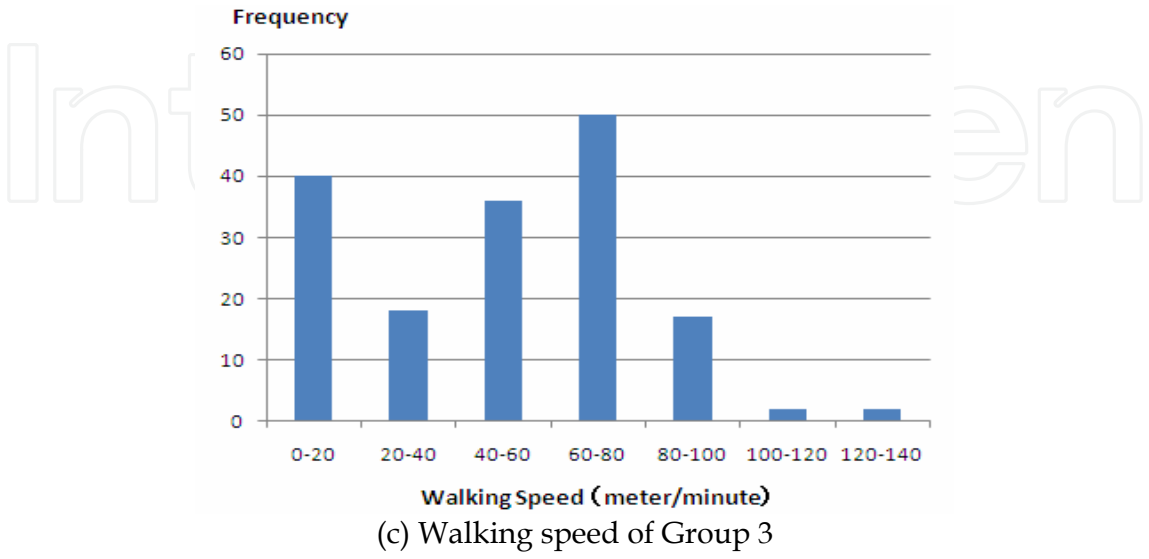
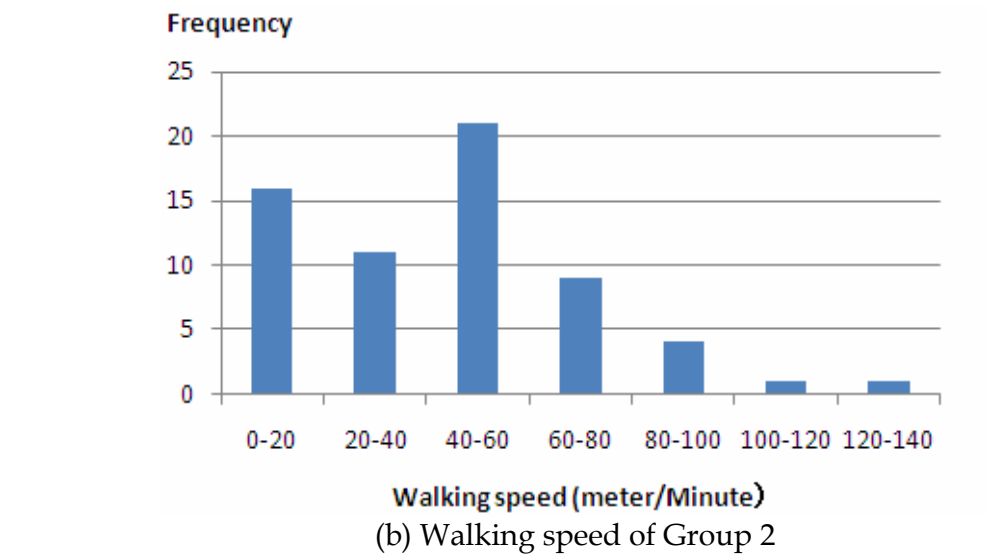
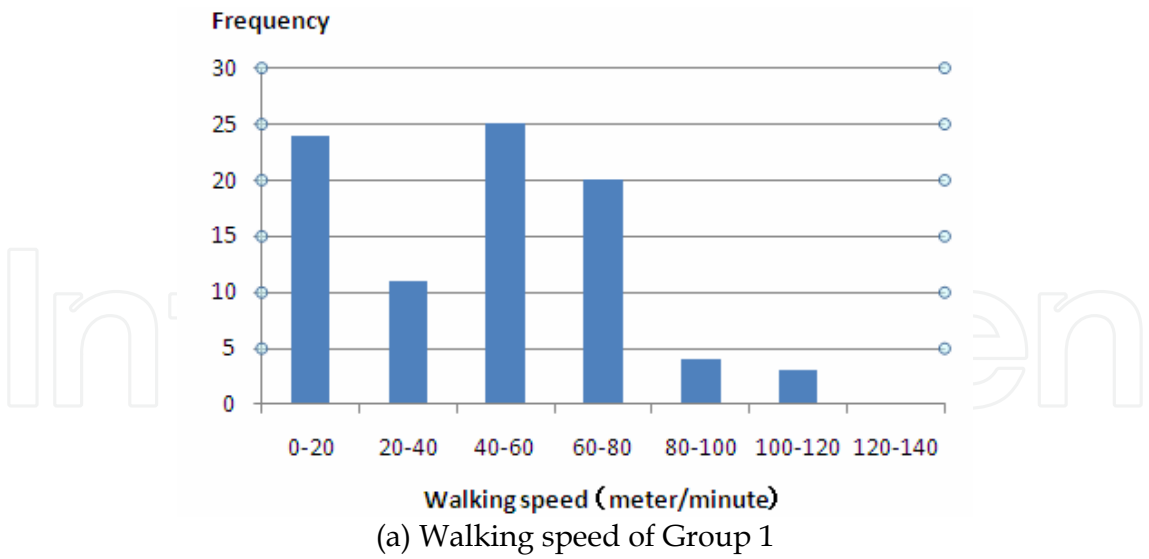


Fig. 11. Walking speed of three groups.

4.3 Ambiguity of planned route and movement

The ratio of the original route the groups actually traced was calculated as “relevance ratio” to investigate the correlation between ambiguity of the map and the route actually taken (Table 2).

	Group 1	Group 2	Group 3
Planned route length (km)	5.9	3.5	5.6
Concordant distance (km)	5.3	1.5	4.0
Relevance rate (%)	89.8	42.9	71.4

Table 2. The distance actually walked in the plan.

The relevance rate of group 1 and 3 is high. The relevance rate of group 2 was less than 50% showing significant difference from the other groups. The planned route of group 2 was rougher than the other groups. This may have facilitated their changing routes. Figure 11 shows the distribution of walking speed of each group. Walking speed per minute was calculated based on the GPS data. For walking speed (brisk walking: 80m /min as a reference), groups 1 and 2 stopped walking (0-20m/min) and walked slowly (20-60m/min) more frequently than group 3. Especially, group 2 showed this tendency. This is because planned route was ambiguous and they walked and checked their surroundings. As shown above, it was suggested that ambiguity of the planned route promoted selection of an unplanned route and reduced waking speed.

4.4 Creation of contingency

The ratio of the unplanned route to the entire movement distance was calculated as the rate of deviation (Table 3).

	Group 1	Group 2	Group 3
Total movement distance (km)	5.9	3.6	7.2
Unplanned distance (km)	0.6	2.1	3.2
Rate of deviation (%)	10.2	58.3	44.4

Table 3. Ratio of distance from the plan.

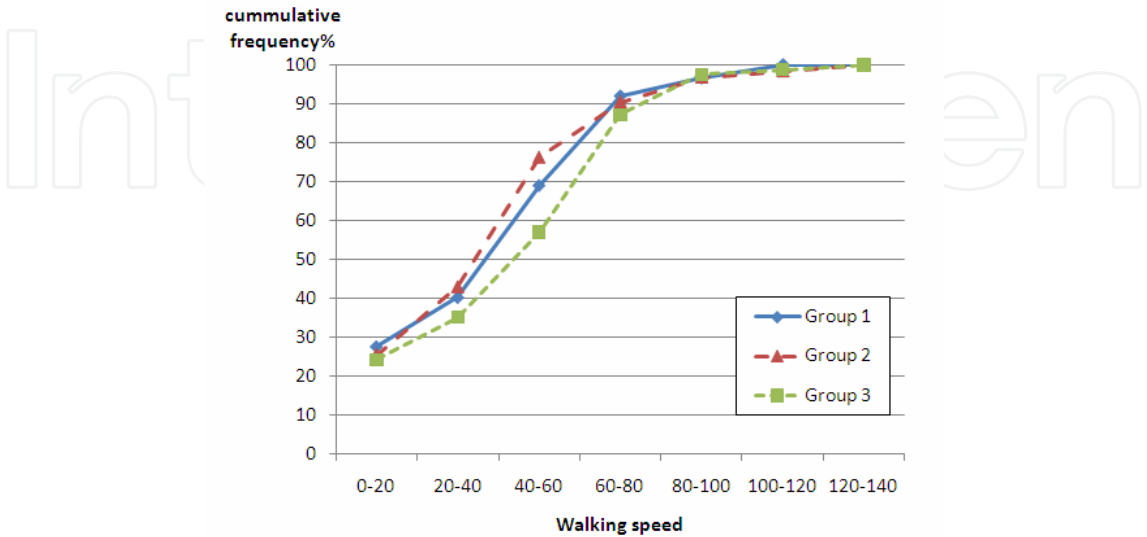


Fig. 12. Cumulative walking speed of three groups.



(a) Places where subjects stayed: Group 1



(b) Places where subjects stayed: Group 2



(c) Places where subjects stayed: Group 3

Fig. 13. Places where subjects stayed for more than 3 minutes.

Group 1 prepared a rigorously planned route that rarely showed behavior in looking for an unplanned route. The rate of deviation was lowest (approximately 10%). For group 2, the walking distance was short and the relevance rate was low. Therefore, the rate of deviation was highest (approximately 58%). The rate of deviation for group 3 was also high. The group followed the planned route. However, group members added destinations on site and passed an unplanned street at some point. Therefore, movement distance was longer than planned.

Figure 12 compares the cumulative rate of walking speed of each group. Slow movement speed spots (0-40m/min) were analyzed for each group in Figure 13.

Group 1 stopped for 10 minutes at the starting point. In these 10 minutes, group members started the system and decided their sightseeing strategy. They rarely stayed long on a spot. Group 2 stopped during the movement. Group members took pictures of the scenery and posters. They seemed to enjoy strolling as they moved.

Group 3 stopped for approximately 10 minutes when the system was down. Other than the 10-minute stop, the group did not stop. Group members did their sightseeing while they walked.

Group 2 was an only group who stayed more than 3 minutes during the movement. On these points, they enjoyed buying and eating Japanese sweets at a shop which they came across, and enjoyed being surprised to accidentally find that a temple could be seen from an unexpected point.

As shown above, the group that prepared an ambiguous map during the planning enjoyed the casualness (change of route, stopping midway on the route, etc.).

4.5 Discussions

After the experiment, all subjects were asked to answer a questionnaire which included items as follows:

1. Was route planning easy?
2. Did your sightseeing plan map match your own image?
3. How did you feel when you could not be provided detailed route information?
4. Under what situation did you use the system?
5. Did you have any strategy for movement?
6. What kind of additional functions do you want?
7. Other feedback

According to the results of the questionnaire, all groups had difficulty in making a route plan. This is because the subjects were difficult to know the actual situation of the route and to decide an appropriate route to be selected. One subject answered that altitude data were required to estimate the fatigue level and to decide how many spots to visit.

On the other hand, all group members answered that they enjoyed making a route plan and that the map was satisfactory corresponding to the interest and knowledge level of each group.

An interesting thing is that all members enjoyed having got lost. They have troubles in finding routes in daily lives. In a sense, they felt as participating in a game which was provided by the system. Of course, they reported that finding new things during lost was very fascinating and exciting. This is anticipated efficacy of this system. This is a kind of "benefit of inconvenience" which was proposed by Kawakami et al. [9].

Some members of Group 1 said, said, "We need distance information to the destination" and "We require information about shortcuts." These requests went against the concept of this

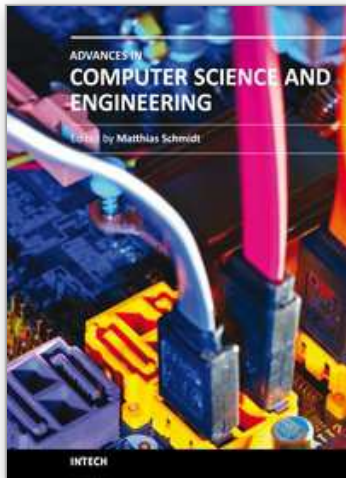
system. Group 1 did not know the detailed geographical knowledge about the area and felt anxious if they could lose their way without the detailed route information. The level of unfamiliarity to the area has to be considered when the detailed information is hidden. Some tactics or know-how of orienteering could be useful support. When Group 2 got lost around Ukimi-do, they tried to find the landscape which best matched their image of the destination. This could be a clue of supporting unfamiliar tourists.

5. Conclusion

We proposed a TNS that did not provide detailed route information. We evaluated the system in Nara city. The system was relatively highly evaluated. However, some subjects said, "We need distance information to the destination" and "We require information about shortcuts." The requests went against the concept of this system. When tourists use a TNS, they tend to depend on the system. Finding a route by itself is difficult and requires tactics or know-how of orienteering. We need to further study this issue in the next step. Now we are investigating a framework which helps tourists with only photographs of landmarks on a route and other framework which completely hides a map except the limited number of landmarks, such as post offices, schools, and drug stores. Some photographs are taken from the opposite direction of travel. Thus far, photographs are very effective to navigate people by making them look around the environment. Even familiar people to an area found new routes and shops, which made them excited.

6. References

- Yoshio Nakatani, Ken Tanaka and Kanako Ichikawa, A Tourist Navigation System That Does NOT Provide Route Maps, *Lecture Notes in Engineering and Computer Science: Proceedings of The World Congress on Engineering and Computer Science 2009*, WCECS 2009, 20-22 October, 2009, San Francisco, USA, pp.1264-1269.
- A. Maruyama, N. Shibata, Y. Murata, K. Yasumoto and M. Ito, "P-TOUR: A Personal Navigation System," *Proc. the 11th World Congress on ITS*, 2004, 18-22 October, Nagoya, Japan, pp. 18-21.
- NAVIT, Raku-Raku scheduler,
<http://www17.pos.to/~navit/hp/mannavi/scheduler01.html>. (in Japanese)
- H. Tarumi, et al., "Open experiments of mobile sightseeing support systems with shared virtual worlds," *Proc. 2006 ACM SIGCHI Intl. Conf. Advances in Computer Entertainment Technology*, 2006 (DVD).
- Ministry of Land, Infrastructure, Transport and Tourism and Nara prefecture, "Nara Prefecture Autonomous Mobile Support Experiment,"
<http://www.pref.nara.jp/doroi/jiritsu/>. (in Japanese)
- K. Oguchi, *Social Psychology of Sightseeing*, Tokyo: Kitaoji-Shobo, 2006. (in Japanese)
- R. Caillois, *Man, Play, and Games* (translated from the French by Meyer Barash), Urbana : University of Illinois Press, 2001.
- K. Nishimura, *Phenomenology of play*, Tokyo: Keiso-Shobo, 1989. (in Japanese)
- H. Kawakami, et al., "System Design Based on Benefit of Inconvenience and Emotion," *Proc. ICCAS-SICE 2009*, 18-21 August, 2009, Fukuoka, Japan, pp.1184-1188.



Advances in Computer Science and Engineering

Edited by Dr. Matthias Schmidt

ISBN 978-953-307-173-2

Hard cover, 462 pages

Publisher InTech

Published online 22, March, 2011

Published in print edition March, 2011

The book *Advances in Computer Science and Engineering* constitutes the revised selection of 23 chapters written by scientists and researchers from all over the world. The chapters cover topics in the scientific fields of Applied Computing Techniques, Innovations in Mechanical Engineering, Electrical Engineering and Applications and Advances in Applied Modeling.

How to reference

In order to correctly reference this scholarly work, feel free to copy and paste the following:

Yoshio Nakatani, Ken Tanaka and Kanako Ichikawa (2011). New Approach to a Tourist Navigation System that Promotes Interaction with Environment, *Advances in Computer Science and Engineering*, Dr. Matthias Schmidt (Ed.), ISBN: 978-953-307-173-2, InTech, Available from: <http://www.intechopen.com/books/advances-in-computer-science-and-engineering/new-approach-to-a-tourist-navigation-system-that-promotes-interaction-with-environment>

INTECH
open science | open minds

InTech Europe

University Campus STeP Ri
Slavka Krautzeka 83/A
51000 Rijeka, Croatia
Phone: +385 (51) 770 447
Fax: +385 (51) 686 166
www.intechopen.com

InTech China

Unit 405, Office Block, Hotel Equatorial Shanghai
No.65, Yan An Road (West), Shanghai, 200040, China
中国上海市延安西路65号上海国际贵都大饭店办公楼405单元
Phone: +86-21-62489820
Fax: +86-21-62489821

© 2011 The Author(s). Licensee IntechOpen. This chapter is distributed under the terms of the [Creative Commons Attribution-NonCommercial-ShareAlike-3.0 License](https://creativecommons.org/licenses/by-nc-sa/3.0/), which permits use, distribution and reproduction for non-commercial purposes, provided the original is properly cited and derivative works building on this content are distributed under the same license.

IntechOpen

IntechOpen