

AUTHOR GUIDELINES – BOOK CHAPTERS

These guidelines are intended to help you with the preparation of your manuscript. Should you have questions after studying this document, please contact your Publishing Process Manager.

- Manuscript length should be 16 to 26 pages, font 9pt, single spacing. InTech can exceptionally accept shorter or longer manuscripts, provided that the scientific content is of high value. Additional page charges may be levied if a manuscript is substantially longer than 26 pages.
- ALL submitted manuscripts **must** include the following:
 - Title
 - List of authors and their affiliations
 - Abstract
 - Keywords
 - Introduction
 - Body (problem statement, application area, research course, method used, status, results, further research)
 - Conclusion
 - Acknowledgments (where applicable)
 - References

Title - Make sure that the title is specific and concise. Titles should be presented in title case - all words except prepositions, articles, and conjunctions should be capitalized.

List of authors and affiliations - Provide the full names and affiliations of all the authors written in the English language. Affiliations should include department, university or organization, city, and country. One of the authors should be designated as the corresponding author, and their email address needs to be included.

Abstract - The abstract should briefly introduce the manuscript, not exceeding 300 words. No citations should be included in the abstract.

Introduction - The introduction section should provide a context for your manuscript. When preparing the introduction, please bear in mind that some readers will not be experts in your field of research.

Acknowledgments – You as the author are free to decide whether to include acknowledgments or not. Usually, the acknowledgments section includes the names of people who in some way contributed to the work, but do not fit the criteria to be listed as the authors. This section of your manuscript can also include information about funding sources.

References - InTech uses the numbered citation method for reference formatting, with sequential numbering in the text, and respective ordering in a list at the end of the paper (Vancouver style).

The list should contain at least five references and should be arranged in the order of citation in text, not in alphabetical order. List only one reference per reference number.

In the text, each reference number should be enclosed by square brackets. Citations of references may be given simply as “in [1] ...”, or as “in reference [1] ...”. Similarly, it is not necessary to mention the authors of a reference, unless the mention is relevant to the text. Phrases such as “For example,” should not introduce references in the list, but should instead be given in square brackets in the text, followed by the reference number, i.e., “For example, see [5].”

Multiple citations within a single set of brackets should be separated by commas. Where there are three or more sequential citations, they should be given as a range [2,7-9,13].

In order to make reading and searching simpler, references will be linked electronically to the papers they cite. Formatting the references properly is therefore crucial.

Please use the following style for the reference list:

Journal

[1] Gillespie Z, Pulido O, Vavasour E (2011) Risk Assessment Approaches for Carcinogenic Food Contaminants. *Int. food risk anal. j.* 63: 1252-1263.

Online Journal

[2] Gillespie Z, Pulido O, Vavasour E (2011) Risk Assessment Approaches for Carcinogenic Food Contaminants. *Int. food risk anal. j.* Available: <http://www.intechopen.com/articles/show/title/risk-assessment-approaches-for-carcinogenic-food-contaminants>. Accessed 2011 Nov 14.

Use of a DOI number for the full-text article is acceptable as an alternative for, or in addition to, traditional volume and page numbers.

Book

[3] Caterina AM La Porta (2011) *Skin Cancers - Risk Factors, Prevention and Therapy*. Rijeka: InTech. 272 p.

Book Chapter

[4] Gante H.F (2011) Diversification of Circum- Mediterranean Barbels. In: Grillo O, Verona G, editors. *Changing Diversity in Changing Environment*. Rijeka: InTech. pp. 11-19.

INFORMATION ABOUT TABLES/FIGURES/EQUATIONS

Figures and Figure Captions

Make sure you place figures in the manuscript in the exact position you want them to appear. If you are submitting figures as separate files, make sure you indicate the position of figures in the manuscript.

Figures must be in high resolution, which is suitable for reproduction and print. High resolution starts at 300 DPI for .JPEG and .TIFF formats. EPS formatted files are also acceptable. Color figures are welcome.

Place figures as close as possible to the first reference to them in the manuscript. When referring to a figure in the body of the text, the word "Figure" is used.

Example:

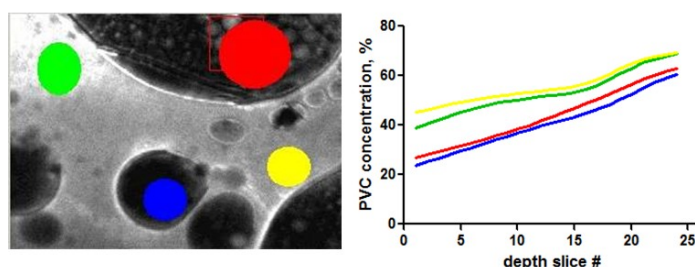


Figure 12. Concentration depth profiles of PVC% in the blend from areas selected on confocal

Tables and Table Captions

Avoid submitting tables in image formats (e.g. .jpeg, .tiff). If you are submitting tables as separate files, make sure you indicate the position of tables in the manuscript.

Place tables as close as possible to the first reference to them in the manuscript. When referring to a table in the manuscript, no abbreviation is used, e.g. "Table". Each table should be given a number in Arabic numerals. All tables must be incorporated into the text in Portrait orientation.

Example:

	Positions (mm)	Orientation angles (degs)
Waist platform	$X_W = 0$	$\Phi_W = A_\phi(v, h)\sin(\omega t + \Phi_{W,0})$
	$Y_W = 0$	$\Theta_W = A_\theta(\alpha)$
	$Z_W = 0$	$\Psi_W = A_\psi(v, l)\sin(\omega t + \Psi_{W,0})$
Thorax platform	$X_T = 0$	$\Phi_T = -A_\phi(v, h)\sin(\omega t + \Phi_{T,0})$
	$Y_T = 0$	$\Theta_T = -A_\theta(\alpha)$
	$Z_T = 0$	$\Psi_T = -A_\psi(v, l)\sin(\omega t + \Psi_{T,0})$

Table 4. Prescribed movements for the moving platforms in a walking mode

Equations

Avoid submitting equations in image formats (e.g. .jpeg, .tiff).

Equations are to be centered and numbered consecutively, with Arabic numerals, from 1 upwards. Enumeration of equations is in brackets and right-aligned. You are free to use equation-editor programs such as "MathType" and "Aurora".